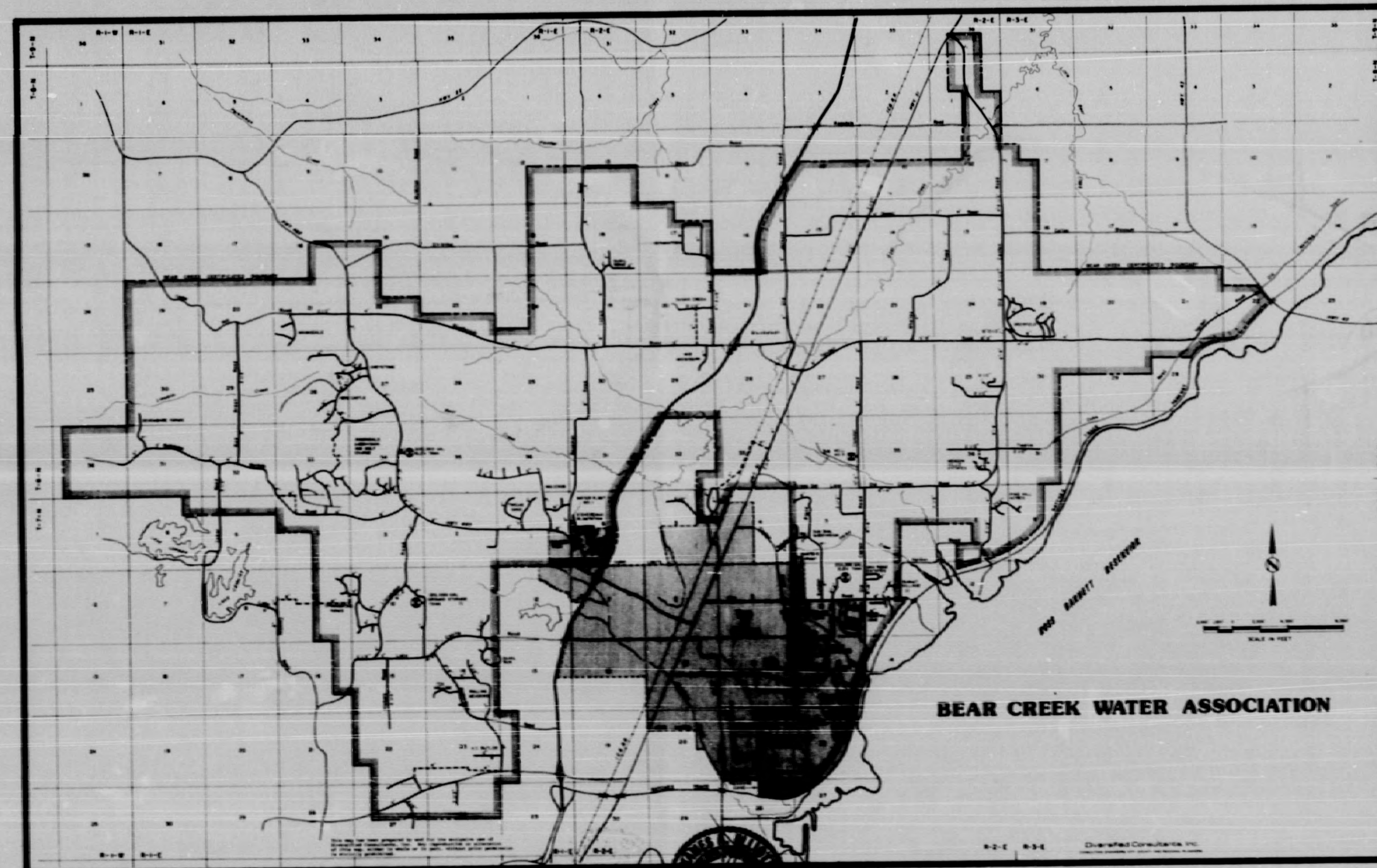


BEAR CREEK WATER ASSOC., INC.

Waterworks Improvements No. 5

ASSOCIATION OFFICIALS

Richard MacNealy _____ PRESIDENT
Earline Nations _____ VICE PRESIDENT
Anne King _____ SECRETARY TREASURER
Frank Johnson _____ BOARD MEMBER
Washington Gross _____ BOARD MEMBER
George Sisk _____ BOARD MEMBER
Jim Herring _____ ATTORNEY
James A. Elliott _____ ENGINEER



SHEET INDEX

Project Location Key Map	A
Distribution System Sheets CONTRACT I	1-6
Elevated Tank Details CONTRACT II	7
Standard Waterworks Details	8
Miscellaneous Details	9

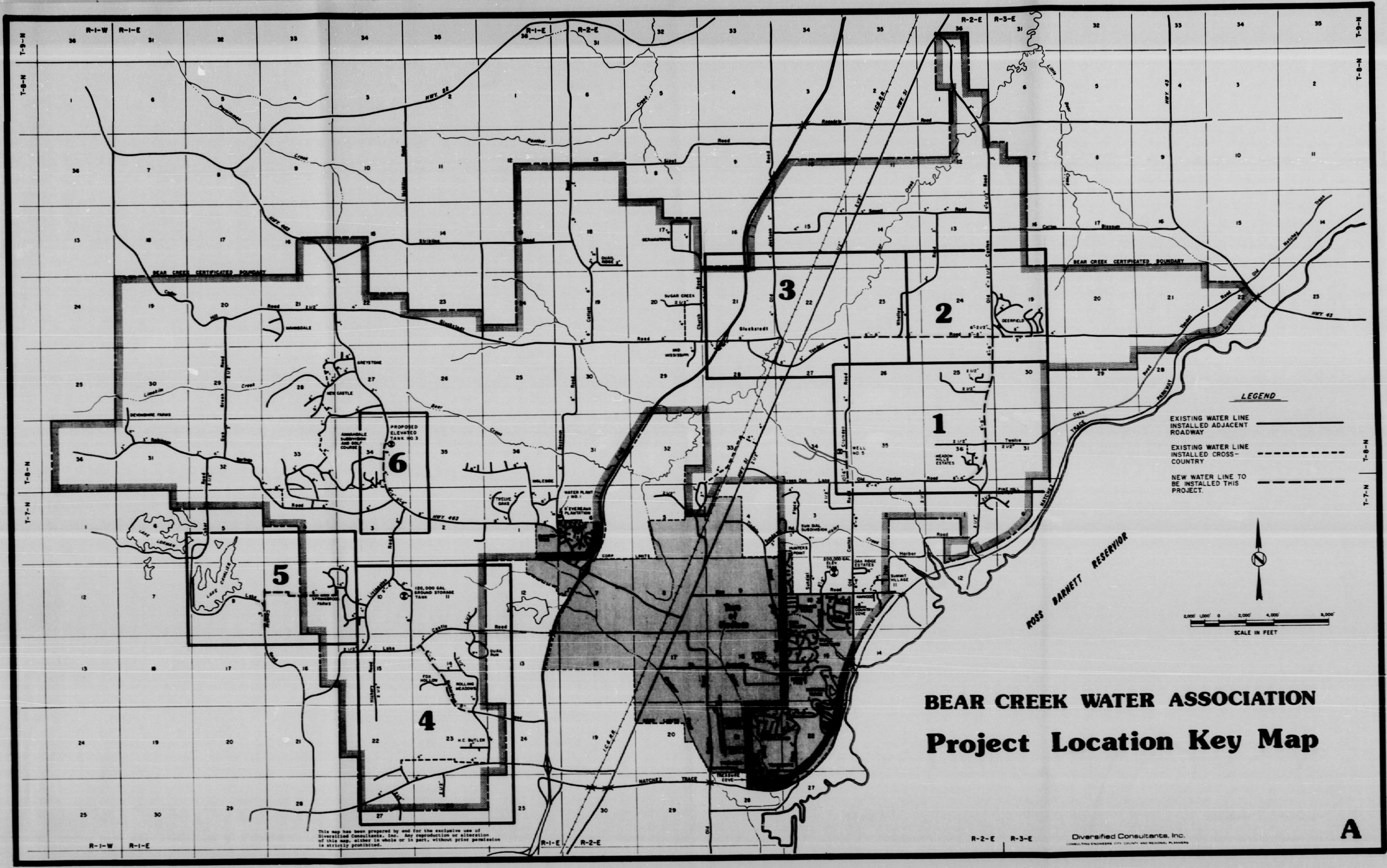
APPROVED 5-2-88
[Signature]
DIVISION OF WATER SUPPLY
BUREAU OF ENVIRONMENTAL HEALTH
MISSISSIPPI STATE DEPARTMENT OF HEALTH

March 1988

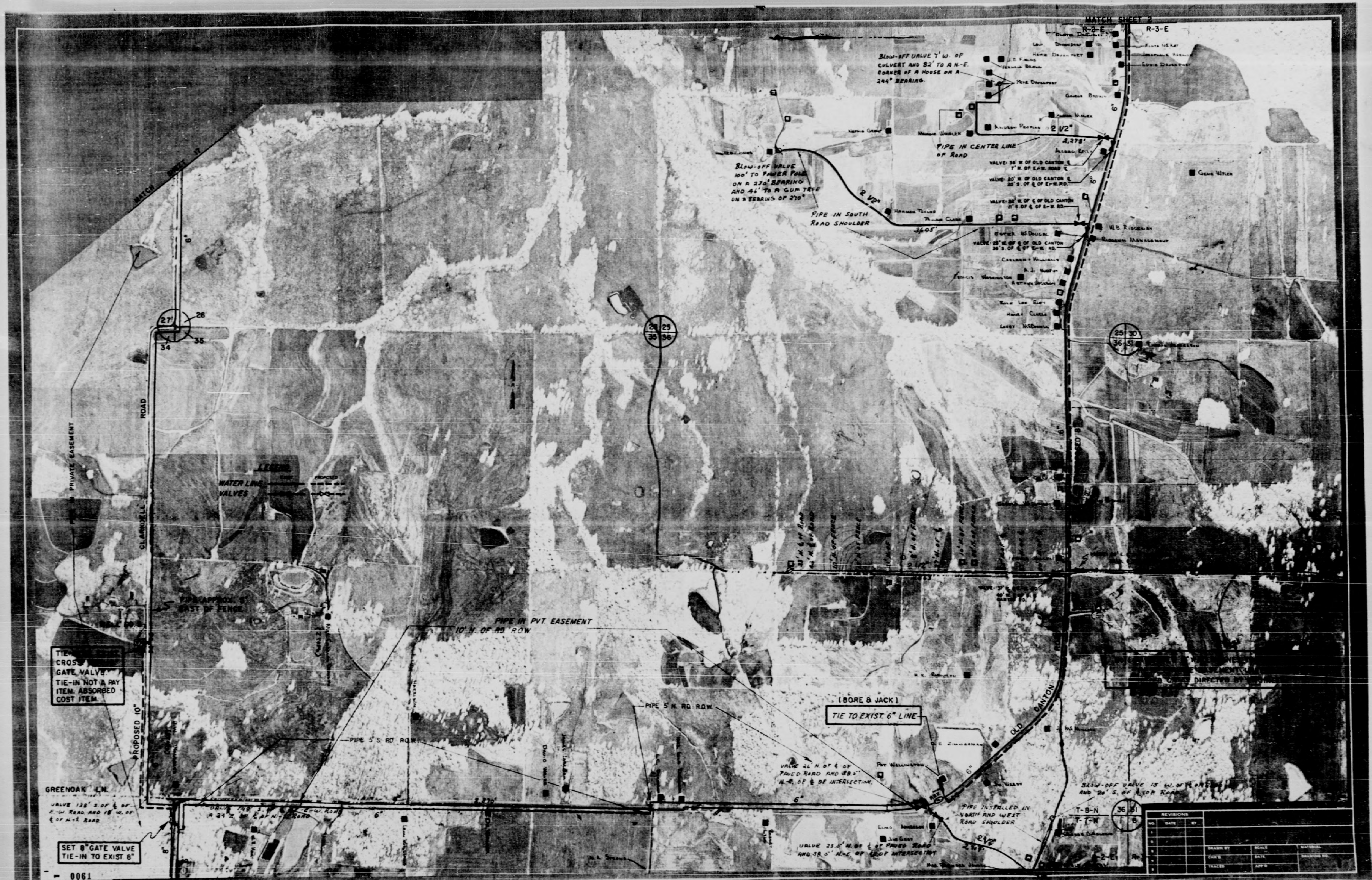
DIVERSIFIED CONSULTANTS, INC.
CONSULTING ENGINEERS.....PLANNERS
JACKSON, MISSISSIPPI

7035

NI



NI

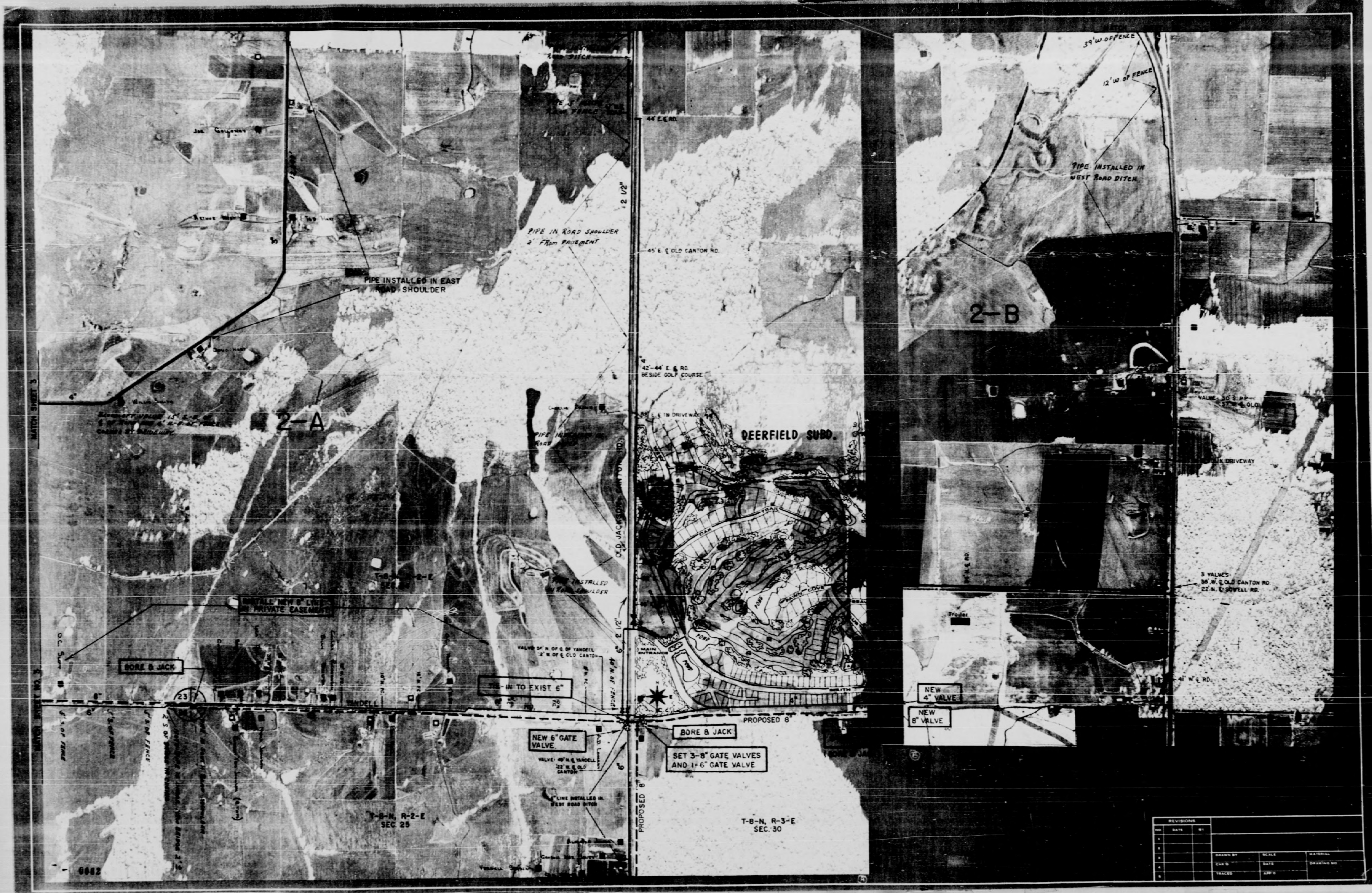


N

0061

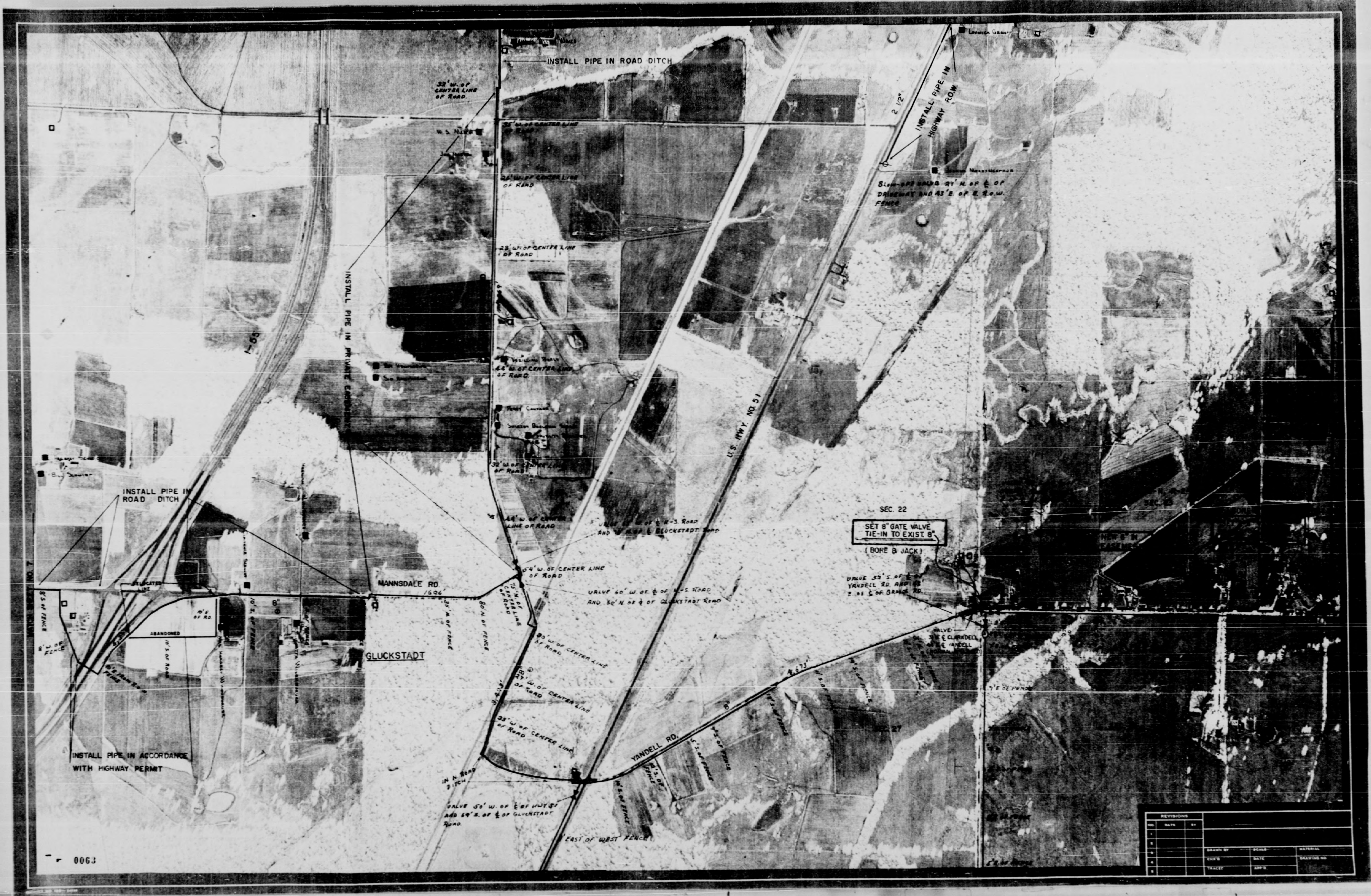
REVISIONS	
NO.	DATE BY

N



REVISIONS		
NO.	DATE	BY

DESIGNED BY	SCALE	DRAWN BY
CHECKED BY	DATE	DRAWING NO.
APPROVED BY	TITLE	DATE

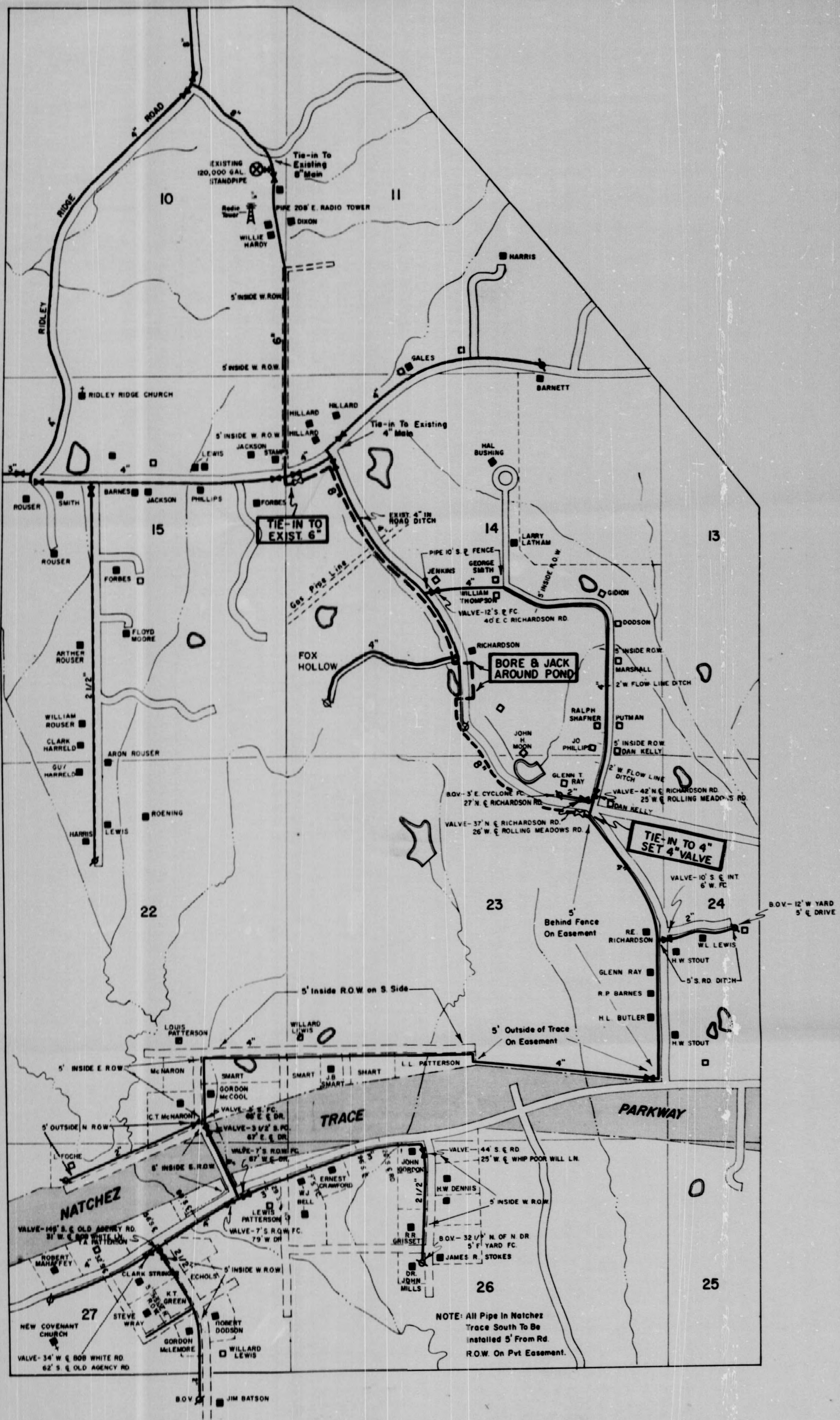


N

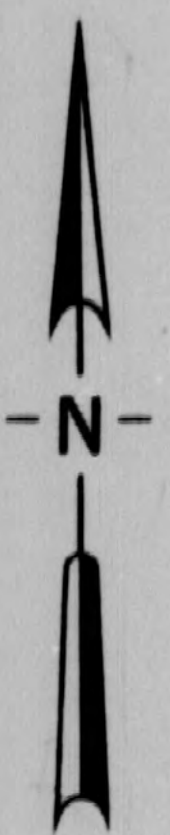
0063

REVISIONS		
NO.	DATE	BY
1		
2		
3		
4		
5		

DRAWN BY	SCALE	DATE	REVISION NO.

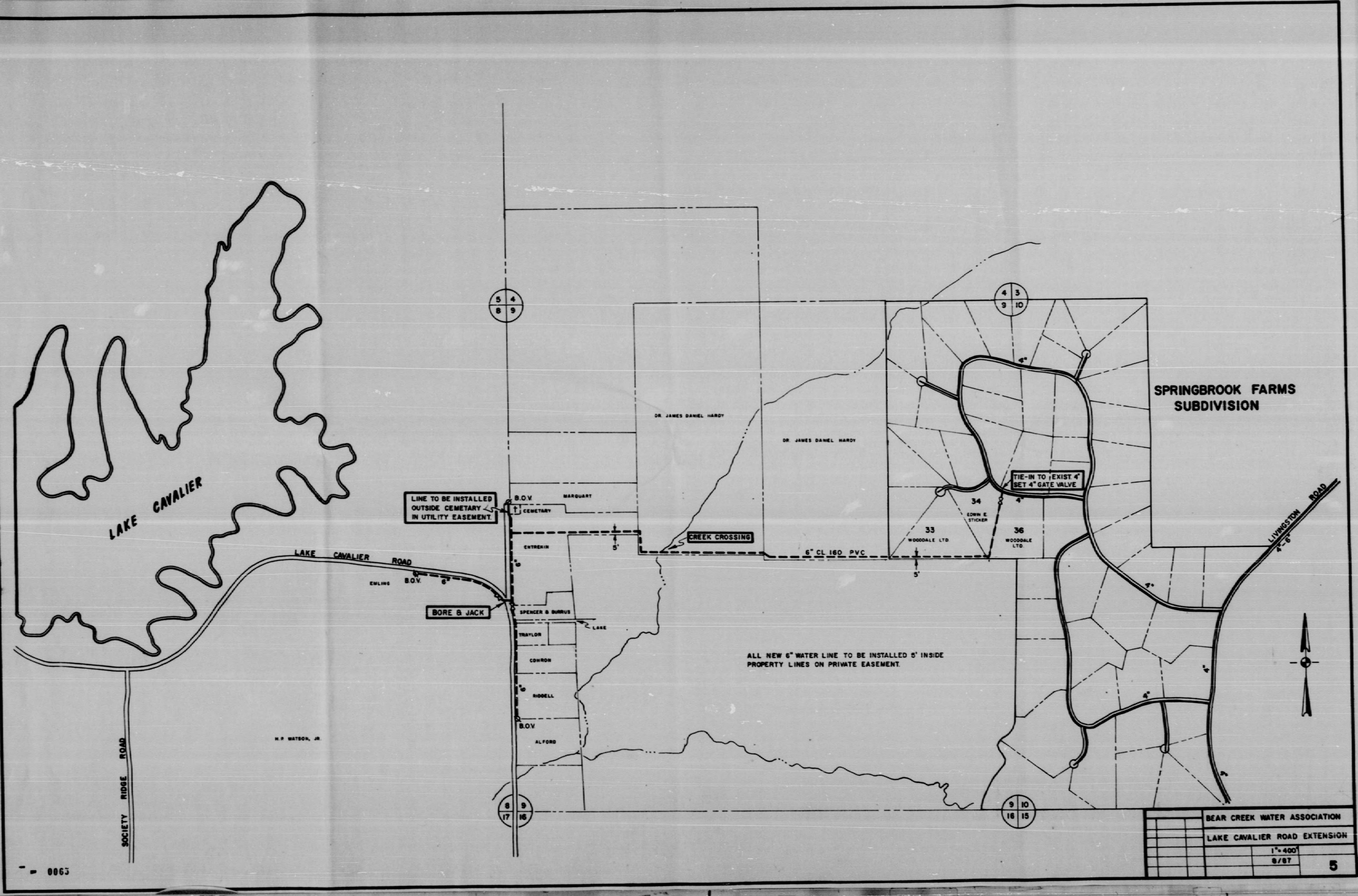


NATCHEZ TRACE SOUTH AREA
T-7-N, R-1-E



REVISION	DATE	BY	DESCRIPTION
1	12/27	JAE	BEAR CREEK EXTENSION NUMBER 2 DISTRIBUTION SYSTEM
2		JAE	
3		JAE	
4		JAE	

NOTE: All Pipes in Natchez Trace South To Be Installed 5' From Rd. ROW On Pvt Easement.



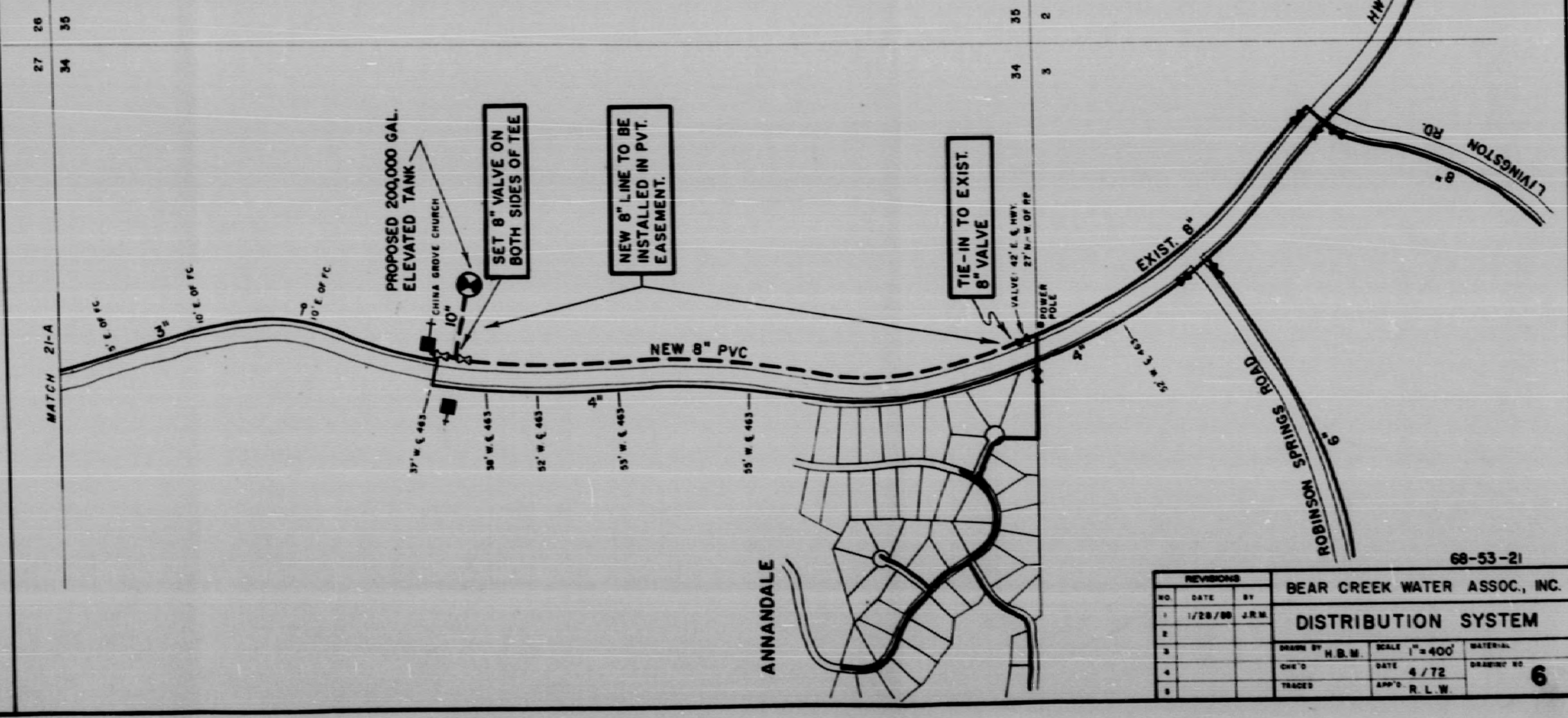
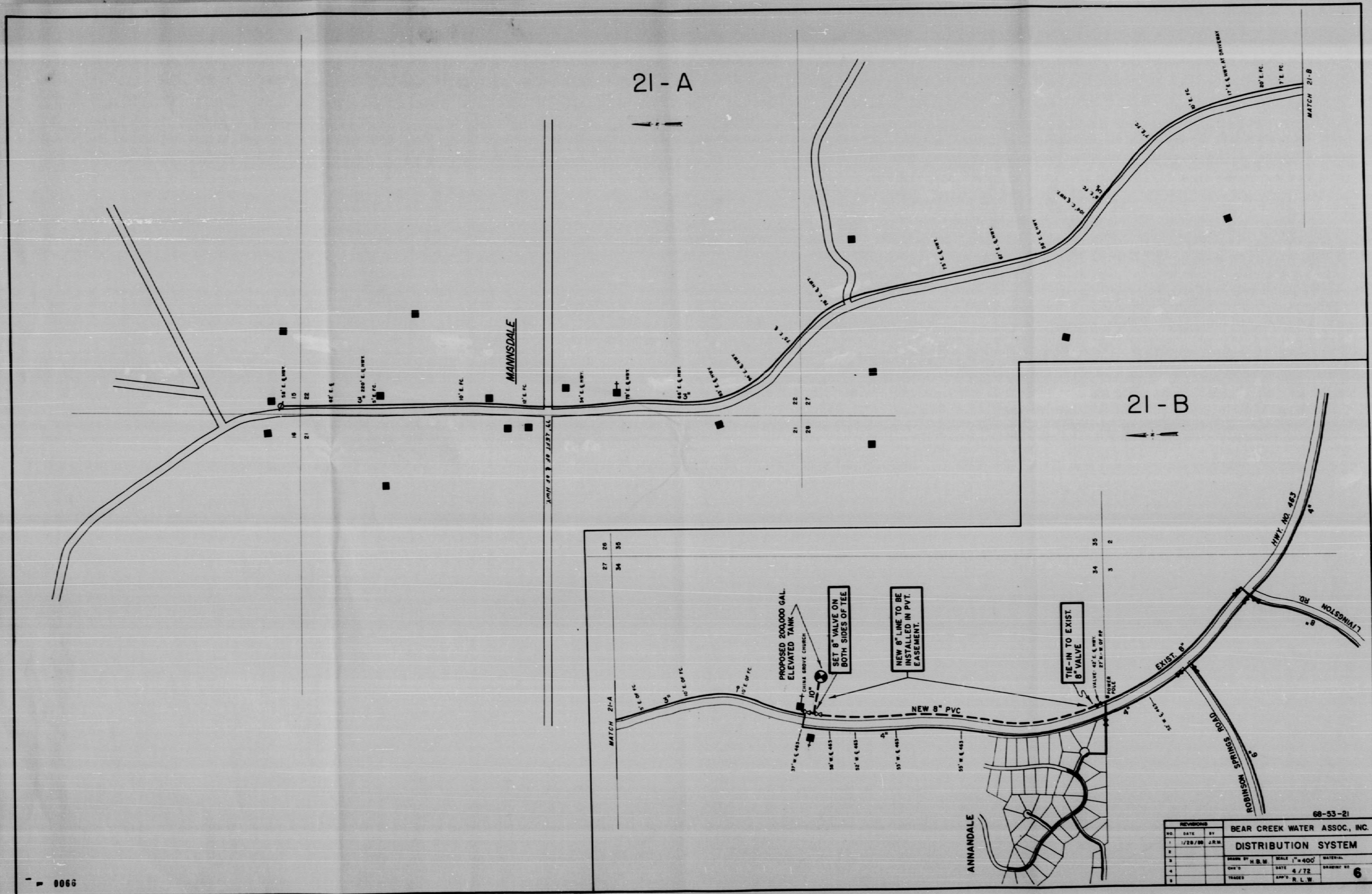
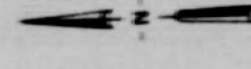
NI

0065

21-A



21-B

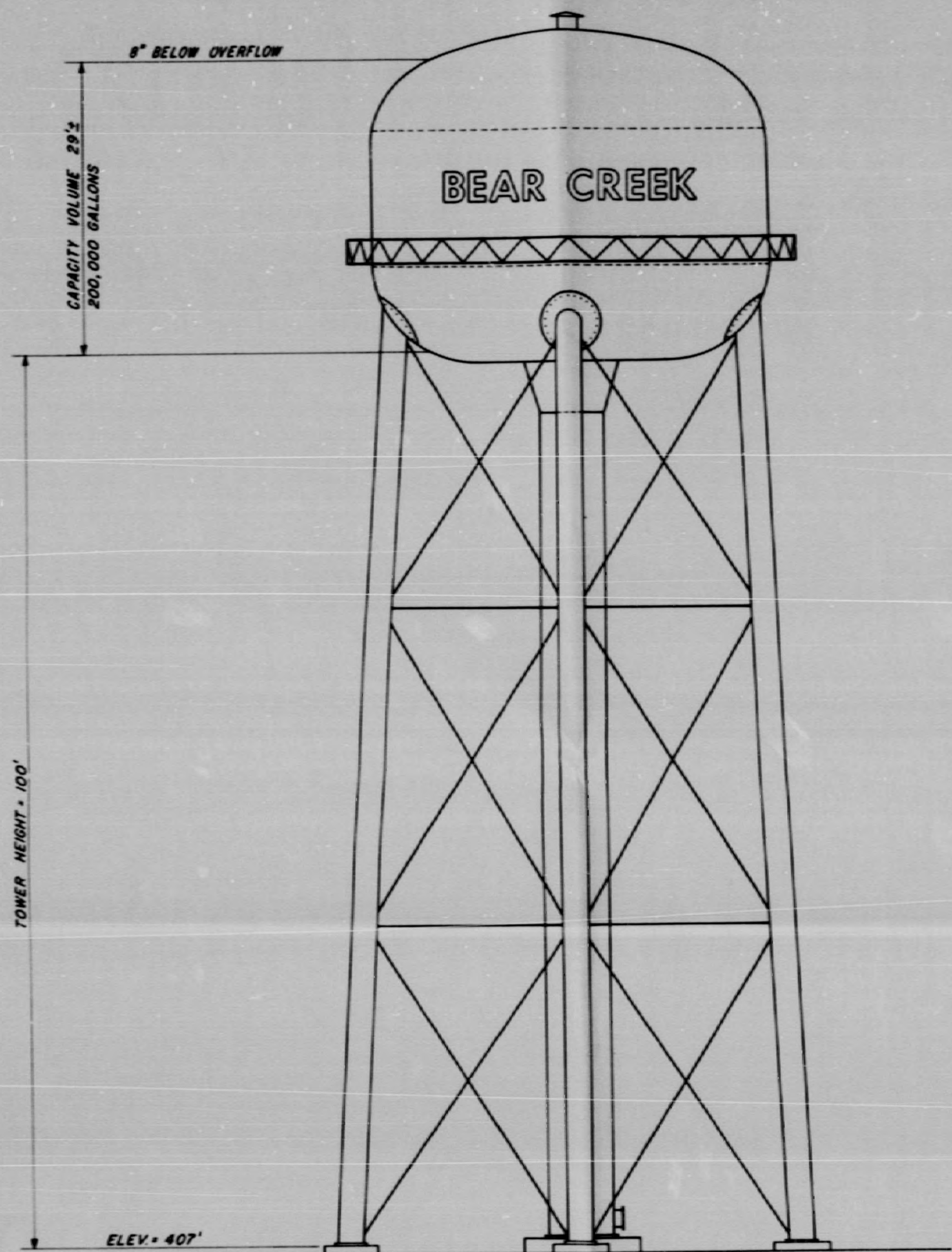


68-53-21

REVISIONS		BEAR CREEK WATER ASSOC., INC.	
NO.	DATE	BY	DATE
1	1/28/70	J.R.W.	
DISTRIBUTION SYSTEM		SCALE	1"=400'
DESIGNED BY	H.R.W.	DATE	4/72
CHECKED BY		APP'D BY	R.L.W.
TRACED		DRAWING NO.	6

0066

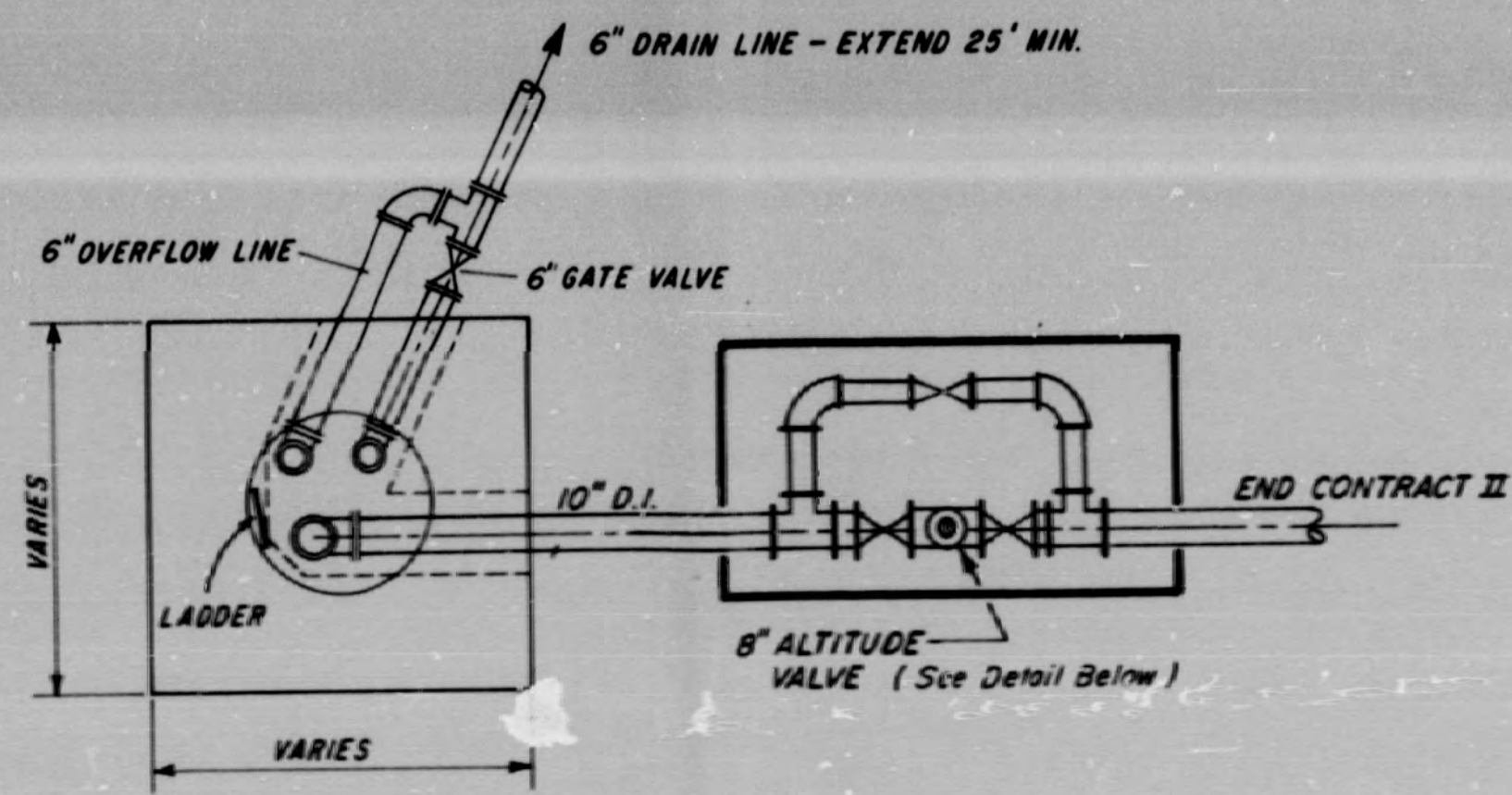




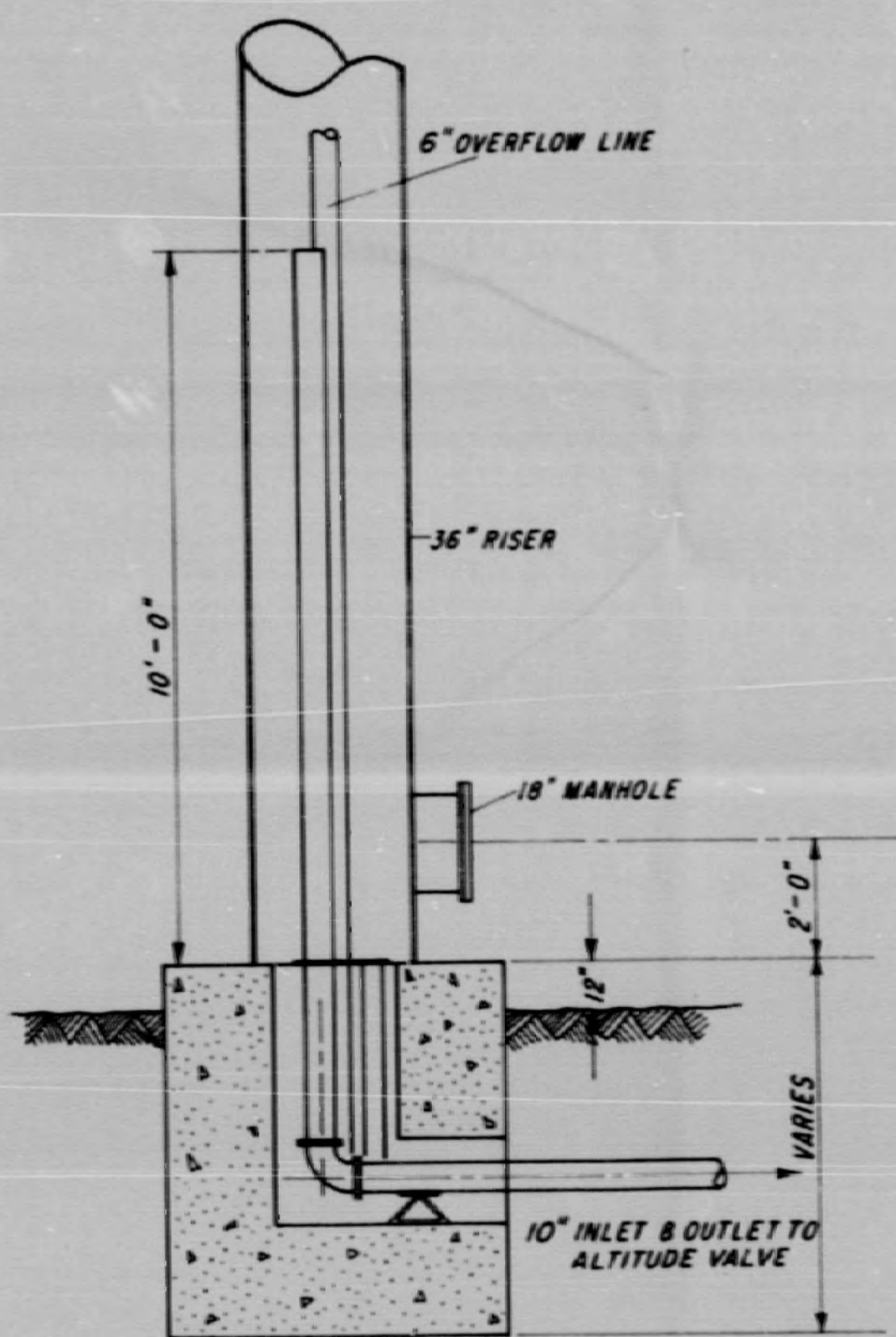
ELEVATED STORAGE TANK

NO. 3

NOTE: TOWER AND RISER FOUNDATIONS TO BE DESIGNED ACCORDING TO SPECIFICATIONS

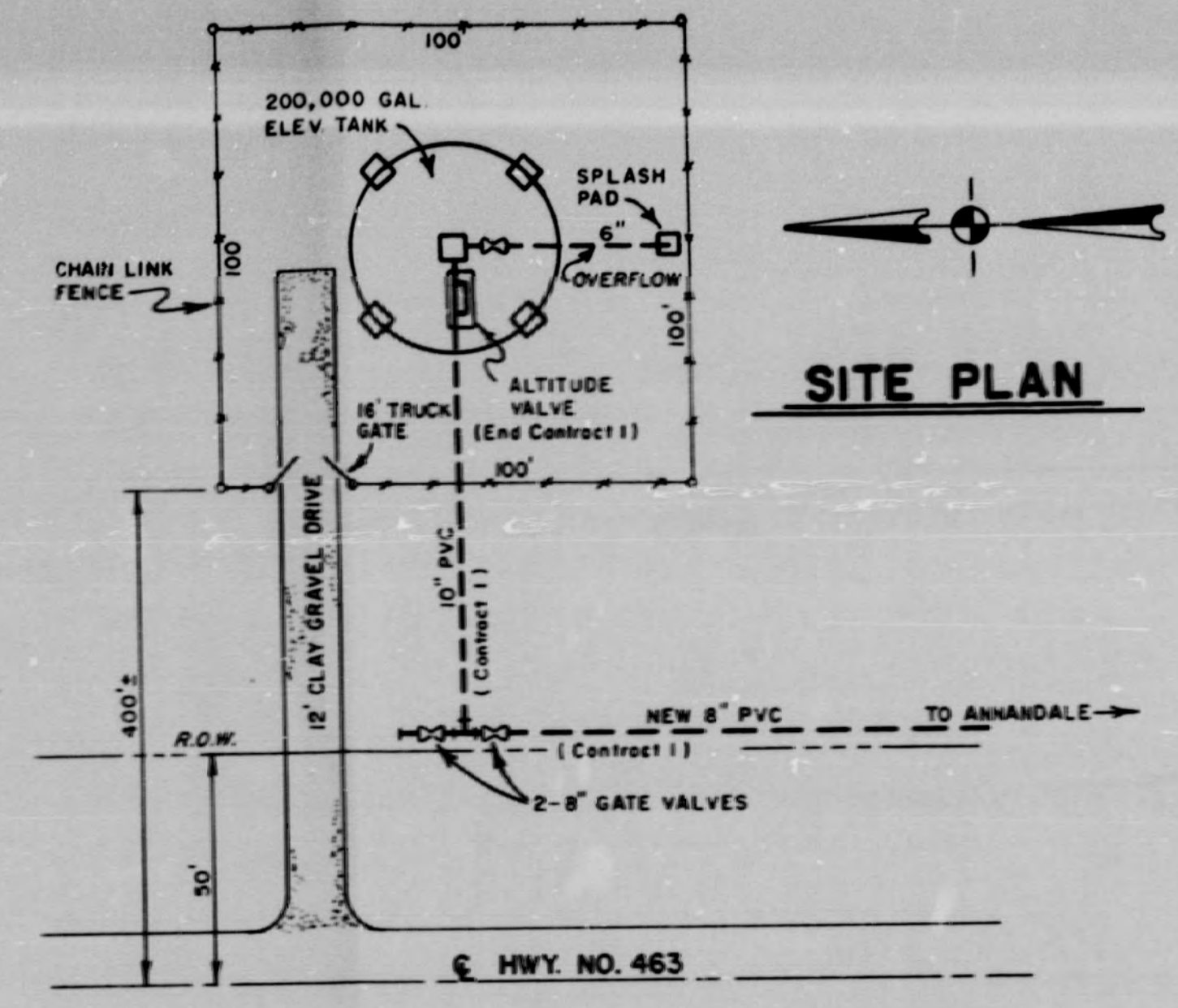


RISER DETAIL - PLAN

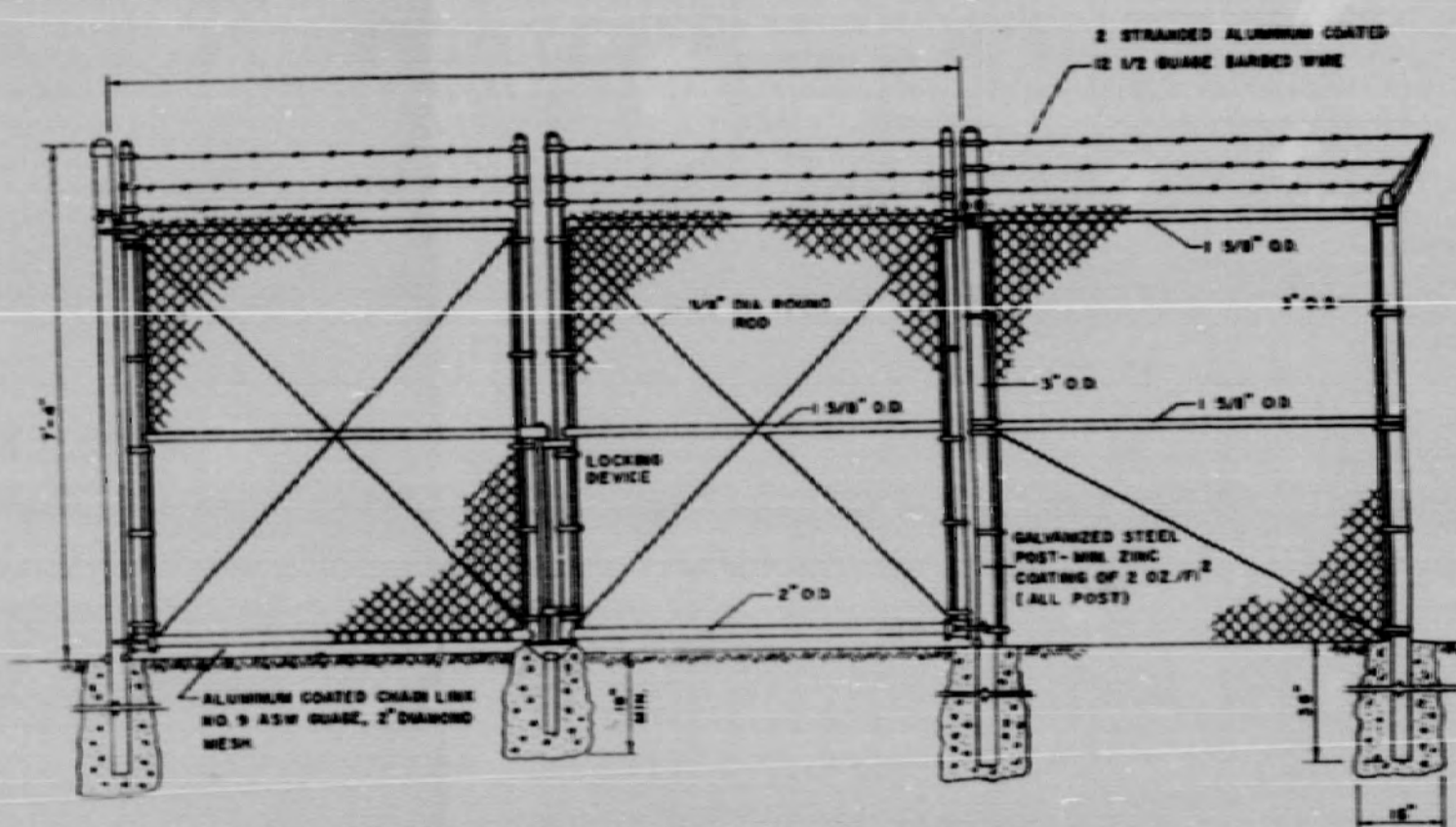


RISER DETAIL - ELEVATION

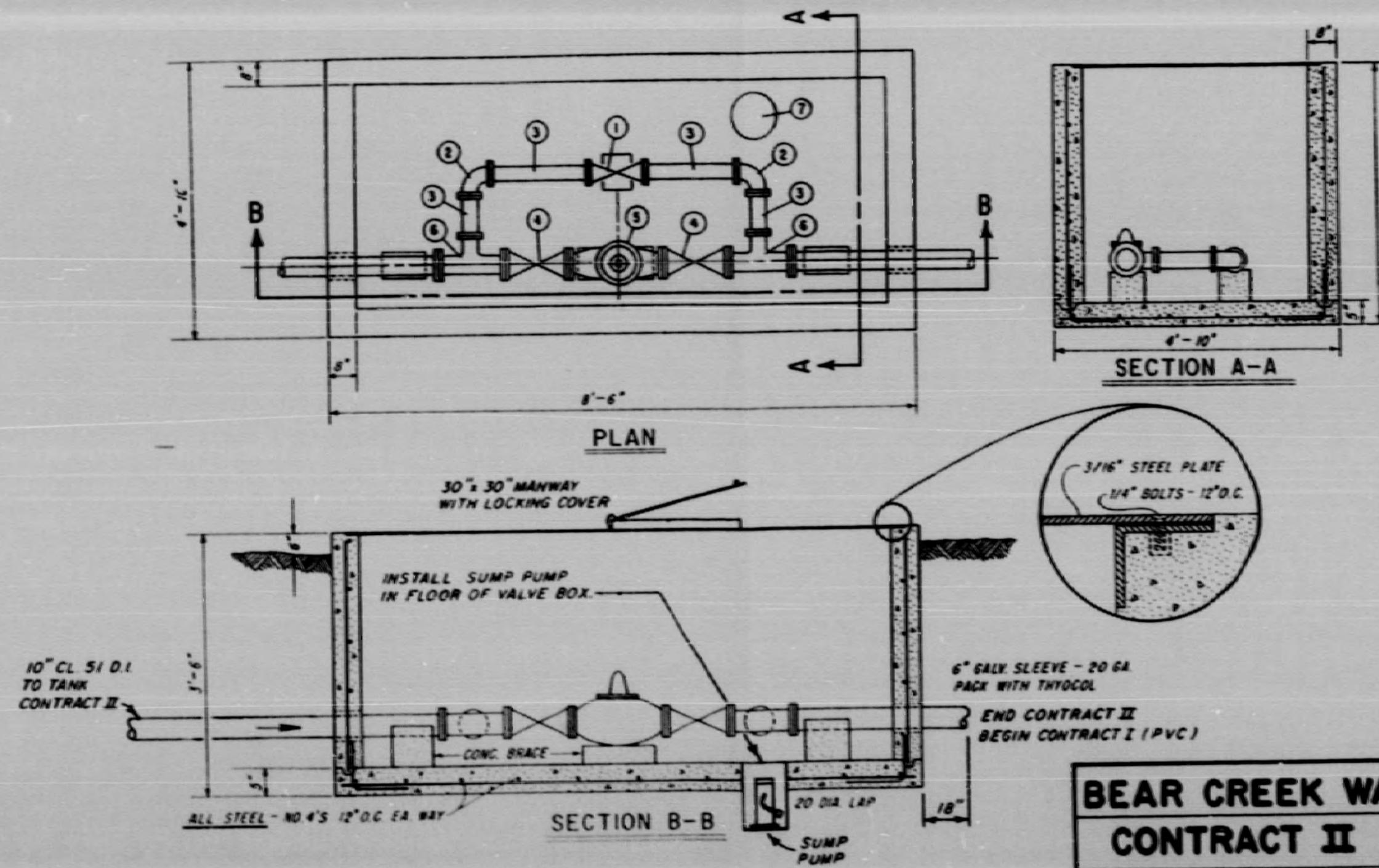
- ① 6" GATE VALVE - FLANGED ENDS - A.W.W.A. APPROVED.
- ② 8" 90° D.I. ELBOW - FLANGED ENDS - CL 51
- ③ 6" CI C150 PIPE SPOOL
- ④ 8" GATE VALVE - FLANGED ENDS - A.W.W.A. APPROVED.
- ⑤ 8" SINGLE ACTING ALTITUDE VALVE
- ⑥ 10" x 8" CLASS 51 REDUCING TEE.
- ⑦ SUMP PUMP



SITE PLAN



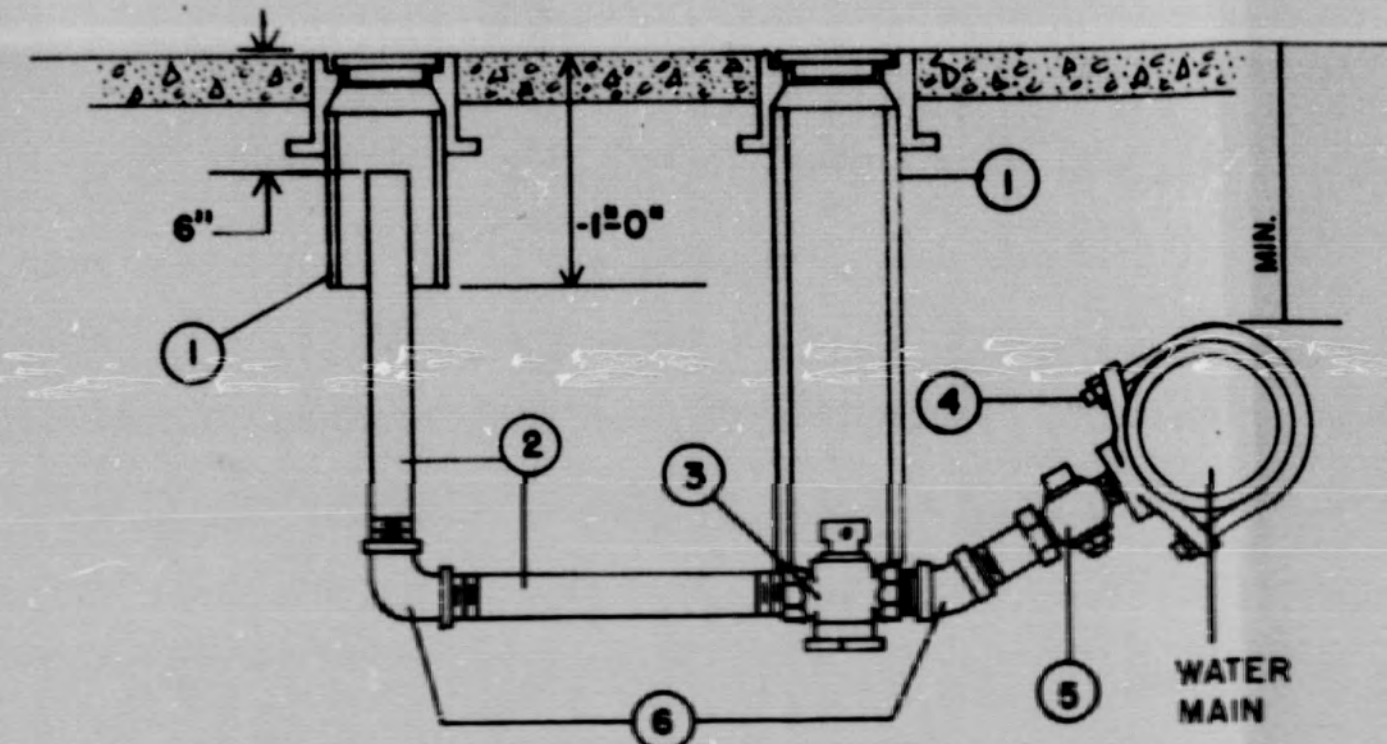
TYPICAL TRUCK GATE - TYPICAL FENCE CORNER



ALTITUDE VALVE DETAILS

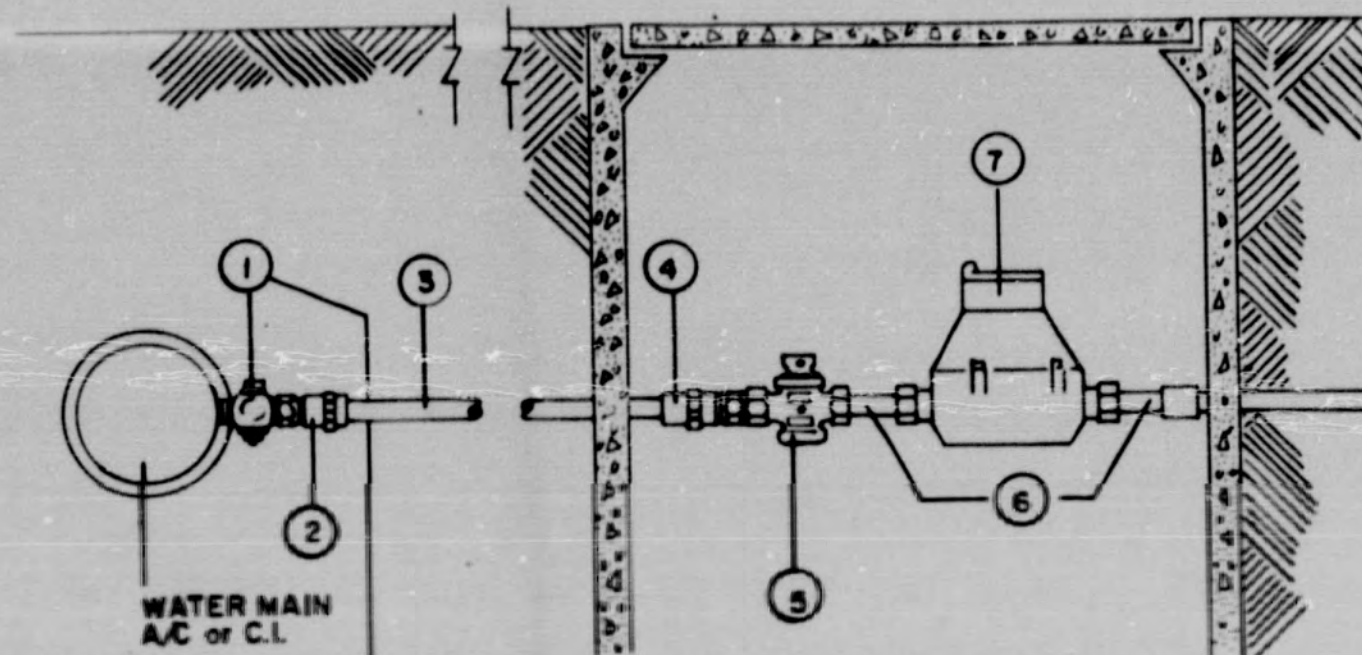
BEAR CREEK WATER ASSOC.			
CONTRACT II		SCALE	DRAWN BY P.I.G.
		N/A	REVISED
ELEVATED TANK DETAILS			
DATE	APPROVED	DRAWING NO.	
2/88	J.A.E.		7





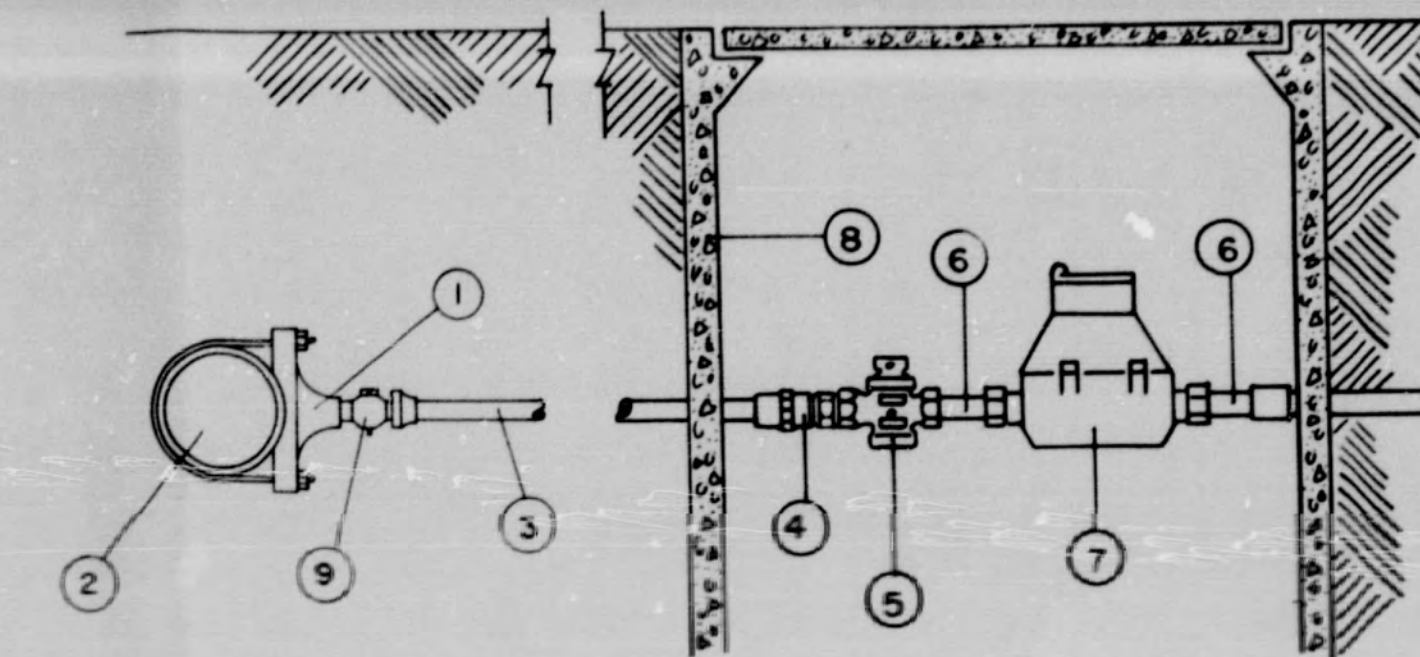
ITEM NO.	NO. REQ'D.	DESCRIPTION	MATERIAL SPECIFICATIONS
1	1	VALVE BOX EXTENSION, CAST IRON FACE AND LID.	BROOKS 3RT
2		GALVANIZED IRON PIPE	
3	1	VALVE - SCREWED ENDS	MUELLER H-1029I
4	1	SERVICE CLAMP	MUELLER DOUBLE STRAP
5	1	CORPORATION STOP	MUELLER H-10012
6	2	GALVANIZED BENDS	

TYPICAL 1 1/4", 1 1/2" AND 2" BLOW-OFF ASSEMBLY



ITEM NO.	NO. REQ'D.	SIZE AND DESCRIPTION	MATERIAL SPECIFICATIONS
1	1	CORPORATION STOP	1" H-10013 or 3/4" H-15000
2	1	1" x 3/4" TRANSITION FITTING P.V.C.	MUELLER H-12216
3		3/4" P.V.C. PLASTIC PIPE or 3/4" COPPER SERVICE PIPE	
4	1	3/4" TRANSITION FITTING P.V.C.	MUELLER H-12211
5	1	3/4" ORISEAL VALVE	MUELLER H-10283 or H-15174
6	2	3/4" METER COUPLINGS	MUELLER H-10891
7	1	5/8" x 3/4" WATER METER	
8	1	CONCRETE METER BOX	BROOKS

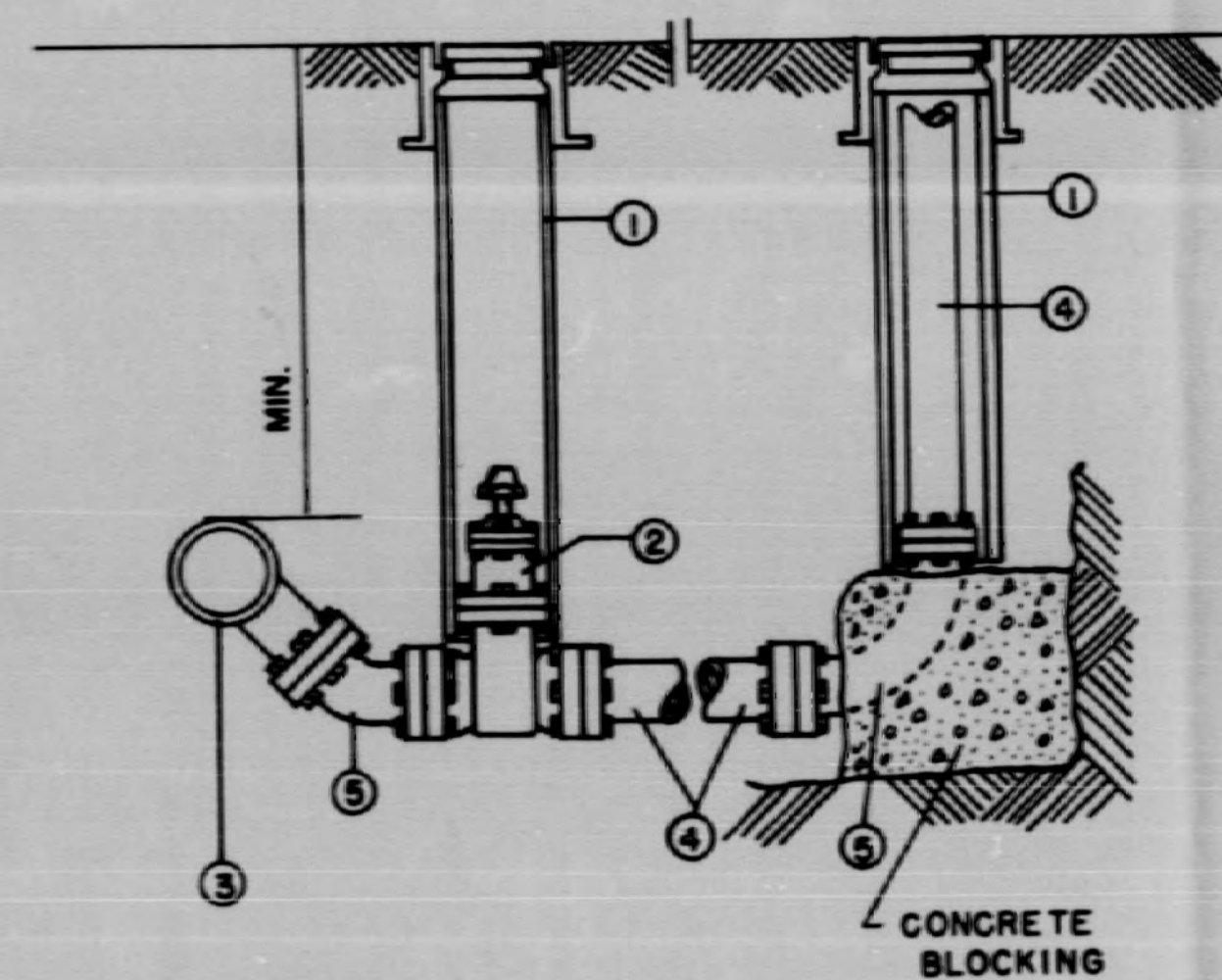
TYPICAL SERVICE ASSEMBLY CONNECTING TO ASBESTOS CONCRETE OR CAST IRON MAIN



ITEM NO.	NO. REQ'D.	SIZE AND DESCRIPTION	MATERIAL SPECIFICATIONS
1	1	SERVICE CLAMP	MUELLER - DOUBLE STRAP
2	1	P.V.C. MAIN	POLYVINYL-CHLORIDE TYPE II
3	1	3/4" I.P. SIZE P.V.C. SERVICE LINE	POLYVINYL-CHLORIDE TYPE II (CL-200)
4	1	3/4" TRANSITION FITTING P.V.C.	MUELLER H-12211
5	1	METER VALVE	MUELLER H-1029I
6	2	3/4" METER COUPLINGS	MUELLER H-10891
7	1	5/8" x 3/4" WATER METER	
8	1	CONCRETE METER BOX	BROOKS
9	1	CORPORATION STOP	MUELLER H-10012

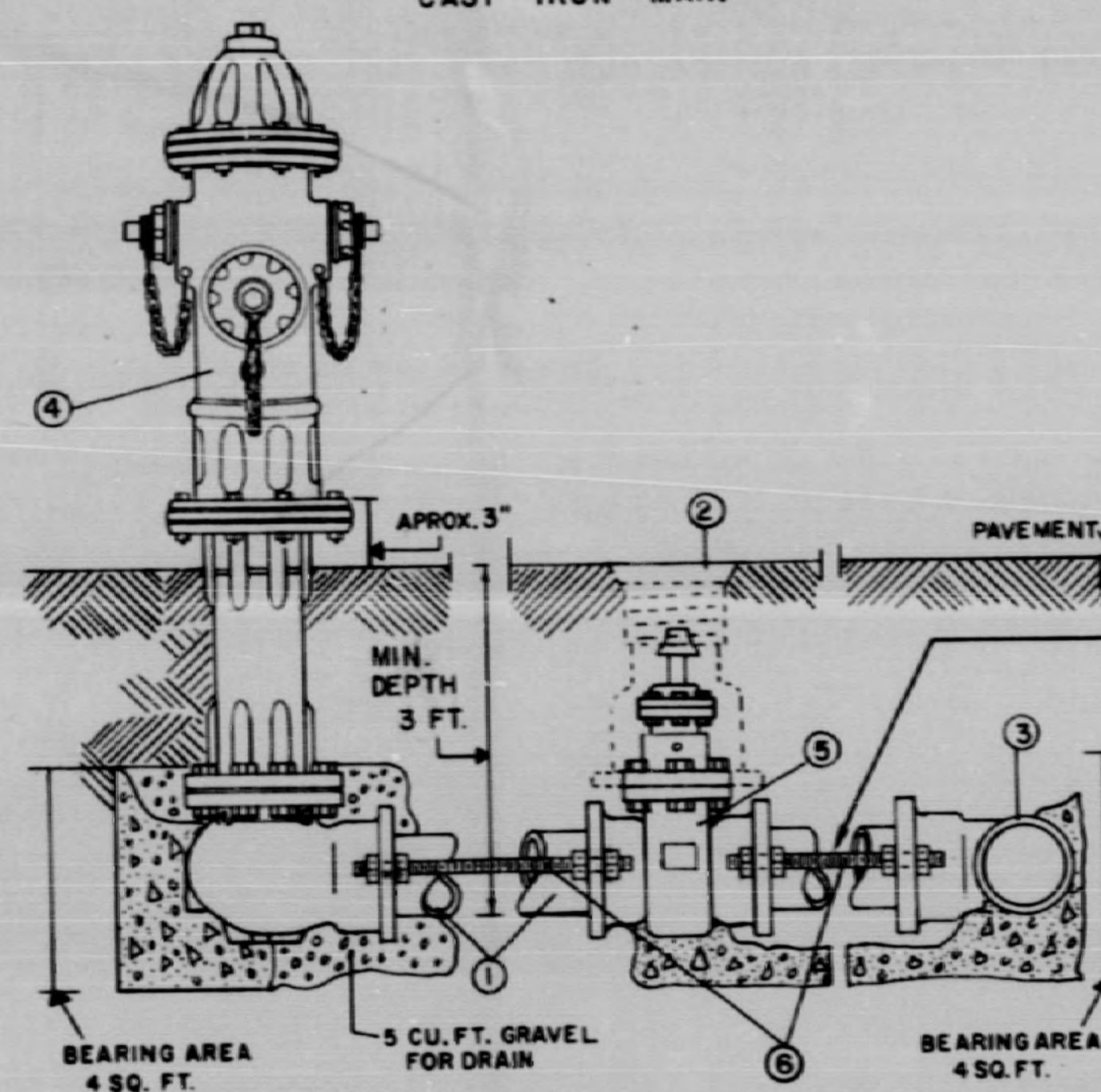
*OTHER SIZES MAY BE REQUIRED

TYPICAL SERVICE ASSEMBLY CONNECTING TO P.V.C. MAIN



ITEM NO.	NO. REQ'D.	DESCRIPTION	MATERIAL SPECIFICATIONS
1	2	VALVE BOX WITH CAST IRON FACE AND LID	BROOKS 3RT
2	1	M.J. GATE VALVE	MUELLER A-2380-20
3	1	CAST IRON TEE - M.J. ONE END	
4	2	CAST IRON PIPE (M.J.)	
5	2	CAST IRON BENDS - PLAIN ON BOTH ENDS	

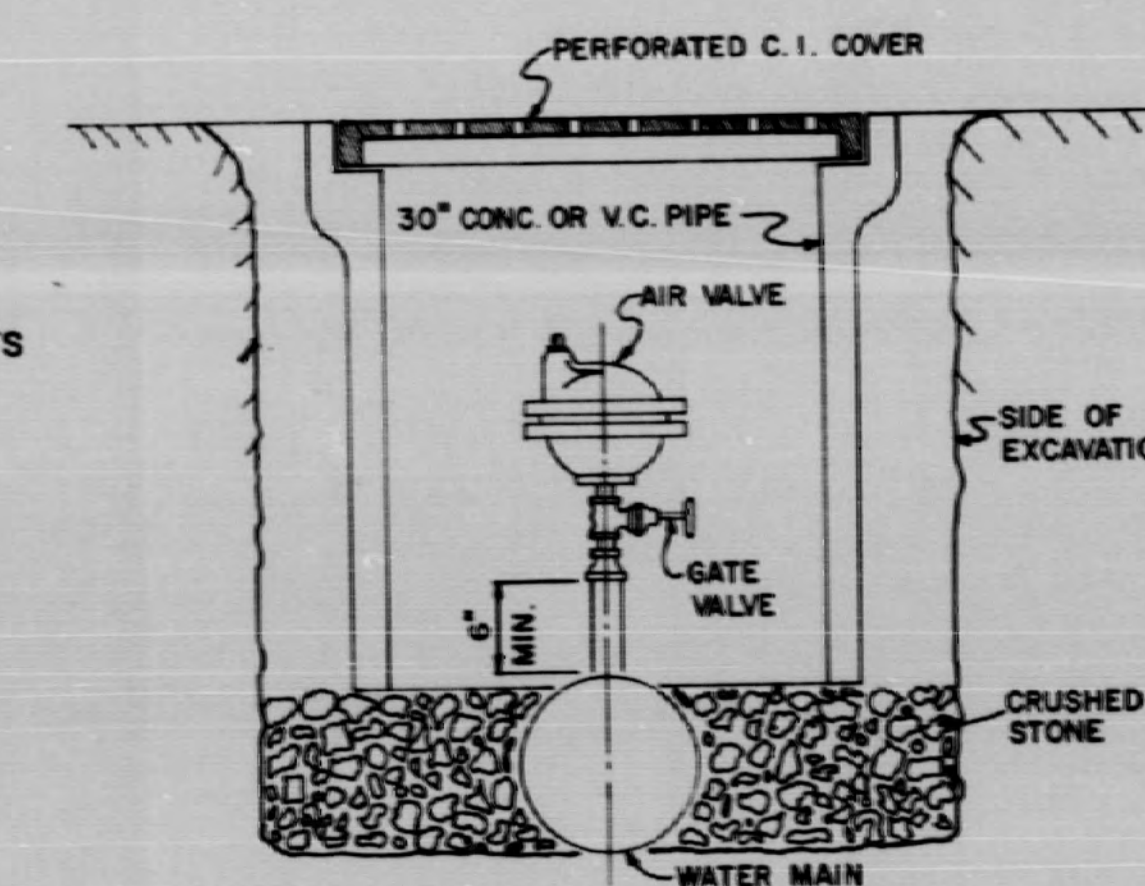
TYPICAL BLOW-OFF ASSEMBLY 3" AND LARGER



ITEM NO.	NO. REQ'D.	DESCRIPTION AND MATERIAL	6" or LARGER	4" MAIN
1	1	PIPE 3'-0" LONG	6"	4"
2	1	VALVE BOX - MUELLER H-10360	461-S	461-S
3	1	CAST IRON TEE	RUN (MAIN SIZE) OUTLET (6")	4" x 4" x 4"
4	1	FIRE HYDRANT (THREE WAY)	A-425 6" INLET	A-421 4" INLET
5	1	GATE VALVE - MUELLER A-2380-20 FOR C.I. PIPE, A-2380-24 FOR A/C PIPE	SAME SIZE AS MAIN	SAME SIZE AS MAIN
6	4	5/8" ALL-THREAD BARS WITH OVERSIZE NUTS		

TYPICAL FIRE HYDRANT AND AUXILIARY VALVE ASSEMBLY
IF TWO WAY HYDRANT IS SPECIFIED IN BID FORM, CATALOG NO. FOR 6" IS A-422 FOR 4" IS A-420

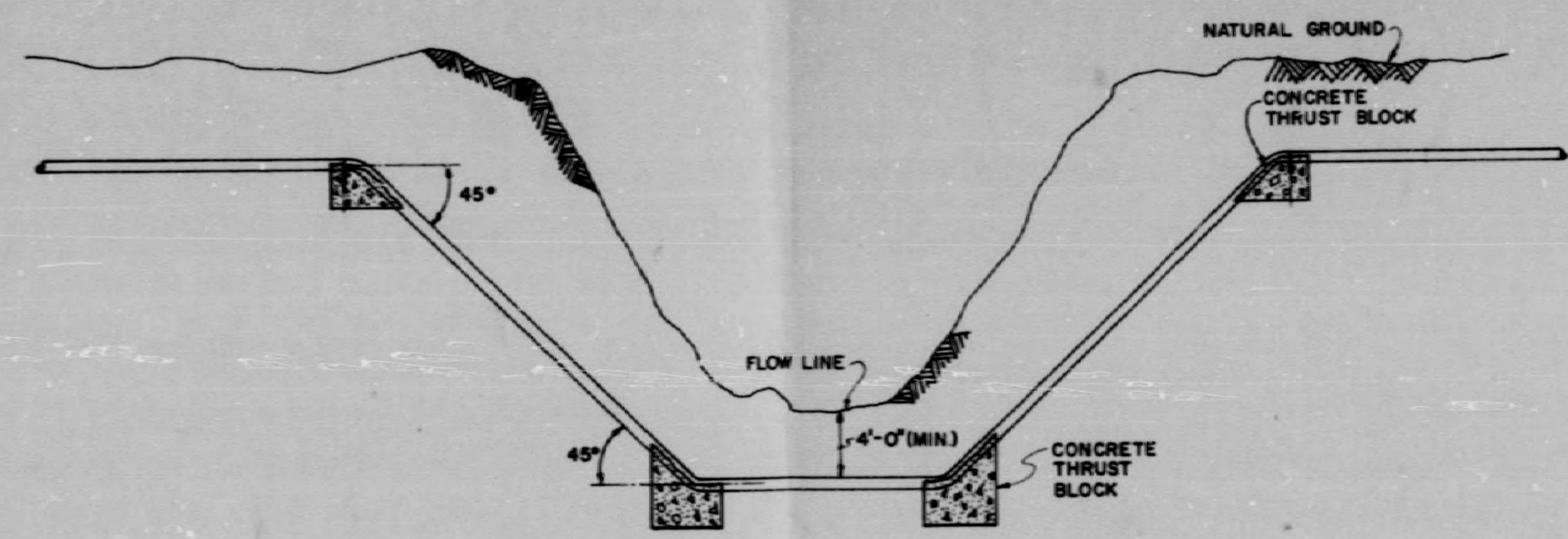
Note: FIRE HYDRANT VALVE NOT REQUIRED BY TOWN OF MEADVILLE.



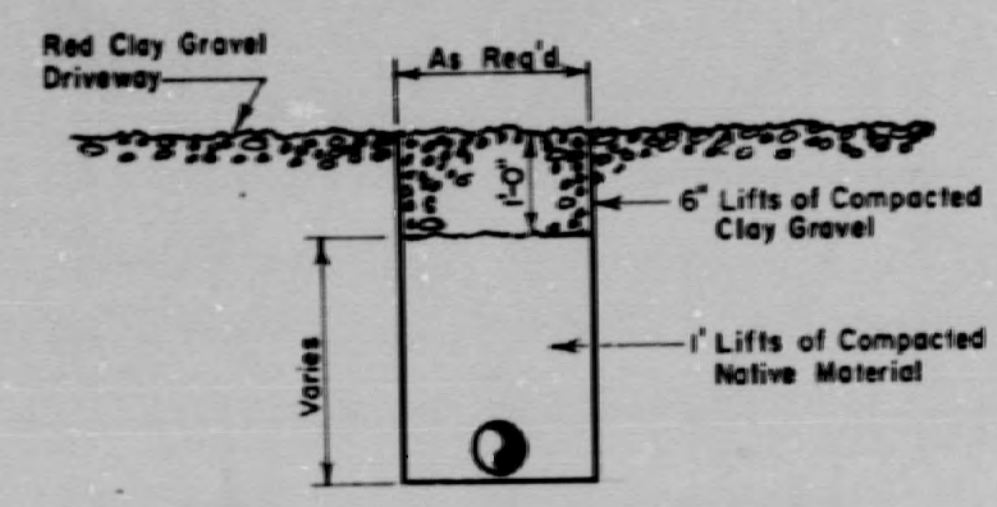
TYPICAL AIR VALVE SETTING

DATE	APPROVED BY	SCALE	DRAWN BY
		N/A	
STANDARD WATERWORKS DETAILS			

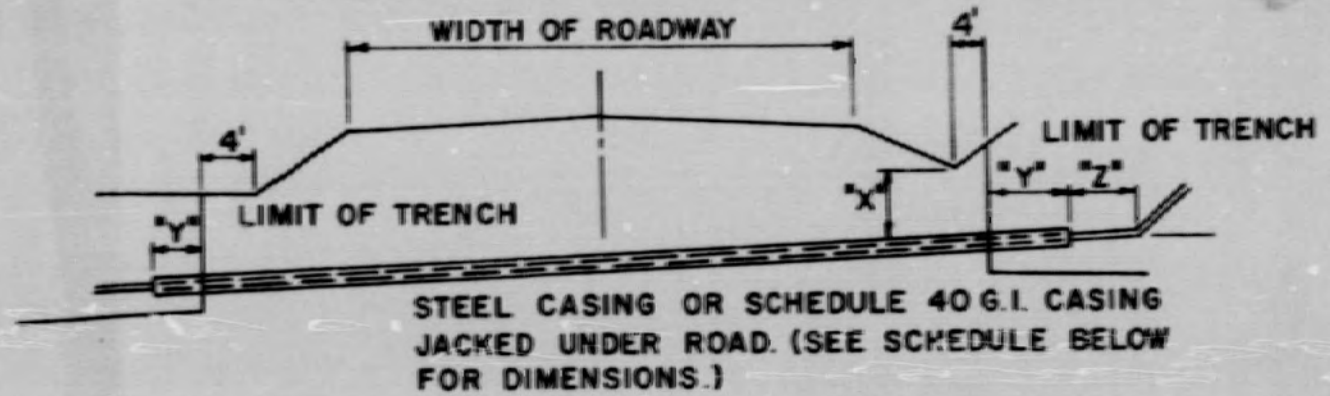
NI



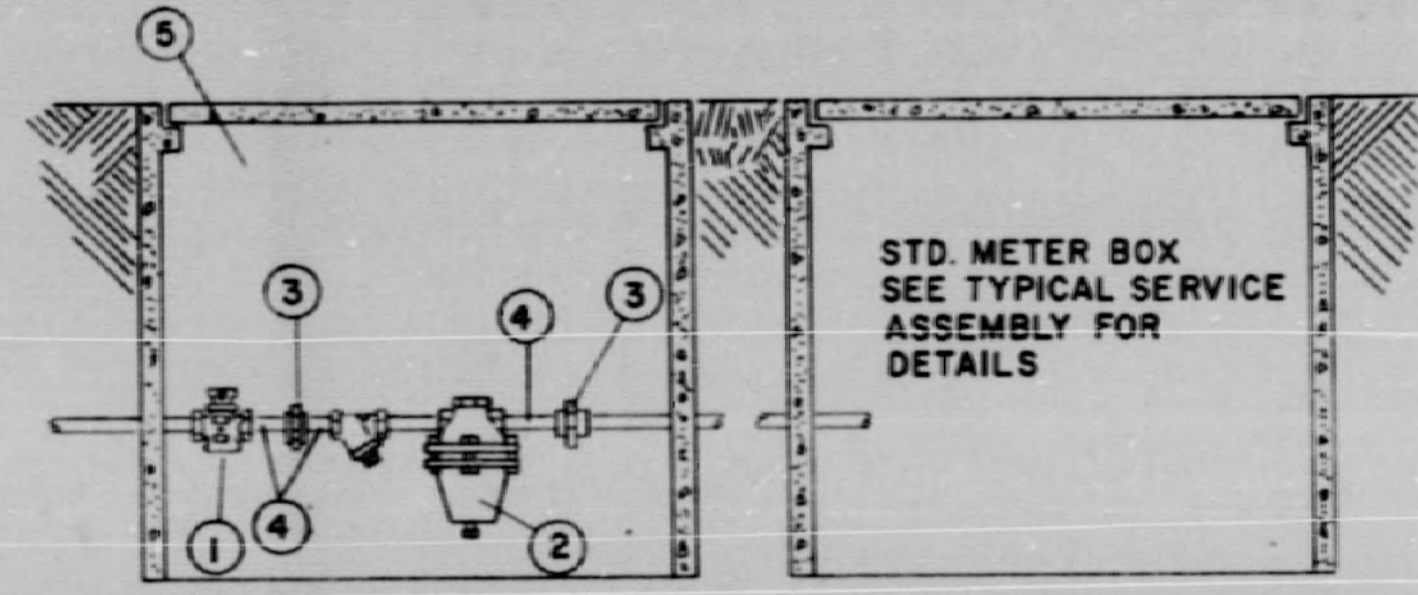
TYPICAL DITCH & CREEK CROSSING



DRIVEWAY REPAIR DETAIL



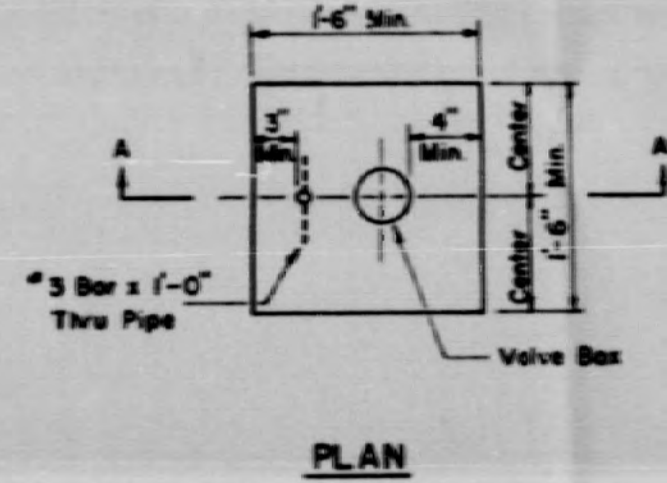
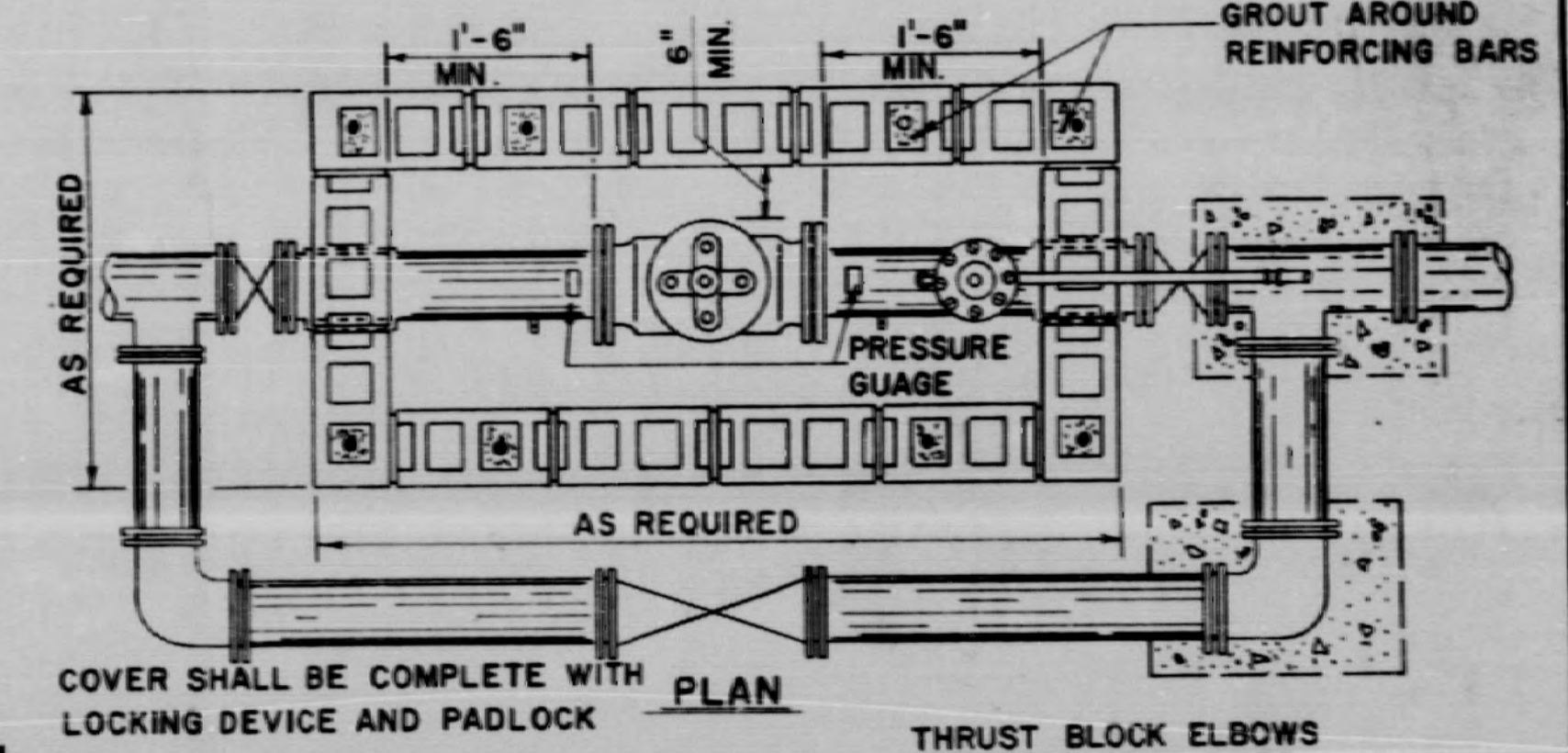
SCHEDULE OF DIMENSIONS					
CROSSING DESIGNATION	SIZE OF LINE	SIZE OF CASING	"x"	"x"	"x"
A	3/4" or 1"	2"	2'	2'	2'
B	1 1/2", 2" or 2 1/2"	4"	3'	2'	4'
C	4"	6"	4'	2'	4'
D	6"	8"	4'	2'	4'
E	8"	10"	4'	2'	4'
F	10"	12"	4'	2'	4'



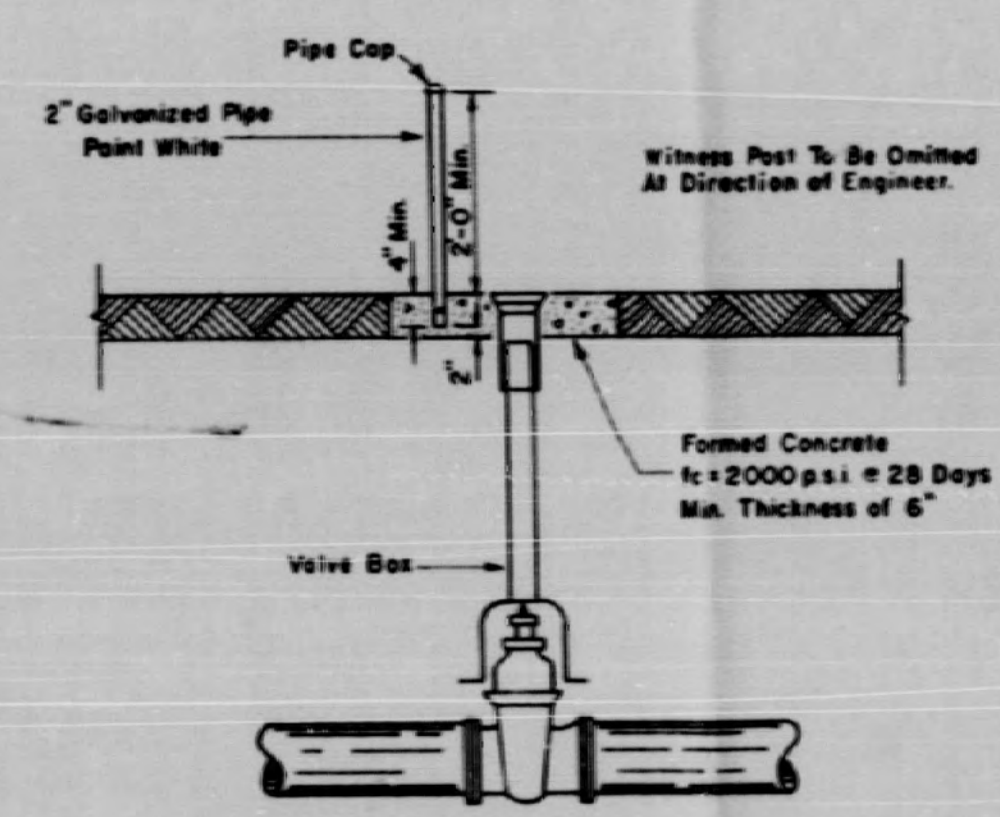
SERVICE PRESSURE REDUCER DETAIL

ITEM NO.	NO. REQD.	DESCRIPTION	MATERIAL SPECS.
1	1	VALVE-SCREWED ENDS	MUELLER H-10283
2	1	REGULATOR & STRAINER	MUELLER H-9300
3	2	UNIONS	GALVANIZED
4	3	CLOSE NIPPLES	GALVANIZED
5	1	CONCRETE METER BOX	BROOKS

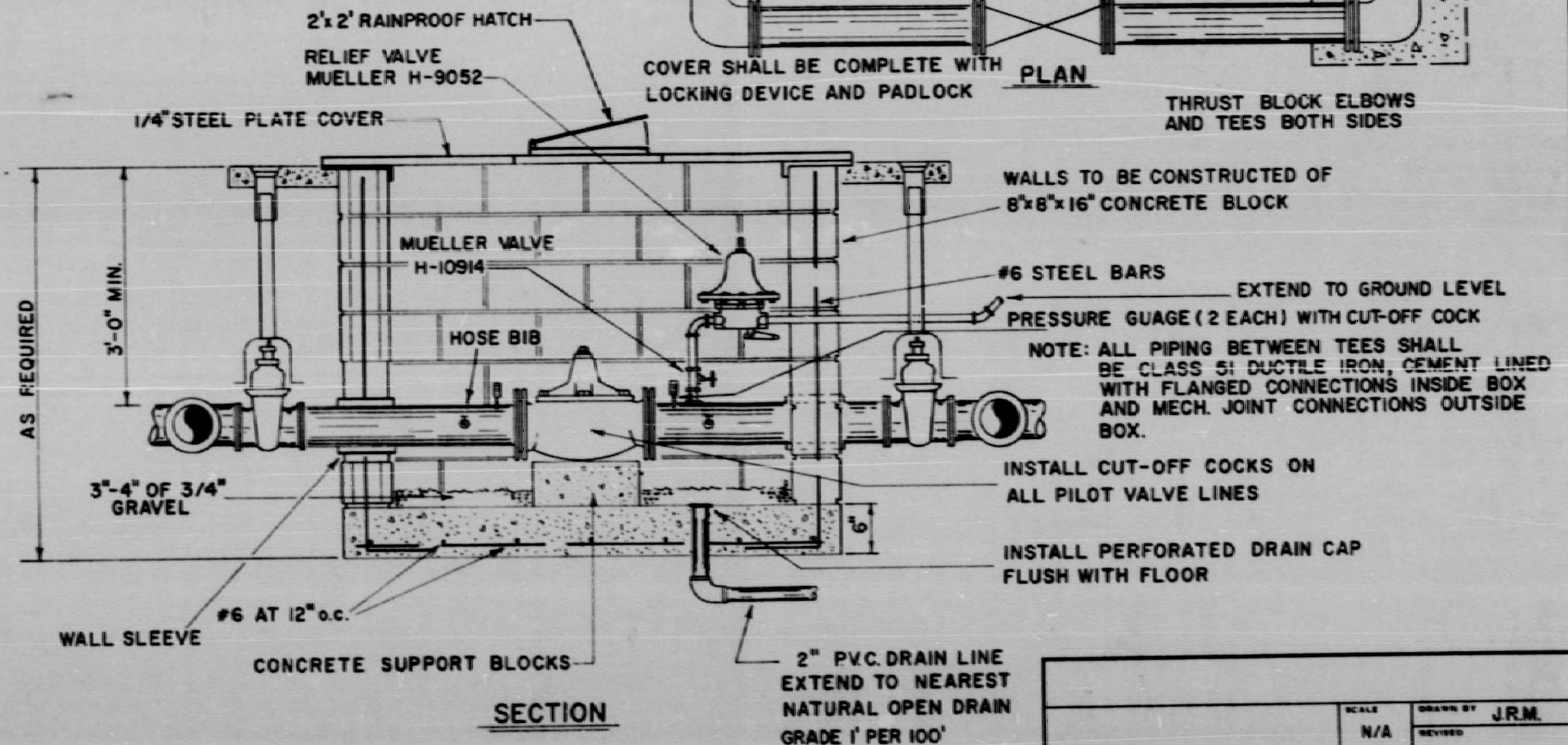
WATER LINE CROSSINGS-COUNTY ROADS



PLAN



TYPICAL LINE VALVE AND MARKER SETTING, 2" AND OVER
(BLOW-OFF VALVES SHALL BE MARKED IN A SIMILAR MANNER)



MAIN LINE PRESSURE REDUCER DETAILS

MISCELLANEOUS DETAILS			
SCALE	N/A	DRAWN BY	J.R.M.
DATE	APPROVED BY	REVISION	DRAWING NUMBER

