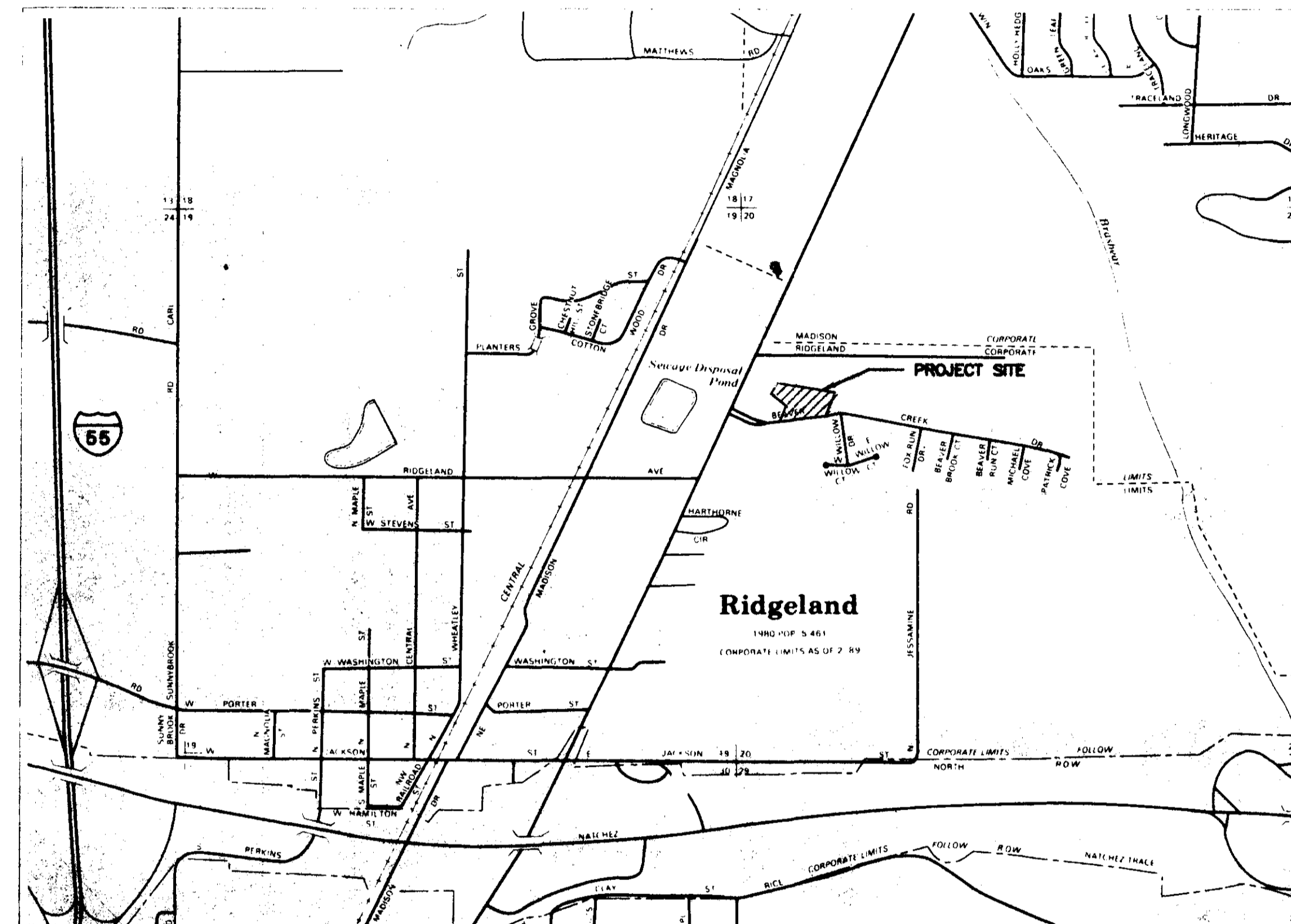


BRIDGE OVER BEAVER CREEK
CITY OF RIDGELAND
TENNIS CENTER
1998



Mayor:
Gene F. McGee



VICINITY MAP

Aldermen:

Ann Brame Assaf

Carole Davis

Scott Jones

Lisa DeCell Walters

Larry Roberts

Linda Davis Trunzler

Gerald Steen

Director Recreation and Parks:

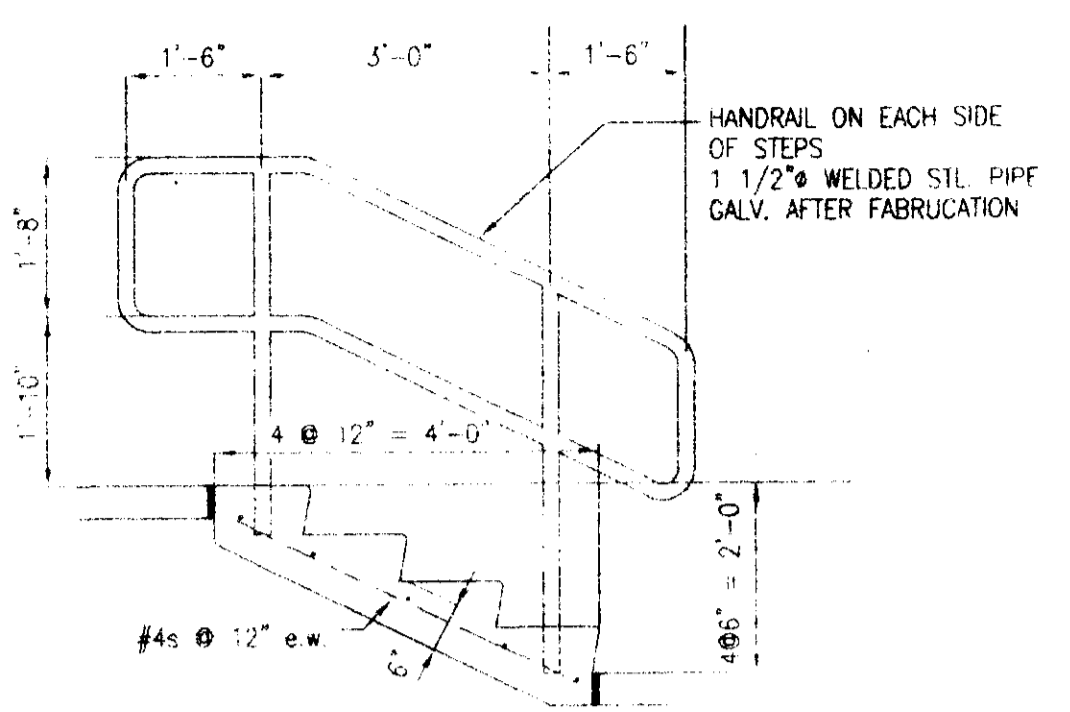
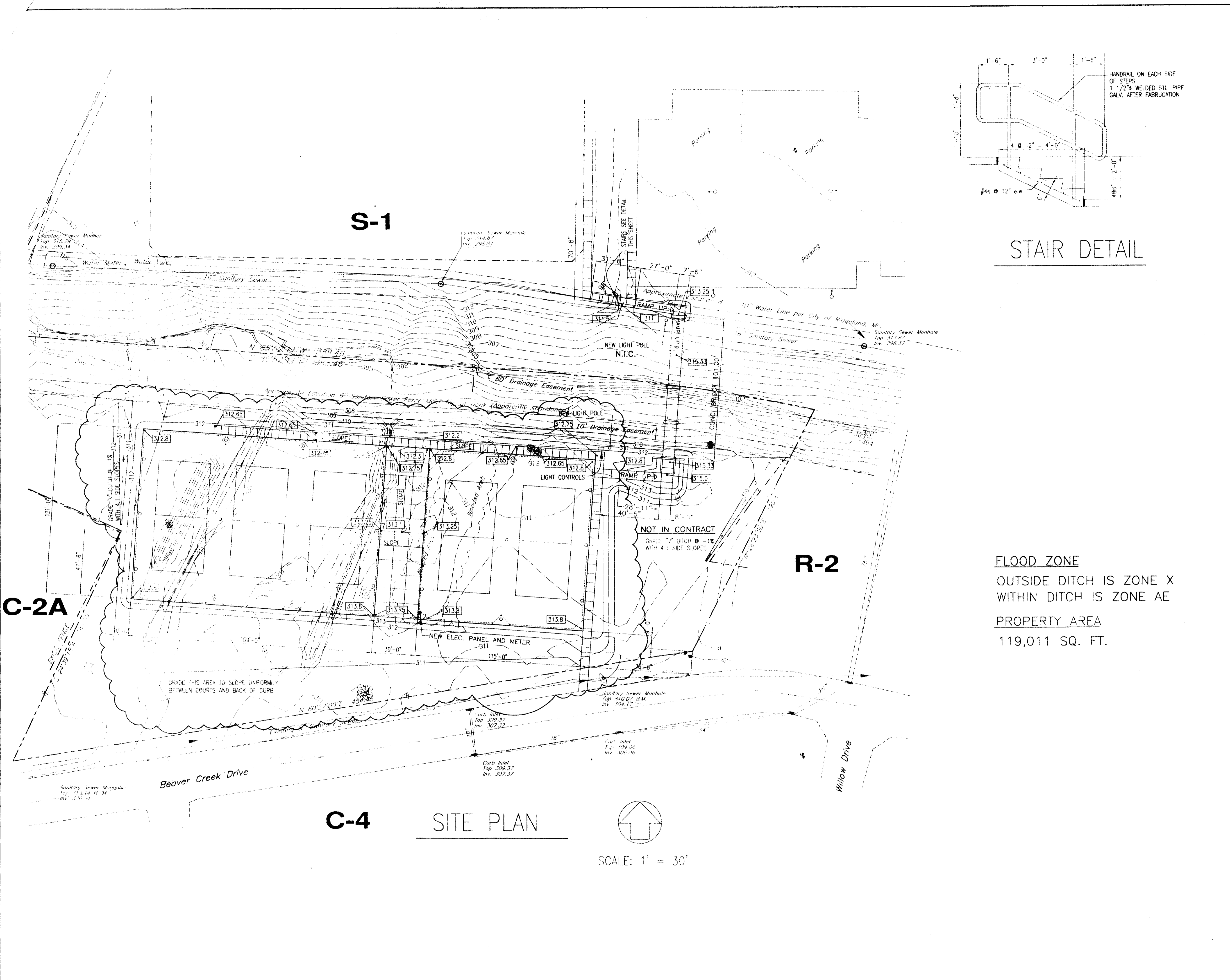
Eddie Tanner

COOKE DOUGLASS FARR LEMONS/LTD
ARCHITECTS & ENGINEERS

CDFL

3780 INTERSTATE 55 NORTH/JACKSON, MS 39211/(601)366-3110

PWP-00221



STAIR DETAIL

FLOOD ZONE
 OUTSIDE DITCH IS ZONE X
 WITHIN DITCH IS ZONE AE
PROPERTY AREA
 119,011 SQ. FT.

C-4 **SITE PLAN**
 SCALE: 1" = 30'

NO.	REVISION	DATE
1	DELETED TENNIS COURTS FROM CONTRACT	01/98

- GENERAL NOTES:**
1. CLEAR AND GRUB BRIDGE SITE.
 2. REMOVE SPOIL PILES AND TRASH PILES. REMOVE FENCES.
 3. STRIP BRIDGE SITE. STOCKPILE SUITABLE TOPSOIL FOR LATER USE. DISPOSE OF ALL UNSUITABLE MATERIAL.
 4. PROOF ROLL AREA UNDER NEW FILL USING LOADED DUMP TRUCK. REMOVE ANY SOFT OR UNSTABLE SOILS AND REPLACE WITH NEW SELECT FILL MATERIAL.
 5. ALL NEW SLOPES AND DISTURBED AREAS OF EXISTING SITE SHALL BE TOPSOILED AND TURFED. SEE SPECIFICATIONS.

COOKE DOUGLASS FARR LEMONS/LTD
 ARCHITECTS & ENGINEERS

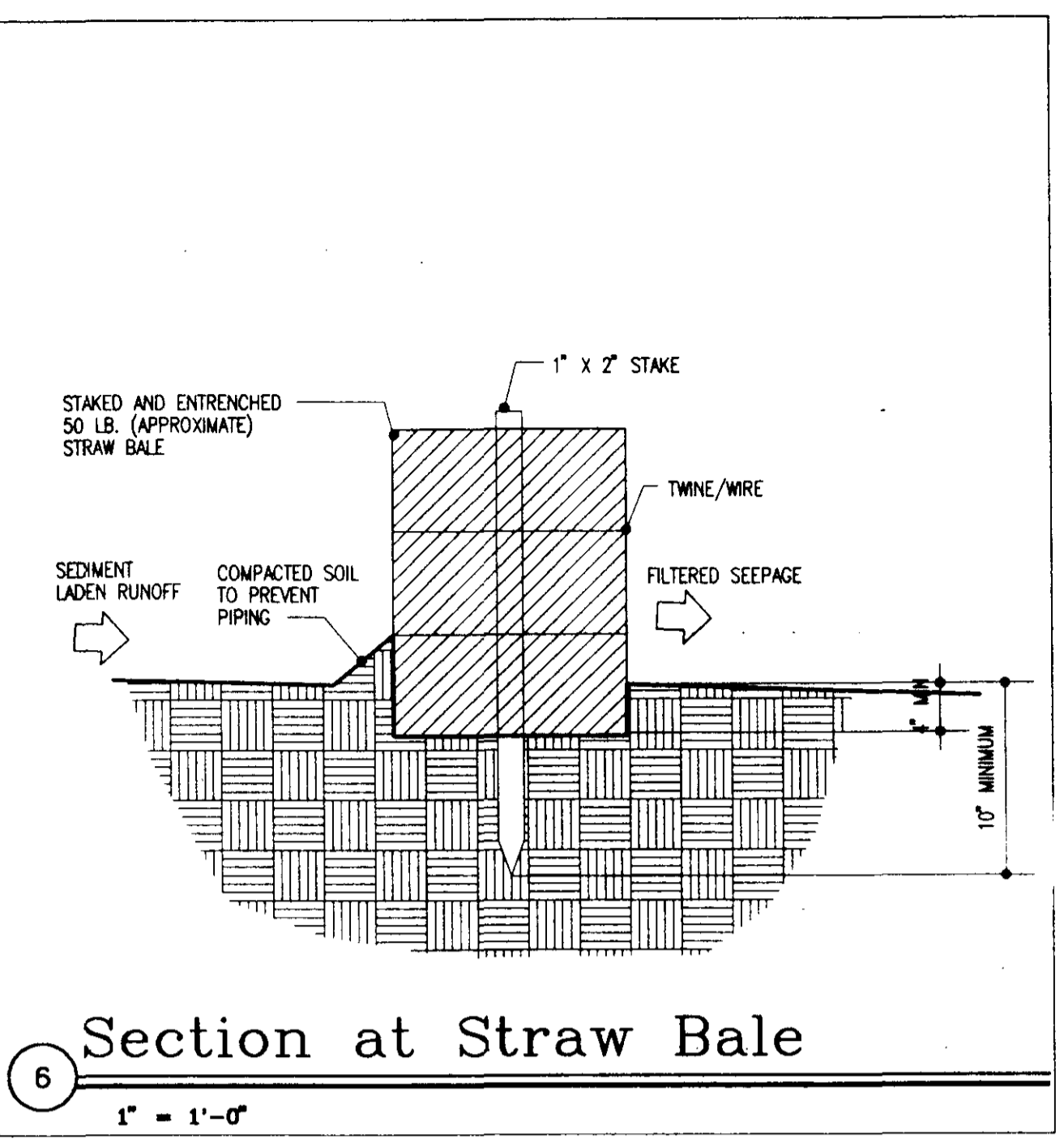
CDFL

3780 INTERSTATE 55 NORTH/JACKSON, MS 39211/(601)366-3110

PROJECT
City of Ridgeland
Tennis Center
BRIDGE OVER BEAVER CREEK
 Ridgeland, MS

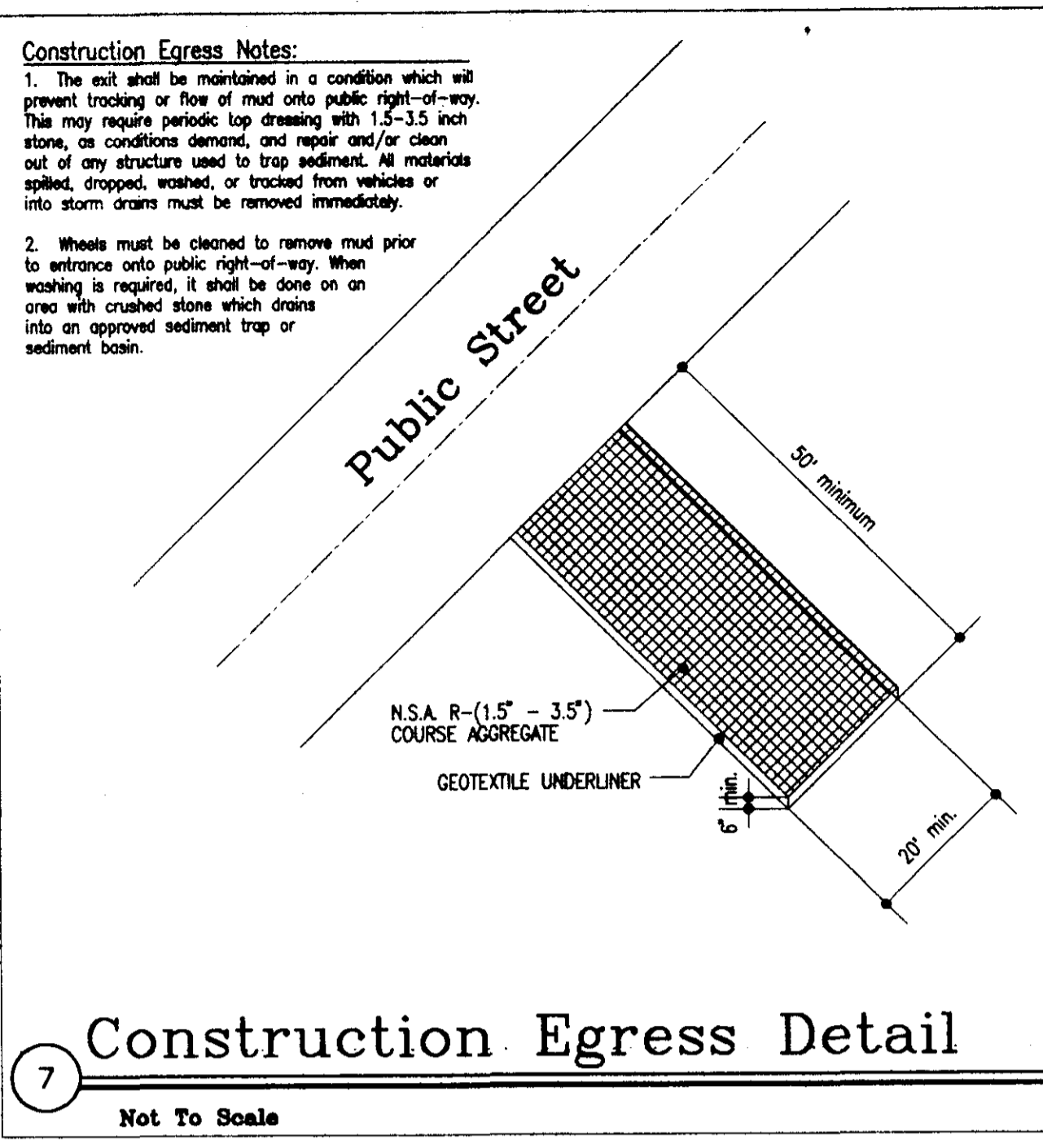
SHEET TITLE
 SITE PLAN
 GRADING AND DRAINAGE

	PROJECT NO. 97-220	SHEET NUMBER C-1
	DATE 01/98	
	DRAWN WILLIAMS	
	CHECKED COOKE	



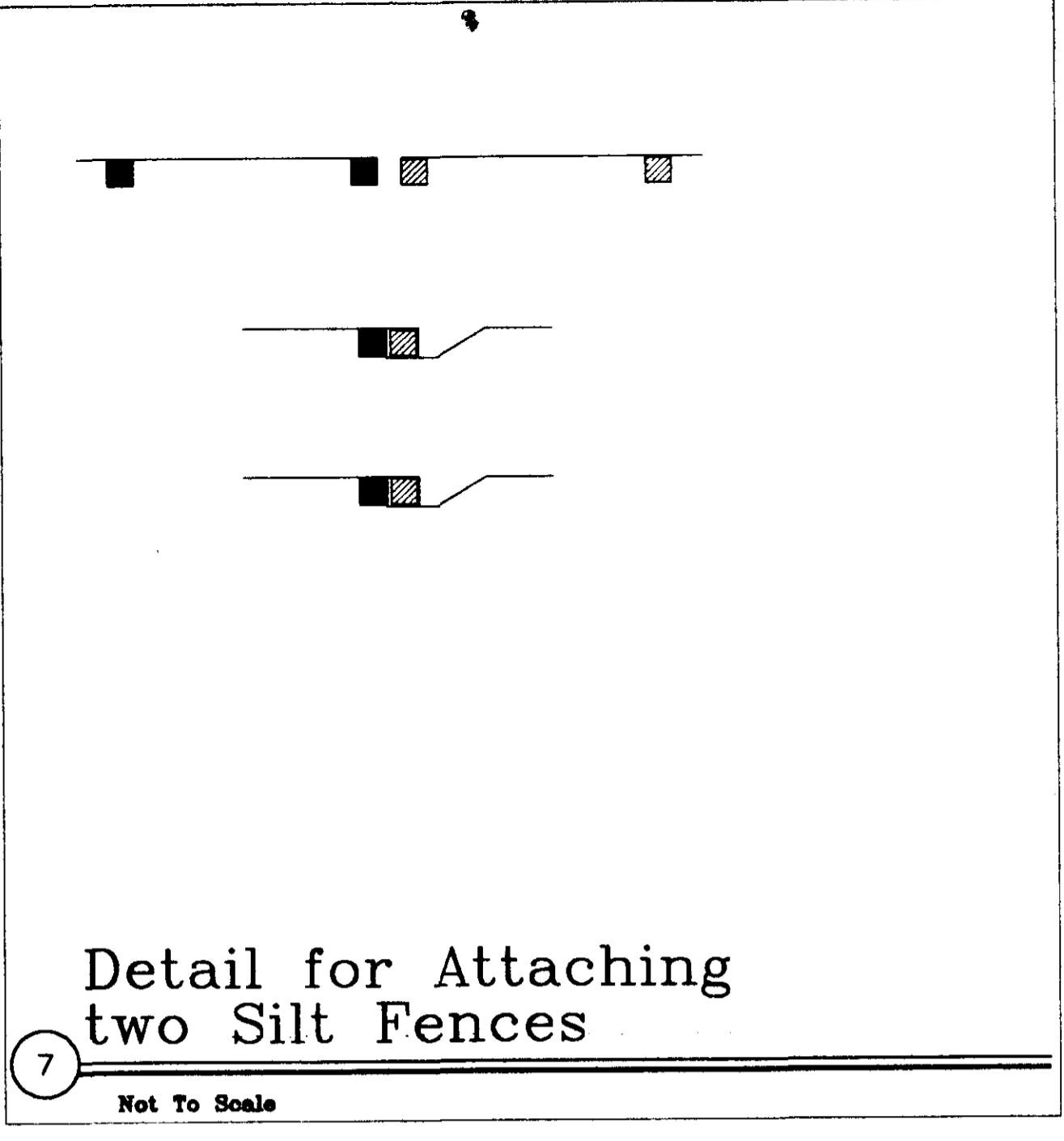
6 Section at Straw Bale

1" = 1'-0"



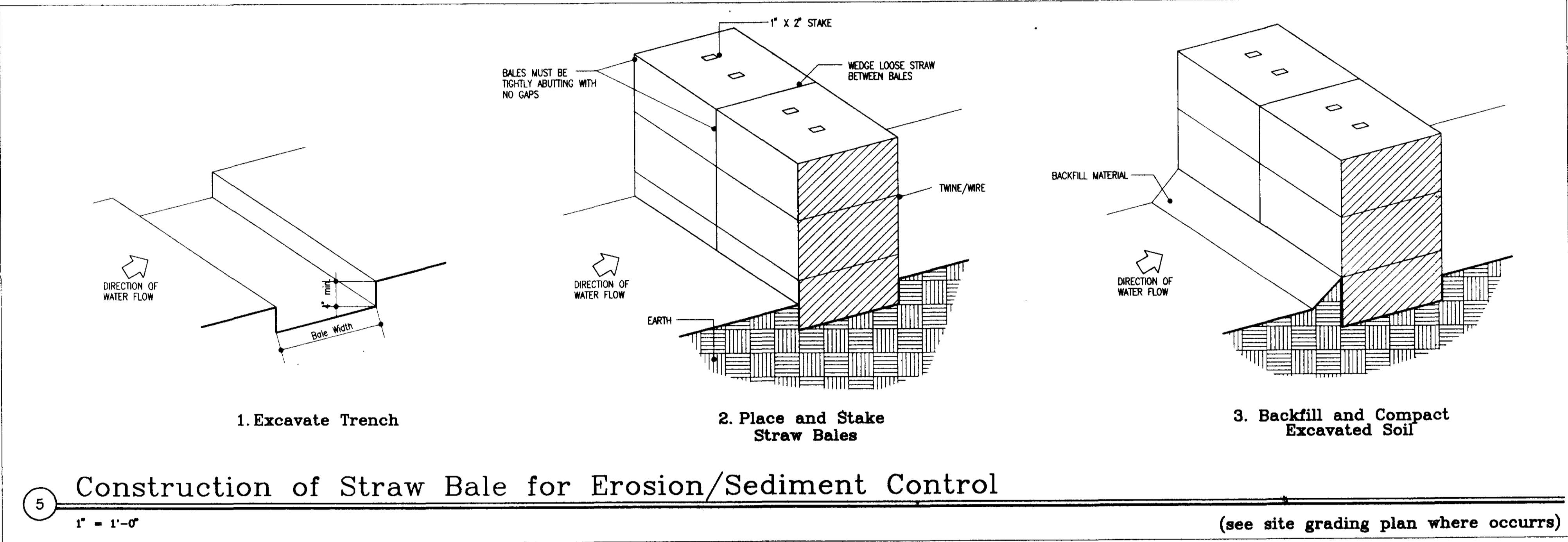
7 Construction Egress Detail

Not To Scale



Detail for Attaching two Silt Fences

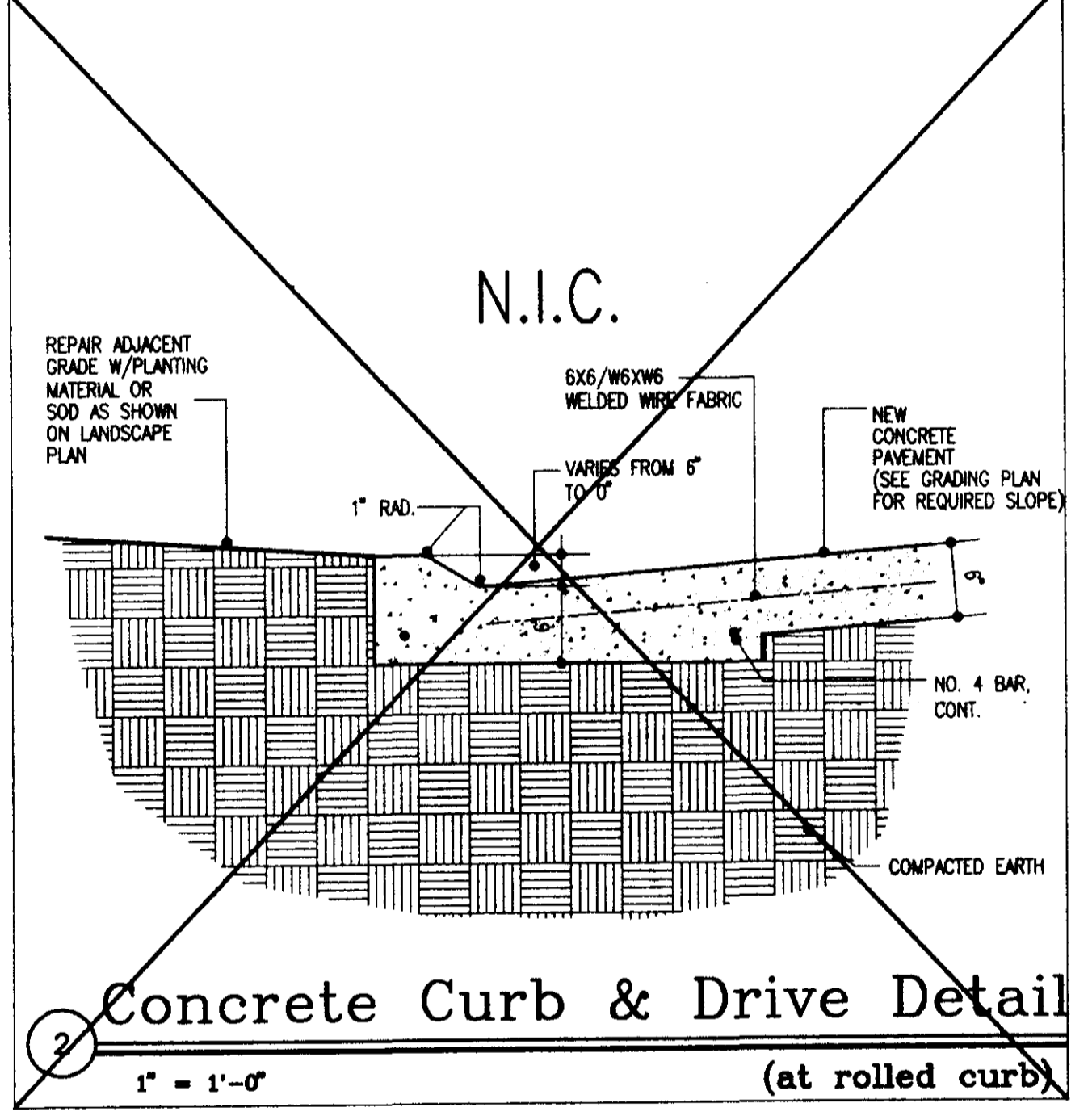
Not To Scale



5 Construction of Straw Bale for Erosion/Sediment Control

1" = 1'-0"

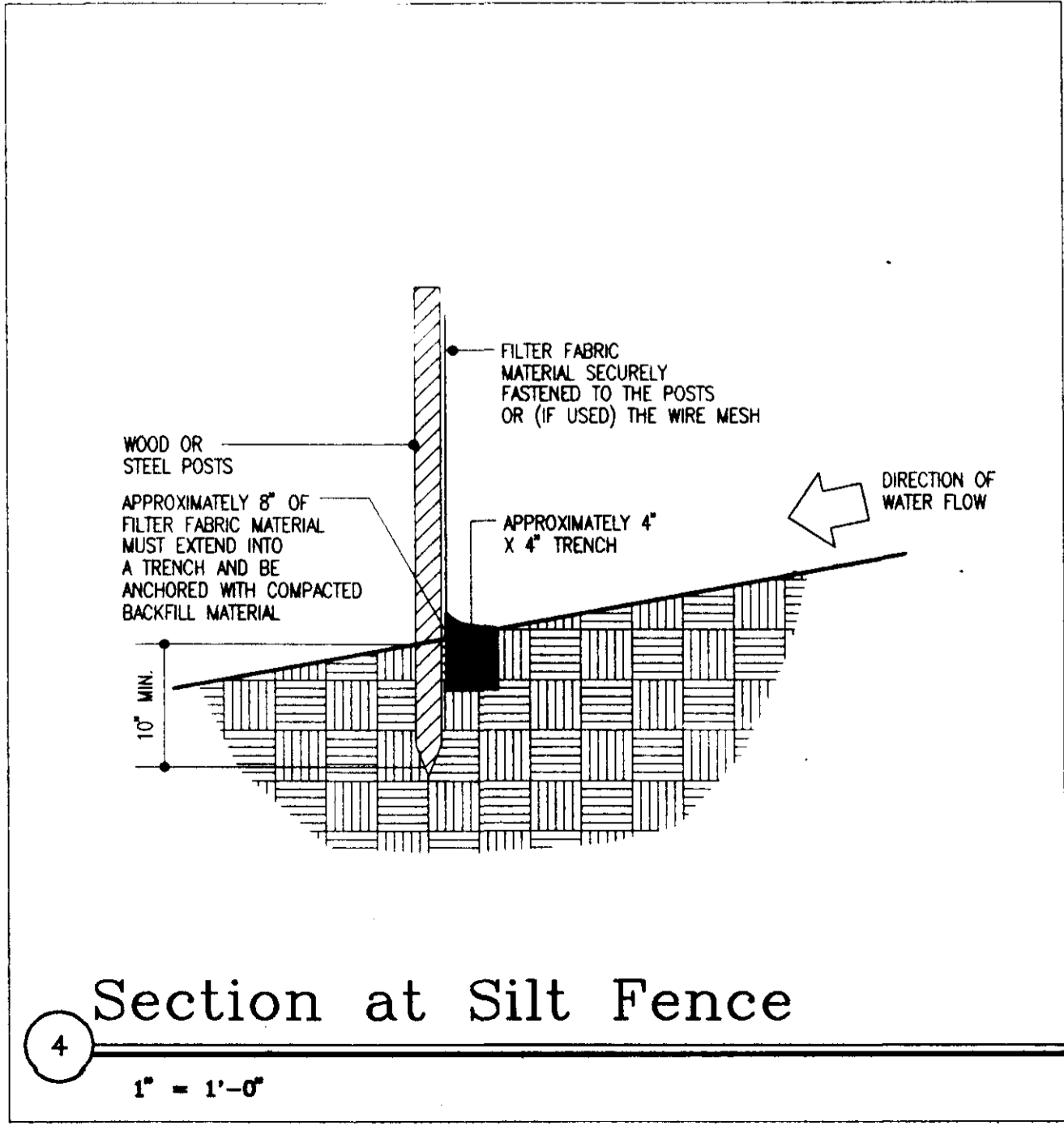
(see site grading plan where occurs)



2 Concrete Curb & Drive Detail

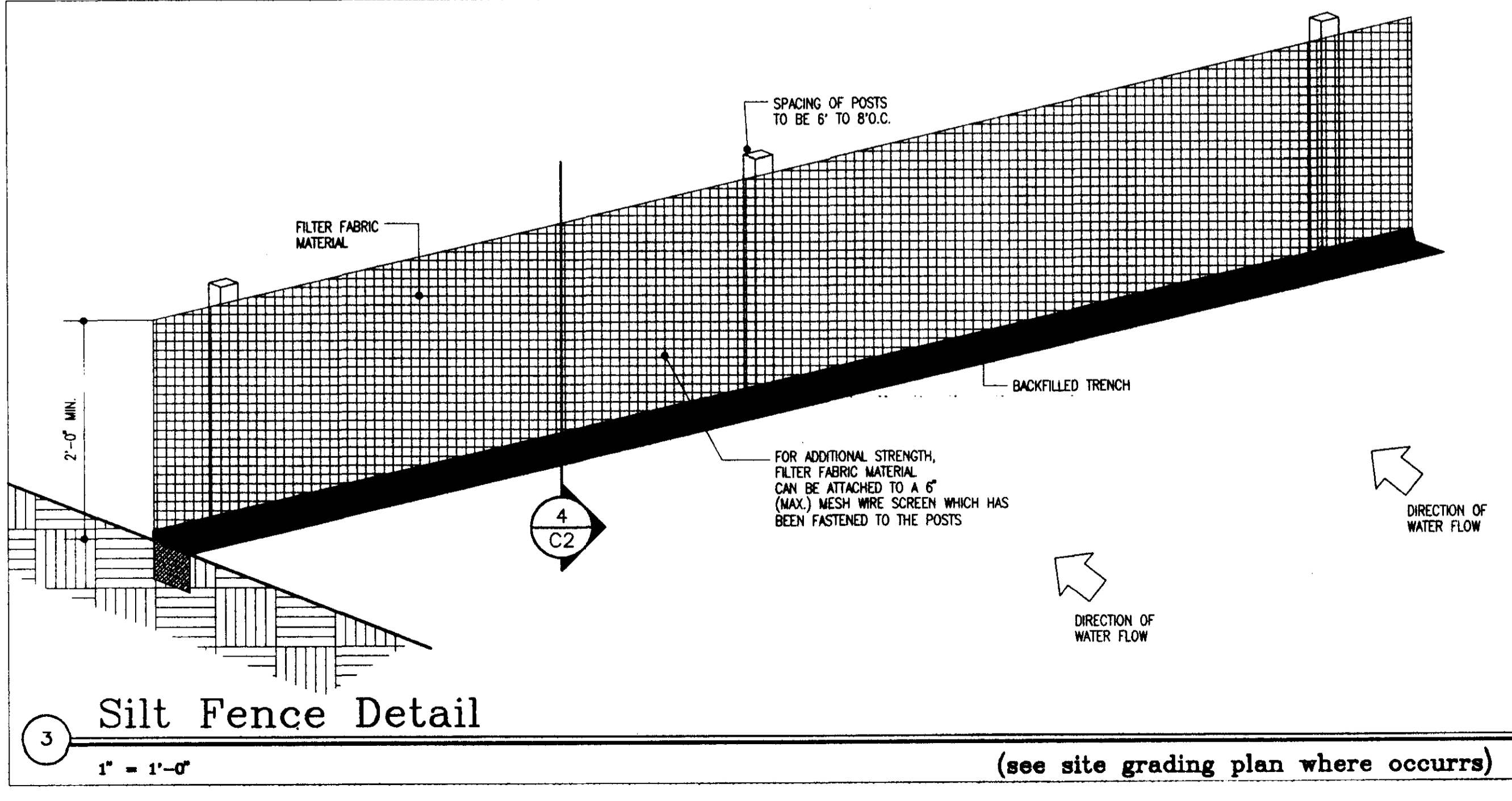
1" = 1'-0"

(at rolled curb)



4 Section at Silt Fence

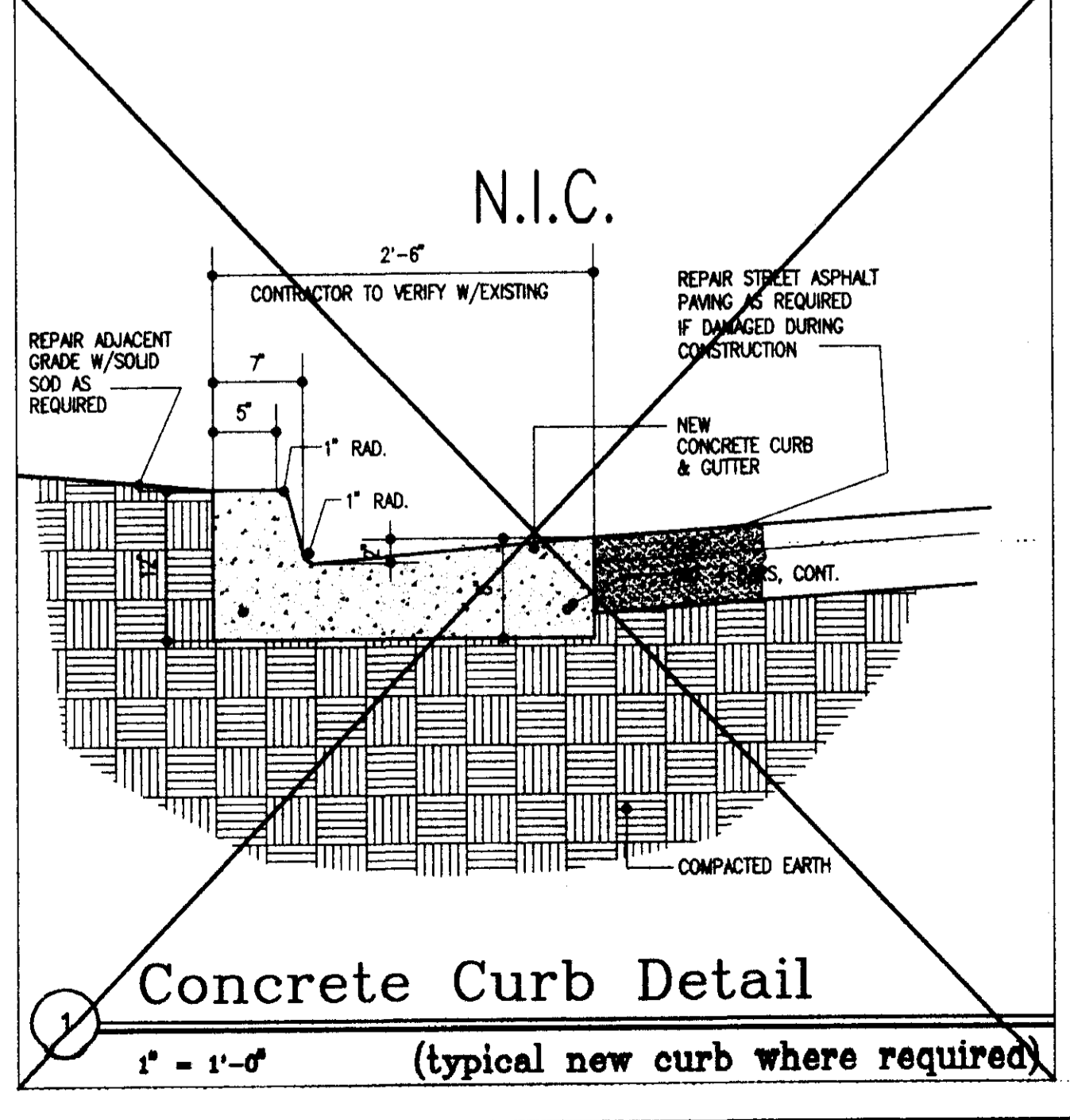
1" = 1'-0"



3 Silt Fence Detail

1" = 1'-0"

(see site grading plan where occurs)



1 Concrete Curb Detail

1" = 1'-0"

(typical new curb where required)

NO.	REVISION	DATE

General Notes:

The details shown on this sheet represent the minimum requirements for the installation and maintenance of erosion and sediment control measures.

Silt Fence Maintenance Notes:

- Care shall be taken to minimize the movement of sediment into all storm drain apertures and public streets until the impervious material (road/parking area surface) is applied.
- A drop inlet sediment trap with perimeter silt fencing or properly installed hydrologic barriers is the recommended method of silt protection. Sediment will be removed from the excavated drop inlet sediment trap and restored to the original depth when accumulation has reached half the depth of the trap.
- Sediment will be removed from the upstream face of the silt fence when it reaches a maximum 6" (six inches) depth at the fence. The fence will be replaced as necessary to maintain a barrier.

COOKE DOUGLASS FARR LEMONS/LTD
ARCHITECTS & ENGINEERS

CDFL

8700 INTERNATIONAL 65 NORTH/LAKEVIEW, MO 63011/(801)888-8110

PROJECT: City of Ridgeland Tennis Center

Ridgeland, Mississippi

EROSION AND SEDIMENT CONTROL DETAILS

PROJECT NO. 95022

DATE 7-97

DRAWN WILLIAMS

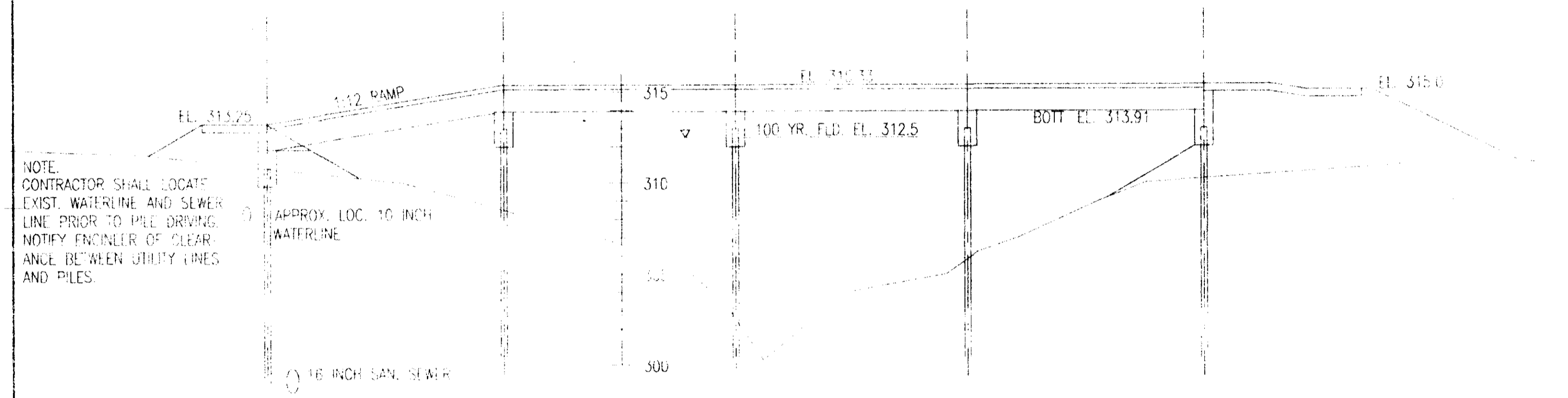
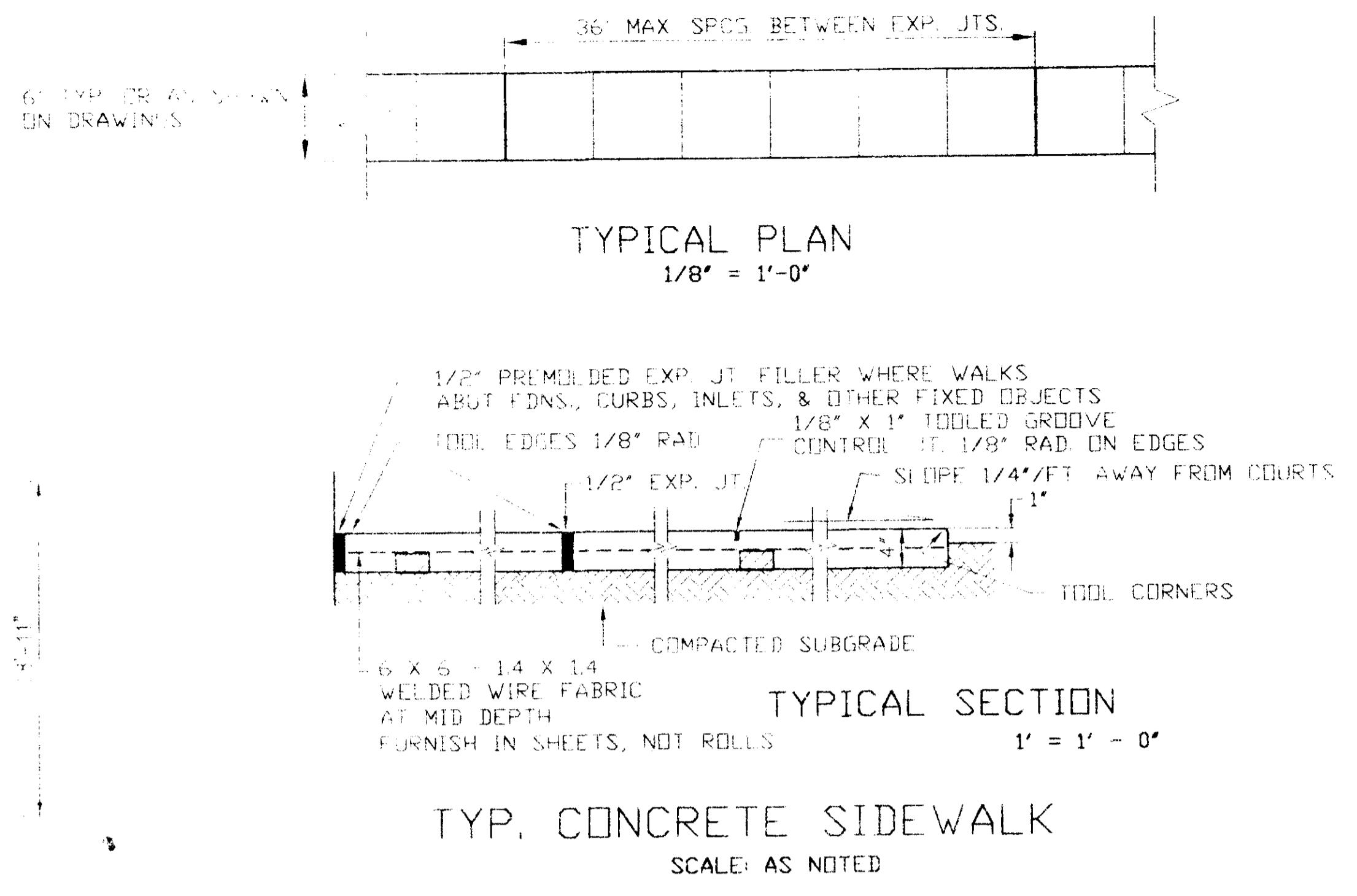
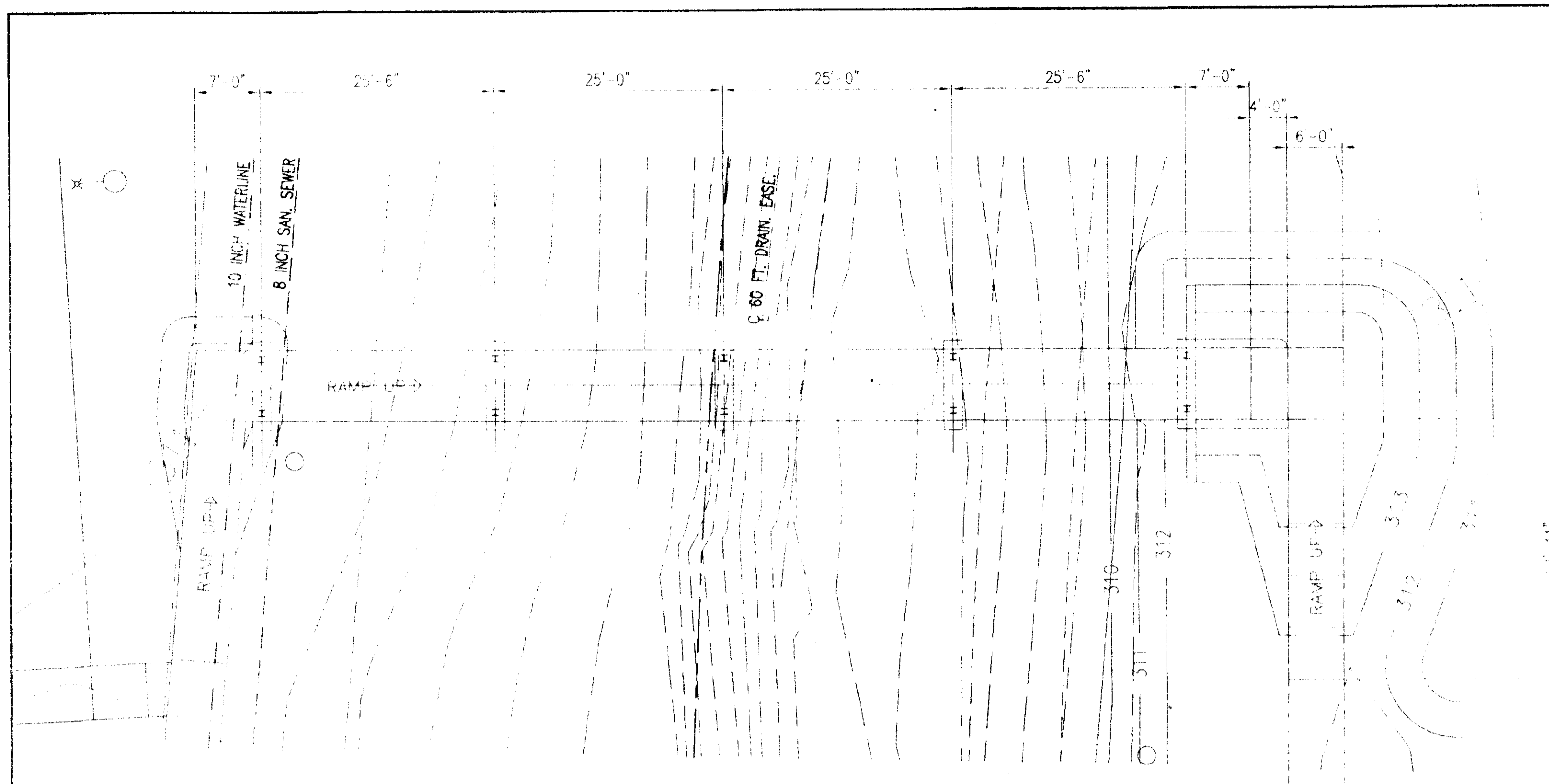
CHECKED COOKE

PROJECT NUMBER C 11

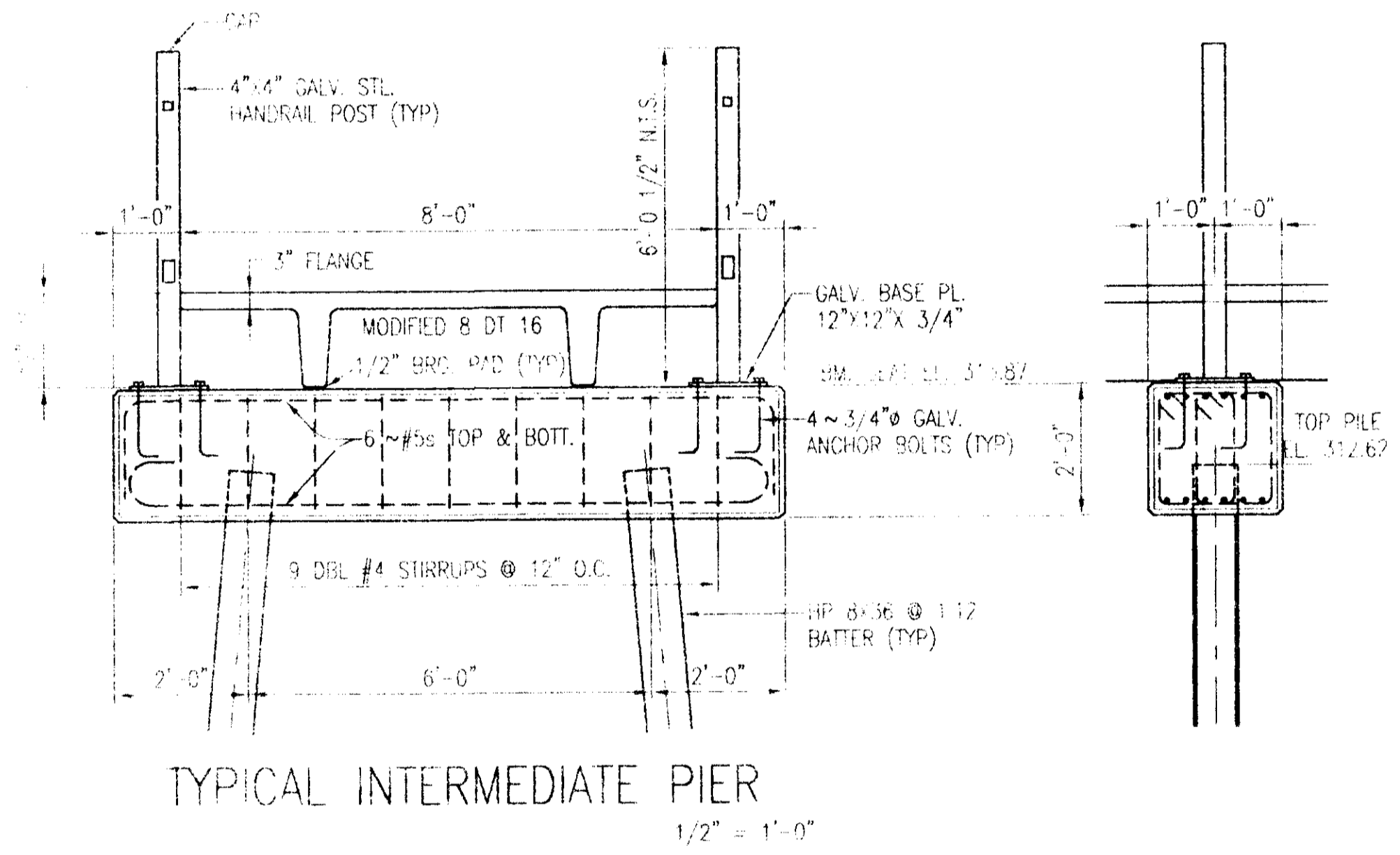
NO.	REVISION	DATE
1	ADDED SIDEWALK DETAIL	01/98
1	CHANGED DRAWING SHEET NUMBER	01/98

PILE NOTES:
 PILES SHALL BE DRIVEN TO 20 TON BRG. CAPACITY.
 ESTIMATED PENETRATION IS 30 FT.

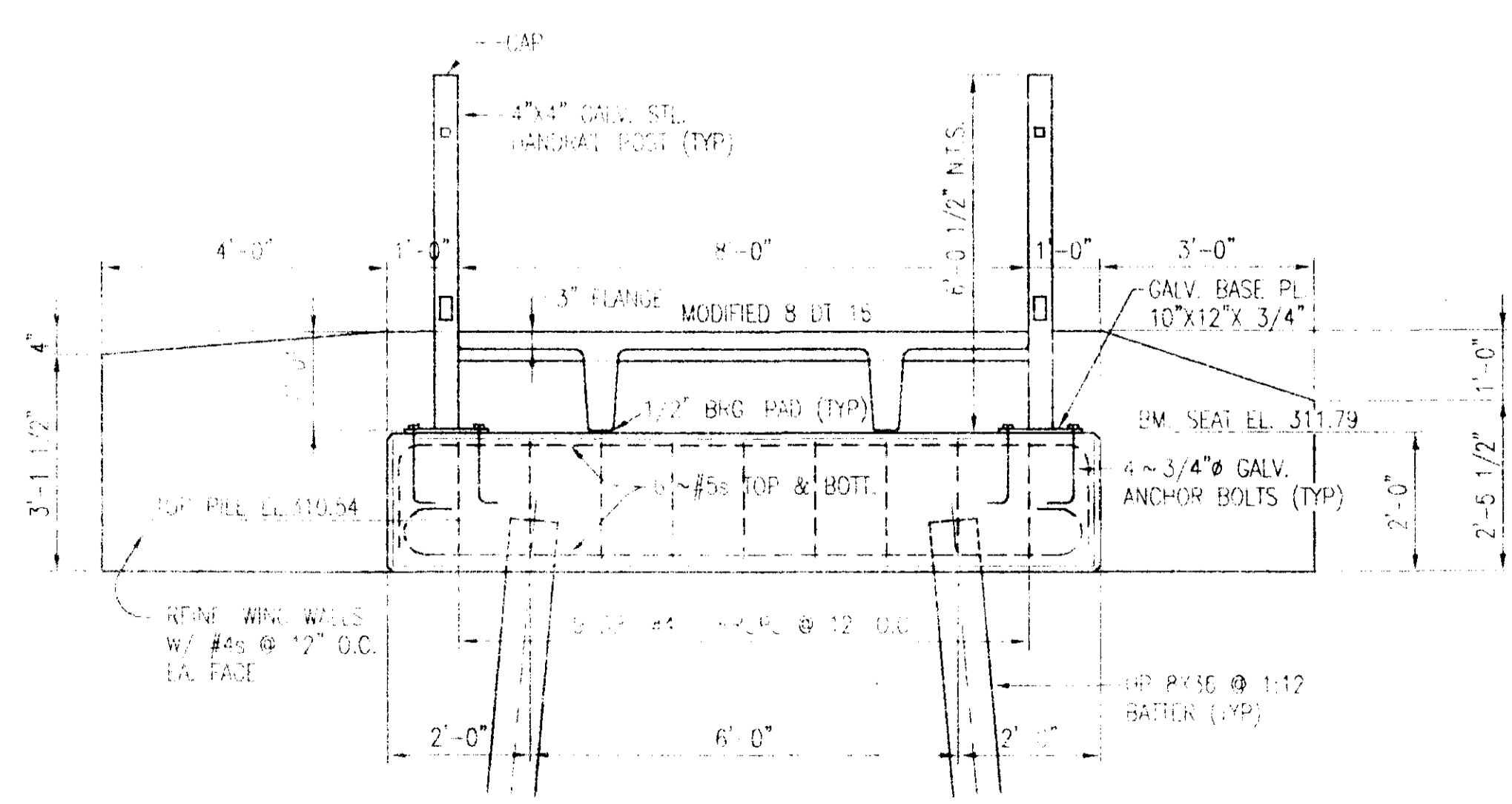
DOUBLE TEE NOTE:
 SEE DETAIL "B" SH. C-4 FOR EMBEDDED ANGLE TO BE INCLUDED AT MIDPOINT OF EACH FLANGE EDGE.



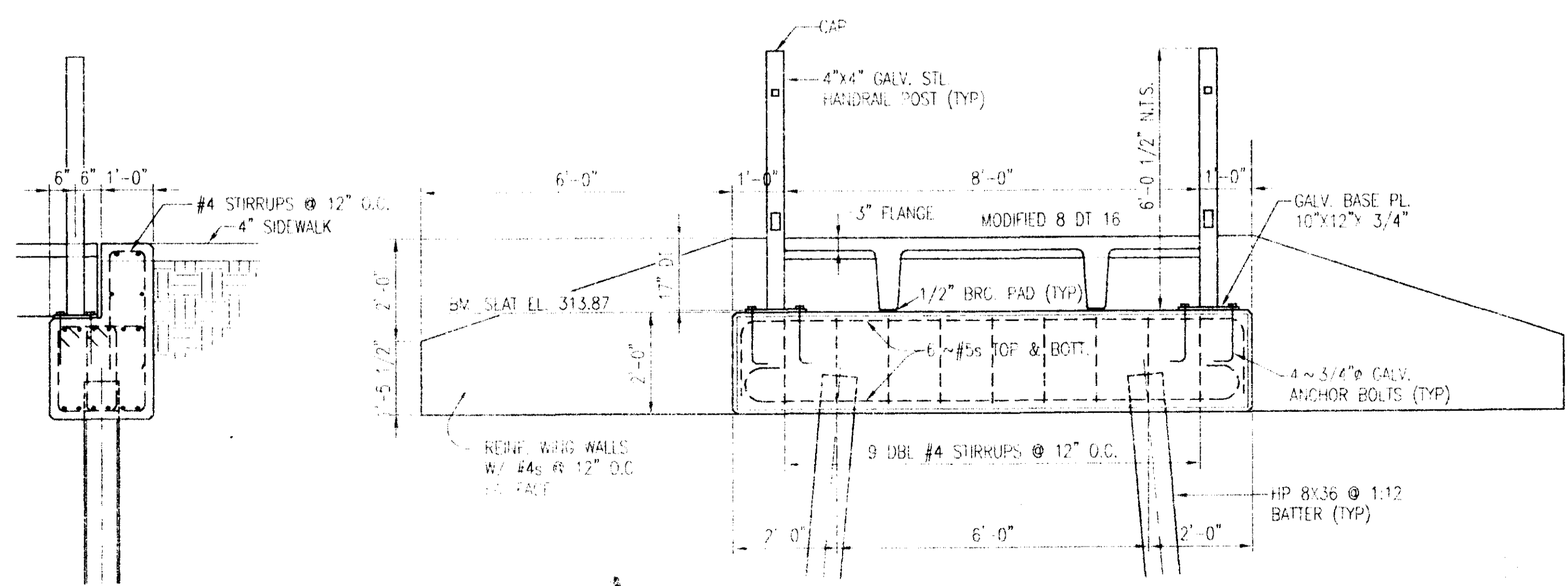
BRIDGE PLAN AND ELEVATION
 (HANDRAIL NOT SHOWN)
 HORIZ. 1" = 10'-0"
 VERT. 1" = 5'-0"



TYPICAL INTERMEDIATE PIER
 1/2" = 1'-0"



NORTH ABUTMENT
 1/2" = 1'-0"



SOUTH ABUTMENT
 1/2" = 1'-0"

COOKE DOUGLASS FARR LEMONS/LTD.
 ARCHITECTS & ENGINEERS

CDFL

3780 INTERSTATE 55 NORTH/JACKSON, MS 39211/(601)368-3110

PROJECT

**City of Ridgeland
 Tennis Center**

BRIDGE OVER BEAVER CREEK
 Ridgeland, MS

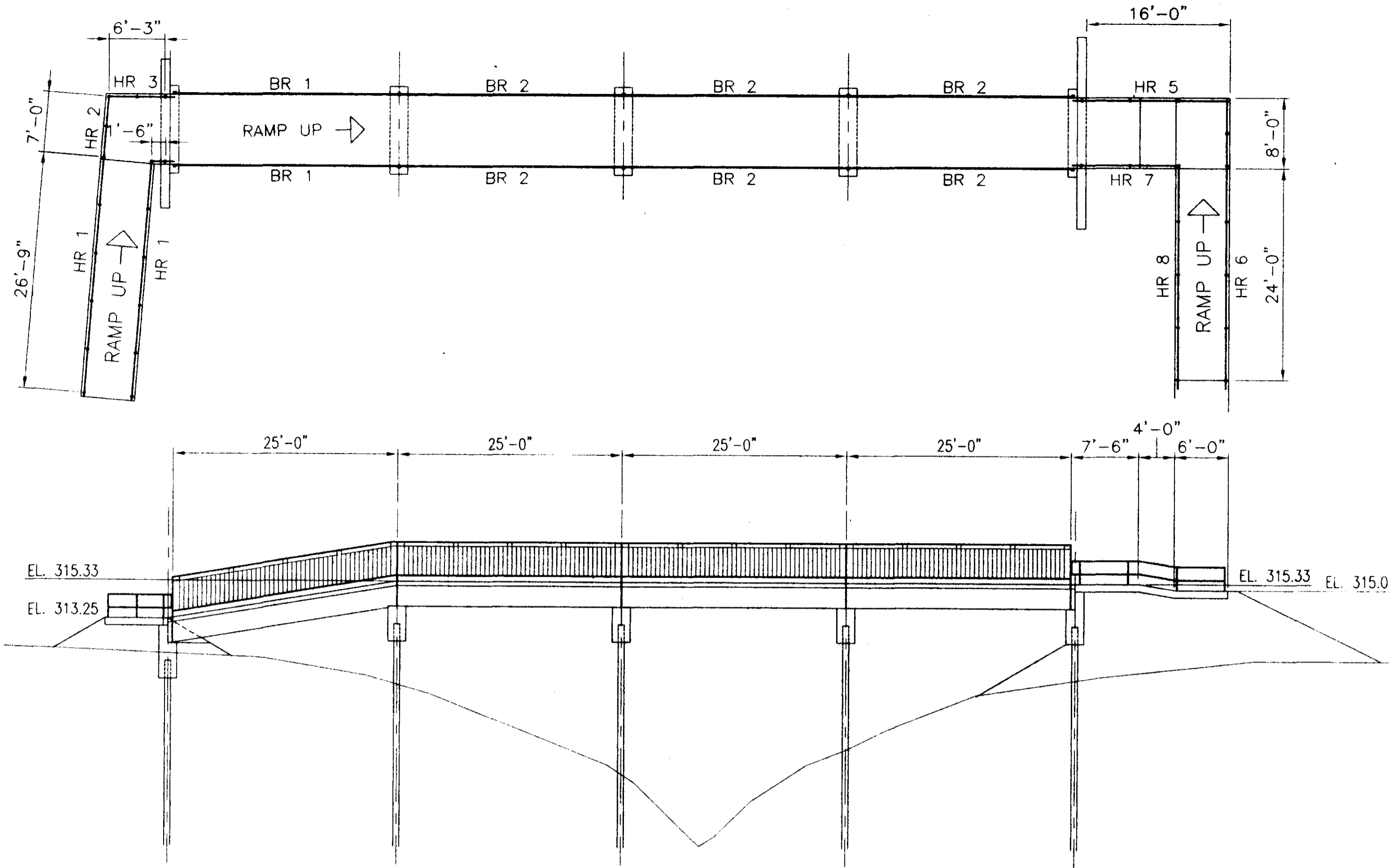
SHEET TITLE

**BRIDGE PLAN AND ELEVATION
 SECTIONS AND DETAILS**

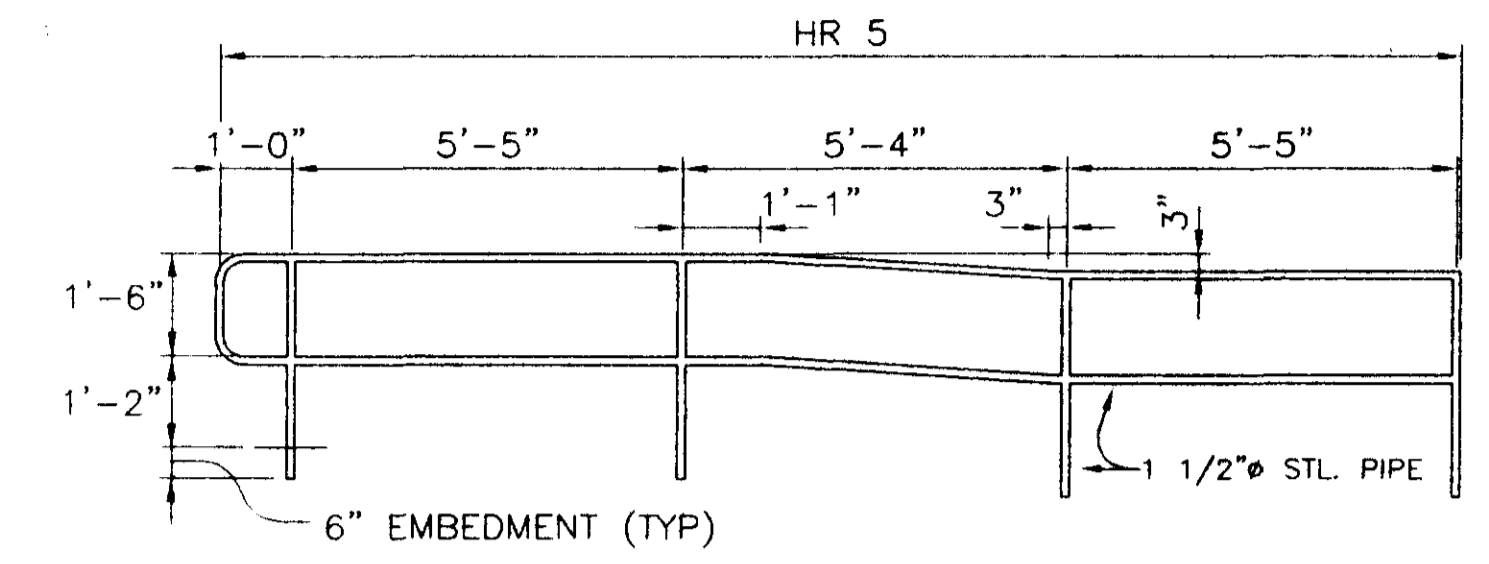
	PROJECT NO. 97-220	SHEET NUMBER
	DATE 01/98	C-2
	DRAWN WILLIAMS	
	CHECKED COOKE	

NO.	REVISION	DATE
1	CHANGED DRAWING SHEET NO.	01/98

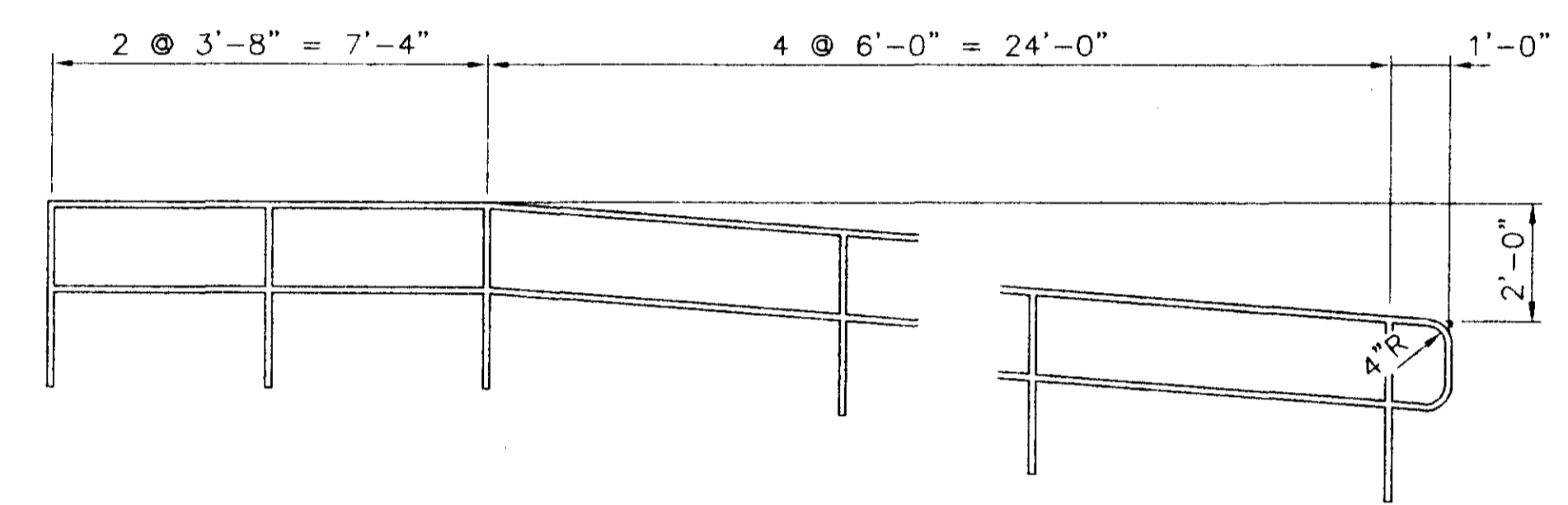
NOTE:
HANDRAILS AND BRIDGERAILS SHALL BE WELDED CONSTRUCTION AND HOT-DIPPED GALVANIZED AFTER FABRICATION. WELDS SHALL BE GROUND SMOOTH.



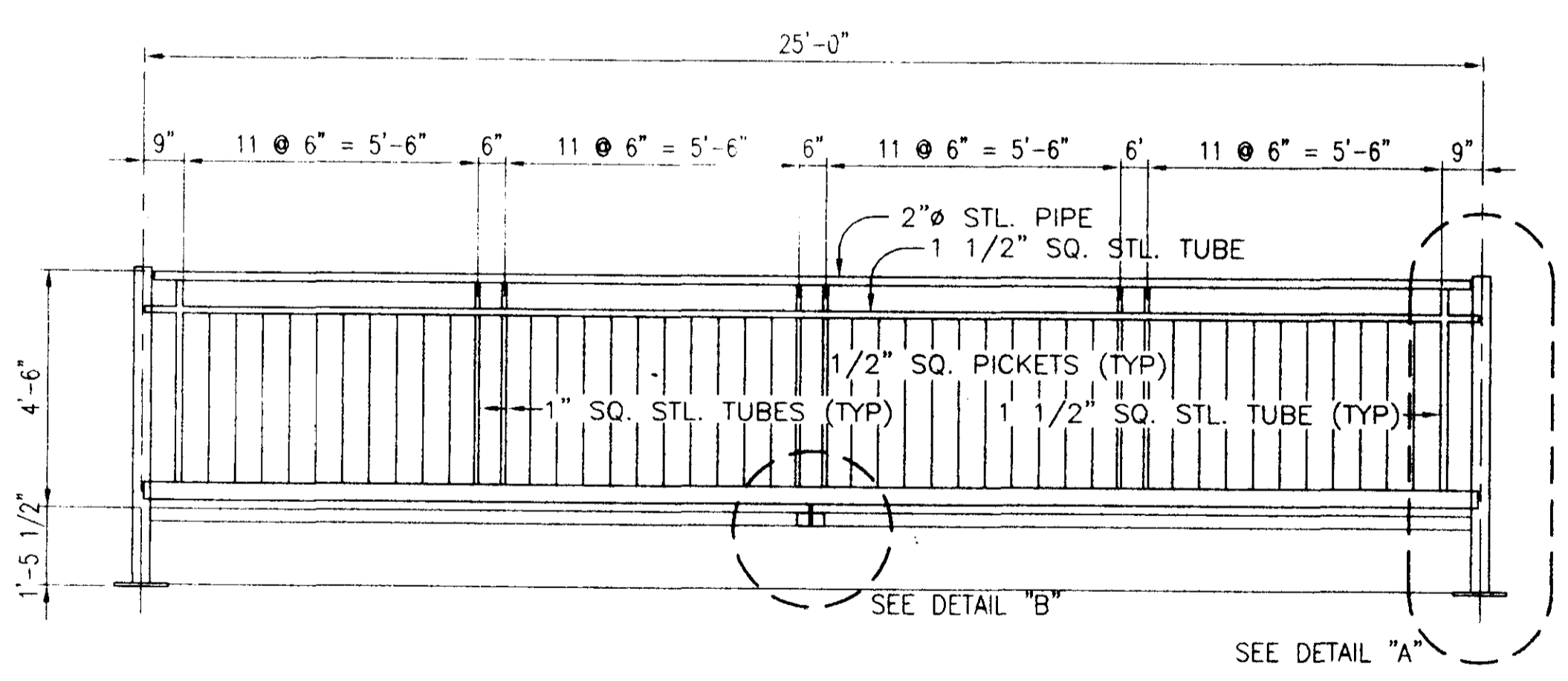
BRIDGE PLAN AND ELEVATION
 HORIZ. 1" = 10'-0"
 VERT. 1" = 5'-0"



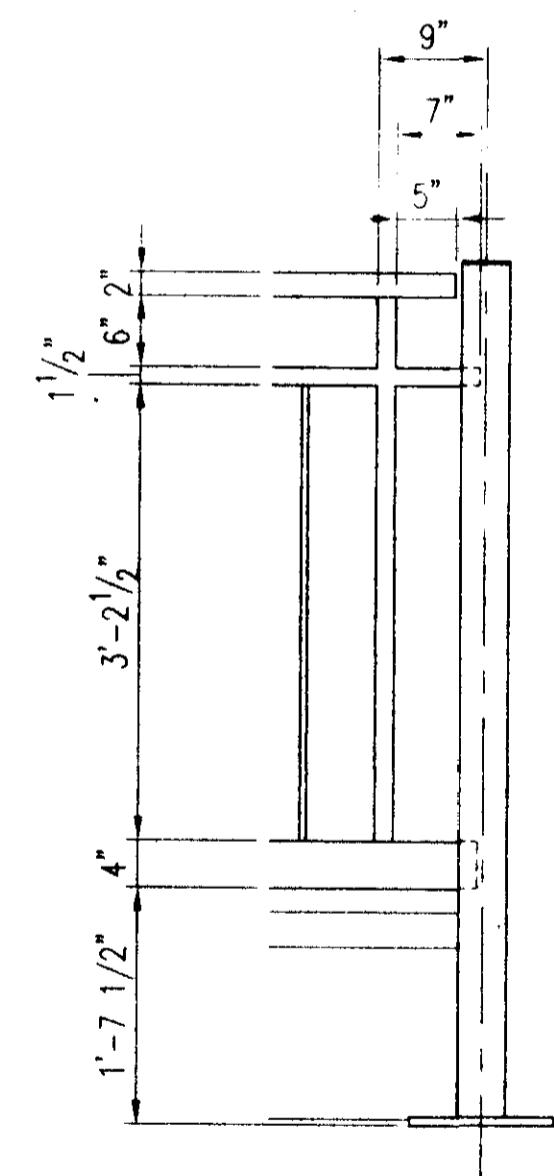
HANDRAIL DETAIL - HR 5
 OTHER HANDRAILS SIMILAR SCALE: 3/8" = 1'-0"



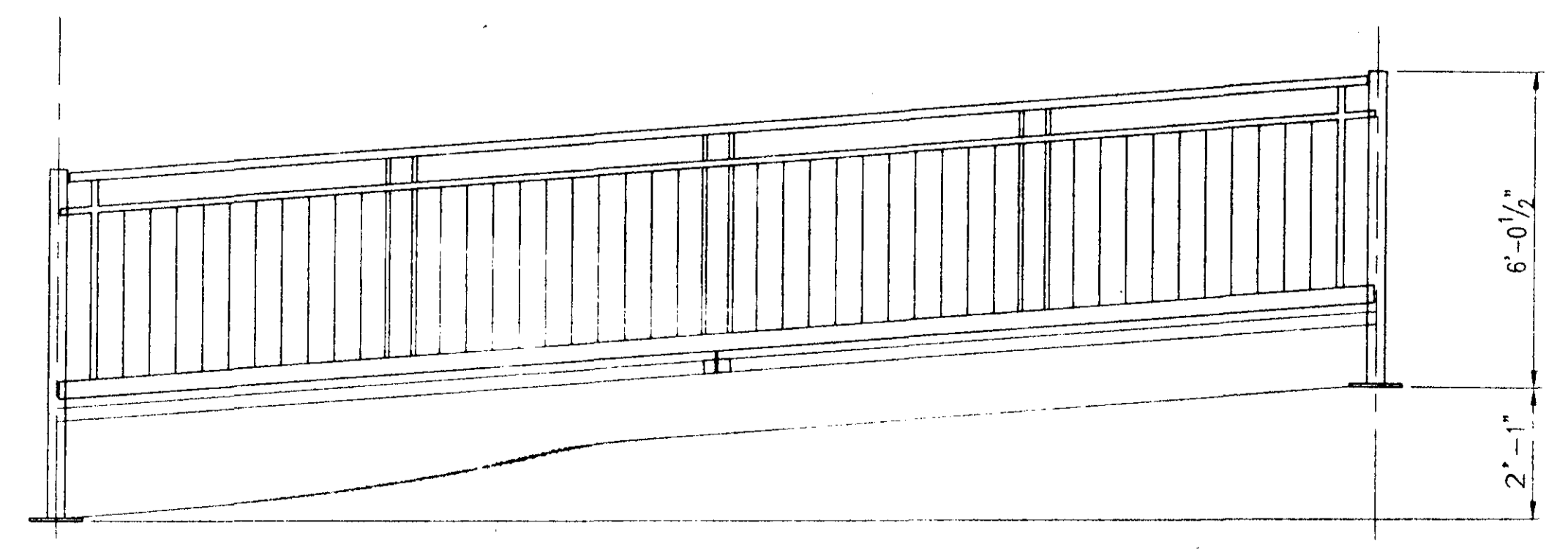
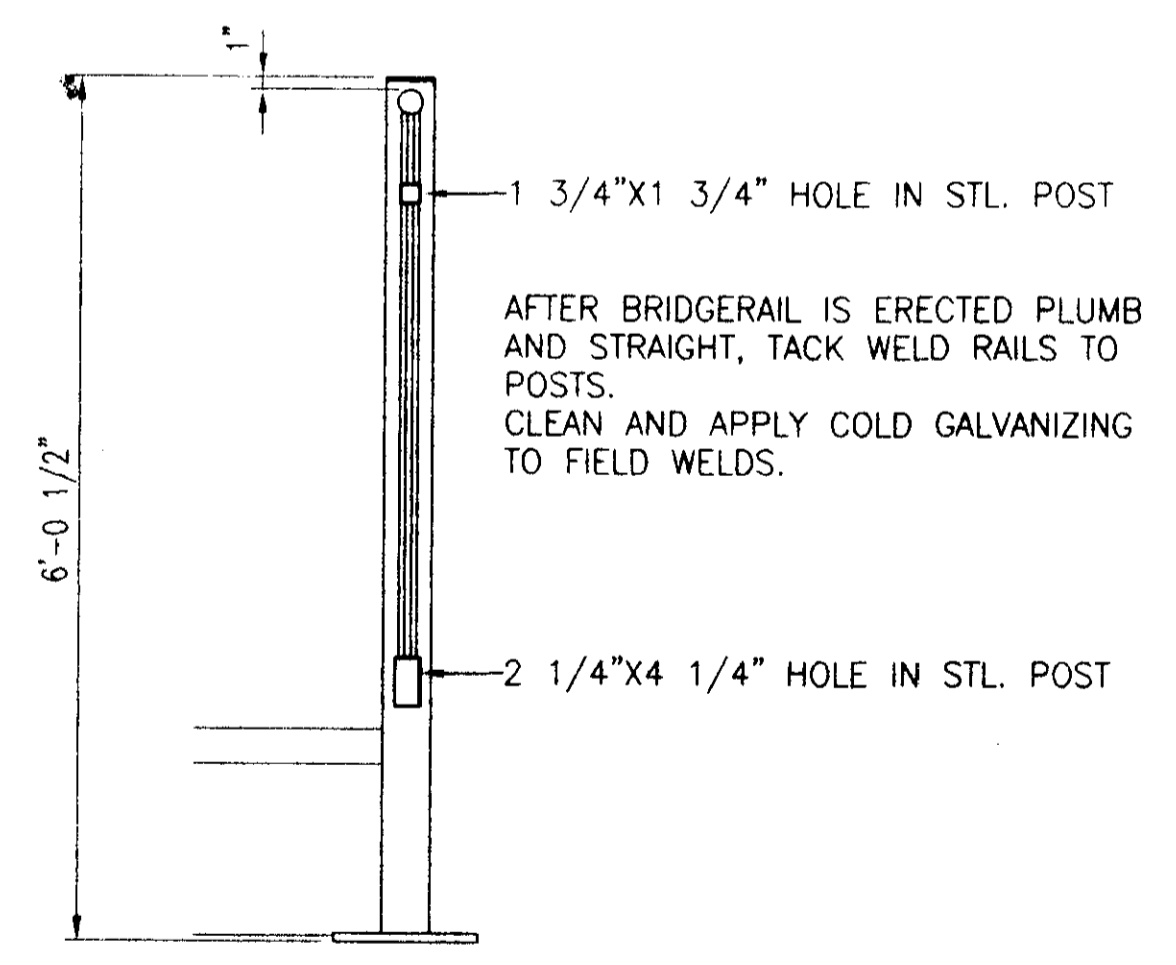
HANDRAIL DETAIL - HR 6
 OTHER HANDRAILS SIMILAR SCALE: 3/8" = 1'-0"



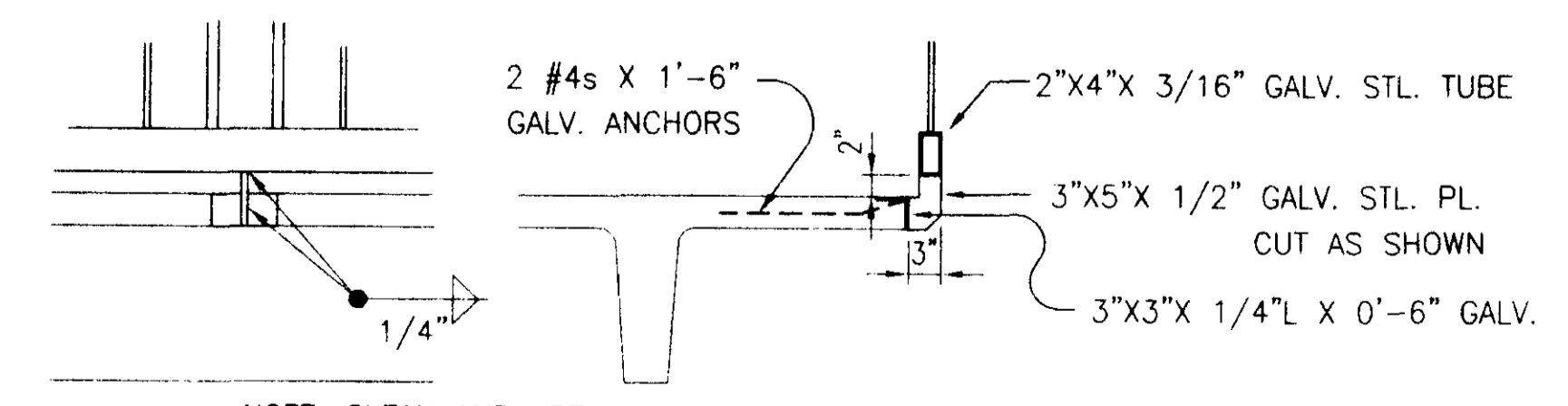
BR-2
 SCALE: 3/8" = 1'-0"



DETAIL "A" SCALE: 3/4" = 1'-0"



BR-1
 SCALE: 3/8" = 1'-0"



NOTE: CLEAN AND APPLY COLD GALVANIZING COATING TO FIELD WELDS.

DETAIL "B" SCALE: 3/4" = 1'-0"

COOKE DOUGLASS FARR LEMONS/LTD
 ARCHITECTS & ENGINEERS
 CDFL
 9700 INTERNATIONAL 65 WOODS/LAKEMORE, MS 38611/(601)886-8110

CITY OF RIDGELAND
TENNIS CENTER
BRIDGE OVER BEAVER CREEK
 RIDGELAND, MISSISSIPPI

BRIDGE AND RAMP
HANDRAIL DETAILS

	PROJECT NO.	97-220	C-3
	DATE	10/98	
	DRAWN	WILLIAMS	
	CHECKED	COOKE	
	SCALE		