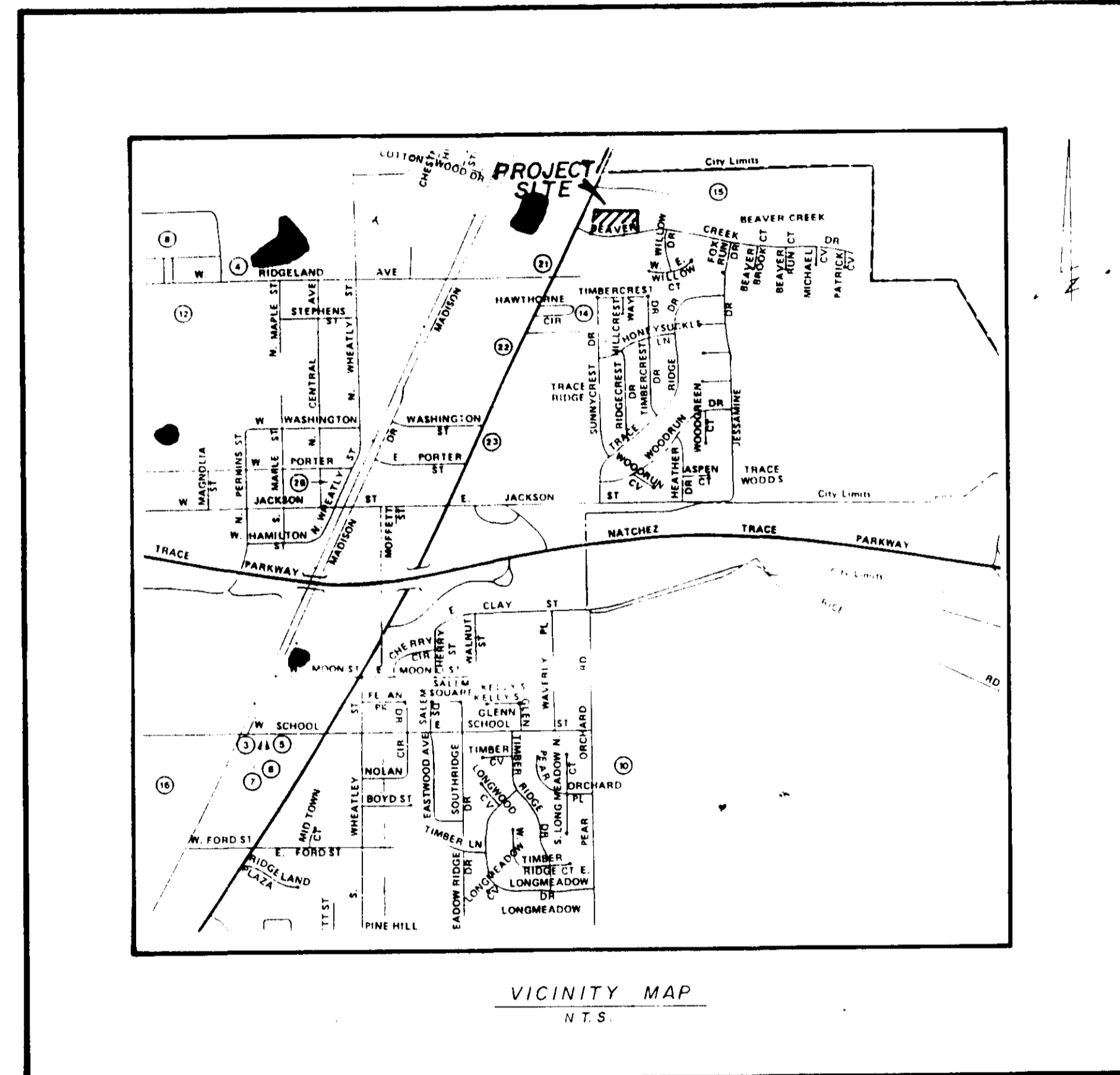


CONSTRUCTION DRAWINGS FOR  
**UTILITY EXTENSION - BEAVER CREEK DRIVE**  
 CITY OF RIDGELAND, MADISON COUNTY, MISSISSIPPI.



INDEX OF DRAWINGS

SHT. NO.	DESCRIPTION
1	COVER SHEET
2	SITE PLAN
3	PROFILE
4	STANDARD SANITARY SEWER CONSTRUCTION DETAILS.

DEVELOPED BY : GARY J. HARKINS

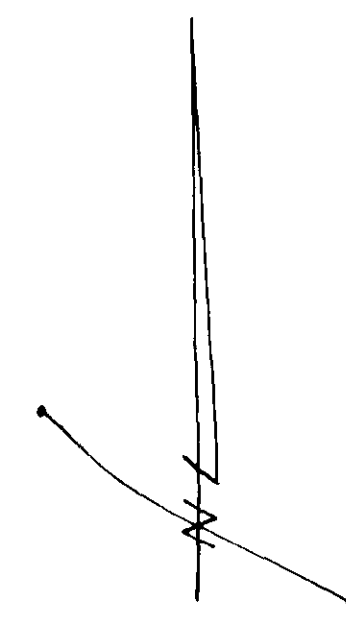
4 RIVER BEND PLACE  
 FLOWOOD , MS

THIS DRAWING CORRECTED  
 AS BUILT  
 DATE 3/13/91  
 SIGNED *[Signature]*

DESIGNED BY : CENTRAL MISSISSIPPI ENGINEERING , INC.  
 5 LAKELAND CIRCLE  
 JACKSON , MISSISSIPPI 39216

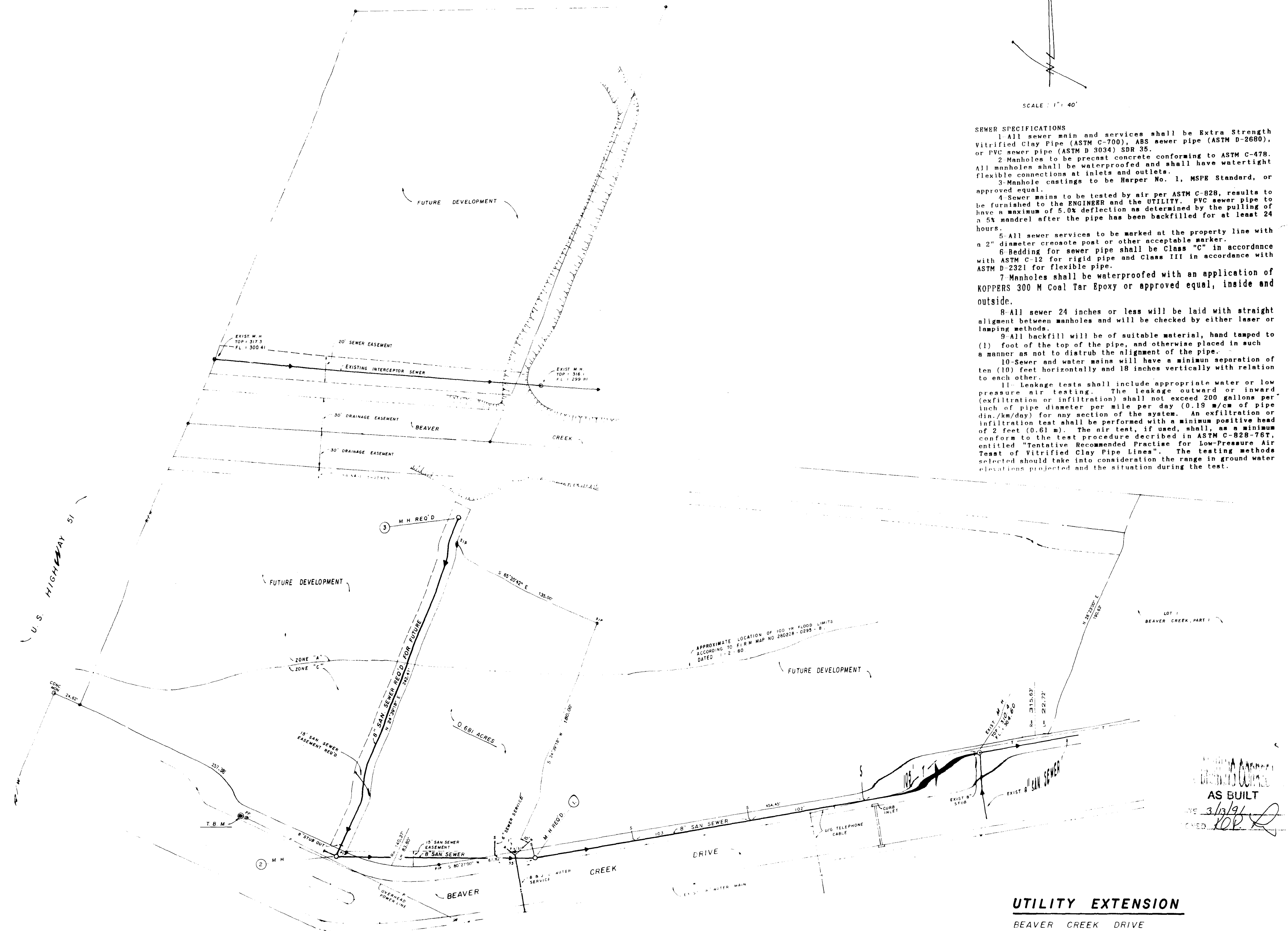
JANUARY 1991

**PWP-00201**



SCALE: 1" = 40'

- SEWER SPECIFICATIONS**
- 1- All sewer main and services shall be Extra Strength Vitrified Clay Pipe (ASTM C-700), ABS sewer pipe (ASTM D-2680), or PVC sewer pipe (ASTM D 3034) SDR 35.
  - 2- Manholes to be precast concrete conforming to ASTM C-478. All manholes shall be waterproofed and shall have watertight flexible connections at inlets and outlets.
  - 3- Manhole castings to be Harper No. 1, MSPR Standard, or approved equal.
  - 4- Sewer mains to be tested by air per ASTM C-828, results to be furnished to the ENGINEER and the UTILITY. PVC sewer pipe to have a maximum of 5.0% deflection as determined by the pulling of a 5% mandrel after the pipe has been backfilled for at least 24 hours.
  - 5- All sewer services to be marked at the property line with a 2" diameter creosote post or other acceptable marker.
  - 6- Bedding for sewer pipe shall be Class "C" in accordance with ASTM C-12 for rigid pipe and Class III in accordance with ASTM D-2321 for flexible pipe.
  - 7- Manholes shall be waterproofed with an application of KOPPERS 300 M Coal Tar Epoxy or approved equal, inside and outside.
  - 8- All sewer 24 inches or less will be laid with straight alignment between manholes and will be checked by either laser or tamping methods.
  - 9- All backfill will be of suitable material, hand tamped to (1) foot of the top of the pipe, and otherwise placed in such a manner as not to disturb the alignment of the pipe.
  - 10- Sewer and water mains will have a minimum separation of ten (10) feet horizontally and 18 inches vertically with relation to each other.
  - 11- Leakage tests shall include appropriate water or low pressure air testing. The leakage outward or inward (exfiltration or infiltration) shall not exceed 200 gallons per inch of pipe diameter per mile per day (0.19 m<sup>3</sup>/cm of pipe dia./km/day) for any section of the system. An exfiltration or infiltration test shall be performed with a minimum positive head of 2 feet (0.61 m). The air test, if used, shall, as a minimum conform to the test procedure described in ASTM C-828-75T, entitled " Tentative Recommended Practice for Low-Pressure Air Test of Vitrified Clay Pipe Lines". The testing methods selected should take into consideration the range in ground water elevations projected and the situation during the test.



● T.B.M. ELEVATION: 316.38 NGVD  
 SPIKE IN POWER POLE WEST OF SOUTHWEST CORNER OF 0.681 ACRE PARCEL.

AS BUILT  
 DATE 3/13/91  
 DRAWN [Signature]

**UTILITY EXTENSION**  
 BEAVER CREEK DRIVE  
 CITY OF RIDGELAND, MADISON COUNTY, MISSISSIPPI

JANUARY 10, 1991  
 REV. 1 - 25 - 1991  
 REV. 3 - 12 - 1991

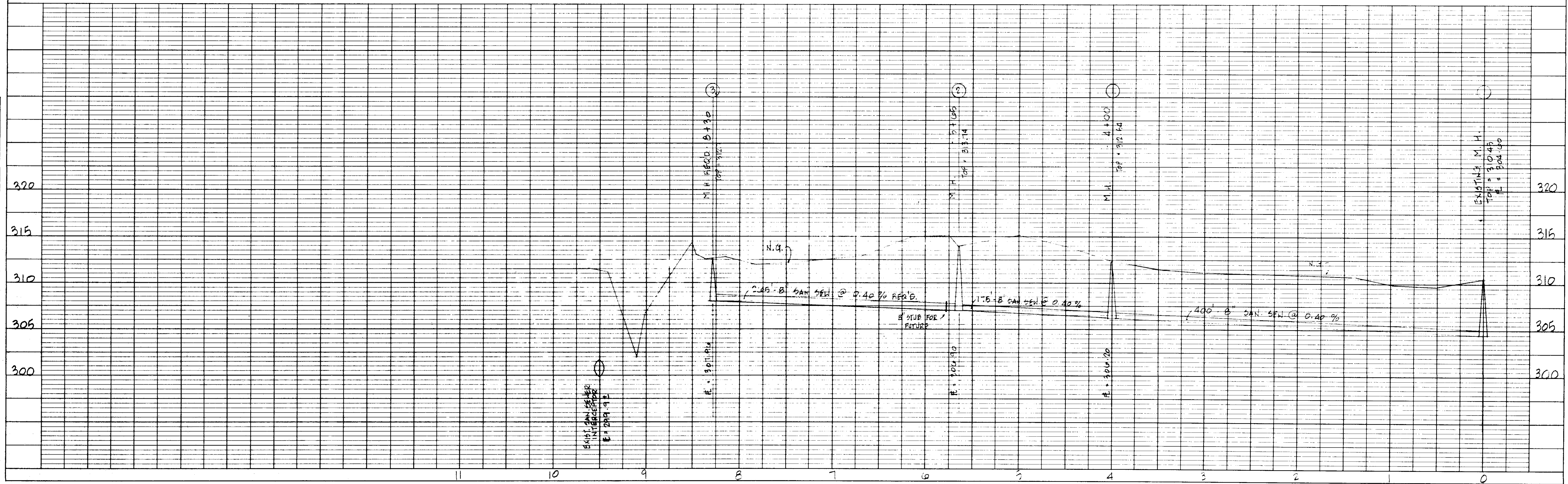
**CENTRAL MISSISSIPPI ENGINEERING**  
 P.O. BOX 4506 JACKSON, MS 39296-4506 601-366-6439

PLAN	SURVEYED	DATE
	NOTED	BY
NOTE BOOK	ALIGNED	
	CHANGED	
No.		

PROFILE	SURVEYED	DATE
	NOTED	BY
NOTE BOOK	ALIGNED	
	CHANGED	
No.		

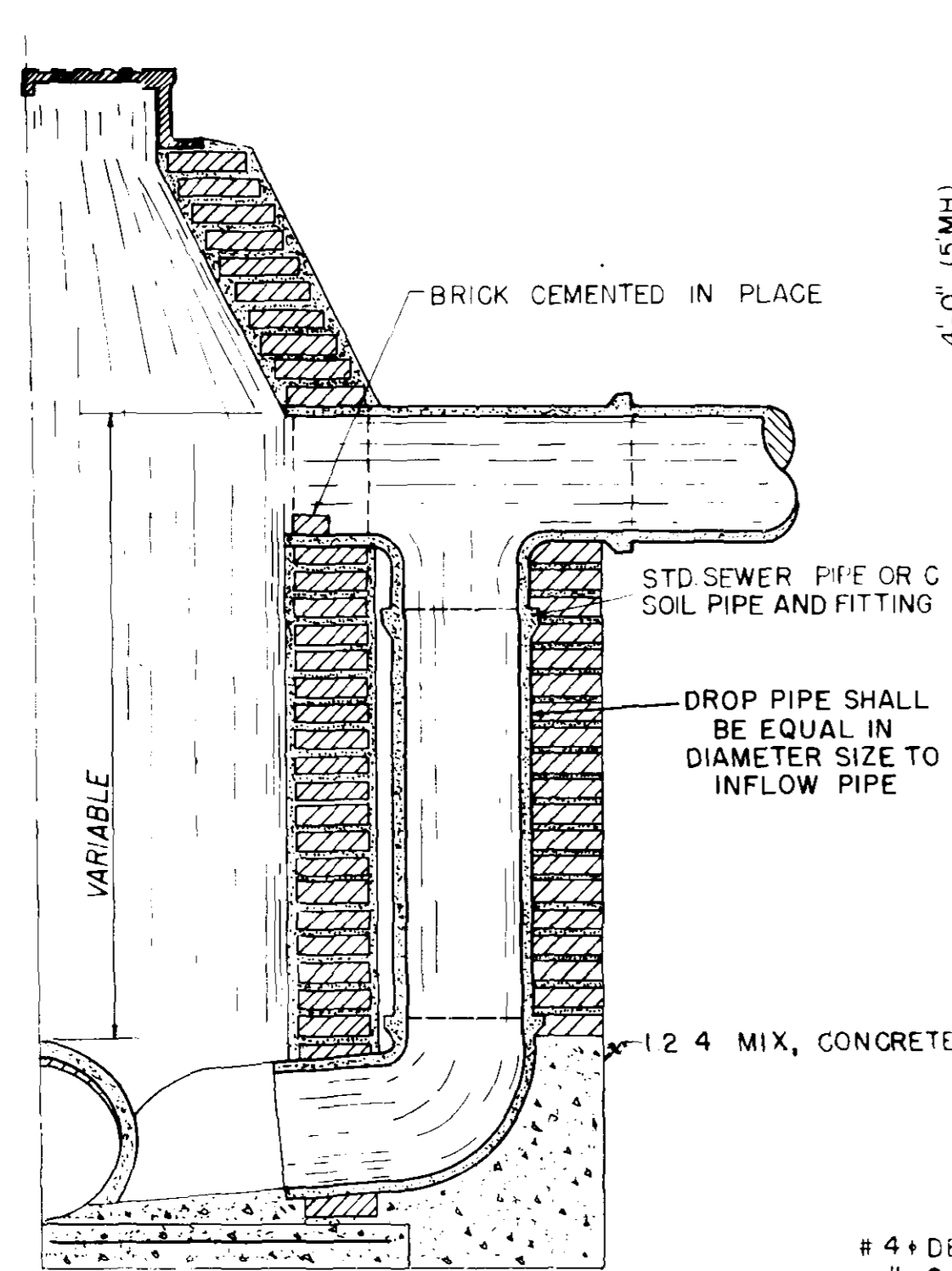
DRAWING CORRECTED  
**AS BUILT**  
 DATE 3/12/91  
 DRAWN BY [Signature]

SCALE : 1" = 50' (HORIZ.) / 1" = 3' (VERT.)

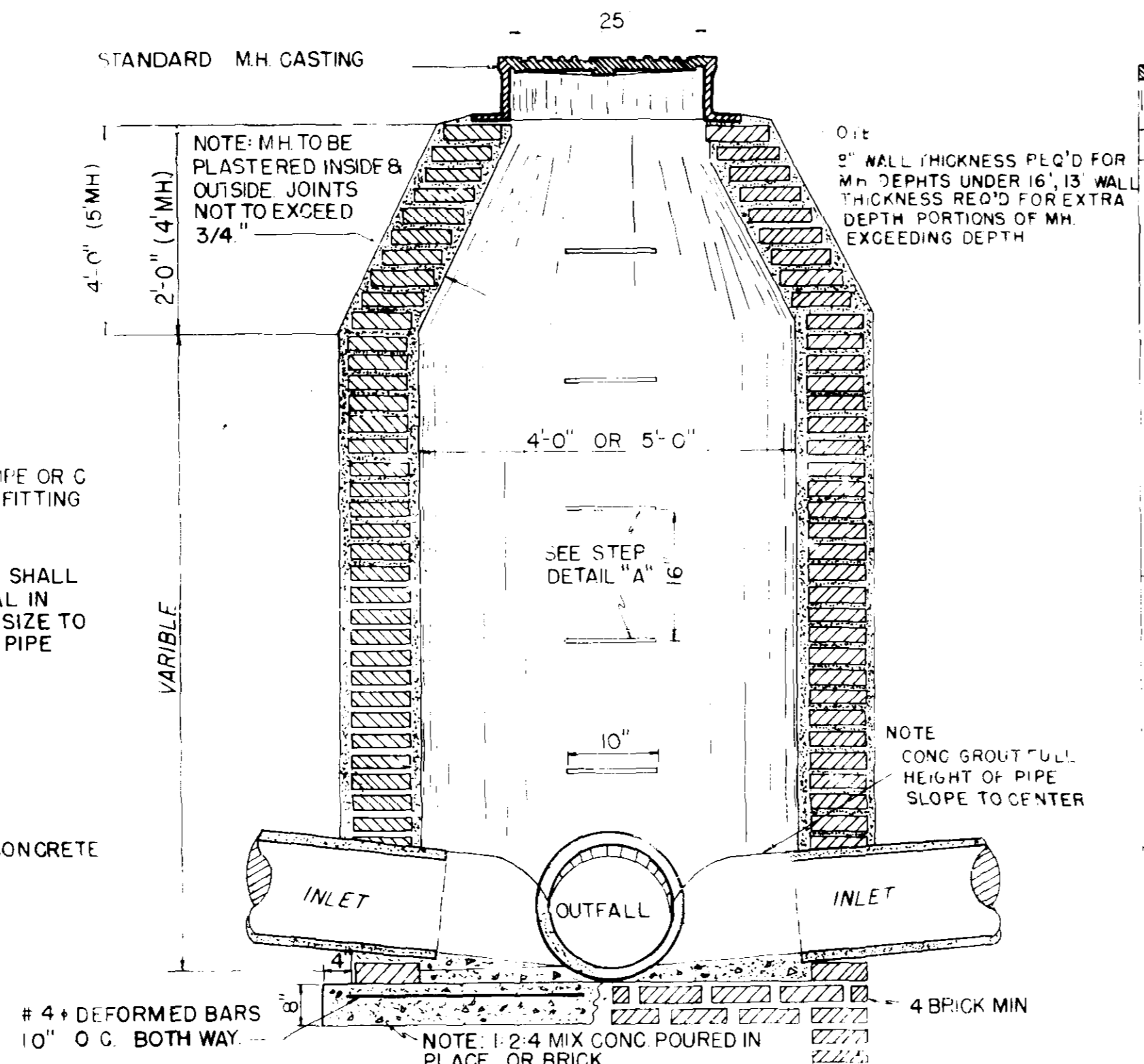


HIGHWAY FEDERAL AID SHEET  
 PLATE 1-SINGLE PLAN AND PROFILE-FULL LINE  
 TELETYPE  
 PRINTED IN U.S.A.

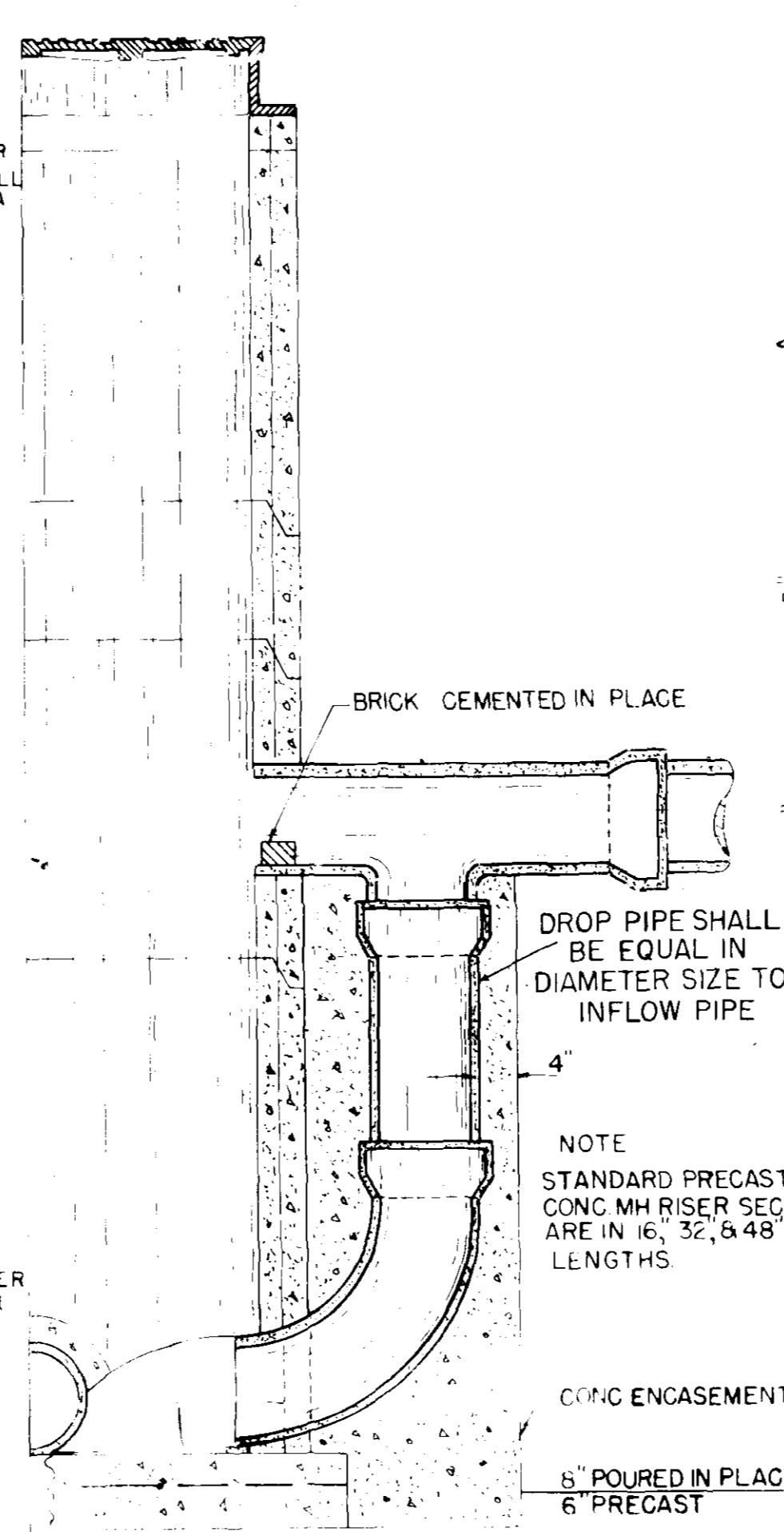
PROFILE - SANITARY SEWER EXTENSION  
 BEAVER CREEK DRIVE  
 CENTRAL MISSISSIPPI ENGINEERING, INC.  
 8 LAKELAND CIRCLE JACKSON, MS 39201  
 REV. 1-25-91  
 3 OF 4



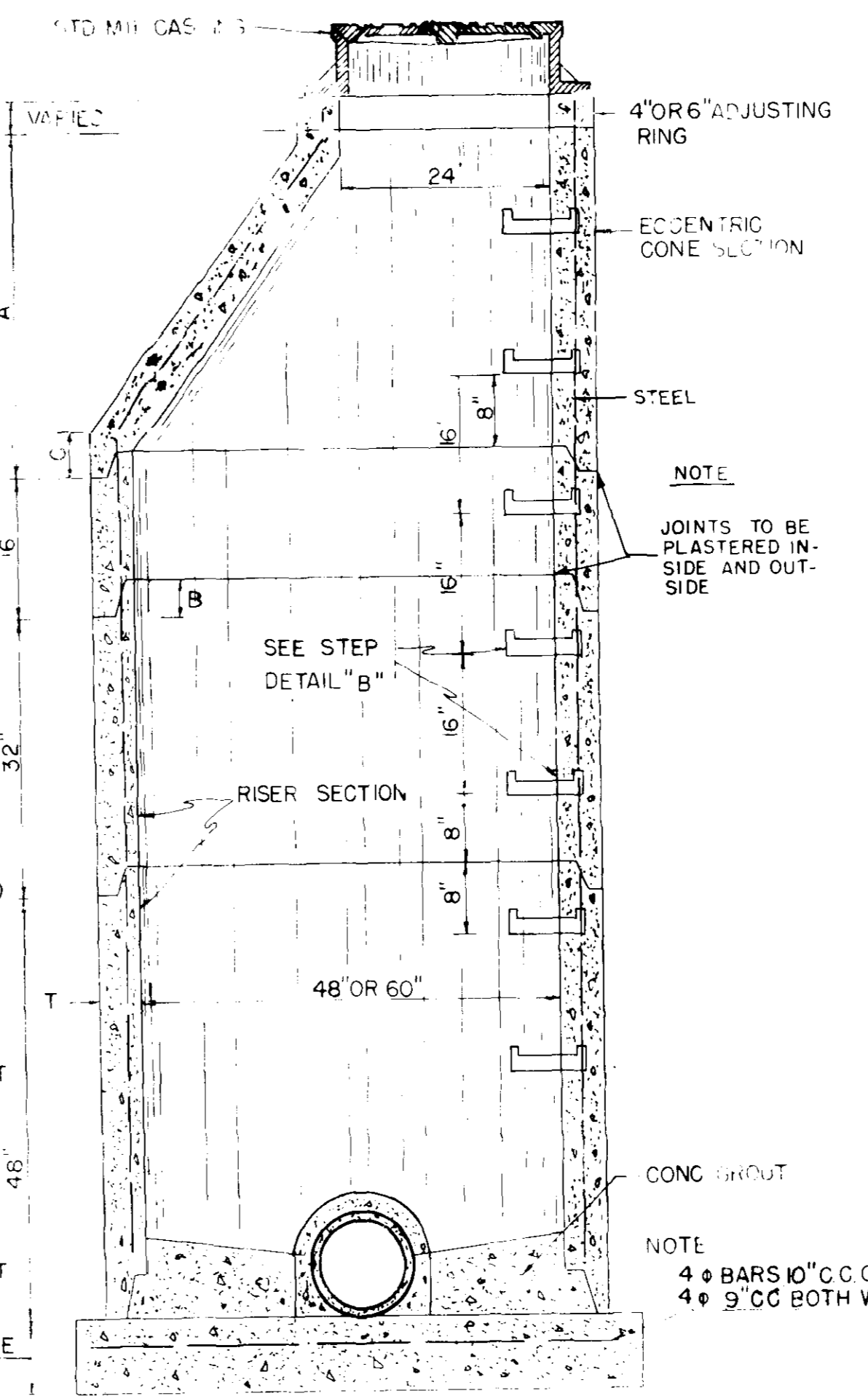
**SECTION BRICK MANHOLE WITH DROP CONNECTION**



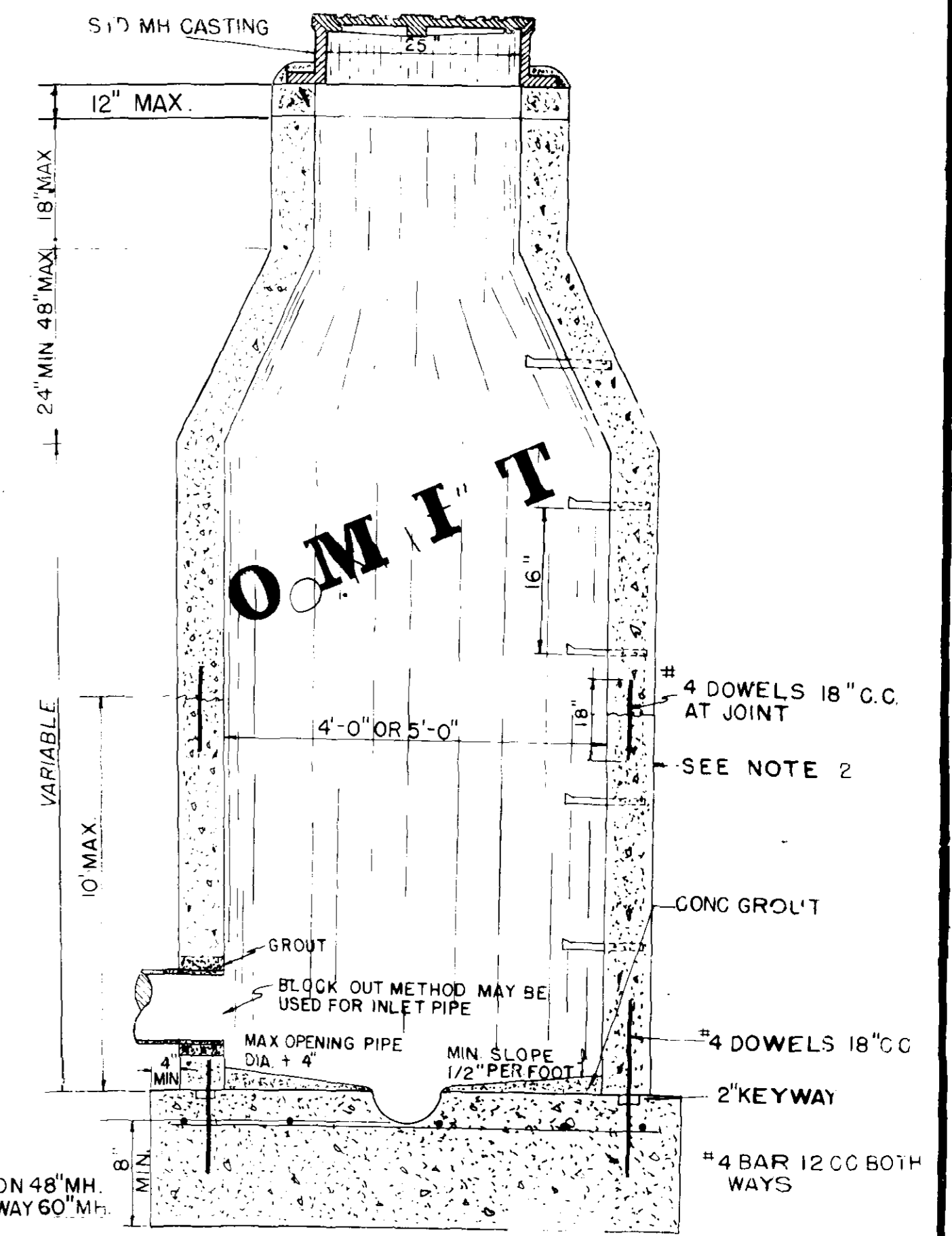
**SECTION BRICK MANHOLE**



**SECTION OF PRECAST CONCRETE MANHOLE WITH DROP CONN.**

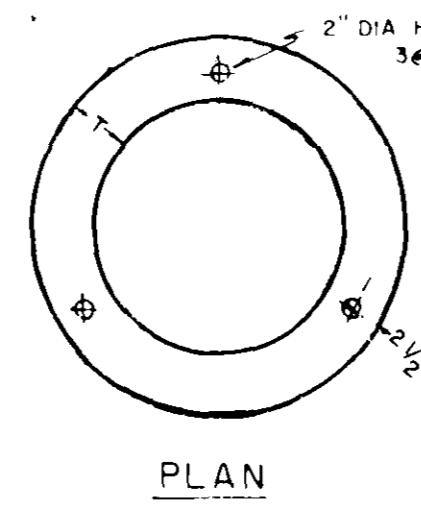
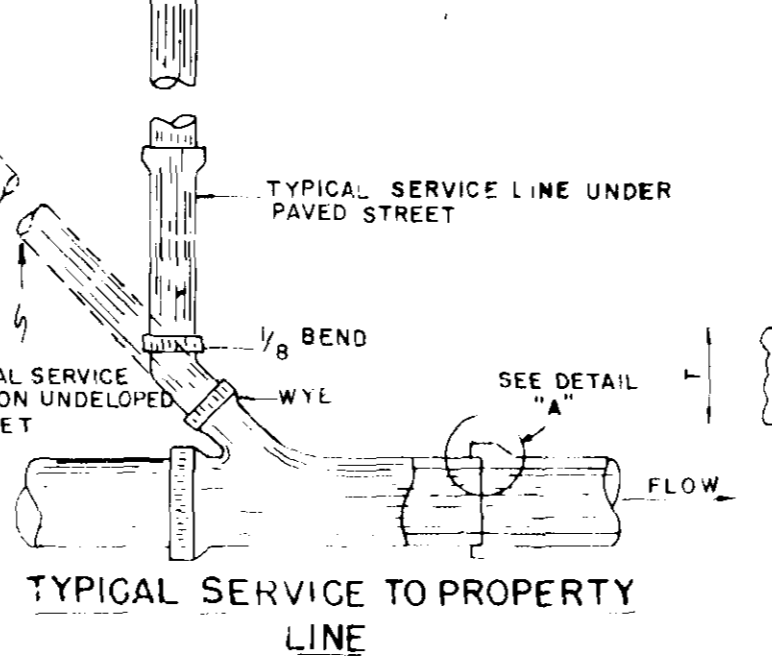
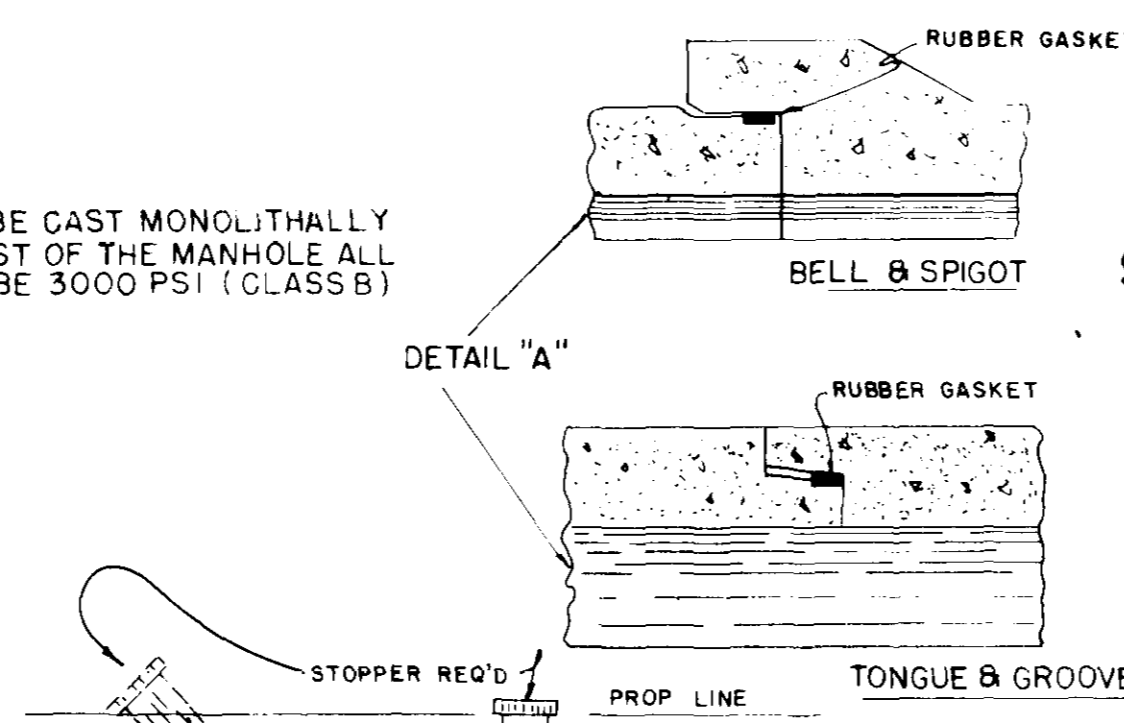


**SECTION OF PRECAST CONCRETE MANHOLE**

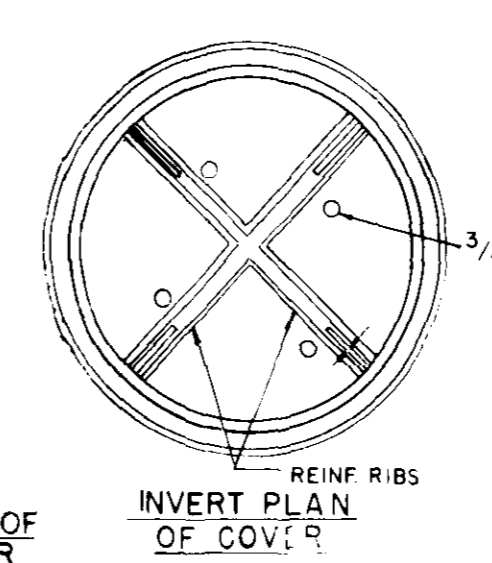
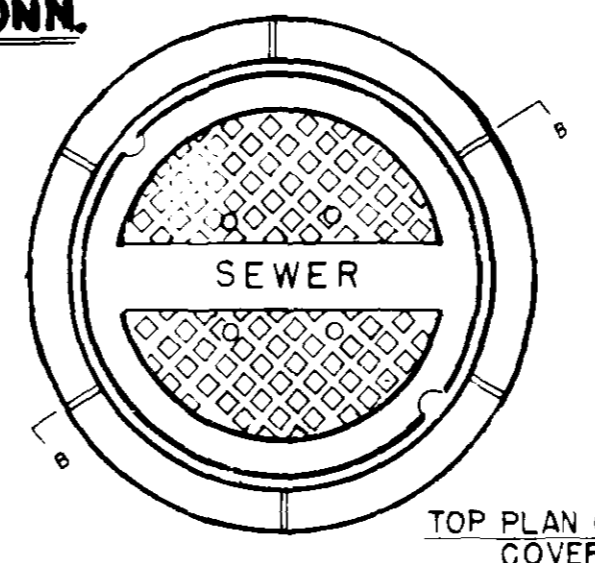
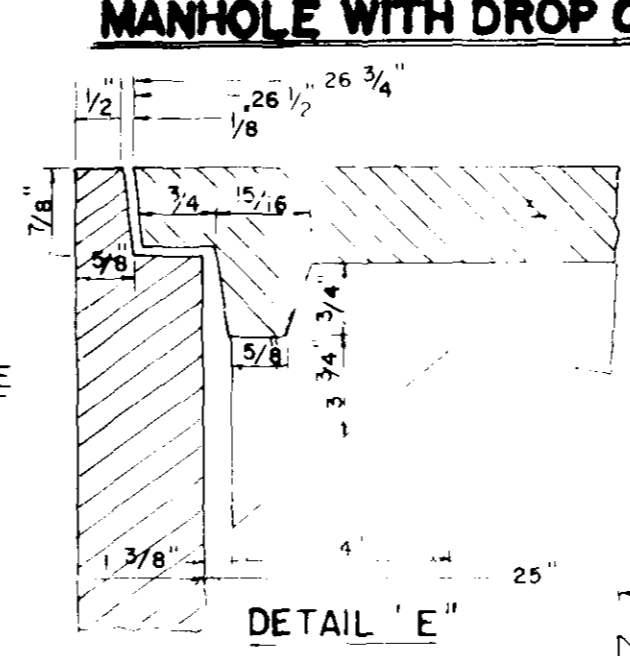


**CAST-IN-PLACE MANHOLE WITH PREPOURED BASE**

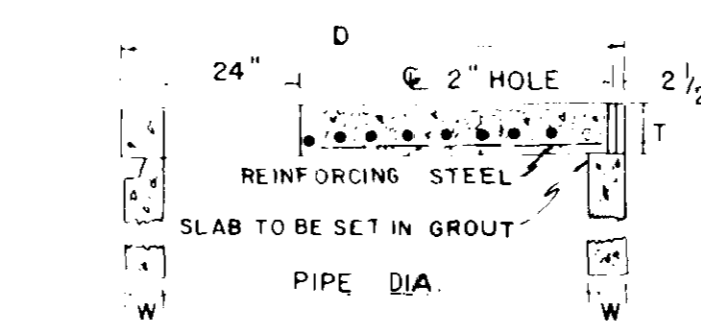
NOTE: BASE SHALL BE CAST MONOLITHICALLY WITH THE REST OF THE MANHOLE ALL CONC SHALL BE 3000 PSI (CLASS B)



**TYPICAL SERVICE TO PROPERTY LINE WITH MODIFIED TEE JOINT**

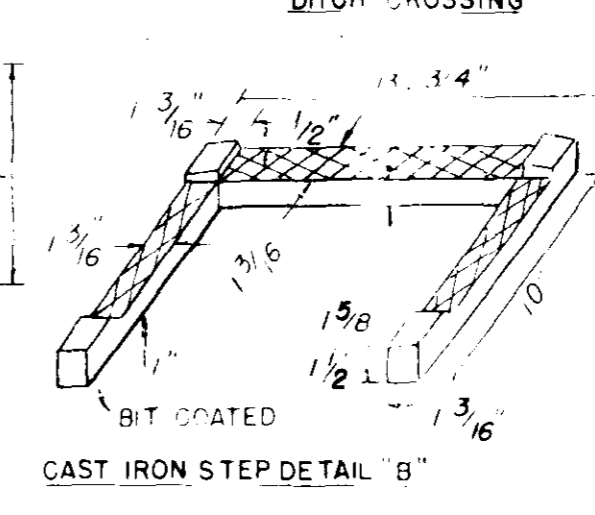
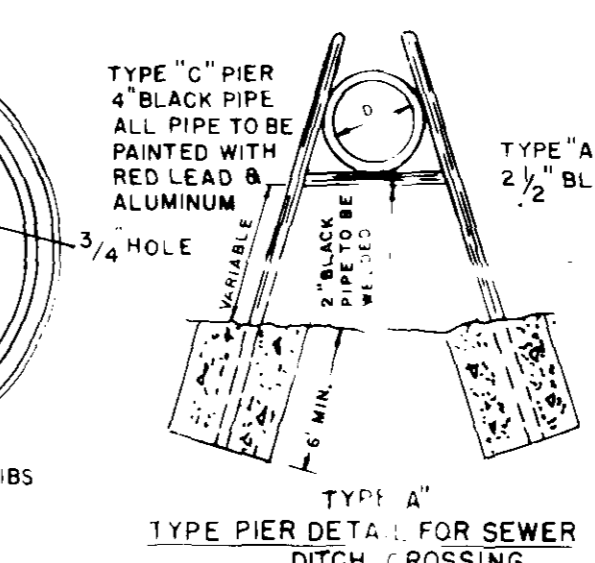


**STD. MH CASTING**

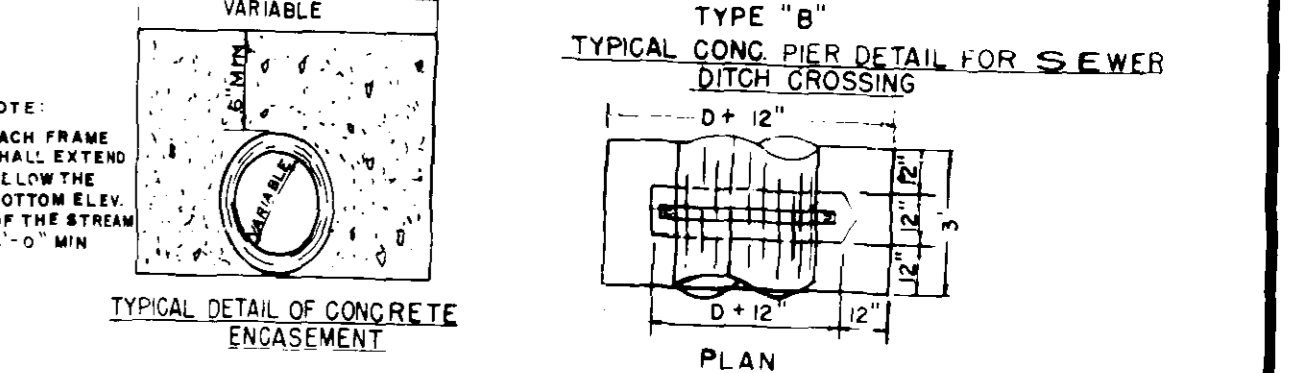
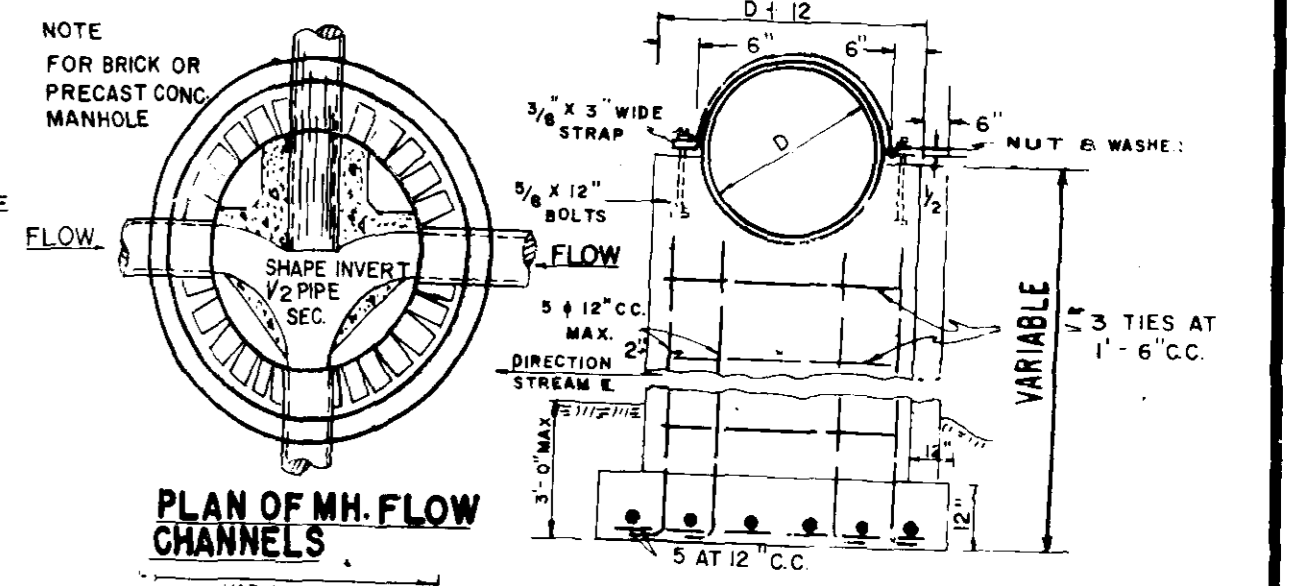


PIPE DIA.	W	D	T	EST. WT.
48"	5"	58"	6"	1,145 LBS
54"	5 1/2"	65"	8"	1,990 LBS
60"	6"	72"	8"	2,515
65"	6 1/2"	79"	8"	3,090
72"	7"	86"	8"	3,720
84"	8"	100"	8"	5,140
96"	9"	114"	8"	6,775
108"	9"	126"	8"	8,345

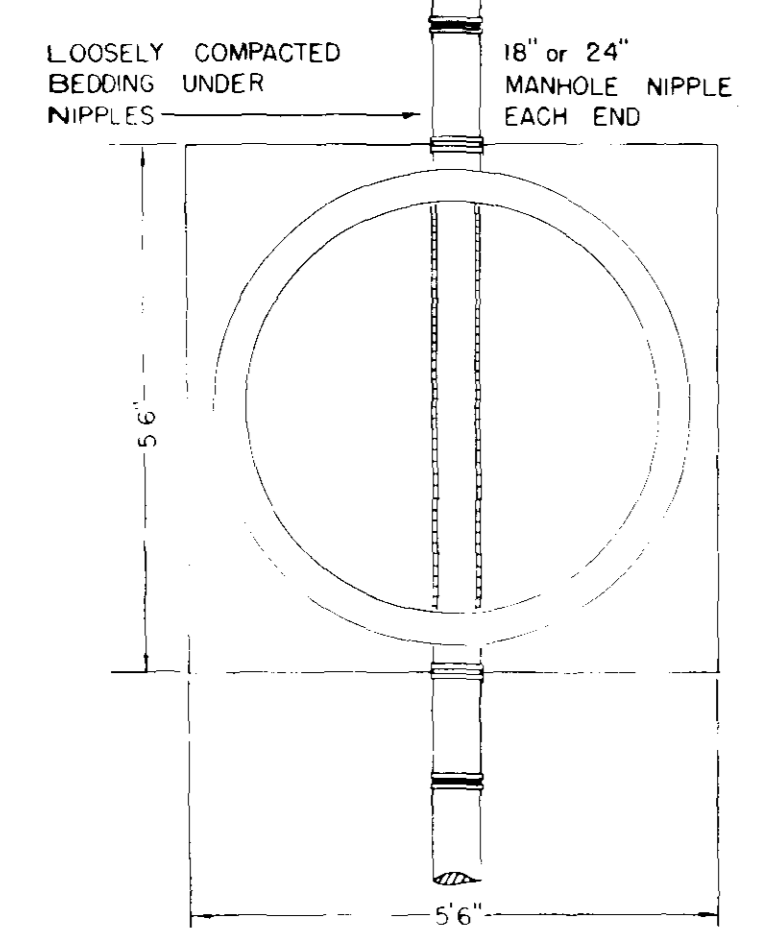
**FLAT SLAB MANHOLE TOP**



**STEP DETAIL "A"**



GENERAL NOTES:  
 WHERE SOIL AT THE ELEVATION OF THE BASE OF A MANHOLE IS UNSUITABLE, THE THICKNESS AND/OR BASE WILL BE INCREASED AS DIRECTED BY THE ENGINEER.  
 PIPE JOINTS FORMED BY JUTE AND HOT POURED BITUMINOUS COMPOUND ARE NOT PERMISSIBLE.  
 JOINTS FORMED BY RUBBER GASKET PLUS REFINED PLASTIC CEMENT COMPOUND WILL BE REQUIRED.



**TYPICAL PIPE CONNECTION TO MANHOLE**

SECTION OF PRECAST CONCRETE MANHOLE						
DIA.	A	B	C	T	APPROX. CONC WEIGHT LBS. PER SQ. FT.	APPROX. CONC WEIGHT LBS. PER CU. YD.
48"	38"	3 1/2"	5"	5"	2075	870
60"	36"	5"	9"	6"	1455	1250

APPD  
 REVISIONS  
 DATE  
 BY  
 M.C.

**SANITARY SEWER MANHOLE & APPURTENANCE FOR 6" TO 42" SEWER**

APPROVED 5-1-68 CITY ENGINEER

STD. NO. 1-138-A (S)