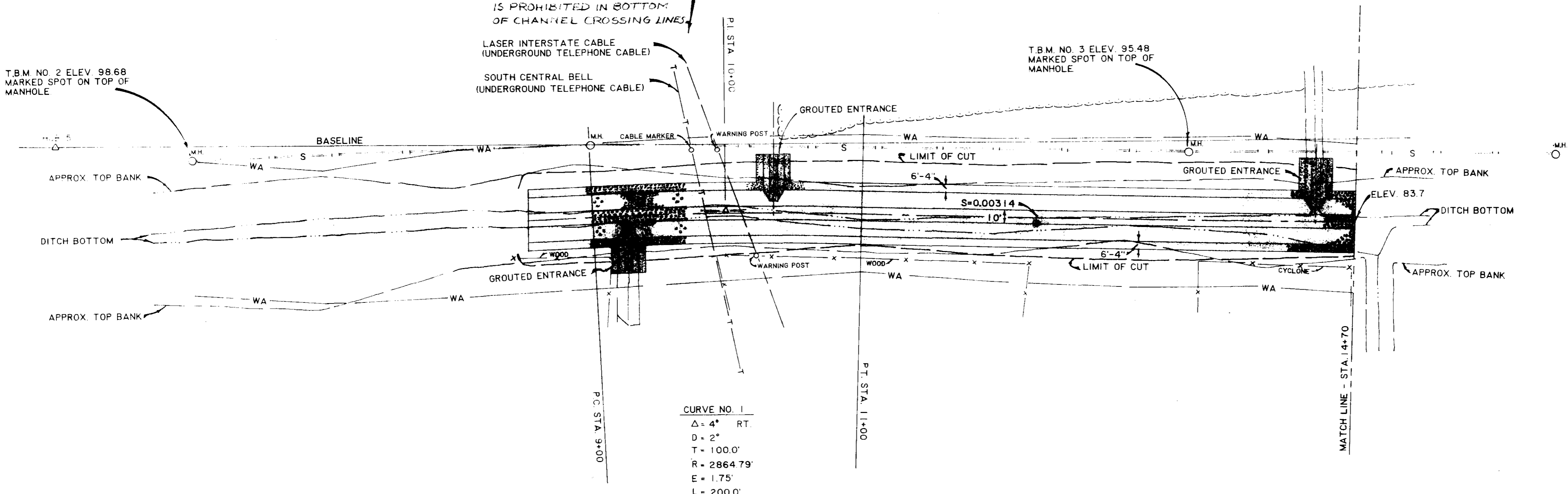


GRADATION FOR ROCK RIPRAP	
STONE WEIGHT (POUNDS)	CUMULATIVE % LIGHTER BY WEIGHT
225	100
85	25 - 50
10	5 - 20

SPALLS AND ROCK DUST THAT WILL PASS A 3" SIEVE SHALL CONSIST OF LESS THAN 5% BY WEIGHT.

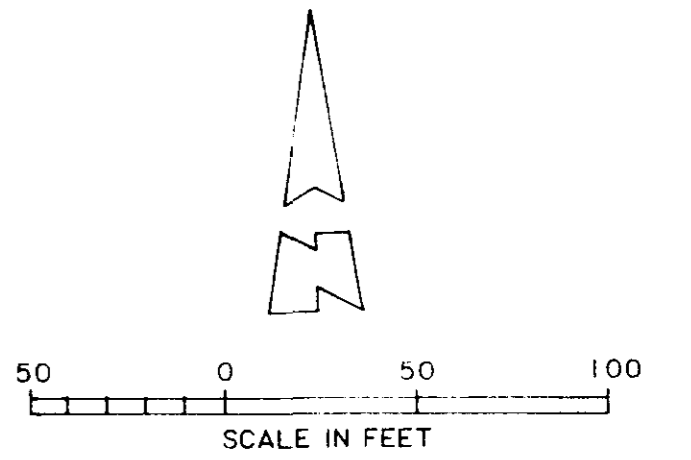
USE EXTREME CAUTION NEAR TELEPHONE CABLES IN CONTACT JEFF D. HARRISON, SOUTH CENTRAL BELL, 961-1585 HEAVY EQUIPMENT TRAFFIC IS PROHIBITED IN BOTTOM OF CHANNEL CROSSING LINES



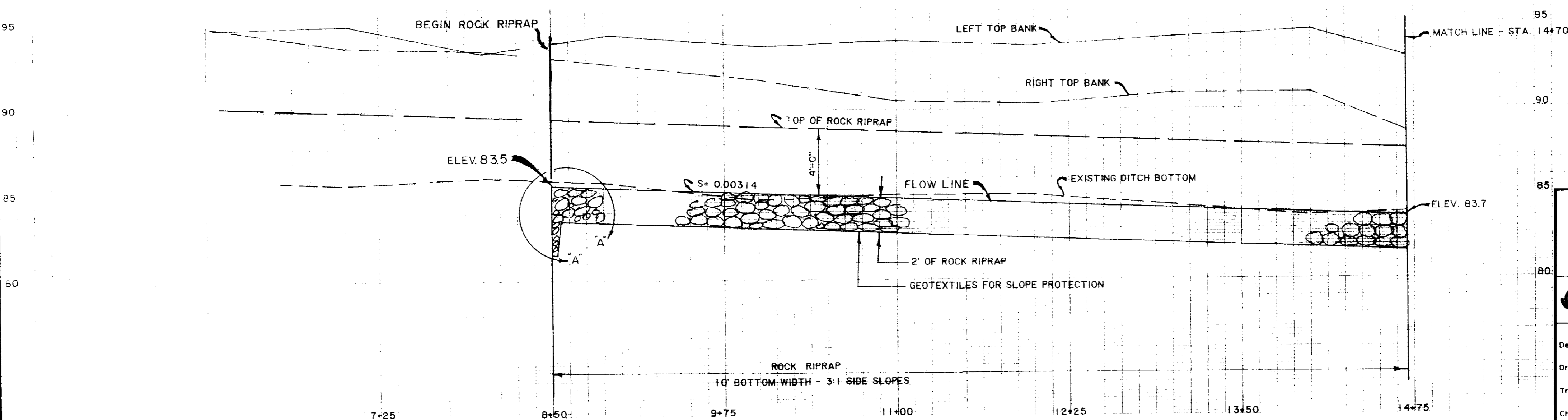
CURVE NO. 1

$\Delta = 4^\circ$	RT.
$D = 2^\circ$	
$T = 100.0'$	
$R = 2864.79'$	
$E = 1.75'$	
$L = 200.0'$	

- LEGEND
- Δ TRANSIT STATIONS
 - W WATER LINES
 - S SEWER LINES
 - T TELEPHONE LINES
 - APPROX. LIMIT OF CUT
 - WA APPROX. WORK AREA LIMITS



NOTE: PROPERTY LINES AND SECTION LINES ARE APPARENT LINES, NOT SURVEYED

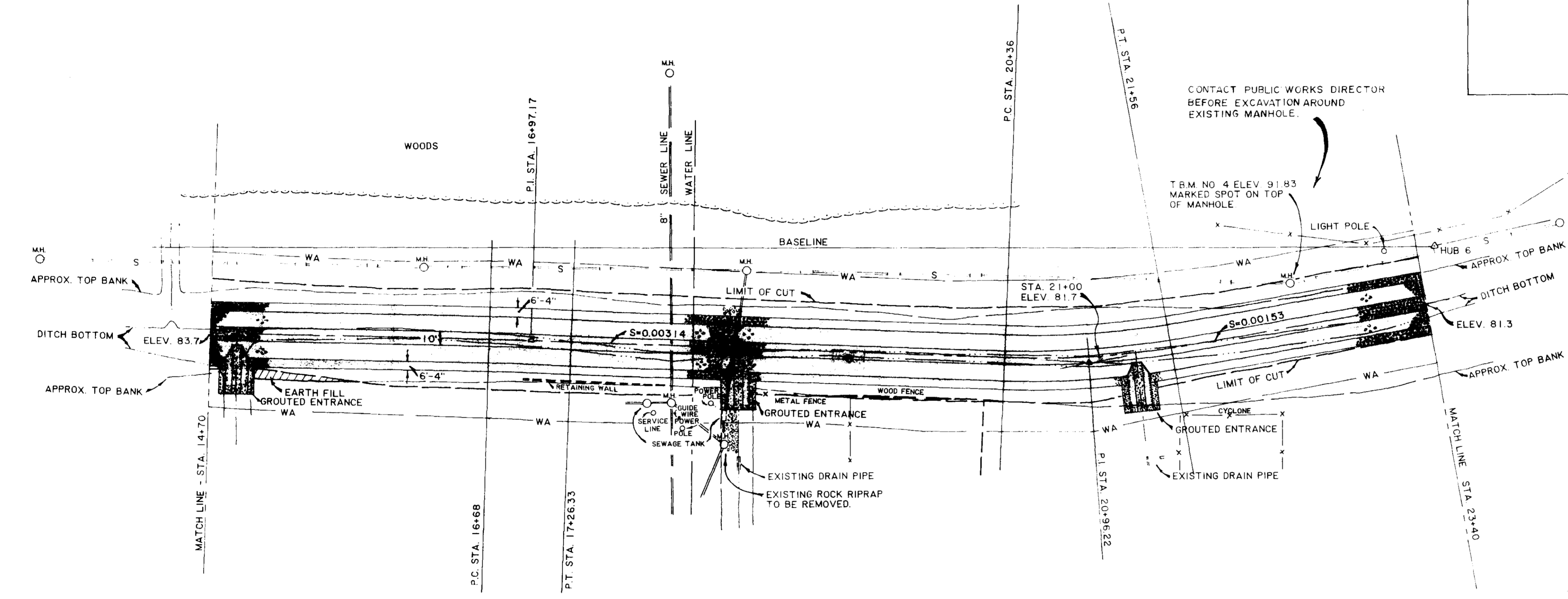
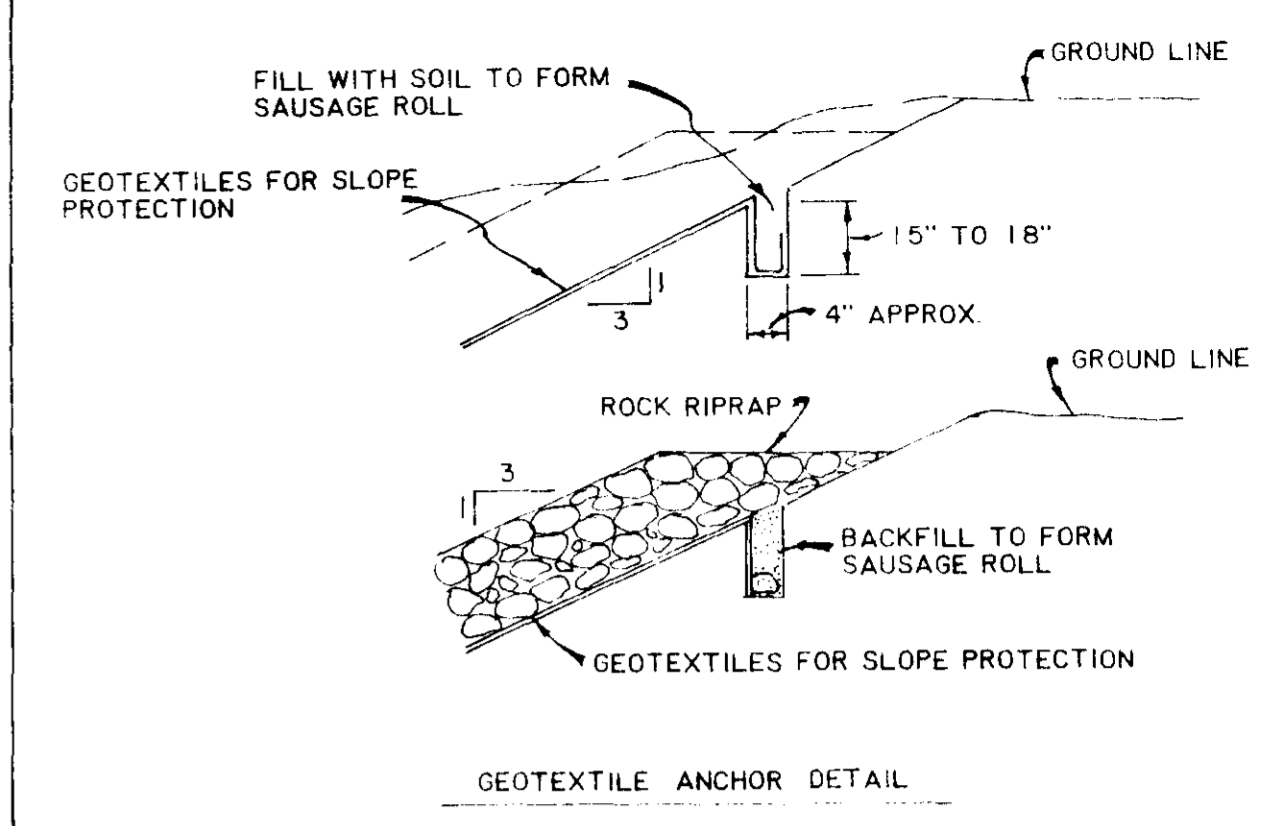


BEAVER CREEK
EMERGENCY WATERSHED PROJECT
CITY OF RIDGELAND
MADISON COUNTY, MISSISSIPPI
PLAN - PROFILE

**U. S. DEPARTMENT OF AGRICULTURE
SOIL CONSERVATION SERVICE**

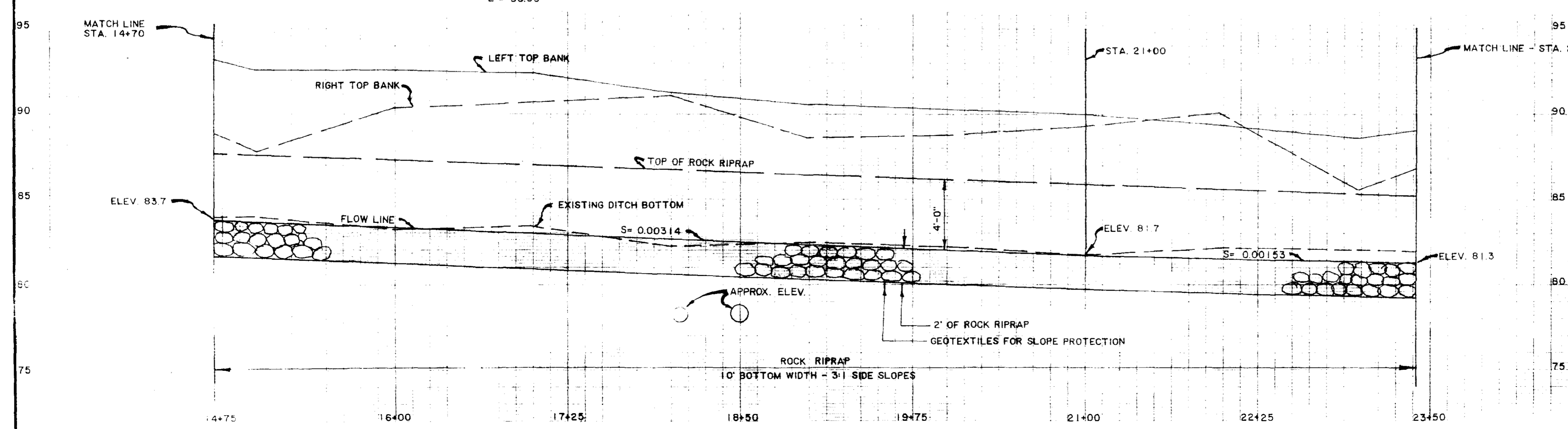
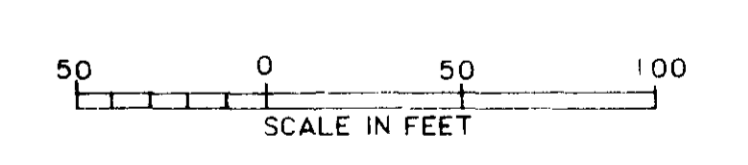
Designed: Brandon EWP Staff	Date: 11-86	Approved by:
Drawn: Brandon EWP Staff	Date: 11-86	
Traced:		Title: No. 2
Checked: <i>Reginald...</i>	Date: 11/86	Sheet: No. 2 of 5

CURVE NO. 3
 $\Delta = 12^\circ 00' RT$
 $D = 10'$
 $T = 60.22'$
 $R = 572.96'$
 $E = 3.16'$
 $L = 120.00'$



CURVE NO. 2
 $\Delta = 0^\circ 35' RT$
 $D = 1'$
 $T = 29.17'$
 $R = 5729.58'$
 $E = 0.07'$
 $L = 58.33'$

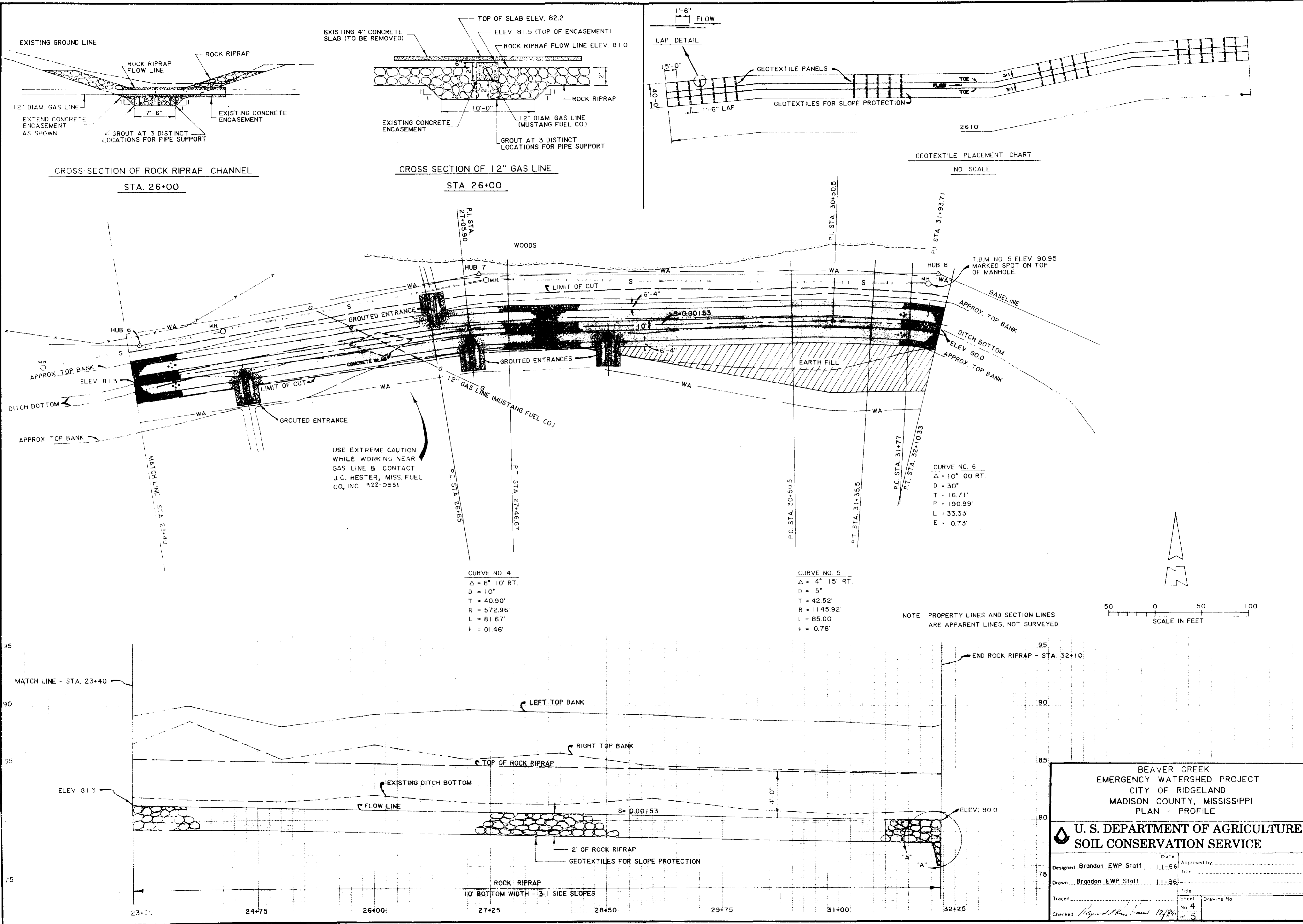
NOTE: PROPERTY LINES AND SECTION LINES ARE APPARENT LINES, NOT SURVEYED

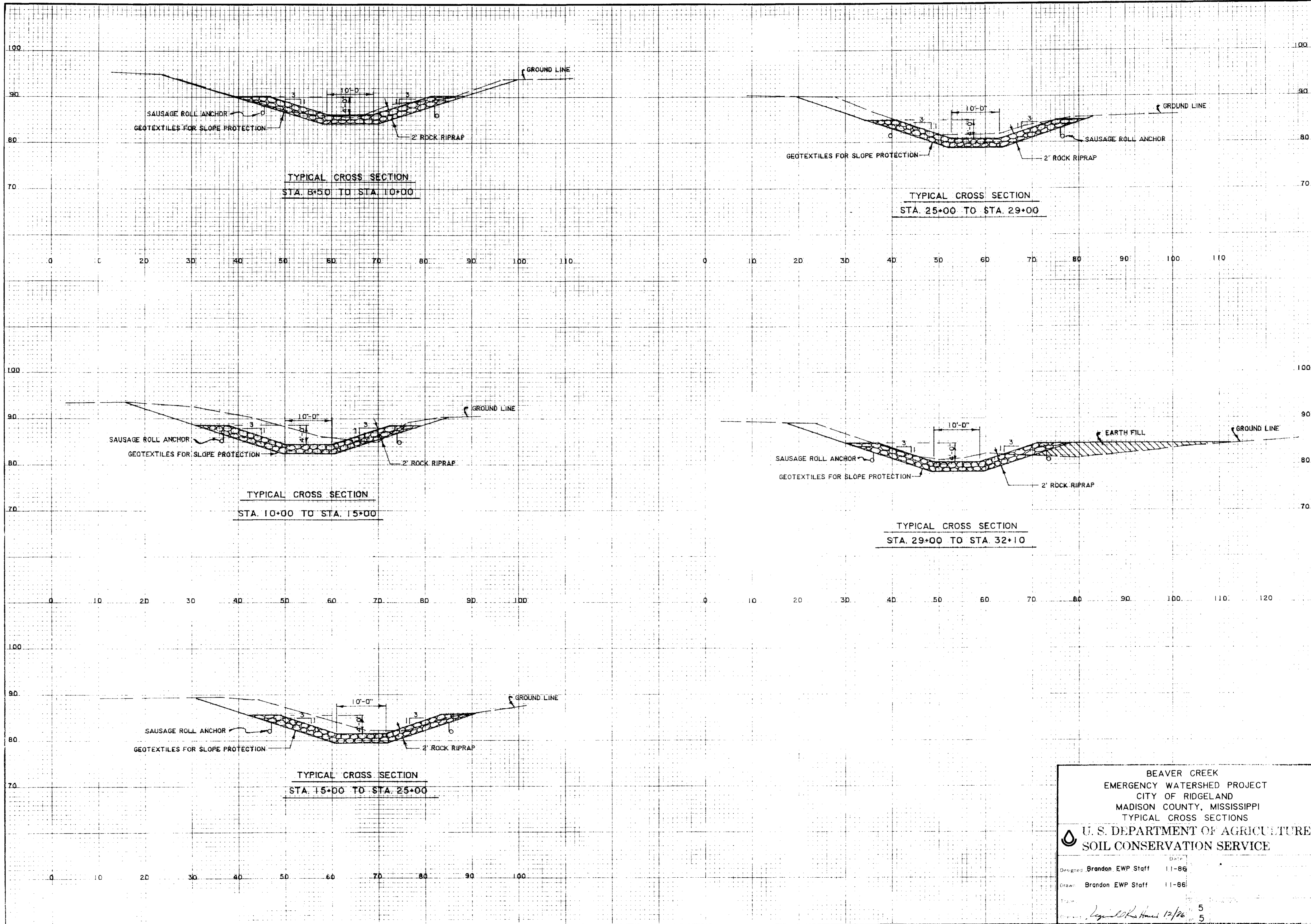


BEAVER CREEK
 EMERGENCY WATERSHED PROJECT
 CITY OF RIDGELAND
 MADISON COUNTY, MISSISSIPPI
 PLAN - PROFILE

**U. S. DEPARTMENT OF AGRICULTURE
 SOIL CONSERVATION SERVICE**

Designed	Brandon EWP Staff	Date	11-86	Approved by	
Drawn	Brandon EWP Staff	Date	11-86	Title	
Traced		Sheet	3	Drawing No.	
Checked		of	5		





BEAVER CREEK
EMERGENCY WATERSHED PROJECT
CITY OF RIDGELAND
MADISON COUNTY, MISSISSIPPI
TYPICAL CROSS SECTIONS

U. S. DEPARTMENT OF AGRICULTURE
SOIL CONSERVATION SERVICE

Designed: Brandon EWP Staff 11-86
 Drawn: Brandon EWP Staff 11-86
 Date: 12/86
 5
 5