

# CITY OF RIDGELAND, MISSISSIPPI

## BRAME ROAD WATER & SEWER IMPROVEMENTS

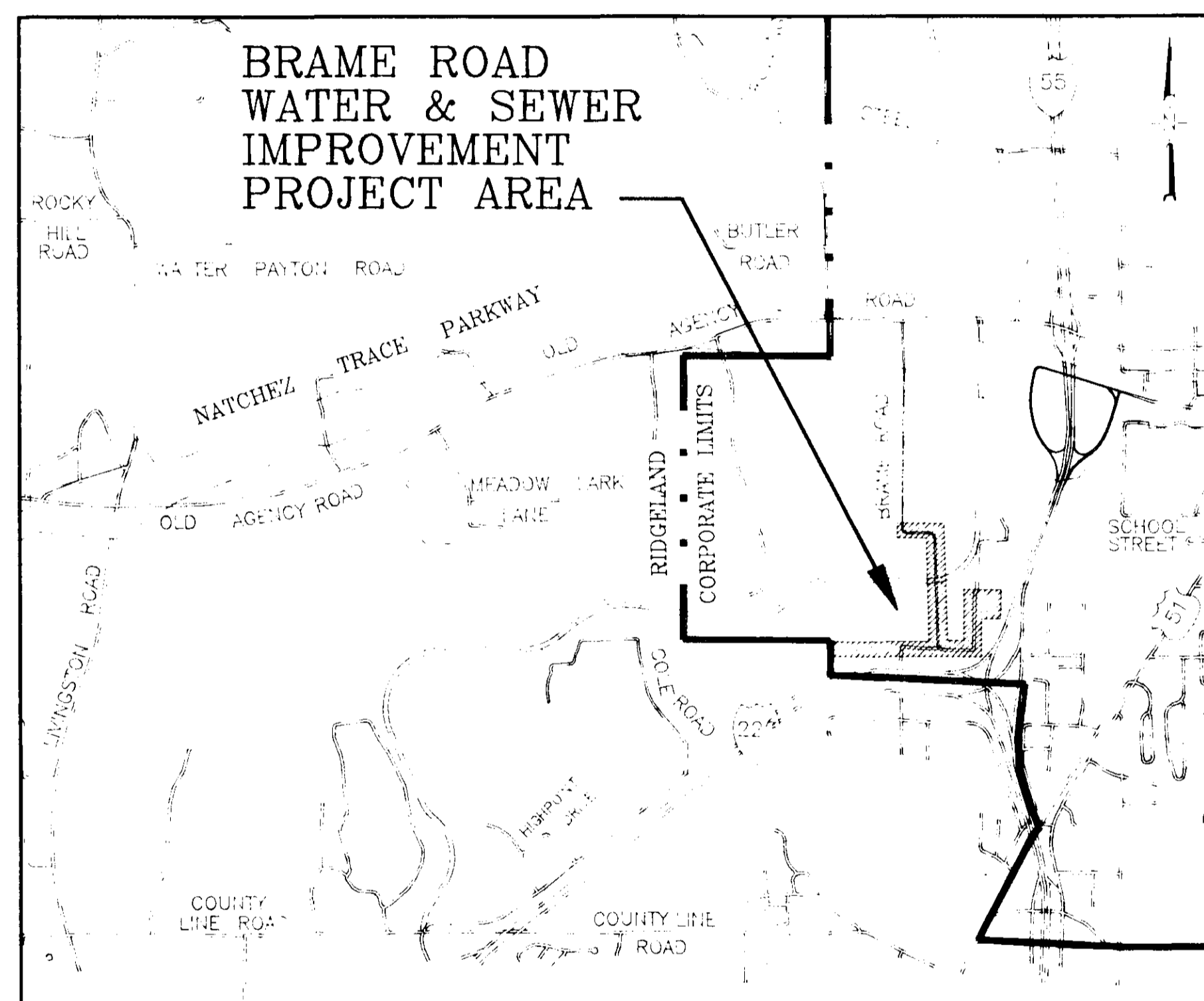
1989 - 1990 Community Development Block Grant #9-1129-169-PF-01

### CITY OF RIDGELAND, MISSISSIPPI

Mayor: Gene F. McGee

Mayor Pro Tem: Harvey Carr, Jr.

Aldermen: Brian Barcellona  
Al Bible  
Harvey Carr, Jr.  
Linda Davis  
Daryl Smith



City Attorney: Jerry Mills

City Clerk: Michael McPhearson

Public Works Director: Sam Vinson, P.E.

VICINITY MAP

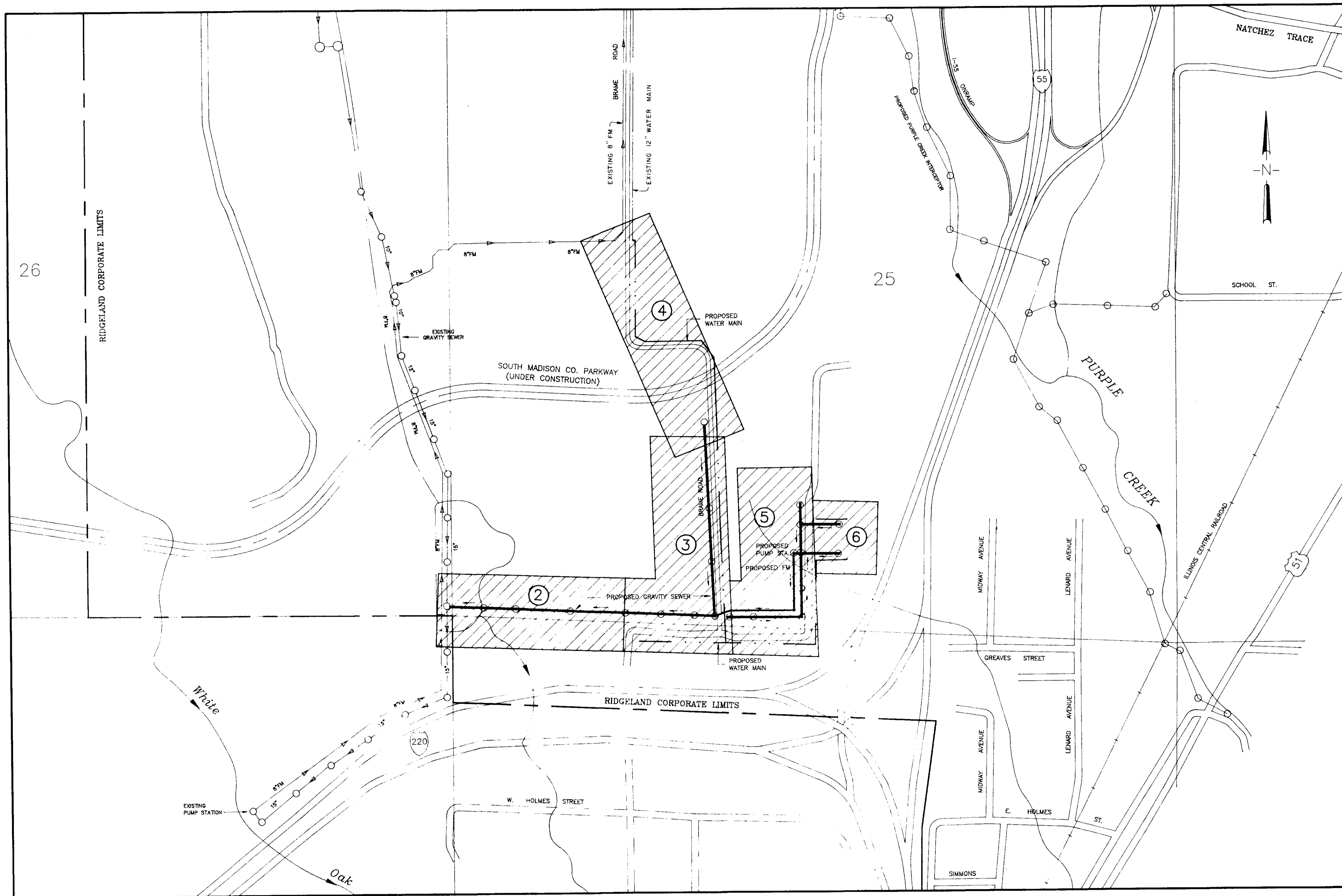
September, 1990

WAGGONER ENGINEERING, INC.  
Consulting Engineers  
Jackson, Mississippi

AS BUILT 7/92

**PWP-00210**

W.E.I. JOB NO.  
89-037



GENERAL CONSTRUCTION NOTES

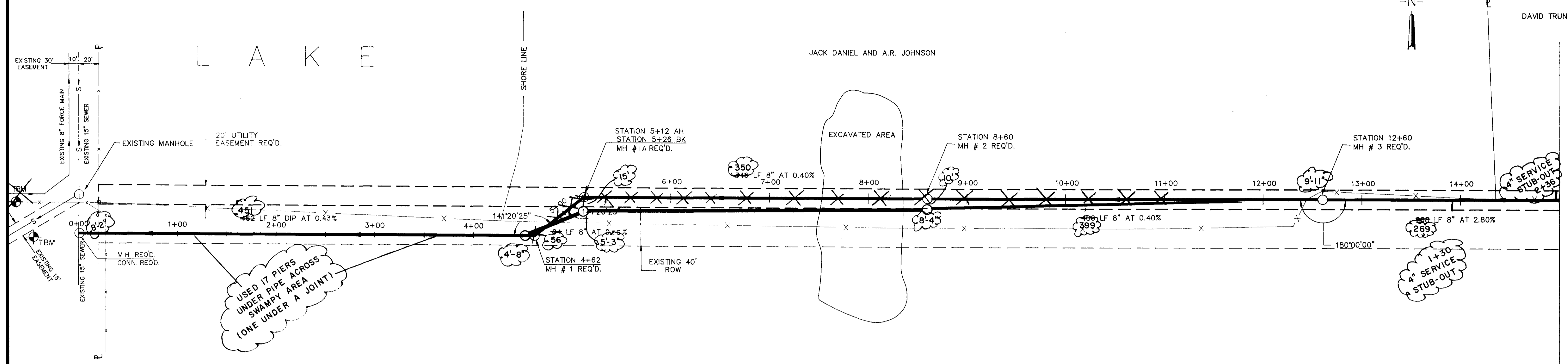
1. The existing utility locations shown on plans are approximate only. The Contractor shall coordinate the location (horizontal and vertical) of the existing utilities (power, telephone, gas, water, sewer, etc.) with the appropriate utility company before construction begins.
2. Any utility line or service line encountered during construction, whether shown on plans or not, shall be protected by the Contractor and any repairs necessary due to damage to same by the Contractor shall be at no additional cost to the Owner.
3. The Contractor shall be responsible for verifying horizontal and vertical clearances on all utility crossings before installation.
4. The Contractor shall fertilize and seed all areas where the existing vegetation was removed or disturbed during construction.
5. Unsuitable bedding, backfill or material which may be encountered shall be excavated to the limits required and backfilled with acceptable material to the lines and grades shown on the plans.
6. Sanitary and storm sewer reach lengths may vary in construction of project to conform to normal joint lengths with prior permission of Engineer.
7. The Contractor shall maintain local traffic to all residences and businesses fronting along the project for the duration of the work.
8. All existing storm sewer pipe or culverts within the construction limits which are disturbed shall be replaced by the Contractor as directed and shall be considered an absorbed cost.
9. All existing sanitary manholes within the construction limits shall be adjusted to finished grade by Contractor. Any manhole casting salvaged shall be the property of the Owner.
10. Any TBM's indicated on plans which are or may be in conflict with construction activities shall be relocated by Engineer prior to commencement of construction in the immediate area.
11. All detailed construction staking will be by Contractor at no cost to the Owner.
12. All non-municipal utilities will be relocated or adjusted by the affected company to eliminate any conflict with the proposed improvements at no cost to the Contractor.
13. The Contractor shall be responsible for completing all sampling and testing of materials, and for submission of same to Engineer for review prior to their use. This shall include select backfill, concrete, asphalt, aggregates and other items as specified by the Engineer. Such prior use testing shall be an absorbed item.
14. The Contractor shall obtain and furnish to the Engineer copies of manufacturers certifications for all sewer and water piping, storm culverts, castings, specials and seed. Such certification shall state that the subject material meets the specified quality, grade, purity, class or weight, or that the subject material meets or exceeds the requirements of the applicable ASTM, AASHTO, or other standards. Certifications shall be submitted to the Engineer prior to incorporation of the subject material into the project.
15. The Contractor shall verify the invert elevation of existing storm drains and sanitary sewer mains to be adjusted or incorporated into the work prior to initiation of construction on any new lines connecting thereto. Any variations from plan grades shall be reported to the Engineer.
16. Cut zones for storm and sanitary sewer, where shown, will be measured from the original ground profile or proposed centerline, whichever is less.
17. Driveway or roadway removal and replacement will be an absorbed cost item by Contractor and included in the lump sum price bid for clearing and grubbing.
18. All fences within construction limits shall be removed and replaced to original condition or better as an absorbed cost to be included in lump sum price bid for clearing and grubbing.

<b>CITY OF RIDGELAND, MISSISSIPPI</b>			
<b>BRAME ROAD WATER &amp; SEWER</b>			
<b>PROJECT LAYOUT</b>			
CDBG # 9-1129-189-PF-01			
WAGGONER ENGINEERING, INC. Consulting Engineers - Jackson, Mississippi			
DRAWN BY: J.W.P.	DATE: 9-11-90	SHEET NUMBER	
REVIEWED BY: <i>JW</i>	SCALE: 1" = 300'	1 OF 9	

10/10/90

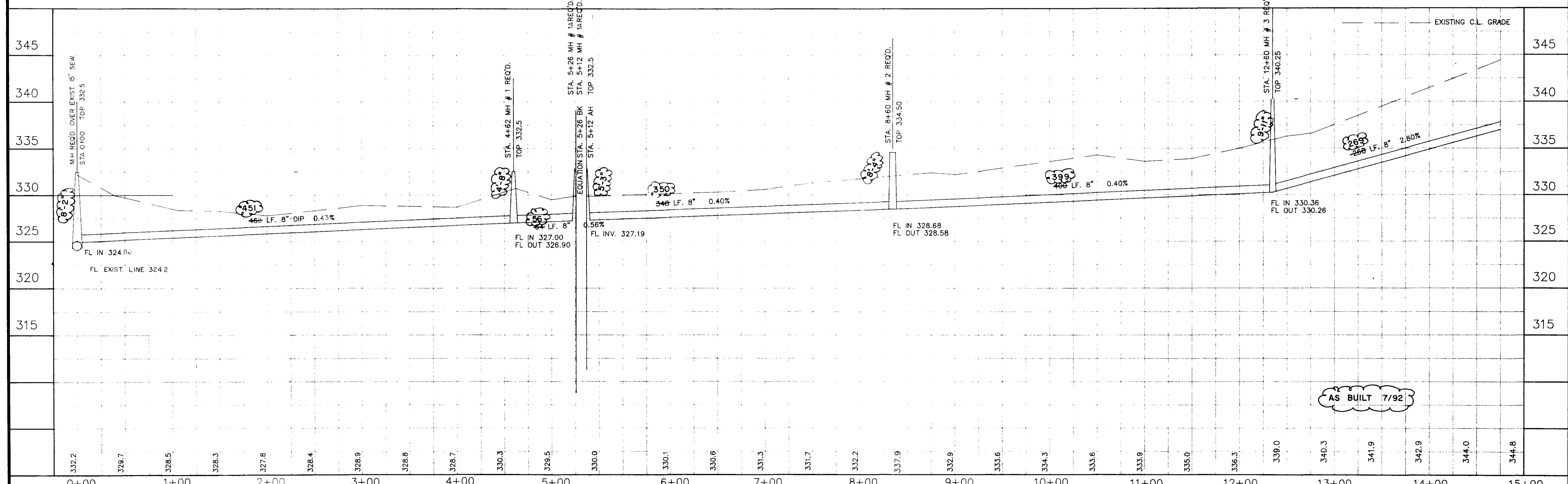
TBM  
RAILROAD SPIKE IN 30" OAK  
ELEV. 334.93

DAVID TRUNNELL



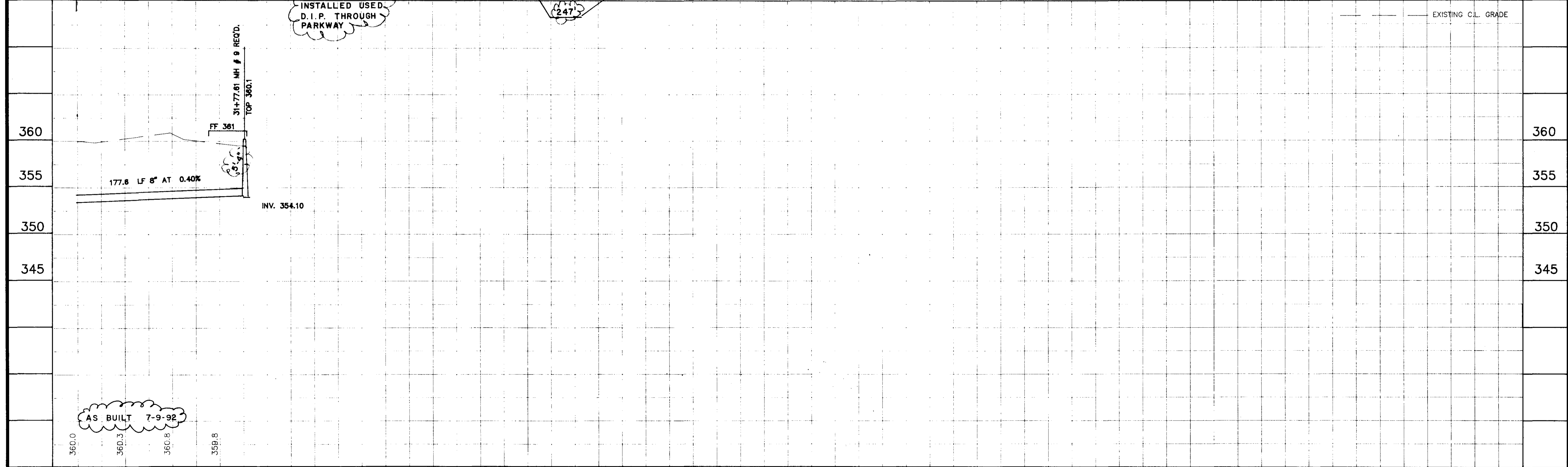
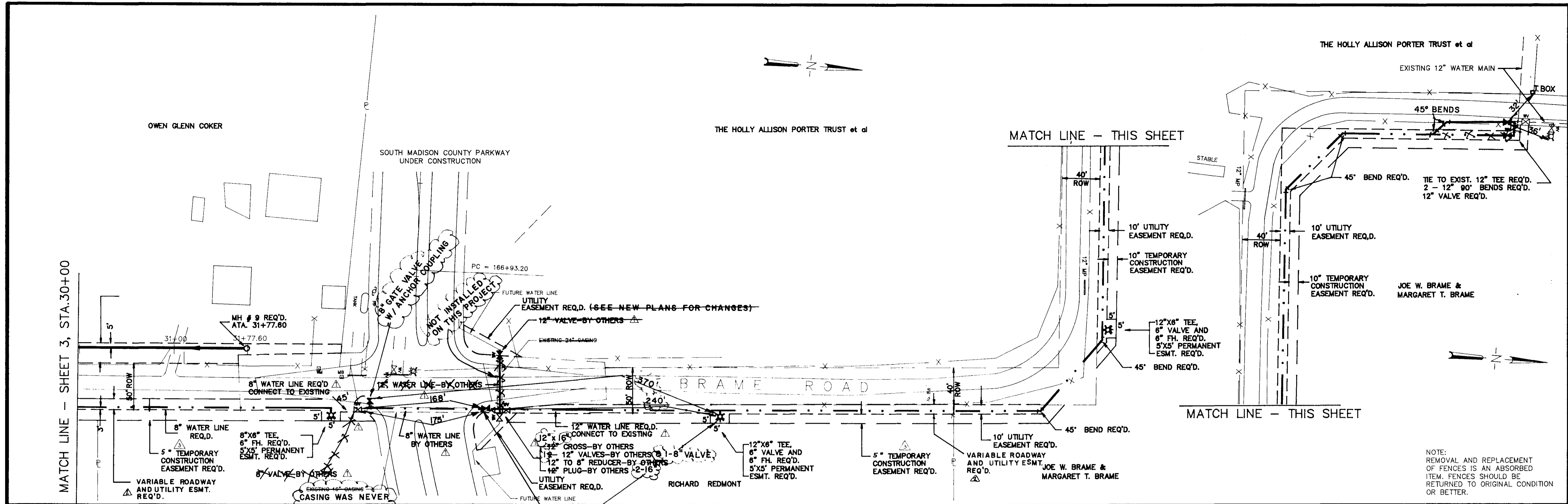
MATCH LINE - SHEET 3, STA. 15+00

NOTE:  
REMOVAL AND REPLACEMENT  
OF FENCES IS AN ABSORBED  
ITEM. FENCES SHOULD BE  
RETURNED TO ORIGINAL CONDITION  
OR BETTER.



7-9-92	AS BUILT	C.S.	DESIGNED	DATE 9-21-90
NO.	DATE	BY	DRAWN J.W.P.	SCALE 1"=50' HORIZ.
		WAGGONER ENGINEERING INC. CONSULTING ENGINEERS JACKSON, MISSISSIPPI		
			BRAME ROAD WATER & SEWER IMPROVEMENTS	
			ACAD PATH ROUTE C:\DWG\RIDGELAN\BRAME\PPRO1 W.E.I. JOB NO. 89-037 SHEET NO. 2 OF 9	

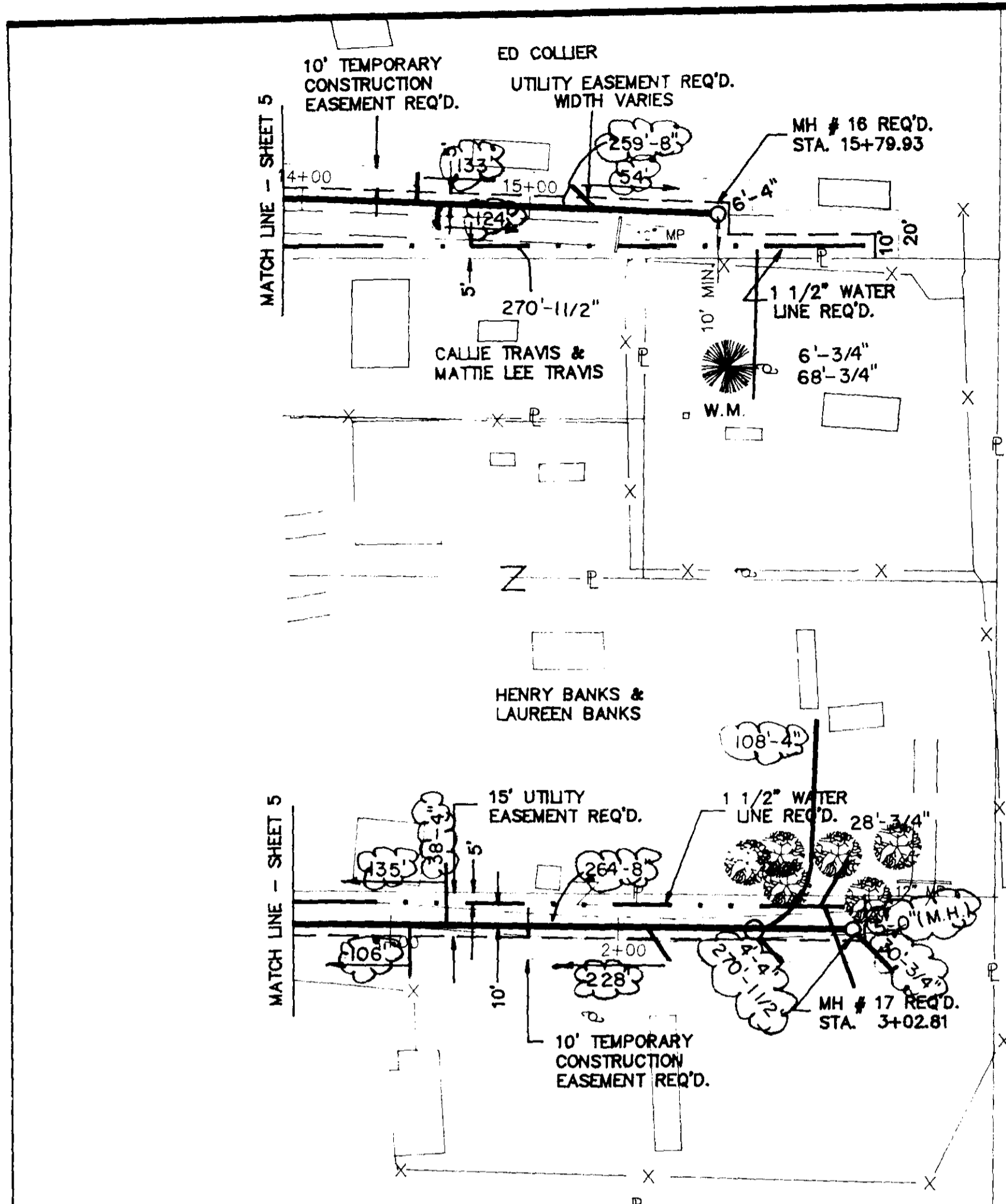




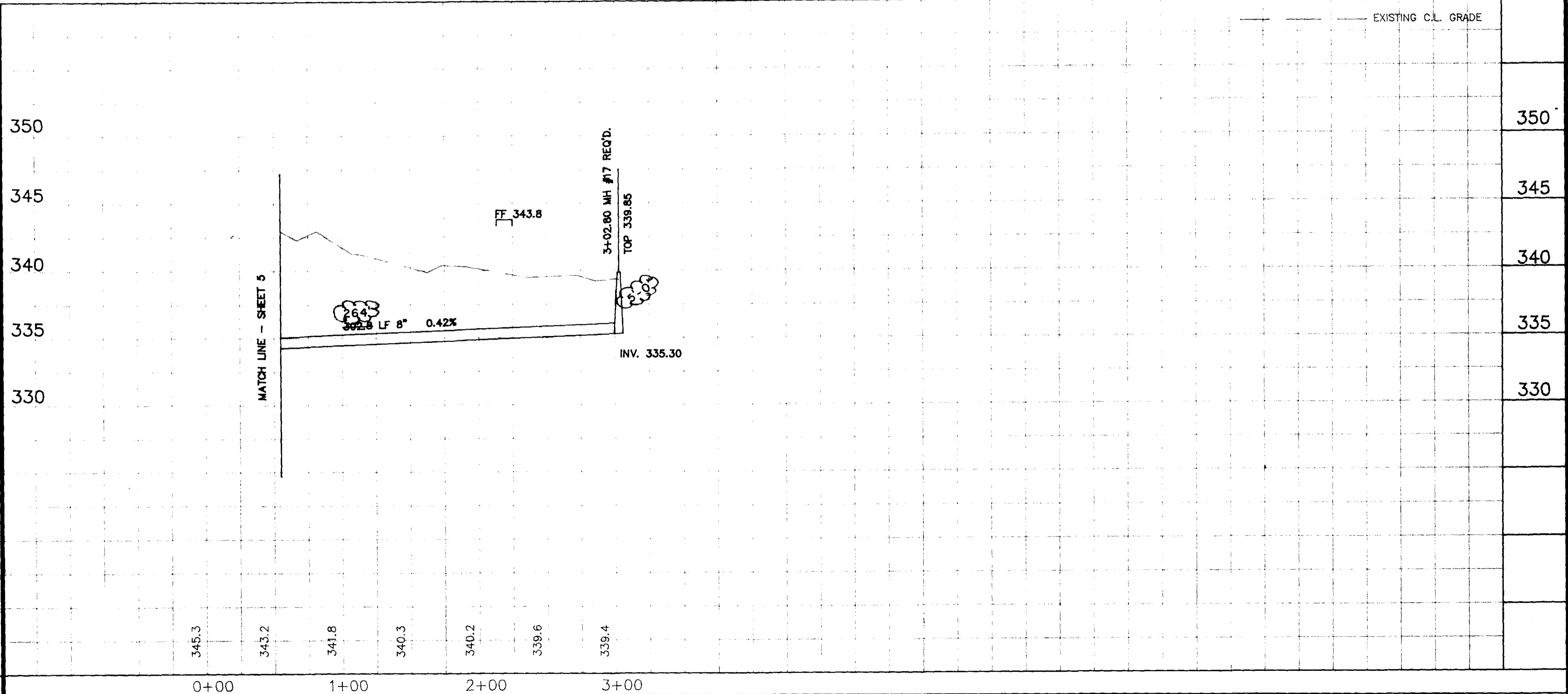
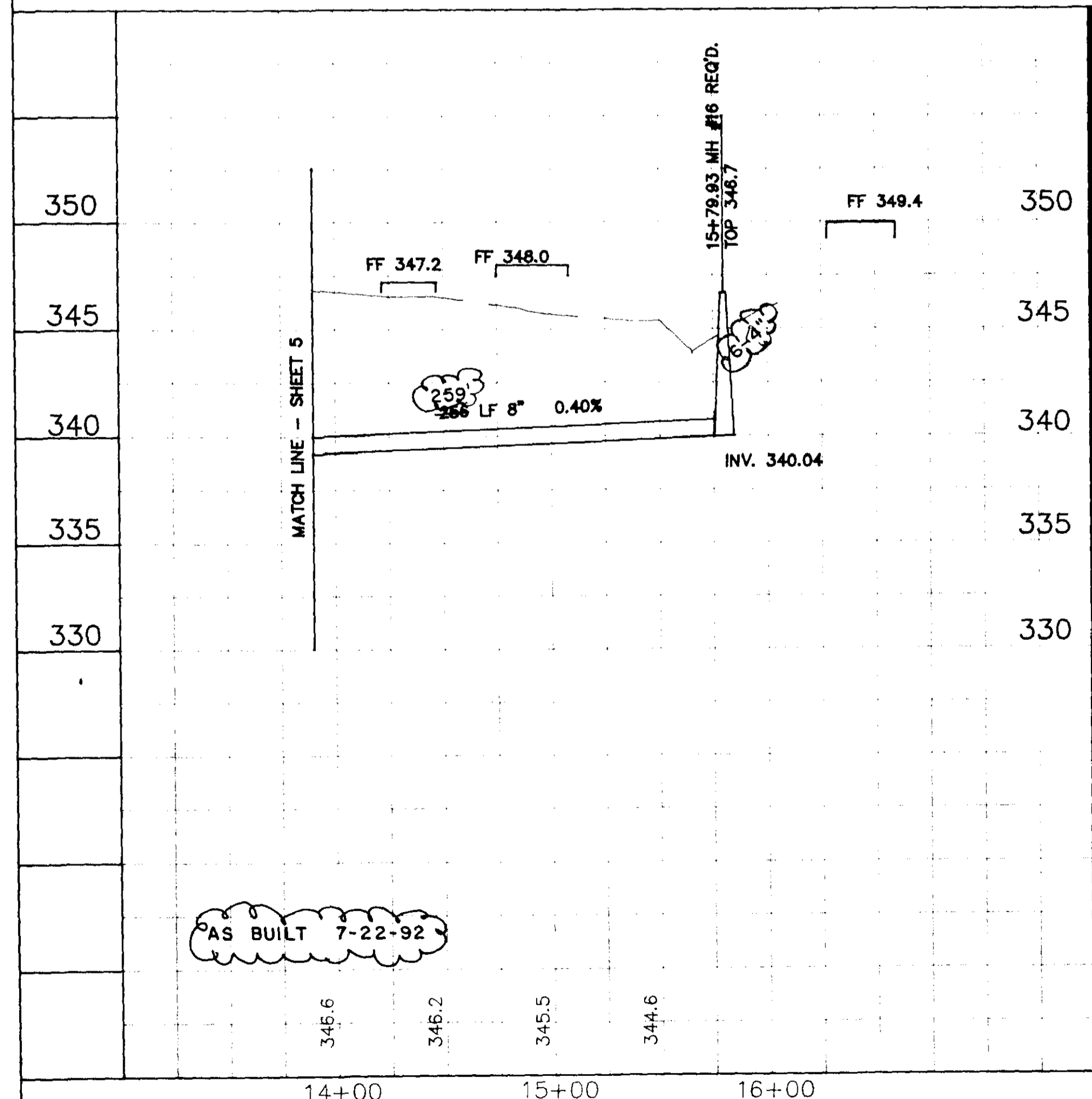
3	9-4-91	TEMP. CONST. ESMT. WIDTH CHANGED	JP	DESIGNED	DATE	WAGGONER ENGINEERING INC. CONSULTING ENGINEERS JACKSON, MISSISSIPPI	BRAME ROAD WATER & SEWER IMPROVEMENTS	ACAD PATH ROUTE C:\DWG\RIDGELAN\BRAME\PPR03	SHEET NO. 4 OF 9
2	9-2-91	EASEMENT ADDED	JP	DATE	9-25-90				
1	8/29/91	REMOVE WATER LINE ACROSS PARKWAY FROM PROJECT	TRC	DRAWN BY	SCALE				
NO.	DATE	REVISIONS		J.W.P.					

NOTE:  
REMOVAL AND REPLACEMENT  
OF FENCES IS AN ABSORBED  
ITEM. FENCES SHOULD BE  
RETURNED TO ORIGINAL CONDITION  
OR BETTER.





NOTE: REMOVAL AND REPLACEMENT OF FENCES IS AN ABSORBED ITEM. FENCES SHOULD BE RETURNED TO ORIGINAL CONDITION OR BETTER.

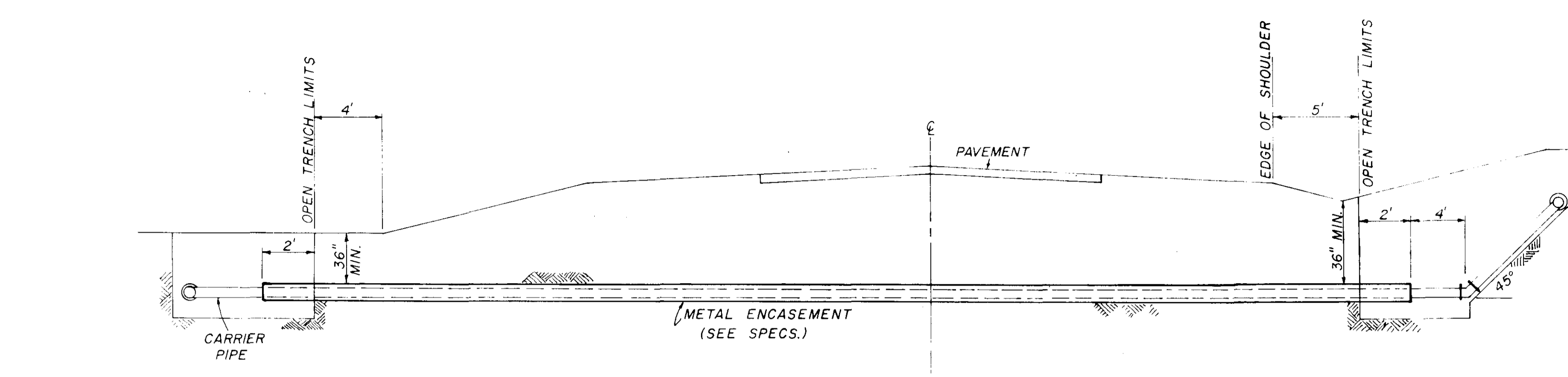


DESIGNED	DATE
DRAWN	SCALE
J.W.P.	1"=50' HORIZ.

WAGGONER ENGINEERING INC. CONSULTING ENGINEERS  
JACKSON, MISSISSIPPI

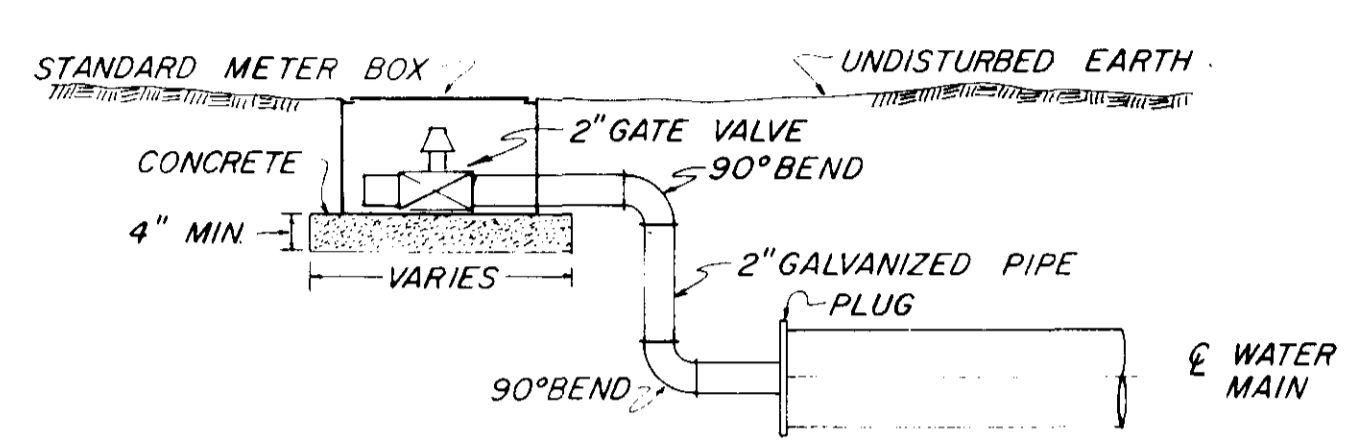
**BRAME ROAD**  
**WATER & SEWER IMPROVEMENTS**

ACAD PATH ROUTE  
C:\DWG\RIDGELAN\BRAME\PRO4  
W.E.I. JOB NO. SHEET NO.  
89-037 6 OF 9

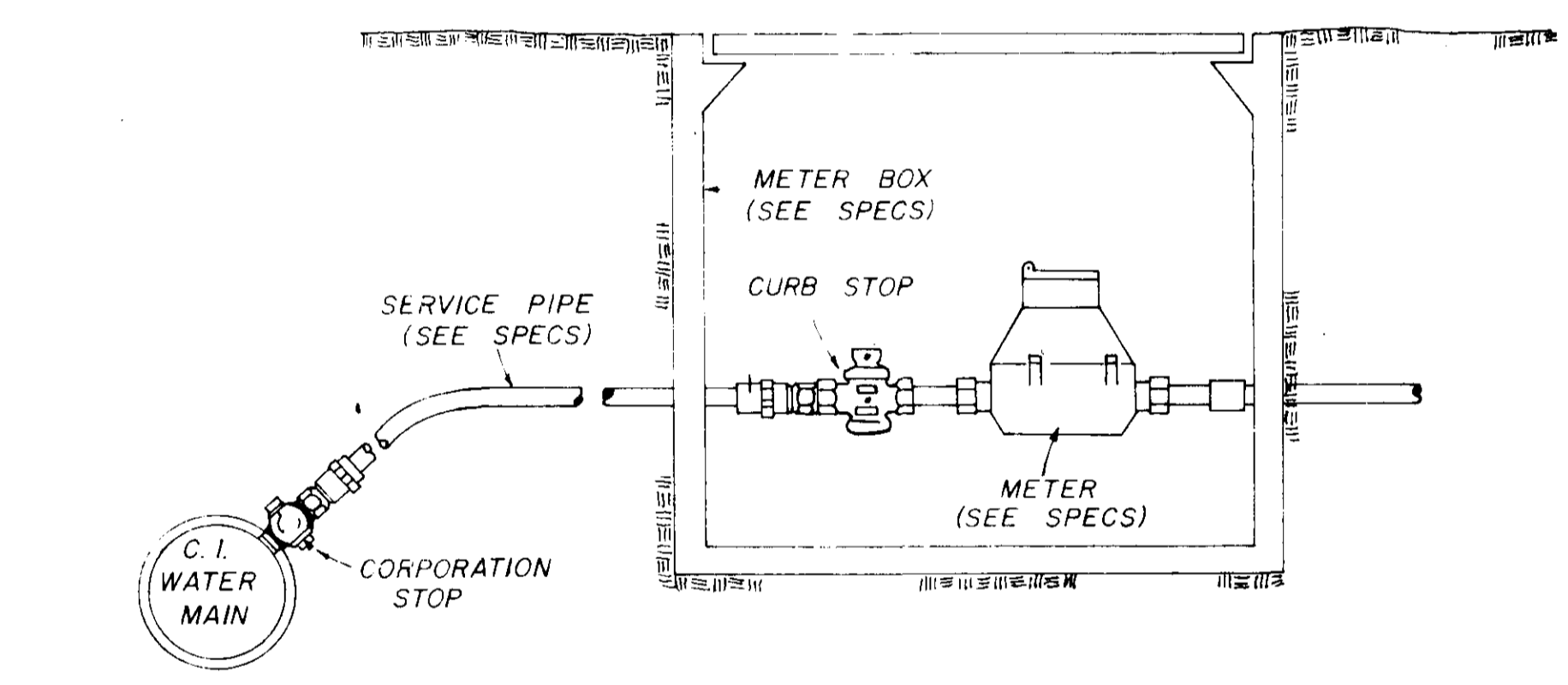


**TYPICAL CASSED CROSSING**

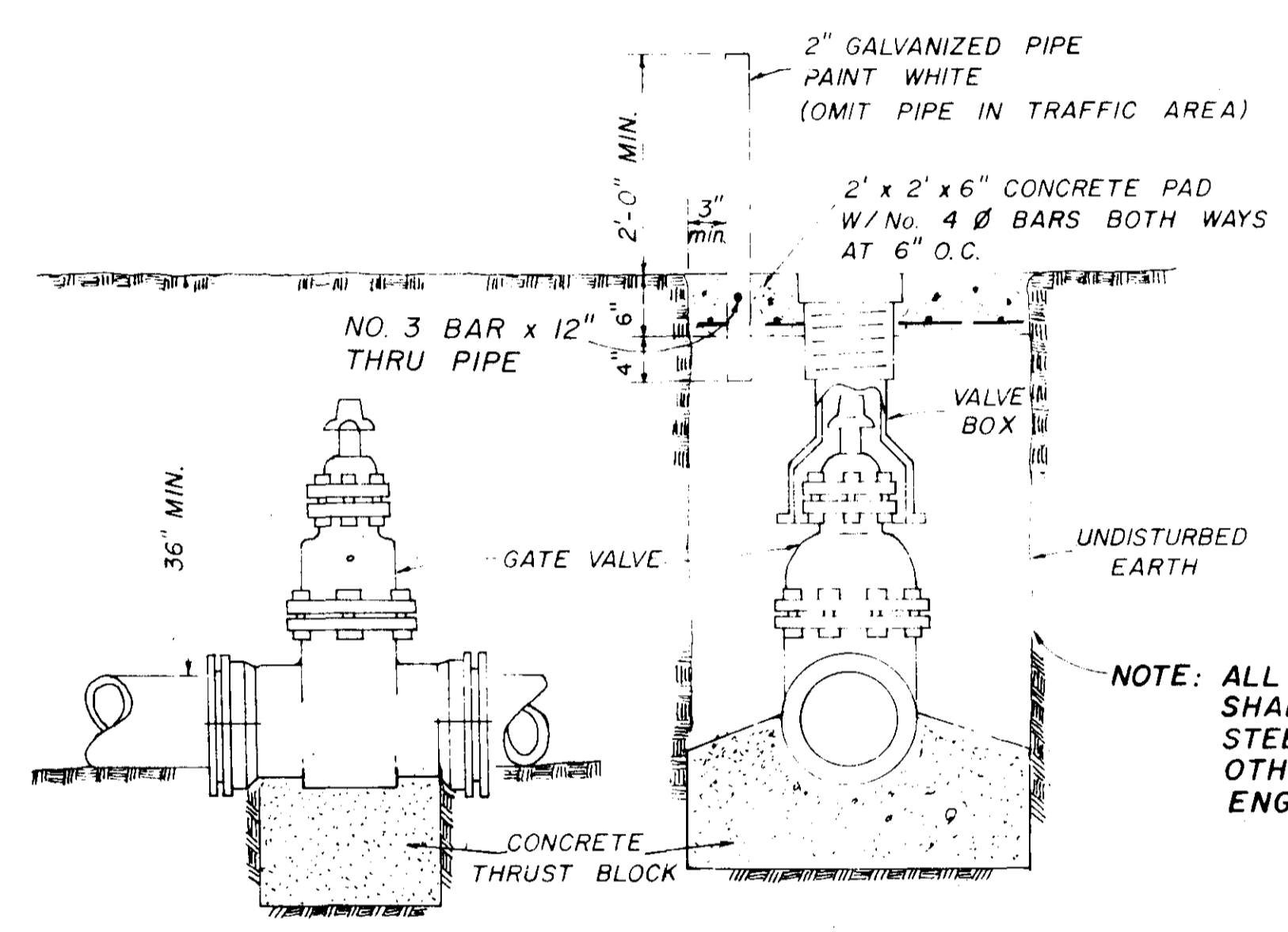
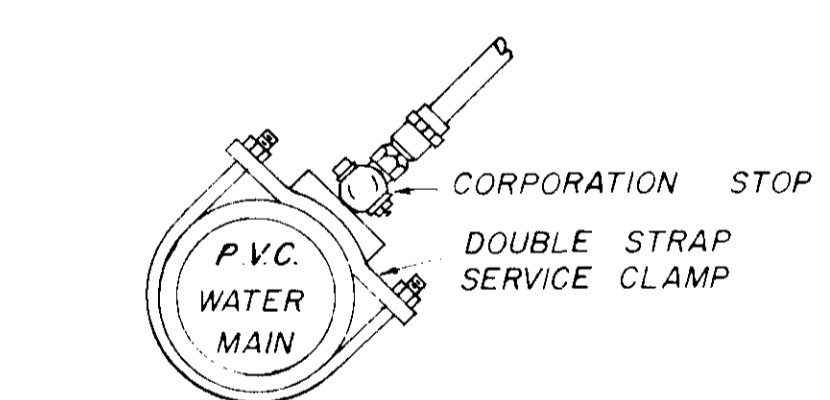
NOTE: COMPENSATION FOR CONCRETE THRUST BLOCKS SHALL BE INCLUDED IN THE UNIT PRICE BID FOR VALVES, FIRE HYDRANTS AND FITTINGS.



**TYPICAL 2" BLOW-OFF DETAIL**



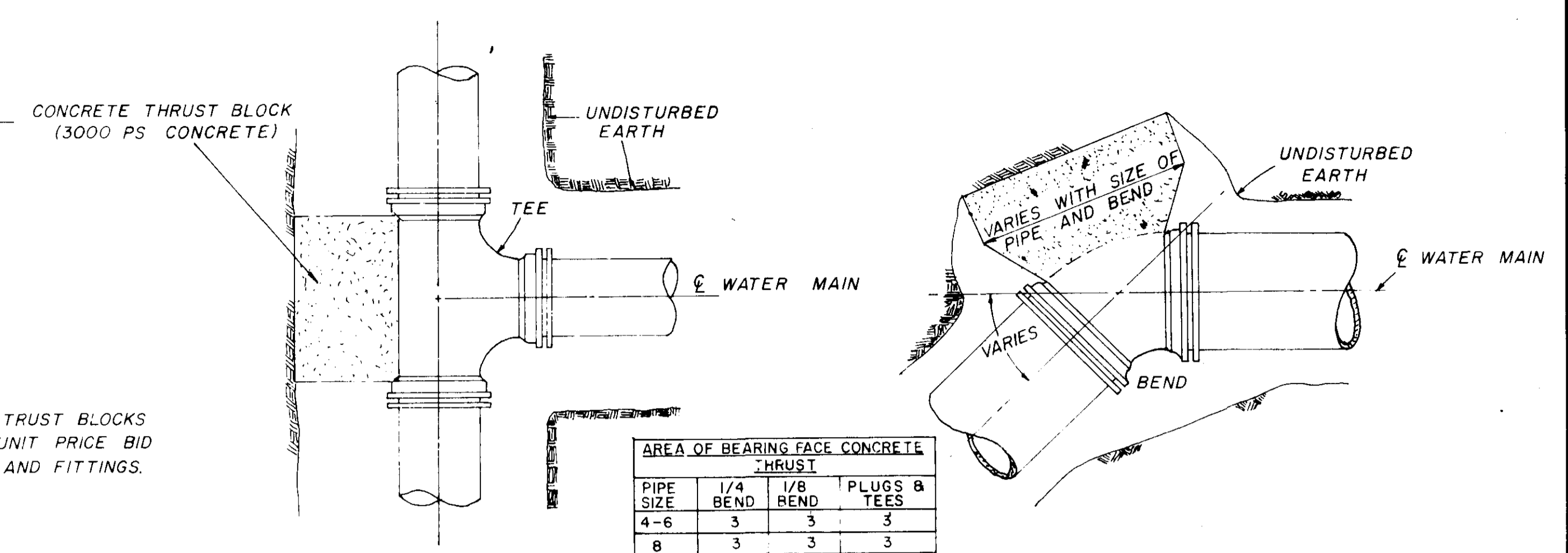
**TYPICAL SERVICE ASSEMBLY**



**ELEVATION SECTION**

**TYPICAL VALVE & BOX**

NOTE: ALL WATER MAIN CONNECTIONS SHALL BE RODDED WITH ALL STEEL RODS (3/4" MIN.) UNLESS OTHERWISE INSTRUCTED BY ENGINEER.

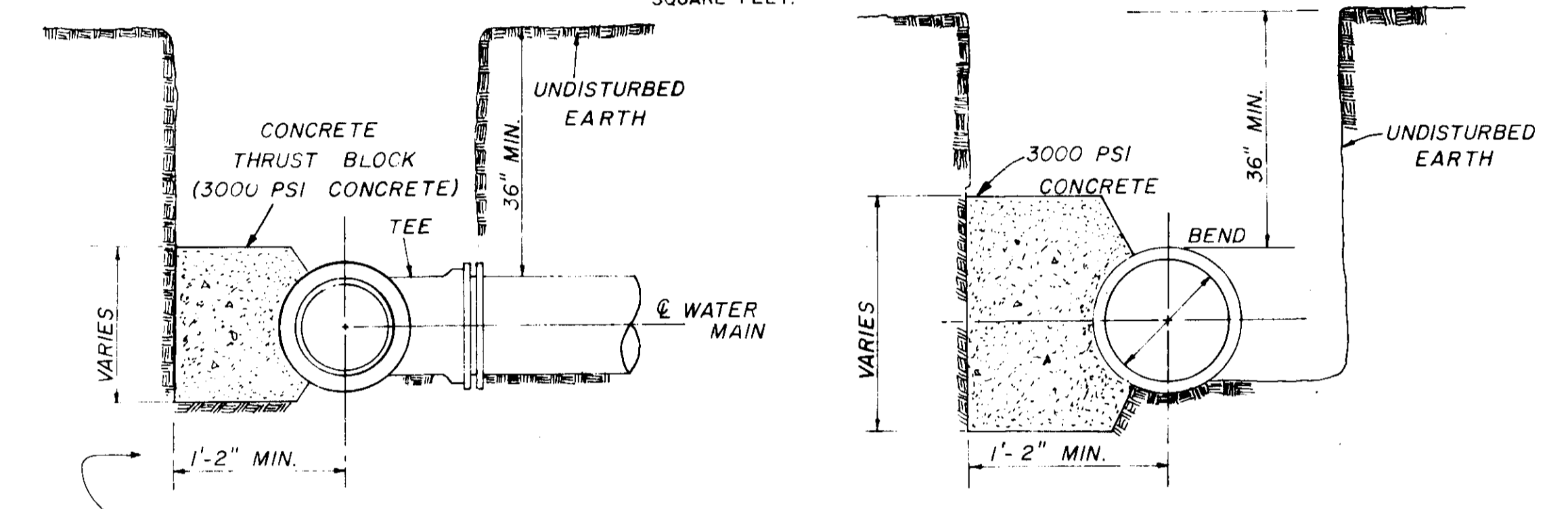


**PLAN**

**PLAN**

PIPE SIZE	1/4 BEND	1/8 BEND	PLUGS & TEES
4-6	3	3	3
8	3	3	3
10	4	3	2
12	6	3	4
16	11	4	7

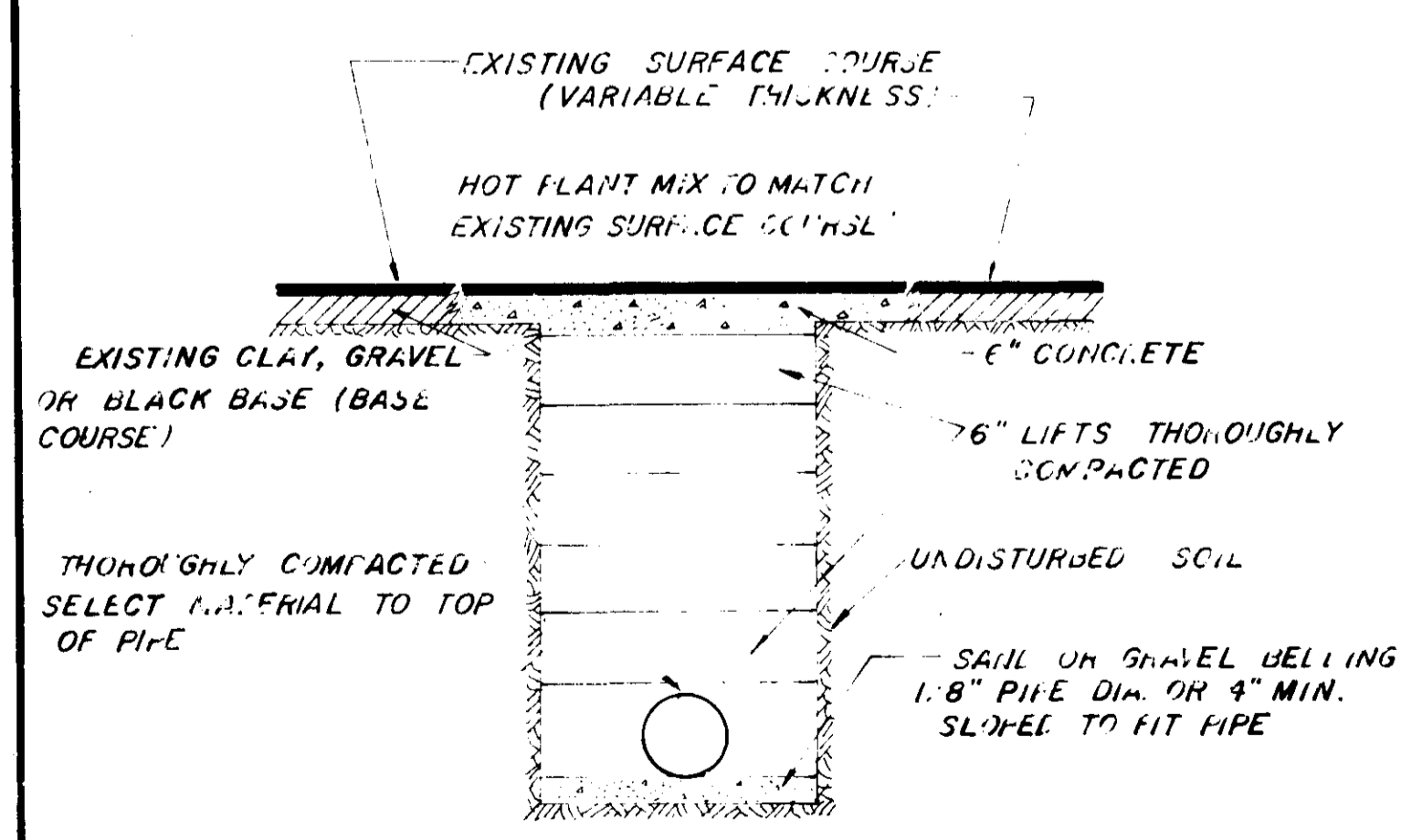
NOTE: AREA OF BEARING FACE IN SQUARE FEET.



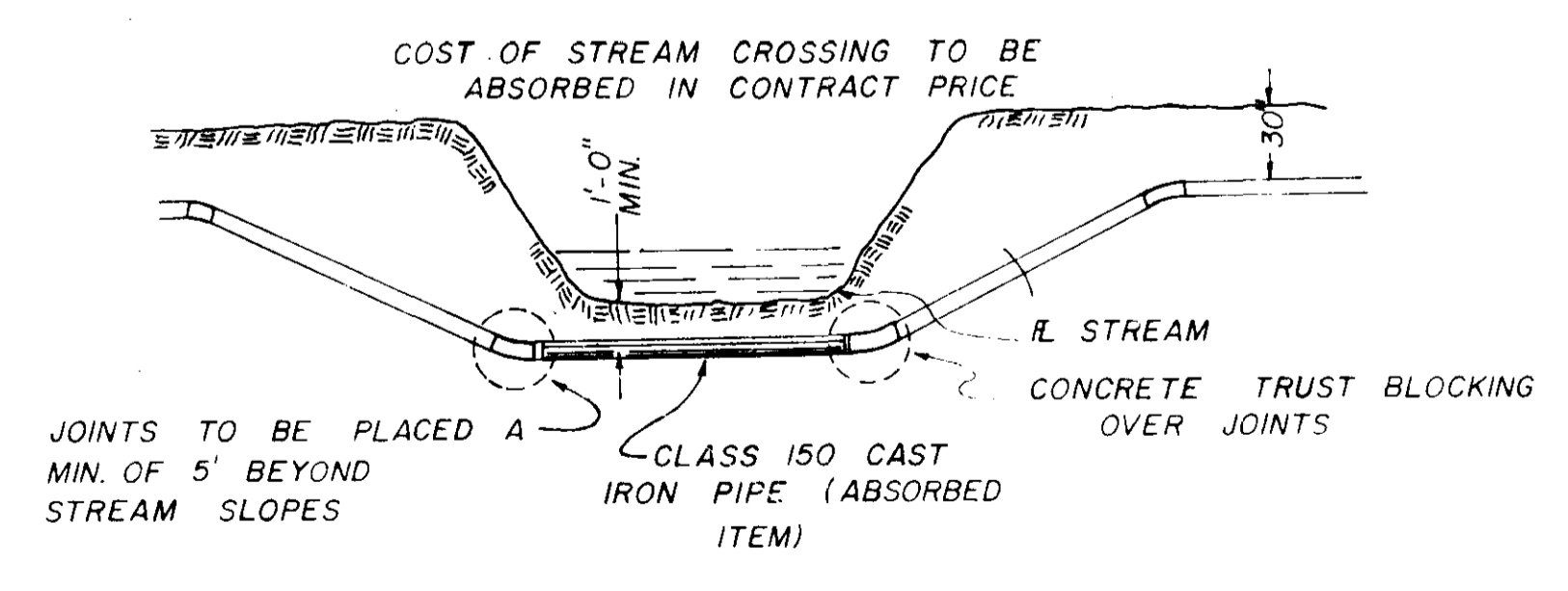
**SECTION**

**SECTION**

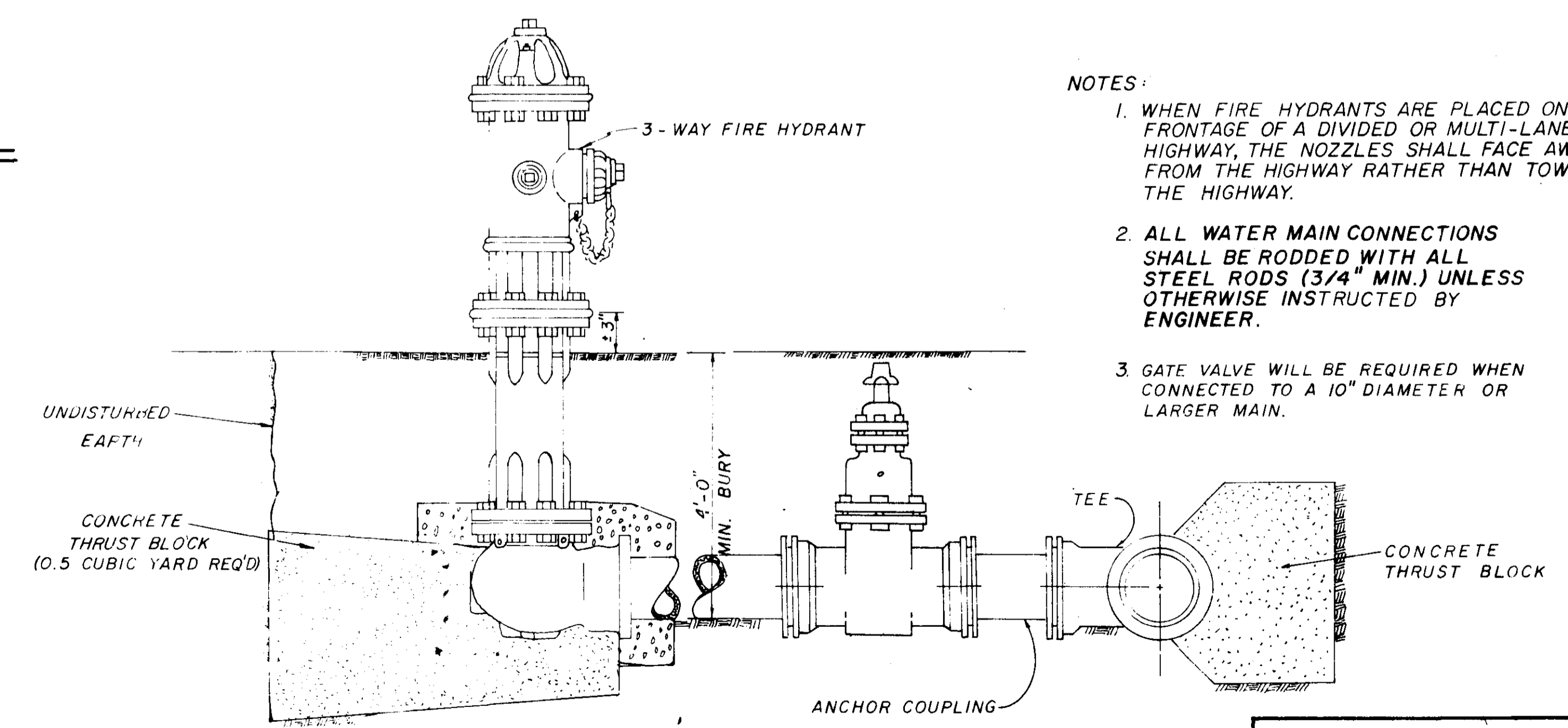
**BLOCKING DETAILS FOR TEES & BENDS**



**STREET REPAIR OF OPEN CUT**



**TYPICAL STREAM CROSSING**



**TYPICAL FIRE HYDRANT**

- NOTES:
1. WHEN FIRE HYDRANTS ARE PLACED ON THE FRONTAGE OF A DIVIDED OR MULTI-LANE HIGHWAY, THE NOZZLES SHALL FACE AWAY FROM THE HIGHWAY RATHER THAN TOWARD THE HIGHWAY.
  2. ALL WATER MAIN CONNECTIONS SHALL BE RODDED WITH ALL STEEL RODS (3/4" MIN.) UNLESS OTHERWISE INSTRUCTED BY ENGINEER.
  3. GATE VALVE WILL BE REQUIRED WHEN CONNECTED TO A 10" DIAMETER OR LARGER MAIN.

CITY OF RIDGELAND, MISSISSIPPI

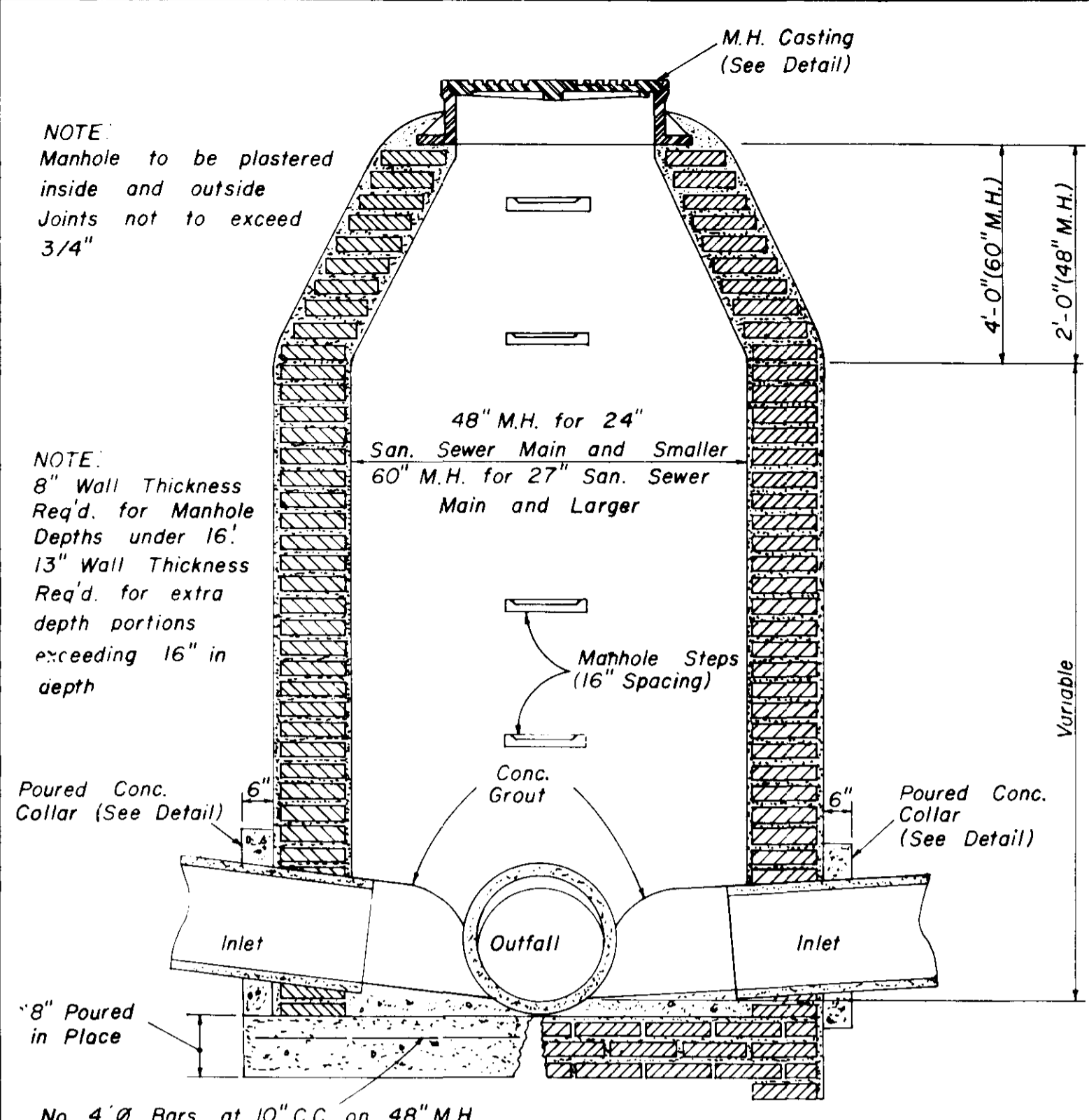
BRAME ROAD WATER & SEWER WATER STANDARD DETAILS

CDBG # 9-1129-169-PF-01

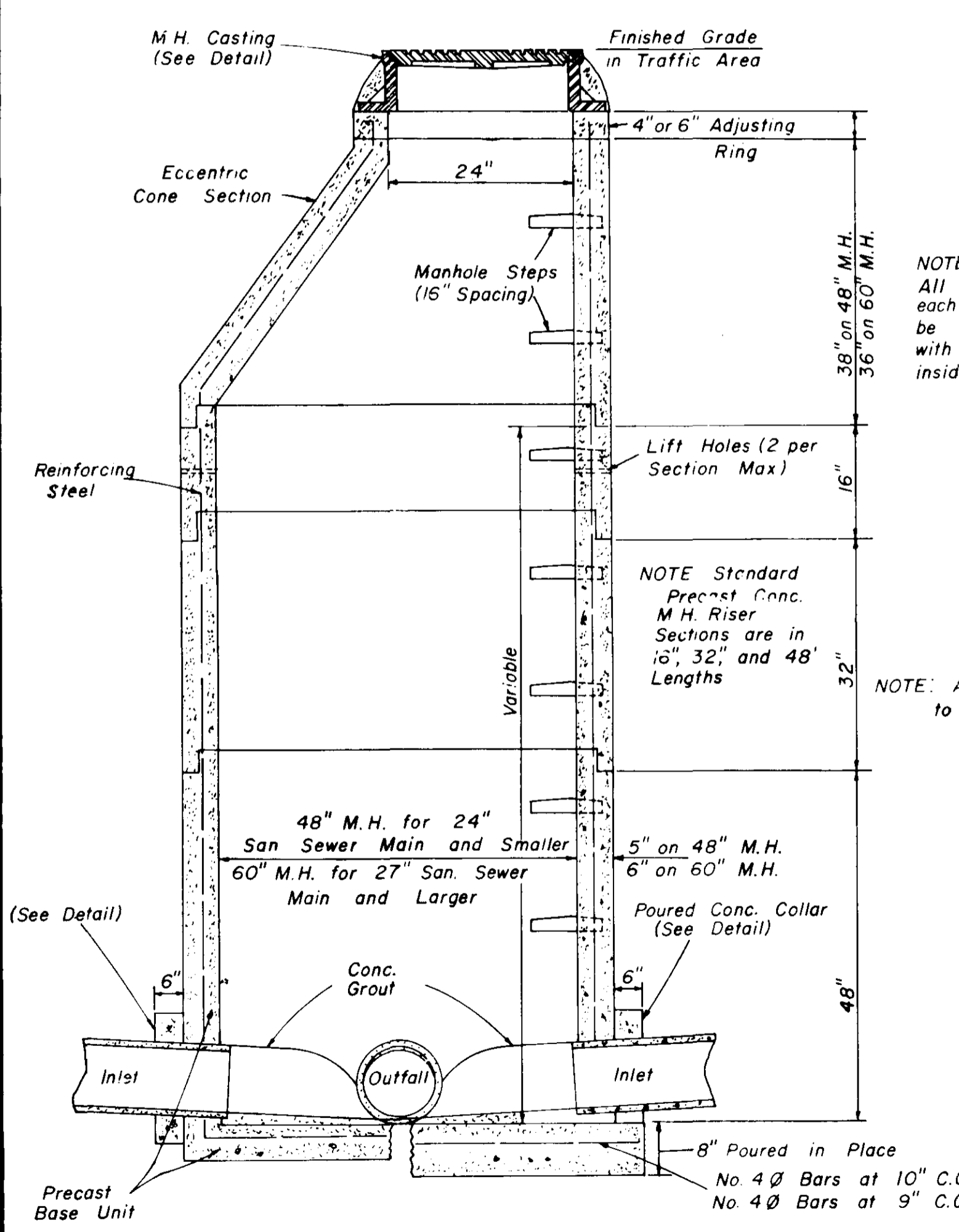
JOE A. WAGGONER  
Civil Engineer - Brandon/Jackson, Miss.

DRAWN BY: H.J.	DATE: OCT. 1982	7 of 9
CHECKED BY: J.A.W.	SCALE: N.T.S.	

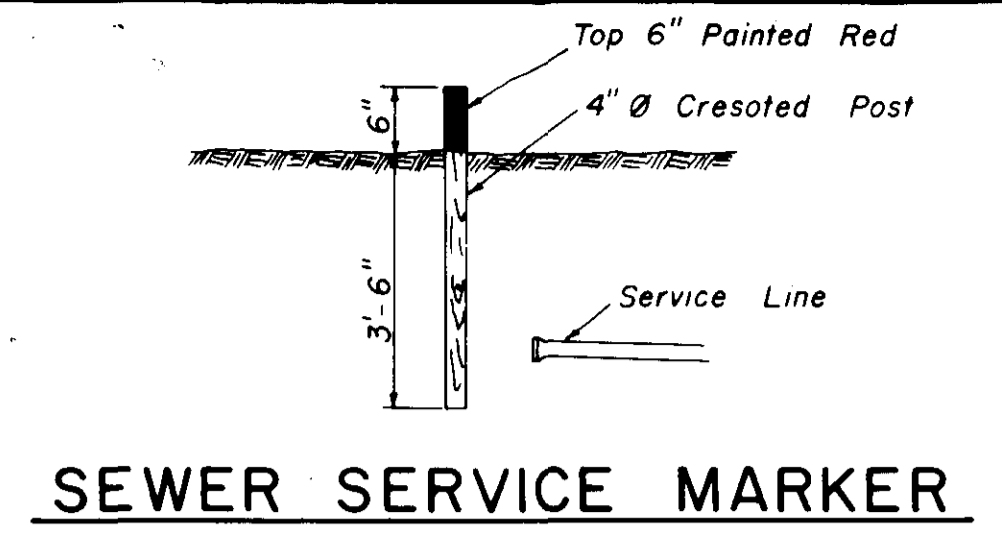




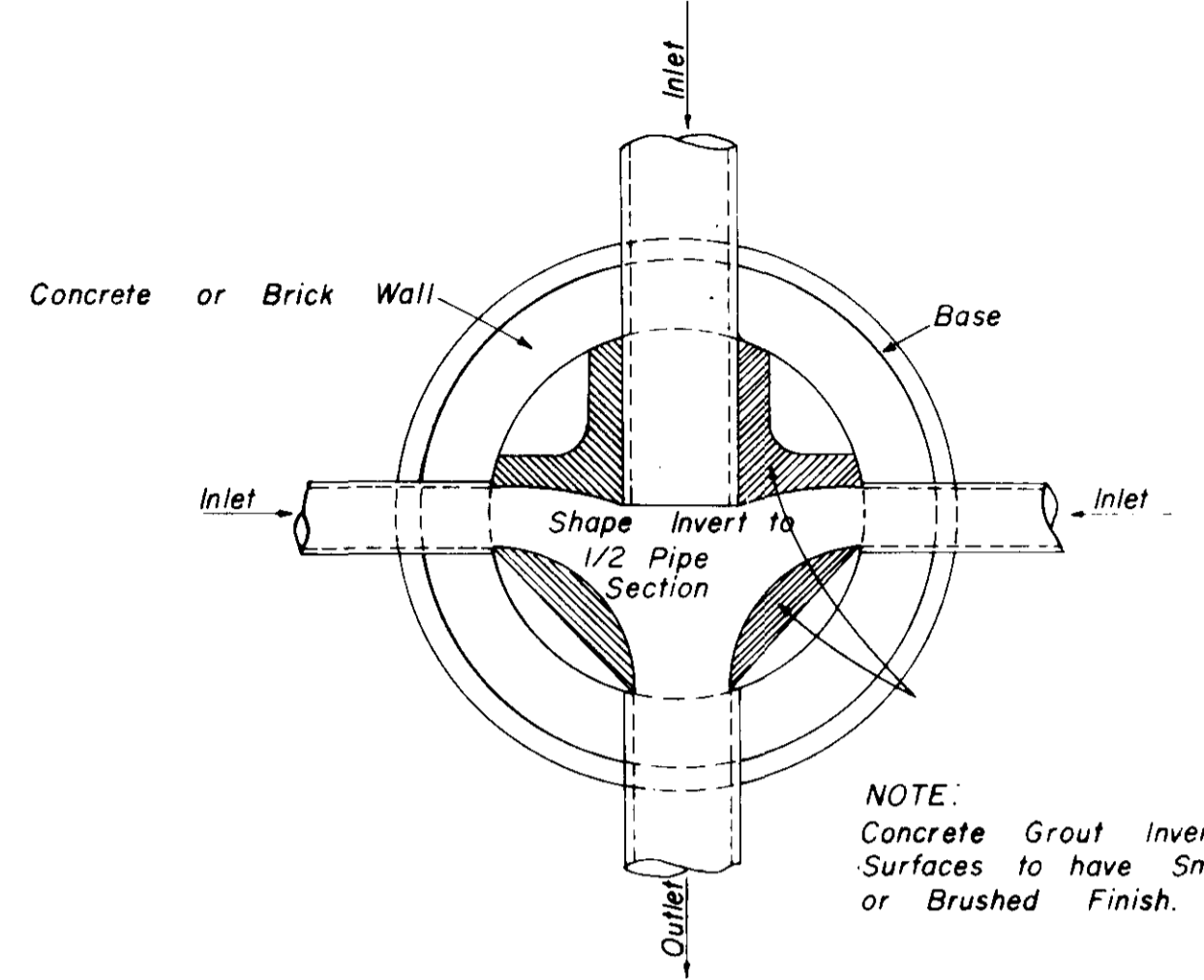
SECTION STANDARD BRICK MANHOLE



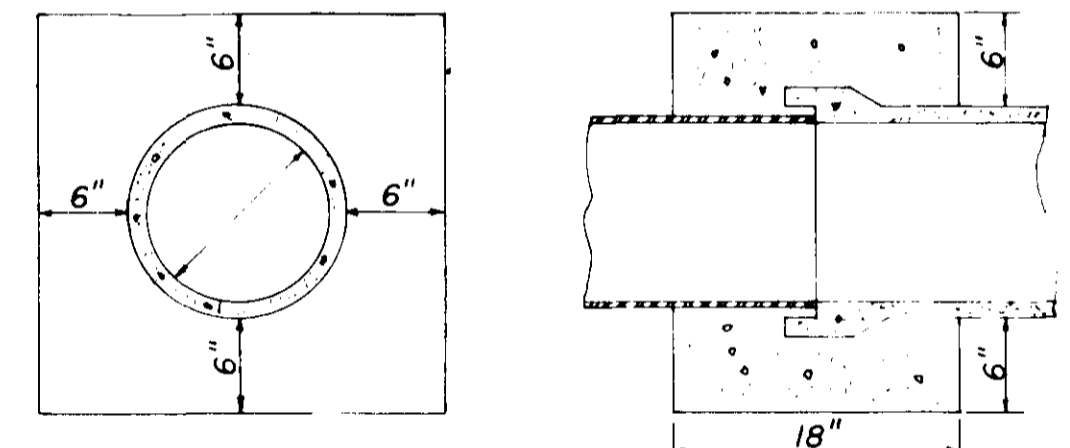
SECTION PRECAST CONCRETE MANHOLE



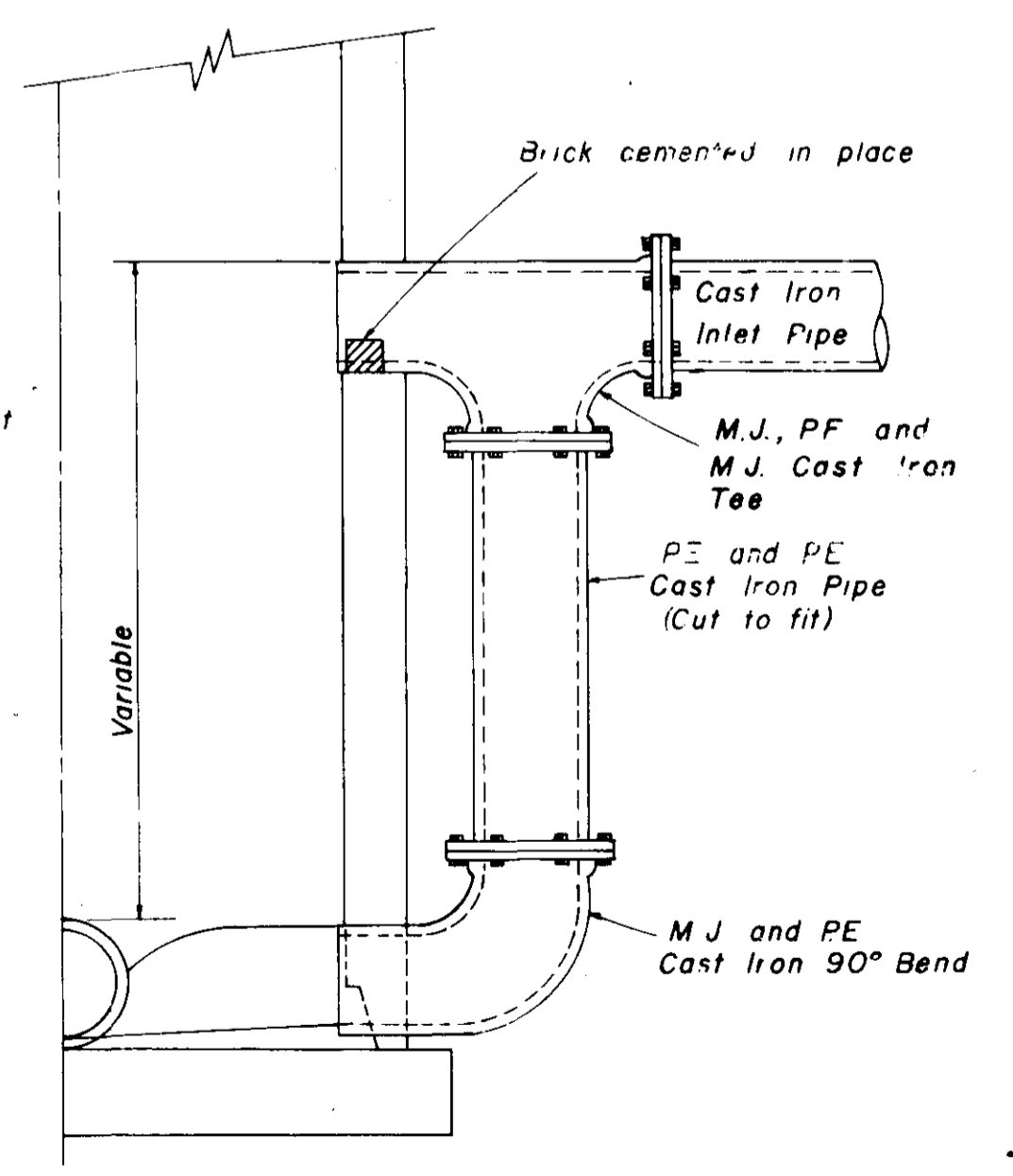
SEWER SERVICE MARKER



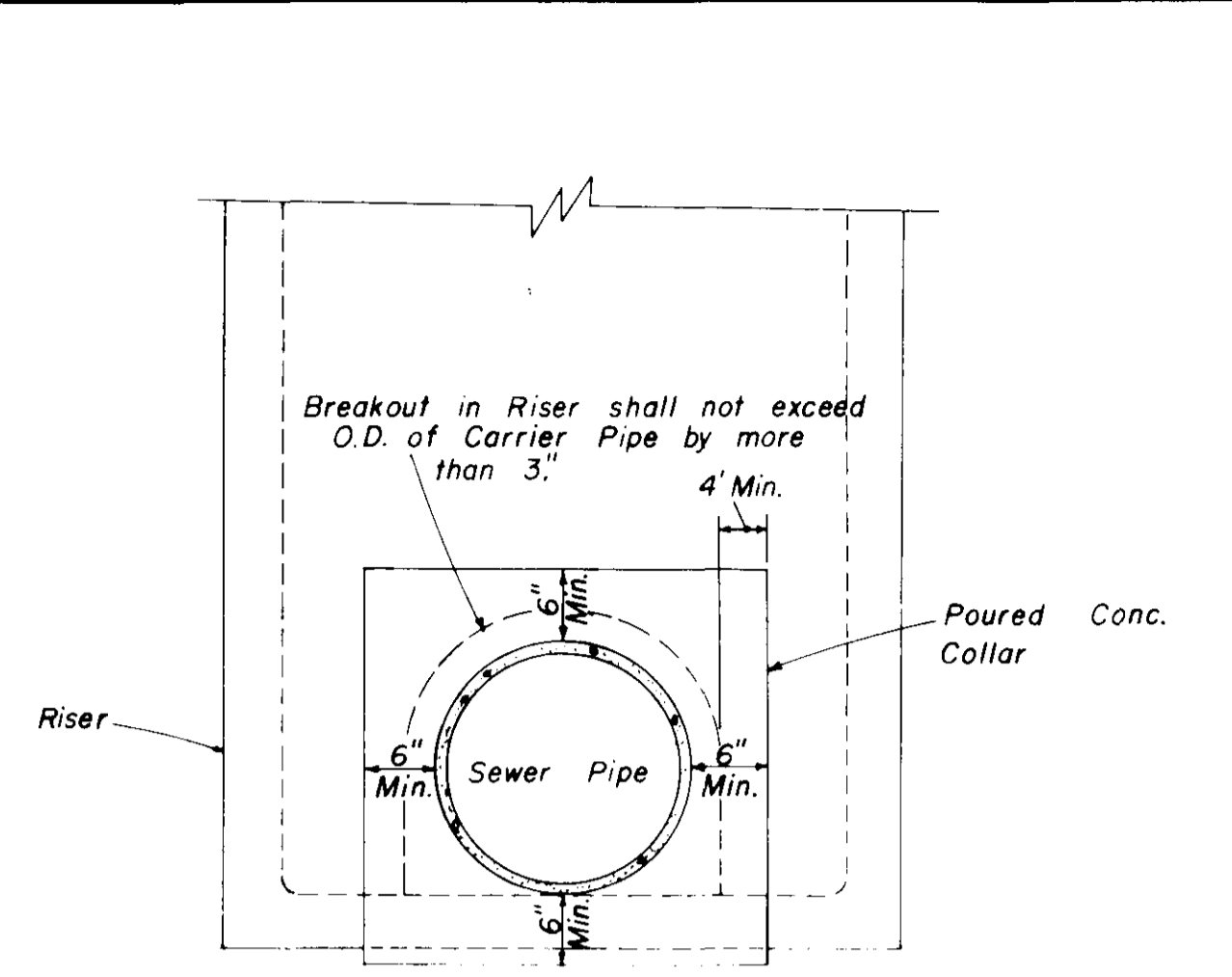
PLAN OF MANHOLE FLOW CHANNELS



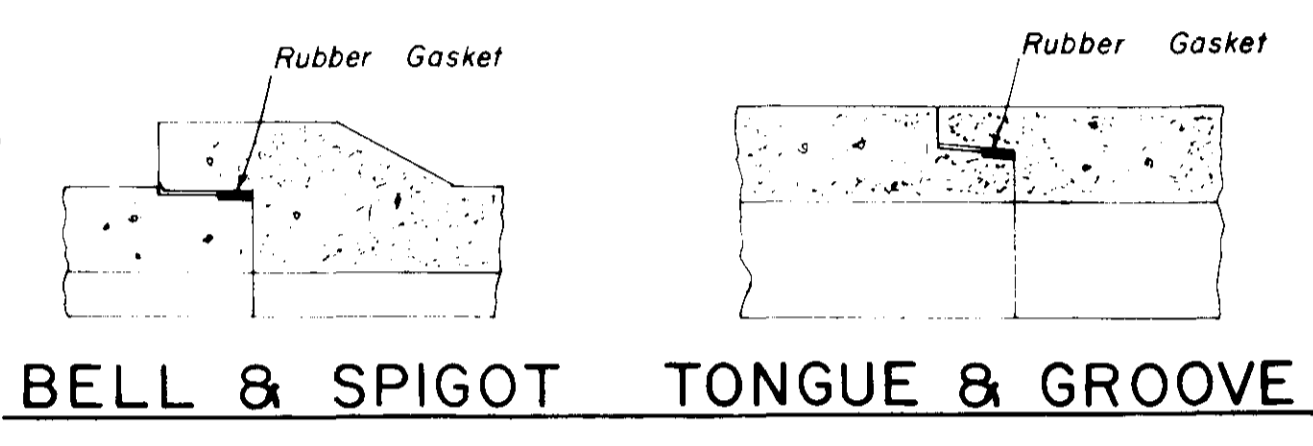
ELEVATION SECTION CONCRETE COLLAR DETAILS



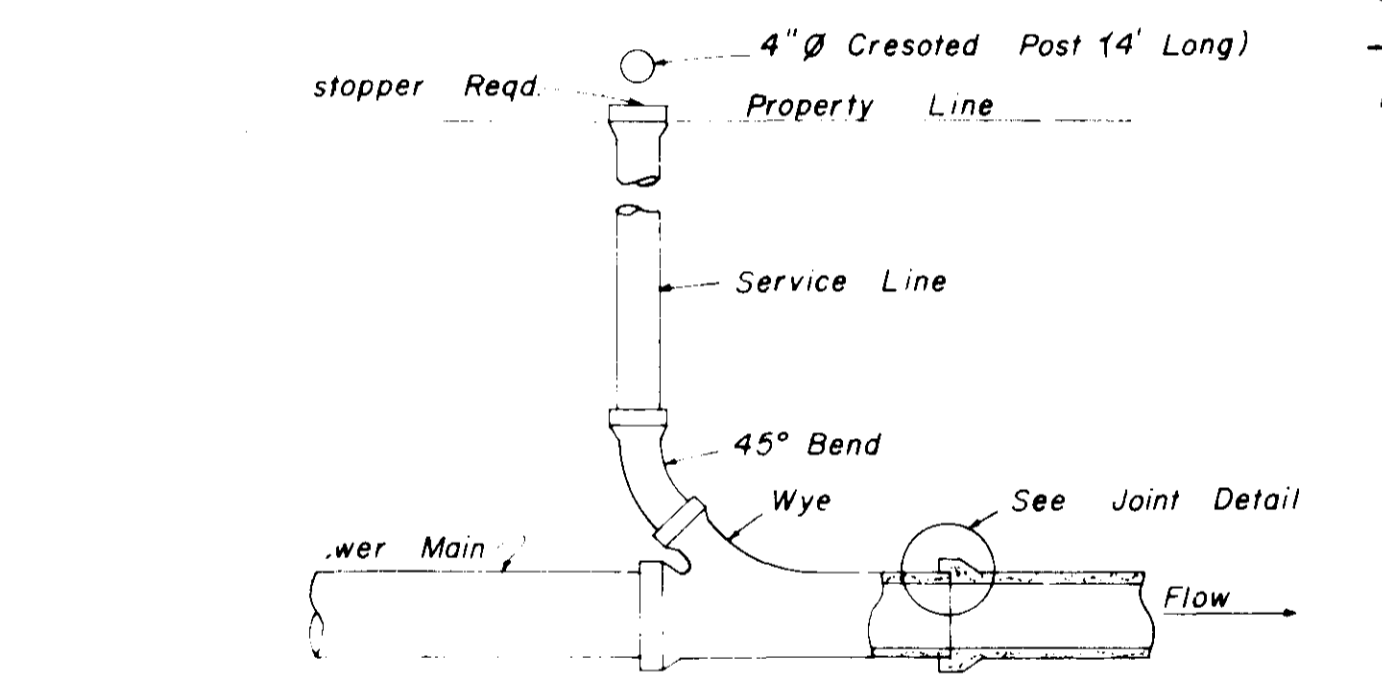
HALF SECTION MANHOLE WITH DROP CONNECTION



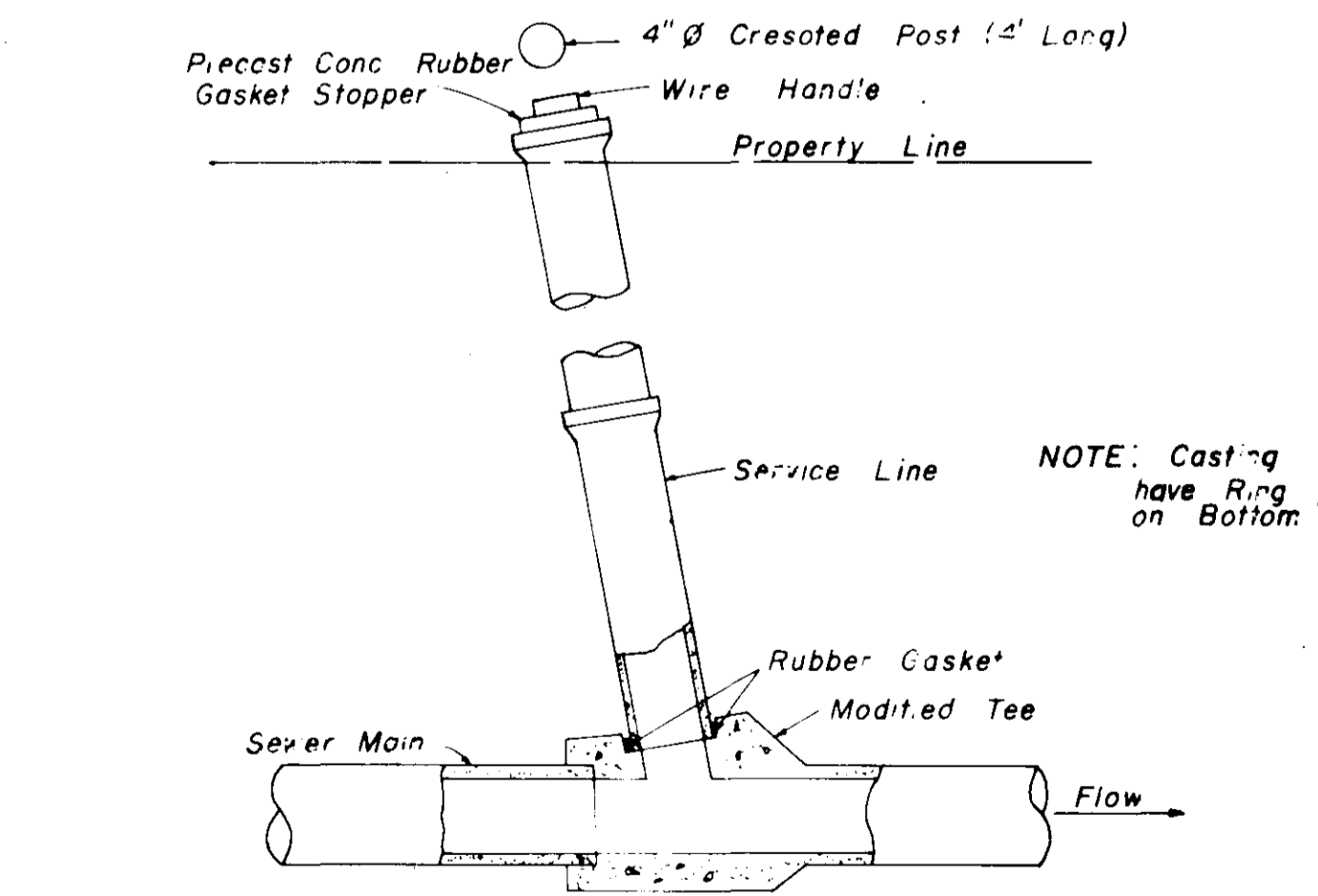
ELEVATION CONCRETE COLLAR AT MANHOLE CONNECTION



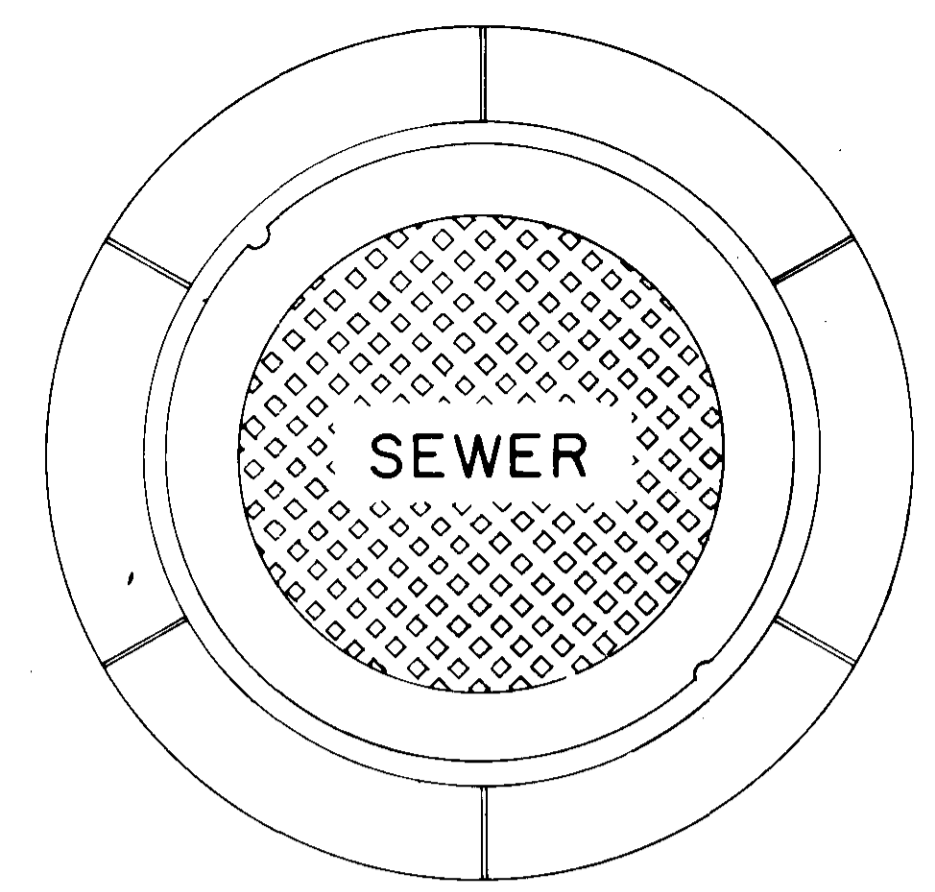
BELL & SPIGOT TONGUE & GROOVE JOINT DETAILS



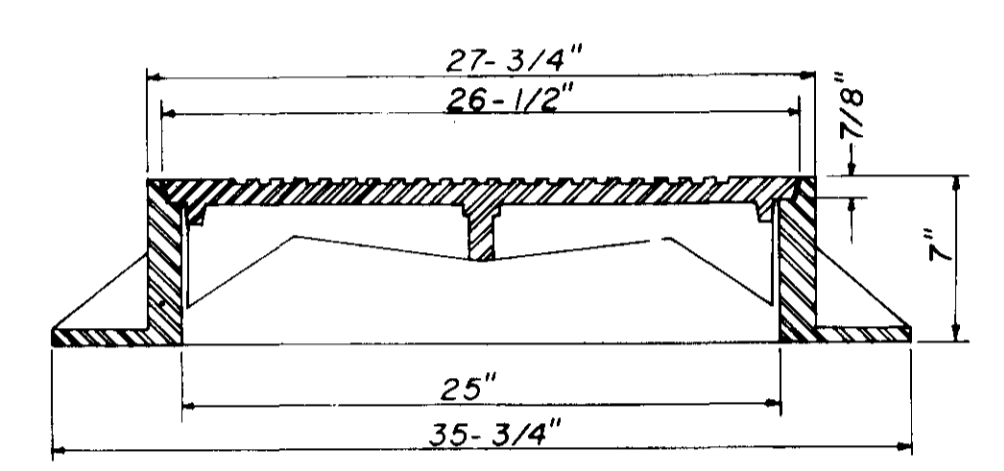
TYPICAL SERVICE TO PROPERTY LINE WITH WYE JOINT



TYPICAL SERVICE TO PROPERTY LINE WITH MODIFIED TEE JOINT

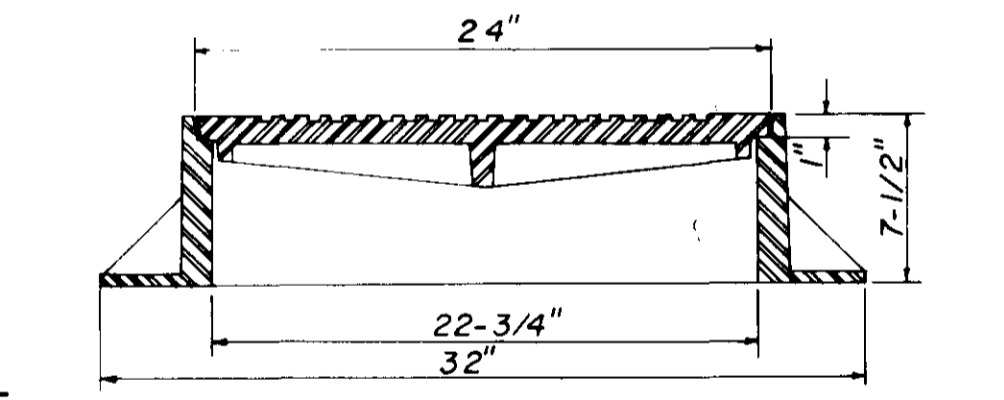


PLAN MANHOLE CASTING



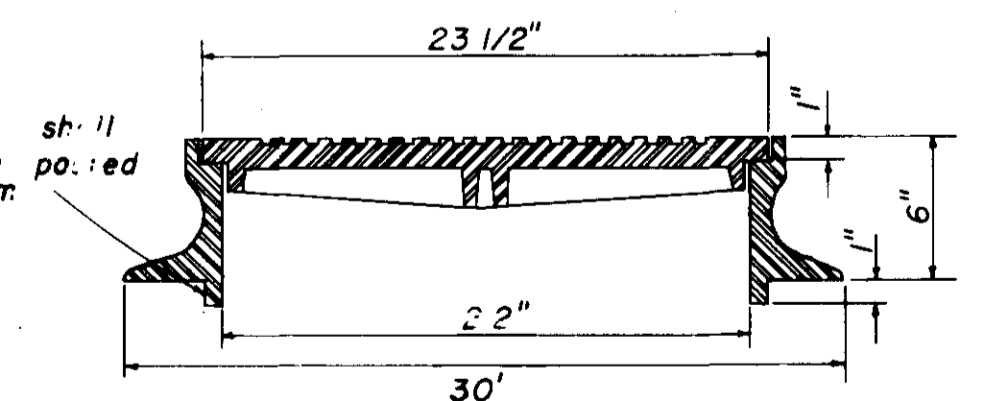
SECTION TYPE "A" MANHOLE CASTING

NOTE: 1. Use Type "A" Manhole Casting in Street R.O.W.  
2. Use Harper No. 2, City of Jackson Standard (420 lbs.) or Vulcan No. VM-15, City of Jackson Standard (420 lbs.)



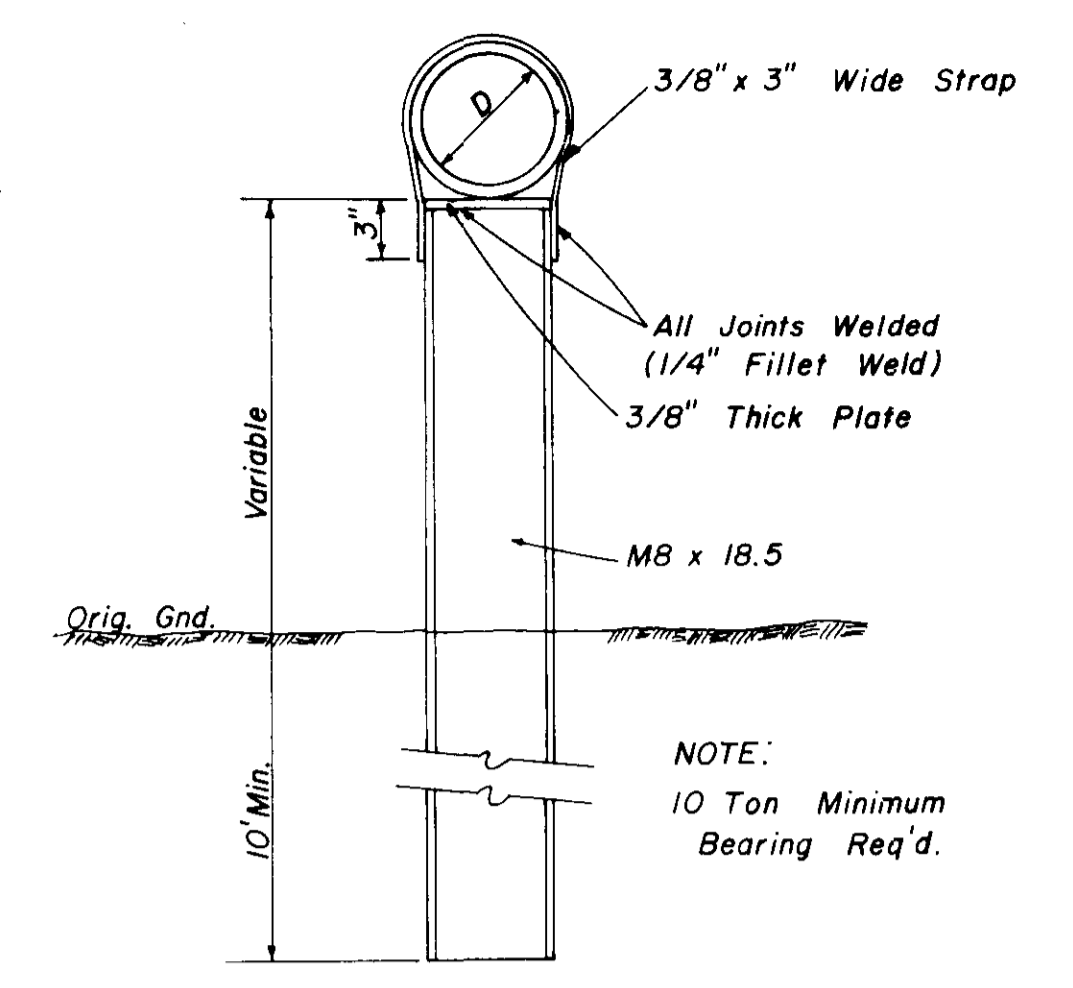
SECTION TYPE "B" MANHOLE CASTING

NOTE: 1. Use Type "B" Manhole Casting for any Manhole not in a Street R.O.W.  
2. Use Harper No. 1 (M.S.P.E. Standard) Light Weight (330 lbs.) or Vulcan No. VM-17 (300 lbs.) or Opelika Foundry No. C-2-1 (325 lbs.)

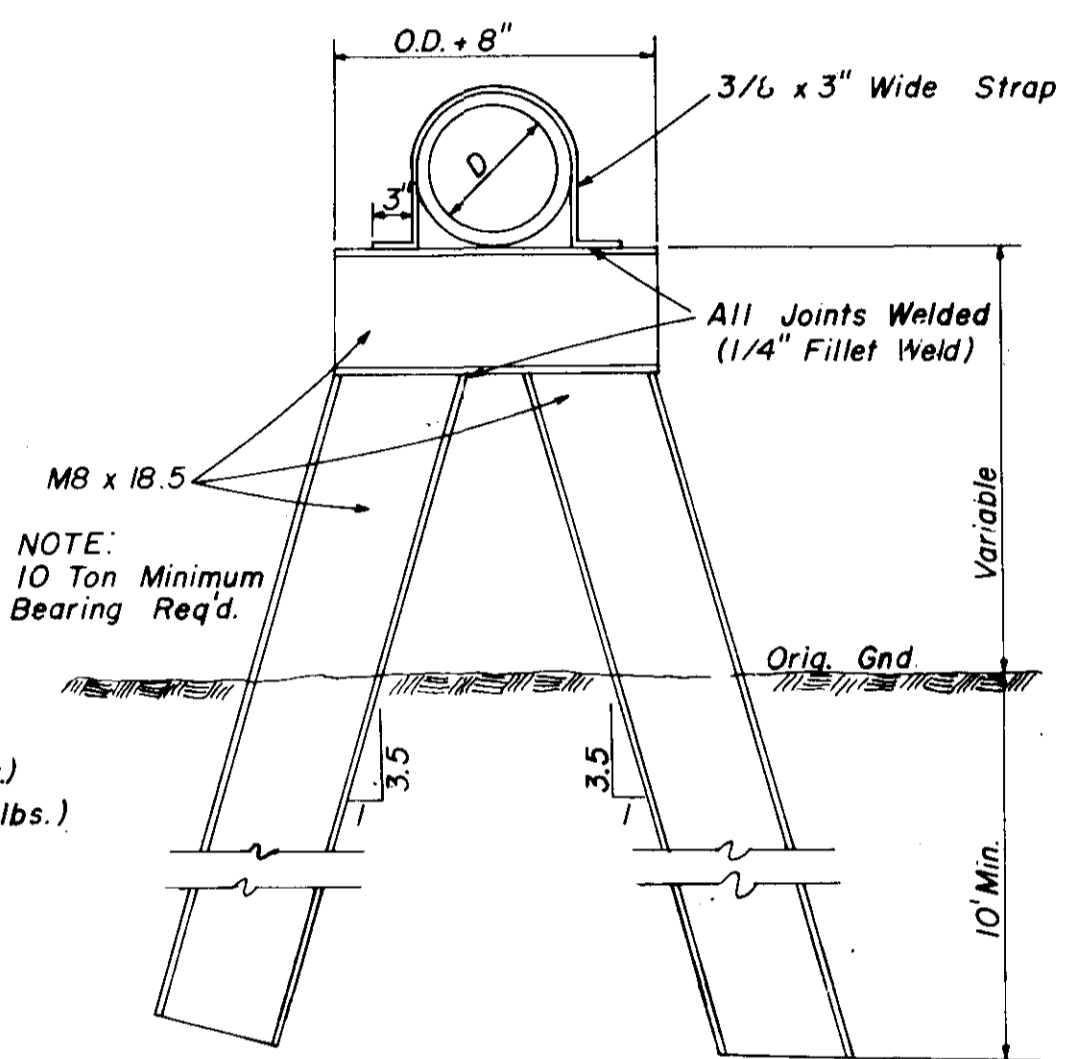


SECTION TYPE "C" MANHOLE CASTING

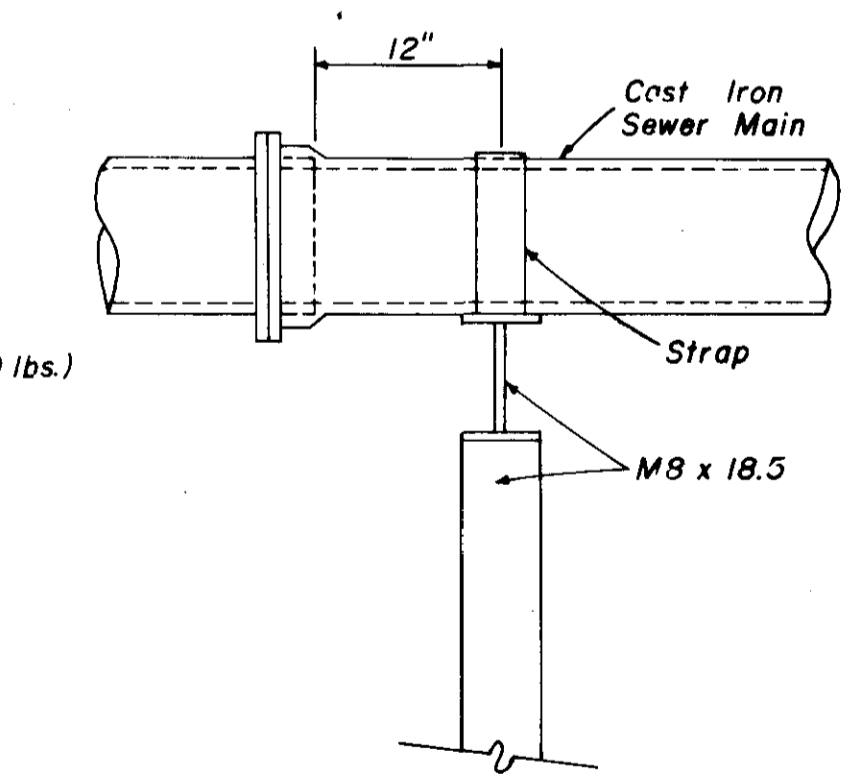
NOTE: 1. Use Type "C" Manhole Casting for Precast Manhole not in a Street R.O.W.  
2. Use Harper No. 8 (330 lbs.) or Neenah No. R-1779 (300 lbs.) or Vulcan No. VM-7 (330 lbs.)



DETAIL TYPE "A" PIER

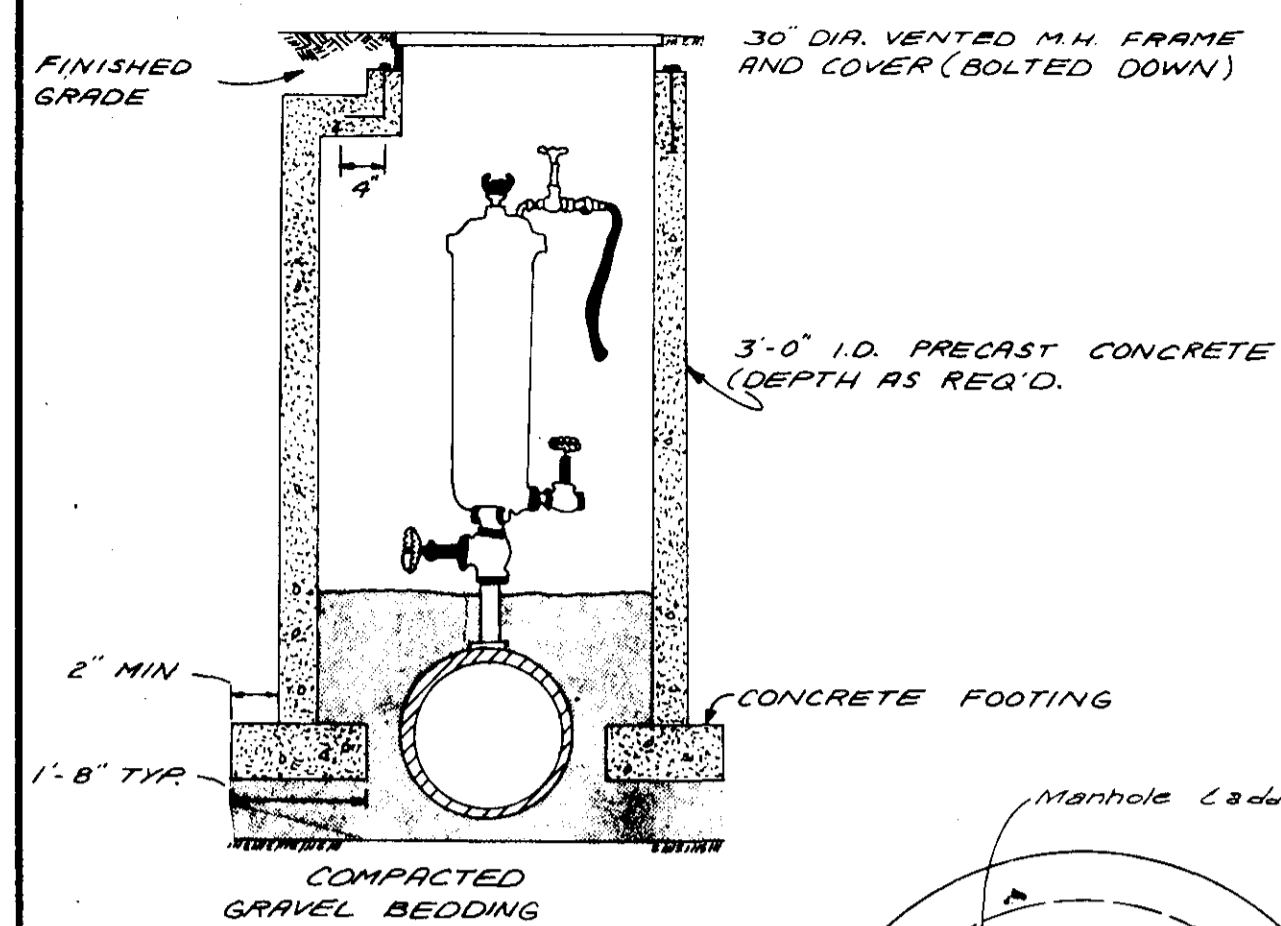


DETAIL TYPE "B" PIER

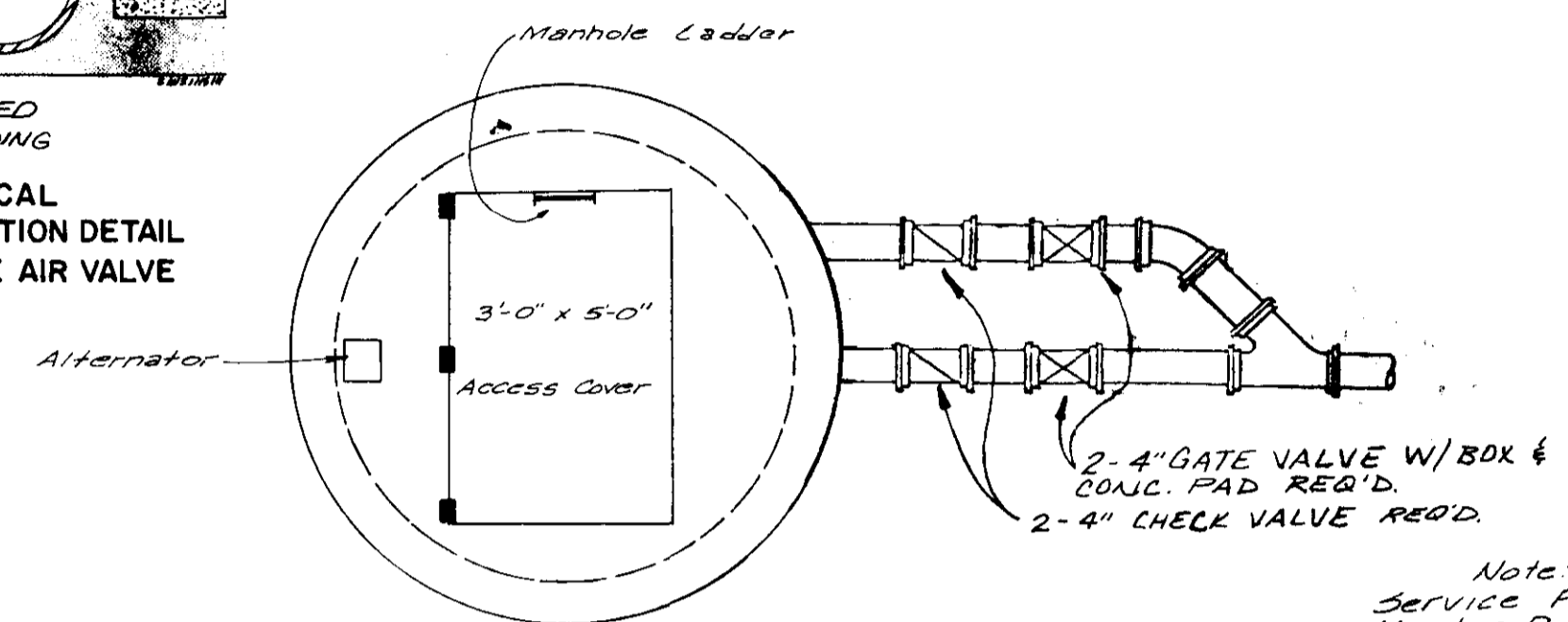


SIDE ELEVATION TYPE "B" PIER

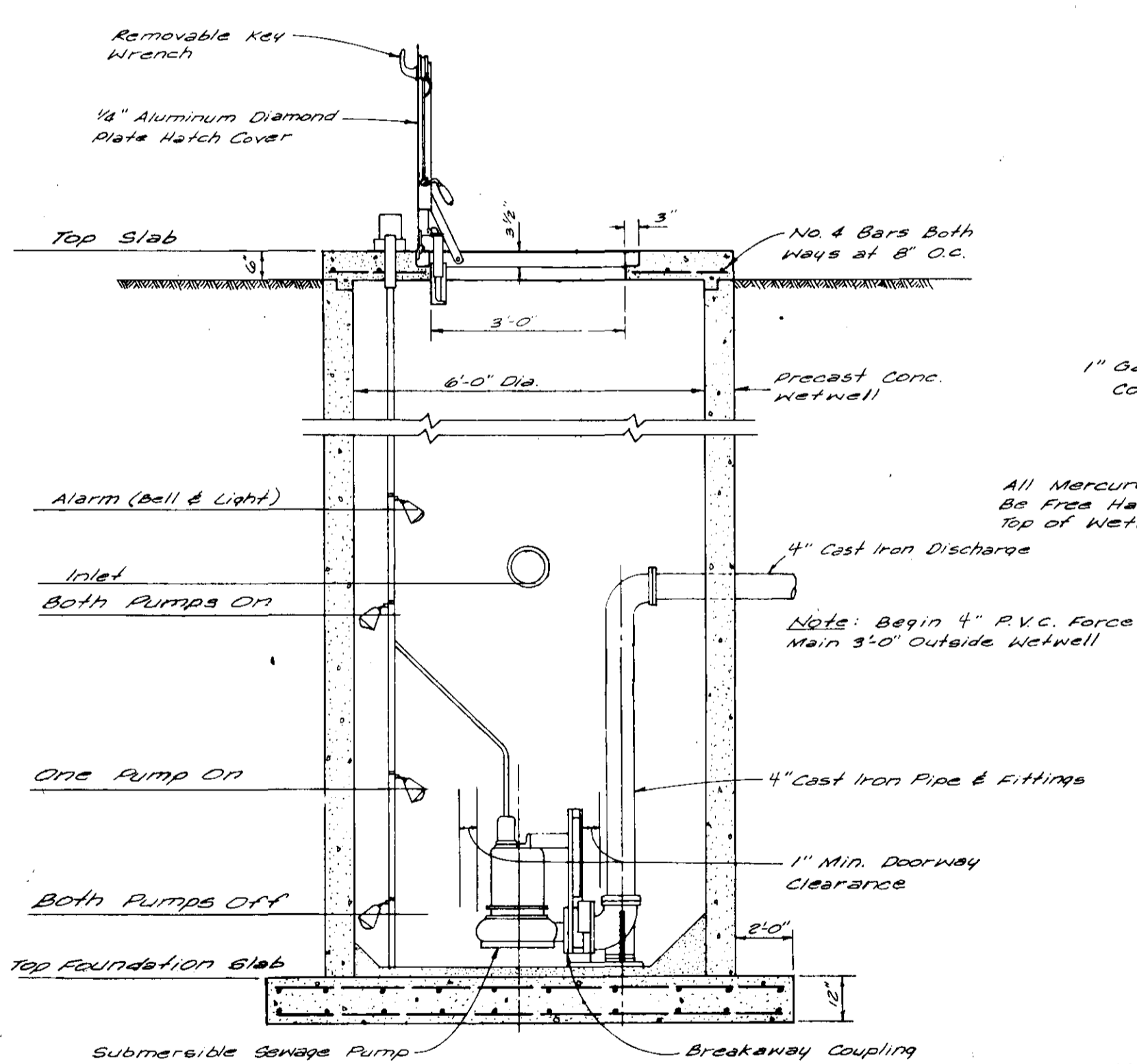
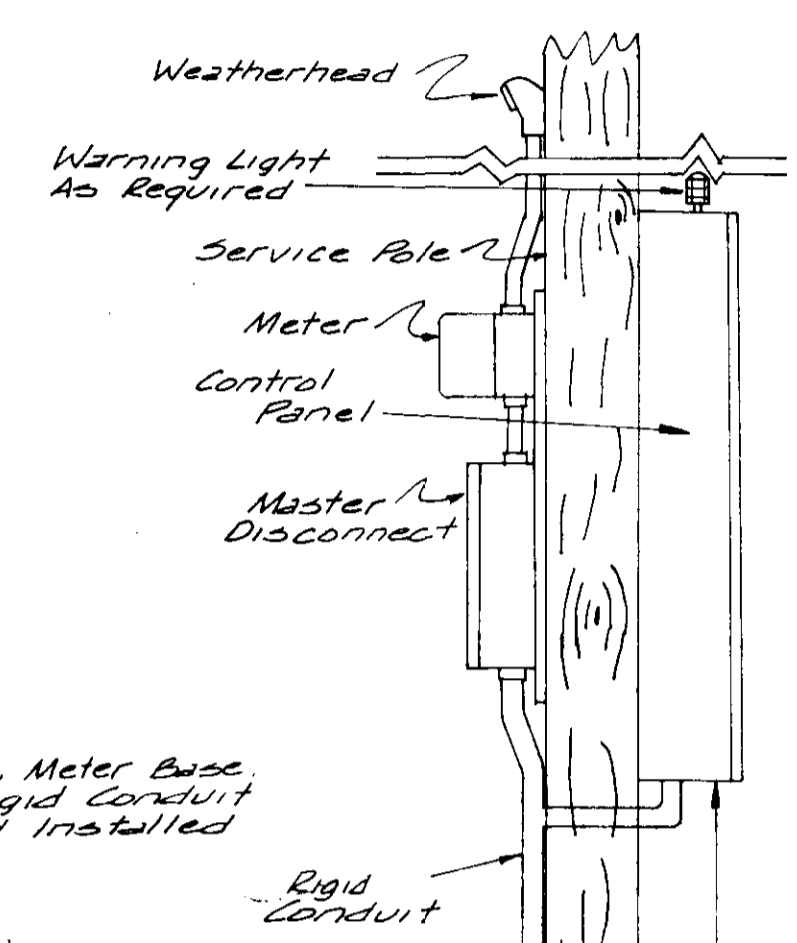
CITY OF RIDGELAND, MISSISSIPPI	
BRAME ROAD WATER & SEWER SEWER STANDARD DETAILS	
CDBG # 9-1129-169-PF-01	
WAGGONER ENGINEERING INC. Consulting Engineers - Jackson / Brandon, Ms.	
DRAWN BY: J.A.W.	DATE: AS SHOWN
CHECKED BY: J.A.W.	SCALE: AS SHOWN
8 OF 9	



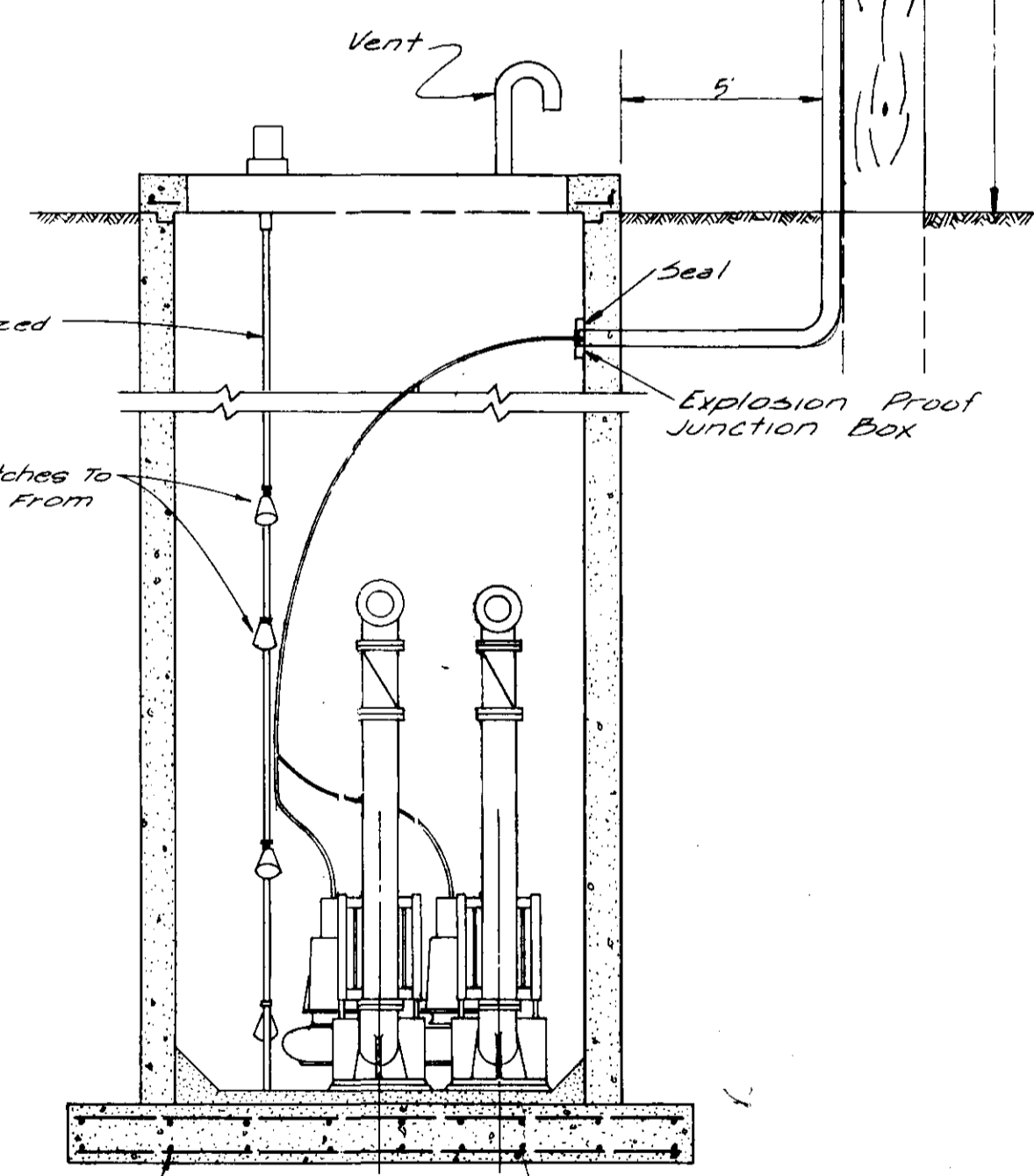
TYPICAL  
PIT INSTALLATION DETAIL  
FOR SEWAGE AIR VALVE



PLAN  
N.T.S.



ELEVATION  
N.T.S.



ELEVATION  
N.T.S.

Top Foundation Slab	Both Pumps Off	One Pump On	Both Pumps On	Alarm	Top Slab	Inlet
327.5	328.0	335.0	337.0	338.5	346.0	337.36

CITY OF RIDGELAND, MISSISSIPPI  
 BRAME ROAD WATER & SEWER  
 PUMP STA. DETAILS

CBS NO. 9-1129-169-PF-0

WAGGONER ENGINEERING INC.  
 Consulting Engineers Jackson, Mississippi

DRAWN BY: DATE: 10-10-00 SHEET NO. 10

CHECKED BY: SCALE: AS SHOWN

REVISION