

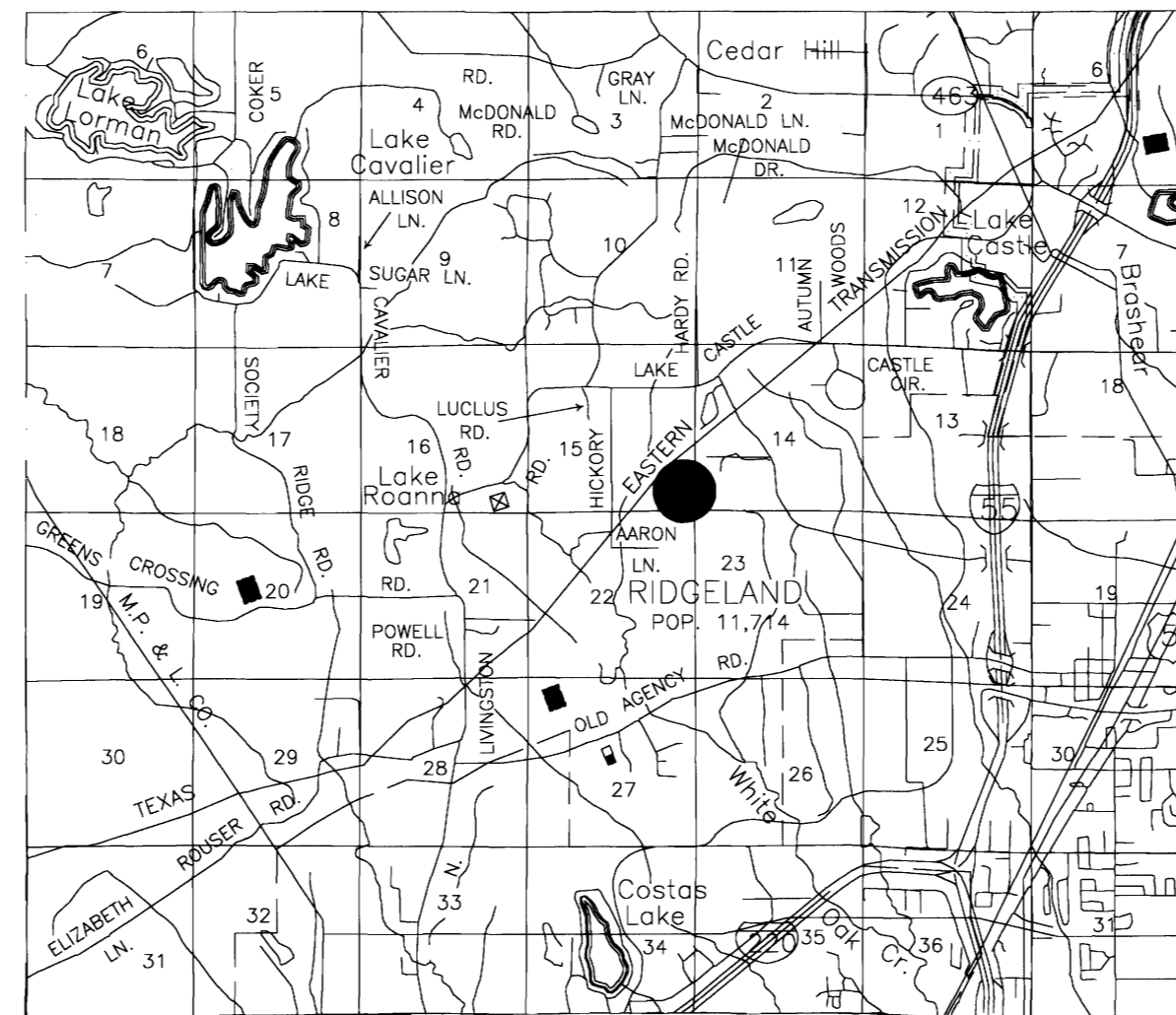
AS-BUILT PLANS
FOR
BRIDGEWATER SEVEN

A DEVELOPMENT OF 184 LIMITED PARTNERSHIP
 274 COMMERCE PARK DRIVE, SUITE A
 RIDGELAND, MS 39157

MADISON COUNTY, MISSISSIPPI

SHEET INDEX

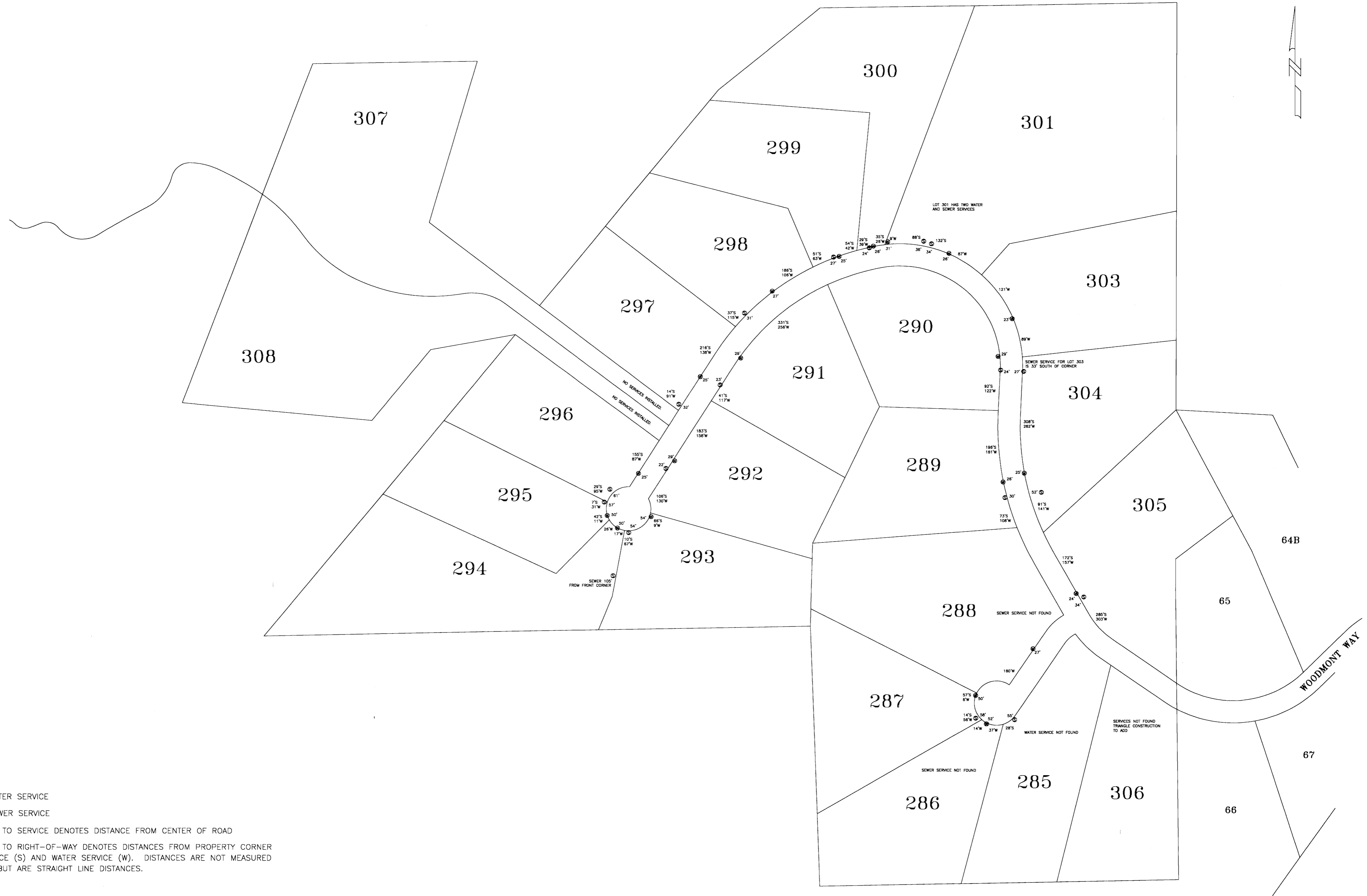
- 1 COVER
- 2 WATER AND SEWER SERVICE LOCATIONS
- 3 OVERALL SUBDIVISION LAYOUT (ALL PHASES)
- 4 STORM DRAINAGE LAYOUT
- 5 WATER AND SEWER LAYOUT
- 6 PLAN/PROFILE WOODMONT WAY - B.O.P. TO 24+00
- 7 PLAN/PROFILE WOODMONT WAY - 24+00 TO E.O.P.
- 8 PLAN/PROFILE CUL-DE-SAC - B.O.P. TO E.O.P.
- 9 TYPICAL SECTIONS
- 10 MISCELLANEOUS DETAILS
- 11 WATER DETAILS
- 12 SEWER DETAILS



● DENOTES PROJECT LOCATION

BANKS ENGINEERING & SURVEYING, INC.

108 AMERICAN WAY * MADISON, MS 39110
 OFFICE (601) 853-2311 * FAX (601) 853-3896



(W) DENOTES WATER SERVICE
 (S) DENOTES SEWER SERVICE
 DISTANCES NEXT TO SERVICE DENOTES DISTANCE FROM CENTER OF ROAD
 DISTANCES NEXT TO RIGHT-OF-WAY DENOTES DISTANCES FROM PROPERTY CORNER TO SEWER SERVICE (S) AND WATER SERVICE (W). DISTANCES ARE NOT MEASURED ALONG CURVES BUT ARE STRAIGHT LINE DISTANCES.

DATE	REVISION

DRAWING NAME: D:\PROJECTS\158-02\ASBUILT\SERVICES.DWG
 DRAWN BY: NPW SCALE: 1" = 100'
 DATE OF DRAWING: PROJECT NO.: 158-02-001
 CHECKED BY: NPW APPROVED BY: NPW

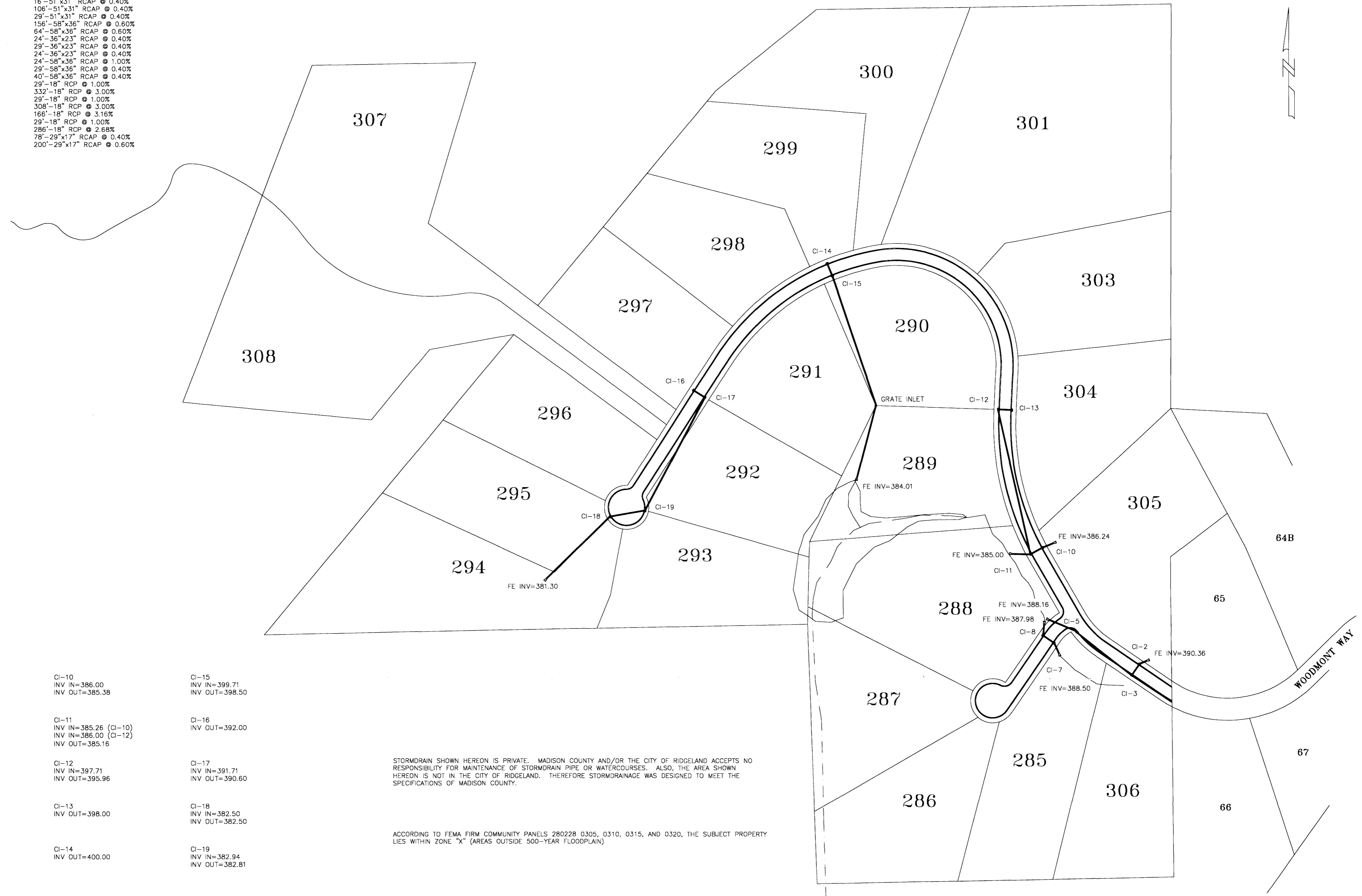
B BANKS ENGINEERING & SURVEYING, INC.
 108 AMERICAN WAY • MADISON, MS 39110
 OFFICE (601) 853-2311 • FAX (601) 853-3896

CLIENT:
184 LIMITED PARTNERSHIP
 A MISSISSIPPI LIMITED PARTNERSHIP
 LOUIS B. GIDEON, GENERAL PARTNER

PROJECT:
 BRIDGEWATER SEVEN AS-BUILT
 WATER AND SEWER SERVICE LOCATIONS

SHEET NO.
2

FE TO CI-2
 EXISTING PIPE TO CI-3
 CI-2 TO CI-3
 CI-3 TO CI-5
 CI-5 TO FE
 FE TO CI-7
 CI-7 TO CI-8
 CI-8 TO FE
 FE TO CI-10
 CI-10 TO CI-11
 CI-11 TO FE
 CI-13 TO CI-12
 CI-12 TO CI-11
 CI-14 TO CI-15
 CI-15 TO GRATE INLET
 GRATE INLET TO FE
 CI-16 TO CI-17
 CI-17 TO CI-19
 CI-19 TO CI-18
 CI-18 TO FE
 16'-51"x31" RCAP @ 0.40%
 106'-51"x31" RCAP @ 0.40%
 29'-51"x31" RCAP @ 0.40%
 156'-58"x36" RCAP @ 0.60%
 64'-58"x36" RCAP @ 0.60%
 24'-36"x23" RCAP @ 0.40%
 29'-36"x23" RCAP @ 0.40%
 24'-36"x23" RCAP @ 0.40%
 24'-58"x36" RCAP @ 1.00%
 29'-58"x36" RCAP @ 0.40%
 40'-58"x36" RCAP @ 0.40%
 29'-18" RCP @ 1.00%
 332'-18" RCP @ 3.00%
 29'-18" RCP @ 1.00%
 308'-18" RCP @ 3.00%
 166'-18" RCP @ 3.16%
 29'-18" RCP @ 1.00%
 286'-18" RCP @ 2.68%
 78'-29"x17" RCAP @ 0.40%
 200'-29"x17" RCAP @ 0.60%



CI-2 INV IN=390.30 INV OUT=390.20	CI-10 INV IN=386.00 INV OUT=385.38	CI-15 INV IN=399.71 INV OUT=398.50
CI-3 INV IN=390.08 INV OUT=389.58	CI-11 INV IN=385.26 (CI-10) INV IN=386.00 (CI-12) INV OUT=385.16	CI-16 INV OUT=392.00
CI-5 INV IN=388.64 INV OUT=388.54	CI-12 INV IN=397.71 INV OUT=395.96	CI-17 INV IN=391.71 INV OUT=390.60
CI-7 INV IN=388.40 INV OUT=388.30	CI-13 INV OUT=398.00	CI-18 INV IN=382.50 INV OUT=382.50
CI-8 INV IN=388.18 INV OUT=388.08	CI-14 INV OUT=400.00	CI-19 INV IN=382.94 INV OUT=382.81

STORMDRAIN SHOWN HEREON IS PRIVATE. MADISON COUNTY AND/OR THE CITY OF RIDGELAND ACCEPTS NO RESPONSIBILITY FOR MAINTENANCE OF STORMDRAIN PIPE OR WATERCOURSES. ALSO, THE AREA SHOWN HEREON IS NOT IN THE CITY OF RIDGELAND. THEREFORE STORMDRAINAGE WAS DESIGNED TO MEET THE SPECIFICATIONS OF MADISON COUNTY.

ACCORDING TO FEMA FIRM COMMUNITY PANELS 280228 0305, 0310, 0315, AND 0320, THE SUBJECT PROPERTY LIES WITHIN ZONE "X" (AREAS OUTSIDE 500-YEAR FLOODPLAIN)

DATE	REVISION

DRAWING NAME: D:\PROJECTS\158-02\ASBUILT\STORM.DWG
 DRAWN BY: NPW SCALE: 1" = 100'
 DATE OF DRAWING: 4-03 PROJECT NO.: 158-02-001
 CHECKED BY: NPW APPROVED BY: NPW

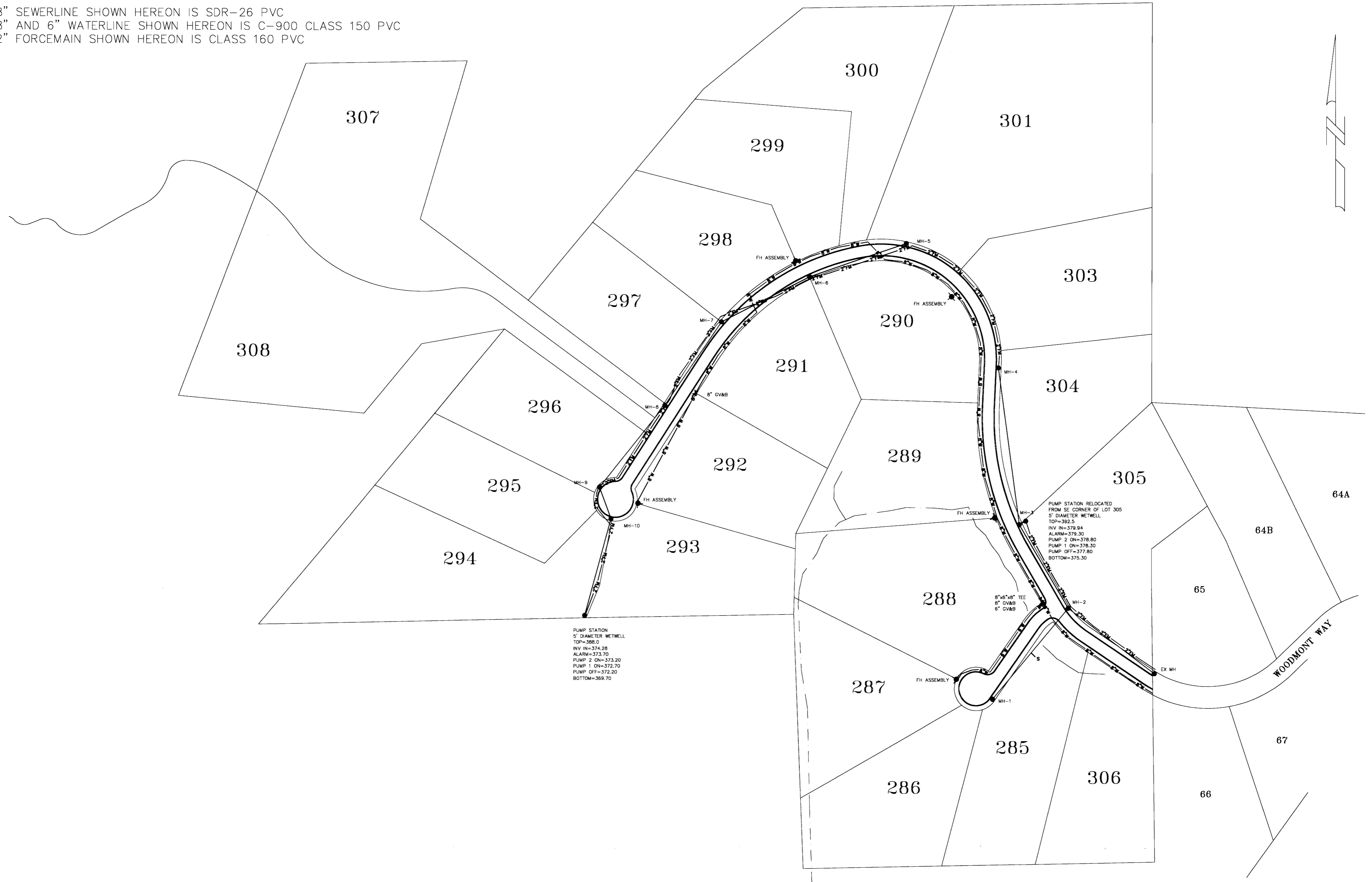
B BANKS ENGINEERING & SURVEYING, INC.
 108 AMERICAN WAY • MADISON, MS 39110
 OFFICE (601) 853-2311 • FAX (601) 853-3896

CLIENT:
184 LIMITED PARTNERSHIP
 A MISSISSIPPI LIMITED PARTNERSHIP
 LOUIS B. GIDEON, GENERAL PARTNER

PROJECT:
 BRIDGEWATER SEVEN AS-BUILT
 STORM DRAINAGE LAYOUT

SHEET NO.
4

8" SEWERLINE SHOWN HEREON IS SDR-26 PVC
 8" AND 6" WATERLINE SHOWN HEREON IS C-900 CLASS 150 PVC
 2" FORCEMAIN SHOWN HEREON IS CLASS 160 PVC



DATE	REVISION

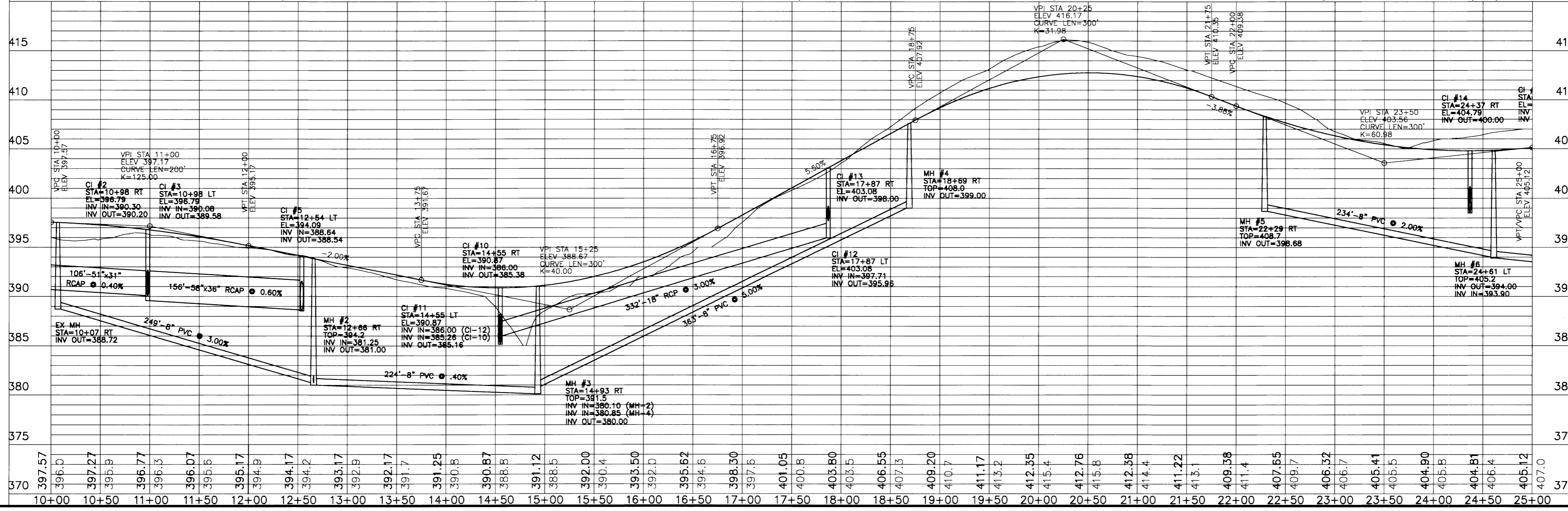
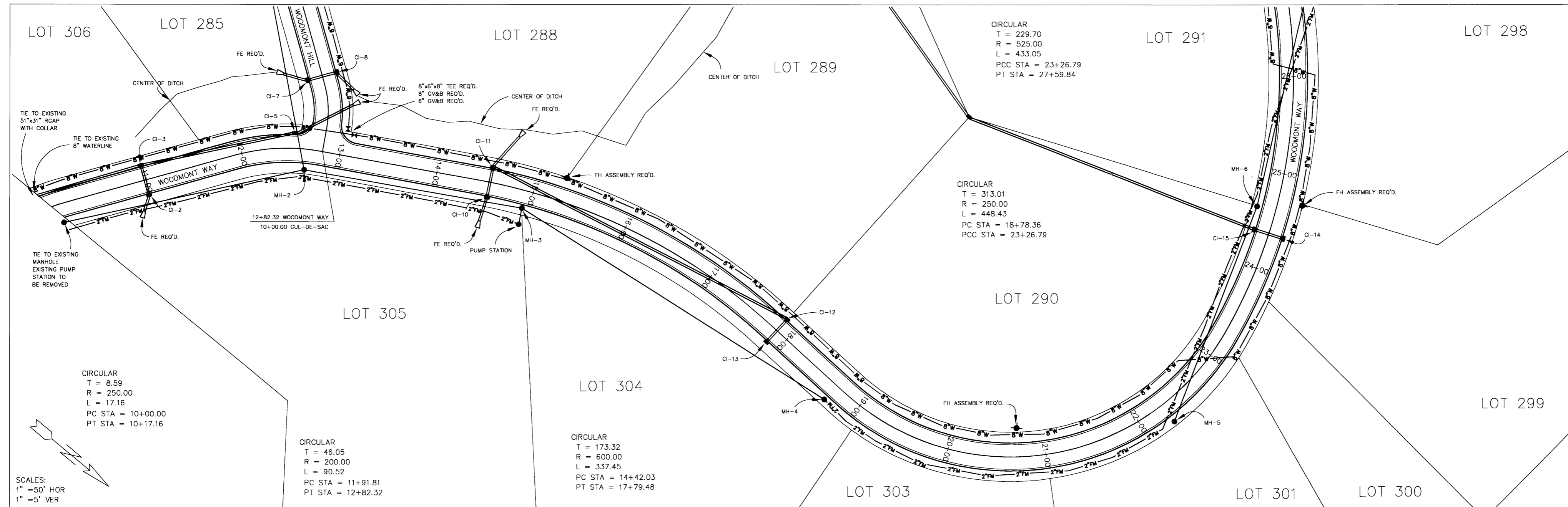
DRAWING NAME: D:\PROJECTS\158-02\ASBUILT\WATSEW.DWG
 DRAWN BY: NPW SCALE: 1" = 100'
 DATE OF DRAWING: 4-03 PROJECT NO.: 158-02-001
 CHECKED BY: _____ APPROVED BY: _____

B BANKS ENGINEERING & SURVEYING, INC.
 108 AMERICAN WAY * MADISON, MS 39110
 OFFICE (601) 853-2311 * FAX (601) 853-3896

CLIENT:
184 LIMITED PARTNERSHIP
 A MISSISSIPPI LIMITED PARTNERSHIP
 LOUIS B. GIDEON, GENERAL PARTNER

PROJECT:
 BRIDGEWATER SEVEN AS-BUILT
 WATER AND SEWER LAYOUT

SHEET NO.
5



DATE	REVISION

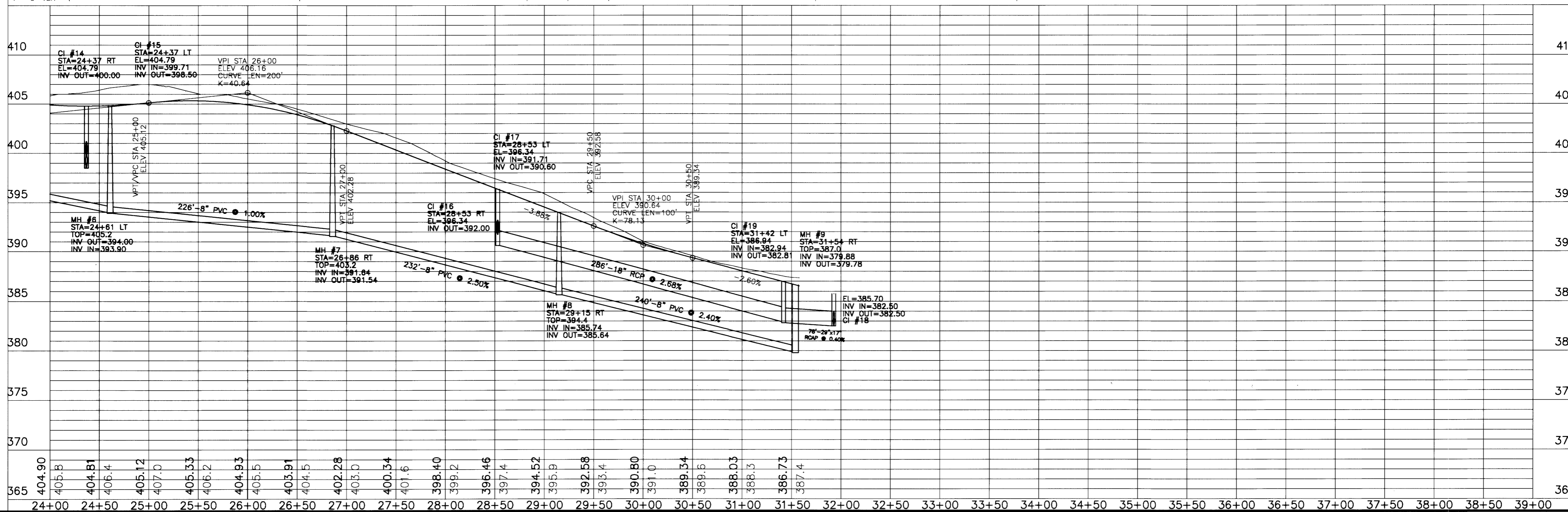
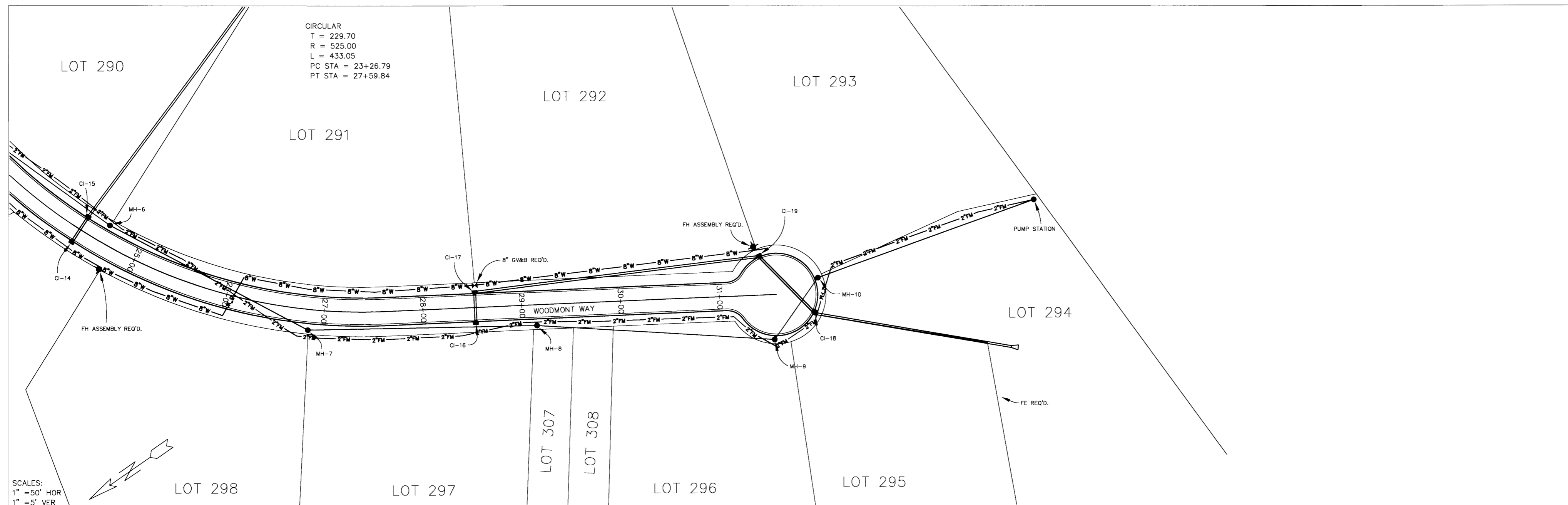
DRAWING NAME: D:\PROJECTS\158-02
 DRAWN BY: NPW SCALE: AS SHOWN
 DATE OF DRAWING: 4-03 PROJECT NO.: 158-02-001
 CHECKED BY: BCB APPROVED BY: NPW

B BANKS ENGINEERING & SURVEYING, INC.
 108 AMERICAN WAY • MADISON, MS 39110
 OFFICE (601) 853-2311 • FAX (601) 853-3896

CLIENT:
184 LIMITED PARTNERSHIP
 A MISSISSIPPI LIMITED PARTNERSHIP
 LOUIS B. GIDEON, GENERAL PARTNER

PROJECT:
 BRIDGEWATER SEVEN
 PLAN/PROFILE - WOODMONT WAY
 STATION B.O.P. TO 24+00

SHEET NO.
6



DATE	REVISION

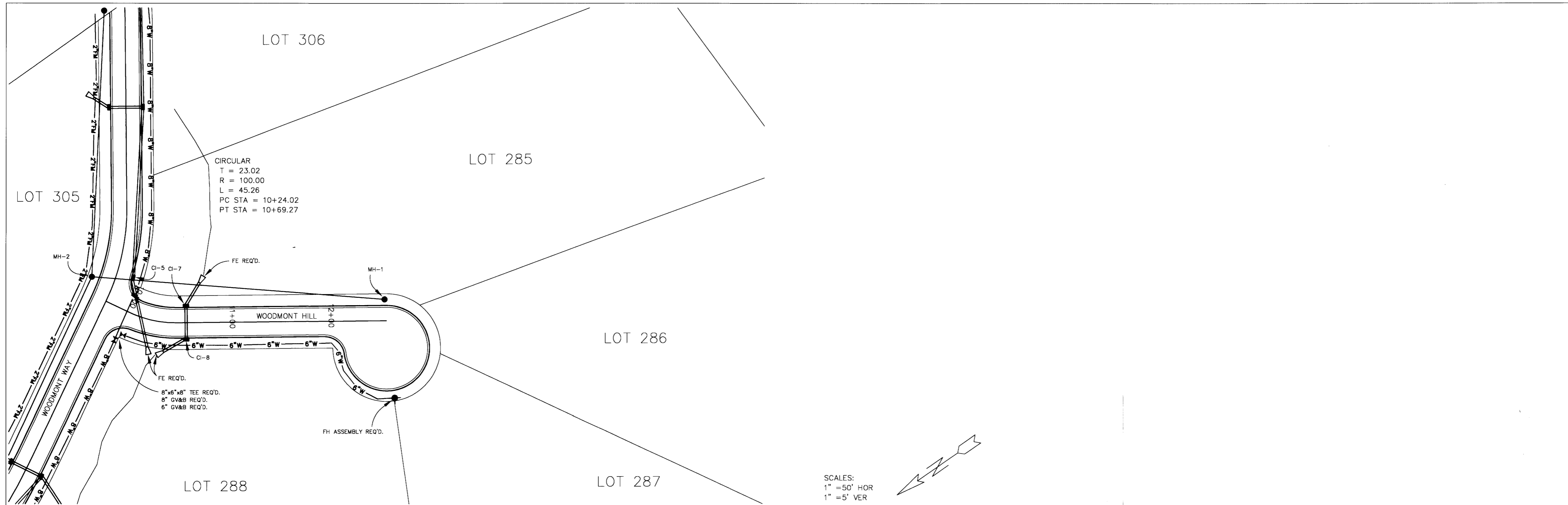
DRAWING NAME: D:\PROJECTS\158-02
 DRAWN BY: NPW SCALE: AS SHOWN
 DATE OF DRAWING: 4-03 PROJECT NO.: 158-02-001
 CHECKED BY: BCB APPROVED BY: NPW

B BANKS ENGINEERING & SURVEYING, INC.
 108 AMERICAN WAY • MADISON, MS 39110
 OFFICE (601) 853-2311 • FAX (601) 853-3896

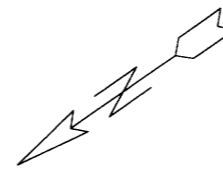
CLIENT:
184 LIMITED PARTNERSHIP
 A MISSISSIPPI LIMITED PARTNERSHIP
 LOUIS B. GIDEON, GENERAL PARTNER

PROJECT:
 BRIDGEWATER SEVEN AS-BUILT
 PLAN/PROFILE - WOODMONT WAY
 STATION 24+00 TO E.O.P.

SHEET NO.
7



SCALES:
 1" = 50' HOR
 1" = 5' VER



DATE	REVISION

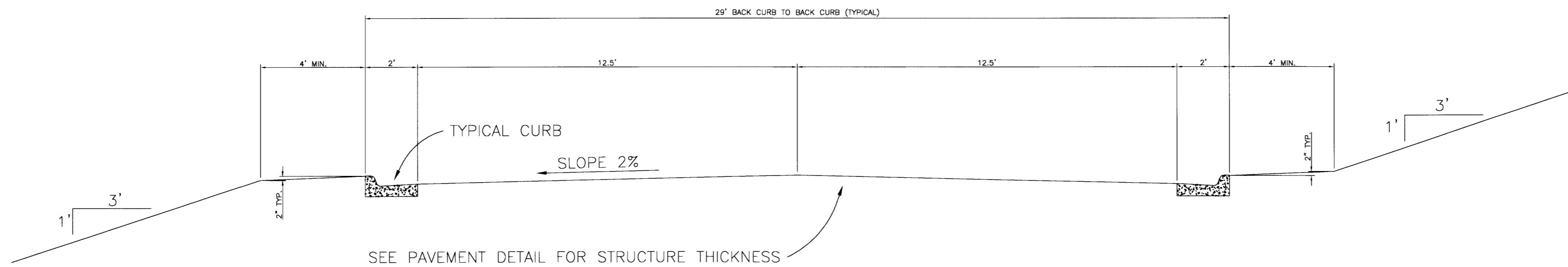
DRAWING NAME: D:\PROJECTS\158-02
 DRAWN BY: NPW SCALE: AS SHOWN
 DATE OF DRAWING: 4-03 PROJECT NO.: 158-02-001
 CHECKED BY: BCB APPROVED BY: NPW

B BANKS ENGINEERING & SURVEYING, INC.
 108 AMERICAN WAY • MADISON, MS 39110
 OFFICE (601) 853-2311 • FAX (601) 853-3896

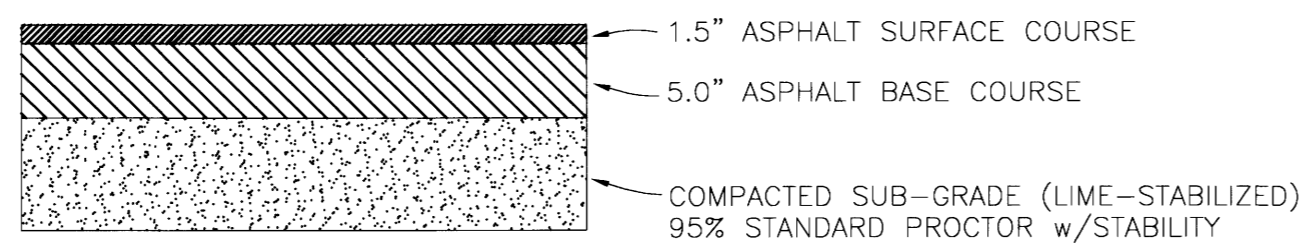
CLIENT:
184 LIMITED PARTNERSHIP
 A MISSISSIPPI LIMITED PARTNERSHIP
 LOUIS B. GIDEON, GENERAL PARTNER

PROJECT:
 BRIDGEWATER SEVEN AS-BUILT
 PLAN/PROFILE - WOODMONT HILL
 STATION B.O.P. TO E.O.P.

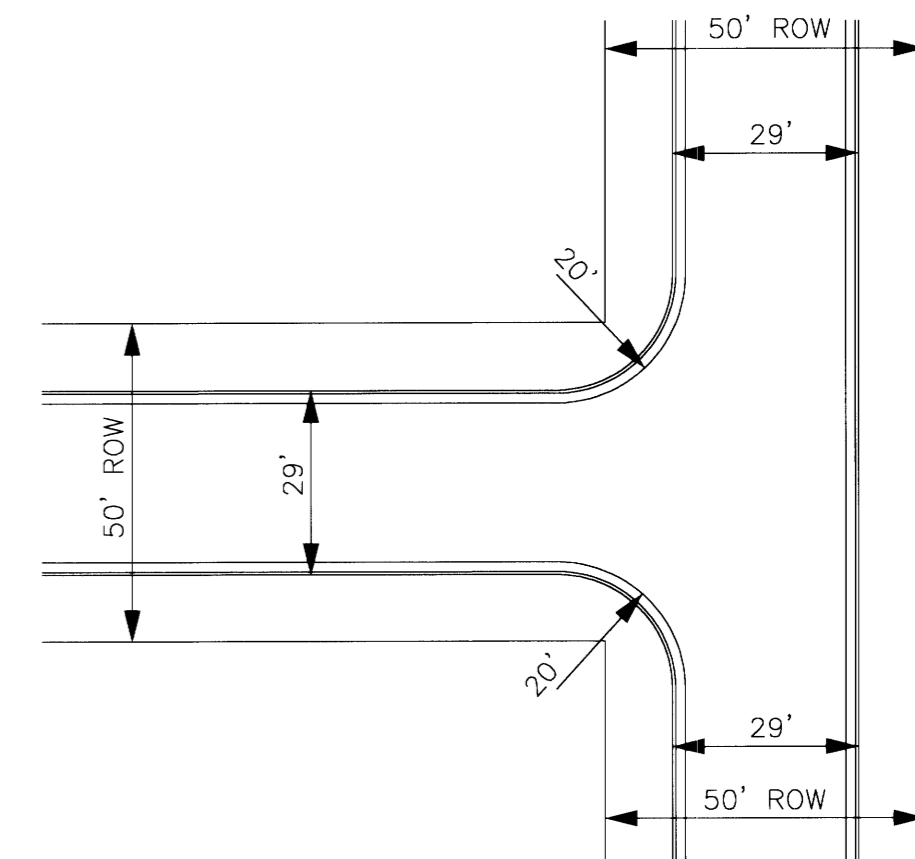
SHEET NO.
8



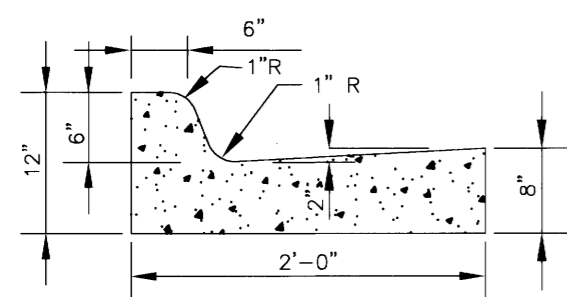
TYPICAL CURB AND GUTTER SECTION



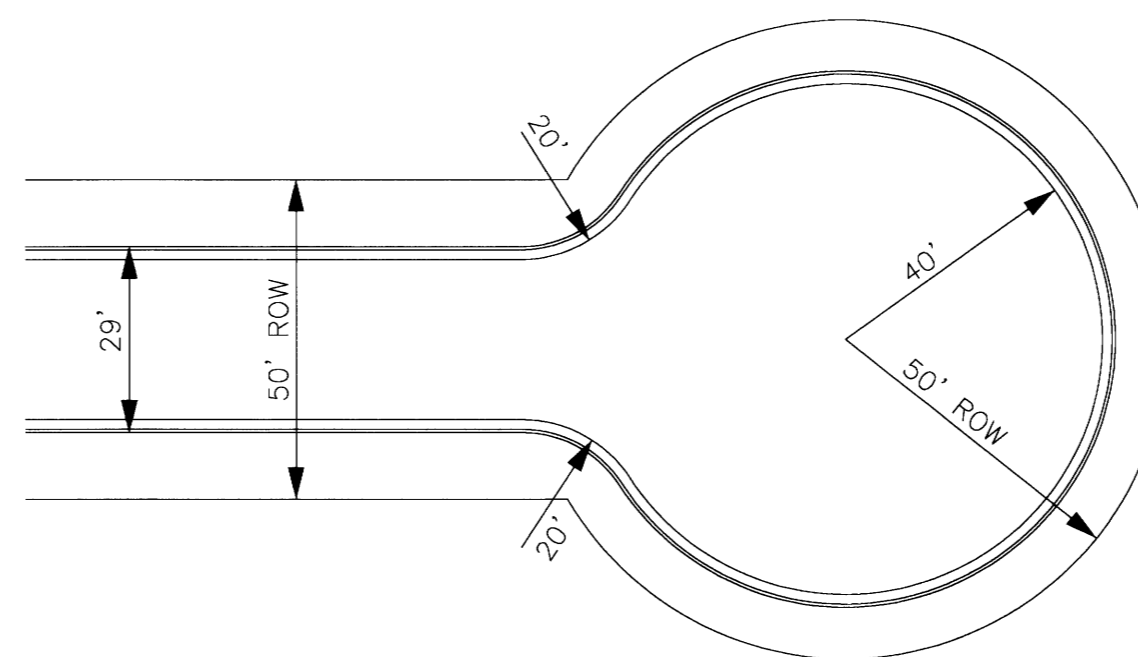
TYPICAL MINIMUM ASPHALT PAVEMENT
N.T.S.



TYPICAL INTERSECTION DETAIL
N.T.S.



STANDARD CURB AND GUTTER
N.T.S.



TYPICAL CUL-DE-SAC DETAIL
N.T.S.

DATE	REVISION

DRAWING NAME: D:\PROJECTS\158-02\ASBUILT\TYPSEC.DWG
 DRAWN BY: NPW SCALE: AS SHOWN
 DATE OF DRAWING: 4-03 PROJECT NO.: 158-02-001
 CHECKED BY: _____ APPROVED BY: _____

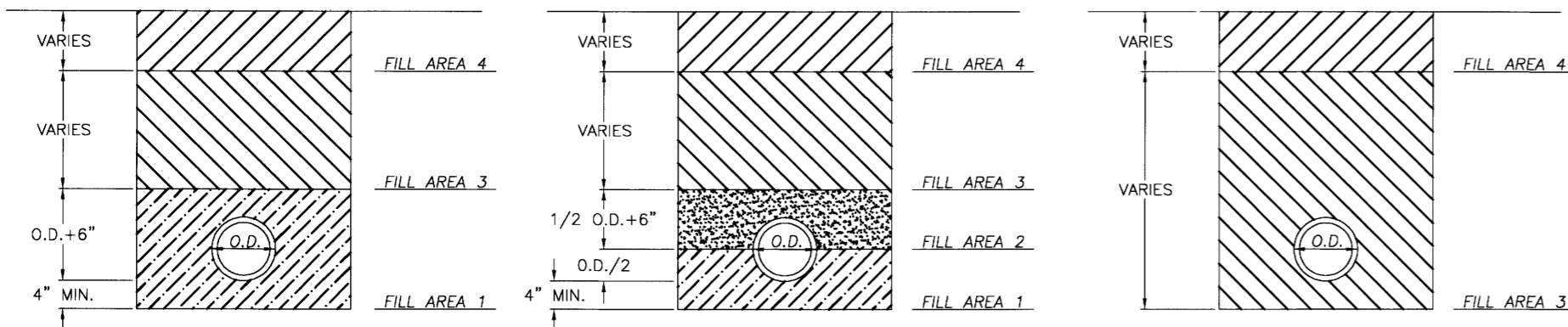
B **BANKS ENGINEERING & SURVEYING, INC.**
 108 AMERICAN WAY • MADISON, MS 39110
 OFFICE (601) 853-2311 • FAX (601) 853-3896

CLIENT:
184 LIMITED PARTNERSHIP
 A MISSISSIPPI LIMITED PARTNERSHIP
 LOUIS B. GIDEON, GENERAL PARTNER

PROJECT:
 BRIDGEWATER SEVEN AS-BUILT
 TYPICAL SECTIONS

SHEET NO.
9

FILL AREA 1 (all locations) - 6" MAXIMUM LOOSE LIFTS, HAND OR MECHANICALLY TAMPED TO 95% DENSITY.
 FILL AREA 2 (all locations) - 6" MAXIMUM LOOSE LIFTS, HAND OR MECHANICALLY TAMPED TO 95% DENSITY.
 FILL AREA 3 (select locations) - 12" MAXIMUM LOOSE LIFTS, MECHANICALLY TAMPED TO 95% DENSITY.
 FILL AREA 4 - SEE PAVEMENT REPLACEMENT DETAIL FOR PAVED AREAS, AT OTHER LOCATIONS BRING FILL AREA 3 TO SURFACE.

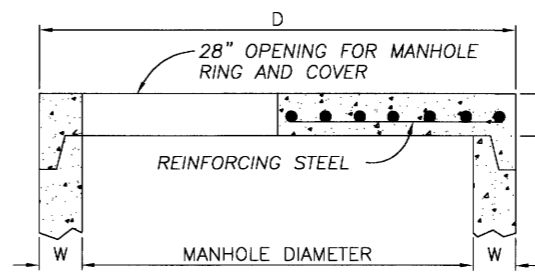


CLASS B
N.T.S.

CLASS C
N.T.S.

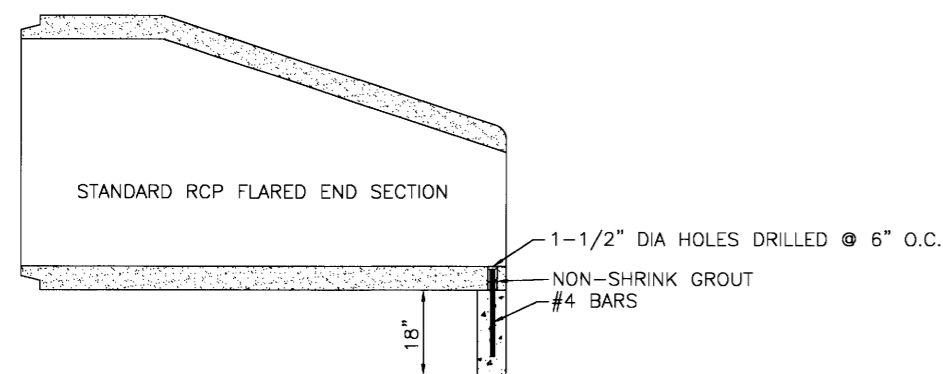
CLASS D
N.T.S.

BEDDING / BACKFILLING DETAILS
N.T.S.

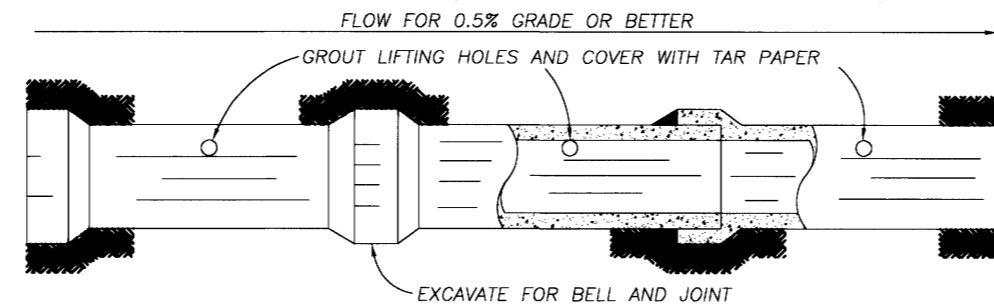


FLAT SLAB MANHOLE TOP
N.T.S.

DIMENSION TABLE			
PIPE DIAMETER	W	D	T
48"	5"	58"	6"
60"	6"	72"	8"
72"	7"	86"	8"
84"	8"	100"	8"
96"	9"	114"	8"
108"	10"	128"	8"

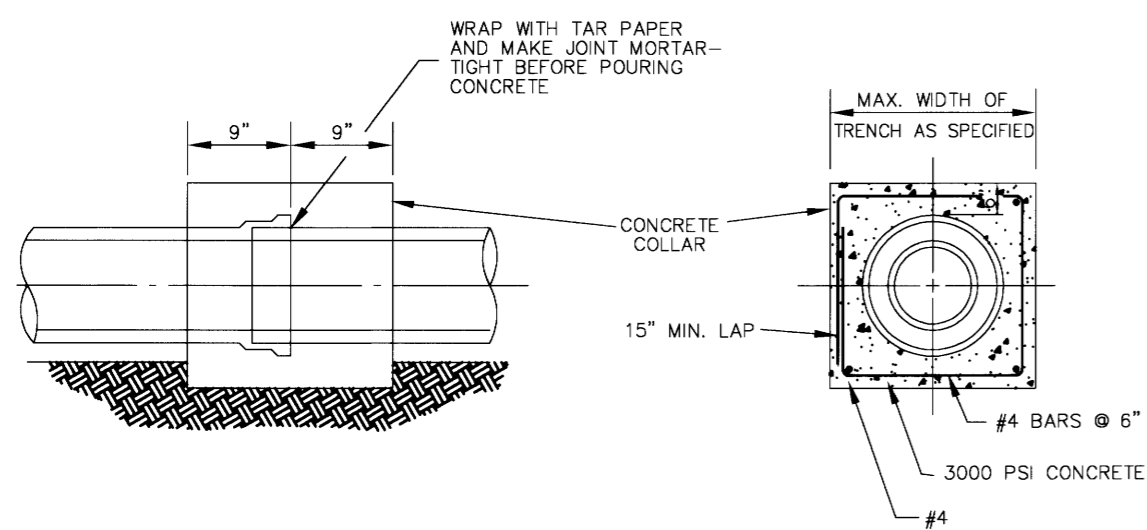


TYPICAL SECTION - F.E.S. W/TOE WALL

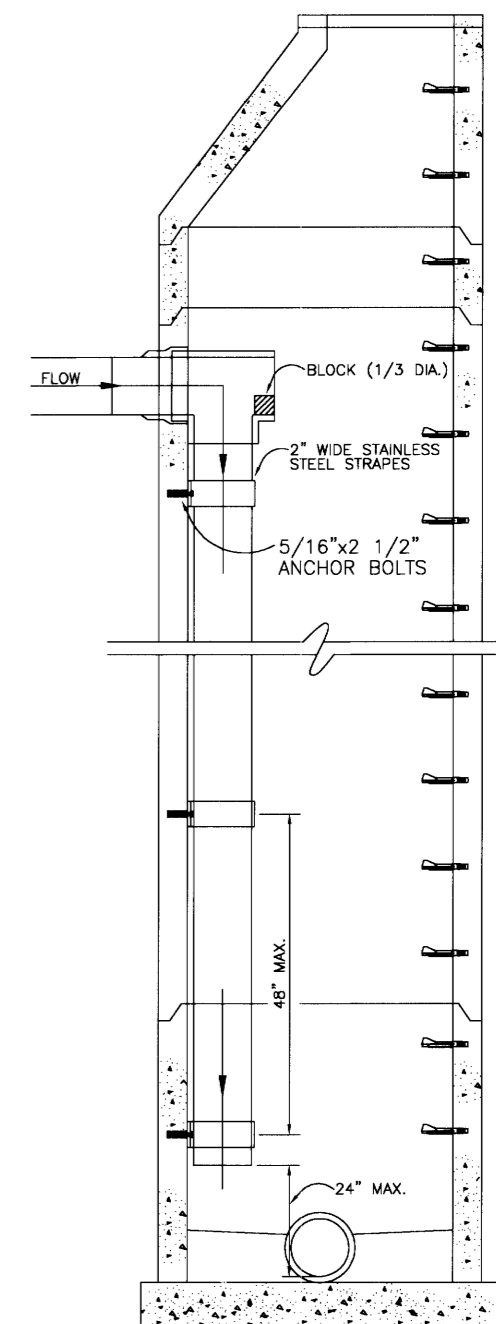


NOTE: ALL STORM SEWER JOINTS TO BE WIPED WITH 1:2 MIX CEMENT.

STORM SEWER CONSTRUCTION



TYPICAL DETAIL OF CONCRETE COLLAR
N.T.S.



SECTION OF DROP INTERIOR DROP MANHOLE
N.T.S.

DATE	REVISION

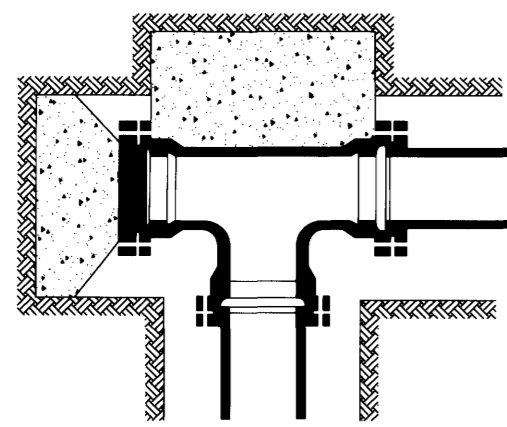
DRAWING NAME: D:\PROJECTS\158-02\ASBUILT\STDMISC.DWG
 DRAWN BY: B. C. B. SCALE: AS SHOWN
 DATE OF DRAWING: 4-03 PROJECT NO.: 158-02-001
 CHECKED BY: _____ APPROVED BY: _____

B BANKS ENGINEERING & SURVEYING, INC.
 108 AMERICAN WAY * MADISON, MS 39110
 OFFICE (601) 853-2311 * FAX (601) 853-3896

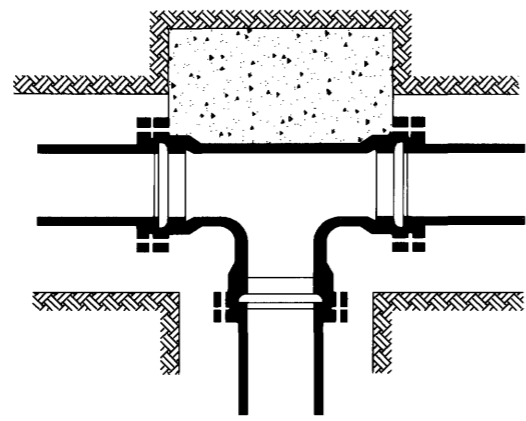
CLIENT:
184 LIMITED PARTNERSHIP
 A MISSISSIPPI LIMITED PARTNERSHIP
 LOUIS B. GIDEON, GENERAL PARTNER

PROJECT:
 BRIDGEWATER SEVEN AS-BUILT
 MISCELLANEOUS DETAILS

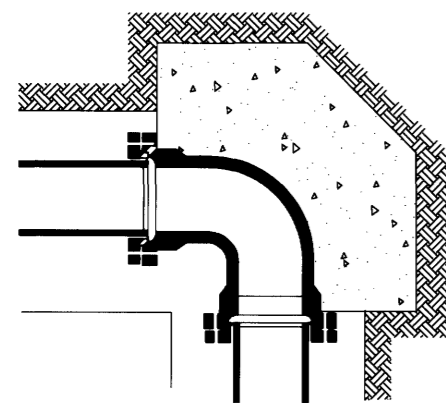
SHEET NO.
10



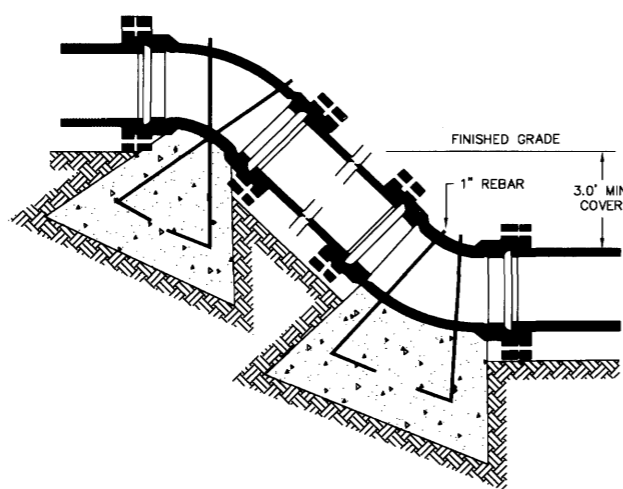
PLUGGED TEE



TEE



90° BENDS



VERTICAL BENDS

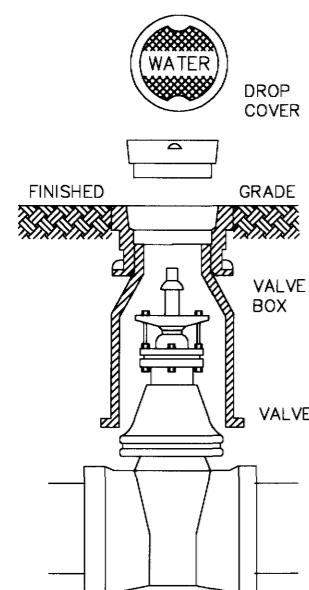
NOMINAL PIPE DIAMETER (IN.)	DEAD END OR TEE	90° BEND	45° BEND	22 1/2° BEND	11 1/4° BEND
4	2.0	2.0	2.0	2.0	2.0
6	2.0	2.0	2.0	2.0	2.0
8	3.0	3.0	2.0	2.0	2.0
12	5.0	6.0	4.0	3.0	3.0
16	8.0	12.0	6.0	4.0	4.0

4	—	—	6.0 (.22)	4.0 (.15)	4.0 (.15)
6	—	—	14.0 (.52)	6.0 (.22)	4.0 (.15)
8	—	—	27.0 (1.0)	9.0 (.33)	6.0 (.22)
12	—	—	68.0 (2.5)	22.0 (.80)	9.0 (.33)
16	—	—	90.0 (3.33)	52.0 (1.9)	18.0 (.67)

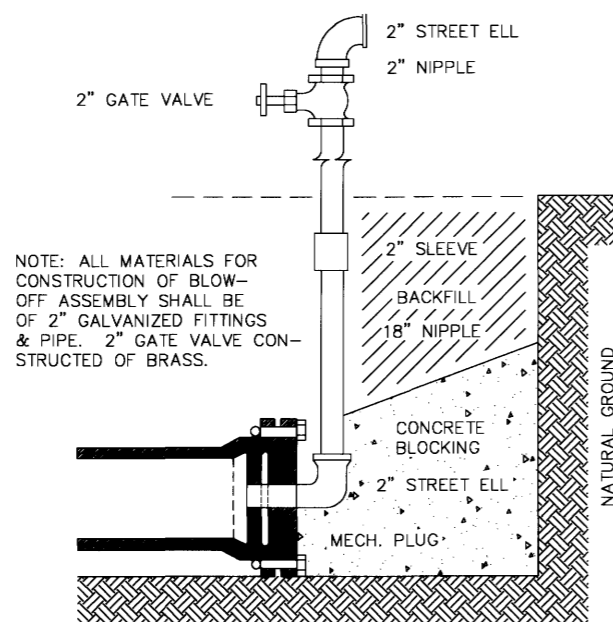
Volume of blocks including soil load CU.FT. (CU.YDS.)

BEARING AREA IN SQ. FT.

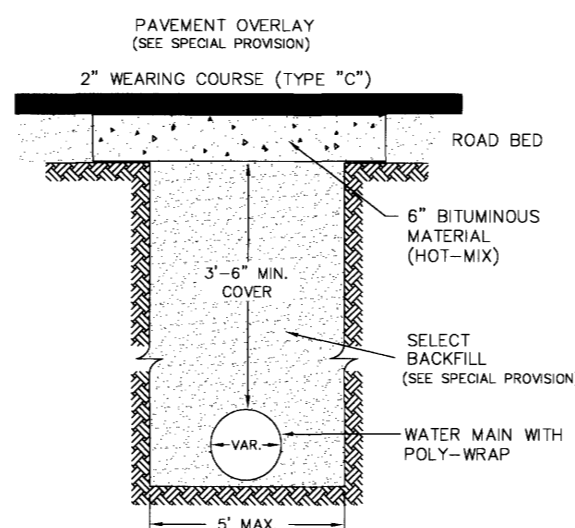
TYPICAL THRUST BLOCK INSTALLATION



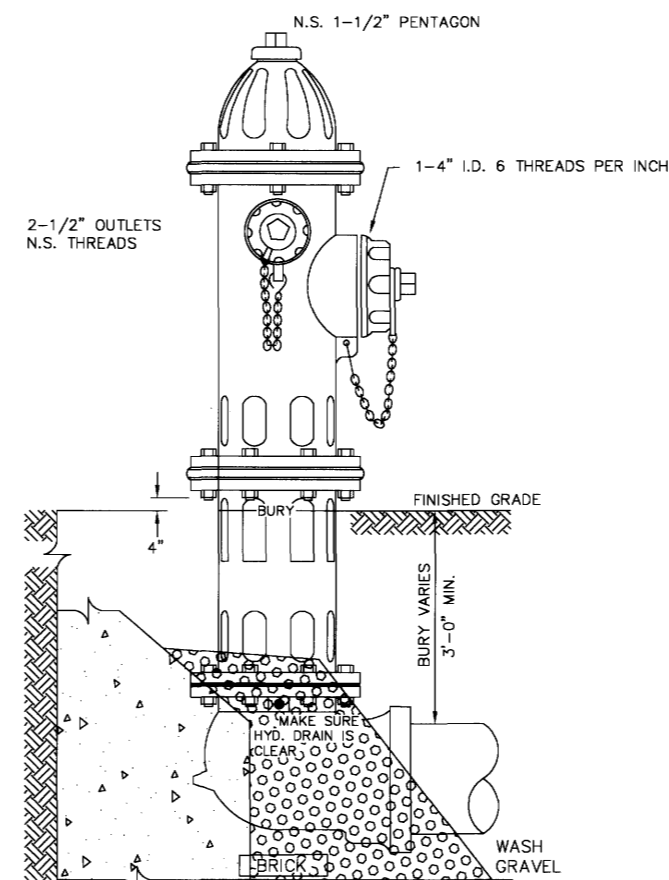
TYPICAL VALVE BOX



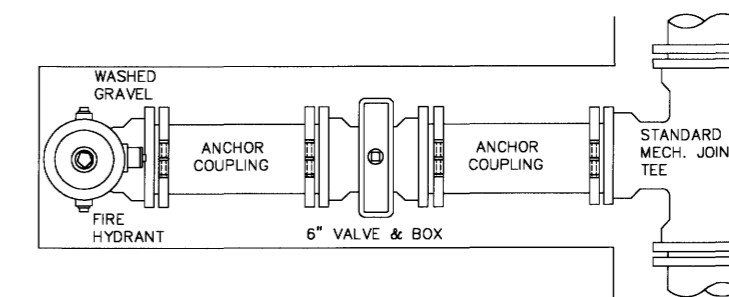
TYPICAL BLOW-OFF ASSEMBLY



TYPICAL STREET REPAIR

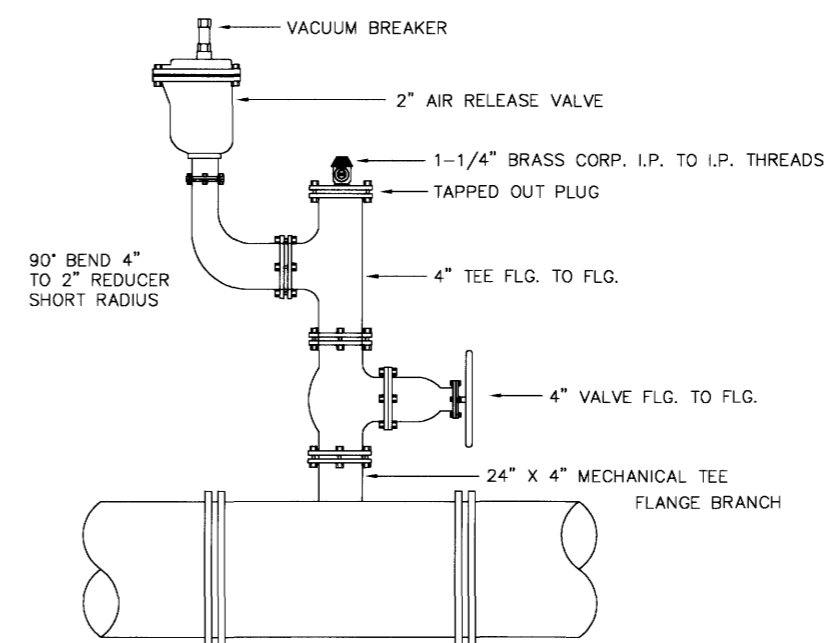


NOTE: ANCHOR RODS REQUIRED FOR ALL FIRE HYDRANTS



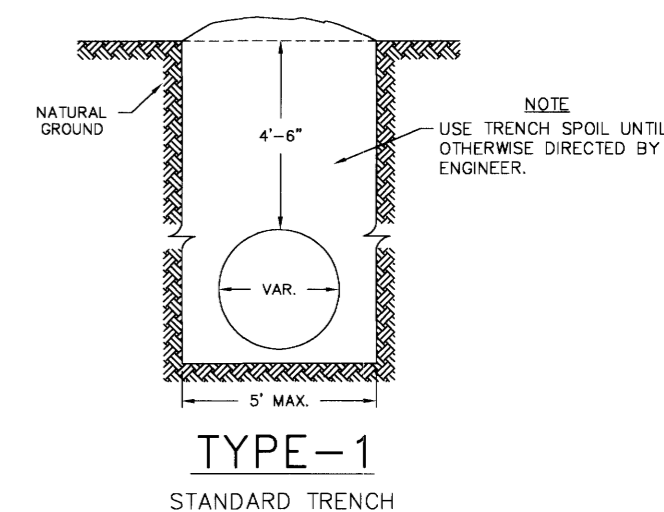
NOTE: GATE VALVES WILL BE REQUIRED ON ALL FIRE HYDRANT LEGS.

TYPICAL FIRE HYDRANT INSTALLATION



TYPE-2 TYPICAL AIR RELEASE VALVE

NOTE: STANDARD 5' (FIVE FOOT) PRECAST CONCRETE MANHOLE USED IN LIEU OF TYPICAL SECTION, 1-1. CENTER OF MANHOLE LID TO BE IN LINE WITH CORPORATION.



TYPE-1 STANDARD TRENCH

NOTE: USE TRENCH SPOIL UNTIL OTHERWISE DIRECTED BY ENGINEER.

DATE	REVISION

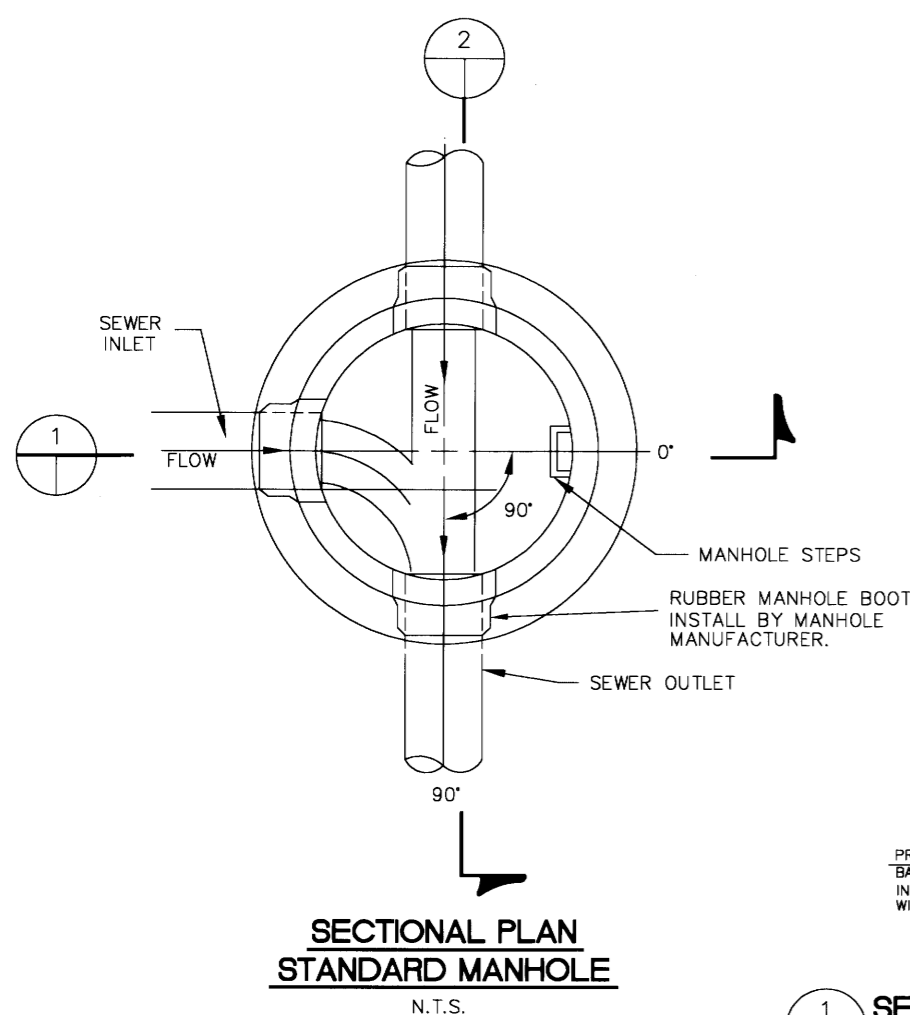
DRAWING NAME: D:\PROJECTS\158-02\ASBUILT\WAT-DET.DWG	
DRAWN BY: NPW	SCALE: AS SHOWN
DATE OF DRAWING: 4-03	PROJECT NO.: 158-02-001
CHECKED BY:	APPROVED BY:

B BANKS ENGINEERING & SURVEYING, INC.
 108 AMERICAN WAY • MADISON, MS 39110
 OFFICE (601) 853-2311 • FAX (601) 853-3896

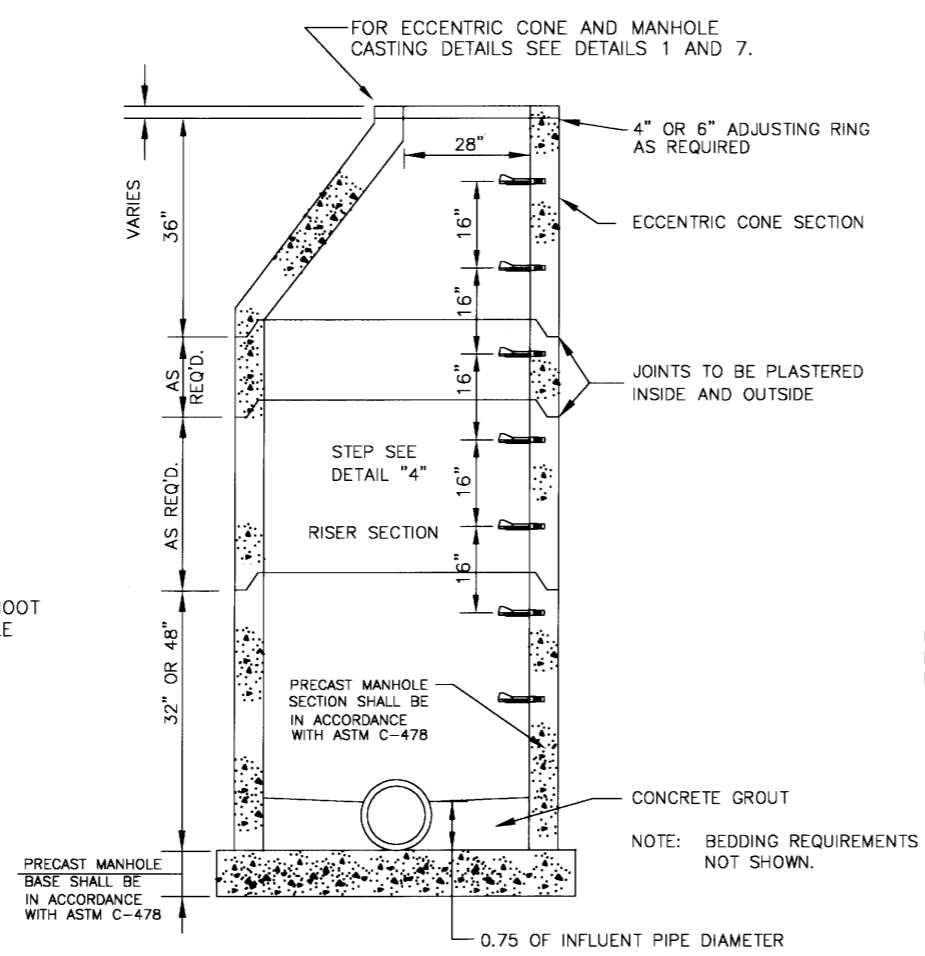
CLIENT:
184 LIMITED PARTNERSHIP
 A MISSISSIPPI LIMITED PARTNERSHIP
 LOUIS B. GIDEON, GENERAL PARTNER

PROJECT:
 BRIDGEWATER SEVEN AS-BUILT
 STANDARD WATER DETAILS

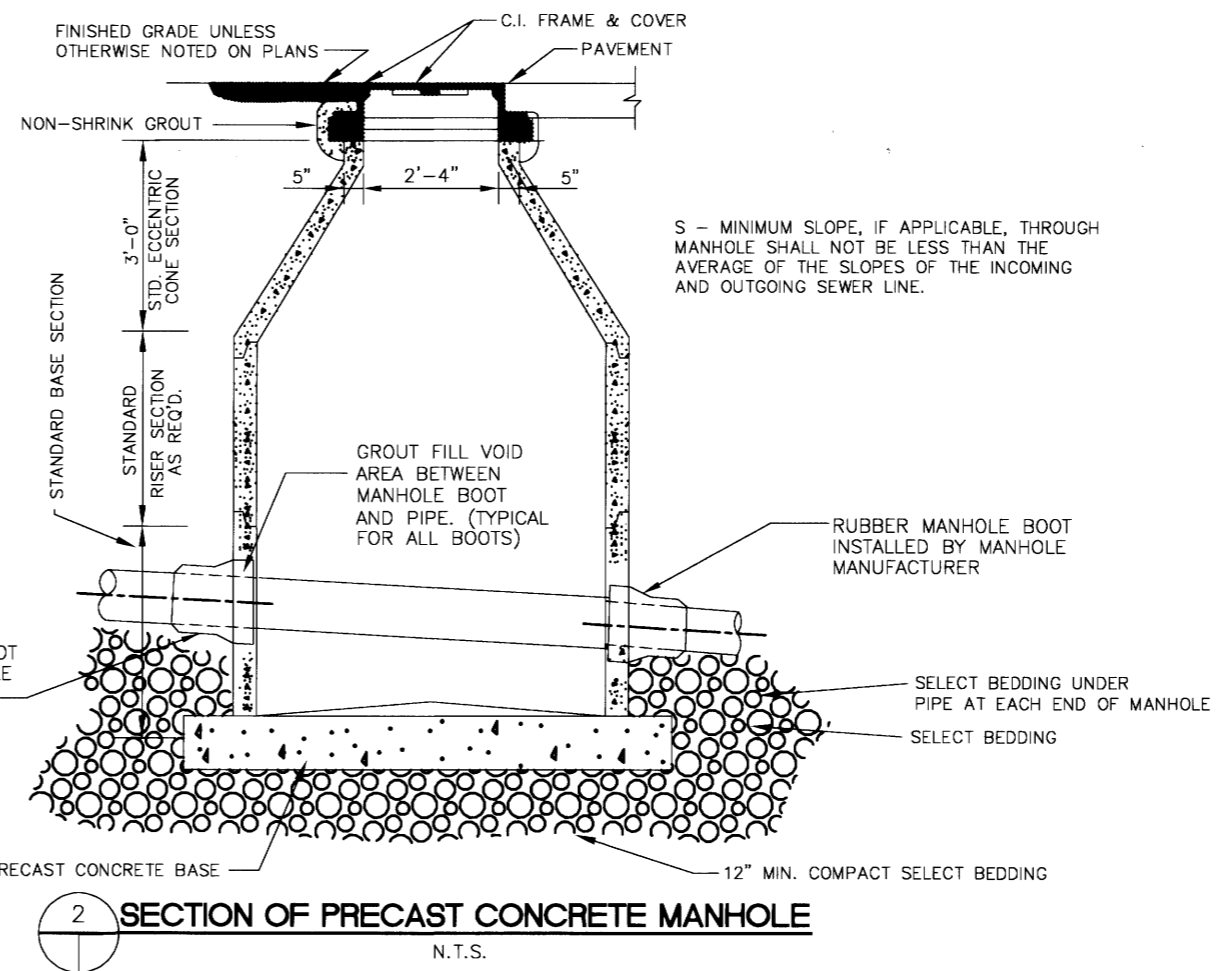
SHEET NO.
11



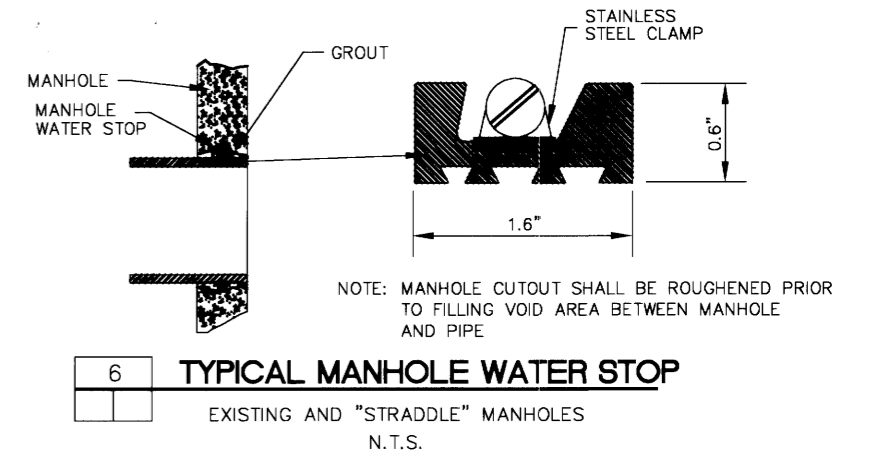
**SECTIONAL PLAN
STANDARD MANHOLE**
N.T.S.



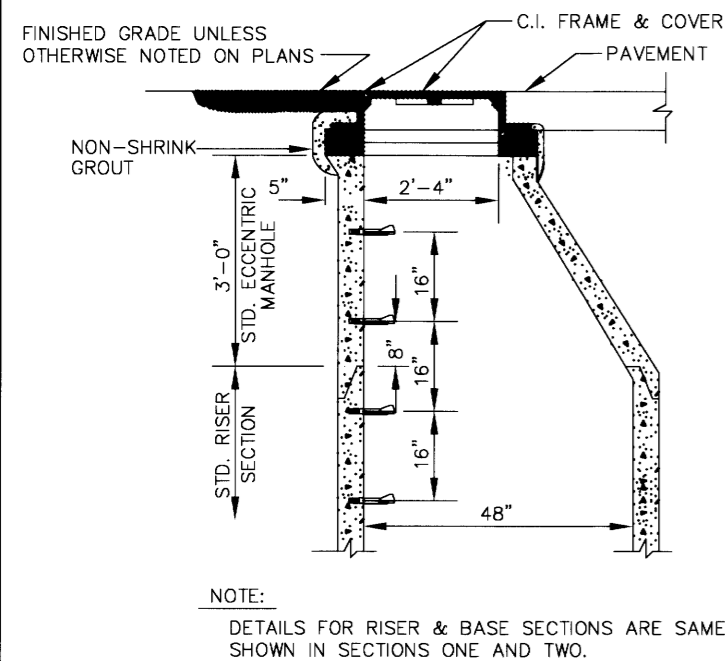
SECTION OF PRECAST CONCRETE MANHOLE
N.T.S.



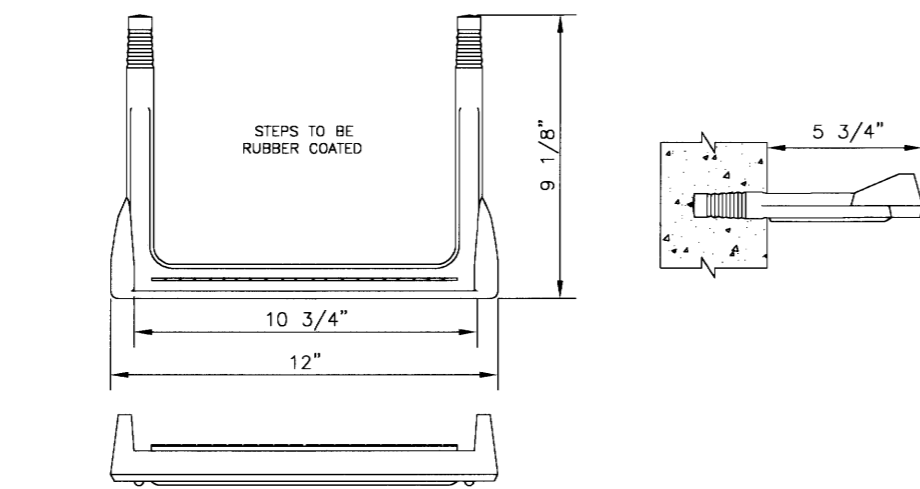
SECTION OF PRECAST CONCRETE MANHOLE
N.T.S.



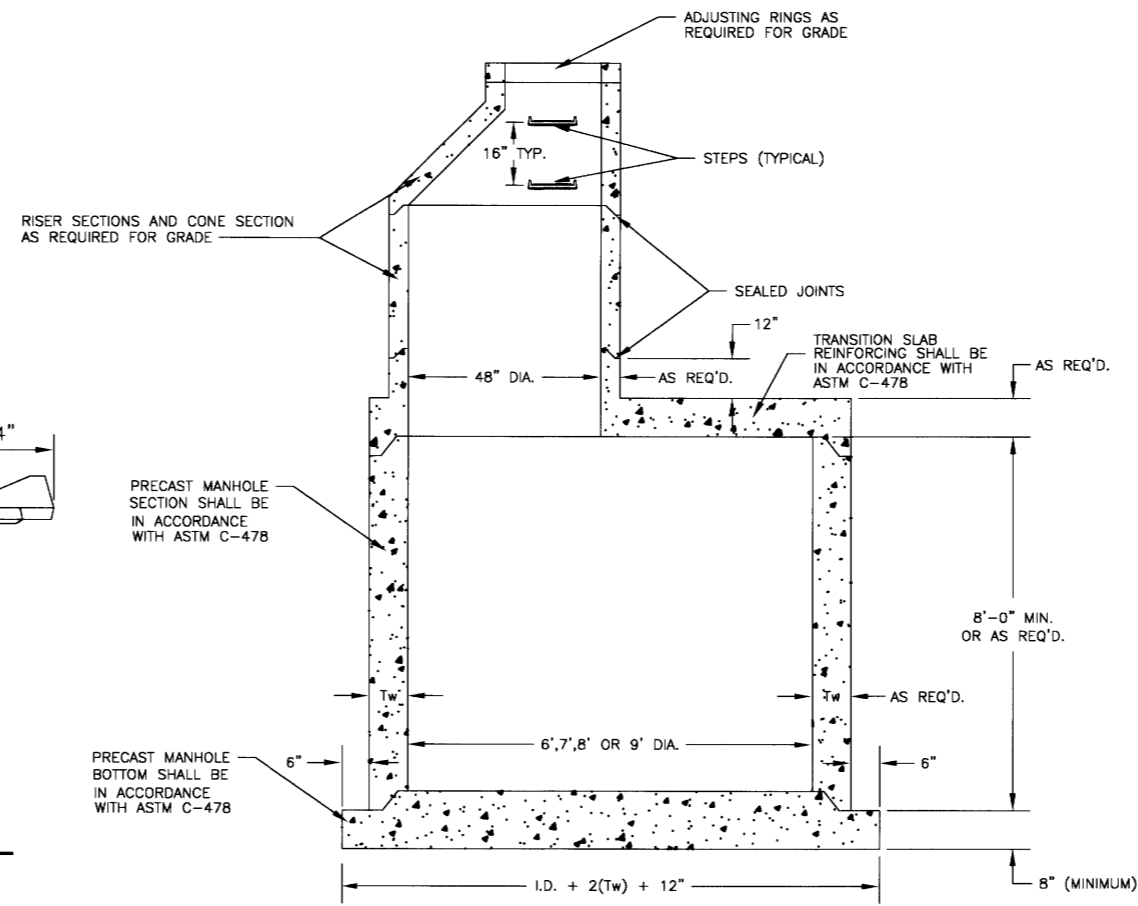
6 TYPICAL MANHOLE WATER STOP
EXISTING AND "STRADDLE" MANHOLES
N.T.S.



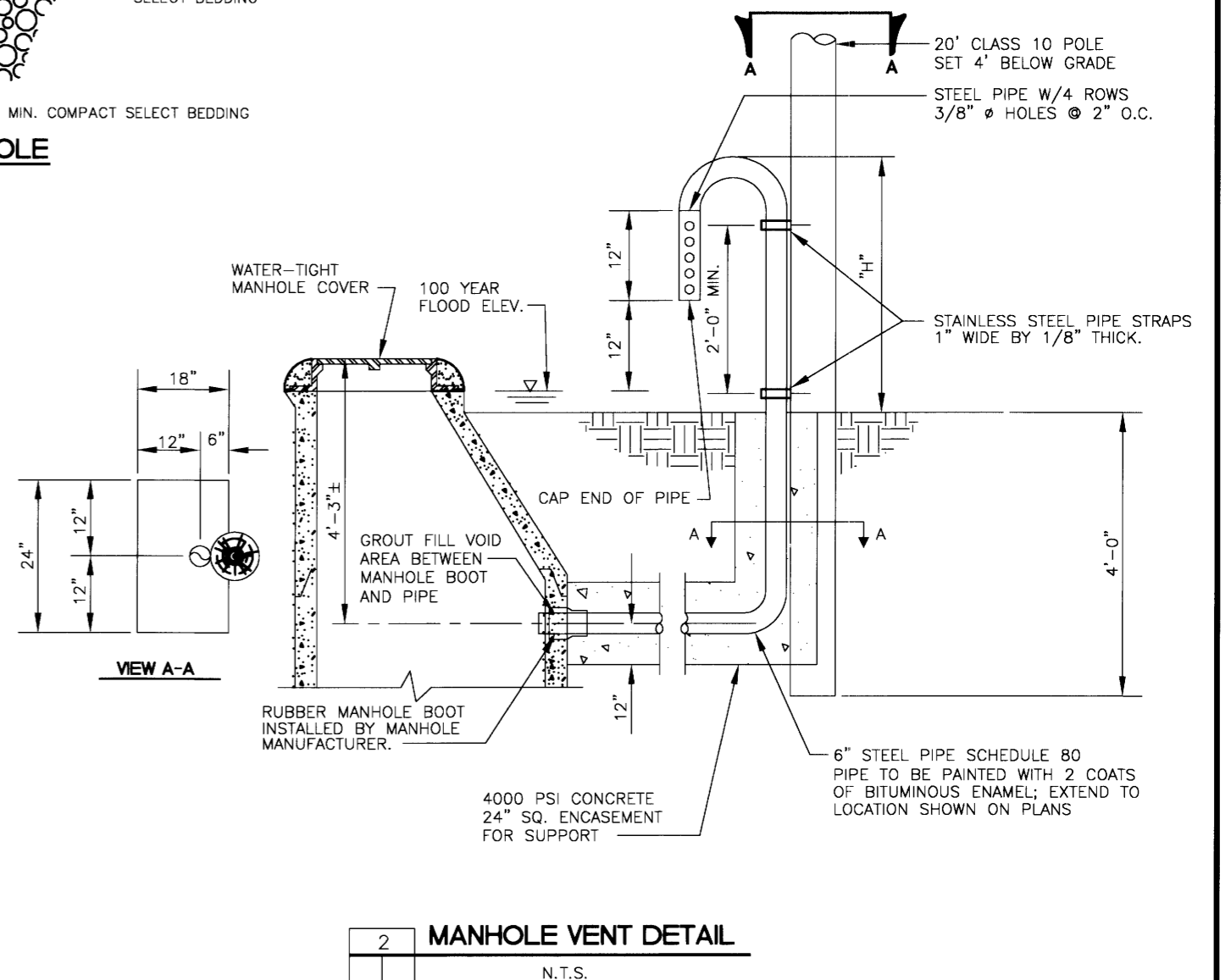
**1 STANDARD ECCENTRIC CONE
FOR ALL DIAMETER MANHOLES**
N.T.S.



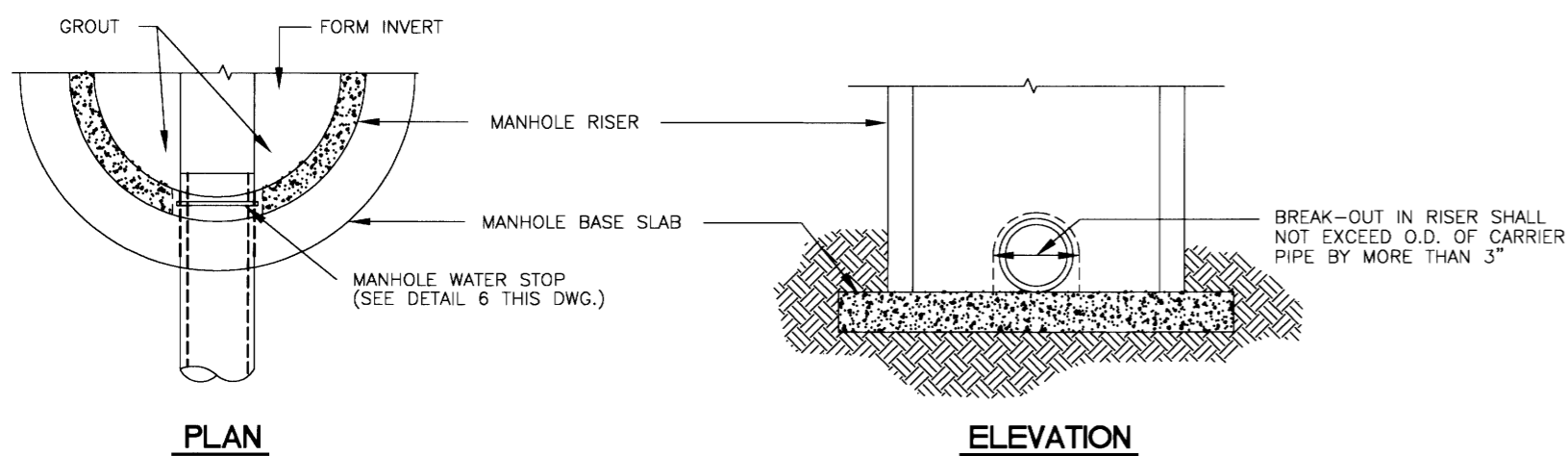
4 MANHOLE STEP DETAIL
N.T.S.



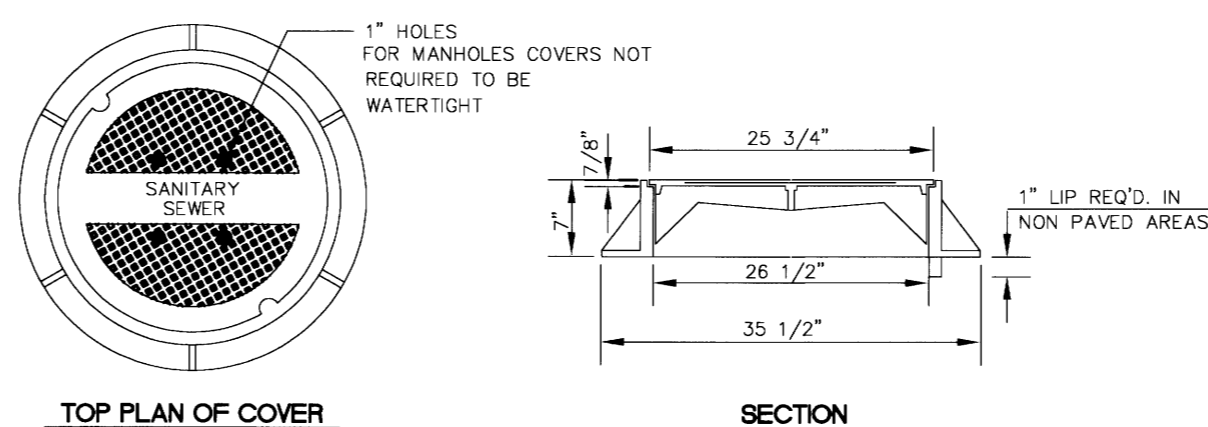
6,7,8 OR 9 STANDARD PRECAST MANHOLE DETAIL
N.T.S.



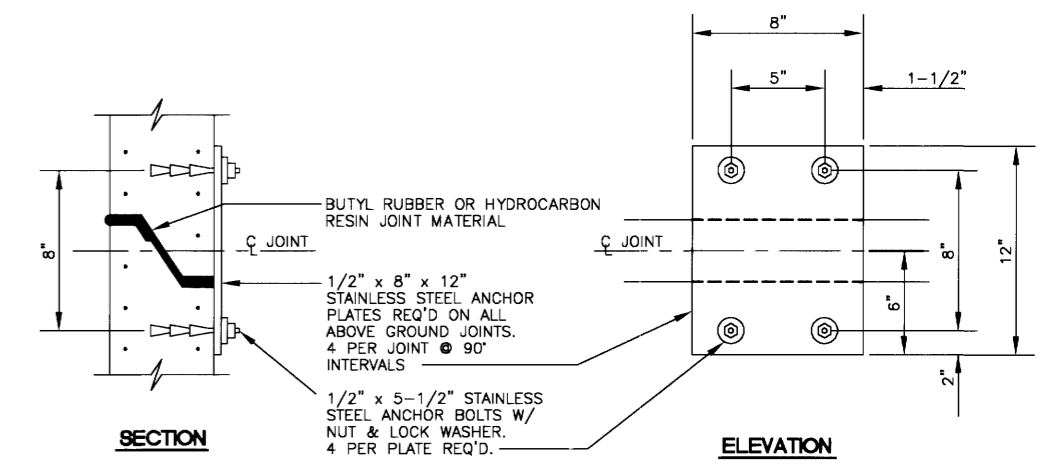
2 MANHOLE VENT DETAIL
N.T.S.



5 TYP. DETAIL OF SEWER PIPE CONNECTION TO EXISTING MANHOLE
N.T.S.



7 STANDARD MANHOLE FRAME AND COVER
N.T.S.



**3 TYPICAL PRECAST CONCRETE
MANHOLE ABOVE GROUND JOINT DETAIL**
N.T.S.

DATE	REVISION

DRAWING NAME: D:\PROJECTS\158-02\ASBUILT\SEW.DET.DWG	
DRAWN BY: B. C. B.	SCALE: AS SHOWN
DATE OF DRAWING: 4-03	PROJECT NO.: 158-02-001
CHECKED BY: _____	APPROVED BY: _____

B **BANKS ENGINEERING & SURVEYING, INC.**
108 AMERICAN WAY • MADISON, MS 39110
OFFICE (601) 853-2311 • FAX (601) 853-3896

CLIENT:
184 LIMITED PARTNERSHIP
A MISSISSIPPI LIMITED PARTNERSHIP
LOUIS B. GIDEON, GENERAL PARTNER

PROJECT:
**BRIDGEWATER SEVEN AS-BUILT
STANDARD SANITARY SEWER DETAILS**

SHEET NO.
12