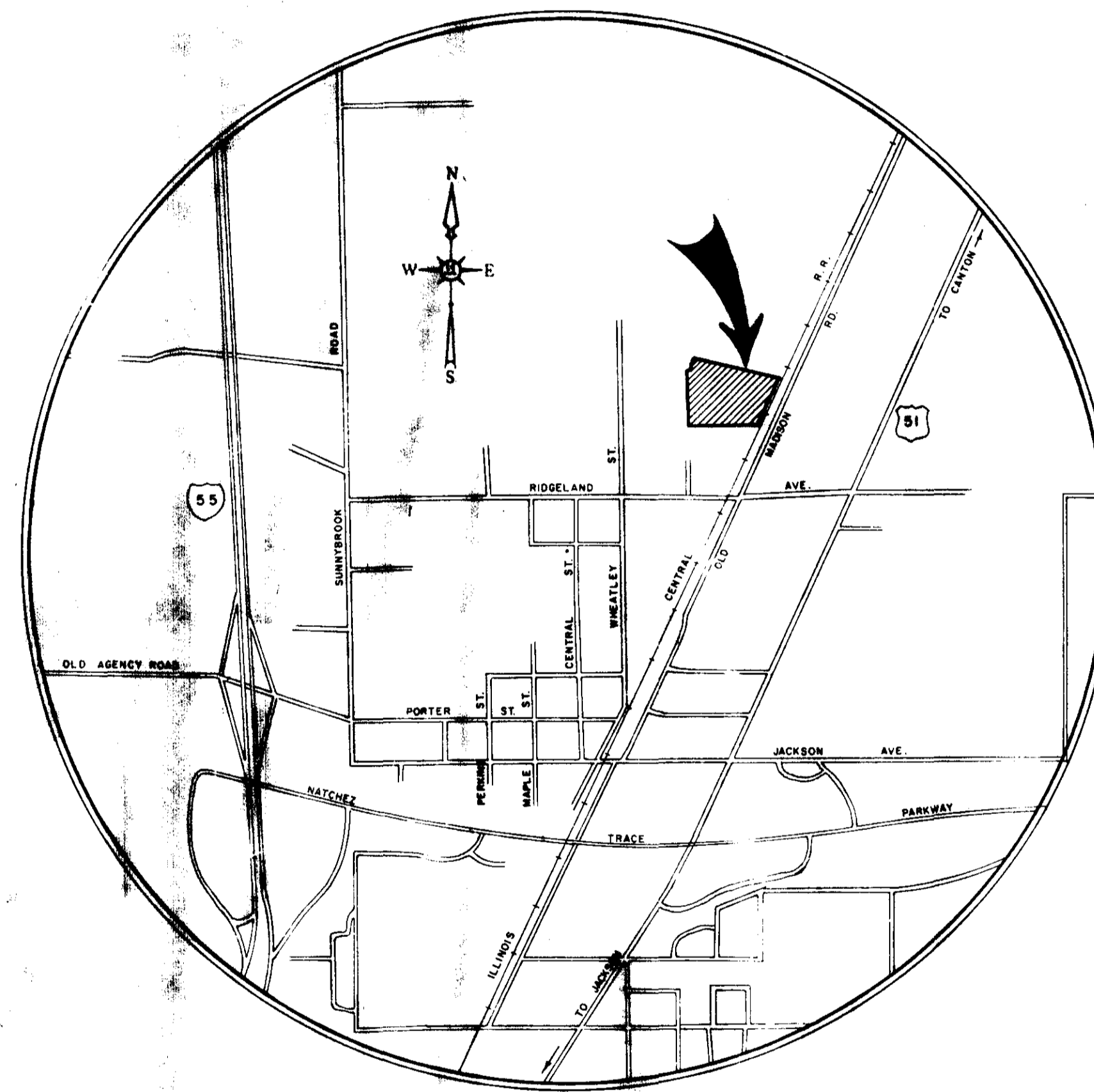


BROOKWOODS SUBDIVISION

Situated in Lot 1, Block 12 and Lot 5, Block 9, Highland Colony Subdivision
Ridgeland, Madison County, Mississippi

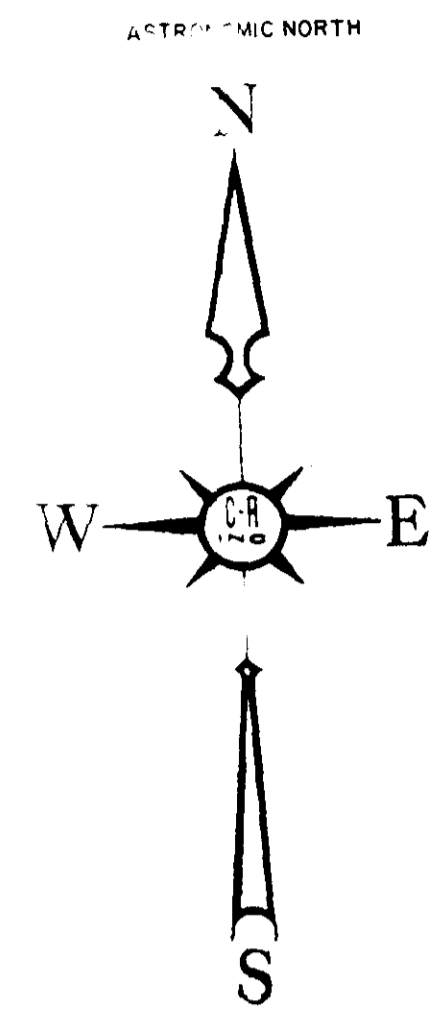


CASE & ASSOCIATES, INC.
JACKSON, MISS.
FEBRUARY, 1989



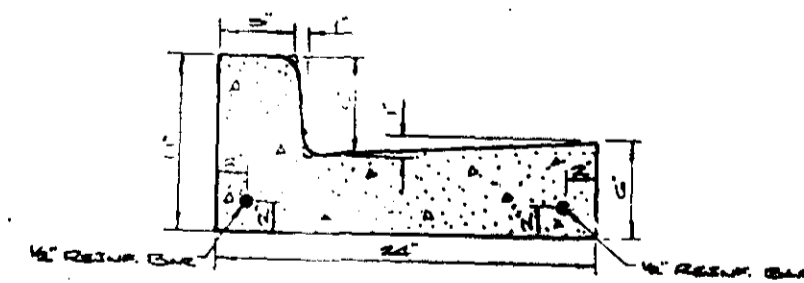
PART 1 - "AS BUILT"
10-25-89

PWP-00213



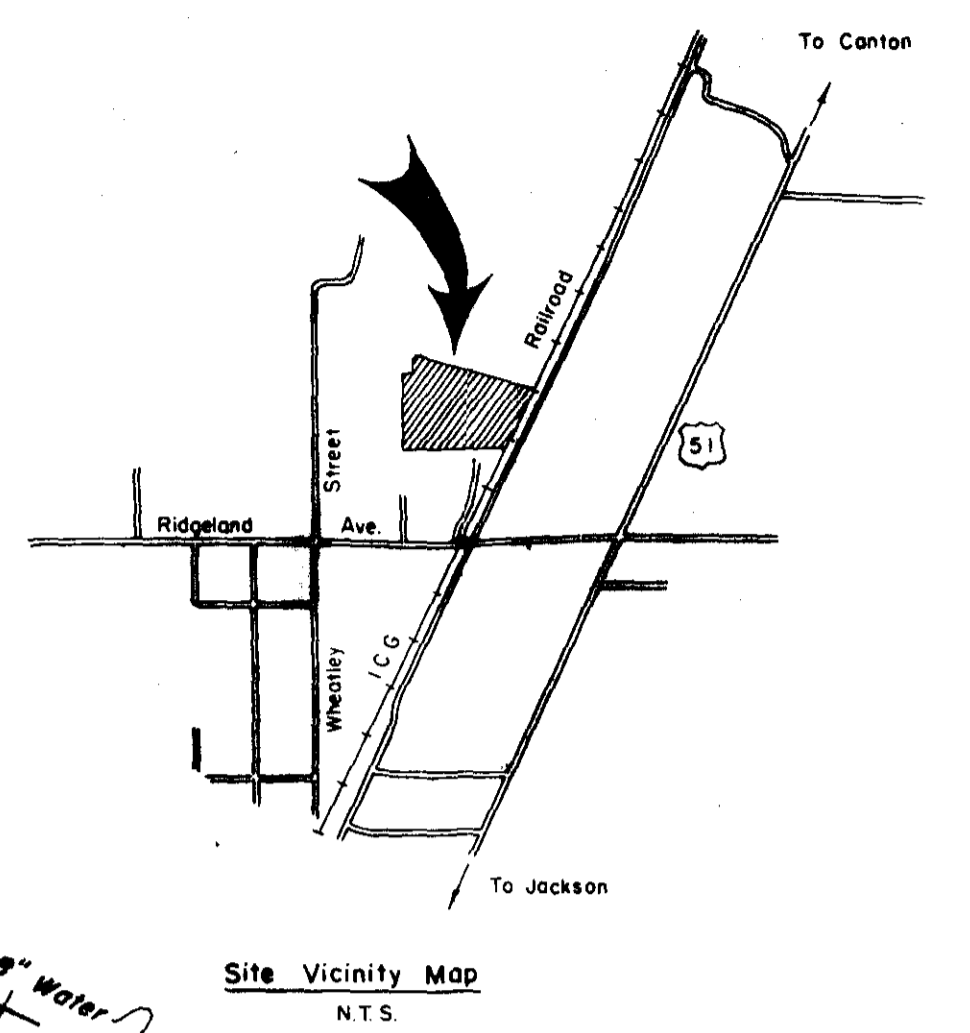
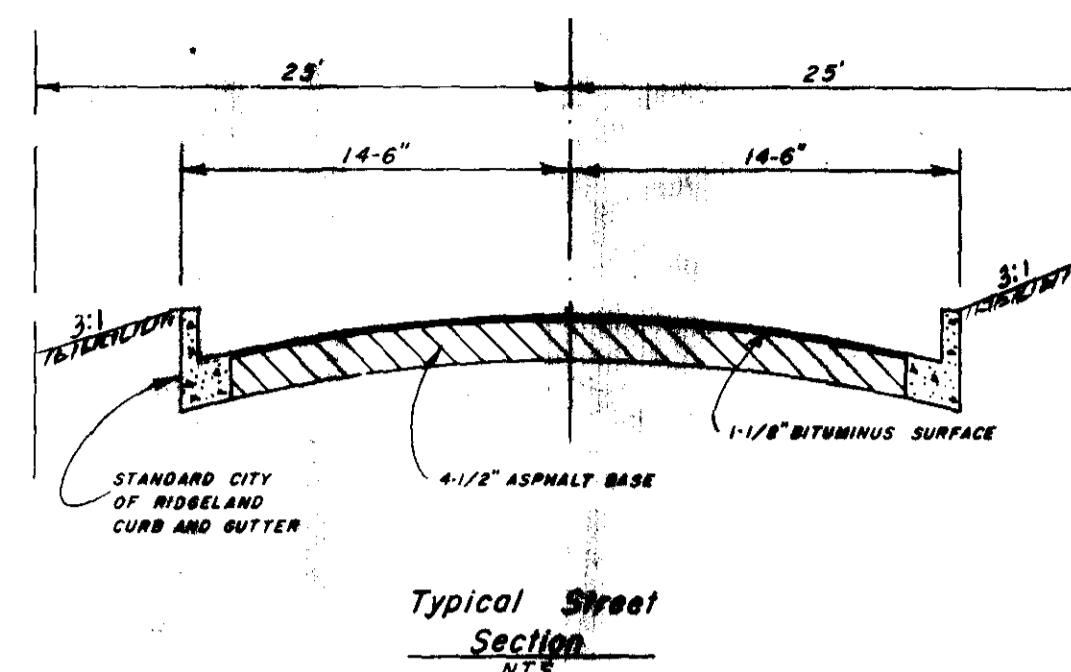
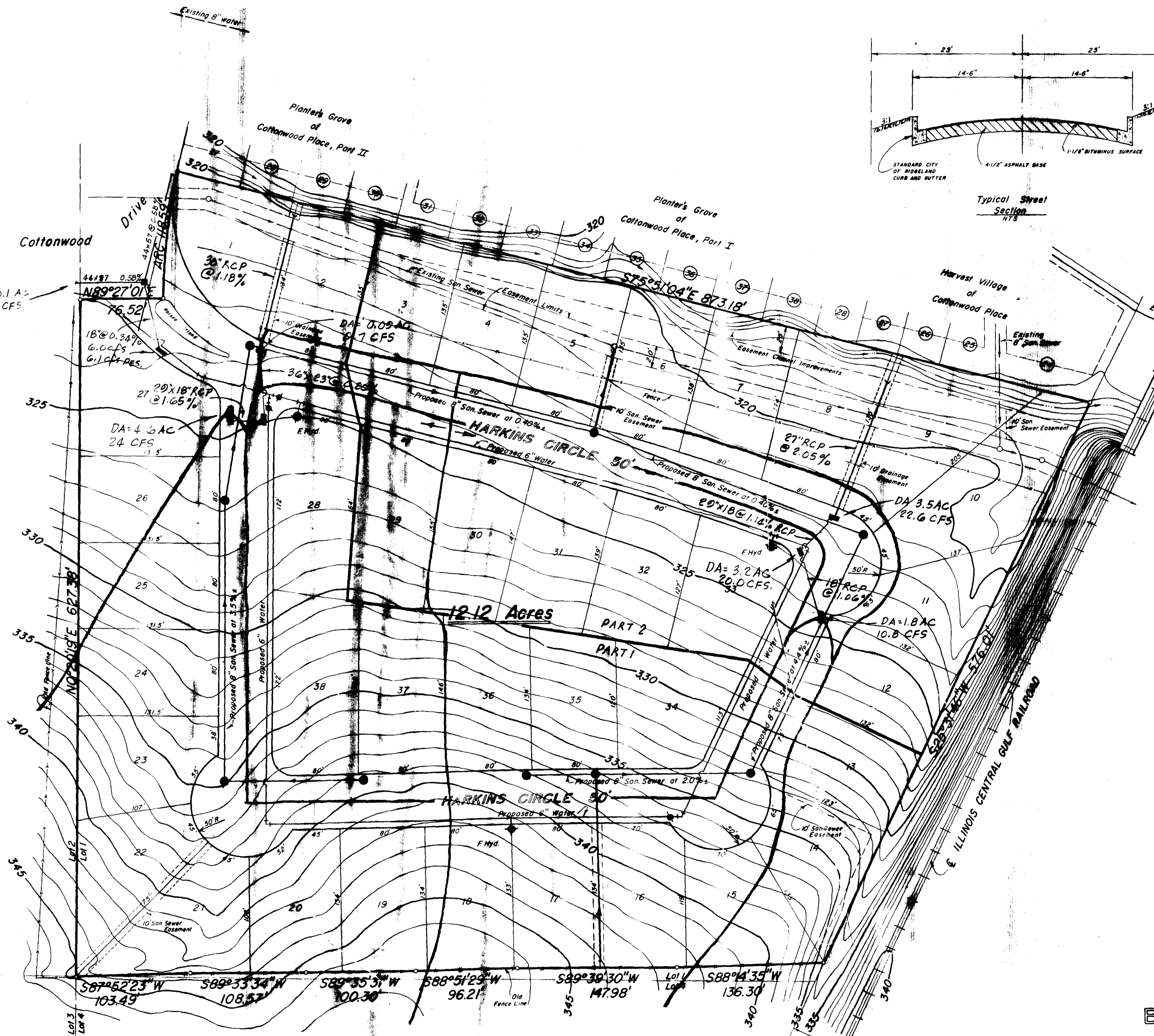
GENERAL NOTES

1. CONTRACTOR SHALL PROVIDE ANCHORING COUPLING TO WATER MAIN IN ADDITION TO STANDARD CONCRETE THRUST BLOCKS AT EACH FIRE HYDRANT.
2. UTILITY CONTRACTOR (SEWER AND WATER) WILL BE RESPONSIBLE FOR ADJUSTING ALL MANHOLE TOPS TO FINISHED GRADE.
3. UTILITY CONTRACTOR IS RESPONSIBLE FOR COMPACTION TO REQUIRED DENSITY OF ALL TRENCHES CROSSING ROADWAYS OR NEAR CURB LINES.
4. ALL STORM WATER STRUCTURES HAVE BEEN DESIGNED TO CARRY THE PEAK RUN-OFF EXPECTED FOLLOWING A RAINFALL OF AN INTENSITY AND DURATION RECURRING ONLY ONCE IN 25 YEARS WITH AN URBANIZATION FACTOR OF 50%.
5. ALL SANITARY SEWER PIPE MAY BE A.B.S. "TRUSS" PIPE CONFORMING TO ASTM D-2680, INSTALLED IN STRICT CONFORMANCE WITH MANUFACTURER'S INSTALLATION REQUIREMENTS.
6. ALL SANITARY SEWER MANHOLES WILL BE WATERPROOFED.
7. MINIMUM BEDDING FOR ALL SANITARY SEWER PIPING SHALL BE METHOD "A" OF CLASS "C" BEDDING. (SHAPED SUBGRADE)
8. ALL WATER PIPE SHALL BE CLASS 150, PVC, AWWA C-900.
9. ALL CONSTRUCTION SHALL BE DONE IN STRICT CONFORMANCE WITH THE CITY OF RIDGELAND'S STANDARD SPECIFICATIONS.



TYPICAL CURB DETAIL
NOT TO SCALE

NOTE:
NO WATER PIPE INSTALLATION WILL BE ACCEPTED IF THE LEAKAGE IS GREATER THAN THAT DETERMINED BY THE FOLLOWING FORMULA:
 $L = (SD)^2$, WHERE L=ALLOWABLE LEAKAGE IN GAL/HR., S= LENGTH IN FEET, D= NOMINAL DIA. OF PIPE IN INCHES.
P= AVERAGE PRESSURE DURING TEST, PSI GAUGE. IN NO CASE SHALL THE LENGTH OF THE TEST BE LESS THAN FOUR (4) HOURS AFTER THE LINE HAS BEEN BROUGHT TO FULL TEST PRESSURE.



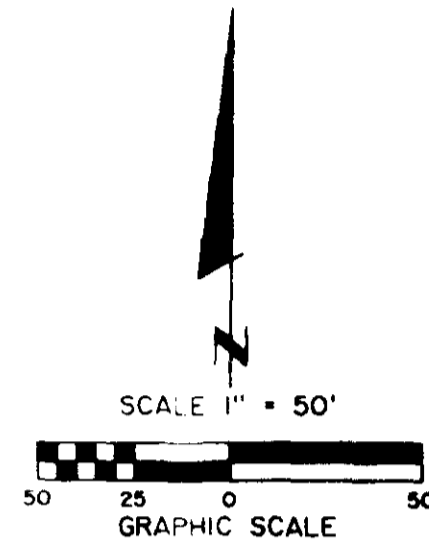
General Notes:

1. Ansley H. Harkins, Developer
5760 I-55 North
Jackson, Mississippi 39211
2. All Elevations Shown Are in Reference To NGVD
3. Ratio Of Mathematical Closure Is 1:68,970
4. All Partial Cut-De-Sacs Will Have A R.O.W. Radius Of 50' And A Radius To Back Of Curb Of 41.5'
5. According To E.I.R.M. Community Panel No 2802280295 & This Property In Zone "C"
6. Present Zoning R-2 and R-4
Proposed Use R-2
7. Building Setbacks
Front 25' Min.
Side 15' Between Buildings
Rear 25' Min.
8. Variances Have Been Requested For Lots 9 and 10
9. Total Number of Proposed Lots is 38.
10. A MINIMUM VERTICAL CLEARANCE OF 18' IS REQUIRED AT ALL WATER AND SAN. SEWER CROSSINGS OR DUCTILE IRON SEWER PIPE SHALL BE INSTALLED.

BROOKWOODS
Sited in Lot 1, Block 12 and Lot 5, Block 9, Highland Colony,
Ridgeland, Madison County, Mississippi

CASE & ASSOCIATES, INC.
Registered Land Surveyors
Jackson, Miss. Scale: 1" = 50' January 30, 1989





L-1	11,502 S.F.	0.264 AC
L-2	10,771 S.F.	0.248 AC
L-3	10,800 S.F.	0.248 AC
L-4	10,800 S.F.	0.248 AC
L-5	10,871 S.F.	0.250 AC
L-6	11,166 S.F.	0.256 AC
L-7	12,564 S.F.	0.288 AC
L-8	14,231 S.F.	0.327 AC
L-9	15,489 S.F.	0.356 AC
L-10	10,652 S.F.	0.245 AC
L-11	10,560 S.F.	0.242 AC
L-12	10,521 S.F.	0.242 AC
L-13	10,856 S.F.	0.249 AC
L-14	10,902 S.F.	0.250 AC
L-15	10,740 S.F.	0.247 AC
L-16	10,722 S.F.	0.247 AC
L-17	10,720 S.F.	0.246 AC
L-18	10,692 S.F.	0.245 AC
L-19	10,500 S.F.	0.241 AC
L-20	11,540 S.F.	0.265 AC
L-21	10,924 S.F.	0.251 AC
L-22	10,692 S.F.	0.245 AC
L-23	10,520 S.F.	0.242 AC
L-24	10,520 S.F.	0.242 AC
L-25	10,520 S.F.	0.242 AC
L-26	13,520 S.F.	0.310 AC
L-27	12,306 S.F.	0.283 AC
L-28	12,034 S.F.	0.276 AC
L-29	11,030 S.F.	0.253 AC
L-30	11,595 S.F.	0.266 AC
L-31	10,590 S.F.	0.243 AC
L-32	10,500 S.F.	0.241 AC
L-33	10,500 S.F.	0.241 AC
L-34	11,187 S.F.	0.257 AC
L-35	12,283 S.F.	0.282 AC
L-36	13,257 S.F.	0.304 AC
L-37	429,736 S.F.	9.870 AC
STREET	98,193 S.F.	2.254 AC
BT	98,193 S.F.	2.254 AC
TO	528,129 S.F.	12.124 AC
SUBD 'N	528,129 S.F.	12.124 AC

GEOMETRIC LAYOUT
BROOKWOODS SUBDIVISION

DATE: _____
 BY: _____
 SURVEYED _____
 PLOTTED _____
 CHECKED _____
 NOTE BOOK NO. _____
 PART OF WAY CHECKED _____

DATE: _____
 BY: _____
 SURVEYED _____
 PLOTTED _____
 CHECKED _____
 NOTE BOOK NO. _____
 STRUCTURE NOTATION CHVD _____

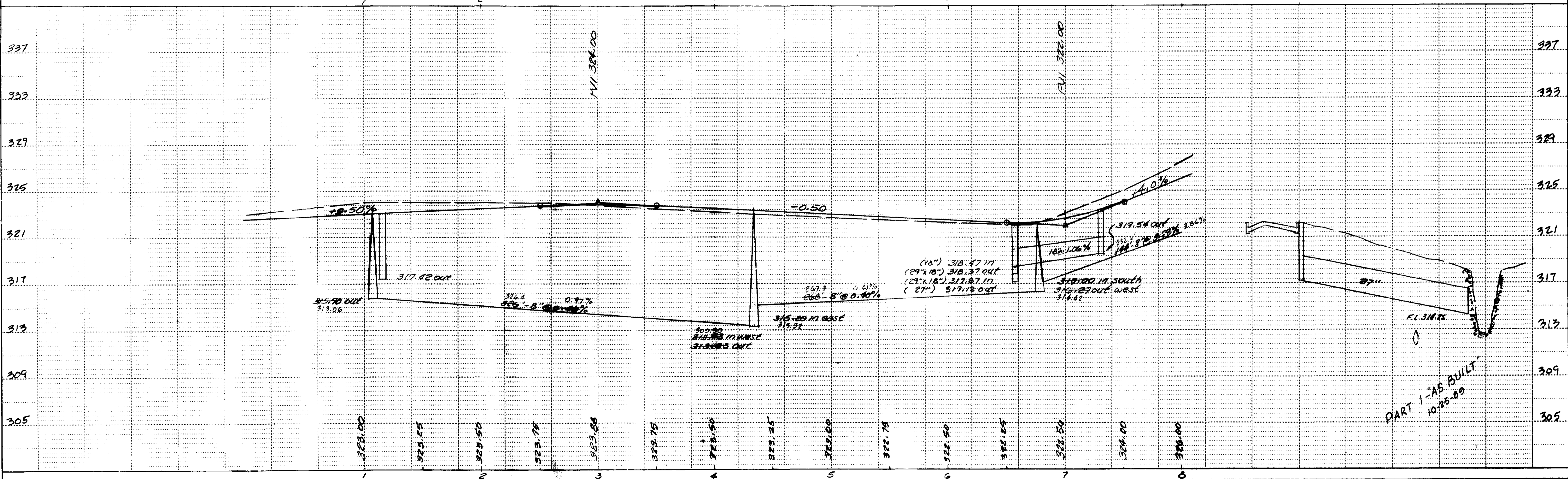
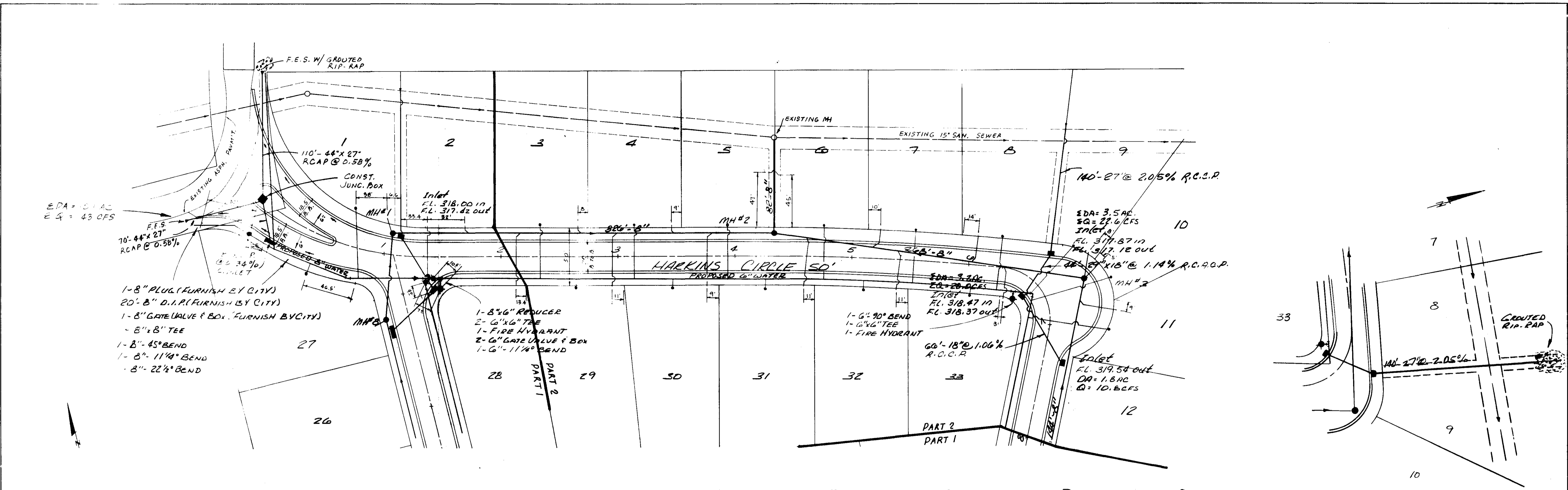
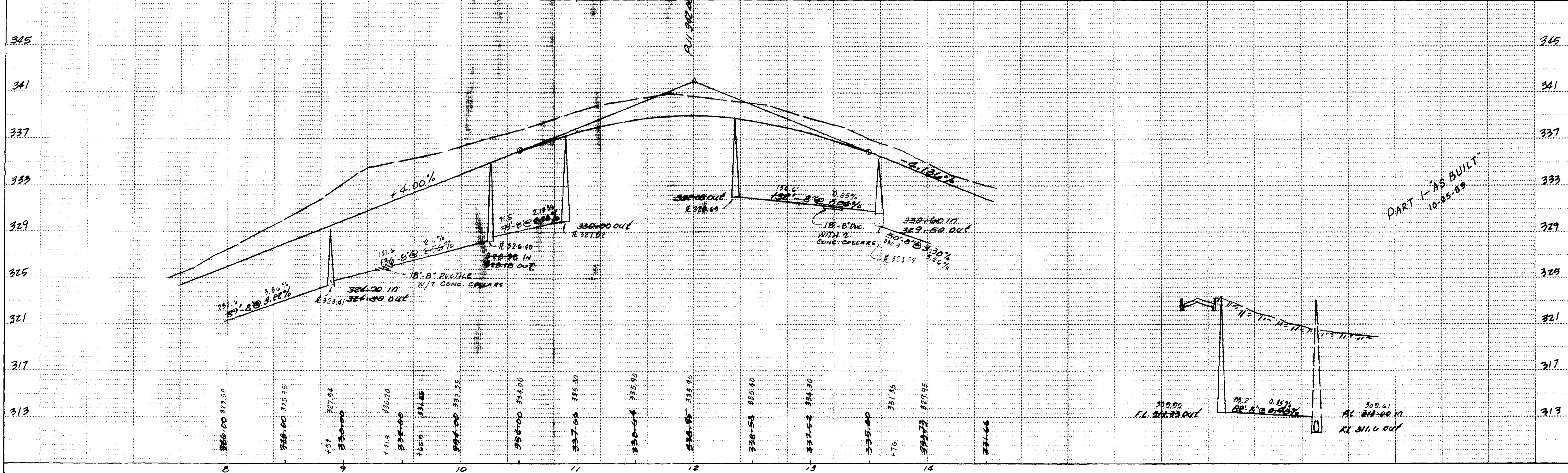
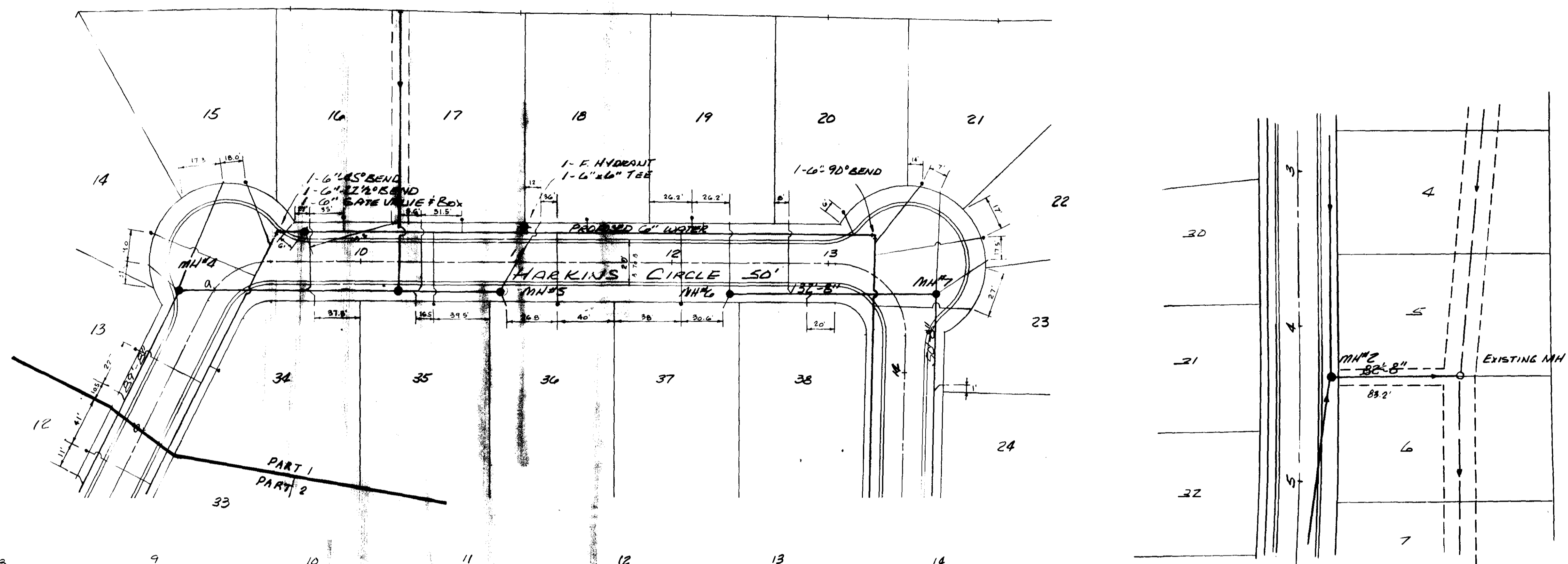


PLATE 1-SINGLE PLAN AND PROFILE FULL DOT
 PRINTED IN U.S.A.

DATE	
BY	
DESIGNED	
PLOTTED	
ALIGNMENT CHECKED	
NOTE BOOK	
NO.	

DATE	
BY	
SURVEYED	
GRADES CHECKED	
STRUCTURE NOTATIONS CHECKED	
NOTE BOOK	
NO.	

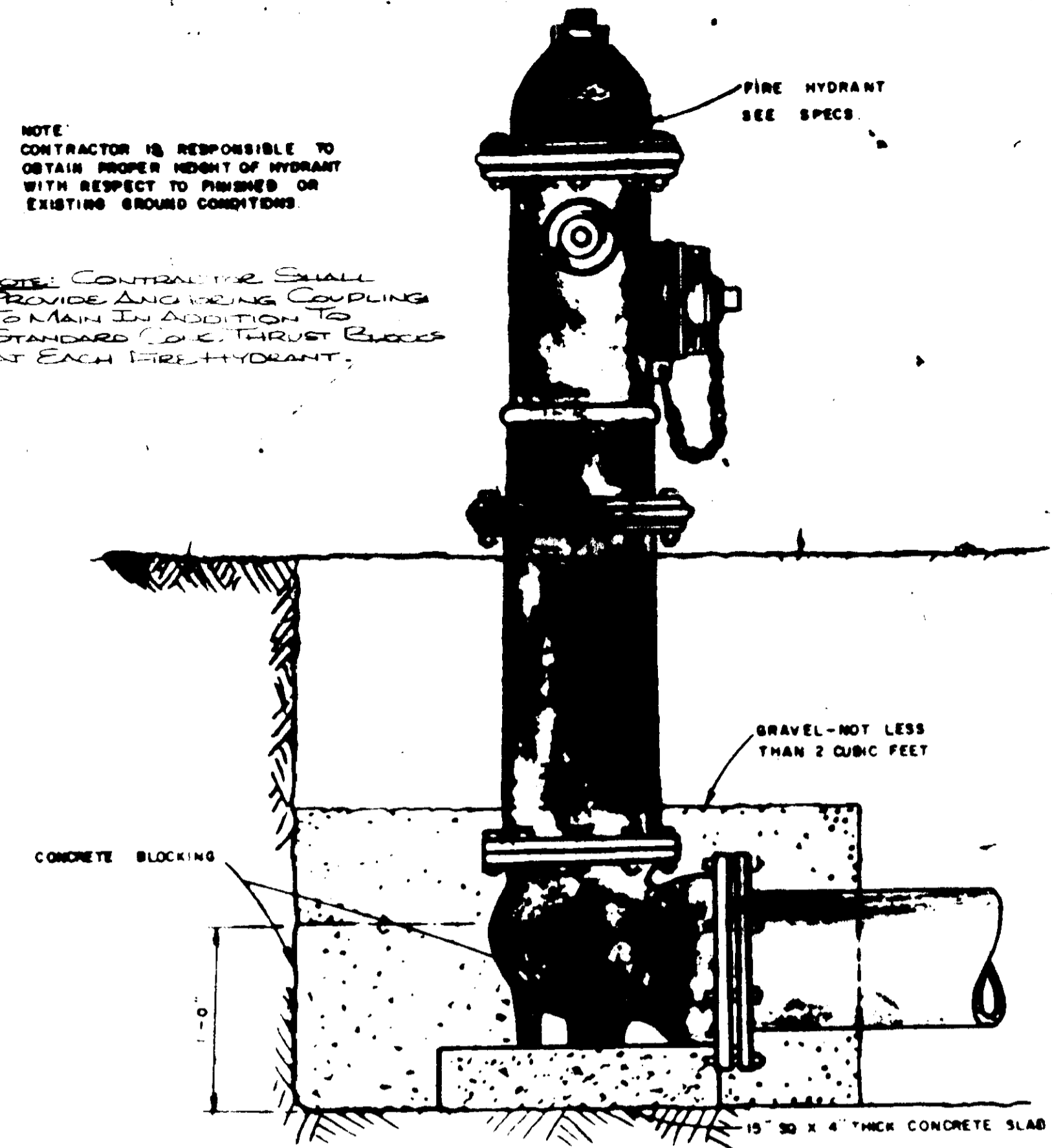


PART 1 - AS BUILT
10-25-89

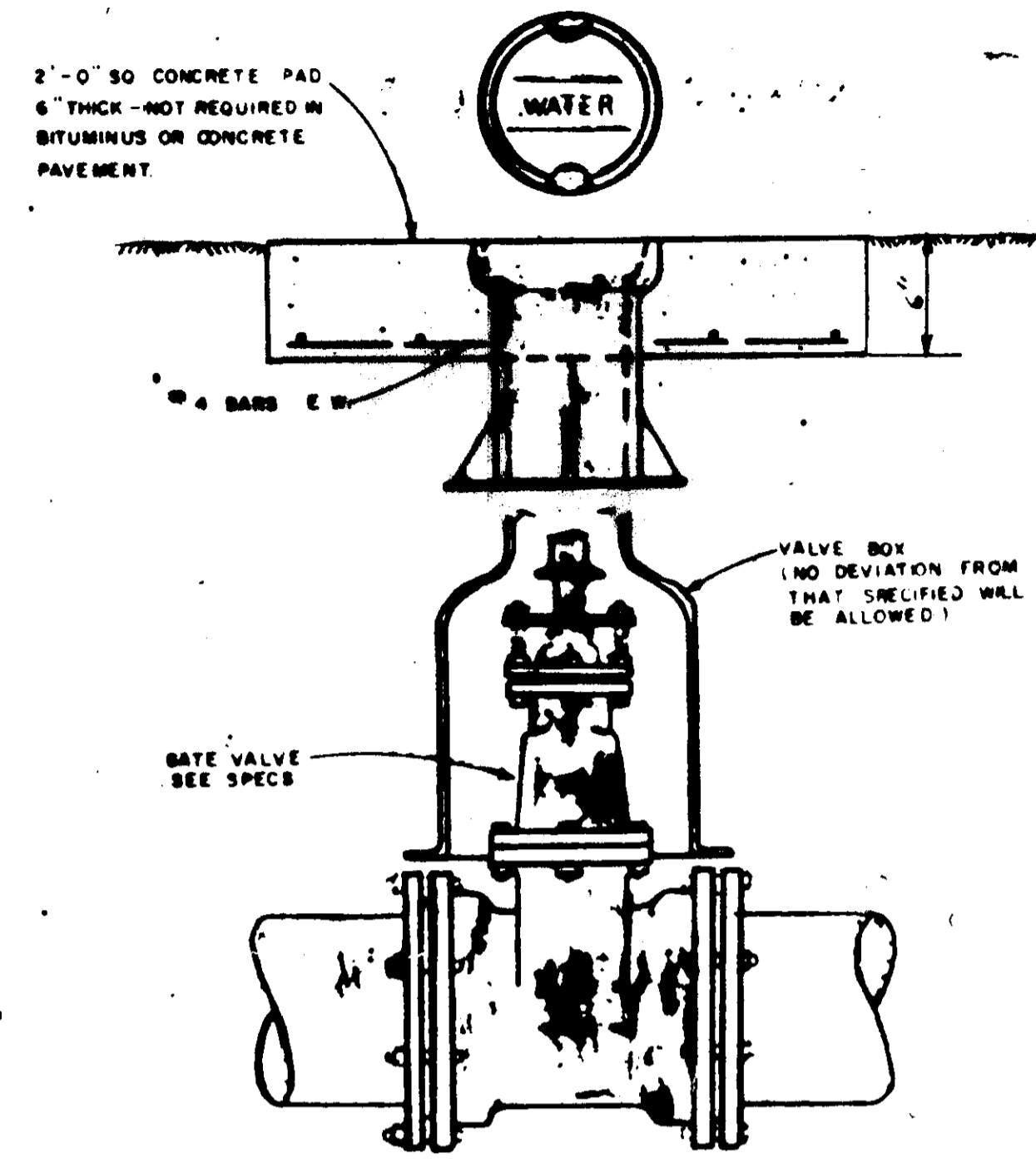
PLATE 1-SINGLE PLAN AND PROFILE-FULL DOT
IN TELEPHONE

NOTE: CONTRACTOR IS RESPONSIBLE TO OBTAIN PROPER HEIGHT OF HYDRANT WITH RESPECT TO FINISHED OR EXISTING GROUND CONDITIONS.

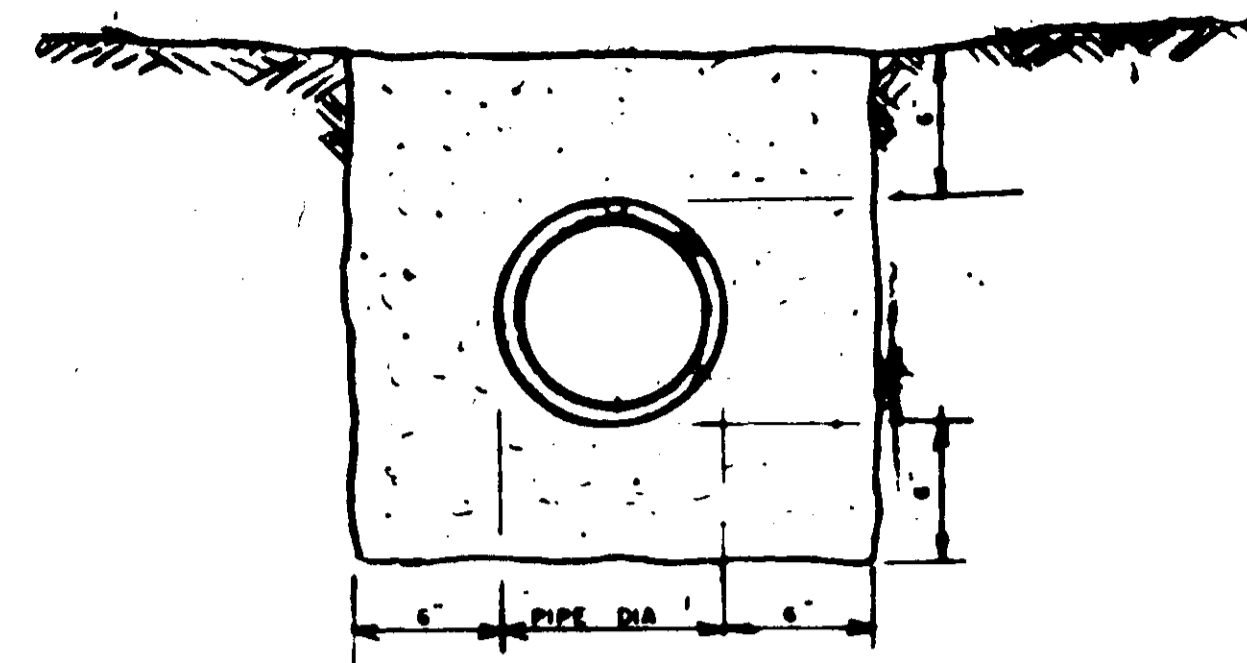
NOTE: CONTRACTOR SHALL PROVIDE ANGLE IRON COUPLING TO MAIN IN ADDITION TO STANDARD 2" THROUGH BRASS AT EACH FIRE HYDRANT.



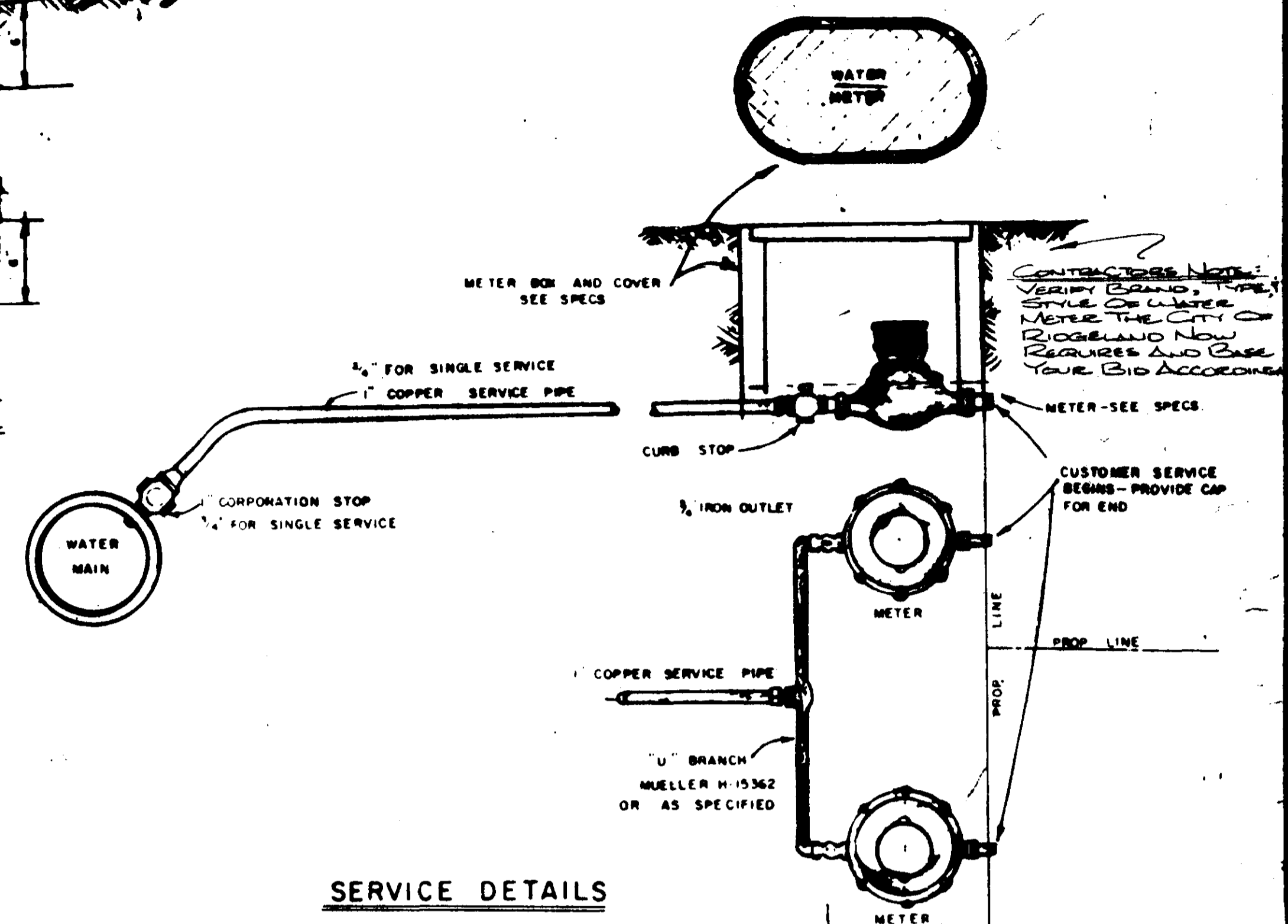
FIRE HYDRANT DETAIL



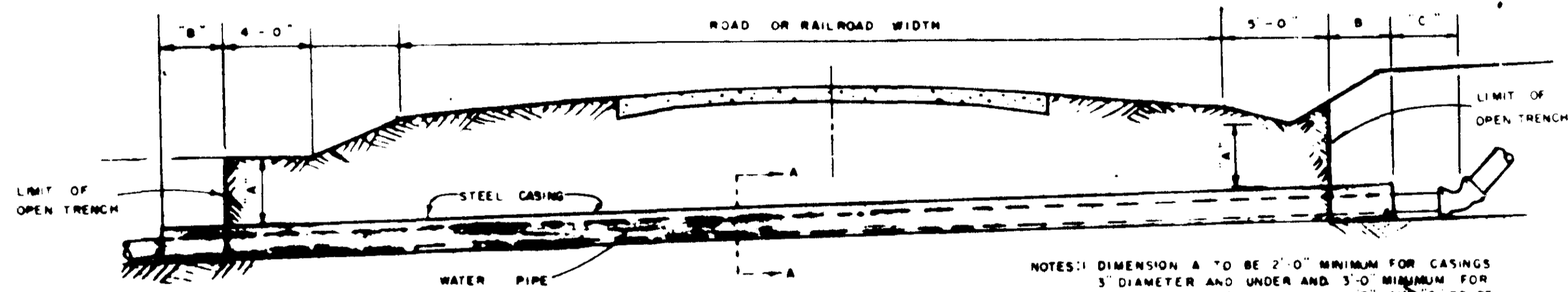
VALVE & BOX DETAIL



PIPE ENCASEMENT

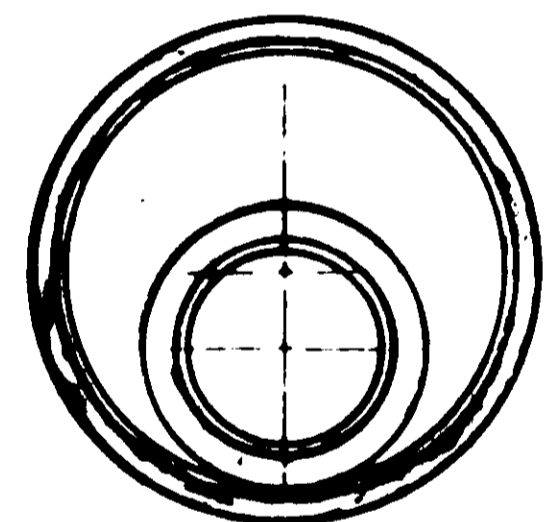


SERVICE DETAILS



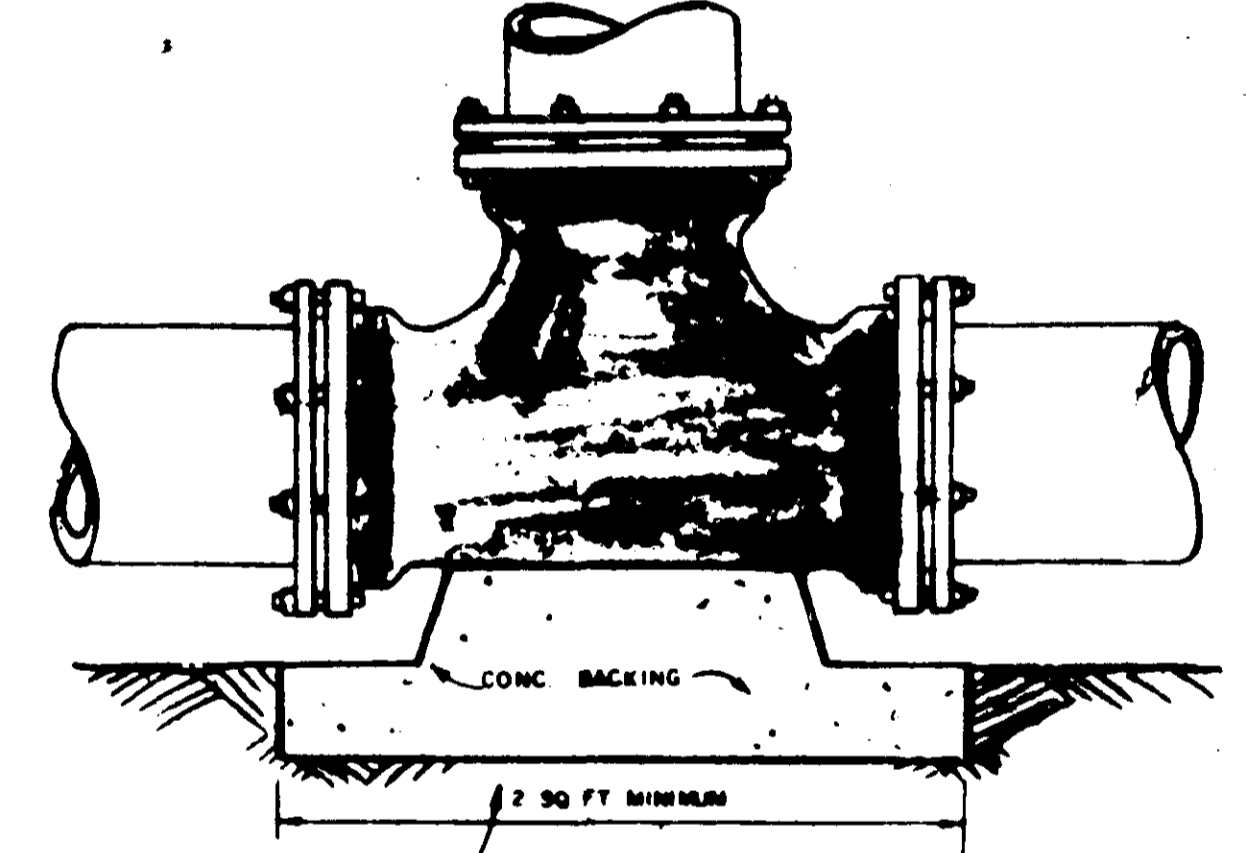
CROSSING DETAIL

NOTES:
 1. DIMENSION A TO BE 2'-0" MINIMUM FOR CASINGS 3" DIAMETER AND UNDER AND 3'-0" MINIMUM FOR CASINGS OVER 3" DIMENSIONS B' AND C' TO BE 2'-0" MINIMUM FOR LINES 3" DIAMETER AND UNDER AND 4'-0" MINIMUM FOR LINES OVER 3"
 2. ENCASEMENTS TO BE INSTALLED UNDER THE ROAD BY MEANS OF JACKING THROUGH OR BY DRY-BORING A HOLE THAT WILL RECEIVE THE CASING WITH SMALL FIT
 3. CORRUGATED METAL OR STEEL CASING PIPE OPTIONAL FOR RAILROAD CROSSINGS HIGHWAY CROSSINGS - STEEL PIPE ONLY
 4. B' DIMENSION WILL BE PAID FOR AS CIR IN CASING
 5. BORED OR JACKED CASING TO BE PAID FOR TO LIMIT OF OPEN TRENCH ONLY
 6. WHERE THERE IS CONFLICT WITH THE PLANS AND HIGHWAY AND RAILROAD CROSSING PERMITS THE APPROVED PERMITS WILL GOVERN

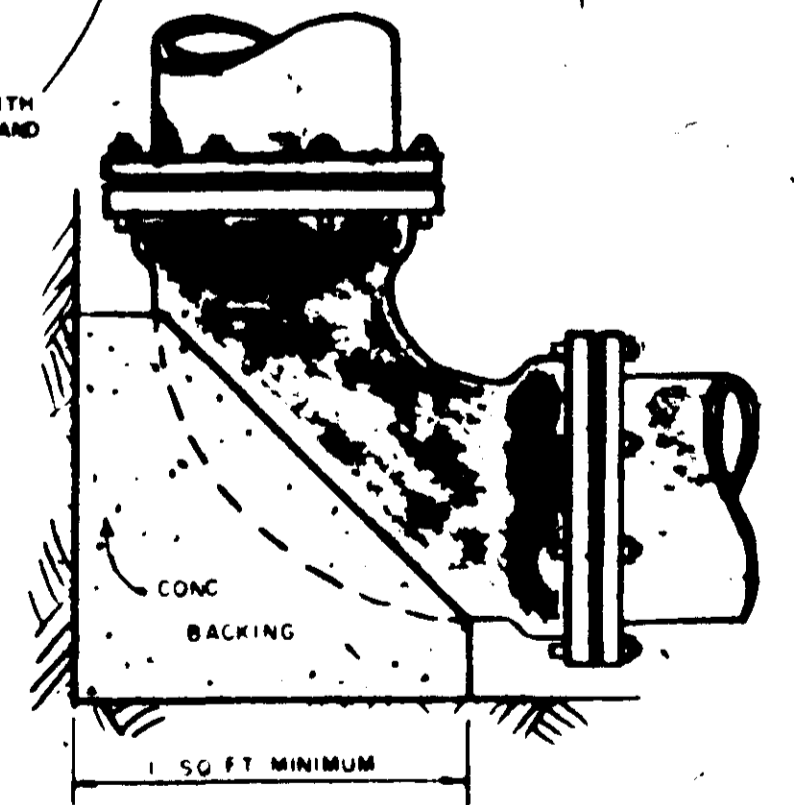


SECTION A-A

16" API SCHEDULE 10 STEEL PIPE ENCASEMENT FOR 10" PIPE

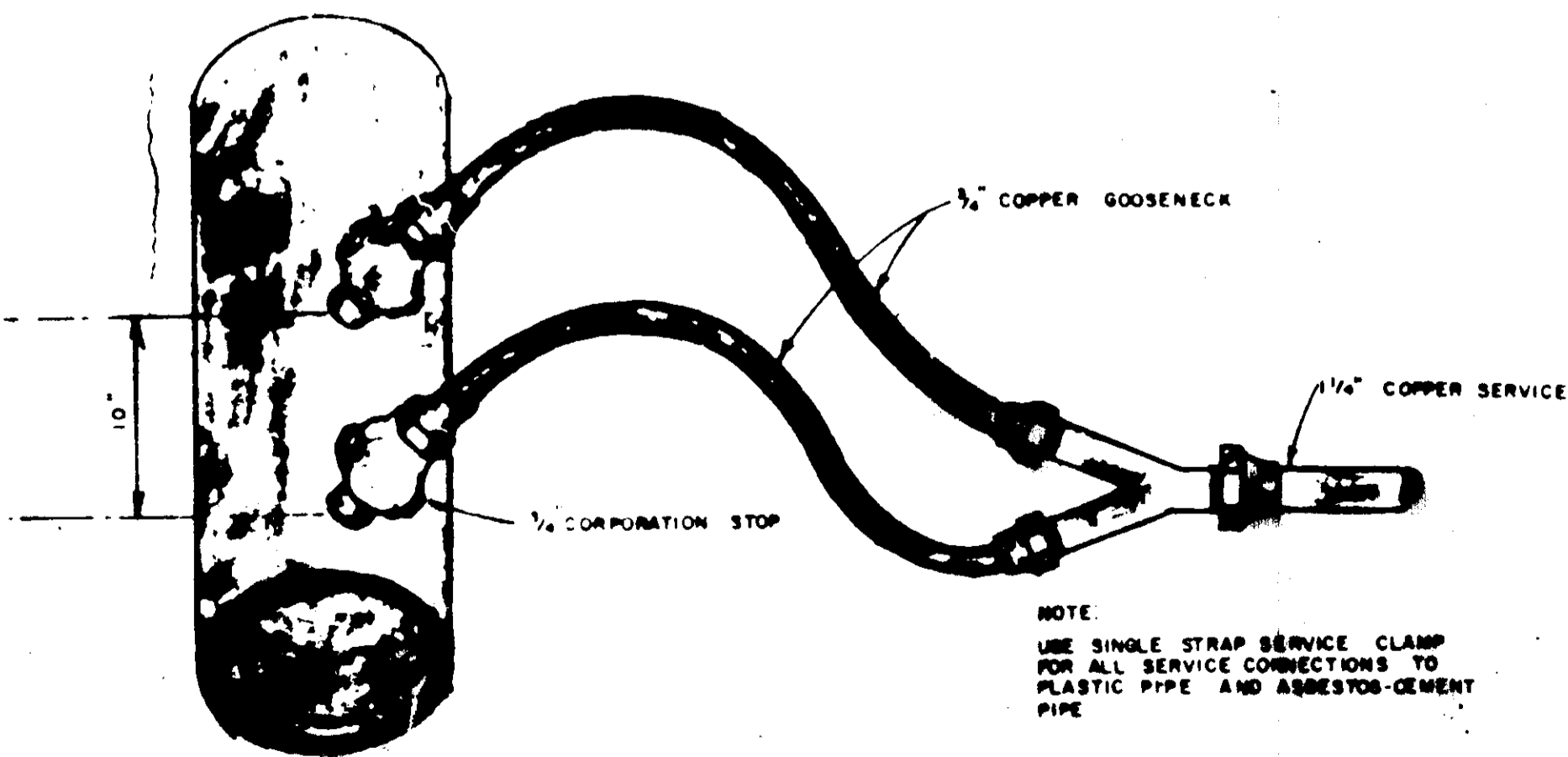


NOTE: 2'-0" FT MINIMUM AREA IN CONTACT WITH UNDISTURBED EARTH - LEAVE FITTINGS AND JOINTS ACCESSIBLE



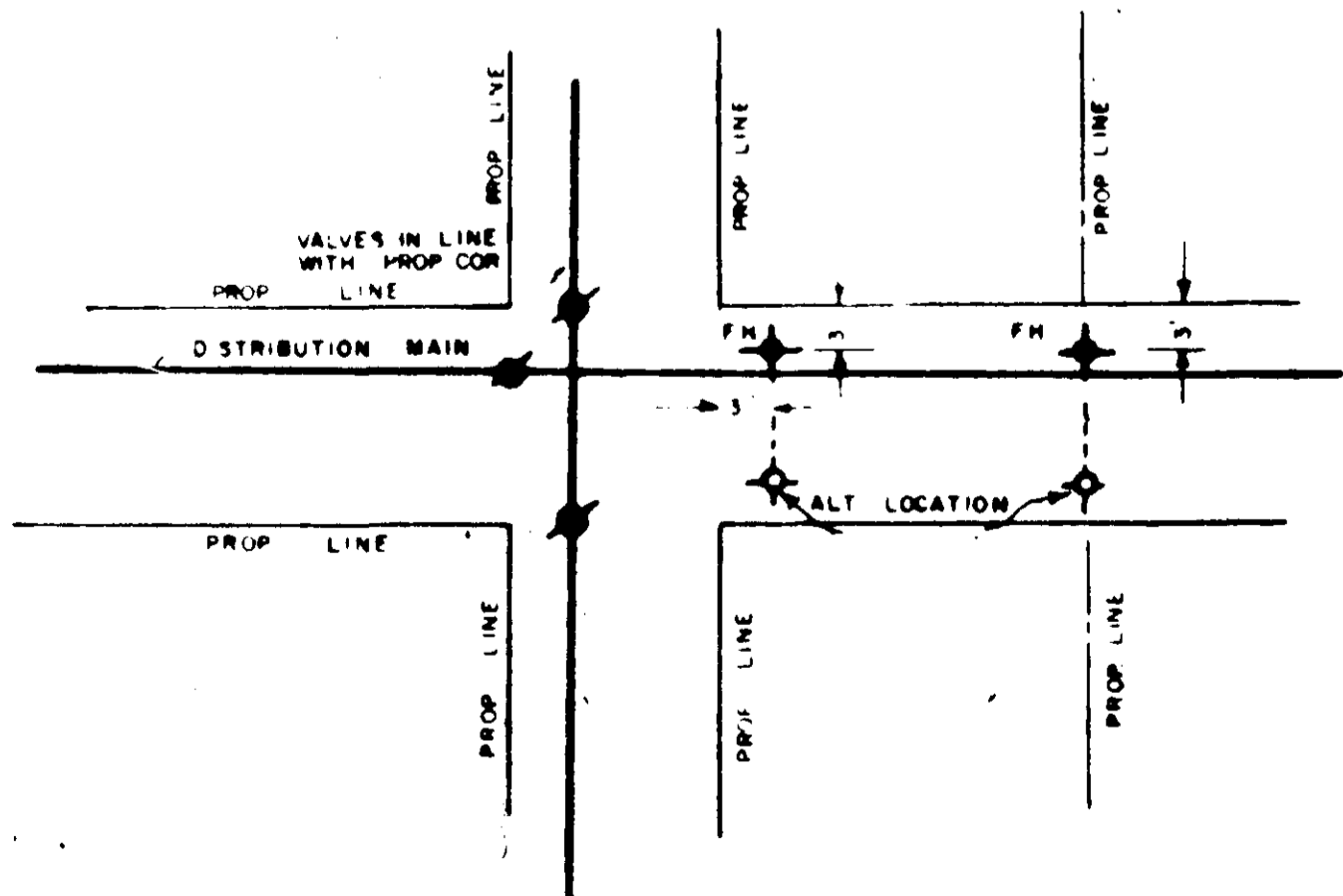
BEND & TEE DETAILS

GENERAL NOTES:
 1. NO ADDITIONAL COMPENSATION WILL BE ALLOWED FOR USE OF ADDITIONAL FITTINGS WHERE UNDERGROUND OBSTACLES ARE ENCOUNTERED, WITHOUT WRITTEN APPROVAL OF THE ENGINEER.
 2. ALL WATER LINES WITHIN ROW LIMITS OF HIGHWAYS AND RAILROADS ARE TO BE INSTALLED IN STRICT ACCORDANCE WITH THE APPROVED PERMITS.
 3. CONTRACTOR WILL COORDINATE THE LOCATION OF EXISTING UTILITIES WITH THE PROPER AUTHORITIES.



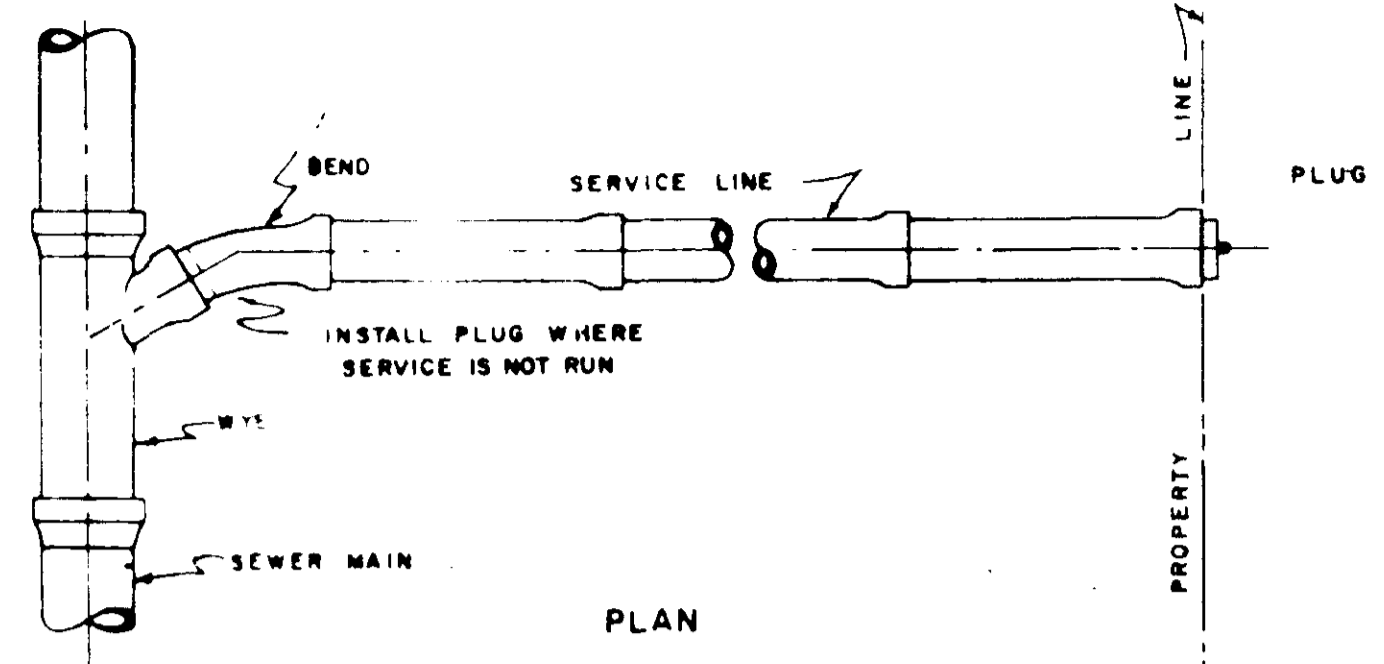
SERVICE CONNECTIONS

NOTE: USE SINGLE STRAP SERVICE CLAMP FOR ALL SERVICE CONNECTIONS TO PLASTIC PIPE AND ASBESTOS-CEMENT PIPE

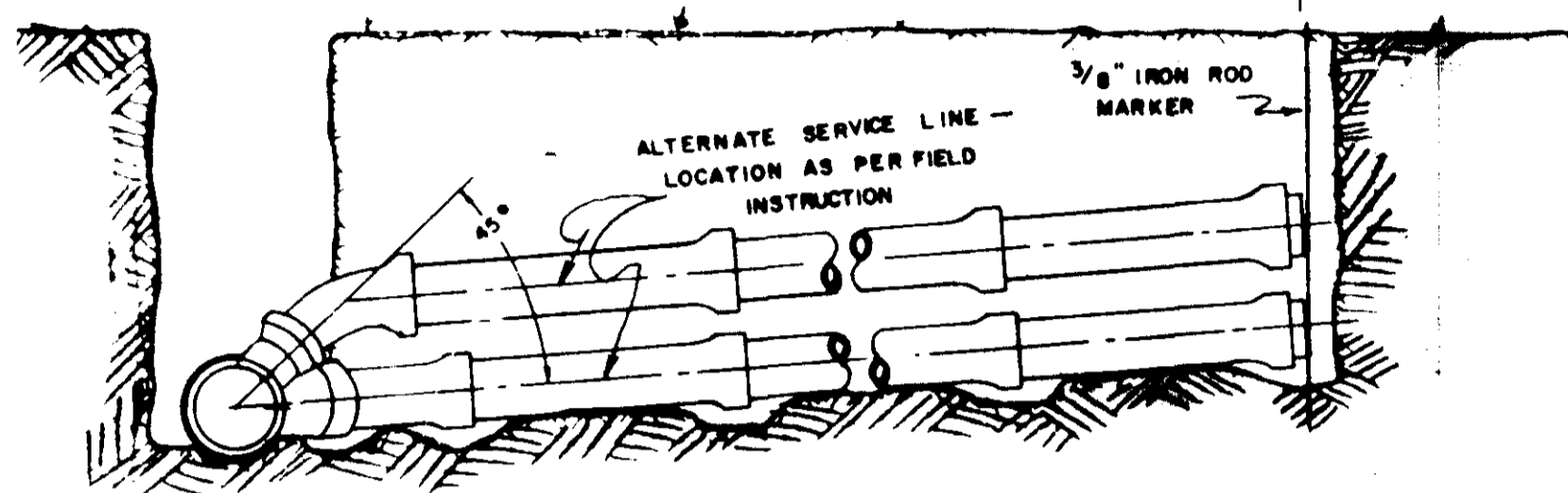


TYPICAL DETAIL OF VALVE AND HYDRANT LOCATIONS

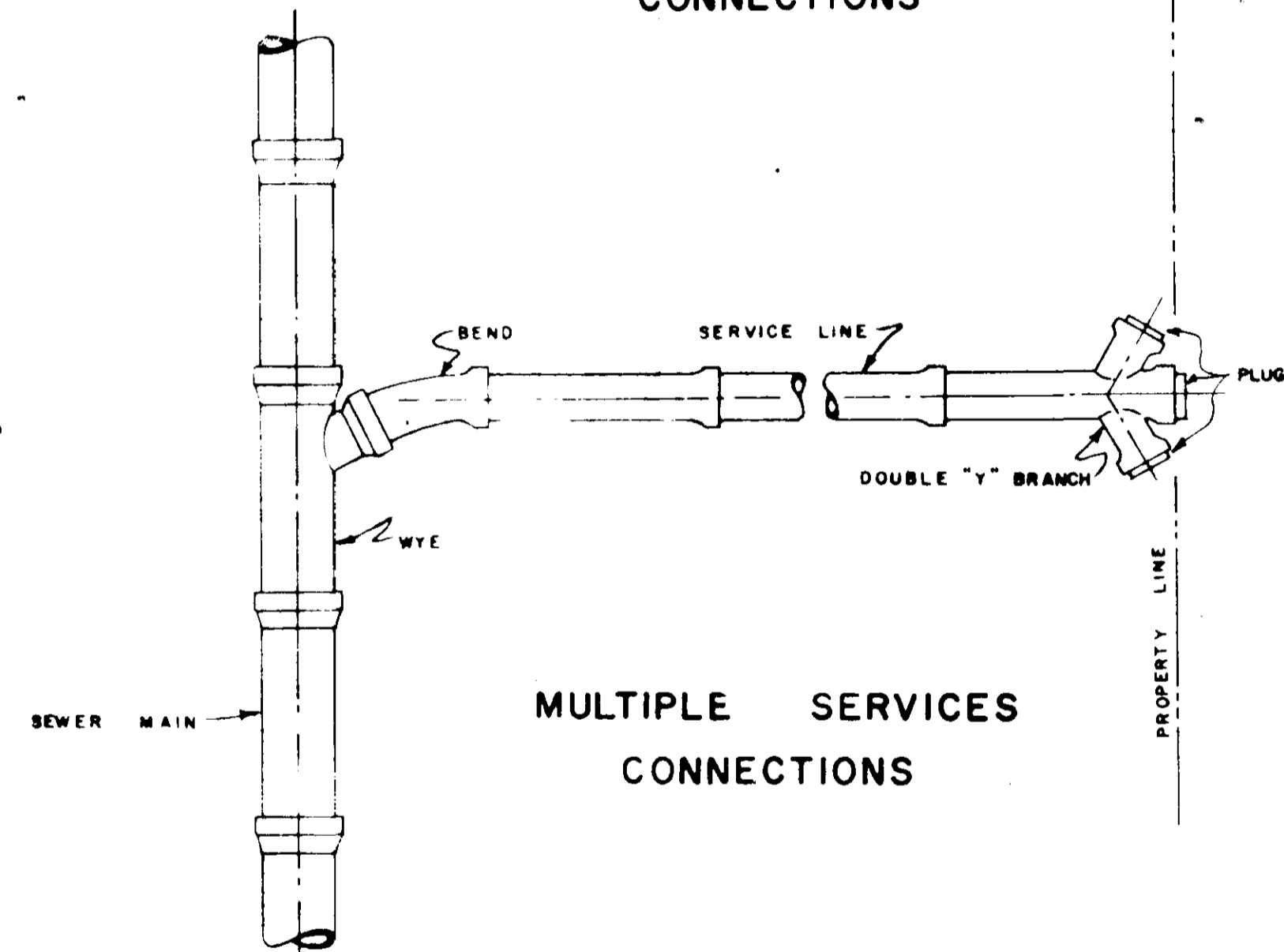
BROOKWOODS SUBDIVISION		
Standard Detail		
CASE and ASSOCIATES, INC. Jackson, Mississippi		
SCALE: 1" = 100'	DATE: _____	SHEET 7 OF _____



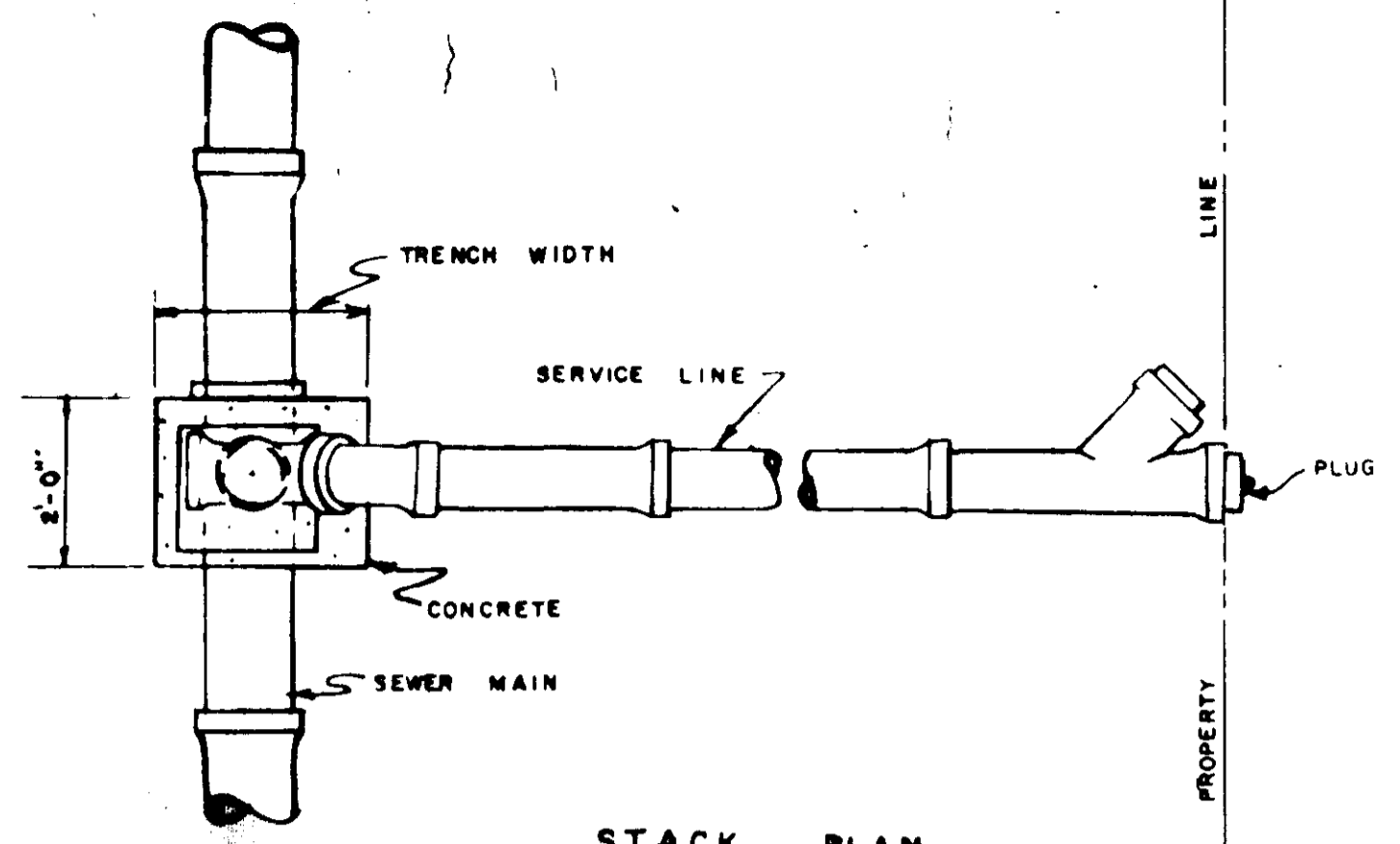
PLAN



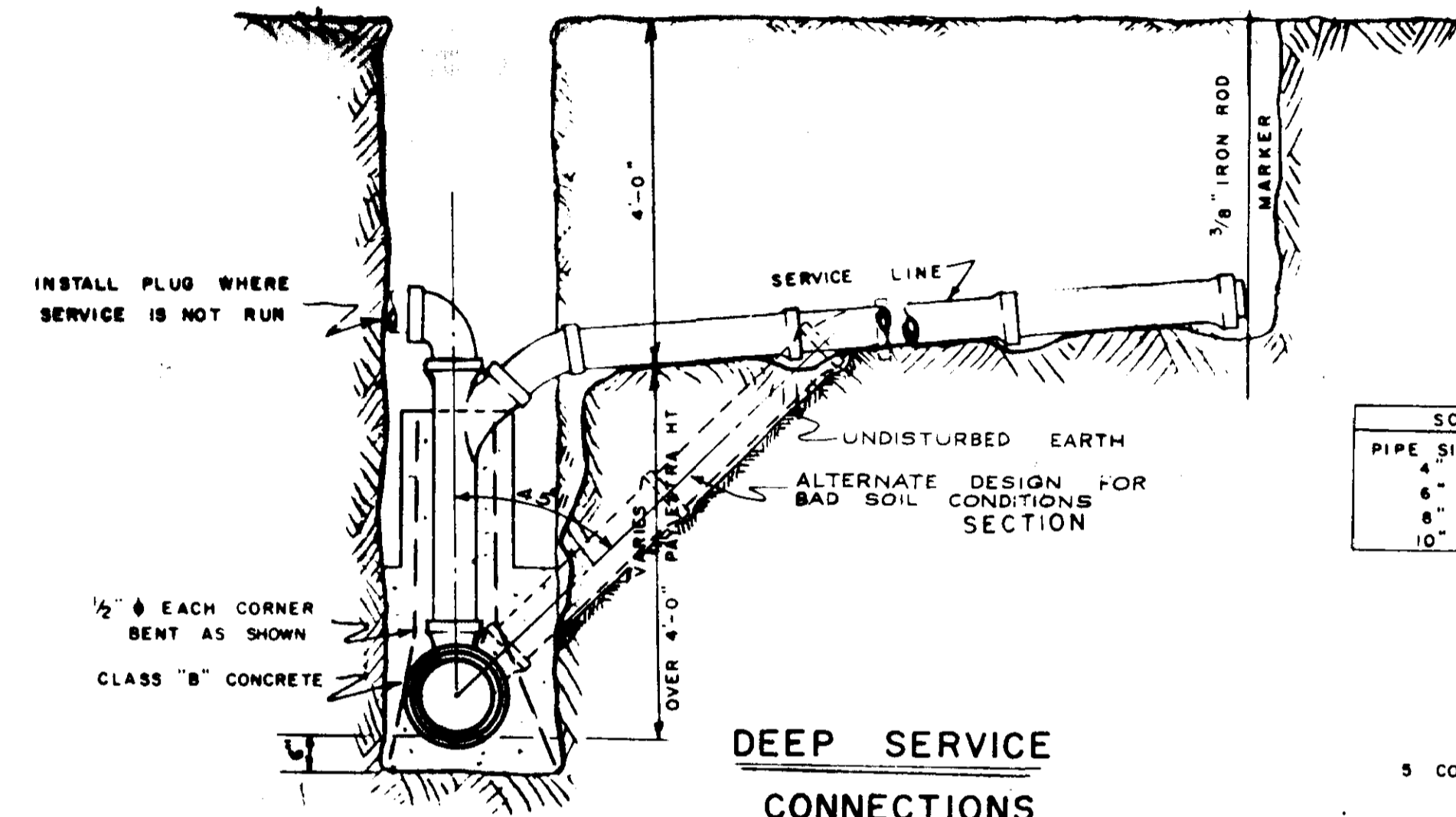
SECTION
SHALLOW SERVICES CONNECTIONS



MULTIPLE SERVICES CONNECTIONS

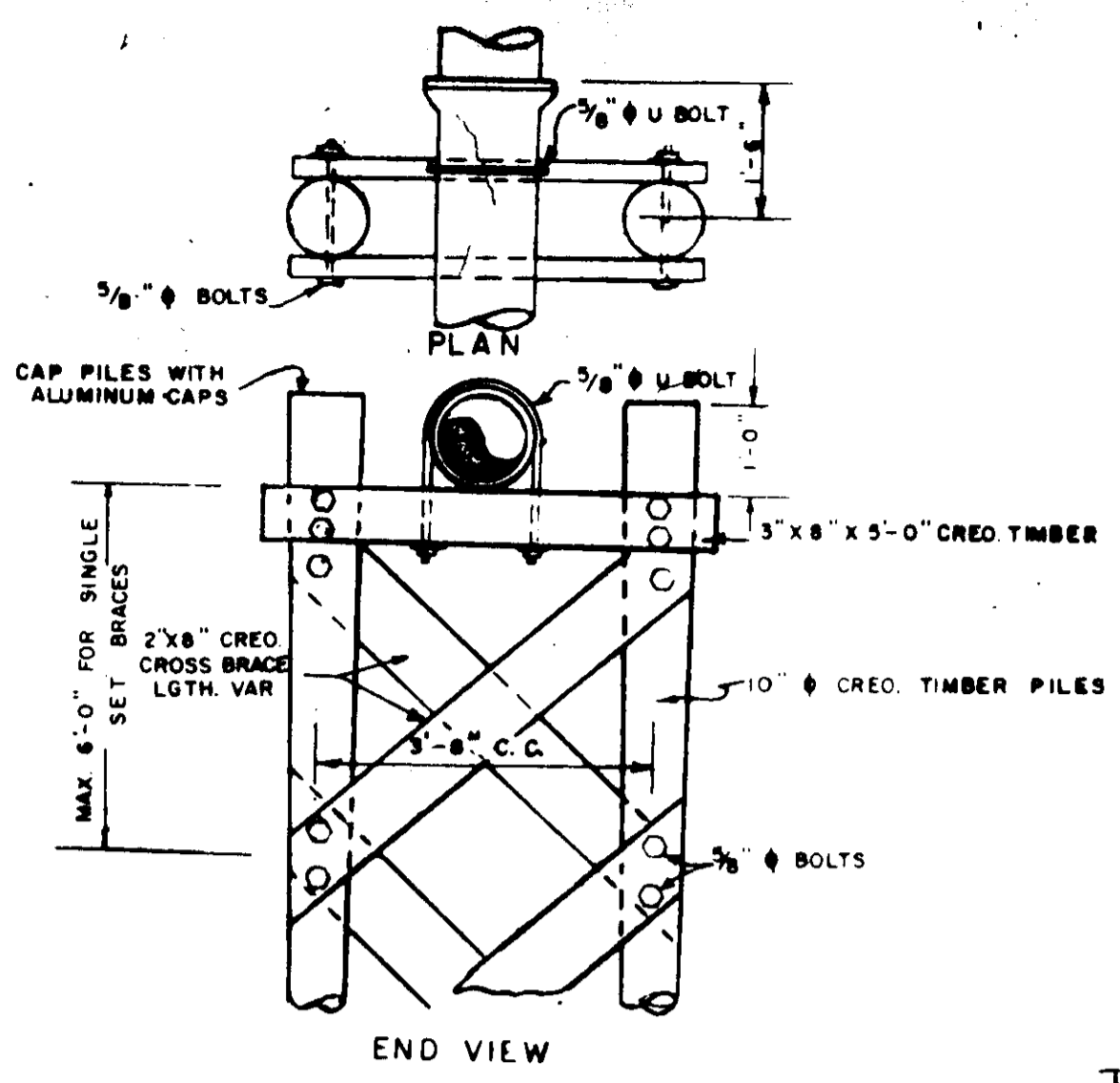


STACK PLAN



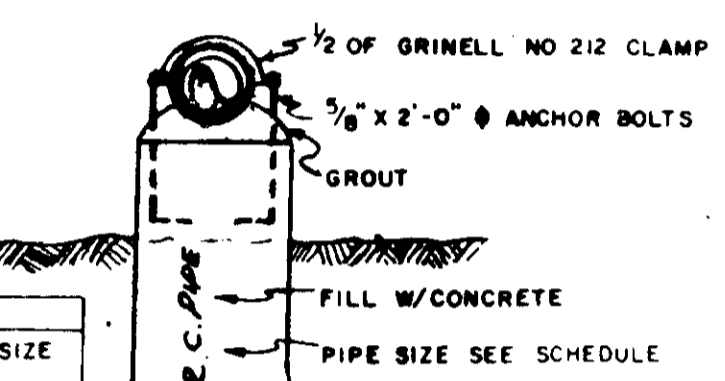
DEEP SERVICE CONNECTIONS

NOTE APPLIES TO CUTS OVER 8'-0"

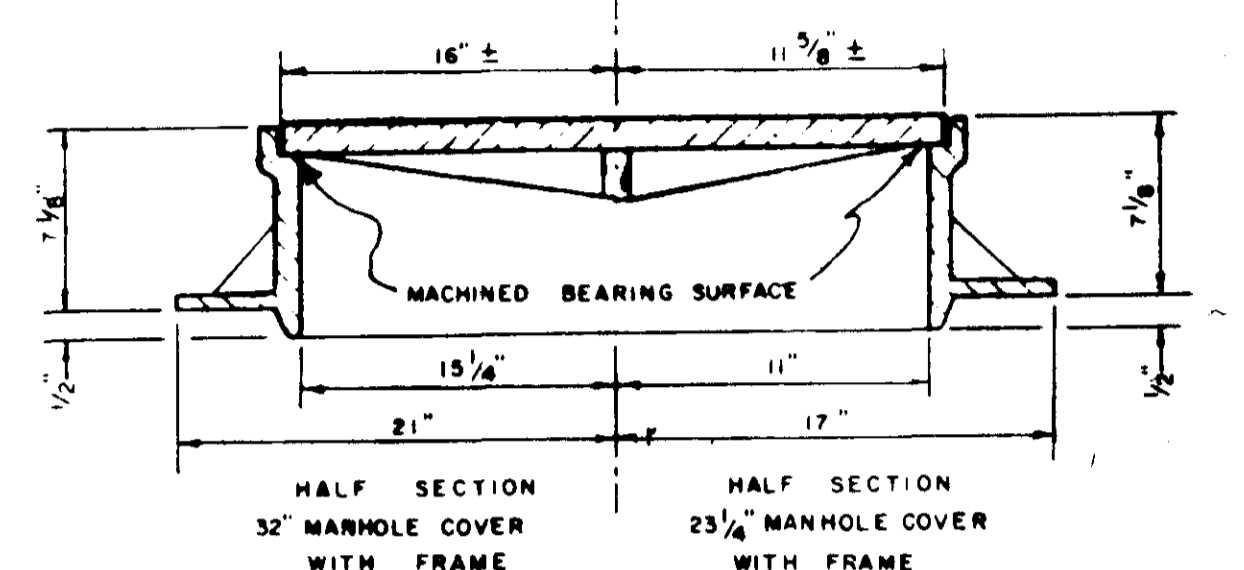
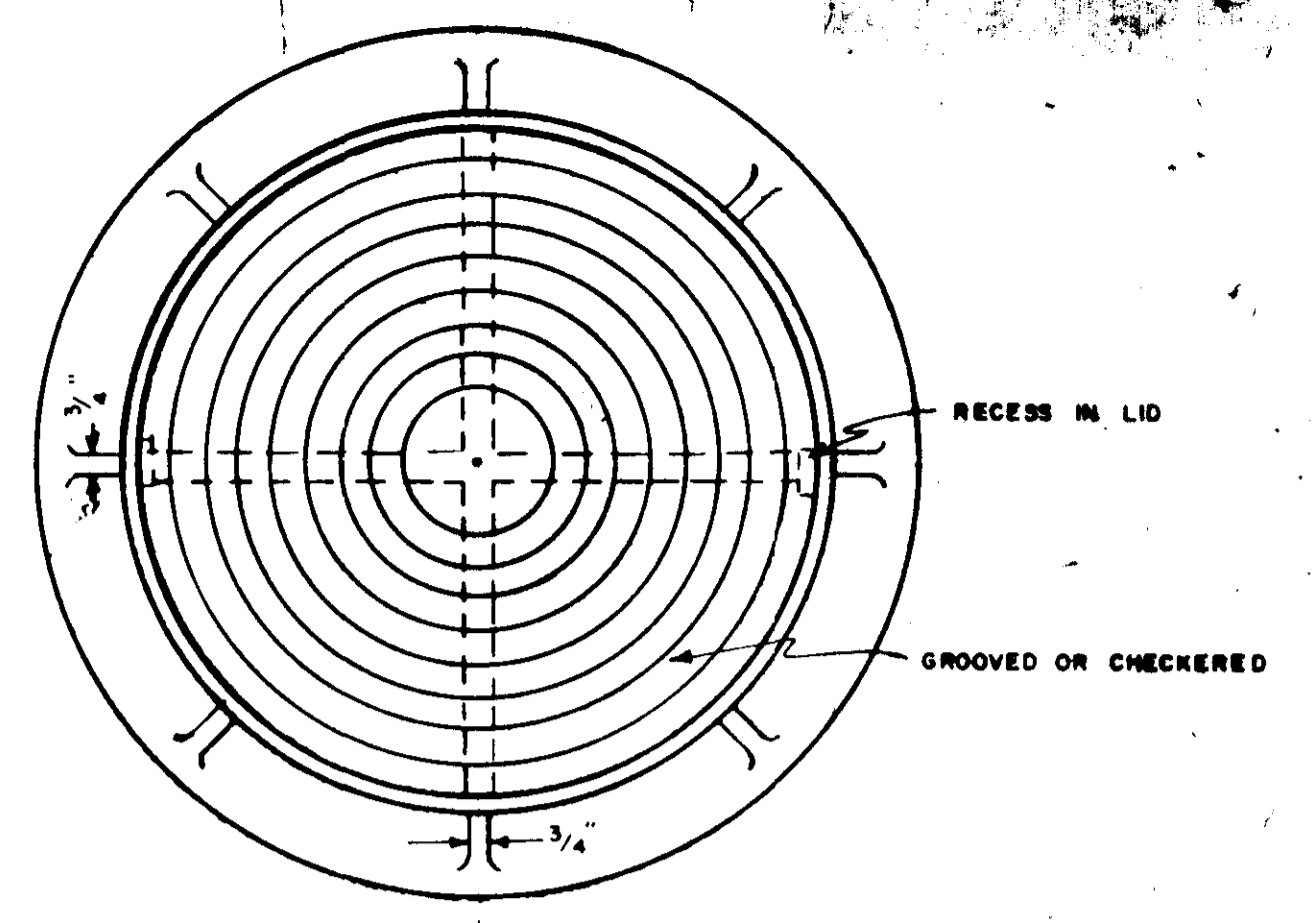


END VIEW
TYPE 1 PIERS

PIPE SIZE	RCP SIZE
4"	6"
6"	12"
8"	15"
10"	18"

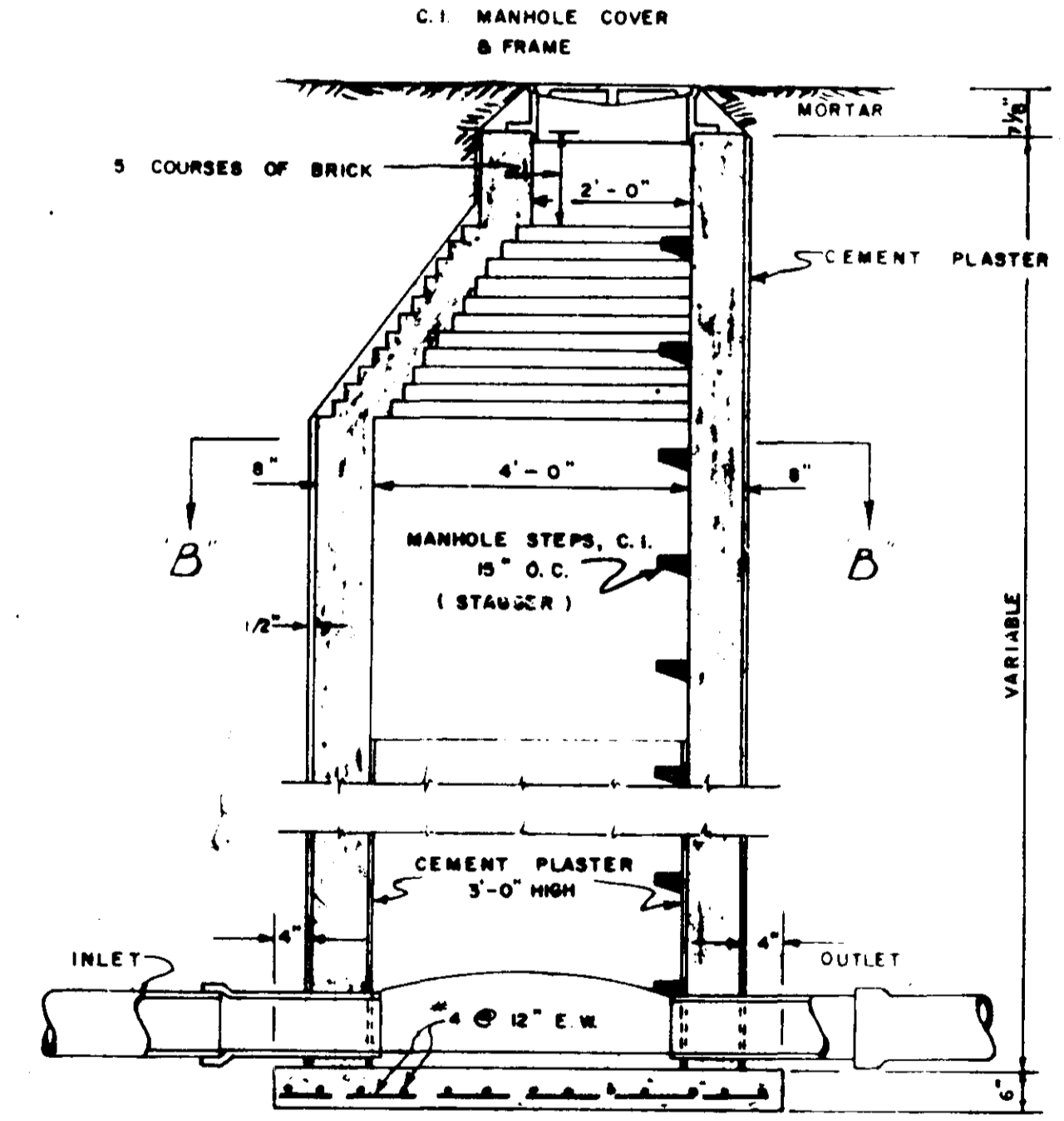


TYPE 2 PIER

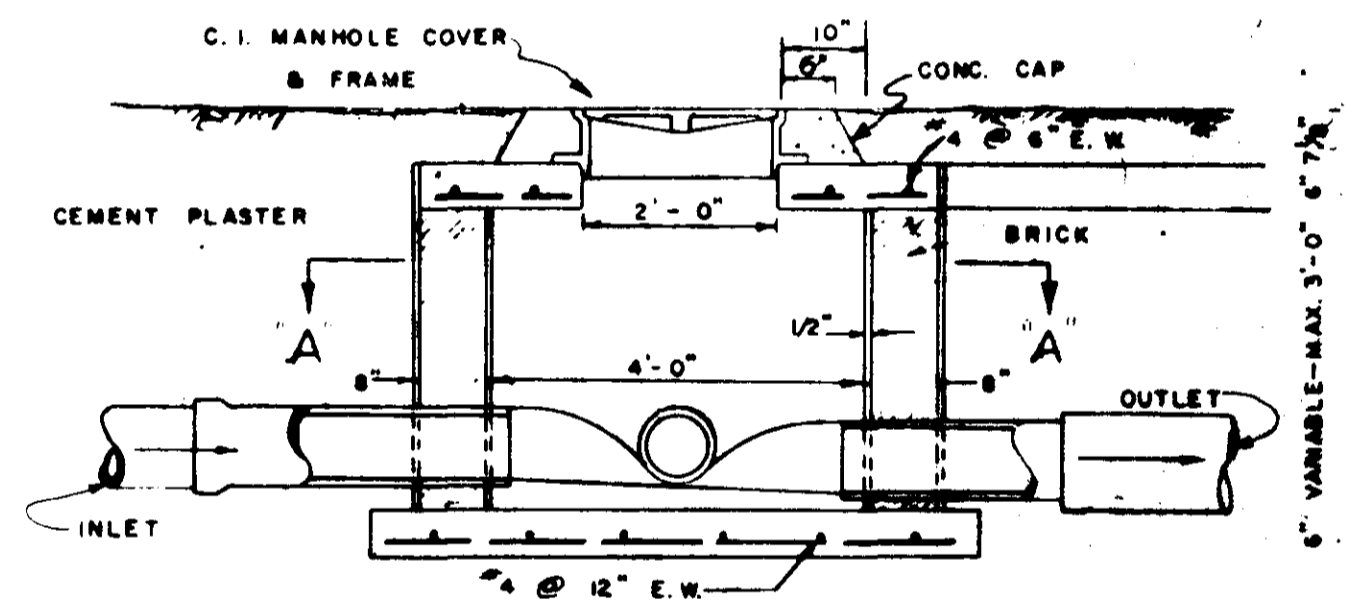


STANDARD MANHOLE FRAME & COVER

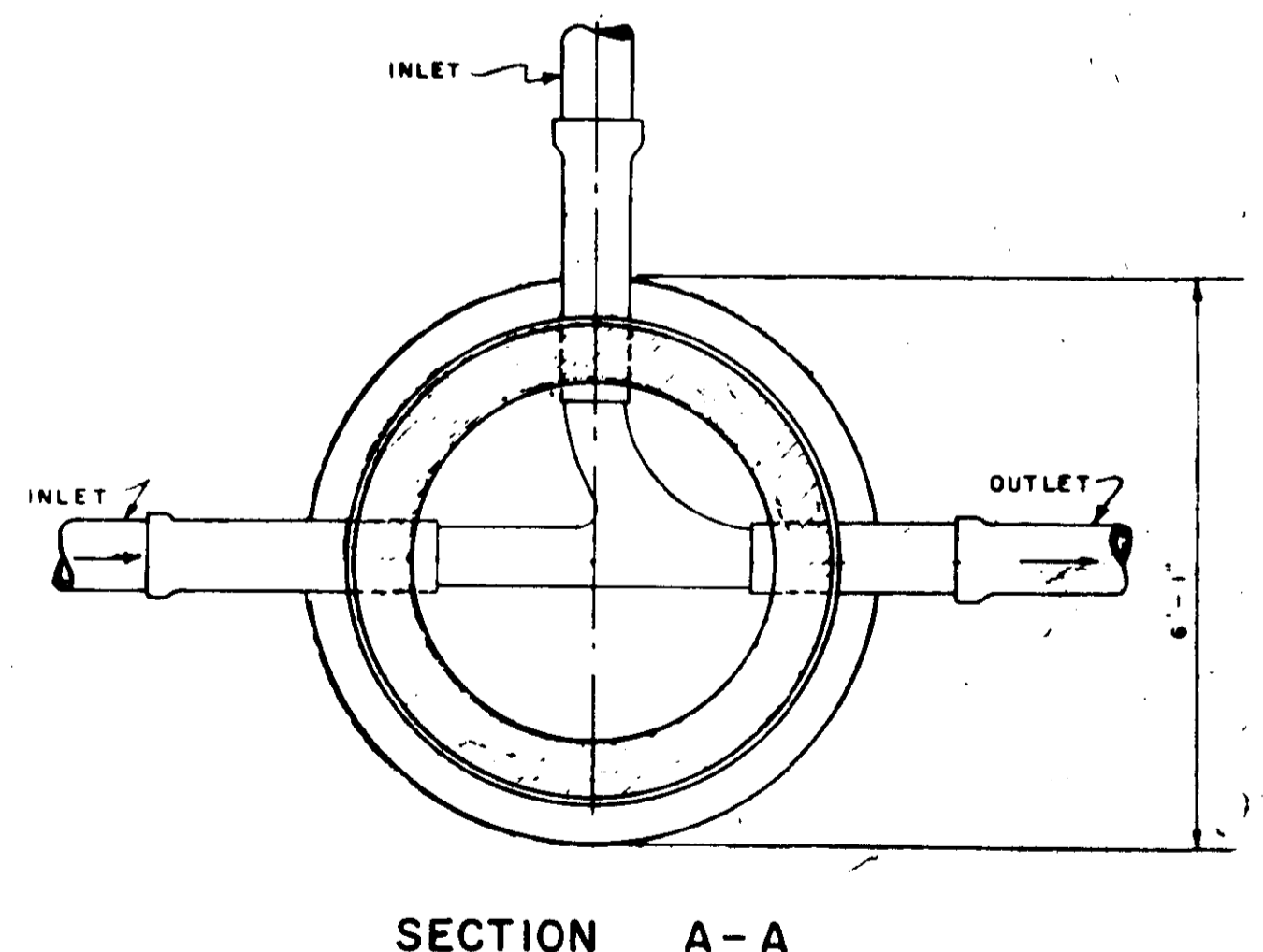
- NOTE
- 23 1/4" M.H. FRAME AND COVER SHALL WEIGH NOT LESS THAN 360 LBS.
 - 32" M.H. FRAME AND COVER SHALL WEIGH NOT LESS THAN 750 LBS.
 - MATERIAL: CAST IRON A.S.T.M. A-48, CLASS #20



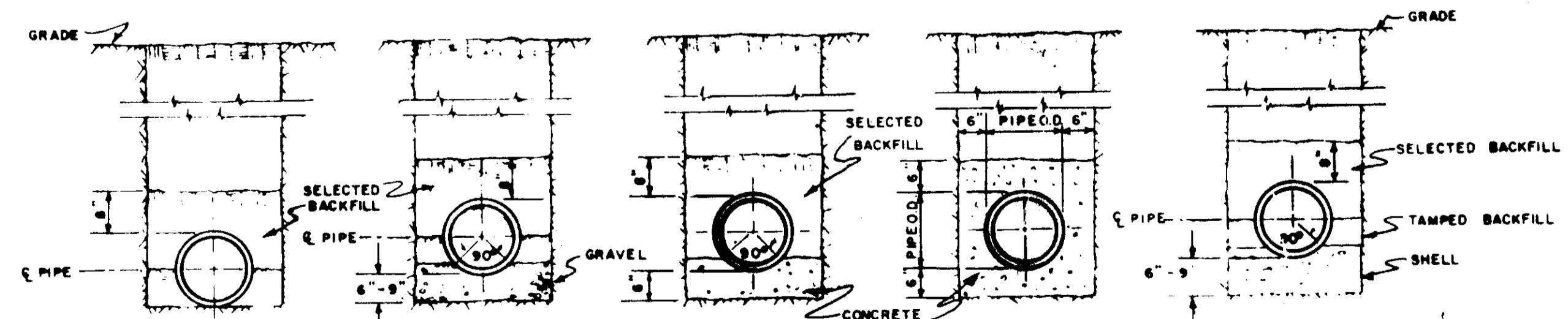
MANHOLE - SECTION



SHALLOW MANHOLE - SECTION



SECTION A-A



TYPICAL TRENCH

GRAVEL SUBGRADE

CONCRETE CRADLE

CONCRETE ENCASEMENT

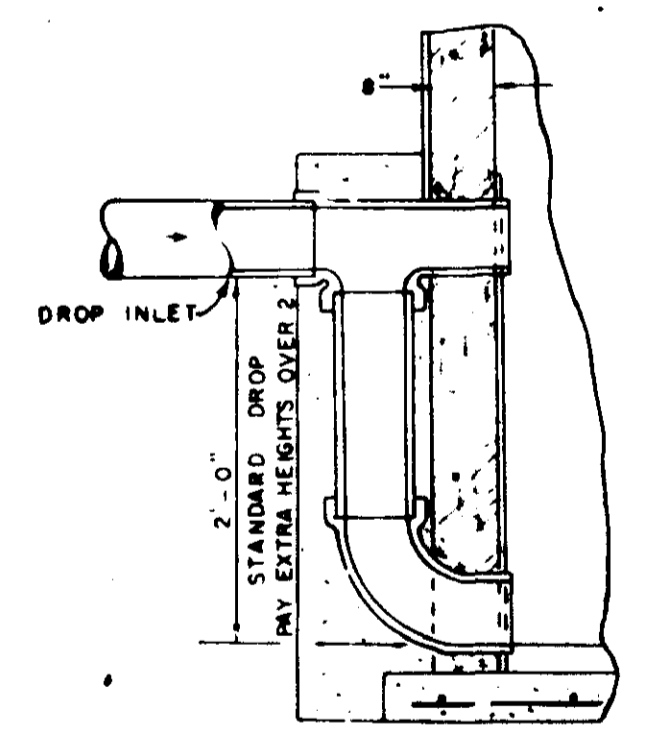
SHELL SUBGRADE

QUANTITY	CY/FT.
6"	0.040
8"	0.048
10"	0.074
12"	0.082
14"	0.108
16"	0.124
18"	0.150
21"	0.166
24"	0.182

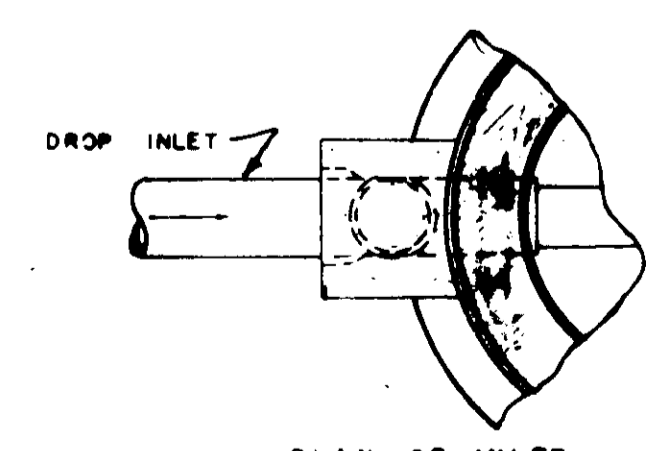
QUANTITY	CY/FT.
6"	0.030
8"	0.034
10"	0.038
12"	0.041
14"	0.055
16"	0.062
18"	0.071
21"	0.077
24"	0.090

QUANTITY	CY/FT.
6"	0.079
8"	0.086
10"	0.112
12"	0.131
14"	0.158
16"	0.188
18"	0.212
21"	0.229
24"	0.258

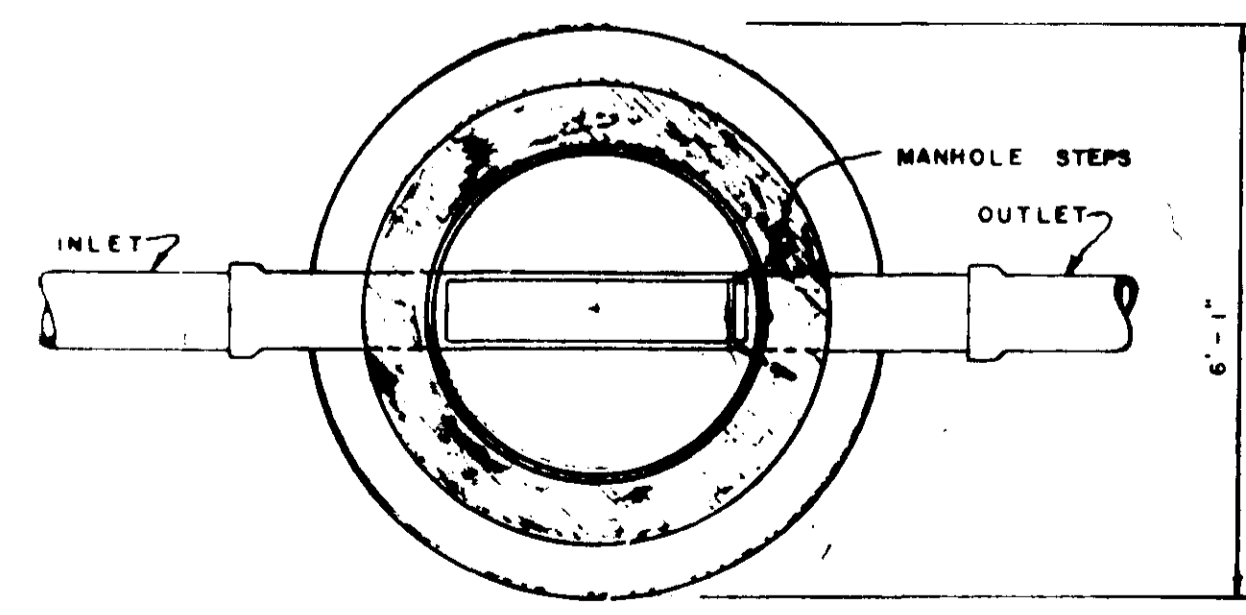
QUANTITY	CY/FT.
6"	0.060
8"	0.068
10"	0.076
12"	0.082
14"	0.108
16"	0.124
18"	0.150
21"	0.166
24"	0.182



SECTION OF INLET
MANHOLE DROP



PLAN OF INLET
MANHOLE DROP



SECTION B-B

Standard Detail

CASE and ASSOCIATES, INC.
Jackson, Mississippi

SCALE: 1" = 100' DATE: 12/2/54 SHEET NO. 10