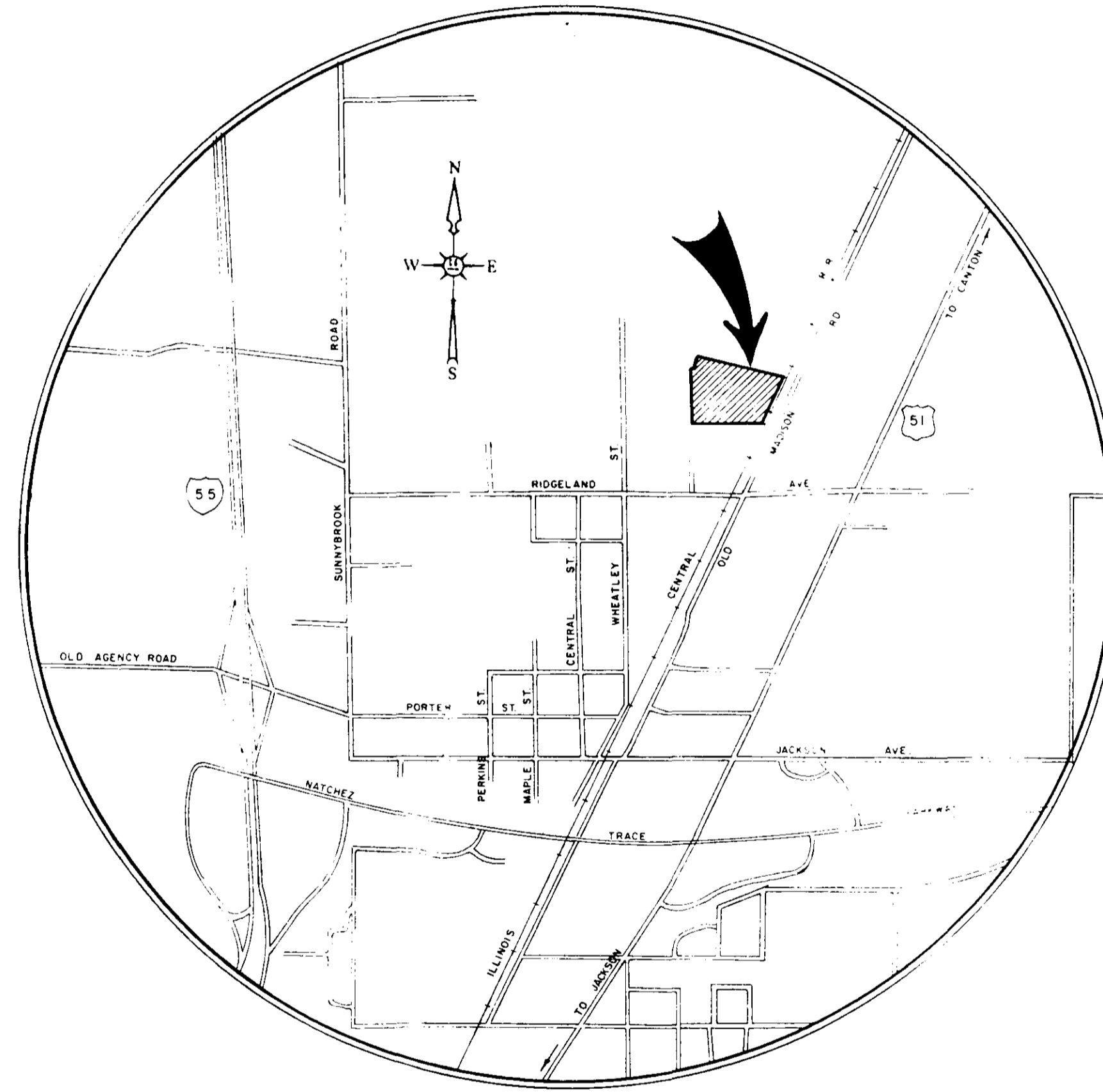
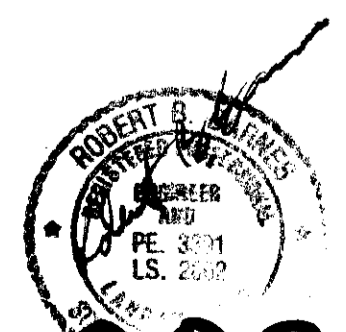


BROOKWOODS SUBDIVISION

Situated in Lot 1, Block 12 and Lot 5, Block 9, Highland Colony Subdivision
Ridgeland, Madison County, Mississippi

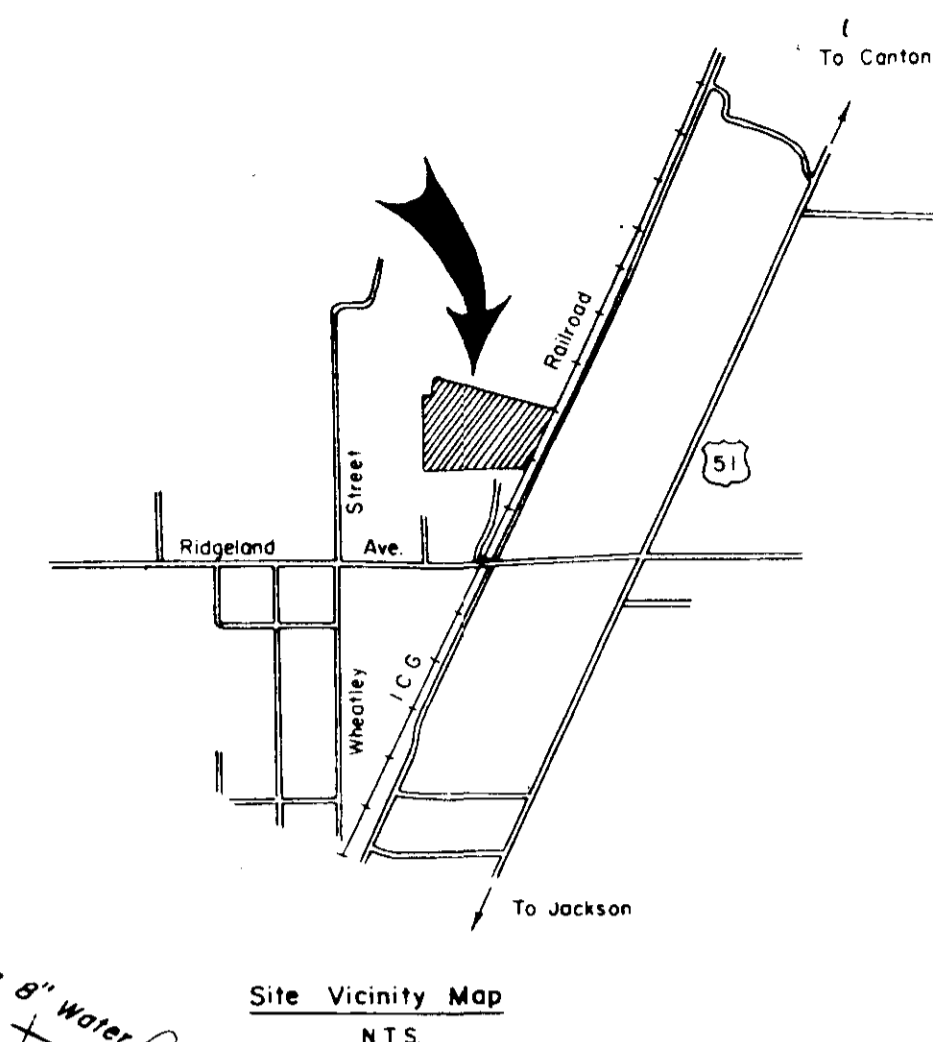
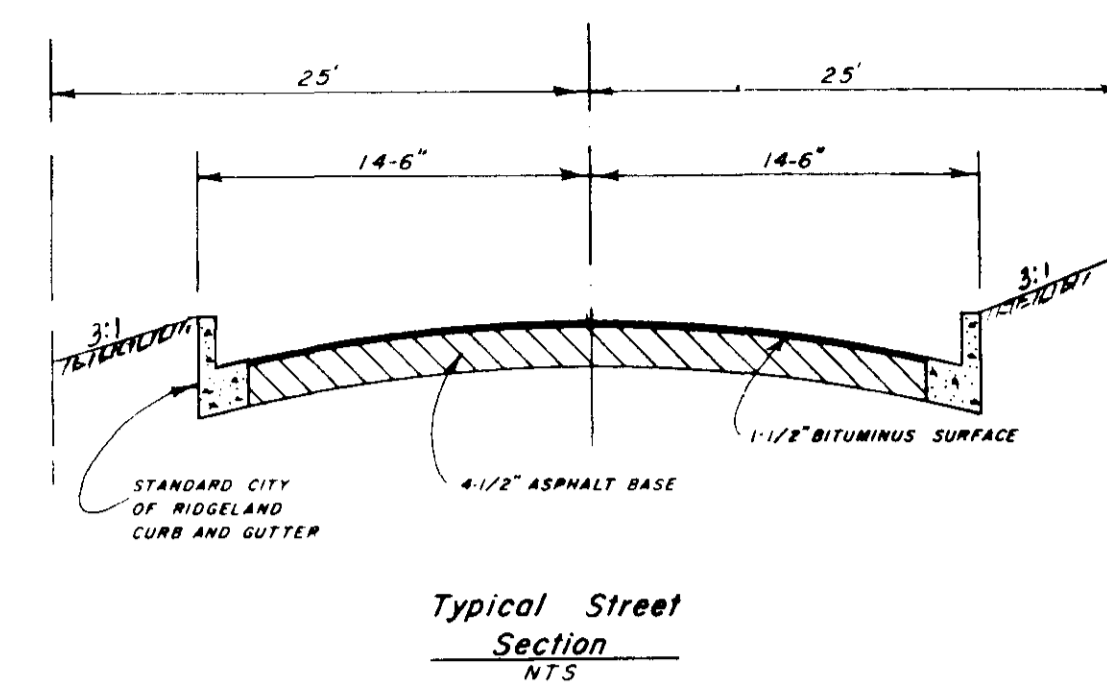
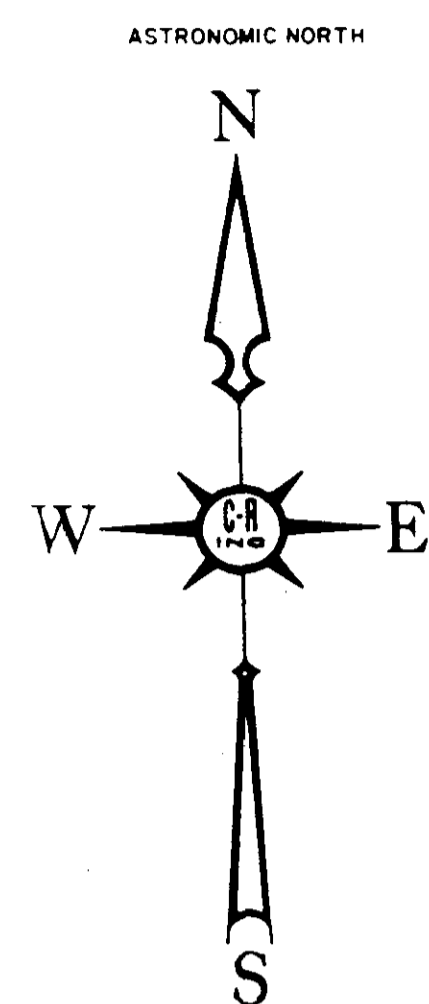


CASE & ASSOCIATES, INC.
JACKSON, MISS.
FEBRUARY, 1989

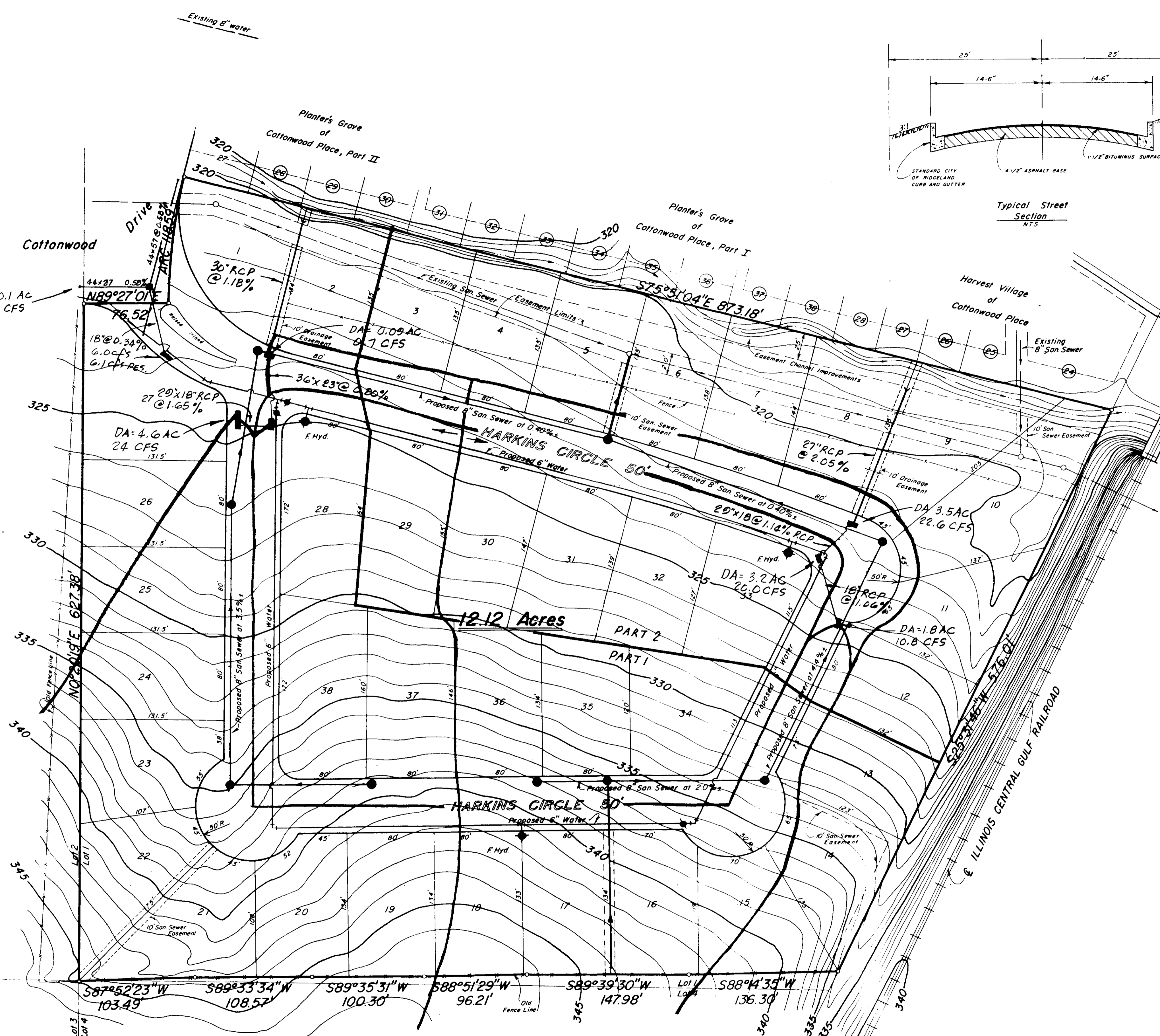
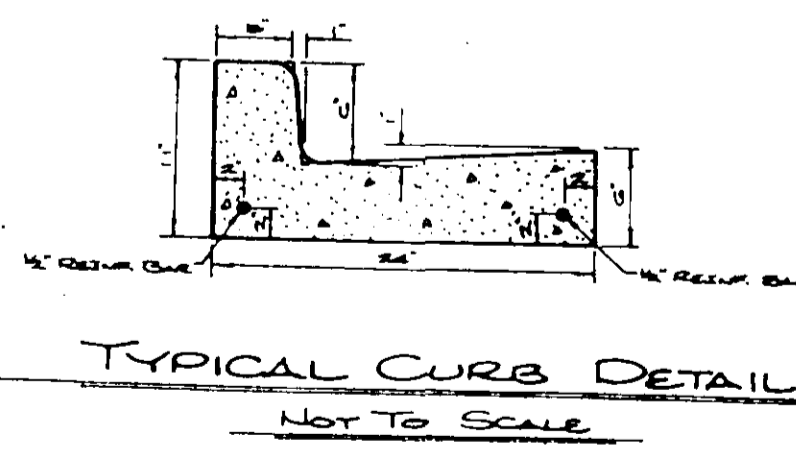


PART 1 - "AS BUILT" BY C&A.
10-25-89
PART 2 - "AS BUILT"
BY ROBERT B. BARNES
11-2-93

PWP-00214



- GENERAL NOTES
1. CONTRACTOR SHALL PROVIDE ANCHORING COUPLING TO WATER MAIN IN ADDITION TO STANDARD CONCRETE THRUST BLOCKS AT EACH FIRE HYDRANT.
 2. UTILITY CONTRACTOR (SEWER AND WATER) WILL BE RESPONSIBLE FOR ADJUSTING ALL MANHOLE TOPS TO FINISHED GRADE.
 3. UTILITY CONTRACTOR IS RESPONSIBLE FOR COMPACTION TO REQUIRED DENSITY OF ALL TRENCHES CROSSING ROADWAYS OR NEAR CURB LINES.
 4. ALL STORM WATER STRUCTURES HAVE BEEN DESIGNED TO CARRY THE PEAK RUNOFF EXPECTED FOLLOWING A RAINFALL OF AN INTENSITY AND DURATION RECURRING ONLY ONCE IN 25 YEARS WITH AN URBANIZATION FACTOR OF 50%.
 5. ALL SANITARY SEWER PIPE MAY BE A.B.S. "TRUSS" PIPE CONFORMING TO ASTM D-2680, INSTALLED IN STRICT CONFORMANCE WITH MANUFACTURER'S INSTALLATION REQUIREMENTS.
 6. ALL SANITARY SEWER MANHOLES WILL BE WATERPROOFED.
 7. MINIMUM BEDDING FOR ALL SANITARY SEWER PIPING SHALL BE METHOD "A" OF CLASS "C" BEDDING. (SHAPED SUBGRADE)
 8. ALL WATER PIPE SHALL BE CLASS 150. PVC, AWWA C-900.
 9. ALL CONSTRUCTION SHALL BE DONE IN STRICT CONFORMANCE WITH THE CITY OF RIDGELAND'S STANDARD SPECIFICATIONS.

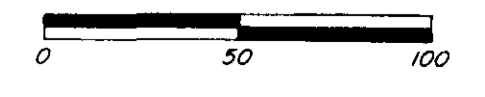


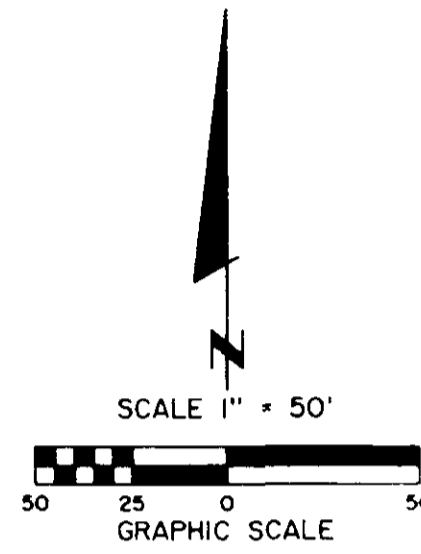
- General Notes:
1. Ansley H. Harkins, Developer
5760 I-55 North
Jackson, Mississippi 39211
 2. All Elevations Shown Are In Reference To NGVD
 3. Ratio Of Mathematical Closure Is 1:68,970
 4. All Partial Cul-De-Sacs Will Have A ROW Radius Of 50' And A Radius To Back Of Curb Of 41.5'
 5. According To F.I.R.M. Community Panel No 2802260225 B This Property In Zone "C"
 6. Present Zoning R-2 and R-4
Proposed Use R-2
 7. Building Setbacks
Front 25 Min.
Side 15 Between Buildings
Rear 25 Min.
 8. Variances Have Been Requested For Lots 9 and 10
 9. Total Number of Proposed Lots is 38.
 10. A MINIMUM VERTICAL CLEARANCE OF 18' IS REQUIRED AT ALL WATER AND SAN SEWER CROSSINGS OR DUCTILE IRON SEWER PIPE SHALL BE INSTALLED.

NOTE:
NO WATER PIPE INSTALLATION WILL BE ACCEPTED IF THE LEAKAGE IS GREATER THAN THAT DETERMINED BY THE FOLLOWING FORMULA:
 $L = (SD)^2 P$, WHERE L=ALLOWABLE LEAKAGE IN GAL/HR., S= LENGTH OF PIPE TESTED IN FEET, D= NOMINAL DIA. OF PIPE IN INCHES, P= AVERAGE PRESSURE DURING TEST, PSI GAUGE. IN NO CASE SHALL THE LENGTH OF THE TEST BE LESS THAN FOUR (4) HOURS AFTER THE LINE HAS BEEN BROUGHT TO FULL TEST PRESSURE.

BROOKWOODS
Situated in Lot 1, Block 12 and Lot 5, Block 9, Highland Colony,
Ridgeland, Madison County, Mississippi

CASE & ASSOCIATES, INC.
Registered Land Surveyors
Jackson, Miss. Scale: 1" = 50' January 30, 1989





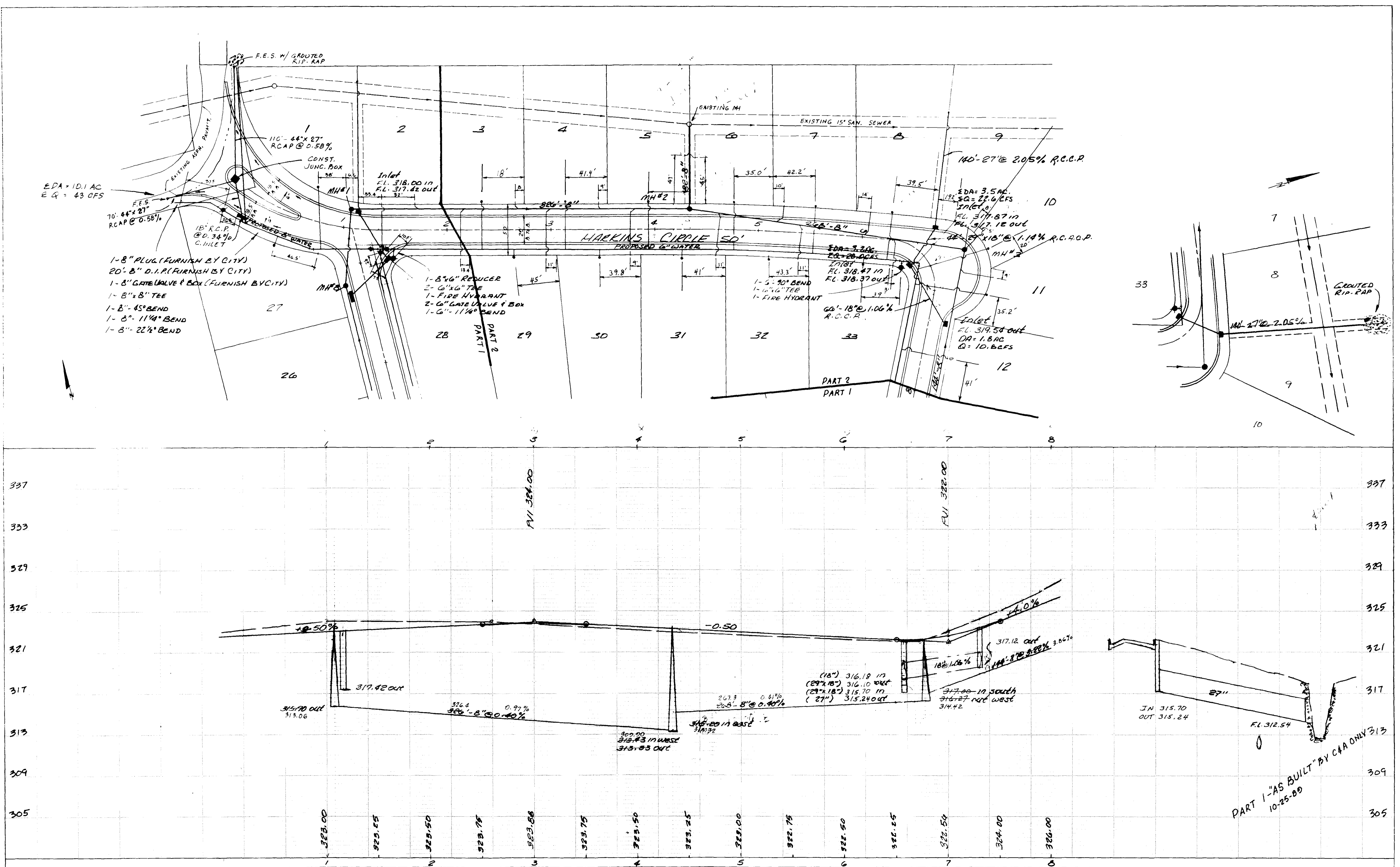
L-1	=	11,502 S.F.	0.264 AC
L-2	=	10,771 S.F.	0.247 AC
L-3	=	10,800 S.F.	0.248 AC
L-4	=	10,800 S.F.	0.248 AC
L-5	=	10,800 S.F.	0.248 AC
L-6	=	10,871 S.F.	0.250 AC
L-7	=	11,166 S.F.	0.256 AC
L-8	=	12,564 S.F.	0.288 AC
L-9	=	14,231 S.F.	0.327 AC
L-10	=	15,489 S.F.	0.356 AC
L-11	=	10,652 S.F.	0.245 AC
L-12	=	10,540 S.F.	0.242 AC
L-13	=	10,521 S.F.	0.242 AC
L-14	=	10,856 S.F.	0.249 AC
L-15	=	10,902 S.F.	0.250 AC
L-16	=	10,760 S.F.	0.247 AC
L-17	=	10,762 S.F.	0.247 AC
L-18	=	10,720 S.F.	0.246 AC
L-19	=	10,492 S.F.	0.245 AC
L-20	=	10,500 S.F.	0.241 AC
L-21	=	11,540 S.F.	0.265 AC
L-22	=	10,924 S.F.	0.251 AC
L-23	=	10,692 S.F.	0.245 AC
L-24	=	10,520 S.F.	0.242 AC
L-25	=	10,520 S.F.	0.242 AC
L-26	=	10,520 S.F.	0.242 AC
L-27	=	13,520 S.F.	0.310 AC
L-28	=	12,306 S.F.	0.283 AC
L-29	=	12,034 S.F.	0.276 AC
L-30	=	11,030 S.F.	0.253 AC
L-31	=	11,595 S.F.	0.266 AC
L-32	=	10,590 S.F.	0.243 AC
L-33	=	10,500 S.F.	0.241 AC
L-34	=	10,500 S.F.	0.241 AC
L-35	=	10,500 S.F.	0.241 AC
L-36	=	11,187 S.F.	0.257 AC
L-37	=	12,283 S.F.	0.282 AC
L-38	=	13,257 S.F.	0.304 AC
ST	=	429,936 S.F.	9.870 AC
STREET	=	98,193 S.F.	2.254 AC
ST	=	98,193 S.F.	2.254 AC
TO	=	528,129 S.F.	12.124 AC
SUBD 'N	=	528,129 S.F.	12.124 AC

GEOMETRIC LAYOUT

BROOKWOODS SUBDIVISION

PLAN
 SHEET NO. 4
 DATE: 10-25-89

PROFILE
 SHEET NO. 4
 DATE: 10-25-89



- 1- 8" PLUG (FURNISH BY CITY)
- 20' 8" D.I.P. (FURNISH BY CITY)
- 1- 8" GATE VALVE & BOX (FURNISH BY CITY)
- 1- 8" x 8" TEE
- 1- 8" 45° BEND
- 1- 8" 11 1/4° BEND
- 1- 8" 22 1/2° BEND

- 1- 8" 6" REDUCER
- 2- 6" x 6" TEE
- 1- FIRE HYDRANT
- 2- 6" GATE VALVE & BOX
- 1- 6" 11 1/4° BEND

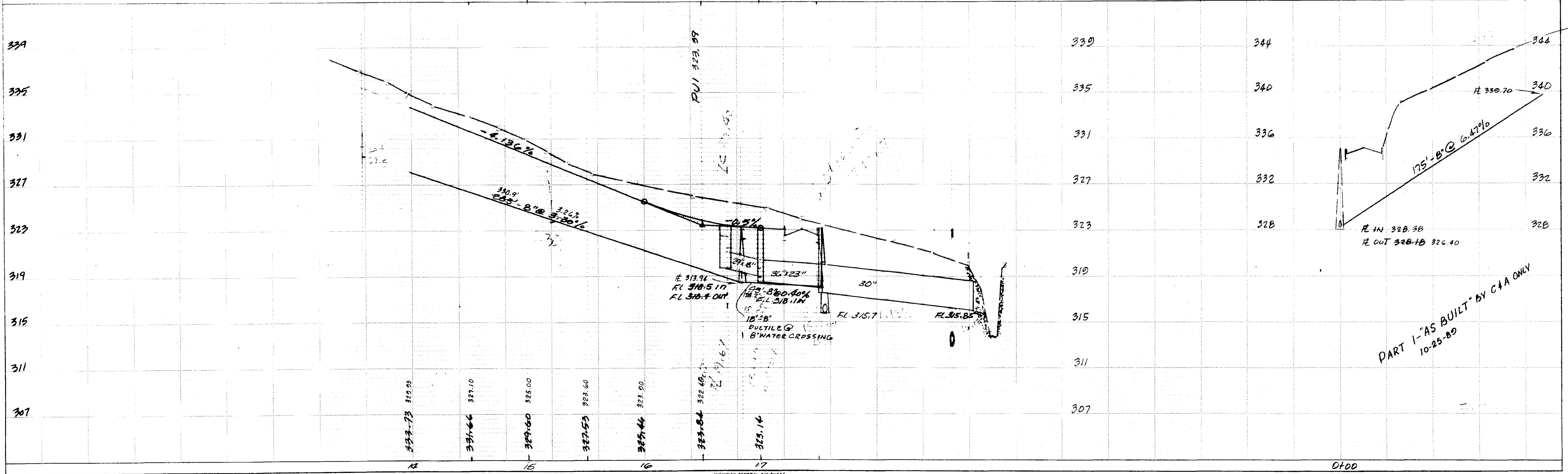
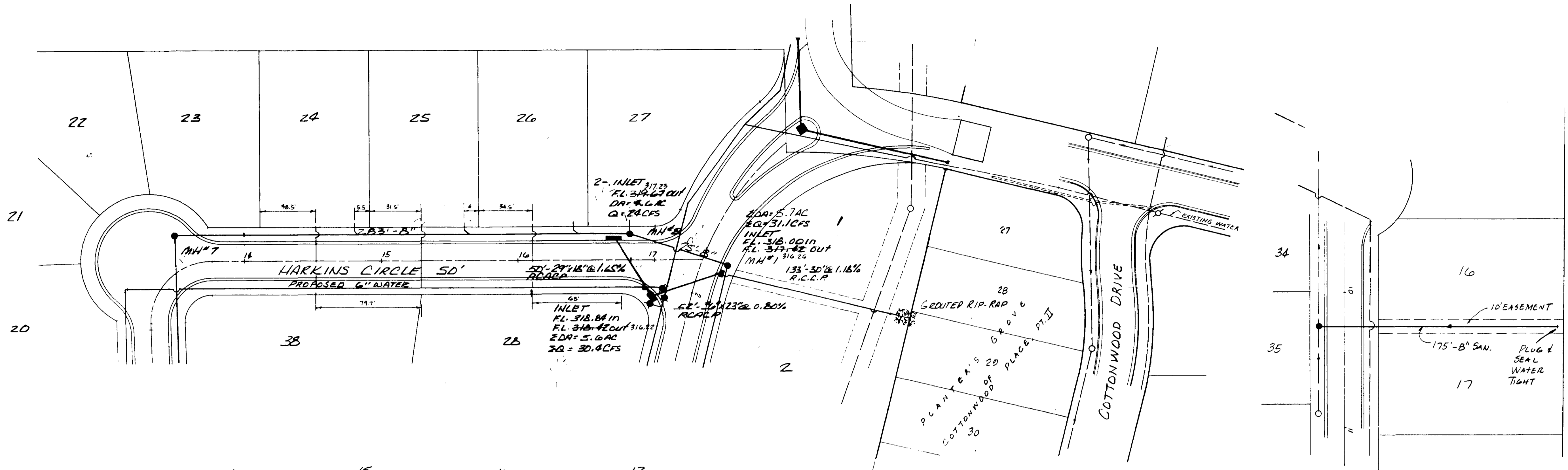
- 1- 5" 90° BEND
- 1- 1 1/2" 6" TEE
- 1- FIRE HYDRANT

PLATE 1-SINGLE PLAN AND PROFILE-FULL DOT
 TELETYPE
 PRINTED IN U.S.A.

BROOKWOODS SUB. SHEET 4

PLAN
 DATE: 10-25-89
 BY: [Signature]
 CHECKED: [Signature]
 TITLE: [Title]

PROFILE
 DATE: 10-25-89
 BY: [Signature]
 CHECKED: [Signature]
 TITLE: [Title]



HIGHWAY FEDERAL AID SHEET
 PLATE 1-SINGLE PLAN AND PROFILE-FULL DCT
 WELDING
 PRINTED IN U.S.A.

OFDD
 BROOKWOODS SUB. SHEET 6