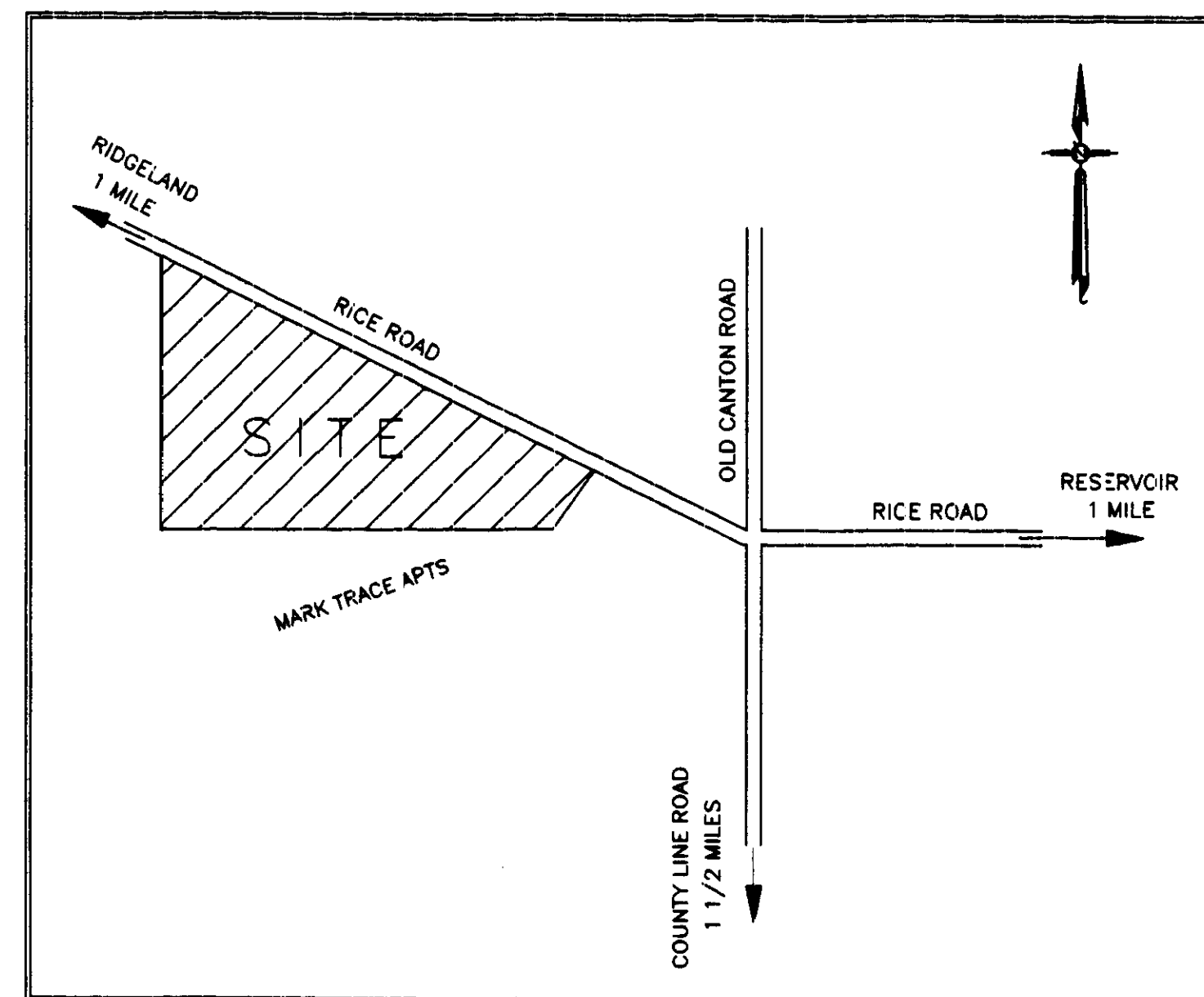


Construction Plans
CAMDENPARK
 SECTION 29, T7N - R2E
 CITY OF RIDGELAND, MADISON COUNTY, MISSISSIPPI



VICINITY MAP

Index of Drawings

Sht. No.	Description
1	COVER SHEET
2	PRELIMINARY PLAT
3	PLAN - PROFILE : CAMDENPARK DRIVE
4	PLAN - PROFILE : CAMDENPARK PLACE
5	PLAN - PROFILE : SEWER OUTFALL
6	DRAINAGE AND EROSION CONTROL PLAN
7	STANDARD WATER DETAILS
8	STANDARD SEWER DETAILS

THIS DRAWING CORRECTED
AS BUILT
 DATE 5-14-97 PHASE 1
 SIGNED R.P.L.

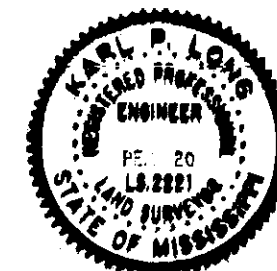
THIS DRAWING CORRECTED
AS BUILT
 DATE 12-2-97 PHASE 2
 SIGNED R.P.L.

DEVELOPED BY: SARTAIN ASSOCIATES, INC.

P.O. BOX 673
 RIDGELAND, MISSISSIPPI 39158

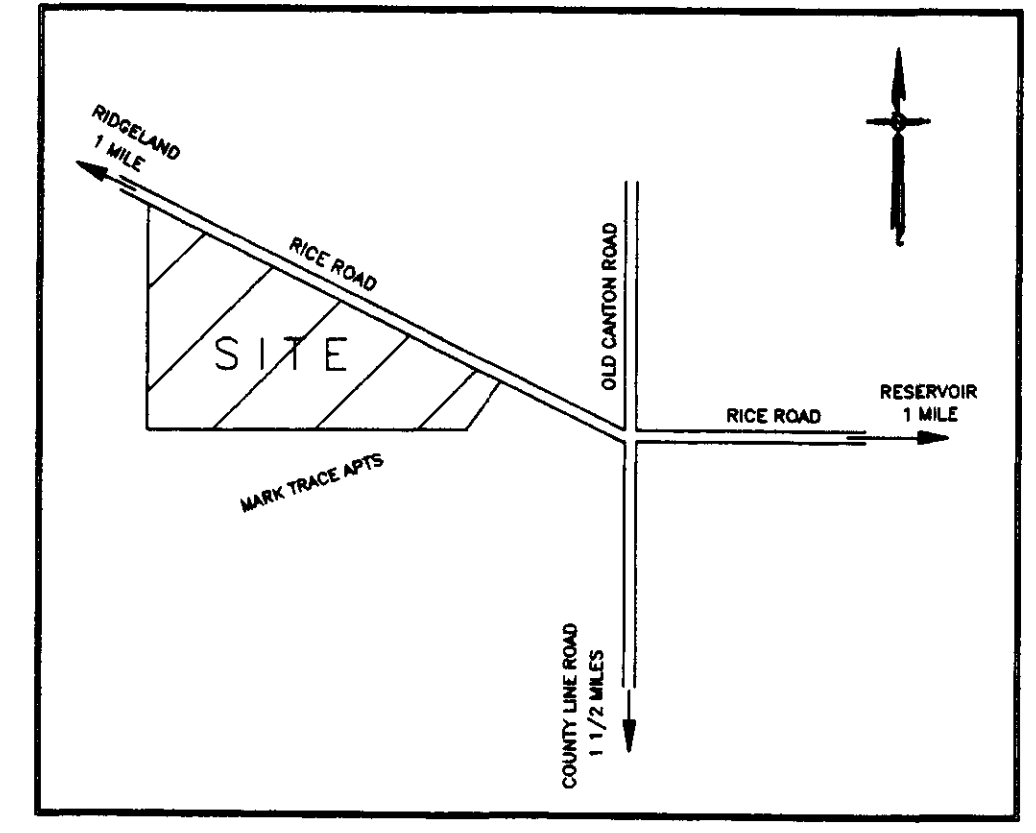
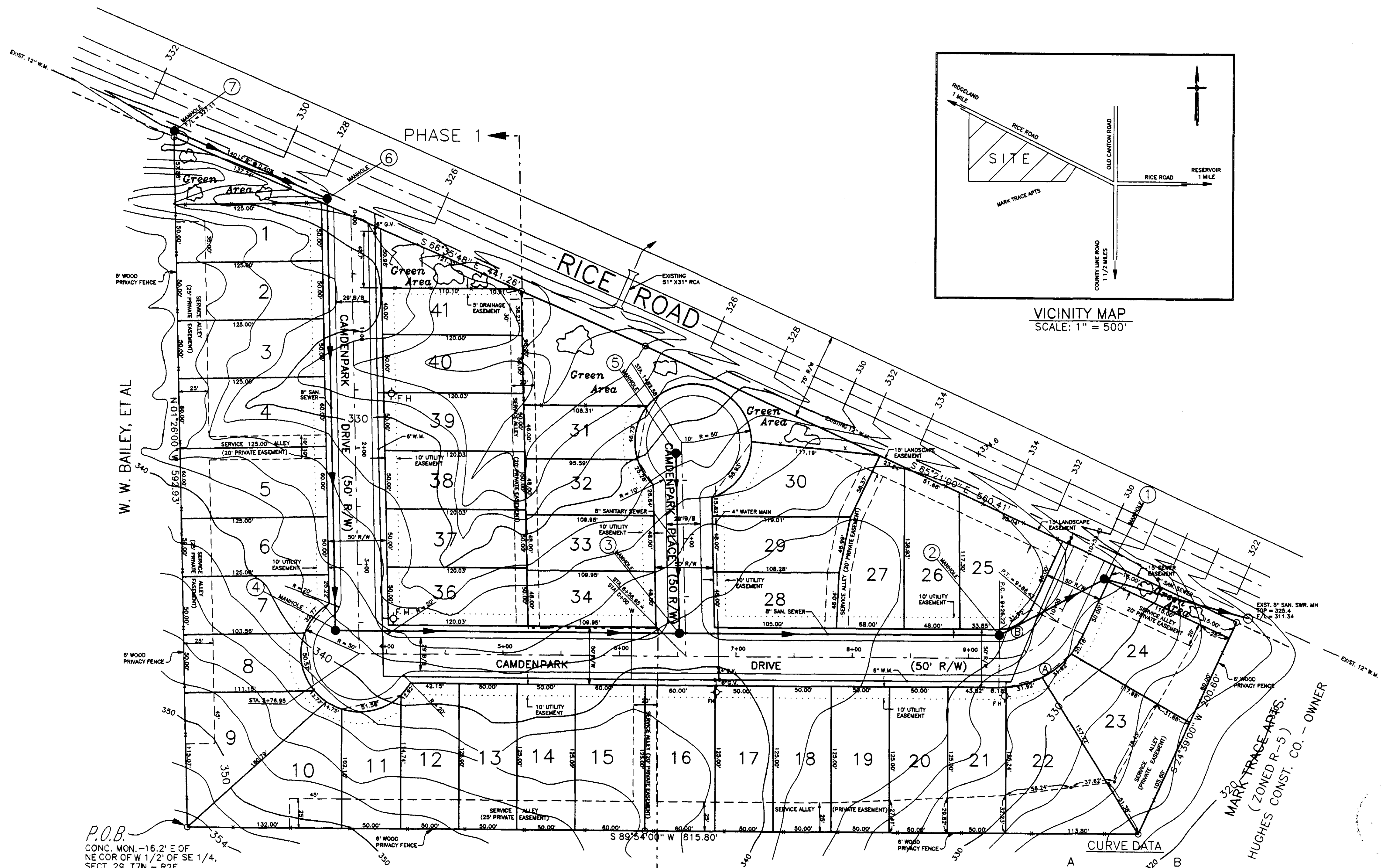
DESIGNED BY: CENTRAL MISSISSIPPI ENGINEERING, INC.

115 E. MAIN STREET
 FLOWOOD, MISSISSIPPI 39073

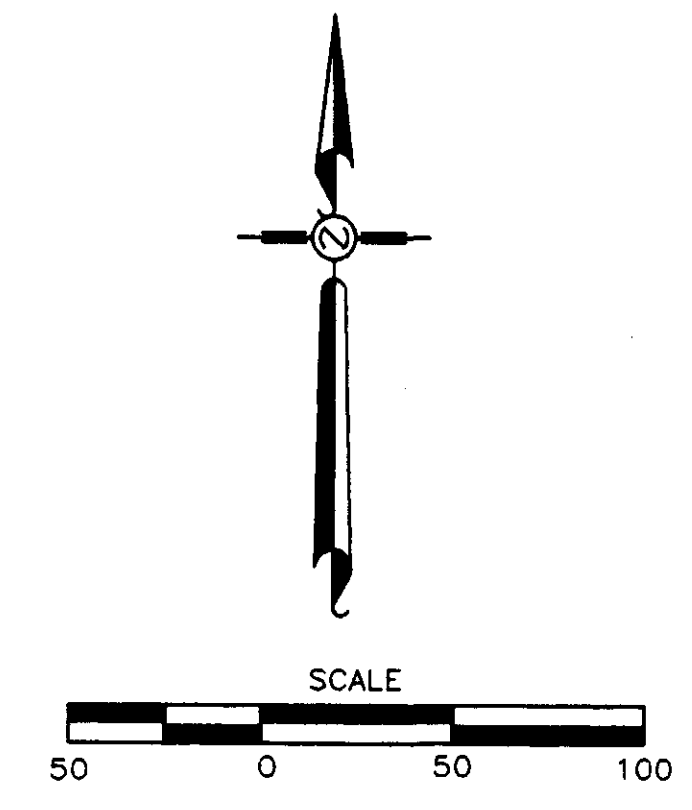


JULY, 1996

PWP-00329



VICINITY MAP
SCALE: 1" = 500'



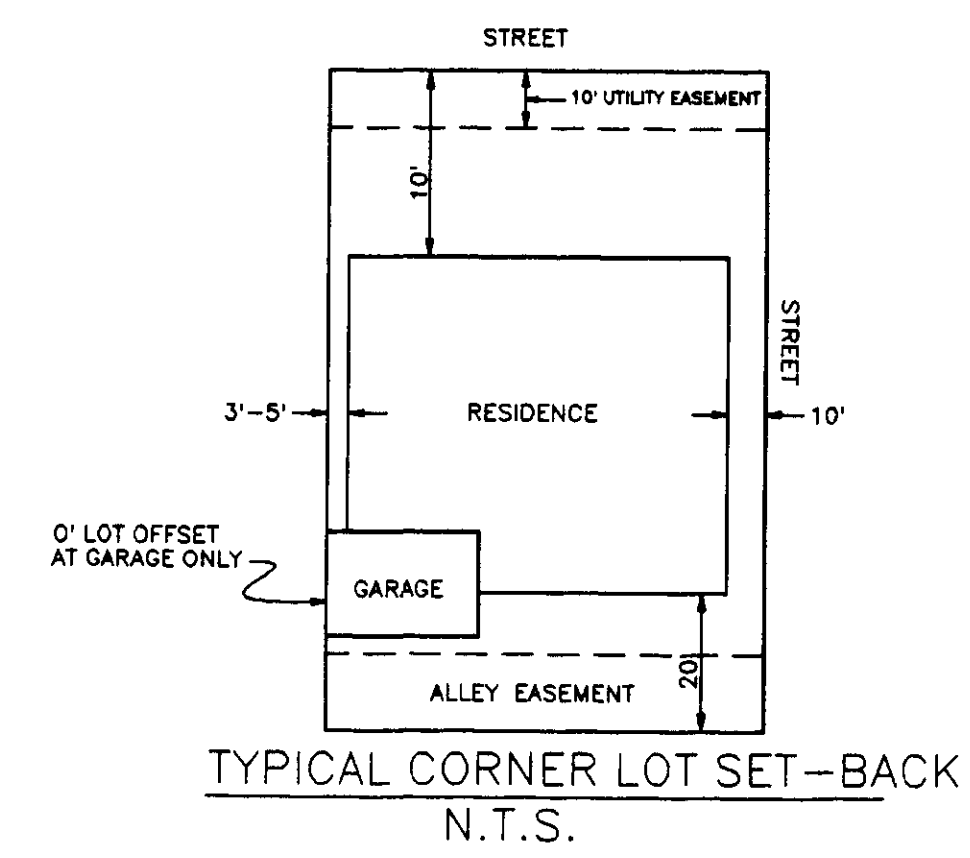
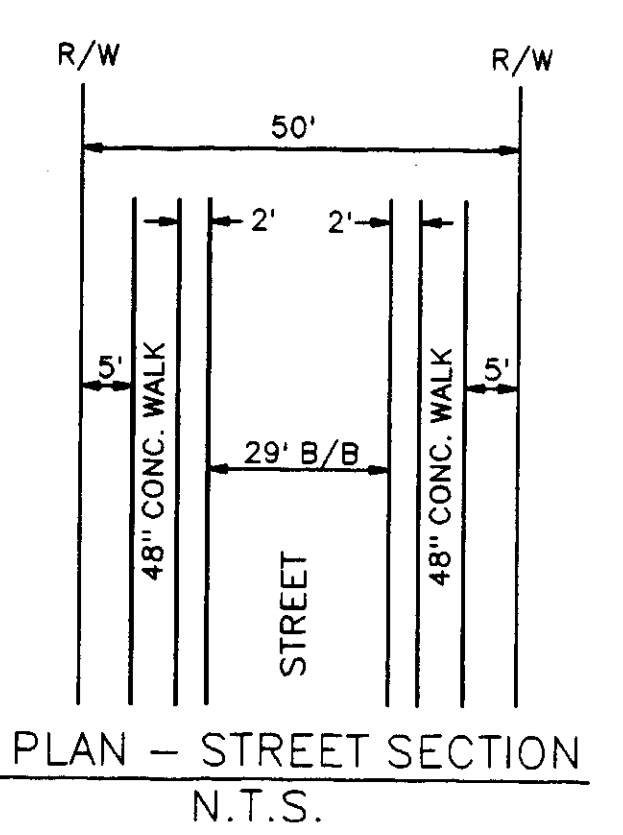
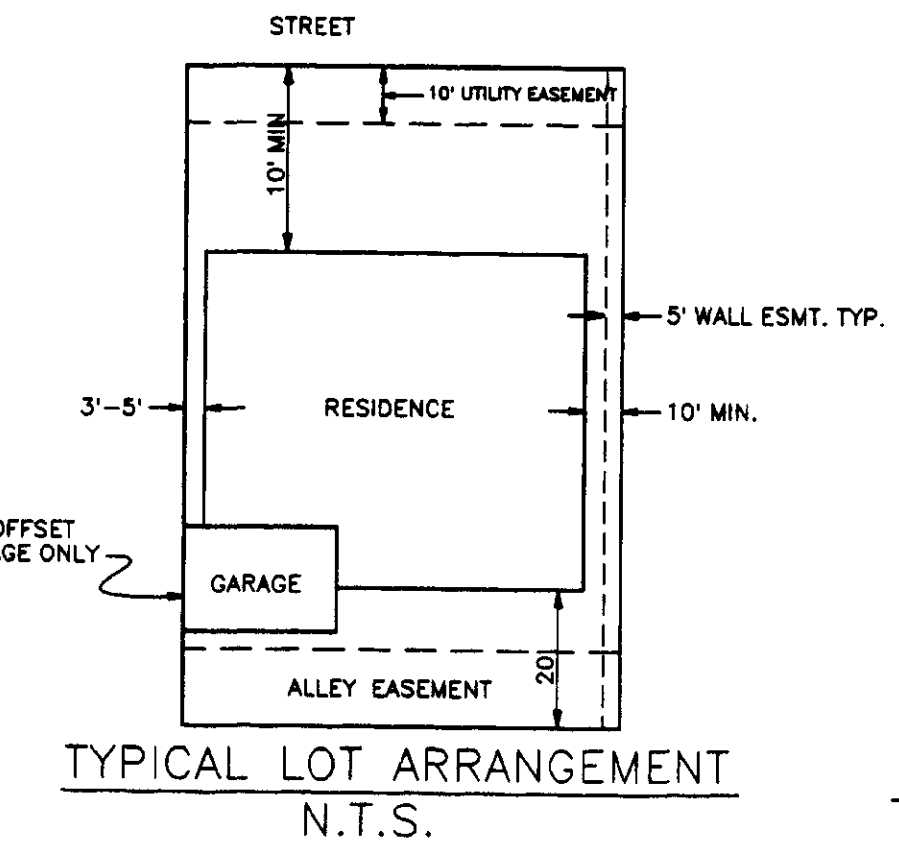
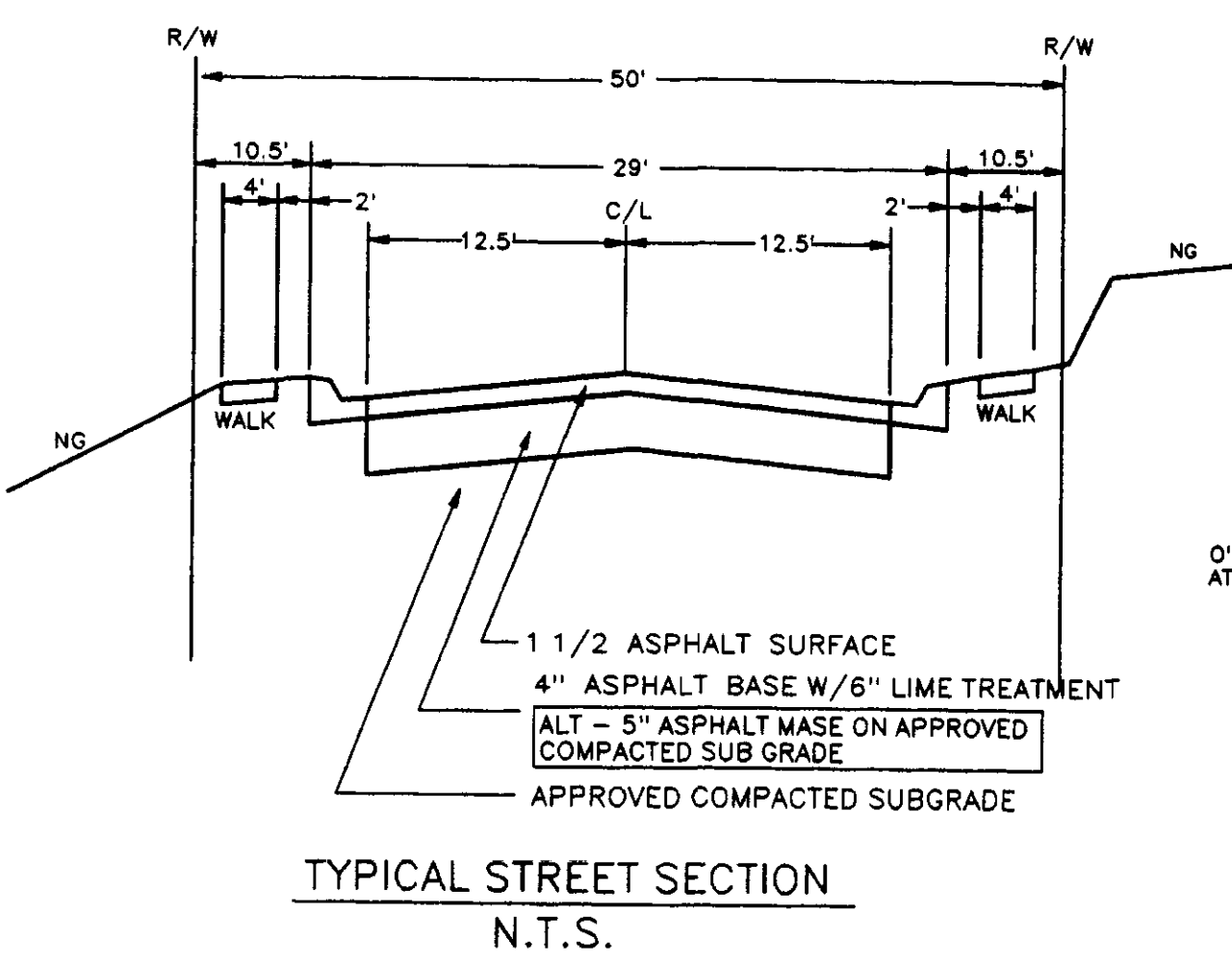
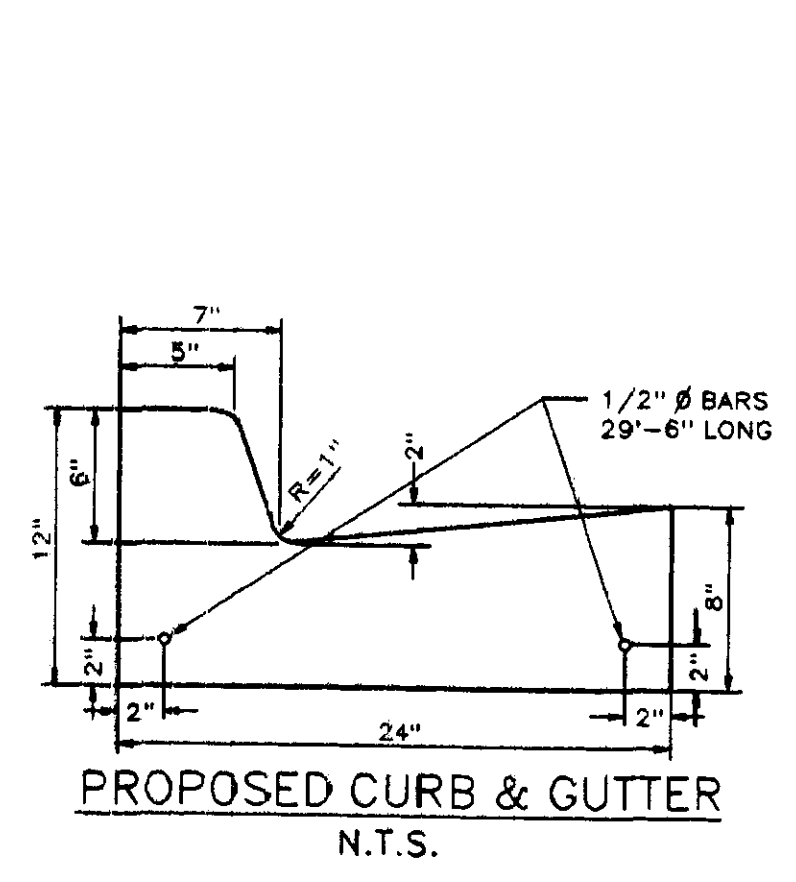
1. THIS PROPERTY IS SITUATED IN ZONE "X" ACCORDING TO F.I.R.M. MAP NO. 2809C0320 D. DATED: APRIL 15, 1994.
2. THIS PLAT IS PREPARED FROM A CLASS "B" SURVEY BY CENTRAL MISSISSIPPI ENGINEERING, INC., APRIL 19, 1996. BEARING REFERENCE IS NORTHERLY LINE OF MARK TRACE APARTMENTS.
3. ACREAGE FOR THIS PROJECT IS 7.92 ACRES.
4. PRESENT ZONING IS R3-A.
5. REQUIRED SETBACKS:
FRONT = 10' MINIMUM
SIDE = 0' - 10'
REAR = 20'
6. SINGLE FAMILY DETACHED PATIO HOMES.
FAMILY DETACHED PATIO HOMES.
7. GROSS LOT COVERAGE OF BUILDINGS - 40%
8. TOPOGRAPHIC SURVEY SUPPLIED BY DEVELOPER.
9. ALL EASEMENTS TO BE PERMANENTLY LOCATED AFTER COMPLETION OF CONSTRUCTION.

P.O.B.
CONC. MON. - 16.2' E OF
NE COR OF W 1/2 OF SE 1/4,
SECT. 29, T7N - R2E,
MADISON COUNTY, MS

CURVE DATA

A	B
$\Delta = 65^{\circ}15'00''$	$\Delta = 65^{\circ}15'00''$
T = 50.97'	T = 18.96'
R = 79.62'	R = 29.62'
L = 90.67'	L = 33.73'
D = 71^{\circ}57'42''	D = 193^{\circ}26'10''

PHASE 2
MARK TRACE APTS.
(ZONED R-5)
HUGHES CONST. CO. - OWNER



THIS DRAWING CORRECTED
AS BUILT
DATE *Apr 15 1997*
SIGNED *[Signature]*

DEVELOPER:
SARTAIN ASSOCIATES, INC.
P.O. BOX 673
RIDGELAND, MS 39158

PRELIMINARY PLAT
CAMDEN PARK
AS-BUILT

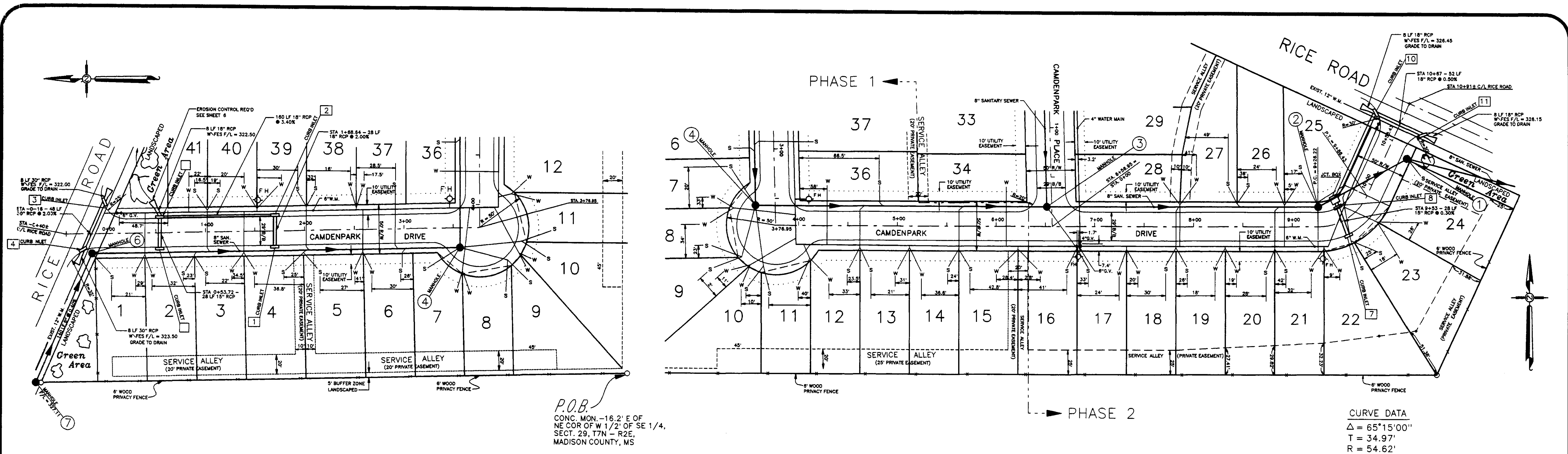
DATE	6/12/1996
CITY COMMENTS	8/12/1996
SAN SEWER	10/29/1996
AS-BUILT, PHASE 1	5/14/1997

Central Mississippi Engineering, Inc.
115 E. MAIN ST. - FLORENCE, MS 39073

CAMDEN PARK
RIDGELAND, MISSISSIPPI

DESIGNED	KPL
DRAWN	BITIS
APPROVED	KPL
DATE	MAY - 1996

Sheet No. **2**



P.O.B.
 CONC. MON. - 16.2' E OF
 THE COR. OF W 1/2 OF SE 1/4,
 SECT. 29, 17N - R2E,
 MADISON COUNTY, MS

PLAN & PROFILE - CAMDENPARK DRIVE

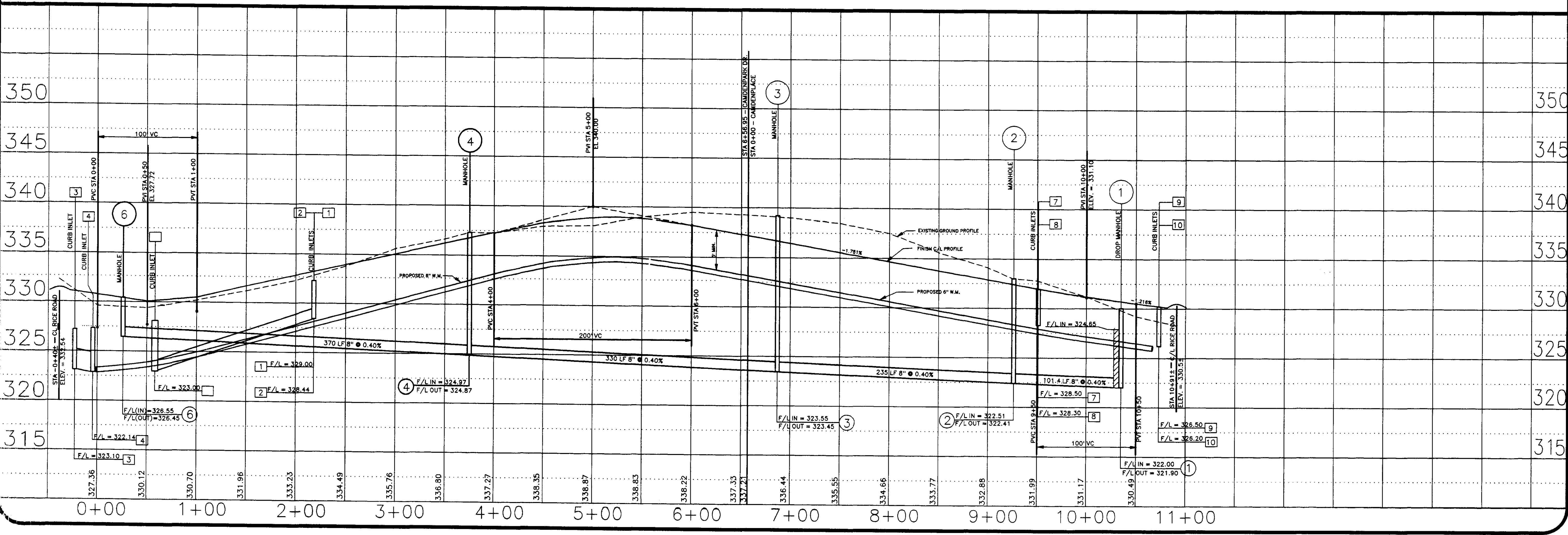
SCALE:
 PLAN: 1" = 50'
 PROFILE: 1" = 50' HORIZONTAL
 : 1" = 5' VERTICAL

CURVE DATA
 $\Delta = 65^{\circ}15'00''$
 $T = 34.97'$
 $R = 54.62'$
 $L = 62.21'$
 $D = 104^{\circ}53'56''$

THIS DRAWING CORRECTED
AS BUILT
 DATE *Rev. 10/29/99*
 SIGNED *[Signature]*

NOTE:
 ALL FIRE HYDRANT
 LEGS INCLUDE A 6"
 GATE VALVE AND BOX.

NOTE:
 AS-BUILTS DO NOT REFLECT
 CHANGES IN STREET ELEVATIONS.



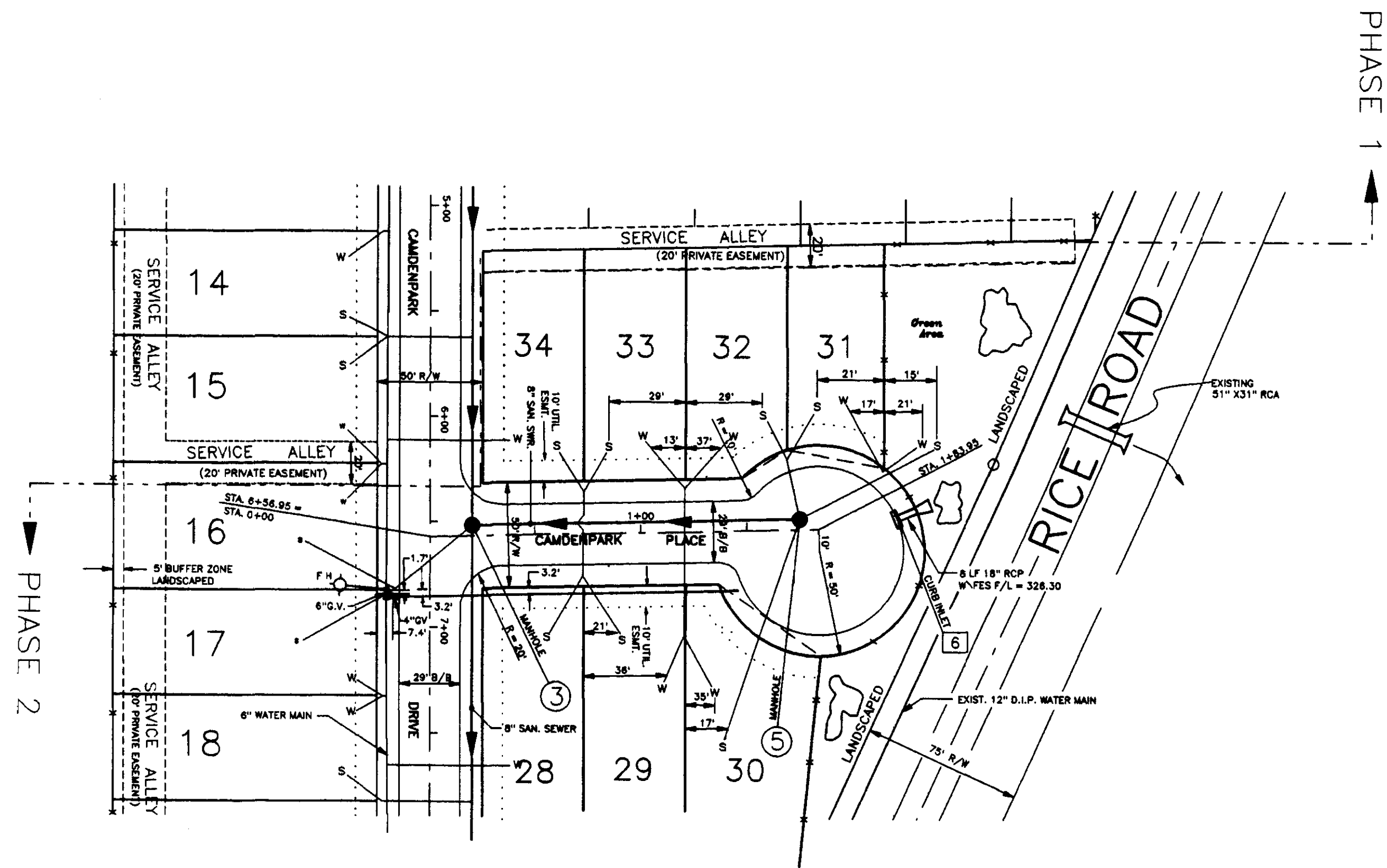
REVISIONS:
 8/12/96
 CITY COMMENTS
 SAN_SEWER
 AS-BUILT
 10/29/1996
 12-2-97

Central Mississippi Engineering, Inc.
 115 E. MAIN ST. - FLORENCE, MS 39073

CAMDENPARK
 RIDGELAND, MISSISSIPPI

Designed: KARL P. LONG
 Drawn: BTG - HUT
 Approved: KARL P. LONG
 Date: MAY 29, 1995

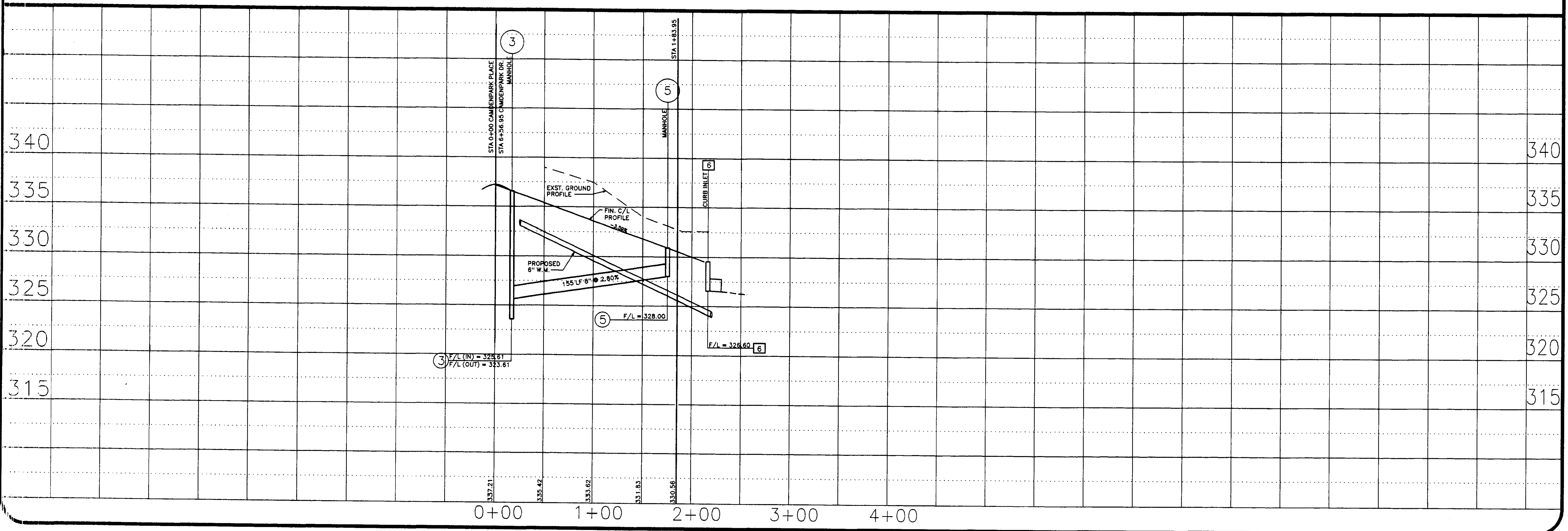
Sheet No.
3



PLAN & PROFILE - CAMDENPARK PLACE

SCALE:
 PLAN: 1" = 50'
 PROFILE: 1" = 50' HORIZONTAL
 : 1" = 5' VERTICAL

THIS DRAWING CORRECTED
AS BUILT
 DATE Phase II 12/29/97
 SIGNED [Signature]



Revisions

CITY COMMENTS	8/12/1996
SAN SEWER	10/29/1996
AS-BUILT	12-2-97

Central Mississippi Engineering, Inc.
 115 E. MAIN ST. - FLORENCE, MS 39073

CAMDENPARK
RIDGELAND, MISSISSIPPI

Designed: KARL P. LONG
 Drawn: BTG
 Approved: KARL P. LONG
 Date: MAY 29, 1996

Sheet No.
4