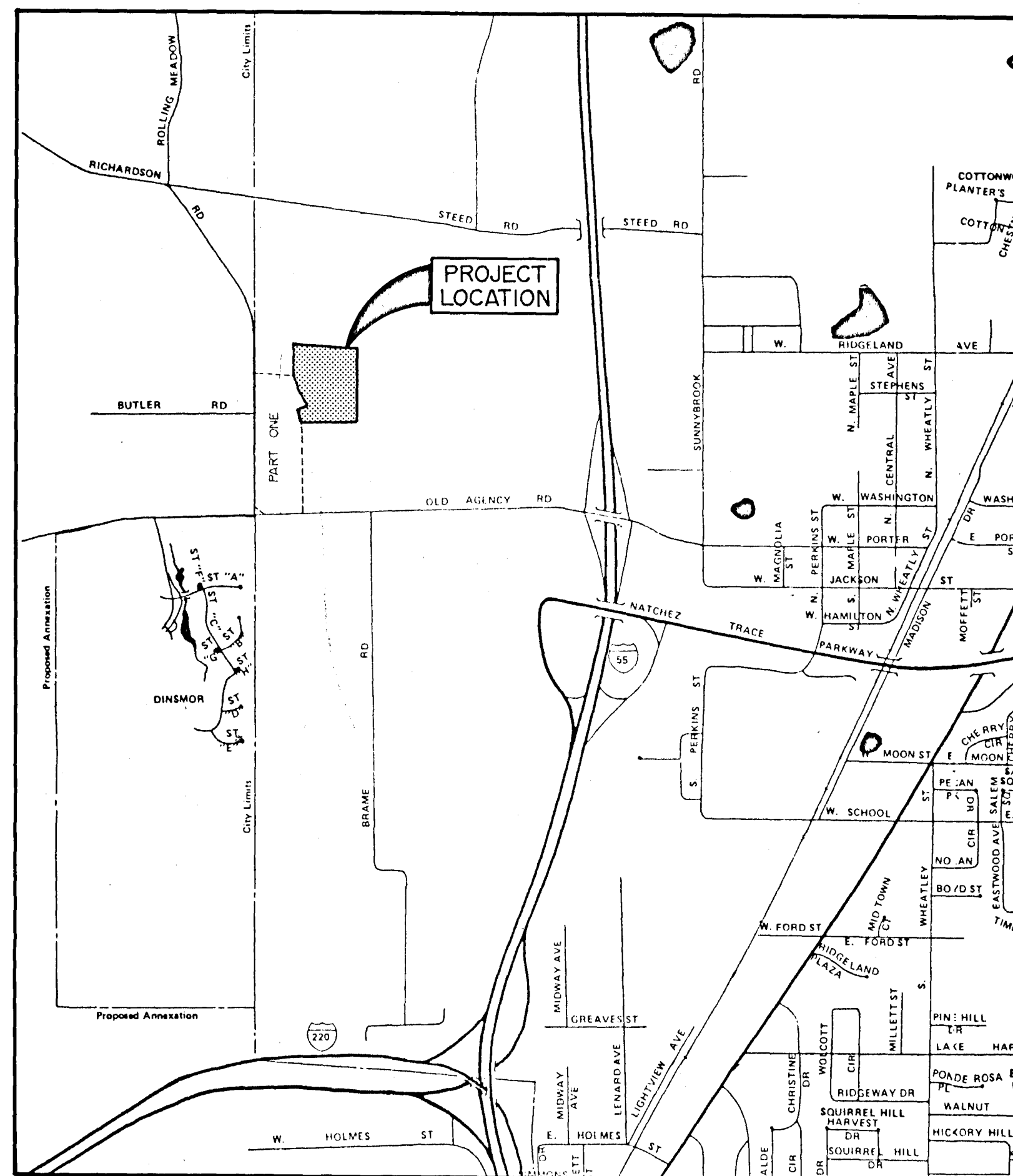


CONTRACT DRAWINGS FOR

CANTERBURY SUBDIVISION

PART TWO

STREETS, DRAINAGE, SANITARY SEWER & WATER SYSTEM



STREETS AND DRAINAGE

ITEM	QUANTITY	UNIT
4" Asphaltic Black Base	5845	S.Y.
1 1/2" Asphaltic Surface Course	5845	S.Y.
Concrete Curb and Gutter	3500	L.F.
Curb Inlets	1	Ea.
Drop Inlets	12	Ea.
Storm Manholes	4	Ea.
Sub-Base Preparation	5845	S.Y.
Storm Pipe		
15" RCP	115	L.F.
18" RCP	190	L.F.
36" RCP	510	L.F.
24" RCP	142	L.F.
27" RCP	463	L.F.
36" x 23" RCP	60	L.F.
58" x 36" RCP	339	L.F.
65" x 40" RCP	230	L.F.
24" Conc. F.E.S.	1	Ea.
Rock Riprap	320	Ton

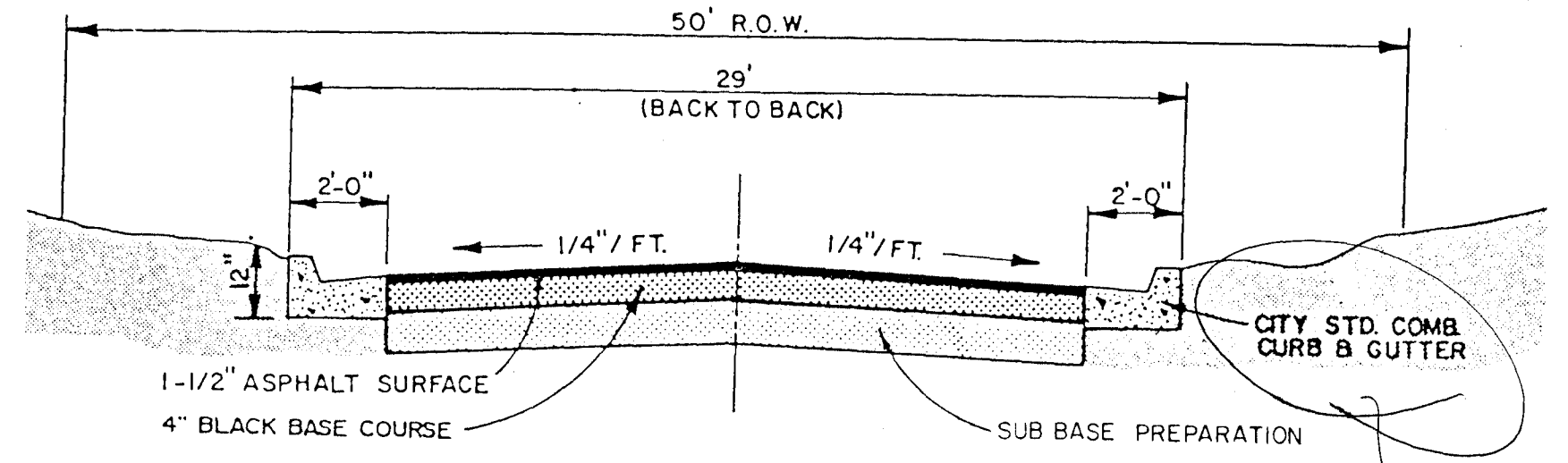
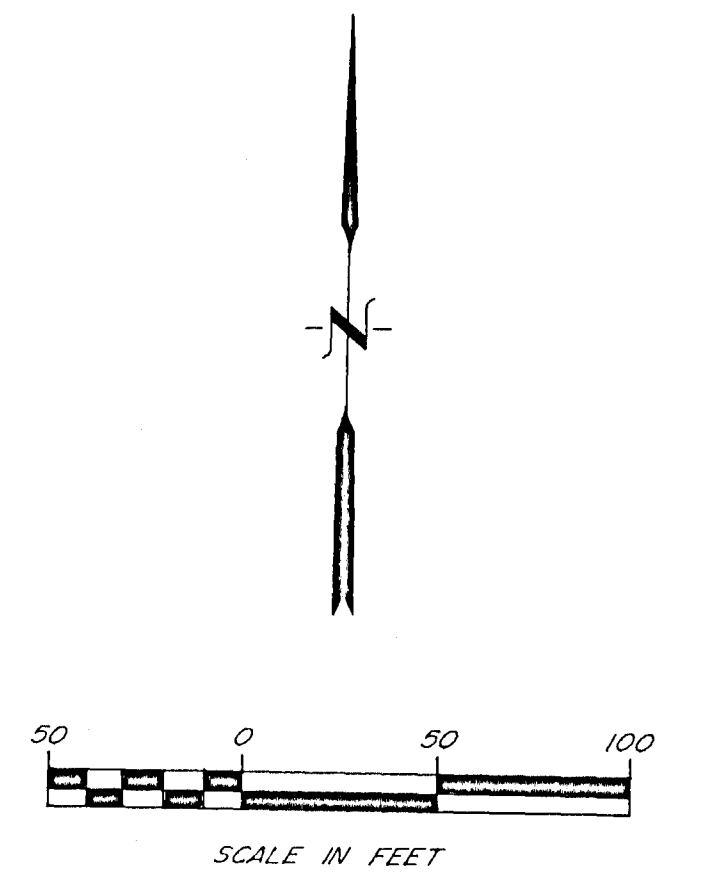
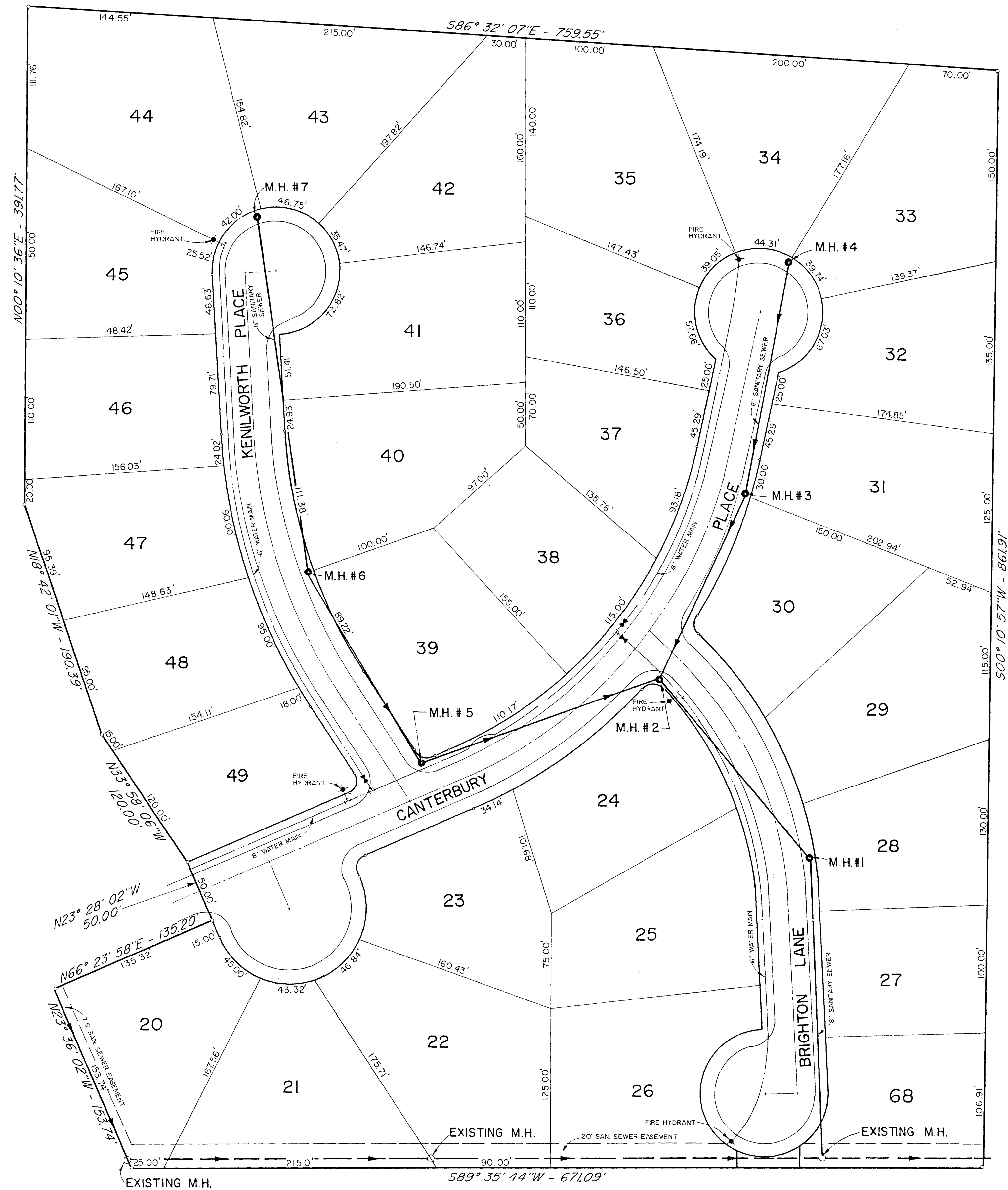
WATER AND SEWER QUANTITIES

ITEM	QUANTITY	UNIT
Connect to Existing Main	1	Ea.
8" Sanitary Sewer (0'-6")	212	L.F.
8" Sanitary Sewer (6'-8")	915	L.F.
8" Sanitary Sewer (8'-10")	293	L.F.
8" Ductile Iron Main (0'-6")	40	L.F.
48" Standard Manholes (0'-6")	1	Ea.
48" Standard Manholes (6'-8")	5	Ea.
48" Standard Manholes (8'-10")	1	Ea.
Undercut and Select Backfill	200	C.Y.
6" Sanitary Sewer Service	1550	L.F.
6" Service Tee	42	Ea.
Service Markers	49	Ea.
Connect to Existing Water Main	1	Ea.
8" PVC Water Main, C-900, Class 150	720	L.F.
6" PVC Water Main, C-900, Class 150	900	L.F.
6"x6"x6" Tee	3	Ea.
8"x8"x6" Tee	4	Ea.
8" Gate Valve w/Box	1	Ea.
6" Gate Valve w/Box	2	Ea.
6" Fire Hydrant (with valve)	5	Ea.
Service Assemblies	49	Ea.
3/4" Service Line	1500	L.F.
Service Markers	49	Ea.

INDEX OF DRAWINGS

Cover Sheet	1
General Layout	2
Drainage Layout	3
Plan Profile Sheets	4 - 6
Water Details	7
Sewer Details	8
Typical Drainage Details	9

VICINITY MAP

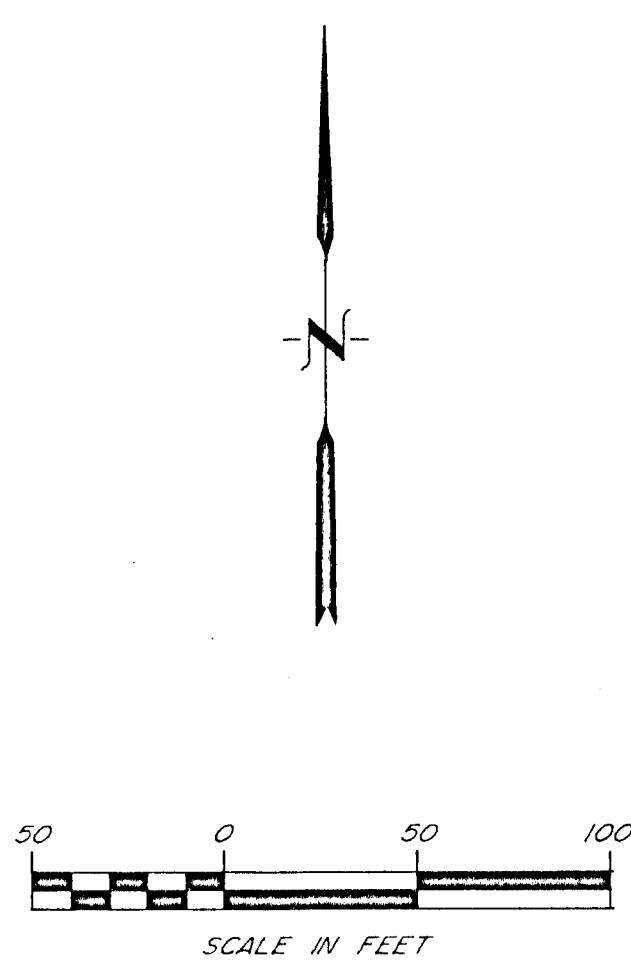
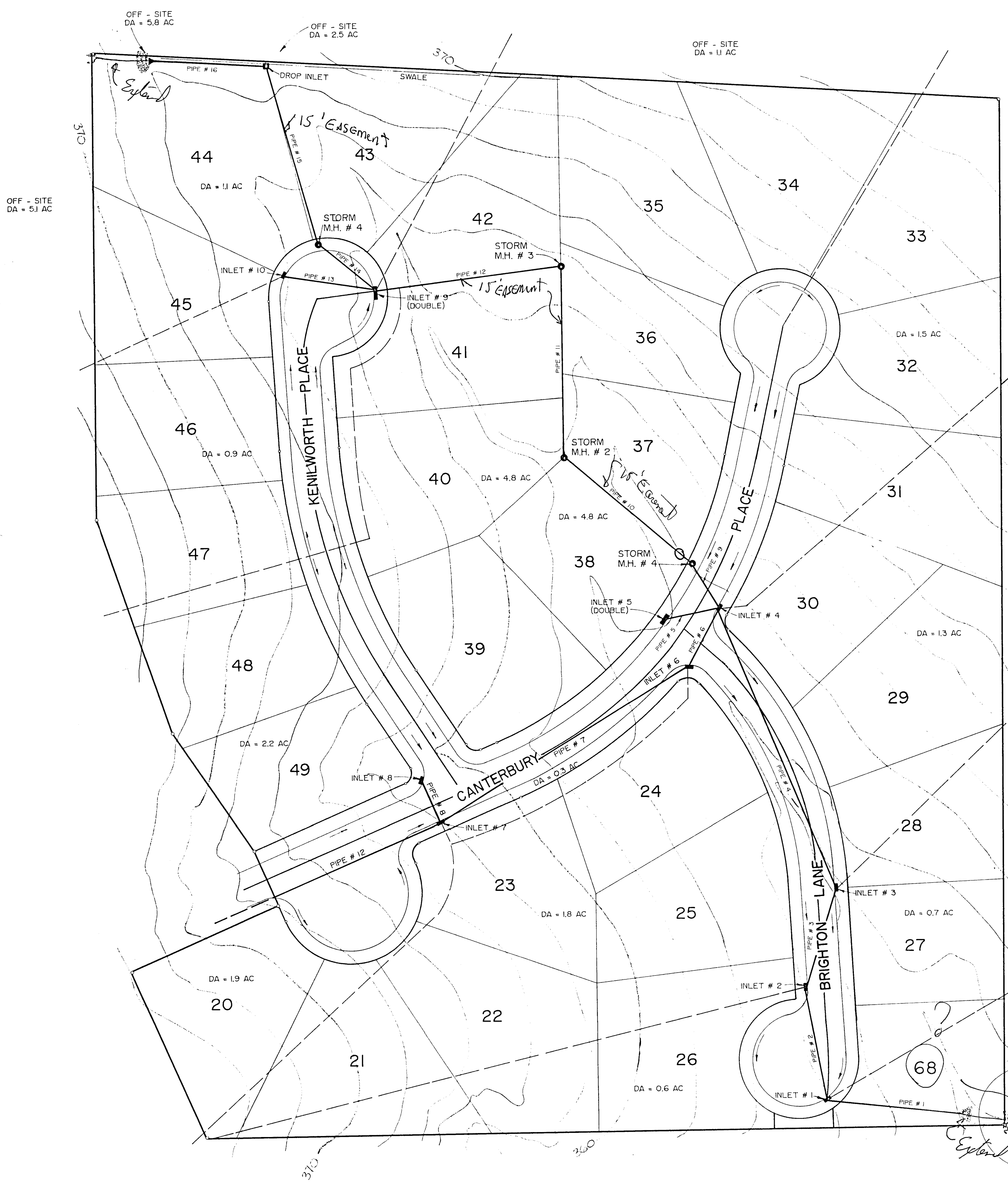


TYPICAL STREET SECTION

*Not same type
as in phase I*

- LEGEND
- MANHOLE
 - ⊕ FIRE HYDRANT
 - ⊞ GATE VALVE
 - ⊥ TEE

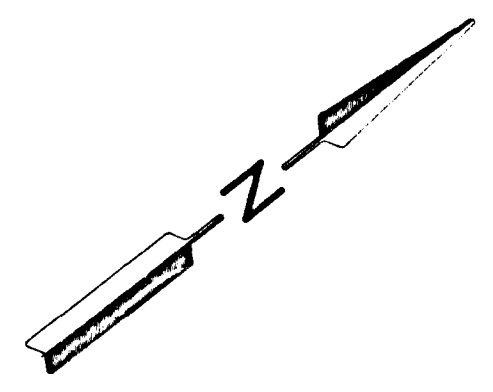
CANTERBURY SUBDIVISION		
GENERAL LAYOUT		
BROWNING INC. CONSULTING ENGINEERS JACKSON, MISSISSIPPI		
DESIGNED BY : P.L.B.	SCALE : 1" = 50'	SHEET 2 OF 9
DRAWN BY : J.F.	DATE : JULY, 1993	



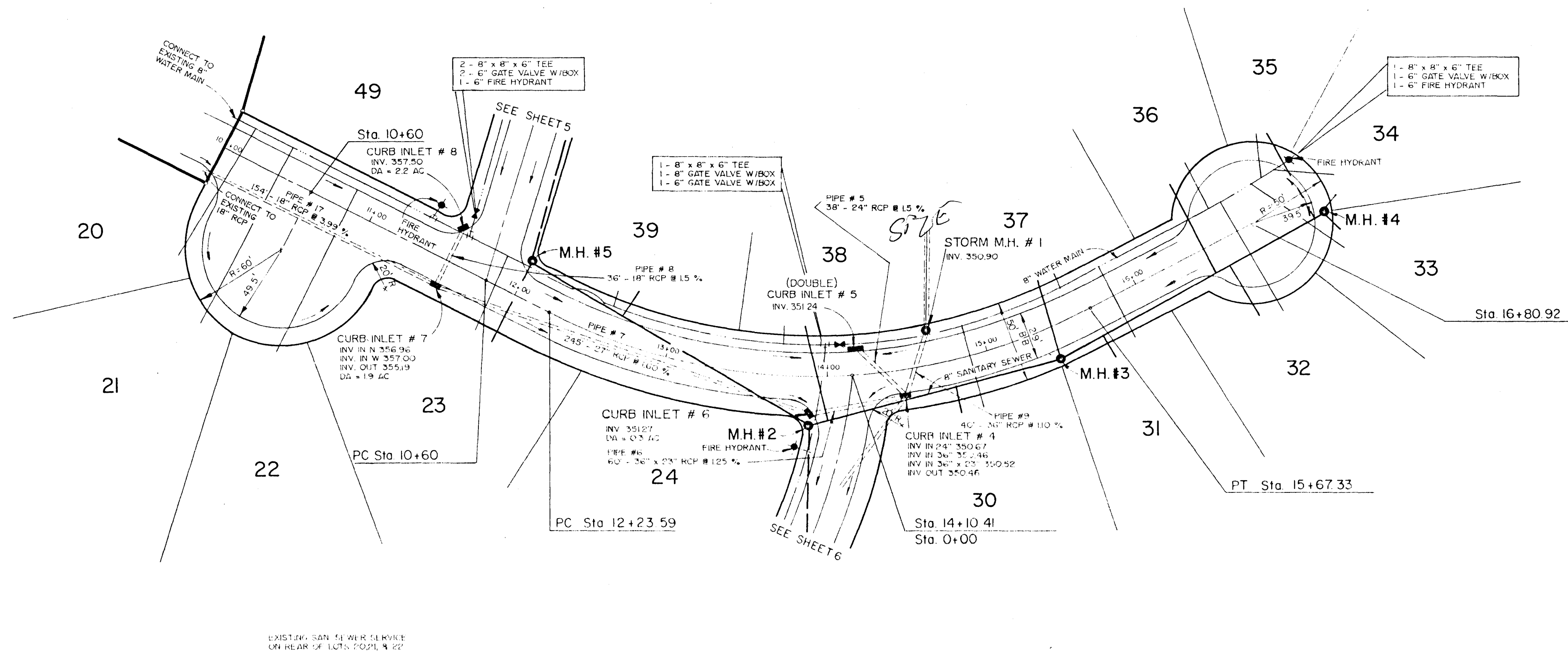
*Need
Size on
all Downes
Pipe*

*Check size of
St. Andrews
Culverts & Contact
St. Andrews - Bulow Plumber*

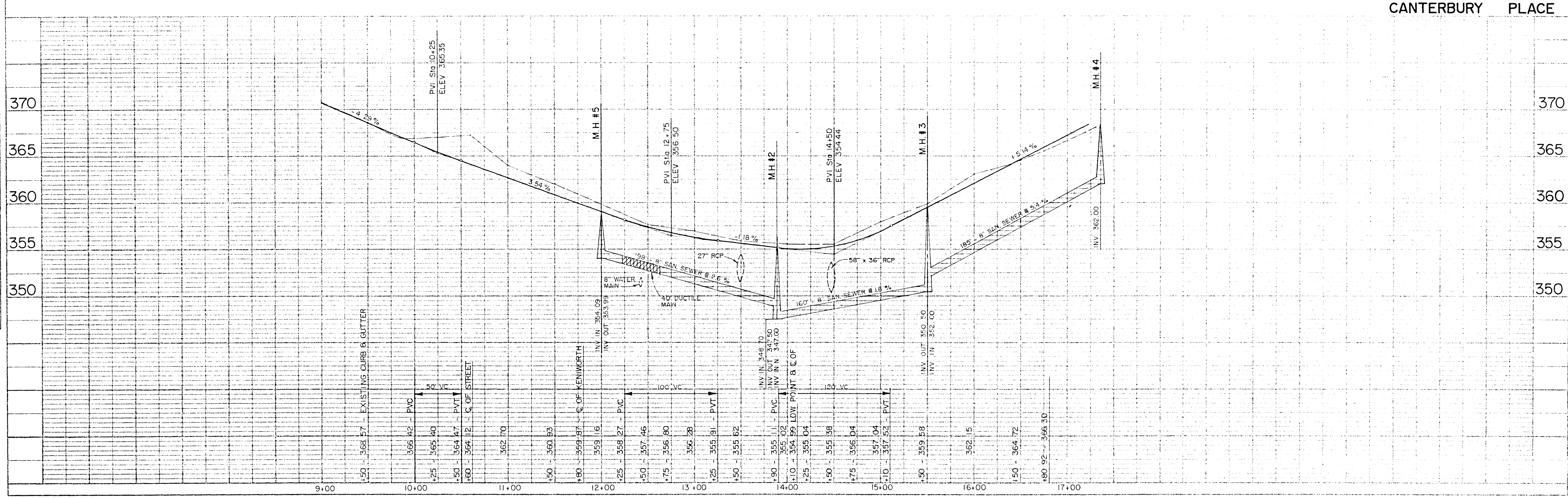
CANTERBURY SUBDIVISION		
DRAINAGE LAYOUT		
BROWNING INC. CONSULTING ENGINEERS JACKSON, MISSISSIPPI		
DESIGNED BY : P.L.B.	SCALE : 1" = 50'	SHEET 3 OF 9
DRAWN BY : J.F.	DATE : JULY, 1993	



DATE	
BY	
PLAN	SUPPLIED
NOTE BOOK	PLOTTED
ALIGNMENT CHECKED	
PT. OF WAY CHECKED	



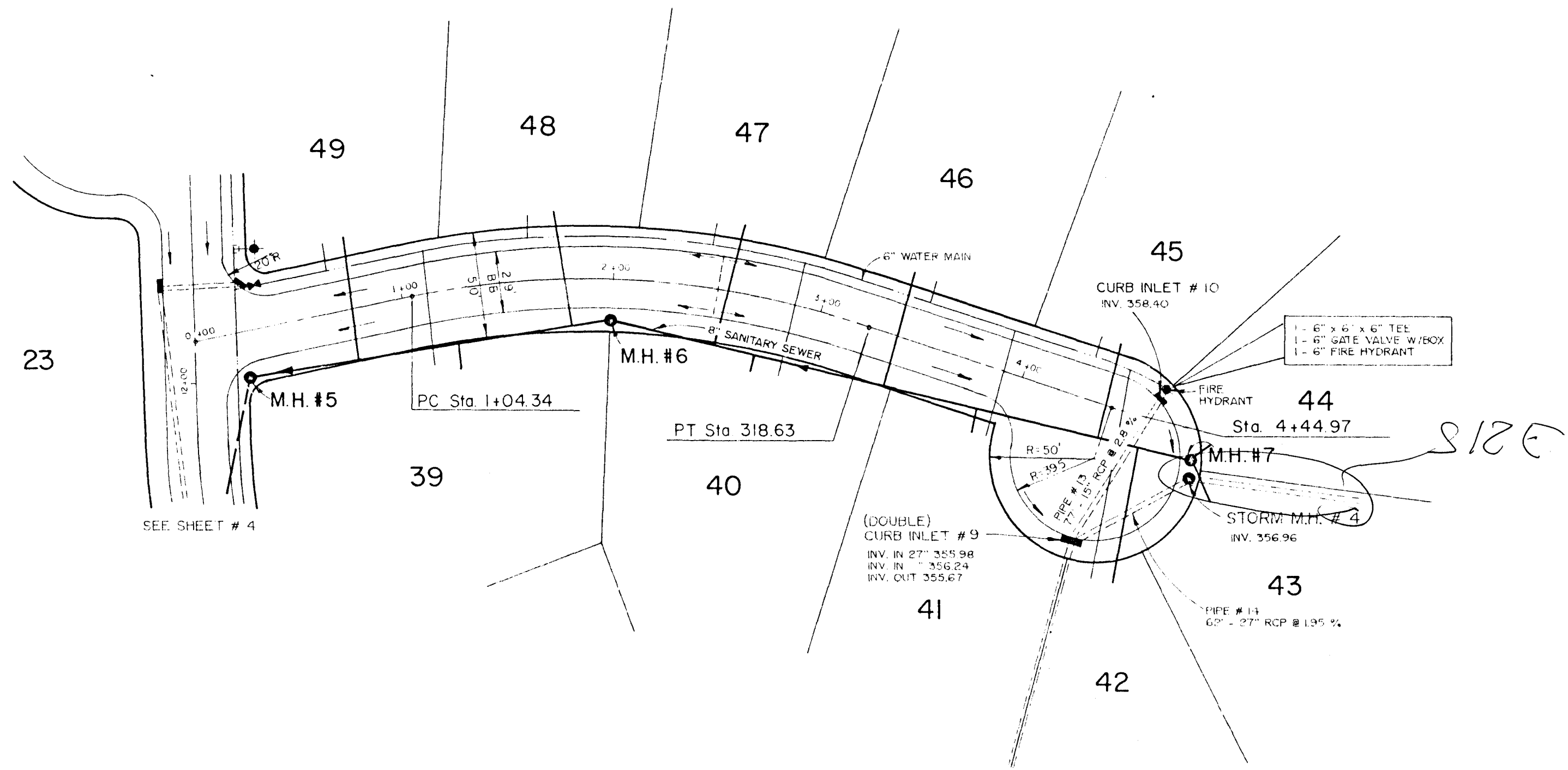
DATE	
BY	
PROFILE	SUPPLIED
NOTE BOOK	PLOTTED
GRADES CHECKED	
VERTICAL CURVES CHECKED	



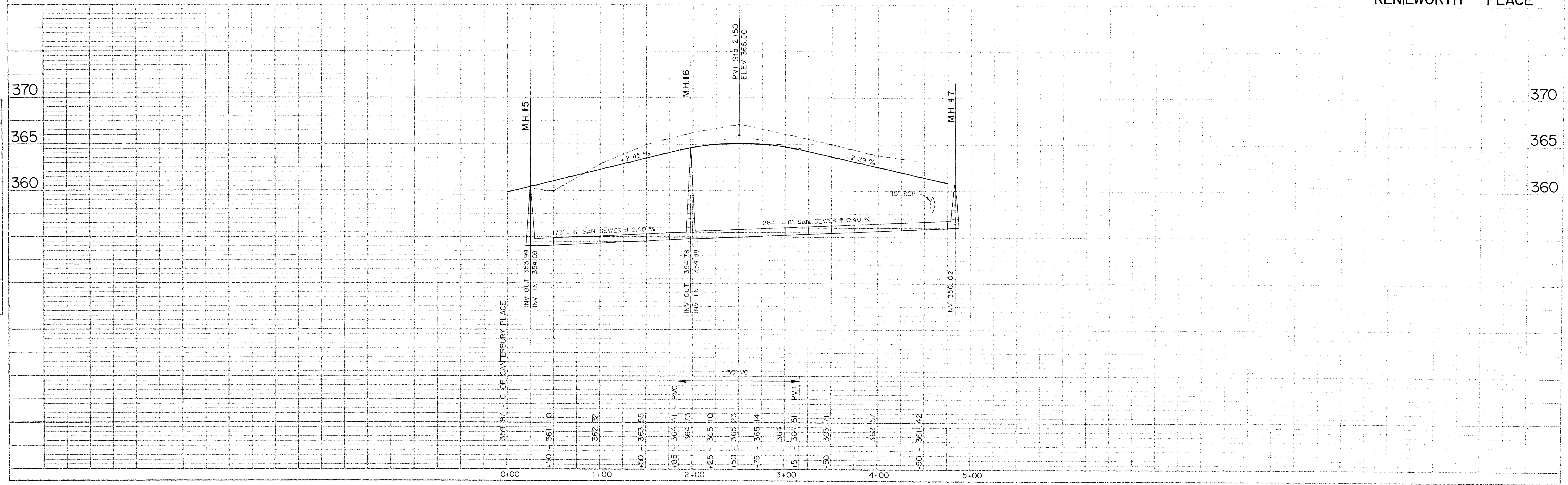
CANTERBURY PLACE

PLANS	DESIGNED BY	DATE
NOTED BY	CHECKED BY	
APPROVED BY	PROJECT NO.	
	DATE	

PROFILE	DESIGNED BY	DATE
NOTED BY	CHECKED BY	
APPROVED BY	PROJECT NO.	
	DATE	

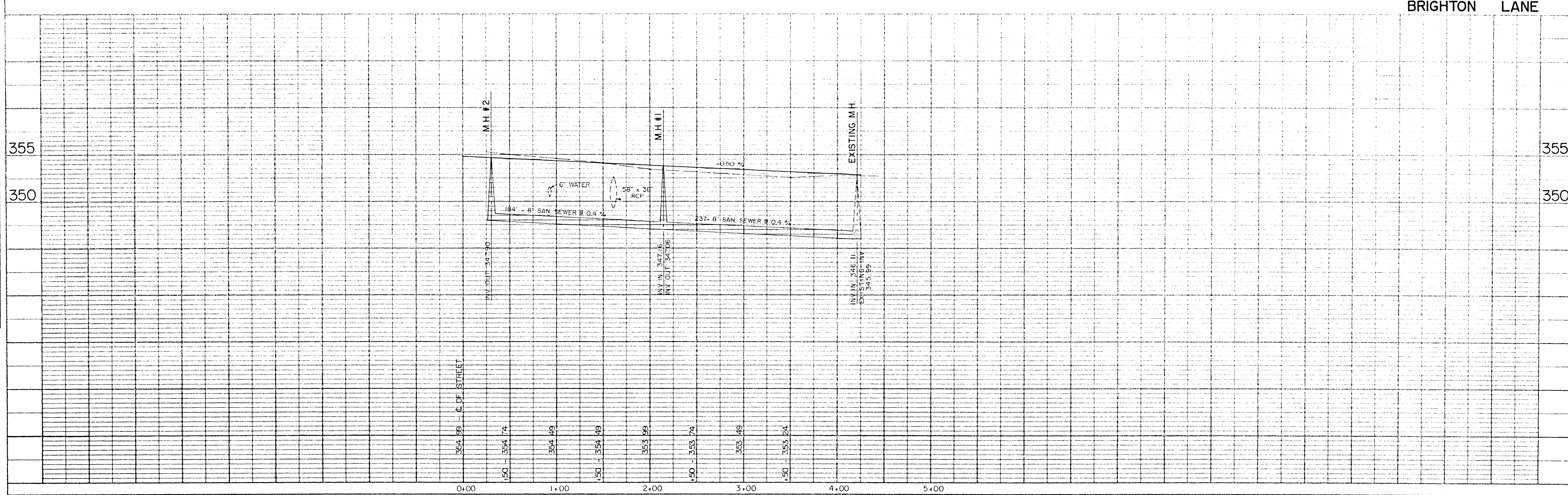
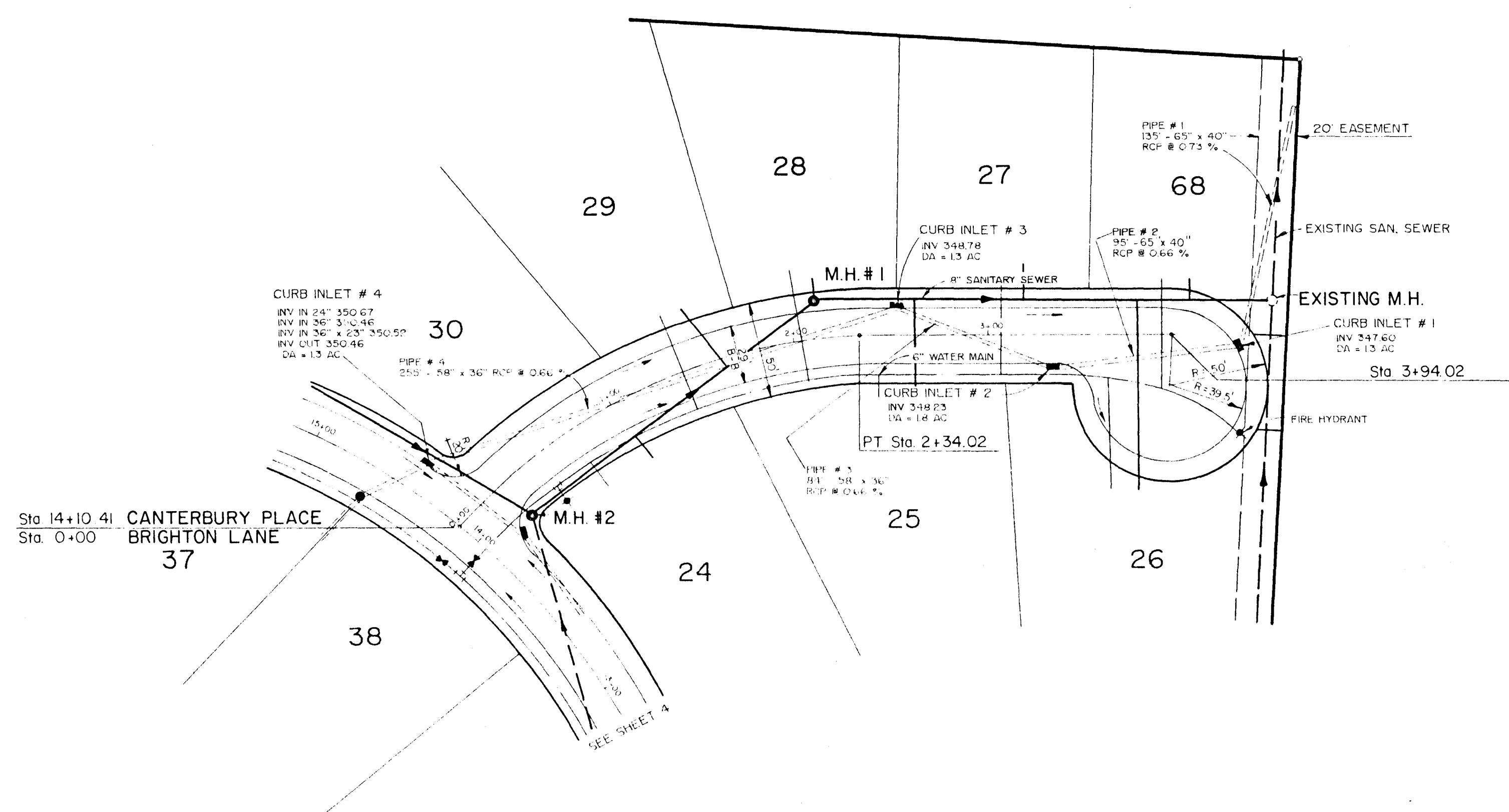


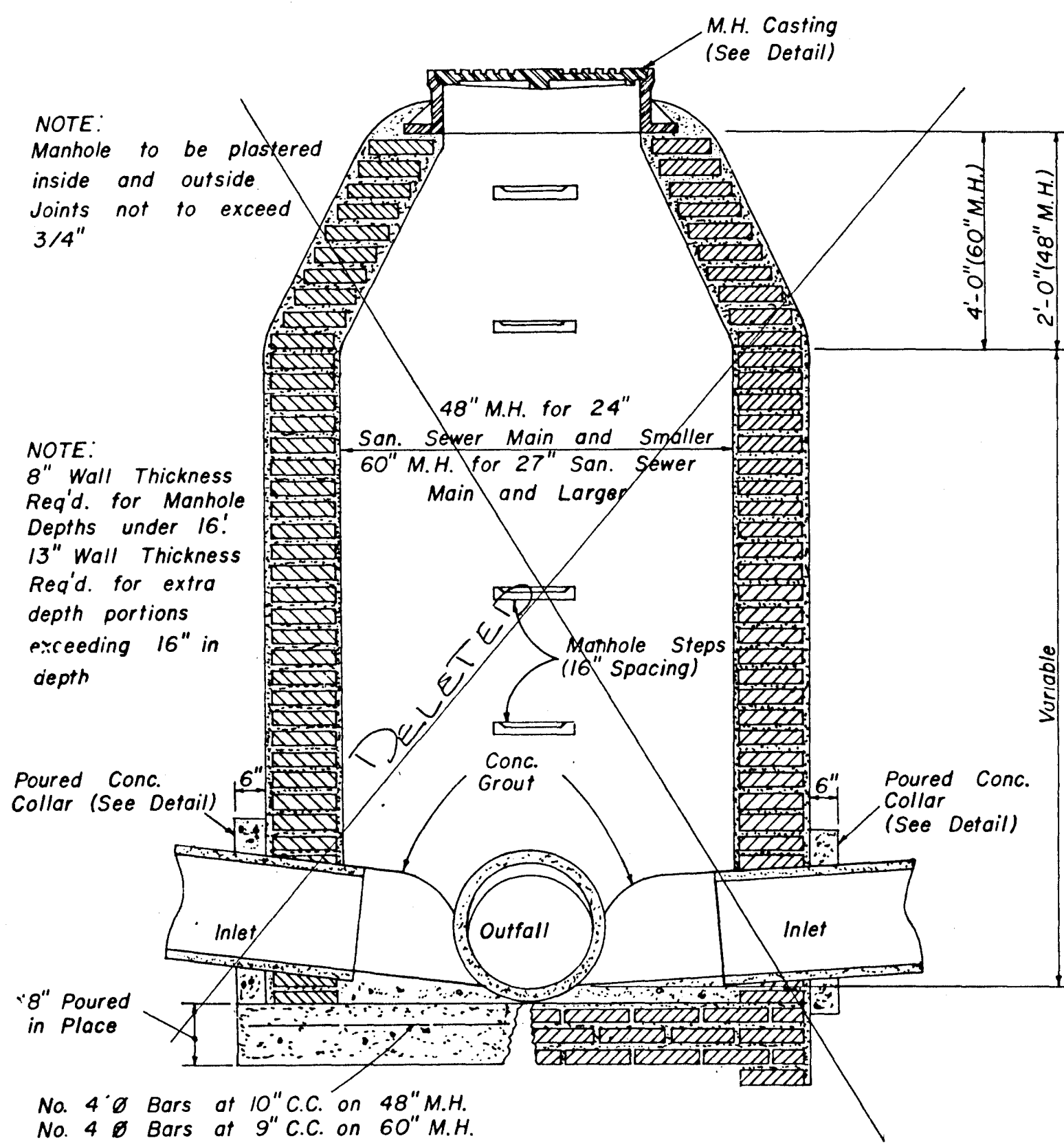
KENILWORTH PLACE



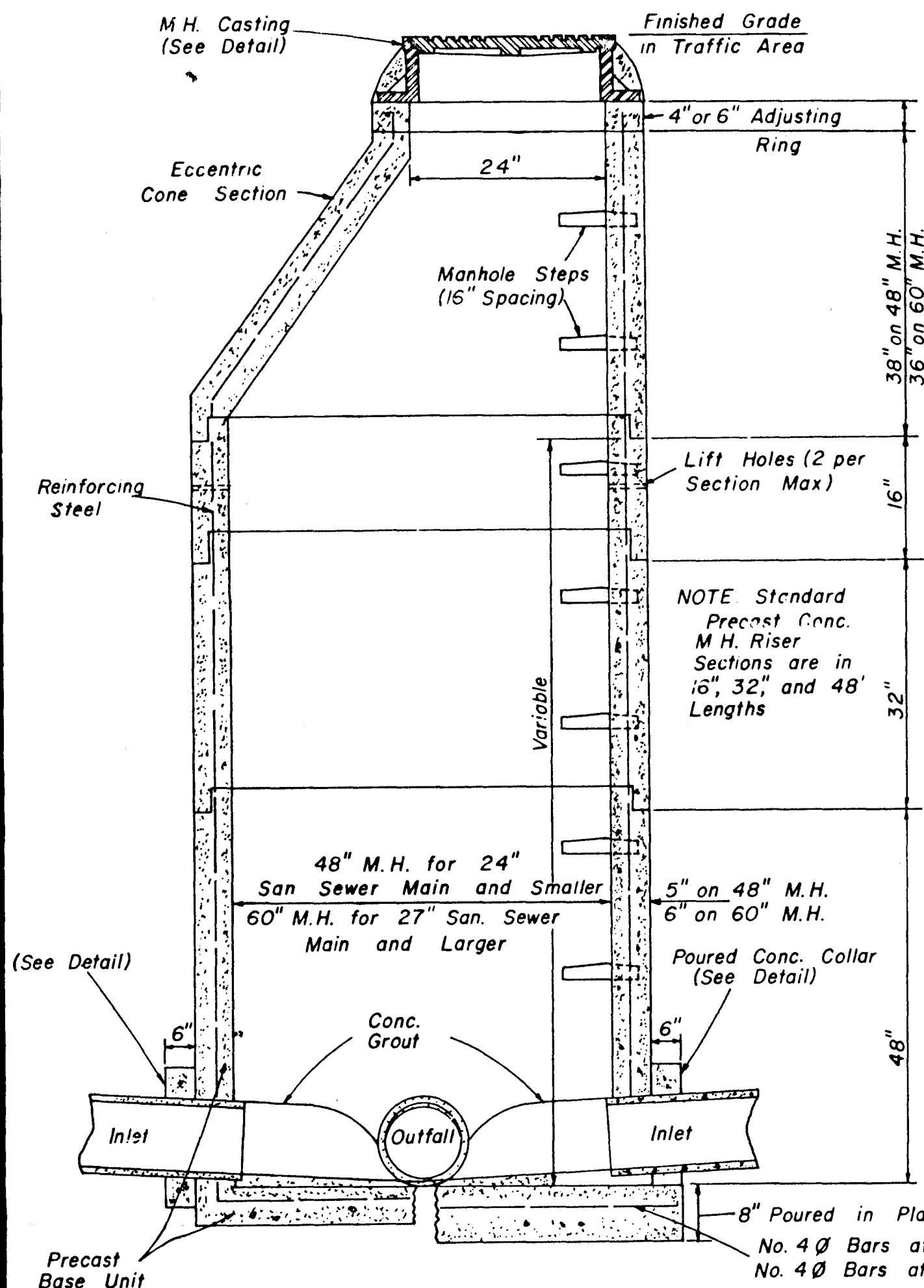
DATE	
BY	
PLAN	DESIGNED
NOTE BOOK	NOTED
NO.	

DATE	
BY	
PROFILE	DESIGNED
NOTE BOOK	NOTED
NO.	

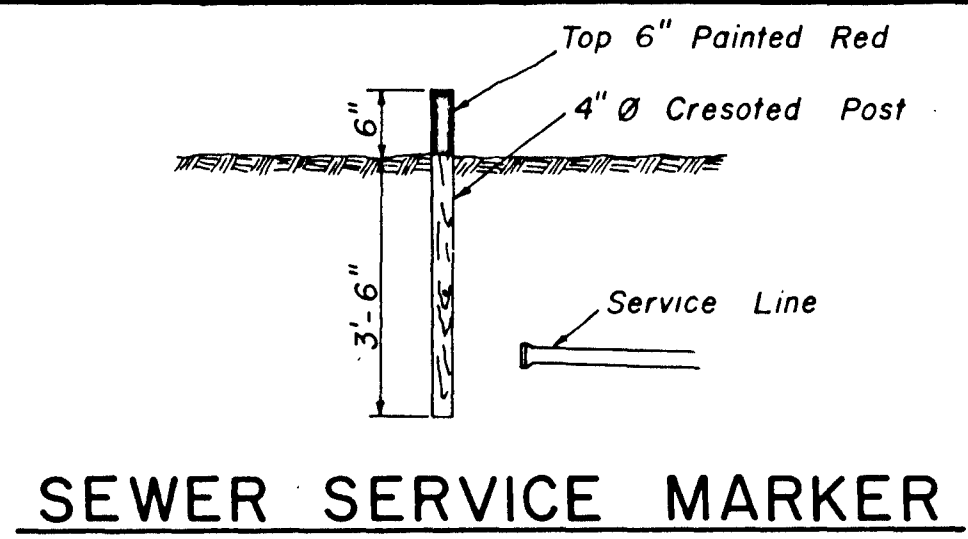




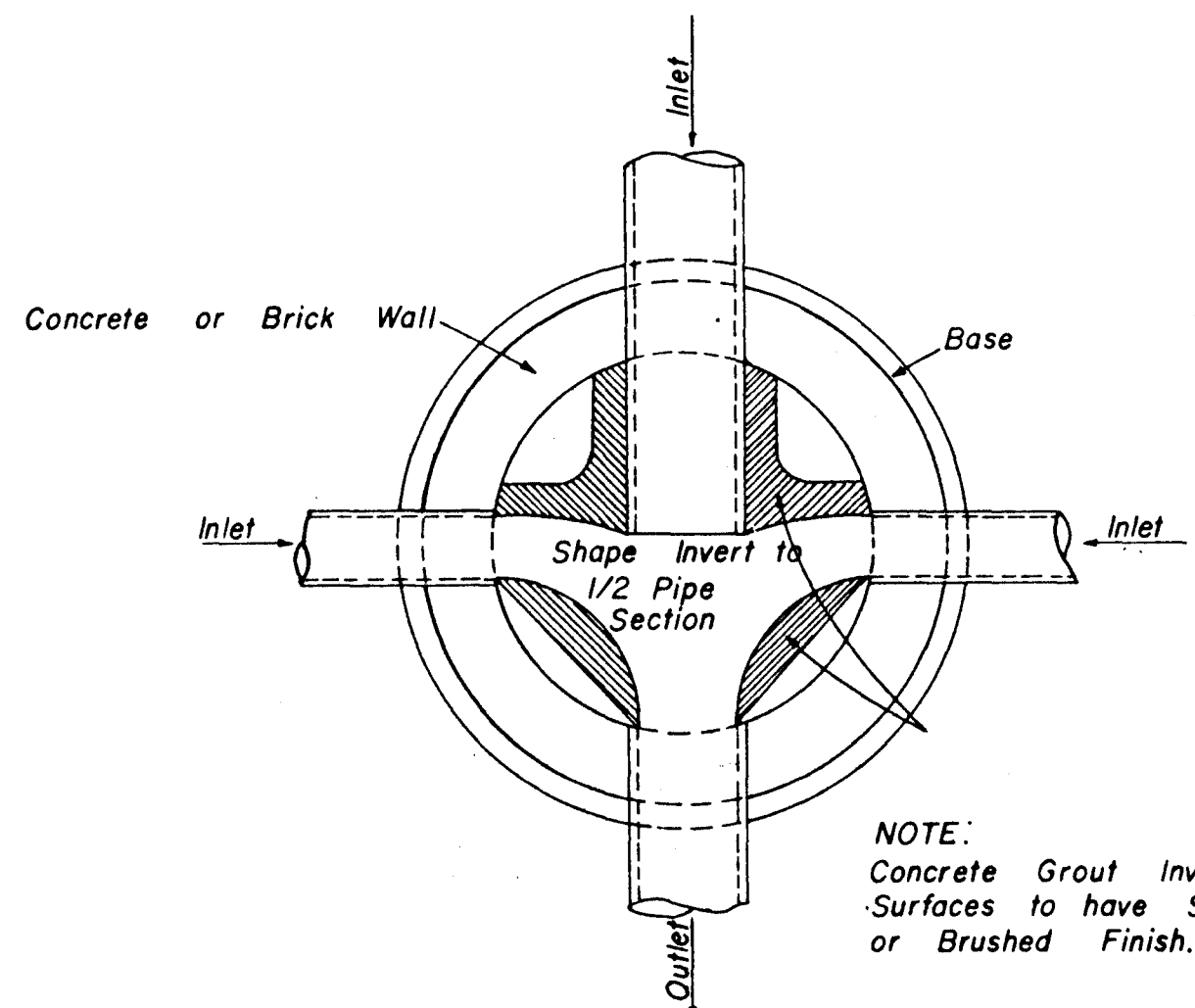
**SECTION
STANDARD BRICK MANHOLE**



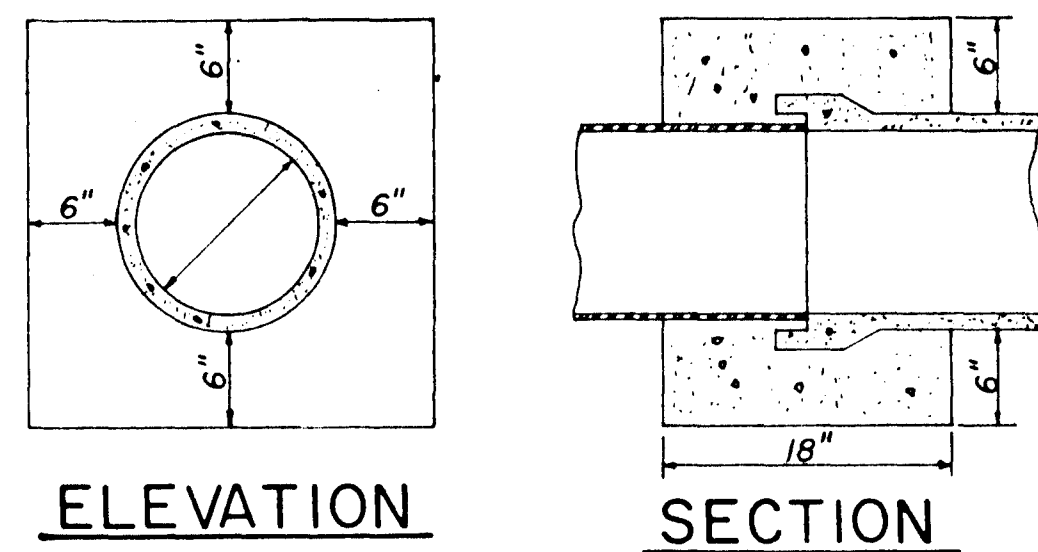
**SECTION
PRECAST CONCRETE MANHOLE**



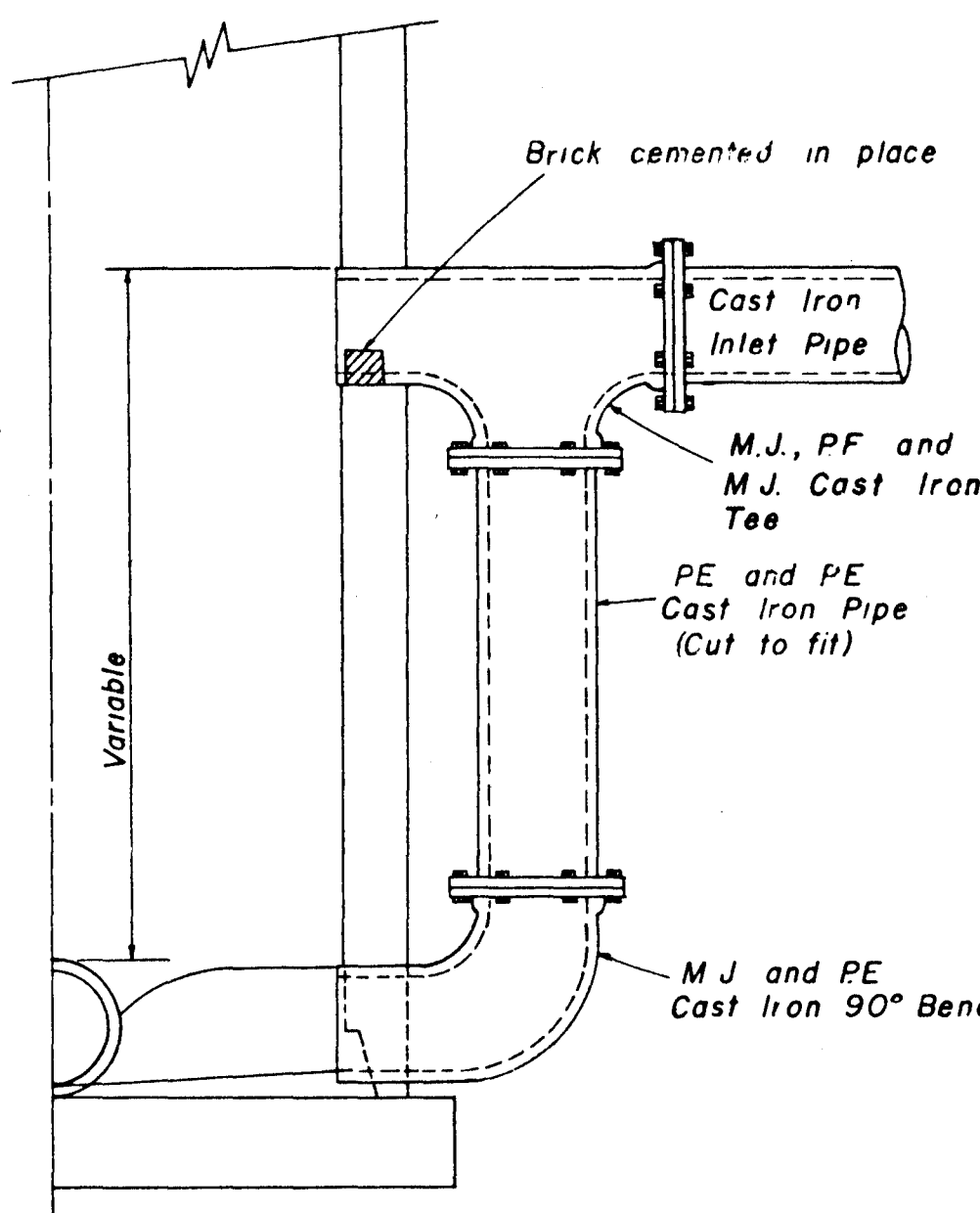
SEWER SERVICE MARKER



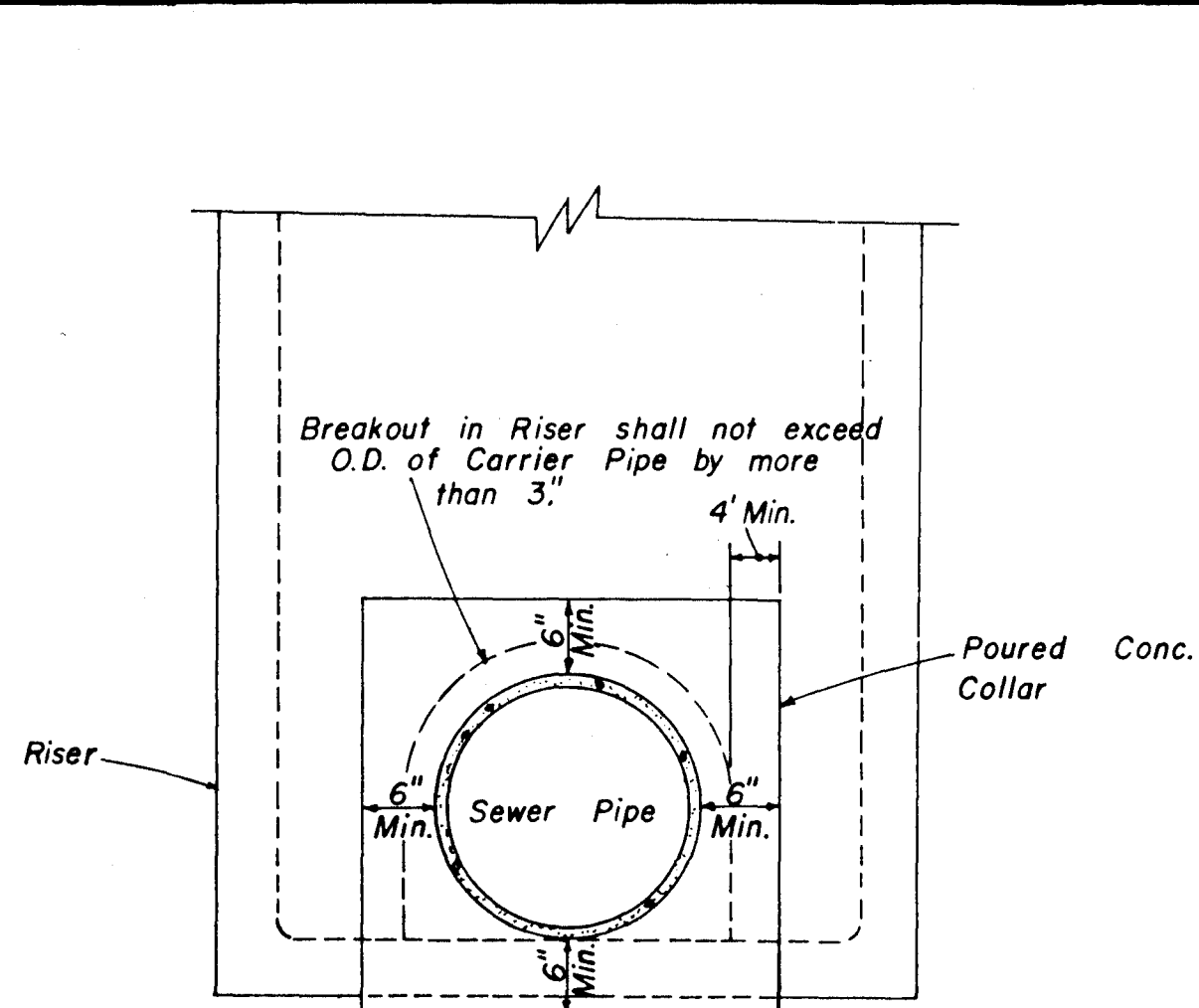
**PLAN OF MANHOLE
FLOW CHANNELS**



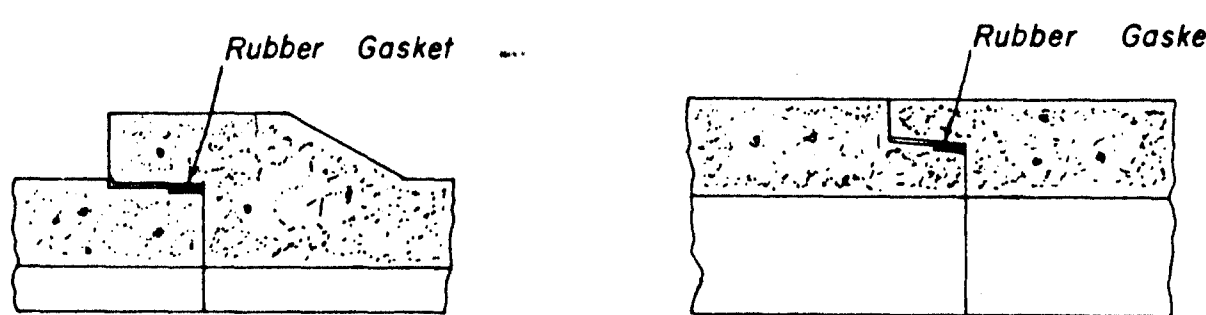
CONCRETE COLLAR DETAILS



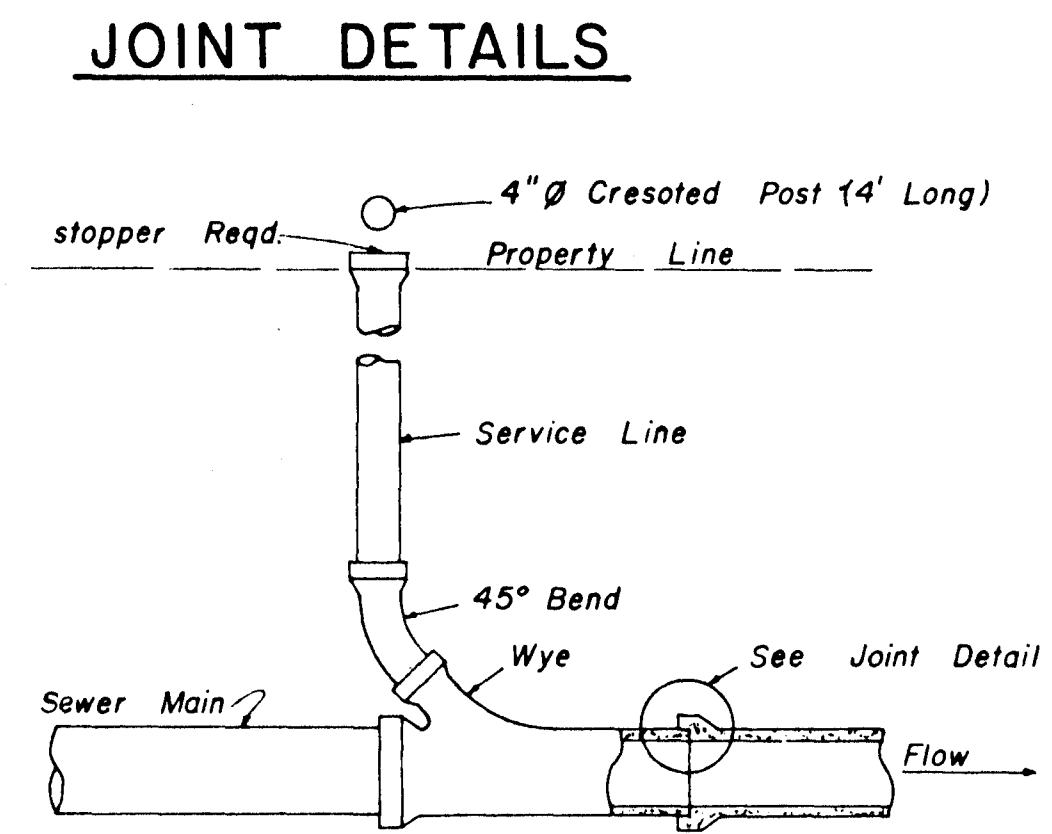
**HALF SECTION
MANHOLE WITH DROP CONNECTION**



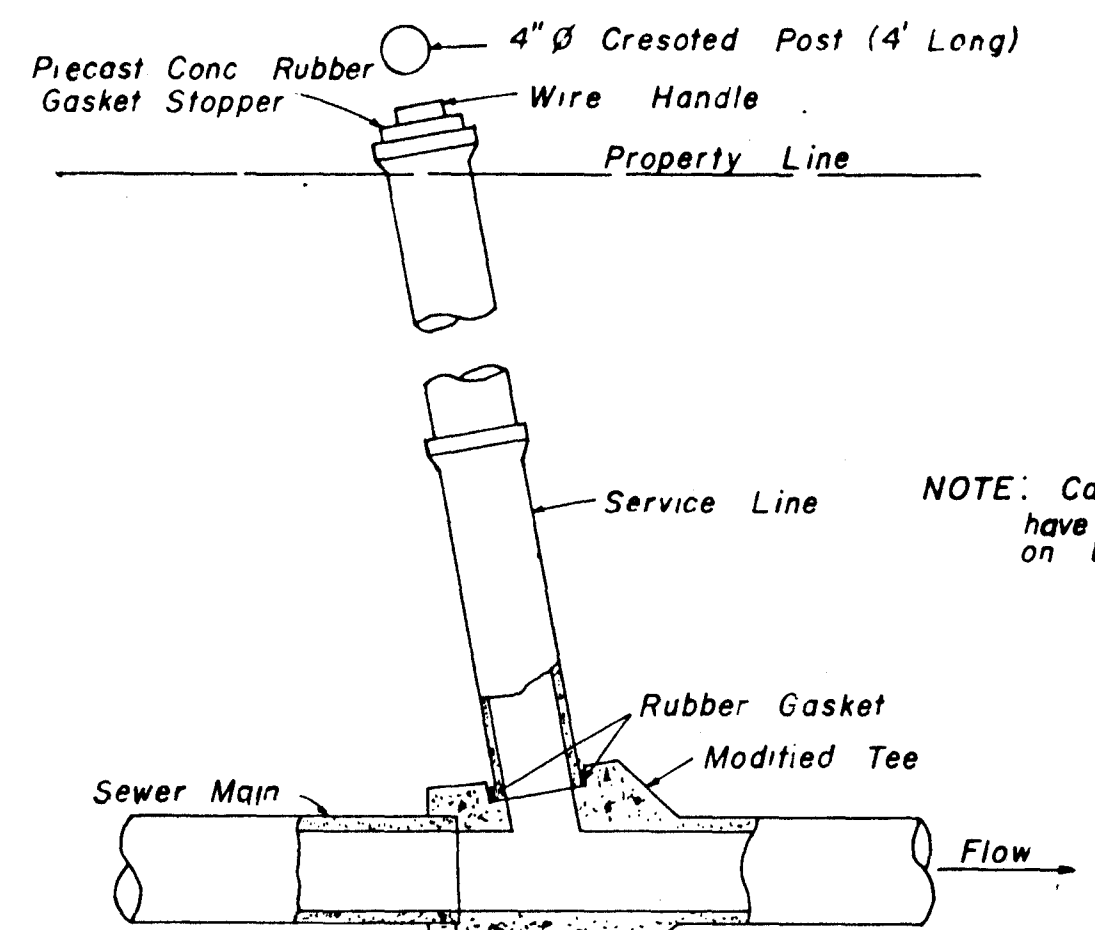
**ELEVATION
CONCRETE COLLAR AT
MANHOLE CONNECTION**



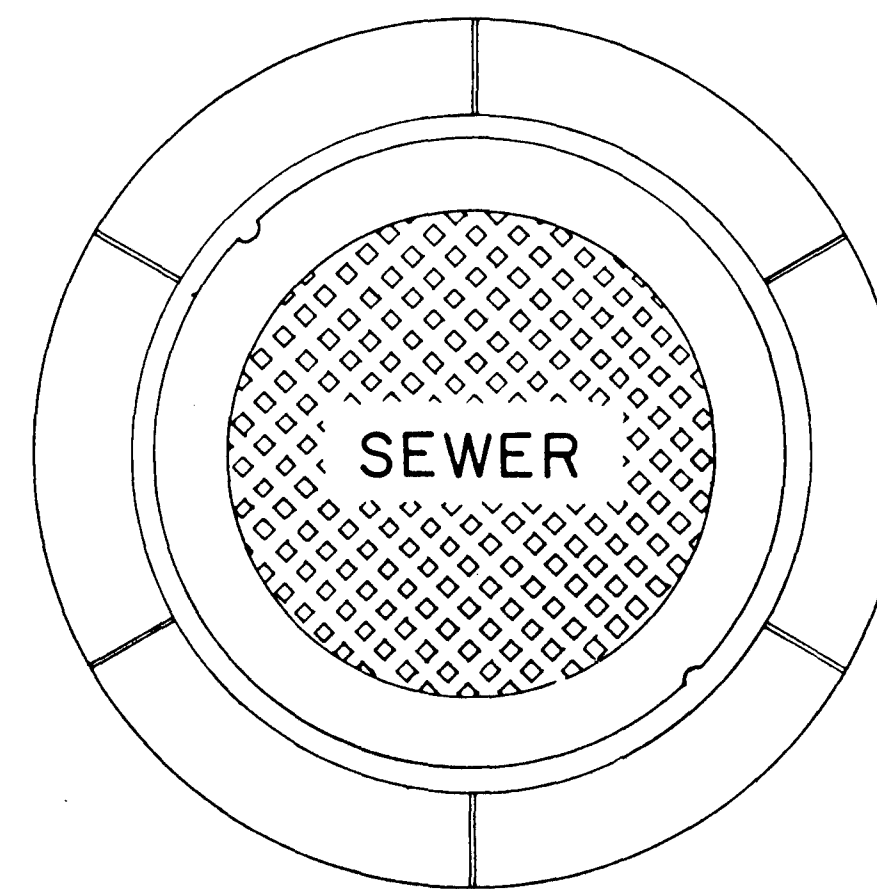
**BELL & SPIGOT TONGUE & GROOVE
JOINT DETAILS**



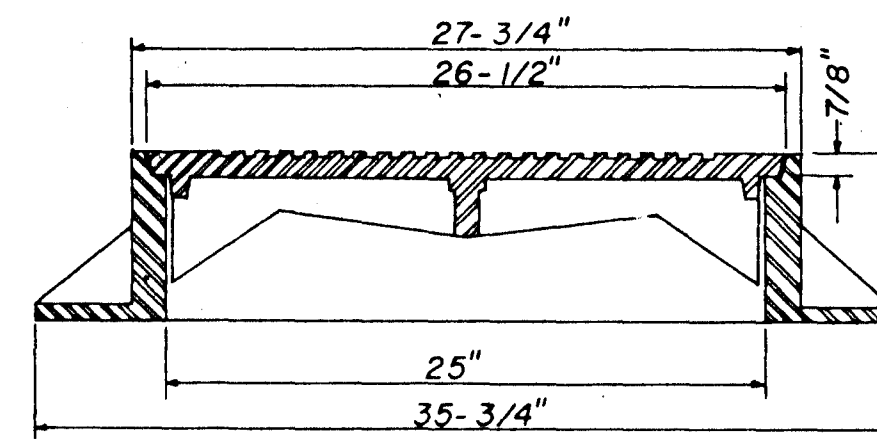
**TYPICAL SERVICE TO PROPERTY LINE
WITH WYE JOINT**



**TYPICAL SERVICE TO PROPERTY LINE
WITH MODIFIED TEE JOINT**

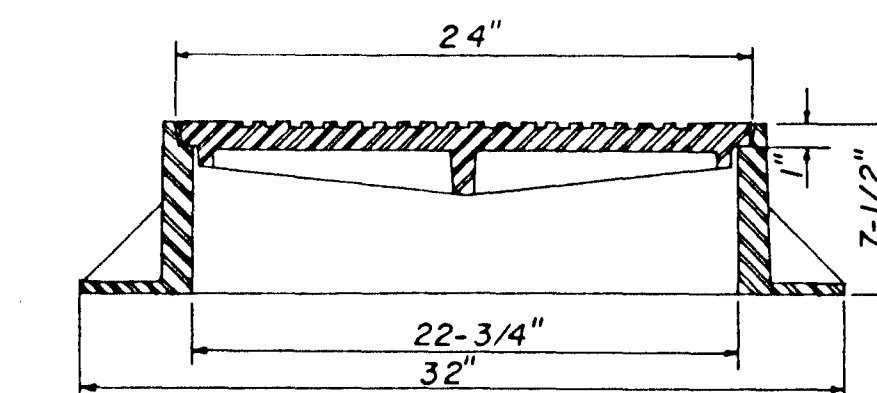


**PLAN
MANHOLE CASTING**



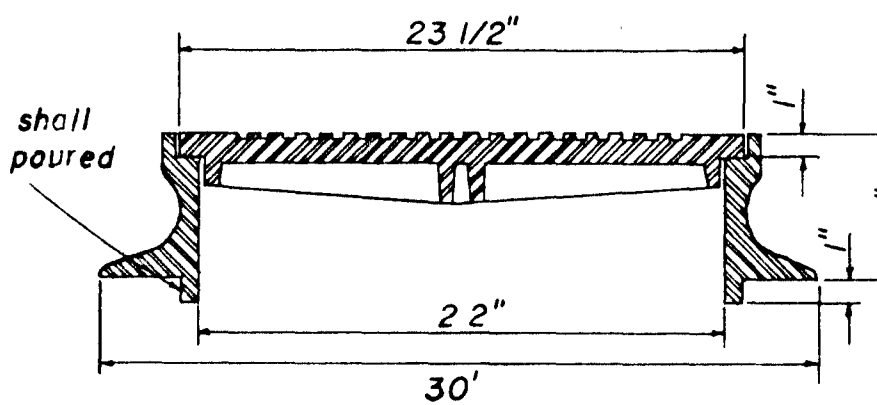
**SECTION
TYPE "A" MANHOLE CASTING**

NOTE: 1. Use Type "A" Manhole Casting in Street R.O.W.
2. Use Harper No. 2, City of Jackson Standard (420 lbs.) or Vulcan No. VM-15, City of Jackson Standard (420 lbs.)



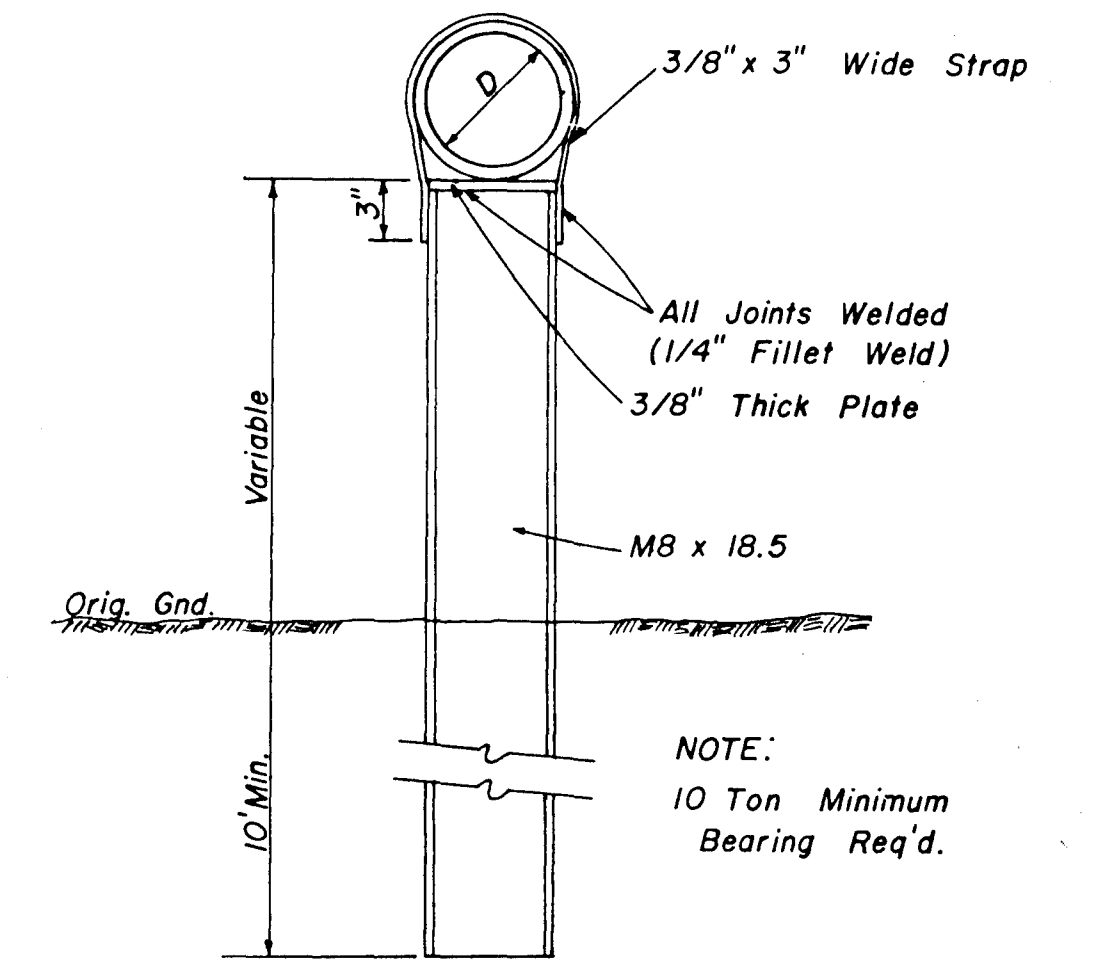
**SECTION
TYPE "B" MANHOLE CASTING**

NOTE: 1. Use Type "B" Manhole Casting for any Manhole not in a Street R.O.W.
2. Use Harper No. 1 (M.S.P.E. Standard) Light Weight (330 lbs.) or Vulcan No. VM-17 (300 lbs.) or Opelika Foundry No. C-2-1 (325 lbs.)

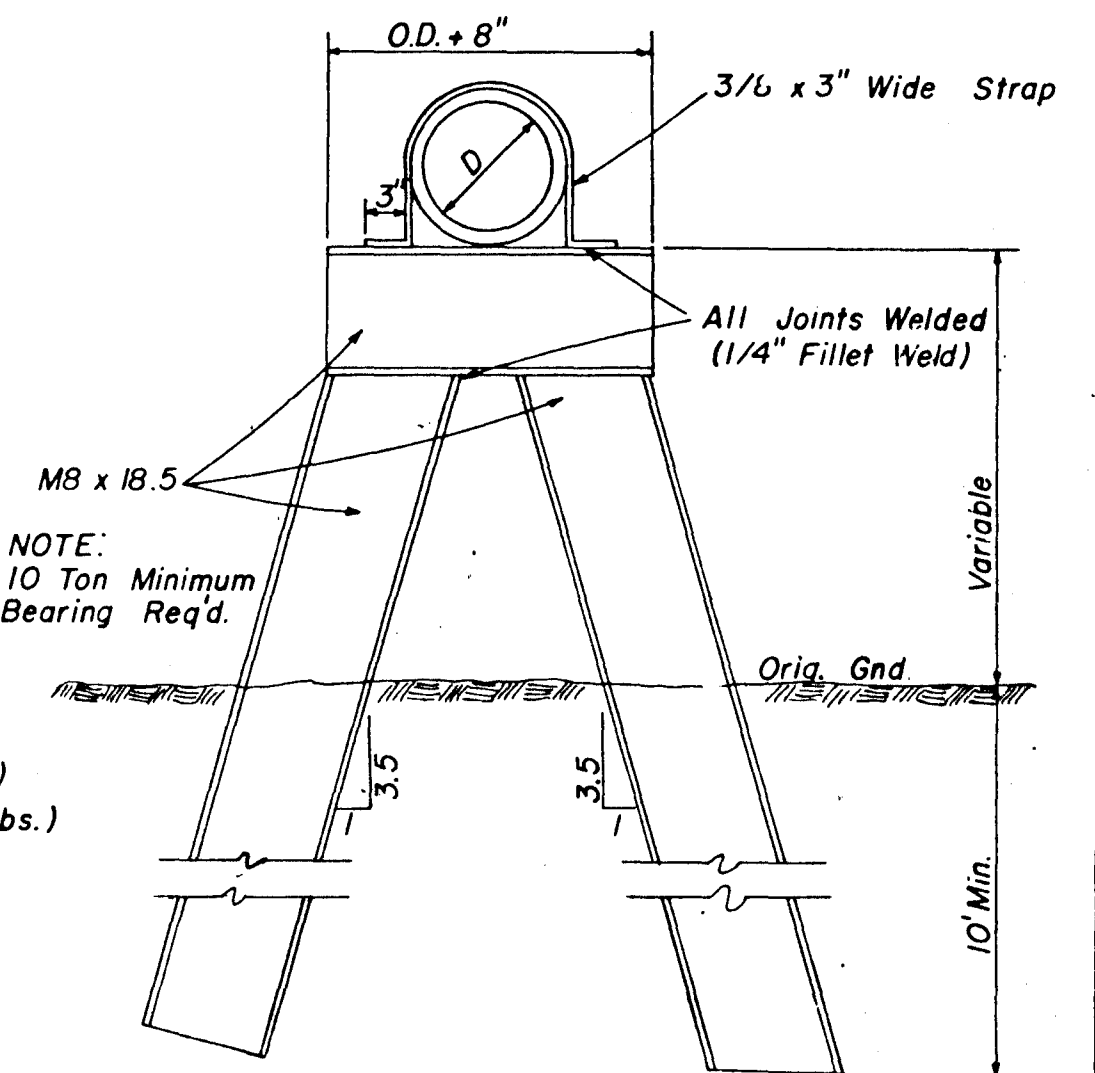


**SECTION
TYPE "C" MANHOLE CASTING**

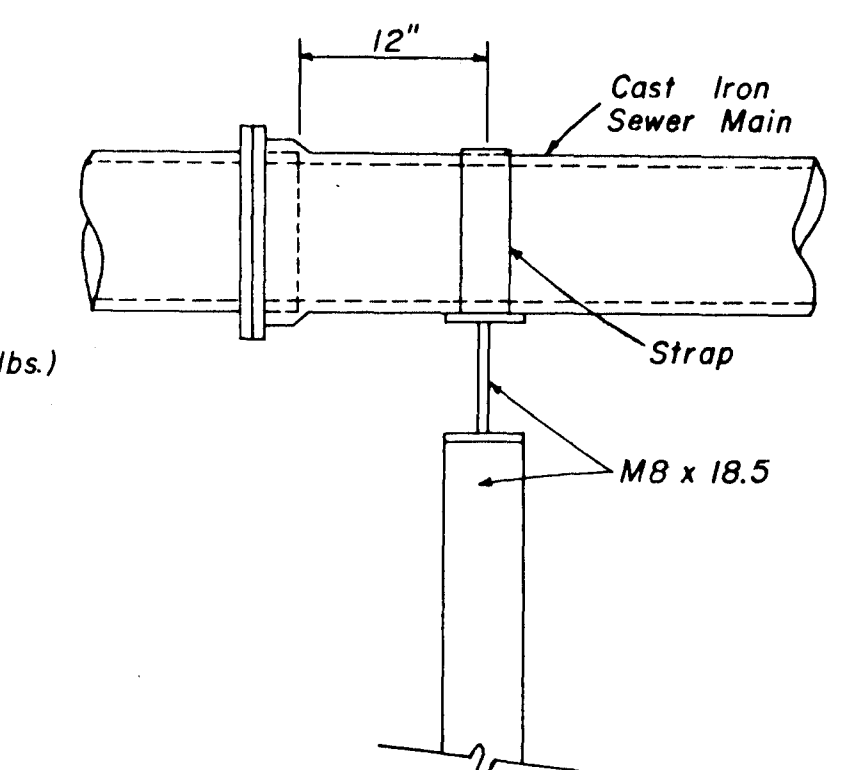
NOTE: 1. Use Type "C" Manhole Casting for Precast Manhole not in a Street R.O.W.
2. Use Harper No. 8 (330 lbs.) or Neenah No. R-1779 (300 lbs.) or Vulcan No. VM-7 (330 lbs.)



**DETAIL
TYPE "A" PIER**



**DETAIL
TYPE "B" PIER**



**SIDE ELEVATION
TYPE "B" PIER**

**SANITARY SEWER
STANDARD DETAILS**

BROWNING INC.
Consulting Engineers Jackson, Mississippi

DRAWN BY: J.F. DATE: JULY, 1993

CHECKED BY: P.L.B. SCALE: AS SHOWN

8 OF 9

