



NO MAP

81

4

3

111

97

MADISON COUNTY T1N-R1E 33 34  
HINDS COUNTY T6N-R1E

CITY LIMITS 1971

CITY LIMITS 1971

NOTE: SEWER MAINLINE  
LOCATIONS APPROXIMATE  
SEE P. 9-901



97-B

59.0 AC.

61.0 AC

101.2 AC

58 AC

70.0 AC

33

34

81-A

111-A

97-A

97

LIVINGSTON ROAD

M.P. & L. 150' EASEMENT

33 34

MISS. POWER AND LIGHT COMPANY 150' EASEMENT

COSTAS LAKE

HIGHLAND COLONY PARKWAY

MADISON JACKSON

CORPORATE

COUNTY

33 34

COUNTY

LINE

ROAD

HINDS

COUNTY

HANGING MOSS RD.

INTERSTATE 220

2001 M 1471 GIRL SCOUTS OFFICE

DODWOOD PARK OF LAKE OVER

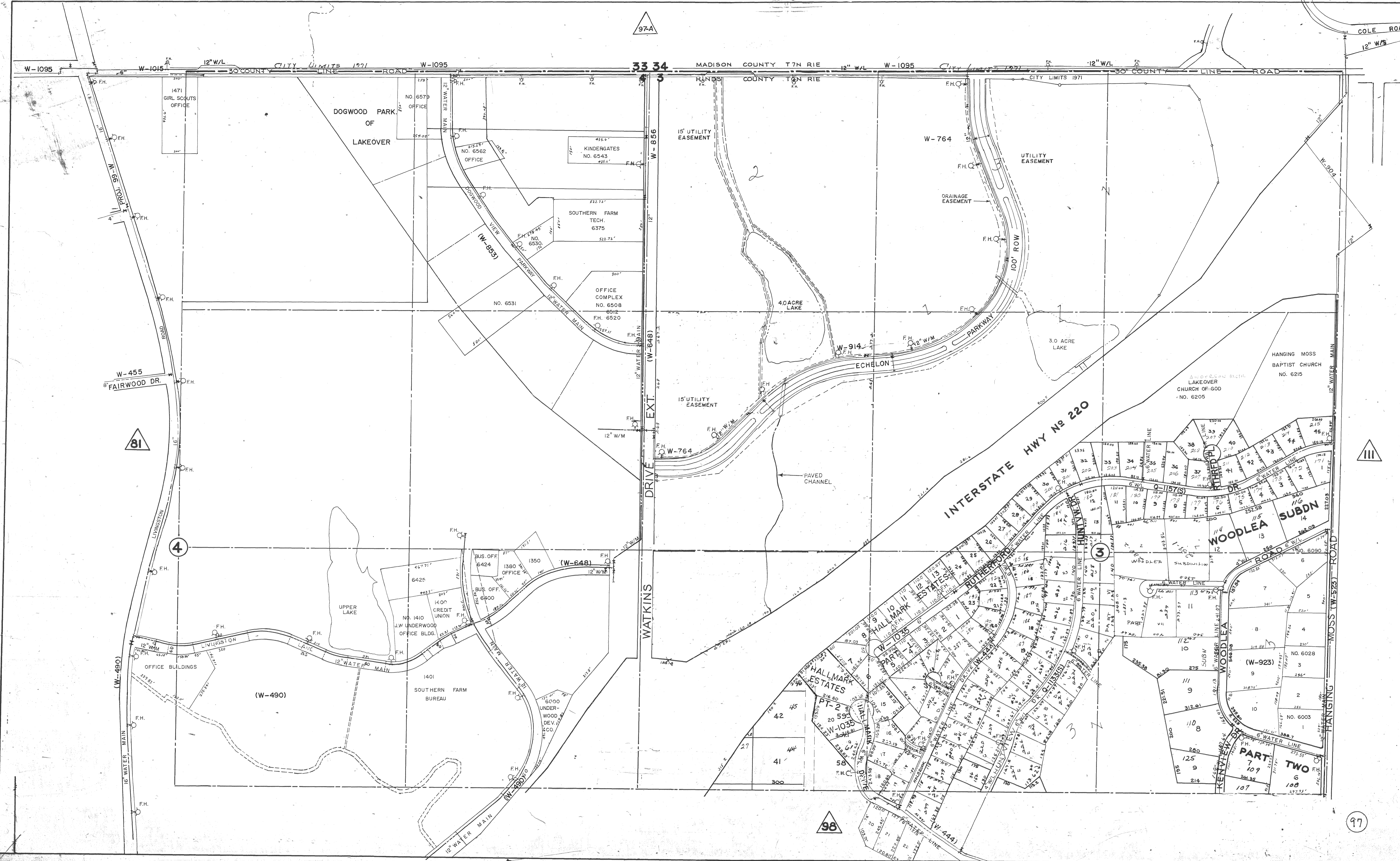
100 GPM PUMP AND STA. 40' EASEMENT QM-16/13(S)

3.4 AC. QM-16/13(S)

Q-1656(S) Q-1656(S)

Q-1656(S)

Q-1656(S)



97-A

33 34

81

4

98

97

INTERSTATE HWY No 220

WOODLEA SUBDN

HALLMARK ESTATES

RUTHERFORD

W-923

PART TWO

1471 GIRL SCOUTS OFFICE

DOGWOOD PARK OF LAKEOVER

NO. 6579 OFFICE

NO. 6562 OFFICE

KINDERGATES NO. 6543

SOUTHERN FARM TECH. 6375

OFFICE COMPLEX NO. 6508

NO. 6531

4.0 ACRE LAKE

3.0 ACRE LAKE

HANGING MOSS BAPTIST CHURCH NO. 6215

LAKEOVER CHURCH OF GOD NO. 6205

BUS. OFF. 6424

OFFICE 1380

OFFICE 1350

BUS. OFF. 6400

OFFICE 1400

CREDIT UNION

NO. 1410 J.W. UNDERWOOD OFFICE BLDG.

OFFICE 1401

SOUTHERN FARM BUREAU

6000 UNDERWOOD DEV. CO.

OFFICE 42

OFFICE 45

OFFICE 44

OFFICE 41

OFFICE 300

45

20

55

56

57

58

59

60

10

11

12

13

14

15

16

17

18

19

20

21

22

23

24

25

26

27

28

29

30

31

32

33

34

35

36

37

38

39

40

41

42

43

44

45

46

47

48

49

50

51

52

53

54

55

56

57

58

59

60

61

62

63

64

65

66

67

68

69

70

71

72

73

74

75

76

77

78

79

80

81

82

83

84

85

86

87

88

89

90

91

92

93

94

95

96

97

98

99

100

101

102

103

104

105

106

107

108

109

110

111

112

113

114

115

116

117

118

119

120

121

122

123

124

125

126

127

128

129

130

131

132

133

134

135

136

137

138

139

140

141

142

143

144

145

146

147

148

149

150

151

152

153

154

155

156

157

158

159

160

161

162

163

164

165

166

167

168

169

170

171

172

173

174

175

176

177

178

179

180

181

182

183

184

185

186

187

188

189

190

191

192

193

194

195

196

197

198

199

200

201

202

203

204

205

206

207

208

209

210

211

212

213

214

215

216

217

218

219

220

221

222

223

224

225

226

227

228

229

230

231

232

233

234

235

236

237

238

239

240

241

242

243

244

245

246

247

248

249

250

251

252

253

254

255

256

257

258

259

260

261

262

263

264

265

266

267

268

269

270

271

272

273

274

275

276

277

278

279

280

281

282

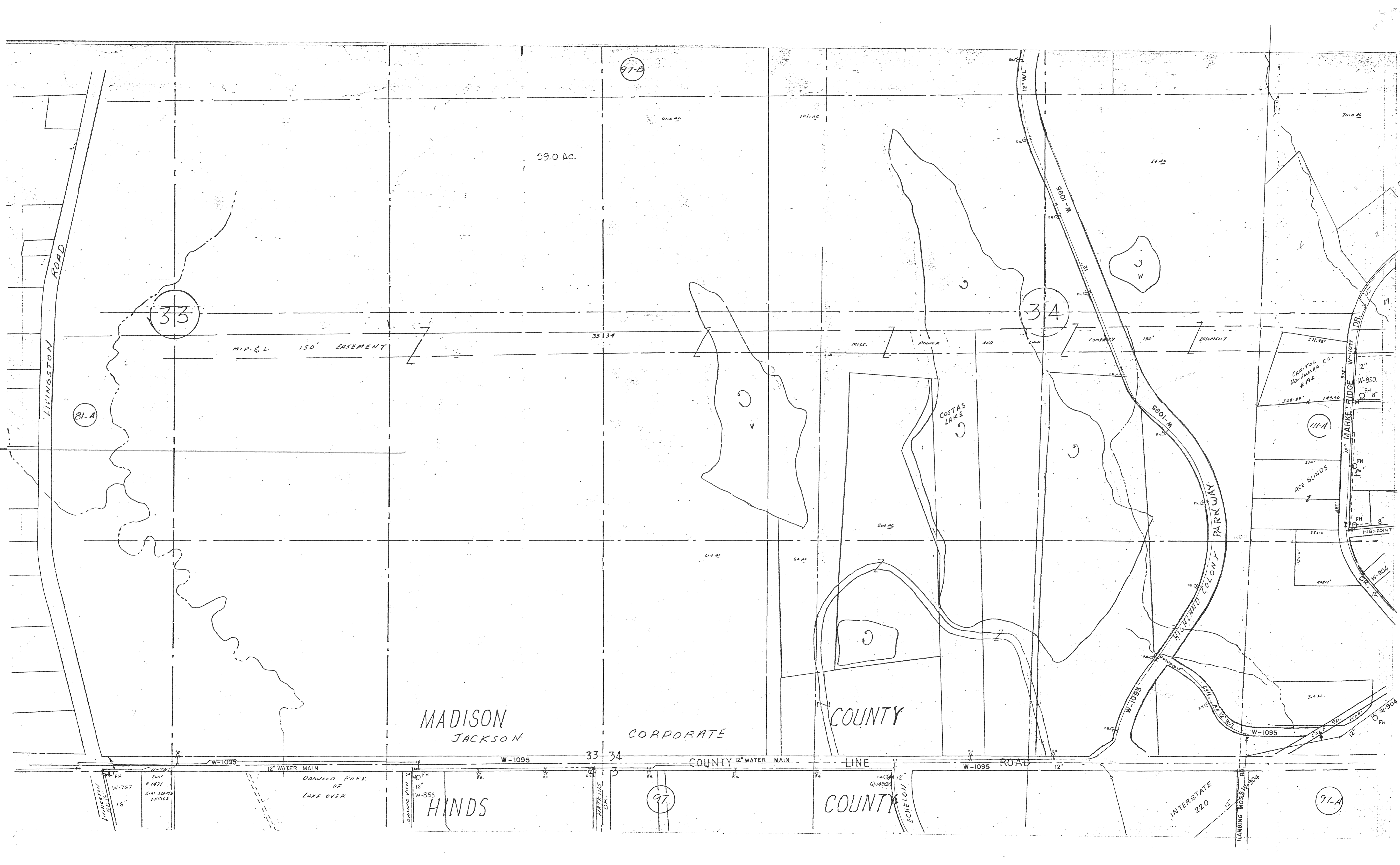
283

284

285

286

28



97-B

59.0 Ac.

33

34

M.P. & L. 150' EASEMENT

33 | 34

MISS. POWER AND LIGHT COMPANY 150' EASEMENT

81-A

111-A

ACE BLINDS

HIGHPOINT

MADISON JACKSON

CORPORATE

COUNTY

HINDS

97

COUNTY

97-A

W-1095

W-1095

33 | 34

COUNTY 12" WATER MAIN

LINE

W-1095

ROAD

INTERSTATE 220

LIVINGSTON ROAD

HIGHLAND COLONY PARKWAY

MARKET RIDGE DR.

CAPITOL HARDWARE CO. #192

DOGWOOD PARK OF LAKE OVER

W-767

W-767

2001 #1471 GIRL SCOUTS OFFICE

W-853

MATKINS DR.

ECHOLON

HANGING MOSS RD

W-904

W-904

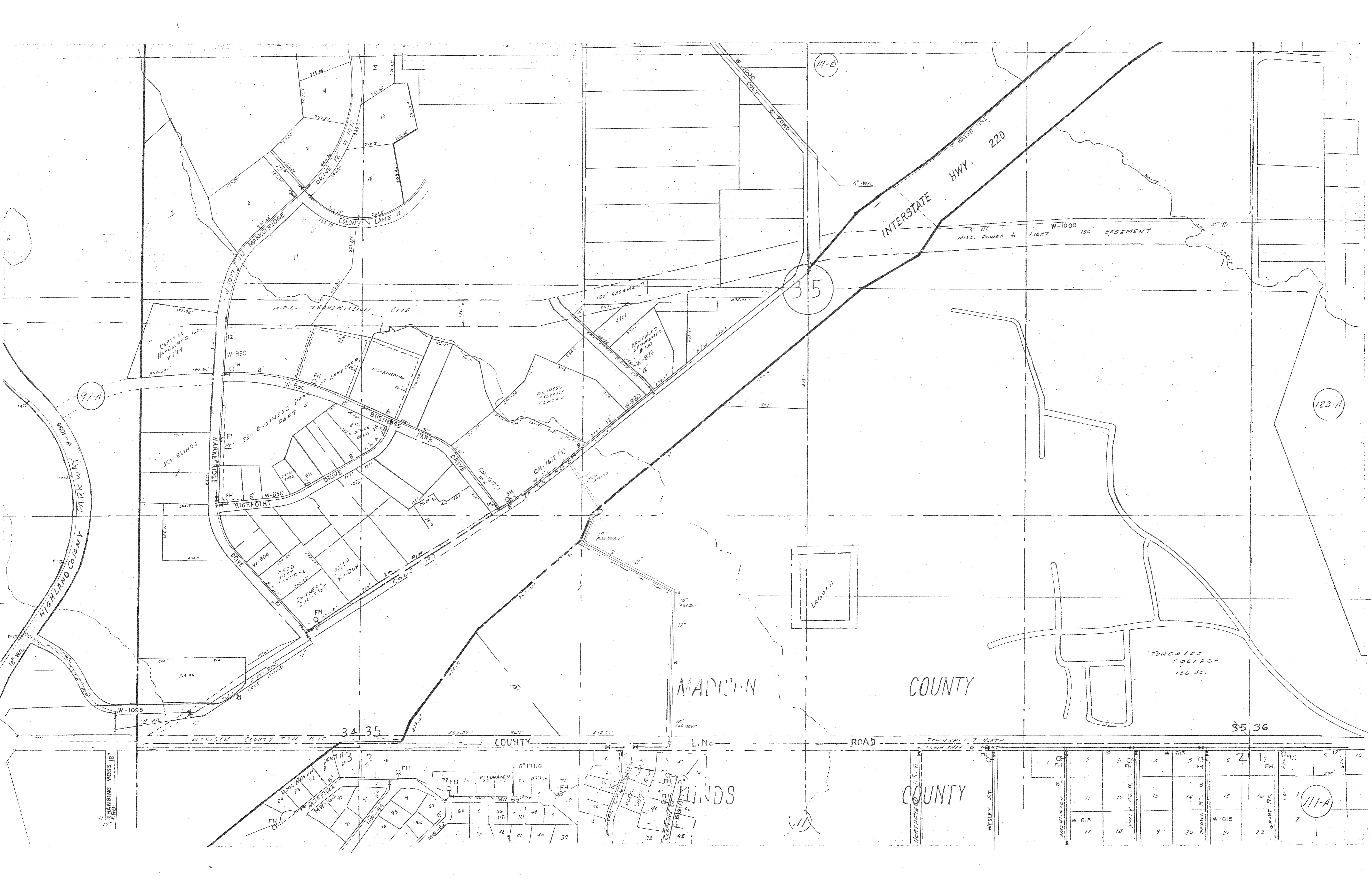
W-904

W-904

W-904

W-904





97-A

111-B

35

123-A

MADISON COUNTY

BLINDS

COUNTY

TOUGALOO COLLEGE  
150 AC.

35, 36

1	2	3	4	5	6	7	8	9	10
11	12	13	14	15	16	17	18	19	20
21	22	23	24	25	26	27	28	29	30

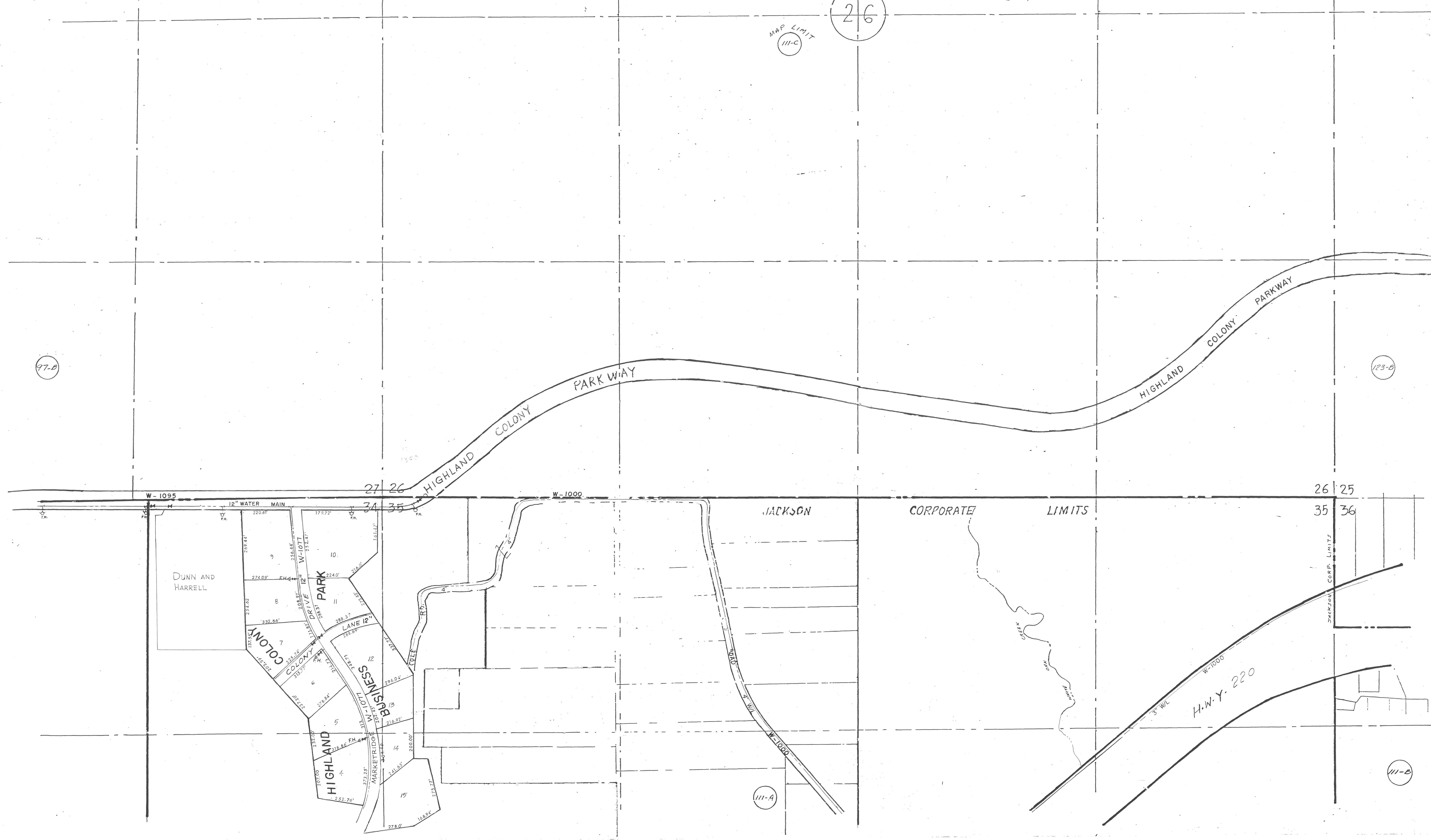
111-A

MAP LIMIT  
111-C

26

97-B

123-B



W-1095

12" WATER MAIN

27 26

W-1000

26 25

35 36

DUNN AND HARRELL

COLONY PARK DRIVE

LANE 12

BUSINESS

HIGHLAND

JACKSON

CORPORATE

LIMITS

JACKSON CORP. LIMITS

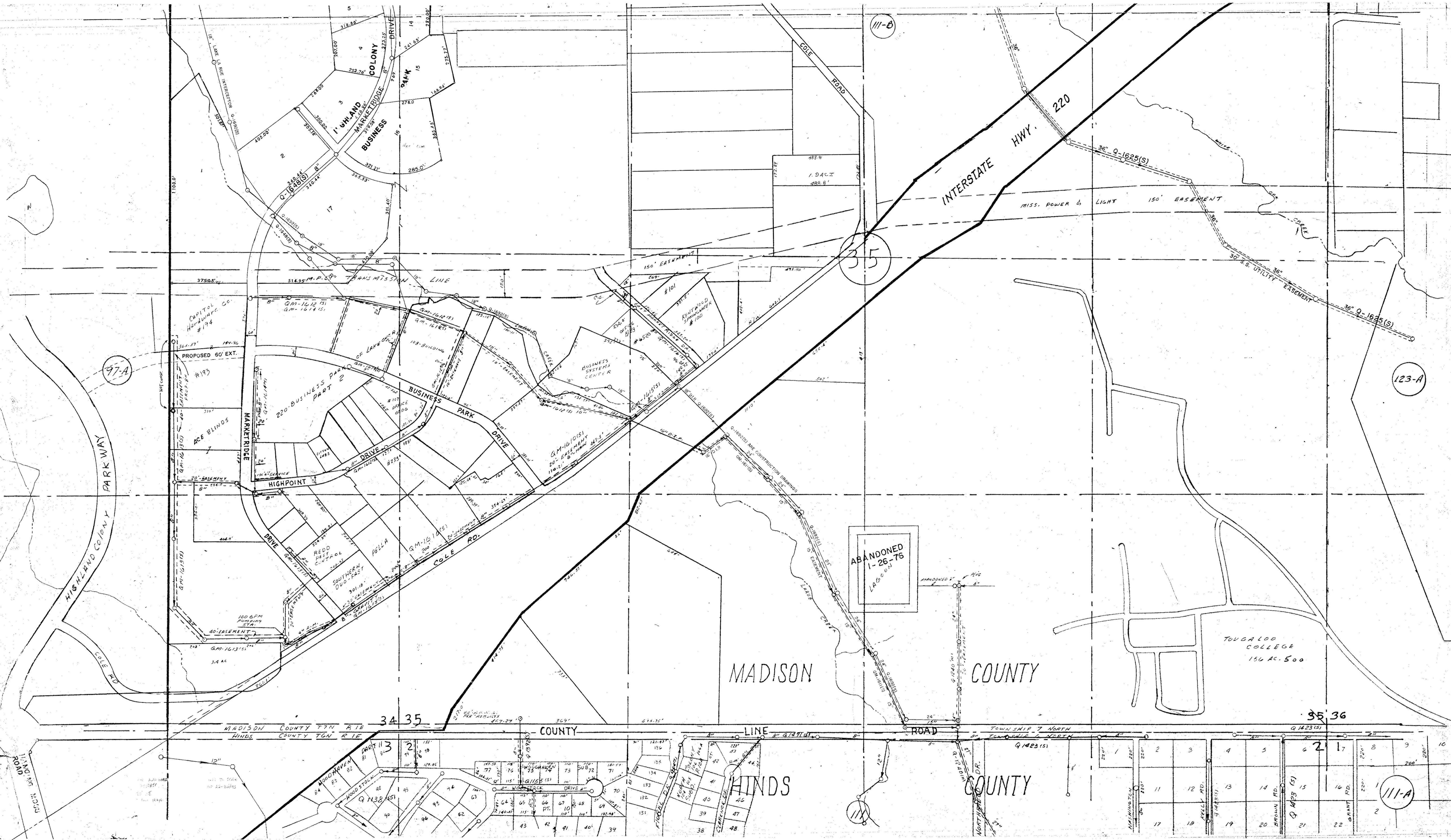
H.W.Y. 220

111-A

111-B







111-B

35

123-A

97-A

ABANDONED  
1-26-76  
LADSON

MADISON

COUNTY

TOUGALOO COLLEGE  
156 AC. 500

34 35

35 36

MADISON COUNTY T7N R1E  
HINDS COUNTY T6N R1E

COUNTY

LINE

ROAD

TOWNSHIP 7 NORTH  
RANGE 1 WEST

HINDS

COUNTY

111-A



26

MAP LIMIT  
III-C

97-B

123-B

PARKWAY

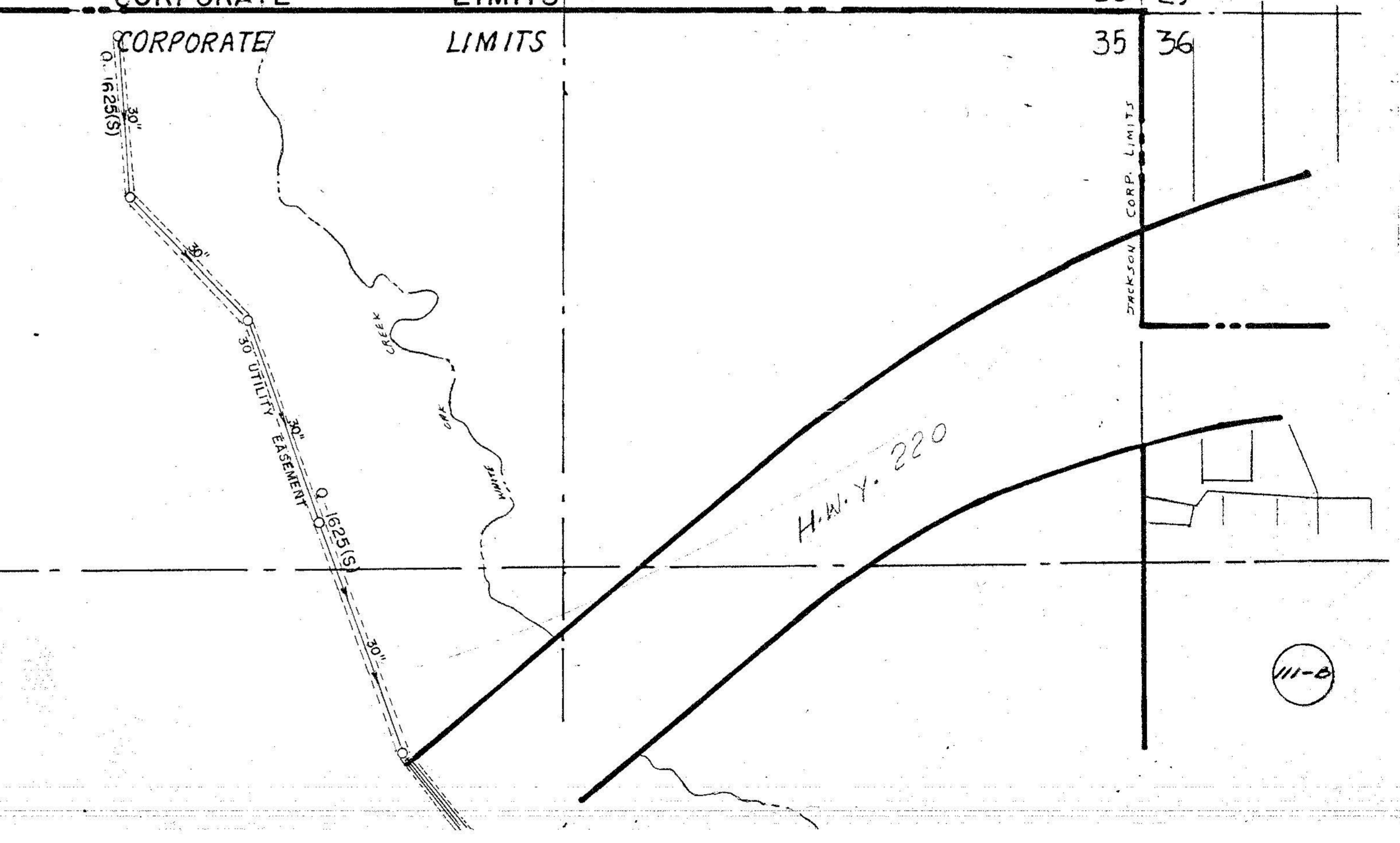
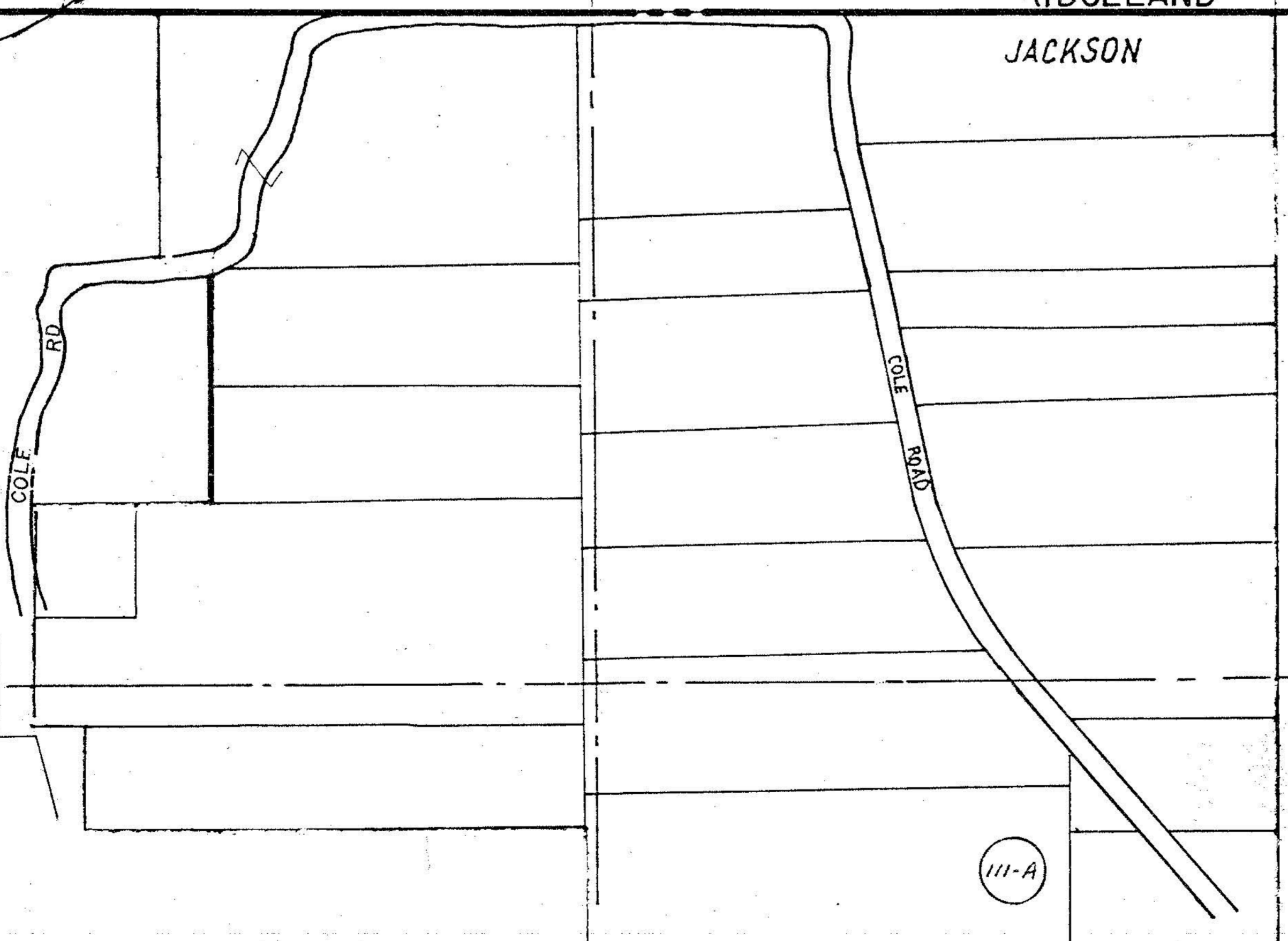
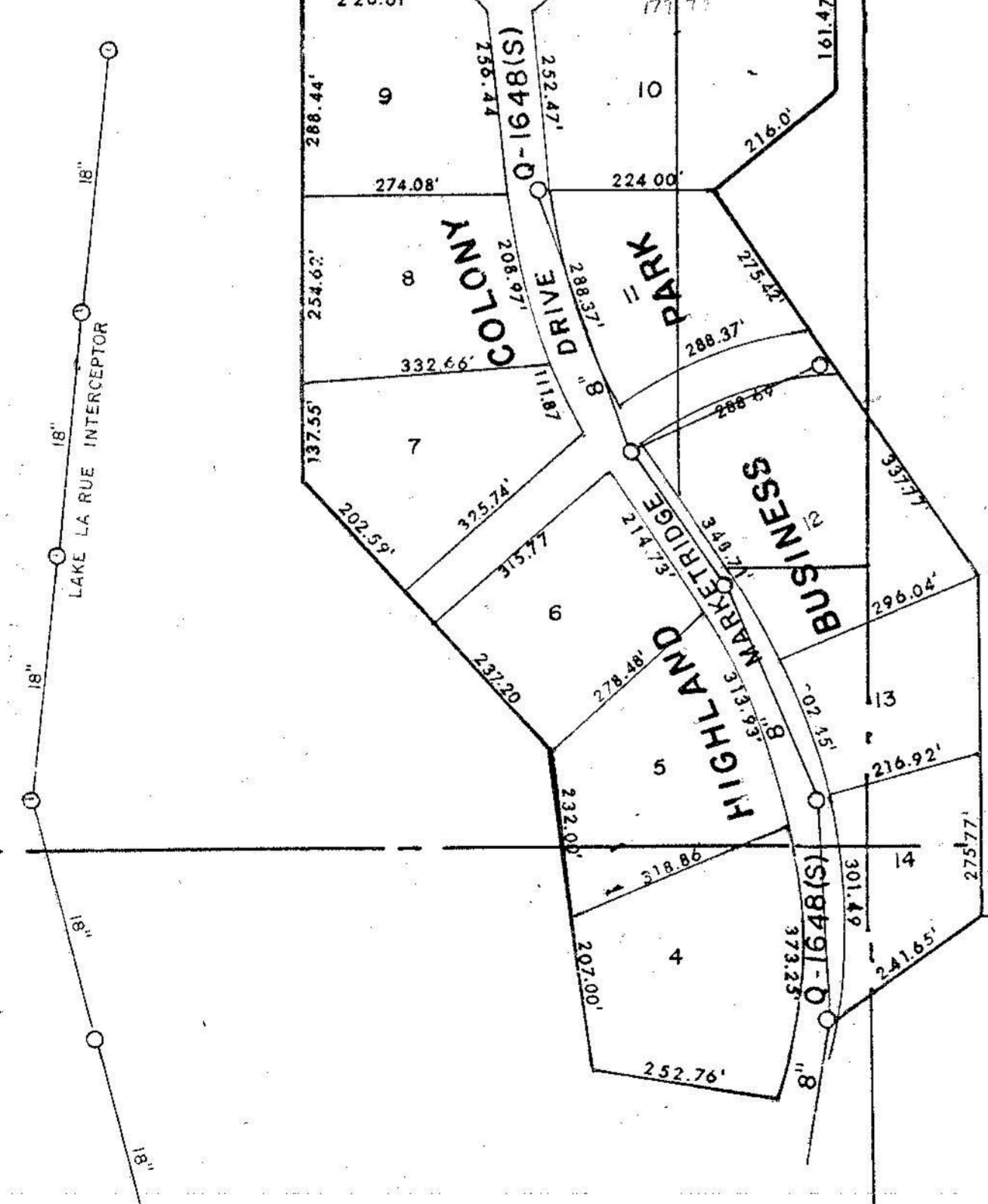
27 26

RIDGELAND  
JACKSON

CORPORATE  
CORPORATE  
LIMITS  
LIMITS

26 25  
35 36

HIGHLAND COLONY 34 35



III-A

III-B