

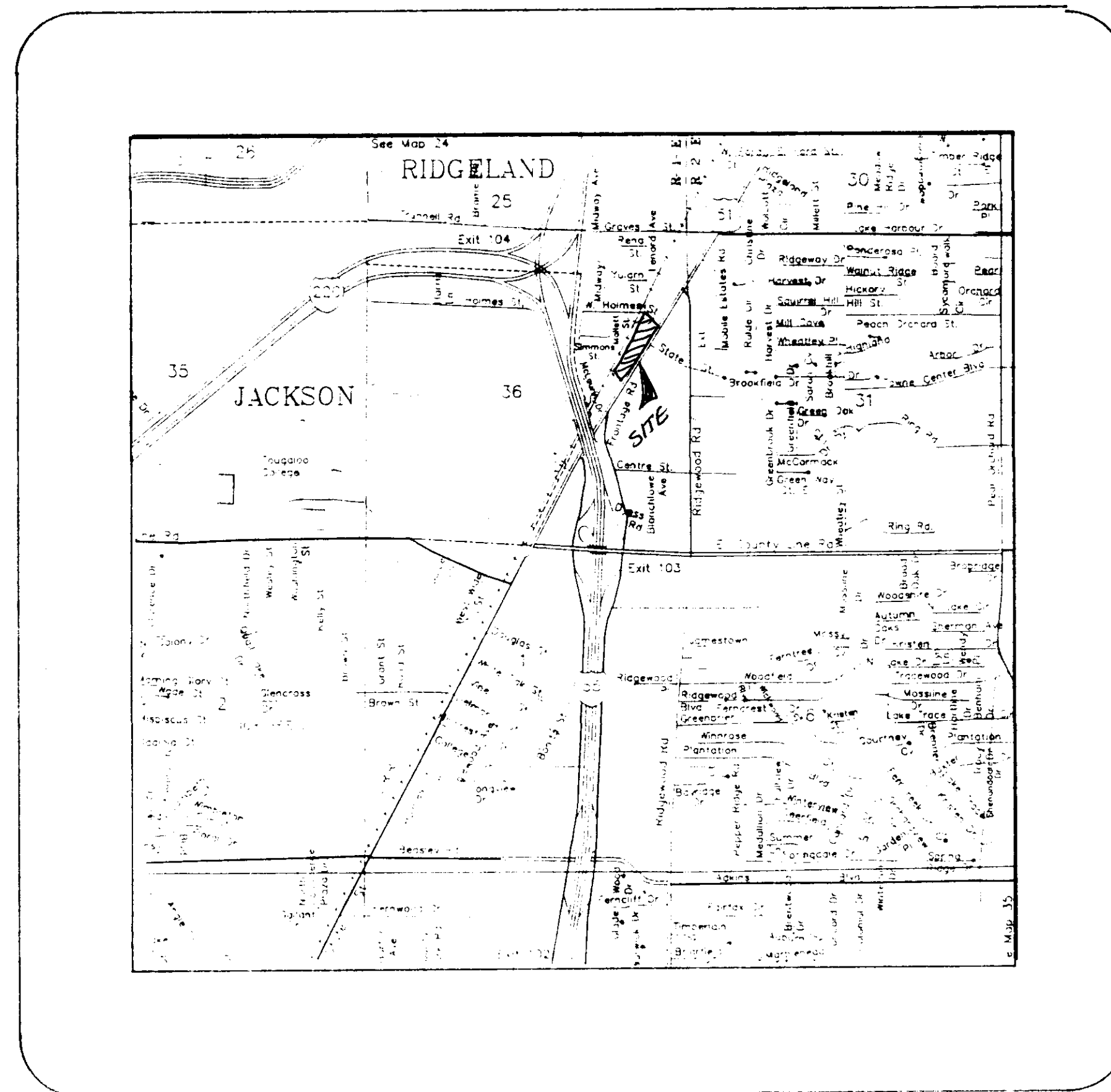
# UTILITY EXTENSIONS CITY OF RIDGELAND, MISSISSIPPI

DEVELOPER:

T.E. GUILLOT  
P.O. BOX 1336  
MADISON, MISSISSIPPI 39130

ENGINEER:

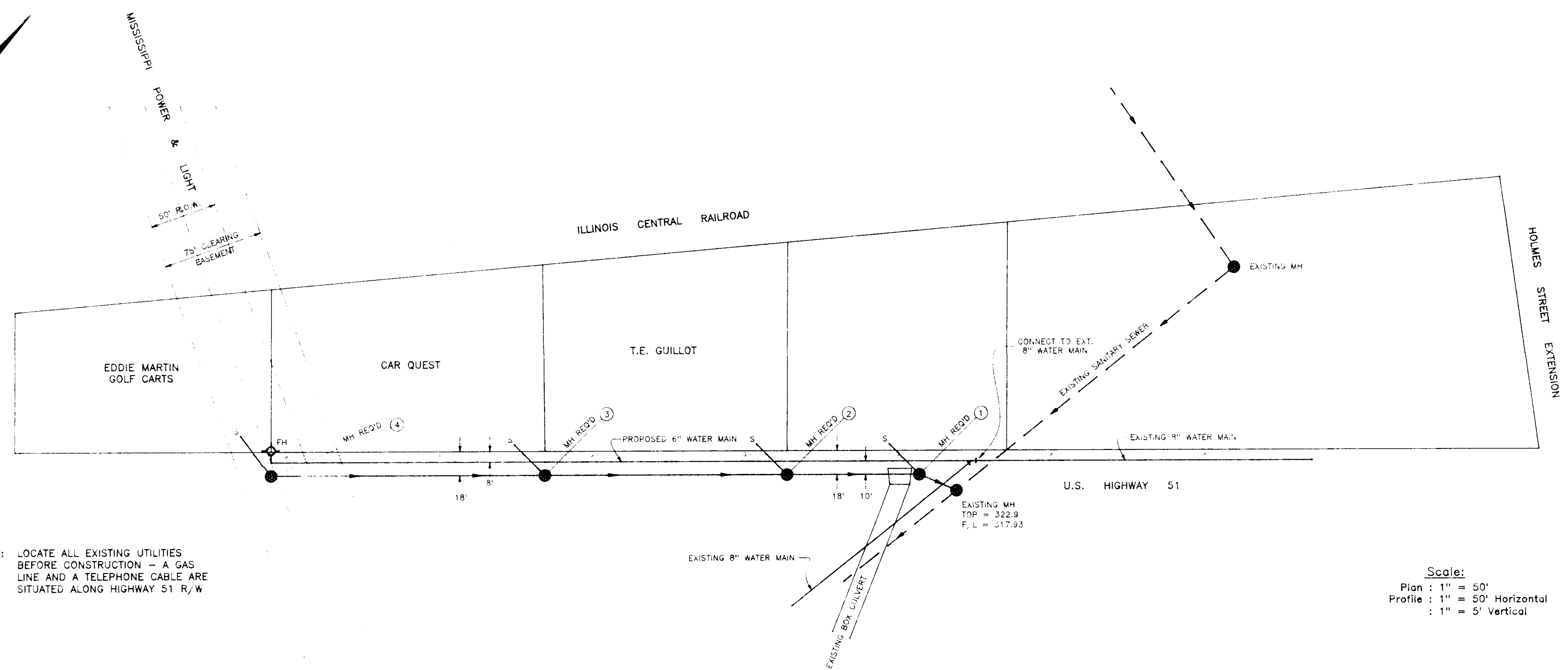
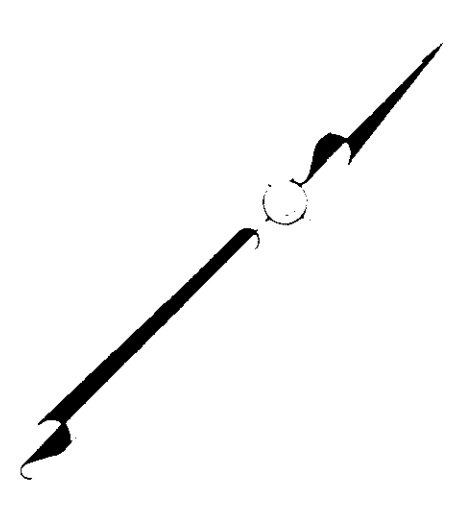
CENTRAL MISSISSIPPI ENGINEERING, INC.  
644 LAKELAND EAST DR. - SUITE "A"  
FLOWOOD, MISSISSIPPI 39208



INDEX

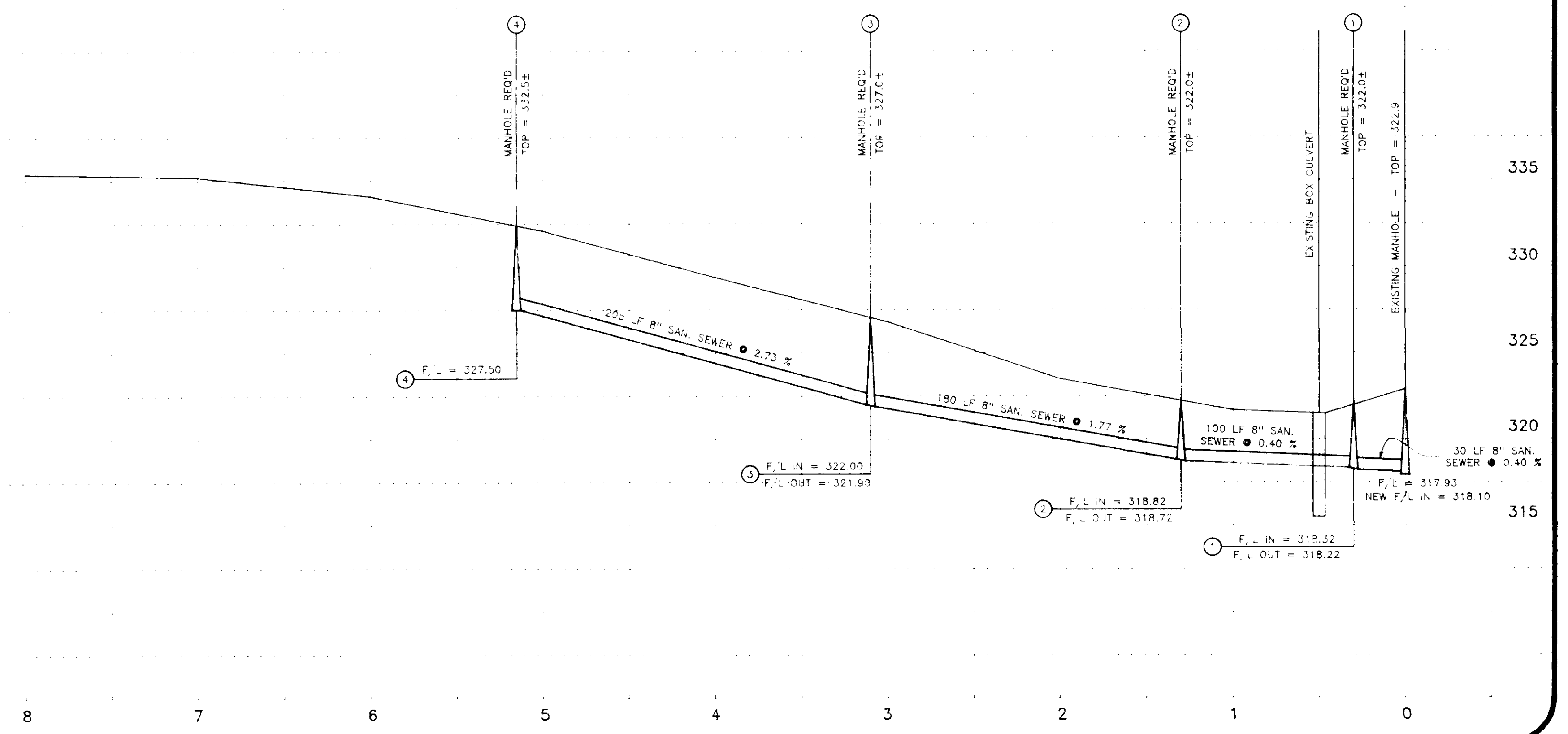
1	COVER SHEET
2	PLAN - PROFILE UTILITIES
3	STANDARD SEWER DETAILS
4	STANDARD WATER DETAILS

PWP 05011  
~~03002~~



NOTE: LOCATE ALL EXISTING UTILITIES BEFORE CONSTRUCTION - A GAS LINE AND A TELEPHONE CABLE ARE SITUATED ALONG HIGHWAY 51 R/W

Scale:  
 Plan : 1" = 50'  
 Profile : 1" = 50' Horizontal  
           : 1" = 5' Vertical



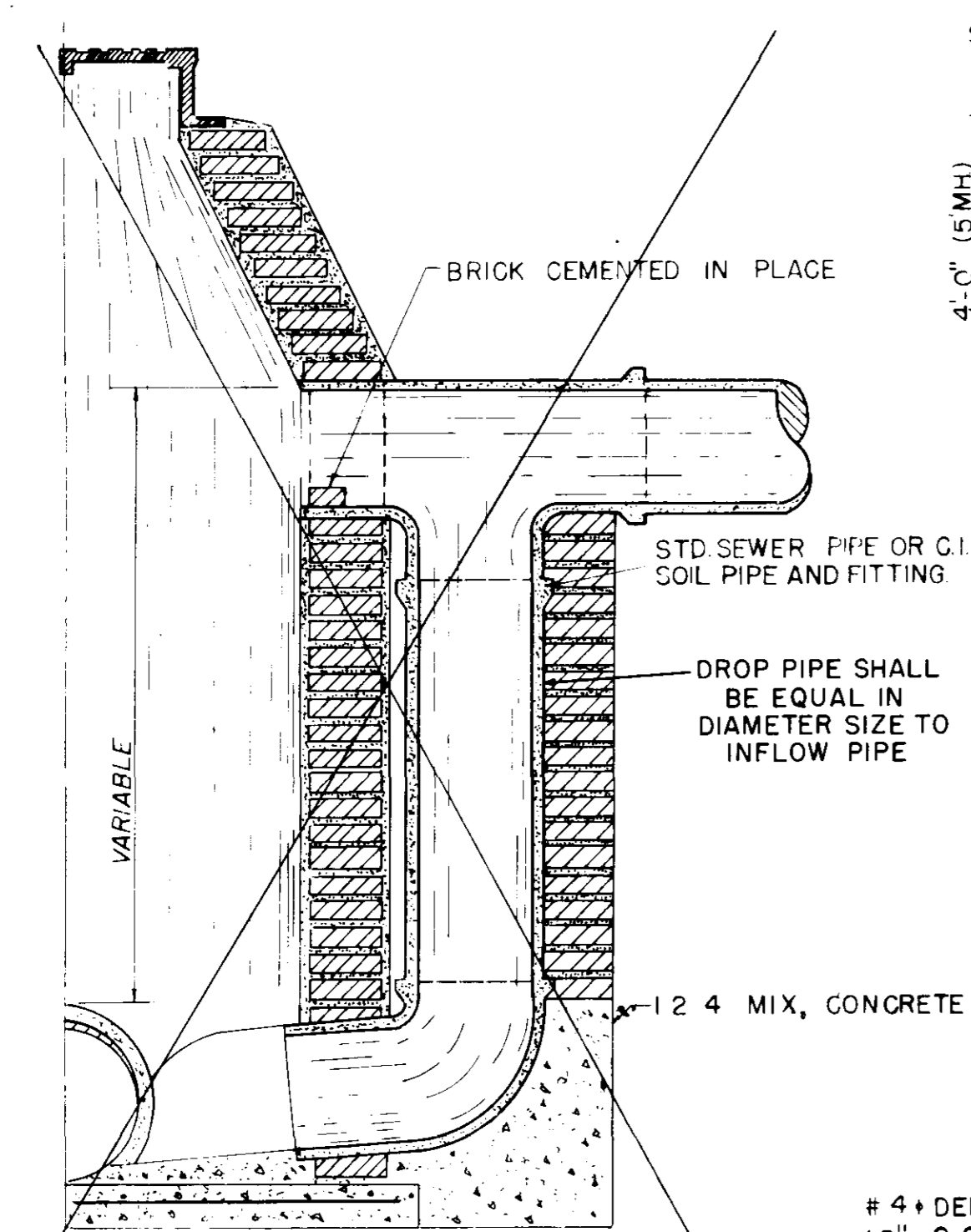
Central Mississippi Engineering

644 Lakeland East Dr. Flowood, Mississippi 39208

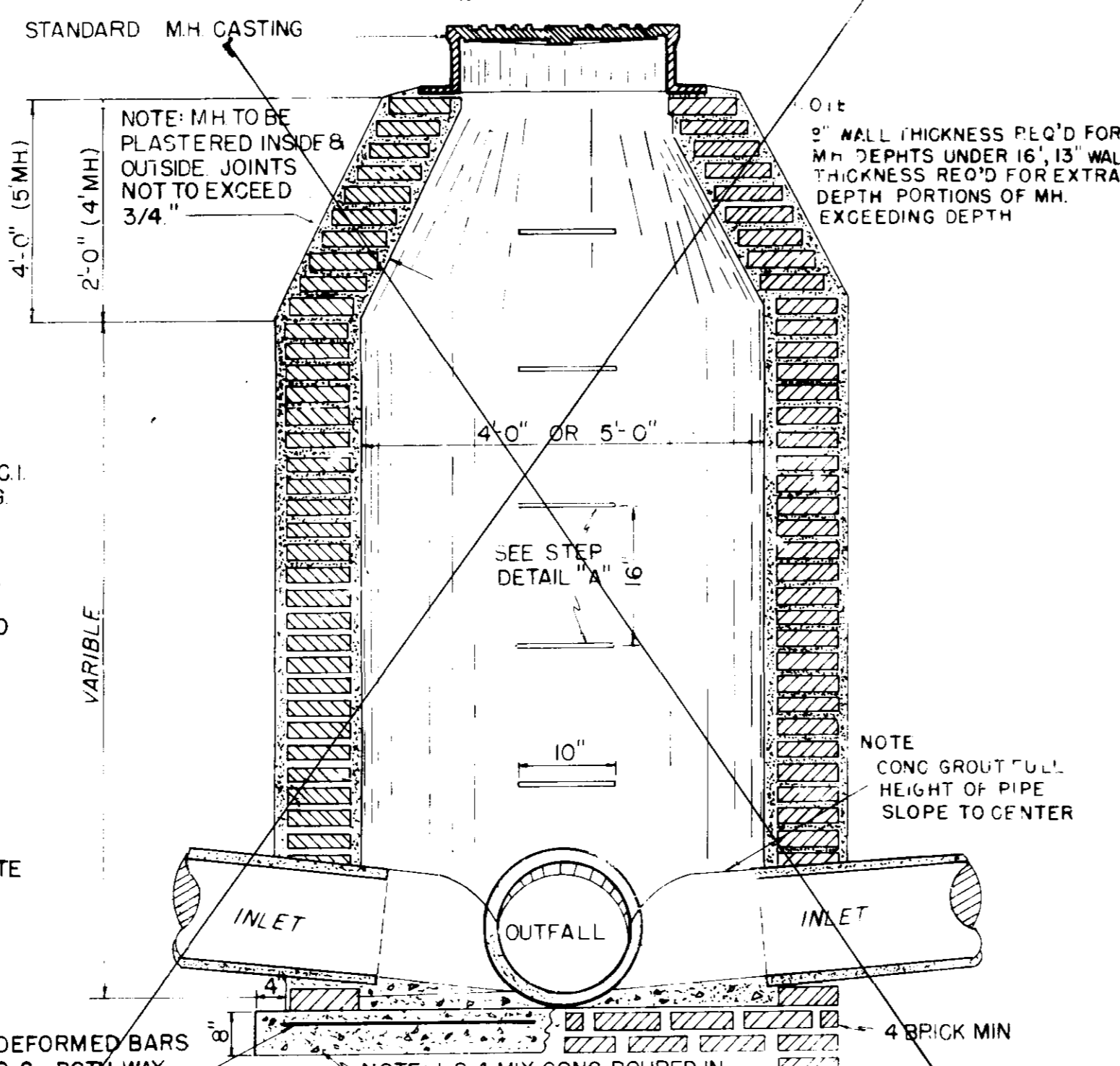
Utility Extensions  
 City of Ridgeland  
 T.E. Guillot

Checked by: [Signature]  
 Drawn by: [Signature]  
 Date: [Date]

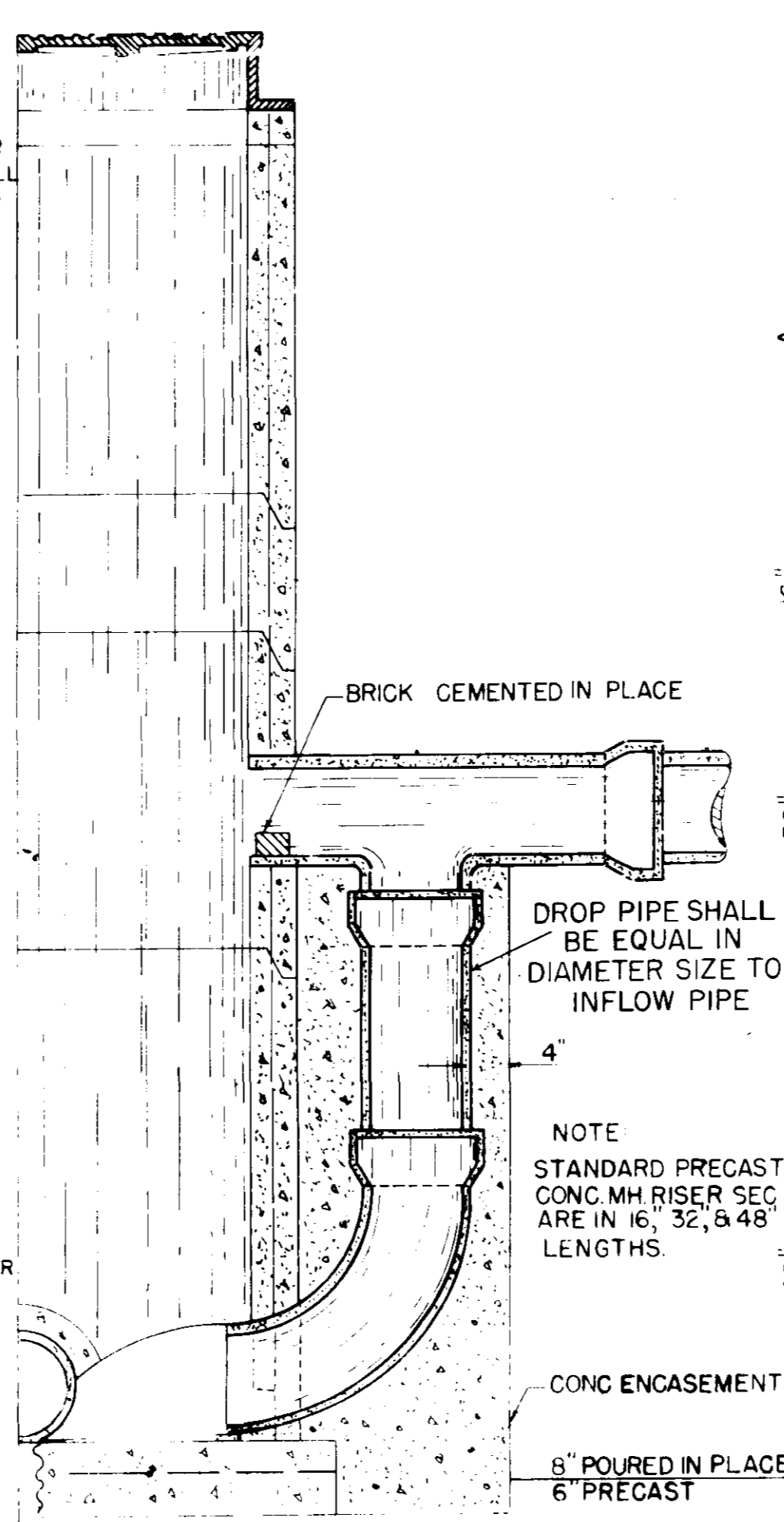
2



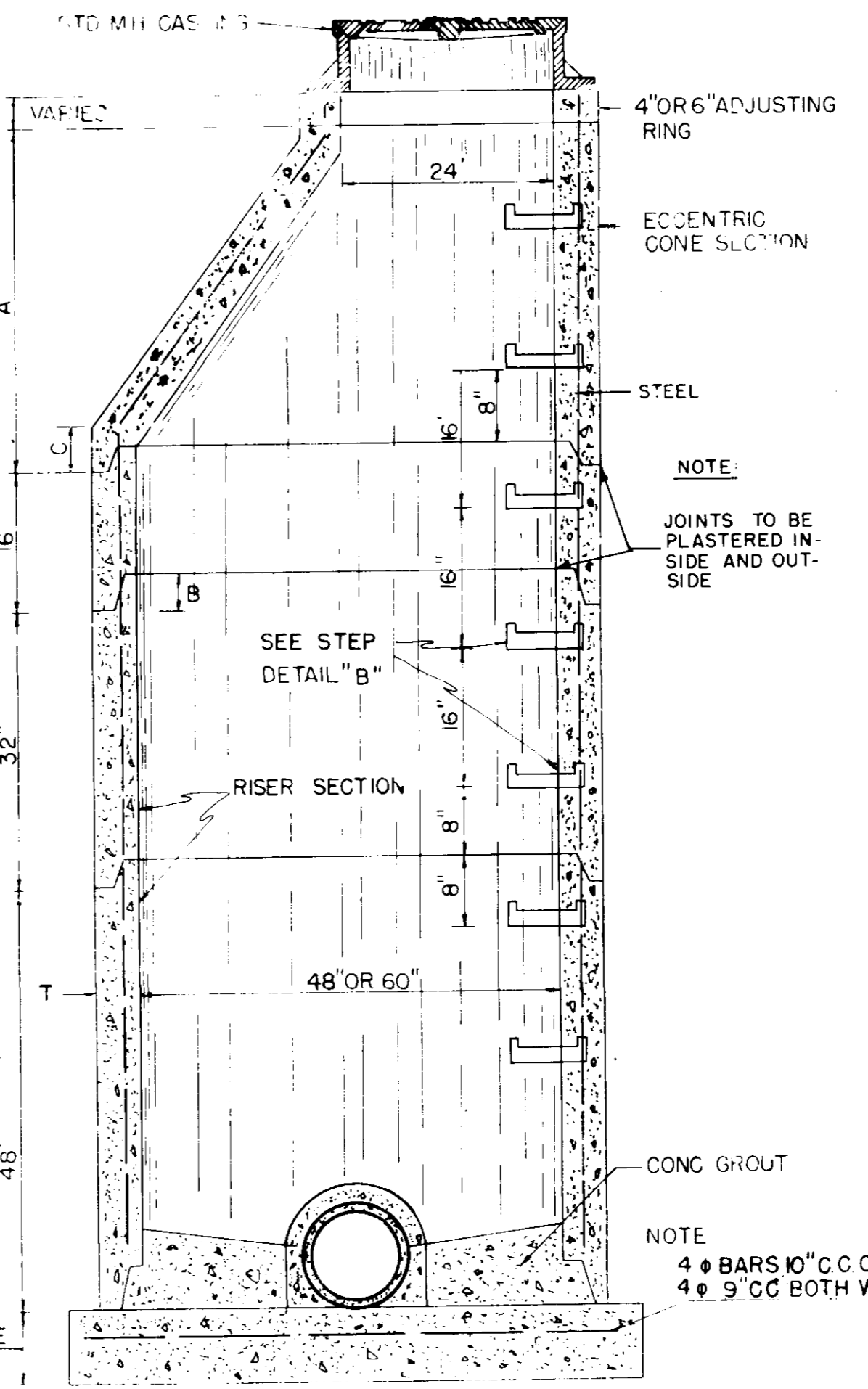
**SECTION BRICK MANHOLE WITH DROP CONNECTION**  
OMIT



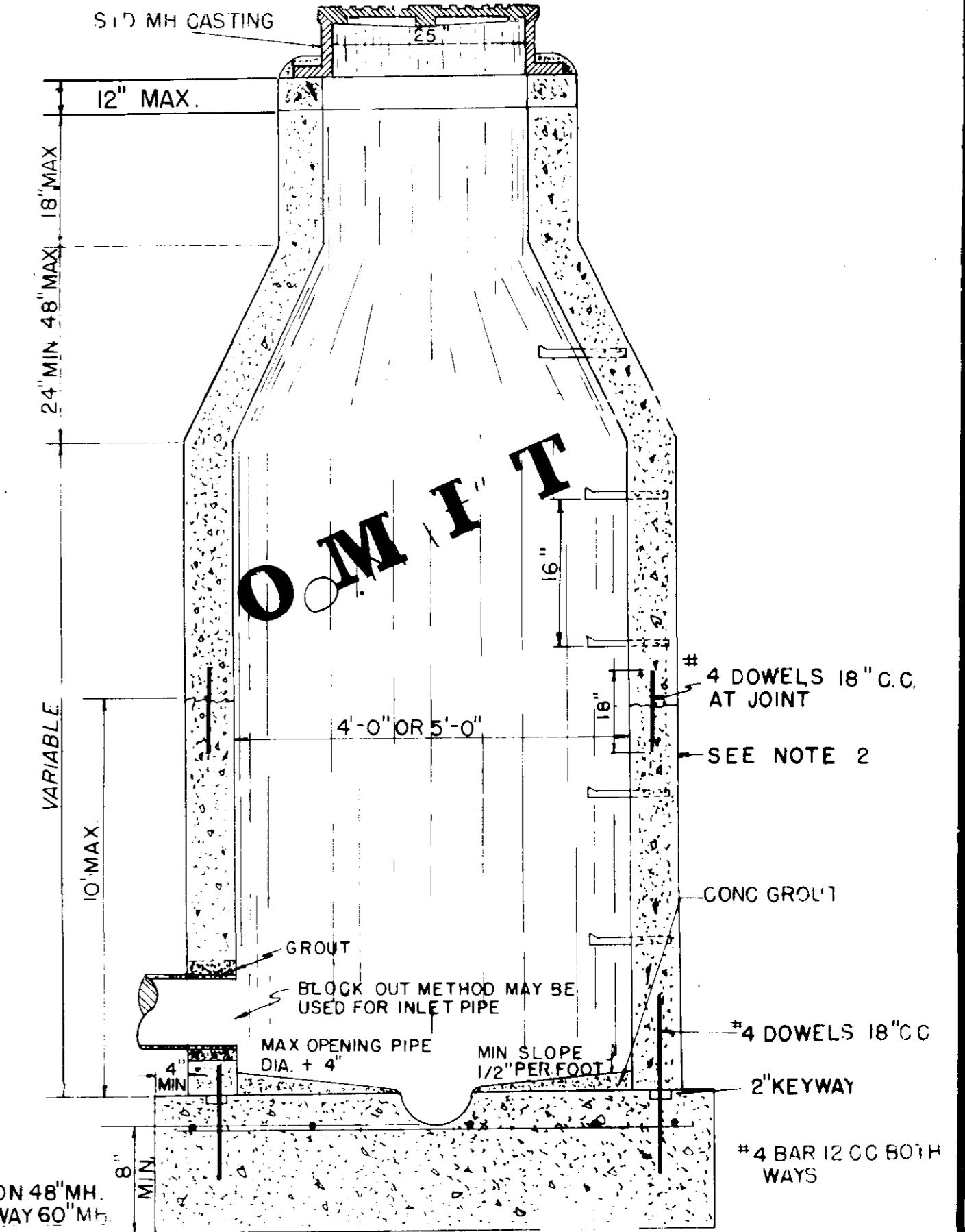
**SECTION BRICK MANHOLE**  
OMIT



**SECTION OF PRECAST CONCRETE MANHOLE WITH DROP CONN.**

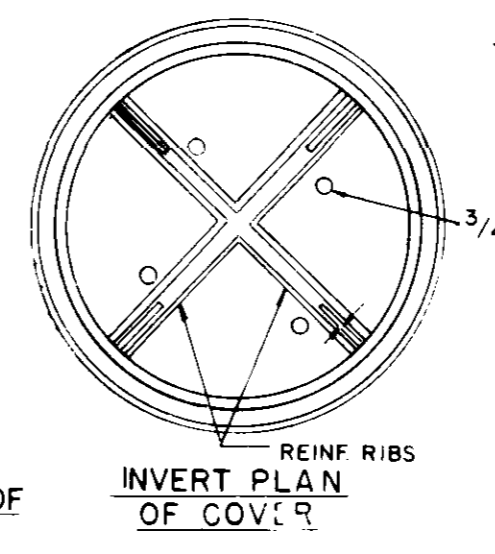
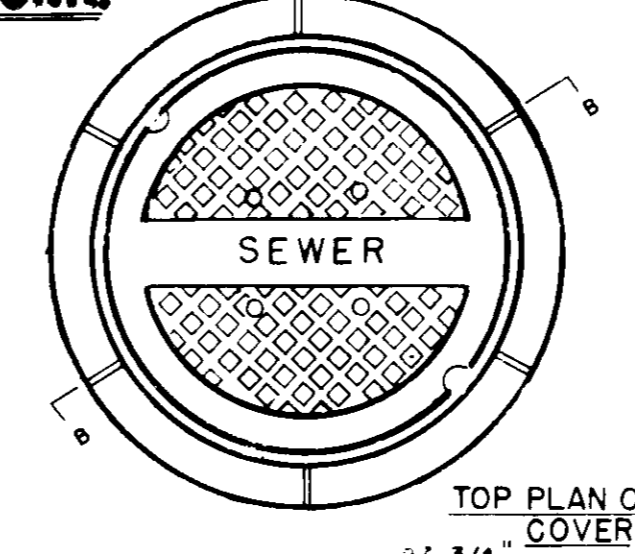
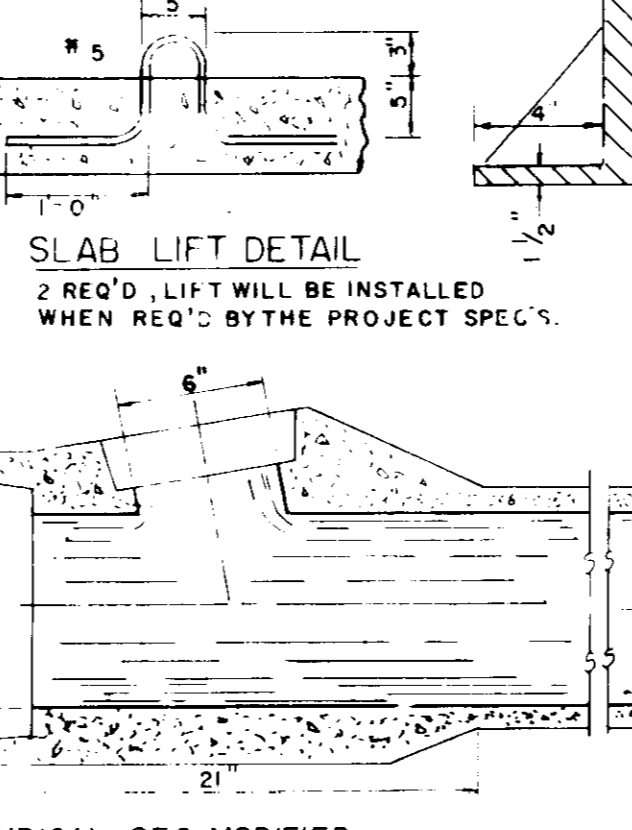
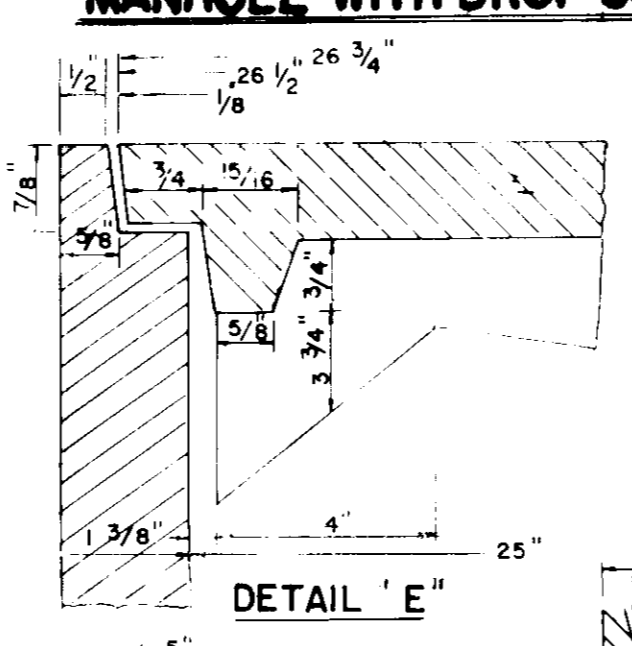
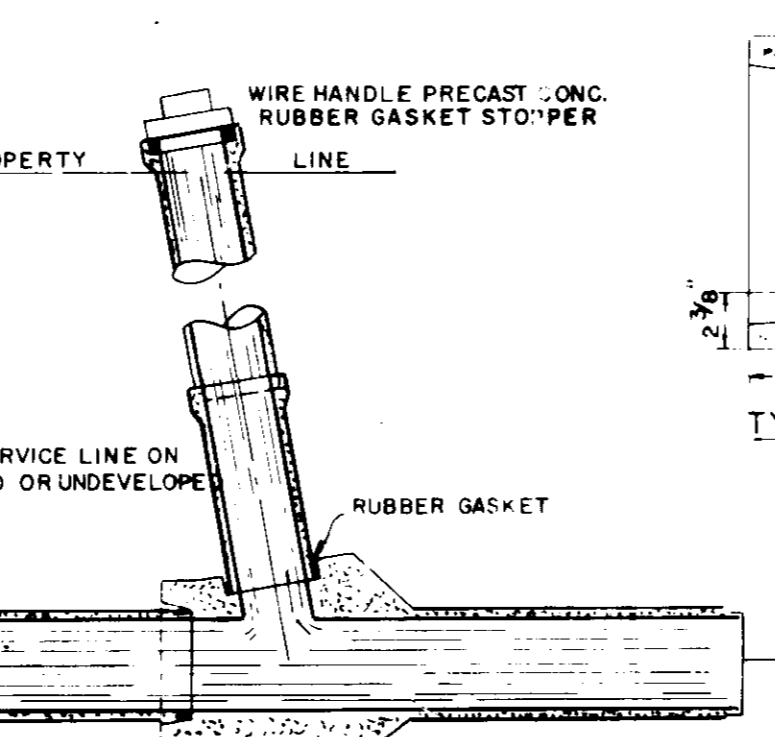
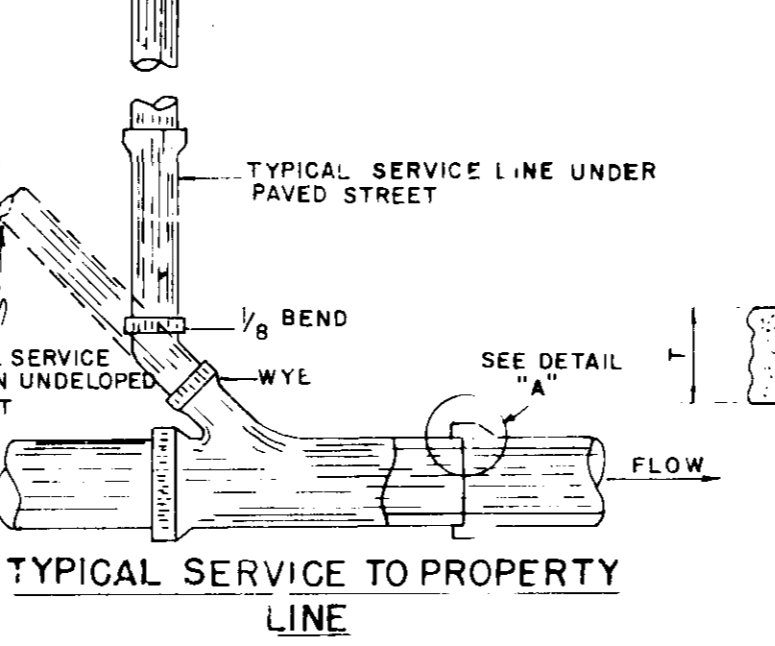
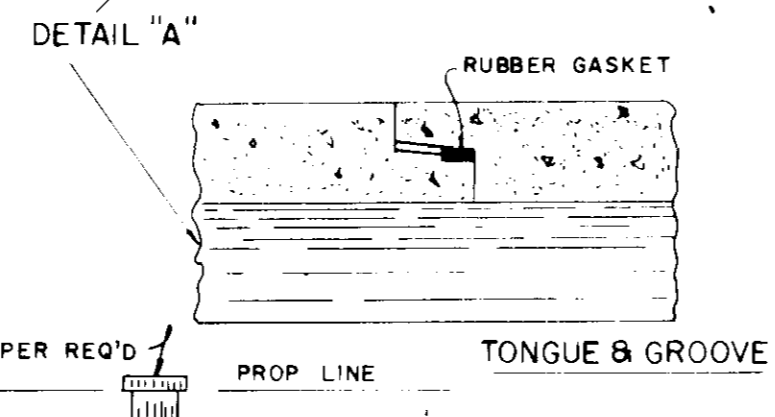
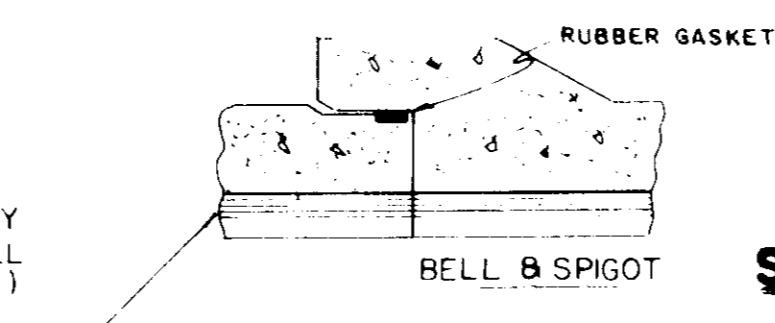


**SECTION OF PRECAST CONCRETE MANHOLE**

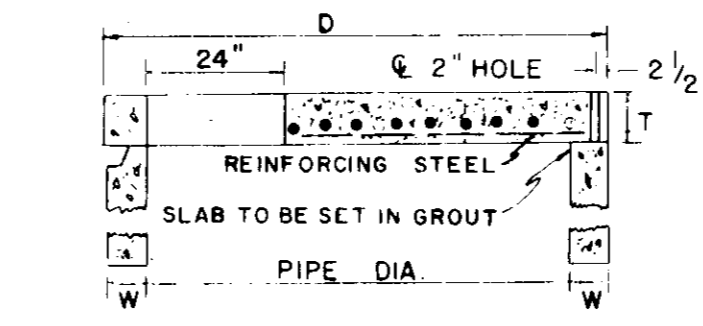


**CAST-IN-PLACE MANHOLE WITH PREPOURED BASE**

NOTE: BASE SHALL BE CAST MONOLITHALLY WITH THE REST OF THE MANHOLE ALL CONC SHALL BE 3000 PSI (CLASS B)

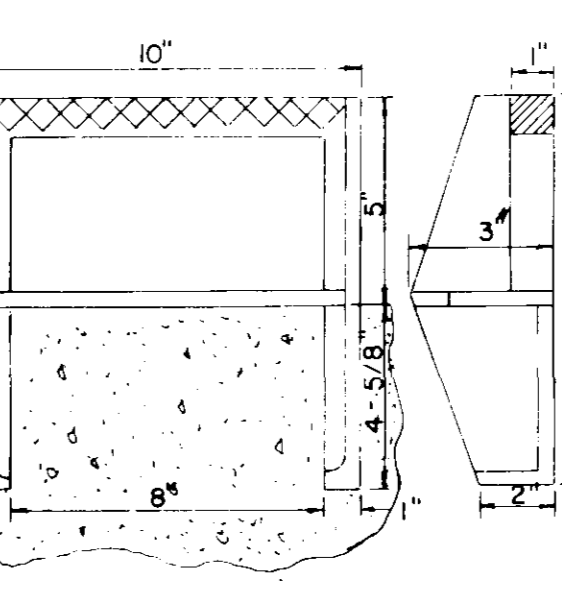
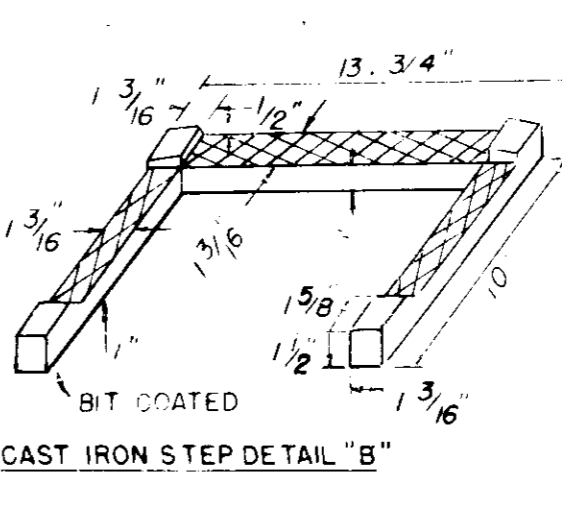
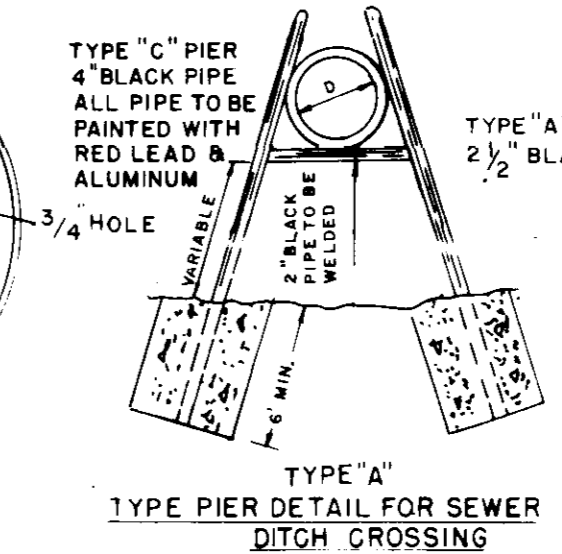


**STD. M.H. CASTING**

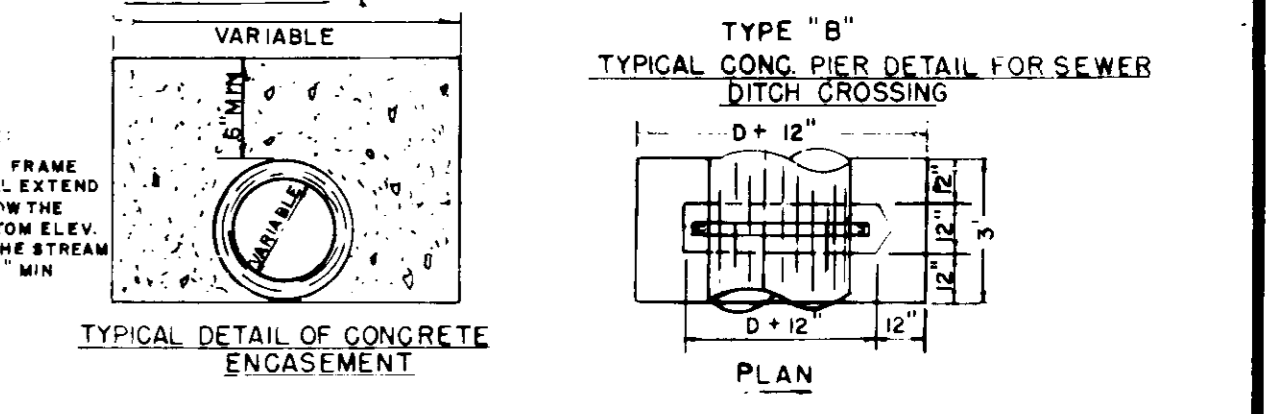
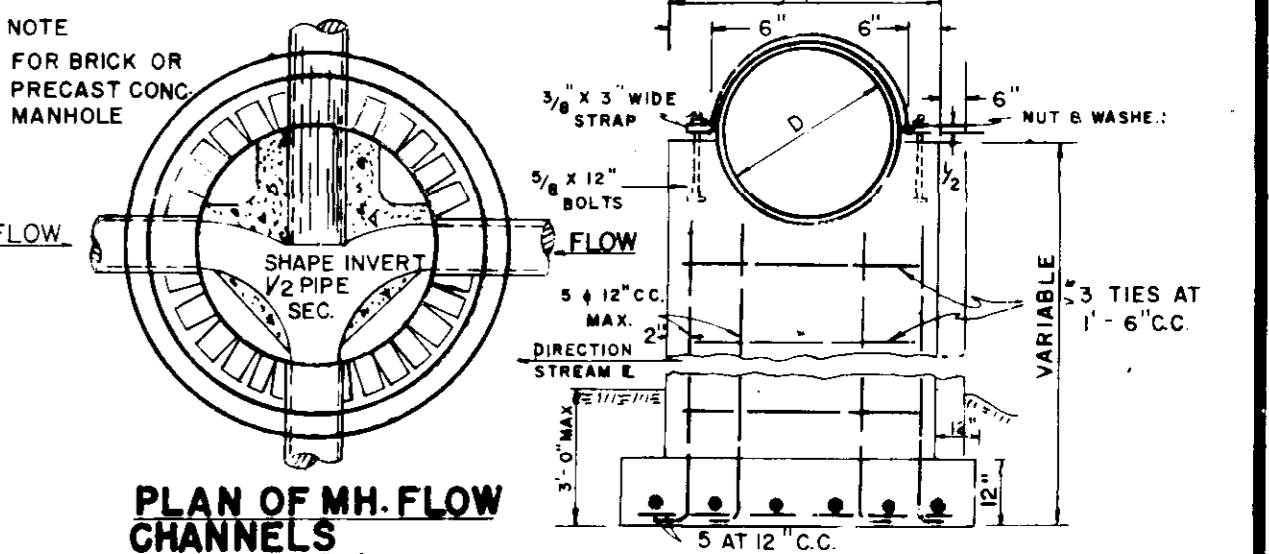


PIPE DIA.	W	D	T	EST. WT.
48"	5"	58"	6"	1,145 LBS.
54"	5 1/2"	65"	8"	1,990 LBS.
60"	6"	72"	8"	2,515
65"	6 1/2"	79"	8"	3,090
72"	7"	86"	8"	3,720
84"	8"	100"	8"	5,140
96"	9"	114"	8"	6,775
108"	9"	126"	8"	8,345

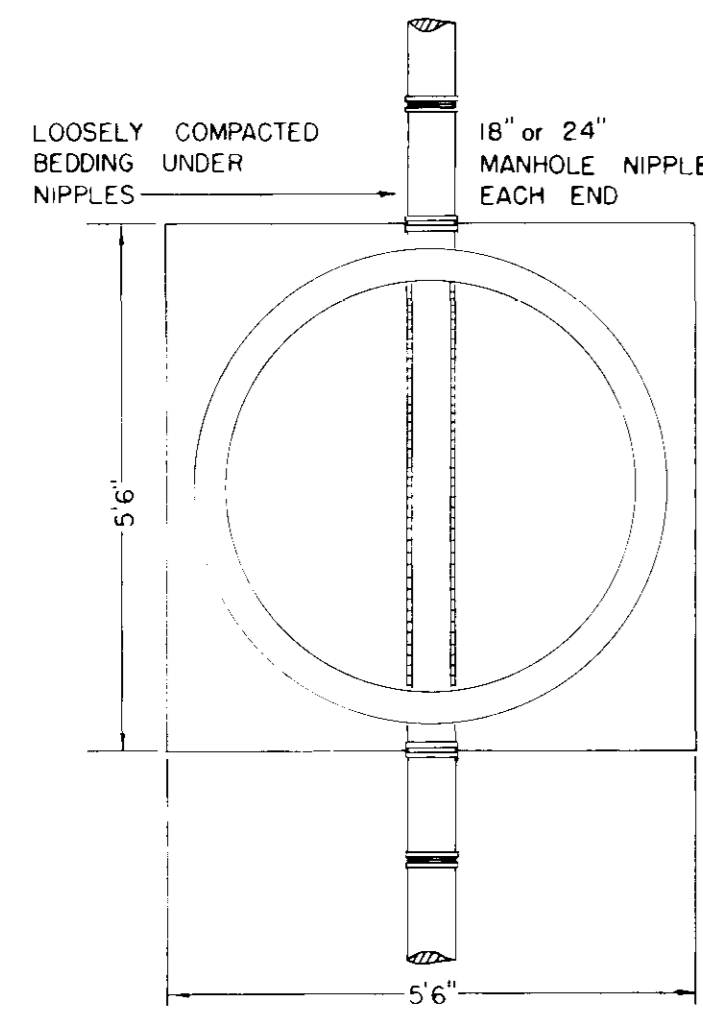
**FLAT SLAB MANHOLE TOP**



**STEP DETAIL 'A'**



**GENERAL NOTES**  
WHERE SOIL AT THE ELEVATION OF THE BASE OF A MANHOLE IS UNSUITABLE THE THICKNESS AND/OR BASE WILL BE INCREASED AS DIRECTED BY THE ENGINEER  
PIPE JOINTS FORMED BY JUTE AND HOT POURED BITUMINOUS COMPOUND ARE NOT PERMISSIBLE  
JOINTS PROMED BY RUBBER GASKET PLUS REFINED PLASTIC CEMENT COMPOUND WILL BE REQUIRED.



**TYPICAL PIPE CONNECTION TO MANHOLE**

- NOTE:
- DO NOT POUR ADDITIONAL CONCRETE ON OR BEYOND M.H. NIPPLE.
  - USE A MINIMUM OF 1 NIPPLE AT EACH ENTRANCE TO M.H.
  - PIPE OPENING IN PRE-CAST CONCRETE UNITS SHALL BE EQUAL TO O.D. OF PIPE PLUS 6" MAXIMUM.
  - DO NOT USE BRICK, BLOCK OR TIMBER TO SUPPORT PIPE OR NIPPLES OUTSIDE OF MANHOLE.

**SECTION OF PRECAST CONCRETE MANHOLE**

DIA.	A	B	C	T	APPROX. CONC. WEIGHT, LBS.	APPROX. REQ'D WRM. 185°F/FT.
48"	38"	3 1/2"	5"	5"	2075	870
60"	36"	5"	9"	6"	3455	1250

**SANITARY SEWER MANHOLE & APPURTENANCE FOR 6" TO 42" SEWER**

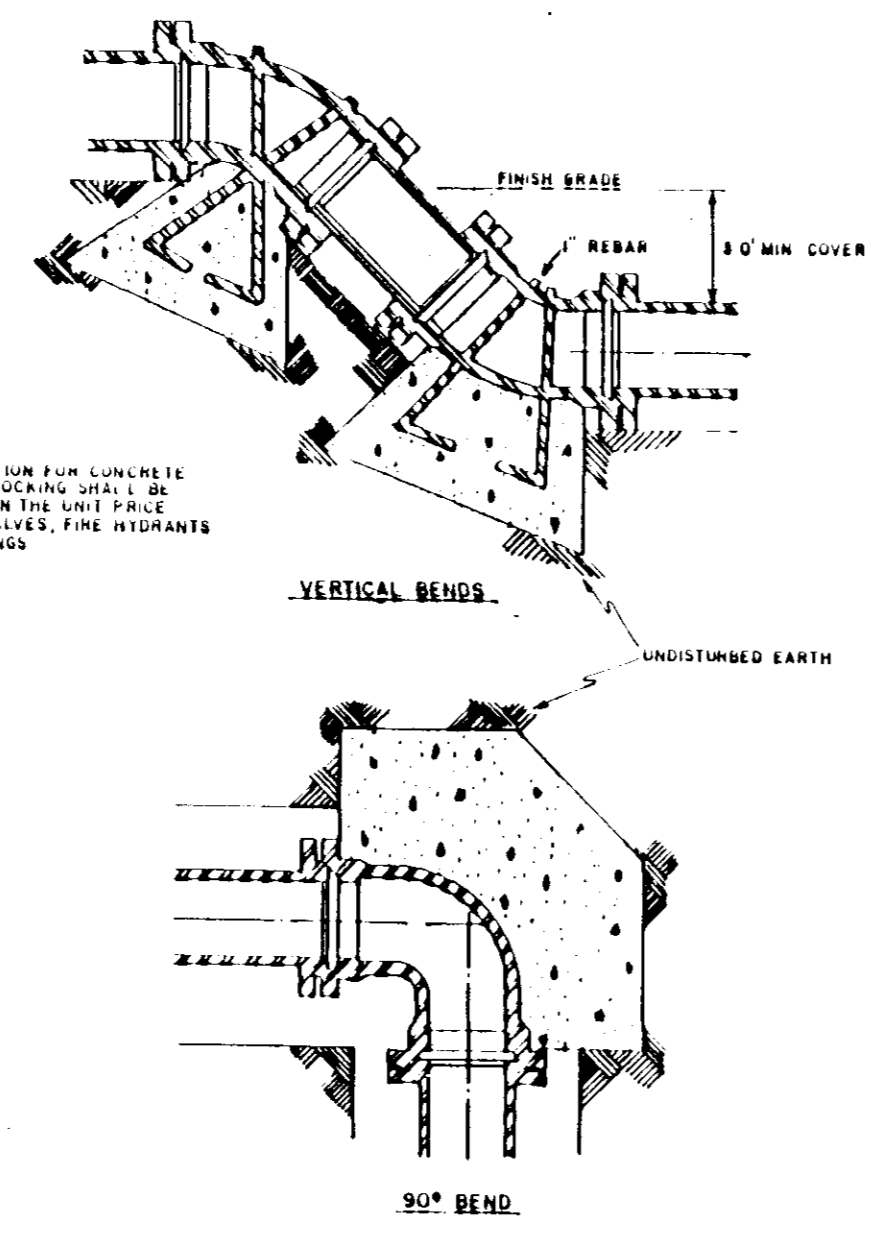
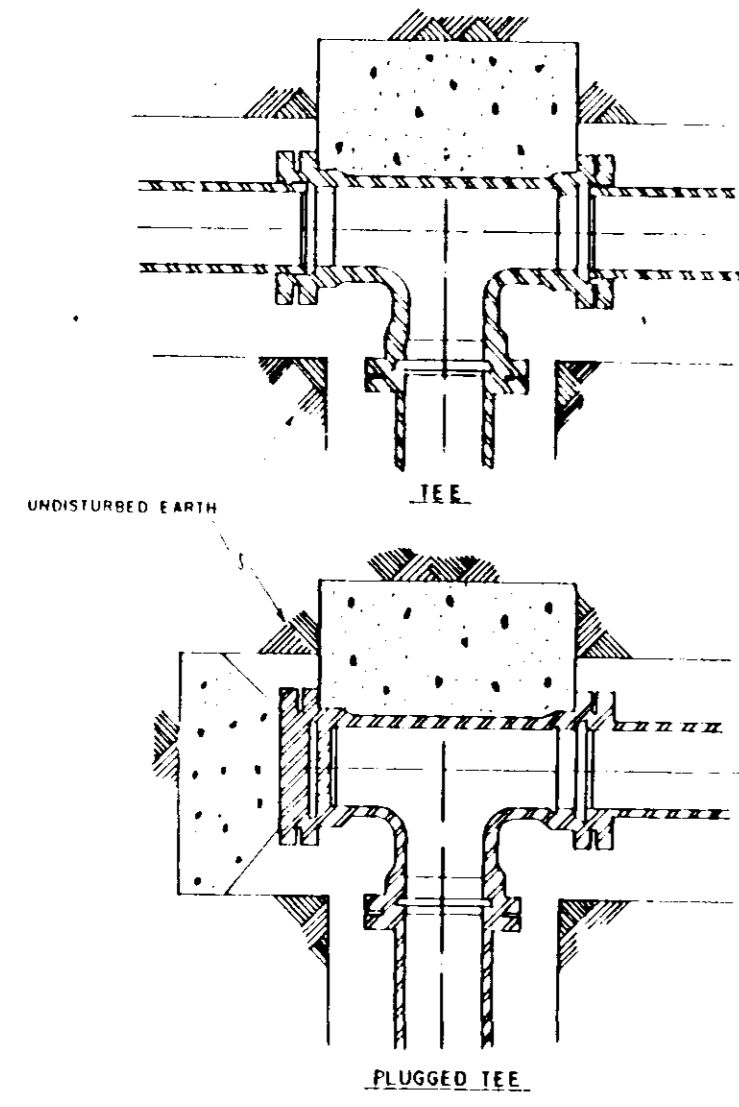
APPROVED 5-1-68 CITY ENGINEER

DATE NOV 5 1968

REVISIONS

BY M.C.

STD. NO. 1-138-A (S)



NOTE: COMPRESSIVE STRENGTH FOR CONCRETE THURST & GROUTING SHALL BE INCLUDED IN THE UNIT PRICE BID FOR ALL LINES, FIRE HYDRANTS AND FITTINGS

TYPICAL BLOCKING ON WATER MAIN (3500 PSI CONCRETE PRECAST)

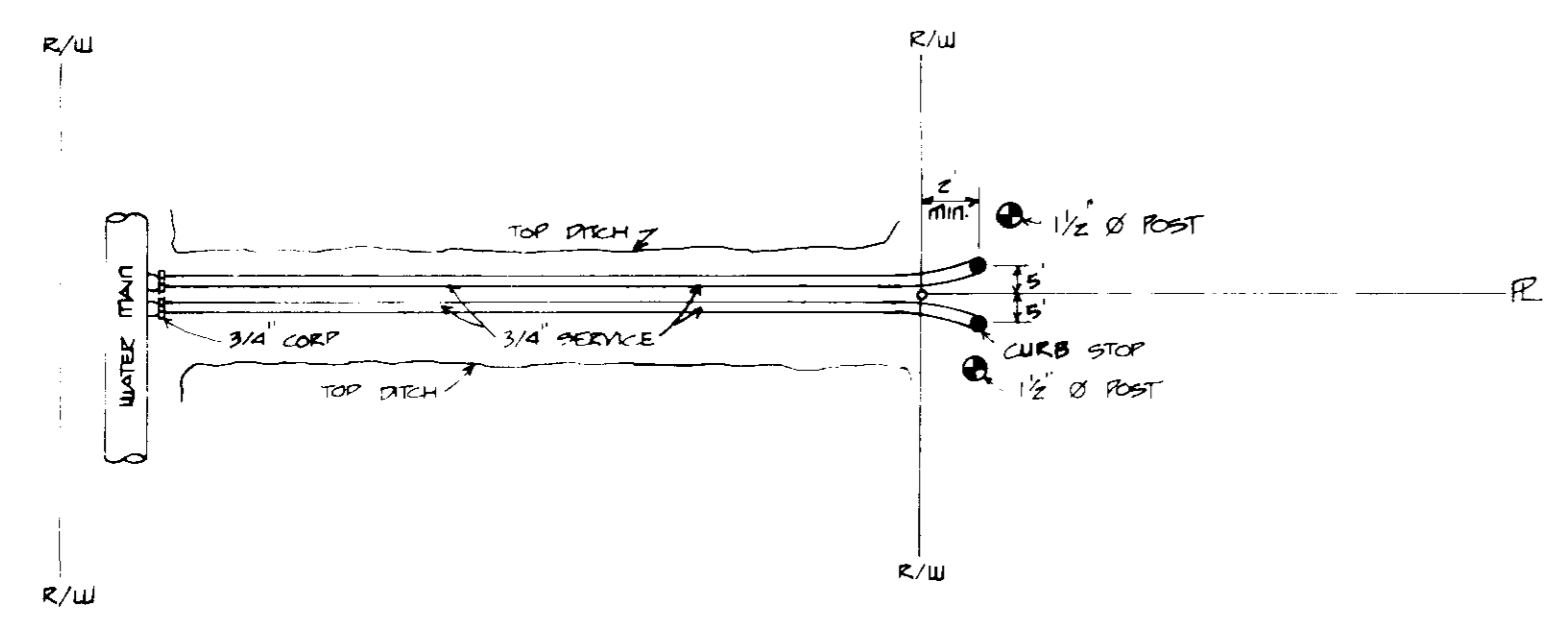
BEARING AREA IN SQ. FT.

NOMINAL PIPE DIAMETER (IN)	DEAD END ON TEE	90° BEND	45° BEND	22 1/2° BEND	11 1/4° BEND
4	2.0	2.0	2.0	2.0	2.0
6	2.0	2.0	2.0	2.0	2.0
8	2.0	2.0	2.0	2.0	2.0
10	2.0	2.0	2.0	2.0	2.0
12	2.0	2.0	2.0	2.0	2.0
14	2.0	2.0	2.0	2.0	2.0
16	2.0	2.0	2.0	2.0	2.0

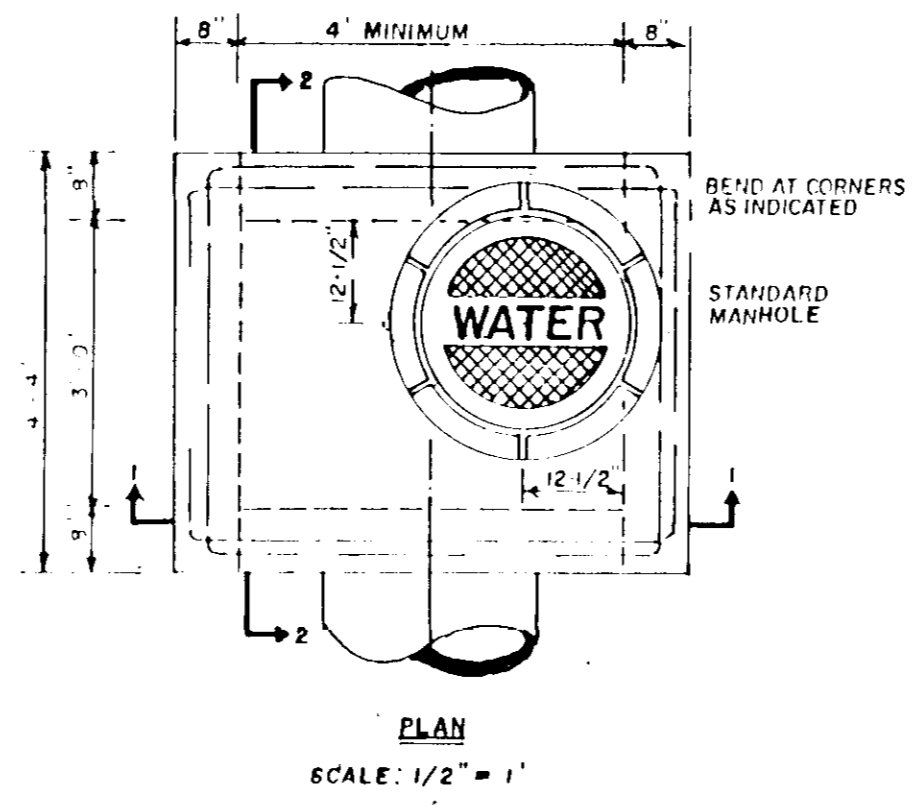
VERTICAL BENDS

NOMINAL PIPE DIAMETER (IN)	45° BEND	90° BEND	11 1/4° BEND
4	0.1223	0.0151	0.0151
6	0.1833	0.0222	0.0222
8	0.2443	0.0293	0.0293
10	0.3053	0.0364	0.0364
12	0.3663	0.0435	0.0435
14	0.4273	0.0506	0.0506
16	0.4883	0.0577	0.0577

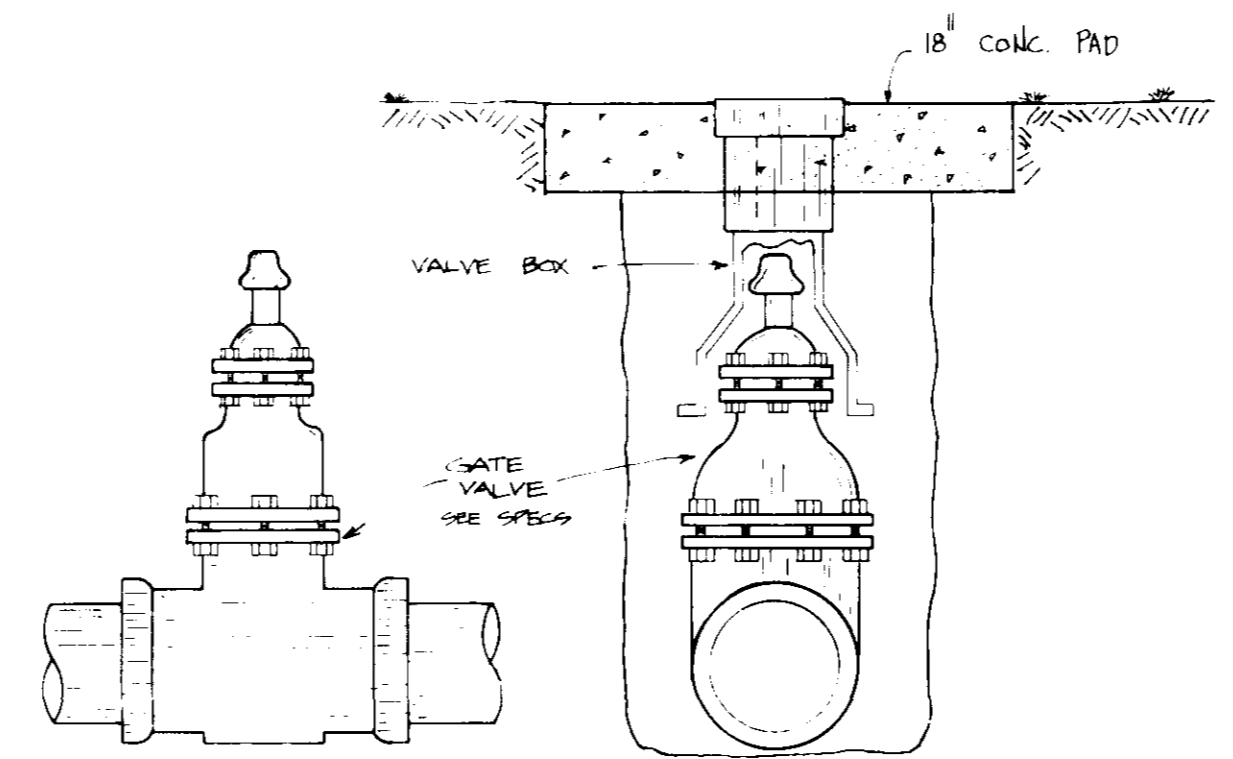
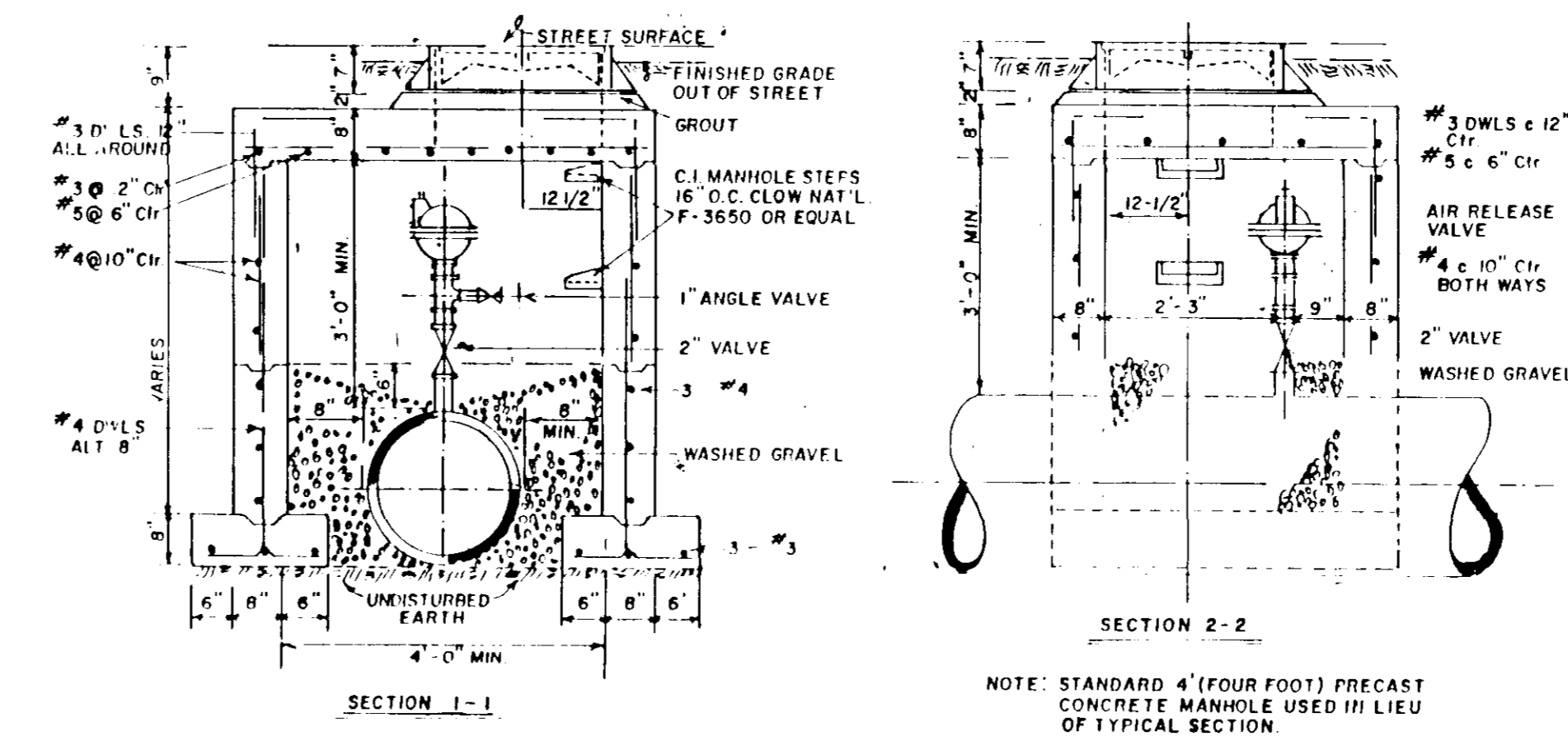
VOLUME OF BLOCKS INCLUDING SOIL LOAD CU. FT. (CU. YDS.)



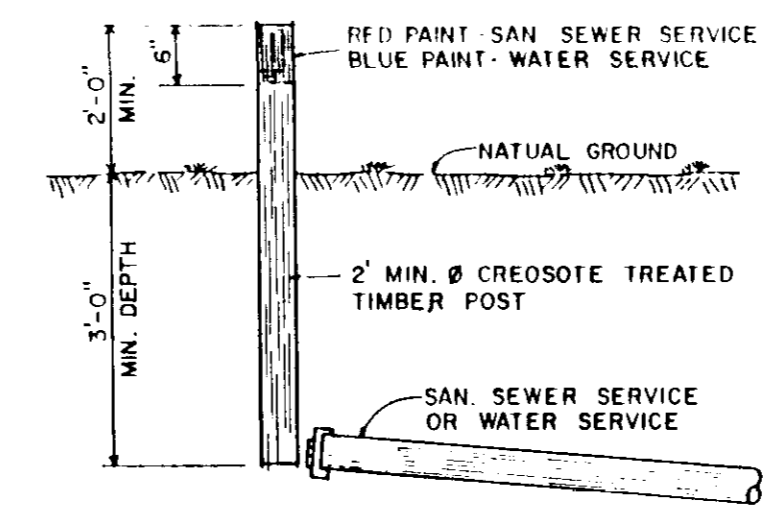
DOUBLE SERVICE DETAIL - WATER



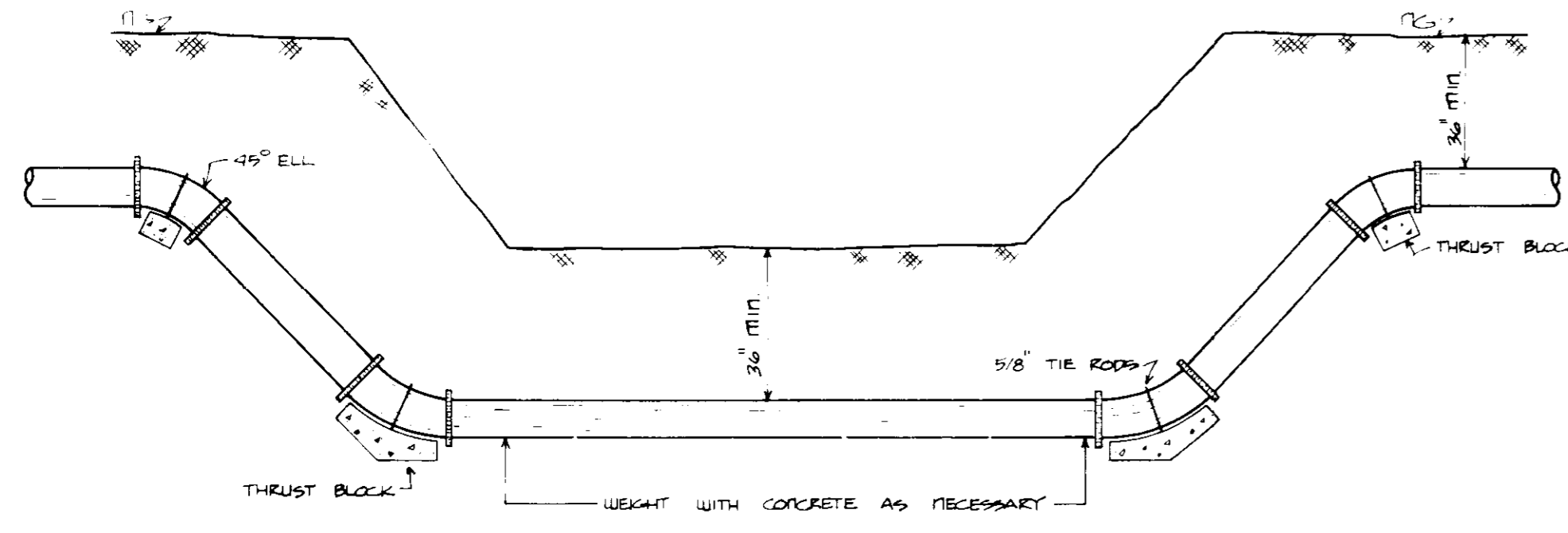
TYPICAL AIR RELEASE VALVE AND MANHOLE



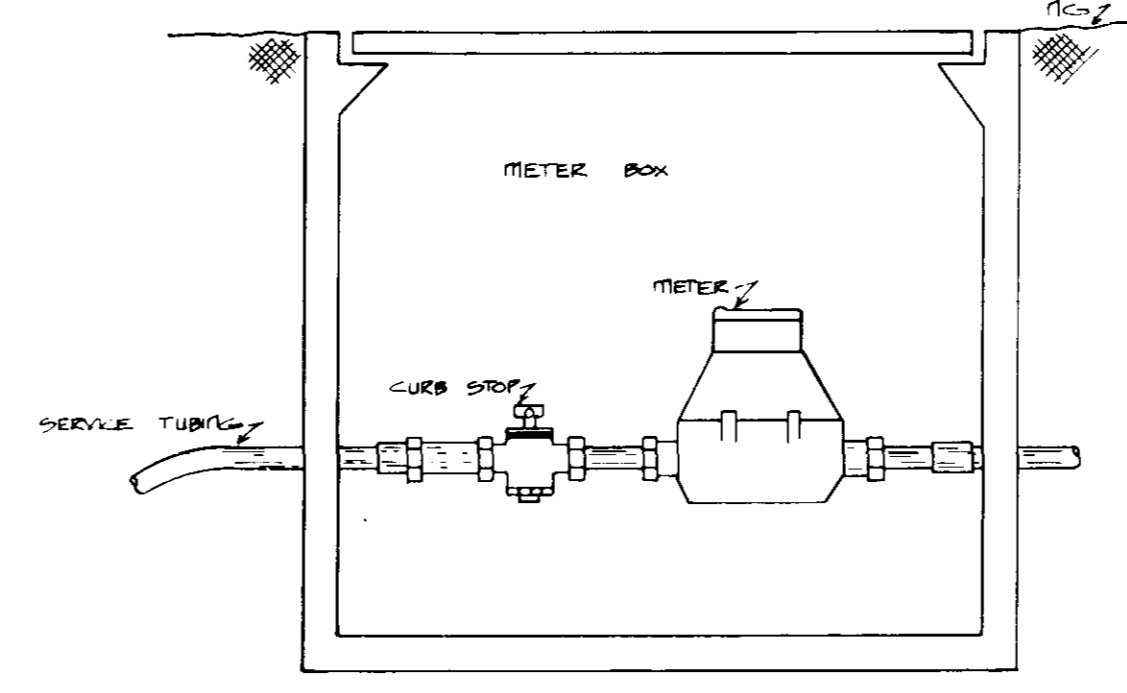
TYPICAL VALVE DETAIL



SERVICE MARKER DETAIL



TYPICAL CREEK CROSSING

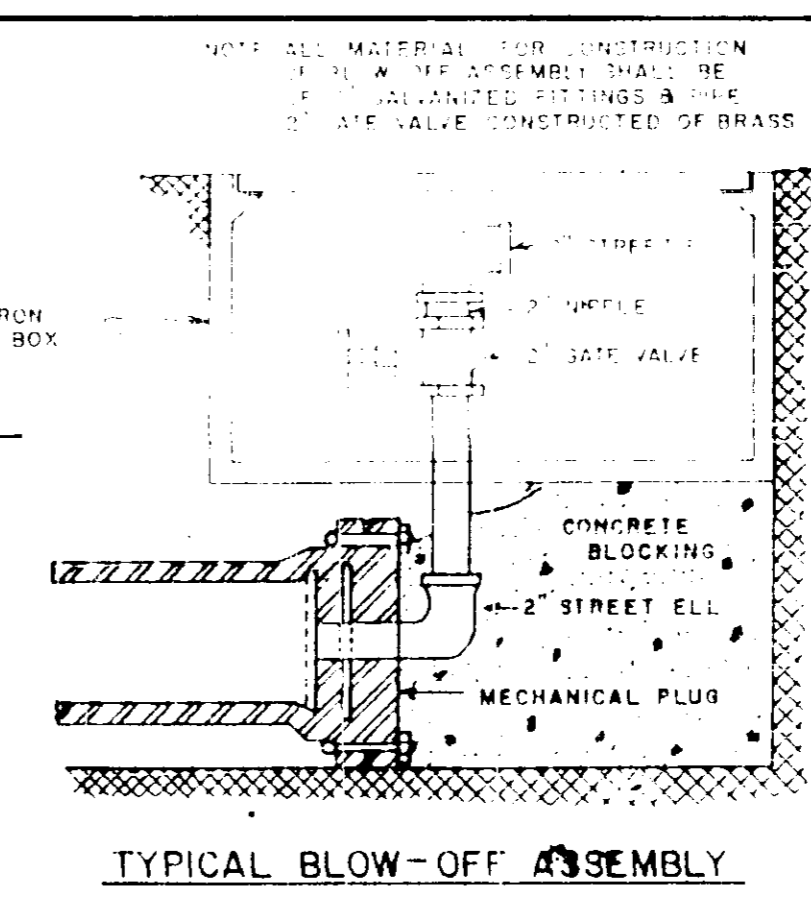


TYPICAL SERVICE ASSEMBLY

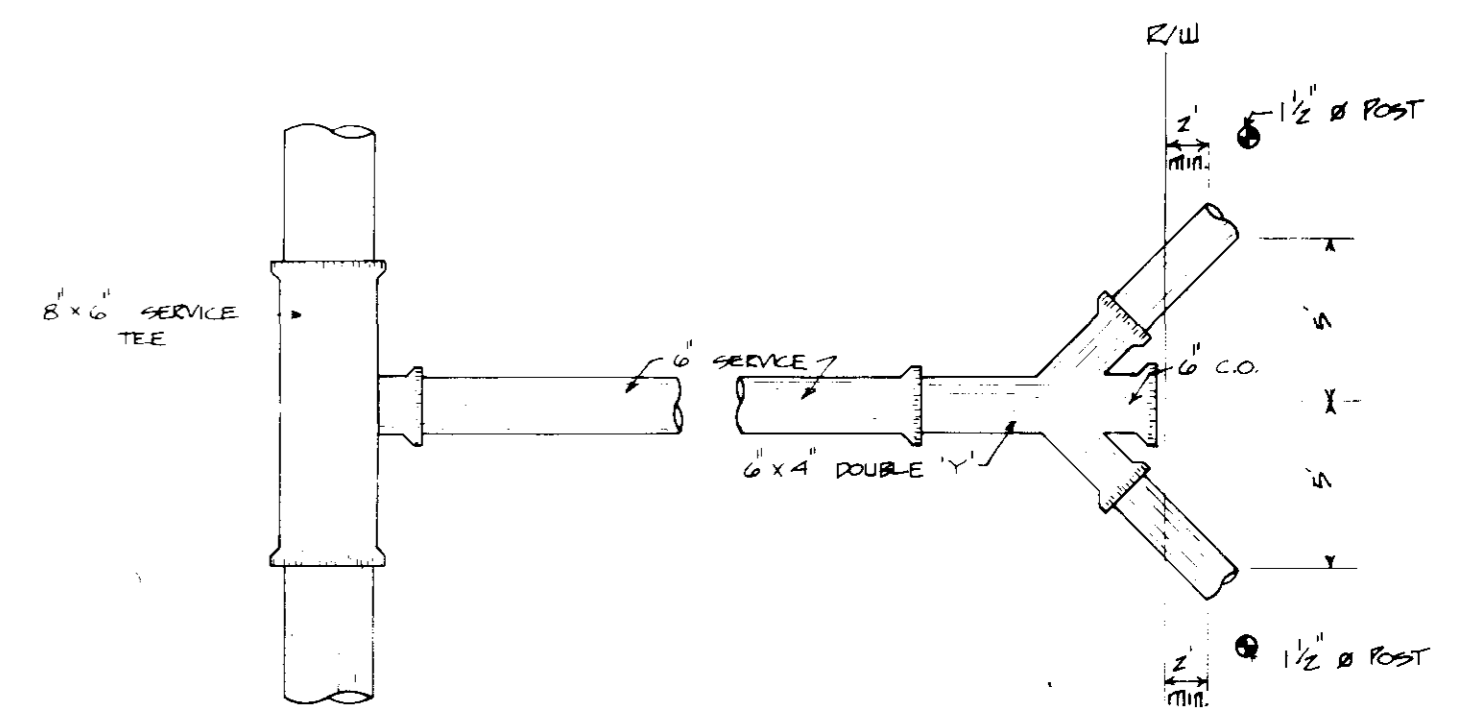
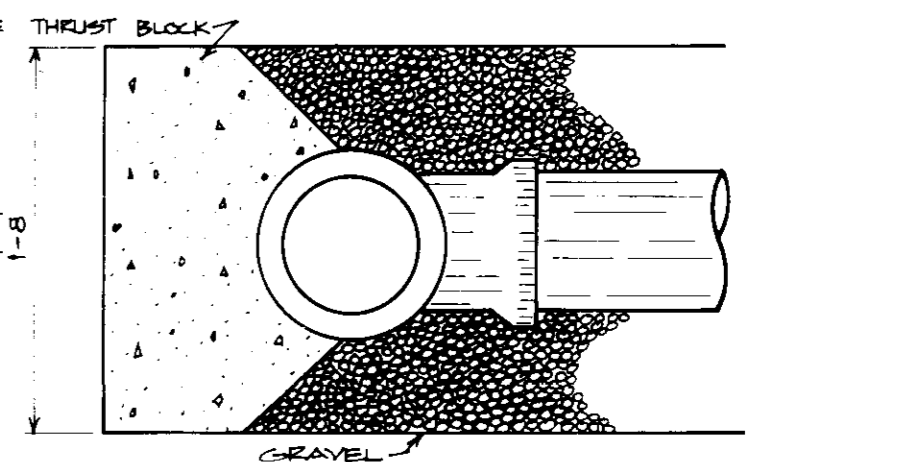
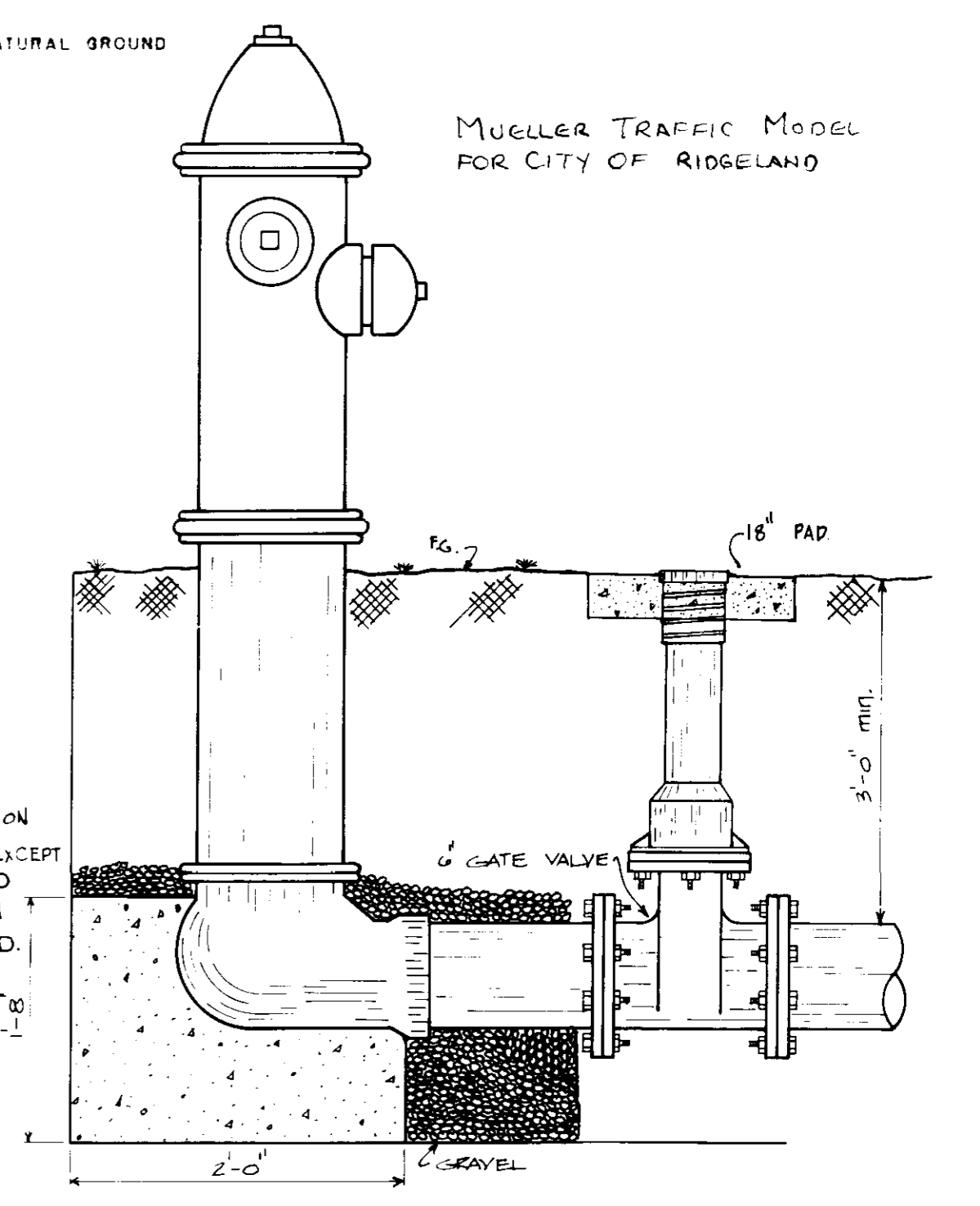
NOTE: 1. ALL FH INSTALLATION REQUIRE A D.I. ANCHOR COUPLING.

2. VALVE REQUIRED ONLY ON 8" OR GREATER MAINS EXCEPT CITY OF RIDGELAND & CITY OF CLINTON WHERE VALVE REQ'D. ON ALL MAINS. ALSO TOWN OF FLORENCE & CITY OF S.W. GA.

3. CITY OF RIDGELAND REQUIRES MUELLER H-10472 BRASS SERVICE CLAMP



TYPICAL BLOW-OFF ASSEMBLY



DOUBLE SEWER SERVICE DETAIL

2	VALVE DETAIL, FH DETAIL	8-8-85
NO.	REVISIONS	BY DATE
<b>STANDARD WATER DETAILS</b>		
DESIGNED BY	K.P.L.	DRAWN BY
SCALE		DATE