

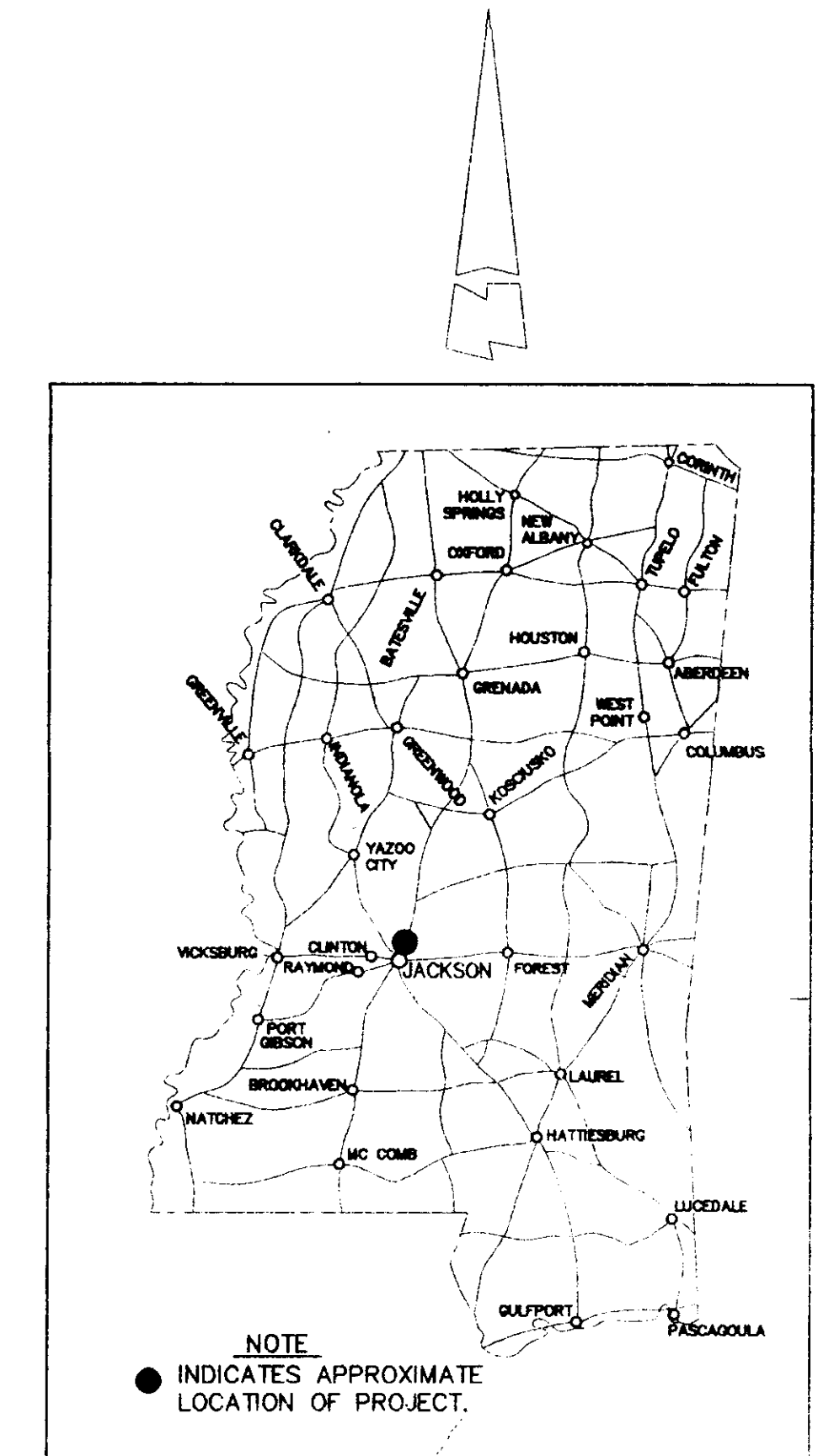
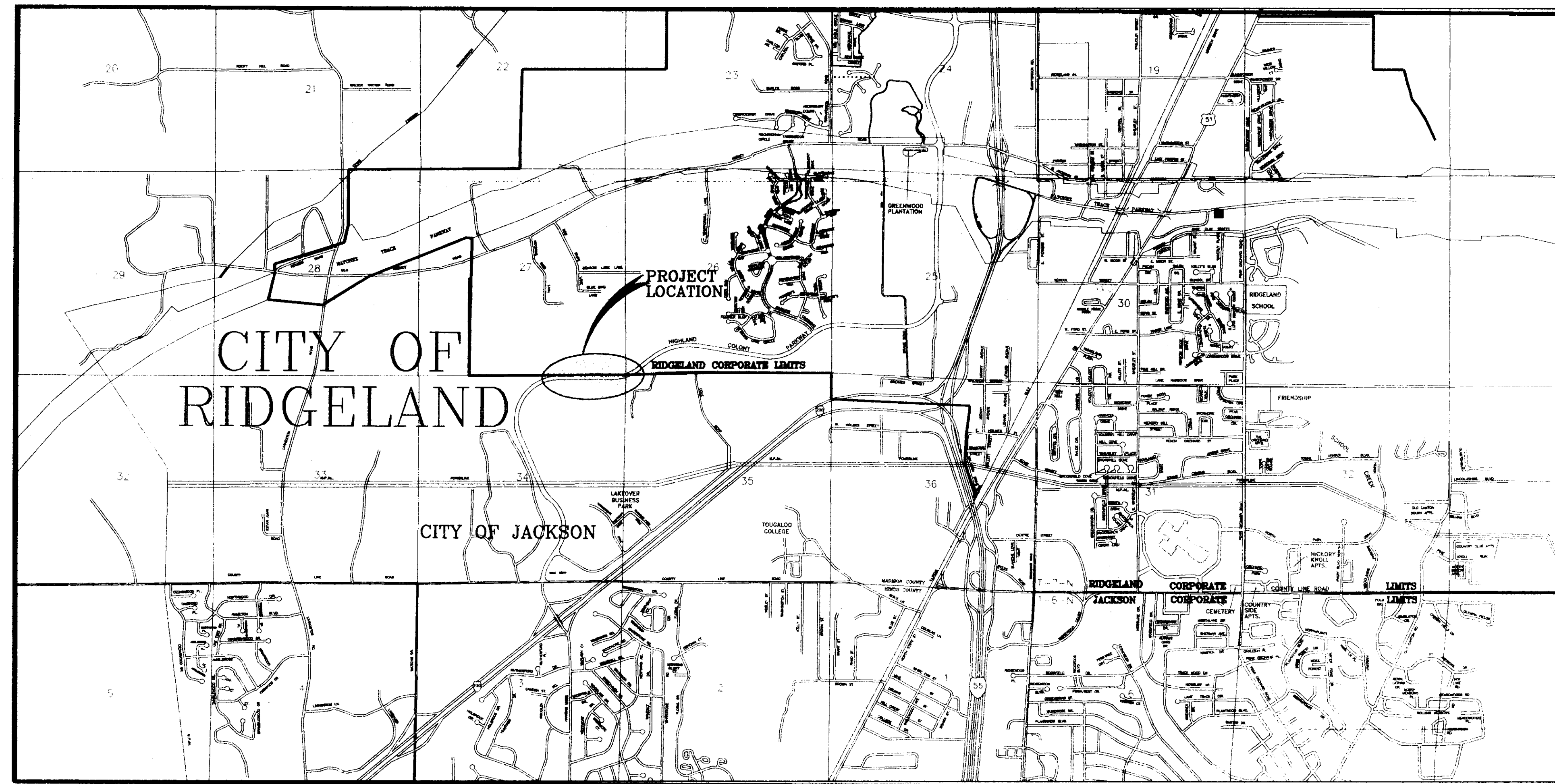
CITY OF RIDGELAND, MISSISSIPPI

S.I.D. SEWER EXTENSION

SCALES

COVER 1 IN. = 2000'
 PROFILE - HORZ. 1 IN. = 50 FT.
 VERT. 1 IN. = 5 FT.

INDEX OF DRAWINGS	
SHEET NUMBER	DESCRIPTION
1	COVER SHEET
3	PLAN & PROFILE
4	SANITARY SEWER STANDARD DETAIL



Mayor:
 Gene F. McGee

Aldermen:
 Ann Asaef
 Carole Davis
 Scott Jones
 Larry Roberts
 Gerald Steen
 Linda Trunzier
 Lisa Walters

City Attorney:
 Jerry Mills

Public Works Director:
 Sam Vinson, P.E.

Asst. Public Works Director:
 Sid Hawthorne

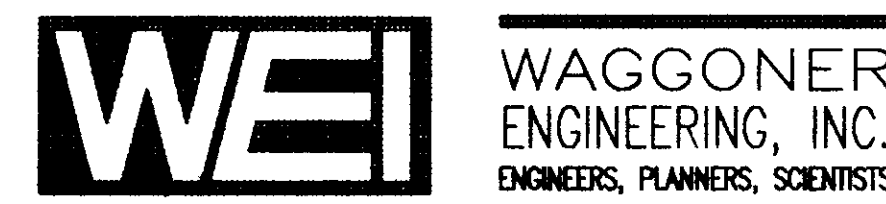
Asst. City Engineer:
 David Williams, P.E.

City Clerk:
 Michael McPhearson

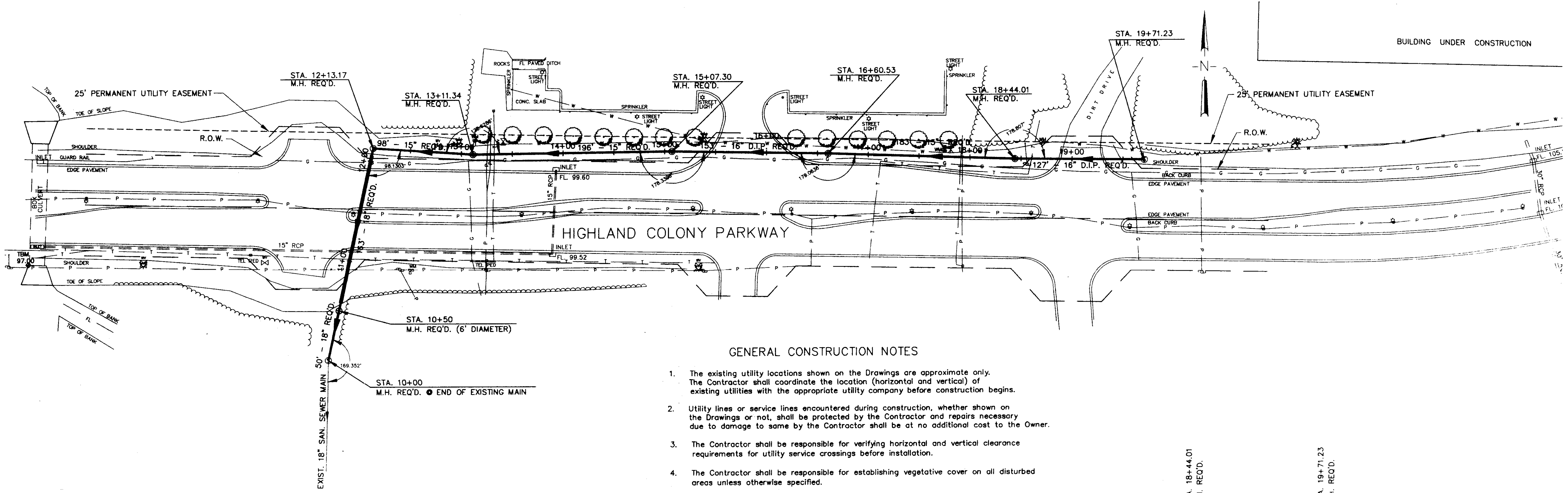
Fire Chief:
 Elmer Waits

Police Chief:
 Charles Newell

NOVEMBER - 1997

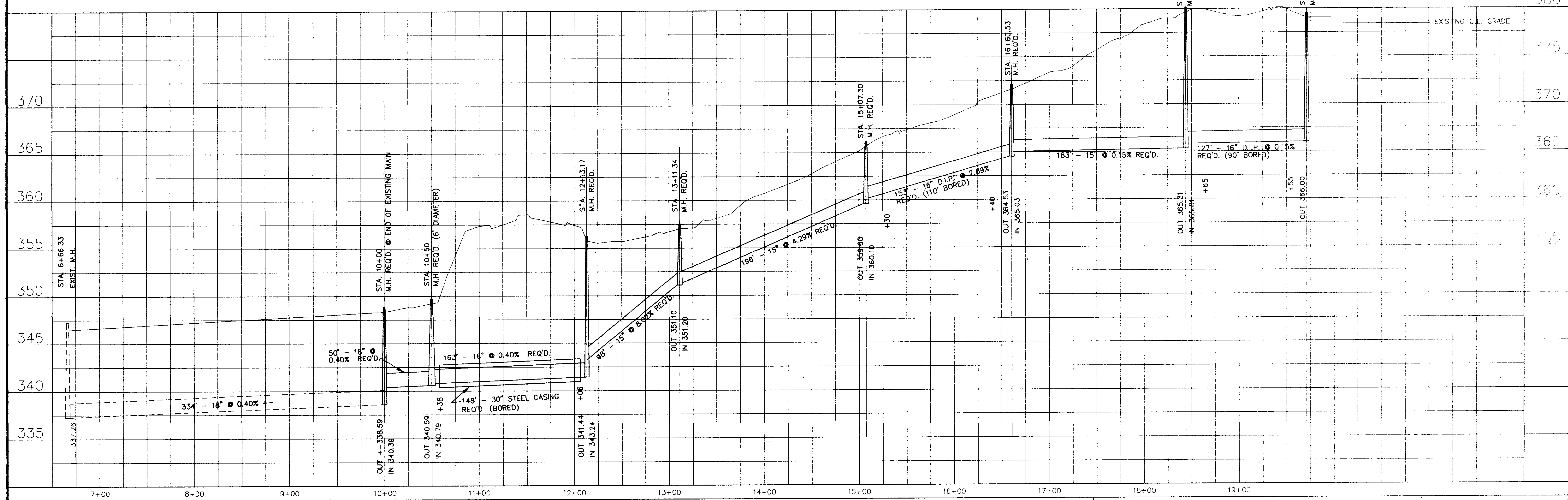


SEC Bg
 12 Nov 1997
 PWP-01941



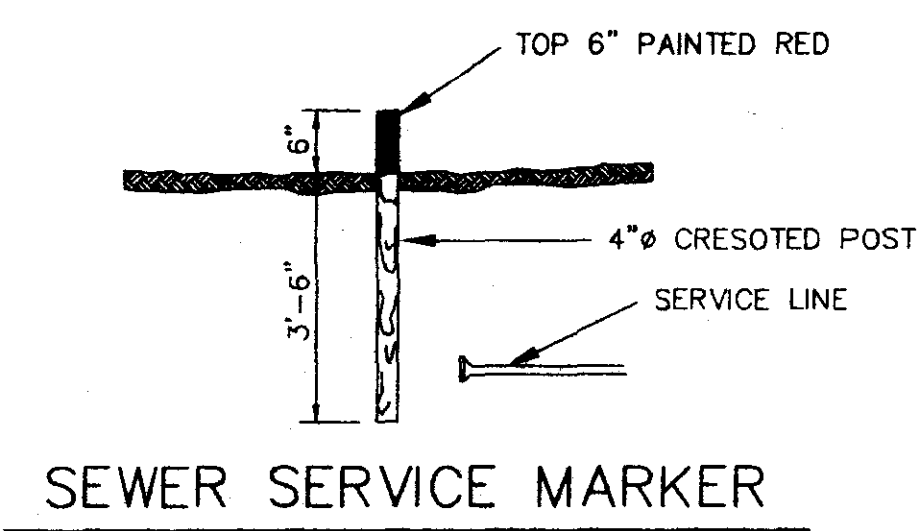
GENERAL CONSTRUCTION NOTES

1. The existing utility locations shown on the Drawings are approximate only. The Contractor shall coordinate the location (horizontal and vertical) of existing utilities with the appropriate utility company before construction begins.
2. Utility lines or service lines encountered during construction, whether shown on the Drawings or not, shall be protected by the Contractor and repairs necessary due to damage to same by the Contractor shall be at no additional cost to the Owner.
3. The Contractor shall be responsible for verifying horizontal and vertical clearance requirements for utility service crossings before installation.
4. The Contractor shall be responsible for establishing vegetative cover on all disturbed areas unless otherwise specified.

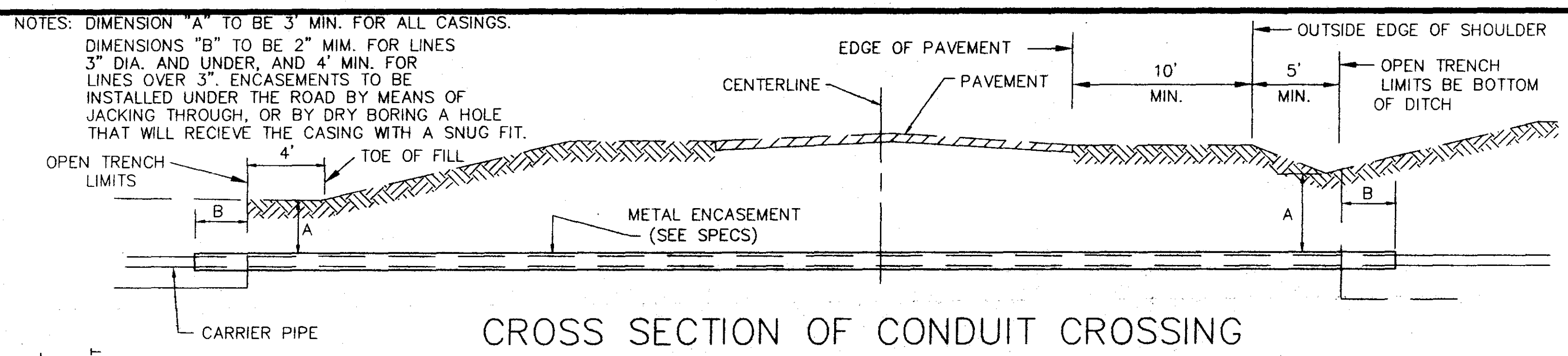


NO. DATE		REVISIONS		BY	DESIGNER	DATE	10-97	SCALE		1" = 50' HORIZ.		1" = 5' VERT.					
				PROJ. MANAGER	WAGGONER ENGINEERING INC. CONSULTING ENGINEERS JACKSON, MISSISSIPPI								CITY OF RIDGELAND S.I.D. SANITARY SEWER MAIN		ACAD PATH ROUTE 37060\HCPW	W.E.I. JOB NO. 37060	SHEET NO. 2

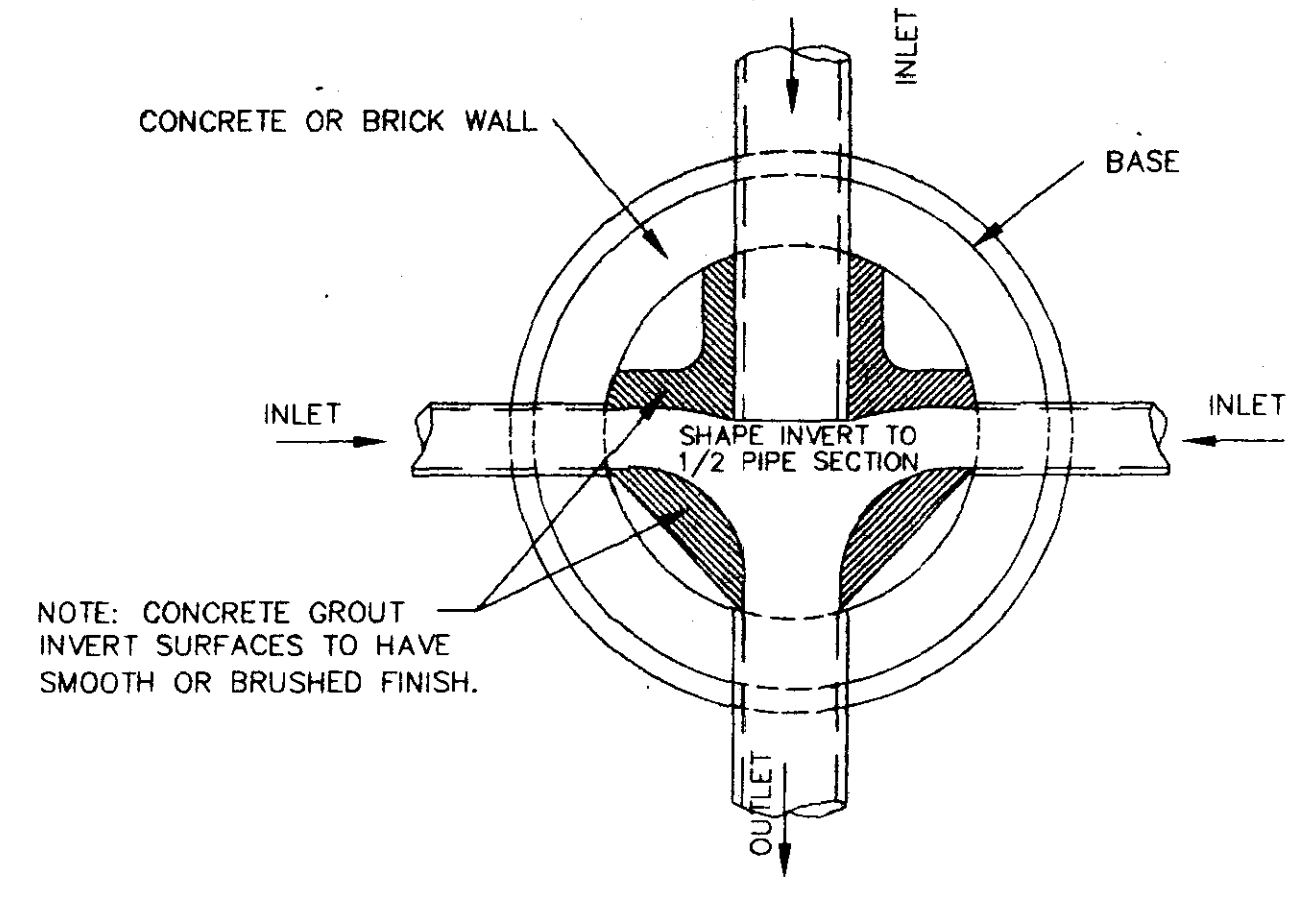
37060\HCPW\BOARDS\CF W.P. MAY 12 10:00 AM '97



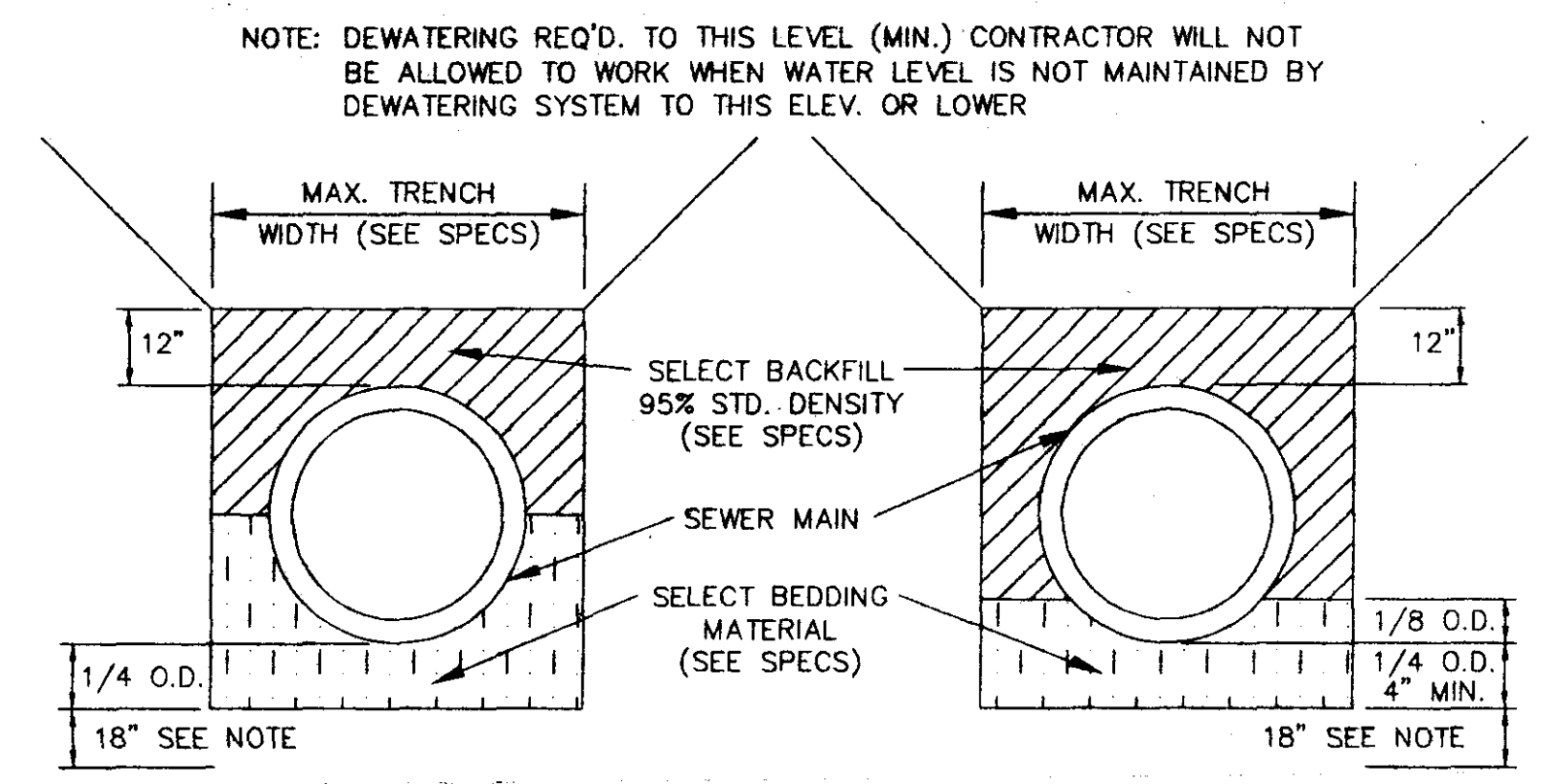
SEWER SERVICE MARKER



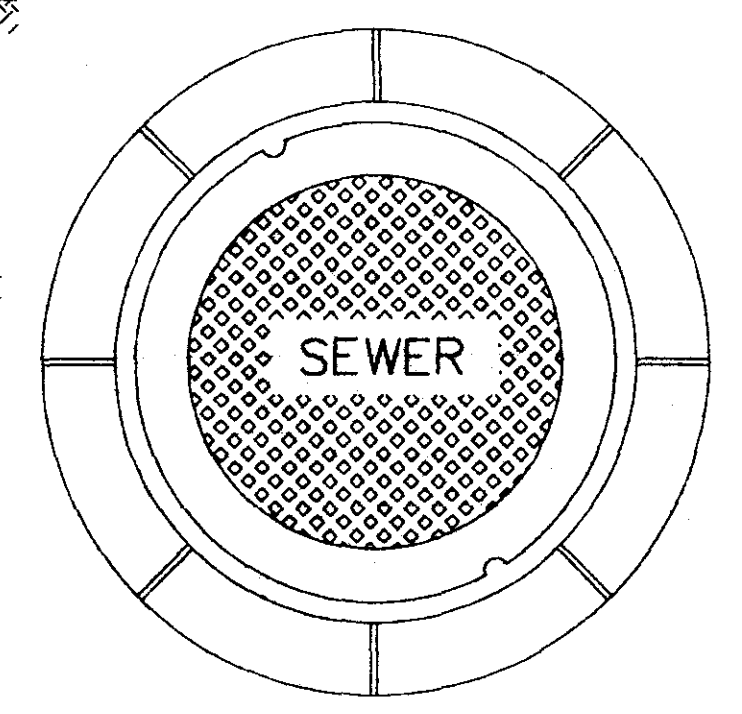
CROSS SECTION OF CONDUIT CROSSING



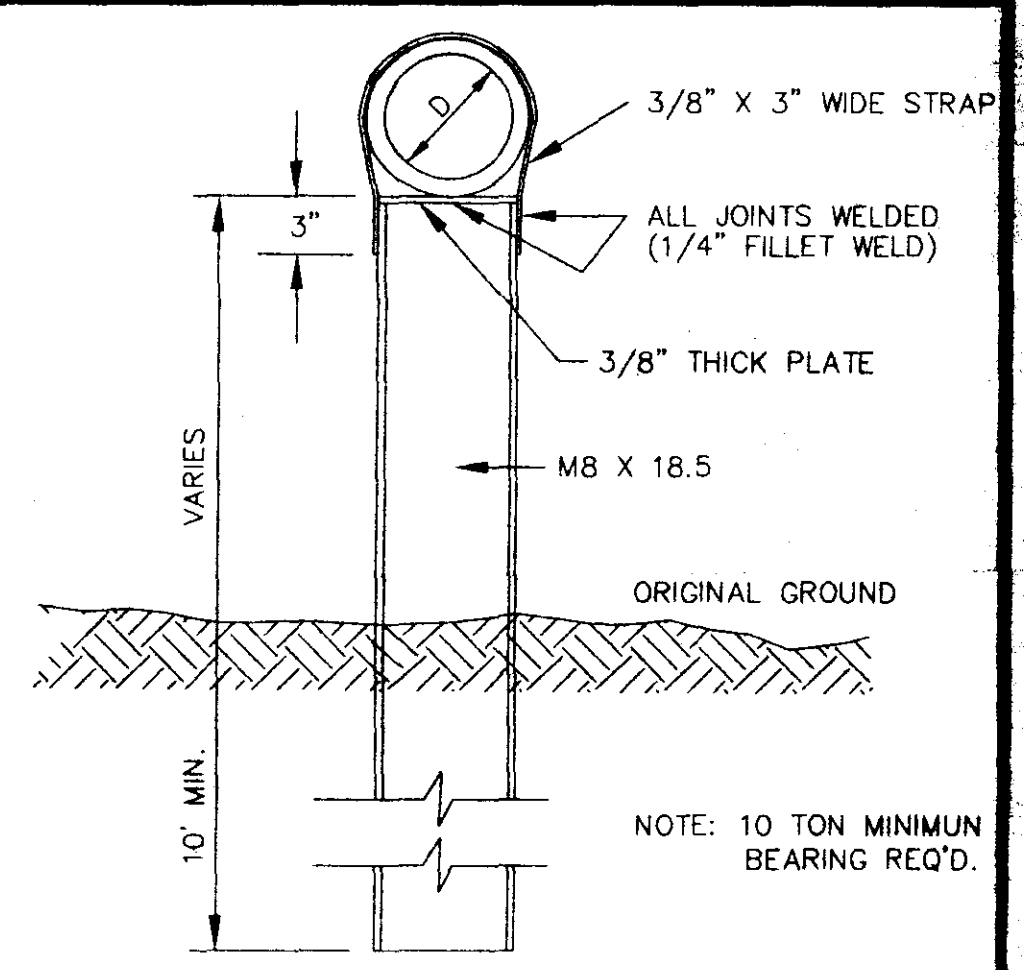
PLAN OF MANHOLE FLOW CHANNELS



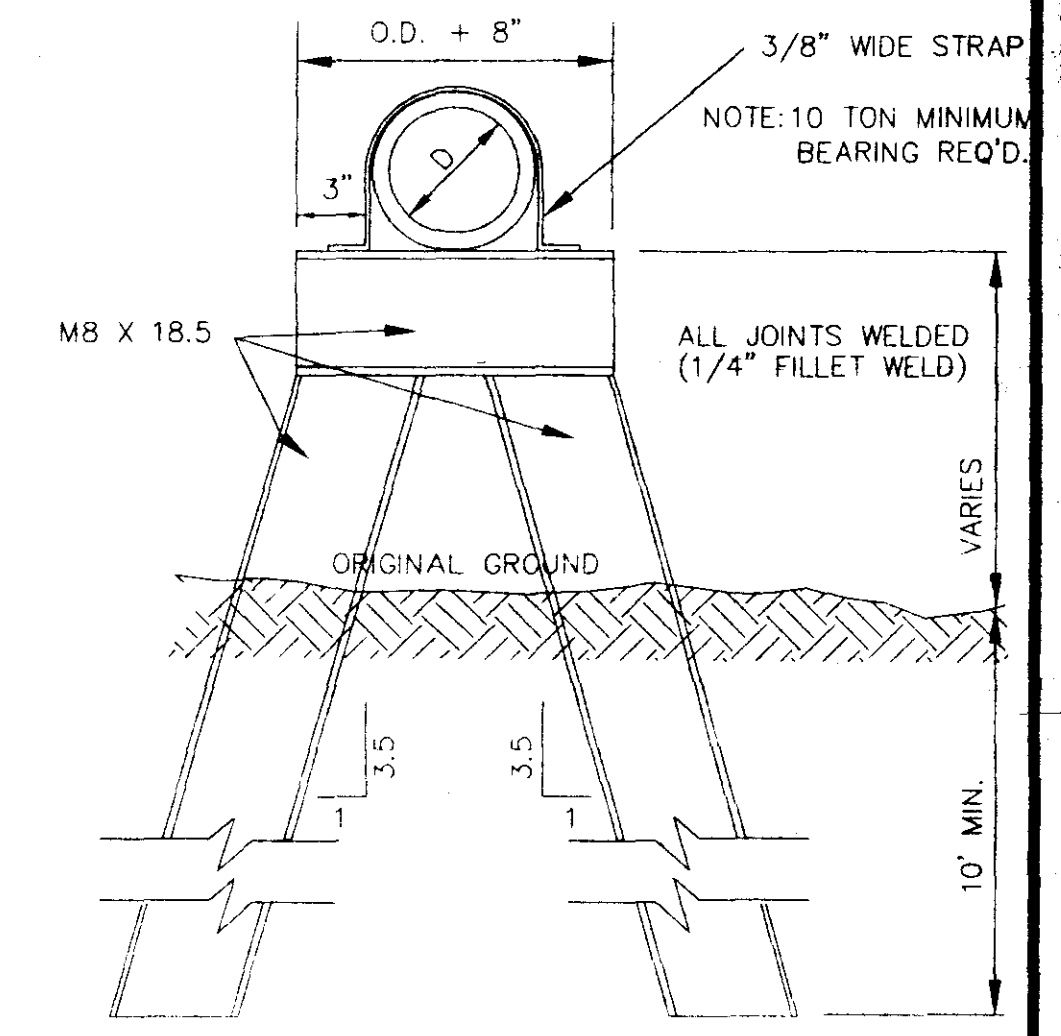
TYPICAL SECTION CLASS "B" BEDDING
TYPICAL SECTION CLASS "C" BEDDING



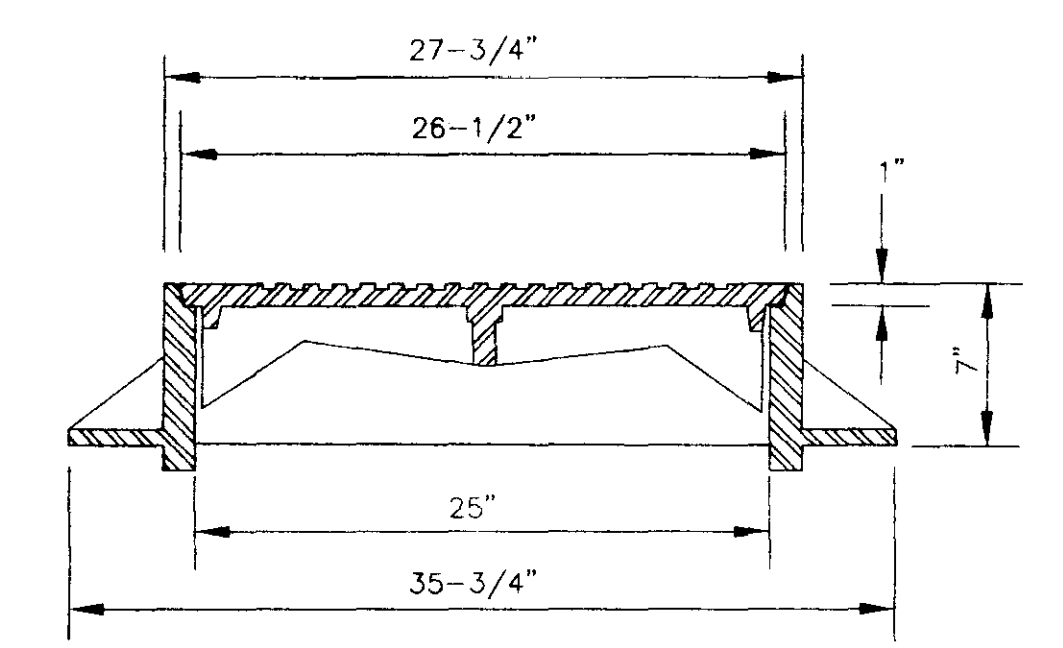
PLAN MANHOLE CASTING



DETAIL TYPE "A" PIER



DETAIL TYPE "B" PIER

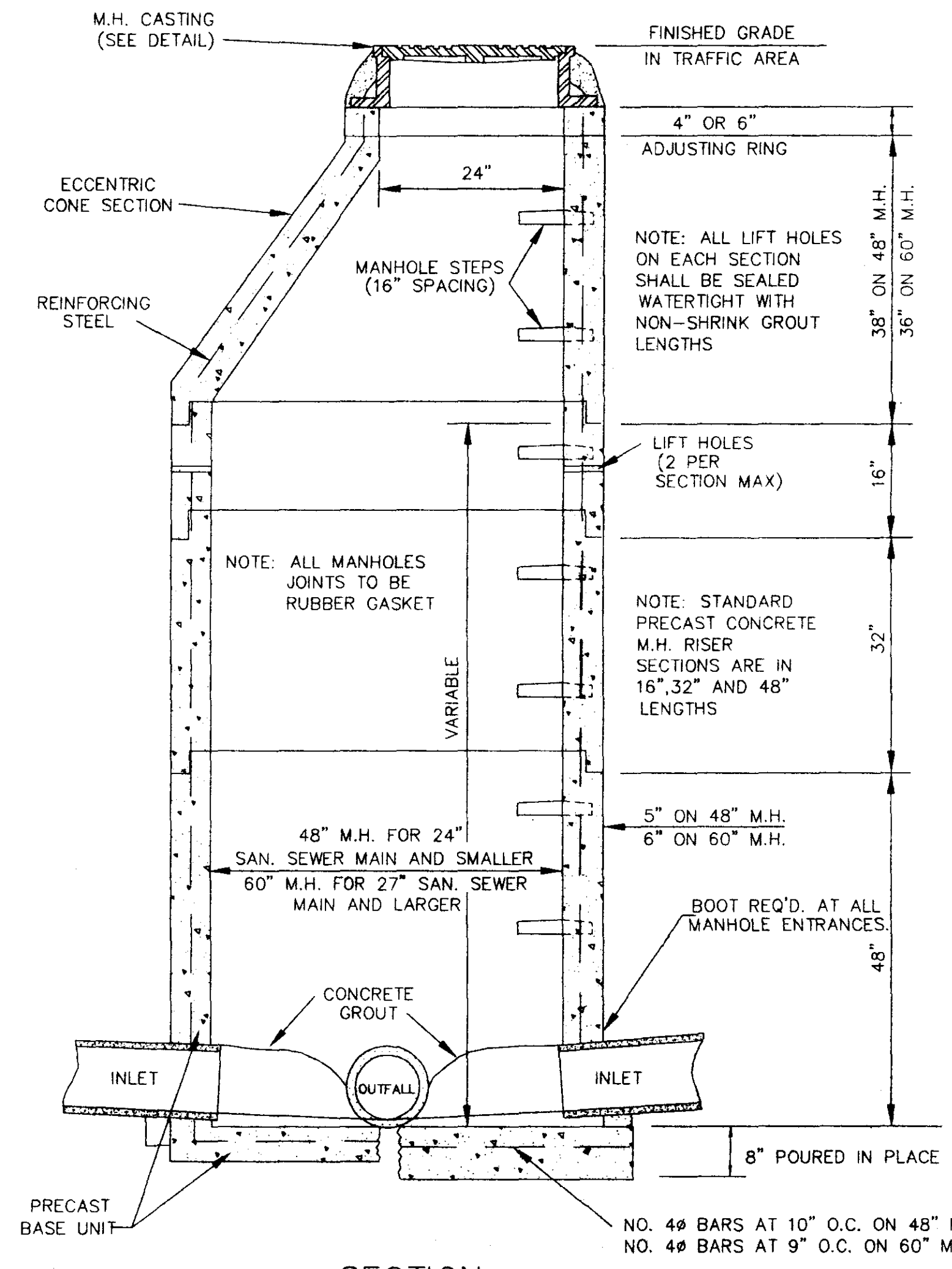


SECTION TYPE "A" MANHOLE CASTING

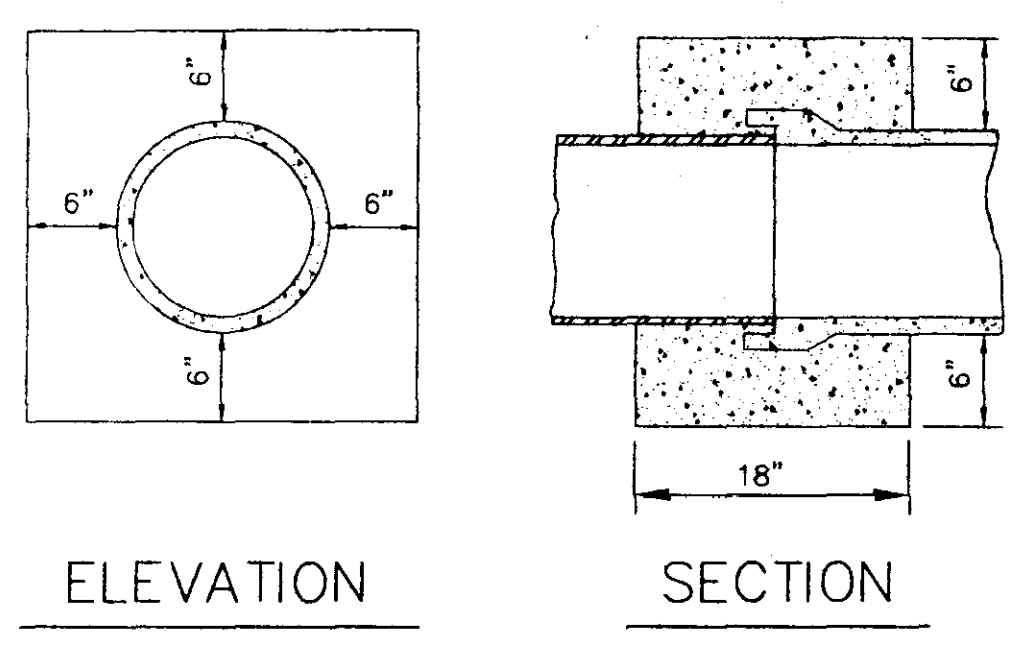
NOTE: 1. USE TYPE "A" MANHOLE CASTING IN STREET R.O.W.
2. USE VULCAN NO. VM-8, (440 lbs.)

SECTION TYPE "B" MANHOLE CASTING

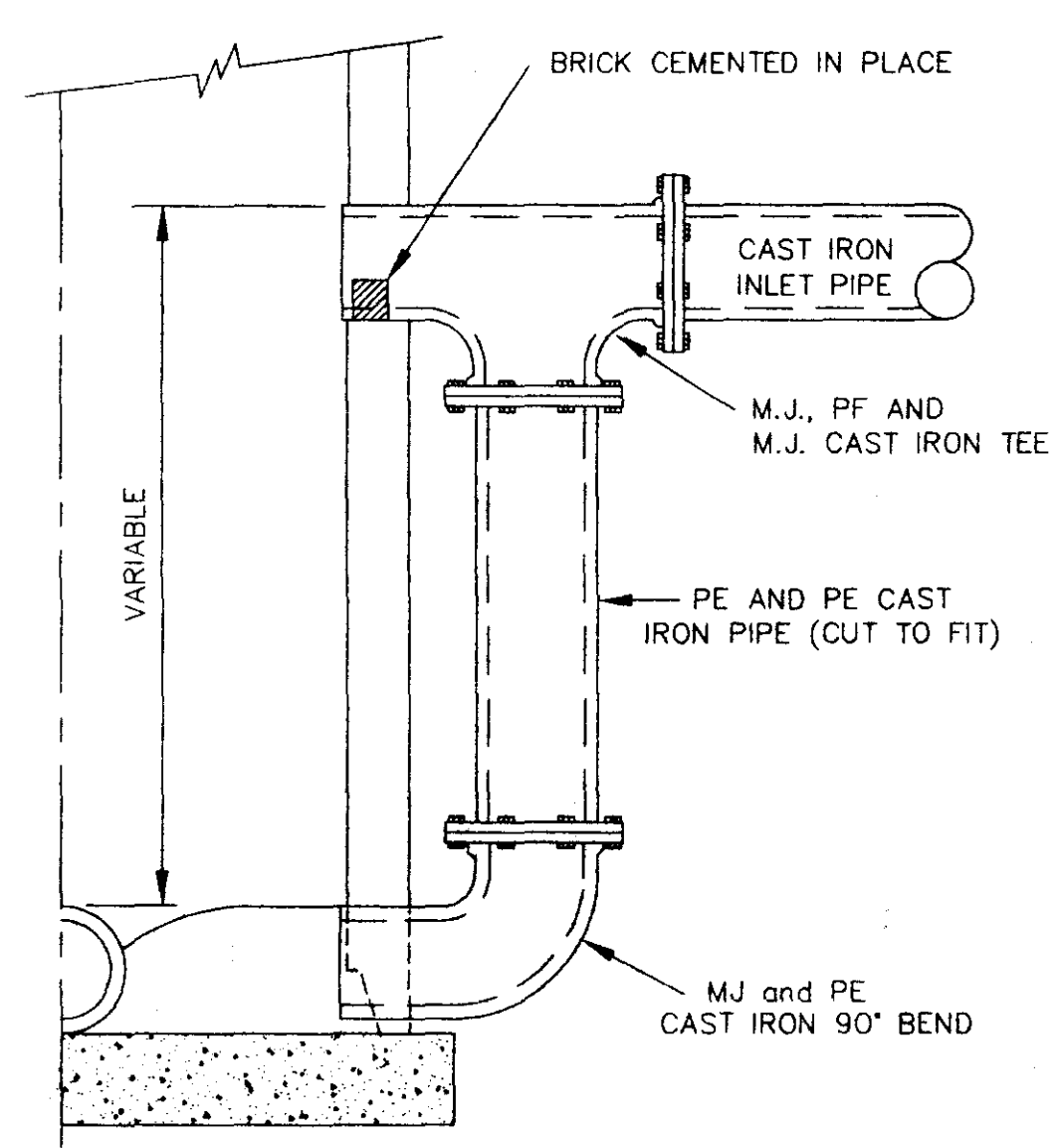
NOTE: 1. USE TYPE "B" MANHOLE CASTING FOR ANY MANHOLE NOT IN A STREET R.O.W.
2. VULCAN NO. VM-7 (300 LBS.) OR NEENAH NO. R-1779 (300 LBS.)



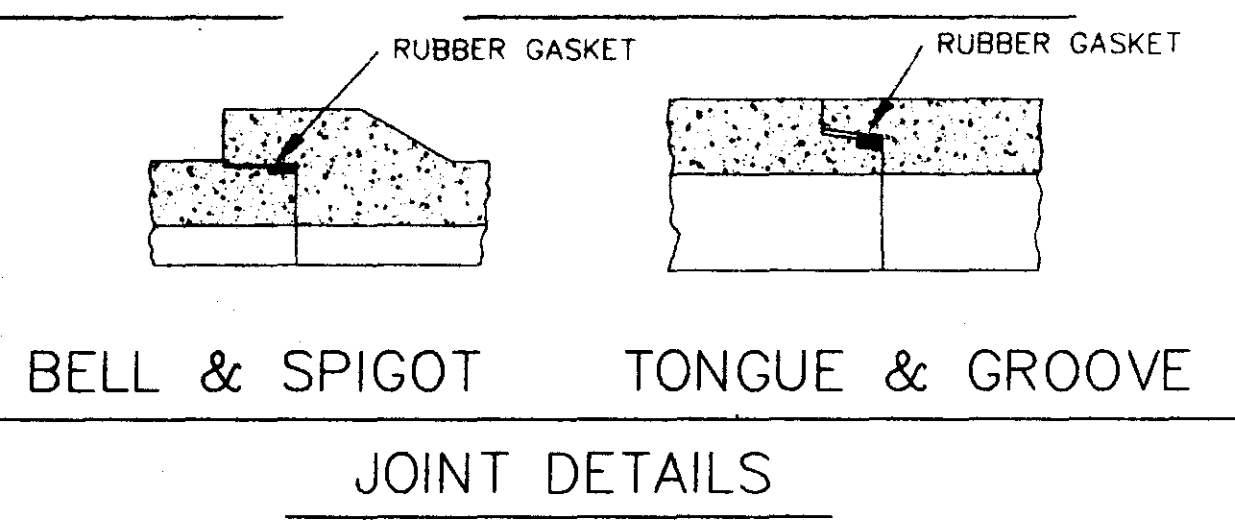
SECTION PRECAST CONCRETE MANHOLE



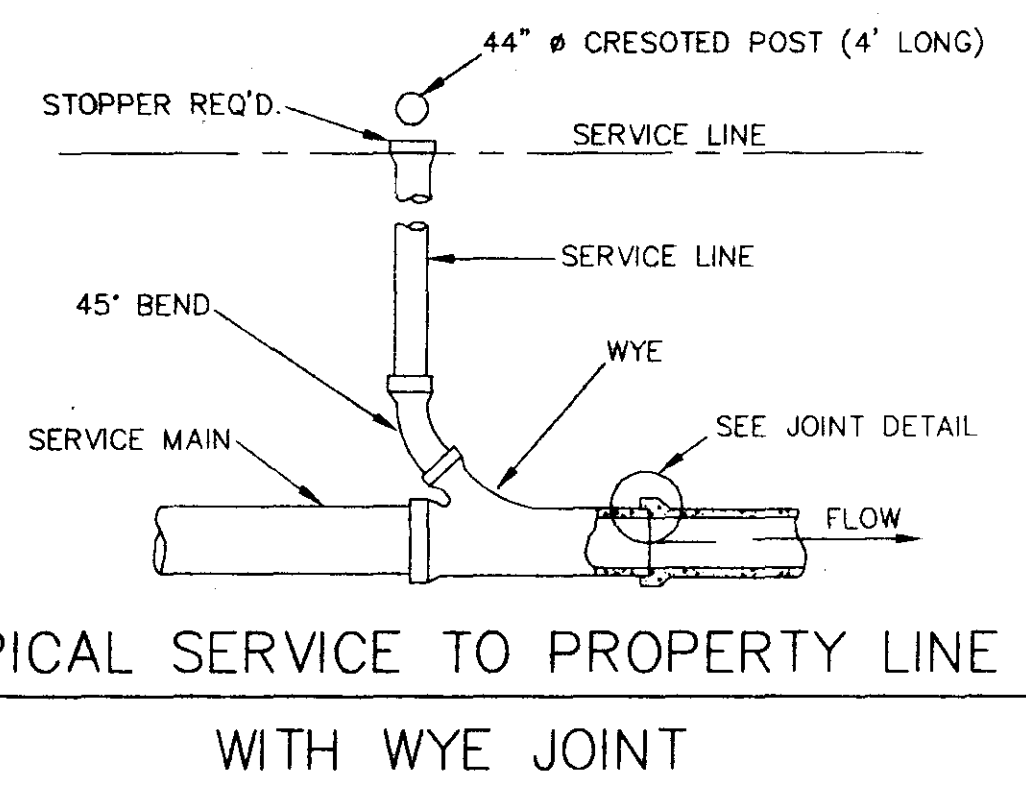
ELEVATION SECTION CONCRETE COLLAR DETAILS



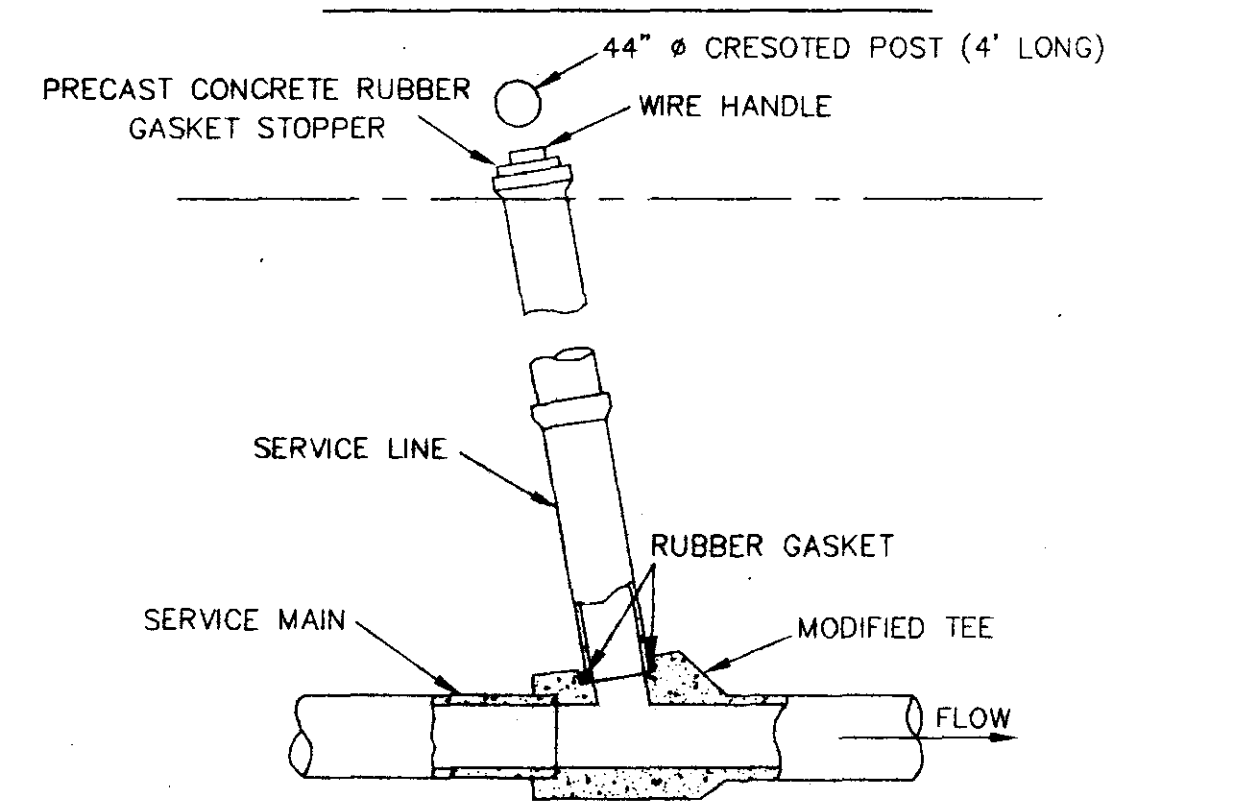
HALF SECTION MANHOLE WITH DROP SECTION



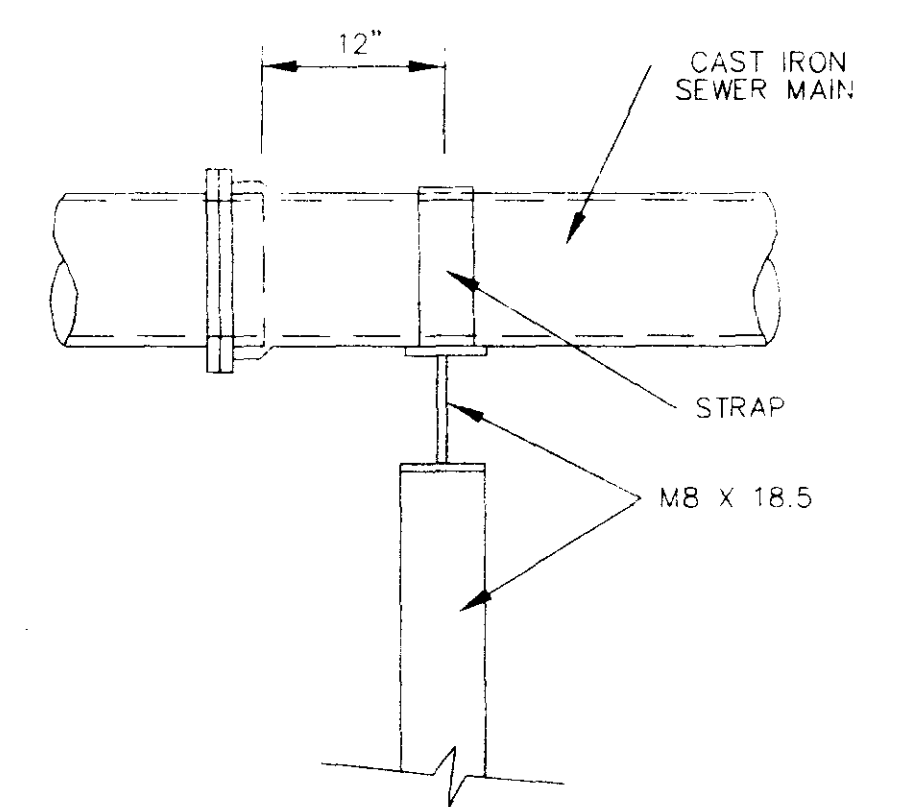
JOINT DETAILS



TYPICAL SERVICE TO PROPERTY LINE WITH WYE JOINT



TYPICAL SERVICE TO PROPERTY LINE WITH MODIFIED TEE JOINT



SIDE ELEVATION TYPE "B" PIER

S.I.D. SEWER EXTENSION		
SEWER DETAILS		
CITY OF RIDGELAND, MISSISSIPPI		
WAGGONER ENGINEERING, INC. Consulting Engineers - Jackson, Mississippi		
DRAWN BY: B.F.	DATE: 11-7-97	WORKING NUMBER
REVIEWED BY: J.R.	SCALE: N.T.S.	SHEET NUMBER 3 OF 3

C:\P\97060\SEWSTAND.dwg Nov 07 11:03:31 1997