

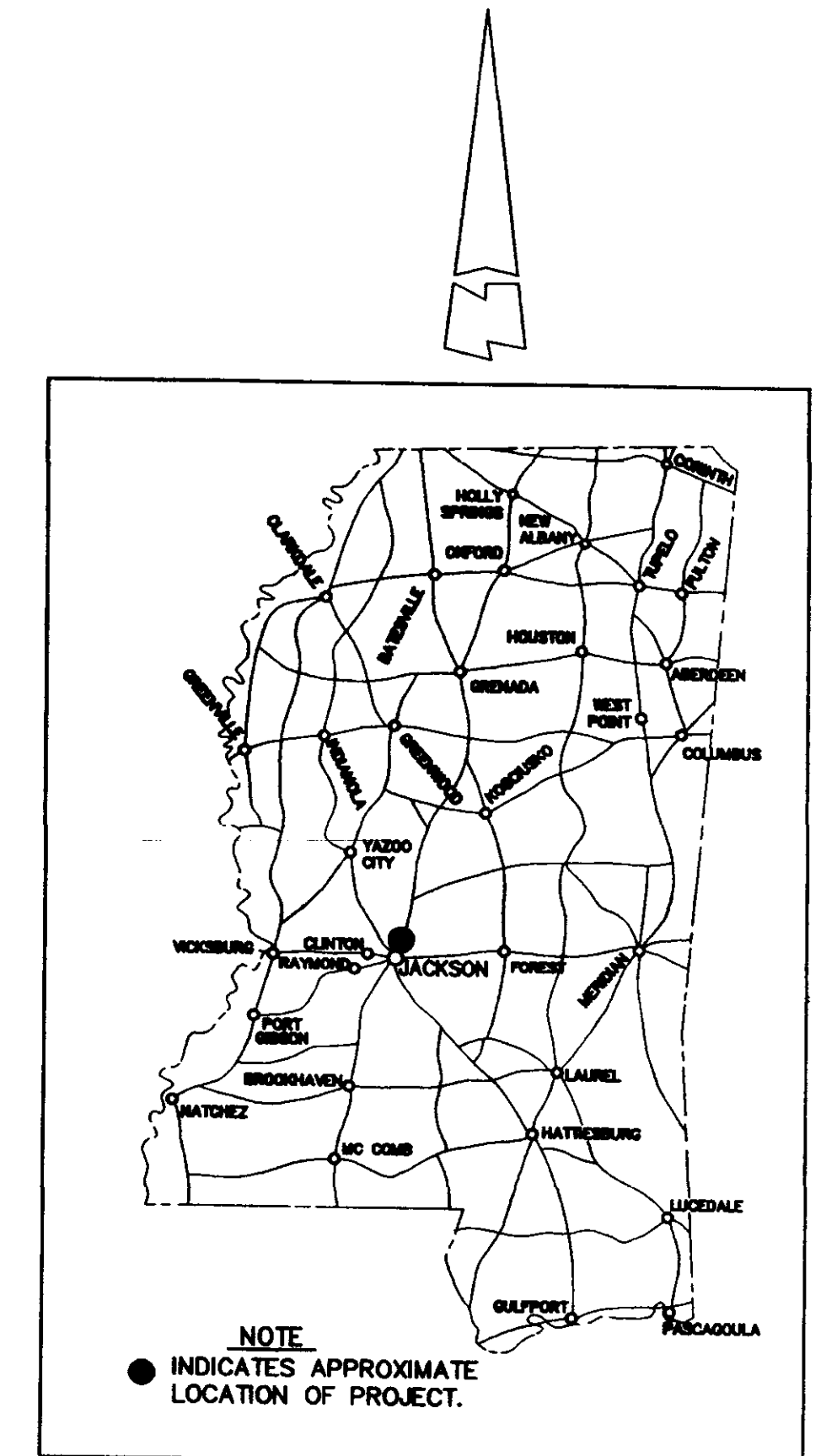
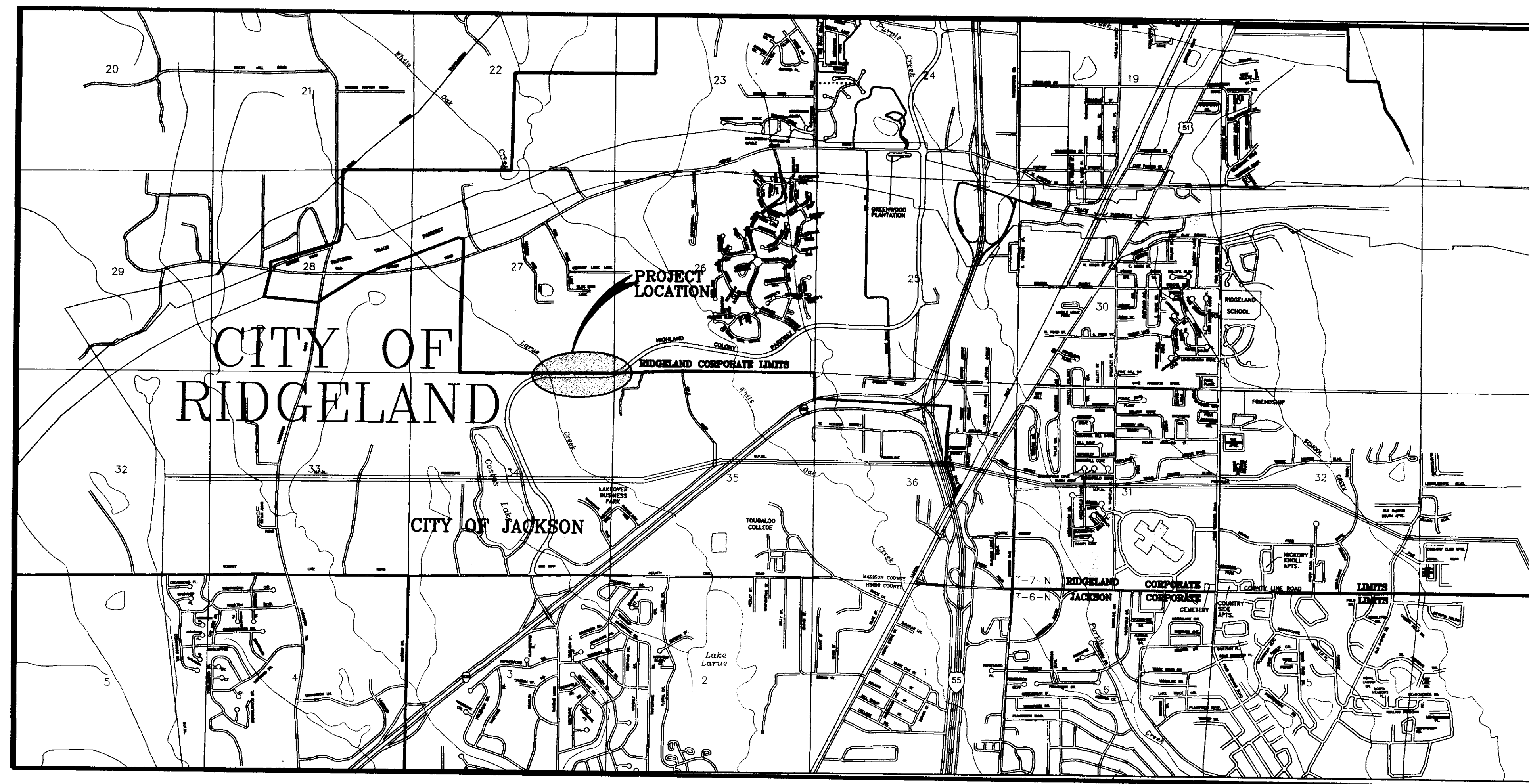
CITY OF RIDGELAND, MISSISSIPPI

S.I.D. SEWER EXTENSION

SCALES

COVER 1 IN. = 2000'
 PROFILE- HORZ. 1 IN. = 50 FT.
 VERT. 1 IN. = 5 FT.

INDEX OF DRAWINGS	
SHEET NUMBER	DESCRIPTION
1	COVER SHEET
3	PLAN & PROFILE
4	SANITARY SEWER STANDARD DETAIL



Mayor:
 Gene F. McGee

Aldermen:
 Ann Assaf
 Carole Davis
 Scott Jones
 Larry Roberts
 Gerald Steen
 Linda Trunzier
 Lisa Walters

City Attorney:
 Jerry Mills

Public Works Director:
 Sam Vison, P.E.

Asst. Public Works Director:
 Sid Hawthorne

Asst. City Engineer:
 David Williams, P.E.

City Clerk:
 Michael McPheerson

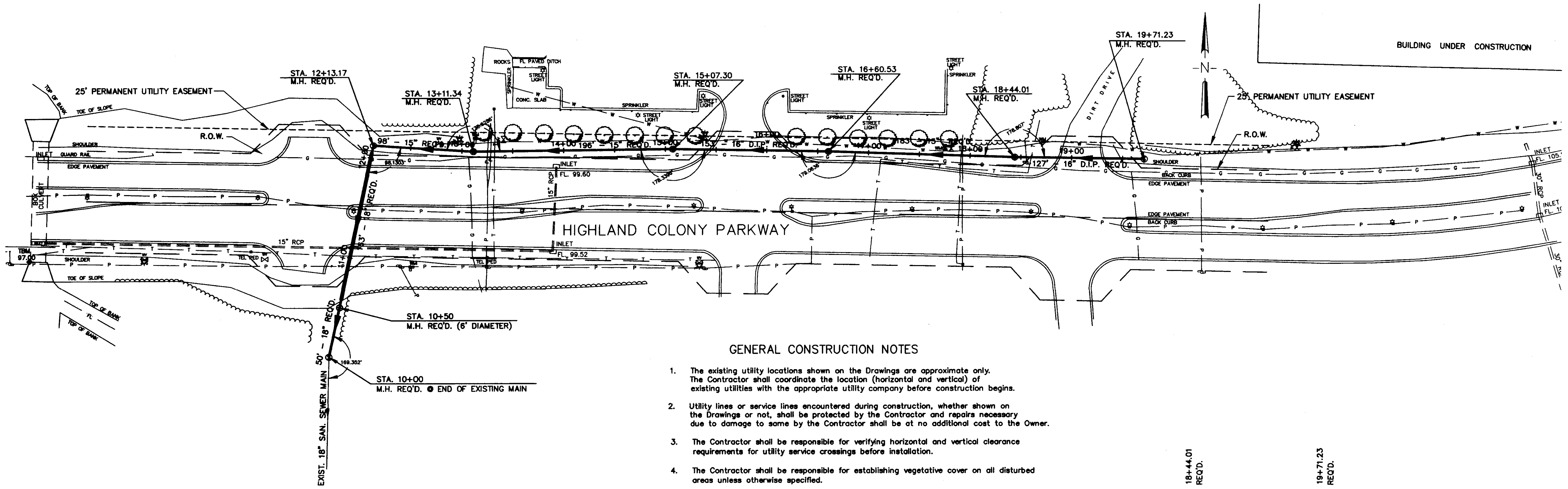
Fire Chief:
 Elmer Walts

Police Chief:
 Charles Newell

NOVEMBER - 1997

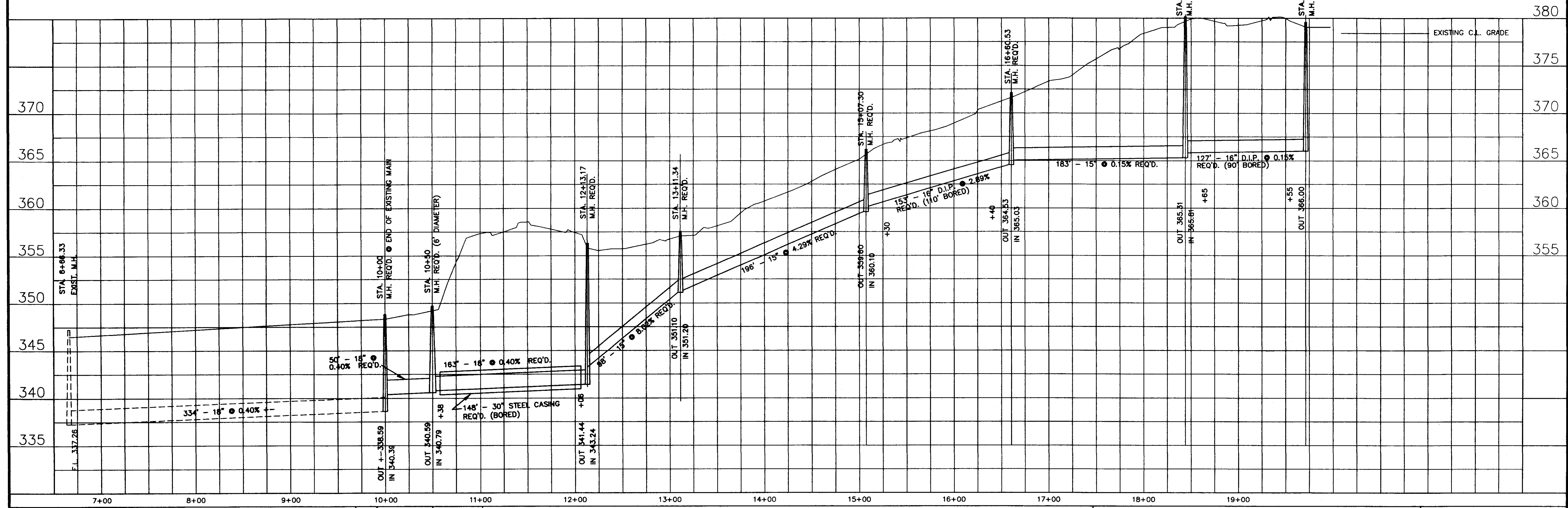
WEI WAGGONER
 ENGINEERING, INC.
 ENGINEERS, PLANNERS, SCIENTISTS

PWP-05035
 NOV 1997



GENERAL CONSTRUCTION NOTES

1. The existing utility locations shown on the Drawings are approximate only. The Contractor shall coordinate the location (horizontal and vertical) of existing utilities with the appropriate utility company before construction begins.
2. Utility lines or service lines encountered during construction, whether shown on the Drawings or not, shall be protected by the Contractor and repairs necessary due to damage to same by the Contractor shall be at no additional cost to the Owner.
3. The Contractor shall be responsible for verifying horizontal and vertical clearance requirements for utility service crossings before installation.
4. The Contractor shall be responsible for establishing vegetative cover on all disturbed areas unless otherwise specified.

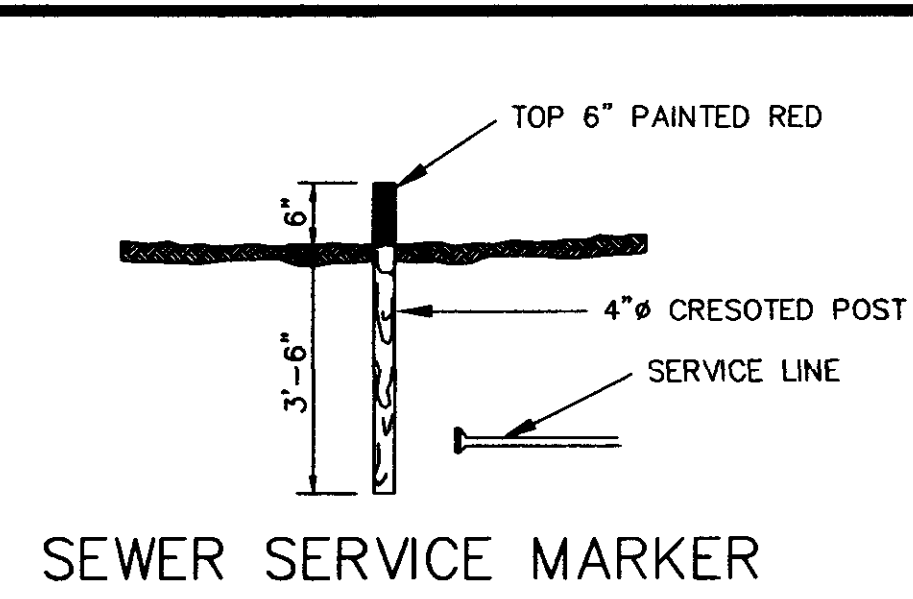


NO.	DATE	REVISIONS	BY	DESIGNER	DATE

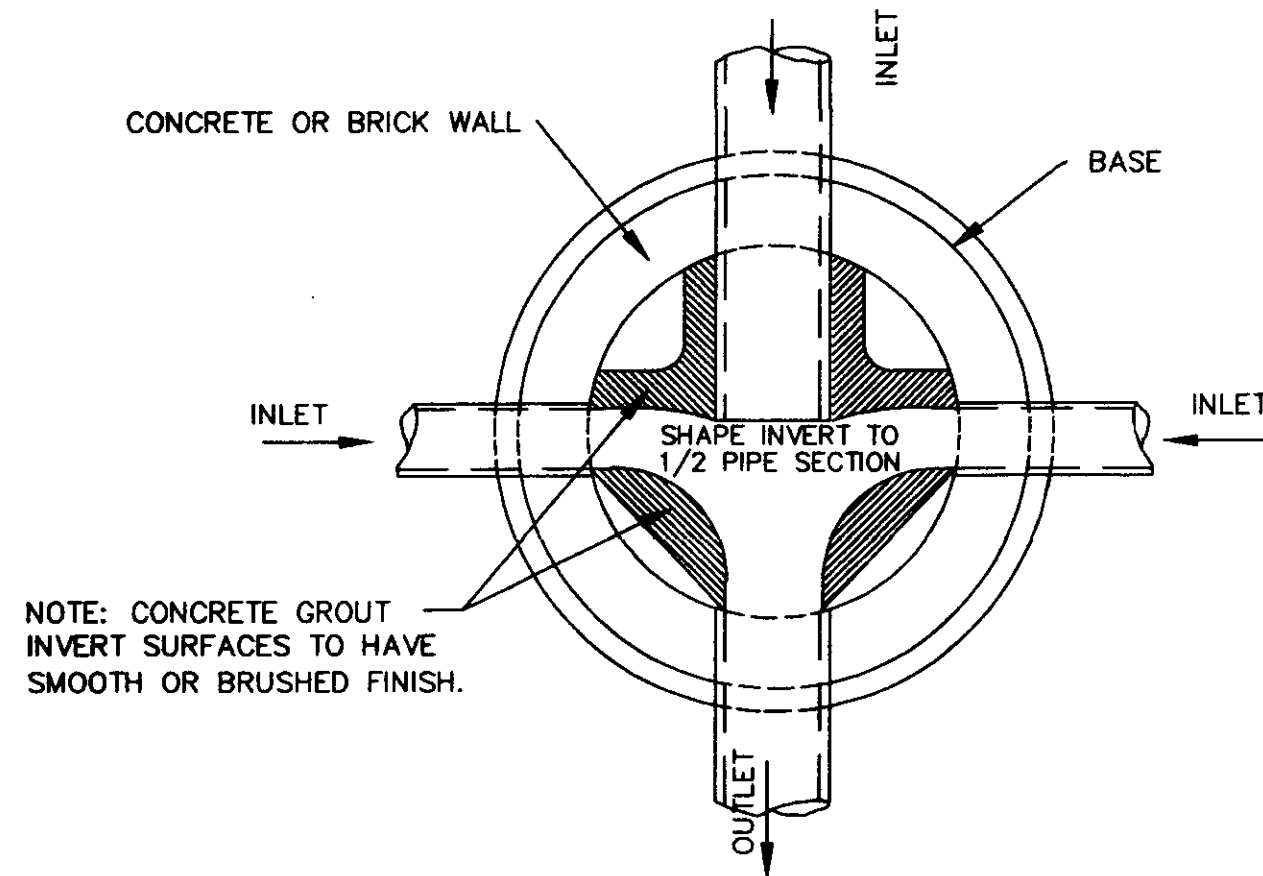
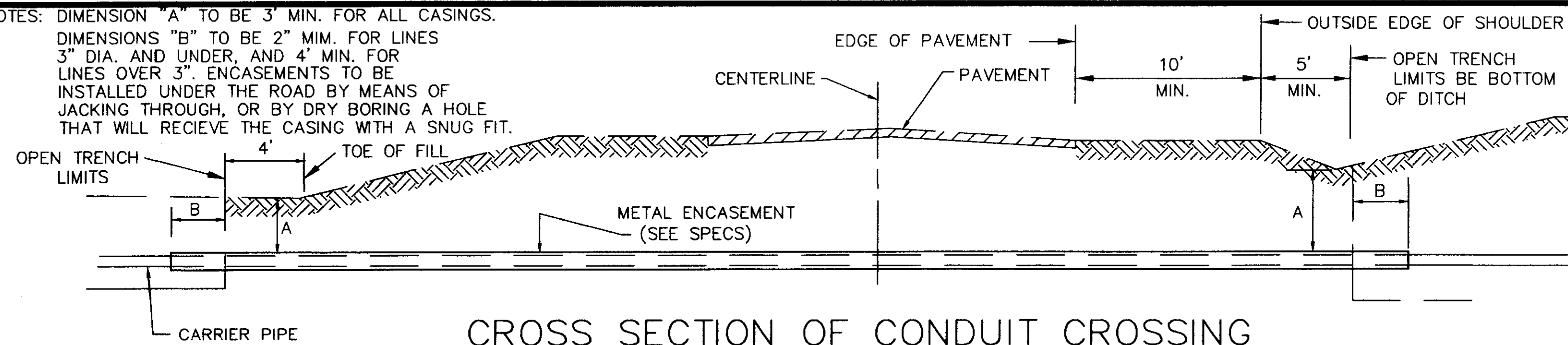
PROJ. MANAGER: _____ DATE: 10-97
 DESIGNER: _____ SCALE: 1"=50' HORIZ. / 1"=5' VERT.
WAGGONER ENGINEERING INC. CONSULTING ENGINEERS
JACKSON, MISSISSIPPI

CITY OF RIDGELAND
S.I.D. SANITARY SEWER MAIN
 ACAD PATH ROUTE: 97060\HCPW
 W.E.I. JOB NO.: 97060 SHEET NO.: 2

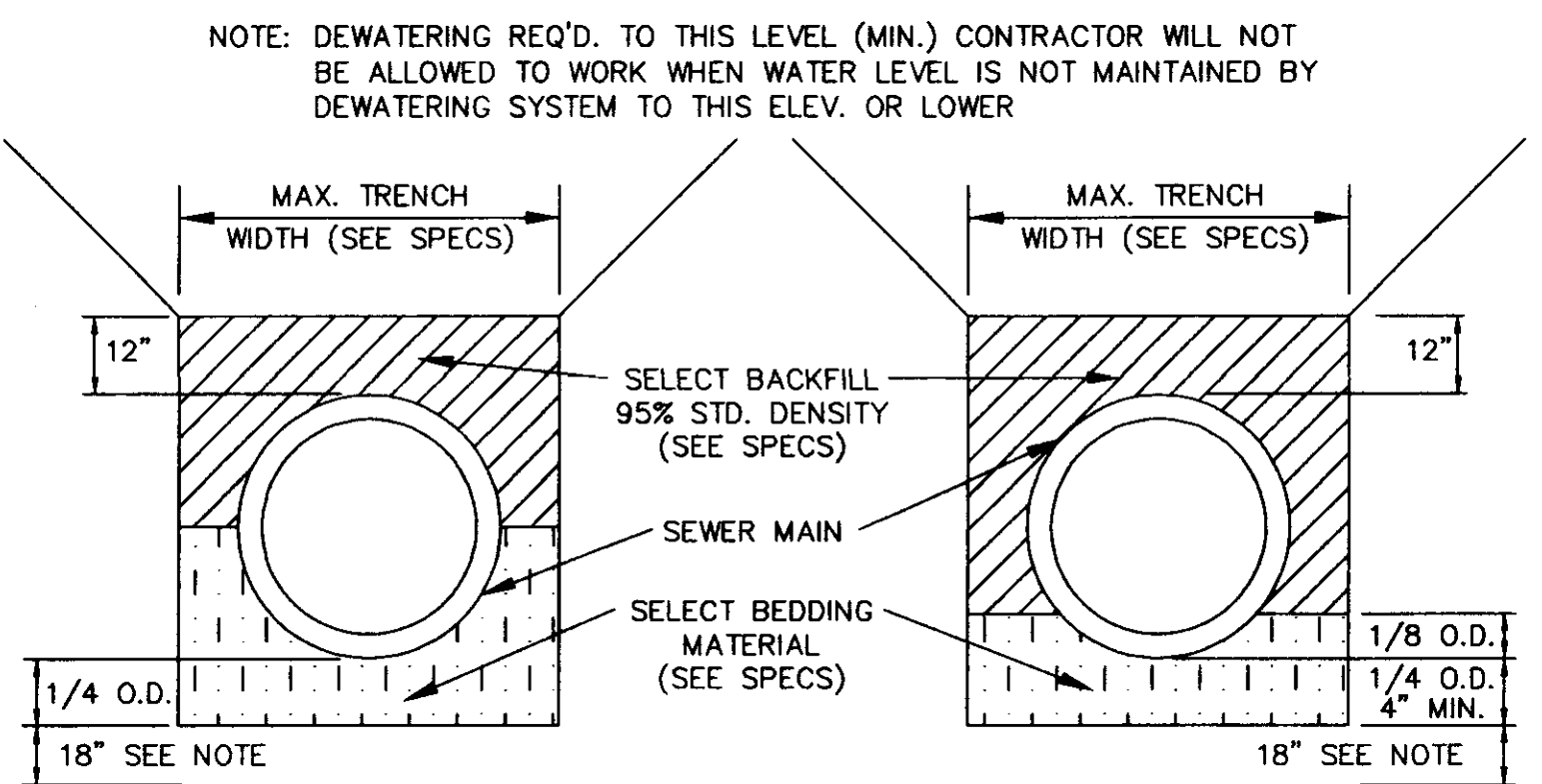
P:\97060\97060\HCP_DP_Reg_Nov_12_18_02_03_1997



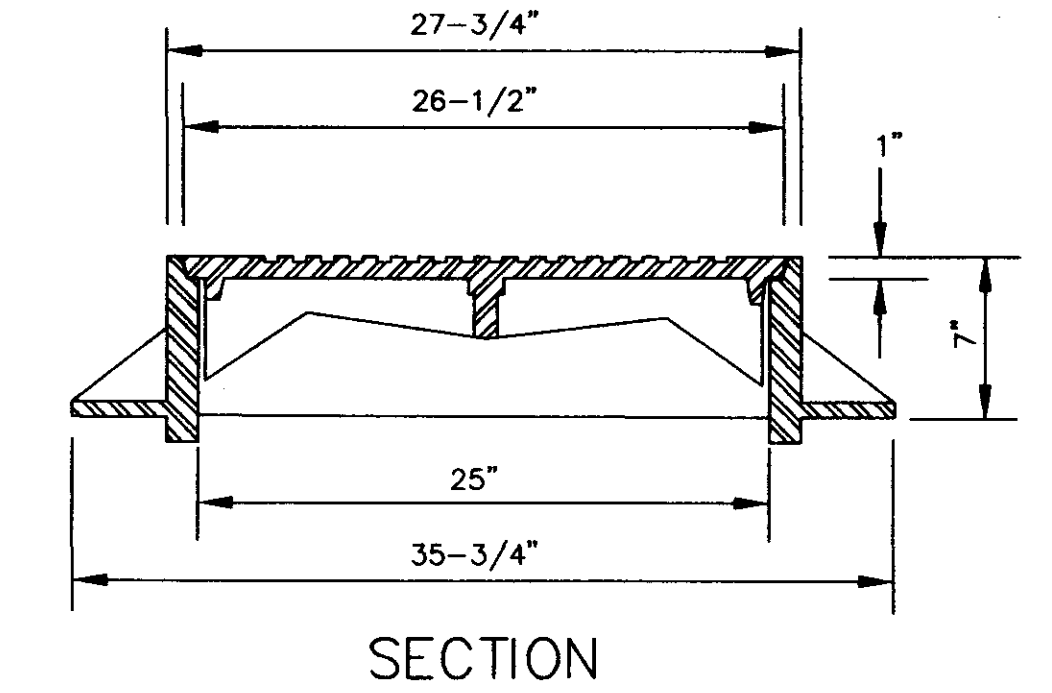
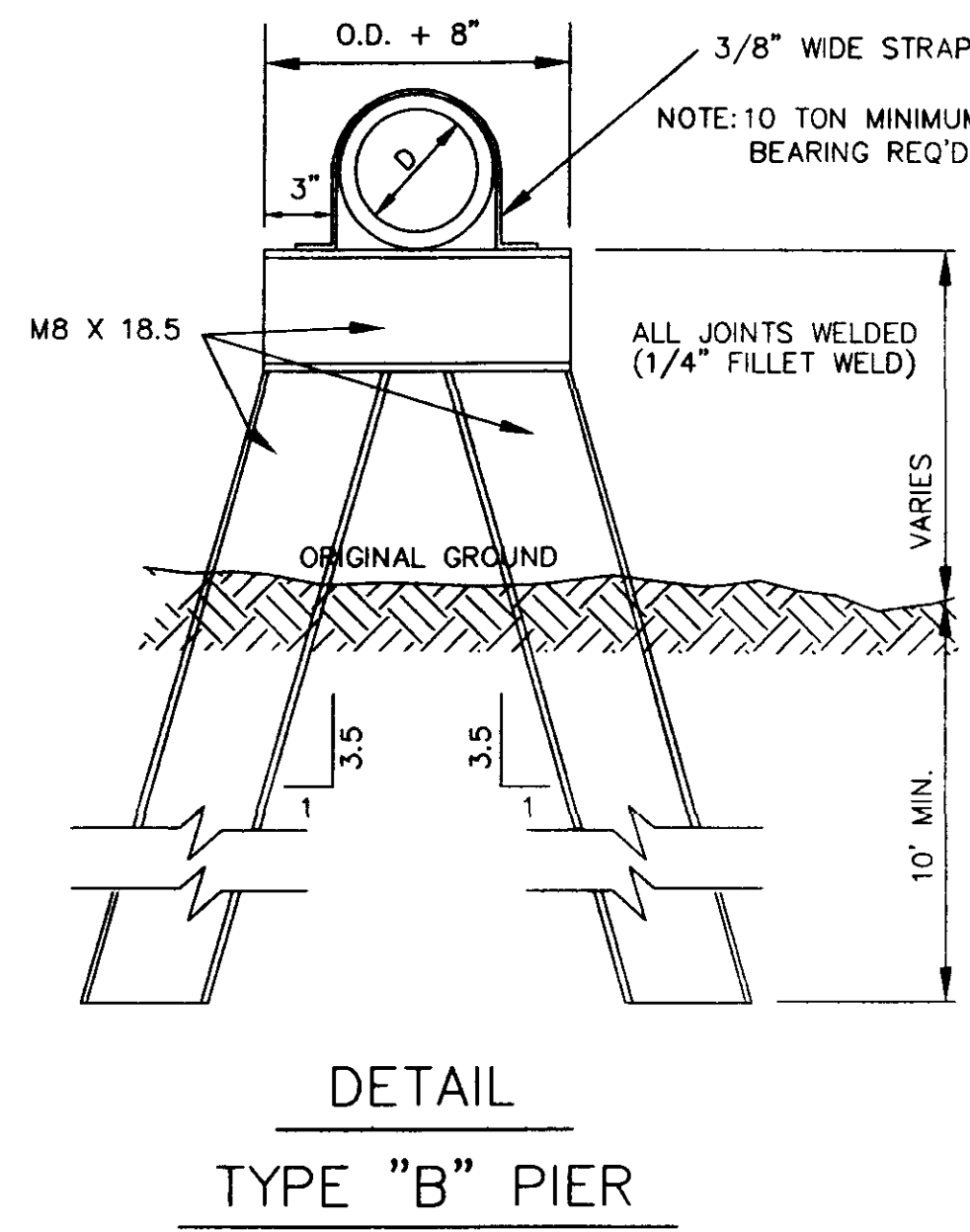
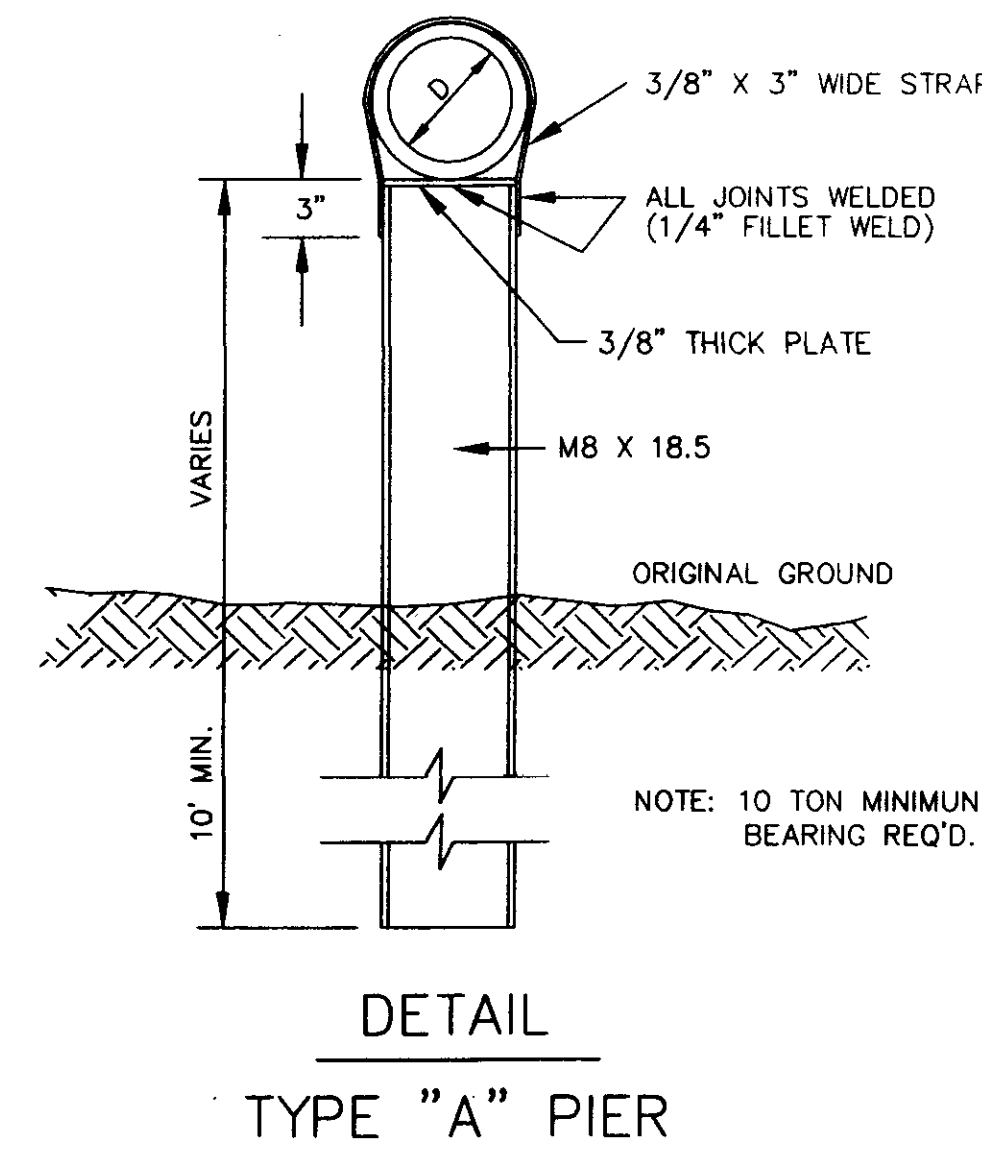
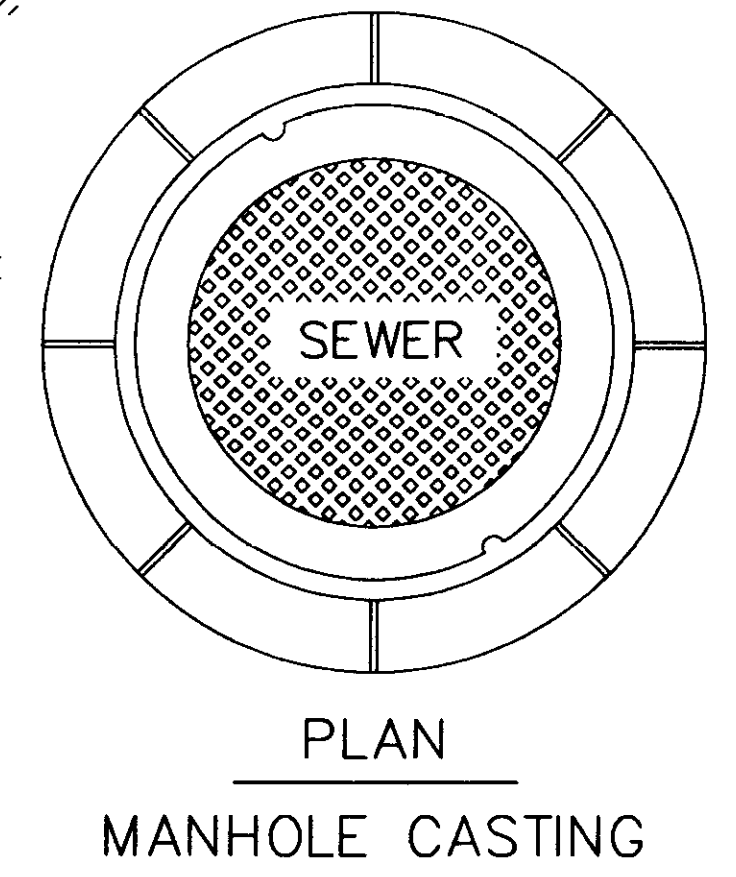
NOTES: DIMENSION "A" TO BE 3" MIN. FOR ALL CASINGS.
 DIMENSIONS "B" TO BE 2" MIN. FOR LINES 3" DIA. AND UNDER, AND 4" MIN. FOR LINES OVER 3". ENCASUREMENTS TO BE INSTALLED UNDER THE ROAD BY MEANS OF JACKING THROUGH, OR BY DRY BORING A HOLE THAT WILL RECEIVE THE CASING WITH A SNUG FIT.



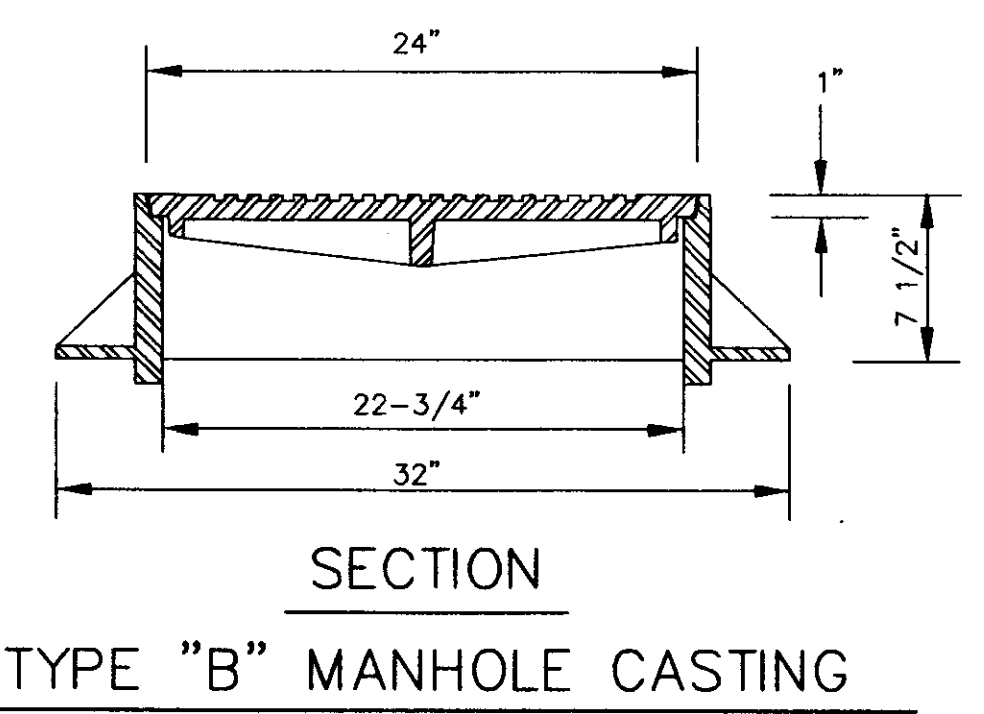
NOTE: CONCRETE GROUT INVERT SURFACES TO HAVE SMOOTH OR BRUSHED FINISH.



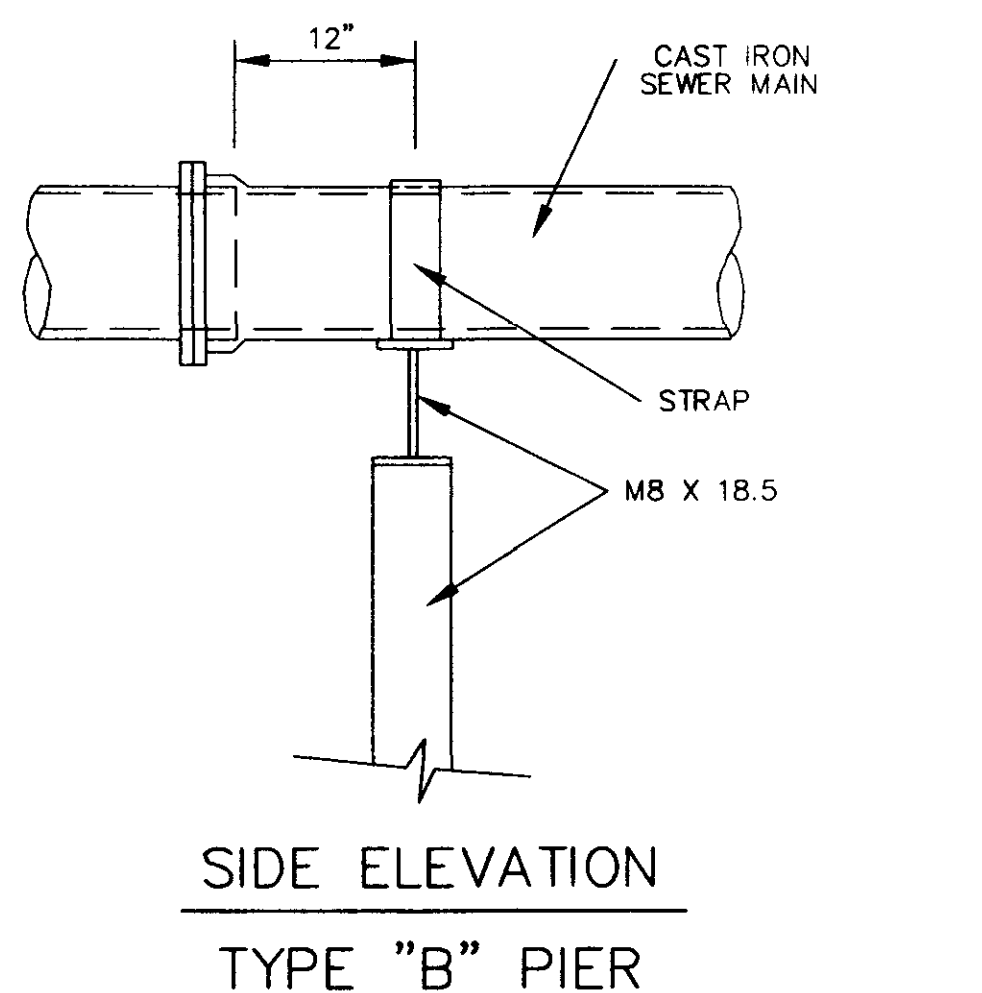
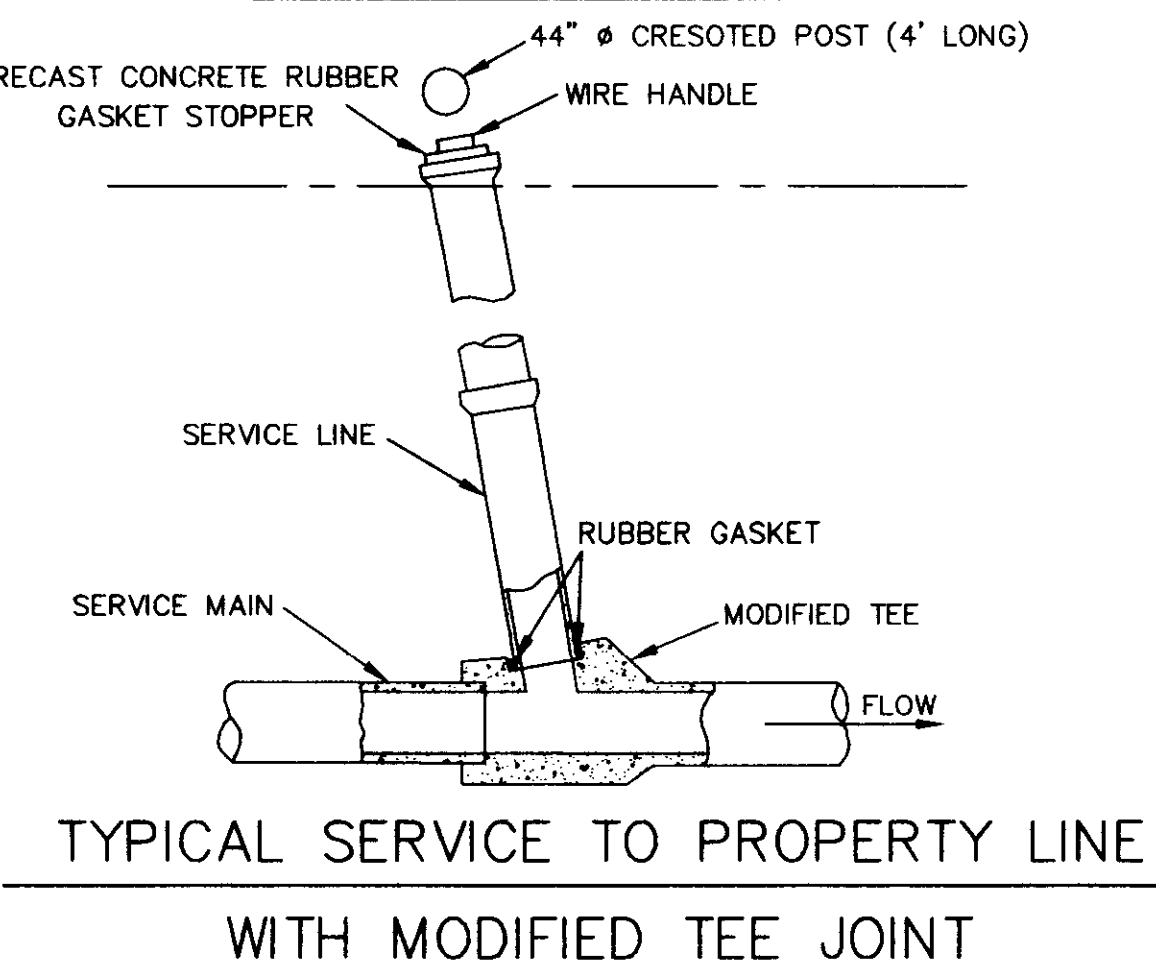
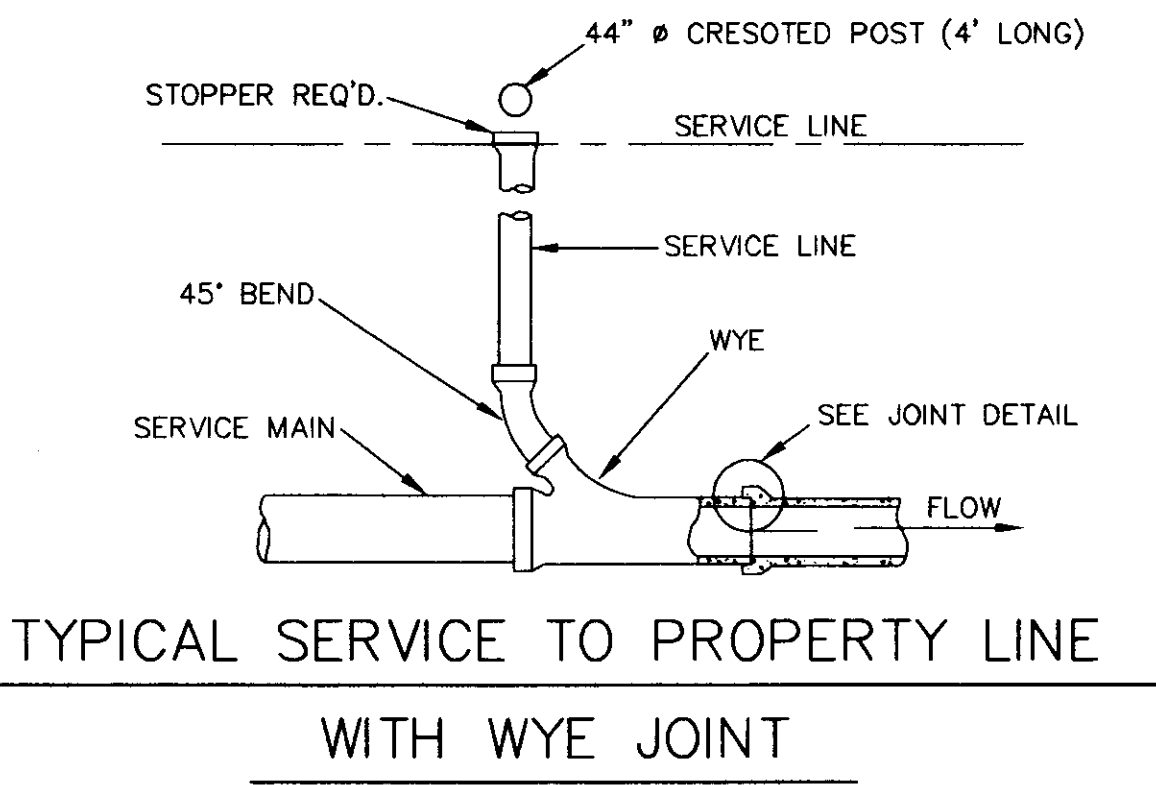
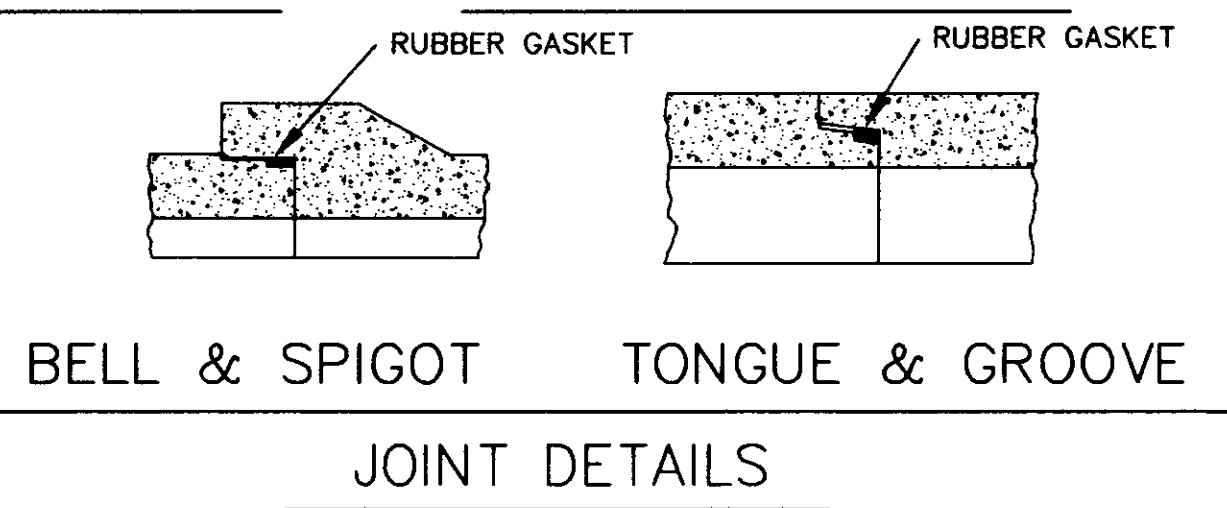
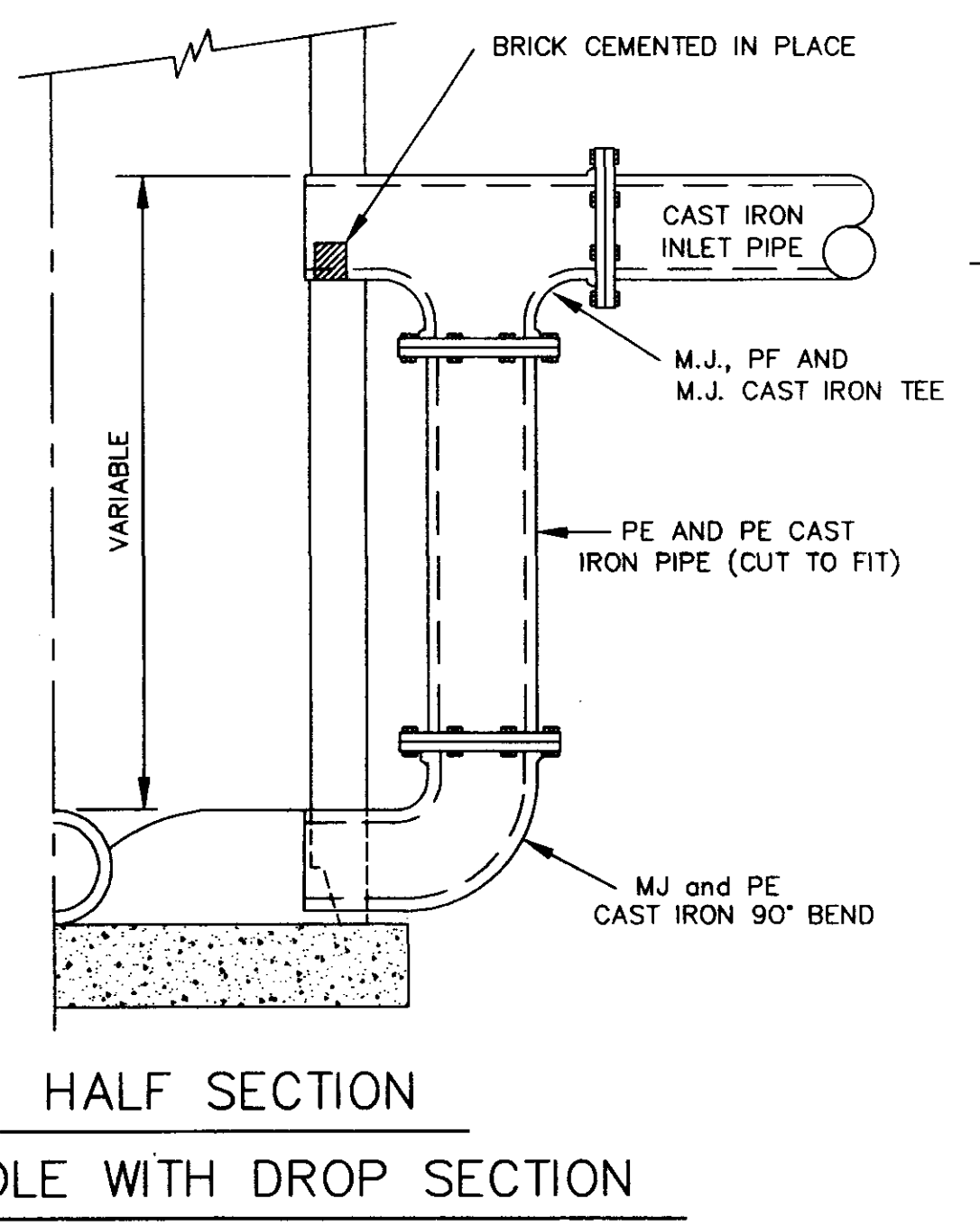
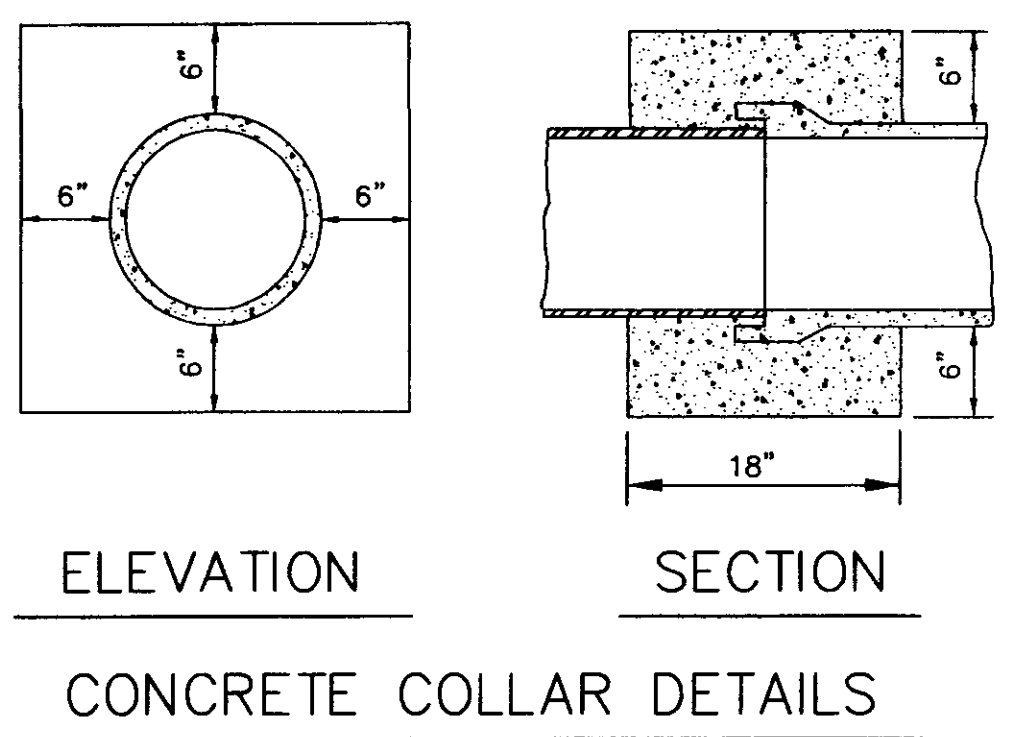
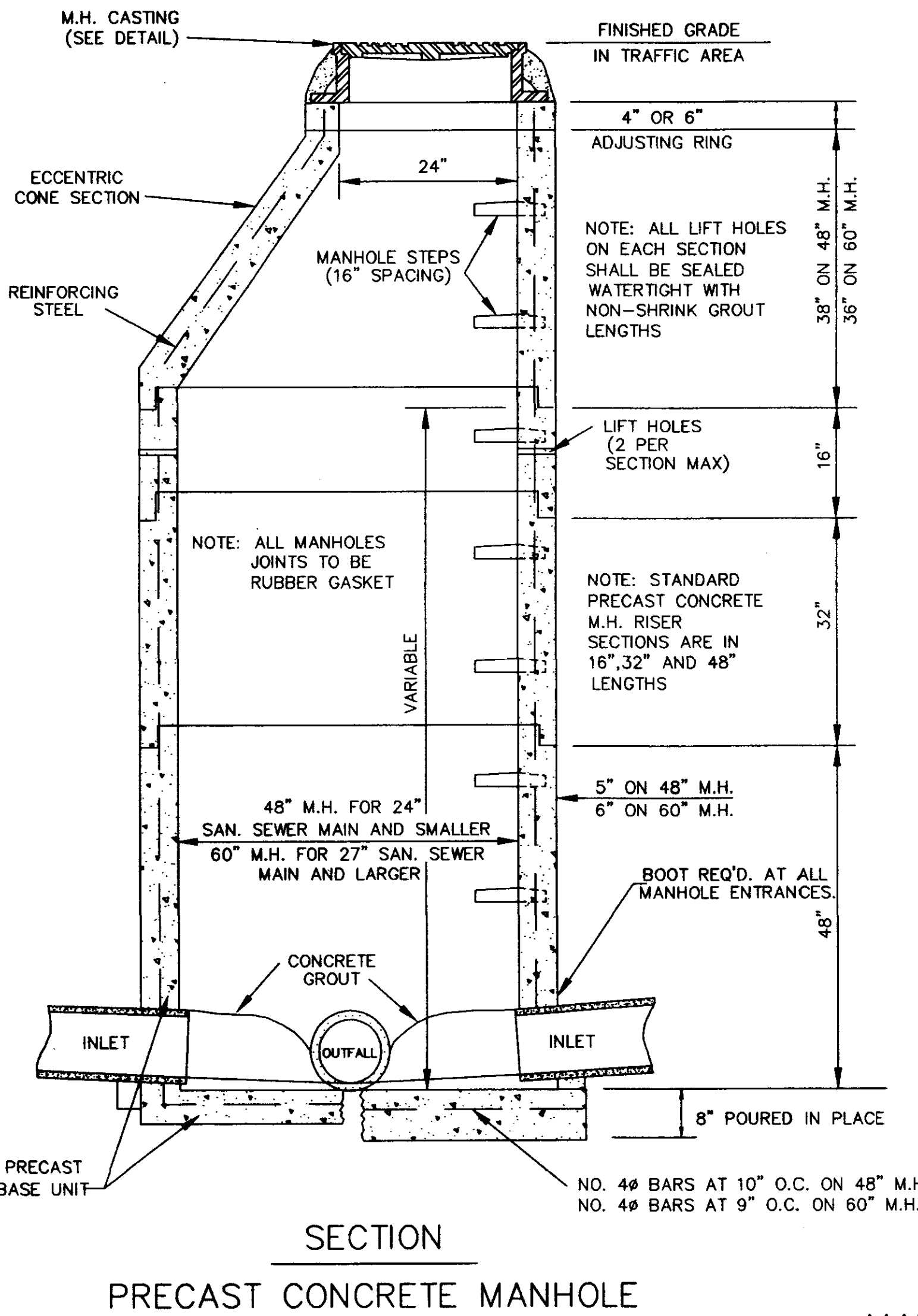
NOTE: DEWATERING REQ'D. TO THIS LEVEL (MIN.) CONTRACTOR WILL NOT BE ALLOWED TO WORK WHEN WATER LEVEL IS NOT MAINTAINED BY DEWATERING SYSTEM TO THIS ELEV. OR LOWER



NOTE: 1. USE TYPE "A" MANHOLE CASTING IN STREET R.O.W.
 2. USE VULCAN NO. VM-8, (440 lbs.)



NOTE: 1. USE TYPE "B" MANHOLE CASTING FOR ANY MANHOLE NOT IN A STREET R.O.W.
 2. VULCAN NO. VM-7 (300 LBS.) OR NEENAH NO. R-1779 (300 LBS.)



S.I.D. SEWER EXTENSION		
SEWER DETAILS		
CITY OF RIDGLAND, MISSISSIPPI		
WAGGONER ENGINEERING, INC. Consulting Engineers - Jackson, Mississippi		
DRAWN BY: B.F.	DATE: 11-7-97	WORKING NUMBER
REVIEWED BY: J.B.	SCALE: N.T.S.	SHEET NUMBER 3 OF 3