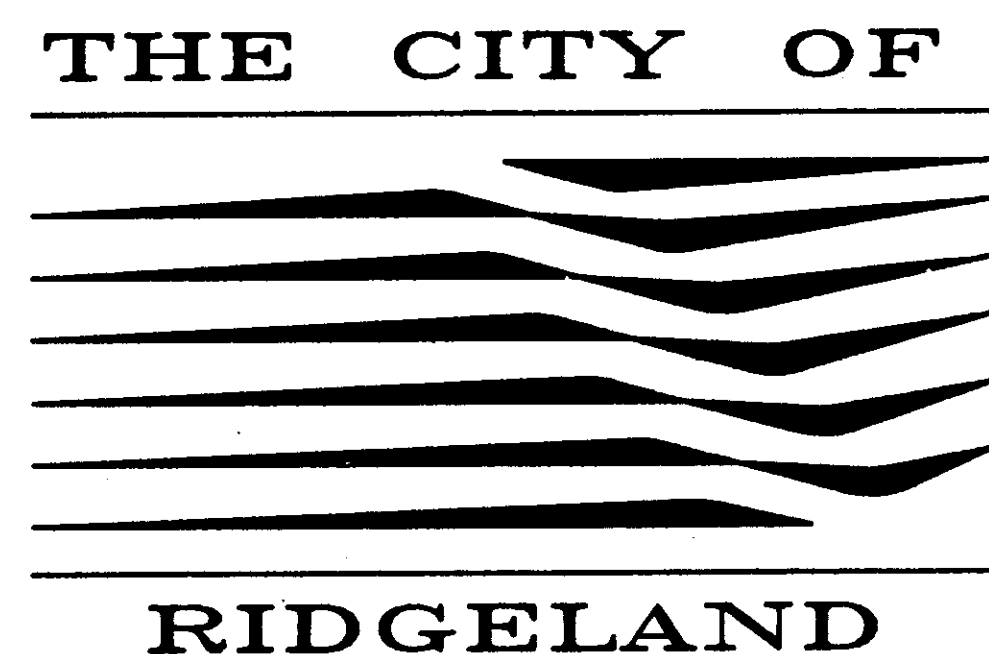


CITY OF RIDGELAND, MISSISSIPPI

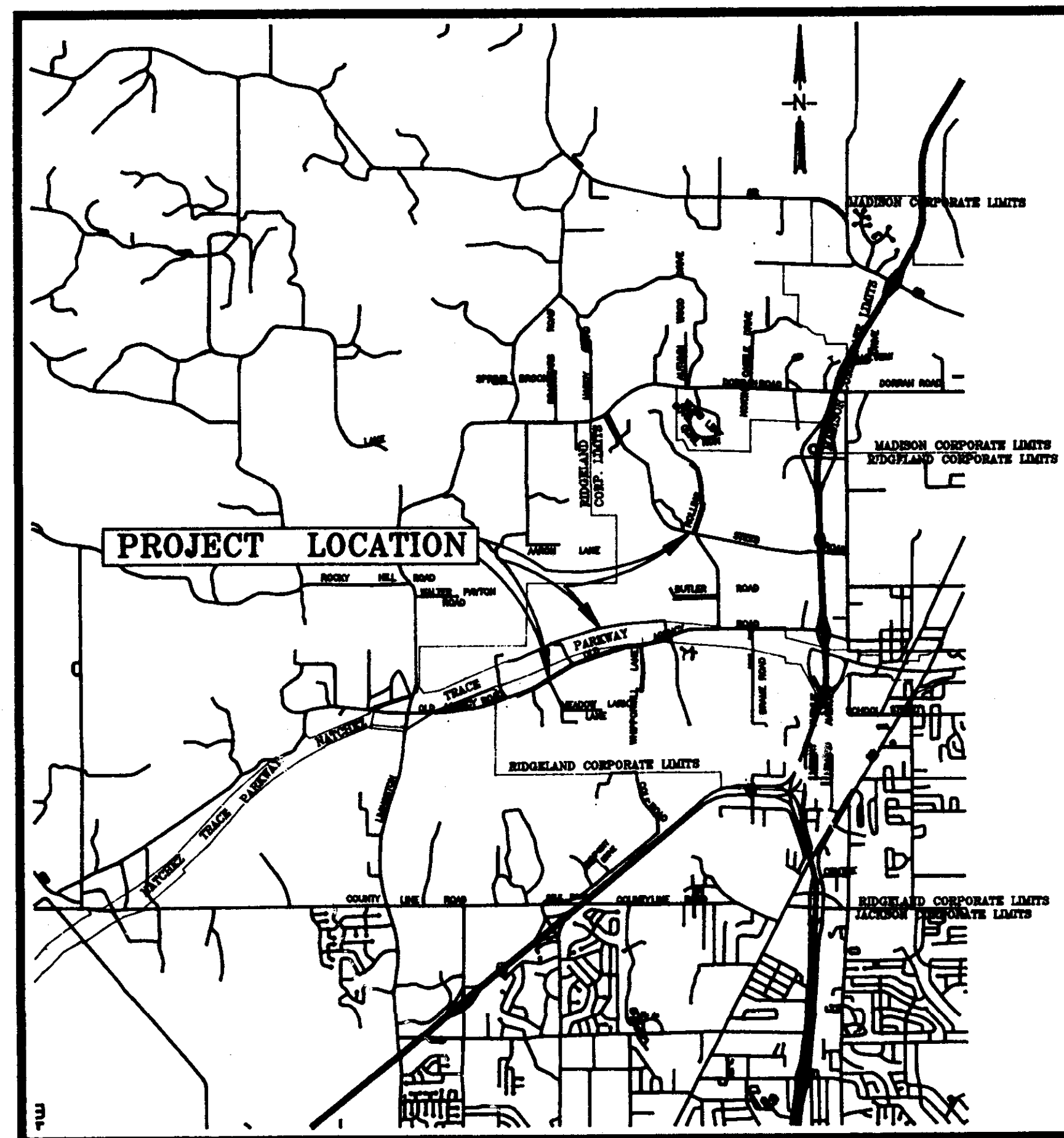
WEST SIDE WATER MAIN IMPROVEMENTS



Mayor:
Gene F. McGee

Mayor Pro Tem:
Harvey Carr, Jr.

City Attorney:
Jerry Mills



VICINITY MAP

JANUARY 1993

WAGGONER ENGINEERING, INC.
CONSULTING ENGINEERS

Jackson / Brandon / Pascagoula, Mississippi

Aldermen:

Brian Barcellona
Al Bible
Harvey Carr, Jr.
Linda Davis
Daryl Smith

Public Works Director:
Sam Vinson, P.E.

Asst. Public Works Director:
Sid Hawthorne

City Clerk:
Michael McPhearson

Fire Chief:
Elmer Waits

Police Chief:
Charles Newell

PWP-05023

INDEX TO DRAWINGS	
SHEET NO.	TITLE
	TITLE SHEET
1	LOCATION MAP, SHEET INDEX & GENERAL CONSTRUCTION NOTES
2 & 3	PLAN-SHEET (LINE "A") 12" ALONG NATCHEZ TRACE R.O.W.
4	PLAN-SHEET (LINE "B") 8" ALONG OLD AGENCY ROAD
5	PLAN-SHEET (LINE "C") 12" TO DINSMOR SUBDIVISION
6	PLAN-SHEET 8" ALONG ROLLING MEADOW DRIVE
7	PLAN-SHEET 8" ALONG BUTLER ROAD & WHIPPORWILL LANE
8	WATER STANDARD DETAIL SHEET

- GENERAL CONSTRUCTION NOTES
- Any existing utility locations shown on plans are approximate only. The Contractor shall coordinate the location (horizontal and vertical) of any existing utilities (power, telephone, gas, water, sewer, etc.) with the appropriate utility company before construction begins.
 - Any utility line or service line encountered during construction, whether shown on plans or not, shall be protected by the Contractor and any repairs necessary due to damage to same by the Contractor shall be at no additional cost to the Owner.
 - The Contractor shall be responsible for verifying horizontal and vertical clearances on any utility service crossings required before installation.
 - The Contractor shall fertilize and seed all areas where the existing vegetation was removed or disturbed during construction and not required to be solid sodded, paved, or graded.
 - Unsuitable bedding, backfill or site subgrade material which may be encountered shall be excavated to the limits required and backfilled with acceptable material to the lines and grades shown on the plans.
 - Any TBM's which are or may be in conflict with construction activities shall be relocated by Engineer prior to commencement of construction in the immediate area.
 - All detailed construction staking will be by Contractor at no cost to the Owner.
 - The Contractor shall be responsible for completing all sampling and testing of materials incorporated into the project and for submission of same to Engineer for review. Prior use test results, manufacturer's certificates, or proposed mix designs shall be submitted to the Engineer for review before incorporation into project. This shall include backfill, concrete, asphalt, steel, paint, piping, fencing materials, aggregates, seed and other items as specified by the Engineer. All testing shall be an absorbed cost item.
 - All testing certifications shall state that the subject material meets the specified quality, grade, purity, class or weight, or that the subject material meets or exceeds the requirement of the applicable ASTM, AASHTO, MSHD or other standards. Certifications shall be submitted to the Engineer prior to incorporation of the subject material into the project.
 - Out zones for storm sewer, if so indicated on the Bid Form, shall be measured from the original ground profile or proposed grade, whichever is less.
 - The Contractor shall repair or replace fences that are damaged, removed or otherwise disturbed during construction. Fences shall be restored to their original condition or better using the same types of material, wire, boards, chain link, pipe, etc. as used for original construction.
 - The Contractor shall repair roadways, driveways, sidewalks, yard surfaces, curb and gutter sections, etc., disturbed during construction. Repairs shall be made by using the types of material used during original construction and to the complete satisfaction of the Owner and Engineer.
 - The Contractor shall protect trees, shrubbery, flowers, sod and other vegetation, not specified for removal by Drawings or Specifications, and shall repair or replace such items as are damaged during construction of project with the same types and quality as those that are damaged. Such repair or replacement shall be to the satisfaction of the Engineer and the Owner of the property involved.
 - The repair or replacement of items not listed on the Bid Form for separate payment, shall be considered as incidental to the project and the cost for such items shall be included in the unit price bid for Clearing and Grubbing.

CITY OF RIDGELAND, MISSISSIPPI

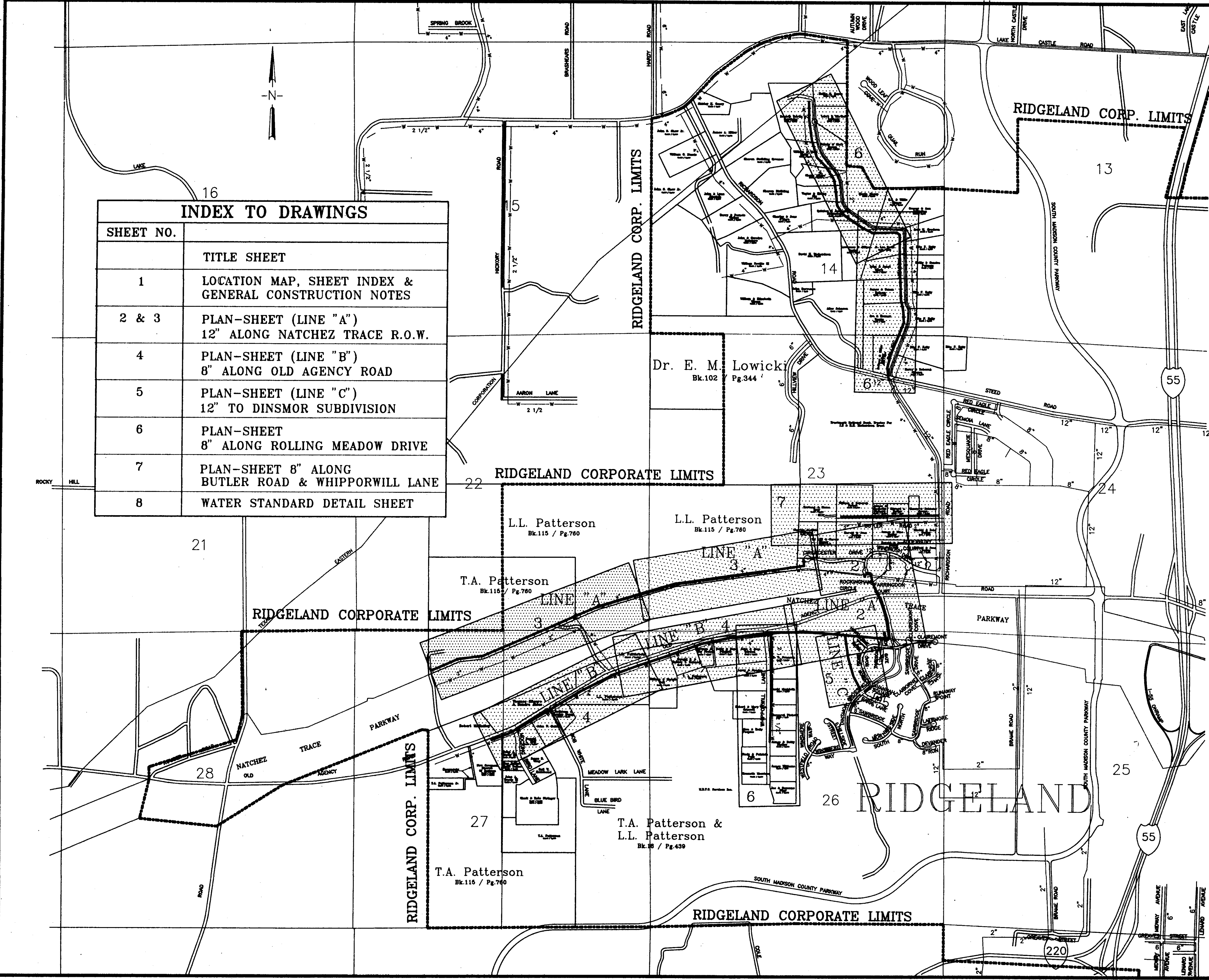
WEST WATER LINES

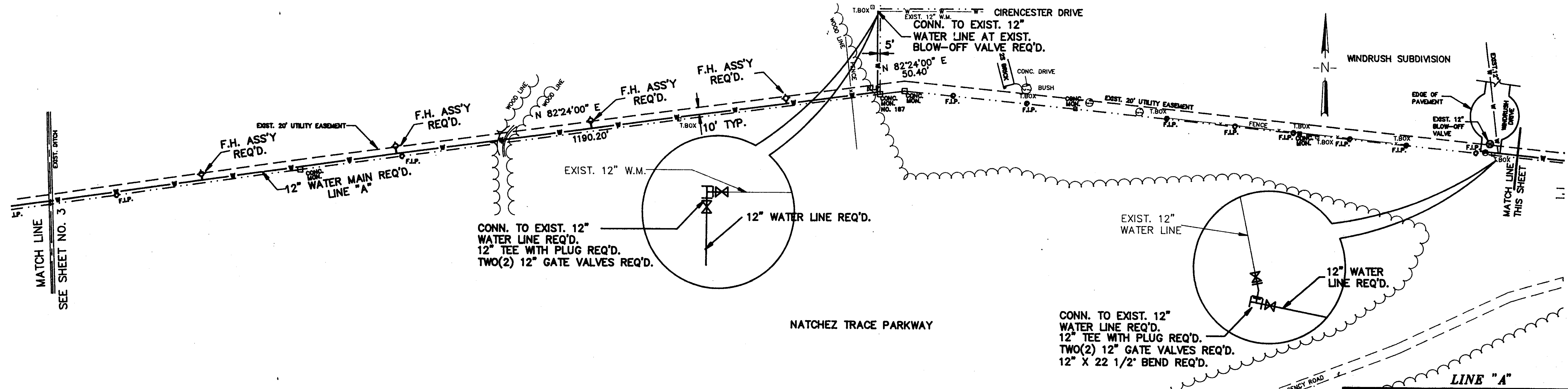
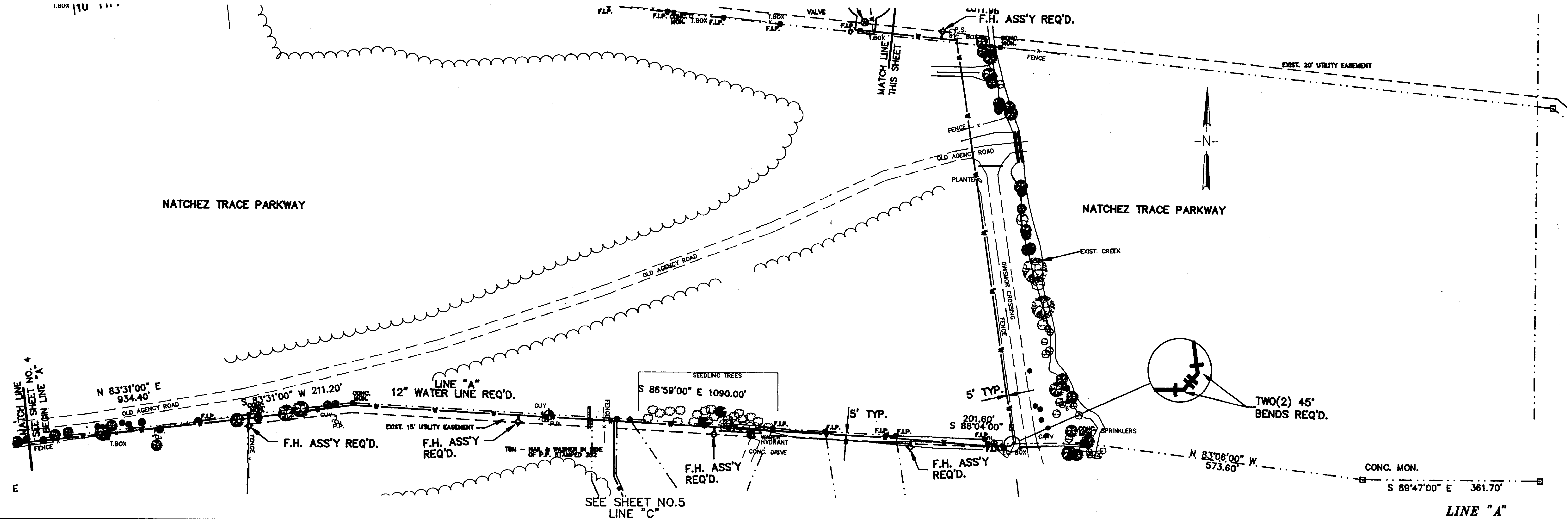
LOCATION MAP, SHEET INDEX & GENERAL CONSTRUCTION NOTES

WAGGONER ENGINEERING, INC.
Consulting Engineers - Jackson, Mississippi

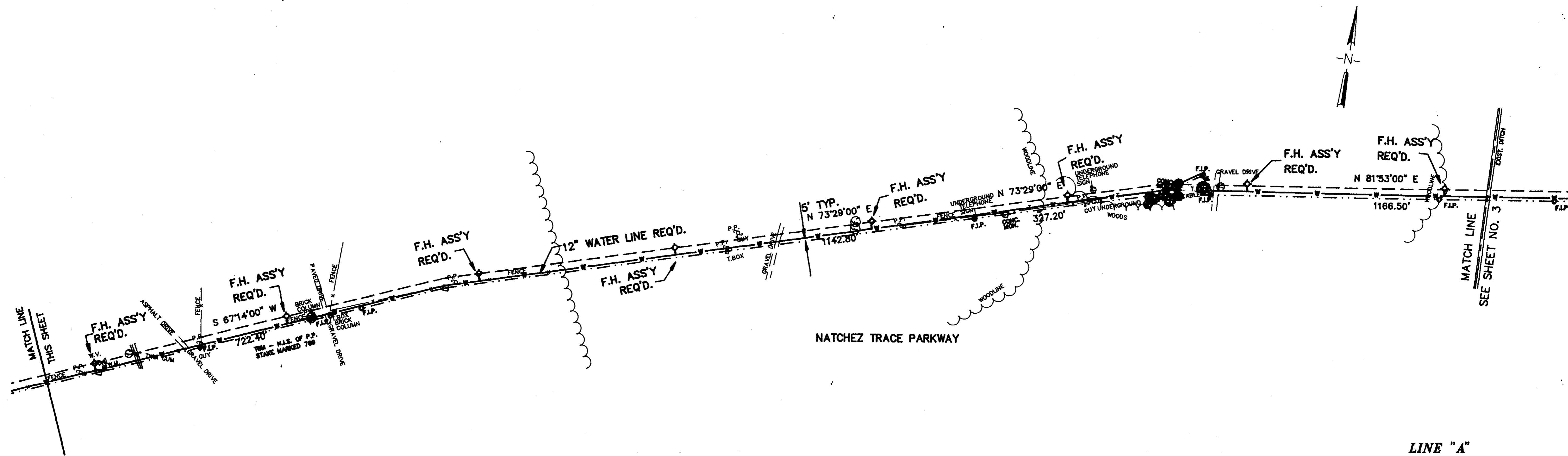
DRAWN BY: C.S.	DATE: 5-12-93	SHEET NUMBER
REVIEWED BY: W.L.M.	SCALE: 1"=80'	1 OF 8

© VERNE P. 00014 V

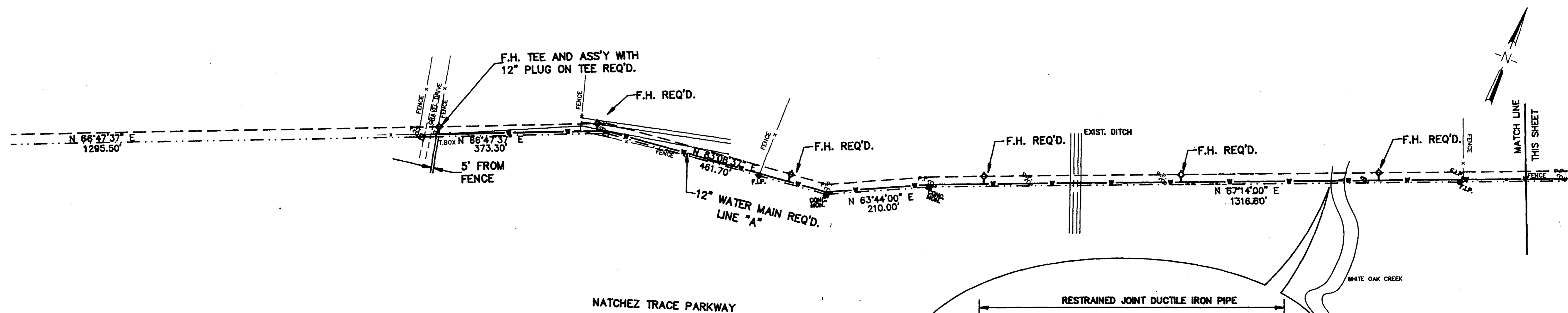




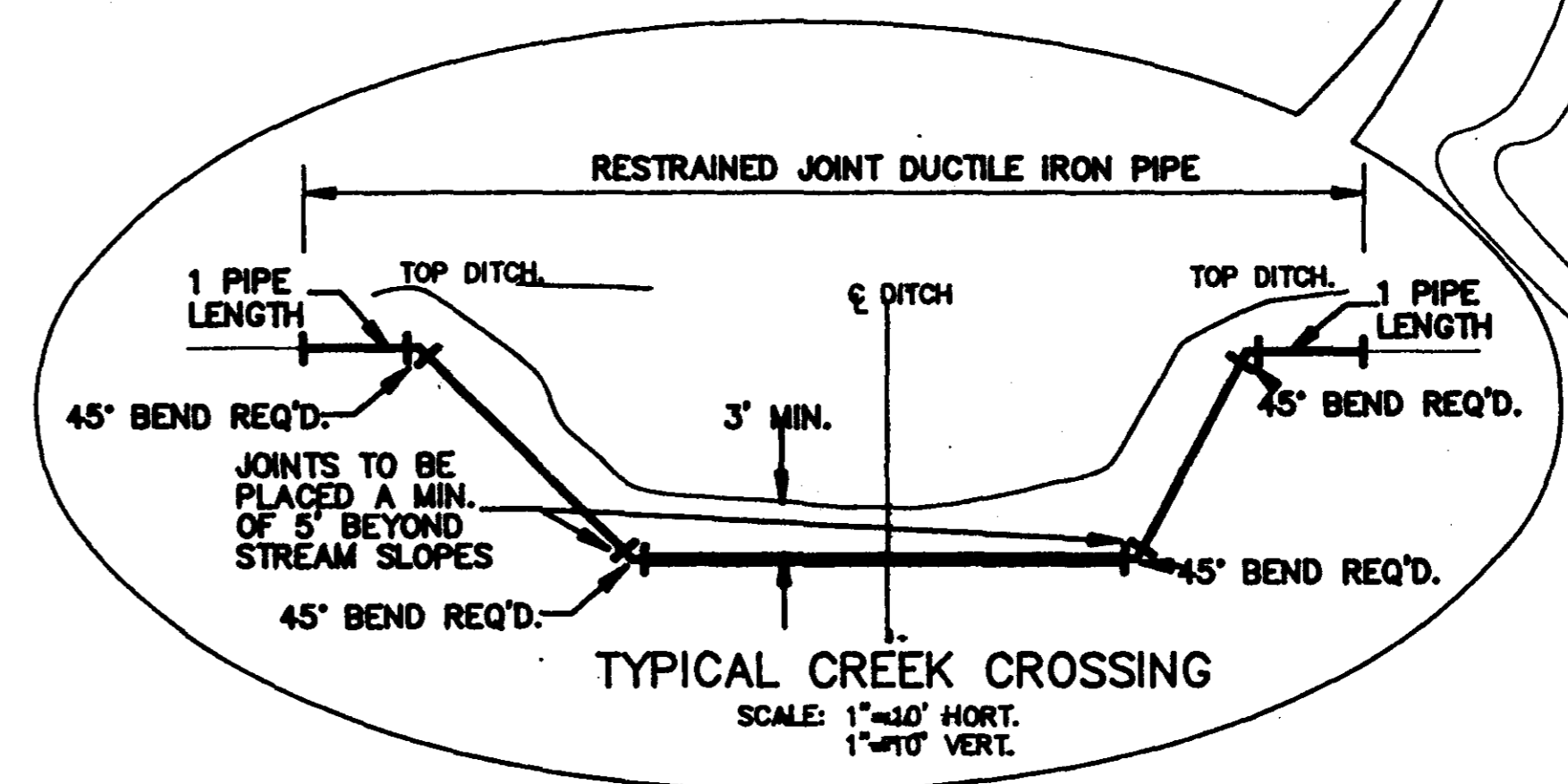
CITY OF RIDGLAND WEST WATER LINES		
12\"/> 		
WAGGONER ENGINEERING, INC. Consulting Engineers - Jackson, Mississippi		
DRAWN BY: C.S.	DATE: 6-12-1993	SHEET NUMBER
REVIEWED BY: W.L.M.	SCALE: 1"=100'	2 OF 8



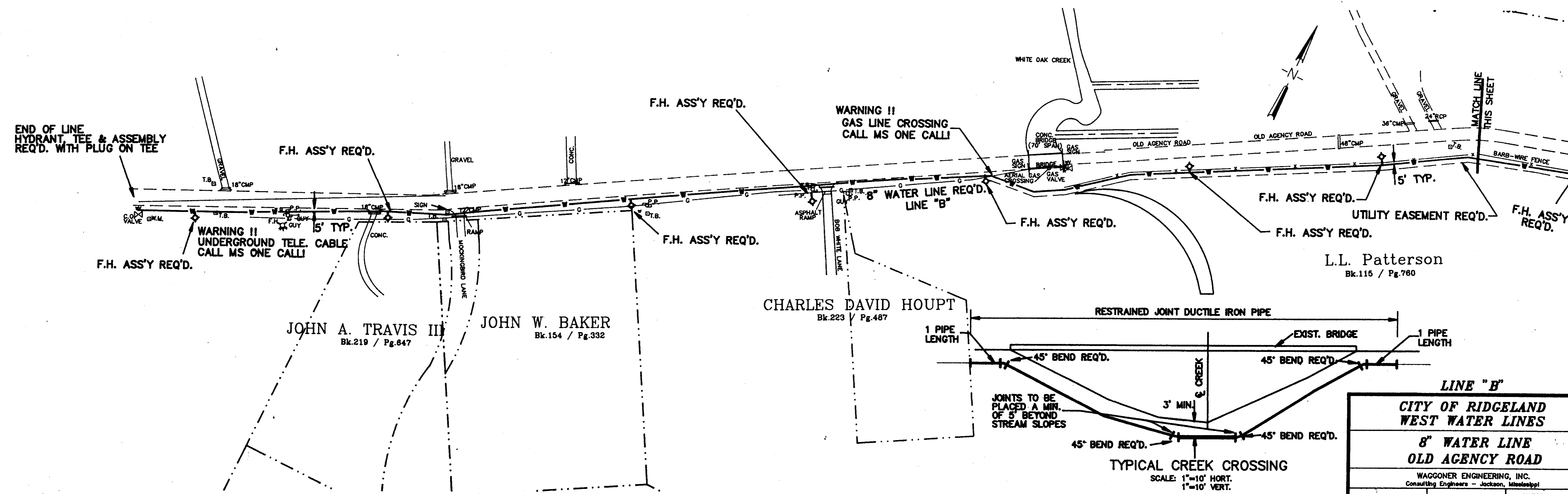
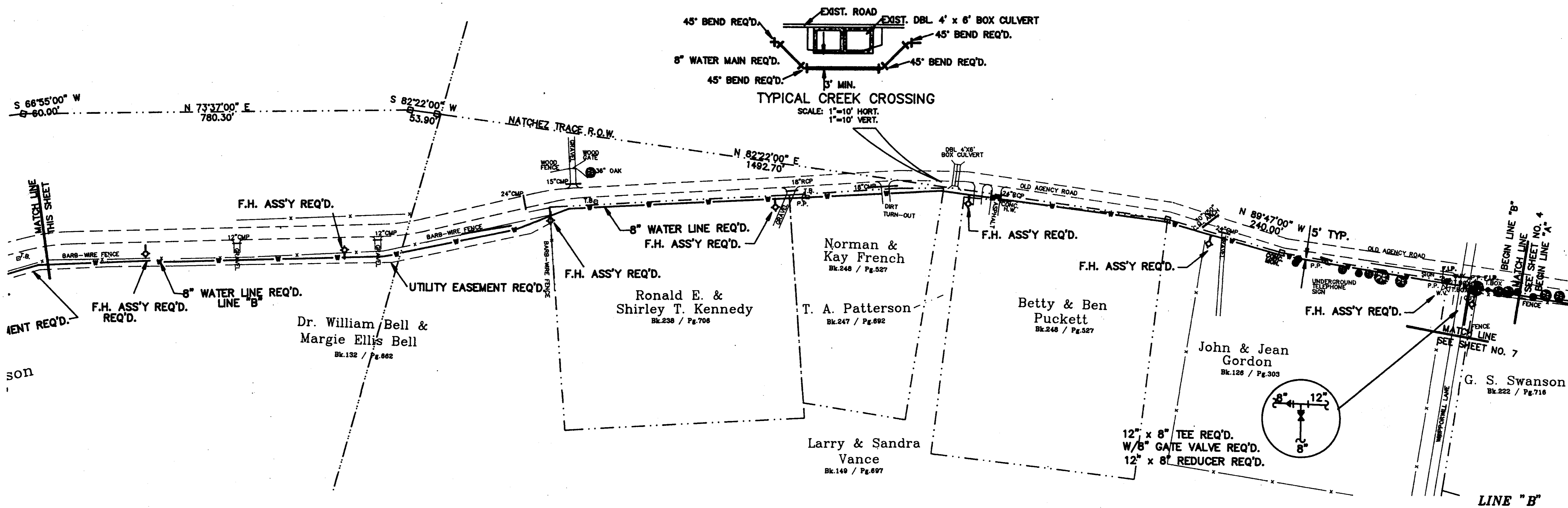
LINE "A"



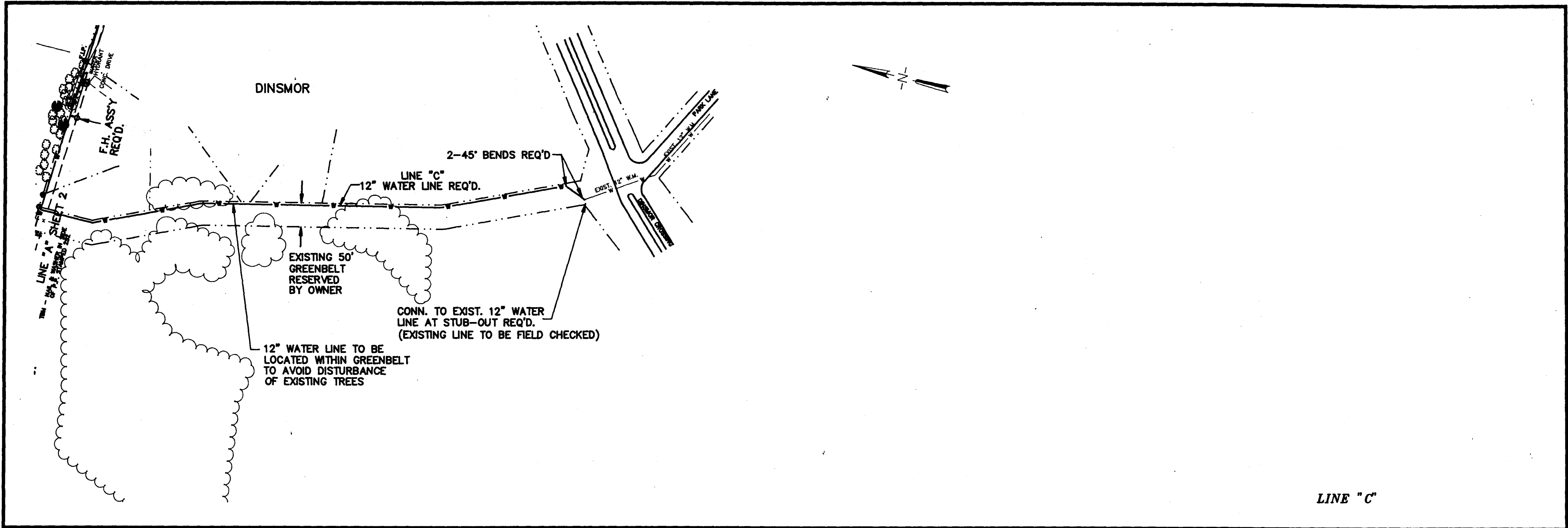
LINE "A"



CITY OF RIDGELAND WEST WATER LINES		
12" WATER LINE NORTH NATCHEZ TRACE R.O.W.		
WAGGONER ENGINEERING, INC. Consulting Engineers - Jackson, Mississippi		
DRAWN BY: C.S.	DATE: 6-12-1963	SHEET NUMBER
REVIEWED BY: M.L.L.	SCALE: 1"=10'	3 OF 8



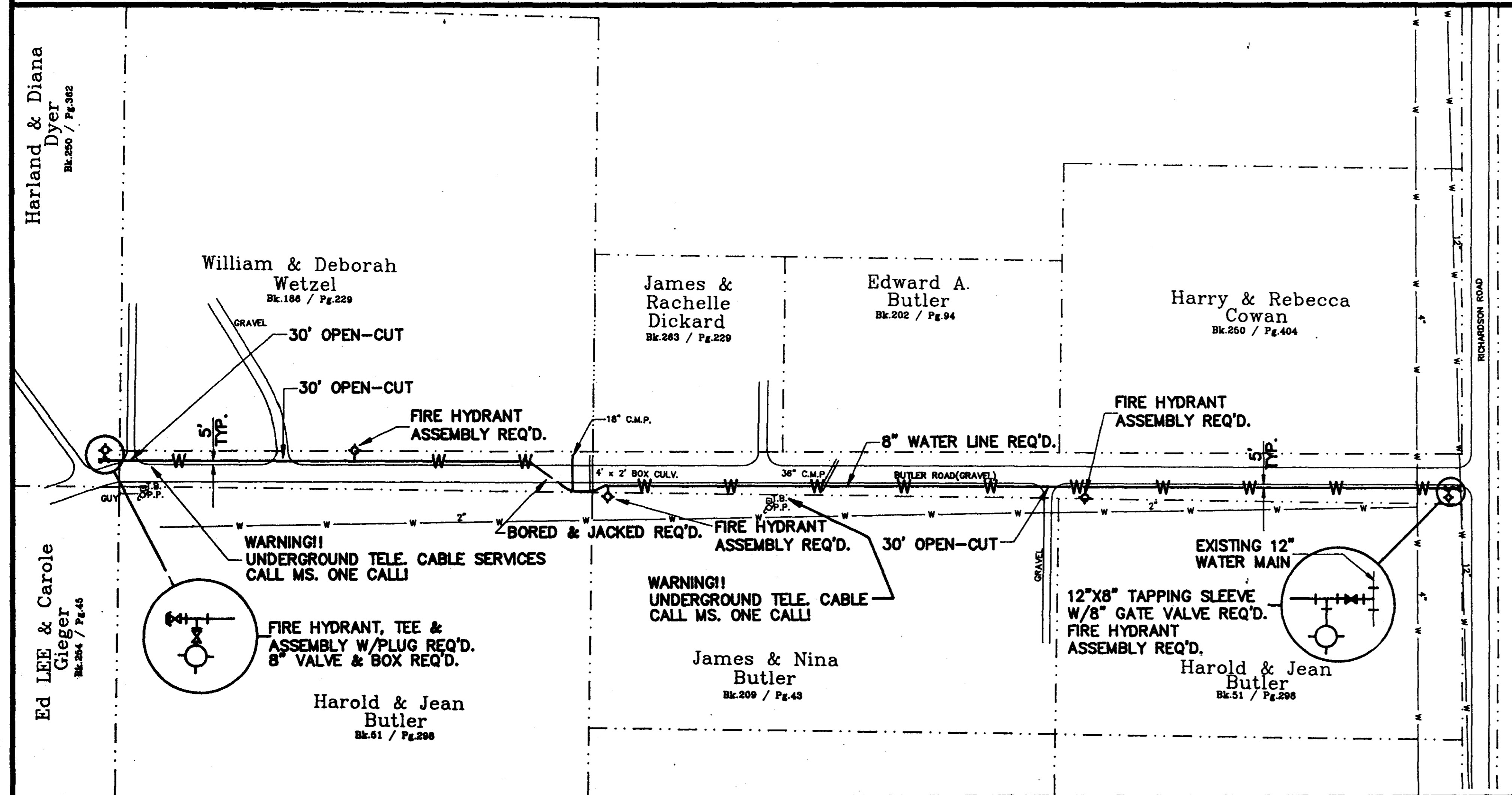
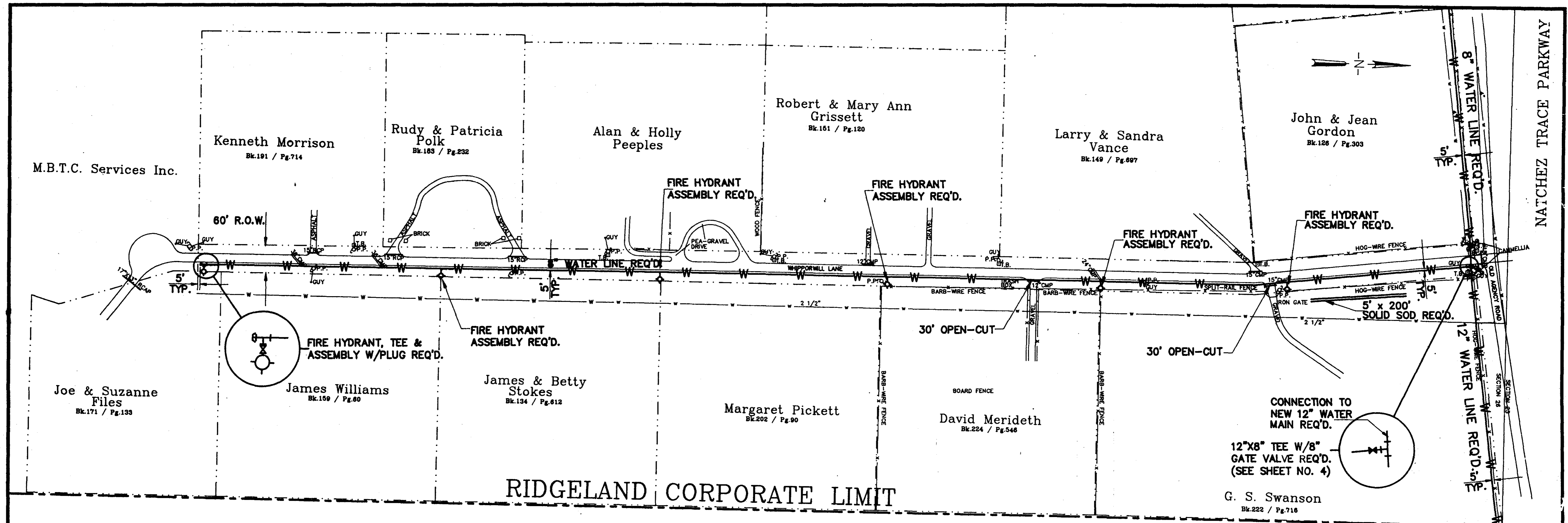
LINE "B"		
CITY OF RIDGELAND WEST WATER LINES		
8" WATER LINE OLD AGENCY ROAD		
<small>WAGGONER ENGINEERING, INC. Consulting Engineers - Jackson, Mississippi</small>		
<small>DRAWN BY: C.S.</small>	<small>DATE: 6-12-1993</small>	<small>SHEET NUMBER</small>
<small>REVIEWED BY: T.L.M.</small>	<small>SCALE: 1"=10'</small>	4 OF 8



LINE "C"

CITY OF RIDGELAND WEST WATER LINES		
12" WATER LINE TO DINSMOR SUBDIVISION		
<small>WAGGONER ENGINEERING, INC. Consulting Engineers - Jackson, Mississippi</small>		
<small>DRAWN BY: C.E.</small>	<small>DATE: 5-13-1993</small>	<small>SHEET NUMBER</small>
<small>REVIEWED BY: M.L.L.</small>	<small>SCALE: 1"=100'</small>	5 OF 8

C:\ERHIE\1\0014\W-WATER(PLOTS)



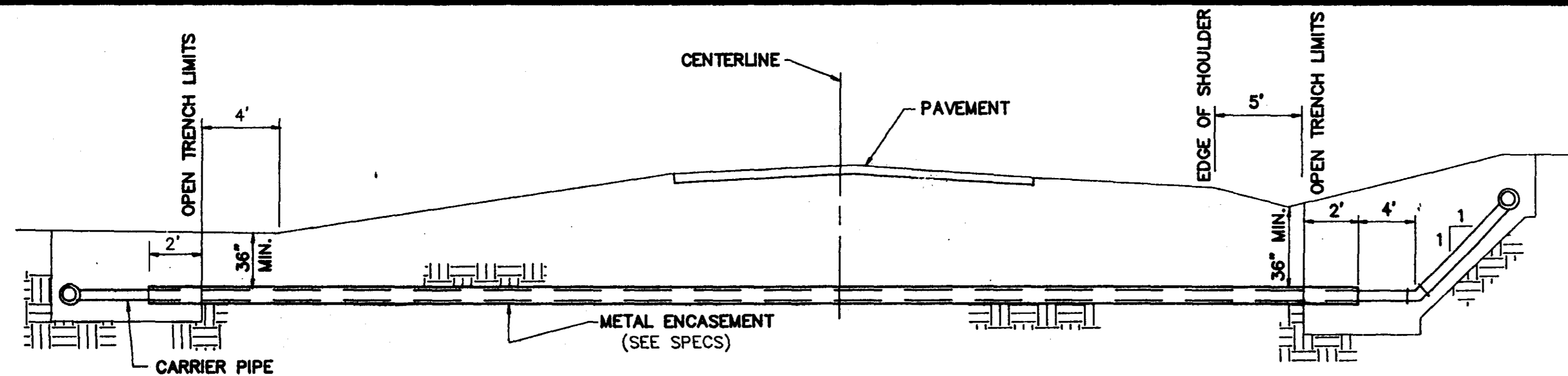
RIDGELAND CORPORATE LIMITS

**CITY OF RIDGELAND
WEST WATER LINES**

**8" WATER LINE ON
BUTLER ROAD &
WHIPPORWILL LANE**

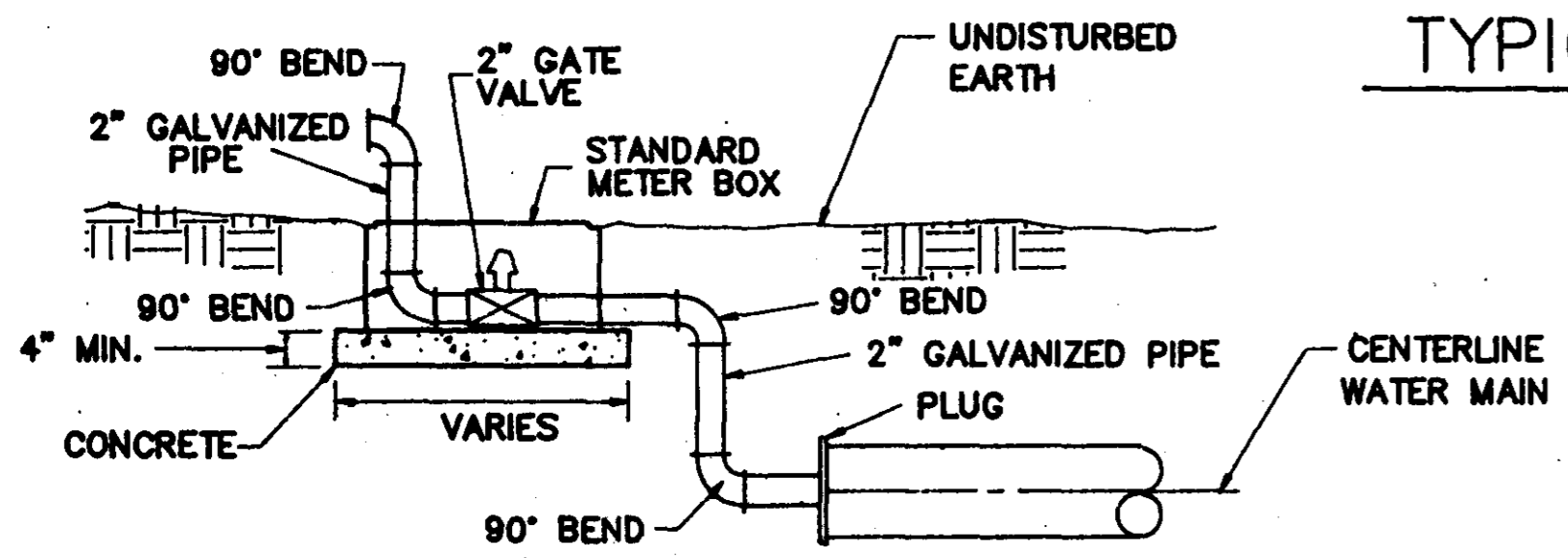
WAGGONER ENGINEERING, INC.
Consulting Engineers - Jackson, Mississippi

DRAWN BY: C.S.	DATE: 5-13-1993	SHEET NUMBER
REVISION BY: W.L.A.	SCALE: 1"=100'	7 OF 8

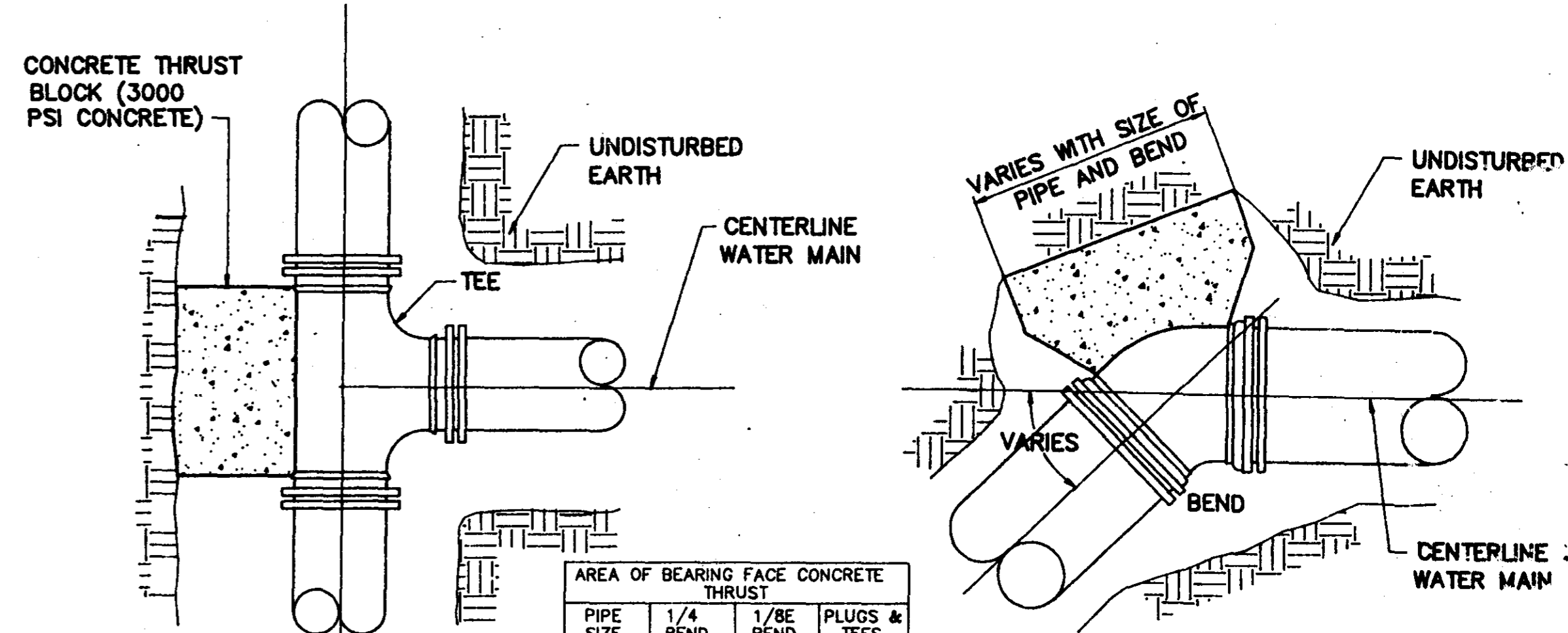


TYPICAL CASSED CROSSING

NOTE: COMPENSATION FOR CONCRETE THRUST BLOCKS SHALL BE INCLUDED IN THE UNIT PRICE BID FOR VALVES, FIRE HYDRANTS AND FITTINGS.



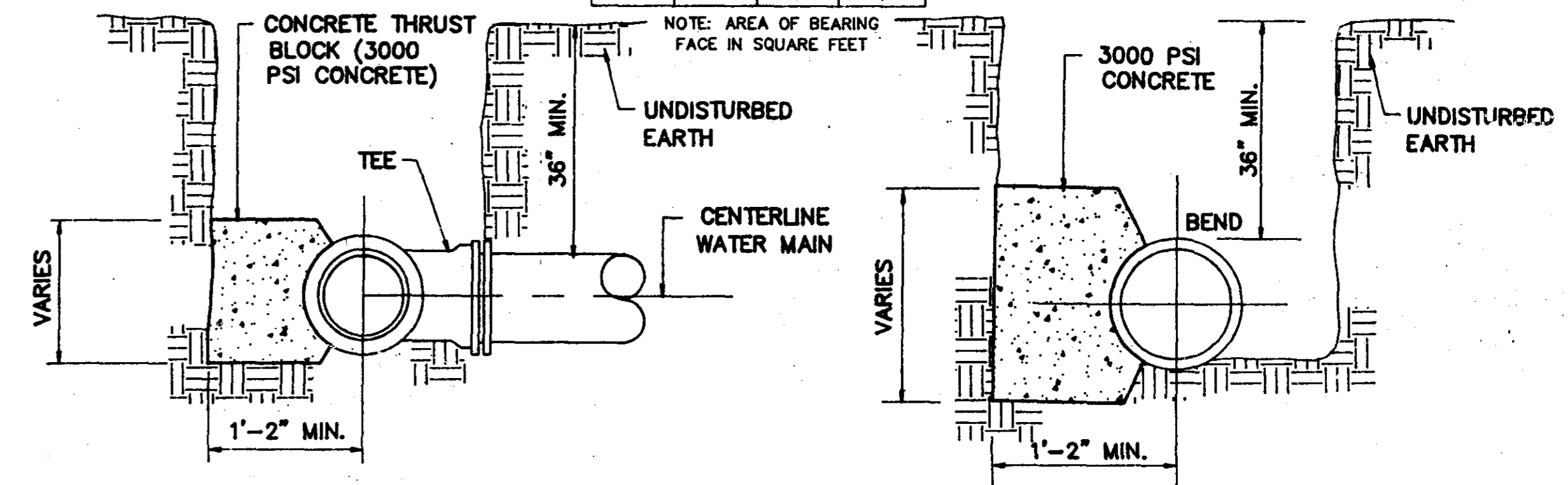
TYPICAL 2" BLOW-OFF DETAIL



PLAN

PLAN

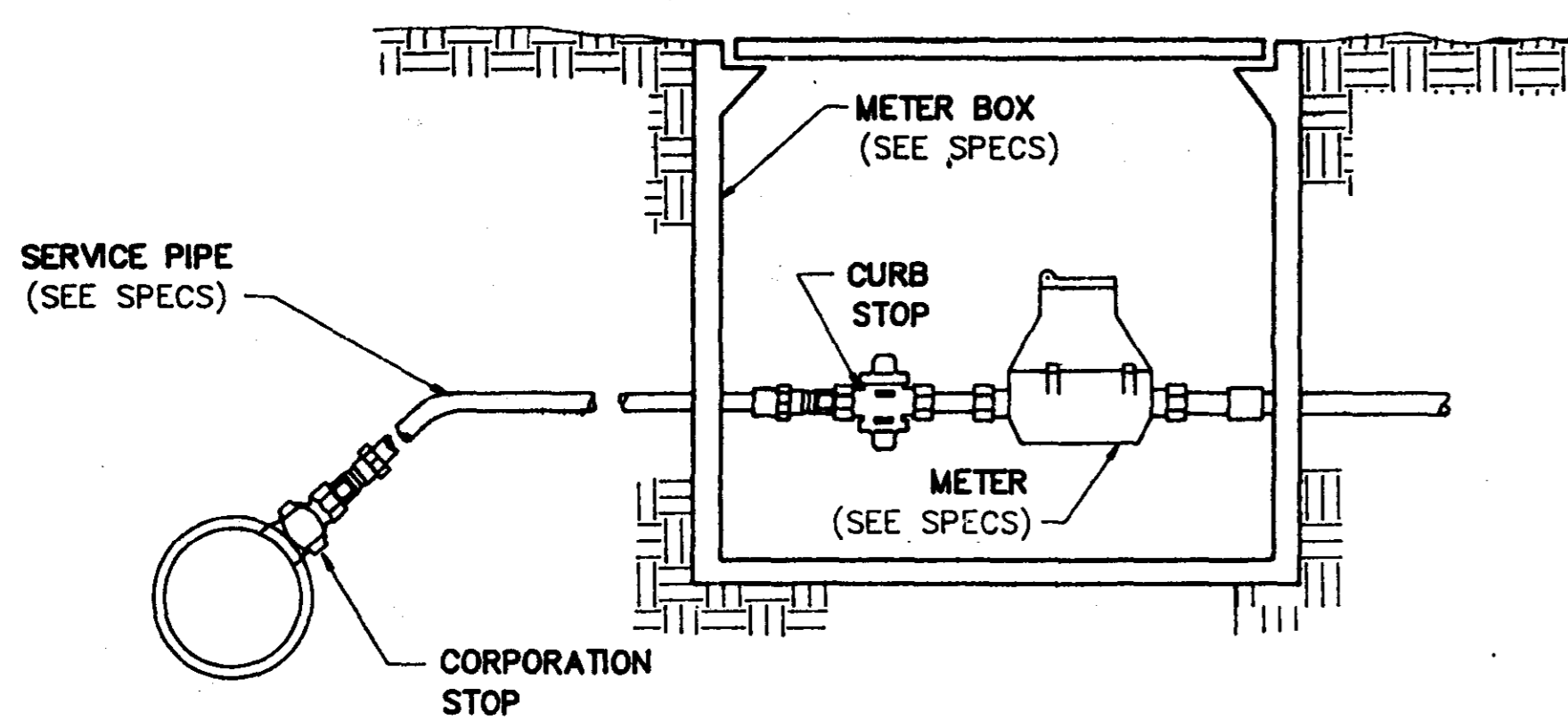
PIPE SIZE	AREA OF BEARING FACE CONCRETE THRUST		
	1/4 BEND	1/8 BEND	PLUGS & TEES
4-6	3	3	3
8	3	3	3
10	4	3	3
12	6	3	4
16	11	4	7



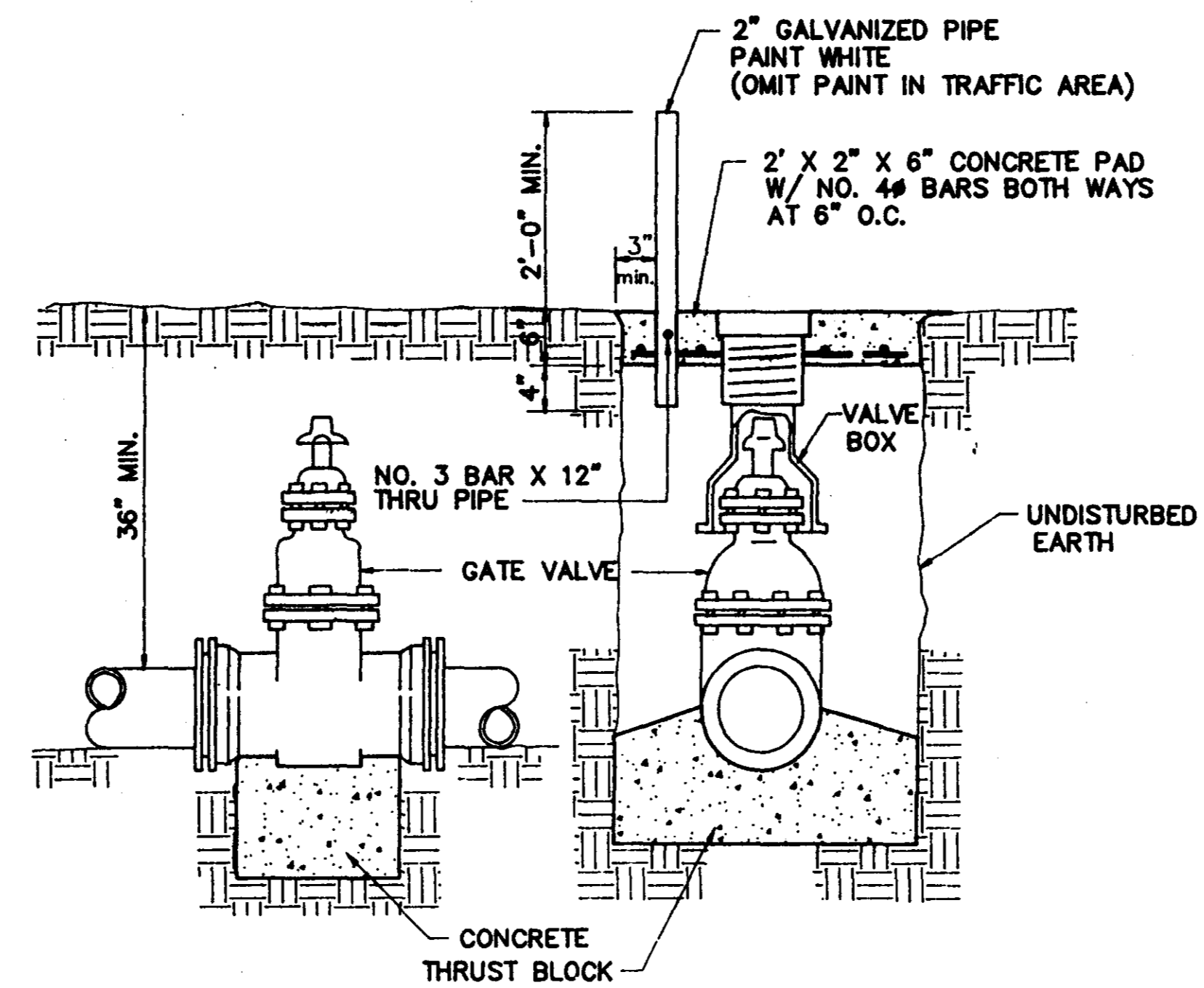
SECTION

SECTION

BLOCKING DETAILS FOR TEES & BENDS

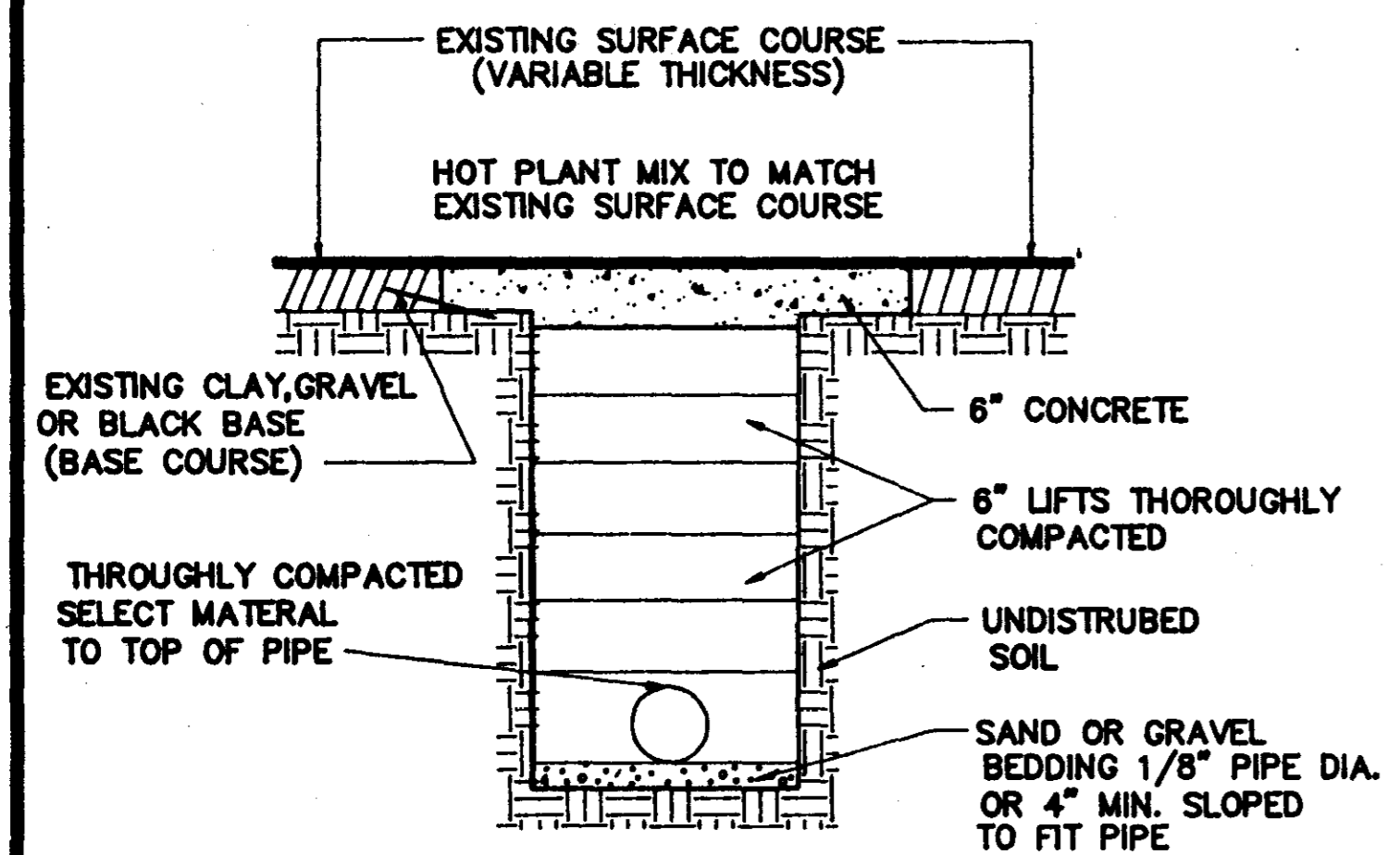


TYPICAL SERVICE ASSEMBLY

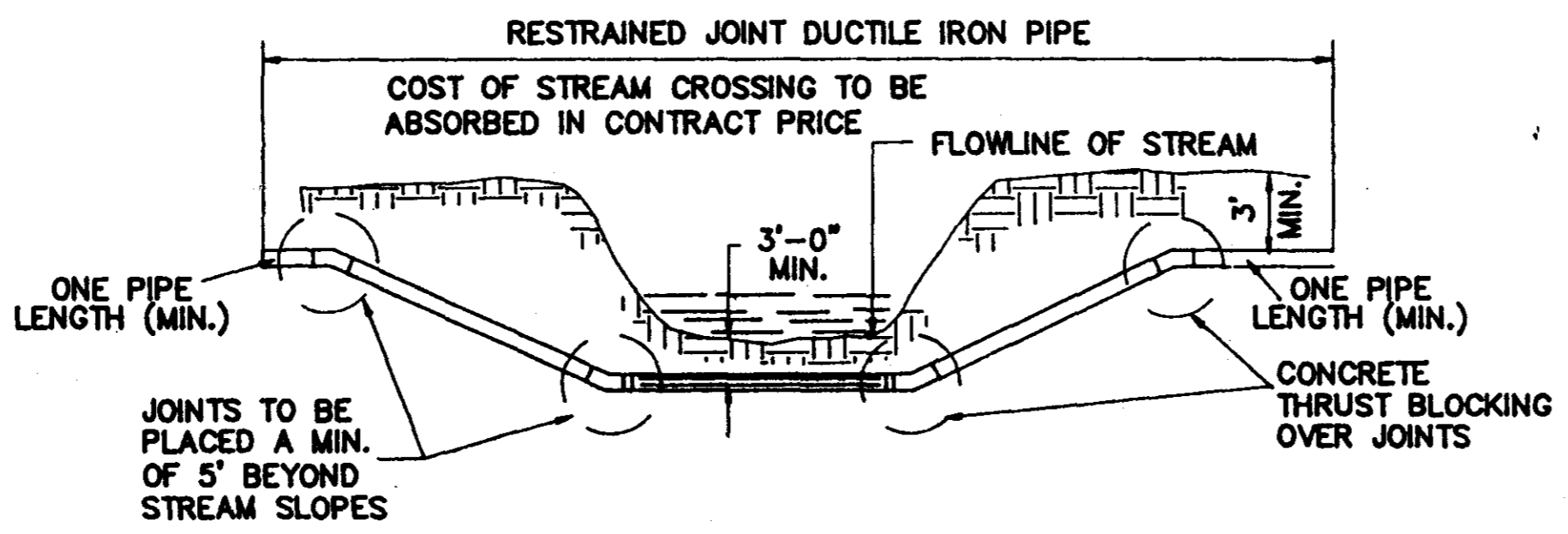


ELEVATION SECTION

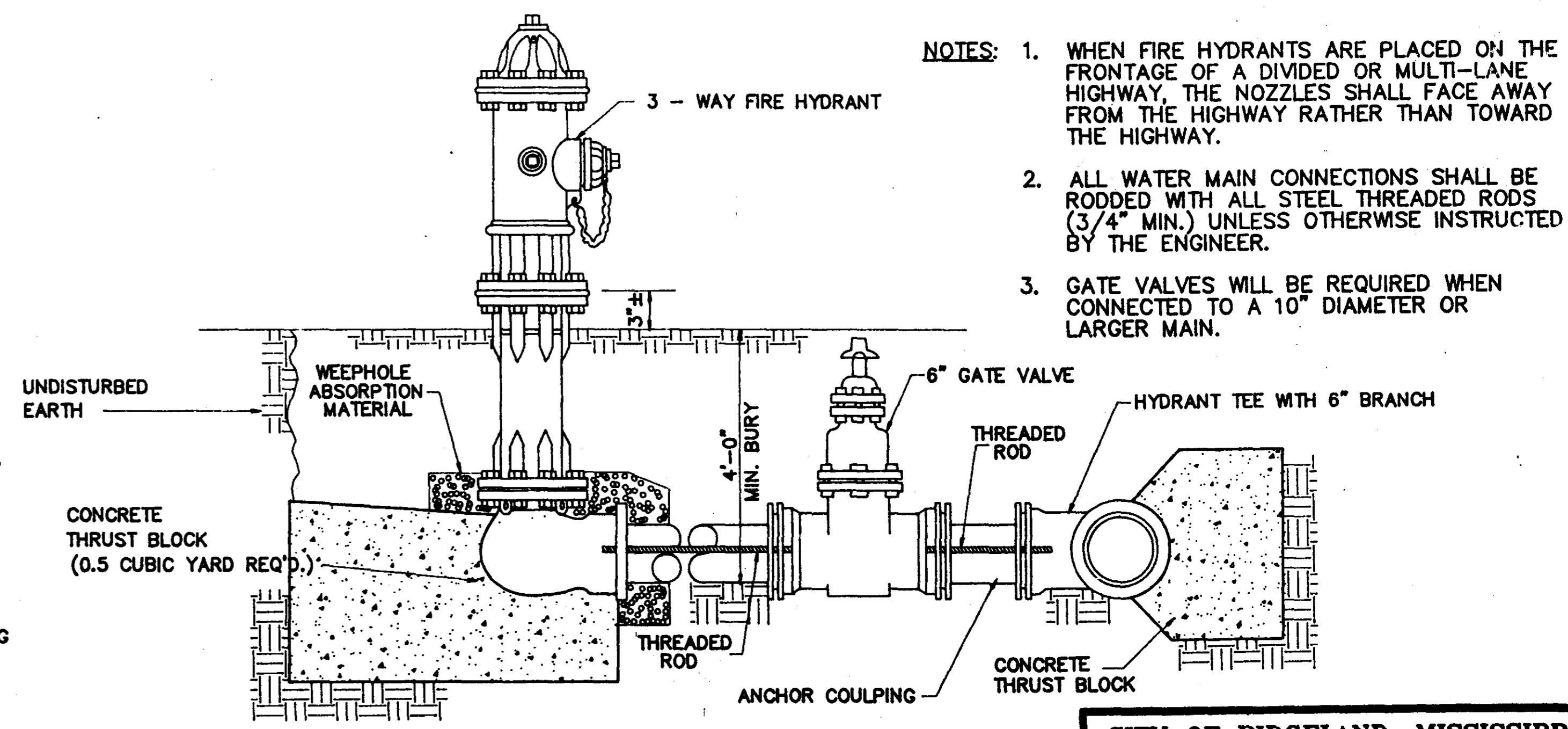
TYPICAL VALVE & BOX



STREET REPAIR OF OPEN CUT



TYPICAL STREAM CROSSING



TYPICAL FIRE HYDRANT ASSEMBLY

- NOTES:
1. WHEN FIRE HYDRANTS ARE PLACED ON THE FRONTAGE OF A DIVIDED OR MULTI-LANE HIGHWAY, THE NOZZLES SHALL FACE AWAY FROM THE HIGHWAY RATHER THAN TOWARD THE HIGHWAY.
 2. ALL WATER MAIN CONNECTIONS SHALL BE RODDED WITH ALL STEEL THREADED RODS (3/4" MIN.) UNLESS OTHERWISE INSTRUCTED BY THE ENGINEER.
 3. GATE VALVES WILL BE REQUIRED WHEN CONNECTED TO A 10" DIAMETER OR LARGER MAIN.

CITY OF RIDGELAND, MISSISSIPPI

WEST WATER LINES

WATER STANDARD DETAILS

WAGGONER ENGINEERING, INC.
Consulting Engineers - Jackson, Mississippi

DESIGNED BY: C.S.	DATE: 3-13-83	SHEET NUMBER: 8 OF 8
REVIEWED BY: W.L.M.	SCALE: NOT TO SCALE	