

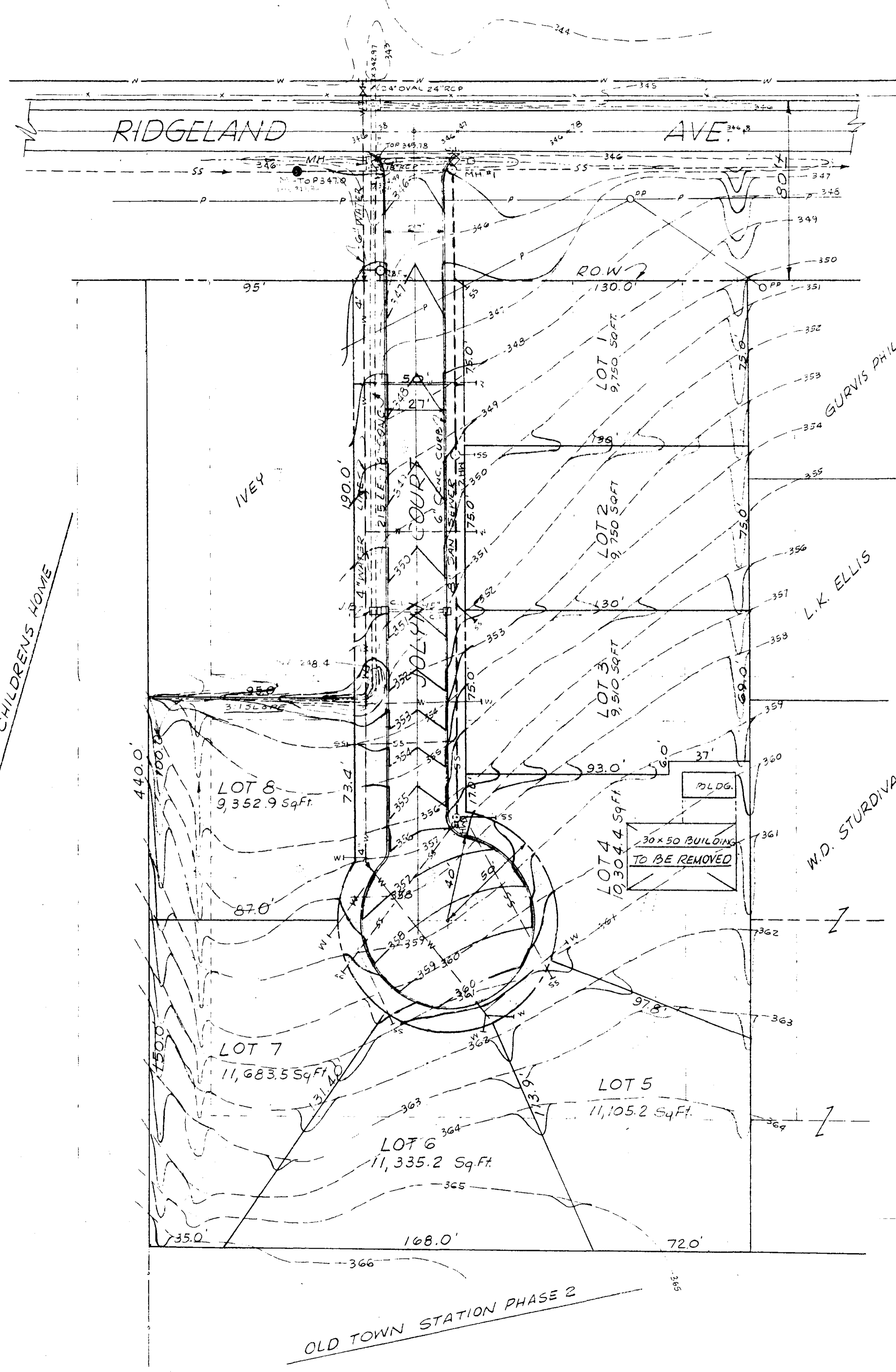
JOLYN SUBDIVISION



8/17/93

PWP 00331
~~10277-10~~

SCALE:	APPROVED BY:	DRAWN BY:
DATE:	JOLYN SUB.	
DRAWING NUMBER		10277-1 of 10



**JOLYN SUBDIVISION
STORM DRAINAGE COMPUTATIONS**

<p> RUNOFF: Q = CIA C = 0.75 I = 6 INCHES/HOUR A = DRAINAGE AREA </p>	<p> CAPACITY: Q = CxS^{1/2} C = (1.46/n)xAv^{2/3} S = SLOPE N = 0.013 </p>
---	--

NOTE: C is taken from Table 3 in the "Concrete Pipe Design Manual" published by the American Concrete Pipe Association.

<p> INLET 1: DA = 1.5 AC Q = (0.75)(6)(1.5) Q = 6.8 CFS </p>	<p> 15" @ 1.10% Q = (64.7)(.1049) Q = 6.8 CFS </p>
<p> INLET 2: DA = 1.0 AC Q = (0.75)(6)(1.0) = Q Q = 4.5 CFS Q = 11.3 CFS </p>	<p> 18" @ 1.86% Q = (105)(0.1364) Q = 14.3 CFS </p>

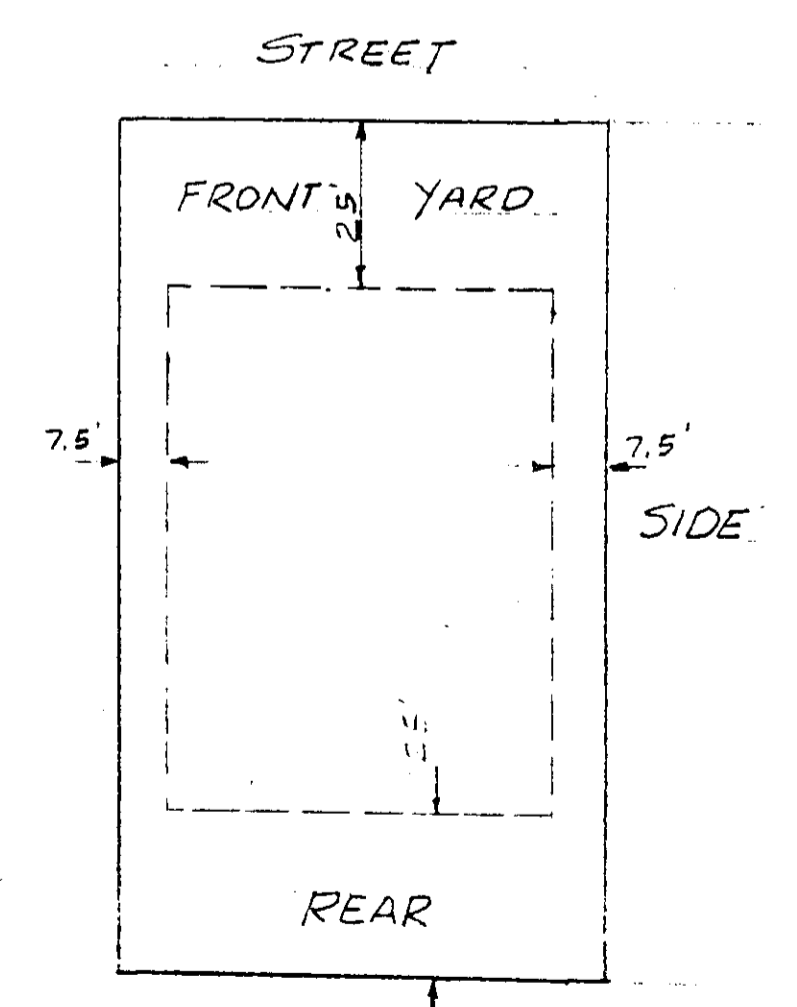
SUNNYBROOK CHILDRENS HOME

OLD TOWN STATION PHASE 2

GRADING PLAN

EXISTING GRADE
FINISH GRADE

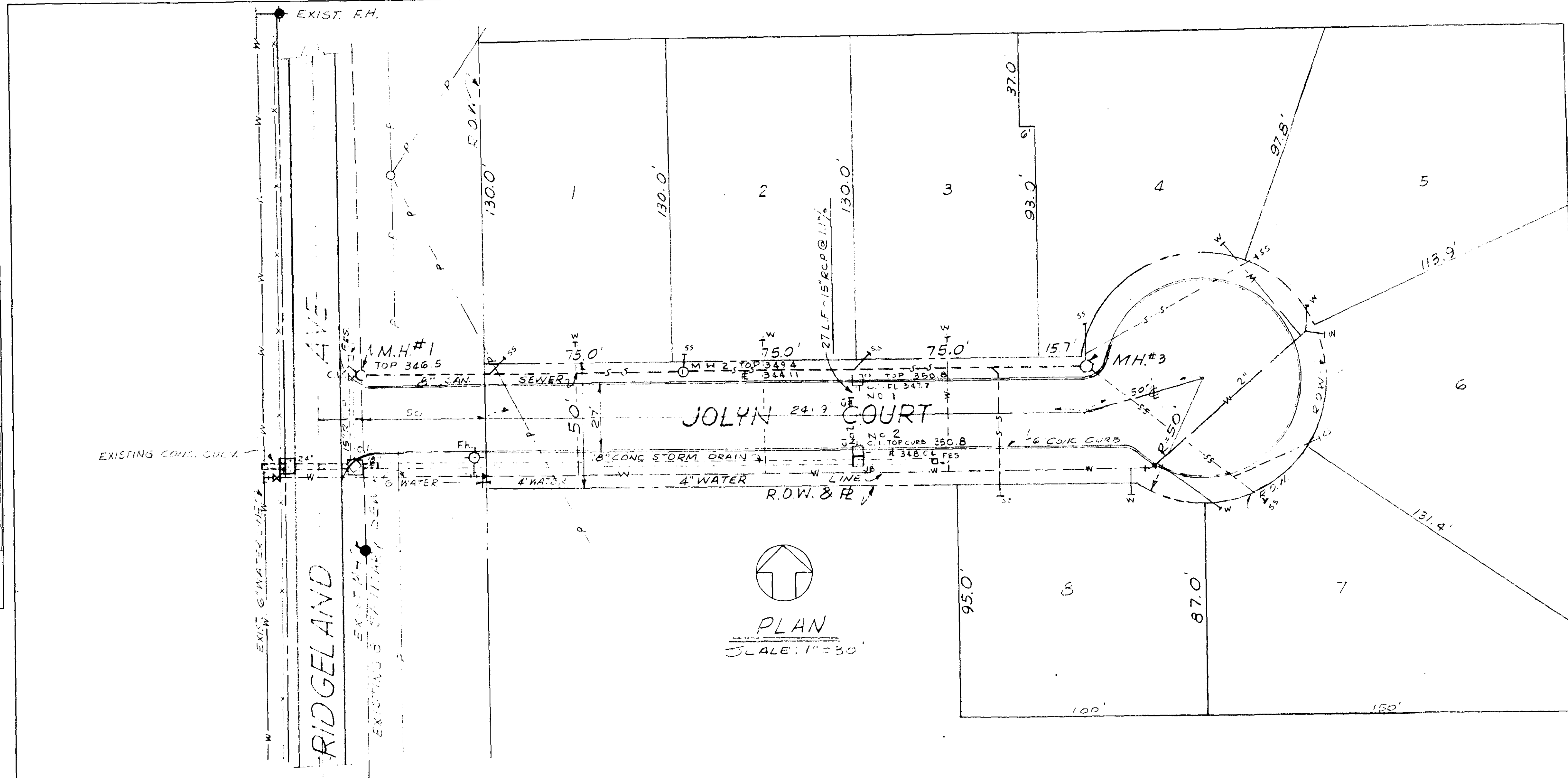
A PORTION OF BLOCK 5 TOWN OF
RIDGELAND, MADISON CO., MS.
ZONED R 3A



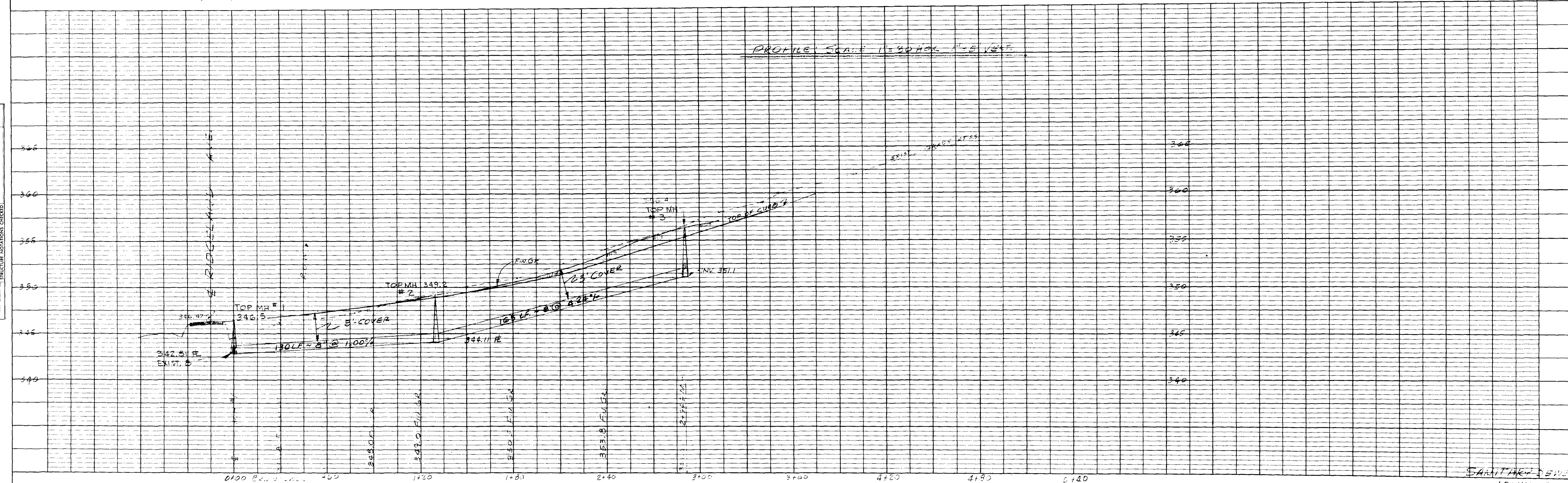
TYPICAL SETBACK
MIN. HTG. AREA = 1,500'

PROPOSED JOLYN SUB.		
SCALE: 1" = 30'	APPROVED BY	DRAWN BY
DATE: 6-7-93		
OWNER: W.D. STURDIVANT		
		DRAWING NUMBER
		10279-3 of 10

PLAN
 SURVEYED BY _____ DATE _____
 PLOTTED BY _____
 CHECKED BY _____
 NOTE BOOK NO. _____
 OF WAY CHECKED BY _____



PROFILE
 SURVEYED BY _____ DATE _____
 PLOTTED BY _____
 CHECKED BY _____
 NOTE BOOK NO. _____
 OF WAY CHECKED BY _____
 STRUCTURE NOTATIONS CHECKED BY _____

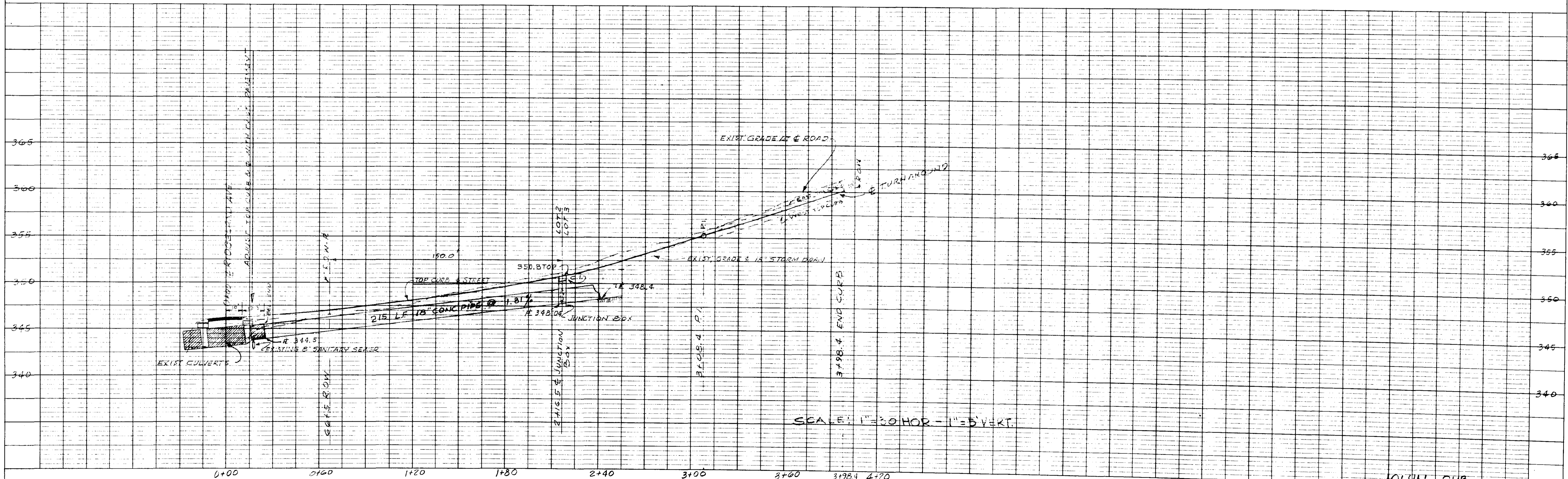


SANTANA ENGINEERS
 JOLYN SUB.

PLAN
 SURVEYED BY
 PLOTTED BY
 NOTE BOOK, ALIGNMENT CHECKED
 No. OF WAY CHECKED

SEE SHEET 10280 FOR PLAN

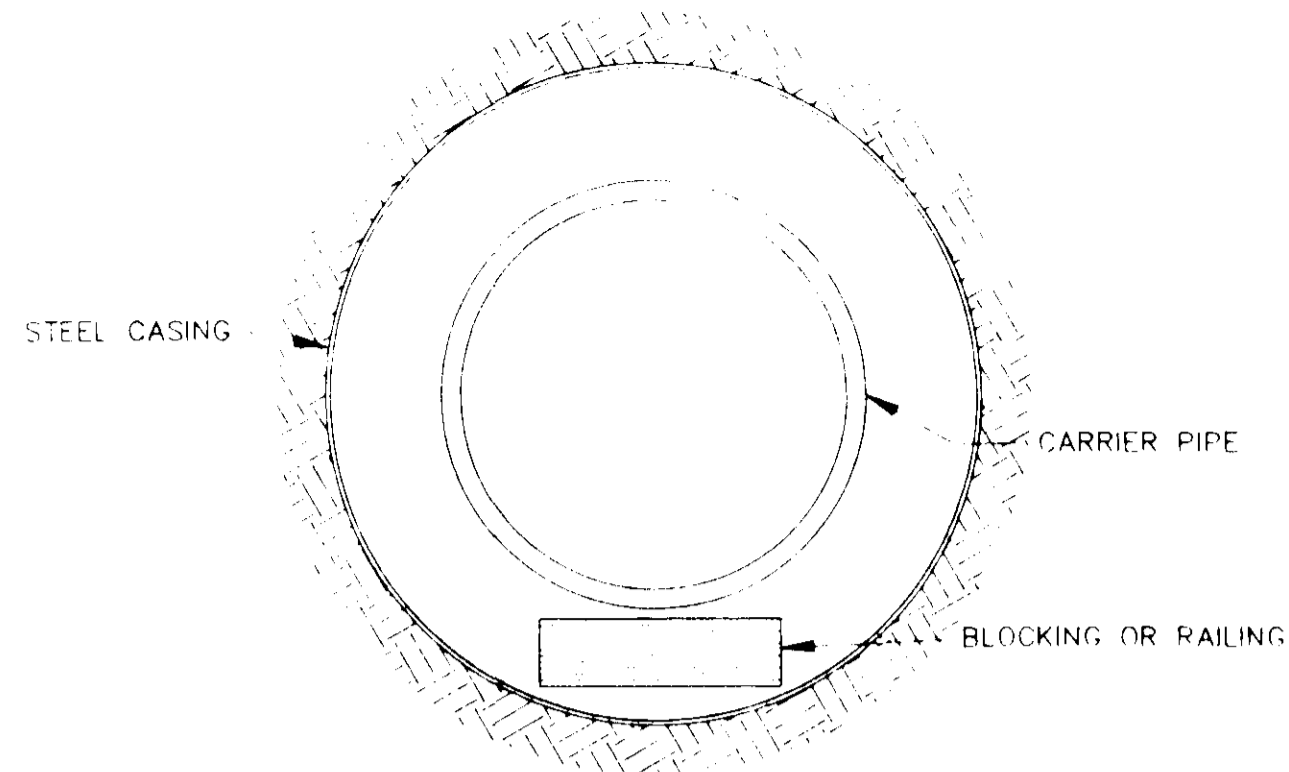
PROFILE
 SURVEYED BY
 PLOTTED BY
 NOTE BOOK, GRADES CHECKED
 No. OF GRADES CHECKED



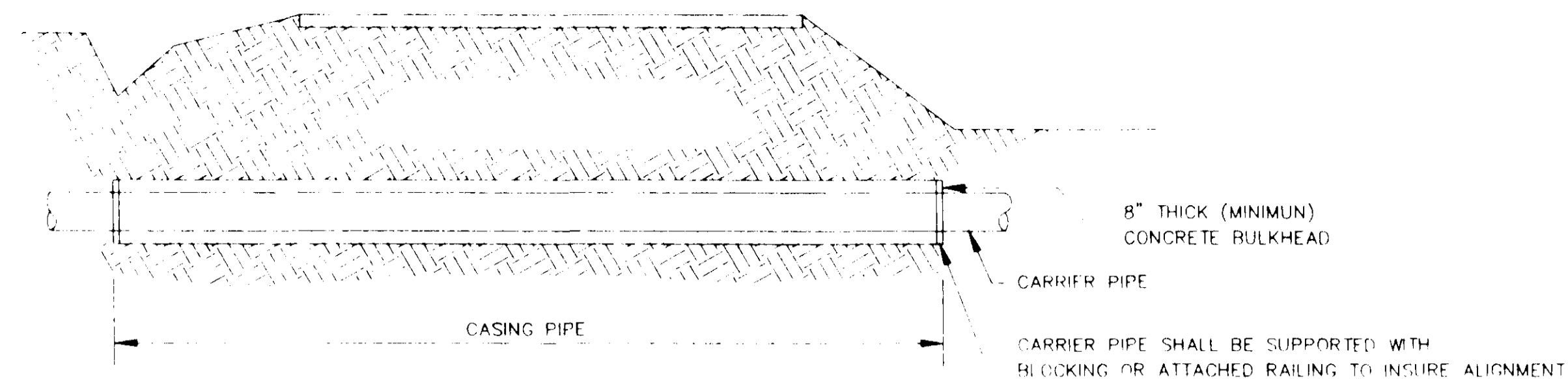
SCALE: 1" = 30' HOR - 1" = 5' VERT.

HIGHWAY FEDERAL AND STATE
 PLATE 1-SINGLE PLAN AND PROFILE FULL LINE
 PRINTED IN U.S.A.

JOHN SUB.
 ROAD PROFILE & STORM DRAIN



BORE SECTION
N.T.S.

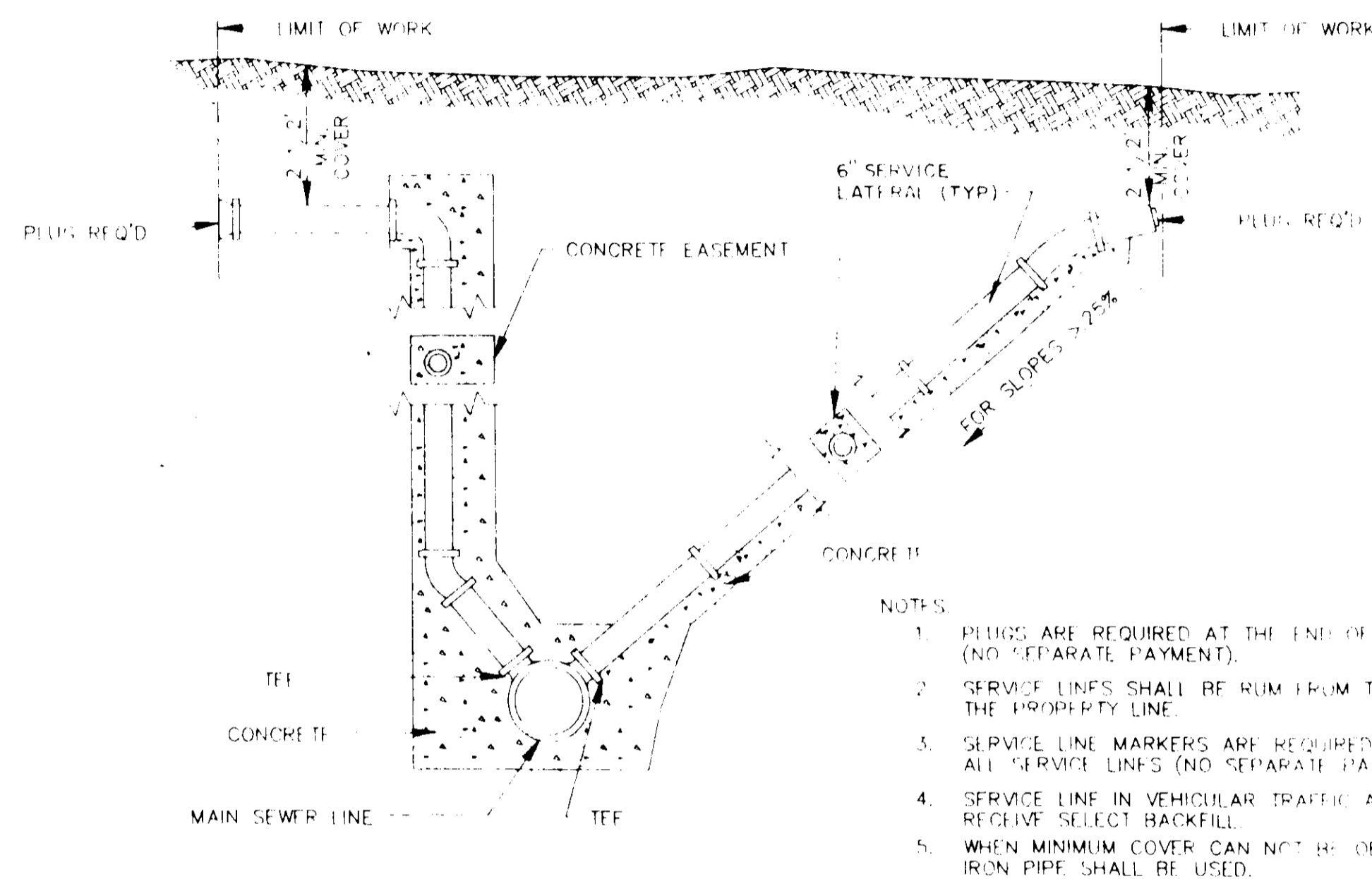


TYPICAL BORE SECTION
N.T.S.

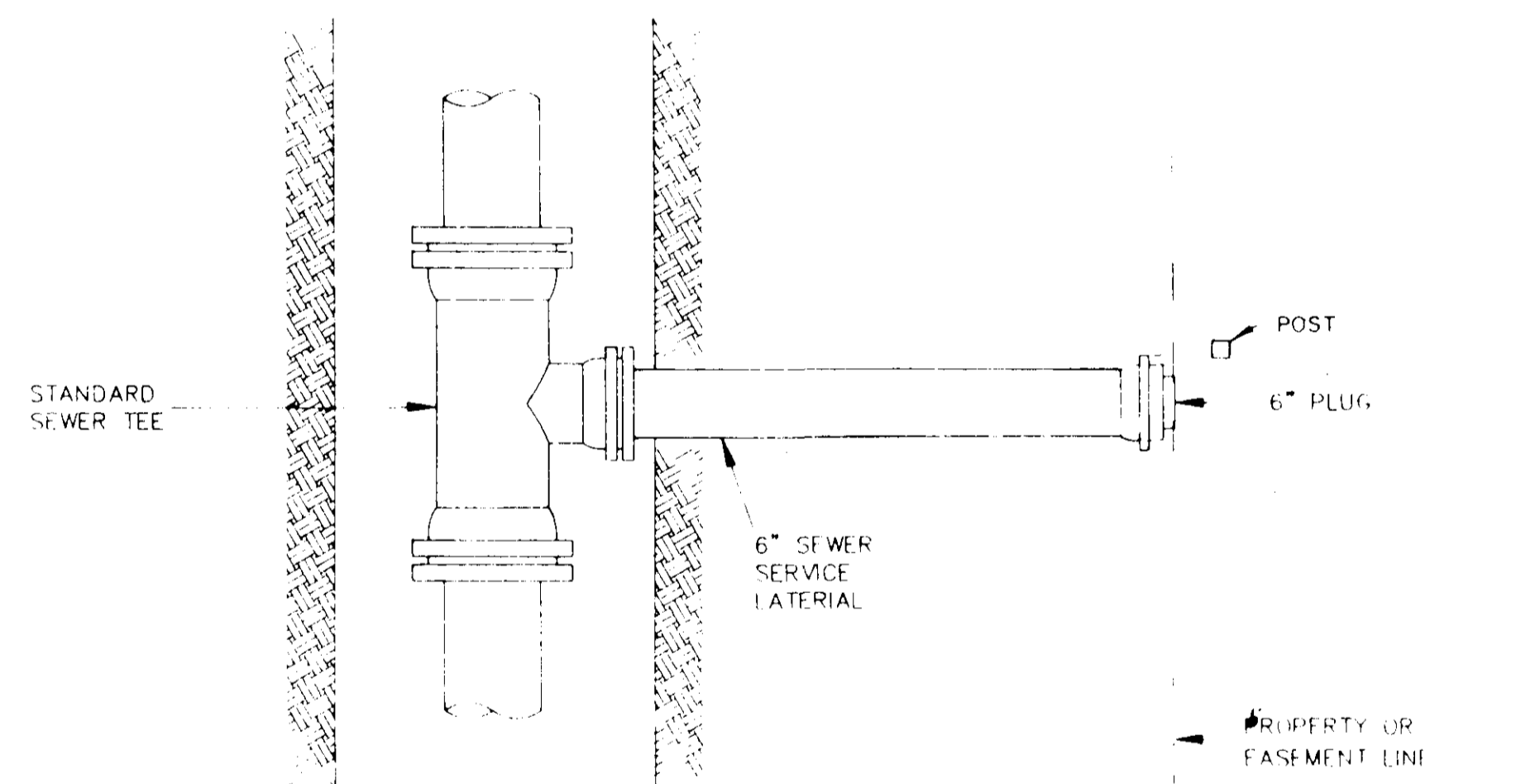
TABLE II
GOVERNING DIMENSIONS FOR MANHOLES

PIPE SIZE	Δ ANGLE	BASE DIAMETER **	"R"
8" THRU 12"	0° TO 90°	4'	1'-6"
15"	0° TO 60°	4'	1'-10"
15"	60° TO 90°	4'	1'-10"
18"	0° TO 60°	4'	2'-3"
18"	60° TO 90°	4'	1'-10"
21"	0° TO 60°	4'	2'-7"
21"	60° TO 90°	5'	2'-4"
24"	0° TO 45°	4'	3'-0"
24"	45° TO 90°	5'	2'-3"
30"	0° TO 60°	5'	3'-9"
30"	60° TO 90°	6'	2'-8"
36"	0° TO 60°	6'	4'-6"
36"	60° TO 90°	7'	3'-11"
42"	0° TO 60°	7'	5'-3"
42"	60° TO 90°	8'	4'-7"
48"	0° TO 60°	8'	6'-0"
48"	60° TO 90°	9'	5'-3"

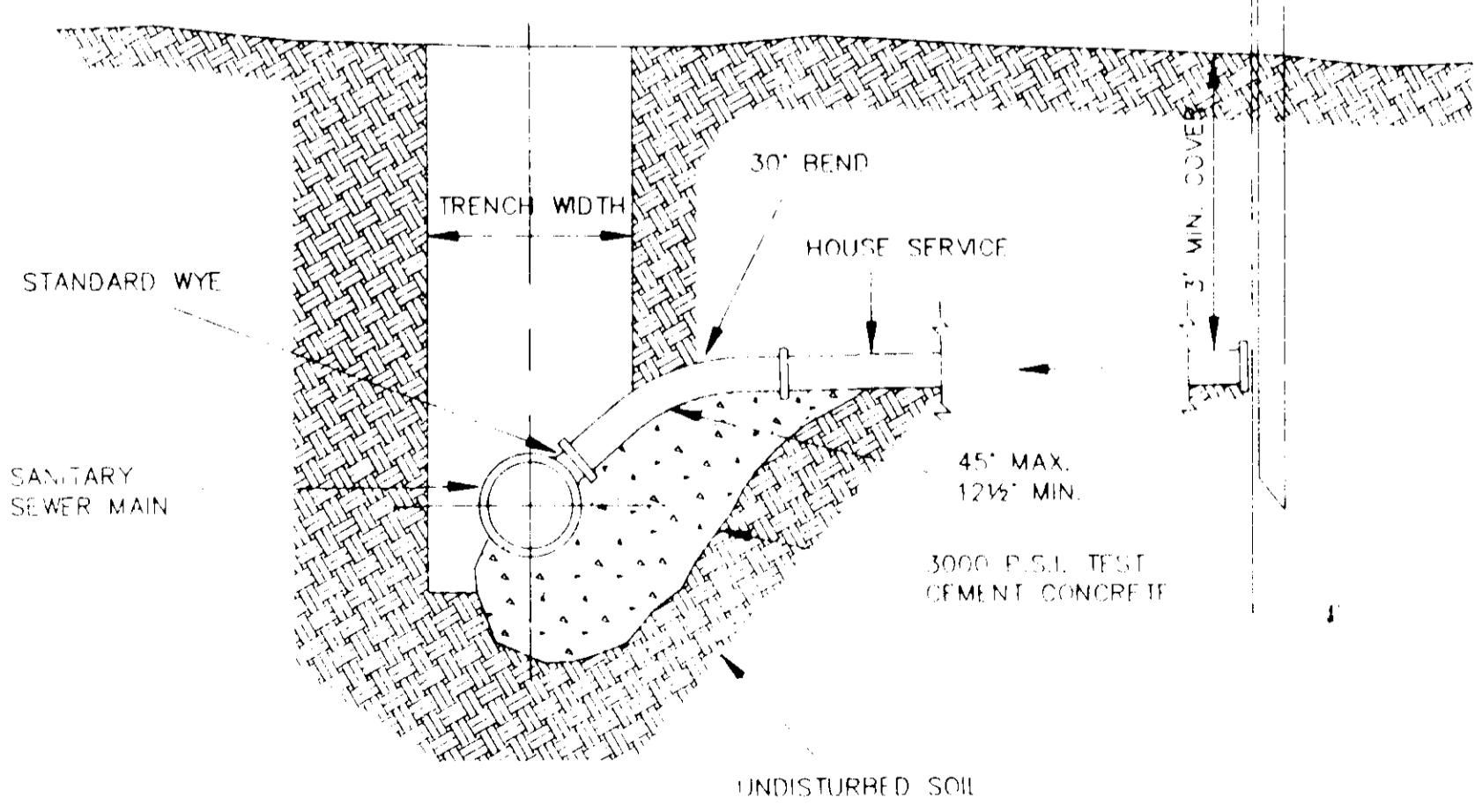
* SEE SECTIONAL PLAN, STANDARD MANHOLE
** PRECAST MANHOLE



SERVICE CONNECTION FOR DEEP SEWER
N.T.S.

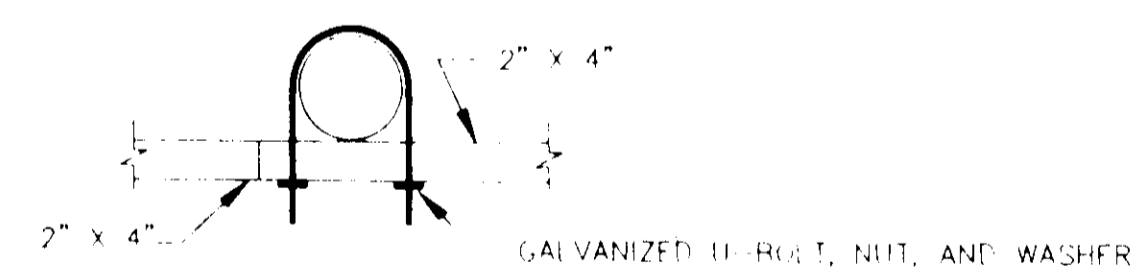


PLAN

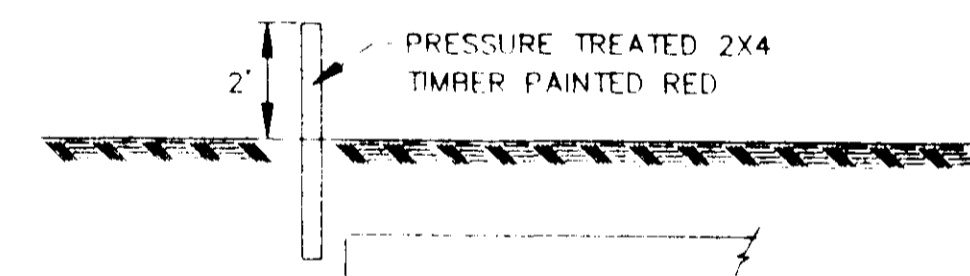


ELEVATION

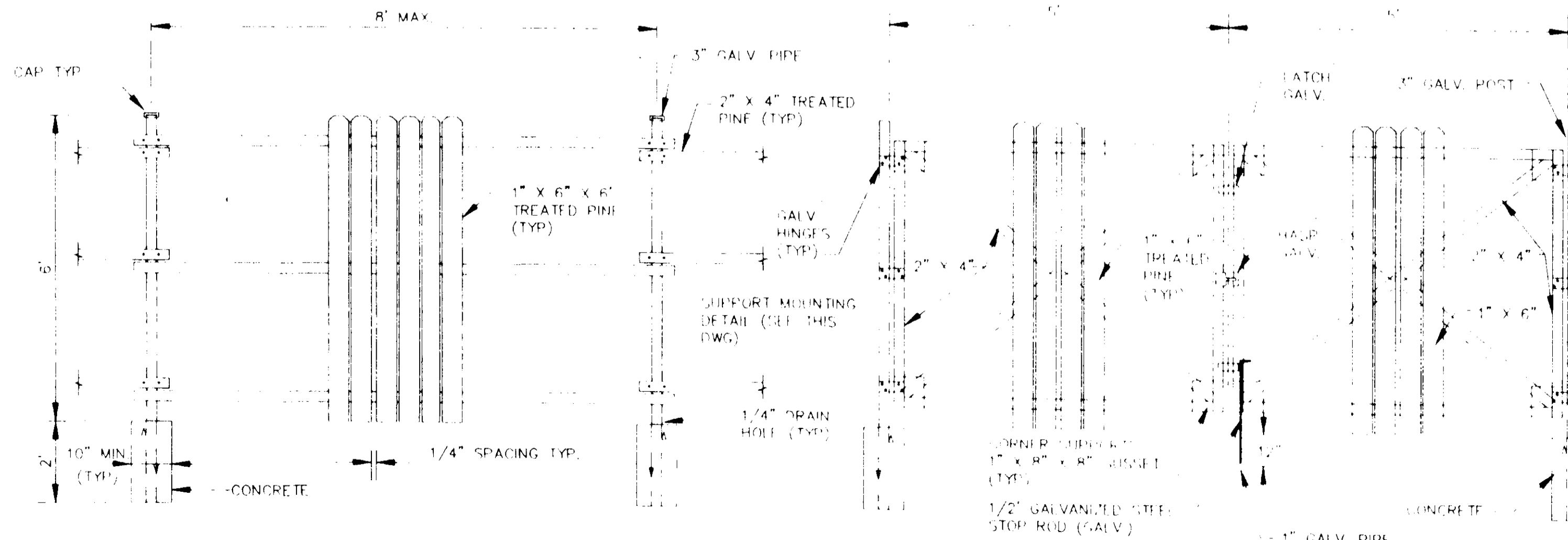
SEWER SERVICE CONNECTION
N.T.S.



SUPPORT MOUNTING DETAIL
N.T.S.



SERVICE LINE MARKER
(NO SEPARATE PAYMENT)
N.T.S.

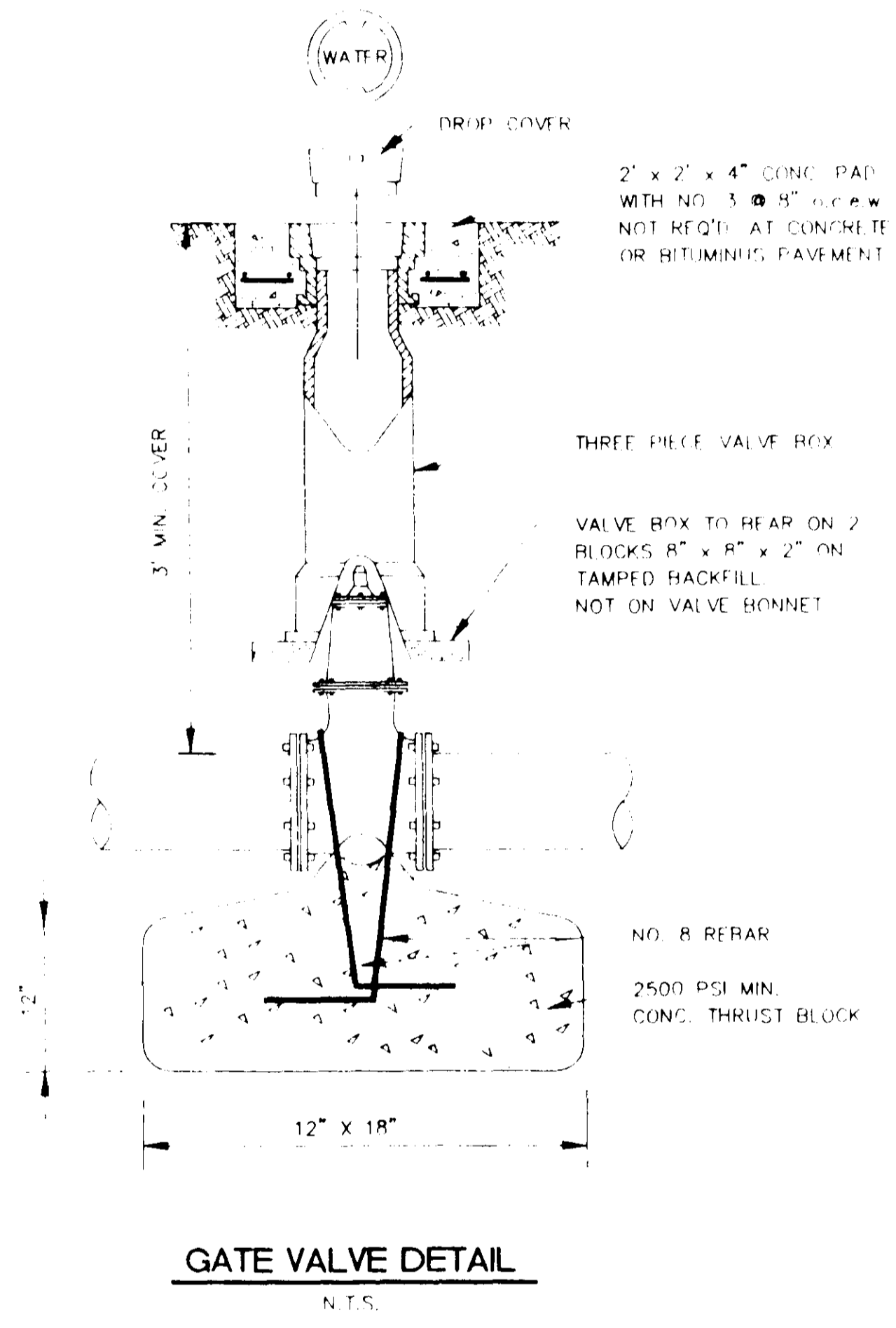
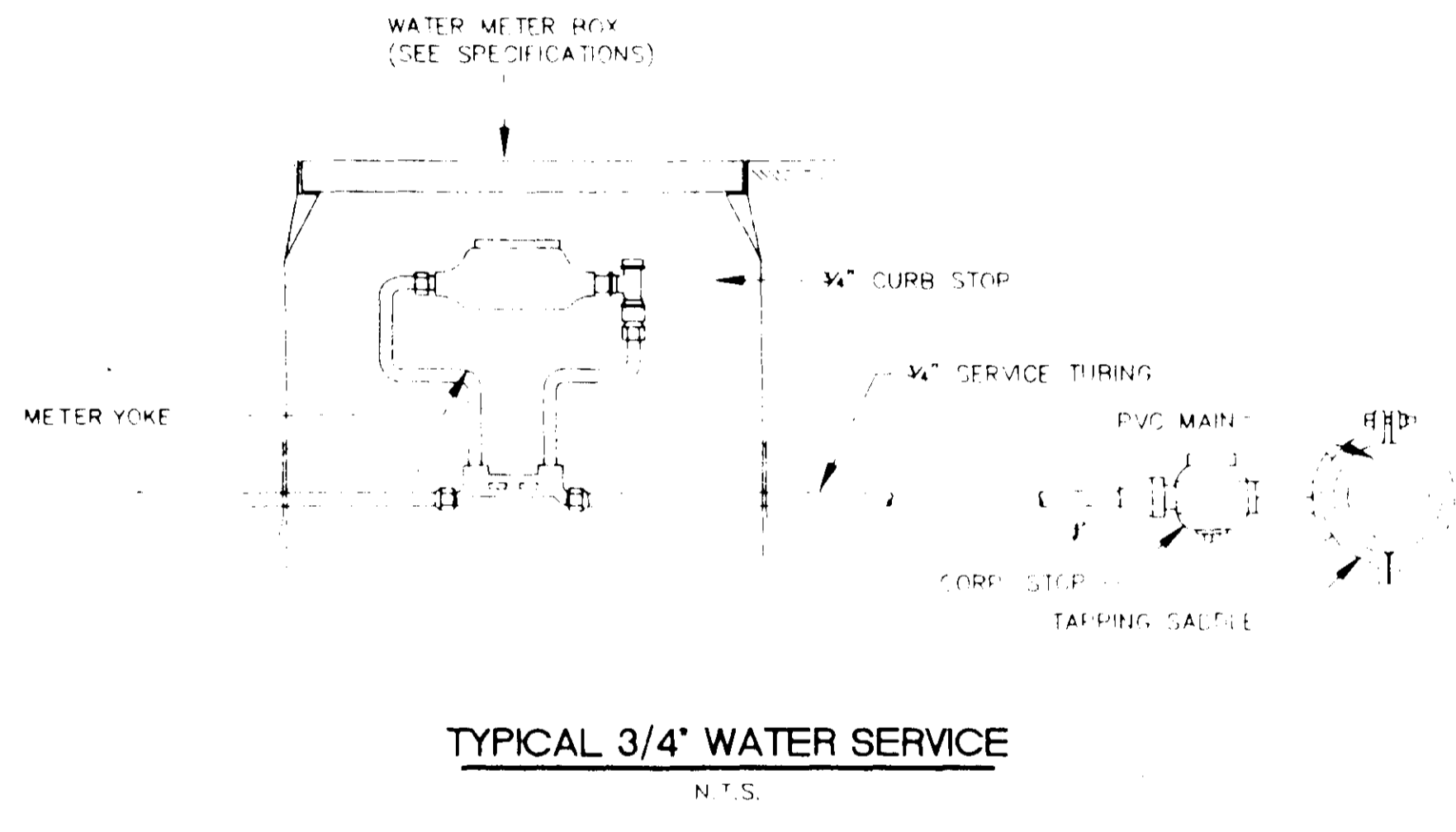
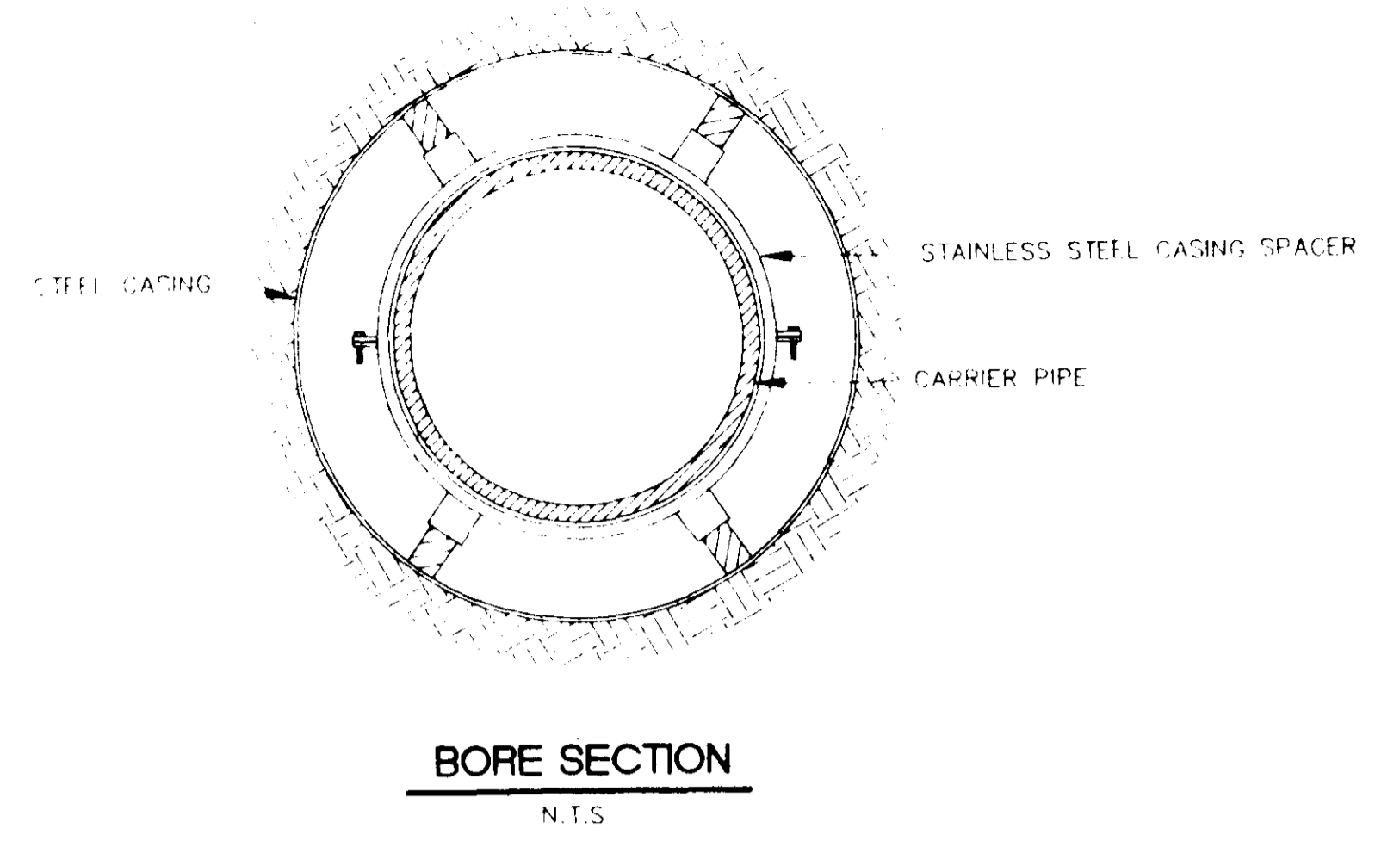
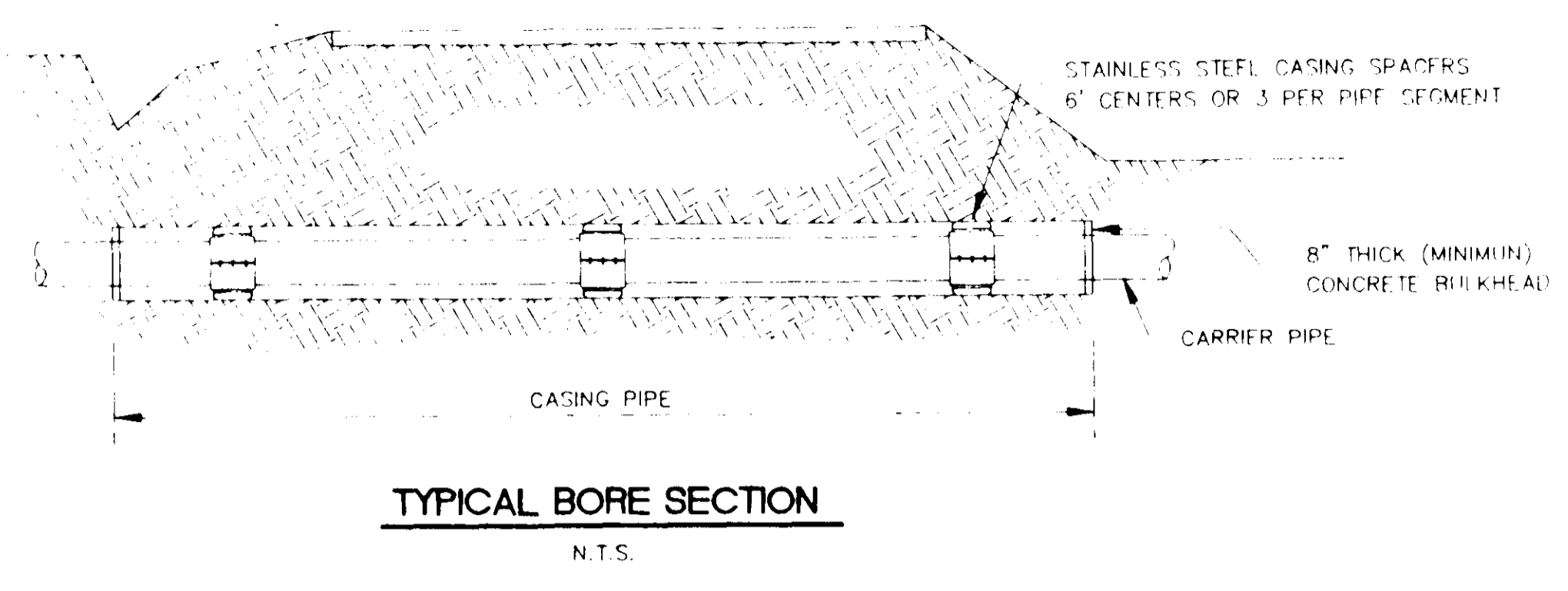
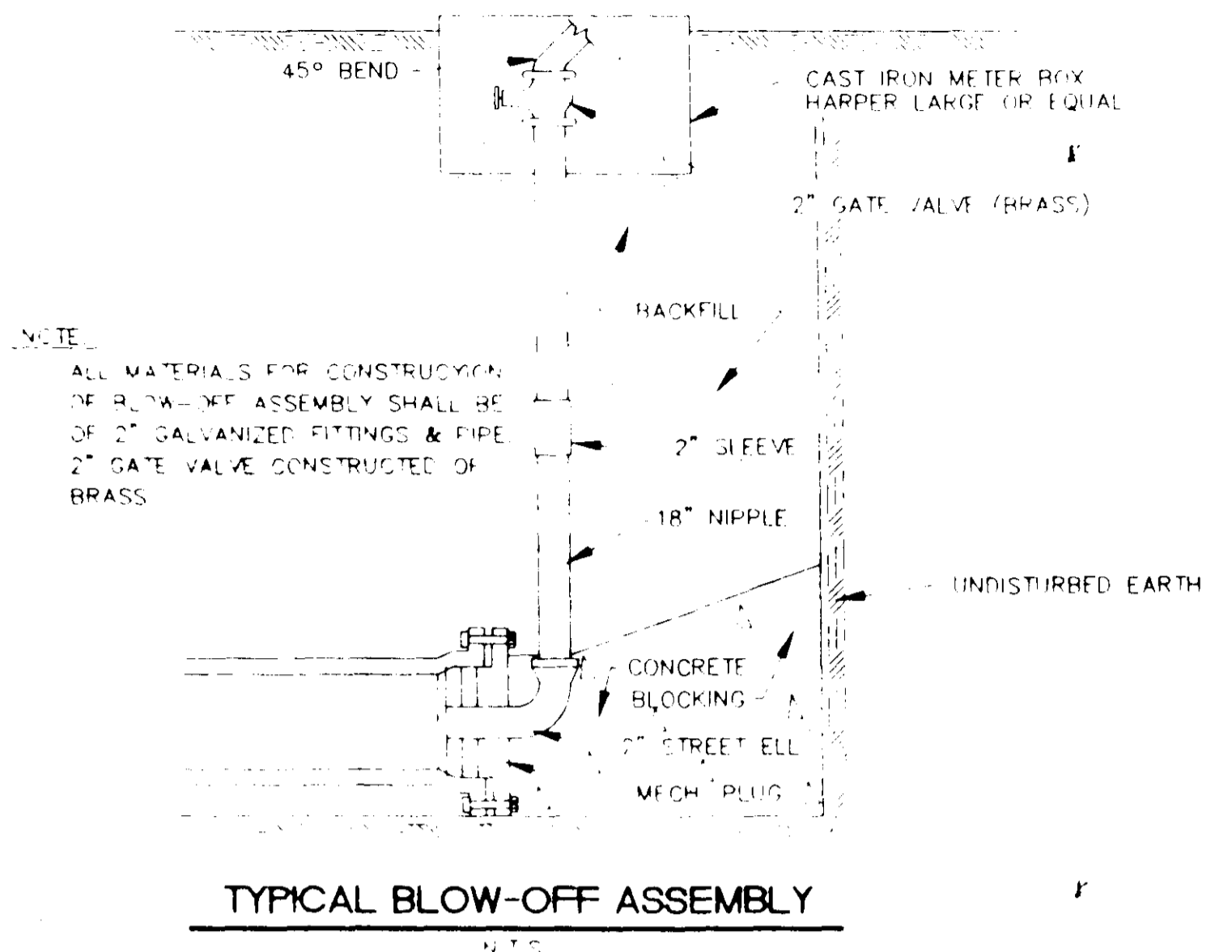


FENCE DETAIL
N.T.S.

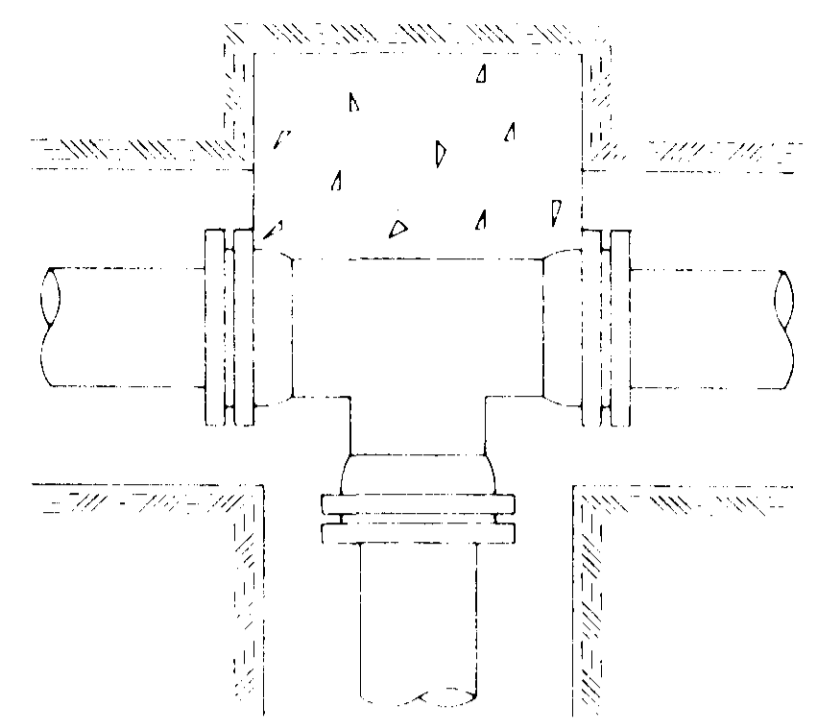
GATE DETAIL
N.T.S.

JOLYN SUB.

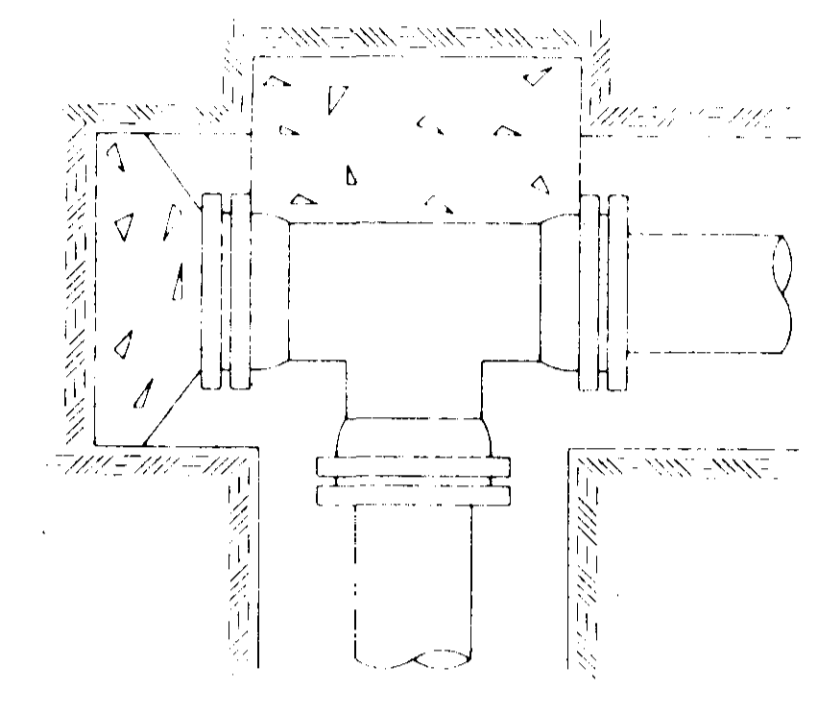
DSGN		DRAWING NO.
DRWN		6 OF 10
CHKD		
SCALE		



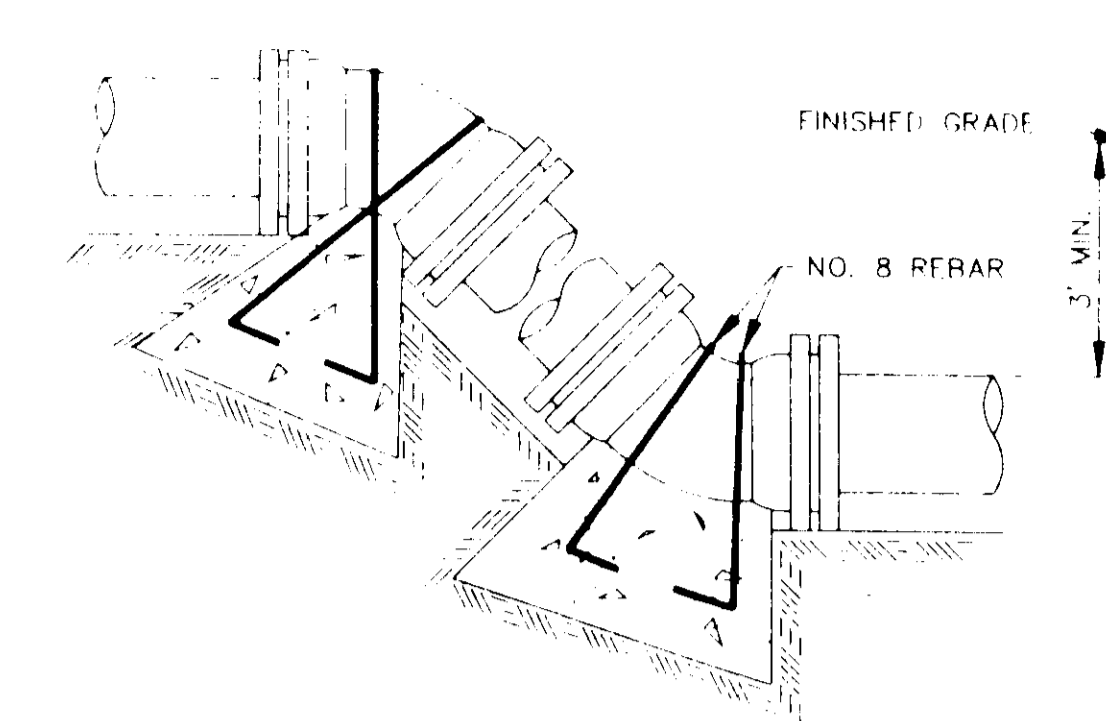
JOLYN SUB.	
DSGN	
DRWN	
CHKD	
SCALE	
DRAWING NO 7 of 10	



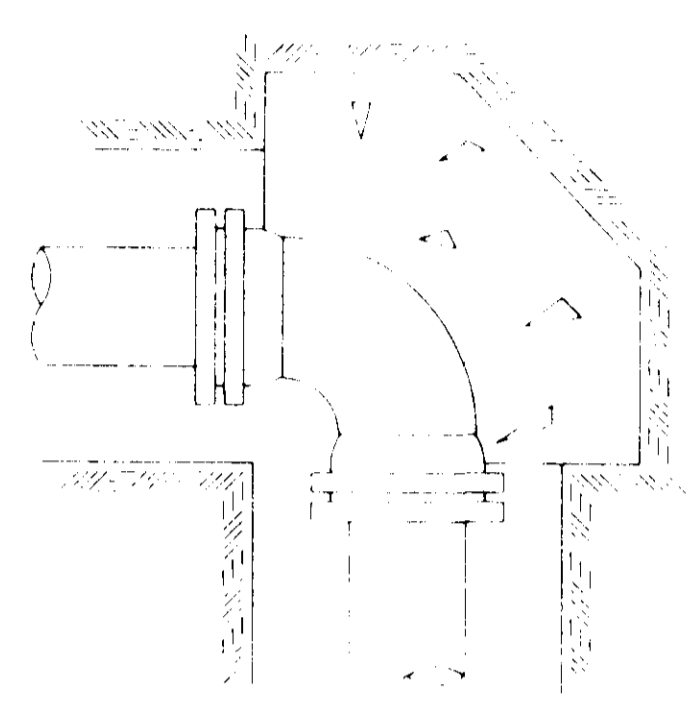
TEE



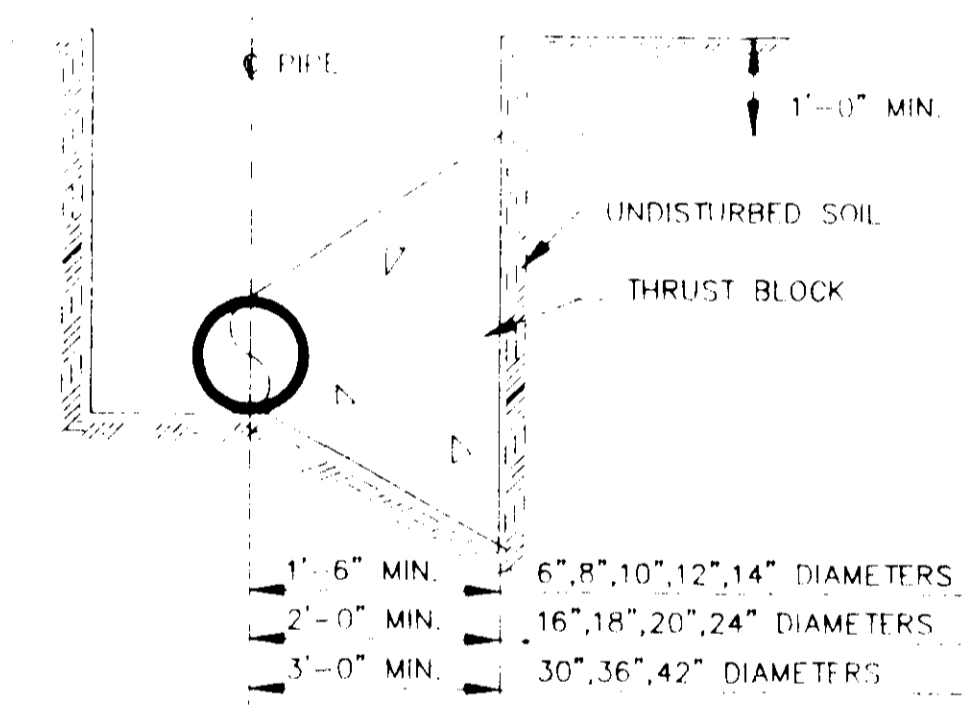
PLUGGED TEE



VERTICAL BENDS



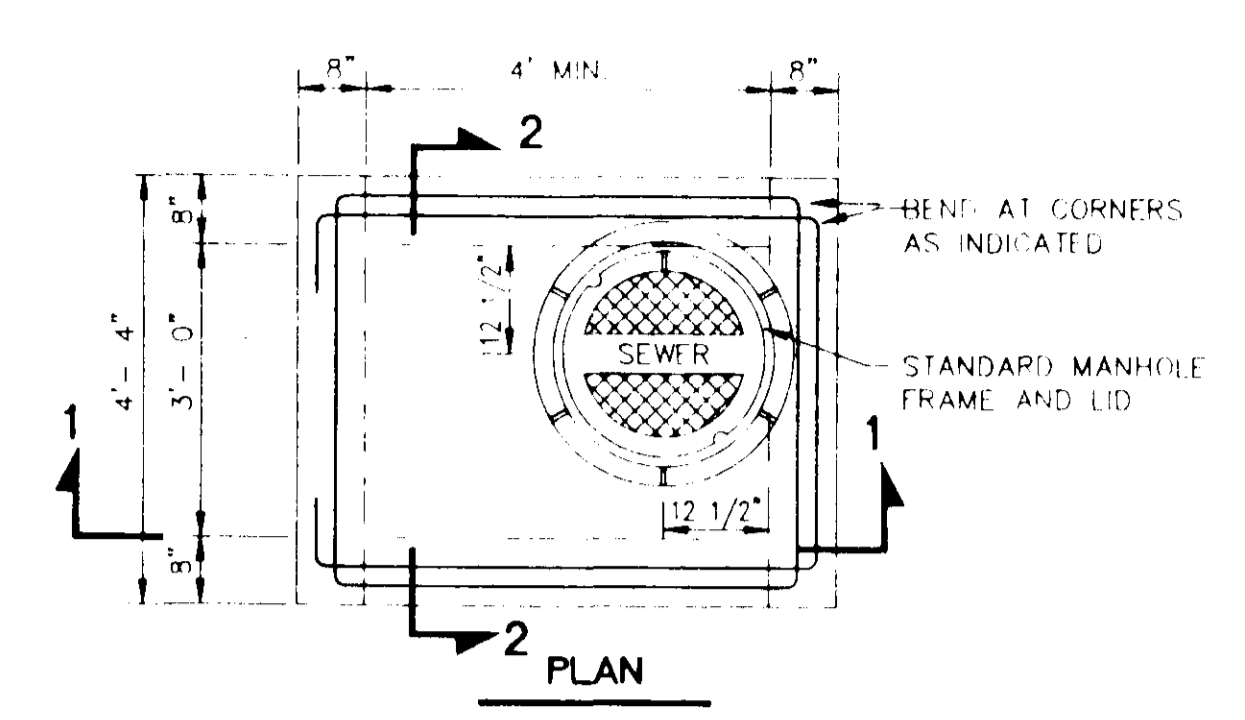
90° BEND



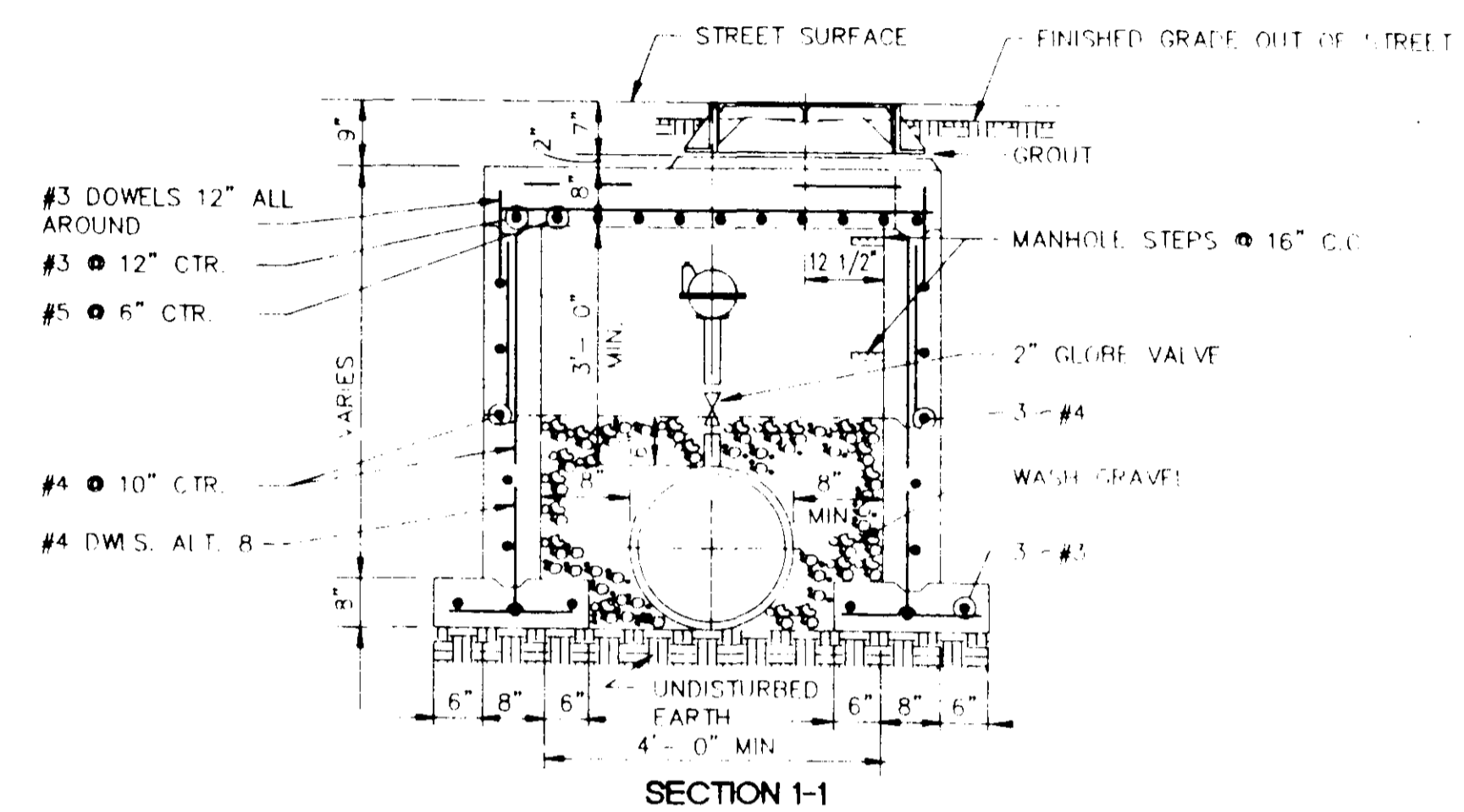
TYPICAL CROSS SECTION

TYPICAL THRUST BLOCKING IN WATER MAINS AND SEWAGE FORCE MAINS

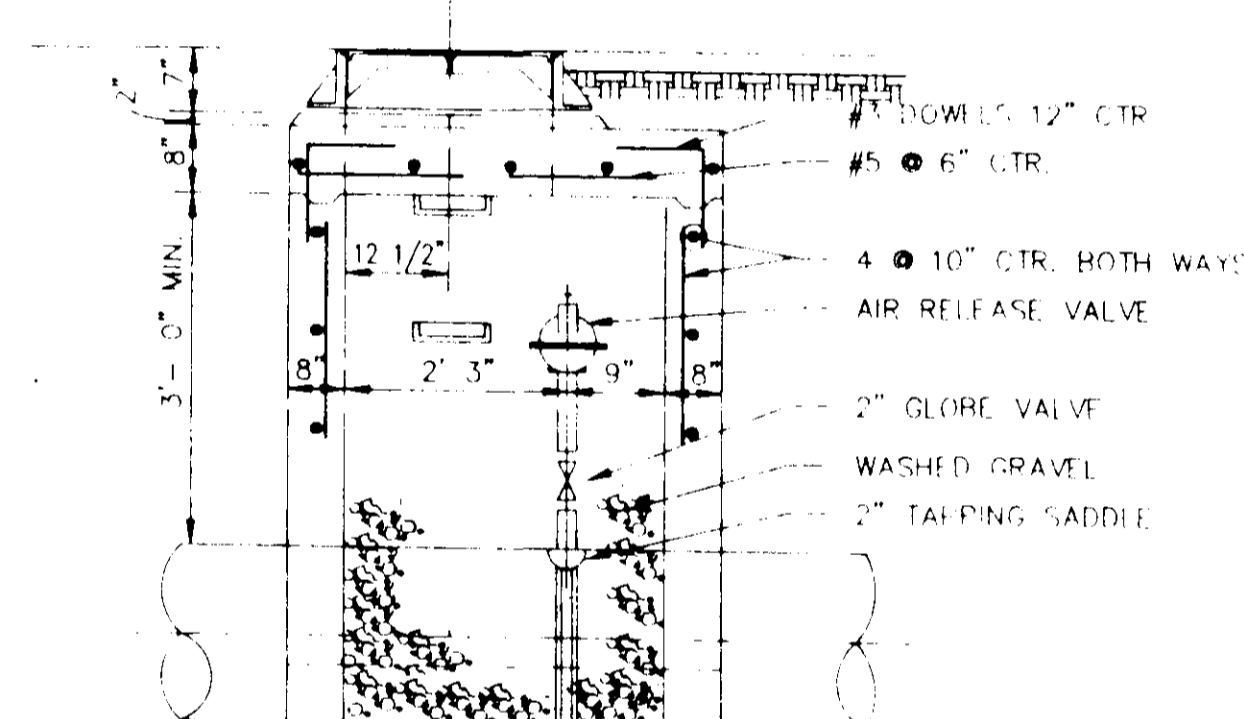
N.T.S.
NOTE: ALL THRUST BLOCKS 2,500 PSI CONCRETE AGAINST UNDISTURBED EARTH



PLAN



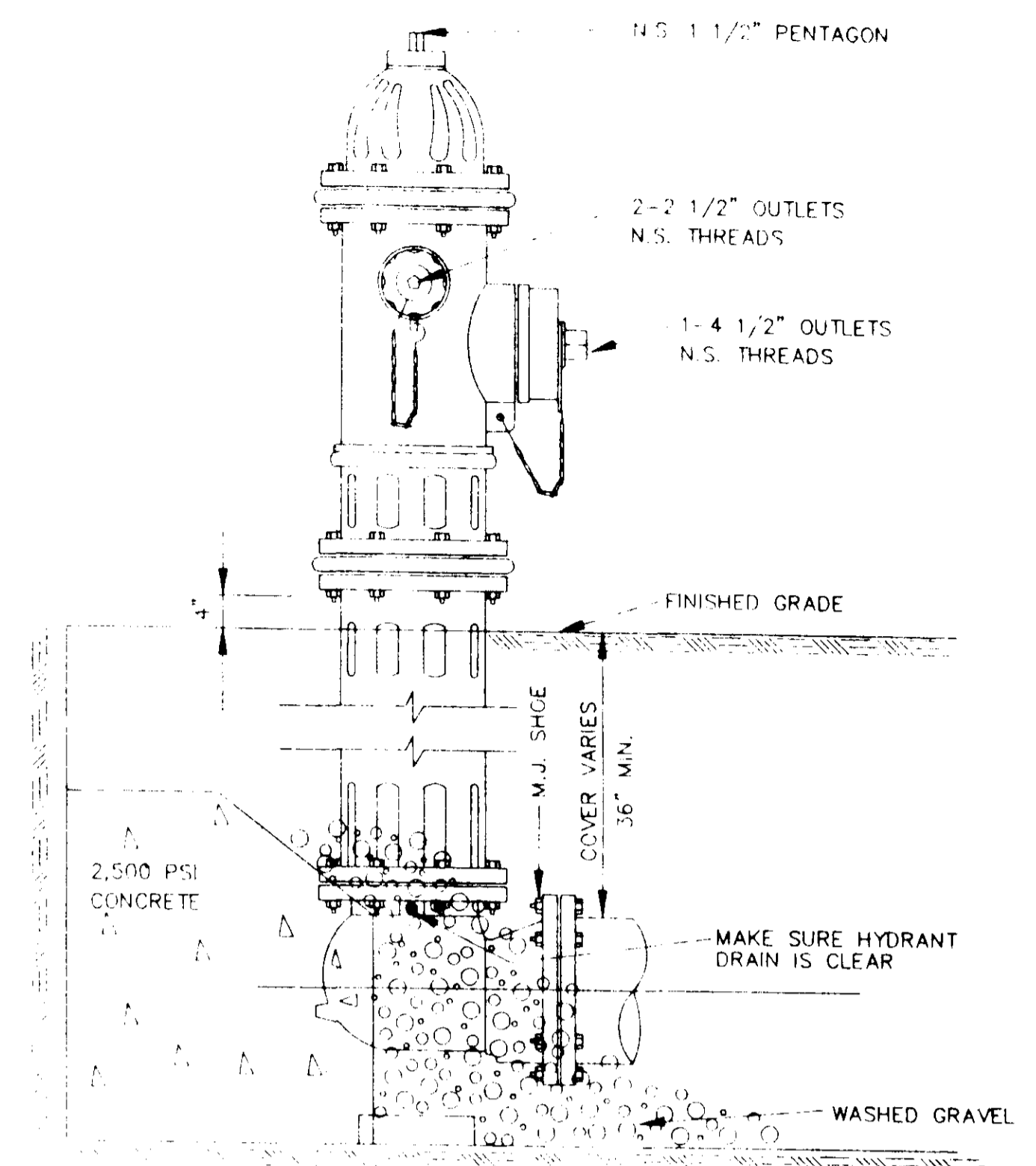
SECTION 1-1



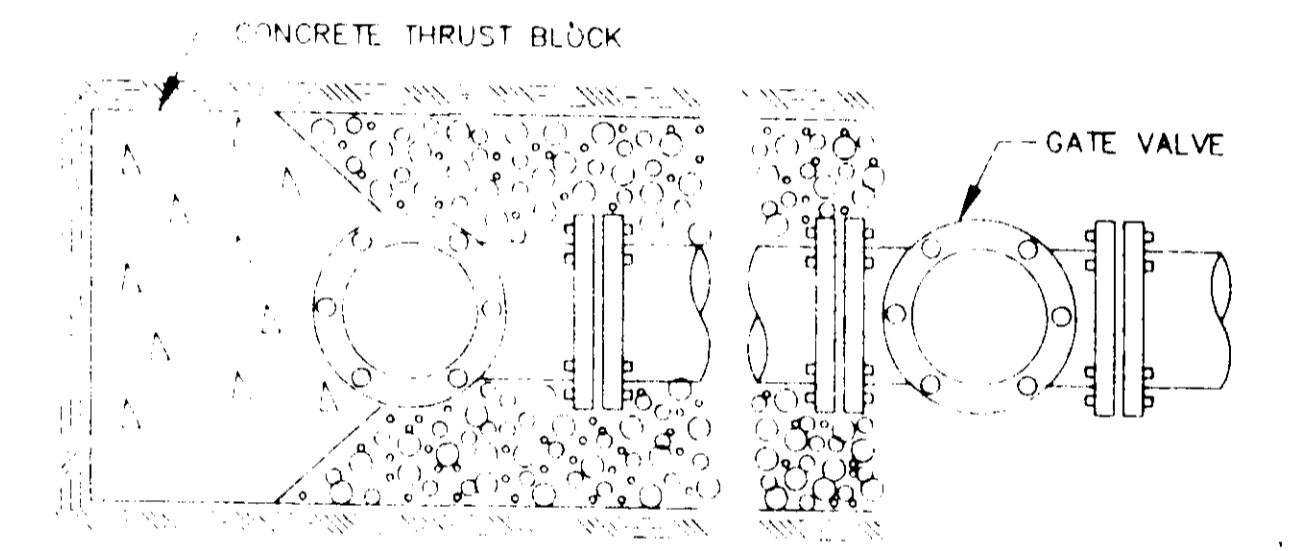
SECTION 2-2

TYPICAL AIR OR AIR VACCUUM RELEASE VALVE INSTALLATION WITH MANHOLE

NOT TO SCALE



ELEVATION



PLAN

TYPICAL FIRE HYDRANT INSTALLATION

NOTE: GATE VALVES WILL BE REQUIRED ON ALL FIRE HYDRANT LEGS.
N.T.S.

BEARING AREA IN SQ. FT.

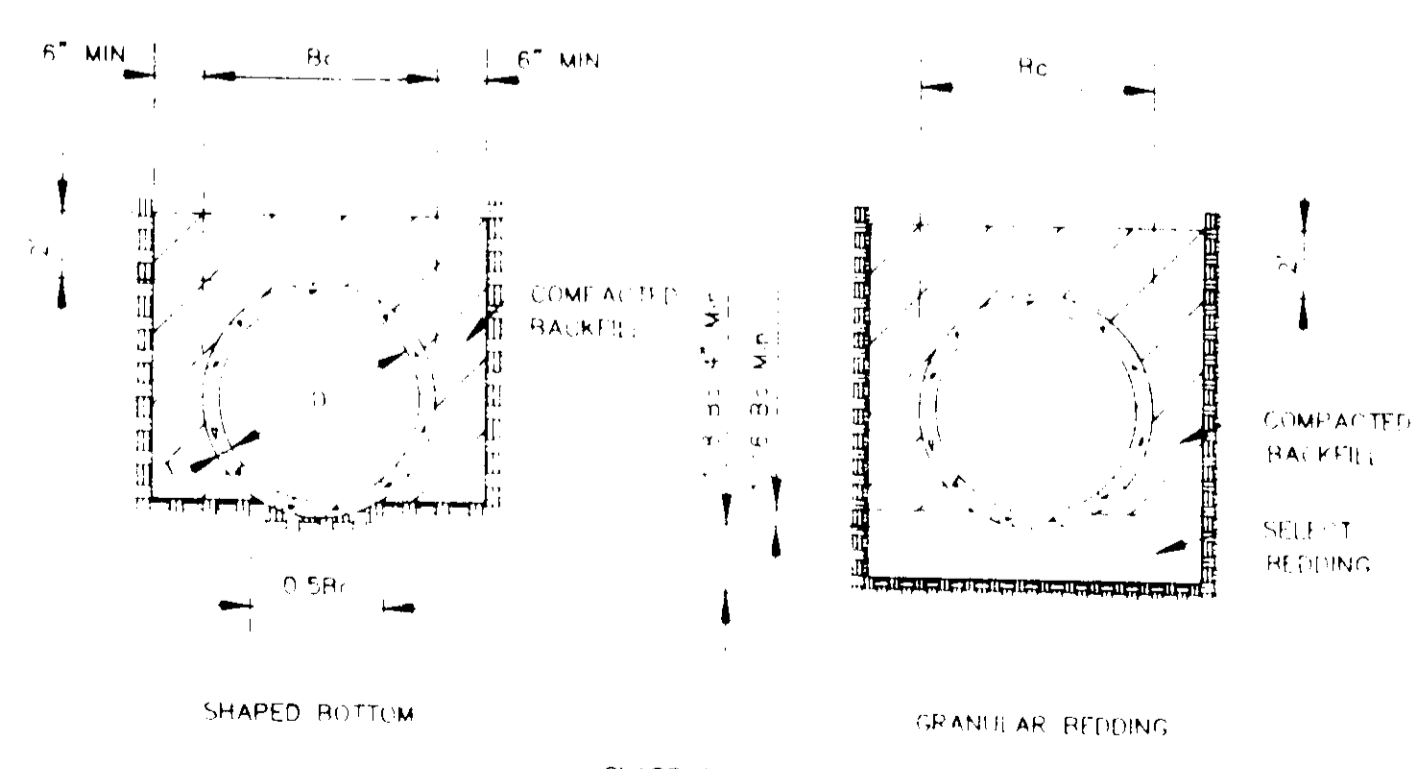
NOMINAL PIPE DIAMETER (IN)	DEAD-END OR TEE	90° BEND	45° BEND	22 1/2° BEND	11 1/4° BEND
6	2.5	3.0	2.0	2.0	2.0
8	4.0	6.0	3.0	2.0	2.0
10	6.0	9.0	5.0	2.5	2.0
12	9.0	11.0	6.0	3.5	2.0
14	12.0	18.0	9.0	5.0	2.5
16	16.0	22.5	12.0	6.0	3.0
18	20.0	28.0	15.0	8.0	4.0
20	24.5	34.0	19.0	10.0	5.0
24	35.0	49.0	27.0	14.0	7.0
30	54.0	76.0	41.0	21.0	10.0
36	77.0	108.0	59.0	30.0	15.0
42	104.0	146.0	79.0	40.0	20.0

NOTE: ABOVE VALUES CALCULATED USING P=100 AND ALLOWANCE SOIL BRG = 1500 PSF. FOR DIFFERENT P, MULTIPLY ABOVE VALUES BY P/100.
FOR DIFFERENT SOIL BRG, MULTIPLY ABOVE VALUES BY 1500/S.B.

VERTICAL BENDS

NOMINAL PIPE DIAMETER (IN)	DEAD-END OR TEE	90° BEND	45° BEND	22 1/2° BEND	11 1/4° BEND
6	---	---	26.0(1.0)	14.0(5)	7.0(3)
8	---	---	45.0(1.7)	25.0(9)	13.0(5)
10	---	---	68.0(2.5)	37.0(1.4)	19.0(7)
12	---	---	97.0(3.6)	52.0(1.9)	27.0(1.0)
14	---	---	130(4.8)	70.0(2.6)	36.0(1.3)
16	---	---	168(6.2)	91.0(3.4)	46.0(1.7)
18	---	---	211(7.7)	114(4.2)	58.0(2.2)
20	---	---	259(9.6)	140(5.2)	72.0(2.6)
24	---	---	370(13.7)	200(7.4)	112(3.8)
30	---	---	568(21.1)	308(11.4)	156(5.8)
36	---	---	814(30.1)	440(16.3)	225(8.3)
42	---	---	1100(40.7)	595(22.0)	303(11.2)

NOTE: ABOVE VALUES REPRESENT THE VOLUME OF BLOCKS INCLUDING SOIL LOAD IN CU FT (CU YDS.) THE VALUES WERE CALCULATED USING A P=100 PSI AND A S.F.=1.5. FOR DIFFERENT P, MULTIPLY VALUES BY P/100.



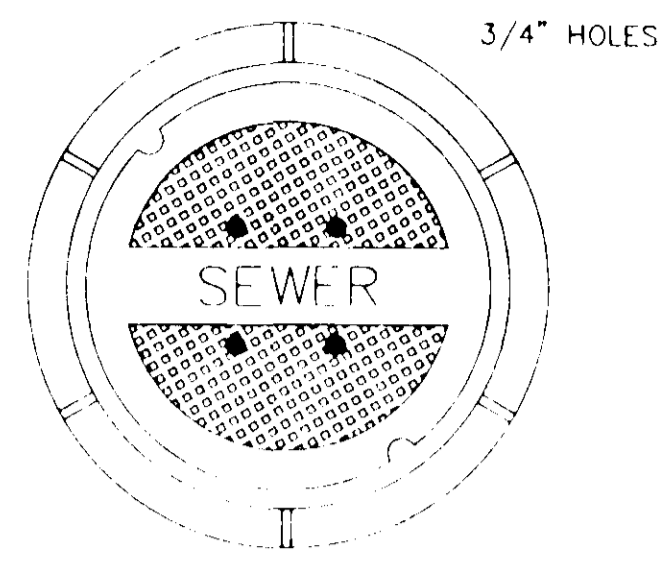
TYPICAL TRENCH DETAILS

N.T.S.

JOLYN SUB.

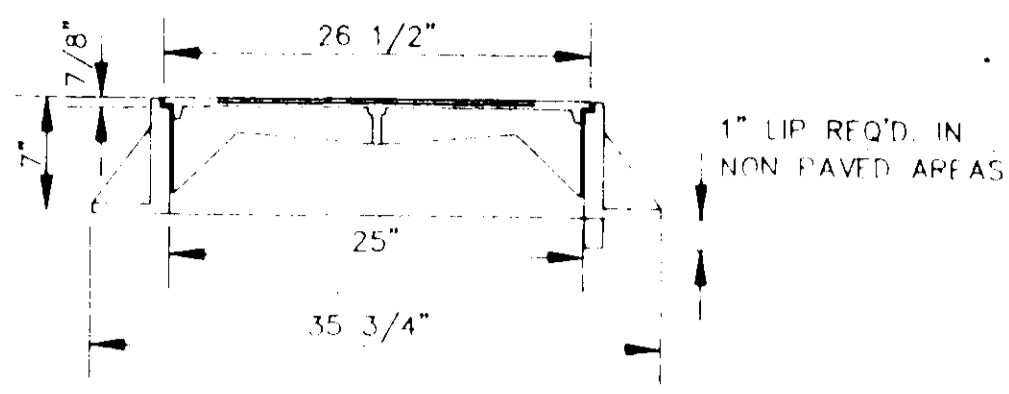
DSGN		DRAWING NO	
DRWN			
CHKD			
SCALE			

8 OF 10

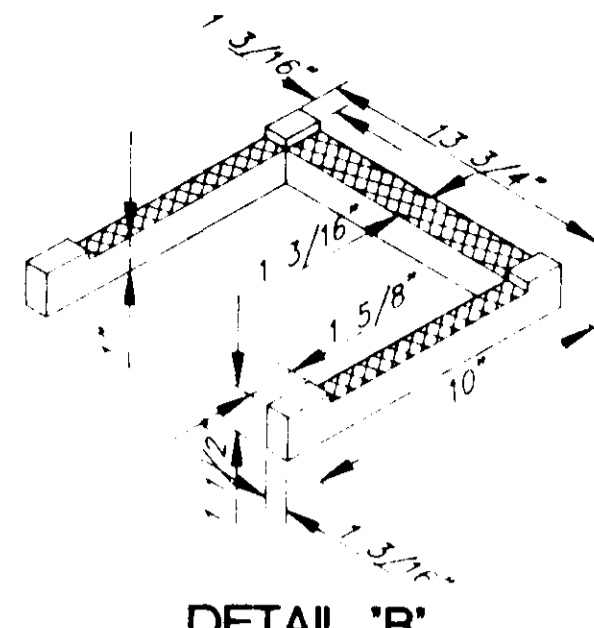


TOP PLAN OF COVER

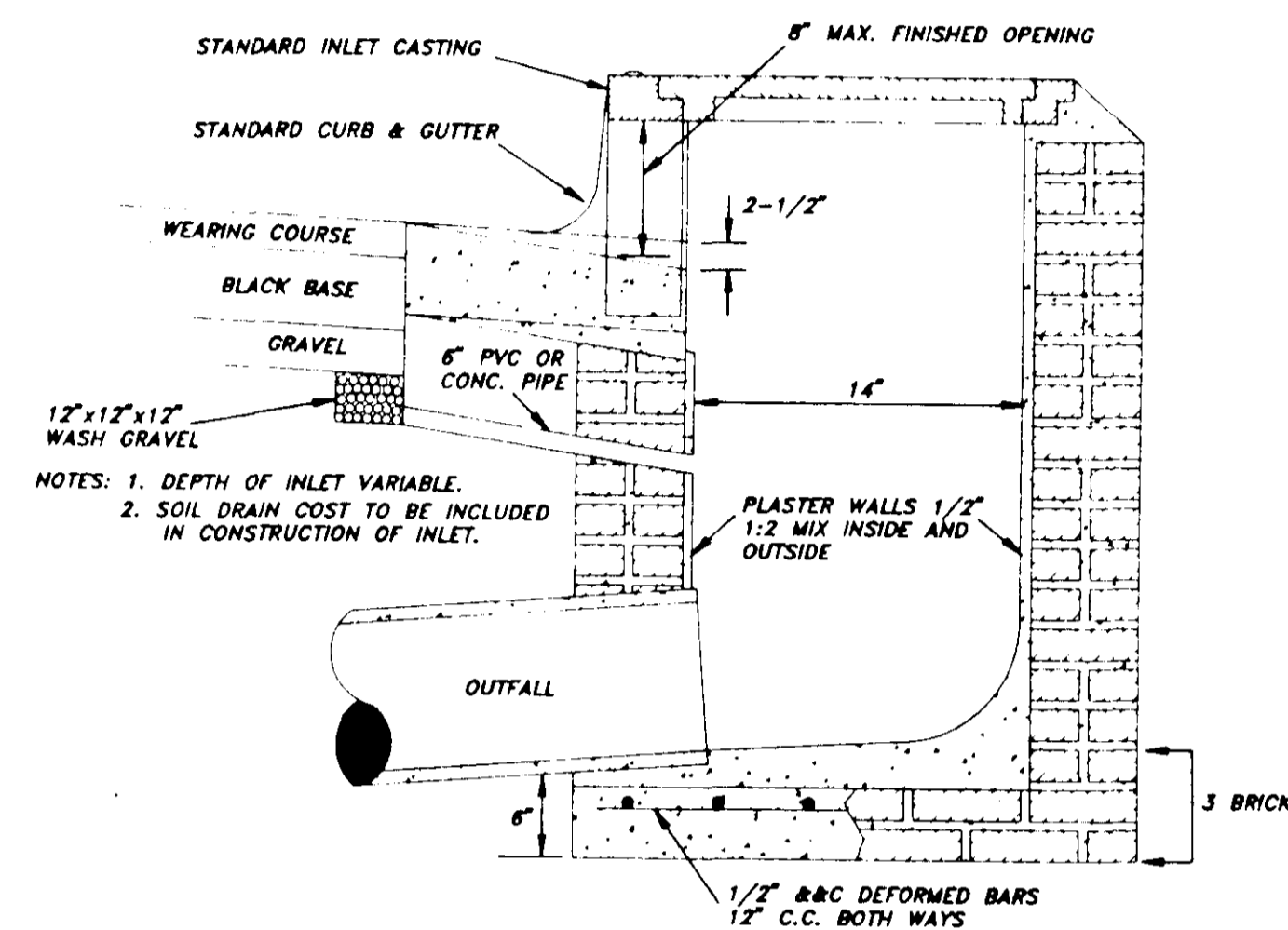
FRAME & COVER WEIGHT 420 LBS.



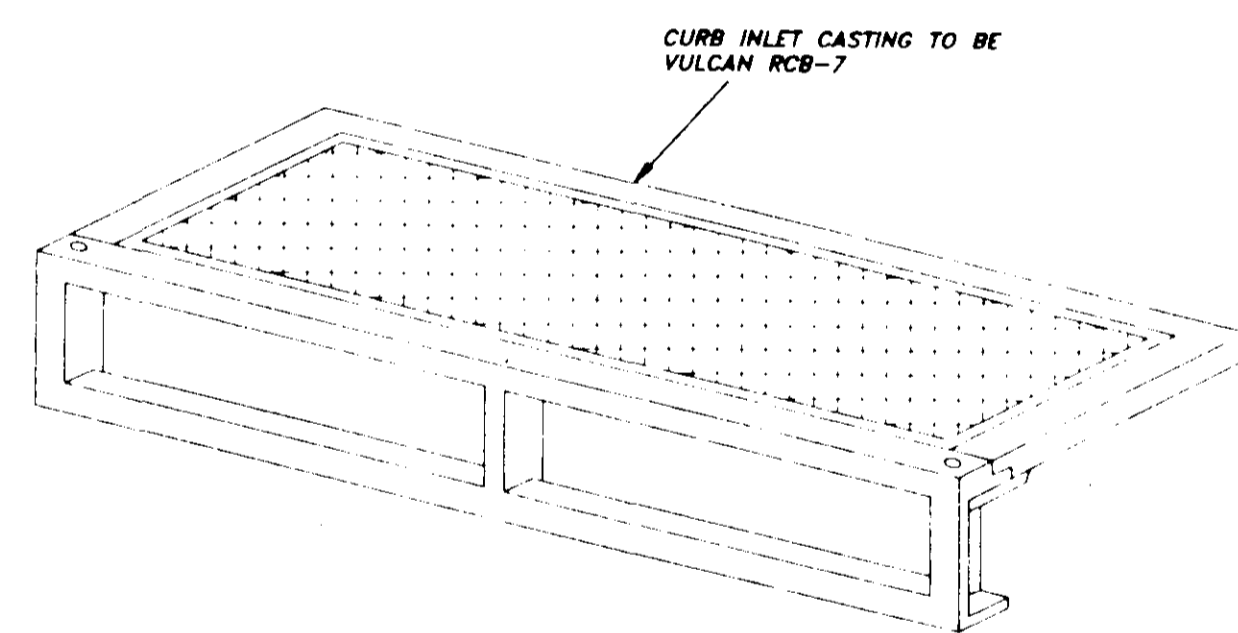
SECTION 1



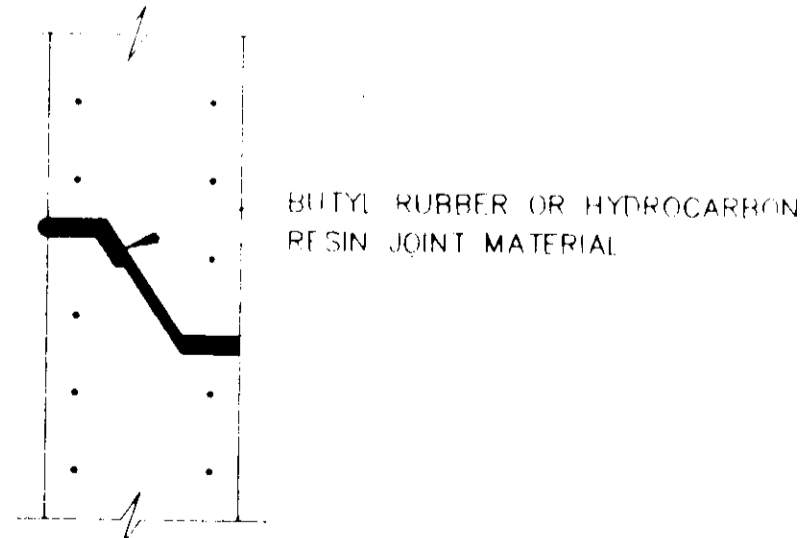
DETAIL 'B'



SECTION OF STANDARD CURB INLET

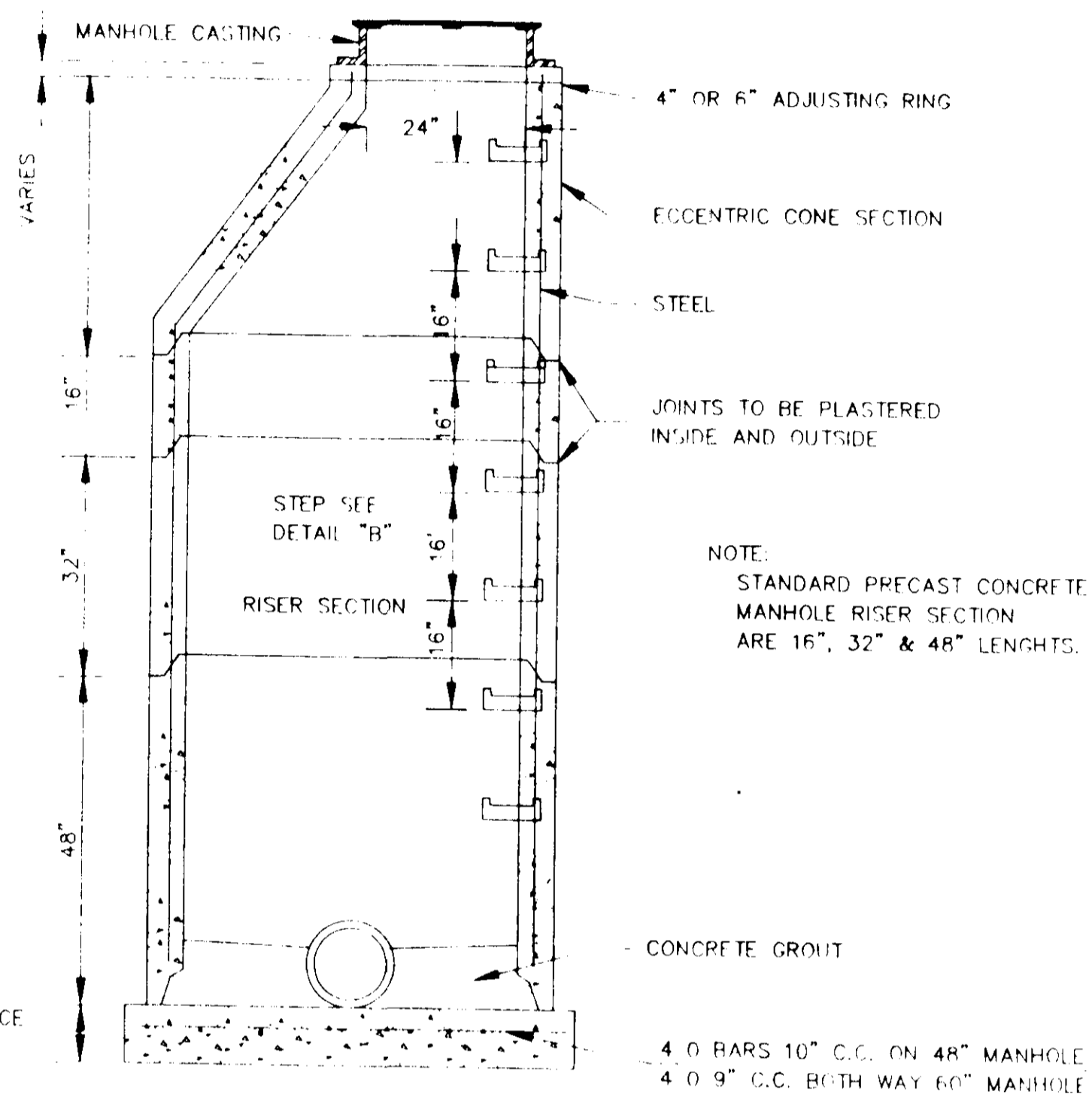


STANDARD CURB INLET CASTING



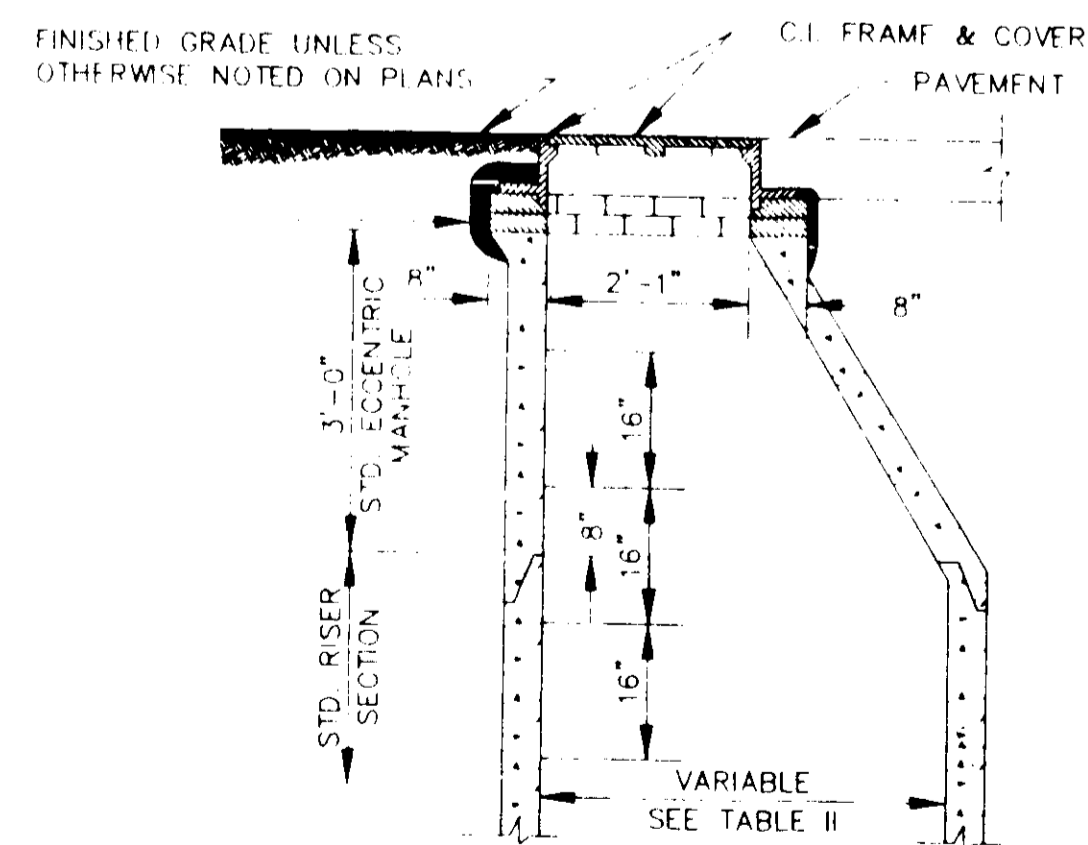
TYPICAL PRECAST CONCRETE MANHOLE JOINT DETAIL

N.T.S.



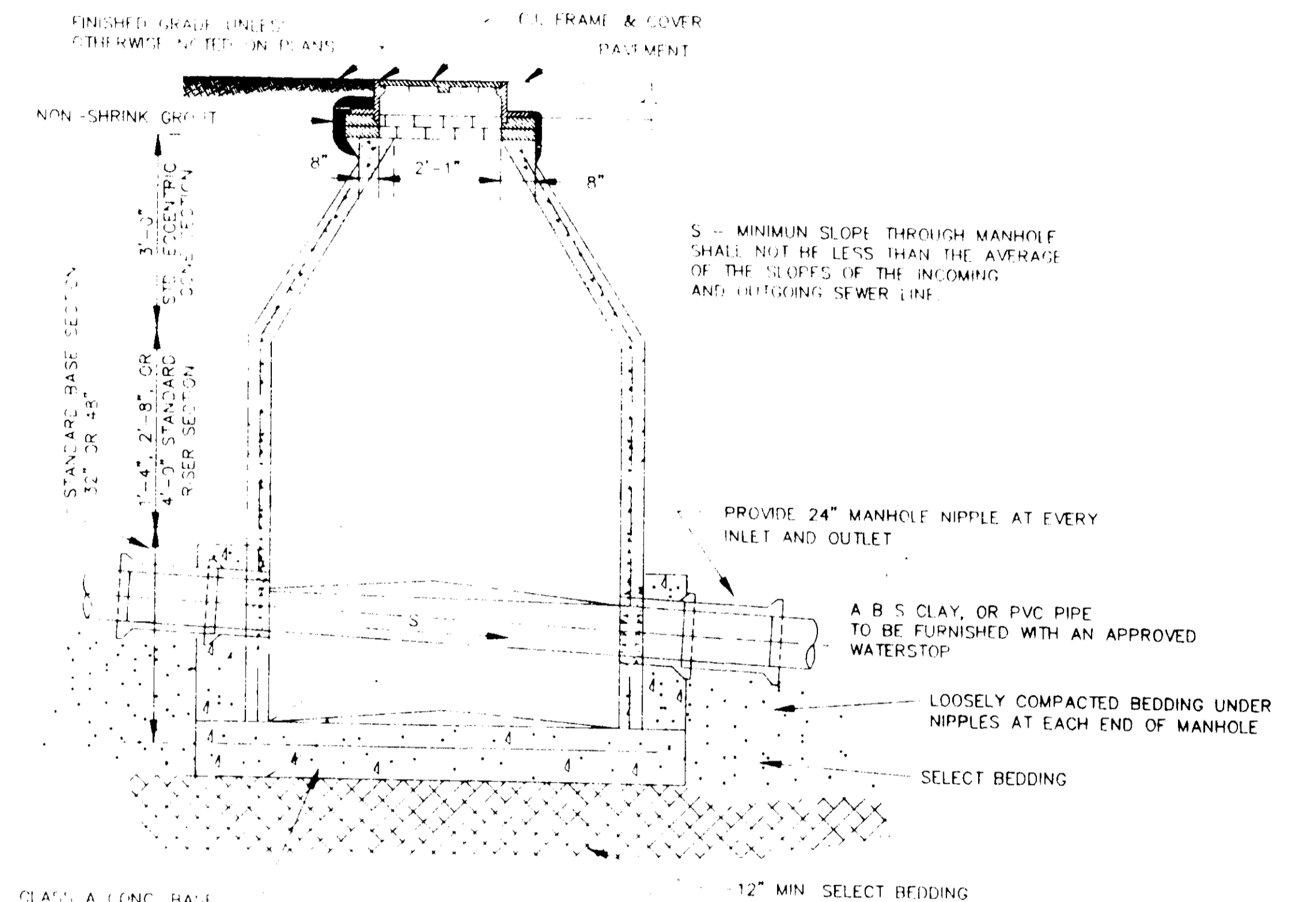
SECTION OF PRECAST CONCRETE MANHOLE

N.T.S.



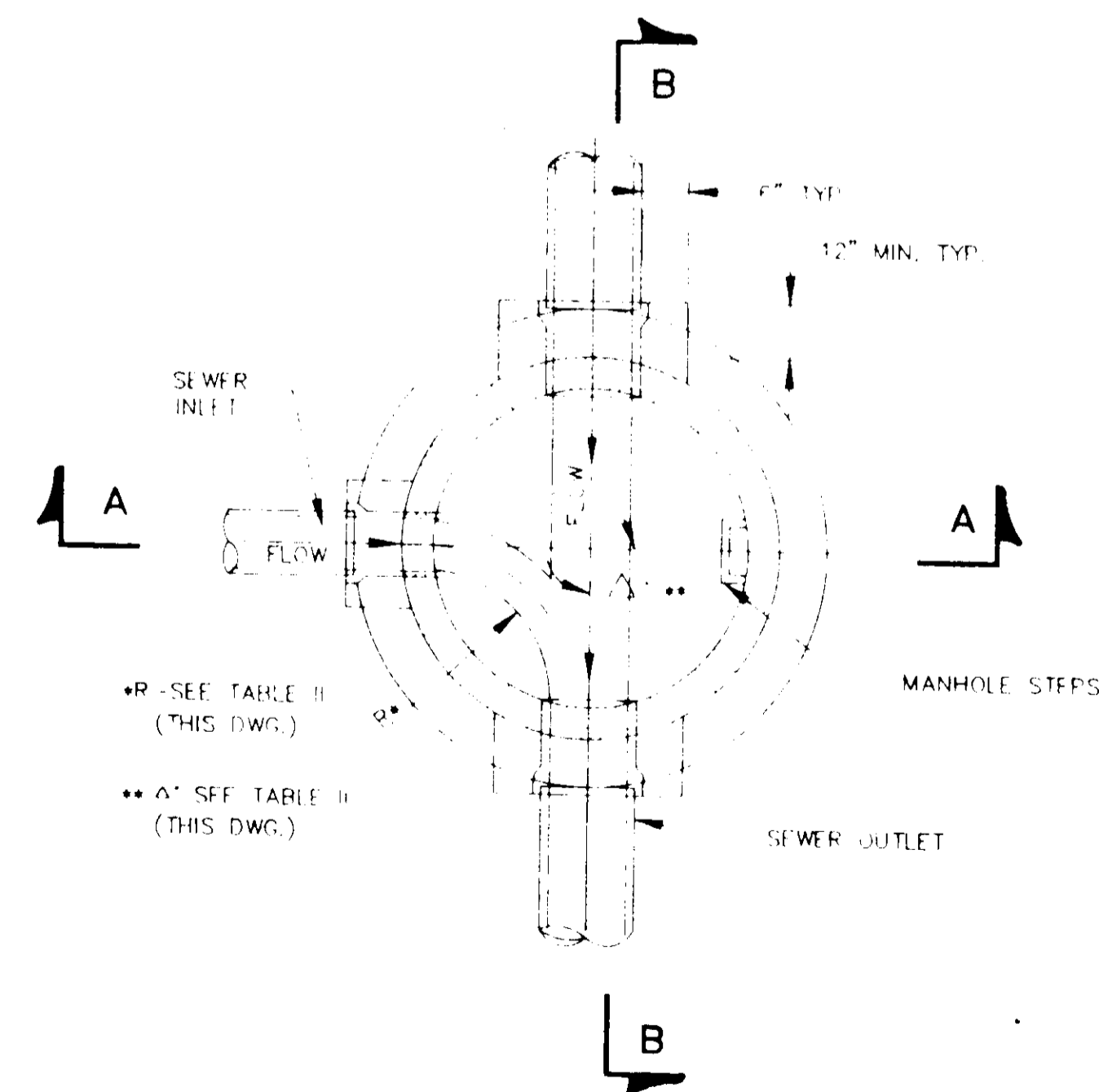
STANDARD ECCENTRIC CONE FOR ALL DIAMETER MANHOLES

N.T.S.



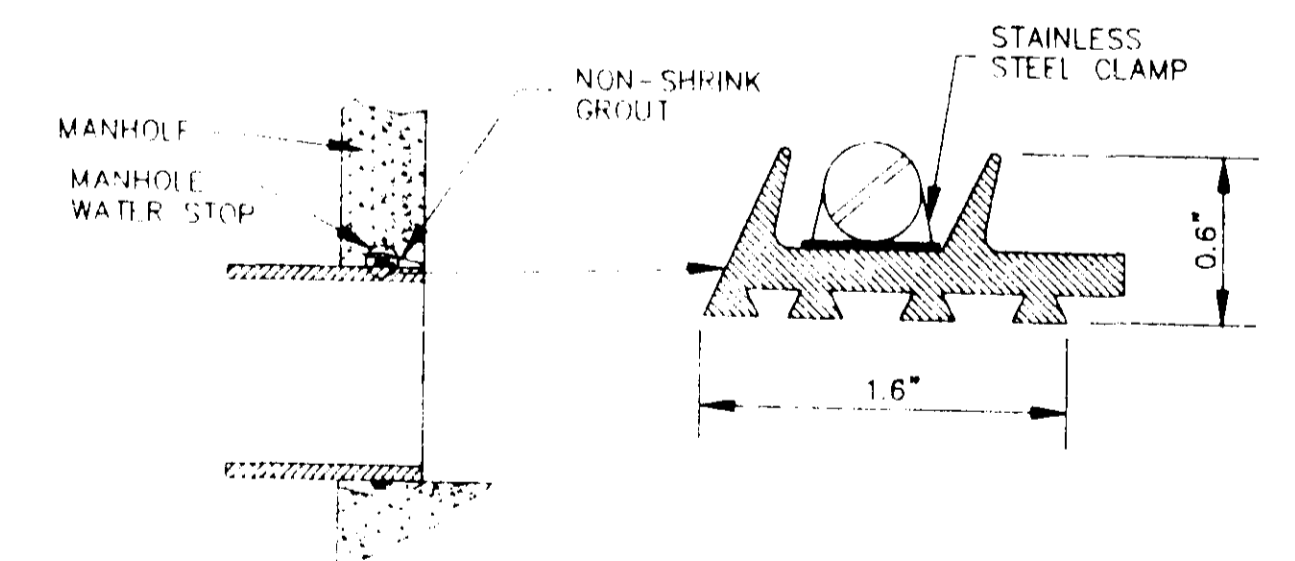
SECTION B-B

N.T.S.



SECTIONAL PLAN STANDARD MANHOLE

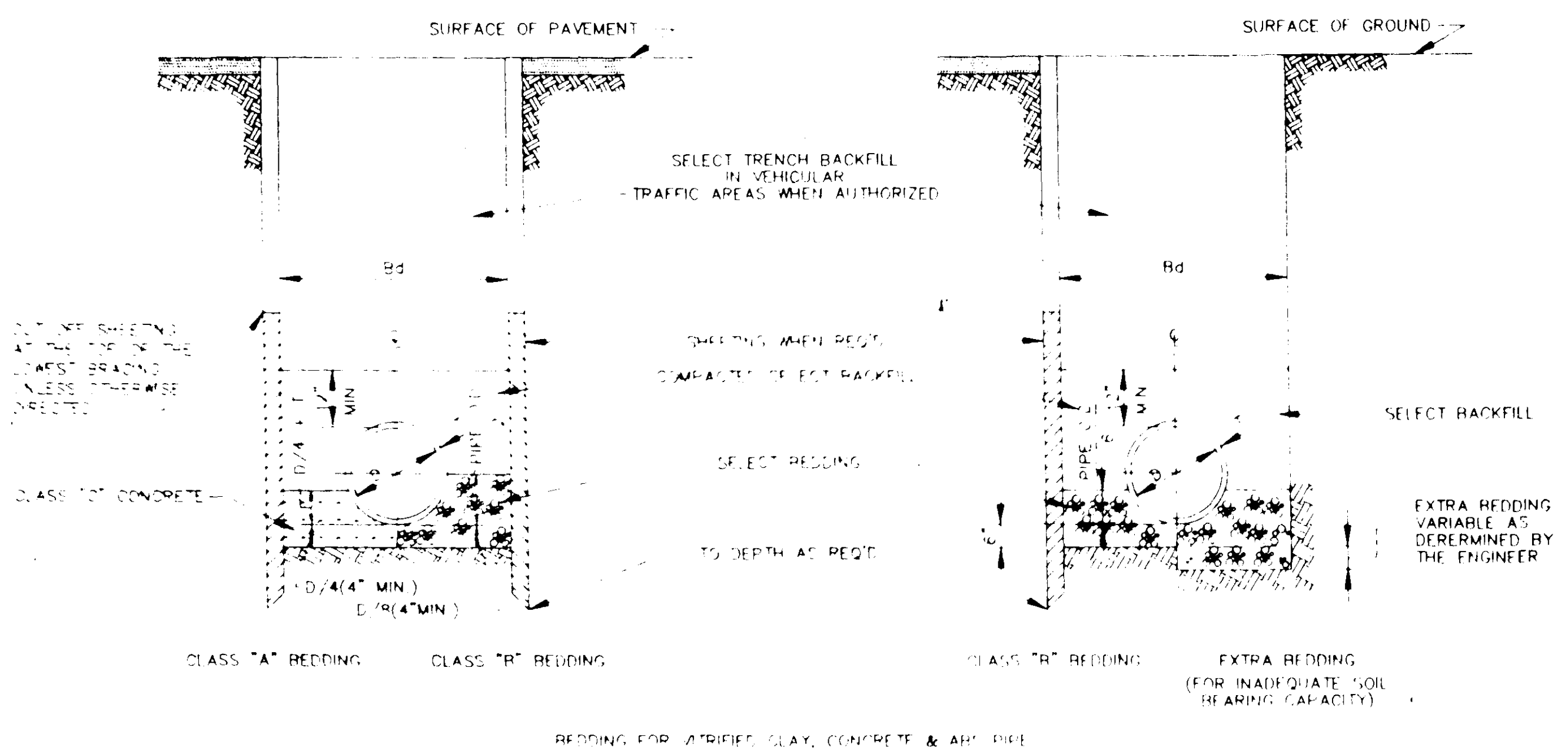
N.T.S.



TYPICAL MANHOLE WATER STOP FOR ABS, CLAY OR PVC PIPE

EXISTING AND "STRADDLE" MANHOLES N.T.S.

JOLYN SUB.	
DSGN	DRAWING NO.
DRWN	9 OF 10
CHKD	
SCALE	



TYPICAL TRENCH DETAILS (FORCE MAIN)

CLASS "A" BEDDING
 MATERIAL SHALL BE CLASS "C" CONCRETE CRADLES. THE PIPE SHALL BE LAID ON CONCRETE SADDLES CONSTRUCTED TO PROVIDE VERTICAL AND LATERAL SUPPORT FOR THE PIPE WHILE THE CRADLE IS BEING PLACED. PIPE SUPPORTS OF WOOD BLOCKS, LOOSE BRICK, ETC., WILL NOT BE PERMITTED. THE CRADLE SHALL BE POURED AFTER THE JOINTS HAVE BEEN MADE. CARE BEING TAKEN TO PREVENT MOVEMENT OF THE PIPE. WHENEVER THE CONTRACTOR PLACES CONCRETE OUTSIDE THE DIMENSIONS SHOWN ON THE DRAWINGS, THE COST OF SUCH CONCRETE WILL BE AT THE CONTRACTOR'S EXPENSE.

CLASS "B" BEDDING
 MATERIAL SHALL BE SELECT BEDDING AS SPECIFIED. MATERIAL SHALL BE CAREFULLY PLACED AND THOROUGHLY COMPACTED BY TAMPING.

CLASS "C" BEDDING (STANDARD BEDDING)
 MATERIAL SHALL BE THE SAME AS FOR CLASS "B" BEDDING AND SHALL BE PLACED AS SHOWN BY STANDARD DETAILS FOR THE TYPE OF PIPE USED.

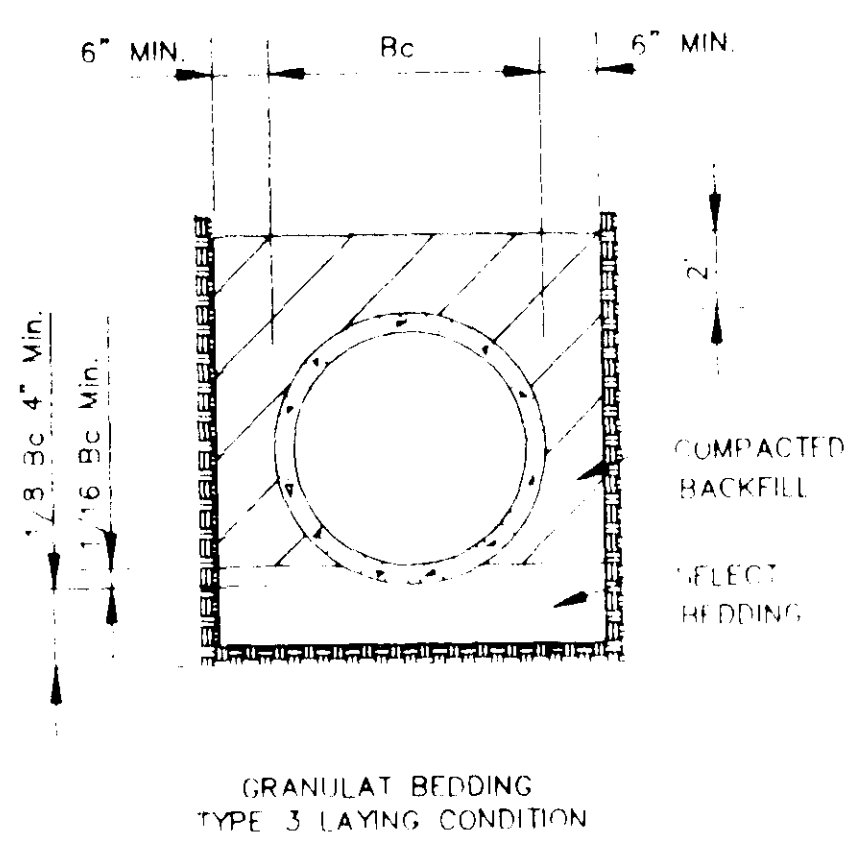


TABLE "A"
 PIPE SIZE

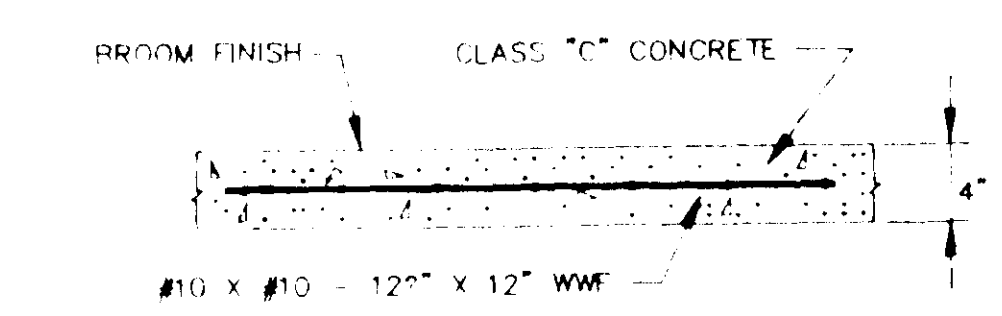
CARRIER PIPE (INCHES)	CASING PIPE	
	DIA. (INCHES)	STEEL PIPE WALL THICK
8	16	1/4"
10	20	3/16"
12	24	3/8"
14 & 16	30	1/2"
18	36	1/2"
24	36	1/2"
30	54	3/4"
36	54	1/2"
42	66	SEE TABLE "B"
48	72	-
54	78	-
60	84	-
66	96	-
72	108	-
84	120	-
96	144	-

TABLE "B"
 GAGES OF LINER PLATE FOR CONTINUOUS LOAD-CARRYING STRUCTURES

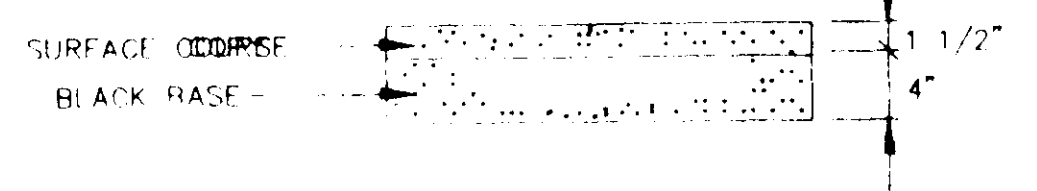
NOMINAL DIA. (INCHES)	HEIGHT OF COVER (FEET)										
	2.5	3	4	5	6	8	10	12	15	18	24
48	12	12	12	12	12	12	12	12	10	8	10
54	12	12	12	12	12	12	12	10	8	7	8
60	12	12	12	12	12	12	10	8	7	5	7
66	12	12	12	12	12	10	8	5	5	5	5
72	12	12	12	12	10	8	7	5	5	5	5
78	12	12	12	12	10	8	7	5	5	5	5
84	12	12	12	10	8	5	5	5	5	5	5
96	12	10	10	10	8	5	5	5	5	5	5
108	10	10	10	8	7	5	5	5	5	5	5
120	10	10	8	8	7	5	5	5	5	5	3
144	8	8	8	8	5	5	5	3	1	1	1

MIN. THICKNESS FOR LINER PLATE CASING IN RAILROAD CROSSING-10 GAGE

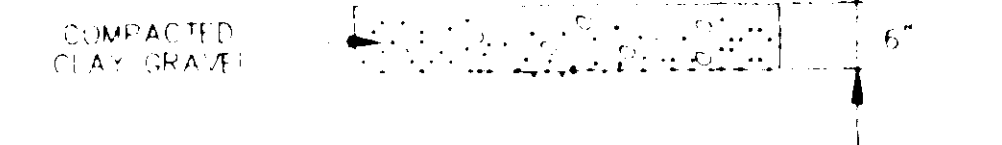
CASING PIPE
 SIZE AND THICKNESS OF PIPE FOR RAILROAD & HIGHWAY CROSSING



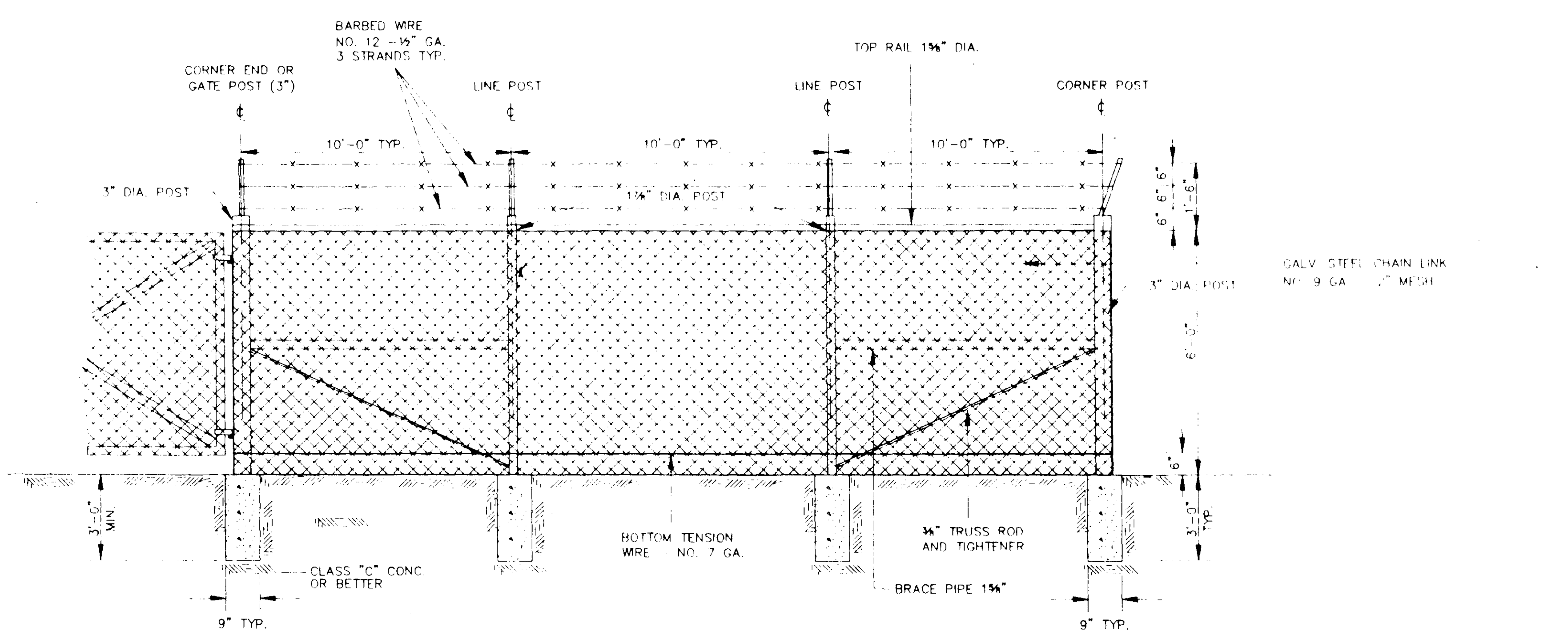
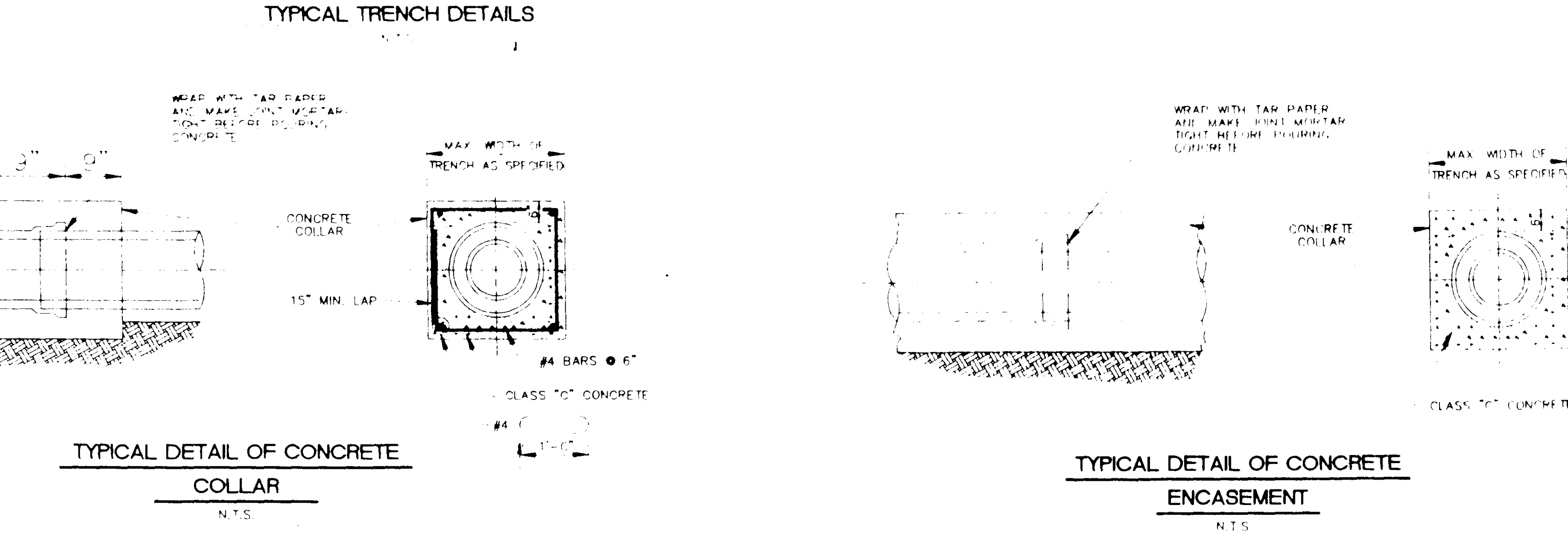
TYPICAL CONC. DRIVEWAY AND SIDEWALK REPAIR



TYPICAL ASPHALT DRIVEWAY REPAIR



TYPICAL GRAVEL DRIVEWAY REPAIR



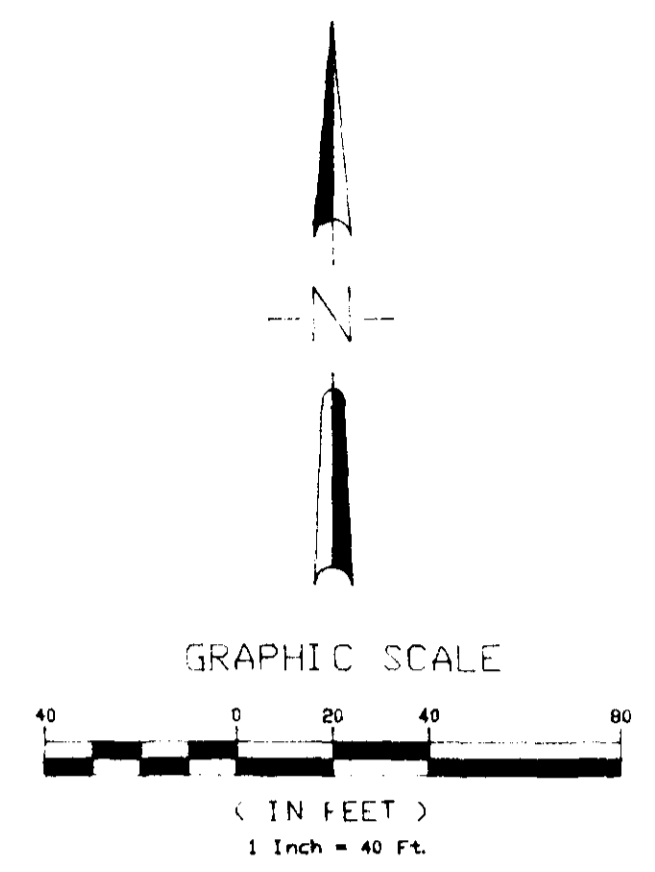
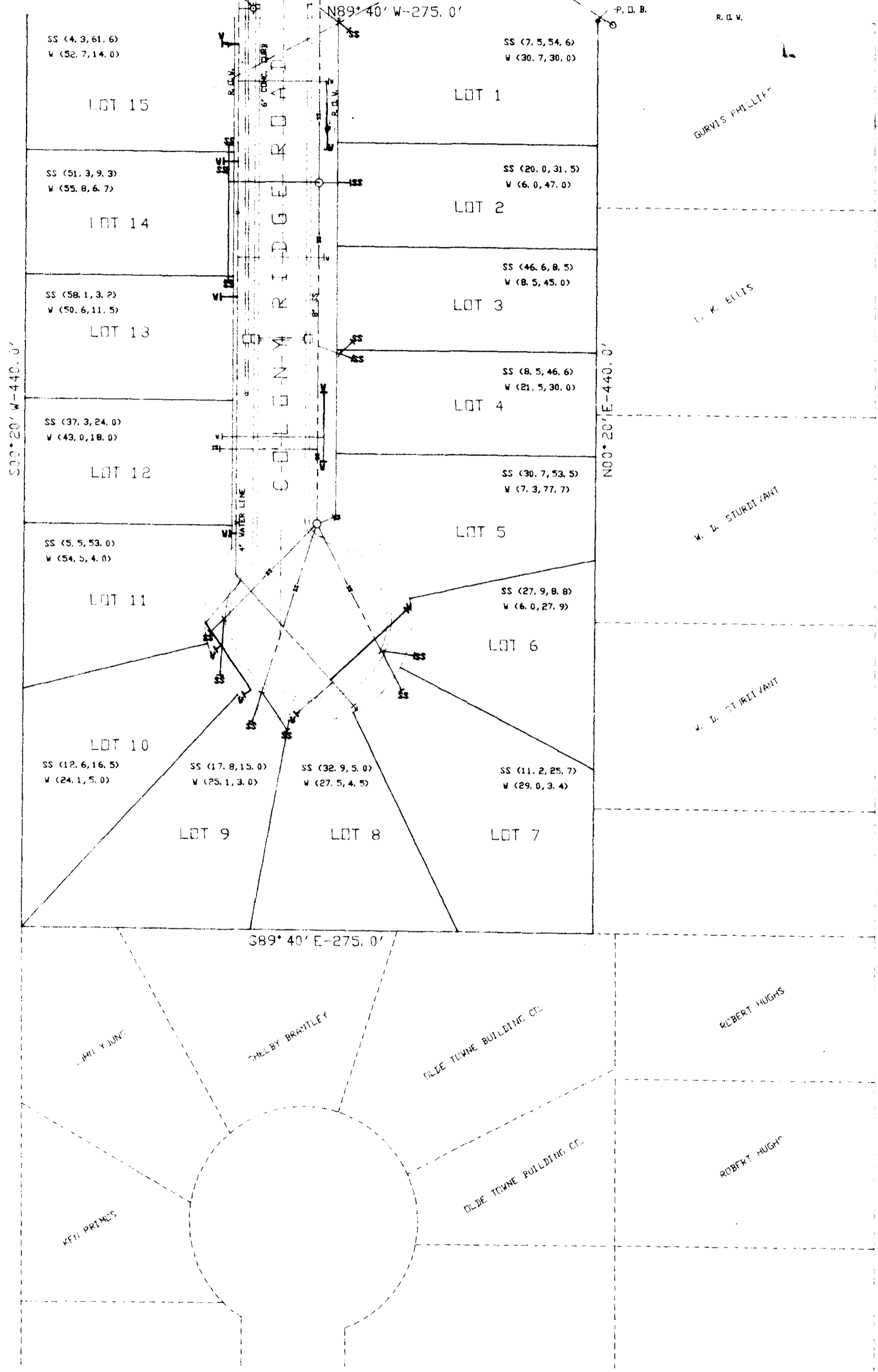
CHAIN LINK FENCE DETAIL
 N.T.S.

JOLYN SUB.

DSGN		DRAWING NO
DRWN		10 of 10
CHKD		
SCALE		

RIDGELAND AVENUE

6" WATER LINE
SANITARY SEWER
OVERHEAD POWER LINE



LEGEND

- PROPOSED PROPERTY LINE
- PROPOSED R.O.W.
- CURB & GUTTER
- WATER CONNECTION
- WATER LINE
- STORM SEWER
- SEWER CONNECTION
- SEWER LINE
- POWER LINE
- FIRE HYDRANT

SS (30.7, 53.5) DENOTES DISTANCES FROM THE SS SERVICE CONNECTION STUB-OUT TO THE LEFT AND RIGHT LOT CORNERS, RESPECTIVELY FACING THE LOT FROM COLONY RIDGE ROAD.

W (7.3, 77.6) DENOTES DISTANCES FROM THE WATER SERVICE CONNECTION STUB-OUT TO THE LEFT AND RIGHT LOT CORNERS, RESPECTIVELY FACING THE LOT FROM COLONY RIDGE ROAD.

STEVENSON STREET

NOTES:

1. TOTAL PARCEL AREA IS 2.78 ACRES.
2. THIS PROPERTY IS SITUATED IN ZONE 'C', NOT A FLOOD HAZARD AREA, ACCORDING TO MAP NO. 28110-0005C, DATED 9/30/1980.
3. SURVEY DATA BASED ON INFORMATION PROVIDED IN DRAWING NO. 10278-2 OF 10 PREPARED BY KARL P. LONG, P.E.
4. STREET, STORM SEWER, WATER AND SEWER ARE IN PLACE. STUBDOUTS WILL BE ADDED TO SERVE ADDITIONAL LOTS.
5. CONSTRUCTION RECORD FIELD INFORMATION PROVIDED BY TRIANGLE CONSTRUCTION CO.

CONSTRUCTION RECORD DRAWING

NO.	DATE	REVISIONS	BY	OWNER: KEN PRIMOS RIDGELAND, MISSISSIPPI
1	4/8/90	CONSTRUCTION RECORD DRAWING	BY	COLONY RIDGE SUBDIVISION
				UTILITY PLAN
				DIVERSIFIED CONSULTANTS, INC.
				JACOBSON, MISSISSIPPI
				DESIGNED BY: AA
				REVIEWED BY: DSR

331
PWP-00 329