

Dial of Record for Lake Trace Part 9, indicates NE Corner of Section 6 as being 662.91', N 04° 02' 00\"/>

- NOTES:**
1. Section Line Location is consistent with Historical Data for Highland Colony Subdivision, Madison County.
 2. Recent Subdivision Development in Hinds County Apparently References County Line as Centerline of County Line Road Rather than as Depicted by This Survey.
 3. Fractional Distances to the North in Madison County are generally within one foot of the Theoretical.
 4. The Following Subdivisions are Tied to the Northeast Corner of Section 6 or the Northwest Corner of Section 6, which by Dimensions Indicated Thereon and Field Verified, is the E-E Intersect of Pear Orchard and County Line Roads:
 - Avery Gardens
 - Moss Forest
 - North Point - Part I & II
 - Robinwood

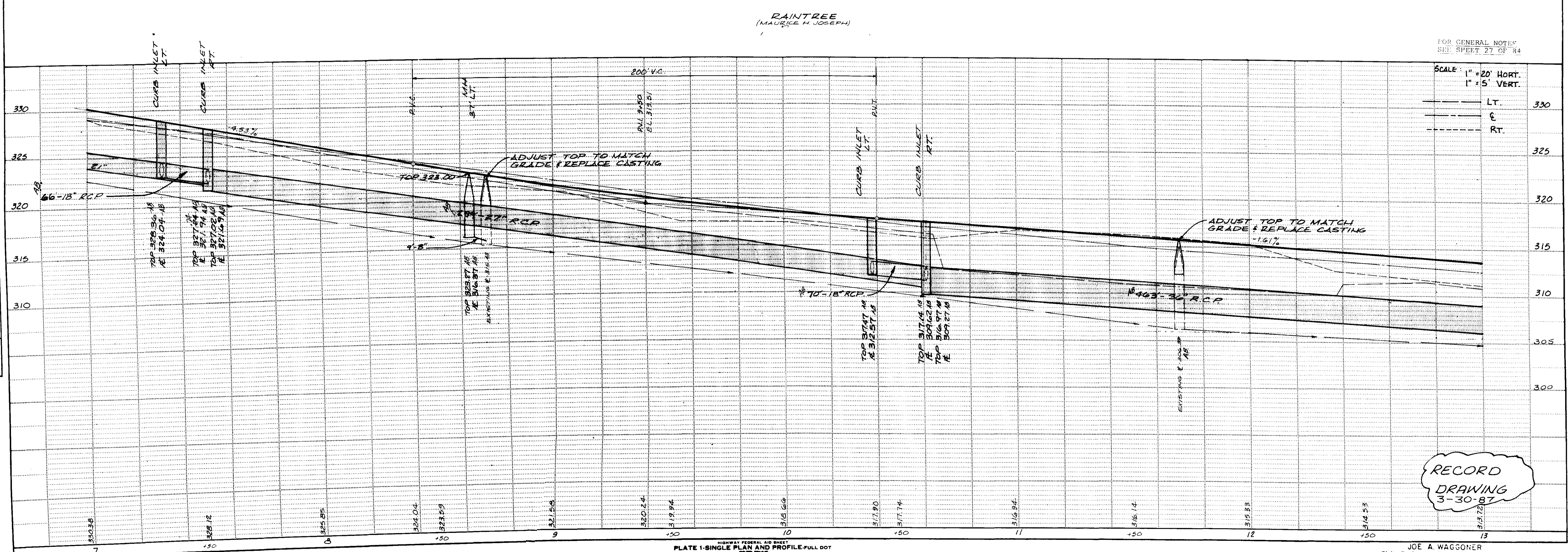
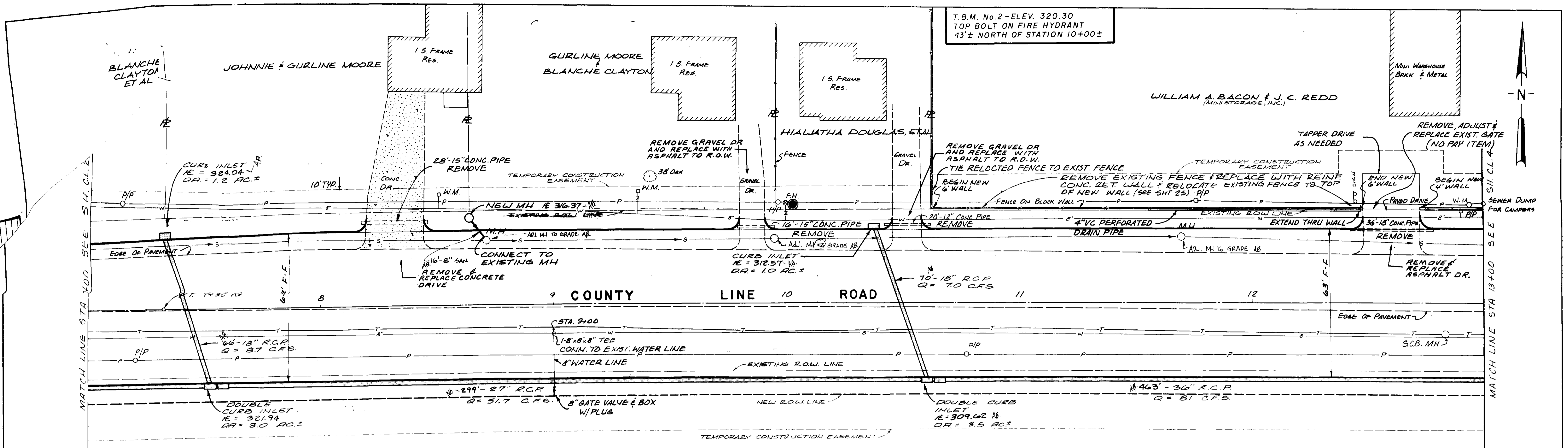
NOTE: This Plat Prepared for in-House Use by Cadillac Fairview and, City of Ridgeland Only.

PLAT OF SURVEY OF MADISON-HINDS COUNTY LINE			
Sited in Sections 31 and 32, T7N, R2E, Madison Co, and in Sections 5 and 6, T6N, R2E, Hinds Co., Mississippi			
JOE A. WAGGONER Civil Engineer - Brandon / Jackson, Miss.			
DRAWN BY: MAL	DATE: 8-18-01	SHEET NO. 1 OF 1	
CHECKED BY: JAW	SCALE: 1" = 200'		

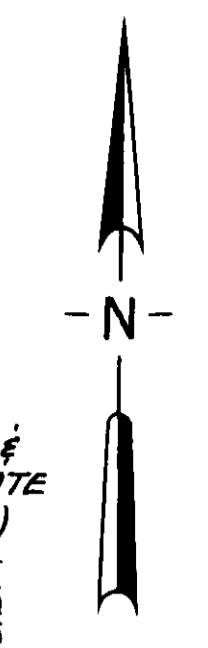
PWP-00319

PLAN
 SURVEYED
 PLOTTED
 CHECKED
 DATE

PROFILE
 SURVEYED
 PLOTTED
 CHECKED
 DATE



T.B.M. No. 2 - ELEV. 320.30
 TOP BOLT ON FIRE HYDRANT
 43'± NORTH OF STATION 10+00±



FOR GENERAL NOTES
 SEE SHEET 27 OF 84

SCALE: 1" = 20' HORT.
 1" = 5' VERT.

LT. 330
 E 325
 RT. 320

315
 310
 305
 300

RECORD
 DRAWING
 3-30-87

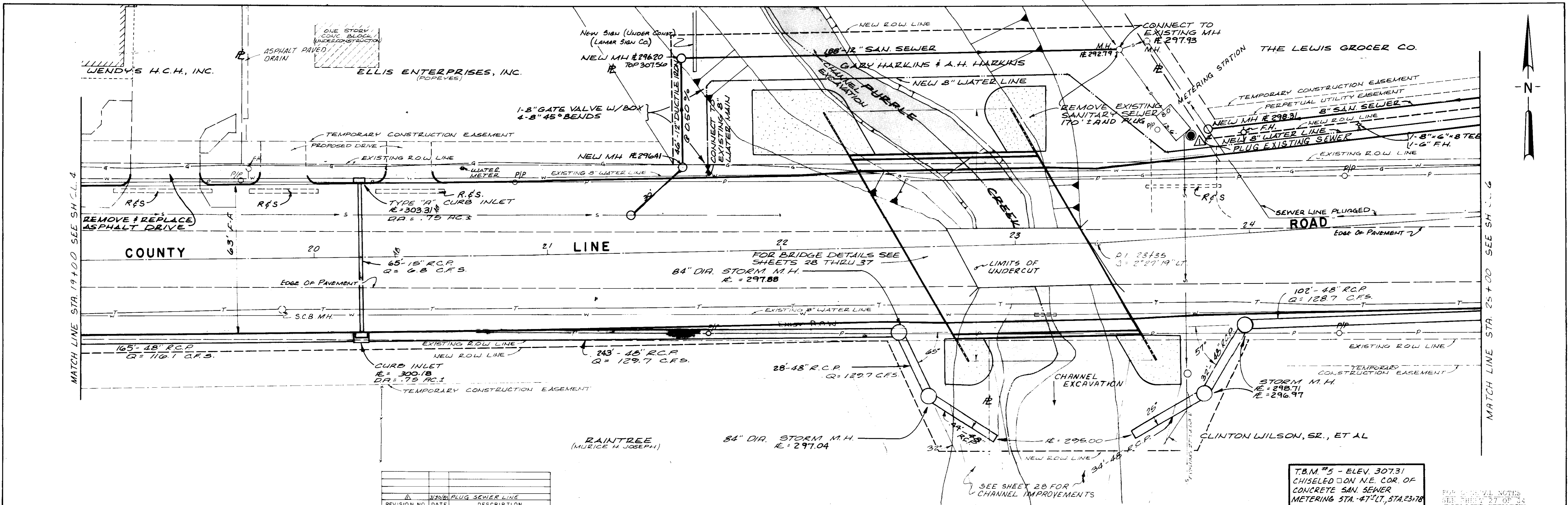
HIGHWAY FEDERAL AID SHEET
 PLATE 1-SINGLE PLAN AND PROFILE-FULL DOT
 MICHELLE
 PRINTED IN U.S.A.

JOE A. WAGGONER
 Civil Engineer - Brandon, Miss.

SHEET NO.
 C. L. 3 OF 84

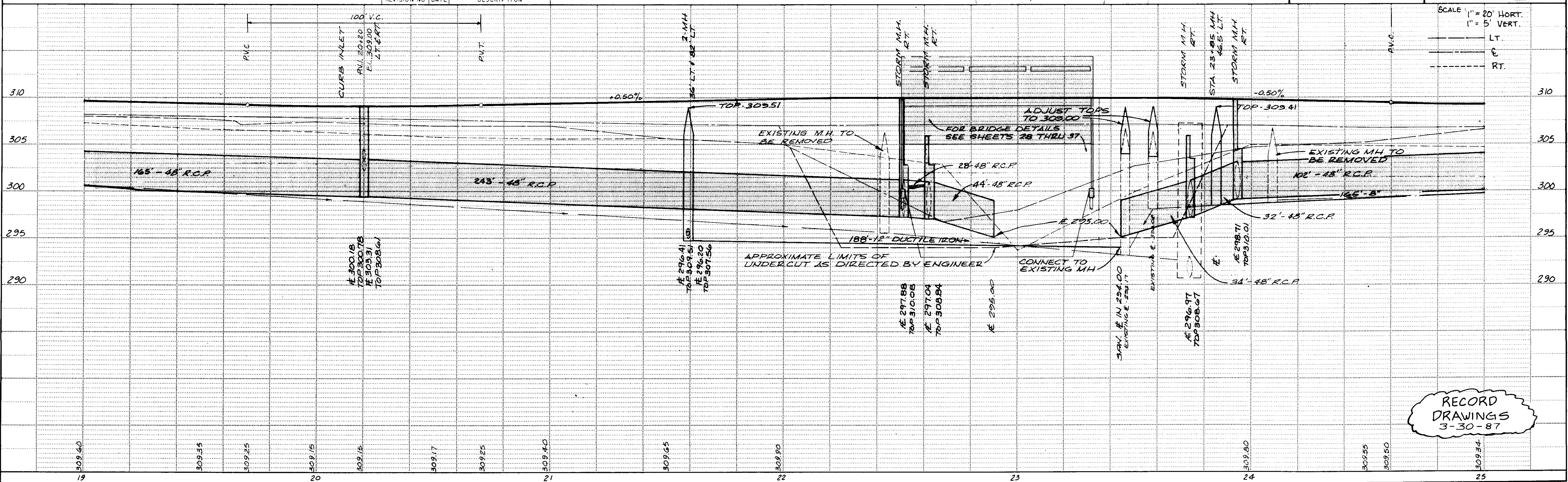
DATE	
BY	
SURVEYED	
PLOTTED	
CHECKED	
BY	
NOTE BOOK	
NO.	

DATE	
BY	
SURVEYED	
PLOTTED	
CHECKED	
BY	
NOTE BOOK	
NO.	



REVISION NO.	DATE	DESCRIPTION
1	3/30/84	PLUG SEWER LINE

T.B.M. #5 - ELEV. 307.31
CHISELED ON N.E. COR. OF
CONCRETE SAN. SEWER
METERING STA. 47+00, STA. 23+78



RECORD
DRAWINGS
3-30-87

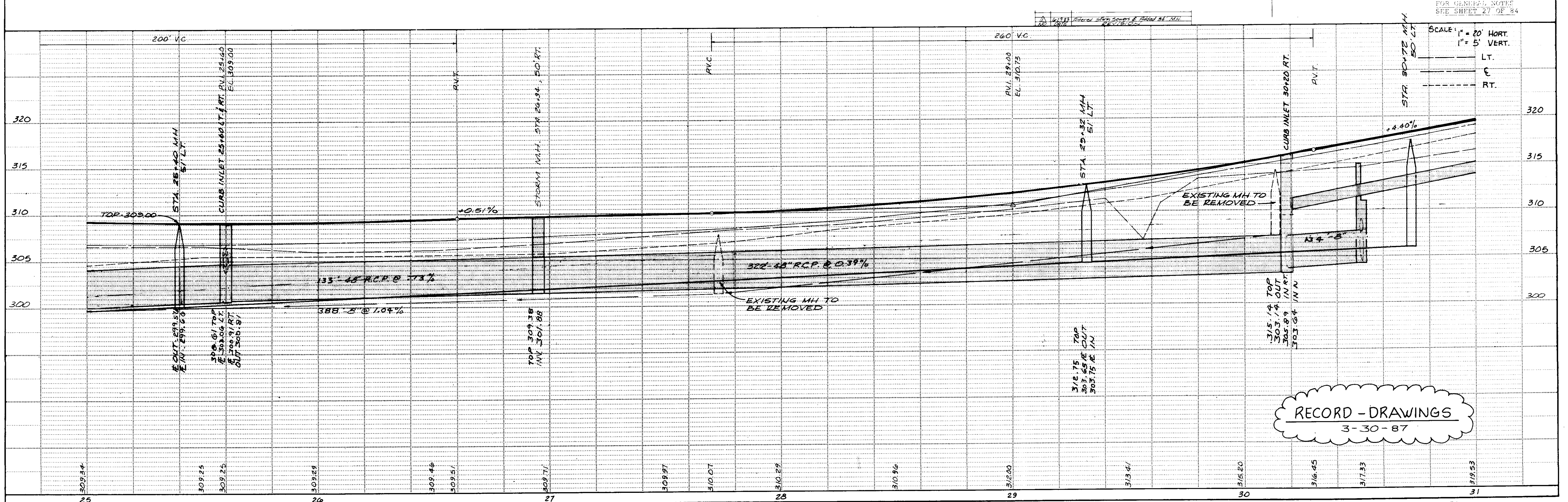
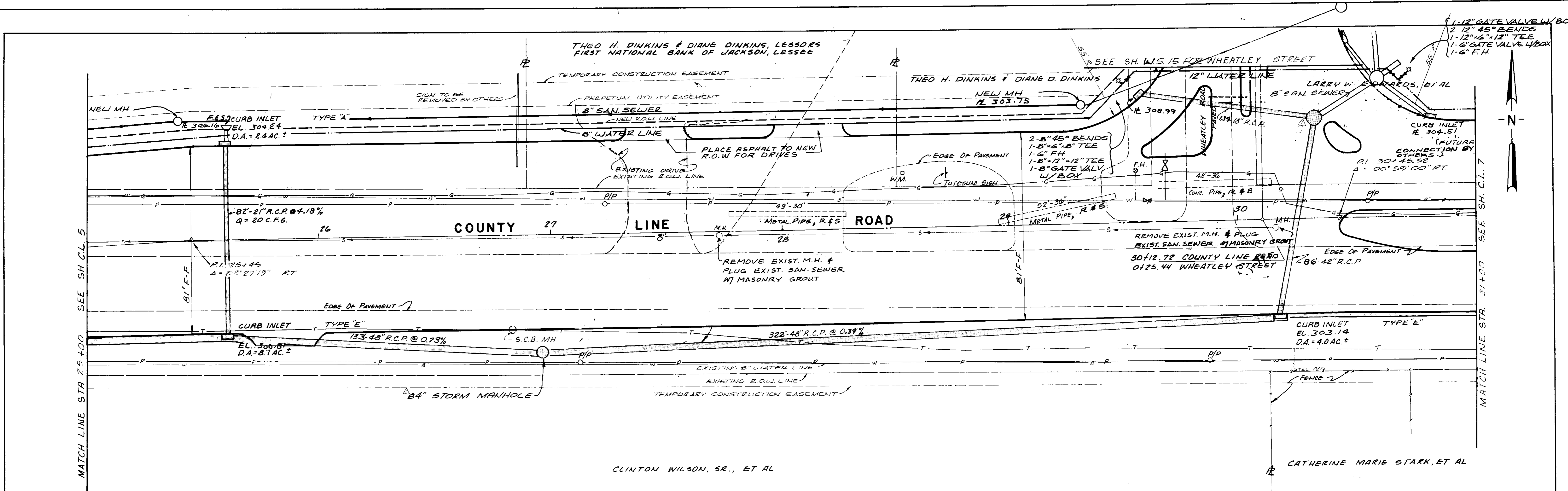
PLATE 1-SINGLE PLAN AND PROFILE-FULL DOT
PRINTED IN U.S.A.

JOE A. WAGGONER
Civil Engineer - Brandon, Jackson, Miss.

SHEET NO.
C.L. 5 OF 84

DATE	
BY	
DESIGNED	
PLOTTED	
ALIGNMENT CHECKED	
NOTE BOOK	
NO.	

DATE	
BY	
DESIGNED	
PLOTTED	
GRADES CHECKED	
NOTE BOOK	
NO.	

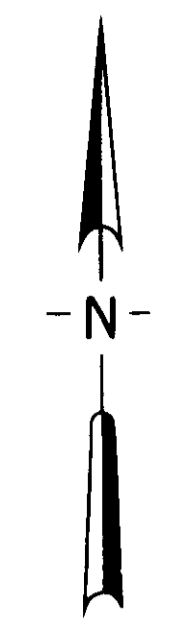


RECORD - DRAWINGS
3-30-87

HIGHWAY FEDERAL AID SHEET
PLATE 1-SINGLE PLAN AND PROFILE-FULL DOT
PRINTED IN U.S.A.

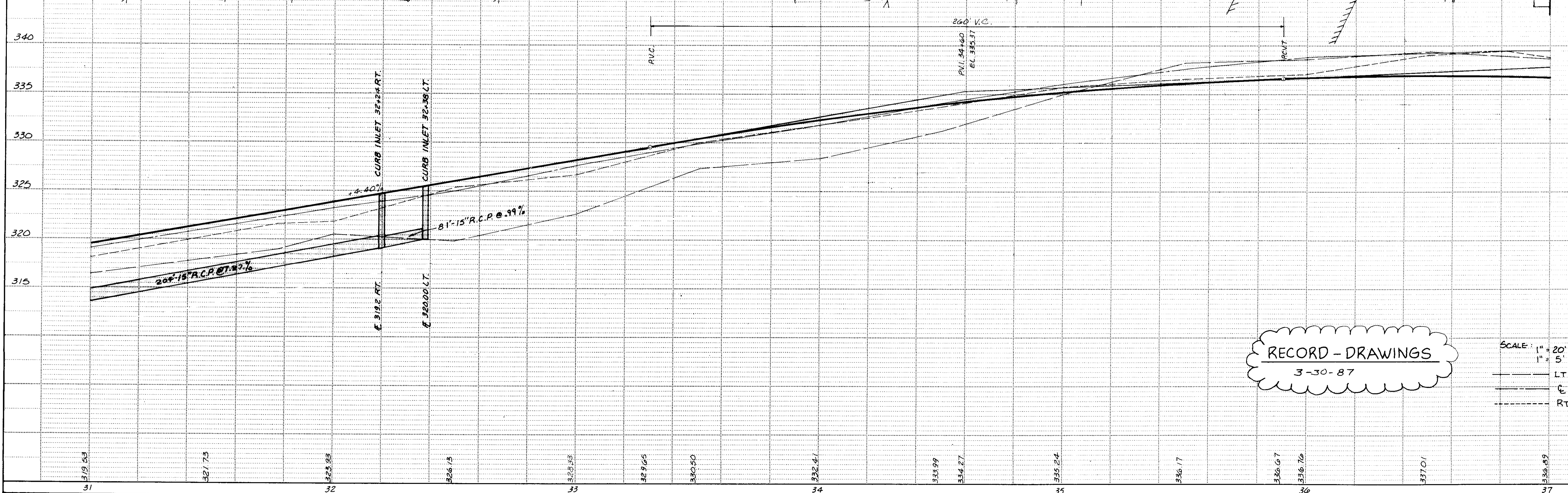
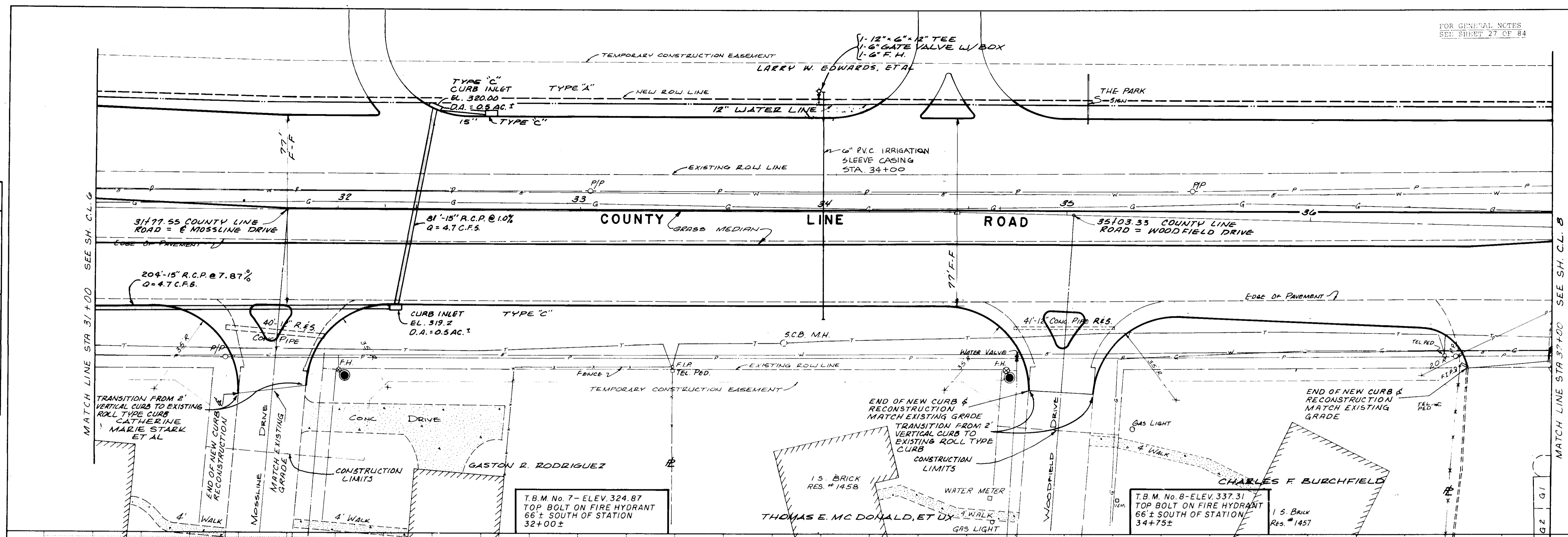
JOE A. WAGGONER
Civil Engineer - Brandon/Jackson, Miss.

SHEET NO.
CL 6 OF 84



PLAN	DATE
SURVEYED	BY
PLOTTED	BY
NOTED	BY
CHECKED	BY
NO.	

PROFILE	DATE
SURVEYED	BY
GRADES CHECKED	BY
NOTED	BY
STRUCTURE NOTATIONS CHECKED	BY
NO.	



RECORD - DRAWINGS
3-30-87

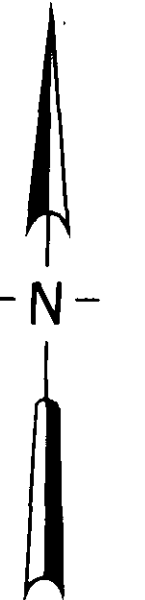
SCALE: 1" = 20' HORT.
1" = 5' VERT.
— LT.
— C.
- - - RT.

REVISION NO.	DATE	DESCRIPTION
1	3/30/87	END RECONSTRUCTION

LARRY J. EDWARDS, ET AL
(FUTURE SITE OF "THE PART" MALL)

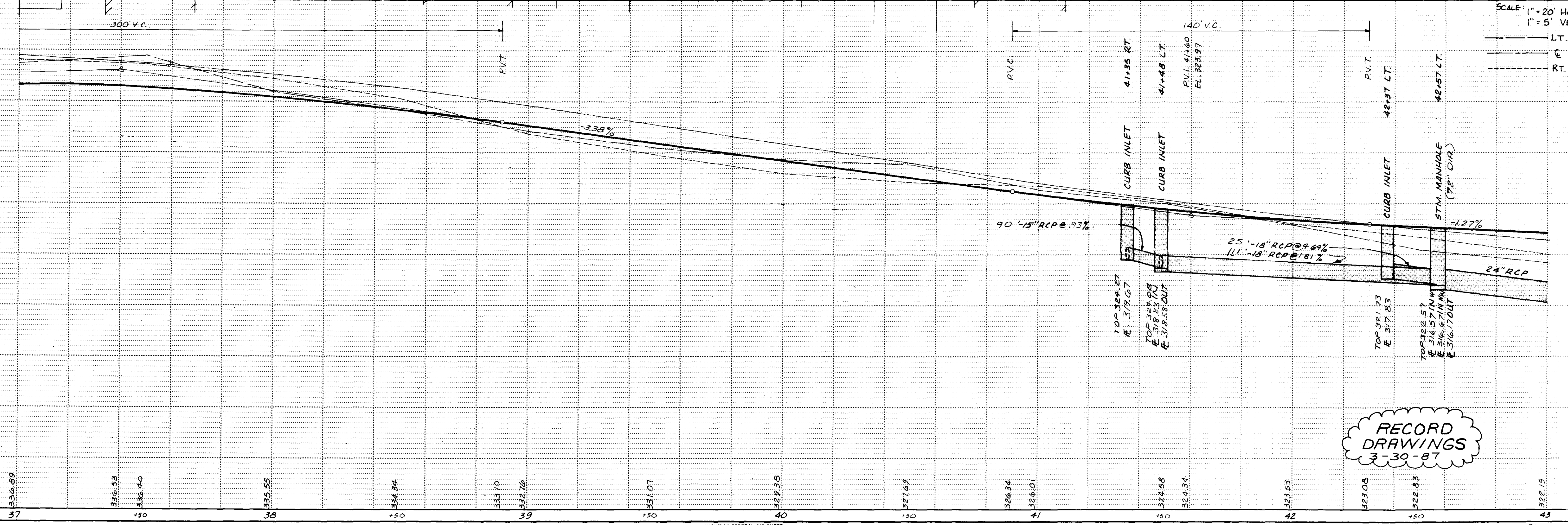
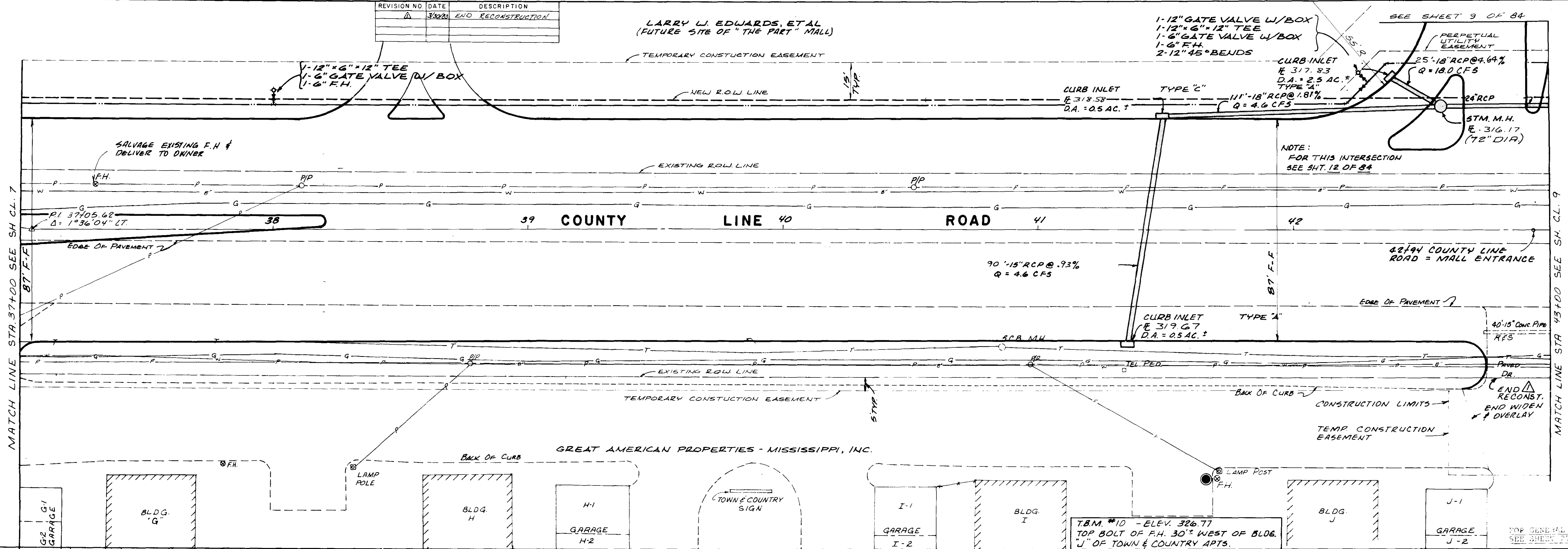
- 1-12" GATE VALVE W/BOX
- 1-12" x 6" x 12" TEE
- 1-6" GATE VALVE W/BOX
- 1-6" F.H.
- 2-12" 45° BENDS

SEE SHEET 9 OF 84



PLAN	DATE	BY
DESIGNED		
ALIGNED		
CHECKED		
RT OF WAY CHECKED		
NO.		

PROFILE	DATE	BY
SURVEYED		
PLOTTED		
GRAPHS CHECKED		
STRUCTURE NOTATION CHECKED		
NO.		



RECORD DRAWINGS
3-30-87

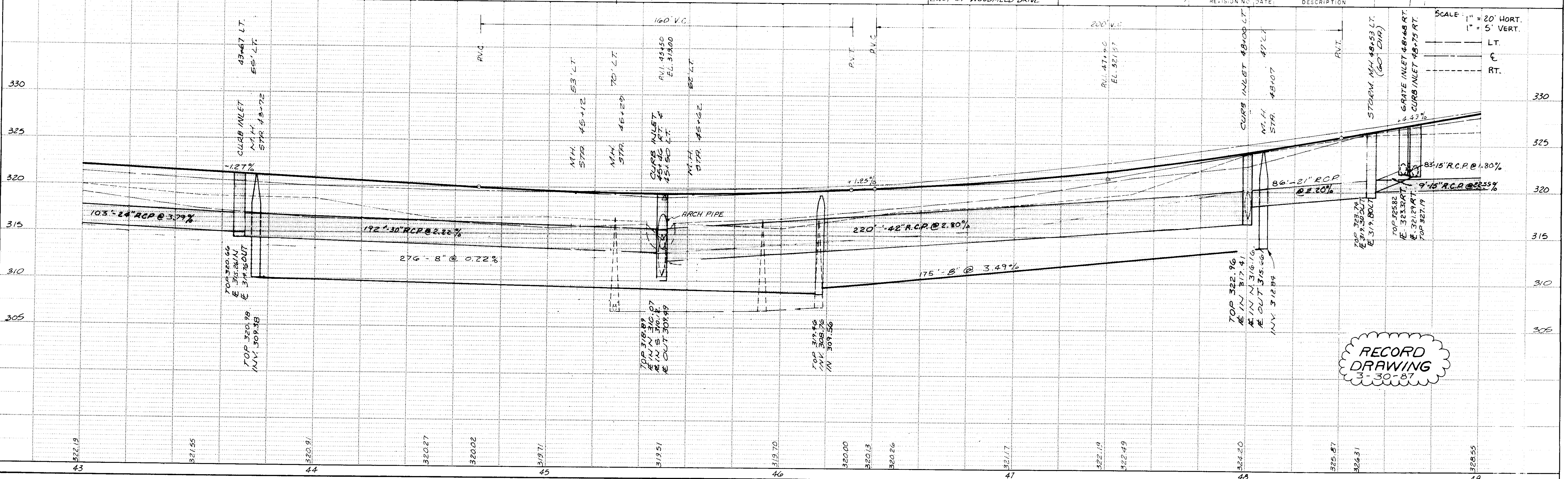
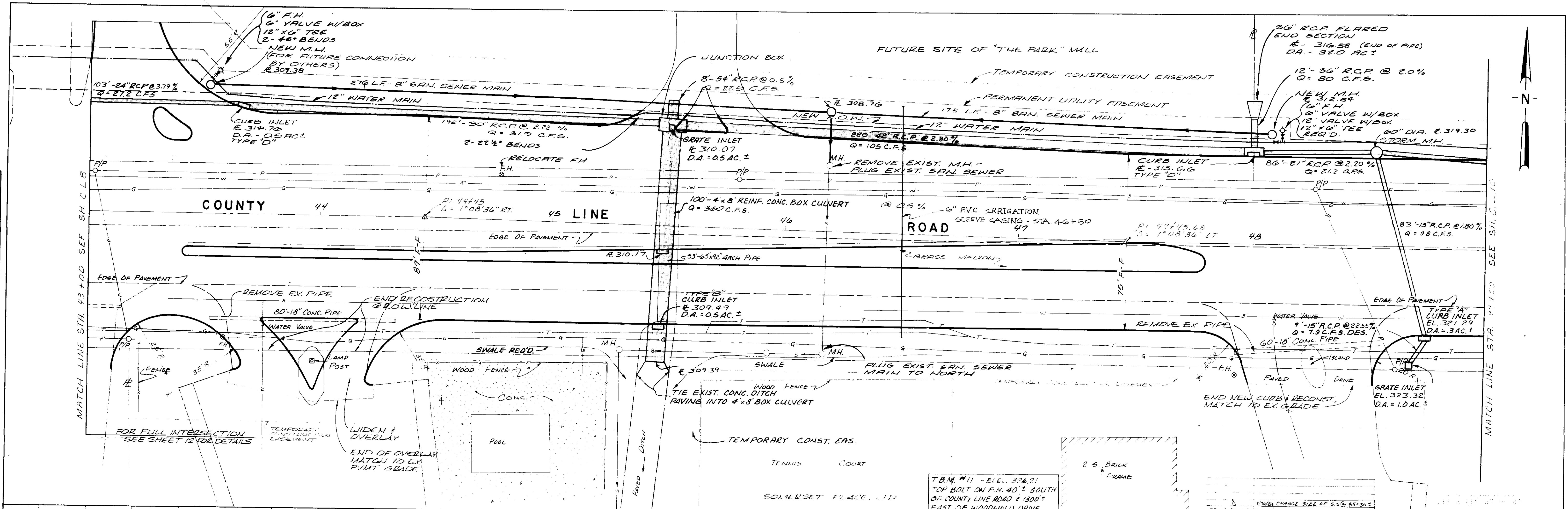
HIGHWAY FEDERAL AID SHEET
PLATE 1-SINGLE PLAN AND PROFILE-FULL DOT
PRINTED IN U.S.A.

JOE A. WAGGONER
Civil Engineer - Branch - Jackson, Miss.

SHEET NO.
CL E O 34

DATE	
BY	
APPROVED	
NOTED	
ALIGNED	
CHECKED	
RT OF WAY	
NO.	

DATE	
BY	
APPROVED	
NOTED	
STRUCTURE	
NOTATIONS	
CHG	
NO.	



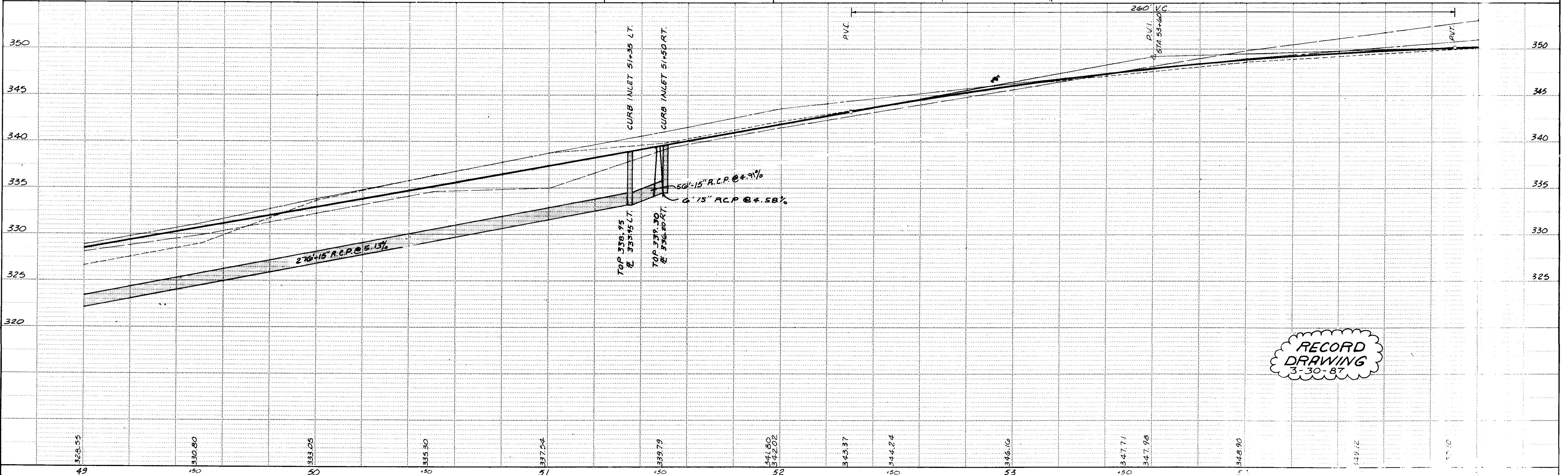
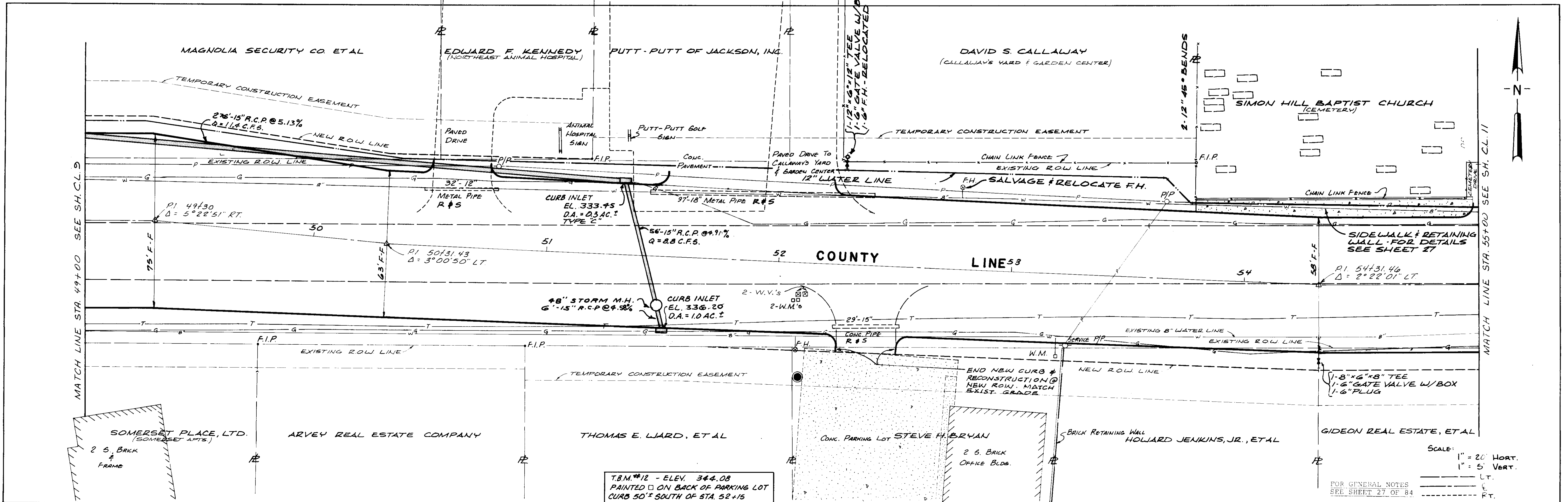
RECORD
DRAWING
3-30-87

PLATE 1-SINGLE PLAN AND PROFILE-FULL DOT

JOE A. WAGGONER
Civil Engineer - Brunswick, NJ

DATE	
BY	
SURVEYED	
PLOTTED	
CHECKED	
RT OF WAY CHECKED	
NOTE BOOK NO.	
PLAN	

DATE	
BY	
SURVEYED	
PLOTTED	
CHECKED	
RT OF WAY CHECKED	
NOTE BOOK NO.	
PROFILE	



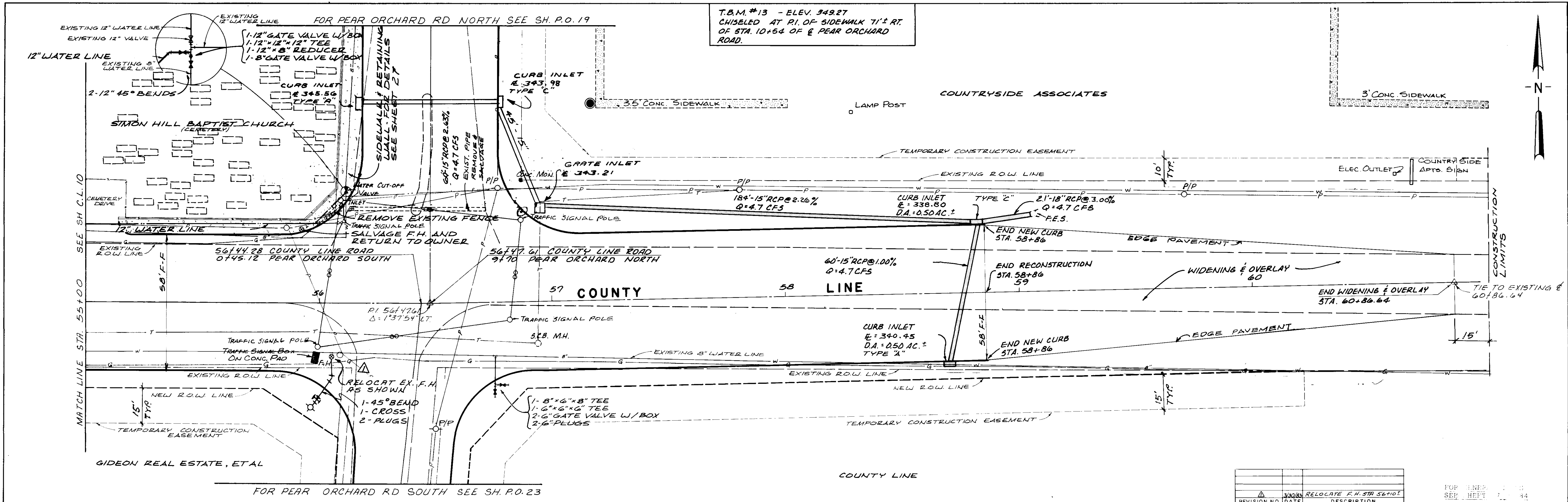
T.B.M. #12 - ELEV. 344.08
 PAINTED ON BACK OF PARKING LOT
 CURB 50' SOUTH OF STA. 52+15

SCALE:
 1" = 20' HORT.
 1" = 5' VERT.
 FOR GENERAL NOTES
 SEE SHEET 27 OF 84

**RECORD
 DRAWING**
 3-30-87

DATE	
BY	
SURVEYED	
PLOTTED	
CHECKED	
RT OF WAY CHECKED	
NOTE BOOK NO.	
NO.	

DATE	
BY	
SURVEYED	
PLOTTED	
CHECKED	
B. M. NOTED	
STRUCTURE NOTATION(S)	
NOTE BOOK NO.	
NO.	



REVISION NO.	300	RELOCATE F.H. STA 56+101
DATE		
DESCRIPTION		

SCALE 1" = 20' HORIZ.
1" = 4' VERT.

