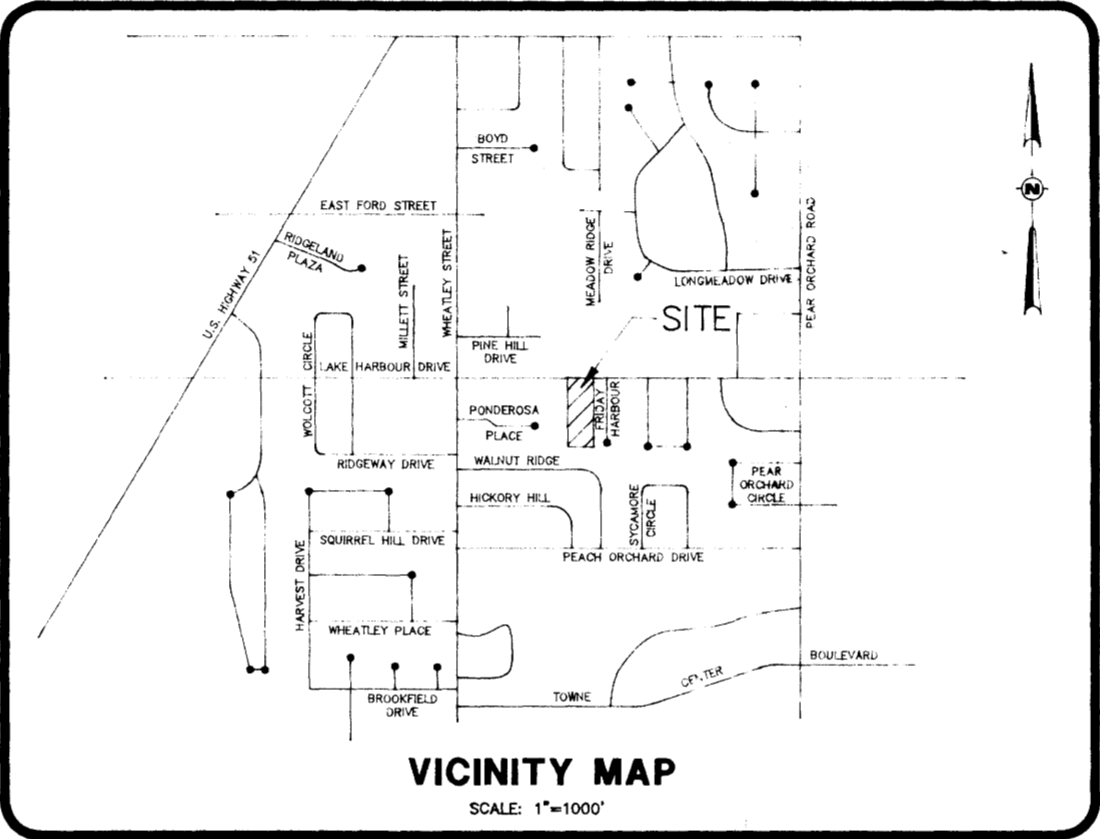


CONSTRUCTION PLANS

FOR

CRESTON COURT



DRAWING INDEX

- 1 - COVER SHEET
- 2 - GEOMETRIC LAYOUT
- 3 - DRAINAGE AND GRADING LAYOUT
- 4 - SEWER AND WATER LAYOUT
- 5 - PLAN AND PROFILE - STREET IMPROVEMENTS
- 6 - PLAN AND PROFILE - SITE STORM DRAINAGE IMPROVEMENTS
- 7 - PLAN AND PROFILE - OFFSITE STORM DRAINAGE IMPROVEMENTS
- 8 - STANDARD SANITARY SEWER DETAILS
- 9 - STANDARD STORM SEWER AND STREET DETAILS
- 10 - STANDARD WATER DETAILS

NOT "As Built"

PWP-00337

DRAWING NO.

H D LANG AND ASSOCIATES, INC.

POST OFFICE BOX 18085

JACKSON, MISSISSIPPI 39236

601-362-4866

CLIENT

SOUTH MADISON COUNTY DEVELOPMENT CO., INC.

LOCATION

**SITUATED IN THE NORTH 1/2 OF SECTION 6
TOWNSHIP 7 NORTH - RANGE 2 EAST
MADISON COUNTY, MISSISSIPPI**

DATE

REVISION

BY

DRAWN BY: P.H.W.

DATE: 7-21-94

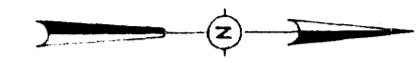
SCALE:

BOOK: PAGE:

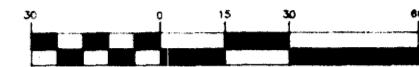
PROJECT NO.: 94-134

SHEET

1

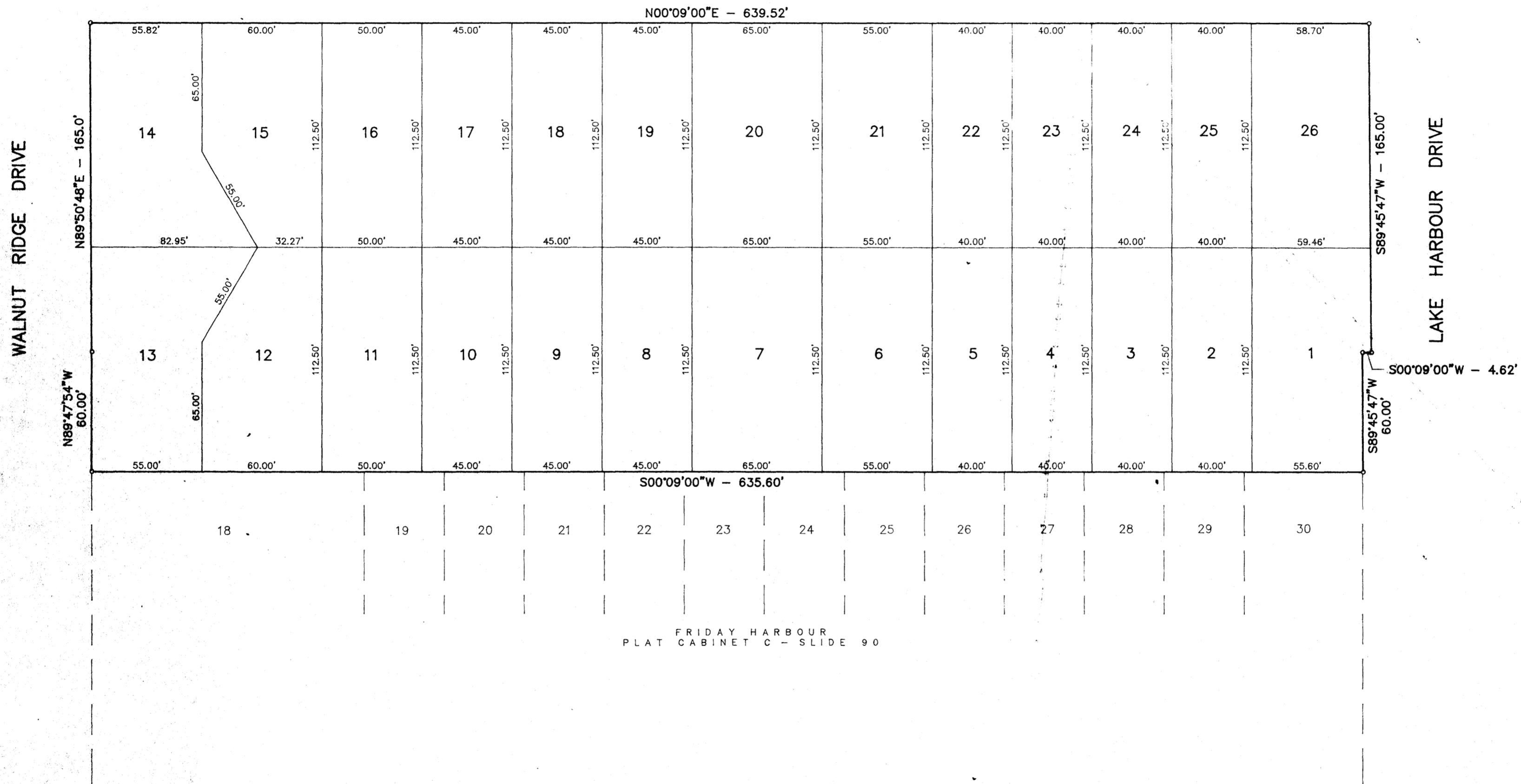


GRAPHIC SCALE



(IN FEET)
1 inch = 30 ft.

TBM ELEV. 360.09
TOP ARROW ON FIRE HYDRANT AT NORTH SIDE OF LAKE HARBOUR DRIVE



DRAWING INC.

H D LANG AND ASSOCIATES, INC.
POST OFFICE BOX 16085 JACKSON, MISSISSIPPI 39236

PROJECT: CRESTON COURT

DESCRIPTION: GEOMETRIC LAYOUT

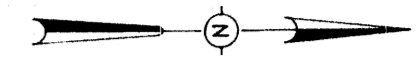
DATE	REVISION	BY

DRAWN BY: P.H.W.
DATE: 7-21-94
SCALE: 1"=30'
BOOK: PAGE:
PROJECT NO.: 94-134

SHEET 2

UNDEVELOPED

EXIST. SAN. M.H.
TOP=353.05
INV.=354.58



GRAPHIC SCALE

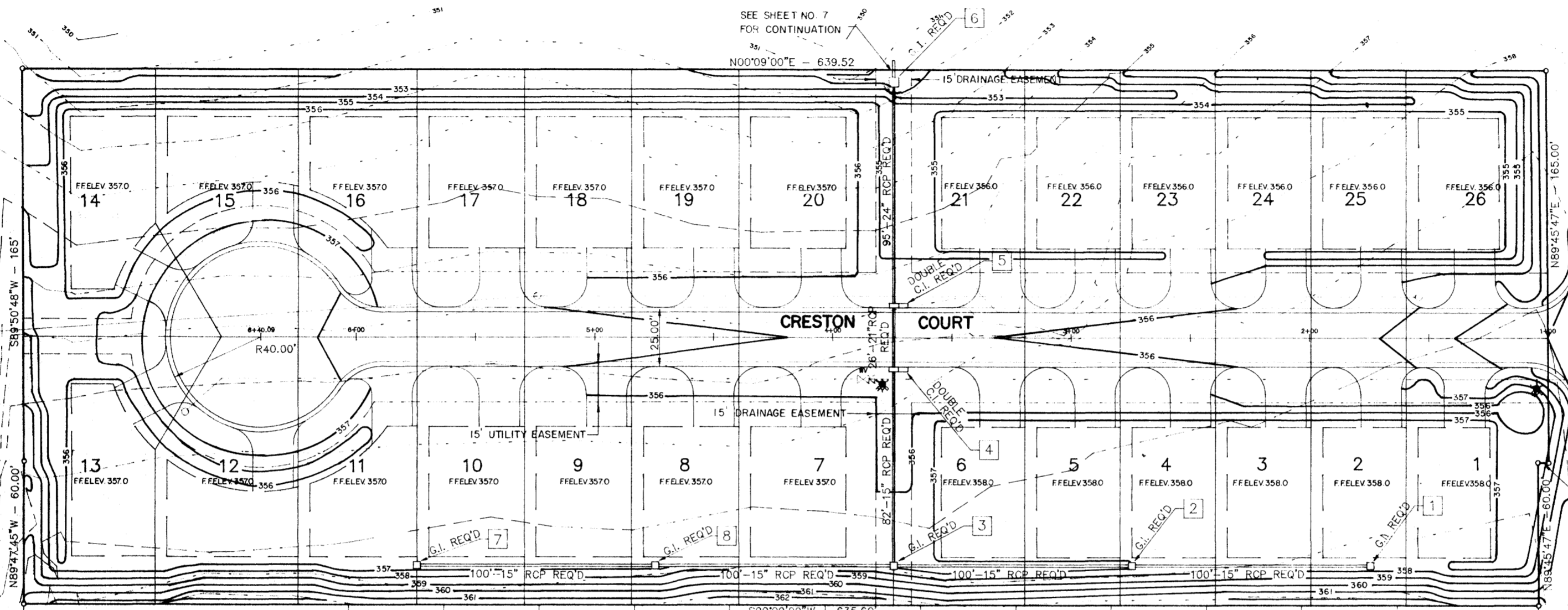


(IN FEET)
1 inch = 30 ft.

TBM
ELEV. 360.09
TOP ARROW ON FIRE HYDRANT AT NORTH SIDE OF LAKE HARBOUR DRIVE

WALNUT RIDGE DRIVE

LAKE HARBOUR DRIVE



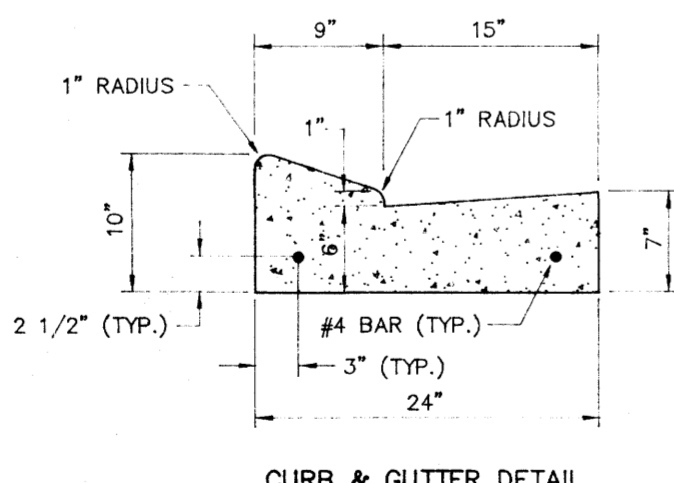
EXIST. SAN. M.H.
TOP=355.98
INV.=335.43

18 19 20 21 22 23 24 25 26 27 28 29 30

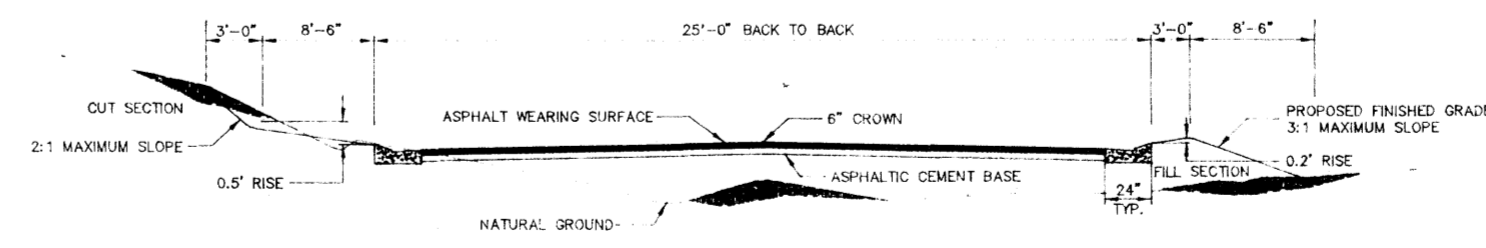
FRIDAY HARBOUR
PLAT CABINET C - SLIDE 90

STORM STRUCTURE SCHEDULE

From	To	Drainage Area/AC	Q CPS/Req.	Size/Length	Slope %	Q CPS/Design	Top Elev.	Inv. Elev.
1	G.I. 2	0.2	0.90	15"/100'	0.25	3.24	357.50	353.75
2	G.I. 3	0.4	1.80	15"/100'	0.25	3.24	357.50	353.50
3	G.I. 4	1.0	4.50	15"/82'	0.425	4.51	356.25	353.25
4	C.I. 5	1.8	8.10	21"/26'	0.30	8.65	355.78	352.90-352.40
5	C.I. 6	2.6	11.70	24"/95'	4.21	46.37	355.78	352.32-352.00
6	G.I. 1	0.2	0.90	15"/100'	0.25	3.24	351.00	348.00-345.60
7	G.I. 8	0.2	0.90	15"/100'	0.25	3.24	356.50	353.75
8	G.I. 3	0.4	1.80	15"/100'	0.25	3.24	356.25	353.50



- NOTES:
- 1/2" EXPANSION JOINT REQUIRED AT 30' INTERVALS, WITH (2) 3/4" DOWEL BARS, 15" LONG REQUIRED AT ALL EXPANSION JOINTS. THEY SHALL BE HELD IN PLACE BY APPROVED CHAIRS OR SUPPORTS, AND 1/2" EXPANSION MATERIALS.
 - 1/4" CONTRACTION JOINT REQUIRED AT 10' INTERVALS.
 - ALL CURB & GUTTER AND DRIVEWAYS TO BE CONSTRUCTED OF 1:2:4 MIX CONCRETE.



TYPICAL STREET SECTION
ALTERNATE NO. 1: 1 1/2" WEARING SURFACE WITH 5" ASPHALTIC CEMENT BASE
ALTERNATE NO. 2: 1 1/2" WEARING SURFACE WITH 4" ASPHALTIC CEMENT BASE & 6" SOIL TREATMENT (LIME)

DRAWING NO.

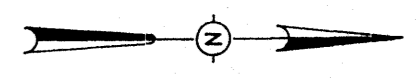
H D LANG AND ASSOCIATES, INC.
POST OFFICE BOX 16085 JACKSON, MISSISSIPPI 39236
601-362-4886

PROJECT
CRESTON COURT

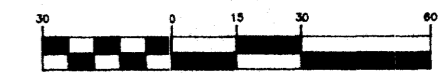
DESCRIPTION
DRAINAGE AND GRADING LAYOUT

DATE REVISION BY
DRAWN BY: P.H.W.
DATE: 7-21-94
SCALE: 1"=30'
BOOK: PAGE:
PROJECT NO.: 94-134

SHEET
3



GRAPHIC SCALE



(IN FEET)
1 Inch = 30 ft.

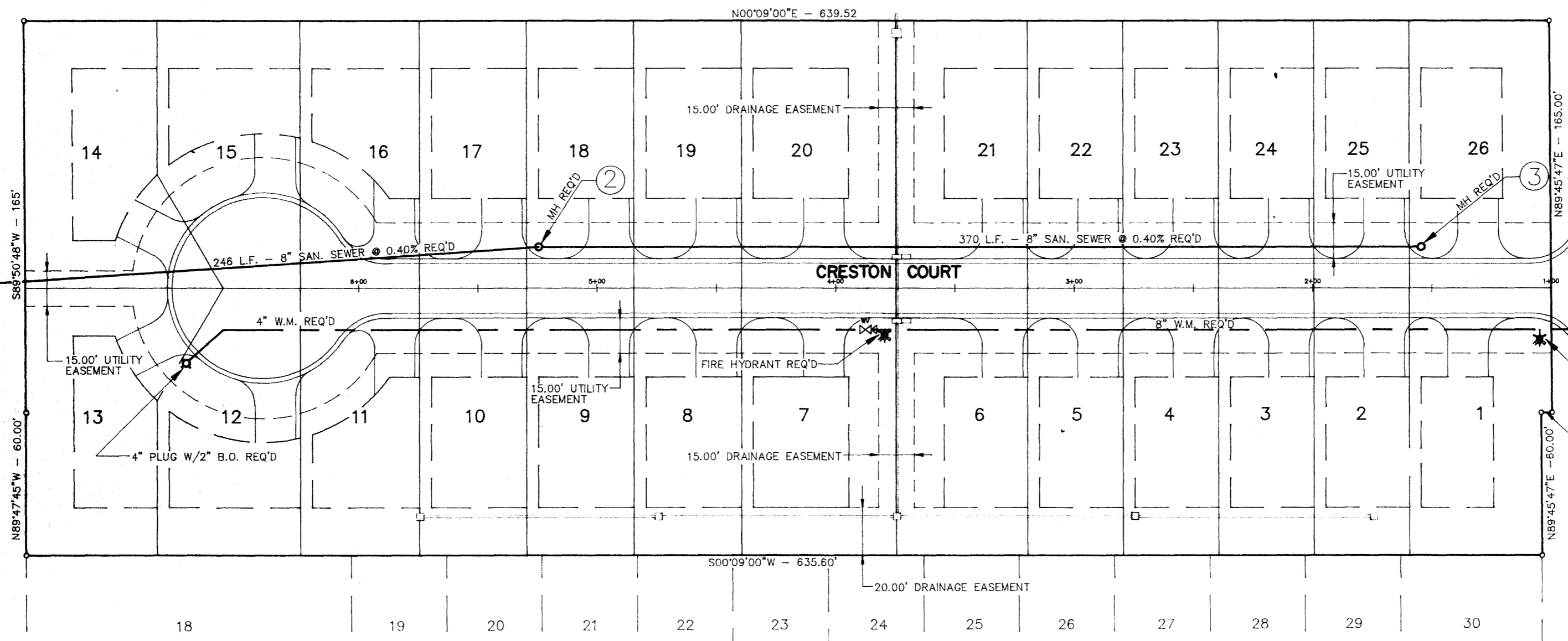
TBM
ELEV. 380.00
TOP ARROW ON FIRE HYDRANT AT NORTH SIDE OF LAKE HARBOUR DRIVE

UNDEVELOPED

EXIST. SAN. M.H.
TOP=353.05
INV.=354.58

WALNUT RIDGE DRIVE

LAKE HARBOUR DRIVE



EXIST. SAN. M.H.
TOP=355.98
INV.=335.43

CONNECTION TO EXIST.
8\"/>

FIRE HYDRANT REQ'D

S00'09'00\"/>

FRIDAY HARBOUR
PLAT CABINET C - SLIDE 90

DRAWING NO.

H D LANG AND ASSOCIATES, INC.

POST OFFICE BOX 16085

JACKSON, MISSISSIPPI 39236

601-362-4886

PROJECT

CRESTON COURT

DESCRIPTION

SANITARY SEWER AND WATER LAYOUT

DATE

REVISION

BY

DRAWN BY: P.H.W.

DATE: 7-21-94

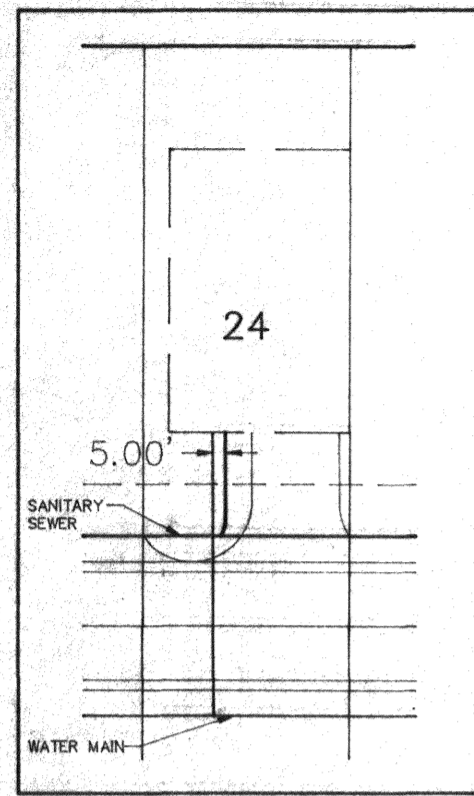
SCALE: 1"=30'

BOOK: PAGE:

PROJECT NO.: 94-134

SHEET

4

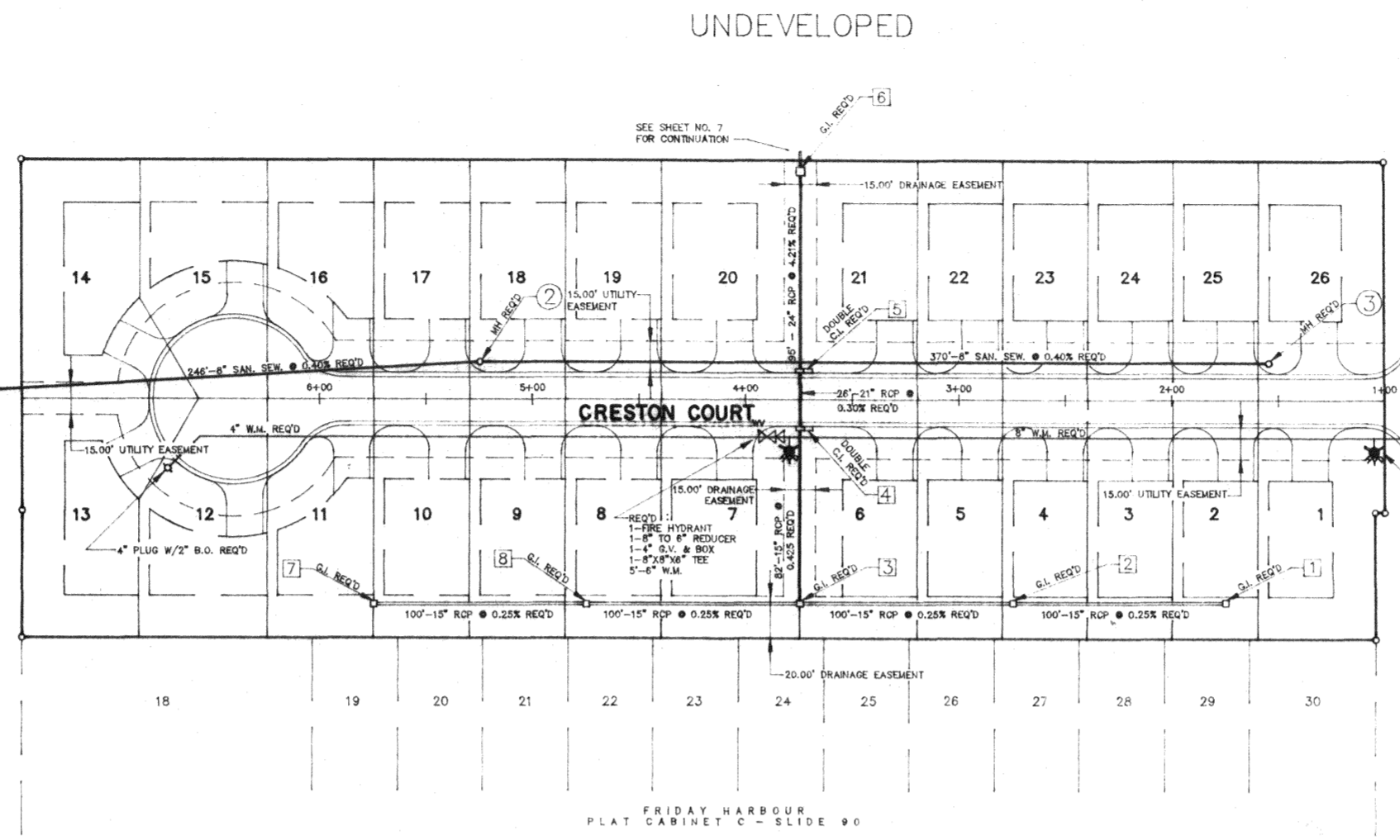


DIST. SAN. M.H.
TOP=353.05
INV.=334.58

WALNUT RIDGE DRIVE

EXIST. SAN. SEWER 0.25%
1 SAN. M.H. REQ'D
DROP STRUCT. REQ'D
TOP=354.00
INV. (PT) =347.77
R=335.15

EXIST. SAN. M.H.
TOP=355.88
INV.=335.43

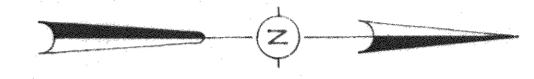


LAKE HARBOUR DRIVE

EXIST. SAN. M.H.
TOP=355.88
INV.=335.43

RECD: 1-FIRE HYDRANT
1-12"x12" Tee
1-6" G.V. & BOX

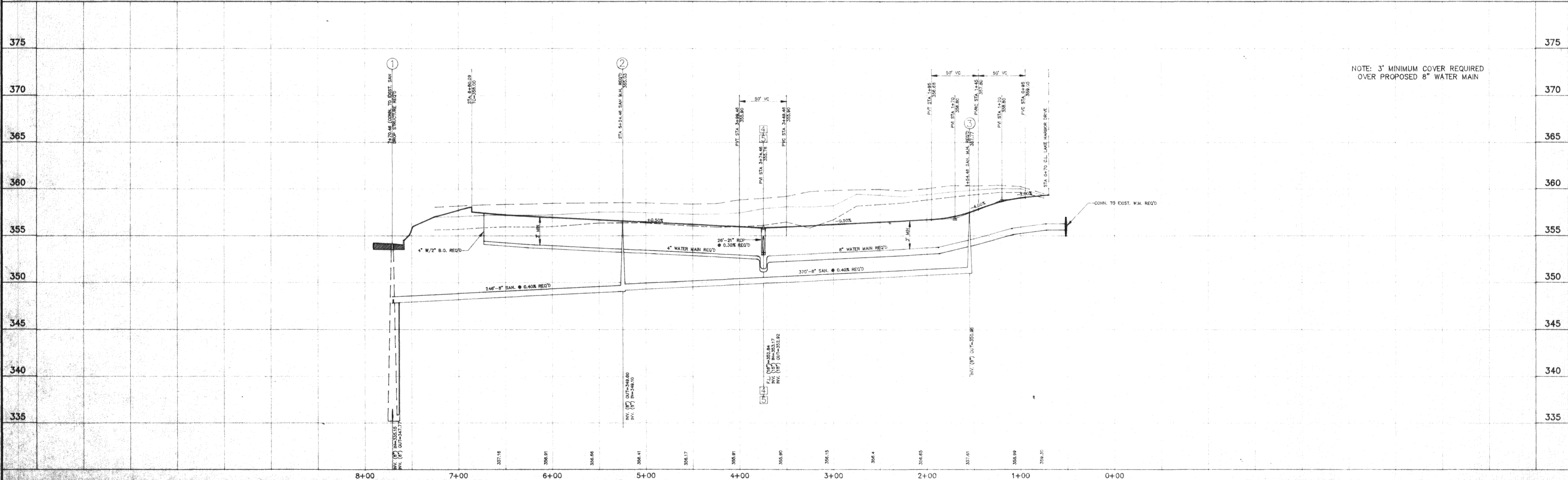
RECD: 1-FIRE HYDRANT
1-6"x6" Tee
5'-6" W.H.



TBM ELEV. 360.09
TOP ARROW ON FIRE HYDRANT AT NORTH SIDE OF LAKE HARBOUR DRIVE

NOTE:
THE CONTRACTOR SHALL PROVIDE A 3/4" WATER SERVICE AND A 6" SANITARY SEWER SERVICE TO EACH LOT AS DIRECTED BY THE ENGINEER. (SEE "TYPICAL SERVICE CONNECTIONS" DETAIL -

EXISTING GROUND - CENTERLINE
EXISTING GROUND - 27.5' LEFT
EXISTING GROUND - 27.5' RIGHT



DRAWING NO.

H D LANG AND ASSOCIATES, INC.
POST OFFICE BOX 16085
JACKSON, MISSISSIPPI 39236
601-362-4886

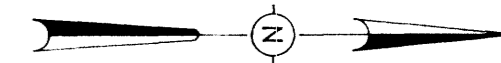
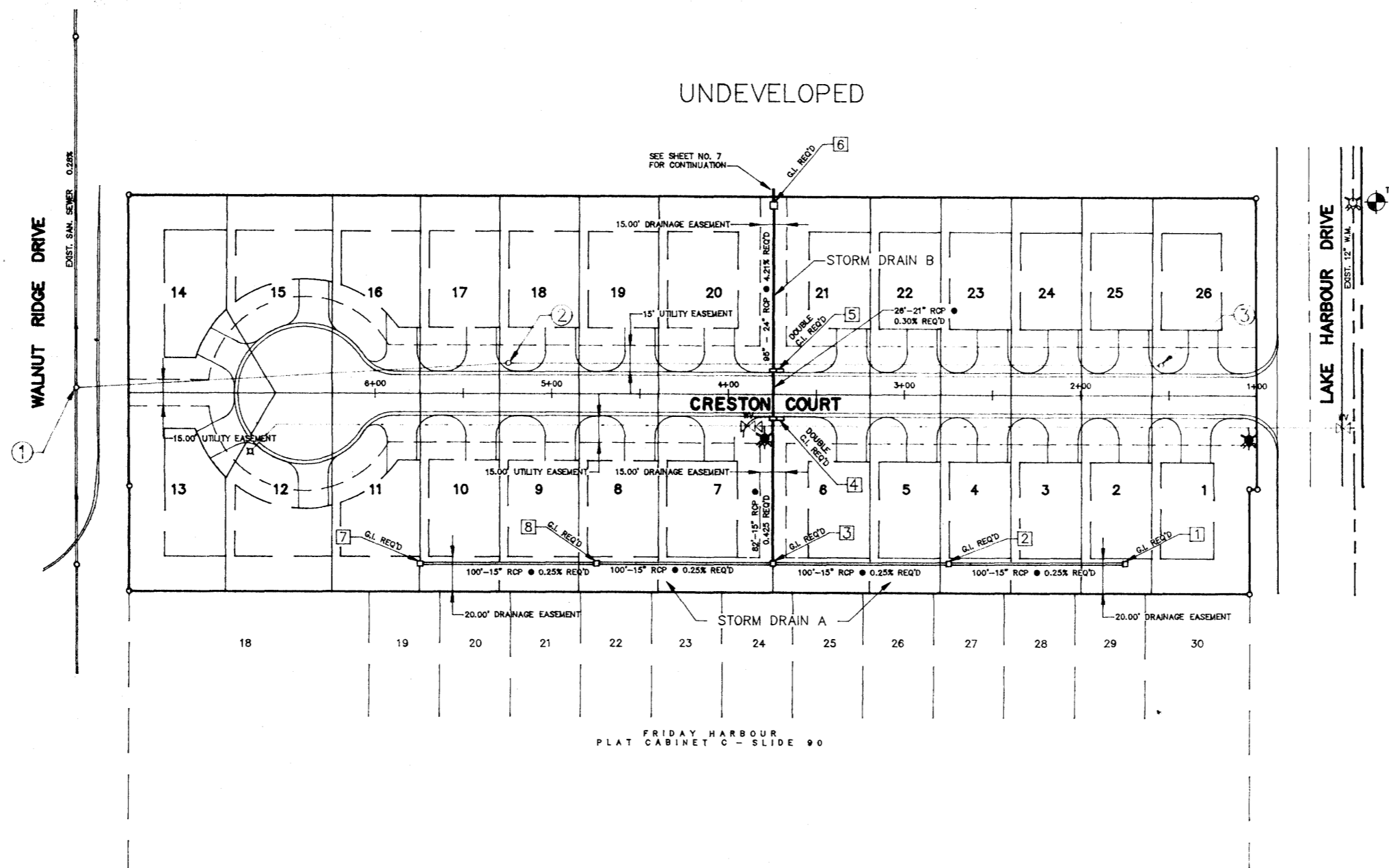
PROJECT: **CRESTON COURT**
DESCRIPTION: **PLAN AND PROFILE - STREET IMPROVEMENTS**

DATE	REVISION	BY

DRAWN BY: P.H.W.
DATE: 7-21-94
HORIZ.: 1"=50' / VERT.: 1"=5'
BOOK: PAGE:
PROJECT NO.: 94-134

SHEET **5**

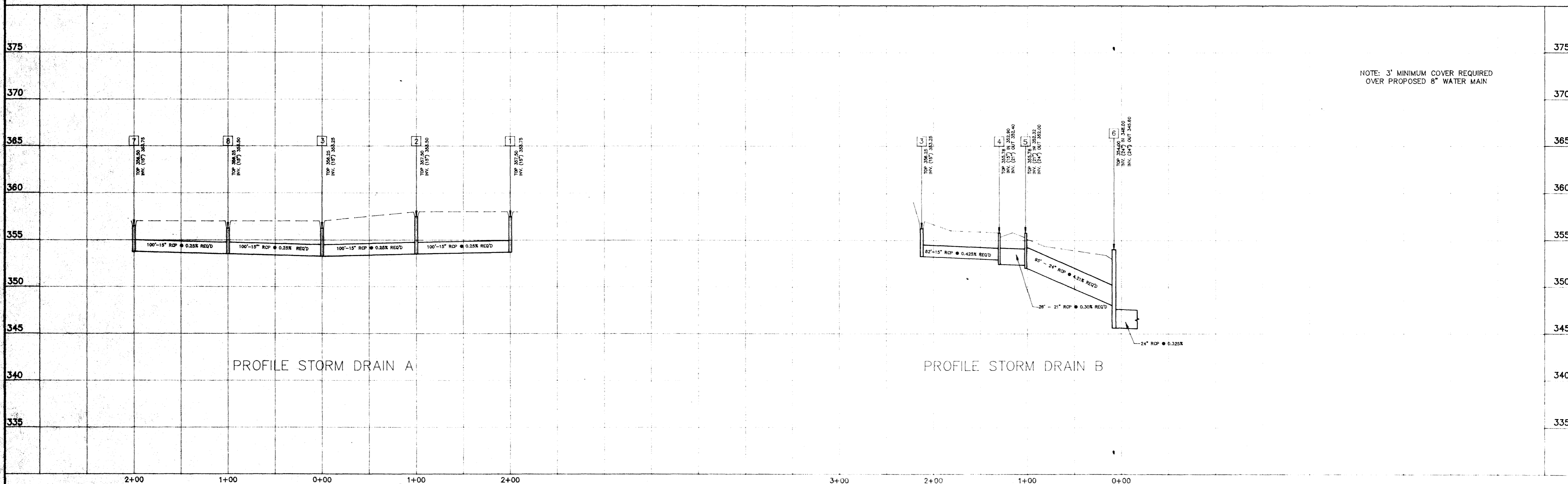
UNDEVELOPED



TBM
ELEV. 360.09
TOP ARROW ON FIRE HYDRANT AT NORTH SIDE OF LAKE HARBOUR DRIVE

NOTE:
THE CONTRACTOR SHALL PROVIDE A 3/4" WATER SERVICE AND A 6" SANITARY SEWER SERVICE TO EACH LOT AS DIRECTED BY THE ENGINEER. (SEE "TYPICAL SERVICE CONNECTIONS" DETAIL -

EXISTING GROUND - CENTERLINE
EXISTING GROUND - 27.5' LEFT
EXISTING GROUND - 27.5' RIGHT



NOTE: 3' MINIMUM COVER REQUIRED OVER PROPOSED 8" WATER MAIN

H D LANG AND ASSOCIATES, INC.
POST OFFICE BOX 16085
JACKSON, MISSISSIPPI 39236

601-362-4886

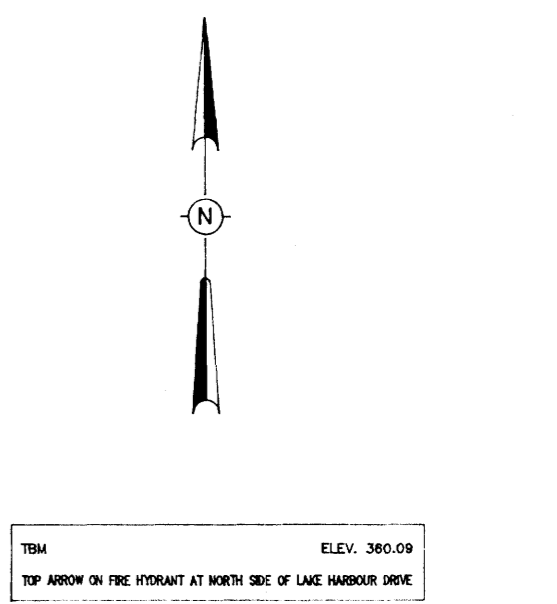
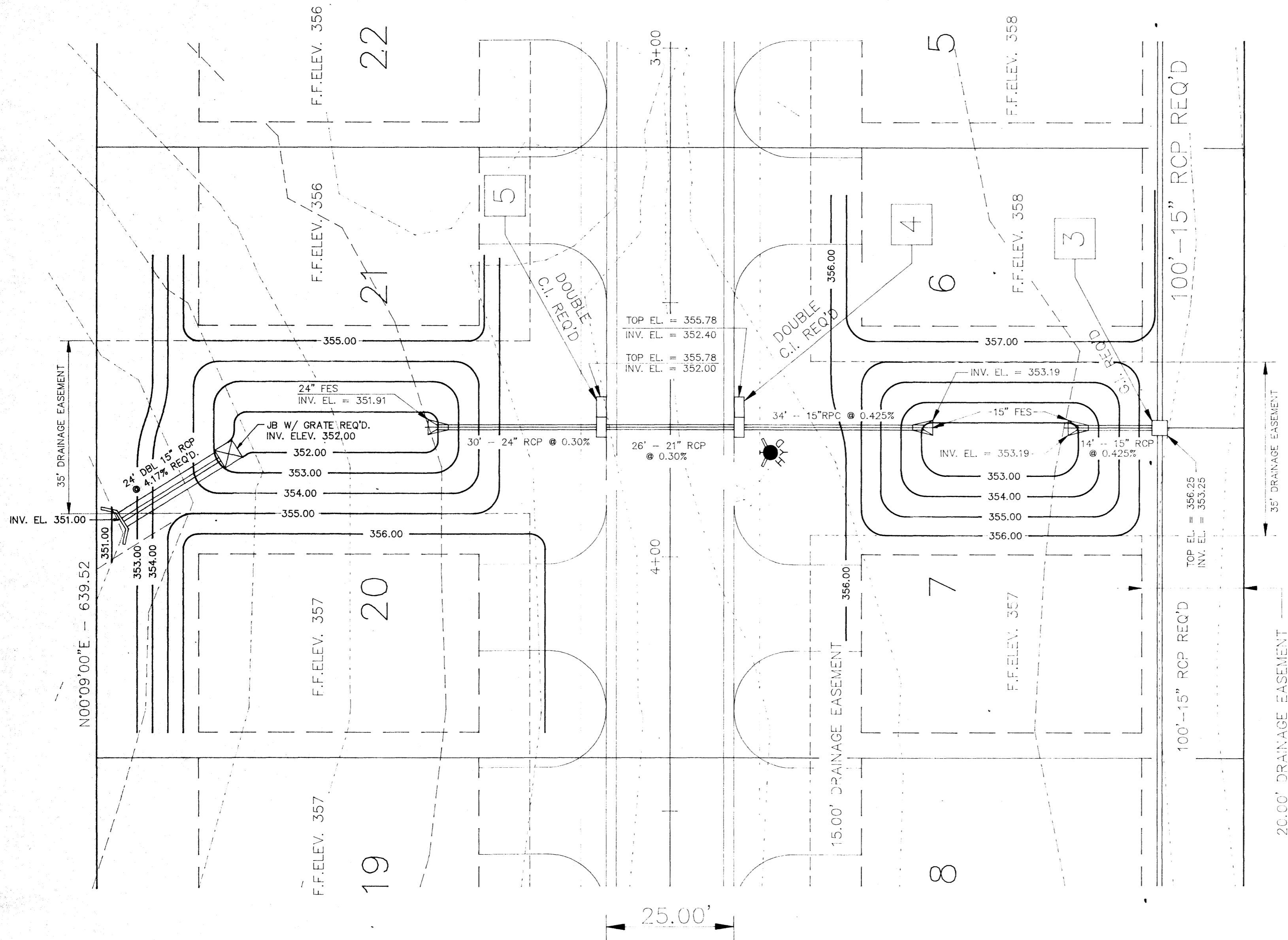
PROJECT
CRESTON COURT

DESCRIPTION
PLAN AND PROFILE - SITE DRAINAGE STORM IMPROVEMENTS

DATE _____ REVISION _____ BY J.S.W. BY P.H.W.
DATE: 7-21-94
HORIZ: 1"=50' / VERT: 1"=5'

SHEET
6

DRAWING NO. 94134MDCD.DWG



CRESTON COURT

H D LANG AND ASSOCIATES, INC.

POST OFFICE BOX 16085

JACKSON, MISSISSIPPI 39236

601-362-4886

PROJECT

CRESTON COURT

DESCRIPTION

DRAINAGE MODIFICATION

DATE

REVISION

BY

DRAWN S.W.

DATE: 18 AUG 1994

SCALE: 1" = 10'

BOOK: PAGE:

PROJECT NO.: 94-134

SHEET

7