

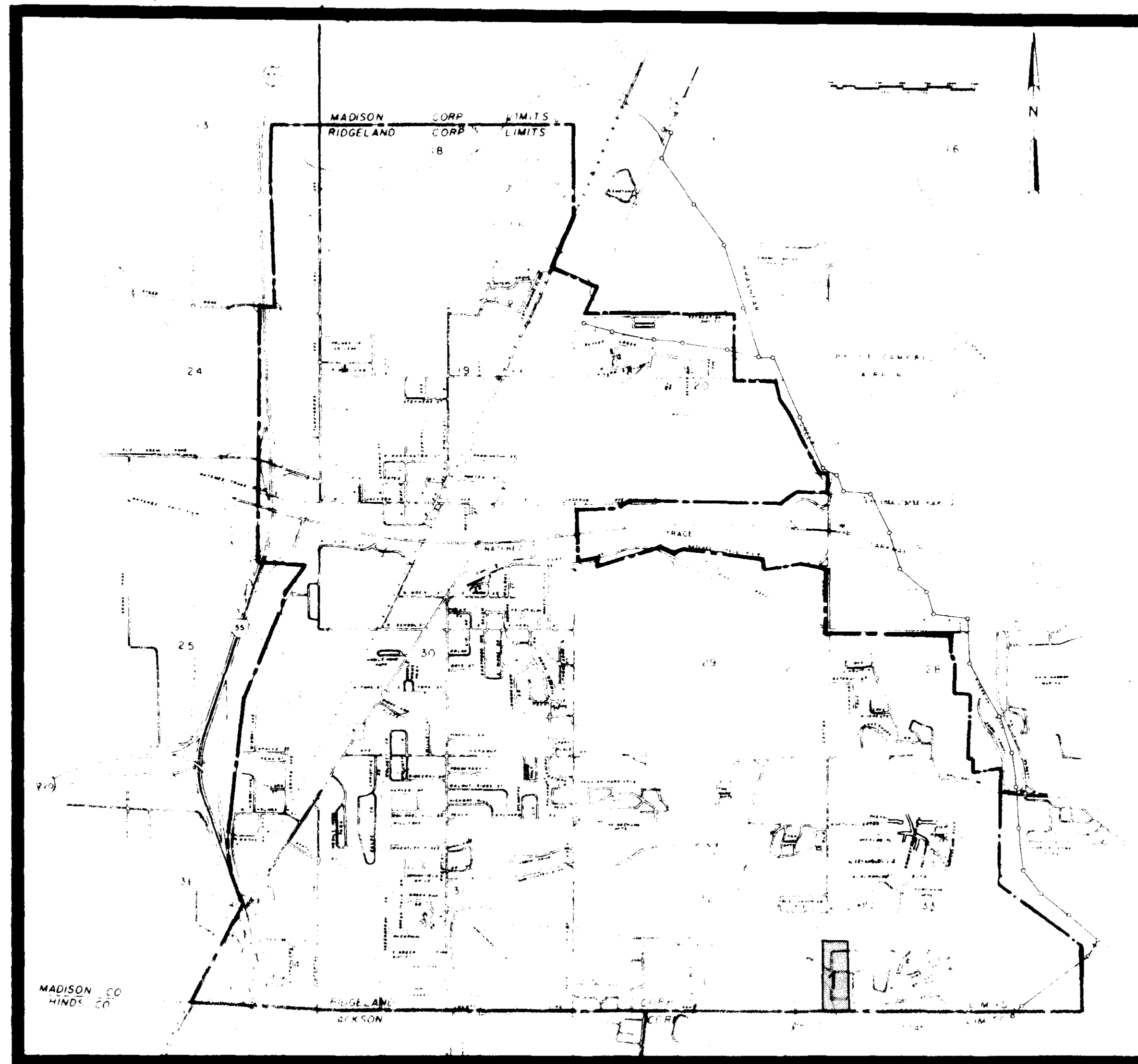
# CITY OF RIDGELAND, MISSISSIPPI

## CULLEY-BRASHEAR REGIONAL INTERCEPTOR SEWER CONNECTIONS

Mayor:  
Hite B. Wolcott

Mayor Pro Tem:  
Hilda Boyd

City Attorney:  
Milton Case



Aldermen:  
Al Bible  
Hilda Boyd  
Harvey Carr, Jr.  
Gene McGee  
Gilbert Sollek

Public Works Director  
Horace M. Ross

### MARCH 1987

Waggoner Engineering Inc.  
Consulting Engineers  
Jackson / Brandon, Ms.

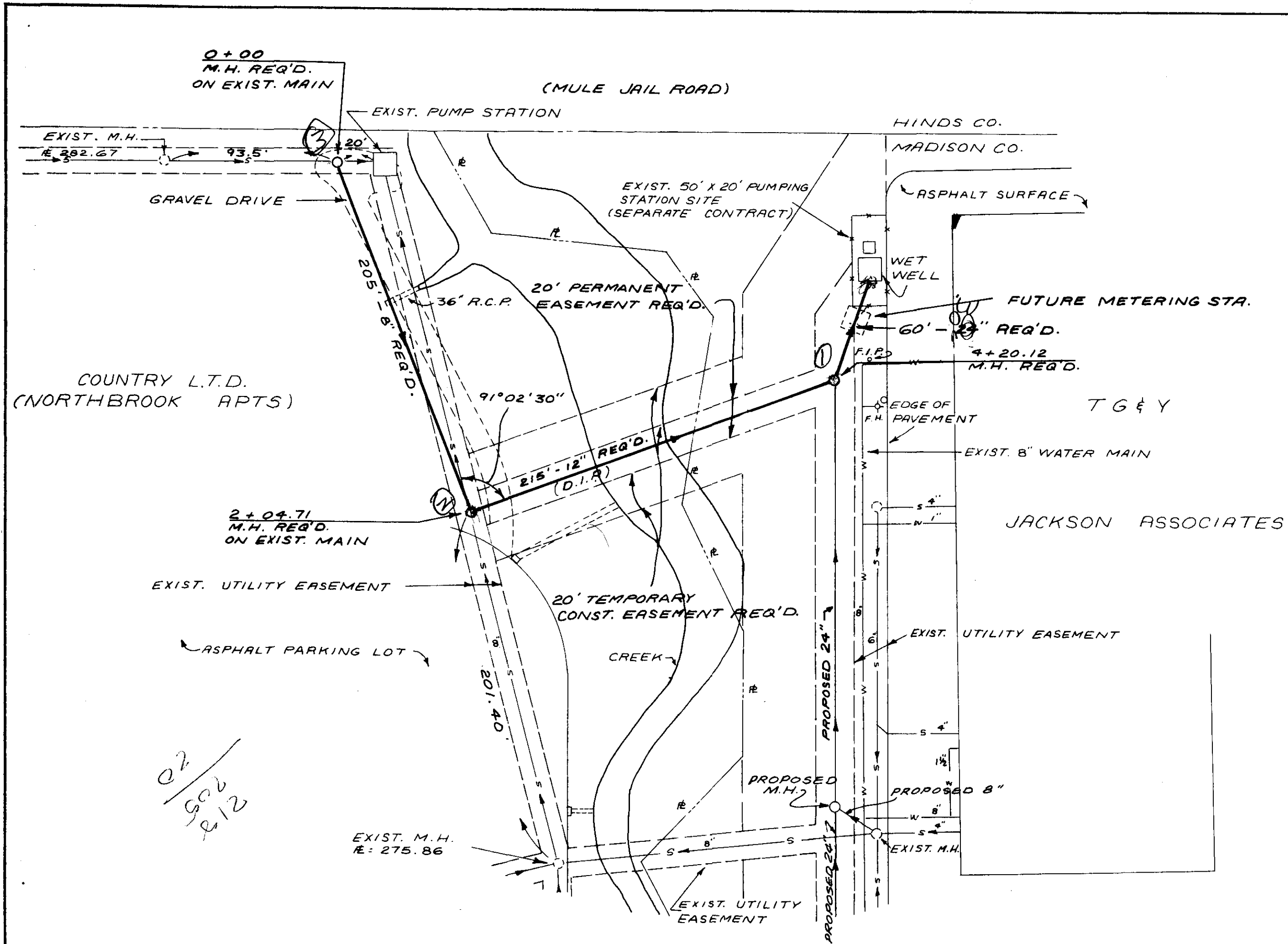
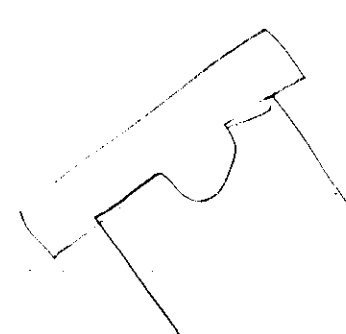
SHEET INDEX:  
SHEET NO. 1 SCHOOL CREEK CONNECTION  
2 STANDARD DETAILS



**PWP-00312**

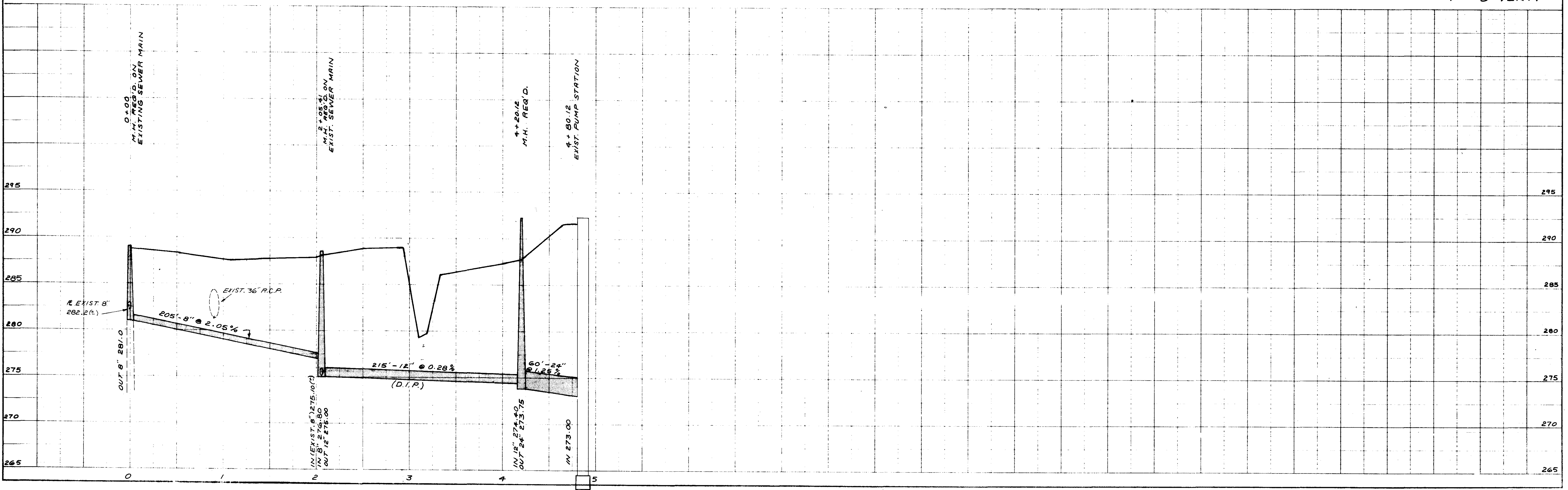
*Mule Tail*

*Mule Tail Sewer*



NOTE: VERIFY DEPTH OF EXISTING SAN. SEWER MAINS BEFORE BEGINNING CONSTRUCTION. STA. 0+00, STA. 2+04.71

SCALE: 1" = 50' HORIZ.  
1" = 5' VERT.



PLAN  
 CHECKED BY: [ ]  
 DATE: [ ]  
 NO. [ ]

PROFILE  
 CHECKED BY: [ ]  
 DATE: [ ]  
 NO. [ ]

