

# CITY OF RIDGELAND, MISSISSIPPI

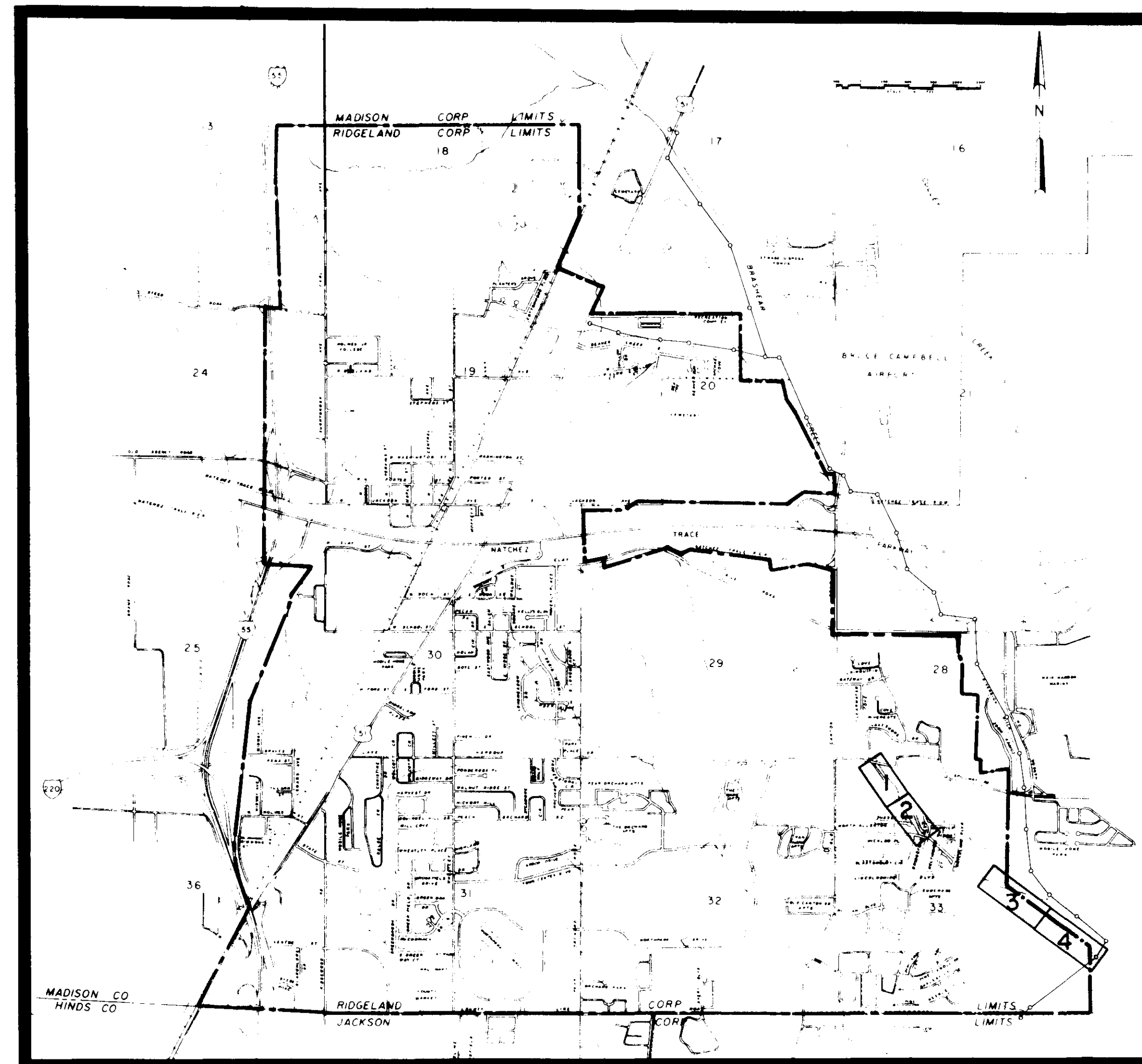
## CULLEY-BRASHEAR REGIONAL INTERCEPTOR

### SEWER CONNECTIONS

Mayor:  
Hite B. Wolcott

Mayor Pro Tem:  
Hilda Boyd

City Attorney:  
Milton Case



Aldermen:  
Al Bible  
Hilda Boyd  
Harvey Carr, Jr.  
Gene McGee  
Gilbert Sollek

Public Works Director  
Horace M. Ross

SHEET INDEX:

SHEET NO. 1 & 2 GATEWAY NORTH CONNECTION  
3 & 4 DIVERSION DITCH CONNECTION  
5 STANDARD DETAILS

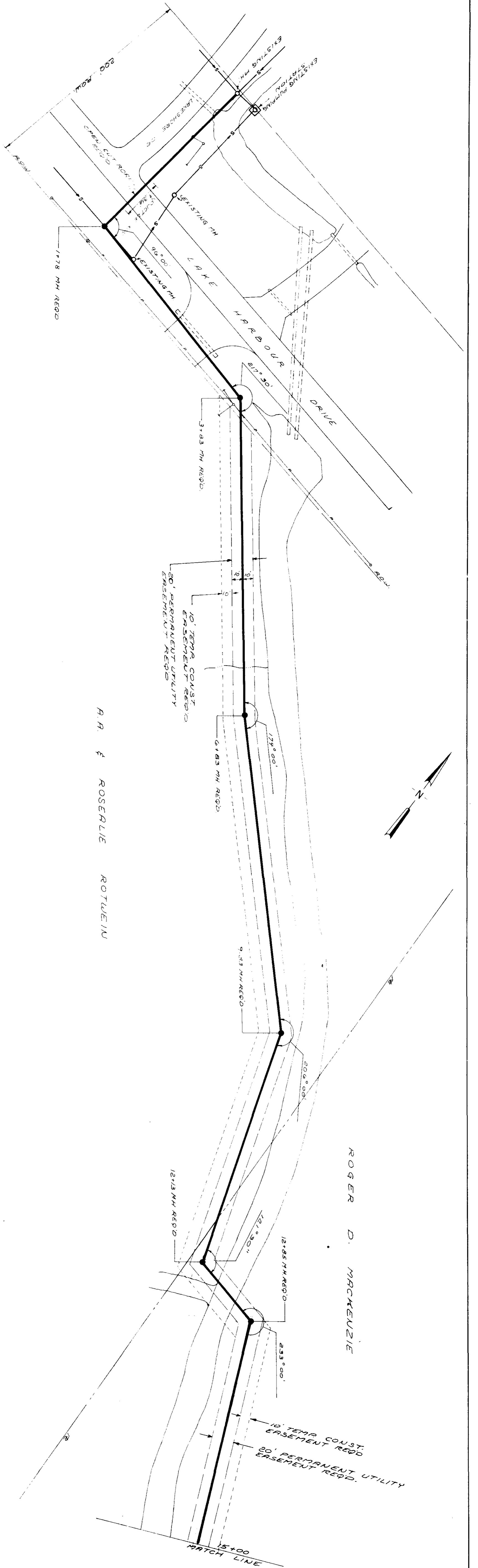
Waggoner Engineering Inc.  
Consulting Engineers  
Jackson / Brandon, Ms.

**PWP-00313**

Tie in: Thompson sta. - Lake shore Lift Sta.

PROFILE		BY	DATE
SURVEYED			
PLOTTED			
GRADES CHECKED			
B. M.'S NOTED			
STRUCTURE NOTATIONS CHECKED			

PLAN		BY	DATE
SURVEYED			
PLOTTED			
ALIGNMENT CHECKED			
RT OF WAY CHECKED			



R. R. & ROSEALIE ROUTE 110

ROGER D. MACKENZIE

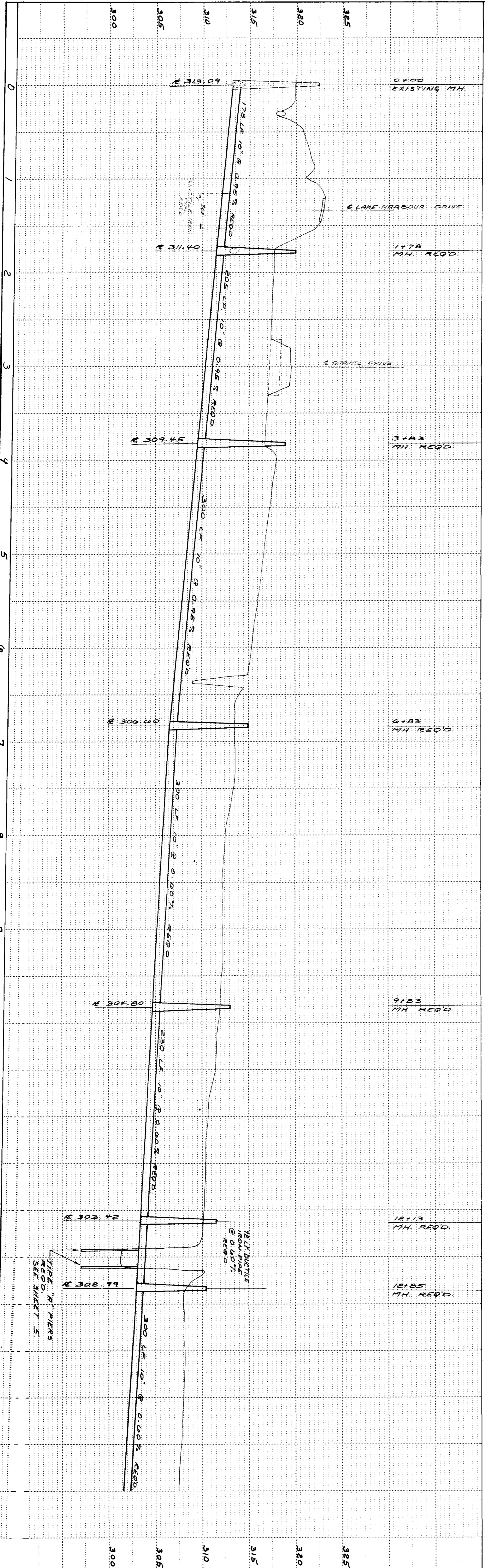
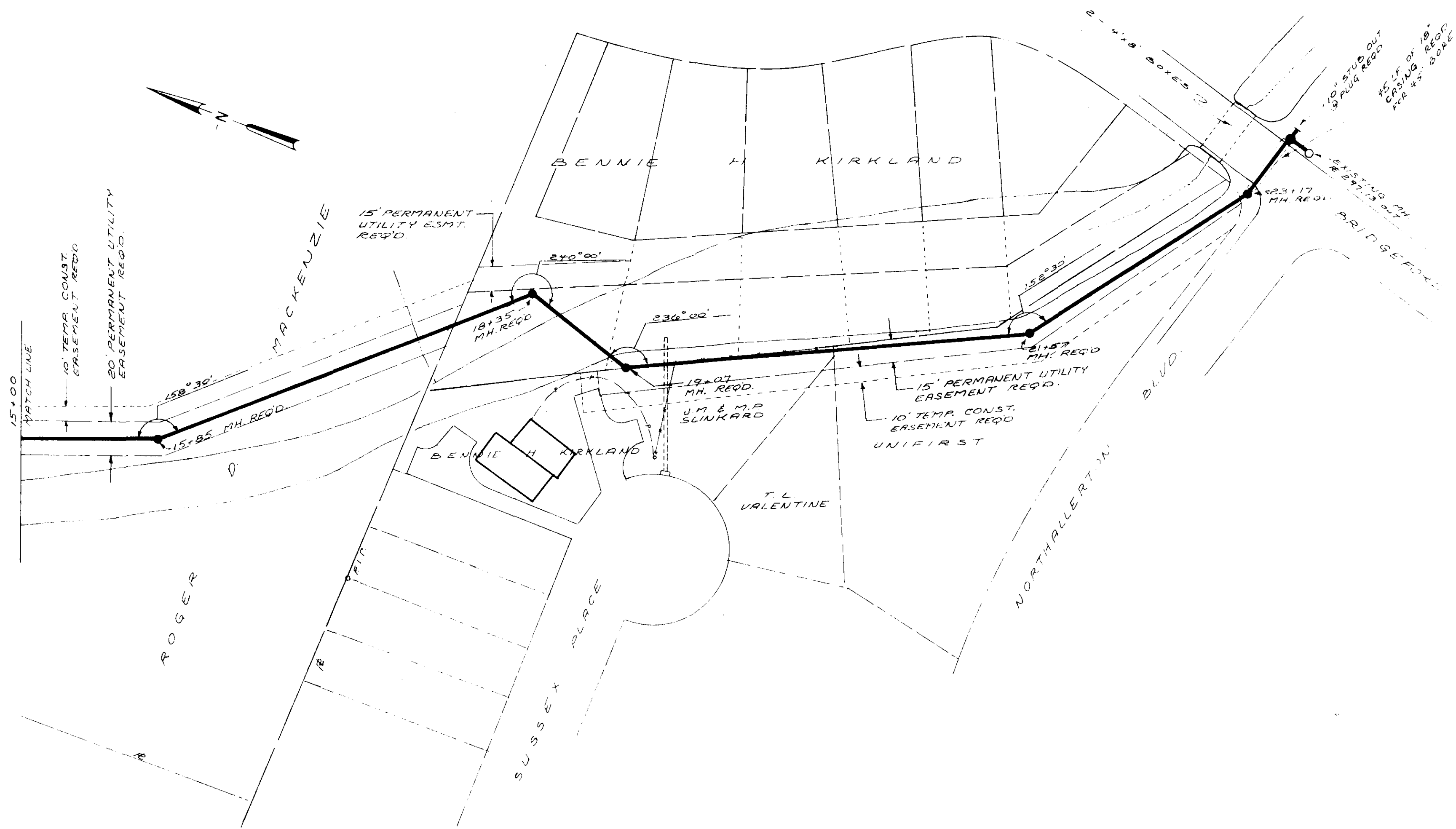
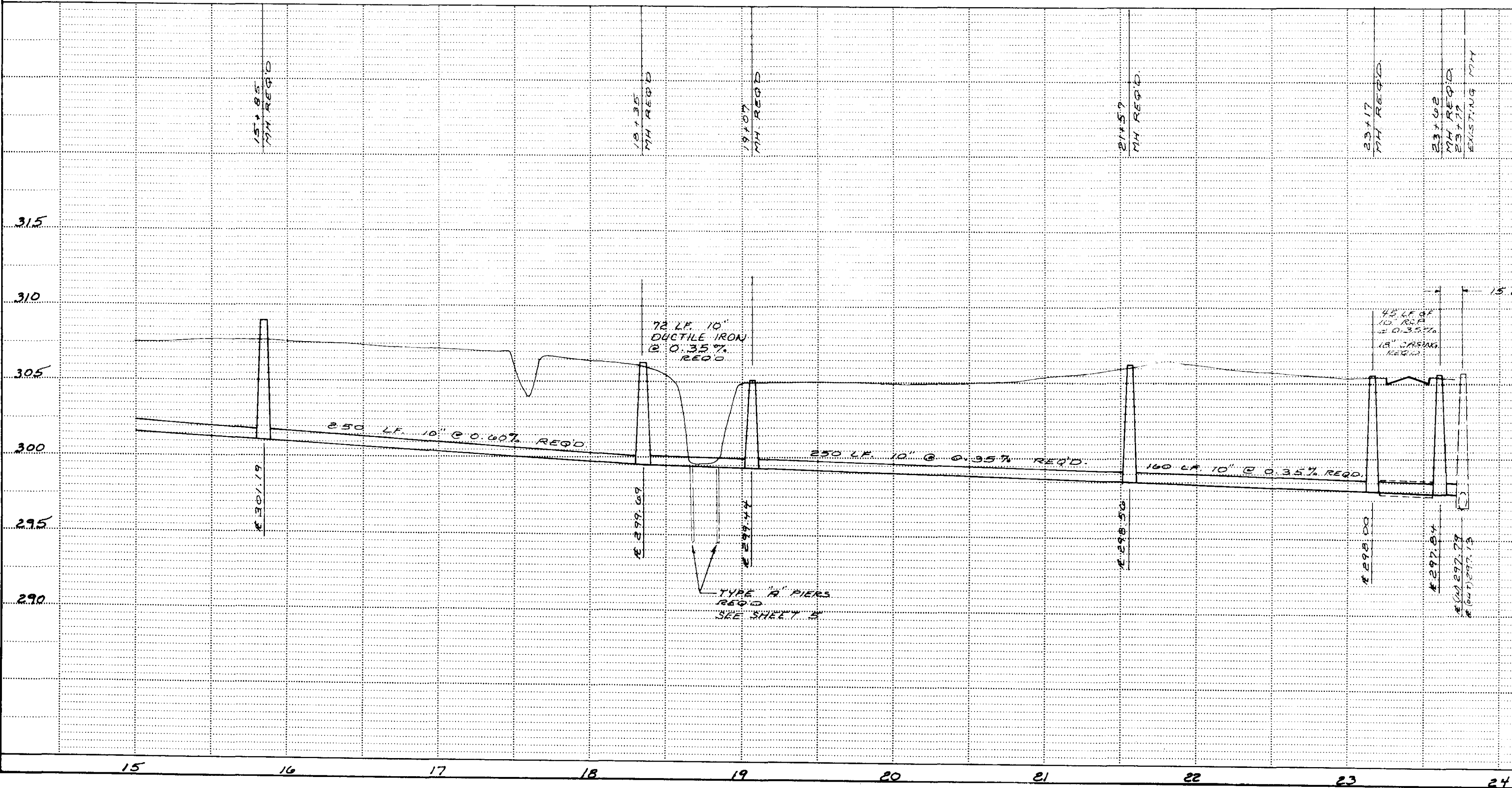


PLATE 1-SINGLE PLAN AND PROFILE FULL DOT

PLAN	SURVEYED	DATE
	PLOTTED	BY
	CHECKED	
	NOTED	
	RT OF WAY CHECKED	
	NO. 1	



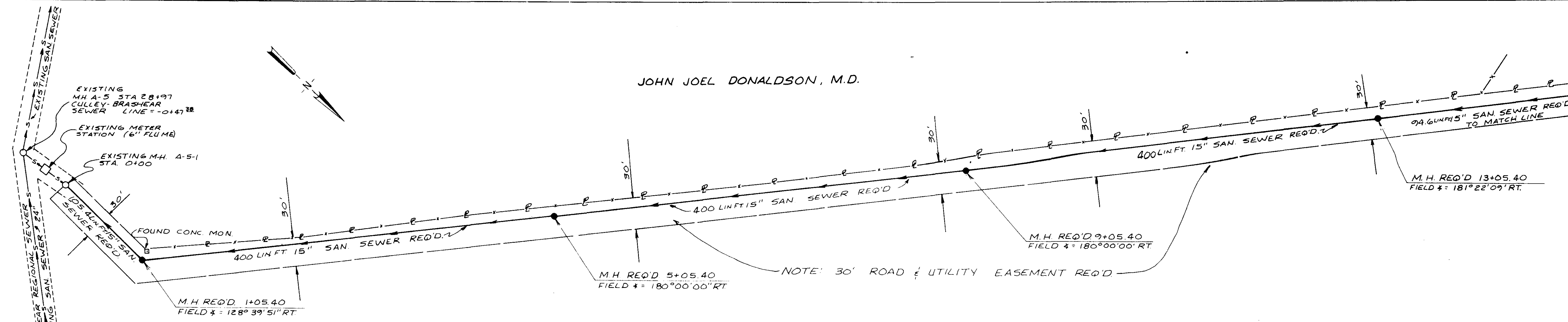
PROFILE	SURVEYED	DATE
	PLOTTED	BY
	CHECKED	
	NOTED	
	STRUCTURE NOTATIONS CHECKED	
	NO. 1	



HIGHWAY FEDERAL AID SHEET  
 PLATE 1-SINGLE PLAN AND PROFILE-FULL DOT  
 TITLEBLOCK  
 PRINTED IN U.S.A.

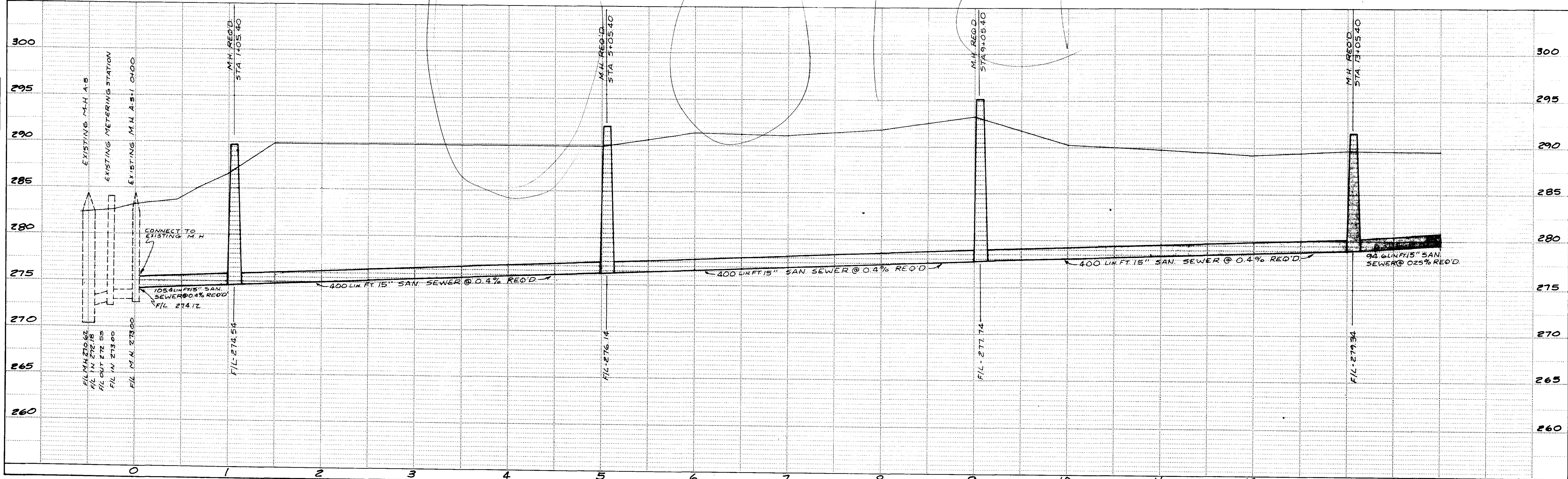
JOHN JOEL DONALDSON, M.D.

MATCH LINE STA 14+00. SEE SHEET NO.



PEARL RIVER VALLEY WATER SUPPLY DISTRICT

SCALE.  
1 INCH = 50 FEET - HOR  
1 INCH = 5 FEET - VERT



HIGHWAY FEDERAL AID SHEET  
PLATE 1-SINGLE PLAN AND PROFILE-FULL DOT  
PRINTED IN U.S.A.

WAGGONER ENGINEERING INC.  
Consulting Engineers - Jackson / Brandon, MS

SHEET NO. 3

PLAN	SURVEYED	DATE
	NOTE BOOK	
	ALIGNMENT CHECKED	
	RT OF WAY CHECKED	
	NO.	

PROFILE	SURVEYED	DATE
	GRADES CHECKED	
	PLOTTED	
	STRUCTURE NOTATIONS CHECKED	
	NO.	

DATE	
BY	
SURVEYED	
PLOTTED	
CHECKED	
RT. OF WAY CHECKED	
NO.	

DATE	
BY	
SURVEYED	
PLOTTED	
CHECKED	
RT. OF WAY CHECKED	
NO.	

MATCH LINE STA. 14+00 SEE SHEET NO.

DENNIS MURPHREE FORD

M.H. REQ'D 17+23.78  
FIELD  $\Delta = 179^{\circ}40'52''$  RT.

NOTE:  
GAS LINE PROPERTY OF MUSTANG  
FUEL CORP, A DIVISION OF MISS.  
FUEL CORP. A 24-HOUR NOTICE  
REQ'D. BEFORE DIGGING. NOTIFY  
J.C. HESTER. PHONE 922-0551

323.78 LIN. FT. 15" SAN SEWER REQ'D

126.0 LIN. FT.  
14" D.I.P. SAN  
SEWER REQ'D

M.H. REQ'D 18+49.78  
FIELD  $\Delta = 180^{\circ}00'00''$  RT.

NOTE:  
30' ROAD & UTILITY  
EASEMENT REQ'D.

265.13 LIN. FT. 15" SAN SEWER REQ'D

M.H. REQ'D 21+14.91  
FIELD  $\Delta = 147^{\circ}50'53''$  RT.

M.H. REQ'D 24+39.51  
FIELD  $\Delta = 204^{\circ}29'42''$

EXISTING 8" FORCE MAIN TO BE  
RELOCATED INTO M.H. AT  
STA 21+15.10

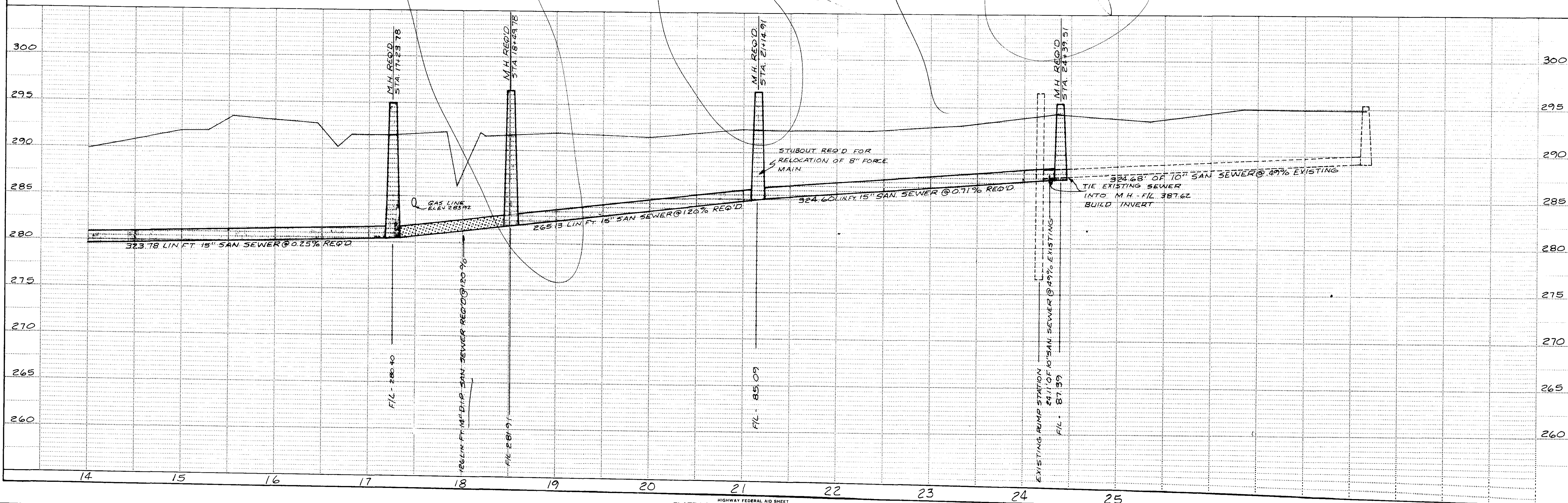
EXISTING WET WELL - IS TO BE LEFT IN  
OPERATION. UNTILL NEW SEWER CON-  
NECTION IS PUT IN OPERATION

EXISTING M.H. 27+63.10

BRUCE G. MARSHALL &  
CHRIS D. MARSHALL

PEARL RIVER VALLEY WATER SUPPLY DISTRICT

SCALE:  
1 INCH = 50 FEET HOR  
1 INCH = 5 FEET VERT



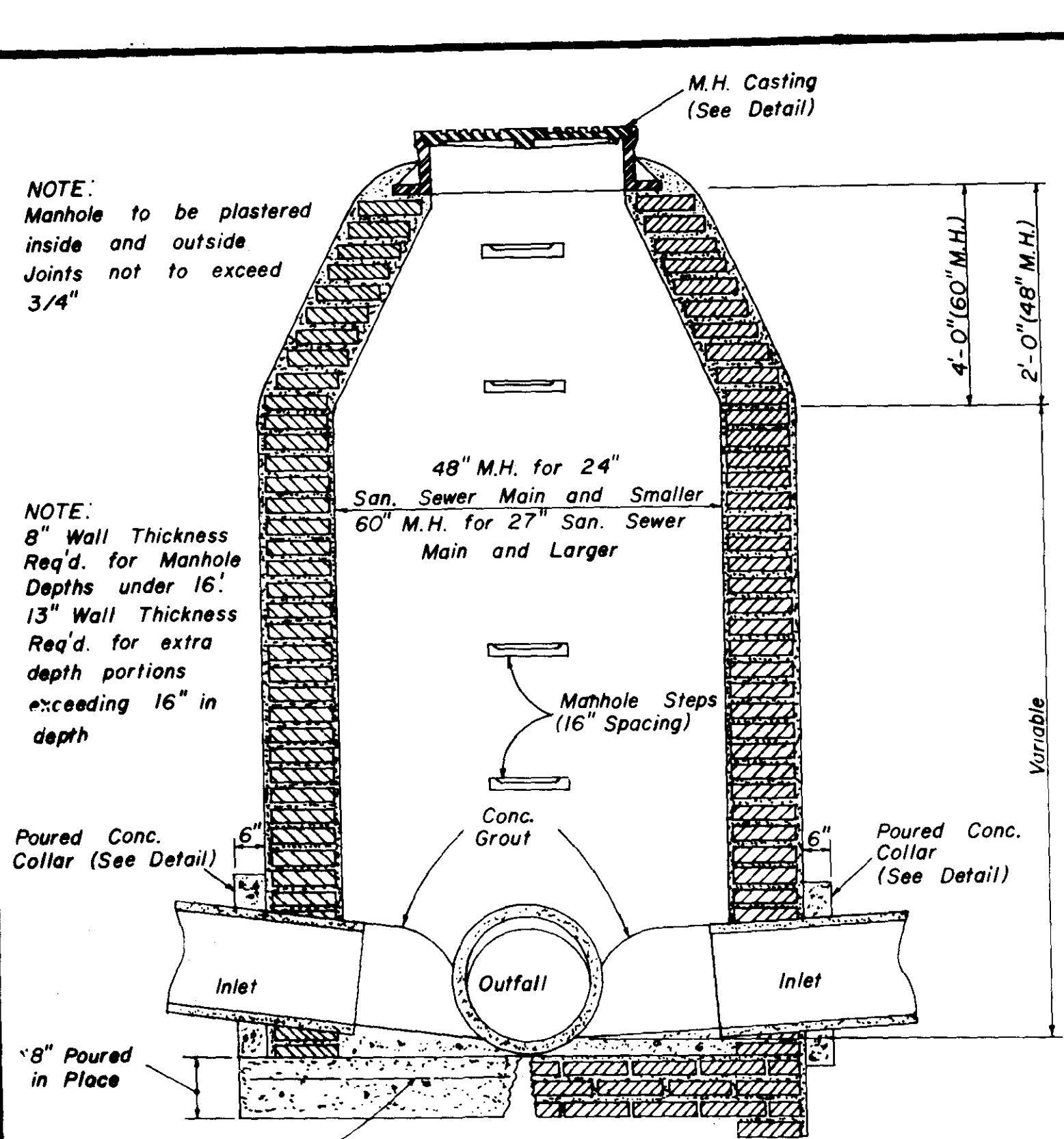
HIGHWAY FEDERAL AID SHEET  
PLATE 1-SINGLE PLAN AND PROFILE-FULL DOT  
TELEPHONE  
PRINTED IN U.S.A.

WAGGONER ENGINEERING INC.  
Consulting Engineers - Jackson / Brandon

SHEET NO. 4

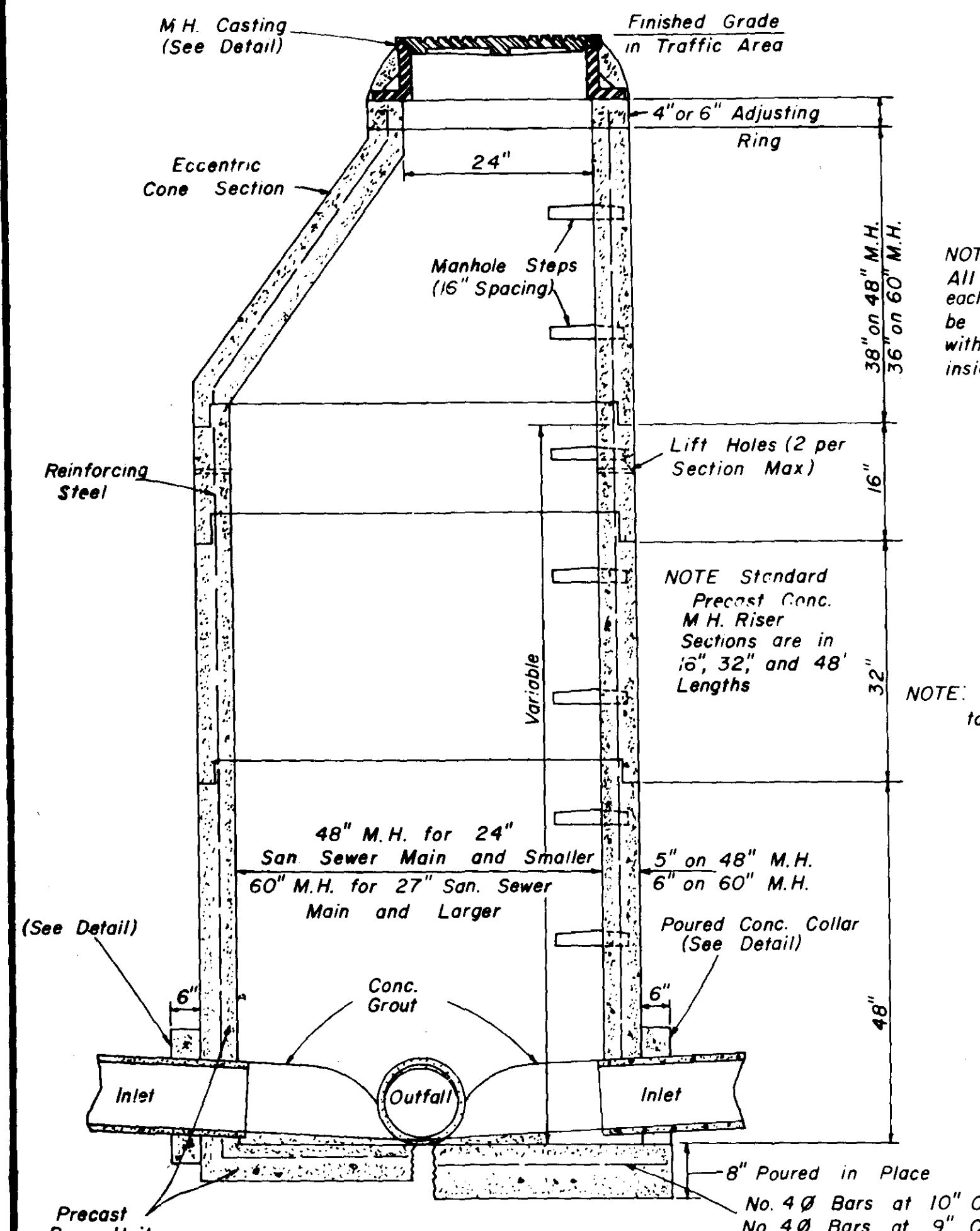
NOTE: Manhole to be plastered inside and outside. Joints not to exceed 3/4"

NOTE: 8" Wall Thickness Req'd. for Manhole Depths under 16'. 13" Wall Thickness Req'd. for extra depth portions exceeding 16" in depth.



No. 4  $\emptyset$  Bars at 10" C.C. on 48" M.H.  
No. 4  $\emptyset$  Bars at 9" C.C. on 60" M.H.

SECTION STANDARD BRICK MANHOLE

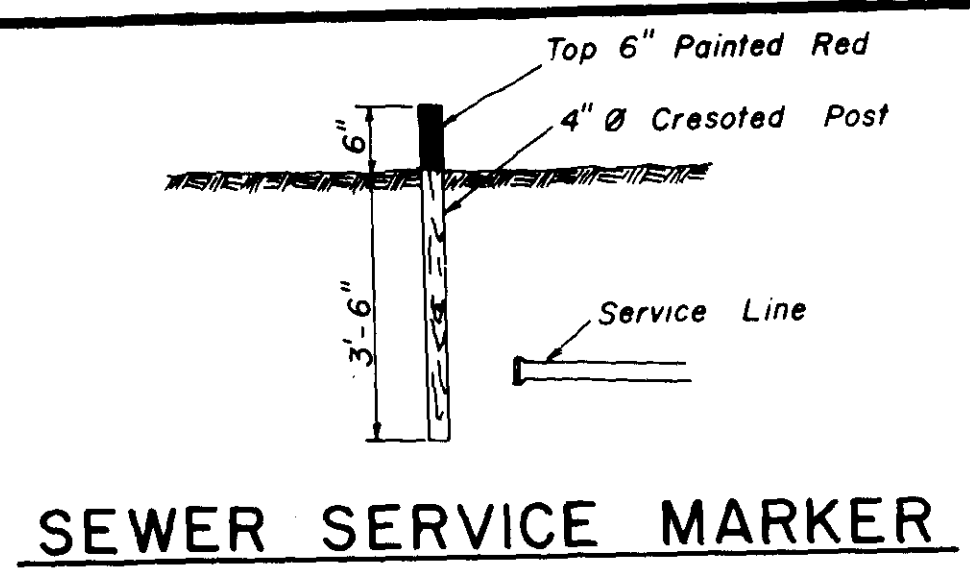


NOTE: Standard Precast Conc. M.H. Riser Sections are in 16", 32" and 48" Lengths.

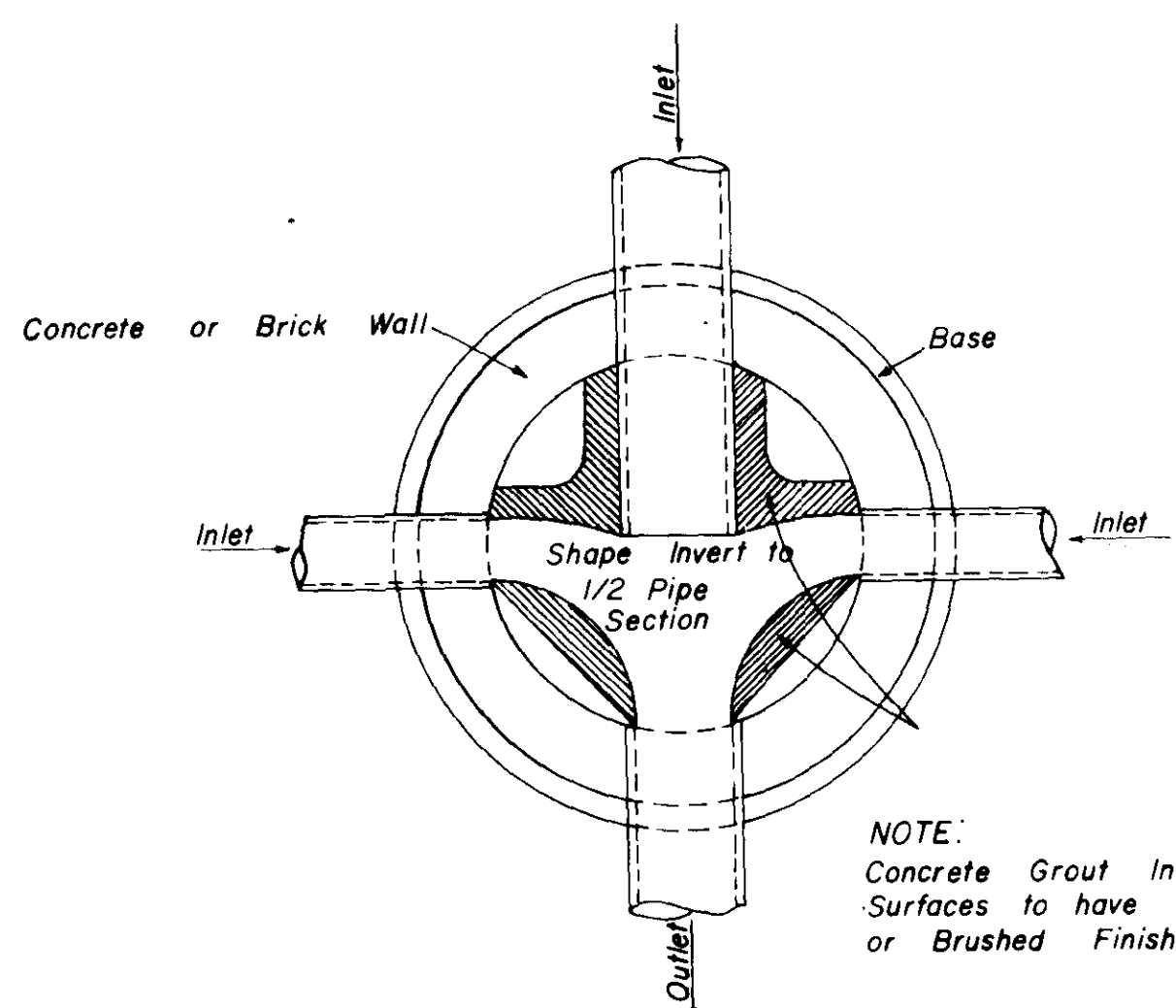
NOTE: All Manhole Joints to be Rubber Gasket

No. 4  $\emptyset$  Bars at 10" C.C. on 48" M.H.  
No. 4  $\emptyset$  Bars at 9" C.C. on 60" M.H.

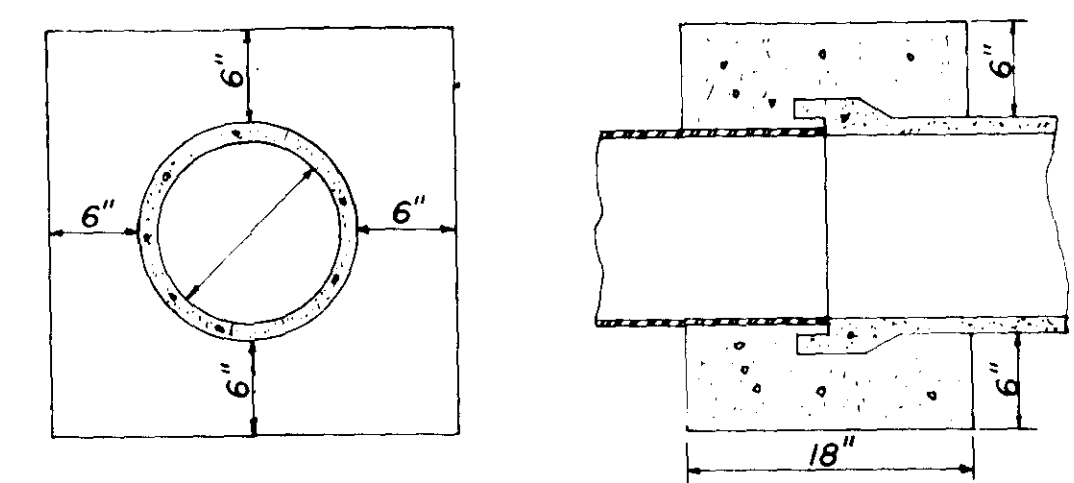
SECTION PRECAST CONCRETE MANHOLE



SEWER SERVICE MARKER

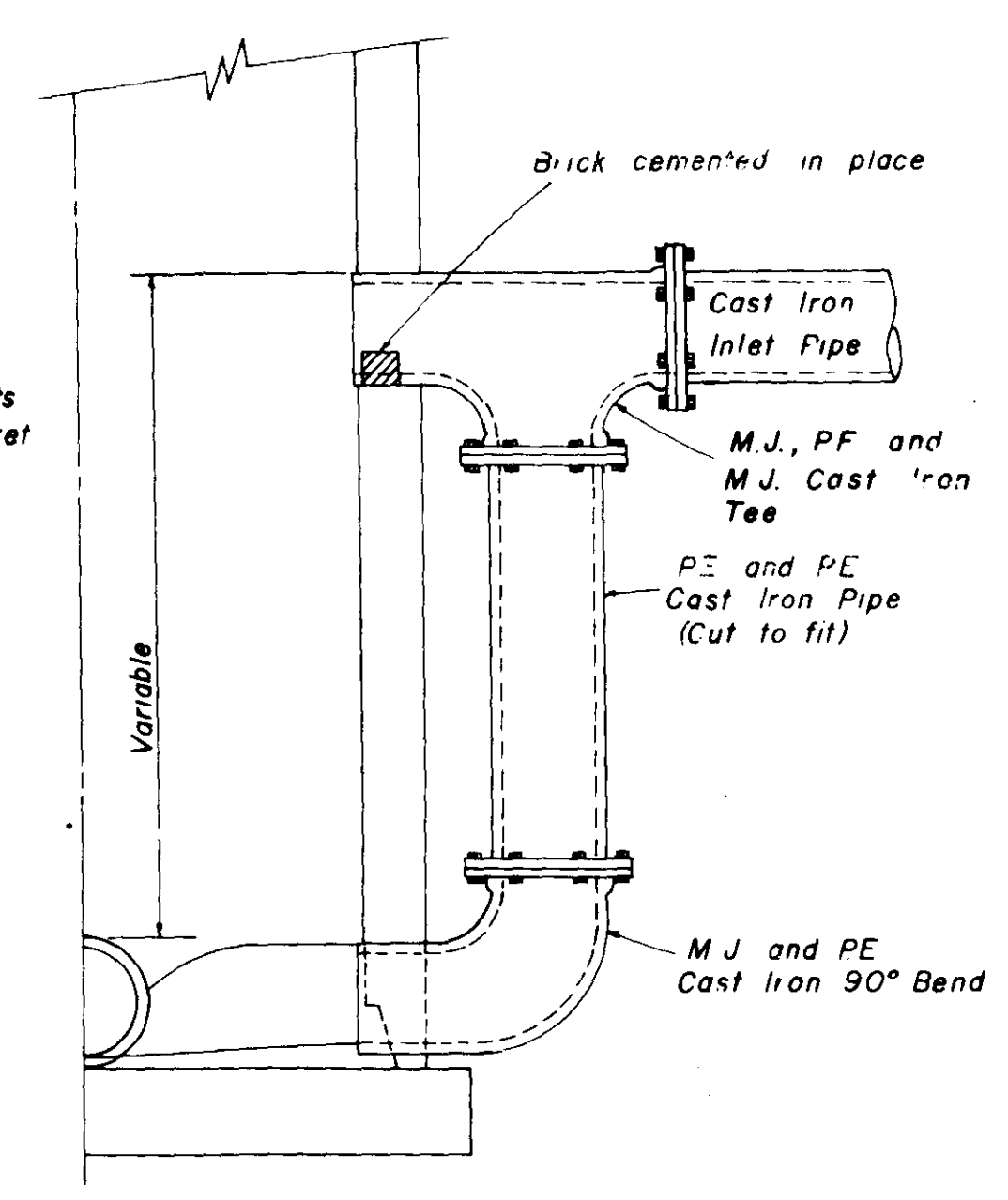


PLAN OF MANHOLE FLOW CHANNELS

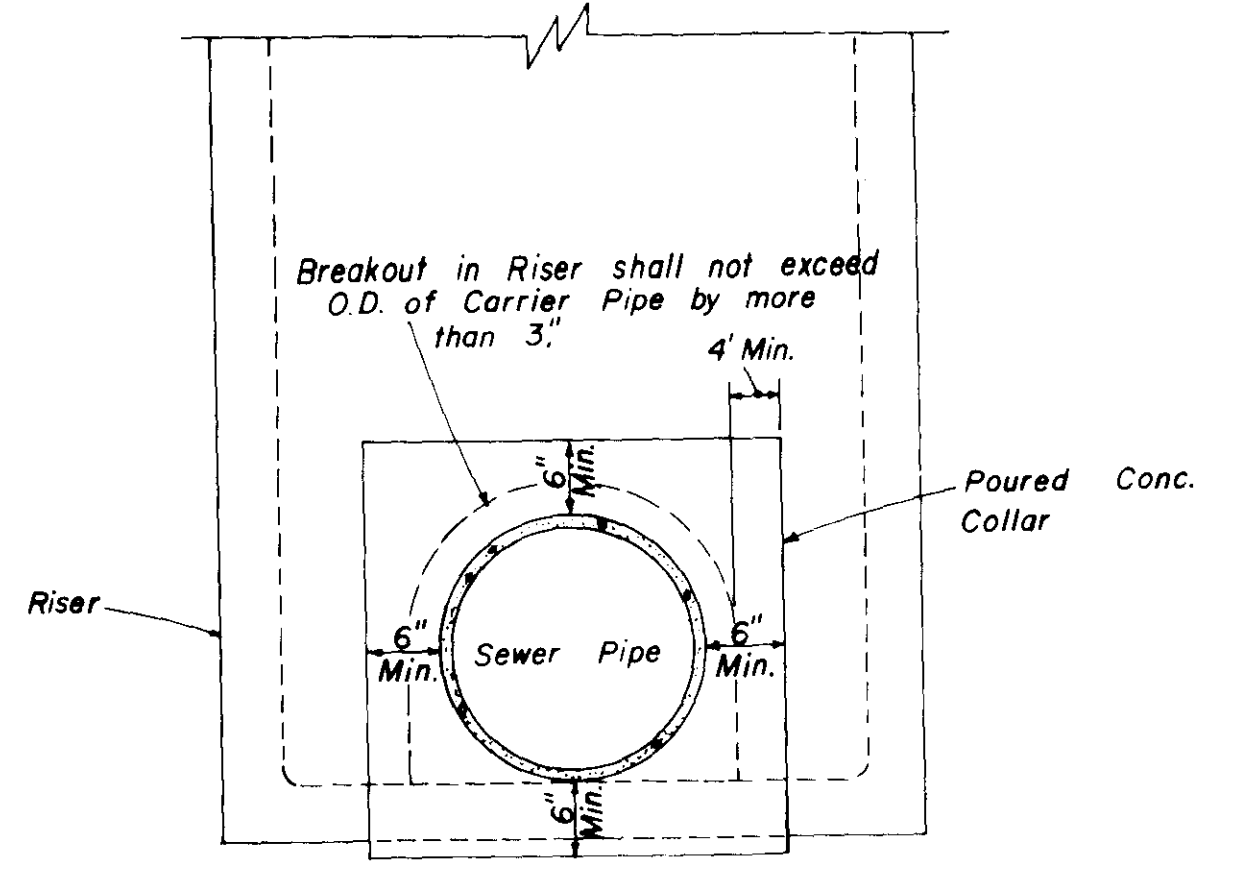


ELEVATION SECTION CONCRETE COLLAR DETAILS

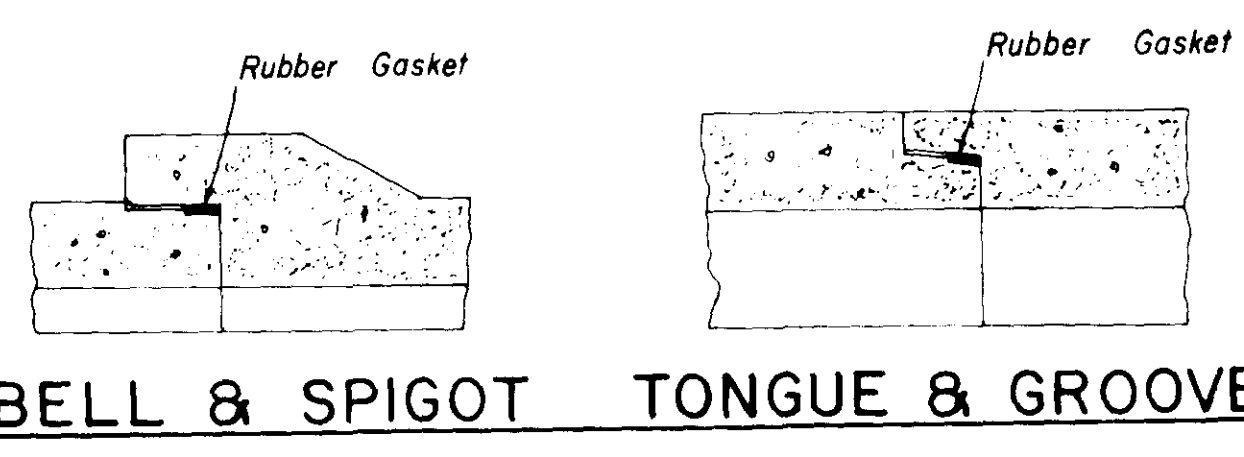
NOTE: All Lift Holes on each Section shall be sealed Watertight with non-shrink Grout inside and outside.



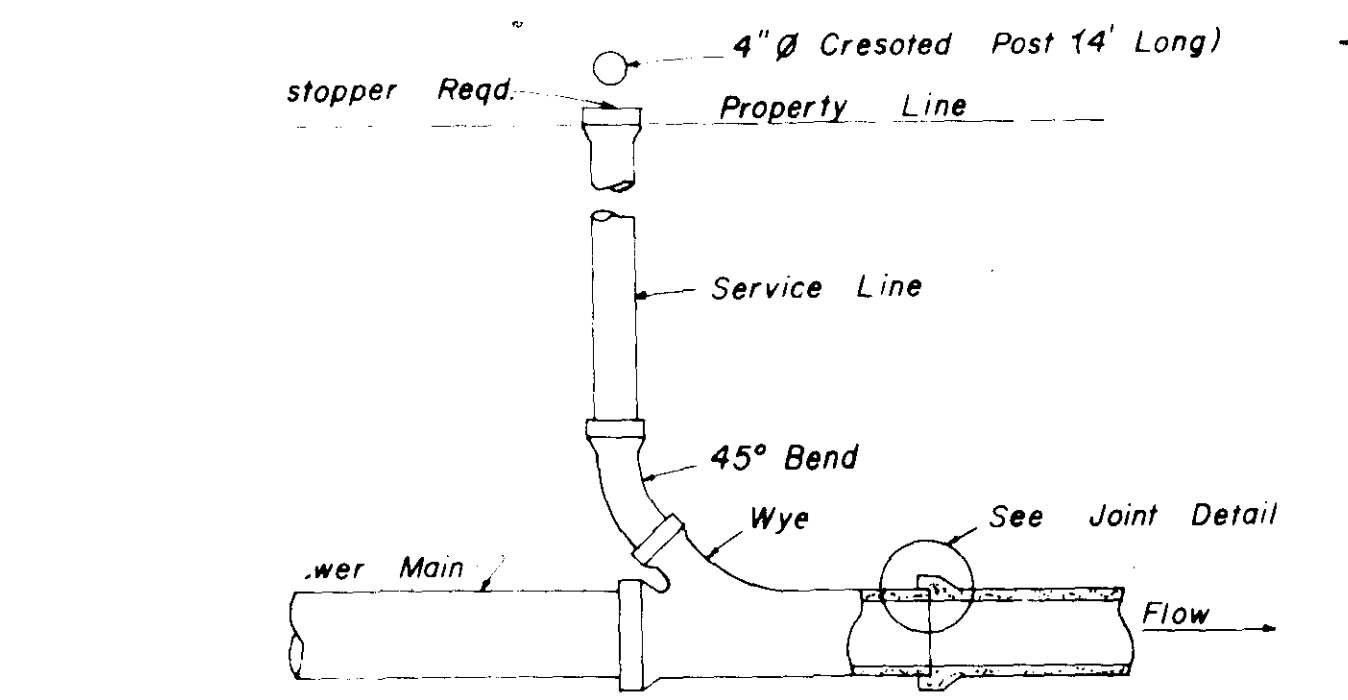
HALF SECTION MANHOLE WITH DROP CONNECTION



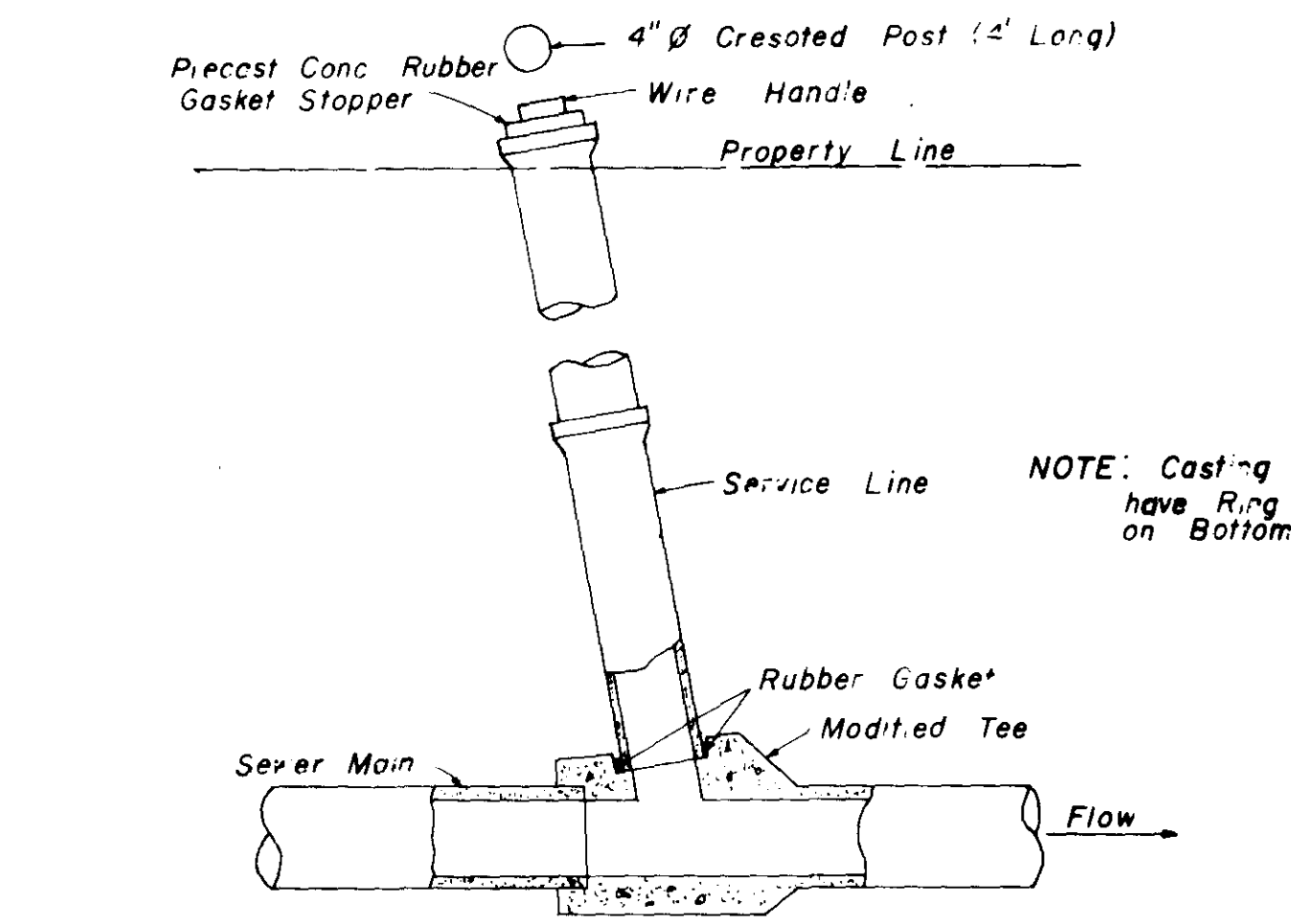
ELEVATION CONCRETE COLLAR AT MANHOLE CONNECTION



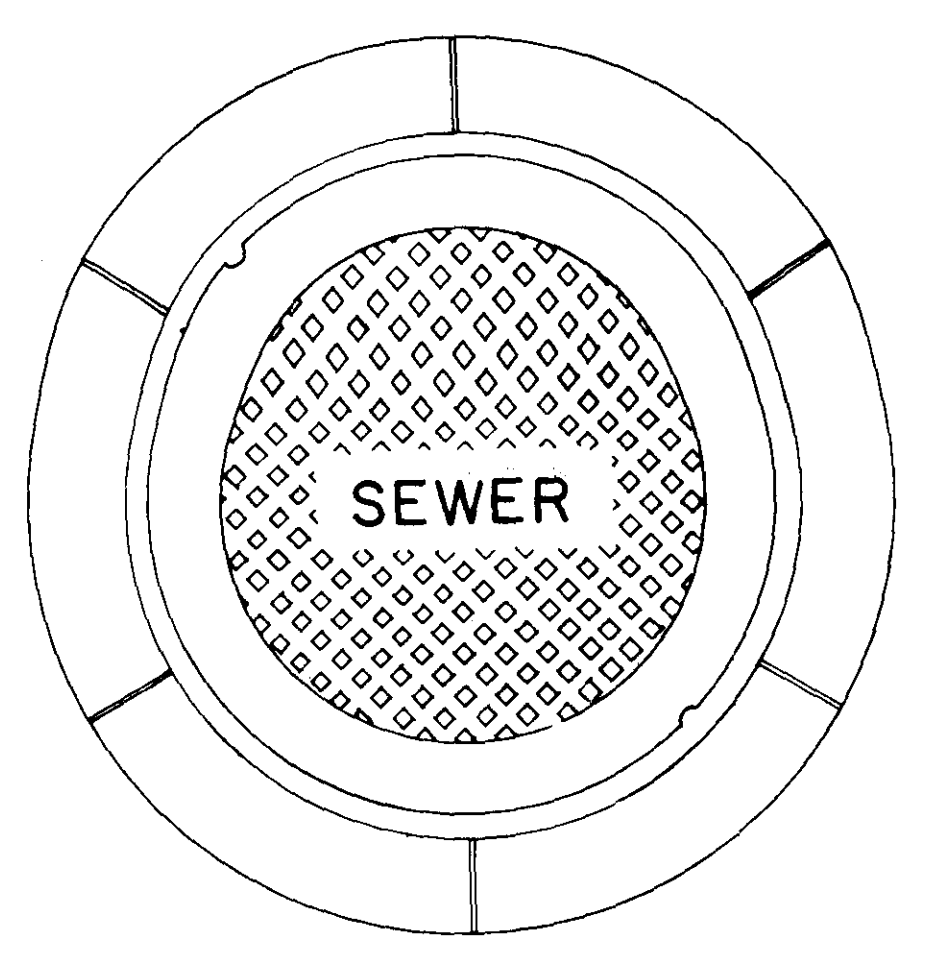
BELL & SPIGOT TONGUE & GROOVE JOINT DETAILS



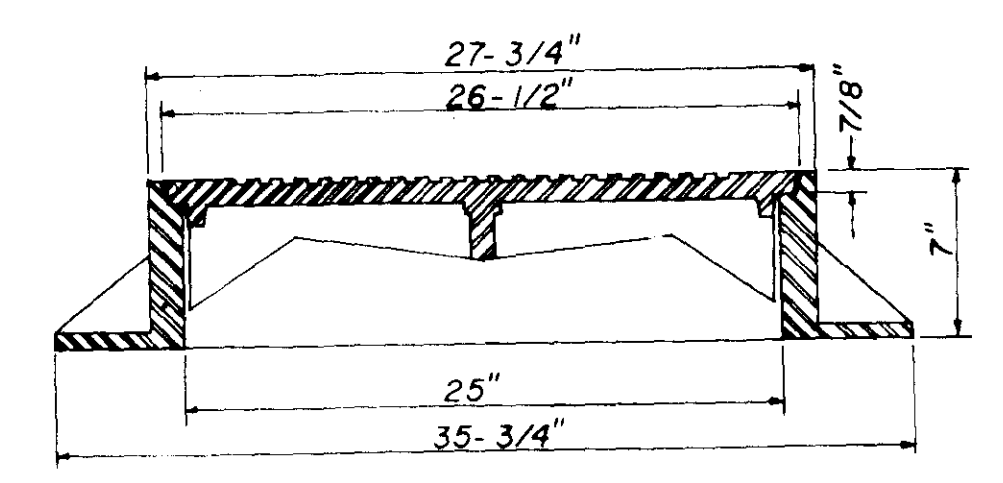
TYPICAL SERVICE TO PROPERTY LINE WITH WYE JOINT



TYPICAL SERVICE TO PROPERTY LINE WITH MODIFIED TEE JOINT

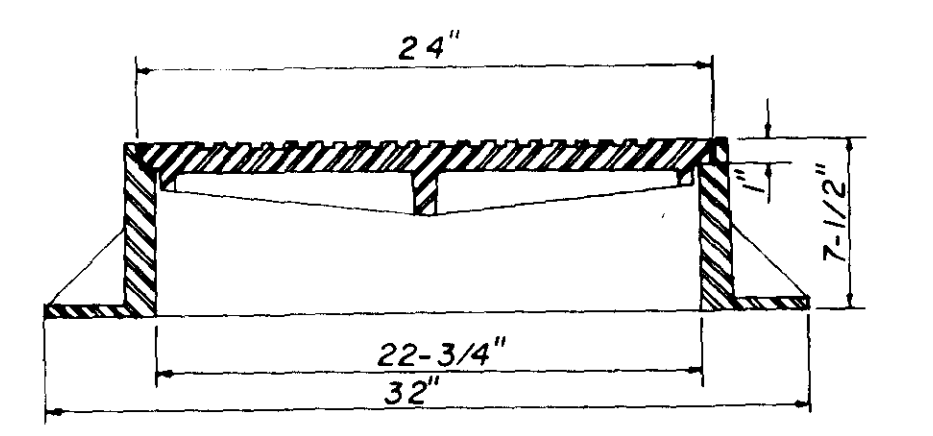


PLAN MANHOLE CASTING



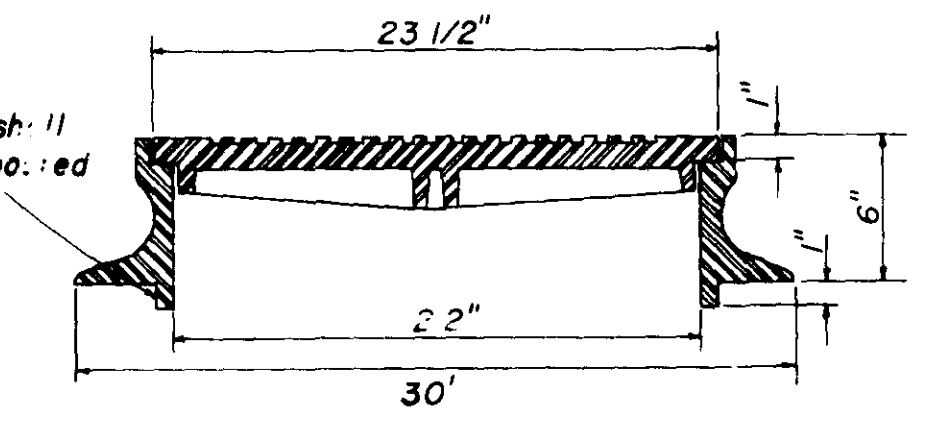
SECTION TYPE "A" MANHOLE CASTING

NOTE: 1. Use Type "A" Manhole Casting in Street R.O.W.  
2. Use Harper No. 2, City of Jackson Standard (420 lbs.) or Vulcan No. VM-15, City of Jackson Standard (420 lbs.)



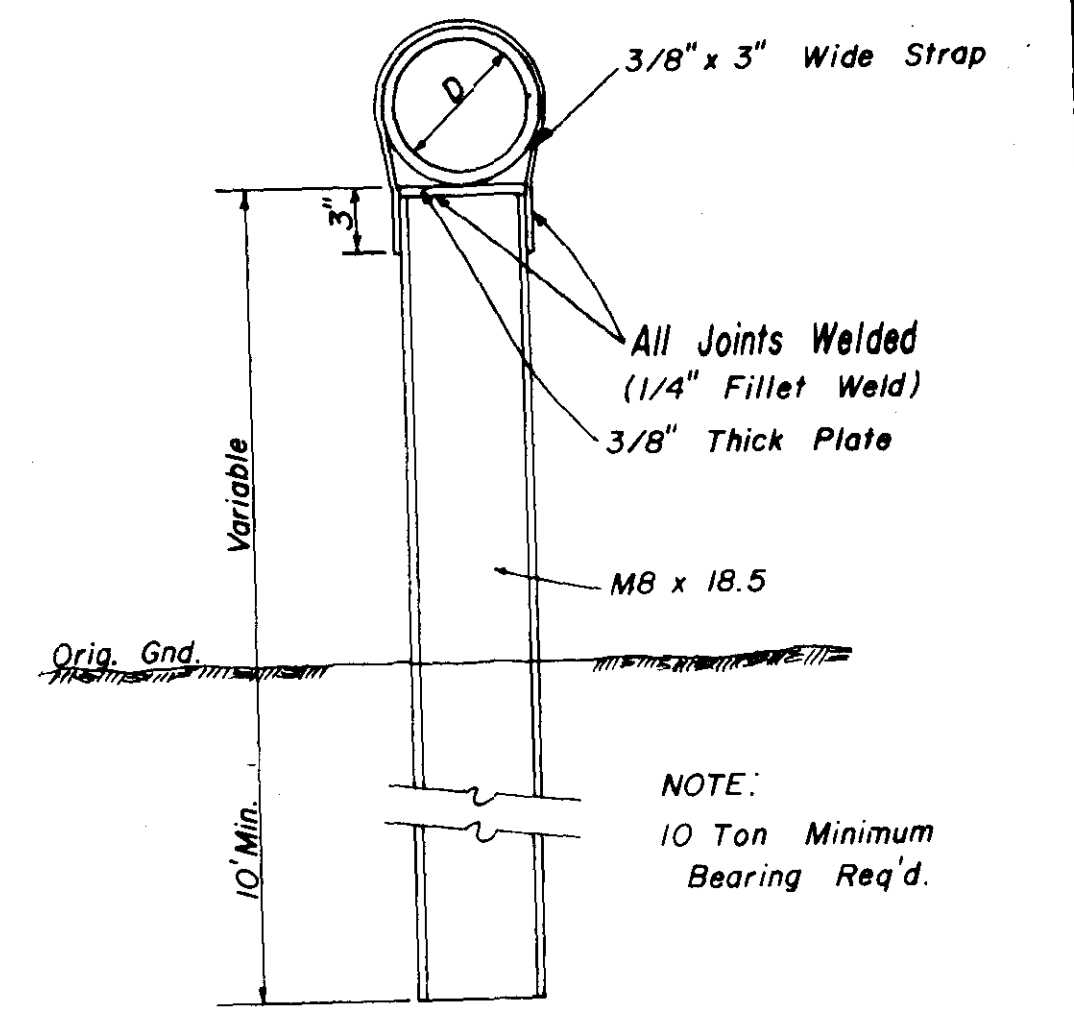
SECTION TYPE "B" MANHOLE CASTING

NOTE: 1. Use Type "B" Manhole Casting for any Manhole not in a Street R.O.W.  
2. Use Harper No. 1 (M.S.P.E. Standard) Light Weight (330 lbs.) or Vulcan No. VM-17 (300 lbs.) or Opelika Foundry No. C-2-1 (325 lbs.)

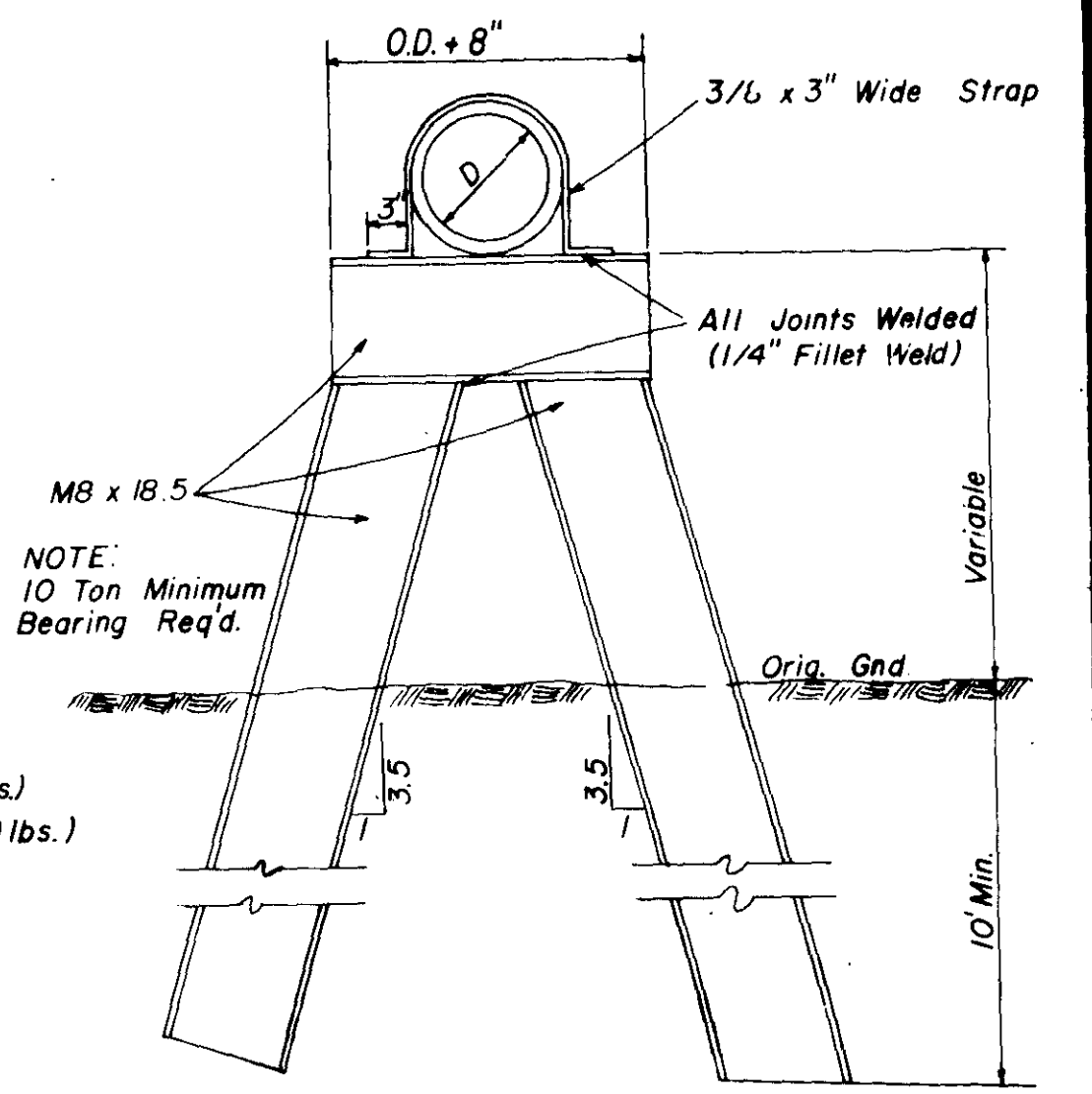


SECTION TYPE "C" MANHOLE CASTING

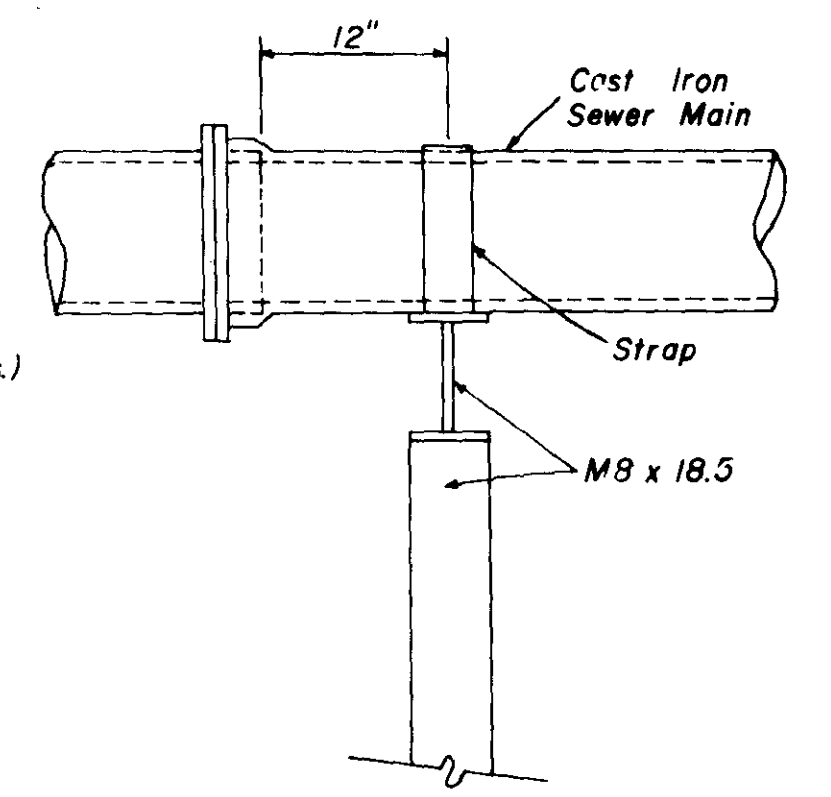
NOTE: 1. Use Type "C" Manhole Casting for Precast Manhole not in a Street R.O.W.  
2. Use Harper No. 8 (330 lbs.) or Neenah No. R-1779 (300 lbs.) or Vulcan No. VM-7 (330 lbs.)



DETAIL TYPE "A" PIER



DETAIL TYPE "B" PIER



SIDE ELEVATION TYPE "B" PIER

SANITARY SEWER STANDARD DETAILS

JOE A. WAGGONER Civil Engineer - Brandon/Jackson, Miss.			
DRAWN BY: H.J.	DATE: OCT 1982	CHECKED BY: J.A.W.	SCALE: AS SHOWN
			5 OF 5