

CITY OF RIDGELAND, MISSISSIPPI

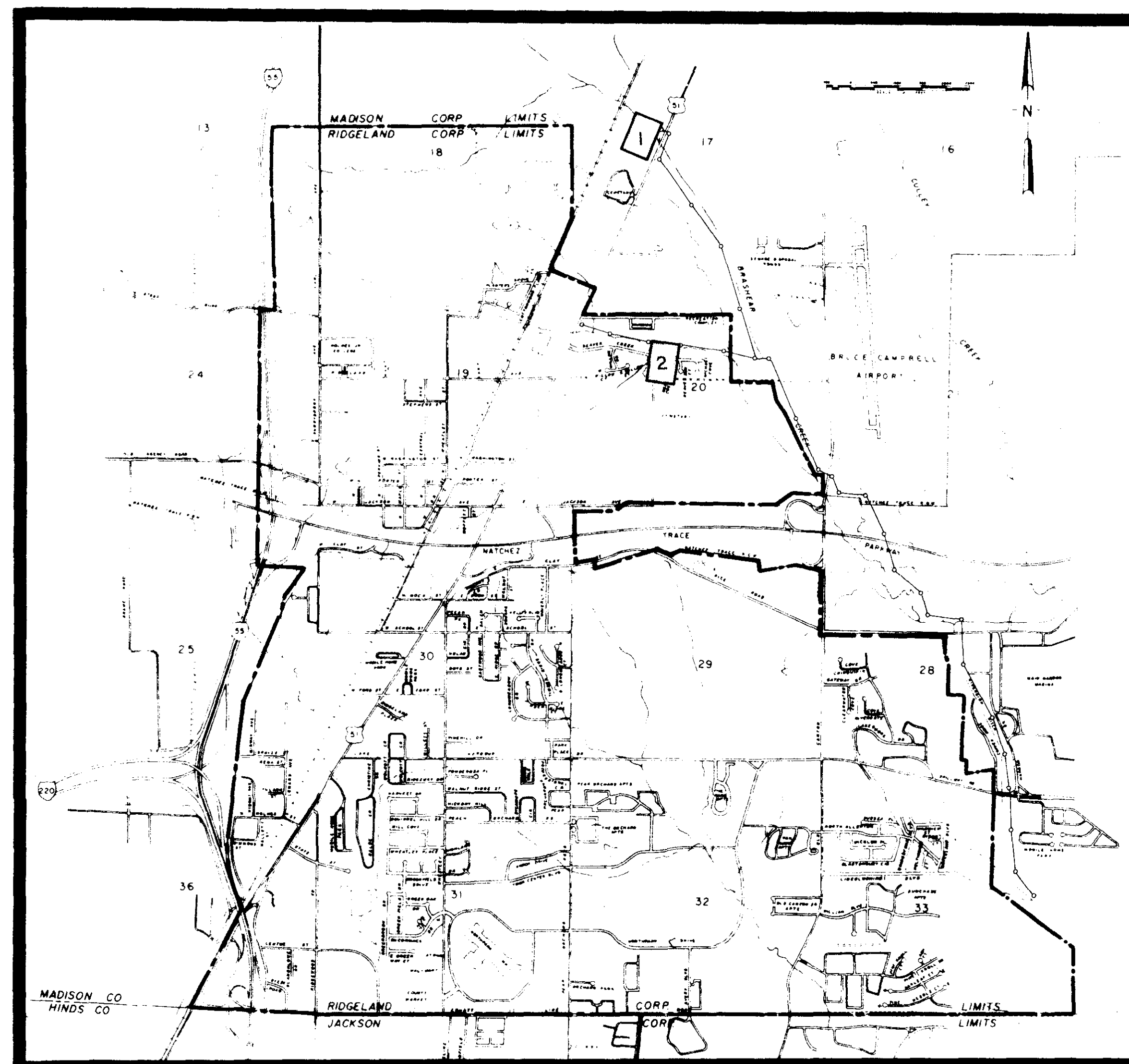
CULLEY-BRASHEAR REGIONAL INTERCEPTOR

SEWER CONNECTIONS

Mayor:
Hite B. Wolcott

Mayor Pro Tem:
Hilda Boyd

City Attorney:
Milton Case



Aldermen:
Al Bible
Hilda Boyd
Harvey Carr, Jr.
Gene McGee
Gilbert Sollek

Public Works Director
Horace M. Ross

SHEET INDEX:

SHEET NO. 1. NORTH LAGOON CONNECTION
2. BEAVER CREEK METERING STATION CONNECTION

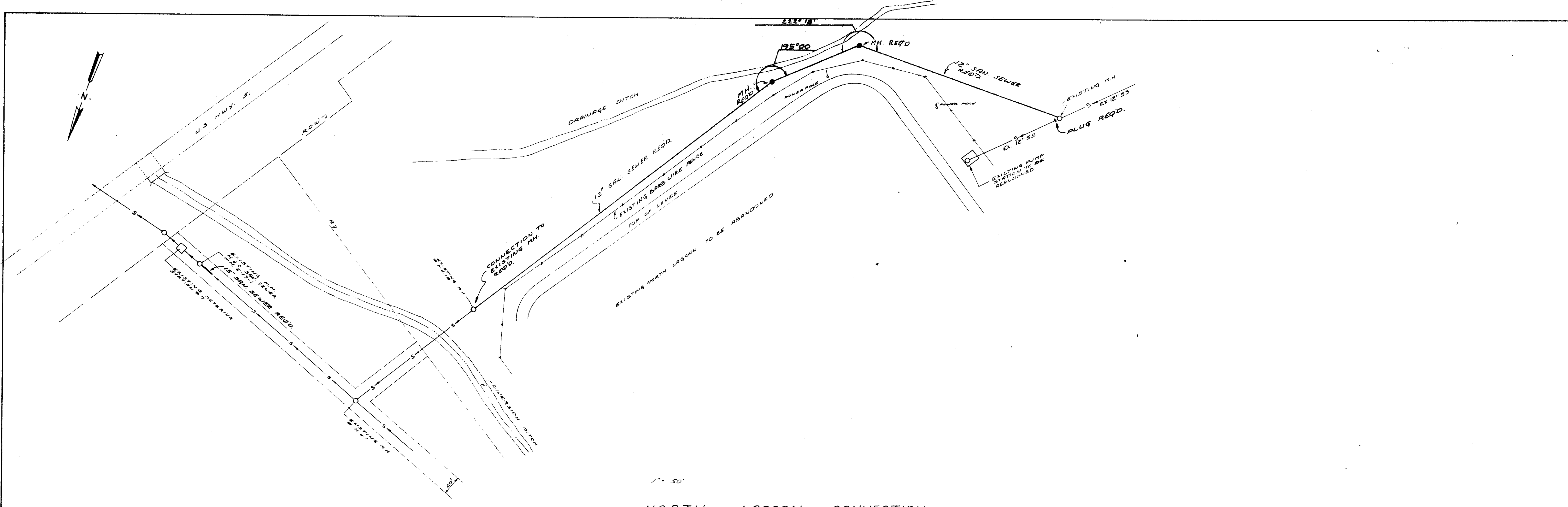
Waggoner Engineering Inc.
Consulting Engineers
Jackson / Brandon, Ms.



PWP-00314

NOTE BOOK NO. _____
 PLOTTED, ALIGNED, CHECKED BY: _____
 AT: _____

NOTE BOOK NO. _____
 QUANTITIES CHECKED BY: _____
 S. I. I. NOTED BY: _____
 STRUCTURE NOTATION CHECKED BY: _____



NORTH LAGOON CONNECTION

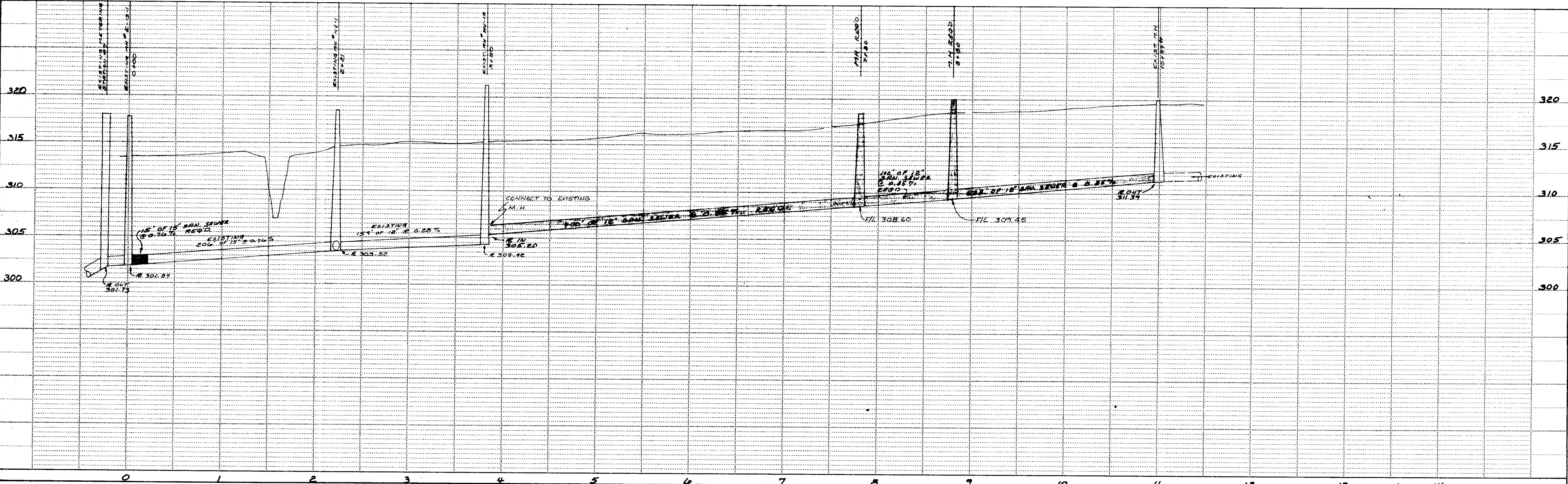
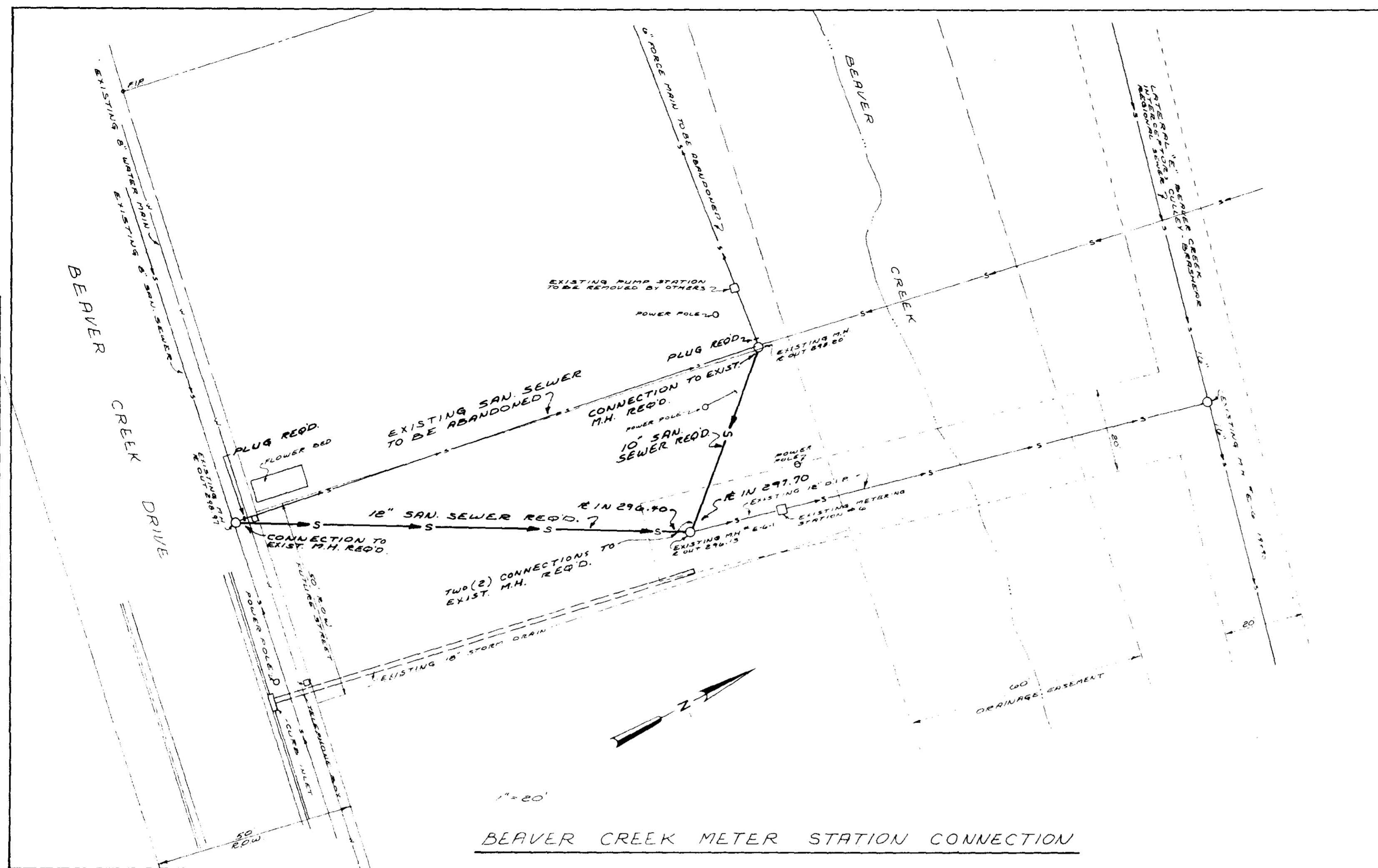


PLATE 1-SINGLE PLAN AND PROFILE-FULL DOT
 PRINTED IN U.S.A.

WAGGONER ENGINEERING INC.
 Consulting Engineers - Jackson / Brandon, MS

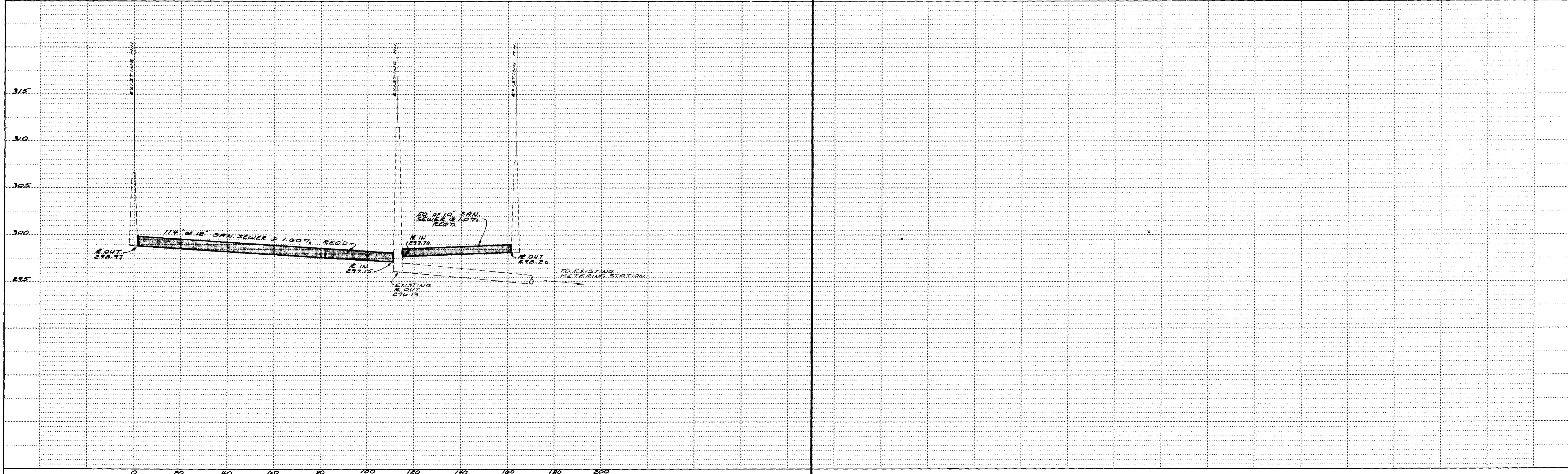
SHEET NO. 1

NOTE BOOK NO. _____
 CHECKED BY _____
 DATE _____



BEAVER CREEK METER STATION CONNECTION

NOTE BOOK NO. _____
 CHECKED BY _____
 DATE _____



HIGHWAY FEDERAL AID SHEET
 PLATE 1-SINGLE PLAN AND PROFILE-FULL DOT
 PRINTED IN U.S.A.

WAGGONER ENGINEERING INC.
 Consulting Engineers - Jackson / Brandon, MS