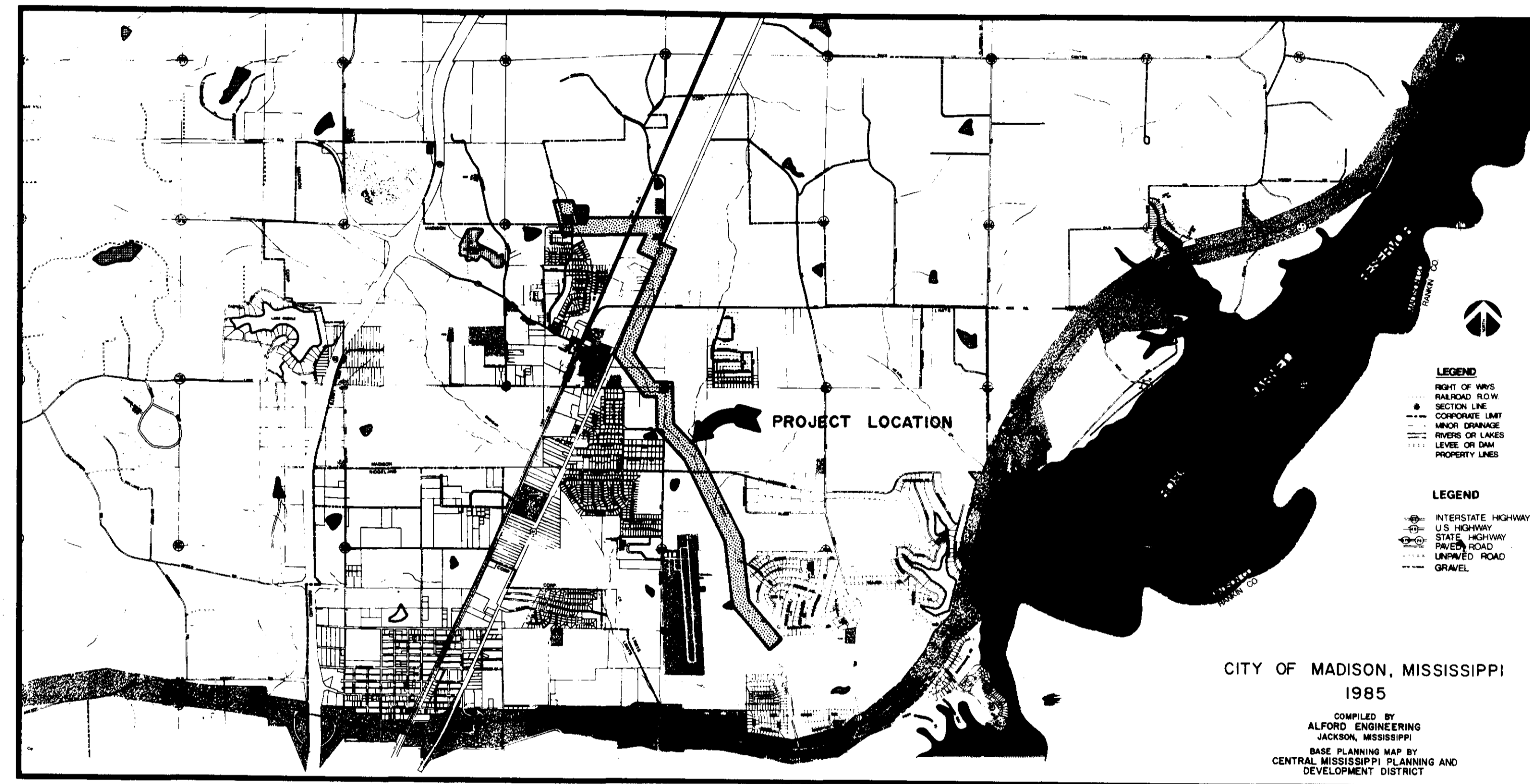


CULLEY CREEK SEWER EXTENSION - CONTRACT 3 CULLEY - BRASHEAR REGIONAL SEWER MADISON COUNTY SEGMENT



VICINITY MAP
JULY 1986

CITY OF JACKSON, MISSISSIPPI

CITY PROJECT NO. 182.5
EPA PROJECT NO. C280392-020

RECORD DRAWINGS
Dec. 1988

DESIGN ENGINEER

ALFORD ENGINEERING
CONSULTING ENGINEERS
JACKSON, MISSISSIPPI

REGIONAL SYSTEM ENGINEER

WAGGONER ENGINEERING CO., INC.
CONSULTING ENGINEERS
BRANDON, MISSISSIPPI

MAYOR

DALE DANKS, JR.

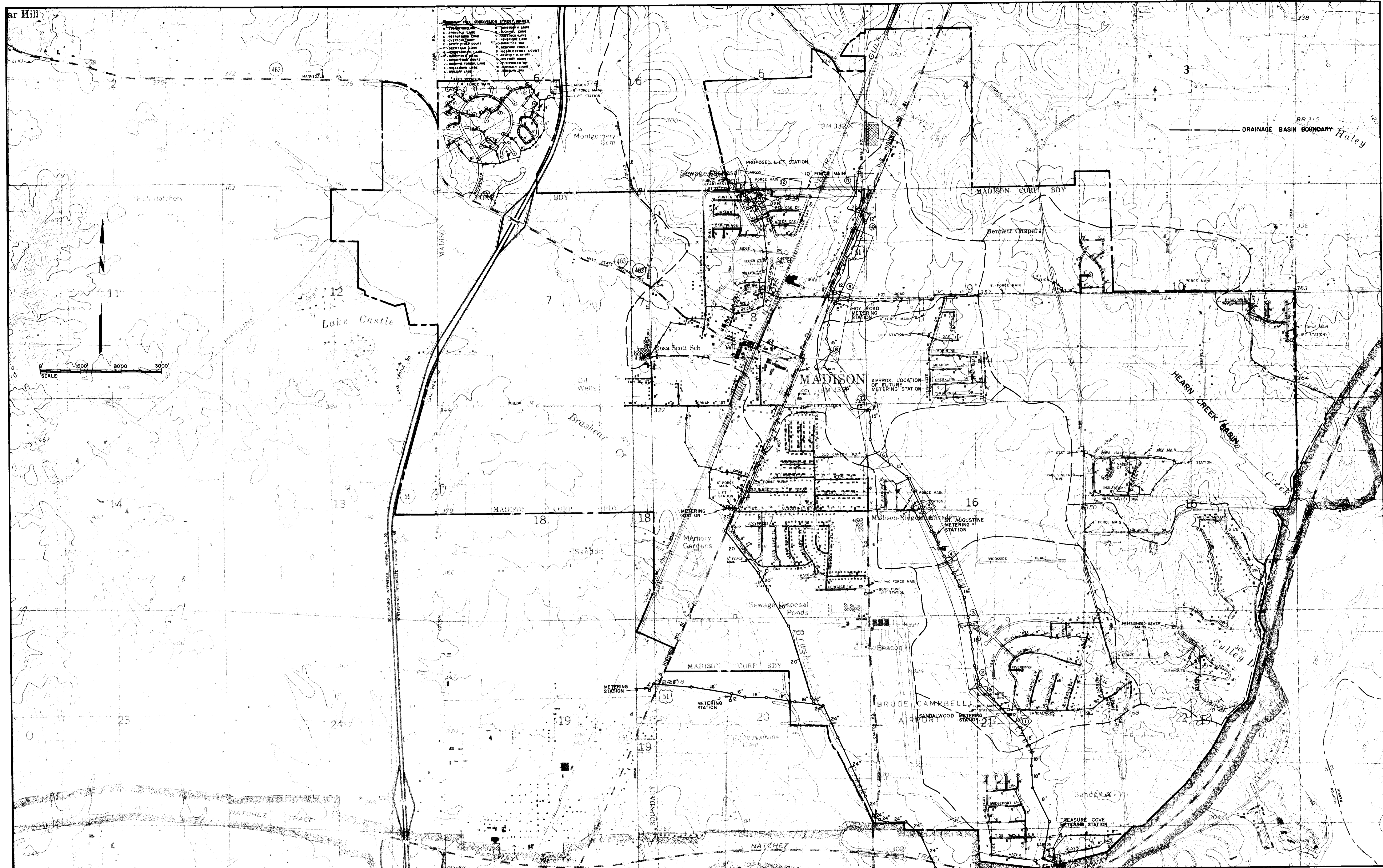
DIRECTOR OF PUBLIC WORKS

WILLIAM R. LEWIS, P. E.

CITY ENGINEER

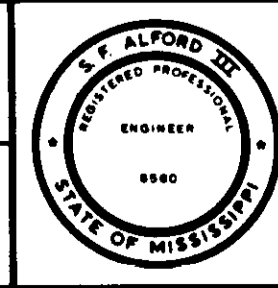
TED SOMERS, P. E.

PWP-00316



NO.	DATE	NATURE	BY	APP'D.

DESIGNED	DATE
S.F.A.	5/86
DRAWN	SCALE
T.A.H.	1"=1000'



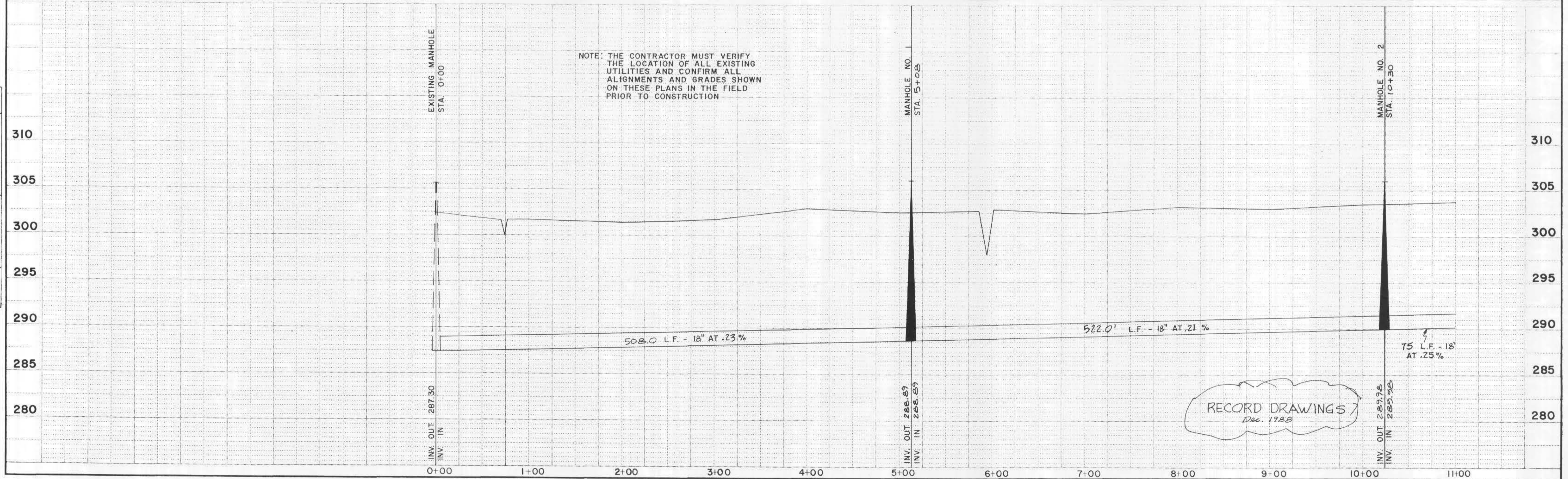
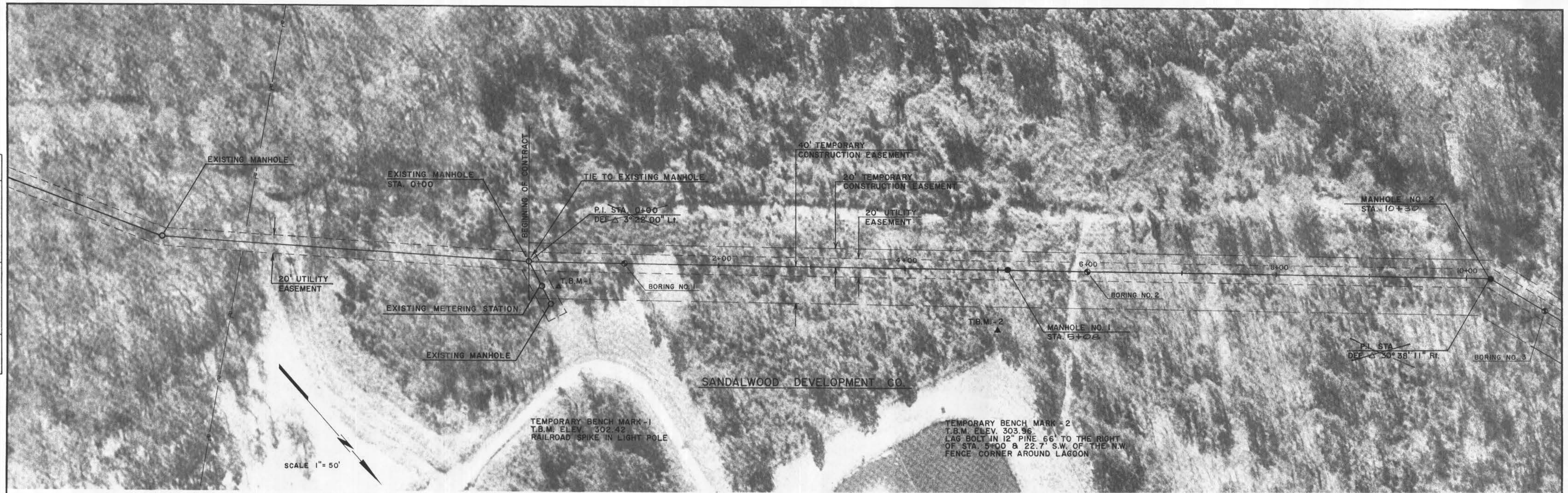
CULLEY - BRASHEAR INTERCEPTOR - CONTRACT 3
ALFORD ENGINEERING CONSULTING ENGINEERS
JACKSON, MISSISSIPPI

LAYOUT

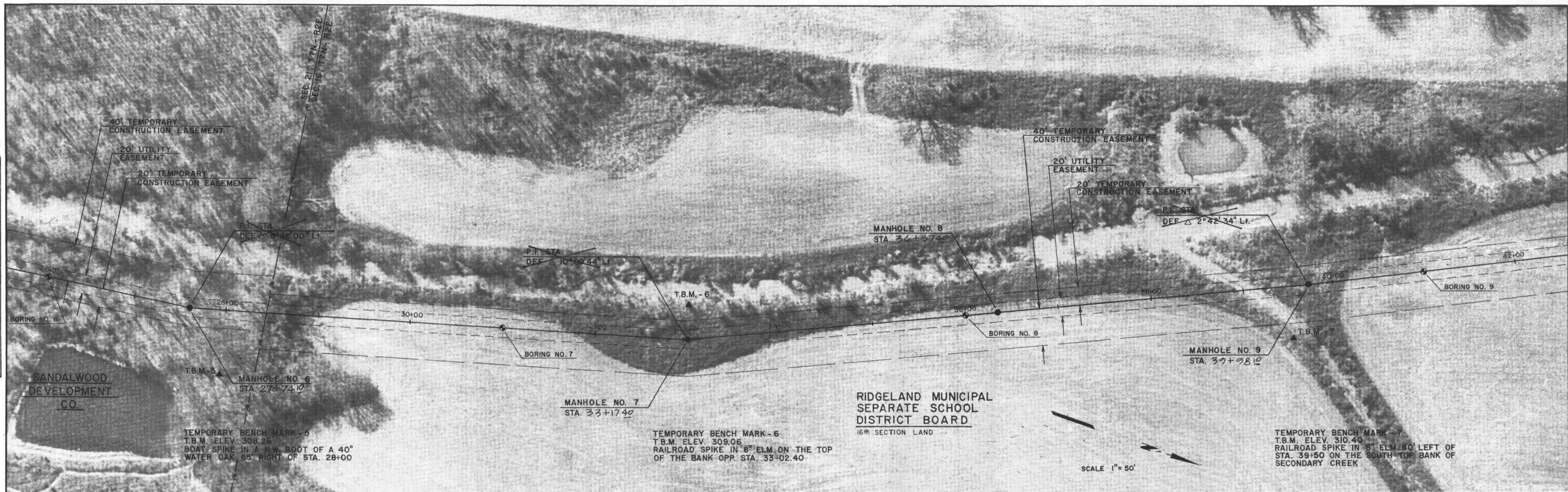
PROJECT NO.	
FILE NO.	SHEET NO.
M	L

DATE	
BY	
REVISIONS	
PLANNED	
ALIGNED	
CHECKED	
BY	
NO. OF WAY	
CHECKED	
NO.	

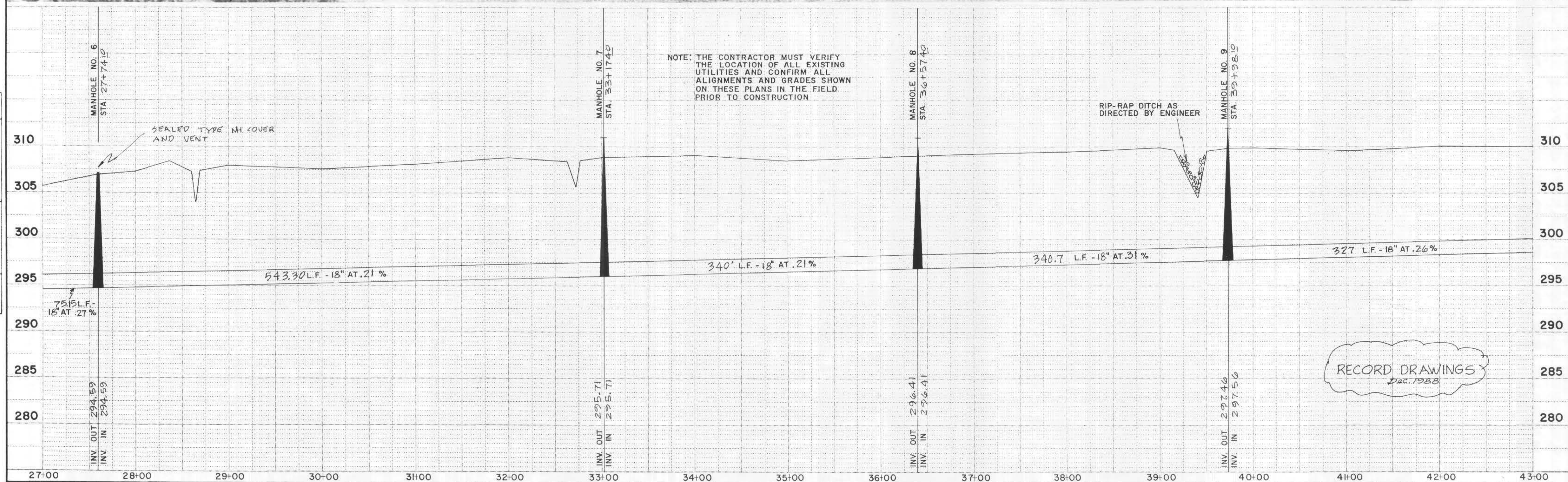
DATE	
BY	
REVISIONS	
PLANNED	
GRADES	
CHECKED	
BY	
NO. OF	
NOTES	
CONSTRUCTION	
STATUS	
CHANGED	
NO.	



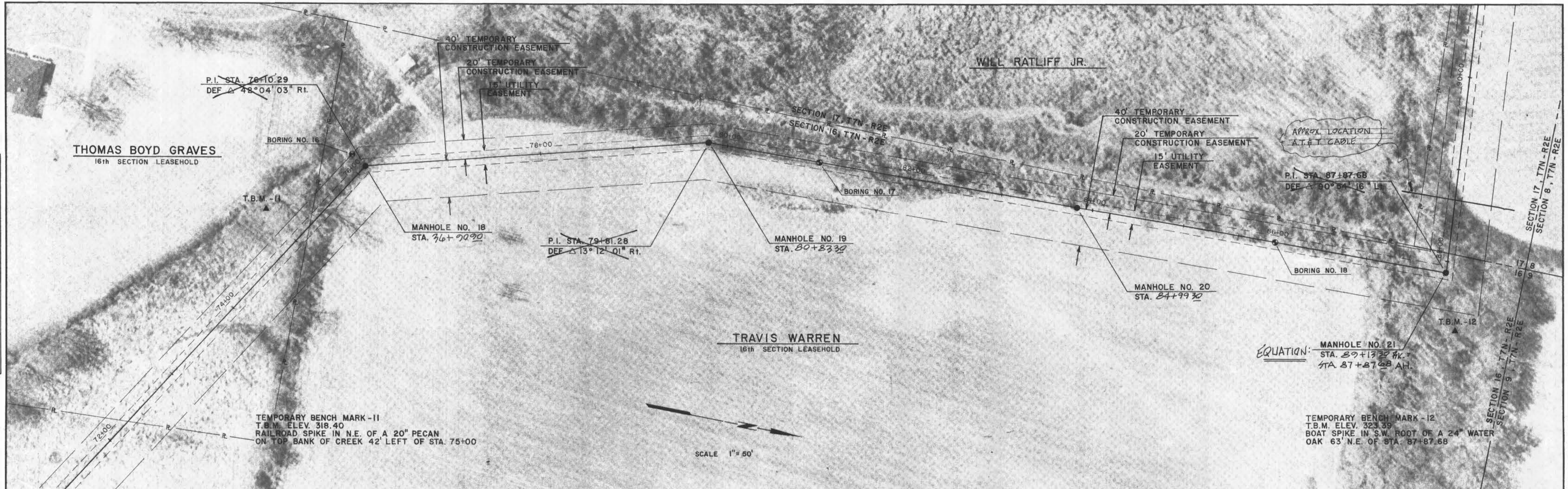
DATE	
BY	
PLAN	
SURVEYED	
PLOTTED	
ALIGNED	
CHECKED	
DATE	
BY	
NOTE BOOK	
NO.	



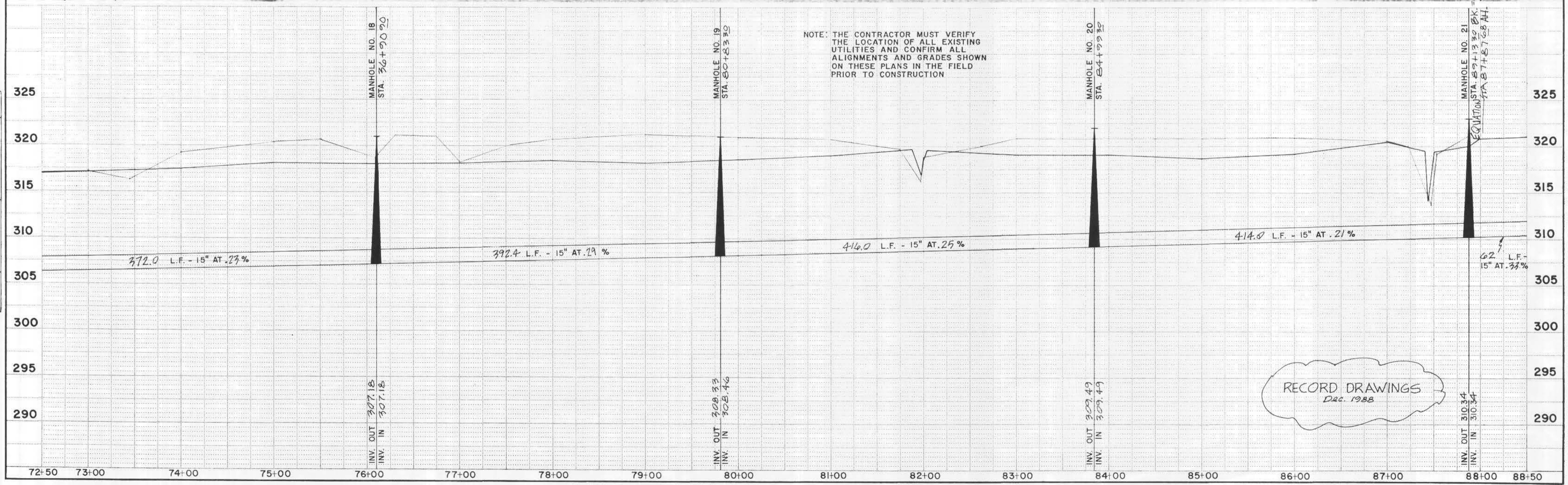
DATE	
BY	
PROFILE	
SURVEYED	
PLOTTED	
GRADES CHECKED	
DATE	
BY	
NOTE BOOK	
NO.	



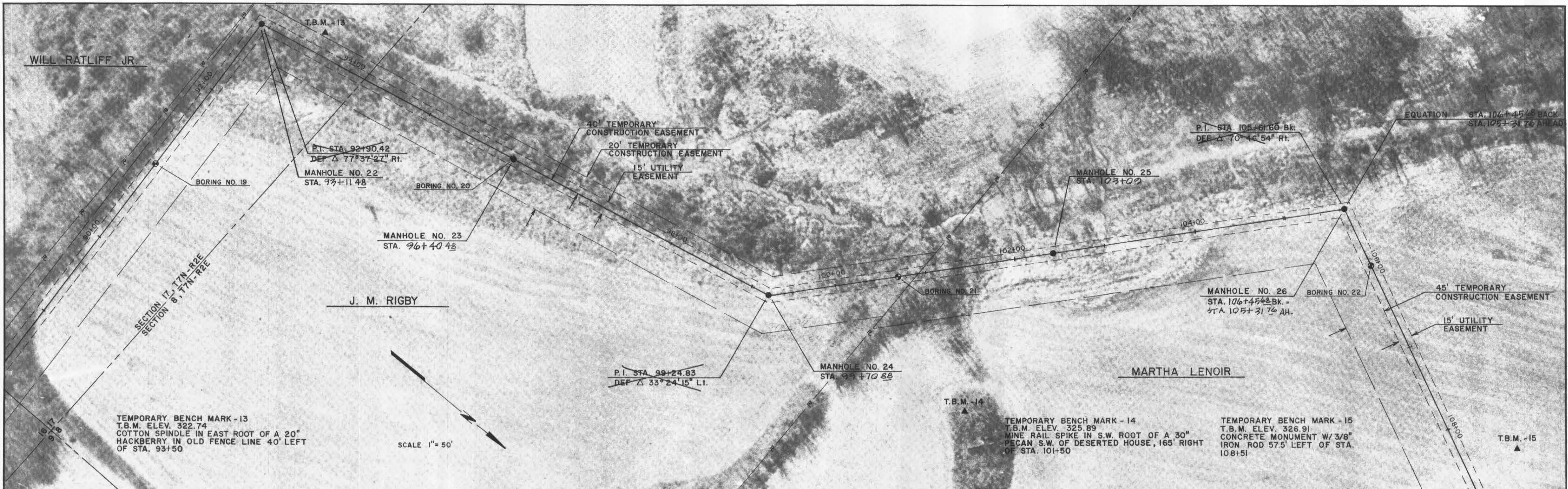
DATE	
BY	
SURVEYED	
PLOTTED	
ALIGNED CHECKED	
RI. OF WAY CHECKED	
PLAN	
NOTE BOOK	
NO.	



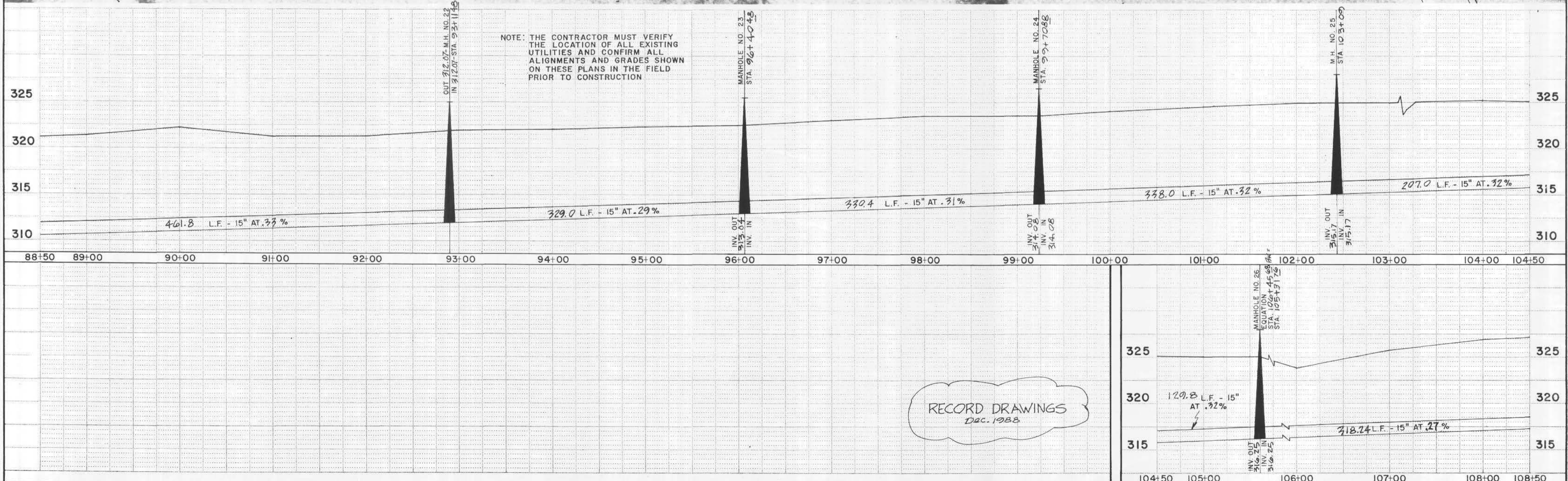
DATE	
BY	
SURVEYED	
PLOTTED	
GRADES CHECKED	
STRUCTURE NOTATIONS CHECKED	
PROFILE	
NOTE BOOK	
NO.	



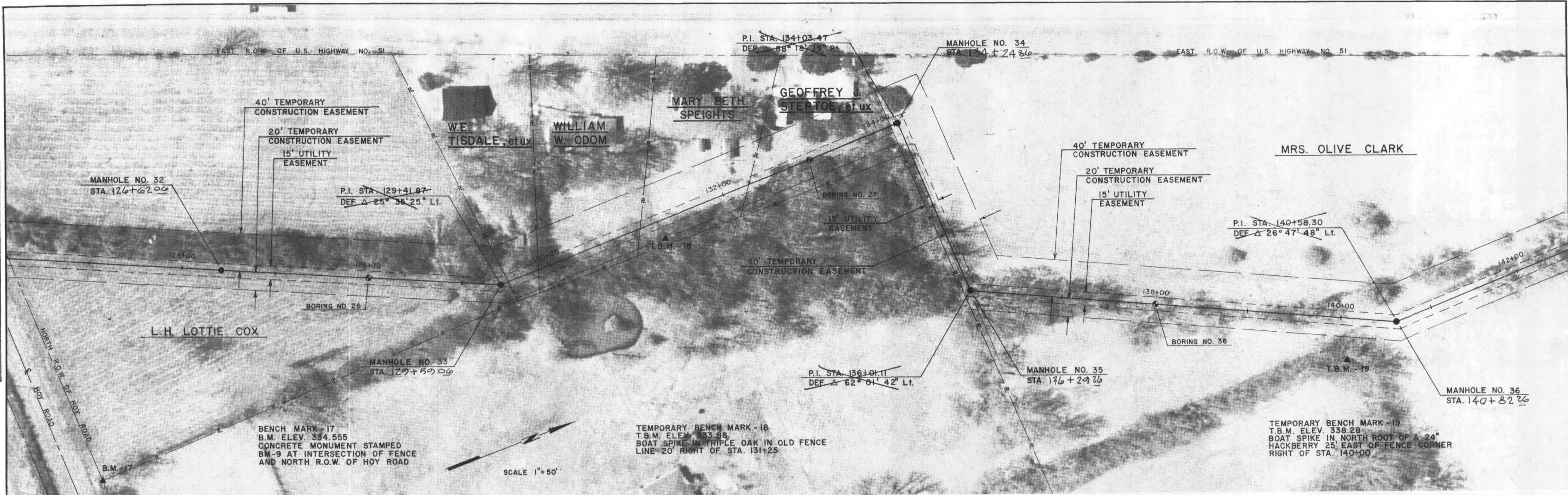
DATE	
BY	
SHAWNEE	
PLANNED	
NOTE BOOK	
NO.	



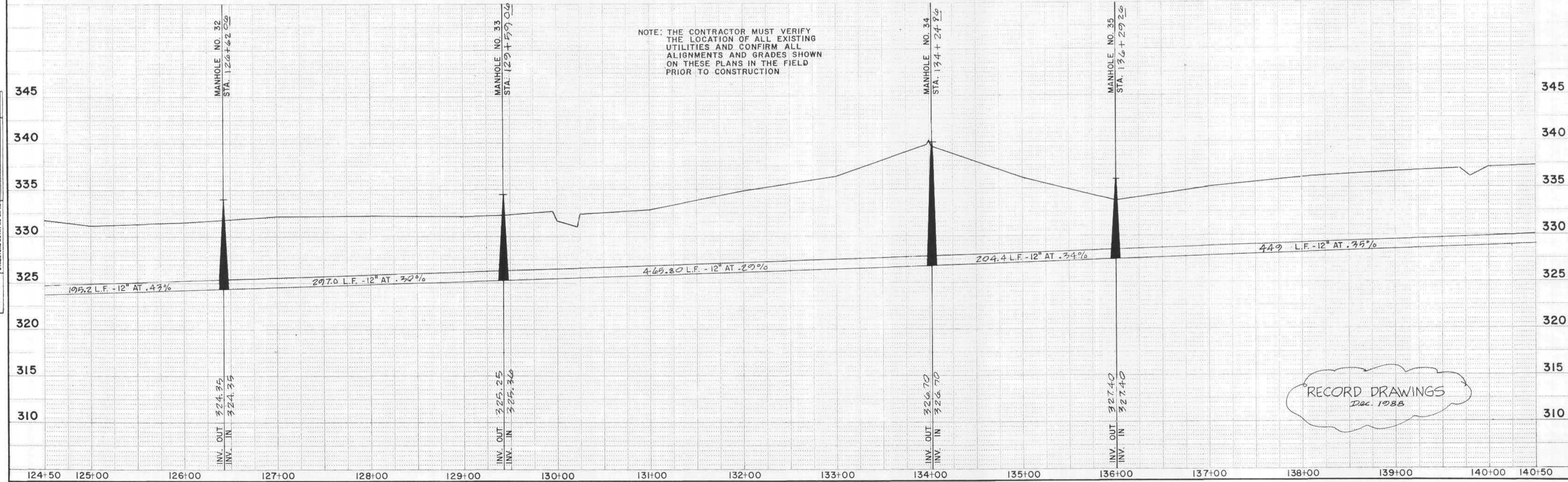
DATE	
BY	
SHAWNEE	
PLANNED	
NOTE BOOK	
NO.	



DATE	
BY	
PLAN	
SURVEYED	
PLOTTED	
ALIGNED	
CHECKED	
BY	
DATE	

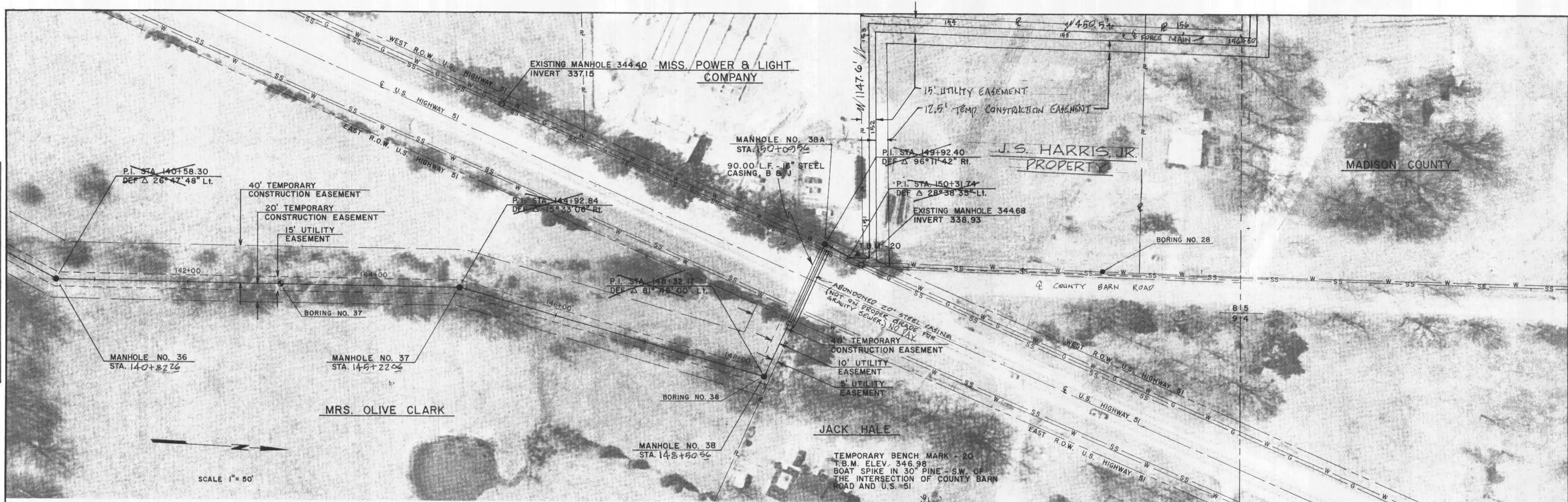


DATE	
BY	
PROFILE	
SURVEYED	
GRADES CHECKED	
BY	
DATE	

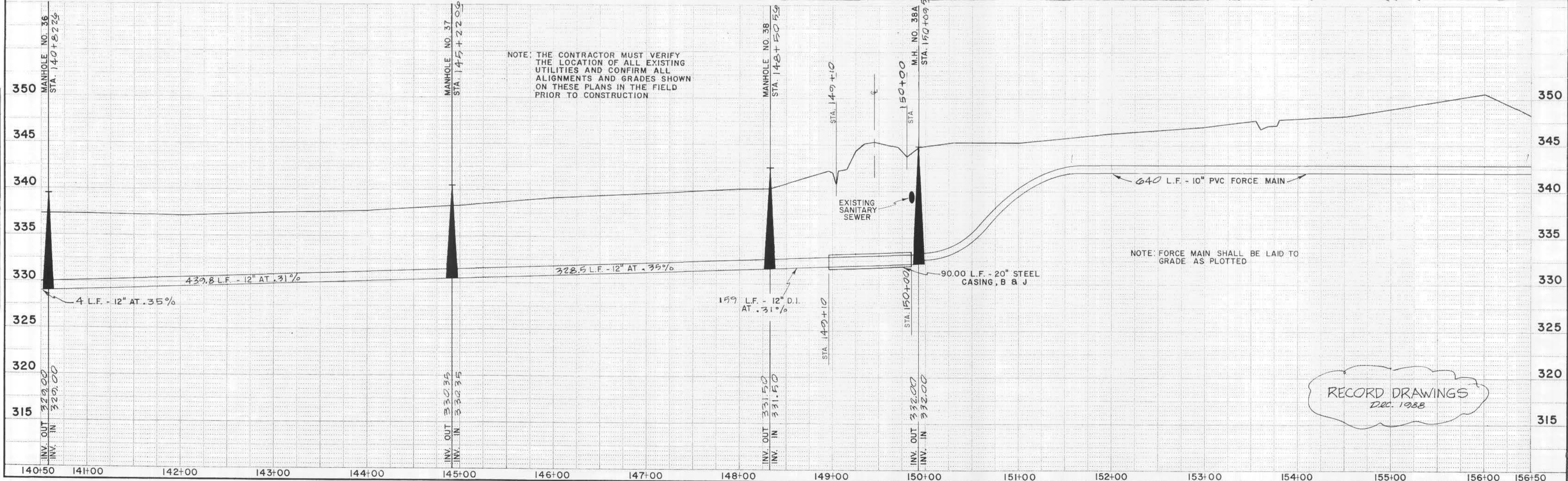


RECORD DRAWINGS
Dec. 1985

PLAN	SURVEYED	DATE
	PLOTTED	BY
	ALIGNED CHECKED	
	NOTE BOOK	
	NO.	

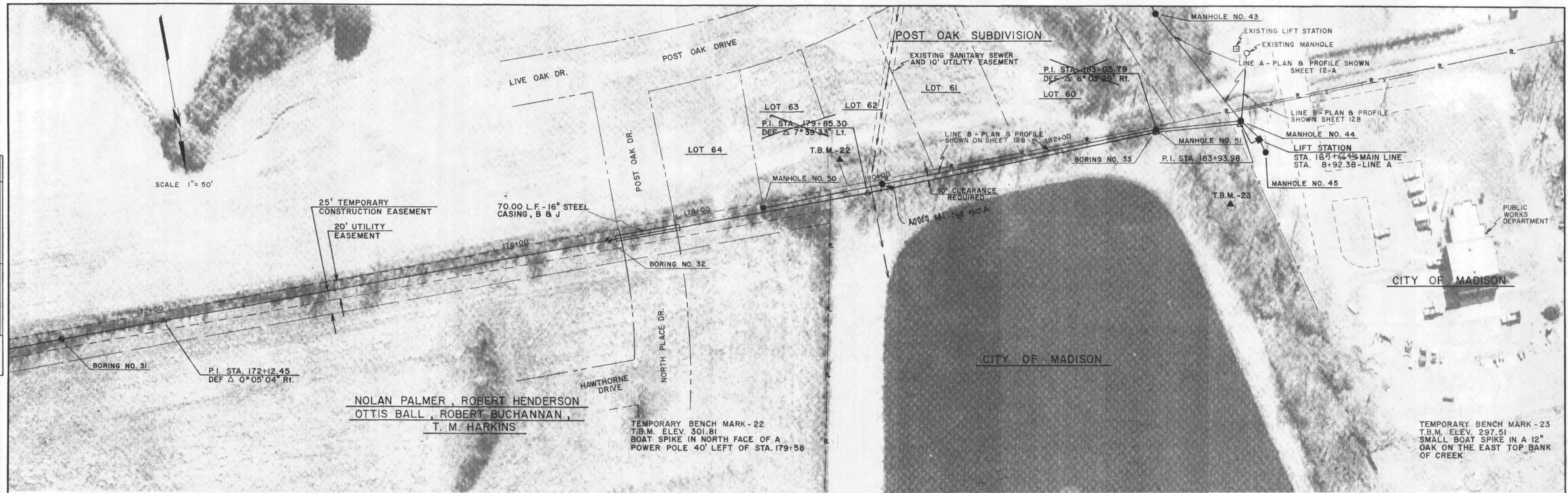


PROFILE	SURVEYED	DATE
	PLOTTED	BY
	ALIGNED CHECKED	
	NOTE BOOK	
	NO.	

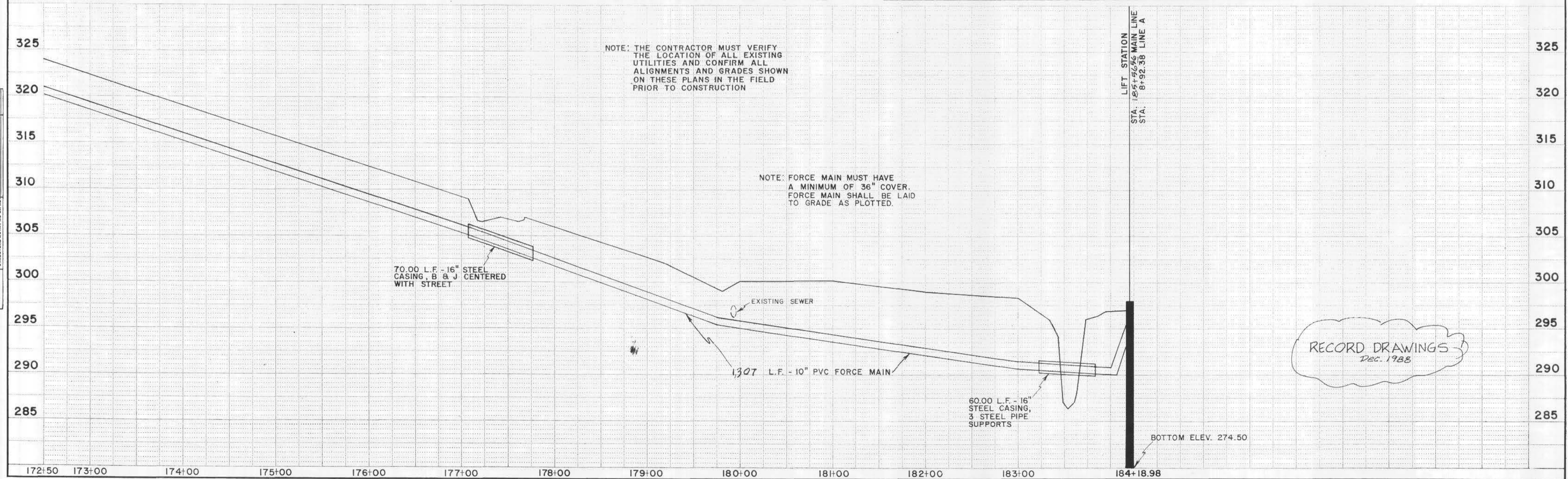


RECORD DRAWINGS
DEC. 1988

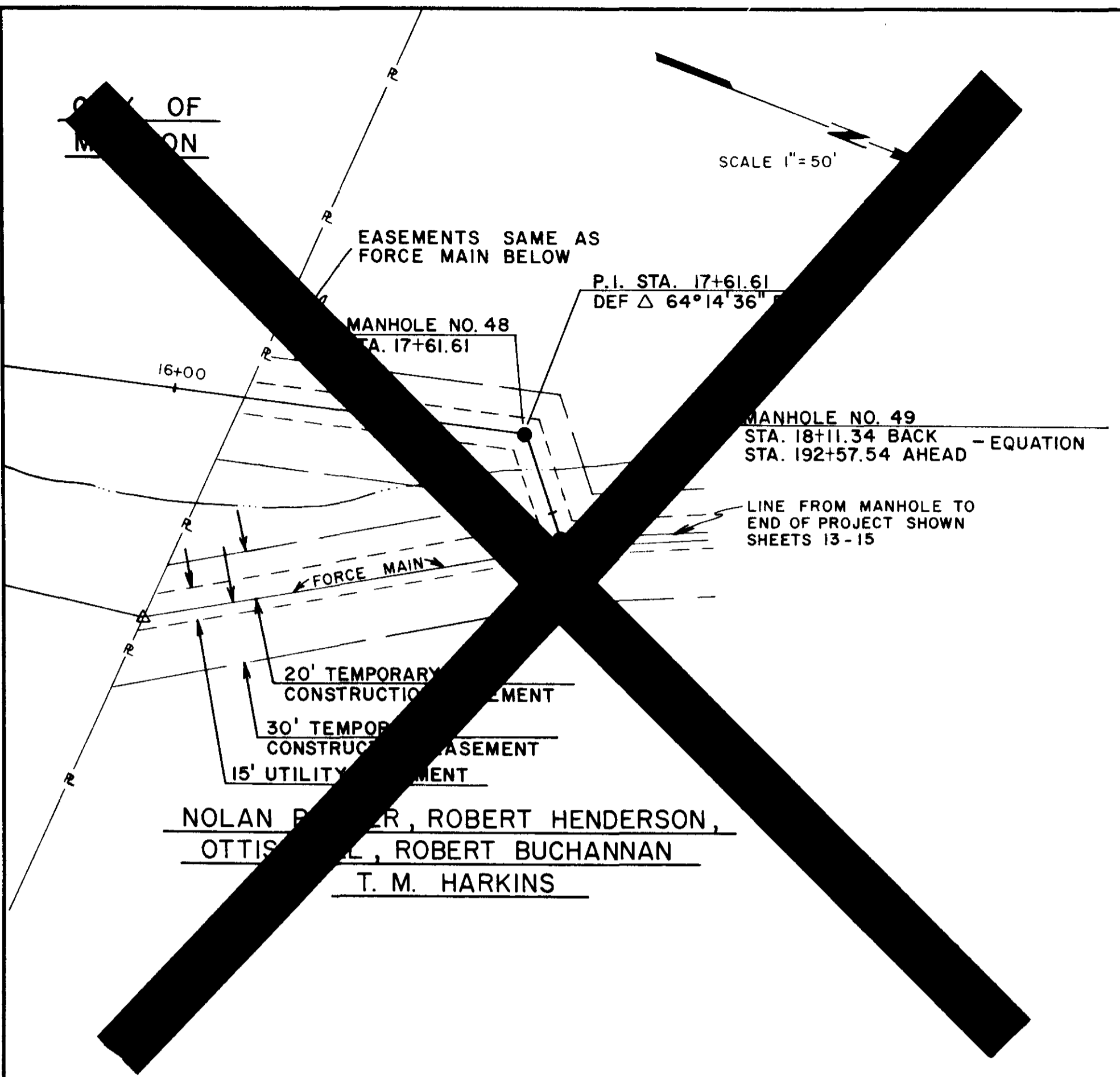
DATE	
BY	
REVISIONS	
NO.	
DESCRIPTION	
DATE	
BY	
PLAN	
NO.	
DATE	
BY	
REVISIONS	
NO.	
DESCRIPTION	
DATE	
BY	



DATE	
BY	
REVISIONS	
NO.	
DESCRIPTION	
DATE	
BY	
PROFILE	
NO.	
DATE	
BY	
REVISIONS	
NO.	
DESCRIPTION	
DATE	
BY	



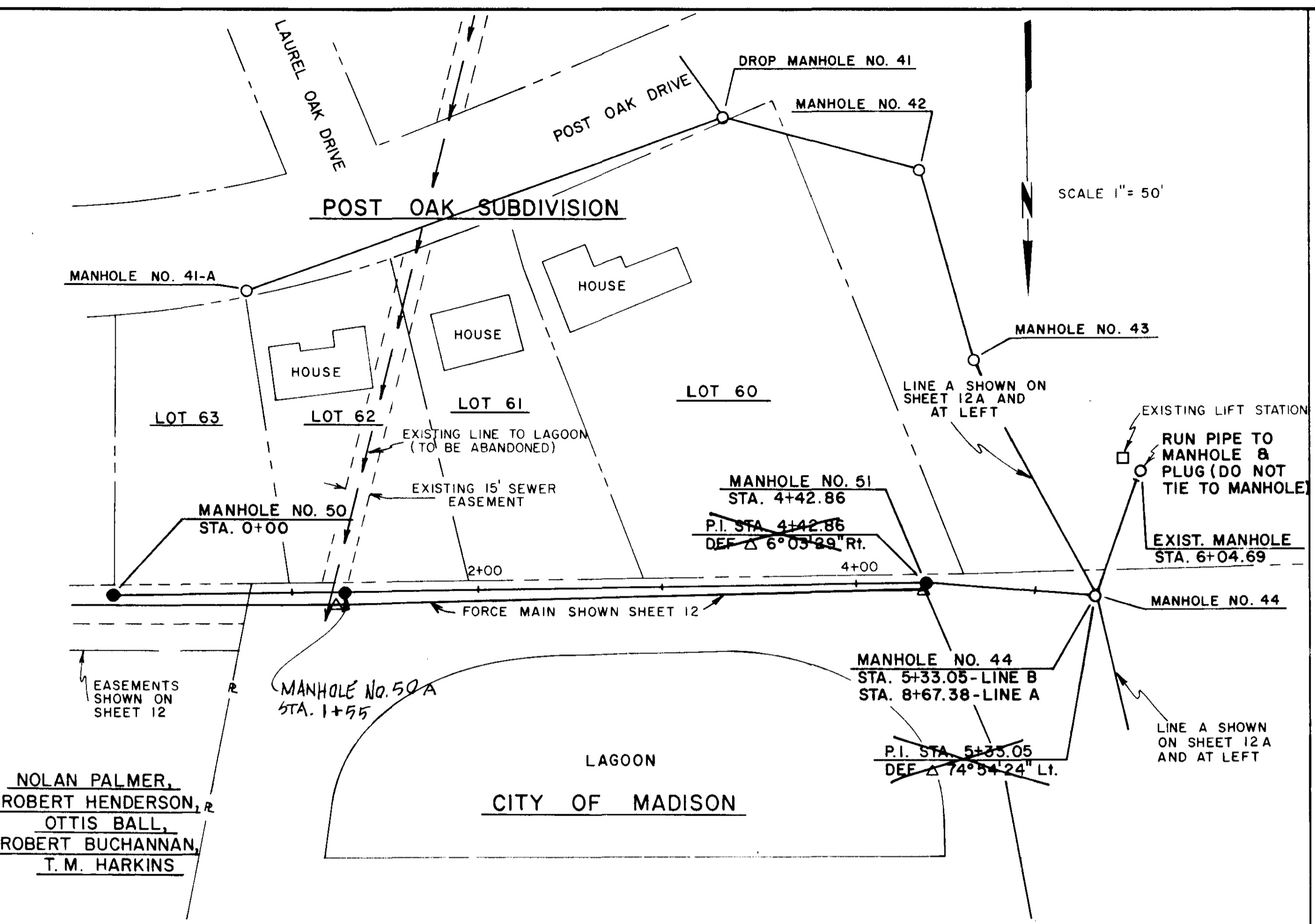
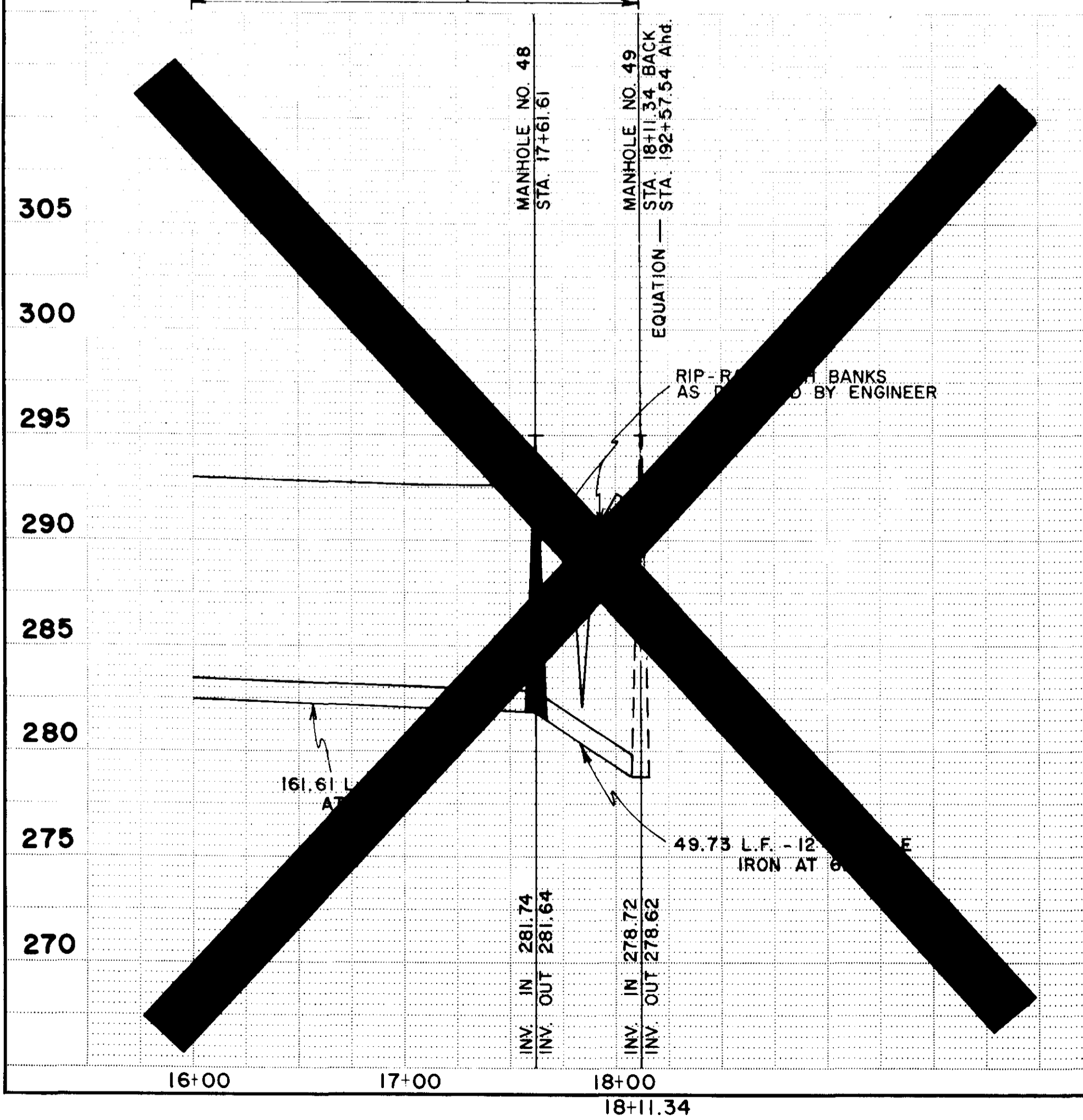
DATE	
BY	
PLAN	
NO.	
DATE	
BY	
PROF.	
NO.	



LINE A

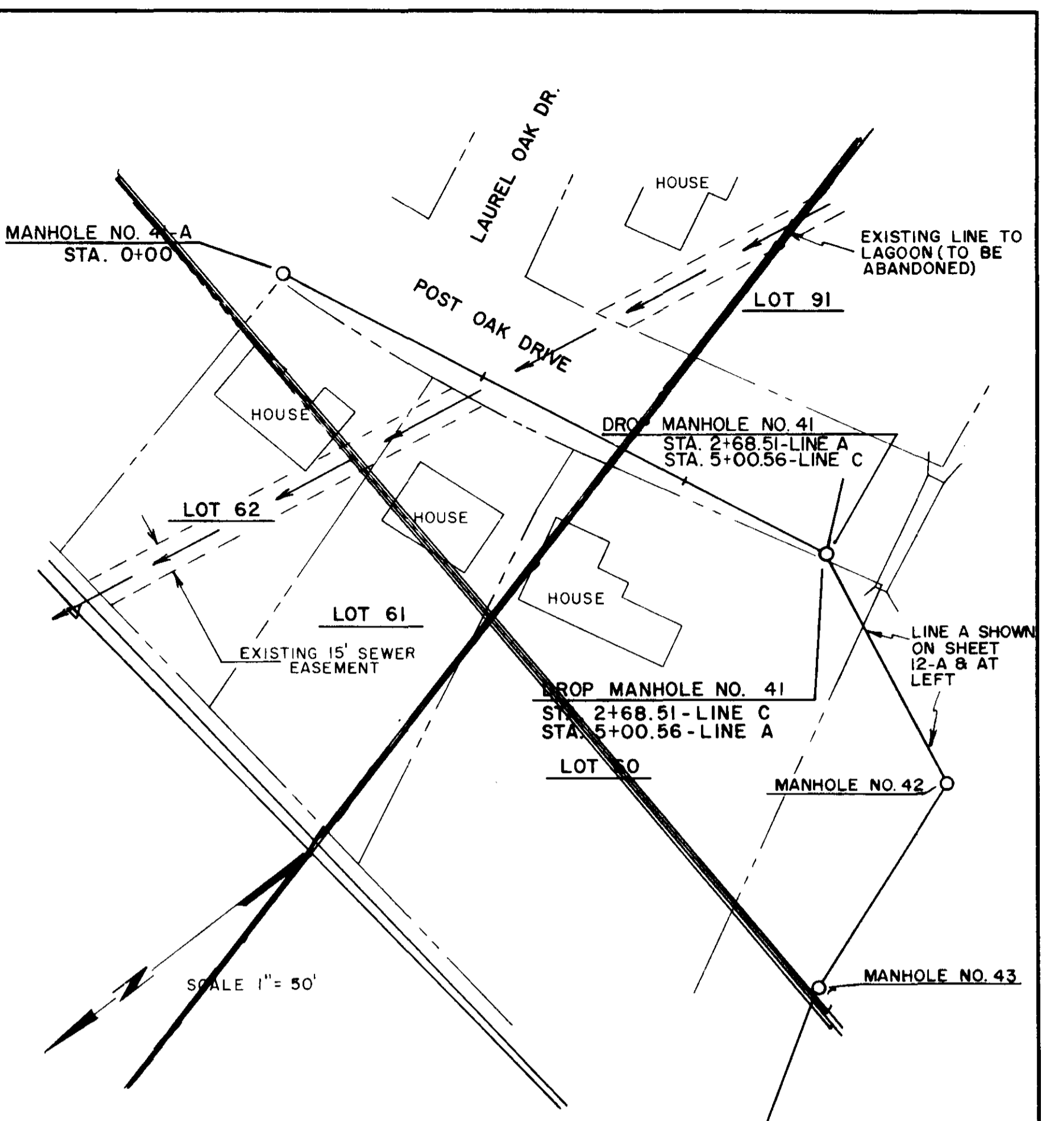
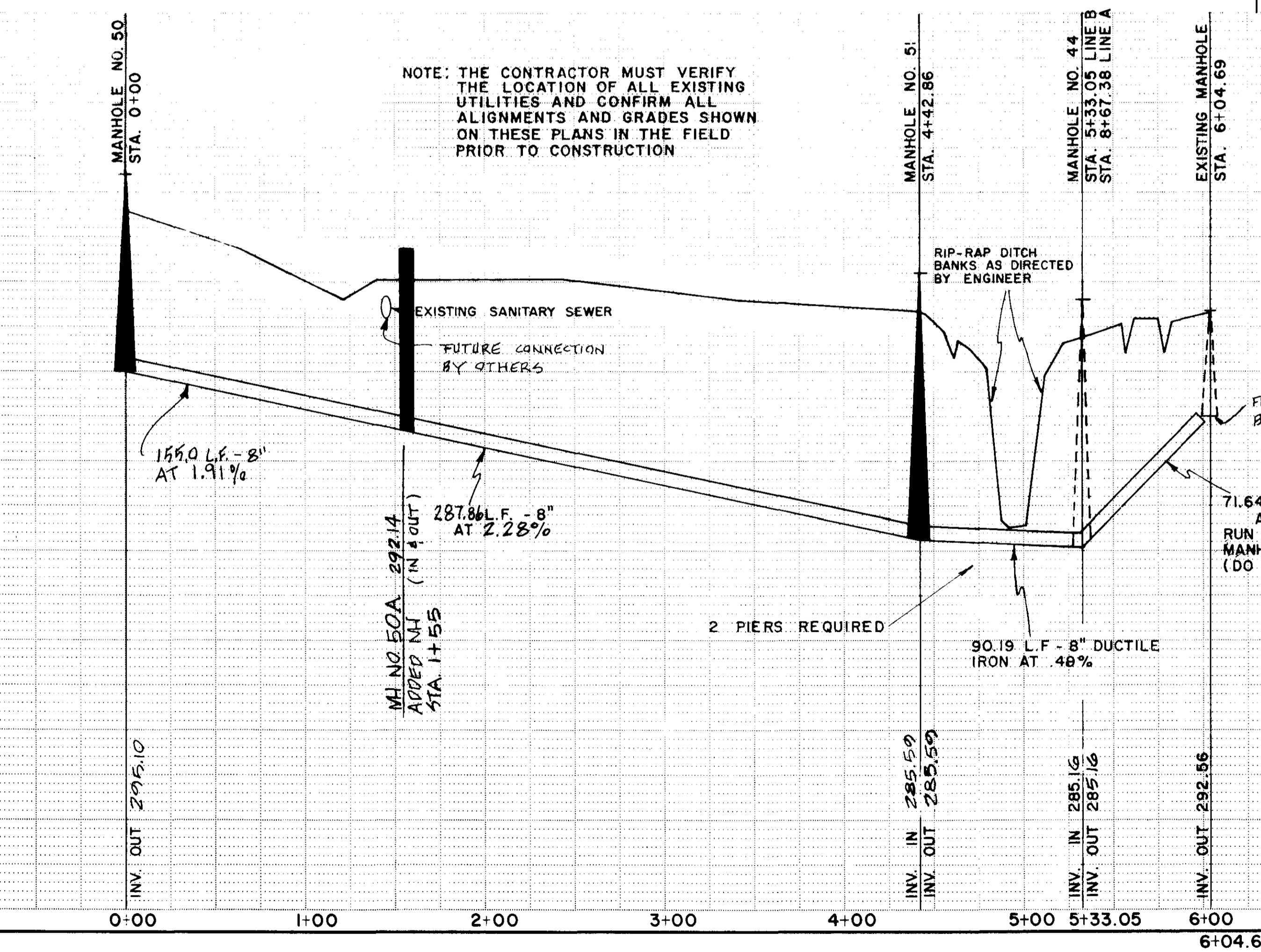
EPA INELIGIBLE

DATE	
BY	
PROF.	
NO.	

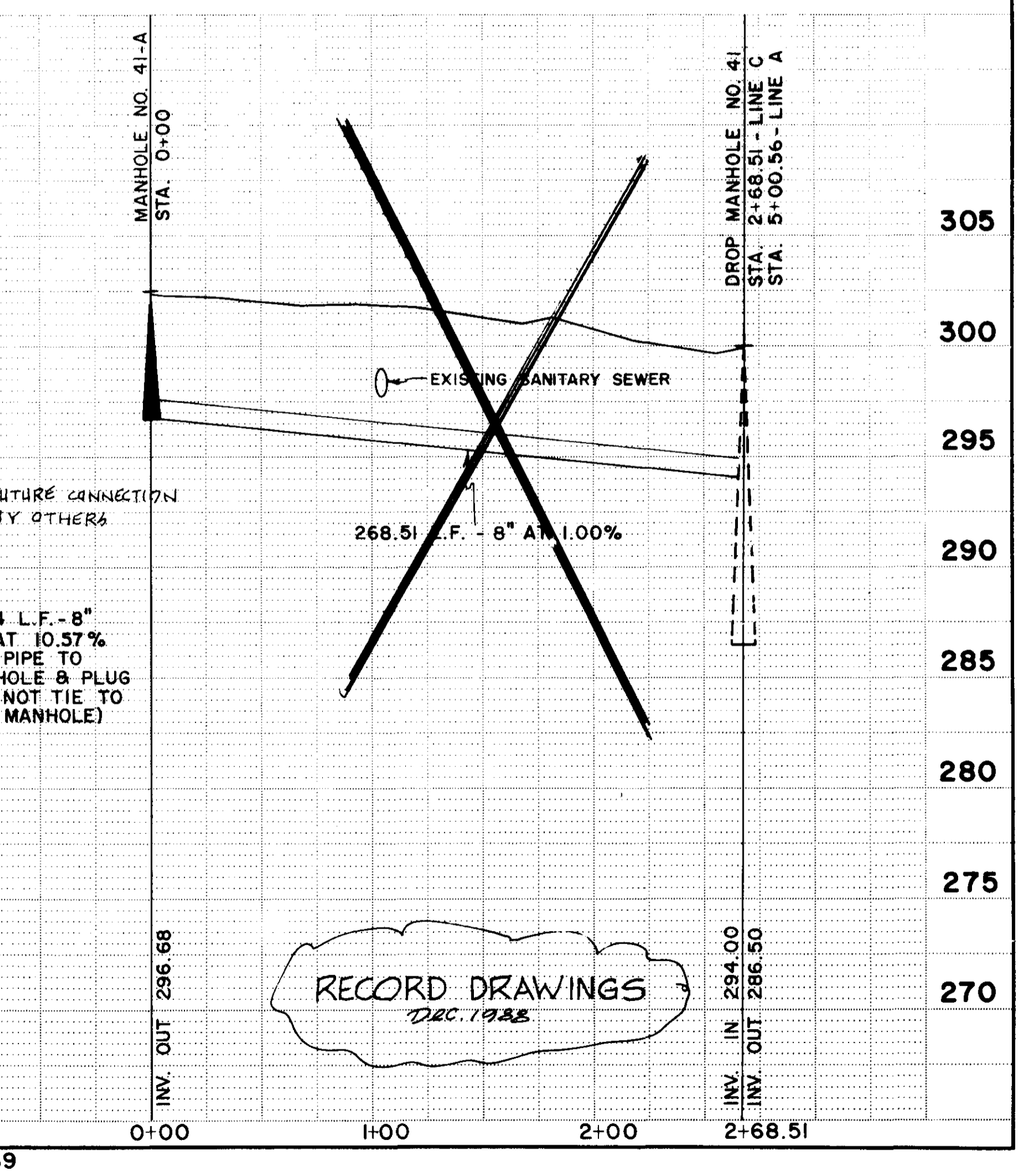


LINE B

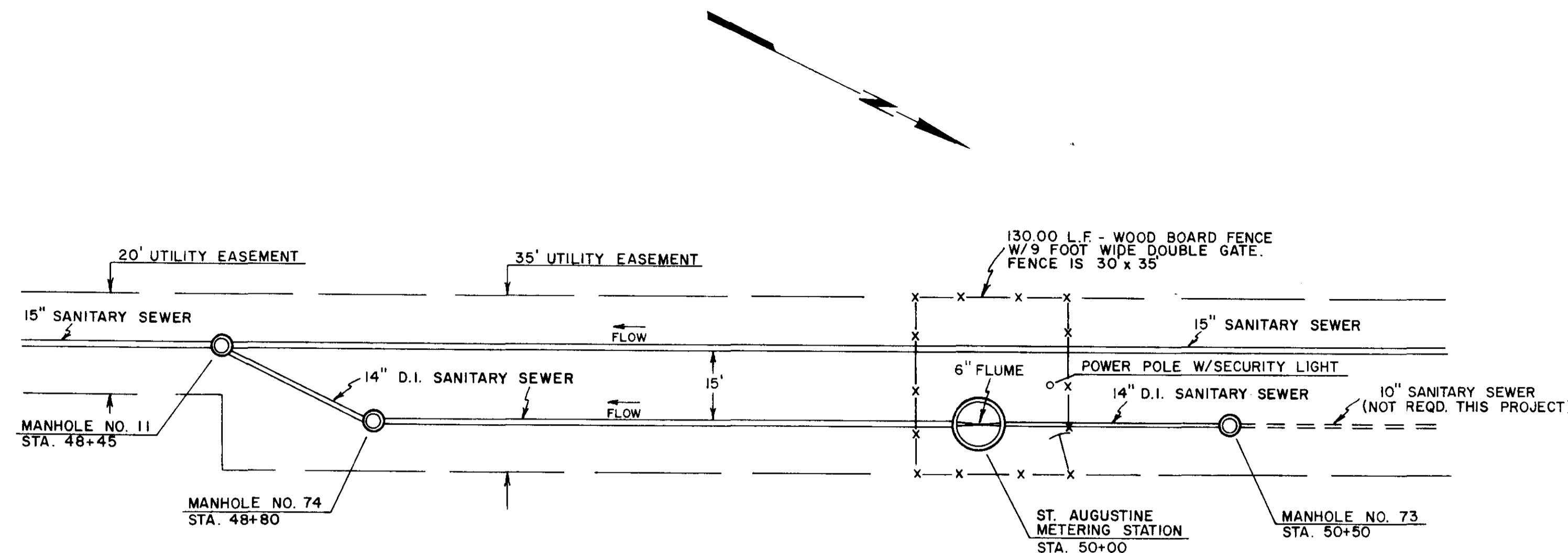
NOTE: THE CONTRACTOR MUST VERIFY THE LOCATION OF ALL EXISTING UTILITIES AND CONFIRM ALL ALIGNMENTS AND GRADES SHOWN ON THESE PLANS IN THE FIELD PRIOR TO CONSTRUCTION



LINE C

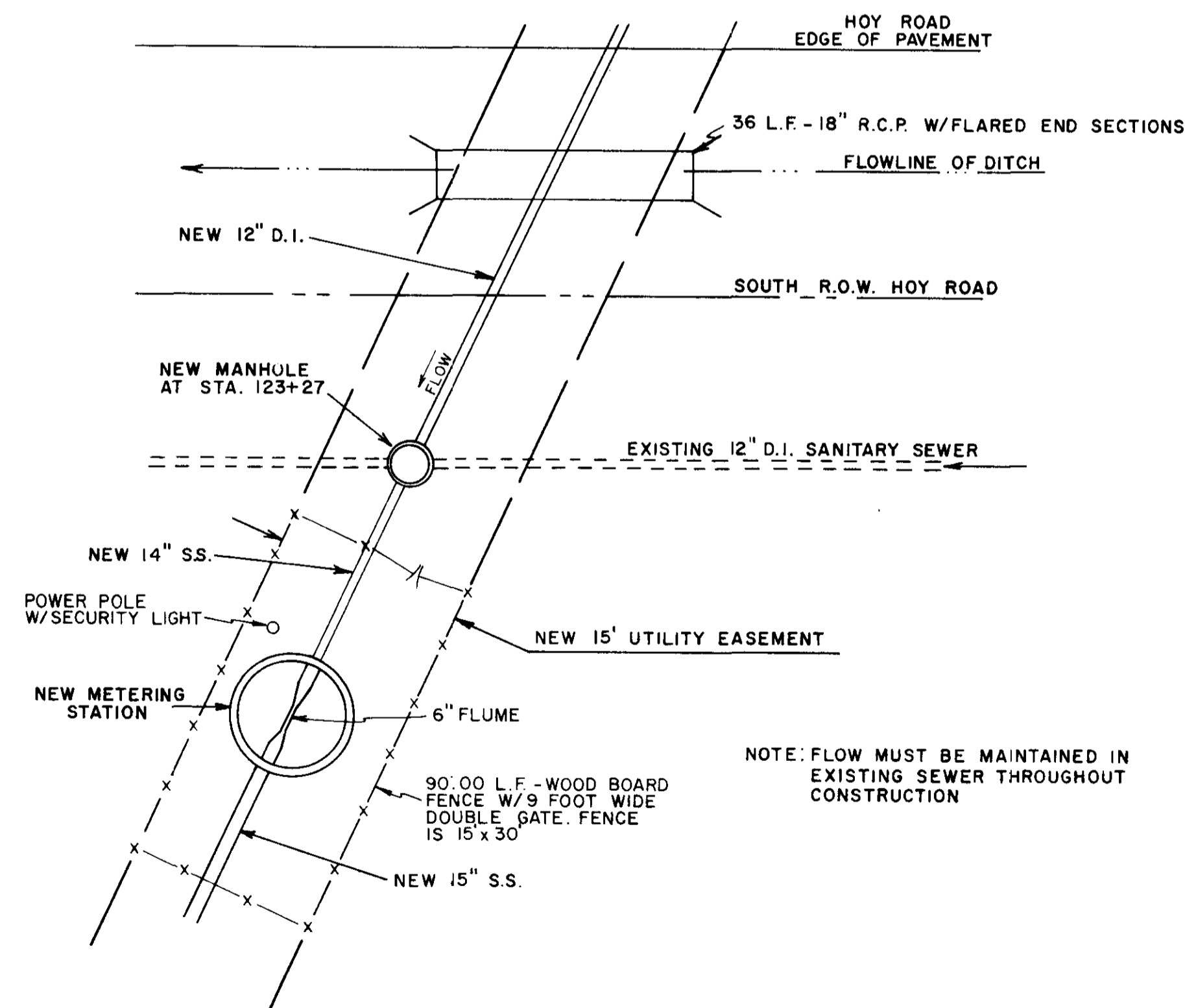


RECORD DRAWINGS
DEC. 1988



ST. AUGUSTINE ROAD METERING STATION

(SEE PLAN - PROFILE SHEET NO. 4)



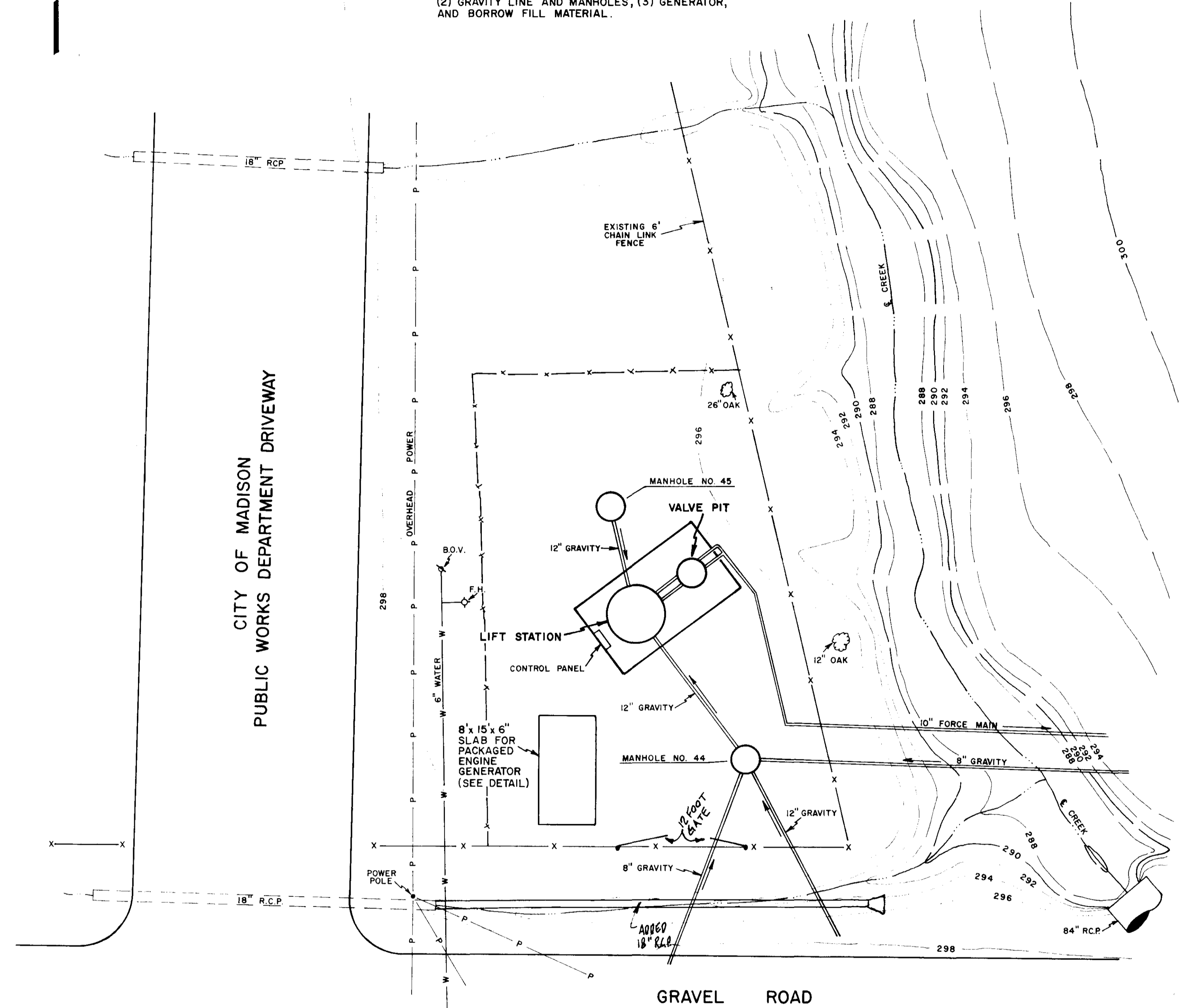
HOY ROAD METERING STATION SITE PLAN

(SEE PLAN - PROFILE SHEET NO. 8)

NOTE: FLOW MUST BE MAINTAINED IN EXISTING SEWER THROUGHOUT CONSTRUCTION

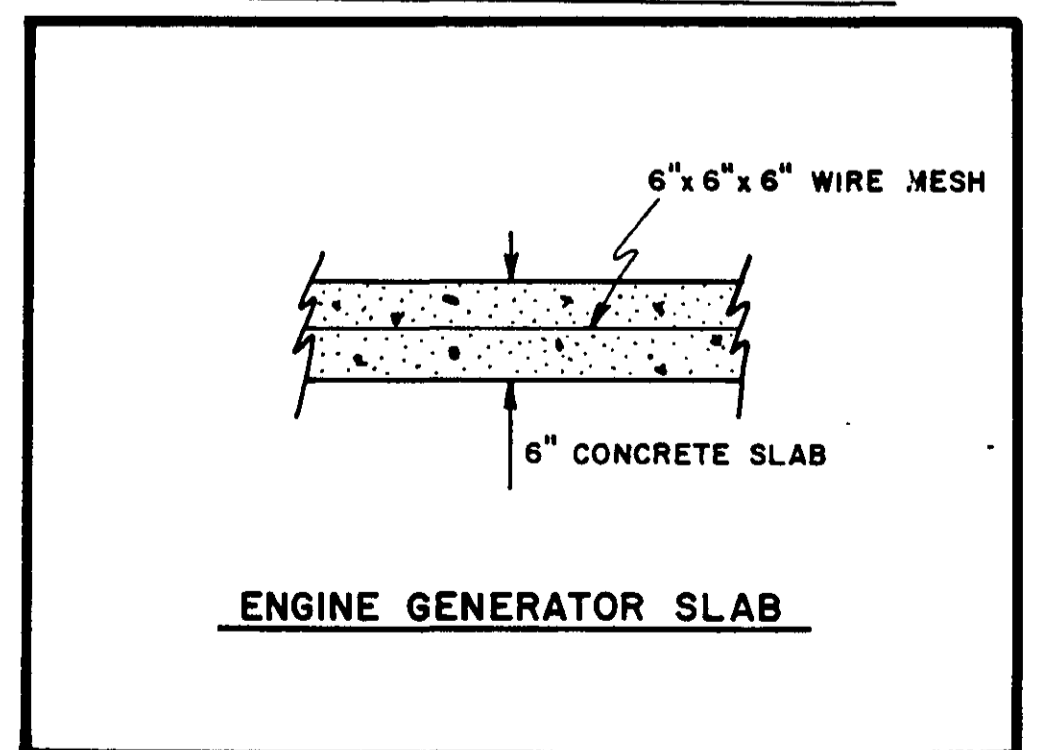
SCALE 1" = 10'

NOTE: LIFT STATION LUMP SUM PAYMENT SHALL INCLUDE COMPENSATION FOR ALL ITEMS WITHIN THE LIFT STATION SITE EXCEPT SEPARATE PAYMENT SHALL BE MADE FOR (1) FORCE MAIN FROM VALVE PIT, (2) GRAVITY LINE AND MANHOLES, (3) GENERATOR, AND BORROW FILL MATERIAL.



LIFT STATION SITE PLAN

(SEE PLAN-PROFILE SHEETS NO. 12 & 12A)



ENGINE GENERATOR SLAB

DESIGNED	DATE	
S.F.A.	7/86	
DRAWN	SCALE	
T.A.H.	AS SHOWN	

CULLEY - BRASHEAR INTERCEPTOR - CONTRACT 3
ALFORD ENGINEERING CONSULTING ENGINEERS
JACKSON, MISSISSIPPI

LIFT STATION & METERING STATIONS SITE PLAN

PROJECT NO.	
FILE NO.	SHEET NO.
M	13