

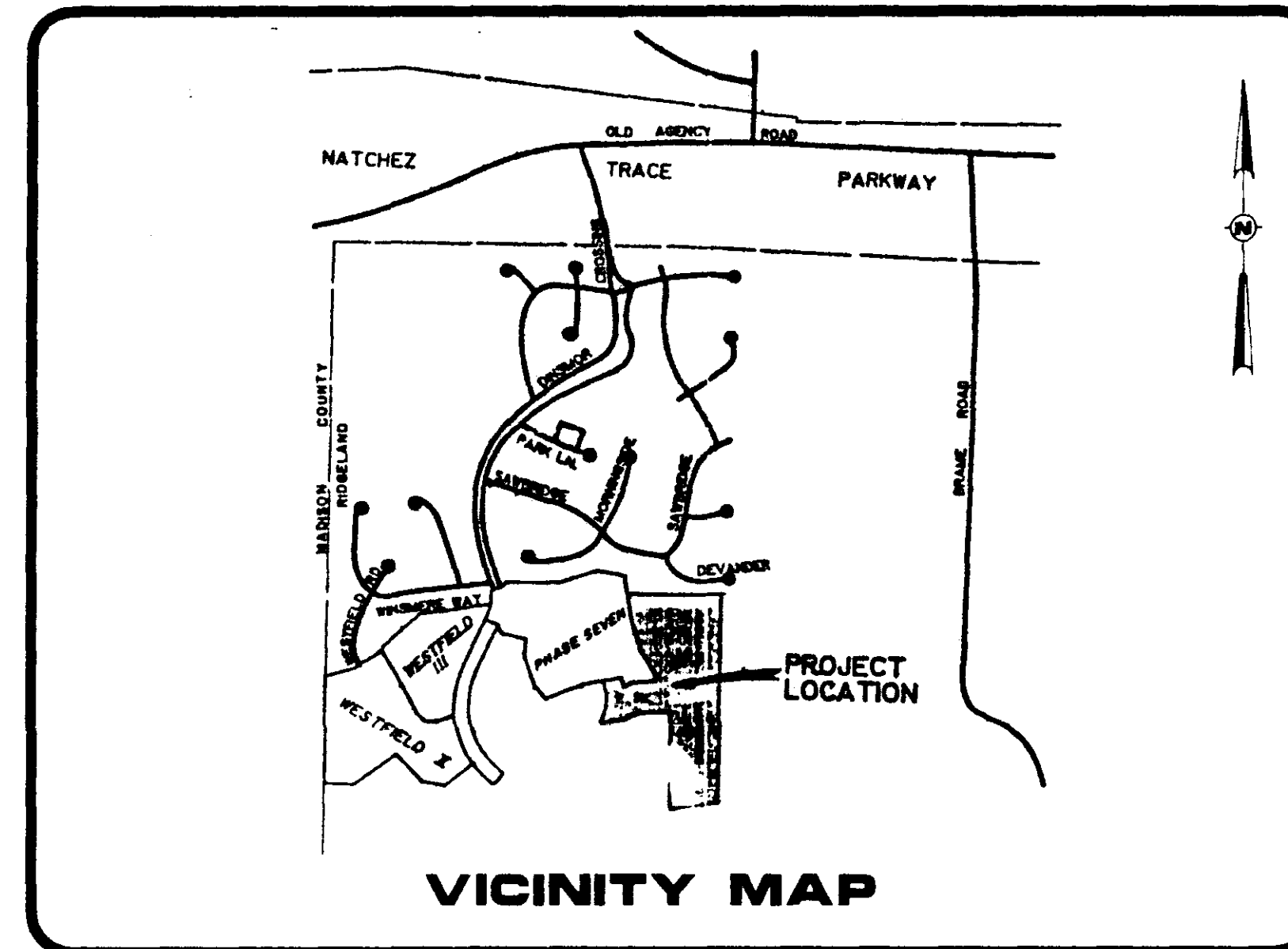
CONSTRUCTION PLANS

FOR

BELLEWETHER PART 2

(PHASE TEN OF DINSMOR)

DEVELOPED BY:
S.M.C.D.C., INC. GENERAL PARTNERSHIP
 805 SOUTH WHEATLEY STREET
 RIDGELAND, MISSISSIPPI



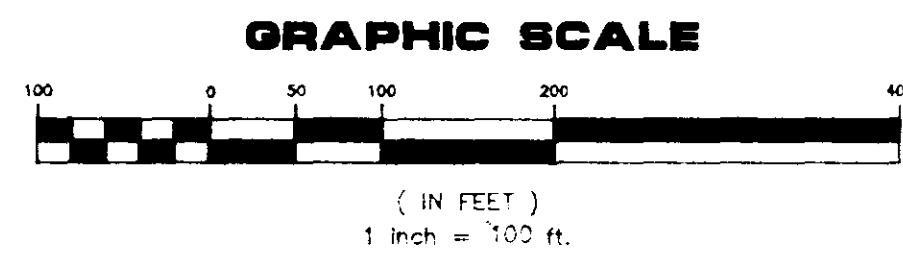
PREPARED BY:
REYNOLDS ENGINEERING, INC.
 POST OFFICE BOX 526
 JACKSON, MISSISSIPPI 39205
 (601) 362-4885

Free Dept
 Review

DRAWING INDEX	
1 - COVER SHEET 2 - GEOMETRIC LAYOUT 3 - SEWER AND WATER LAYOUT 4 - DRAINAGE AND GRADING LAYOUT 5 - PLAN & PROFILE - STREET "B" 6 - PLAN & PROFILE - STREET "C" 7 - PLAN & PROFILE - STREET "A" (12+70 - 15+71)	8 - PLAN & PROFILE - DRAINAGE IMPROVEMENTS 9 - STANDARD SANITARY SEWER DETAILS 10 - STANDARD WATER DETAILS 11 - STANDARD STORM SEWER DETAILS 12 - STANDARD HEADWALL DETAILS



PWP-00402



Ⓢ CURVE DATA

Ⓐ Δ = 07°21'57"	Ⓑ Δ = 07°21'57"	Ⓒ Δ = 08°29'50"	Ⓓ Δ = 21°00'24"	Ⓔ Δ = 26°47'00"	Ⓕ Δ = 34°17'41"
R = 776.79'	R = 776.79'	R = 673.05'	R = 539.38'	R = 420.03'	R = 372.72'
D = 7.3761"	D = 7.3761"	D = 8.5128"	D = 10.6225"	D = 13.6411"	D = 15.3725"
T = 50.00'	T = 50.00'	T = 50.00'	T = 100.00'	T = 100.00'	T = 115.00'
L = 99.86'	L = 99.86'	L = 99.82'	L = 197.75'	L = 196.34'	L = 223.09'

GEOMETRIC LAYOUT

FOR

BELLEWETHER PART 2

(PHASE TEN OF DINSMOR)

(PARCEL CONTAINS 17.1927 ACRES OF LAND, MORE OR LESS)

DRAWING NO.

FIELD

REYNOLDS ENGINEERING, INC.

POST OFFICE BOX 526

JACKSON, MISSISSIPPI 39205

601-362-4885

DATUM

DEVELOPER:

S.M.C.D.C., INC.
GENERAL PARTNERSHIP
805 SOUTH WHEATLEY STREET
RIDGELAND, MISSISSIPPI

LOCATION:

SITUATED IN THE
EAST 1/2 OF SECTION 26
TOWNSHIP 7 NORTH - RANGE 1 EAST
MADISON COUNTY, MISSISSIPPI

DATE

REVISION

BY

DRAWN BY: P.H.W.

DATE: 3/16/92

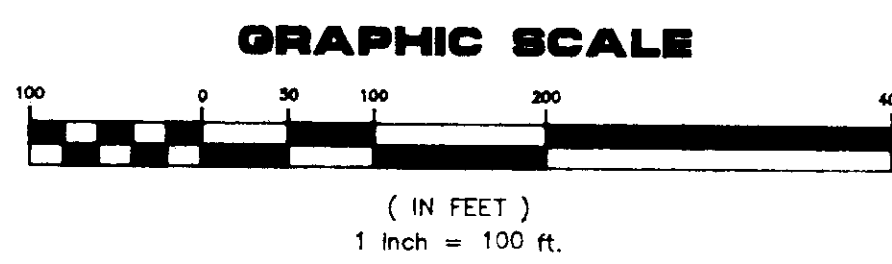
SCALE: 1"=100'

BOOK: B-167 PAGE:

PROJECT NO.: 91034

SHEET

2



⊙ CURVE DATA

Ⓐ Δ = 07°21'57"	Ⓑ Δ = 07°21'57"	Ⓒ Δ = 08°29'50"	Ⓓ Δ = 21°00'24"	Ⓔ Δ = 26°47'00"	Ⓕ Δ = 34°17'41"
R = 776.73'	R = 776.73'	R = 673.05'	R = 539.36'	R = 420.03'	R = 372.72'
D = 7.3761'	D = 7.3761'	D = 8.5128'	D = 10.6225'	D = 13.6411'	D = 15.3725'
T = 50.00'	T = 50.00'	T = 50.00'	T = 100.00'	T = 100.00'	T = 115.00'
L = 99.86'	L = 99.86'	L = 99.82'	L = 197.75'	L = 196.34'	L = 223.09'

SEWER AND WATER LAYOUT
FOR
BELLEWETHER PART 2
 (PHASE TEN OF DINSMOR)

(PARCEL CONTAINS 17.1927 ACRES OF LAND, MORE OR LESS)

DRAWING NO.

FIELD

REYNOLDS ENGINEERING, INC.

POST OFFICE BOX 526

JACKSON, MISSISSIPPI 39205

DEVELOPER:

S.M.C.D.C., INC.
GENERAL PARTNERSHIP
805 SOUTH WHEATLEY STREET
RIDELAND, MISSISSIPPI

LOCATION:

SITUATED IN THE
EAST 1/2 OF SECTION 26
TOWNSHIP 7 NORTH - RANGE 1 EAST
MADISON COUNTY, MISSISSIPPI

DATE

REVISION

BY

DRAWN BY: P.H.W.

DATE: 1/29/92

SCALE: 1"=100'

BOOK: B-167 PAGE:

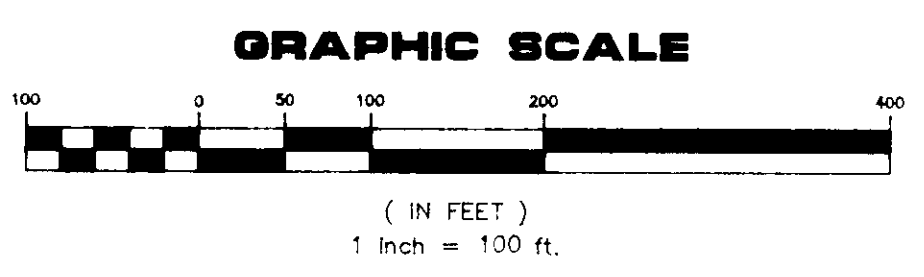
PROJECT NO.: 91034

SHEET

3

DATUM

601-362-4885

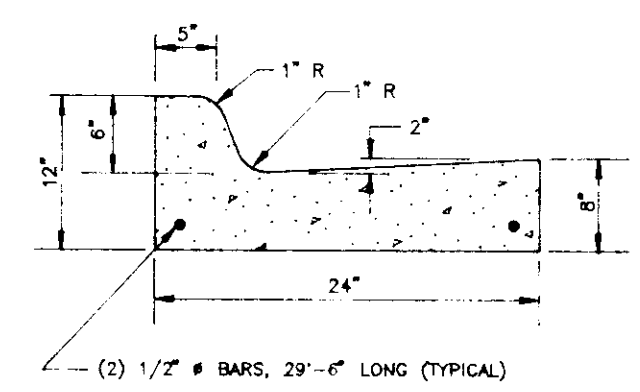
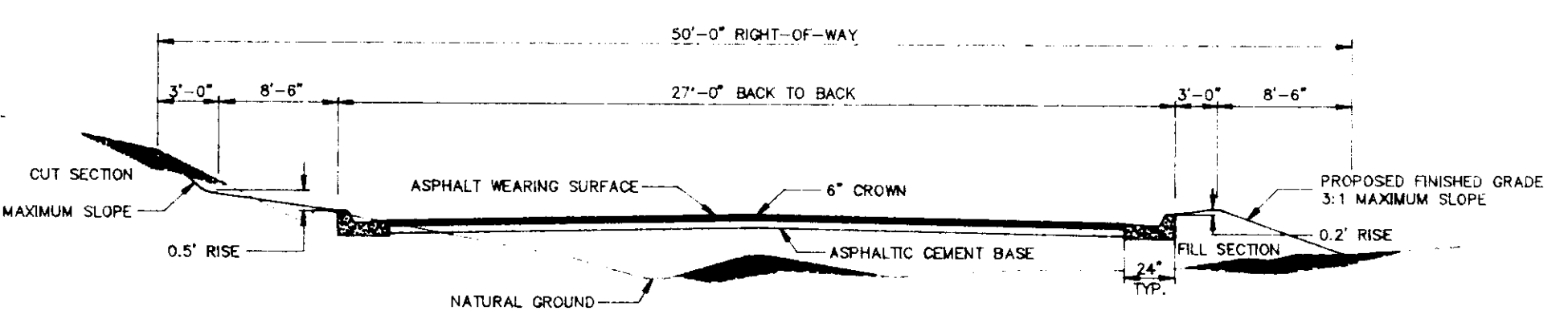
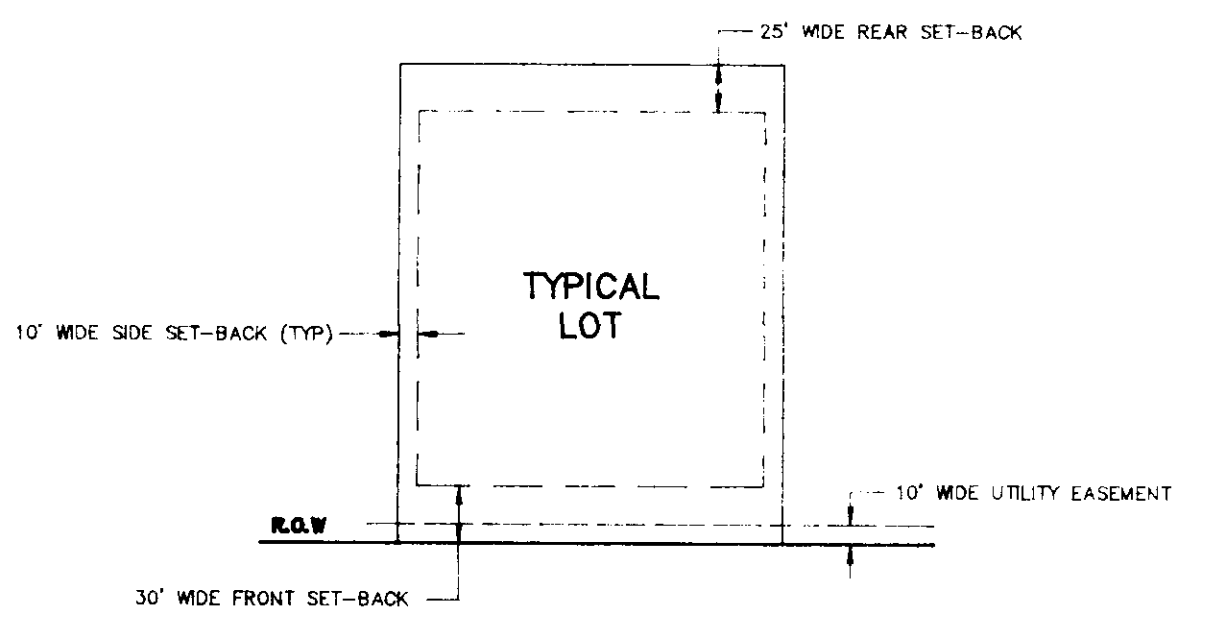


⊙ CURVE DATA

Ⓐ Δ = 07°21'57"	Ⓑ Δ = 07°21'57"	Ⓒ Δ = 08°29'50"
R = 776.79'	R = 776.79'	R = 673.05'
D = 7.3761'	D = 7.3761'	D = 8.5128'
T = 50.00'	T = 50.00'	T = 50.00'
L = 99.86'	L = 99.86'	L = 99.82'
Ⓓ Δ = 21°00'24"	Ⓔ Δ = 26°47'00"	Ⓕ Δ = 34°17'41"
R = 539.38'	R = 420.03'	R = 372.72'
D = 10.6225'	D = 13.8411'	D = 15.3725'
T = 100.00'	T = 100.00'	T = 115.00'
L = 197.75'	L = 196.34'	L = 223.09'

SUMMARY OF LOT AREAS

LOT 265 - 16,975.69 SQ. FT.	LOT 281 - 18,718.10 SQ. FT.
LOT 266 - 16,957.19 SQ. FT.	LOT 282 - 16,822.71 SQ. FT.
LOT 267 - 18,043.89 SQ. FT.	LOT 283 - 19,356.11 SQ. FT.
LOT 268 - 19,720.40 SQ. FT.	LOT 284 - 17,397.24 SQ. FT.
LOT 269 - 16,799.74 SQ. FT.	LOT 285 - 20,539.41 SQ. FT.
LOT 270 - 14,048.32 SQ. FT.	LOT 286 - 18,336.11 SQ. FT.
LOT 271 - 14,949.86 SQ. FT.	LOT 287 - 16,212.17 SQ. FT.
LOT 272 - 70,263.72 SQ. FT.	LOT 288 - 16,212.17 SQ. FT.
LOT 273 - 27,529.59 SQ. FT.	LOT 289 - 17,806.17 SQ. FT.
LOT 274 - 13,553.98 SQ. FT.	LOT 290 - 26,777.09 SQ. FT.
LOT 275 - 13,210.29 SQ. FT.	LOT 291 - 15,971.26 SQ. FT.
LOT 276 - 20,138.73 SQ. FT.	LOT 292 - 16,117.86 SQ. FT.
LOT 277 - 20,733.19 SQ. FT.	LOT 293 - 16,444.07 SQ. FT.
LOT 278 - 19,558.24 SQ. FT.	LOT 294 - 15,862.26 SQ. FT.
LOT 279 - 19,761.91 SQ. FT.	LOT 295 - 14,622.00 SQ. FT.
LOT 280 - 18,718.10 SQ. FT.	LOT 296 - 16,822.71 SQ. FT.

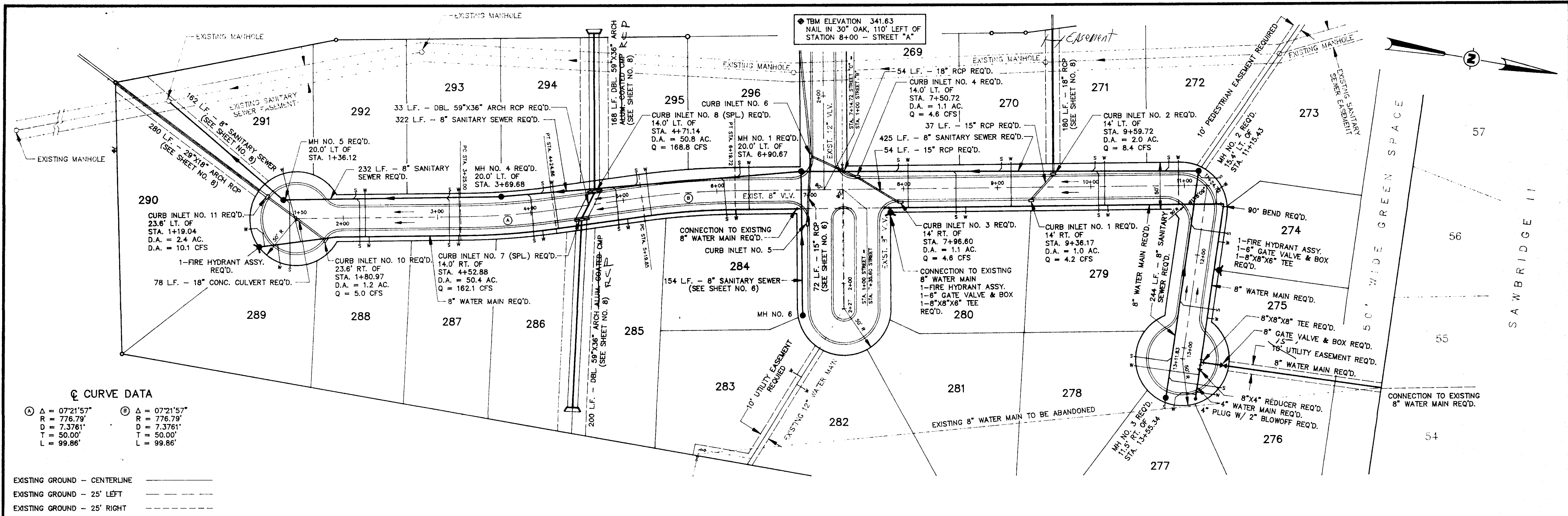


- NOTES:
- 1/2" EXPANSION JOINT REQ'D. @ 30' c.c. WITH 2-3/4" DOWEL BARS, 15" LONG, REQ'D. AT ALL EXPANSION JOINTS. THEY SHALL BE HELD IN PLACE BY APPROVED CHAIRS OR SUPPORTS, AND 1/2" EXPANSION MATERIALS, 1/4" CONTRACTION JOINT REQ'D. @ 10' c.c.
 - ALL CURB & GUTTER AND DRIVEWAYS TO BE CONSTRUCTED OF 1:2:4 MIX CONCRETE.

DRAINAGE AND GRADING LAYOUT
FOR
BELLEWETHER PART 2
(PHASE TEN OF DINSMOR)

(PARCEL CONTAINS 17.1927 ACRES OF LAND, MORE OR LESS)

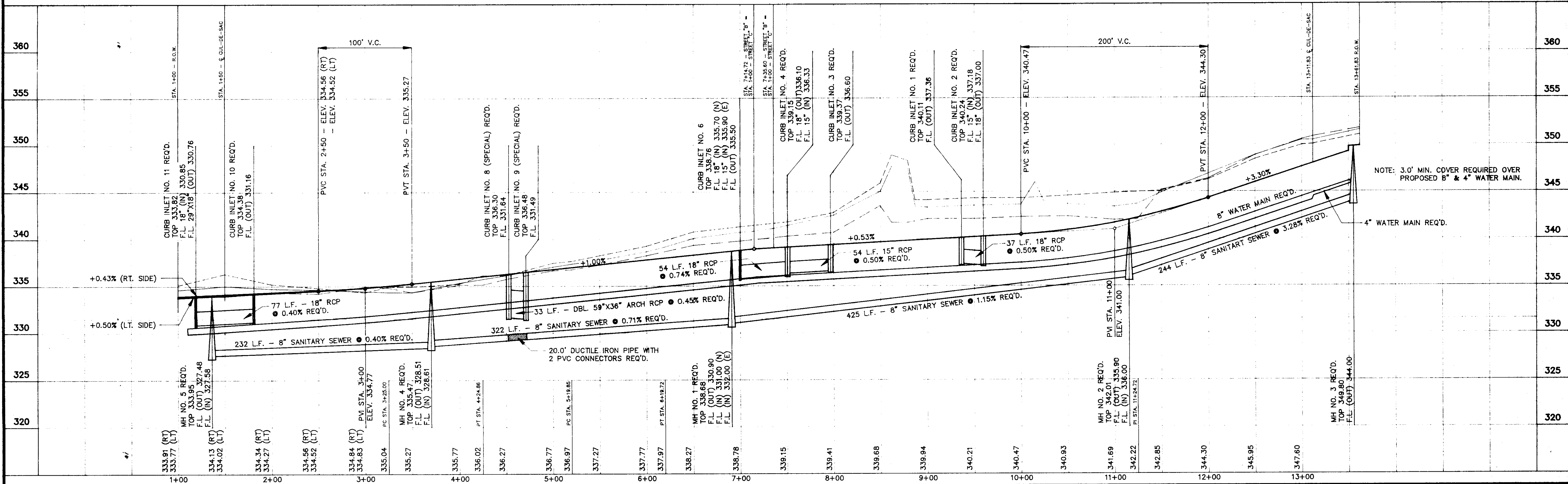
FIELD DATING NO.	REYNOLDS ENGINEERING, INC. POST OFFICE BOX 526 JACKSON, MISSISSIPPI 39205 601-362-4885	DEVELOPER: S.M.C.D.C., INC. GENERAL PARTNERSHIP 805 SOUTH WHEATLEY STREET RIDGELAND, MISSISSIPPI	LOCATION: SITUATED IN THE EAST 1/2 OF SECTION 26 TOWNSHIP 7 NORTH - RANGE 1 EAST MADISON COUNTY, MISSISSIPPI	DATE	REVISION	BY	DRAWN BY: P.H.W.	SHEET 4
							DATE: SCALE: 1"=100' BOOK: B-167 PAGE: PROJECT NO.: 91034	



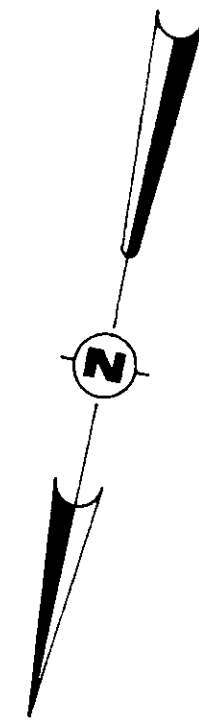
⊙ CURVE DATA

Ⓐ Δ = 07'21"57"	Ⓑ Δ = 07'21"57"
R = 776.79'	R = 776.79'
D = 7.3761'	D = 7.3761'
T = 50.00'	T = 50.00'
L = 99.86'	L = 99.86'

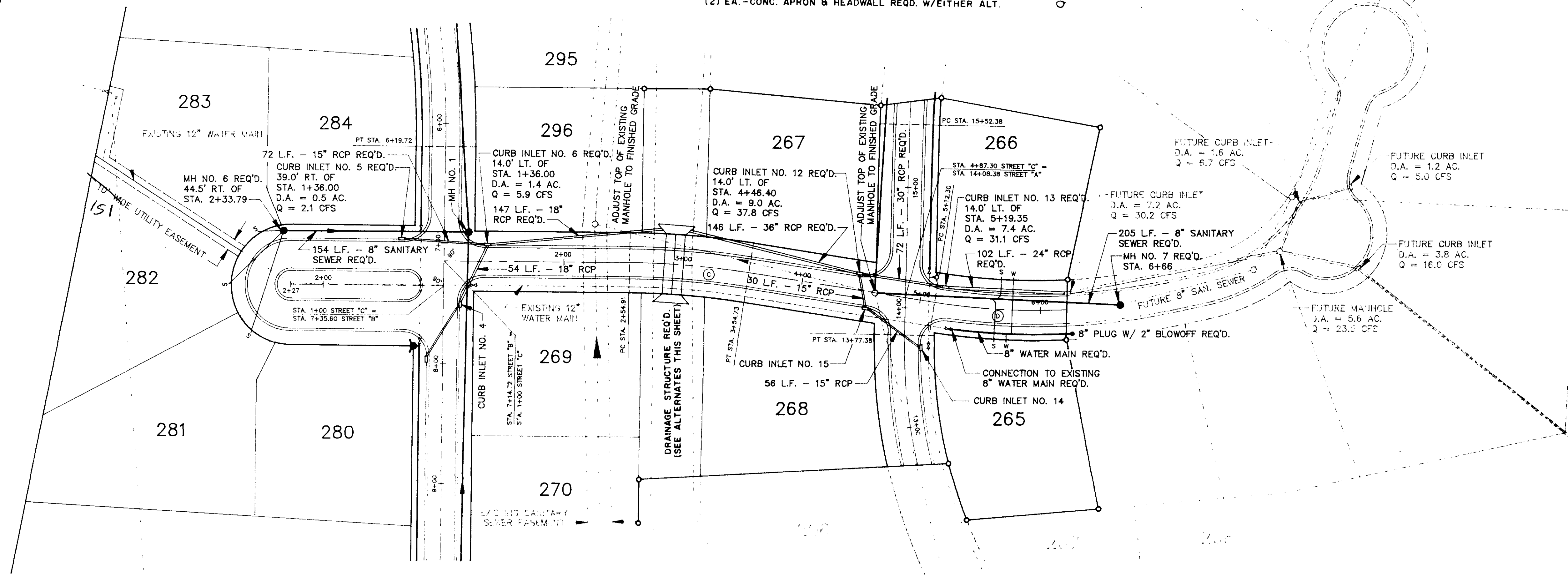
EXISTING GROUND - CENTERLINE _____
 EXISTING GROUND - 25' LEFT _____
 EXISTING GROUND - 25' RIGHT _____



FIELD	PROJECT	LOCATION	DATE	REVISION	BY	DRAWN BY: P.H.W.	SHEET
DATUM	REYNOLDS ENGINEERING, INC. POST OFFICE BOX 526 JACKSON, MISSISSIPPI 39205 601-362-4885	BELLEWETHER PART 2 (PHASE TEN OF DUNSMOR)				DATE: 3/18/91 HORIZ. SCALE: 1"=50' BOOK: 663 PAGE: 71-77 PROJECT NO.: 91034	5



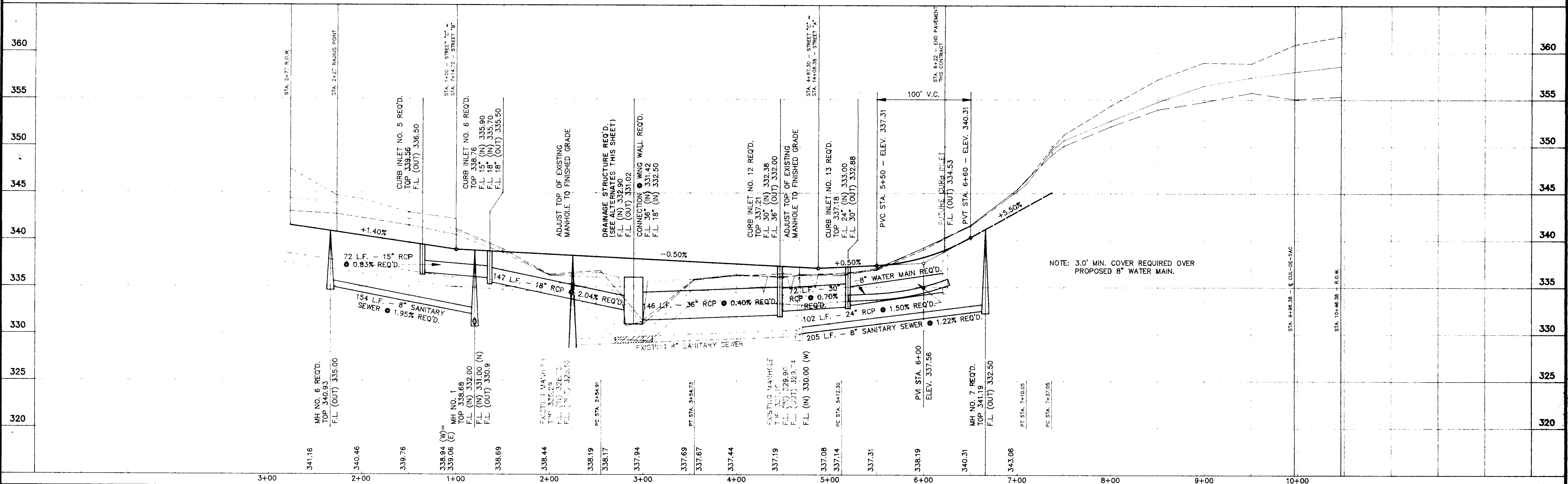
DRAINAGE STRUCTURE
 ALT. NO. 1 - DBL. 8' X 5' CONC. BOX CULVERT
 ALT. NO. 2 - DBL. LINE MULTI PLATE ARCH CULVERT (ALUM. COATING)
 (2) EA. - CONC. APRON & HEADWALL REQ'D. W/EITHER ALT.



⊙ CURVE DATA

⊙ Δ = 08°29'50"	⊙ Δ = 21°00'24"
R = 673.05'	R = 538.38'
D = 8.5128'	D = 10.6225'
T = 50.00'	T = 100.00'
L = 99.82'	L = 197.75'

EXISTING GROUND - CENTERLINE _____
 EXISTING GROUND - 25' LEFT - - - - -
 EXISTING GROUND - 25' RIGHT - - - - -



NOTE: 3.0' MIN. COVER REQUIRED OVER PROPOSED 8" WATER MAIN.

DRAWING NO.

FIELD 360 355 350 345 340 335 330 325 320

REYNOLDS ENGINEERING, INC.
 POST OFFICE BOX 526 JACKSON, MISSISSIPPI 39205

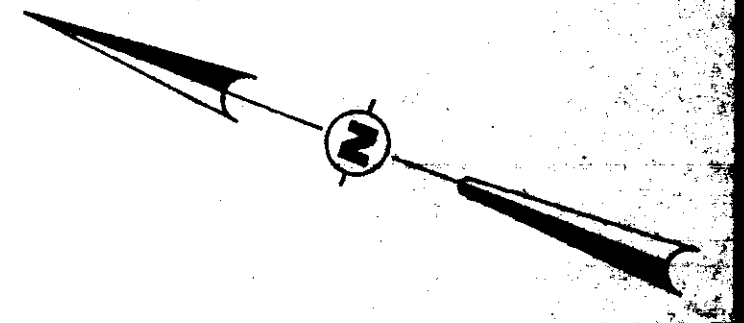
PROJECT **BELLEWETHER PART 2**
 (PHASE TEN OF DINSBOR)

LOCATION

DATE	REVISION	BY	DRAWN BY: P.H.W.	SHEET
			DATE: 3/16/92	
			HORIZ. SCALE: 1"=50'	
			BOOK: 167 PAGE:	
			PROJECT NO.: 91034	

DATUM

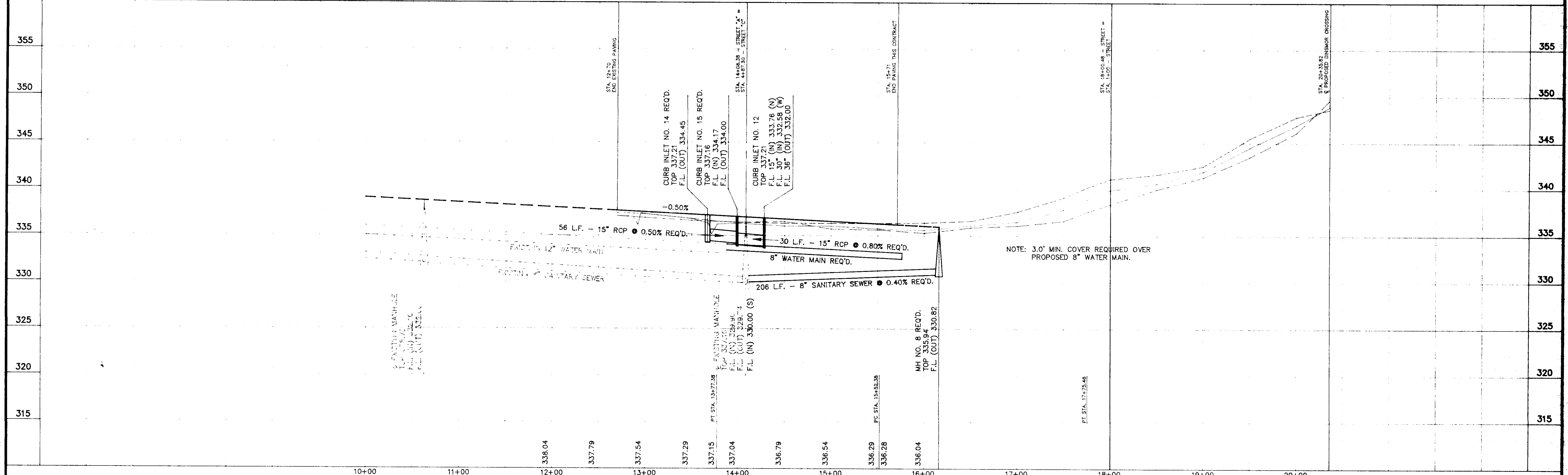
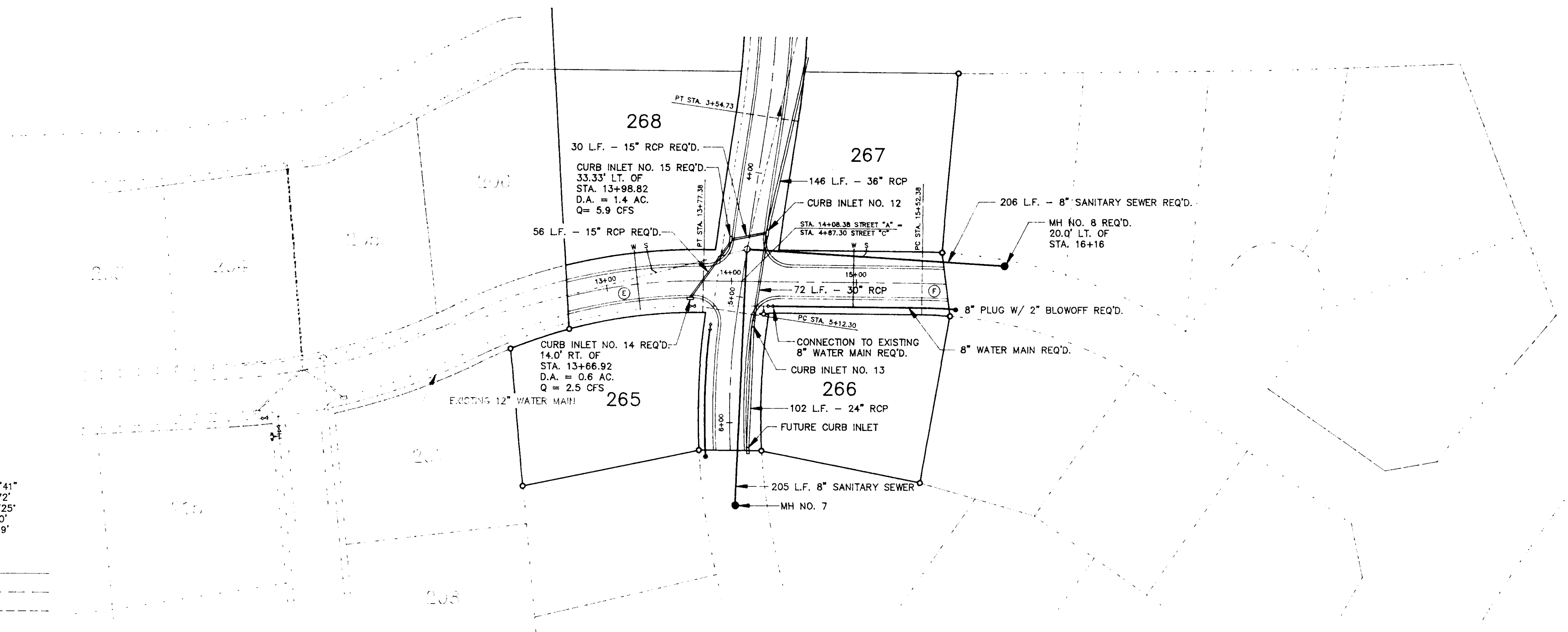
601-362-4885



⊙ CURVE DATA

⊙ Δ = 26°47'00" R = 420.03' D = 13.6411' T = 100.00' L = 196.34'
 ⊙ Δ = 34°17'41" R = 372.72' D = 15.3725' T = 115.00' L = 223.09'

EXISTING GROUND - CENTERLINE _____
 EXISTING GROUND - 25' LEFT _____
 EXISTING GROUND - 25' RIGHT _____



NOTE: 3.0' MIN. COVER REQUIRED OVER PROPOSED 8" WATER MAIN.

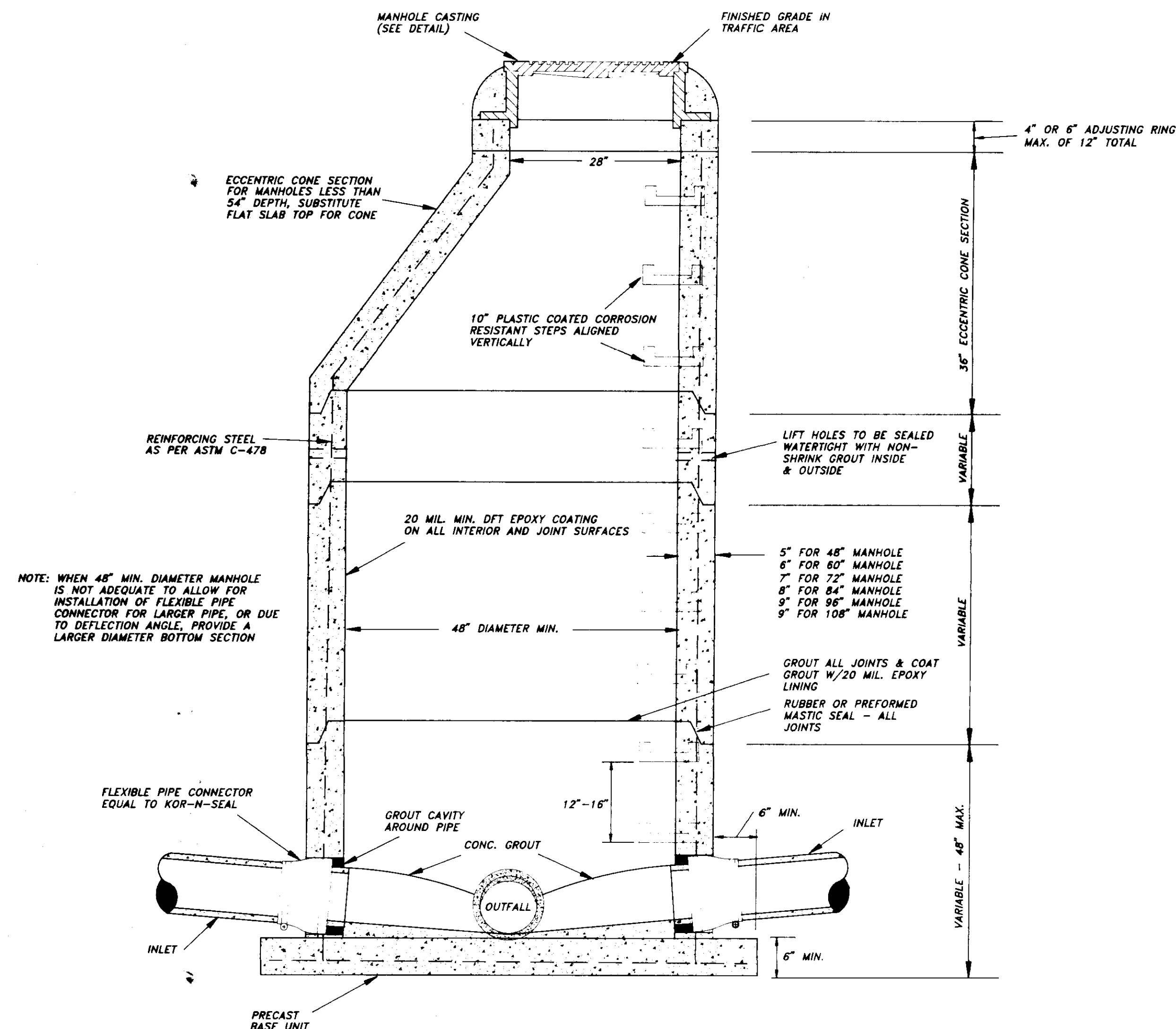
DRAWING NO.

FIELD _____ DATE _____ REVISION _____ BY _____ SHEET _____
 DATUM _____ PROJECT _____ LOCATION _____

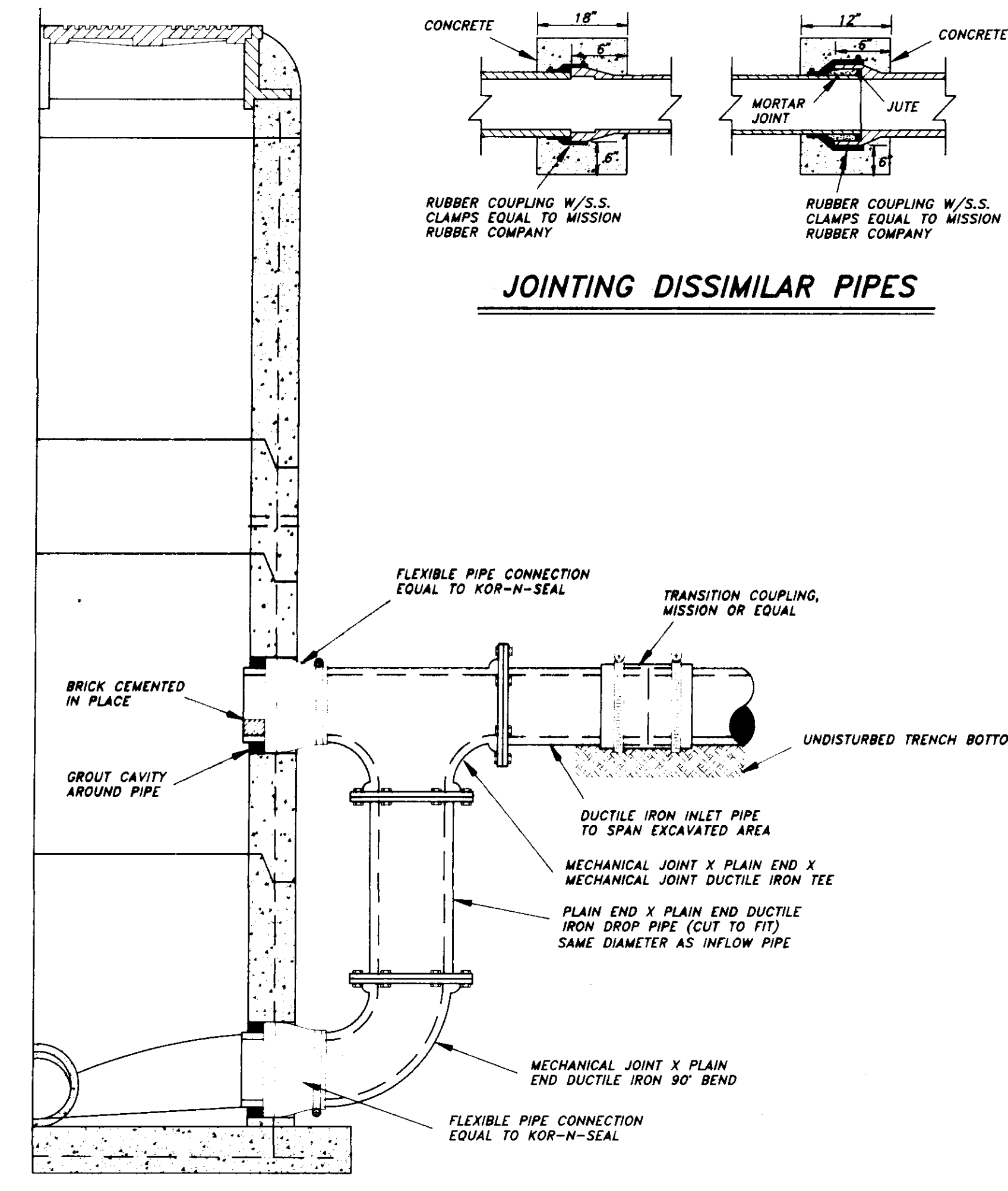
REYNOLDS ENGINEERING, INC.
 POST OFFICE BOX 526 JACKSON, MISSISSIPPI 39205
 601-362-4885

BELLEWETHER PART 2
 (PHASE TEN OF DINSBOR)

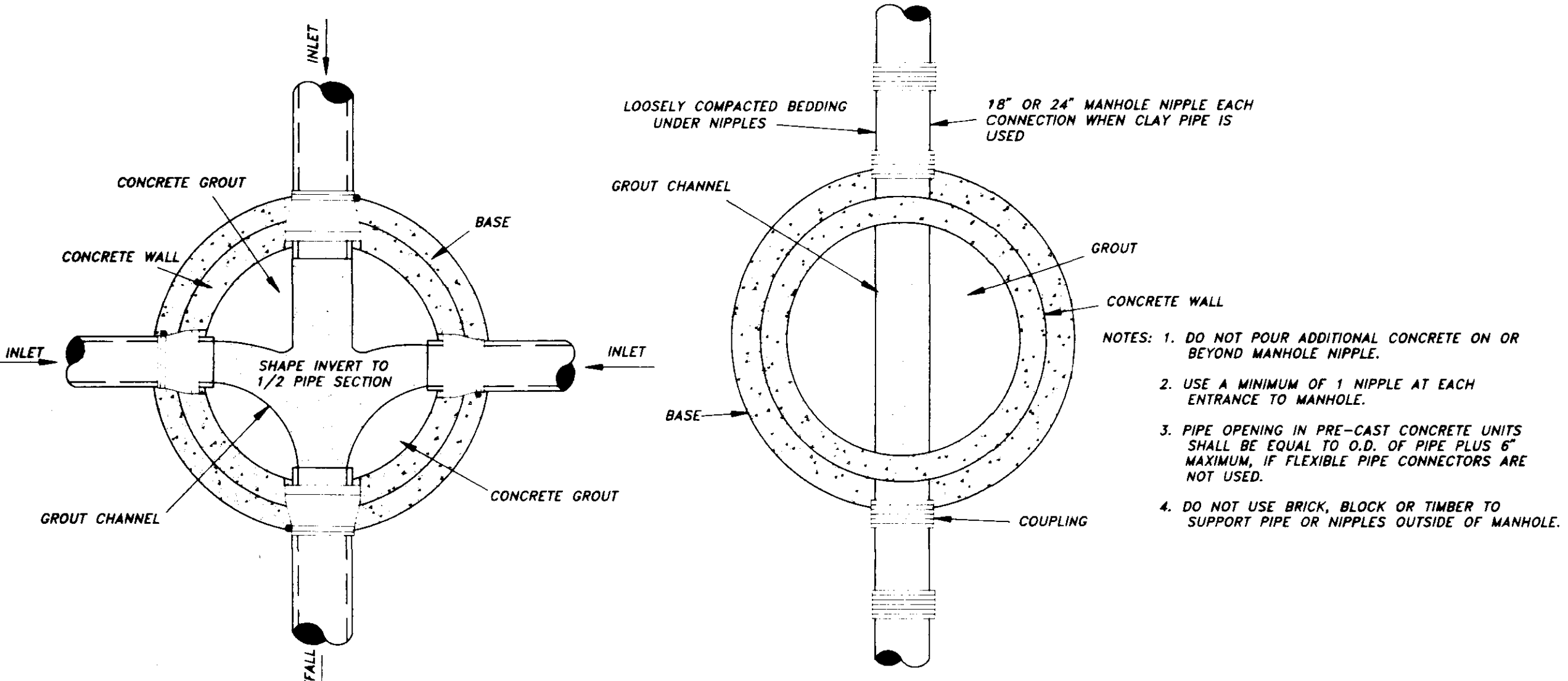
DRAWN BY: P.H.W.
 DATE: 3/16/92
 HORIZ. SCALE: 1"=50'
 BOOK: 167 PAGE:
 PROJECT NO.: 91034



SECTION PRECAST CONCRETE MANHOLE

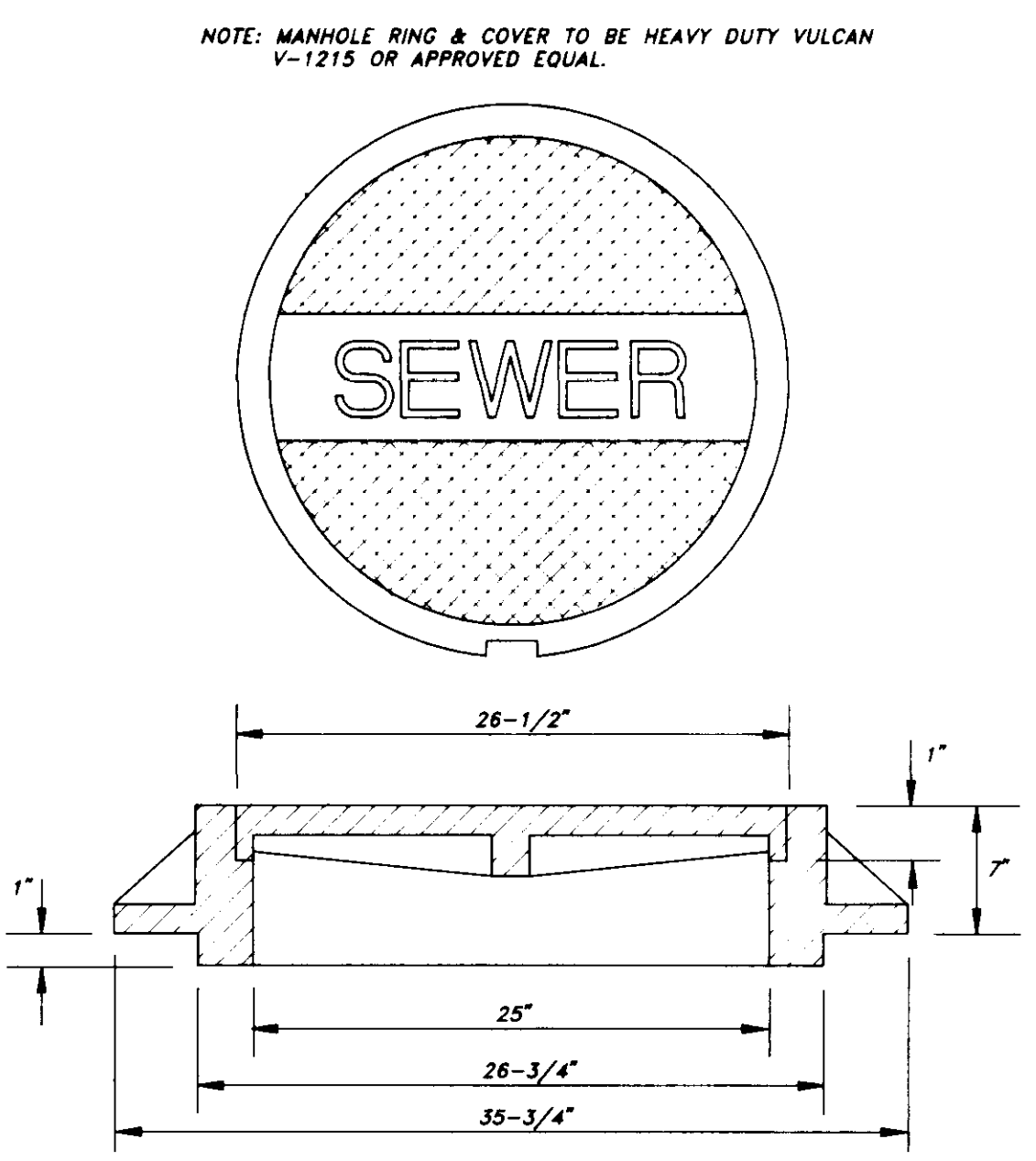


SECTION PRECAST CONCRETE MANHOLE WITH DROP CONNECTION

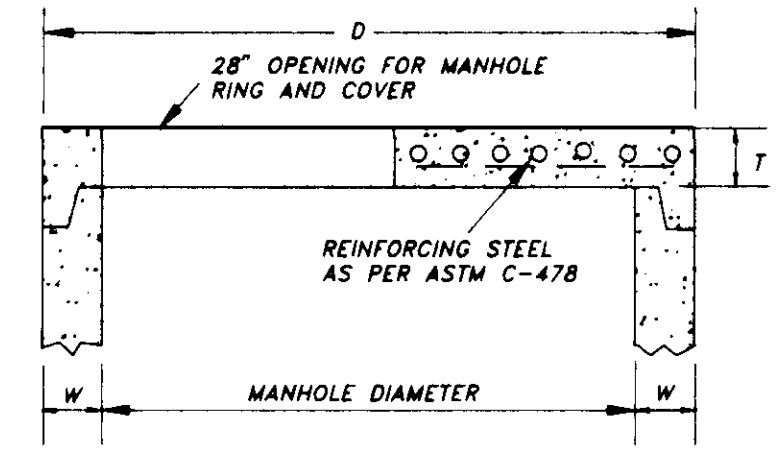


MANHOLE FLOW CHANNELS DETAIL

TYPICAL CLAY PIPE CONNECTION TO MANHOLE



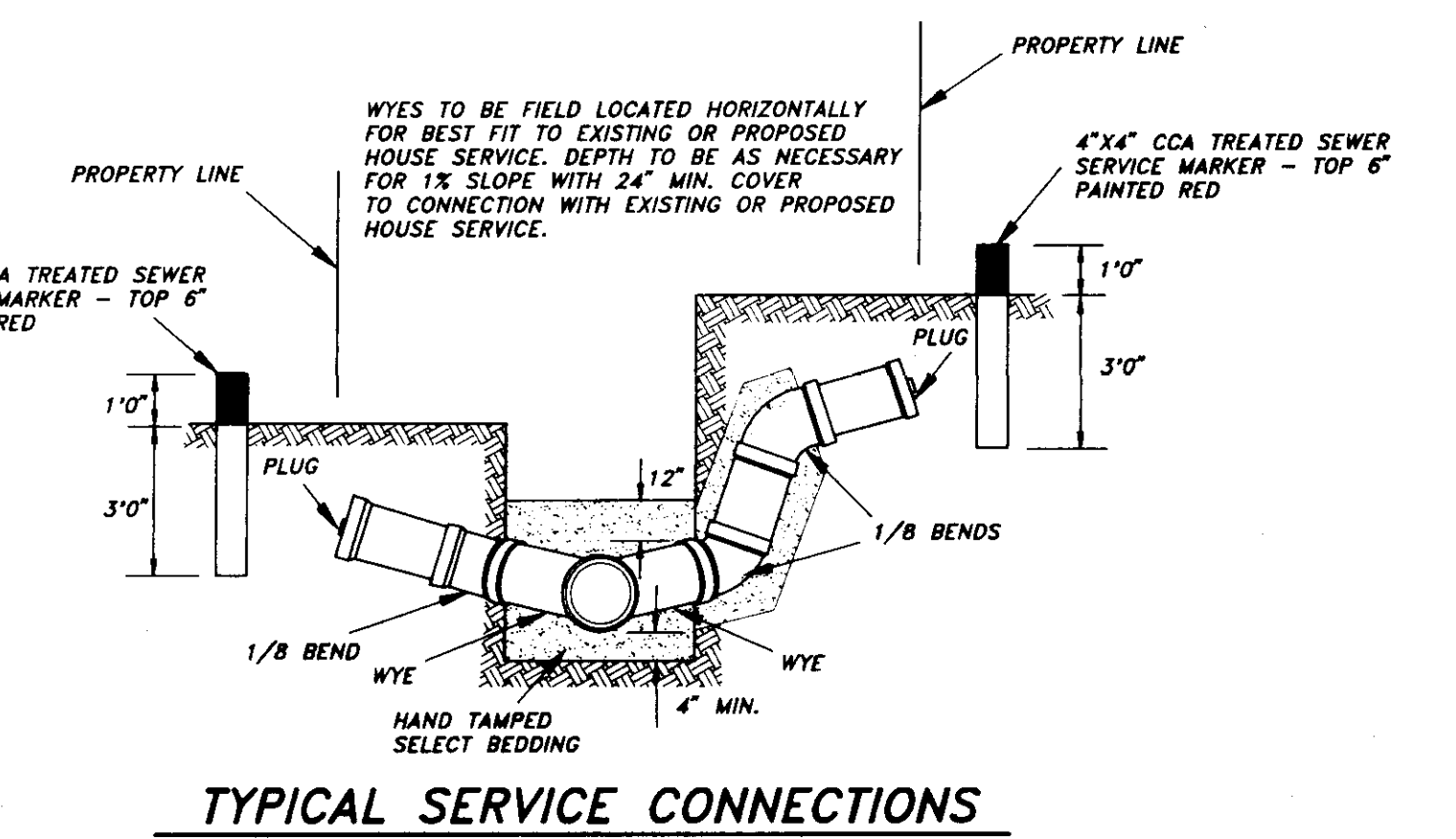
MANHOLE CASTING DETAILS



DIMENSION TABLE

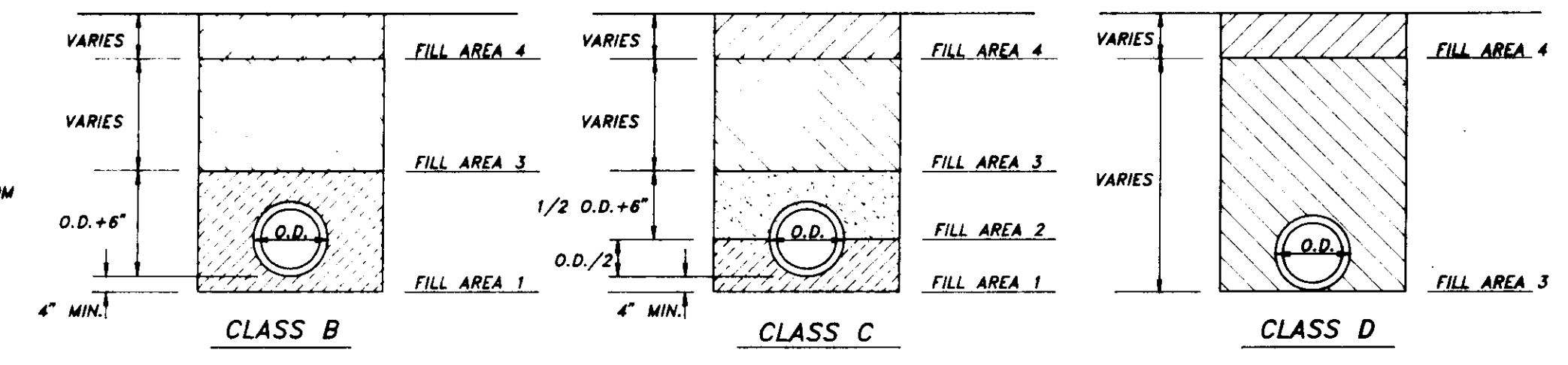
PIPE DIAMETER	W	D	T
48"	5"	58"	6"
60"	5"	72"	8"
72"	7"	86"	8"
84"	8"	100"	8"
96"	9"	114"	8"
108"	10"	128"	8"

FLAT SLAB MANHOLE TOP

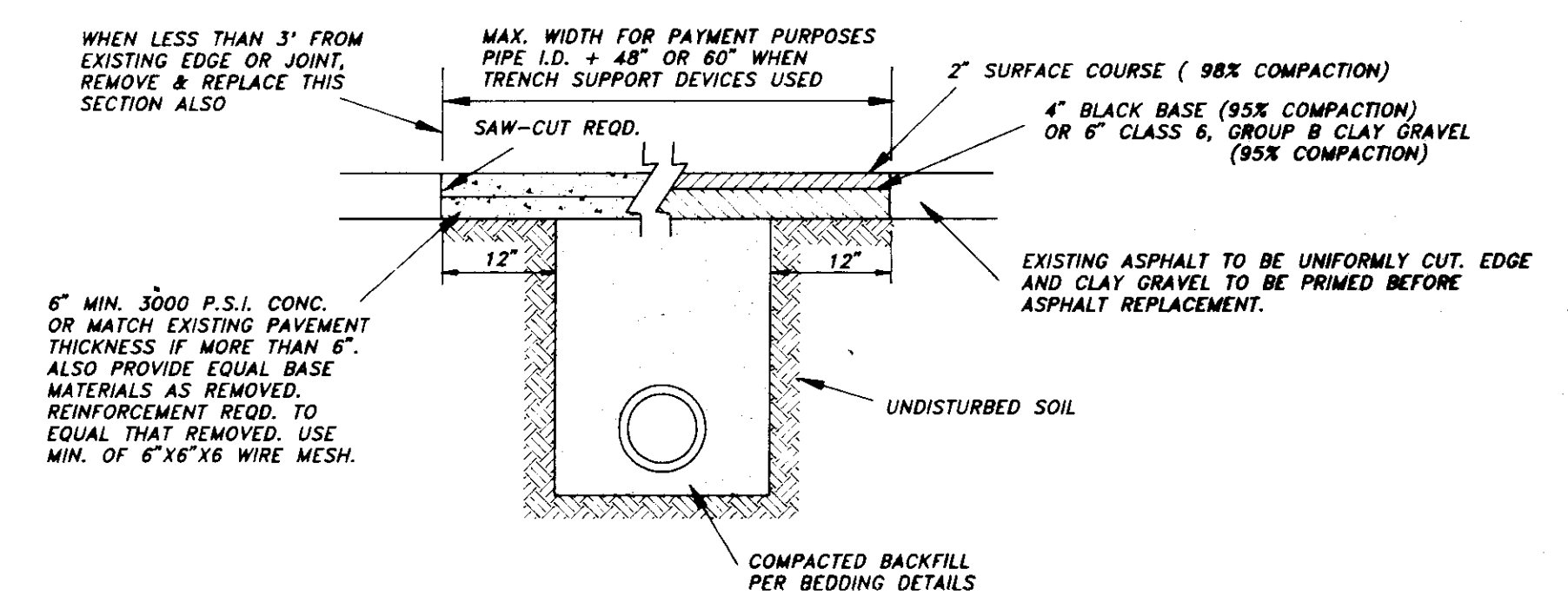


TYPICAL SERVICE CONNECTIONS

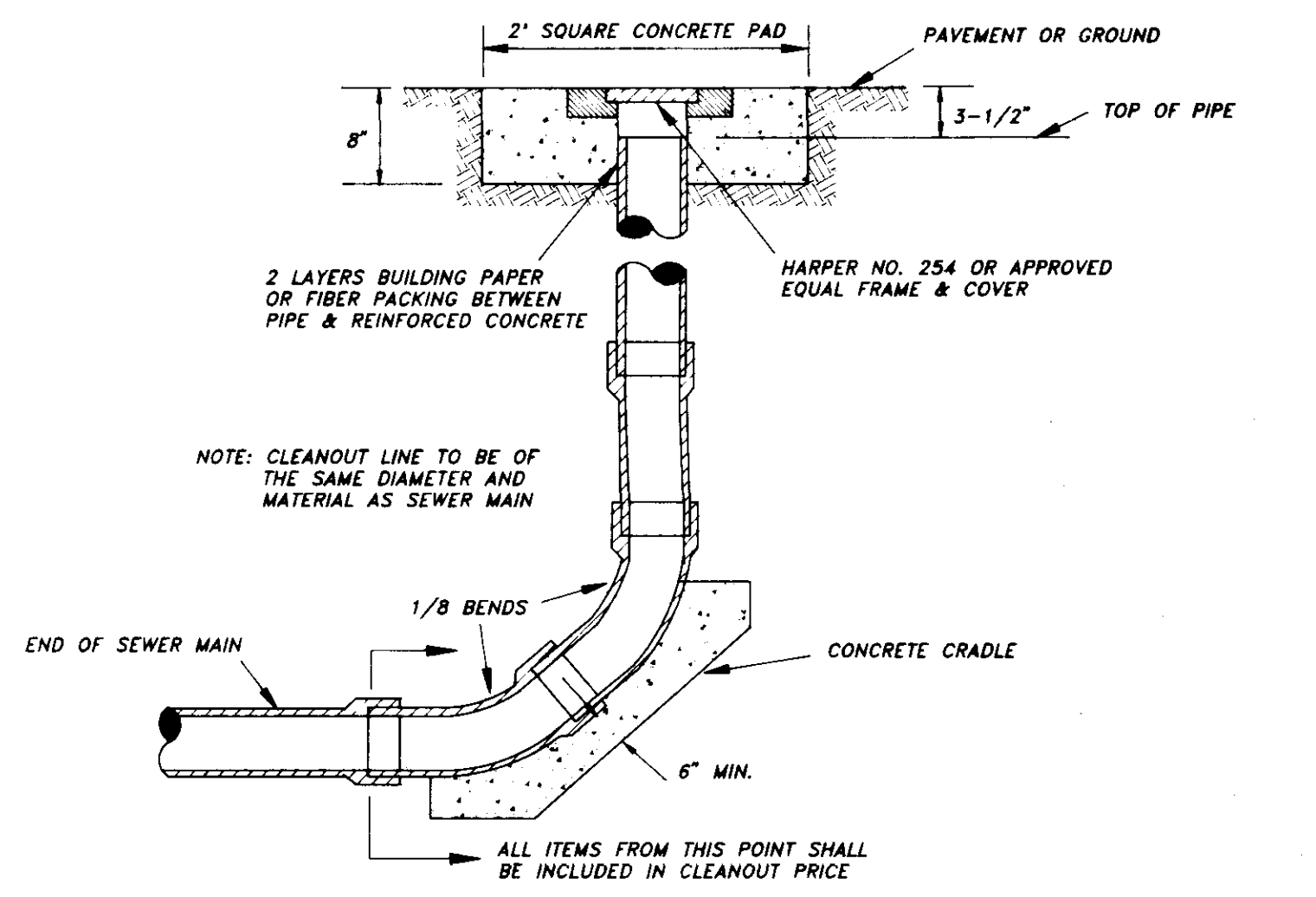
FILL AREA 1 (all locations) - 6" MAXIMUM LOOSE LIFTS, HAND OR MECHANICALLY TAMPED TO 95% DENSITY.
FILL AREA 2 (all locations) - 6" MAXIMUM LOOSE LIFTS, HAND OR MECHANICALLY TAMPED TO 95% DENSITY.
FILL AREA 3 (select locations) - 12" MAXIMUM LOOSE LIFTS MECHANICALLY TAMPED TO 95% DENSITY.
FILL AREA 4 - SEE PAVEMENT REPLACEMENT DETAIL FOR PAVED AREAS. AT OTHER LOCATIONS BRING FILL AREA 3 TO SURFACE.



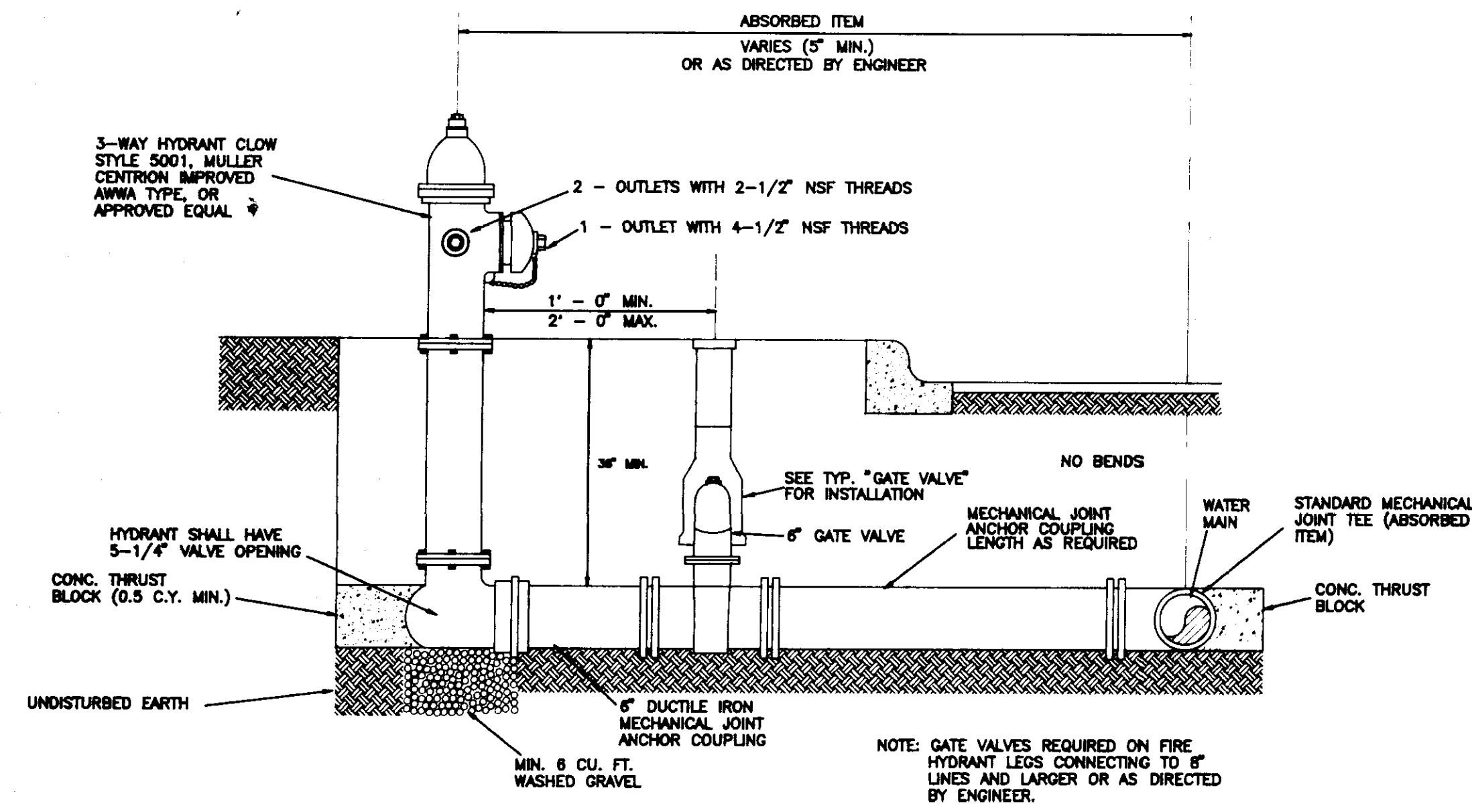
BEDDING / BACKFILLING DETAILS



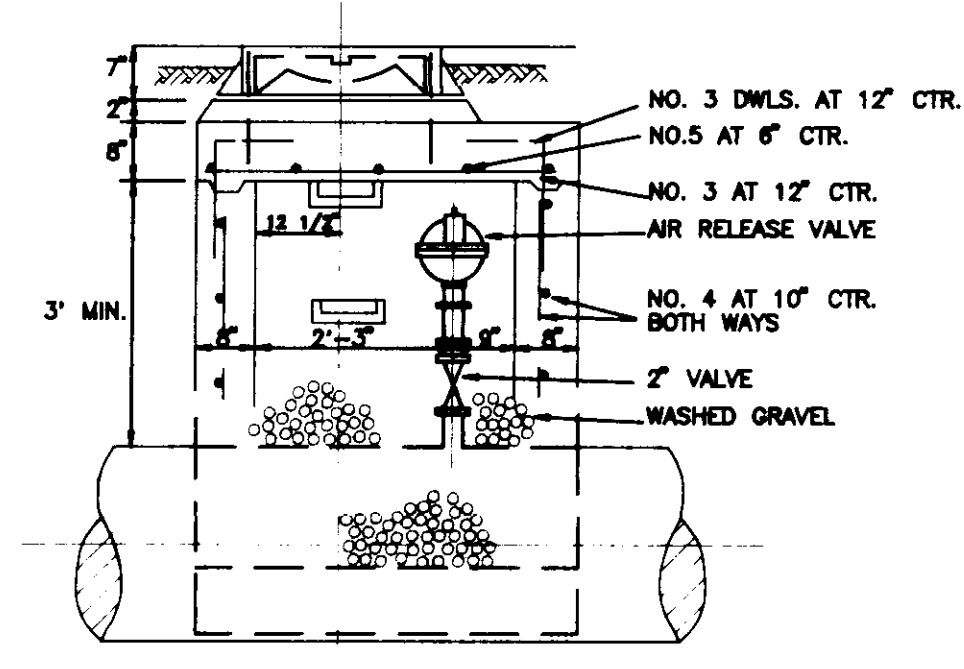
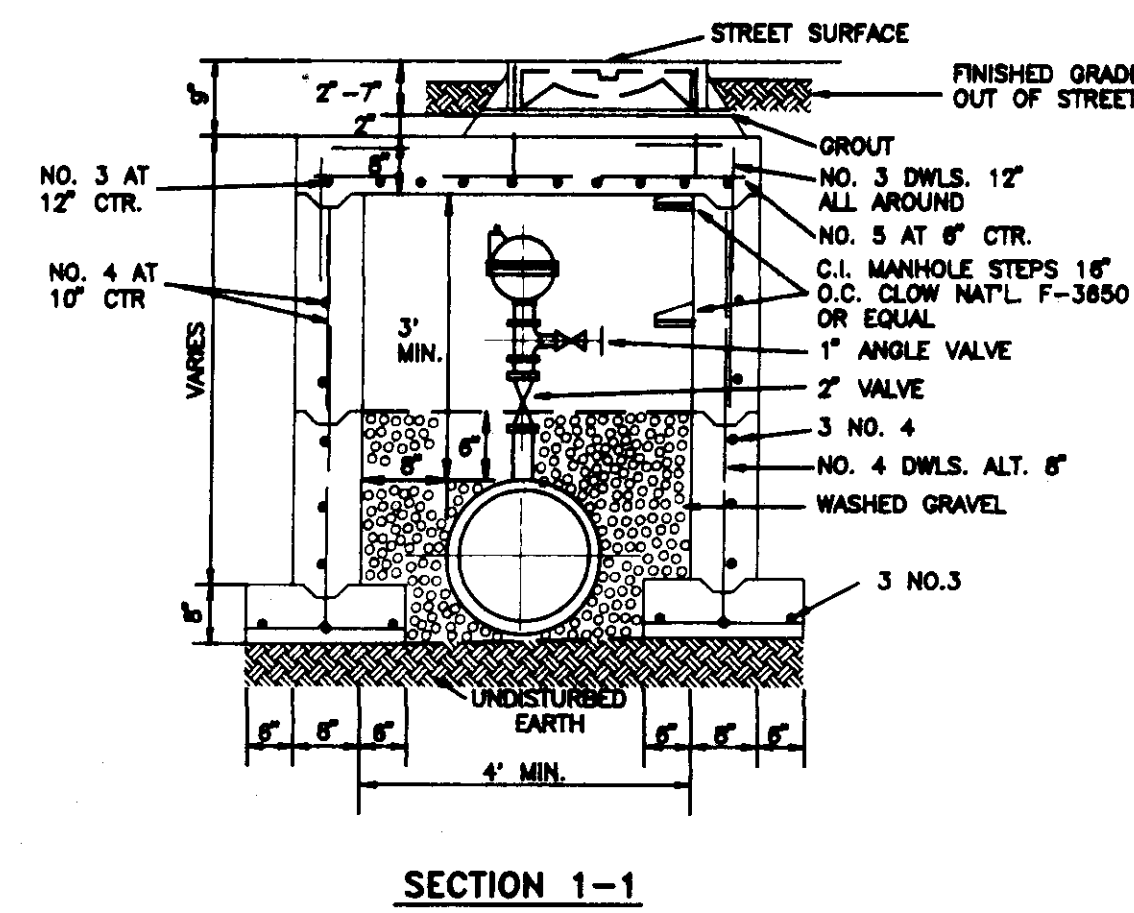
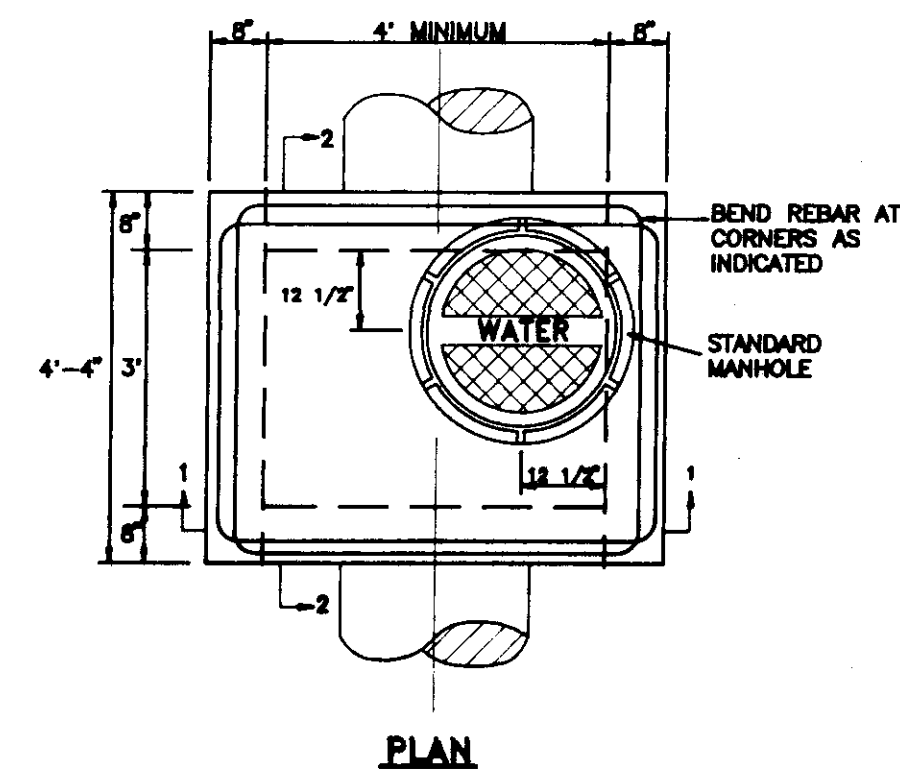
REMOVAL & REPLACEMENT OF EXISTING PAVEMENT



TERMINAL CLEANOUT

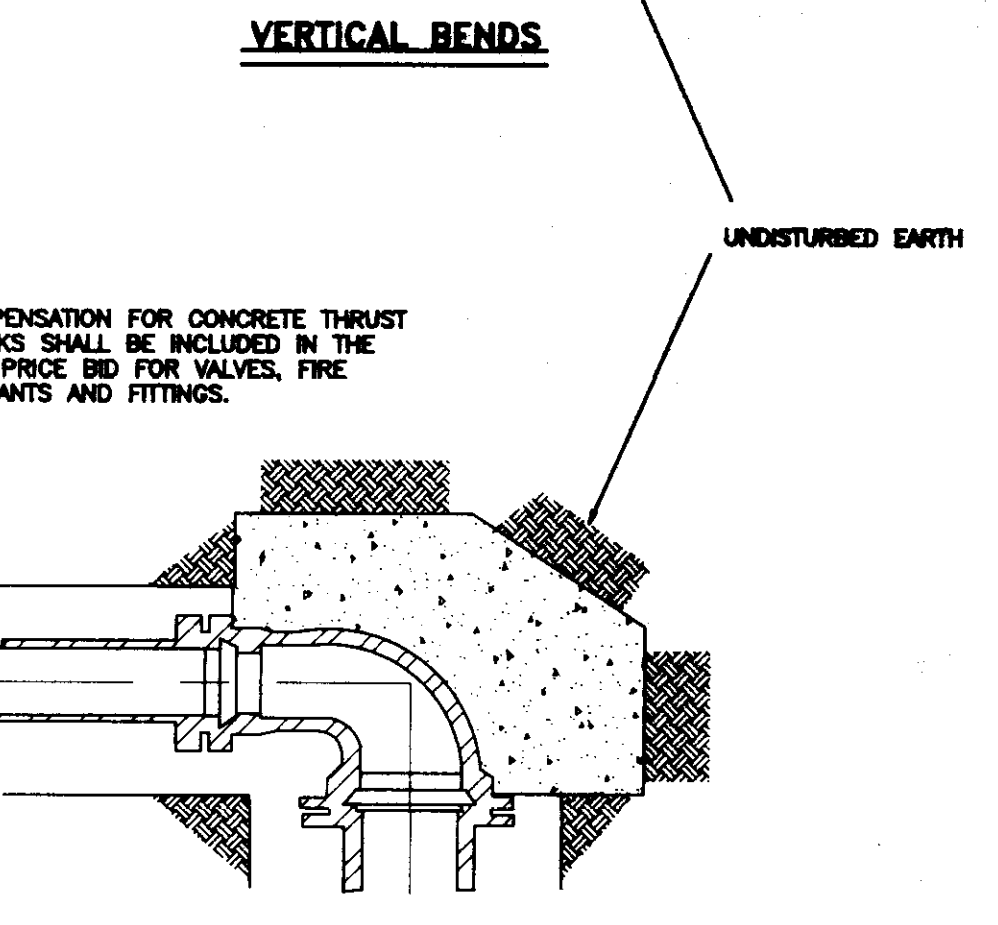
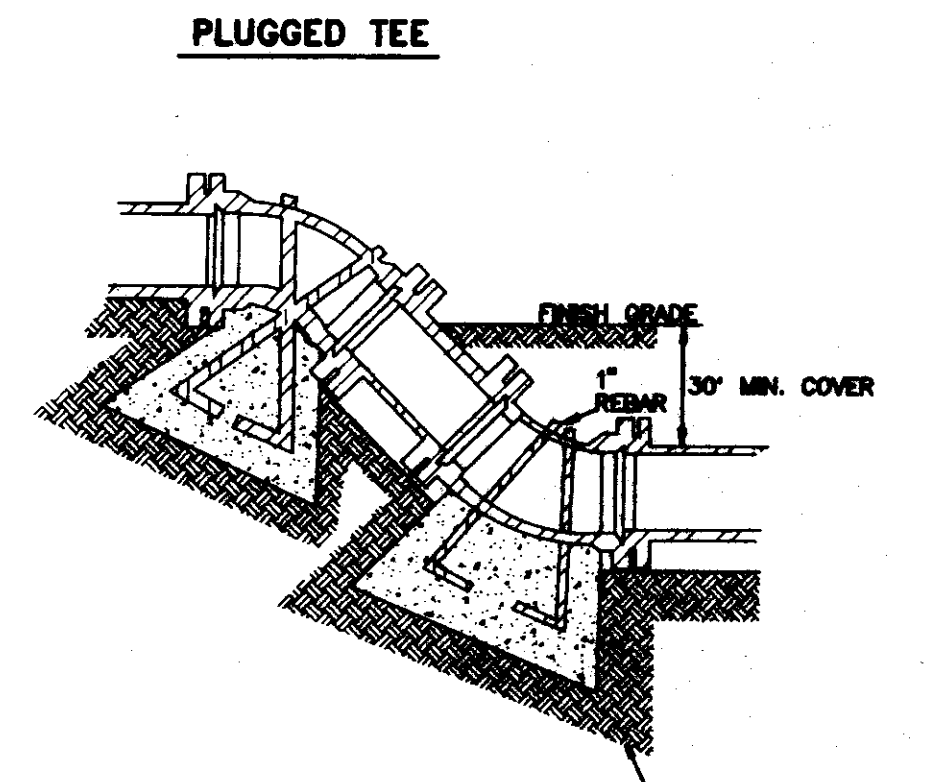
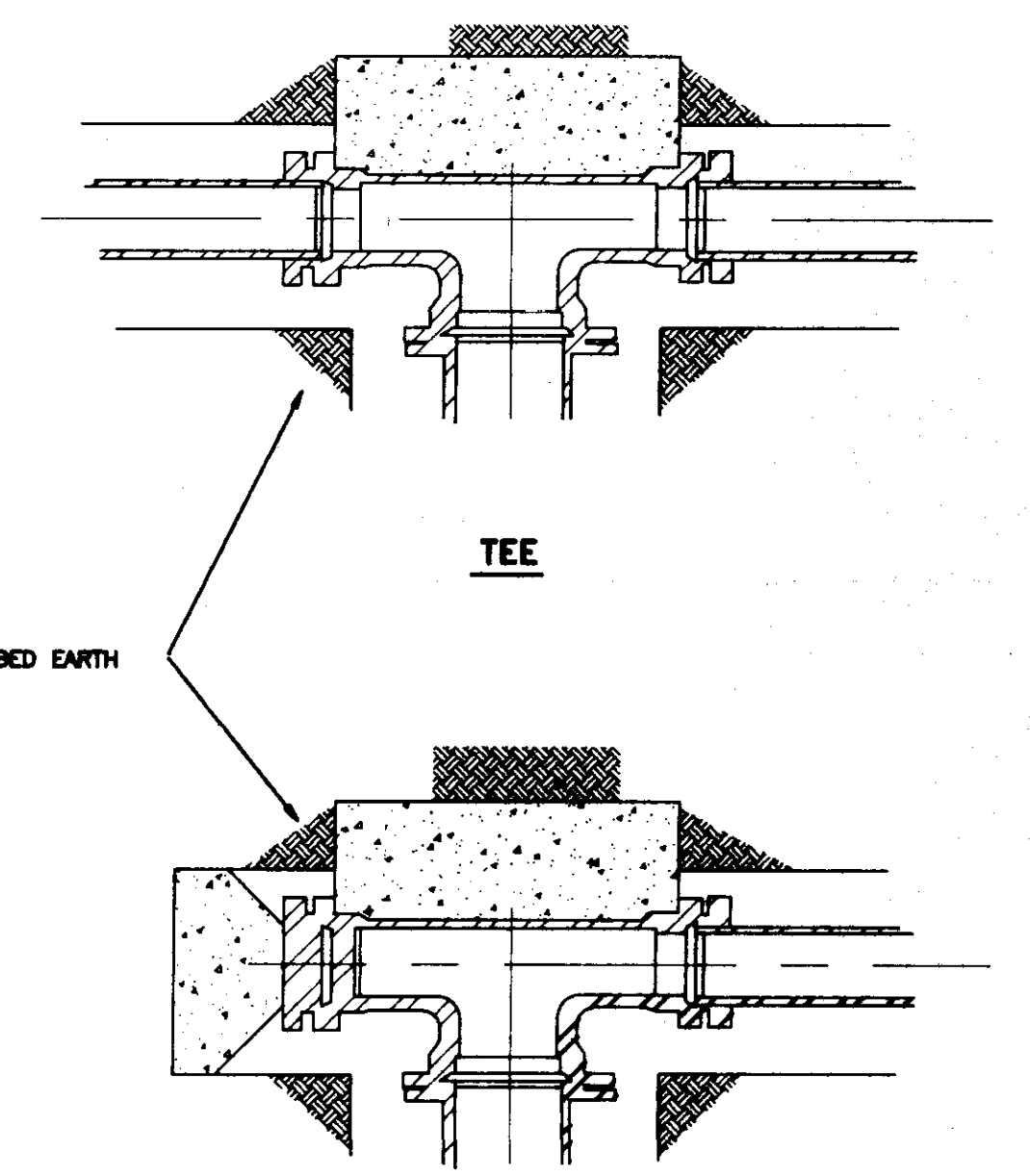
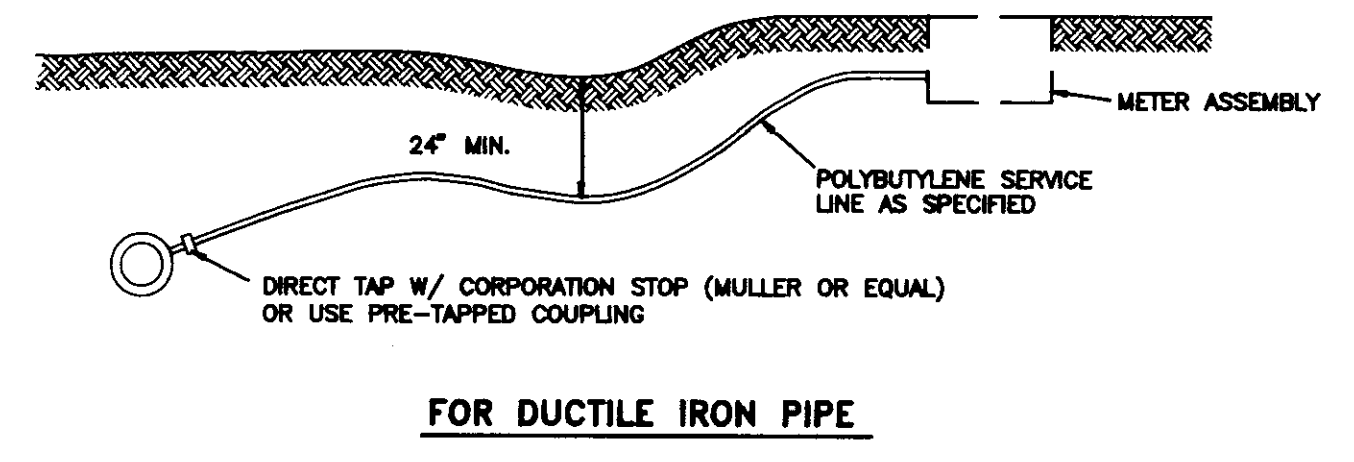
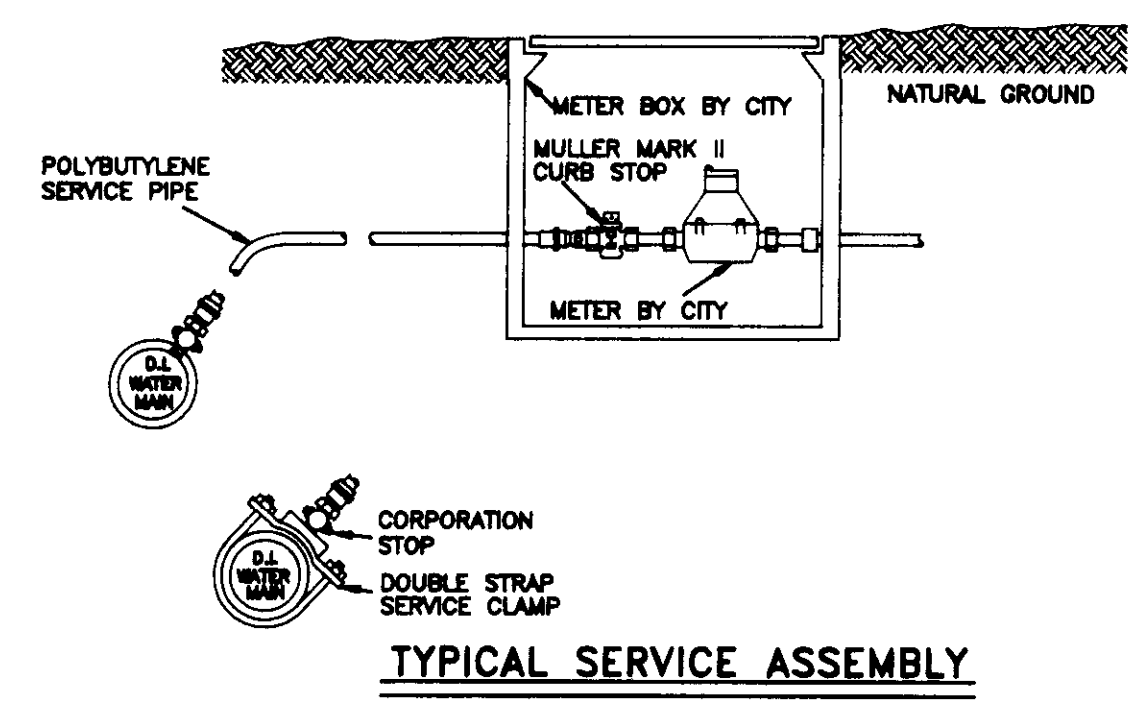
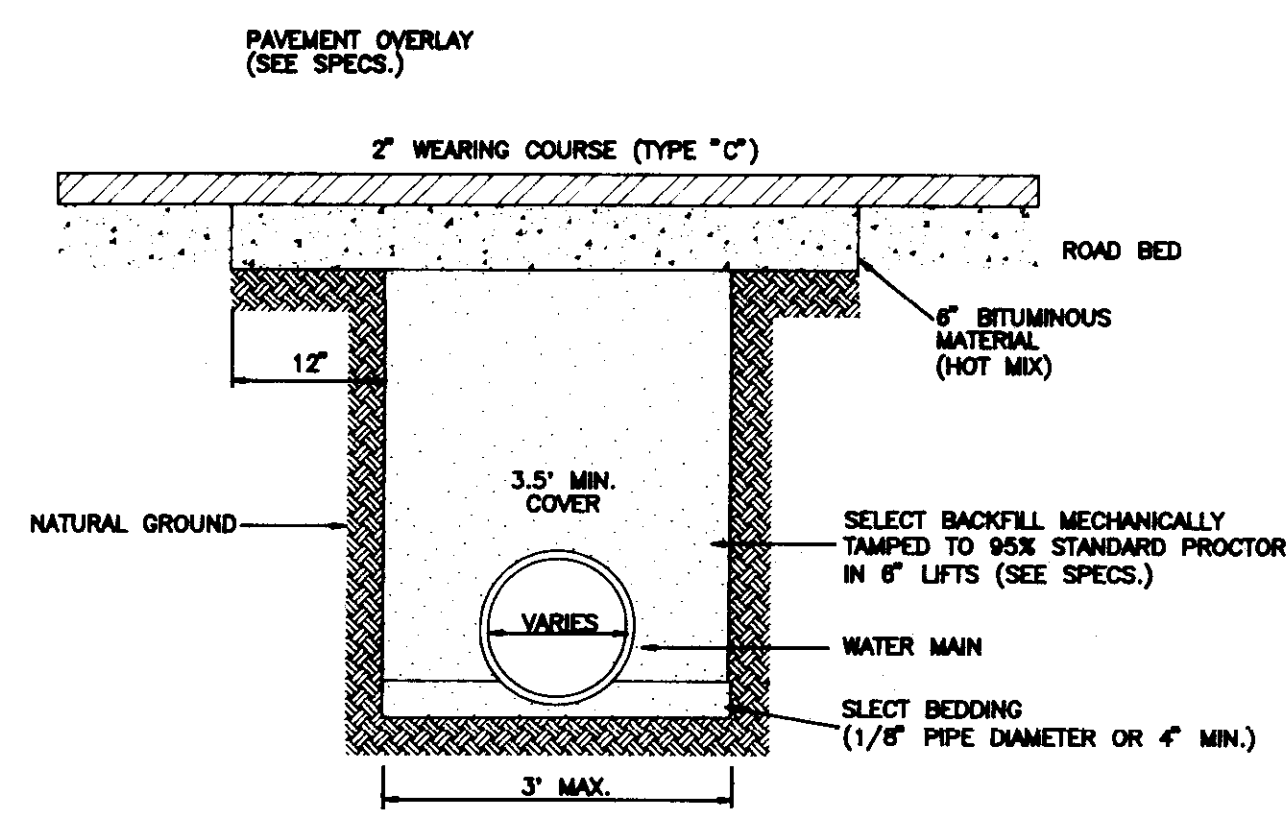
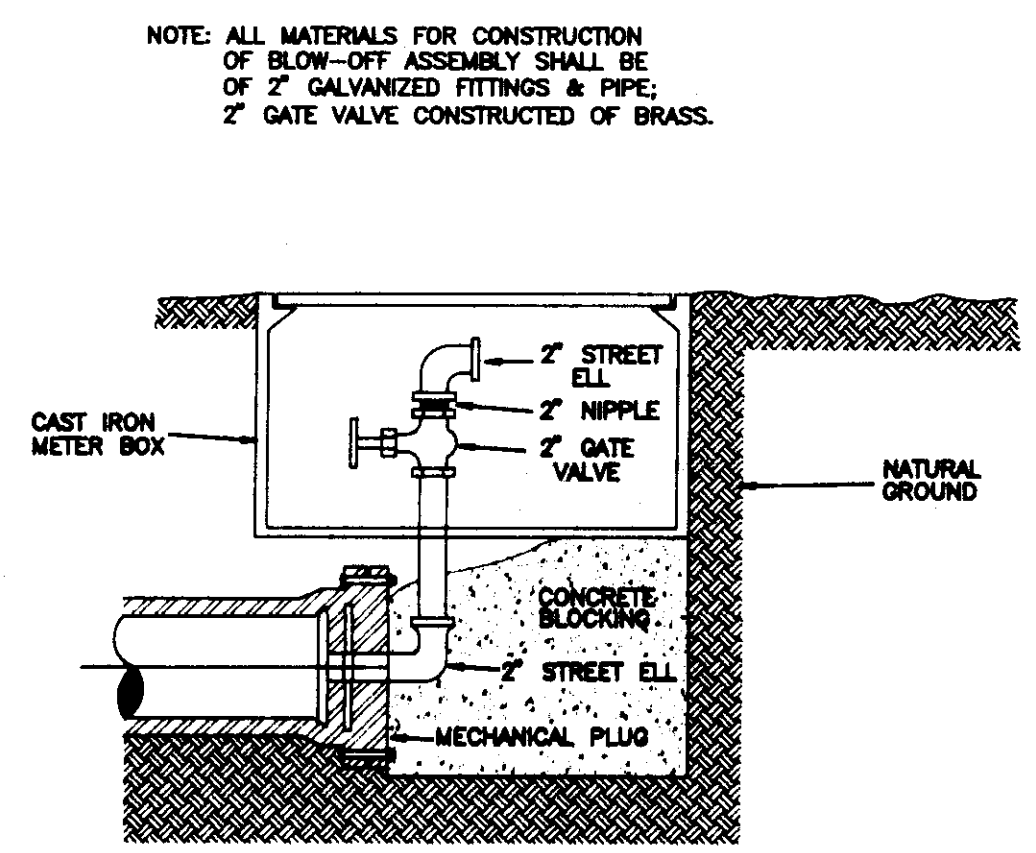


FIRE HYDRANT ASSEMBLY



TYPICAL AIR RELEASE VALVE AND MANHOLE

NOTE: STANDARD 4" (FOUR FOOT) PRECAST CONCRETE MANHOLE USED IN LIEU OF TYPICAL SECTION.



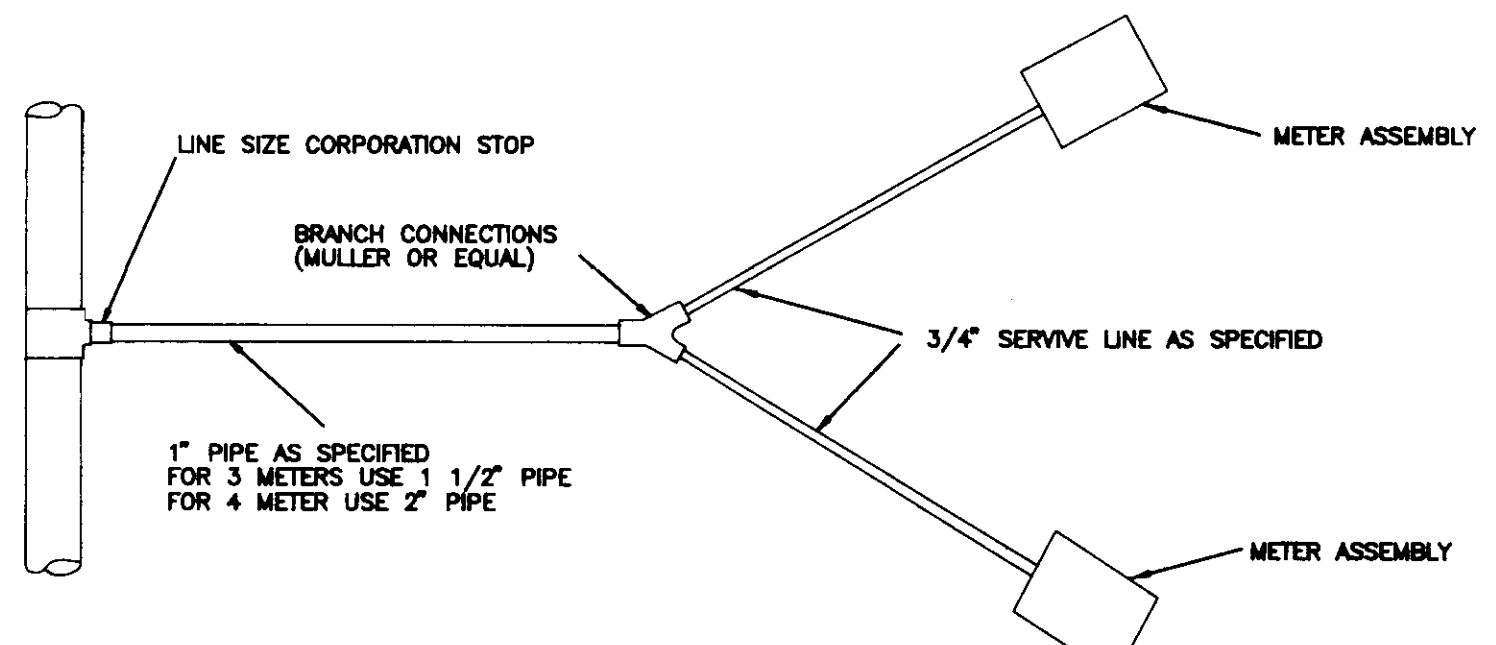
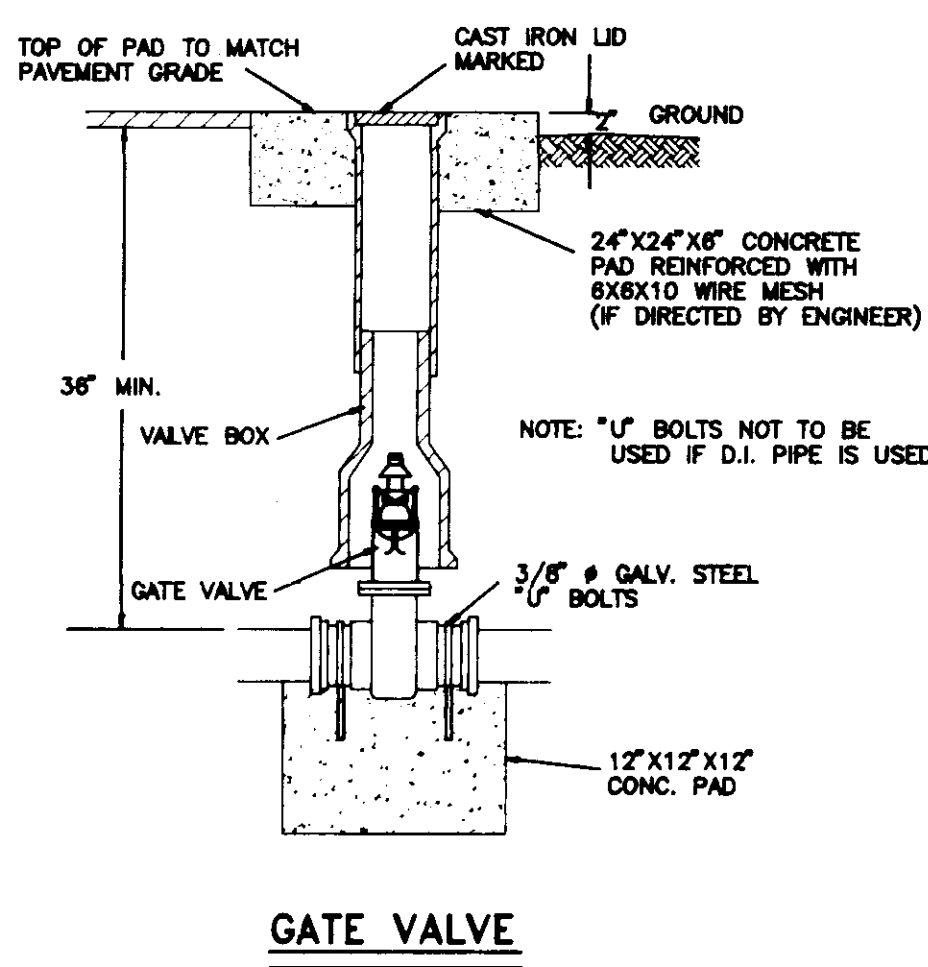
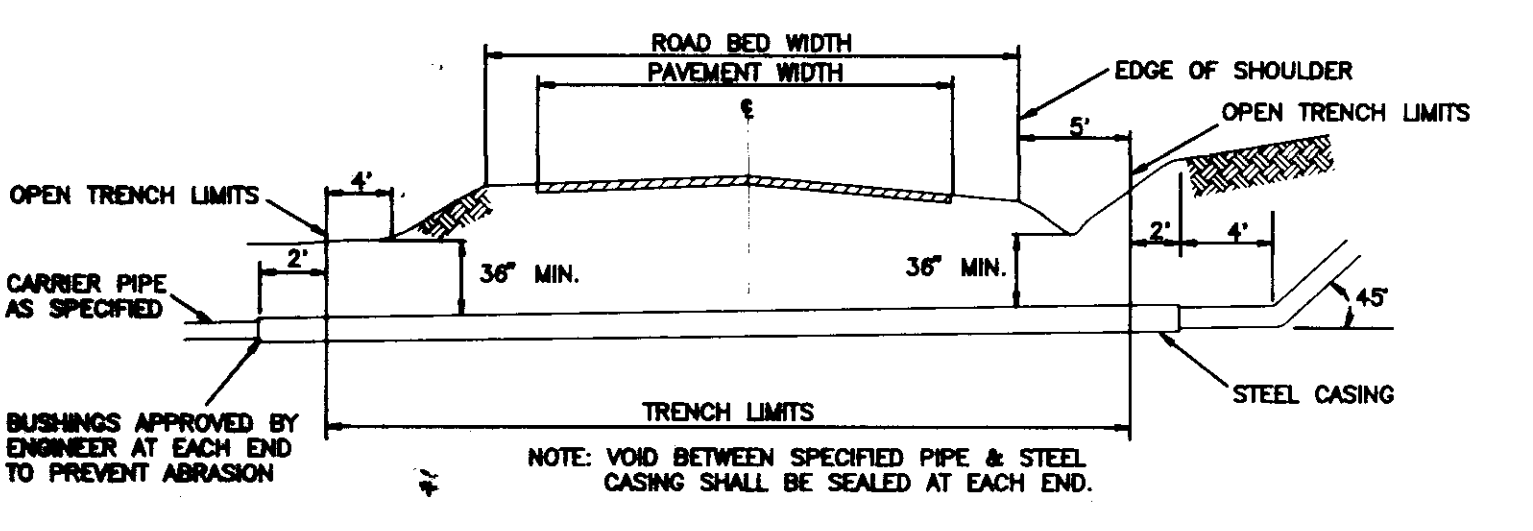
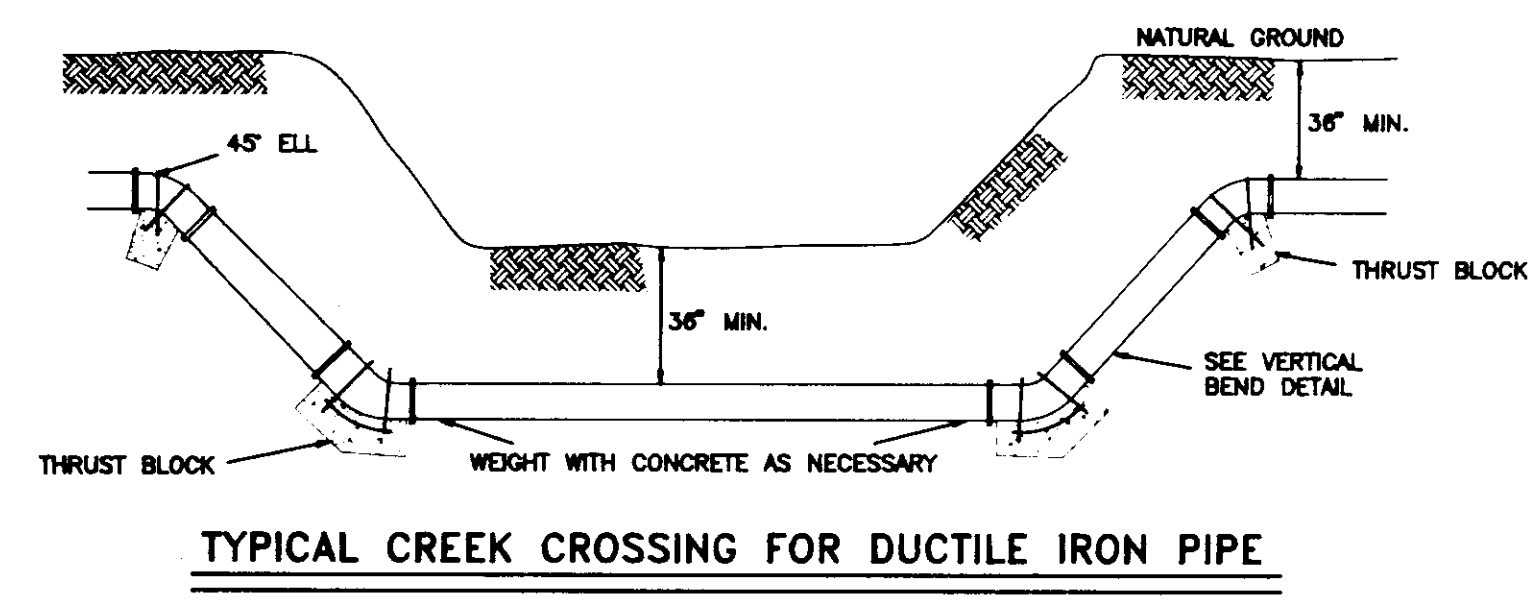
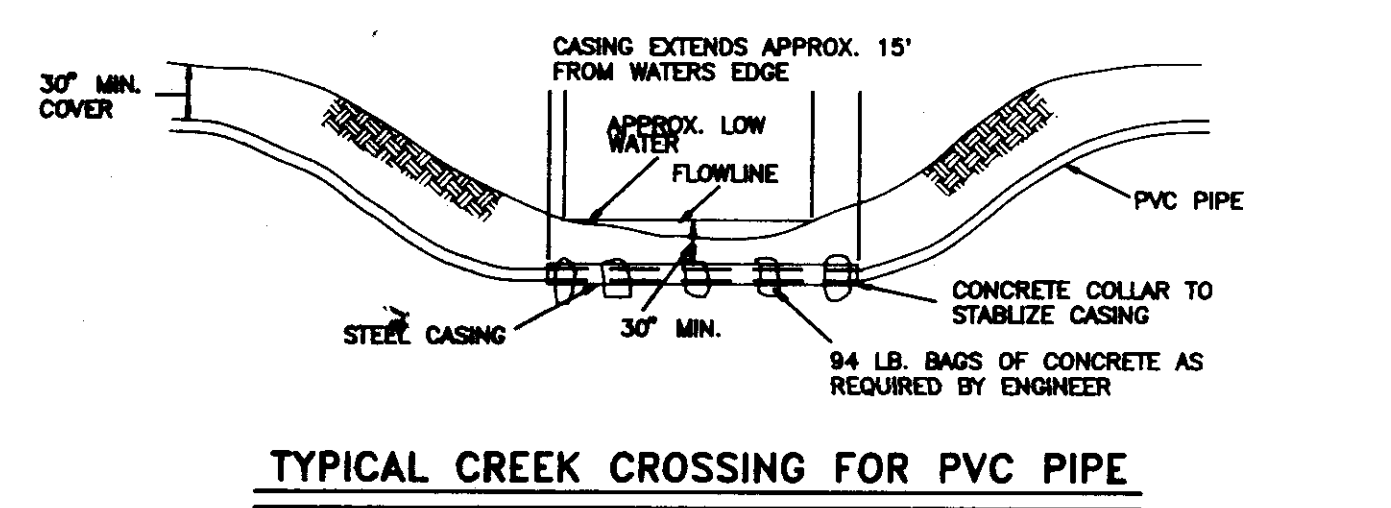
TYPICAL BLOCKING ON WATER MAIN
(3000 PSI CONCRETE REQUIRED)

BEARING AREA IN SQ. FT.

MINIMUM PIPE DIAMETER (IN.)	24" MIN. ON TEE	24" MIN. ON TEE	24" MIN. ON TEE	24" MIN. ON TEE	11 1/2" MIN.
4	2.0	2.0	2.0	2.0	2.0
6	2.0	2.0	2.0	2.0	2.0
8	2.0	2.0	2.0	2.0	2.0
12	2.0	2.0	2.0	2.0	2.0
16	2.0	2.0	2.0	2.0	2.0

VERTICAL BENDS				
4	0.8 (2.0)	4.0 (1.0)	4.0 (1.0)	
6		14.0 (2.0)	0.8 (2.0)	4.0 (1.0)
8		27.0 (1.0)	0.8 (2.0)	0.8 (2.0)
12		68.0 (2.0)	28.0 (2.0)	0.8 (2.0)
16		99.0 (2.0)	28.0 (1.0)	18.0 (2.0)

VOLUME OF BLOCKS INCLUDING SIDE LOAD (SQ. FT. (CUB. YD.))



NOTE: TAPS, SADDLES, CORPORATION STOP, & BRANCH CONNECTIONS SHALL BE ABSORBED IN THE COST PER LINEAR FOOT OF SERVICE PIPE. MEASUREMENT OF SERVICE LINE SHALL END AT METER BOX.

SERVICE CONNECTIONS

REYNOLDS ENGINEERING, INC.
POST OFFICE BOX 526 JACKSON, MISSISSIPPI 39205

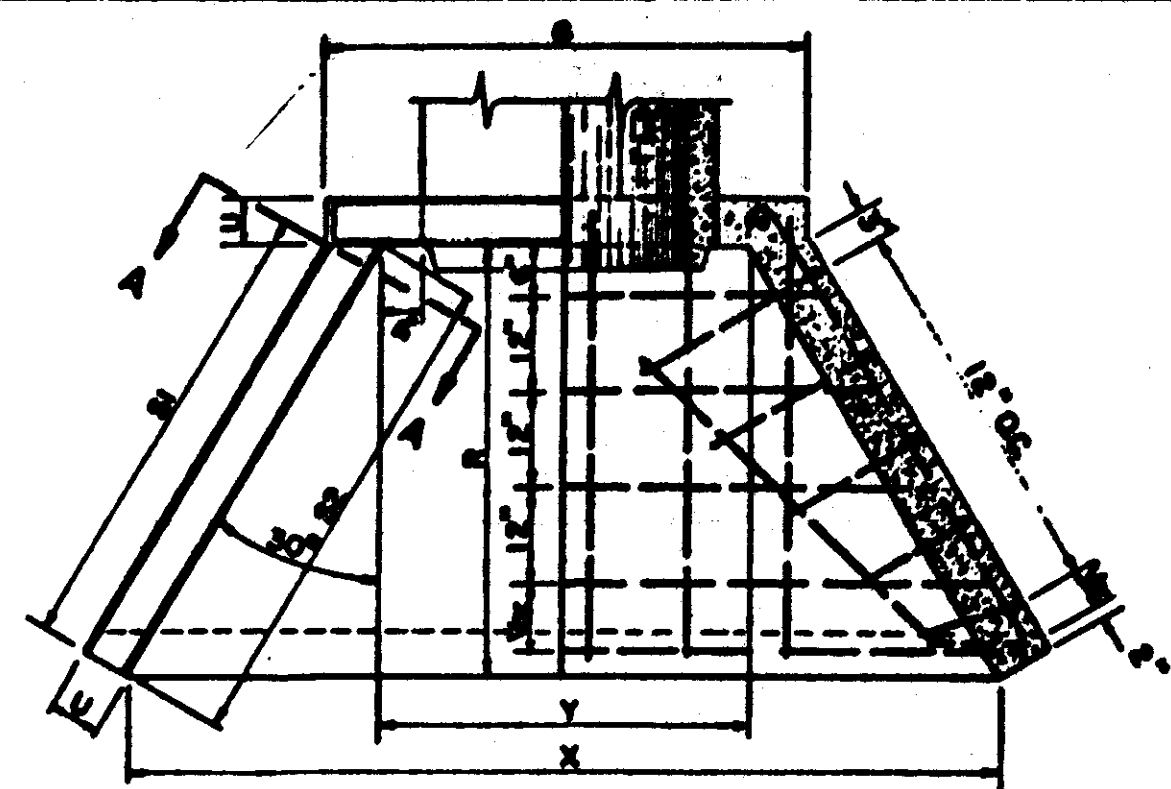
STANDARD WATER DETAILS

DATE _____

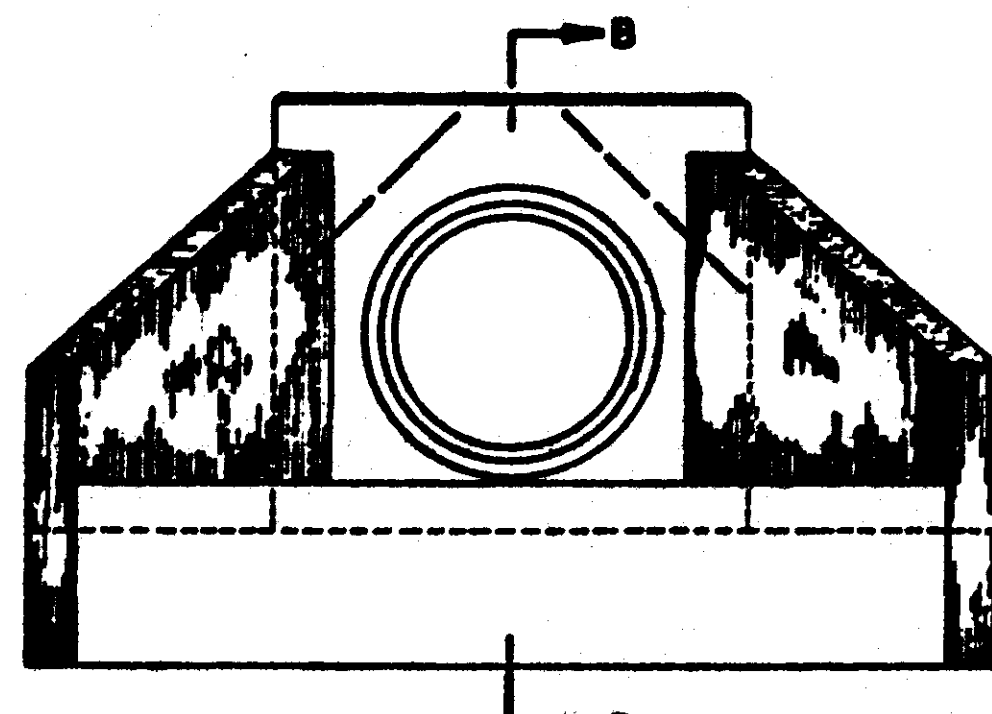
SCALE _____

BOOK _____ PAGE _____

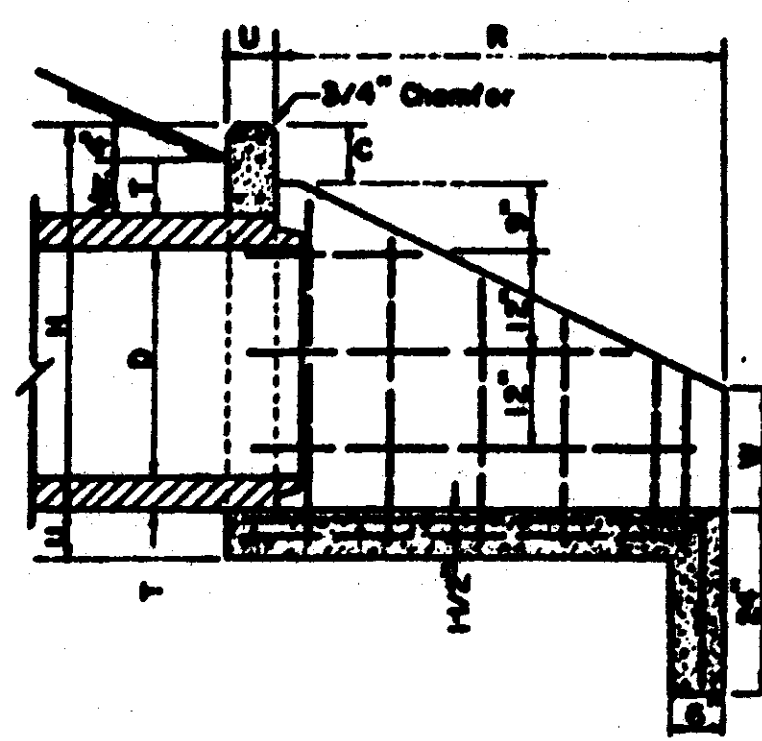
PROJECT NO. _____



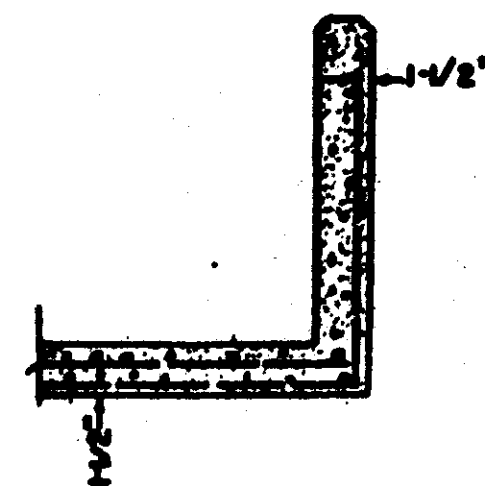
PLAN



FRONT ELEVATION

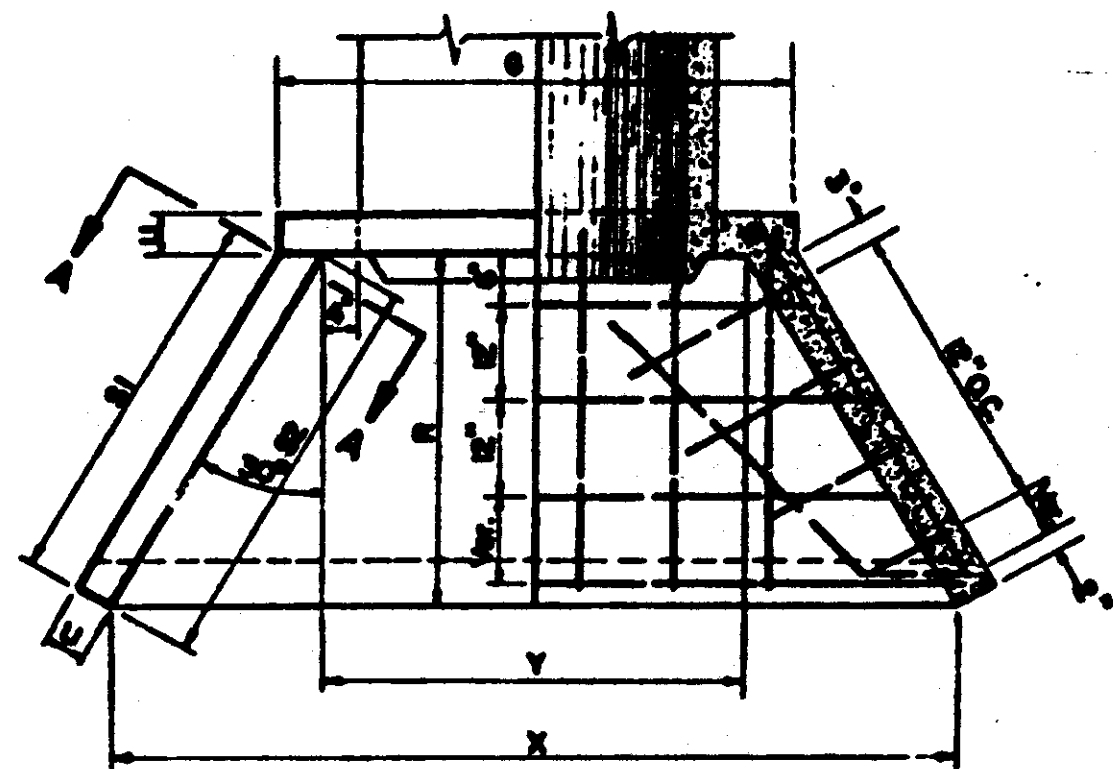


SECTION "B"-B"

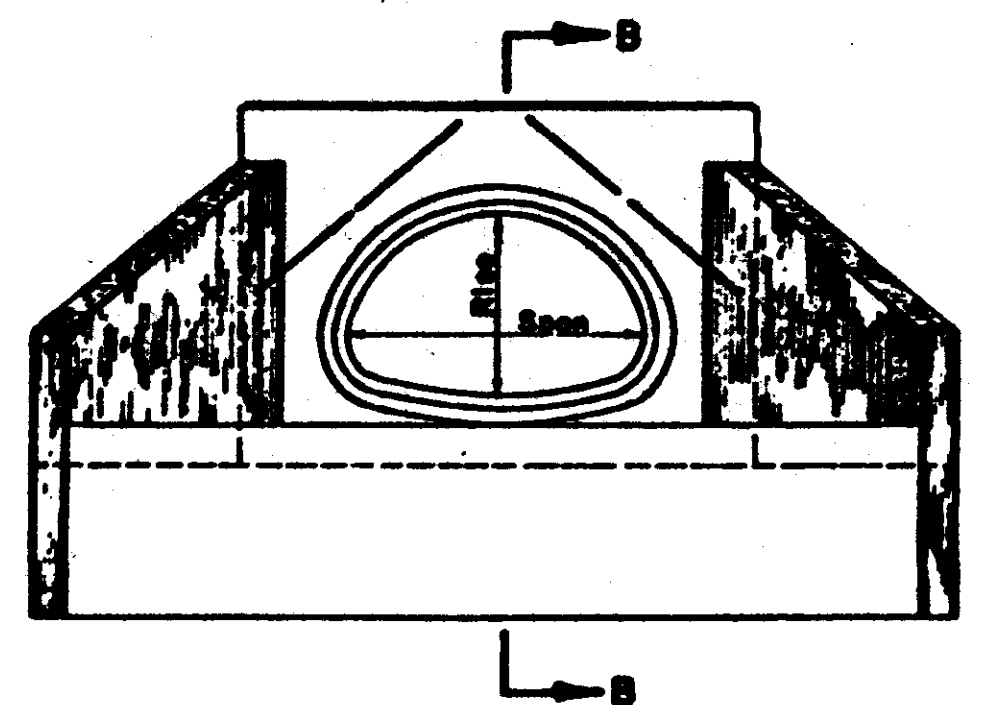


SECTION "A"-A"

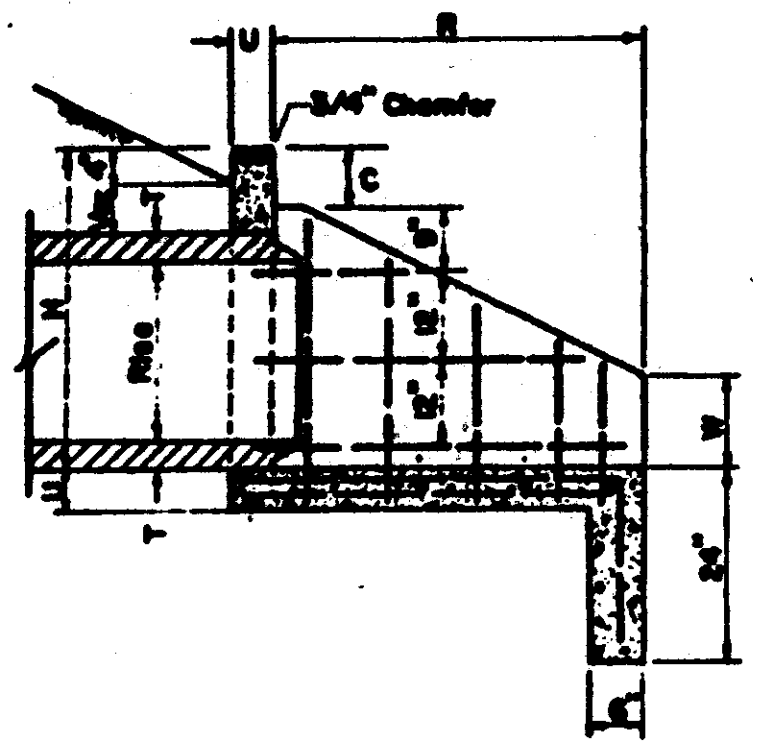
FLARED HEADWALL FOR SINGLE LINE ARCH CULVERT								
PIPE SIZE	C	G	H	R	S1	S2	U	W
15"	7"	3'-0 1/2"	2'-0"	2'-0"	2'-0"	2'-0"	2'-0"	2'-0"
18"	7"	3'-0 1/2"	2'-0"	2'-0"	2'-0"	2'-0"	2'-0"	2'-0"
24"	7"	3'-0 1/2"	2'-0"	2'-0"	2'-0"	2'-0"	2'-0"	2'-0"
30"	7"	3'-0 1/2"	2'-0"	2'-0"	2'-0"	2'-0"	2'-0"	2'-0"
36"	7"	3'-0 1/2"	2'-0"	2'-0"	2'-0"	2'-0"	2'-0"	2'-0"
42"	7"	3'-0 1/2"	2'-0"	2'-0"	2'-0"	2'-0"	2'-0"	2'-0"
48"	7"	3'-0 1/2"	2'-0"	2'-0"	2'-0"	2'-0"	2'-0"	2'-0"
54"	7"	3'-0 1/2"	2'-0"	2'-0"	2'-0"	2'-0"	2'-0"	2'-0"
60"	7"	3'-0 1/2"	2'-0"	2'-0"	2'-0"	2'-0"	2'-0"	2'-0"
66"	7"	3'-0 1/2"	2'-0"	2'-0"	2'-0"	2'-0"	2'-0"	2'-0"
72"	7"	3'-0 1/2"	2'-0"	2'-0"	2'-0"	2'-0"	2'-0"	2'-0"
78"	7"	3'-0 1/2"	2'-0"	2'-0"	2'-0"	2'-0"	2'-0"	2'-0"
84"	7"	3'-0 1/2"	2'-0"	2'-0"	2'-0"	2'-0"	2'-0"	2'-0"



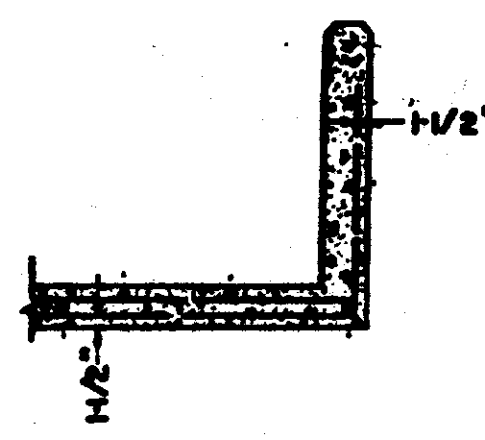
PLAN



FRONT ELEVATION

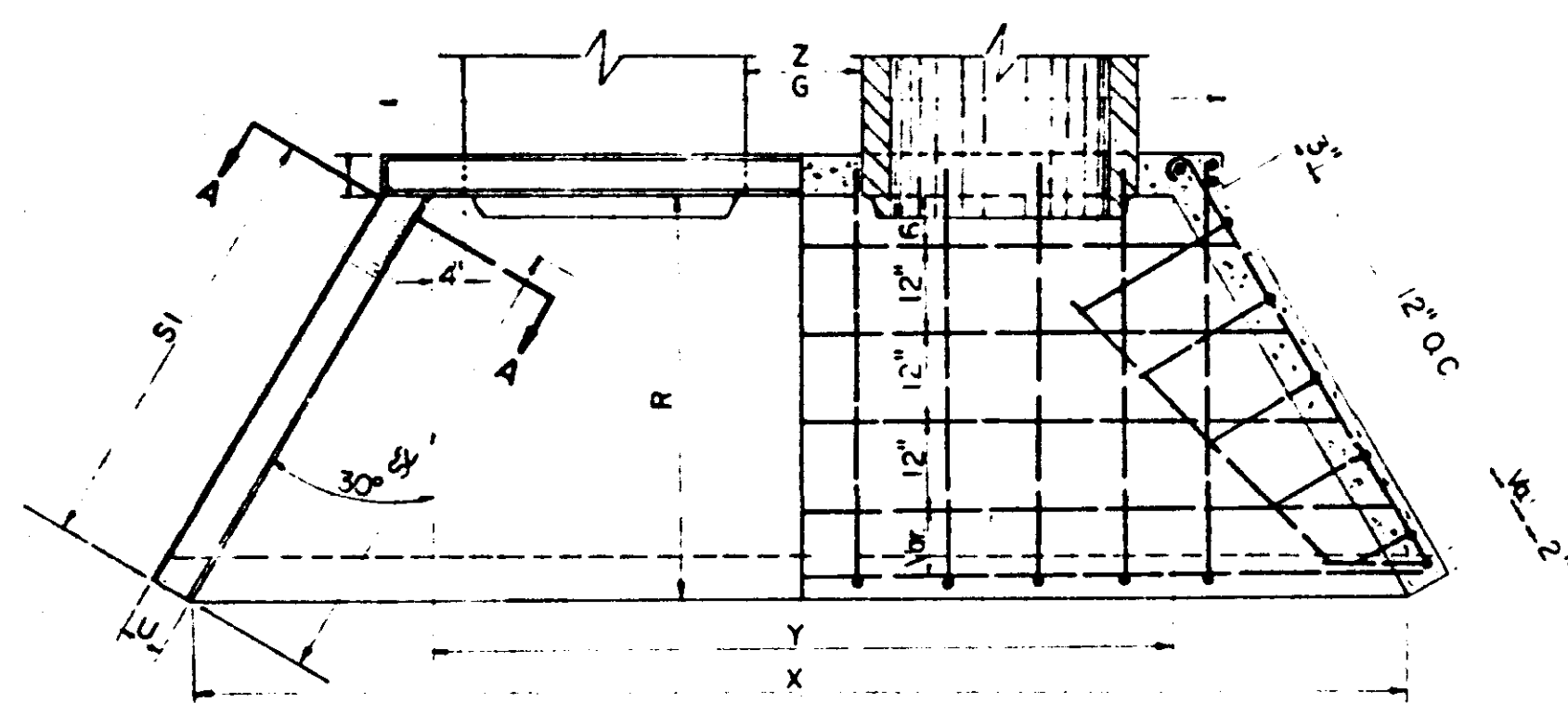


SECTION "B"-B"

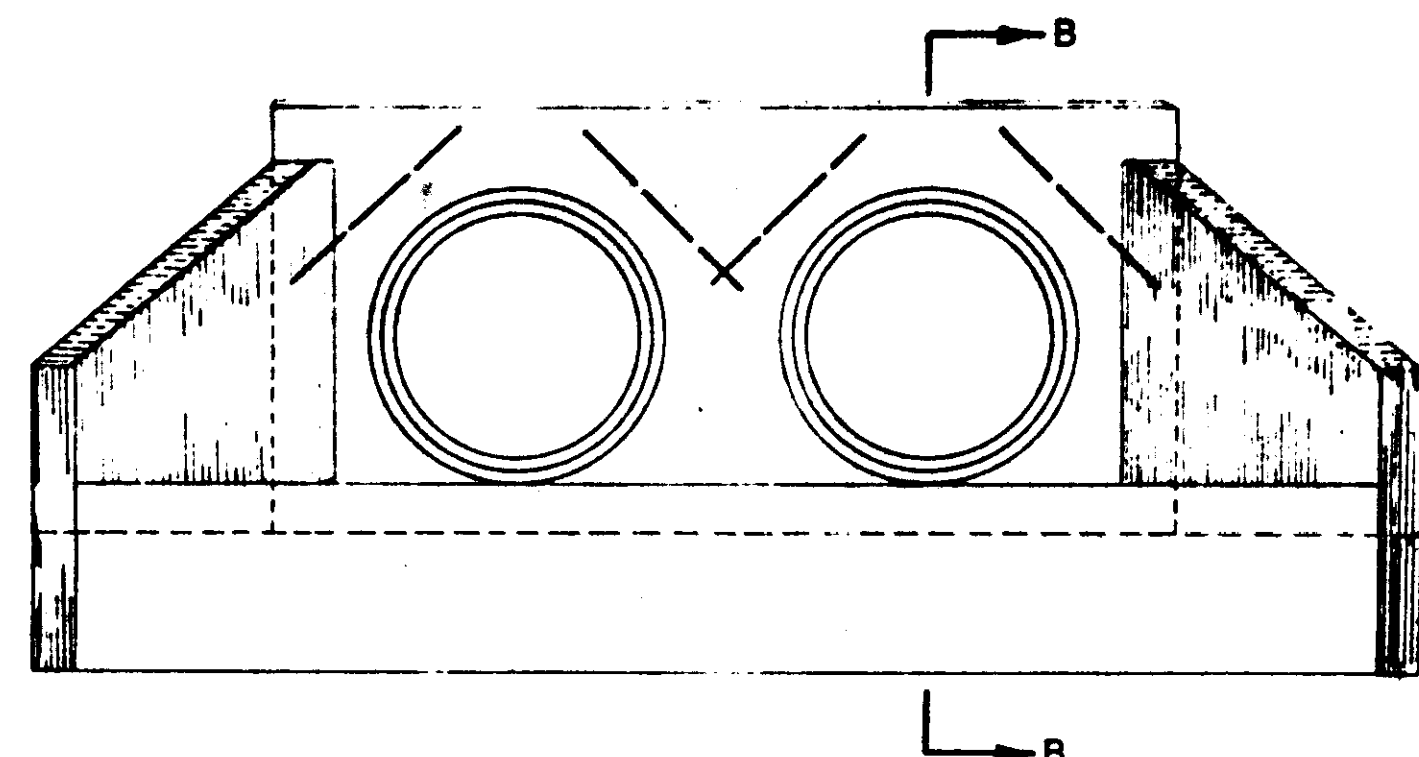


SECTION "A"-A"

FLARED HEADWALL FOR SINGLE LINE ARCH CULVERT								
PIPE SIZE	C	G	H	R	S1	S2	U	W
15"	7"	3'-0 1/2"	2'-0"	2'-0"	2'-0"	2'-0"	2'-0"	2'-0"
18"	7"	3'-0 1/2"	2'-0"	2'-0"	2'-0"	2'-0"	2'-0"	2'-0"
24"	7"	3'-0 1/2"	2'-0"	2'-0"	2'-0"	2'-0"	2'-0"	2'-0"
30"	7"	3'-0 1/2"	2'-0"	2'-0"	2'-0"	2'-0"	2'-0"	2'-0"
36"	7"	3'-0 1/2"	2'-0"	2'-0"	2'-0"	2'-0"	2'-0"	2'-0"
42"	7"	3'-0 1/2"	2'-0"	2'-0"	2'-0"	2'-0"	2'-0"	2'-0"
48"	7"	3'-0 1/2"	2'-0"	2'-0"	2'-0"	2'-0"	2'-0"	2'-0"
54"	7"	3'-0 1/2"	2'-0"	2'-0"	2'-0"	2'-0"	2'-0"	2'-0"
60"	7"	3'-0 1/2"	2'-0"	2'-0"	2'-0"	2'-0"	2'-0"	2'-0"
66"	7"	3'-0 1/2"	2'-0"	2'-0"	2'-0"	2'-0"	2'-0"	2'-0"
72"	7"	3'-0 1/2"	2'-0"	2'-0"	2'-0"	2'-0"	2'-0"	2'-0"
78"	7"	3'-0 1/2"	2'-0"	2'-0"	2'-0"	2'-0"	2'-0"	2'-0"
84"	7"	3'-0 1/2"	2'-0"	2'-0"	2'-0"	2'-0"	2'-0"	2'-0"



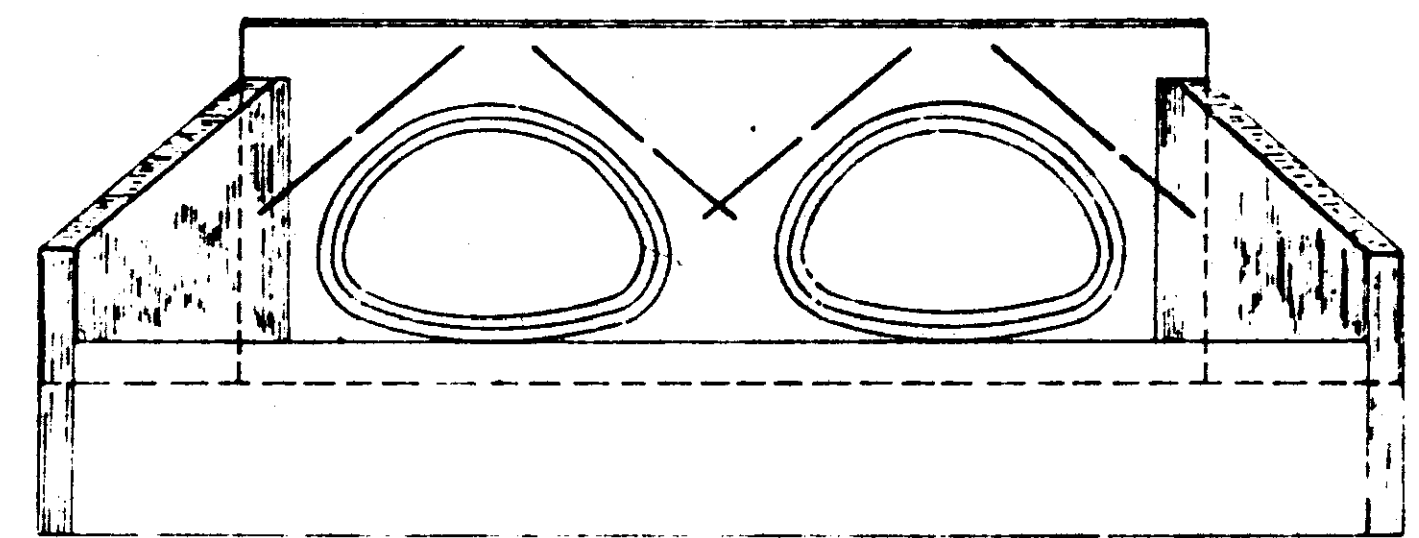
PLAN



FRONT ELEVATION

NOTE: SECTIONS A-A AND B-B FOR DOUBLE LINE CULVERT ARE THE SAME AS FOR SINGLE LINE CULVERT.

FLARED HEADWALL FOR DOUBLE LINE ARCH CULVERT								
PIPE SIZE	C	G	H	R	S1	S2	U	W
15"	7"	5'-0 1/2"	2'-0"	2'-0"	2'-0"	2'-0"	2'-0"	2'-0"
18"	7"	5'-0 1/2"	2'-0"	2'-0"	2'-0"	2'-0"	2'-0"	2'-0"
24"	7"	5'-0 1/2"	2'-0"	2'-0"	2'-0"	2'-0"	2'-0"	2'-0"
30"	7"	5'-0 1/2"	2'-0"	2'-0"	2'-0"	2'-0"	2'-0"	2'-0"
36"	7-1/2"	10'-0 1/2"	2'-0"	2'-0"	2'-0"	2'-0"	2'-0"	2'-0"
42"	7-1/2"	10'-0 1/2"	2'-0"	2'-0"	2'-0"	2'-0"	2'-0"	2'-0"
48"	7-1/2"	10'-0 1/2"	2'-0"	2'-0"	2'-0"	2'-0"	2'-0"	2'-0"
54"	8"	10'-0 1/2"	2'-0"	2'-0"	2'-0"	2'-0"	2'-0"	2'-0"
60"	8"	10'-0 1/2"	2'-0"	2'-0"	2'-0"	2'-0"	2'-0"	2'-0"
66"	8"	10'-0 1/2"	2'-0"	2'-0"	2'-0"	2'-0"	2'-0"	2'-0"
72"	8"	10'-0 1/2"	2'-0"	2'-0"	2'-0"	2'-0"	2'-0"	2'-0"
78"	8"	10'-0 1/2"	2'-0"	2'-0"	2'-0"	2'-0"	2'-0"	2'-0"
84"	8"	10'-0 1/2"	2'-0"	2'-0"	2'-0"	2'-0"	2'-0"	2'-0"



FRONT ELEVATION

FLARED HEADWALL FOR DOUBLE LINE ARCH CULVERT								
PIPE SIZE	C	G	H	R	S1	S2	U	W
22" x 18"	7"	7'-1 1/2"	2'-4 1/2"	2'-0"	2'-7 1/2"	2'-0 1/2"	2'-0"	2'-0"
30" x 18"	7"	8'-7 1/4"	2'-10 1/2"	2'-0"	3'-3 3/8"	2'-0 1/2"	2'-0"	2'-0"
36" x 23"	7"	9'-9"	3'-0"	2'-0"	4'-0"	2'-0 1/2"	2'-0"	2'-0"
44" x 27"	7"	11'-6 1/2"	3'-0"	2'-0"	4'-0"	2'-0 1/2"	2'-0"	2'-0"
51" x 31"	7"	12'-0 3/8"	4'-2 1/2"	2'-0"	4'-9"	2'-0 1/2"	2'-0"	2'-0"
58" x 36"	7"	14'-0 1/2"	4'-0"	2'-0"	5'-0 1/2"	2'-0"	2'-0"	2'-0"
65" x 40"	7"	16'-0 1/2"	5'-1"	2'-0"	5'-7 1/2"	2'-0"	2'-0"	2'-0"
73" x 45"	7"	17'-9 1/2"	5'-7"	2'-0"	7'-3 1/4"	2'-7 1/4"	2'-0"	2'-0"
80" x 54"	7"	20'-0 1/2"	6'-6"	2'-0"	8'-7 3/8"	2'-10 1/4"	2'-0"	2'-0"

STANDARD HEADWALL DETAILS

REYNOLDS ENGINEERING, INC. JACKSON, MISS.

SCALE: N.T.S. DATE: 3/1/89 DRAWN BY: L.V.W. CHECK BY: B.R.