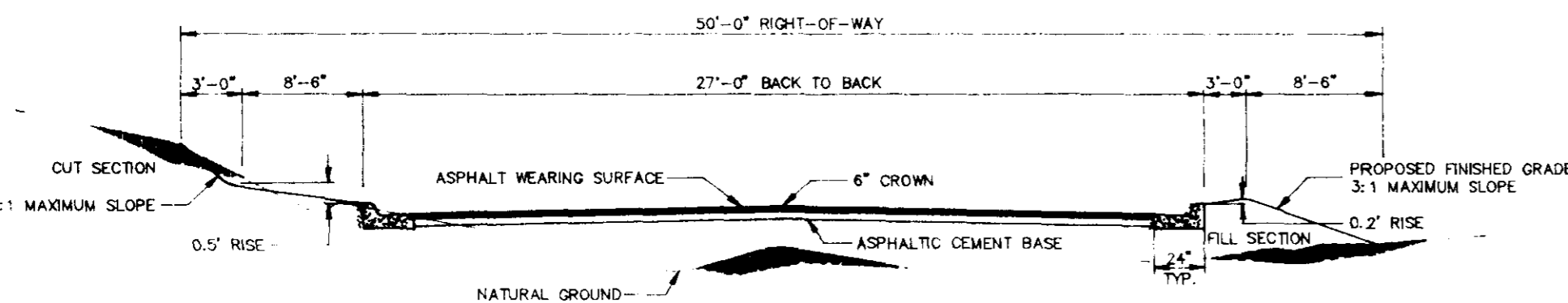
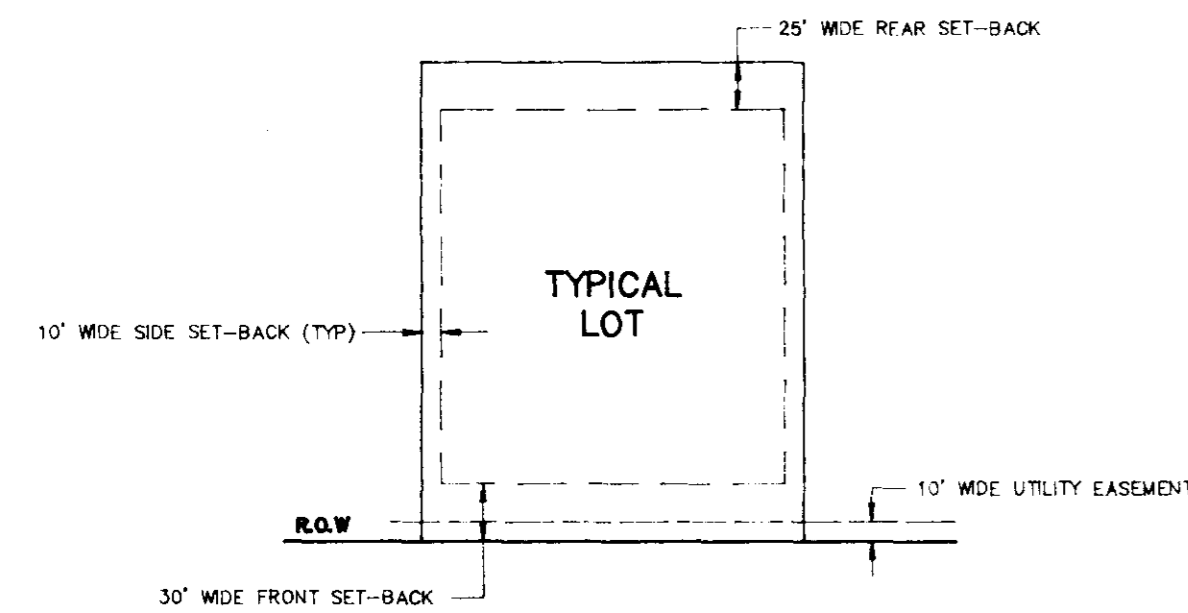
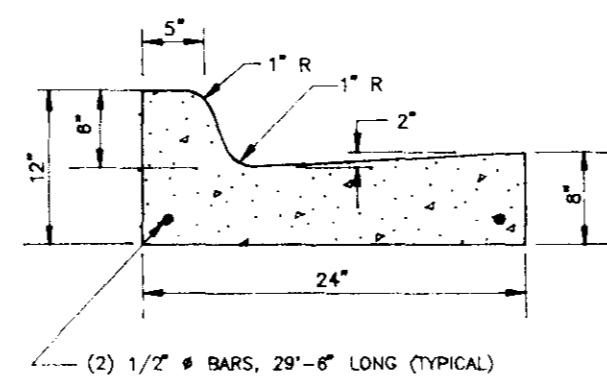


◆ BENCH MARK ELEVATION 337.75 (M.S.L.)
NAIL IN NORTH SIDE OF 20" OAK, 60"
RIGHT OF STATION 2+70 (STREET NO.3)
ON EAST TOP OF BANK OF DITCH



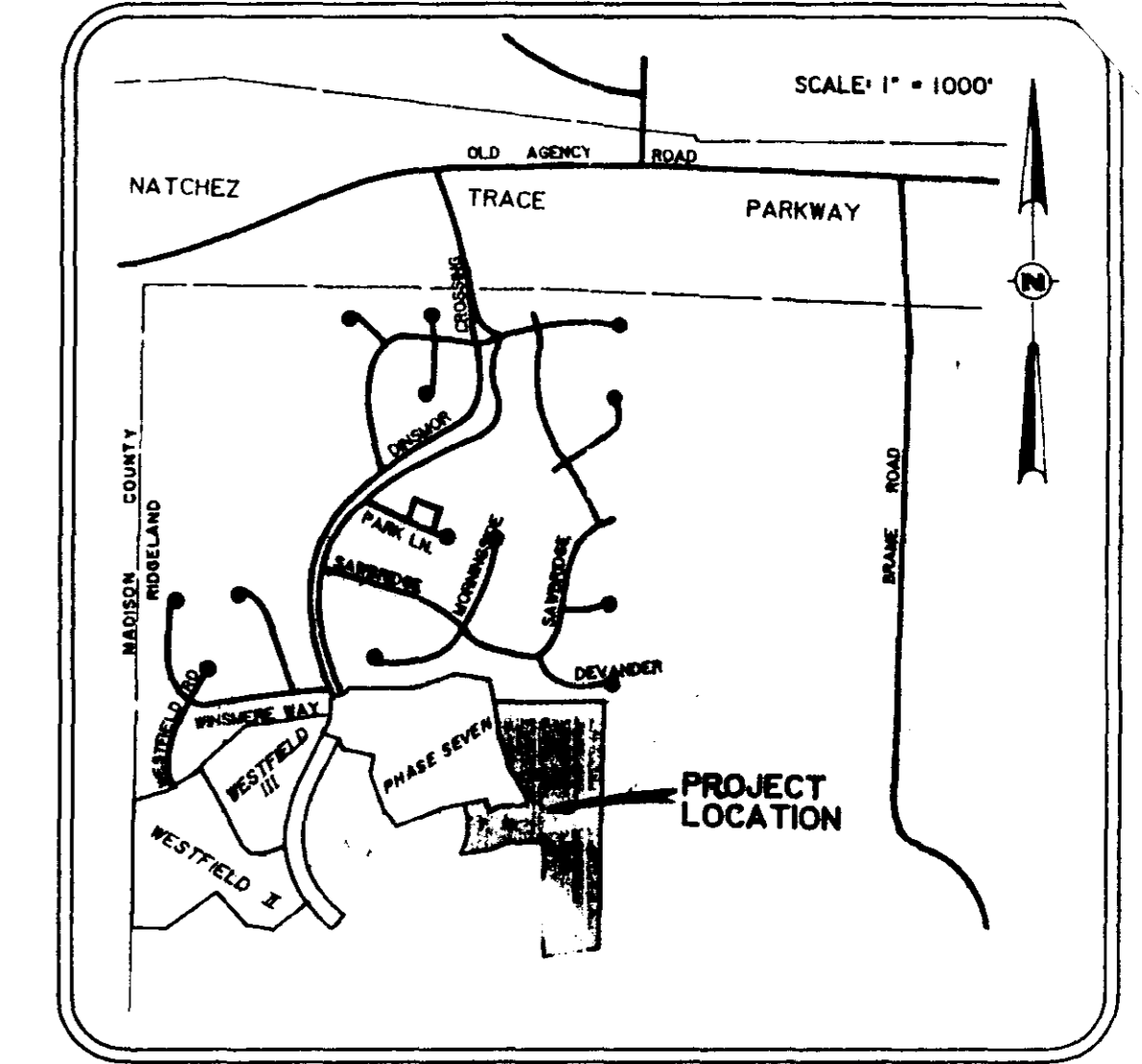
TYPICAL STREET SECTION

ALTERNATE NO. 1: 1 1/2" WEARING SURFACE WITH 5" ASPHALTIC CEMENT BASE
ALTERNATE NO. 2: 1 1/2" WEARING SURFACE WITH 4" ASPHALTIC CEMENT BASE & 6" SOIL TREATMENT (LIME)



TYPICAL 24" CURB & GUTTER

NOTES:
1. 1/2" EXPANSION JOINT REQ'D @ 30' c.c. WITH 2-3/4" DOWEL BARS, 15" LONG, REQ'D AT ALL EXPANSION JOINTS. THEY SHALL BE HELD IN PLACE BY APPROVED CHAIRS OR SUPPORTS, AND 1/2" EXPANSION MATERIALS. 1/4" CONTRACTION JOINT REQ'D @ 10' c.c.
2. ALL CURB & GUTTER AND DRIVEWAYS TO BE CONSTRUCTED OF 1:2:4 MIX CONCRETE.



VICINITY MAP

DISAPPROVED
APPROVED
APPROVED AS NOTED
REVIEWED FOR GENERAL CONFORMANCE TO THE PLANS AND SPECIFICATIONS. THE CITY OF RIDGELAND DOES NOT VERIFY THE ACCURACY OF THIS DATA AND APPROVAL DOES NOT RELIEVE THE OWNER AND/OR CONTRACTOR OF HIS RESPONSIBILITY FOR SUCH ACCURACY AND CONFORMANCE TO PLANS AND SPECIFICATIONS.
CITY OF RIDGELAND, MS
PUBLIC WORKS DEPARTMENT
Date: 2-17-92 By: *[Signature]*

SUMMARY OF LOT AREAS

LOT 271 - 16,975.69 SQ. FT.	LOT 287 - 22,228.88 SQ. FT.
LOT 272 - 16,957.19 SQ. FT.	LOT 288 - 18,460.21 SQ. FT.
LOT 273 - 18,043.89 SQ. FT.	LOT 289 - 18,939.80 SQ. FT.
LOT 274 - 19,720.40 SQ. FT.	LOT 290 - 17,397.24 SQ. FT.
LOT 275 - 16,799.74 SQ. FT.	LOT 291 - 20,652.70 SQ. FT.
LOT 276 - 14,048.32 SQ. FT.	LOT 292 - 18,137.47 SQ. FT.
LOT 277 - 14,949.86 SQ. FT.	LOT 293 - 16,218.19 SQ. FT.
LOT 278 - 20,263.72 SQ. FT.	LOT 294 - 15,963.55 SQ. FT.
LOT 279 - 27,529.59 SQ. FT.	LOT 295 - 17,473.19 SQ. FT.
LOT 280 - 13,553.98 SQ. FT.	LOT 296 - 25,562.38 SQ. FT.
LOT 281 - 13,210.29 SQ. FT.	LOT 297 - 18,901.26 SQ. FT.
LOT 282 - 22,214.11 SQ. FT.	LOT 298 - 16,107.82 SQ. FT.
LOT 283 - 21,409.61 SQ. FT.	LOT 299 - 16,464.47 SQ. FT.
LOT 284 - 16,424.35 SQ. FT.	LOT 300 - 15,882.95 SQ. FT.
LOT 285 - 19,761.91 SQ. FT.	LOT 301 - 14,655.50 SQ. FT.
LOT 286 - 18,718.10 SQ. FT.	LOT 302 - 16,822.76 SQ. FT.



NOTES:
1. THIS PROPERTY LIES WITHIN THE LIMITS ESTABLISHED FOR ZONE "C" ACCORDING TO HUD/FIA MAP NUMBER 280228 0295 B EFFECTIVE JANUARY 2, 1980.
2. THIS SURVEY IS A CLASS "B" SURVEY.

PRELIMINARY LAND DEVELOPMENT PLAN
FOR
PHASE TEN OF DINSMOR

(PARCEL CONTAINS 17.1358 ACRES OF LAND, MORE OR LESS)

PWP-00415

FIELD	REYNOLDS ENGINEERING, INC. POST OFFICE BOX 526 JACKSON, MISSISSIPPI 39205 601-362-4885	DEVELOPER: S.M.C.D.C., INC. GENERAL PARTNERSHIP 805 SOUTH WHEATLEY STREET RIDGELAND, MISSISSIPPI	LOCATION: SITUATED IN THE EAST 1/2 OF SECTION 26 TOWNSHIP 7 NORTH - RANGE 1 EAST MADISON COUNTY, MISSISSIPPI	DATE Bellewether II	REVISION	BY	DRAWN BY: P.H.W.	SHEET
DATUM							DATE: 1/29/92 SCALE: 1"=100' BOOK: B-167 PAGE: PROJECT NO.: 91034	OF