

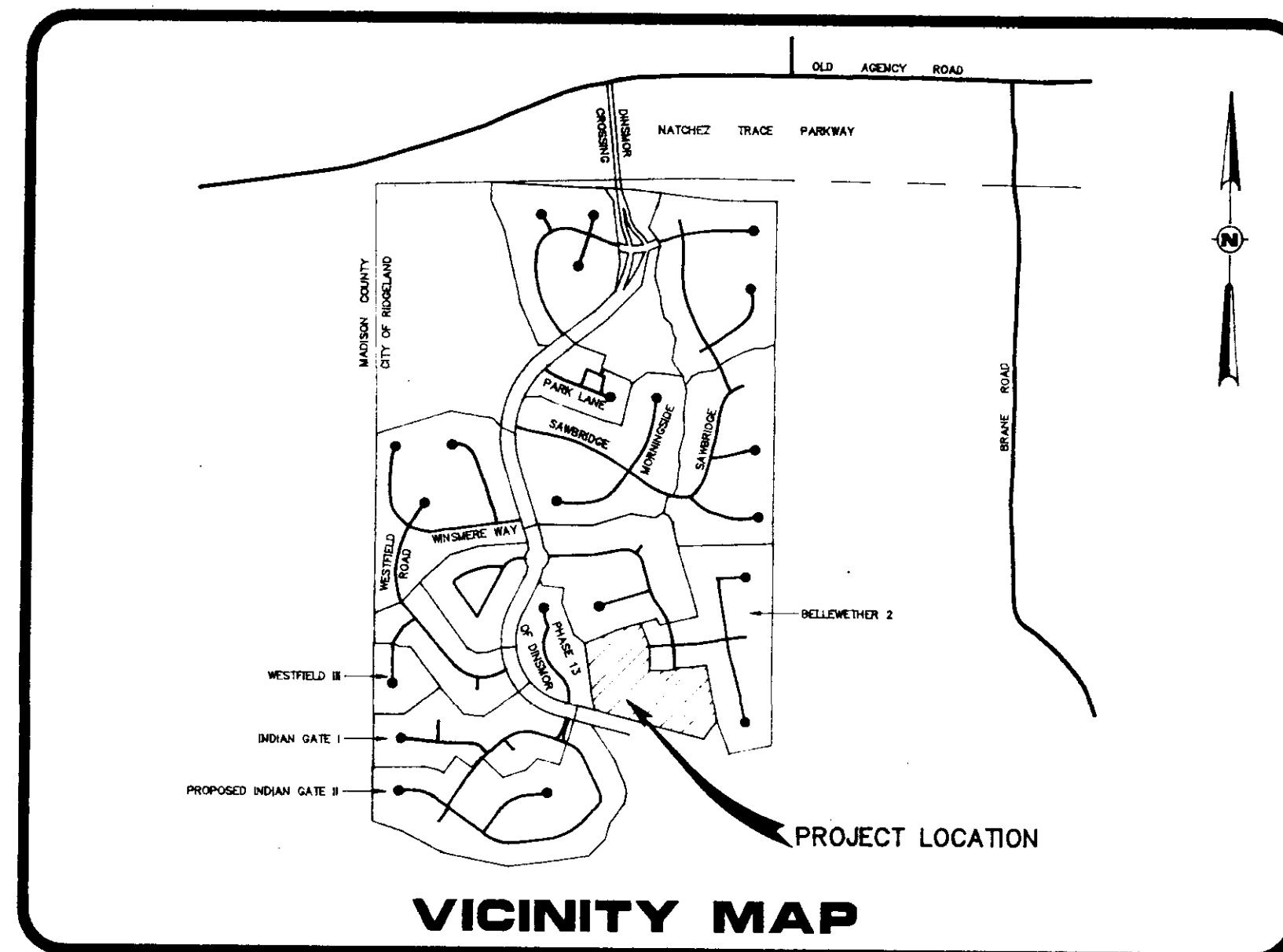
CONSTRUCTION PLANS

FOR

BELLEWETHER PART 3

(PHASE FOURTEEN OF DINSMOR)

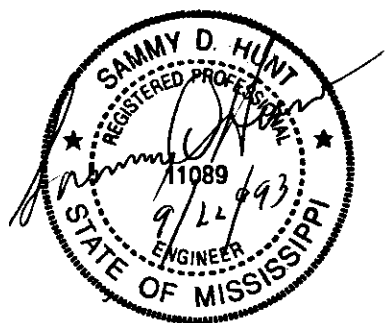
DEVELOPED BY:
S.M.C.D.C., INC. GENERAL PARTNERSHIP
 805 SOUTH WHEATLEY STREET
 RIDGELAND, MISSISSIPPI



PREPARED BY:
REYNOLDS ENGINEERING, INC.
 POST OFFICE BOX 526
 JACKSON, MISSISSIPPI 39205
 (601) 362-4886

DISAPPROVED _____
 APPROVED _____
 APPROVED AS NOTED _____
 REVIEWED FOR GENERAL CONFORMANCE TO THE PLANS AND SPECIFICATIONS. THE CITY OF RIDGELAND DOES NOT VERIFY THE ACCURACY OF THIS DATA AND APPROVAL DOES NOT RELIEVE THE OWNER AND/OR CONTRACTOR OF HIS RESPONSIBILITY FOR SUCH ACCURACY AND CONFORMANCE TO PLANS AND SPECIFICATIONS.
 CITY OF RIDGELAND, MS
 PUBLIC WORKS DEPARTMENT
 Date: 2/2/93 By: [Signature]

DRAWING INDEX	
1 - COVER SHEET 2 - GEOMETRIC LAYOUT 3 - DRAINAGE AND GRADING LAYOUT 4 - SEWER AND WATER LAYOUT 5 - PLAN & PROFILE - STREETS "A", "B" AND "C" 6 - PLAN & PROFILE - SANITARY SEWER IMPROVEMENTS AND PLAN & PROFILE - DRAINAGE IMPROVEMENTS	7 - PLAN & PROFILE - WATER LINE IMPROVEMENTS 8 - STANDARD SANITARY SEWER DETAILS 9 - STANDARD WATER DETAILS 10 - STANDARD STORM SEWER DETAILS

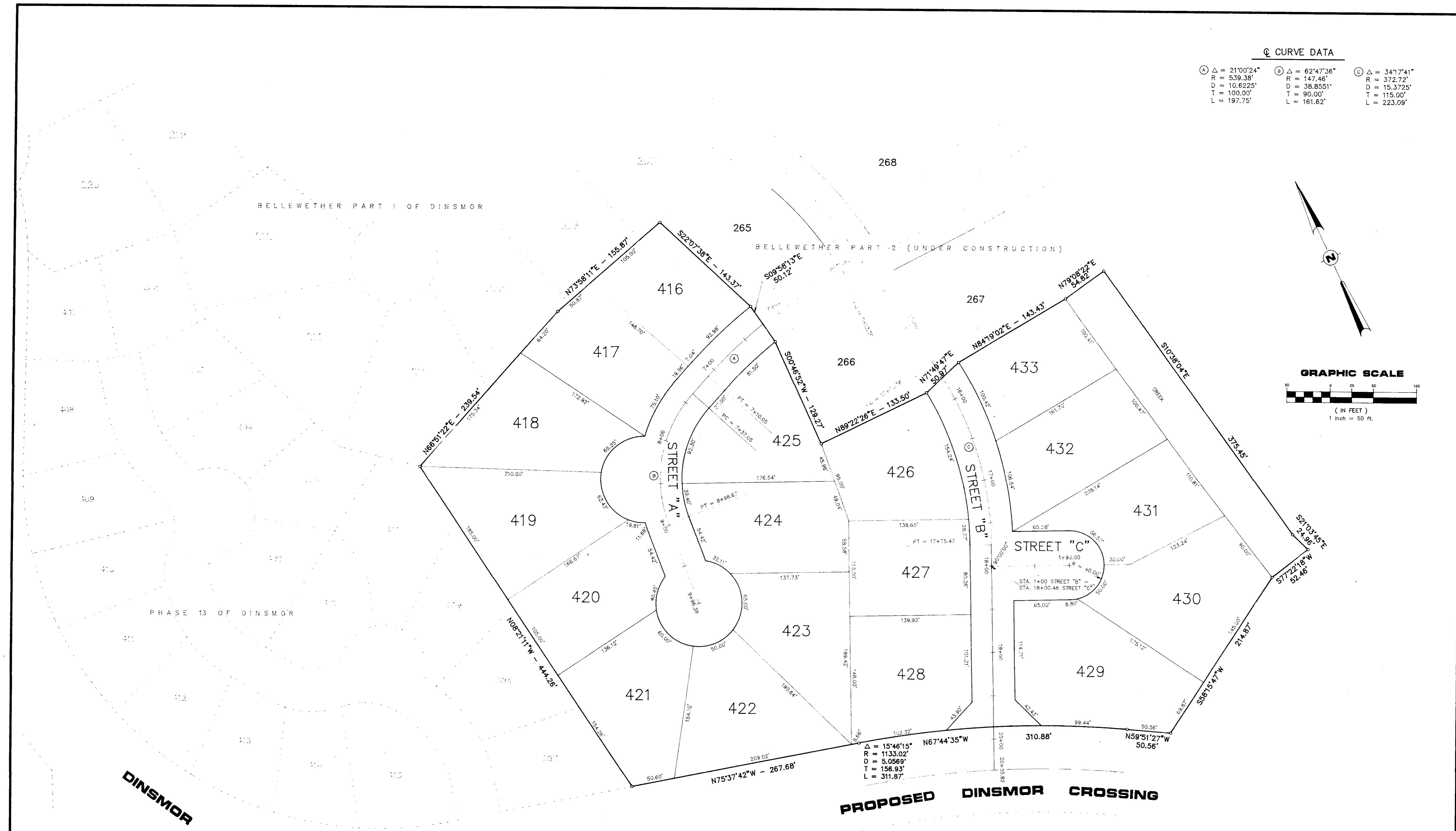
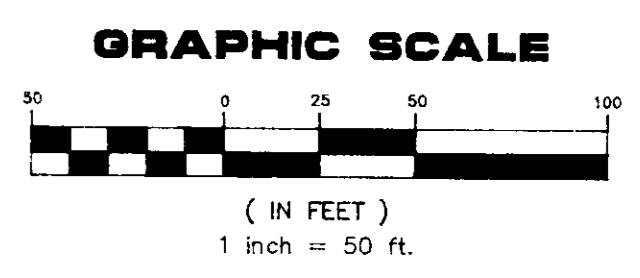
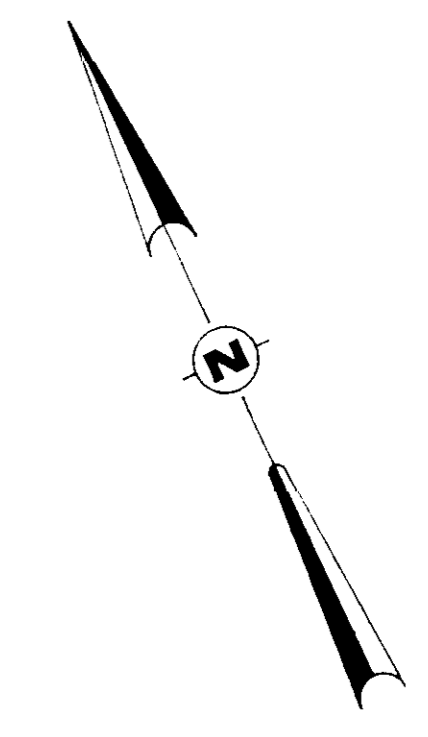


PWP-00420

DRAWING NO. D-1006-910341

Q CURVE DATA

Ⓐ Δ = 21°00'24"	Ⓑ Δ = 62°47'36"	Ⓒ Δ = 34°17'41"
R = 539.38'	R = 147.48'	R = 372.72'
D = 10.6225"	D = 38.8551"	D = 15.3725"
T = 100.00'	T = 90.00'	T = 115.00'
L = 197.75'	L = 161.62'	L = 223.09'



CROSSING

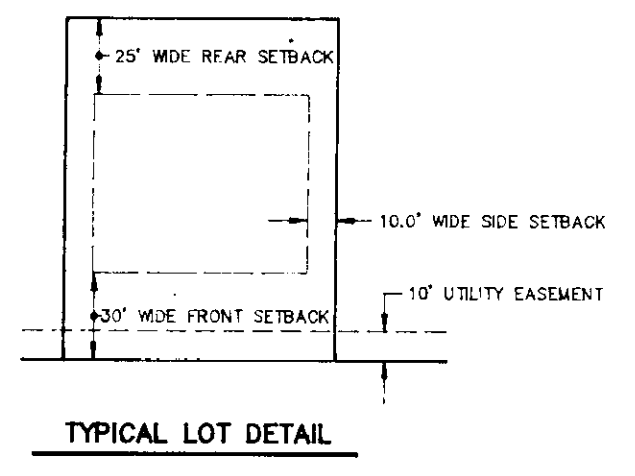
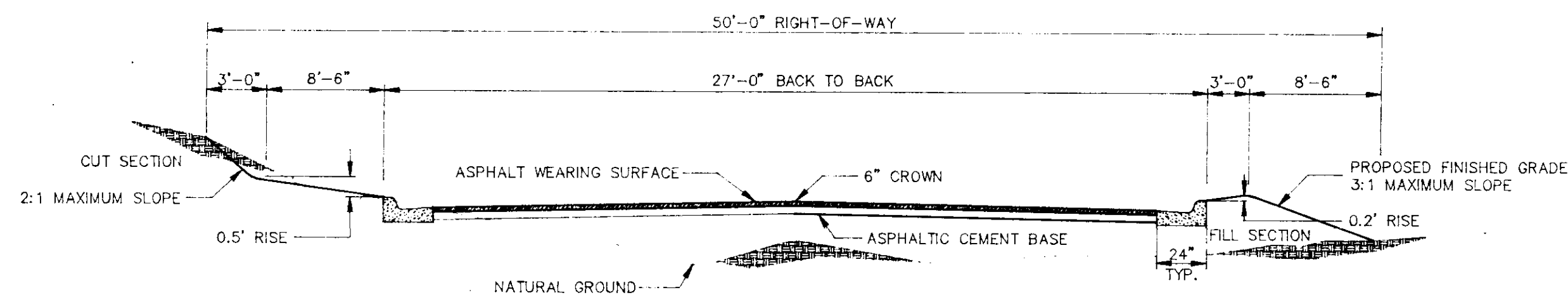
PROPOSED DINSMOR CROSSING

**GEOMETRIC LAYOUT
FOR
BELLEWETHER PART III
(PHASE 14 OF DINSMOR)**

(PARCEL CONTAINS 8.300 ACRES OF LAND, MORE OR LESS)

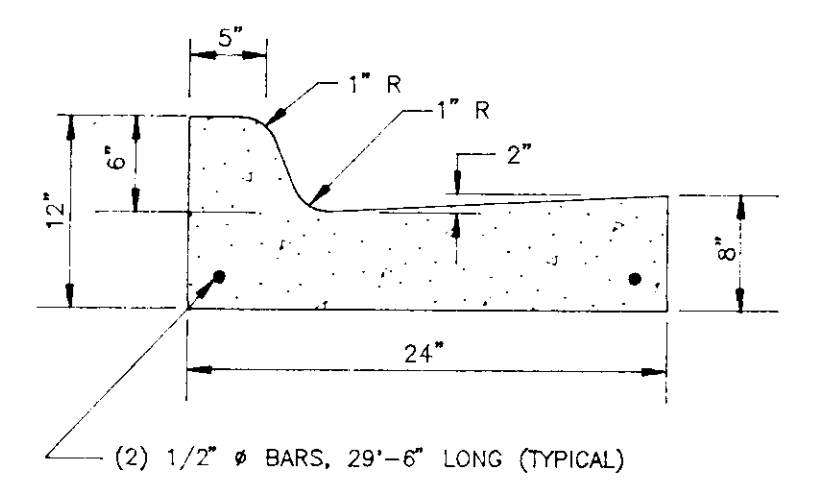
DRAWING NO. 81-0344-2

FIELD	REYNOLDS ENGINEERING, INC.		CLIENT	LOCATION	DATE	REVISION	BY	DRAWN BY: H.H.A.	SHEET 2 OF 10
	POST OFFICE BOX 526	JACKSON, MISSISSIPPI 39205	DEVELOPED BY S.M.C.D.C., INC. GENERAL PARTNERSHIP 805 SOUTH WHEATLEY STREET RIDGELAND, MISSISSIPPI	SITUATED IN THE EAST 1/2 OF SECTION 28 TOWNSHIP 7 NORTH - RANGE 1 EAST MADISON COUNTY, MISSISSIPPI	9-20-93	SHEET NO.	H.H.A.	DATE: 6/24/93	
DATUM	601-362-4885							SCALE: 1"=50'	
								BOOK: PAGE:	
								PROJECT NO.: 91-034	



Q CURVE DATA

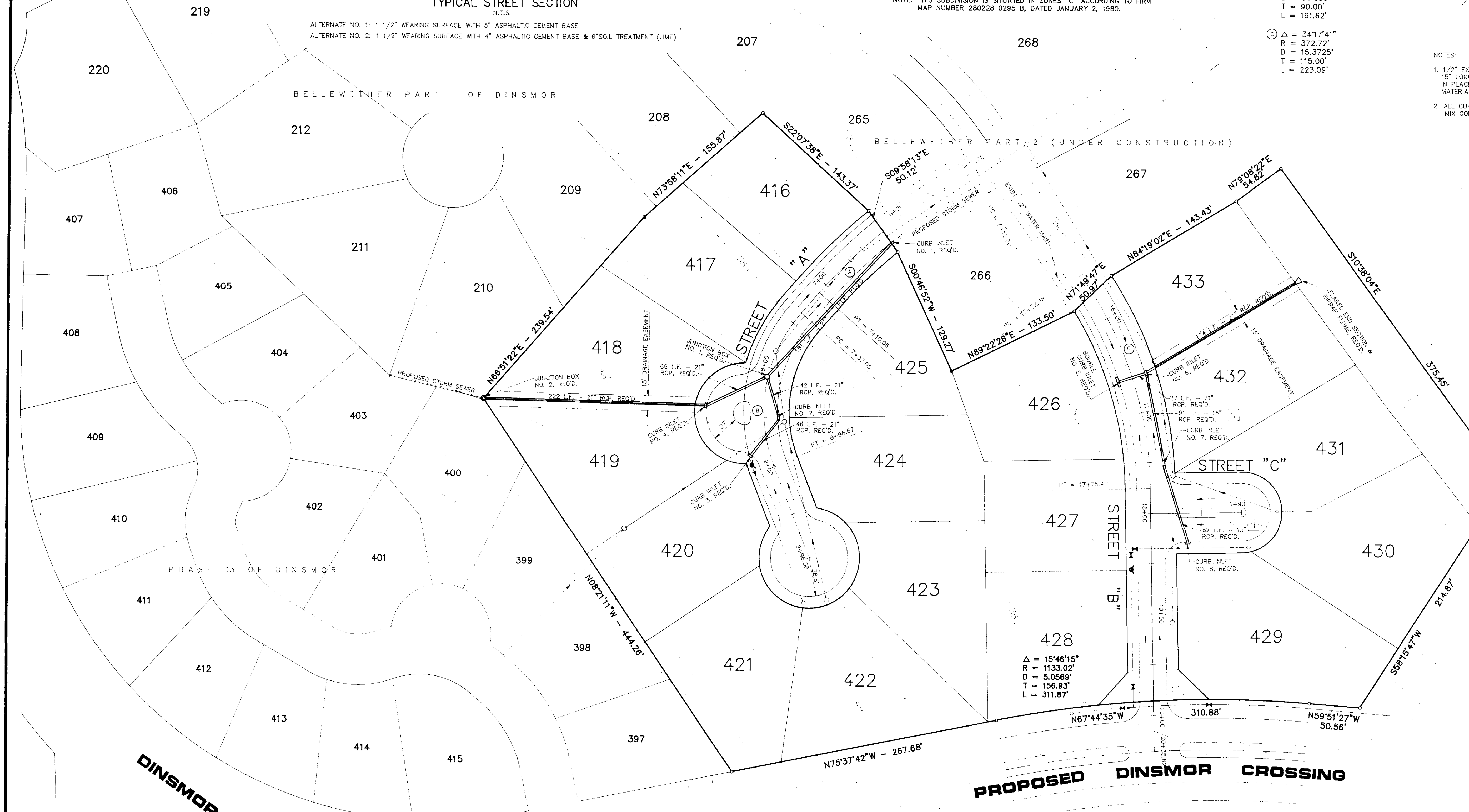
- Ⓐ Δ = 21°00'24"
R = 539.38'
D = 10.6225'
T = 100.00'
L = 197.75'
- Ⓑ Δ = 62°47'36"
R = 147.46'
D = 38.8551'
T = 90.00'
L = 161.62'
- Ⓒ Δ = 34°17'41"
R = 372.72'
D = 15.3725'
T = 115.00'
L = 223.09'

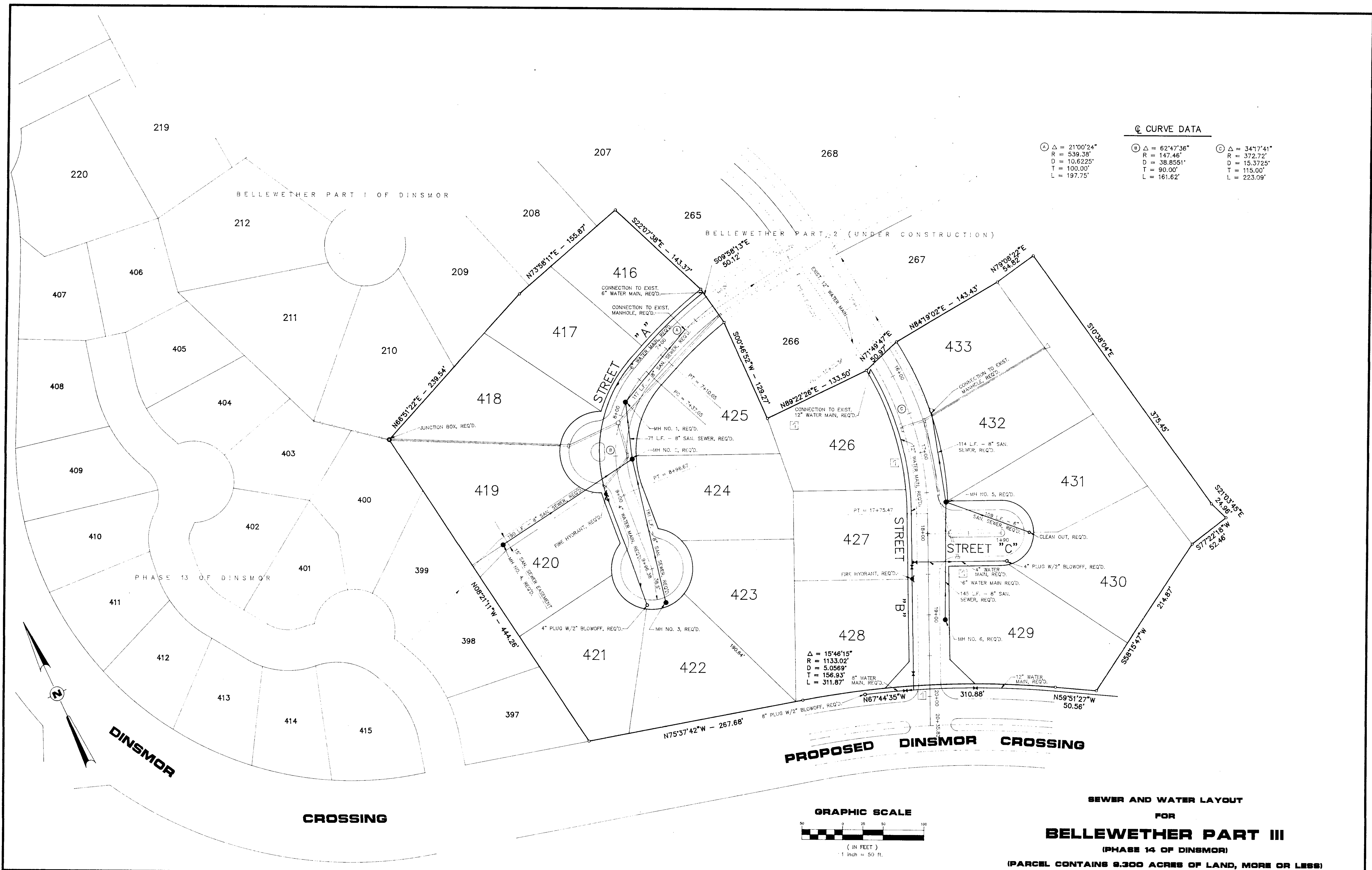


- NOTES:
- 1/2" EXPANSION JOINT REQ'D. @ 30' c.c. WITH 2-3/4" DOWEL BARS, 15' LONG, REQ'D. AT ALL EXPANSION JOINTS. THEY SHALL BE HELD IN PLACE BY APPROVED CHAIRS OR SUPPORTS, AND 1/2" EXPANSION MATERIALS. 1/4" CONTRACTION JOINT REQ'D. @ 10' c.c.
 - ALL CURB & GUTTER AND DRIVEWAYS TO BE CONSTRUCTED OF 1:2:4 MIX CONCRETE.

LOT SUMMARY

LOT 416	14,743.34 SQ. FT.
LOT 417	16,530.89 SQ. FT.
LOT 418	19,033.13 SQ. FT.
LOT 419	20,584.80 SQ. FT.
LOT 420	15,896.78 SQ. FT.
LOT 421	18,699.58 SQ. FT.
LOT 422	19,370.63 SQ. FT.
LOT 423	17,412.26 SQ. FT.
LOT 424	18,185.09 SQ. FT.
LOT 425	17,436.90 SQ. FT.
LOT 426	17,453.88 SQ. FT.
LOT 427	15,379.08 SQ. FT.
LOT 428	18,883.80 SQ. FT.
LOT 429	24,104.31 SQ. FT.
LOT 430	22,169.06 SQ. FT.
LOT 431	18,216.80 SQ. FT.
LOT 432	18,234.66 SQ. FT.
LOT 433	15,043.43 SQ. FT.

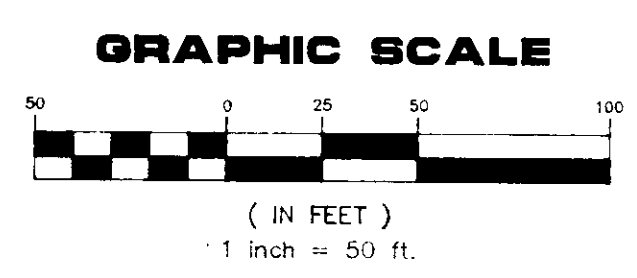




☉ CURVE DATA

Ⓐ Δ = 21°00'24"	Ⓑ Δ = 62°47'36"	Ⓒ Δ = 34°17'41"
R = 539.38'	R = 147.46'	R = 372.72'
D = 10.6225'	D = 38.8551'	D = 15.3725'
T = 100.00'	T = 90.00'	T = 115.00'
L = 197.75'	L = 161.62'	L = 223.09'

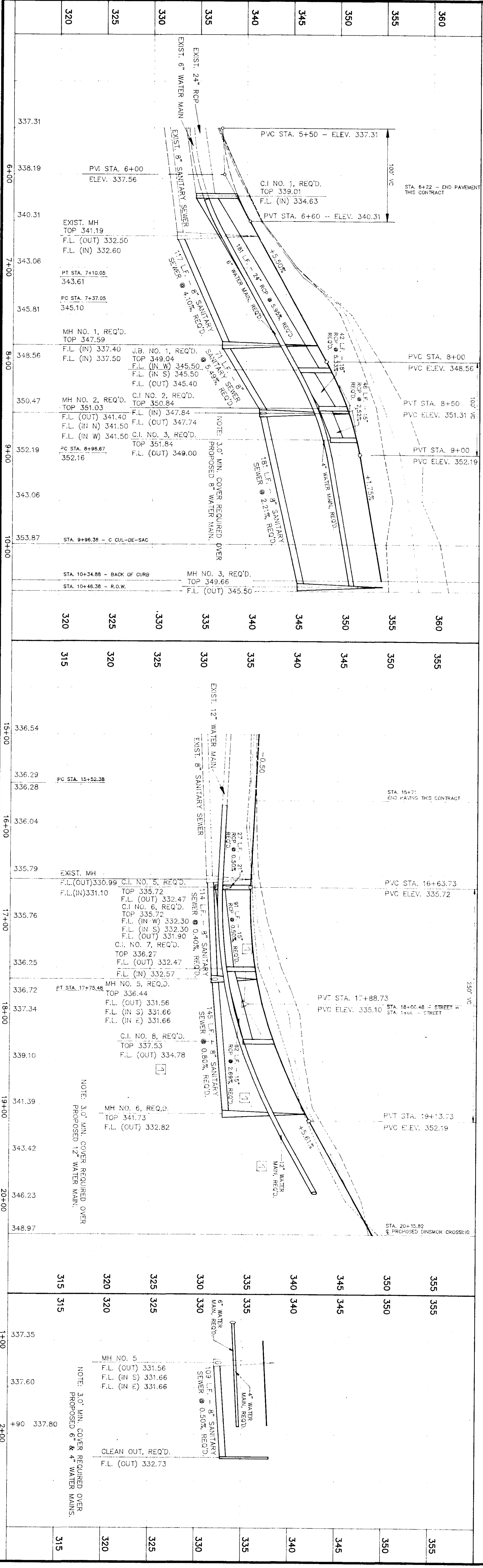
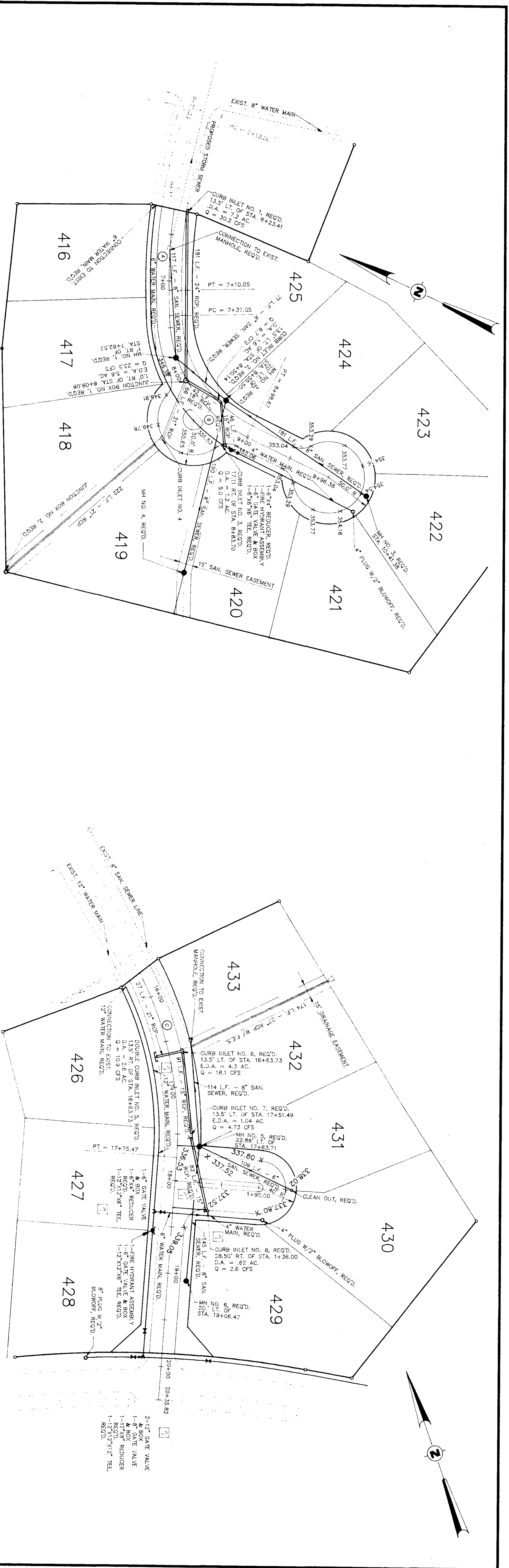
Δ = 15°46'15"
 R = 1133.02'
 D = 5.0569"
 T = 156.93'
 L = 311.87'



SEWER AND WATER LAYOUT
 FOR
BELLEWETHER PART III
 (PHASE 14 OF DINSMOR)
 (PARCEL CONTAINS 8.300 ACRES OF LAND, MORE OR LESS)

DRAWING NO. D:\DWG\91034143

FIELD	REYNOLDS ENGINEERING, INC. POST OFFICE BOX 526 JACKSON, MISSISSIPPI 39205 601-362-4885	CLIENT	DEVELOPED BY S.M.C.D.C., INC. GENERAL PARTNERSHIP 805 SOUTH WHEATLEY STREET RIDGELAND, MISSISSIPPI	LOCATION	SITUATED IN THE EAST 1/2 OF SECTION 26 TOWNSHIP 7 NORTH - RANGE 1 EAST MADISON COUNTY, MISSISSIPPI	DATE	REVISION	BY	DRAWN BY:	SHEET 4 OF 10
DATUM		9-20-93		[1] WATER LINE		H.H.A.	H.H.A.	DATE: 6/24/93 SCALE: 1"=50' BOOK: PAGE: PROJECT NO.: 91-034		



FIELD	STATION	DESCRIPTION	FIELD	STATION	DESCRIPTION
360	6+00	PVC STA. 6+00 - ELEV. 337.31	360	14+00	EXIST. 12\"/>
355	7+00	EXIST. MH TOP 341.19	355	15+00	PC STA. 15+52.38
350	8+00	PVC STA. 8+00 - ELEV. 348.56	350	16+00	PVC STA. 16+63.73
345	9+00	PVC STA. 9+00 - ELEV. 352.19	345	17+00	EXIST. MH TOP 330.99
340	10+00	STA. 9+96.38 - C CUL-DE-SAC	340	18+00	PVC STA. 17+88.73
335	11+00	STA. 10+34.88 - BACK OF CURB	335	19+00	PVC STA. 19+37.73
330	12+00	STA. 10+46.38 - R.O.W.	330	20+00	STA. 20+35.82
325	13+00		325	21+00	
320	14+00		320	22+00	
315	15+00		315	23+00	

REYNOLDS ENGINEERING, INC.
 POST OFFICE BOX 526
 JACKSON, MISSISSIPPI 39205
 601-982-4885

DEVELOPED BY
S.M.C.D.C., INC. GENERAL PARTNERSHIP
808 SOUTH WHEATLEY STREET
RIDGELAND, MISSISSIPPI

SITUATED IN THE
EAST 1/2 OF SECTION 28
TOWNSHIP 7 NORTH - RANGE 1 EAST
MADISON COUNTY, MISSISSIPPI

DATE	REVISION	BY	DRAWN BY	SHEET
9-20-93	1 R.C.P. SIZE	H.H.A.	H.H.A.	5
9-20-93	2 WATER LINE	H.H.A.	H.H.A.	OF
				10

FIELD

REYNOLDS ENGINEERING, INC.

POST OFFICE BOX 526 JACKSON, MISSISSIPPI 39205

601-982-4885

PROJECT

DEVELOPED BY S.M.C.C., INC. GENERAL PARTNERSHIP
808 SOUTH WHEATLEY STREET
RIDGELAND, MISSISSIPPI

LOCATION

SITUATED IN THE EAST 1/2 OF SECTION 28
TOWNSHIP 7 NORTH - RANGE 1 EAST
MADISON COUNTY, MISSISSIPPI

DATE: 9-20-93

REVISION: 1 WATER LINE

BY: H.H.A.

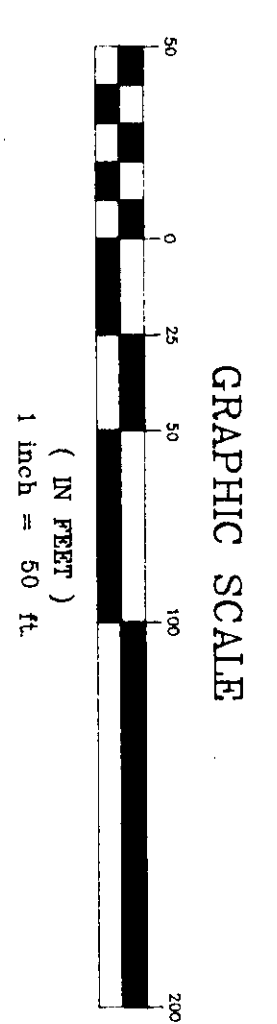
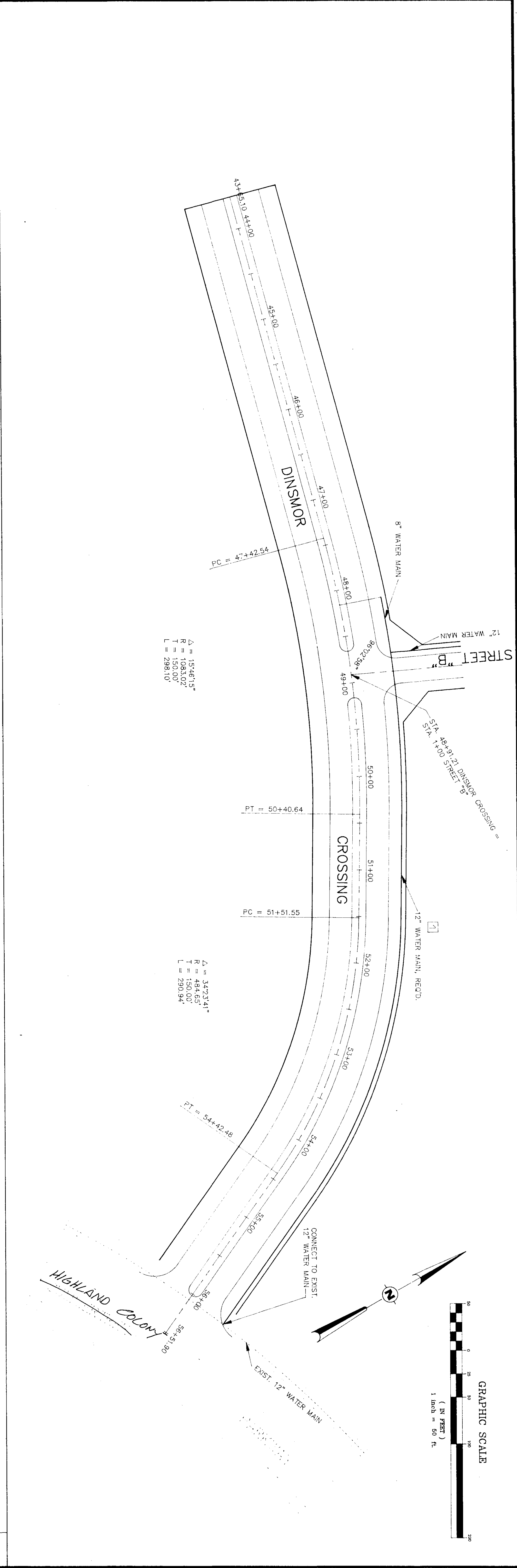
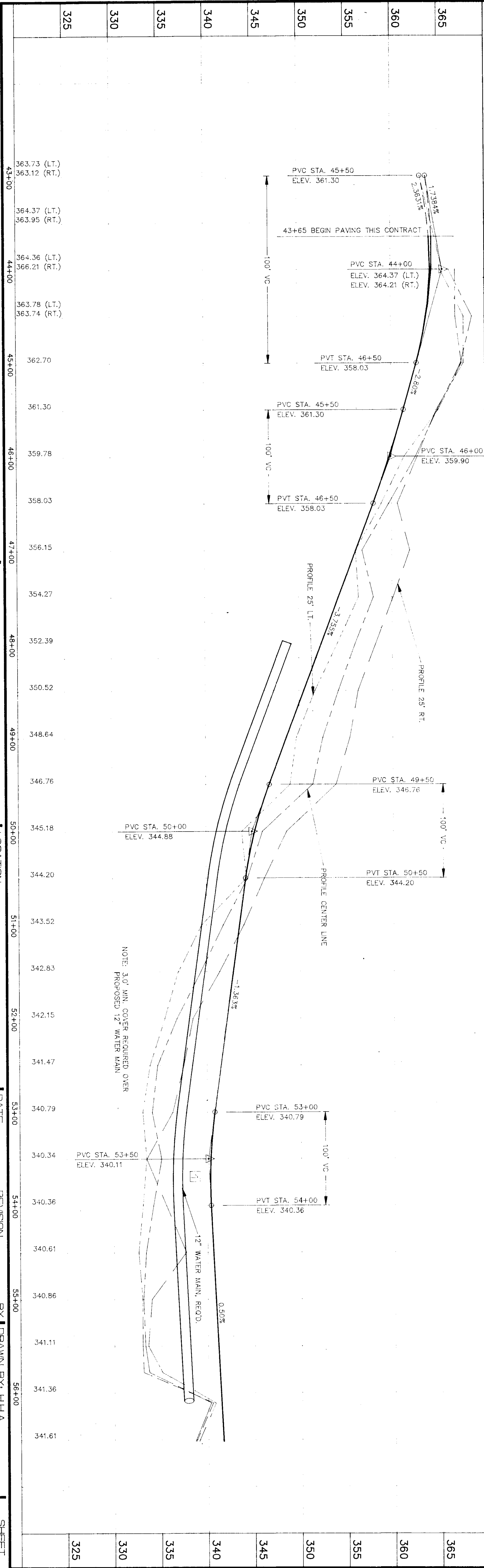
DATE: 9-16-92

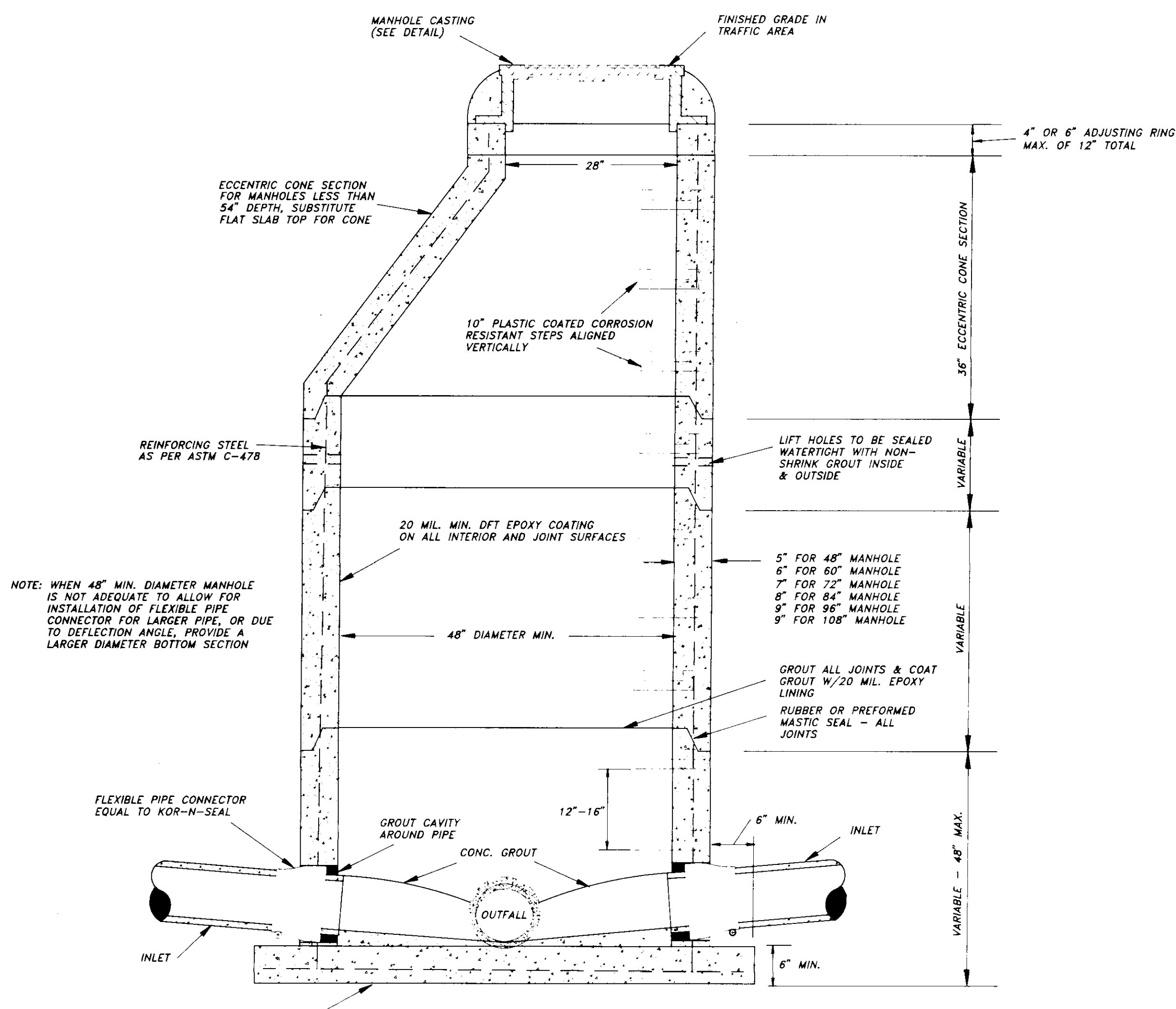
HORIZ. SCALE: 1" = 50'

BOOK: PAGE:

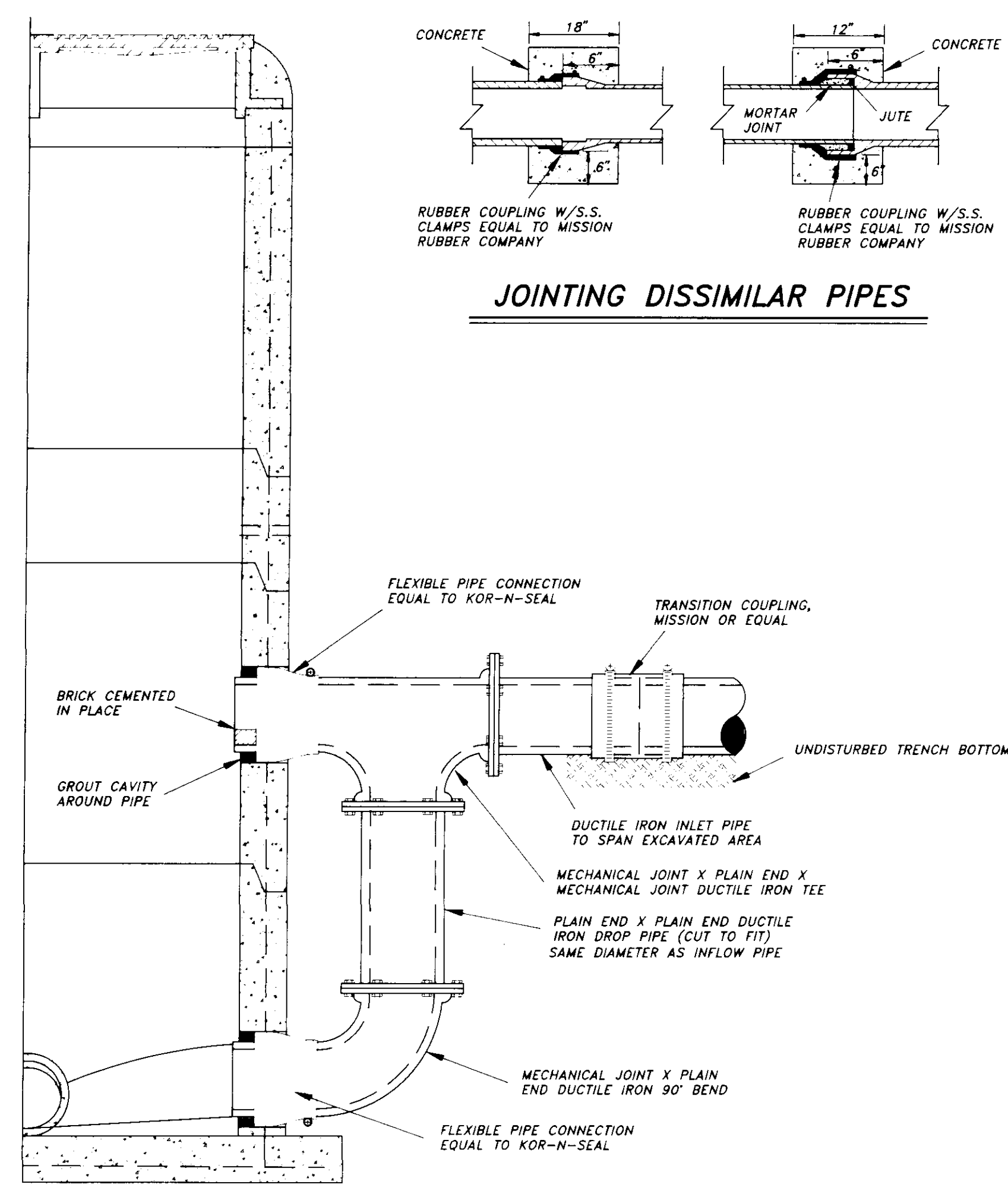
PROJECT NO.: 91-034

SHEET 7 OF 10

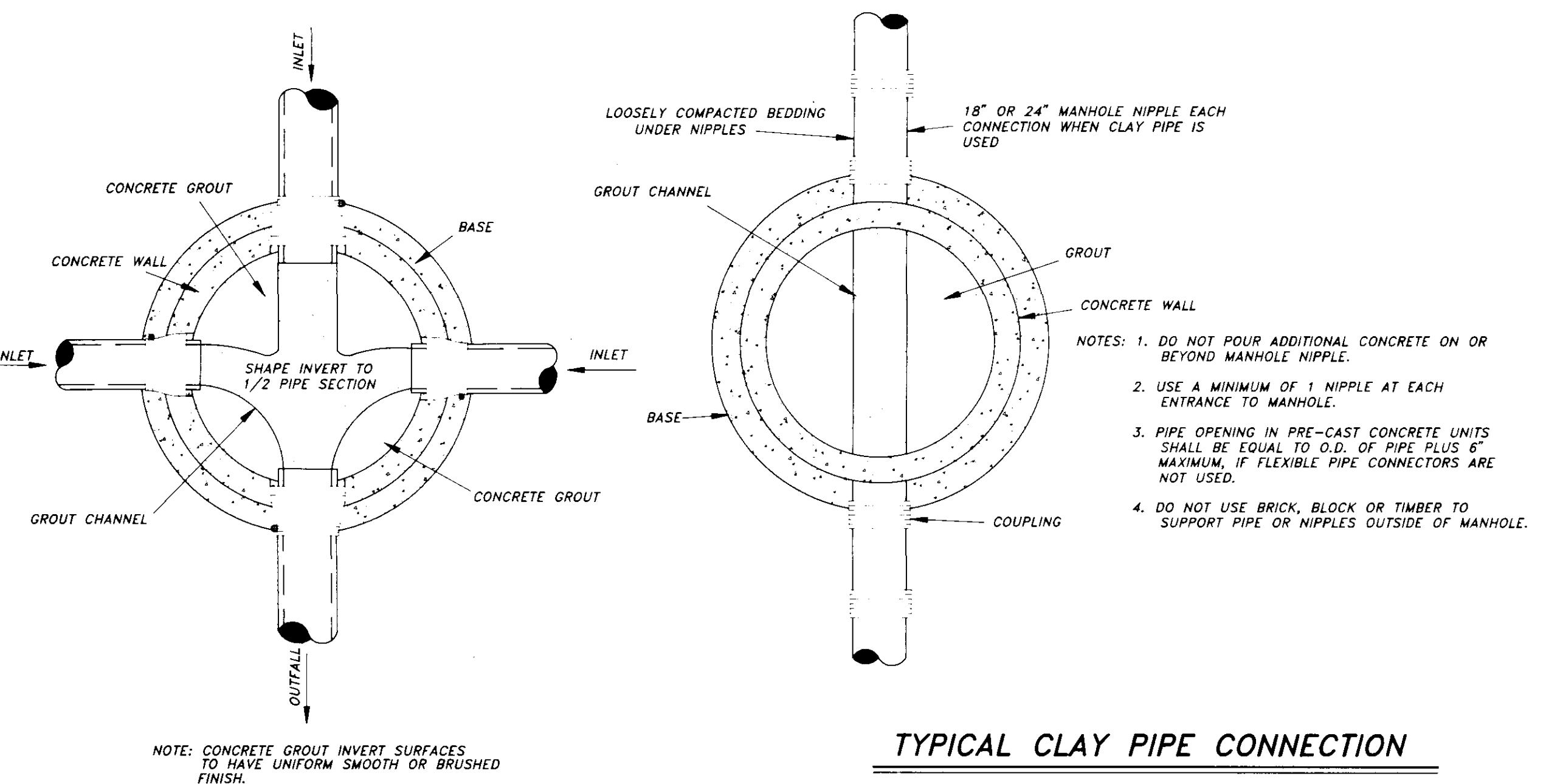




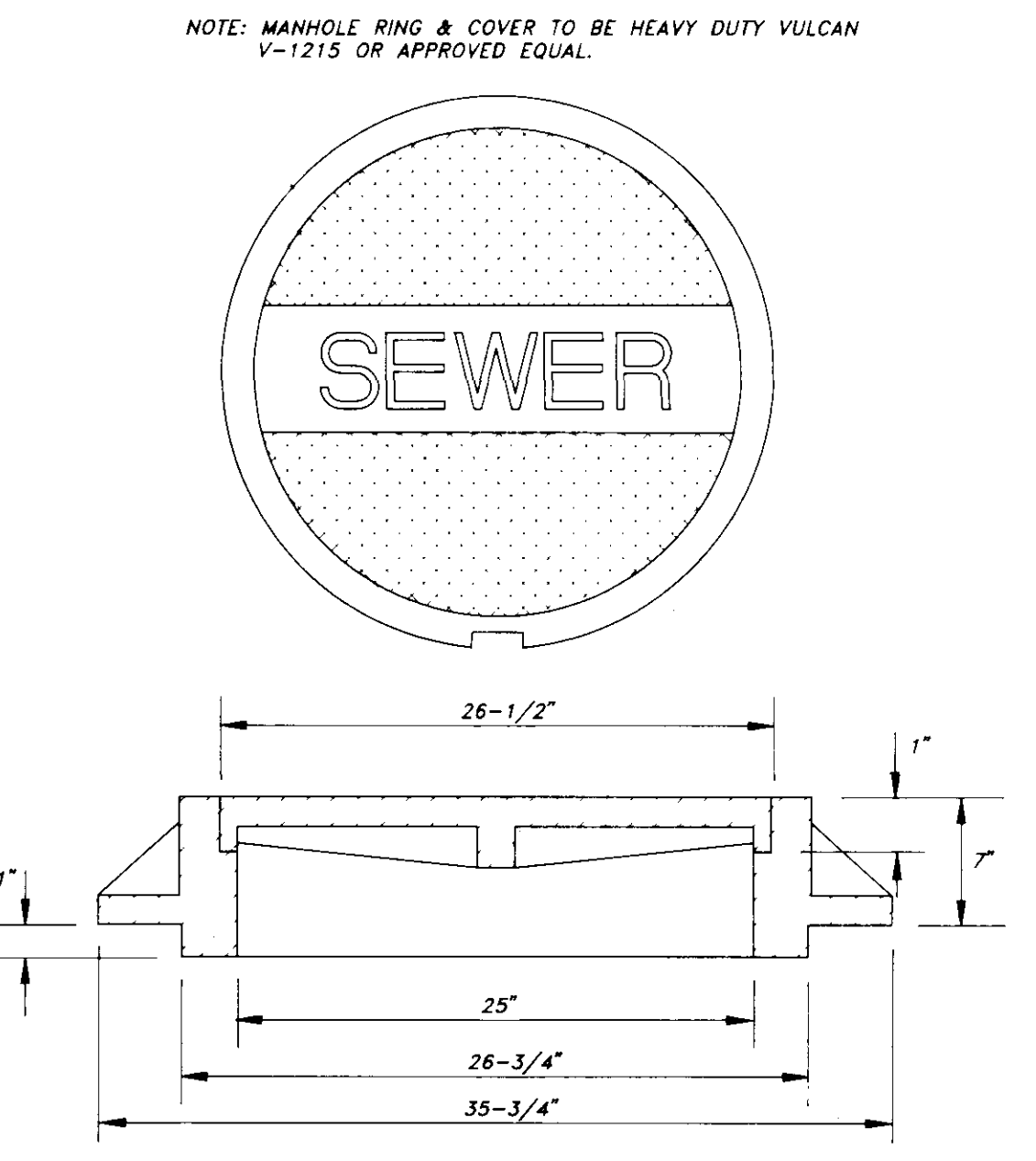
SECTION PRECAST CONCRETE MANHOLE



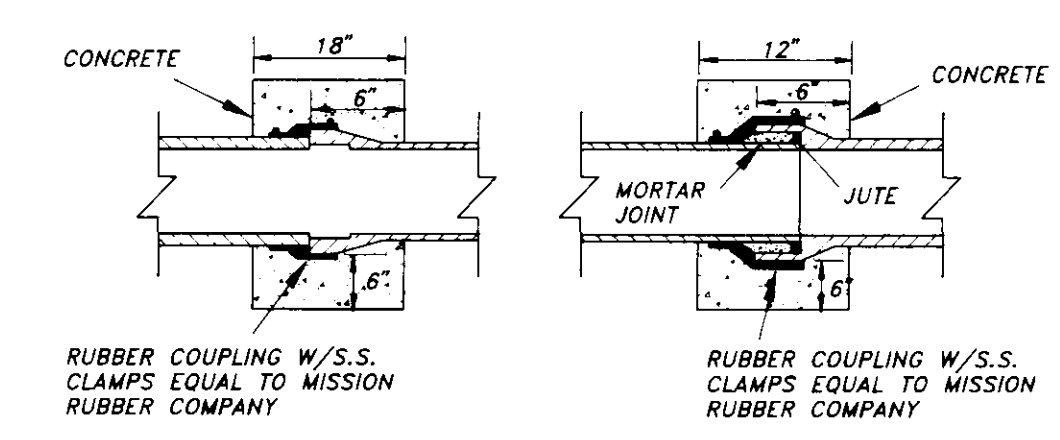
SECTION PRECAST CONCRETE MANHOLE WITH DROP CONNECTION



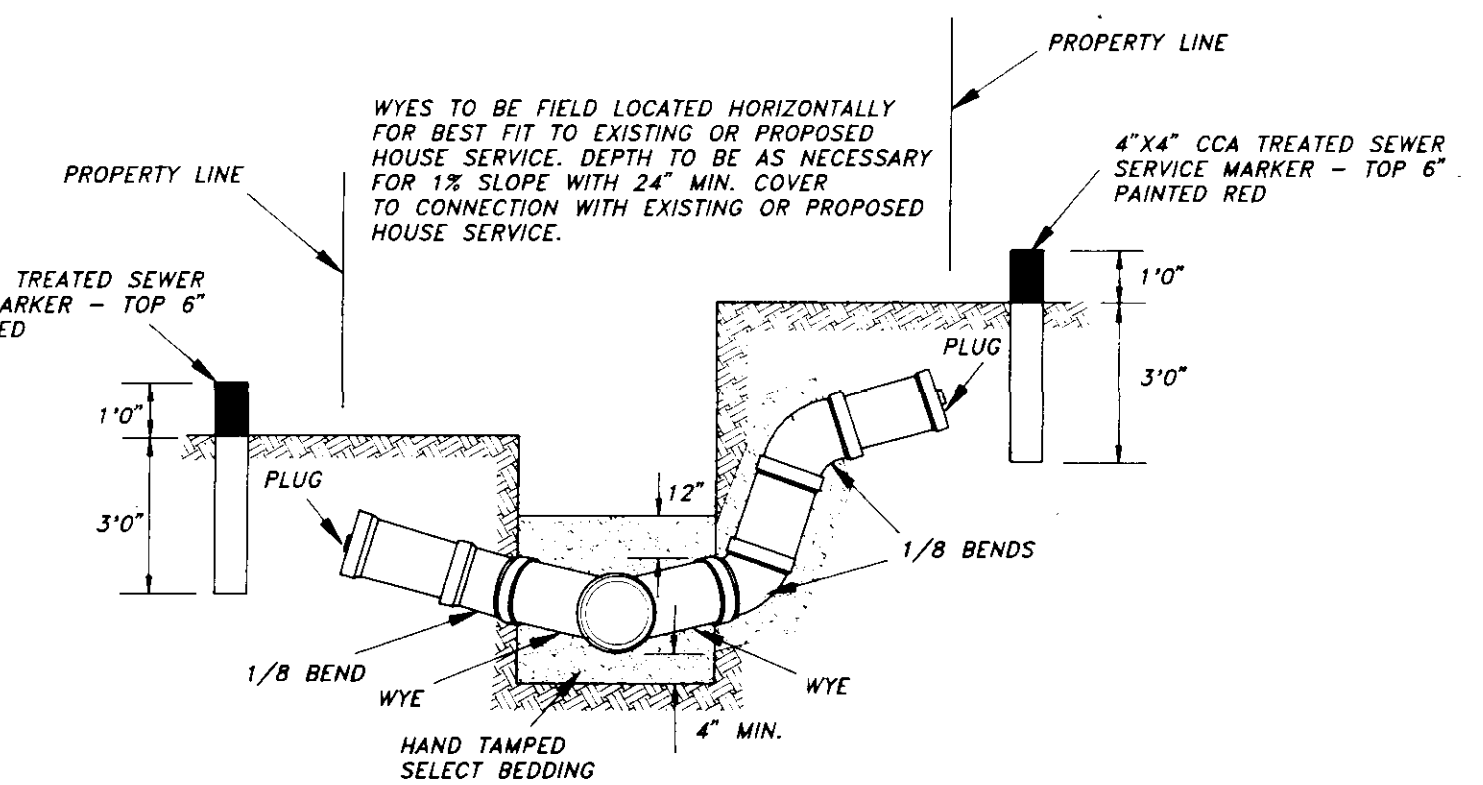
TYPICAL CLAY PIPE CONNECTION TO MANHOLE



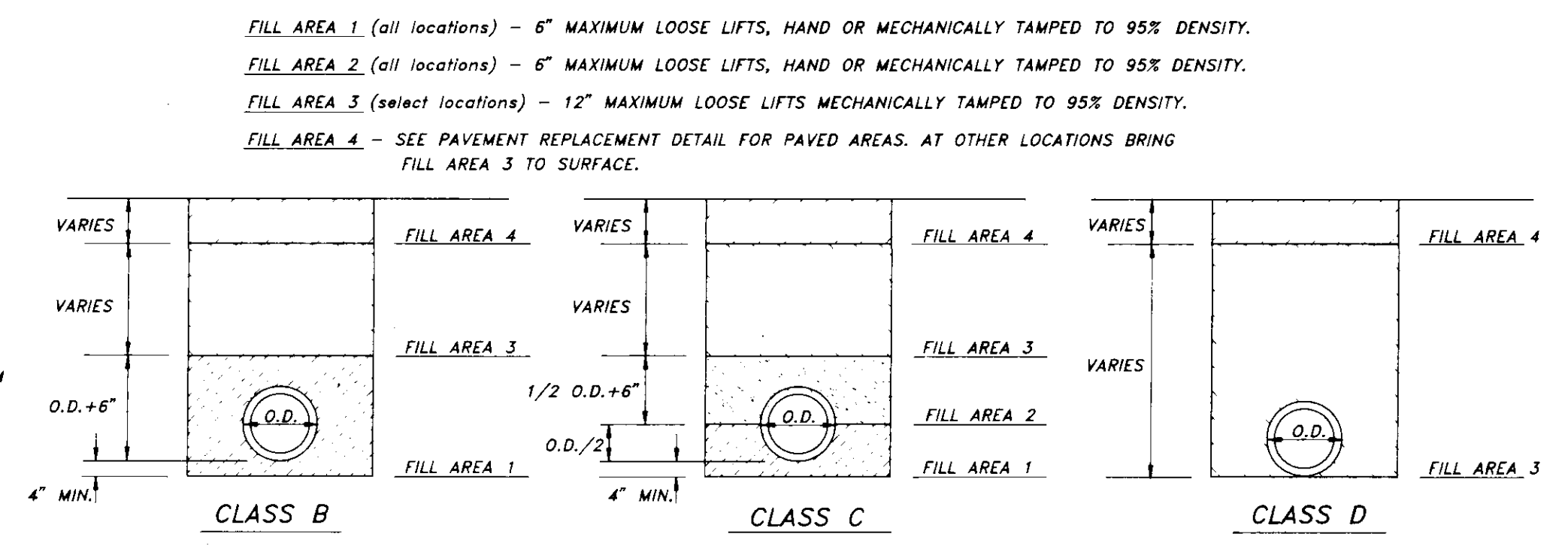
MANHOLE CASTING DETAILS



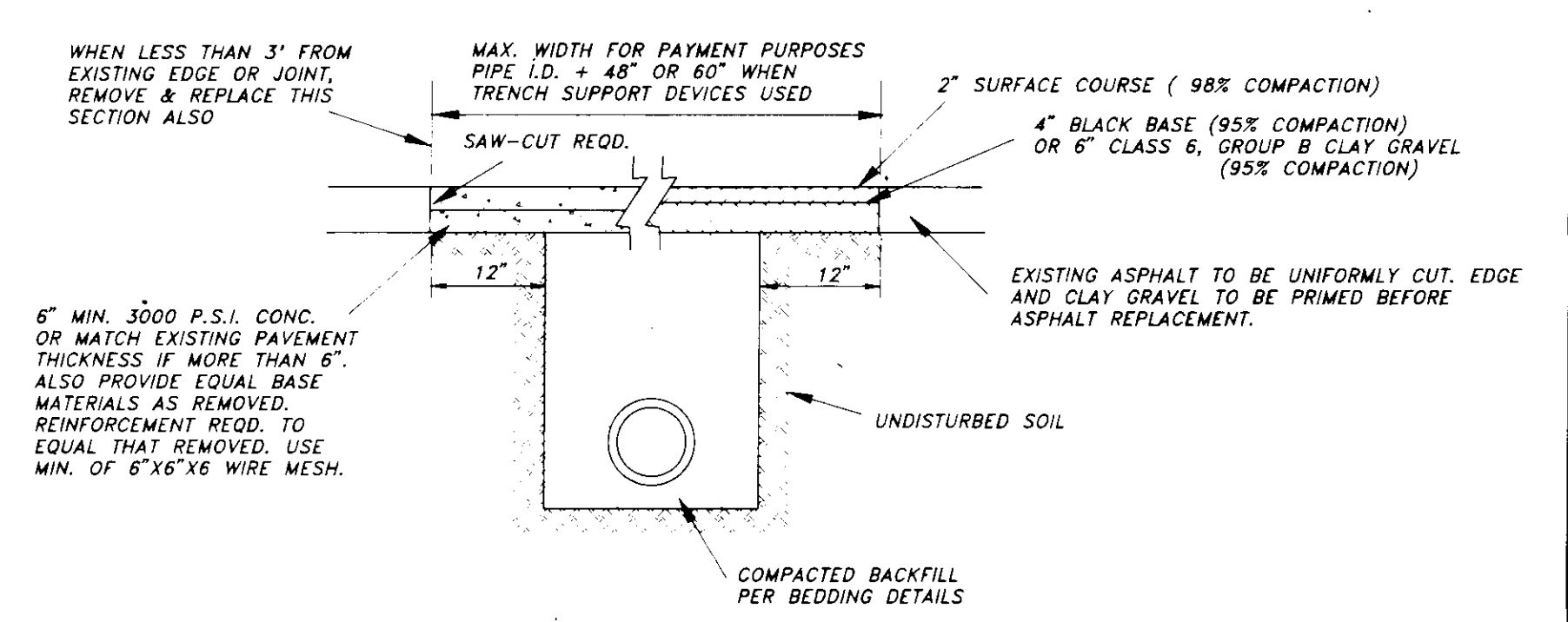
JOINTING DISSIMILAR PIPES



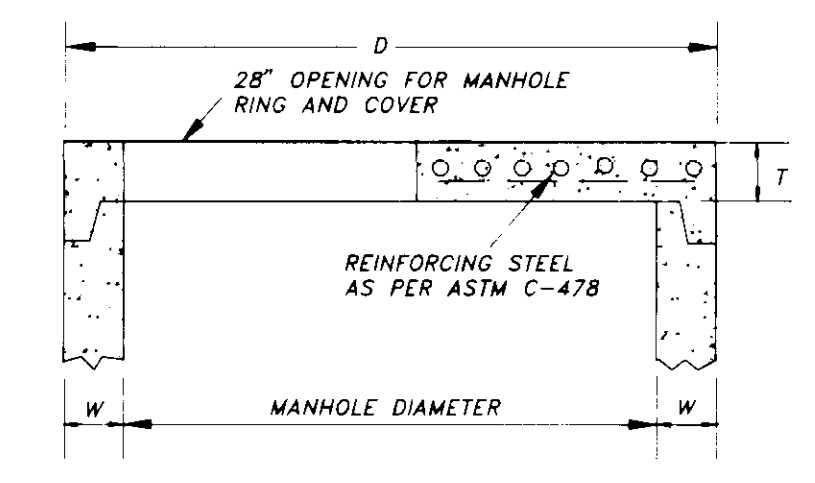
TYPICAL SERVICE CONNECTIONS



BEDDING / BACKFILLING DETAILS

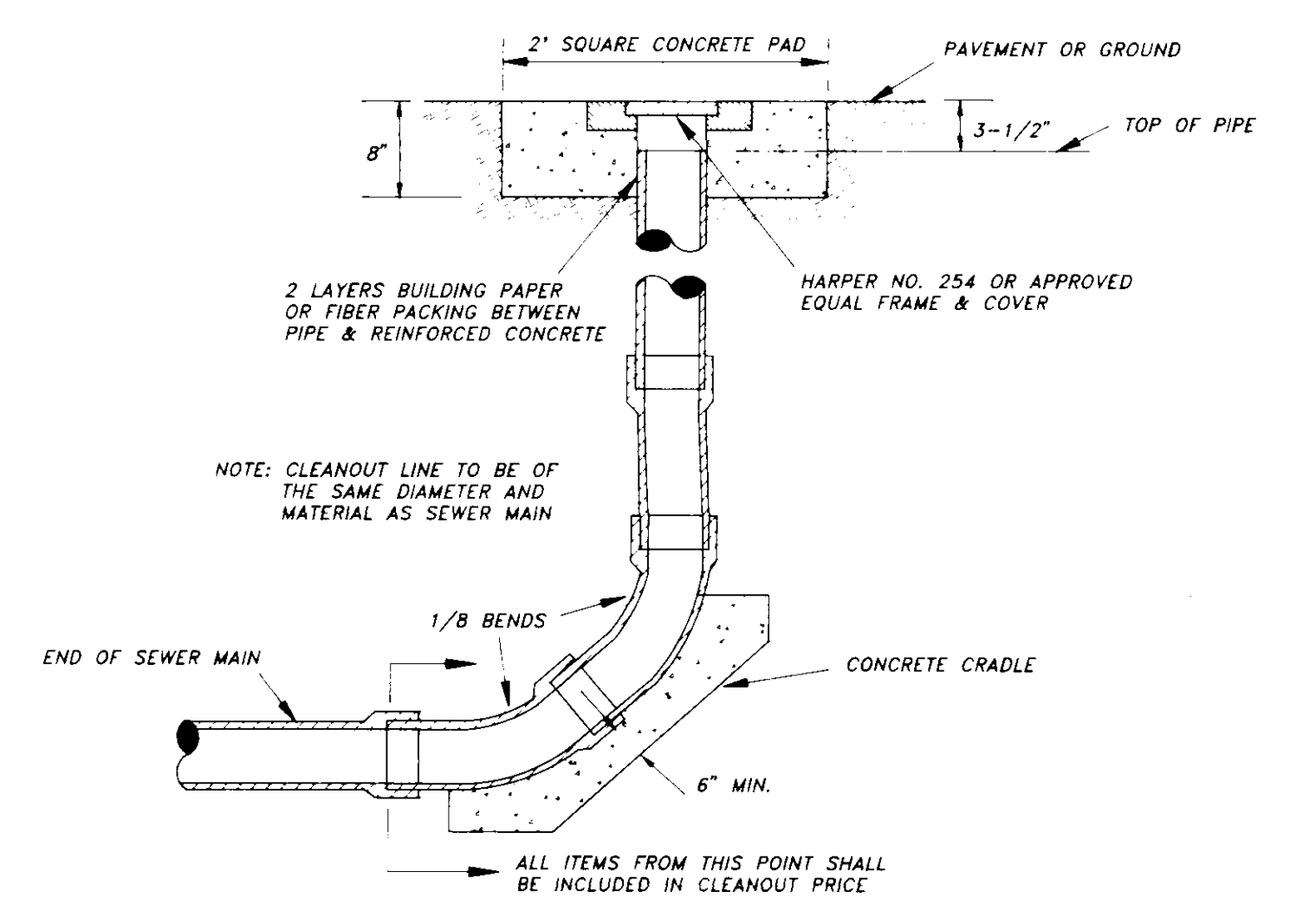


REMOVAL & REPLACEMENT OF EXISTING PAVEMENT

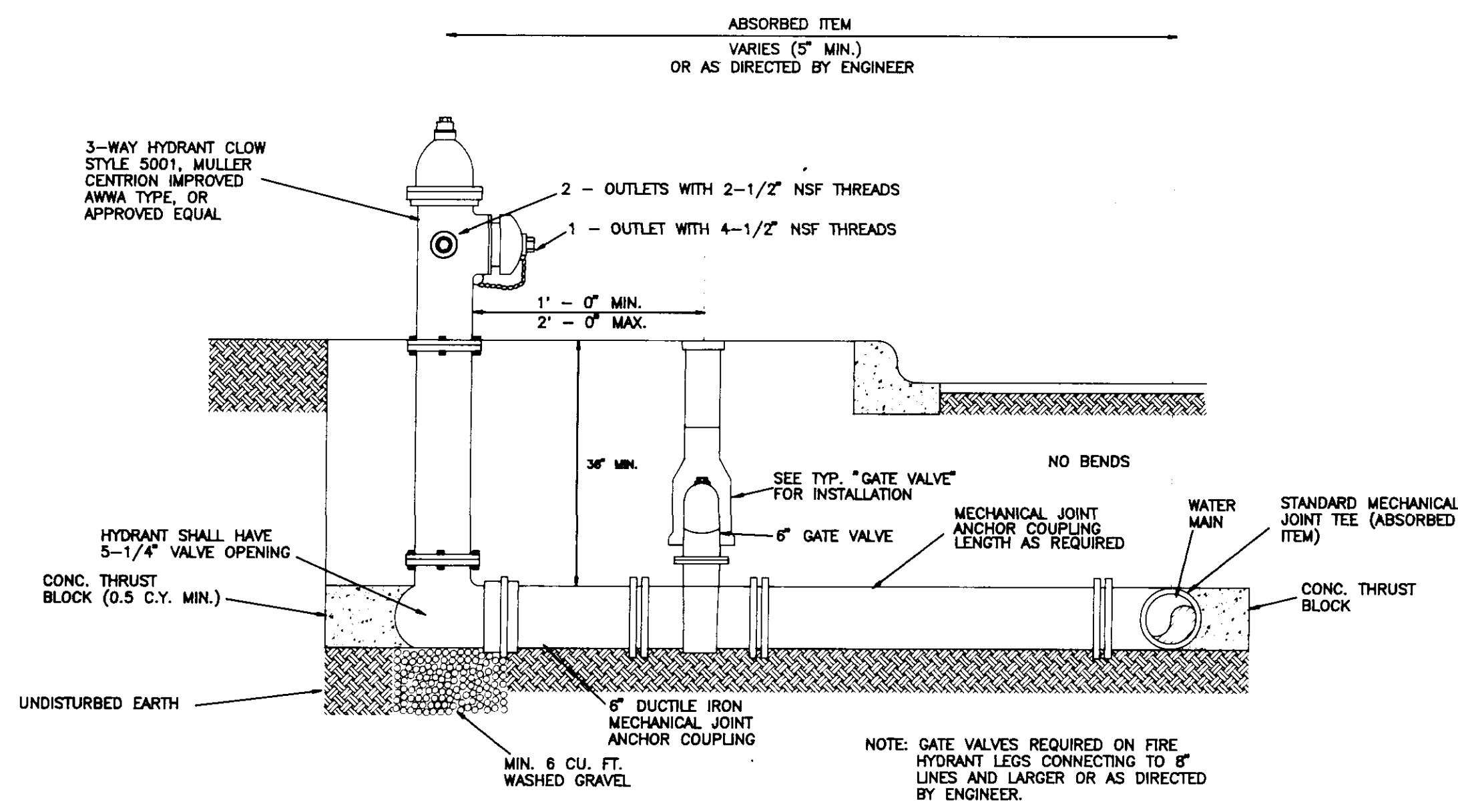


FLAT SLAB MANHOLE TOP

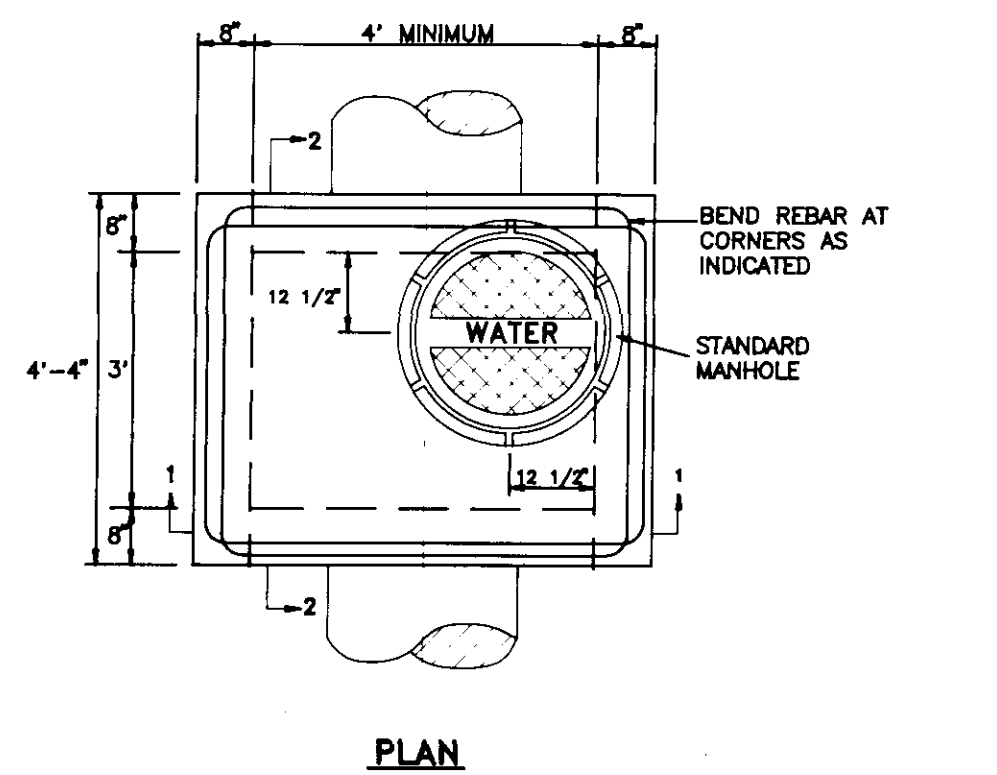
PIPE DIAMETER	W	D	T
48"	5"	50"	6"
60"	6"	72"	8"
72"	7"	86"	8"
84"	8"	100"	8"
96"	9"	114"	8"
108"	10"	126"	8"



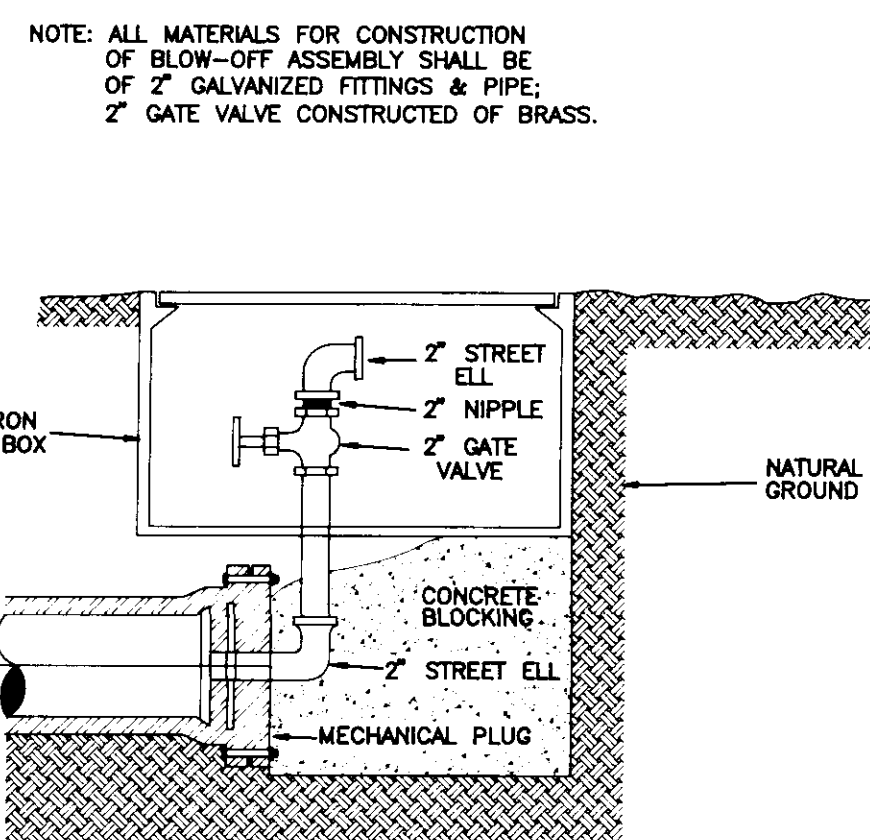
TERMINAL CLEANOUT



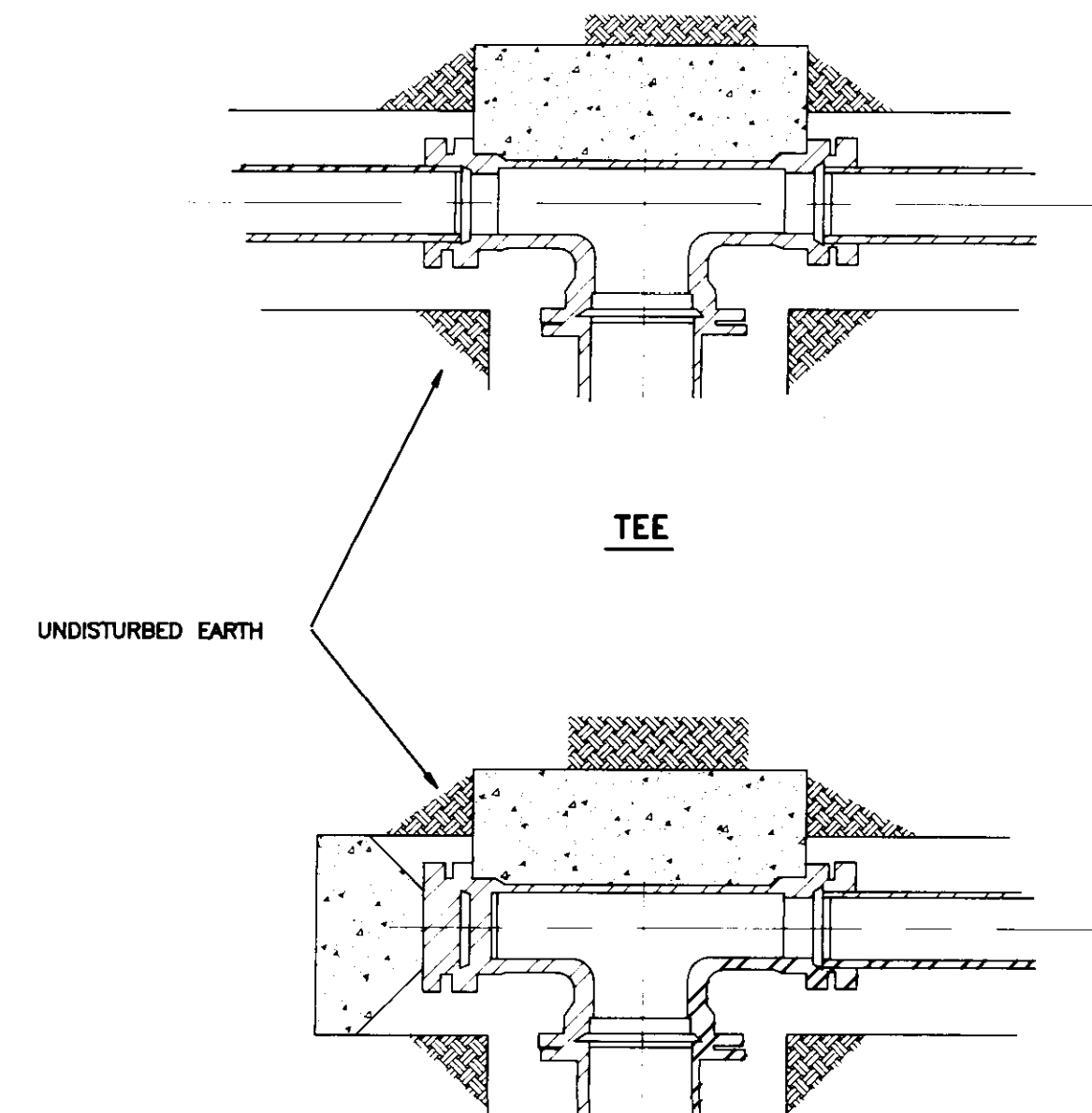
FIRE HYDRANT ASSEMBLY



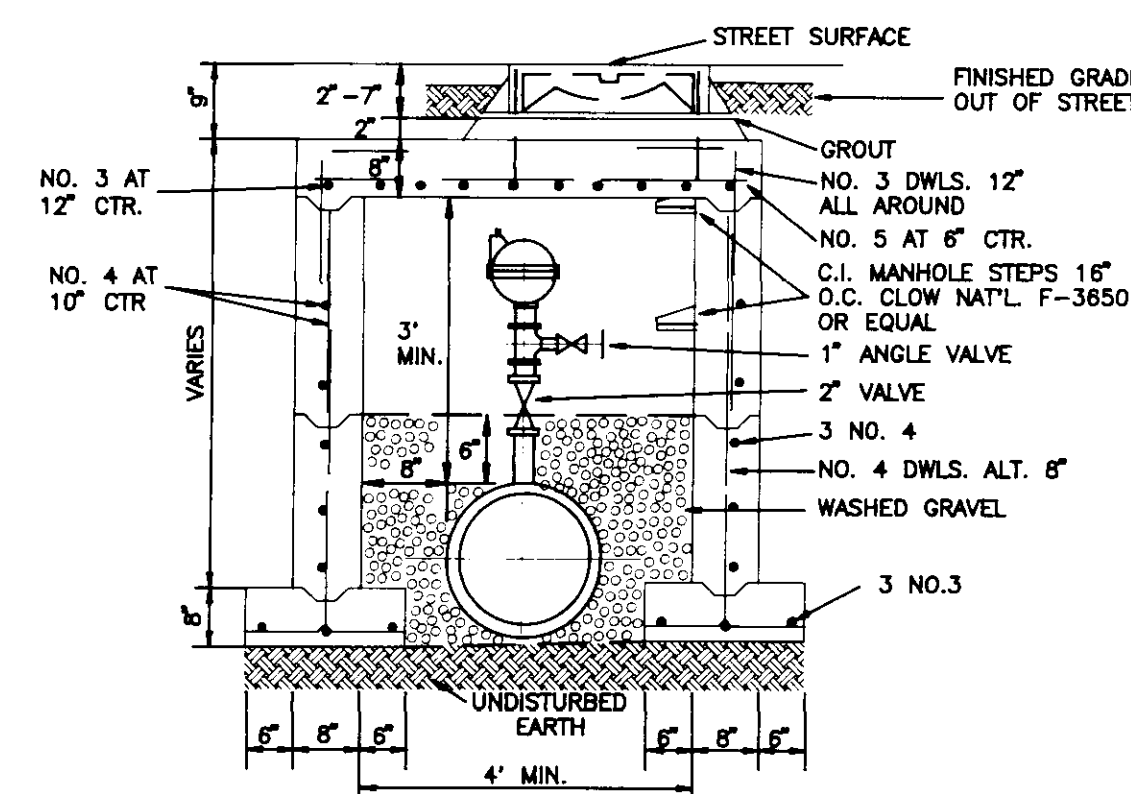
PLAN



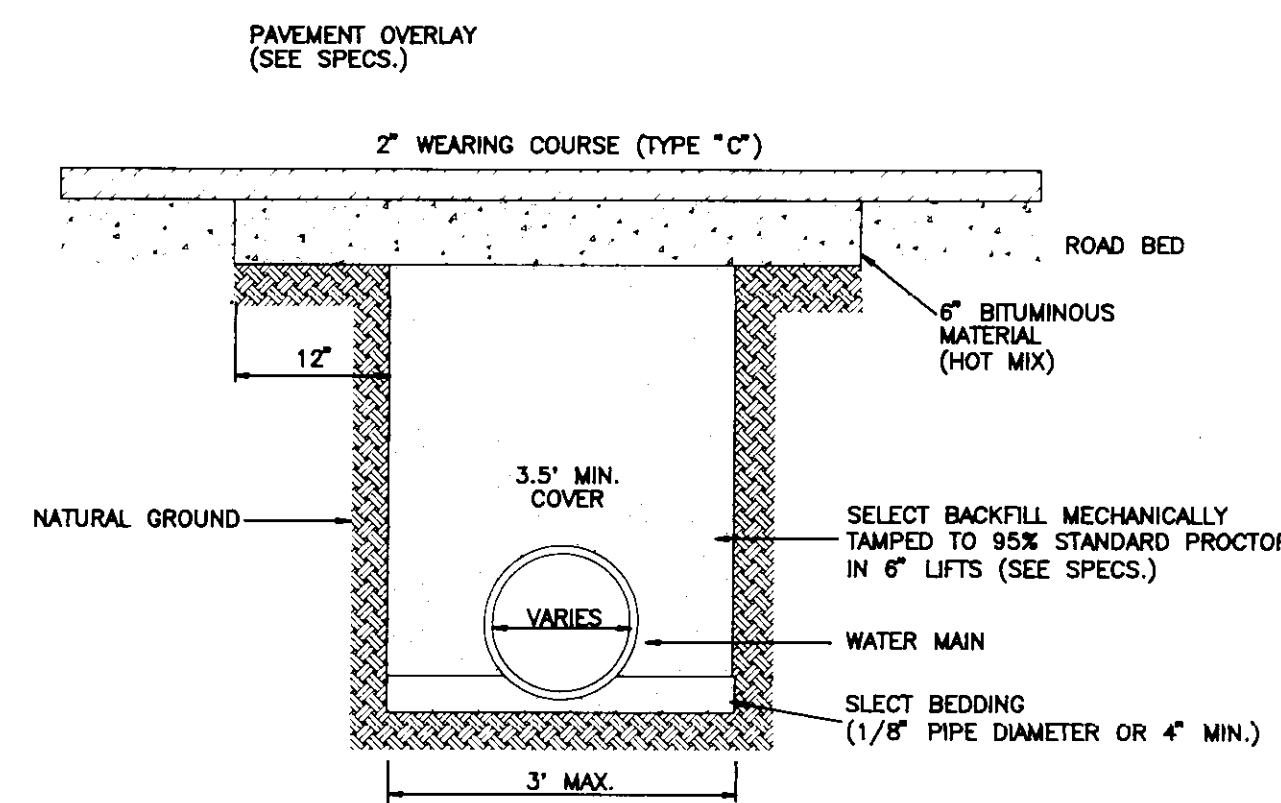
TYPICAL BLOW-OFF ASSEMBLY



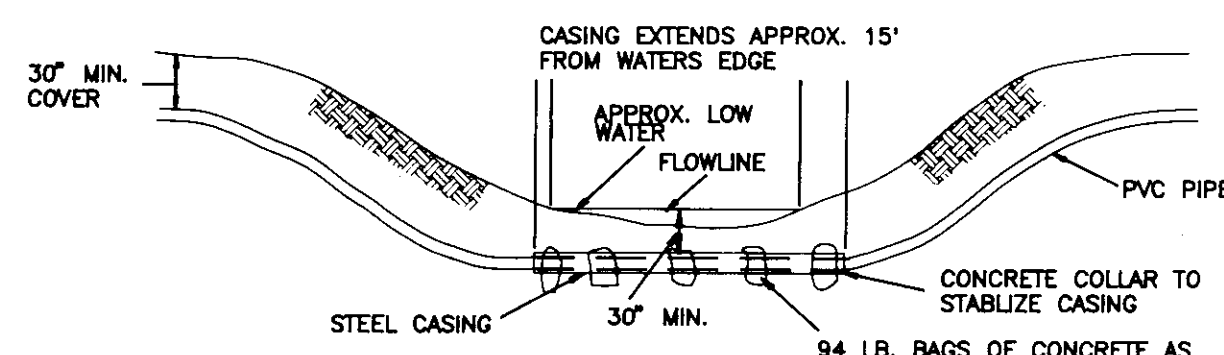
PLUGGED TEE



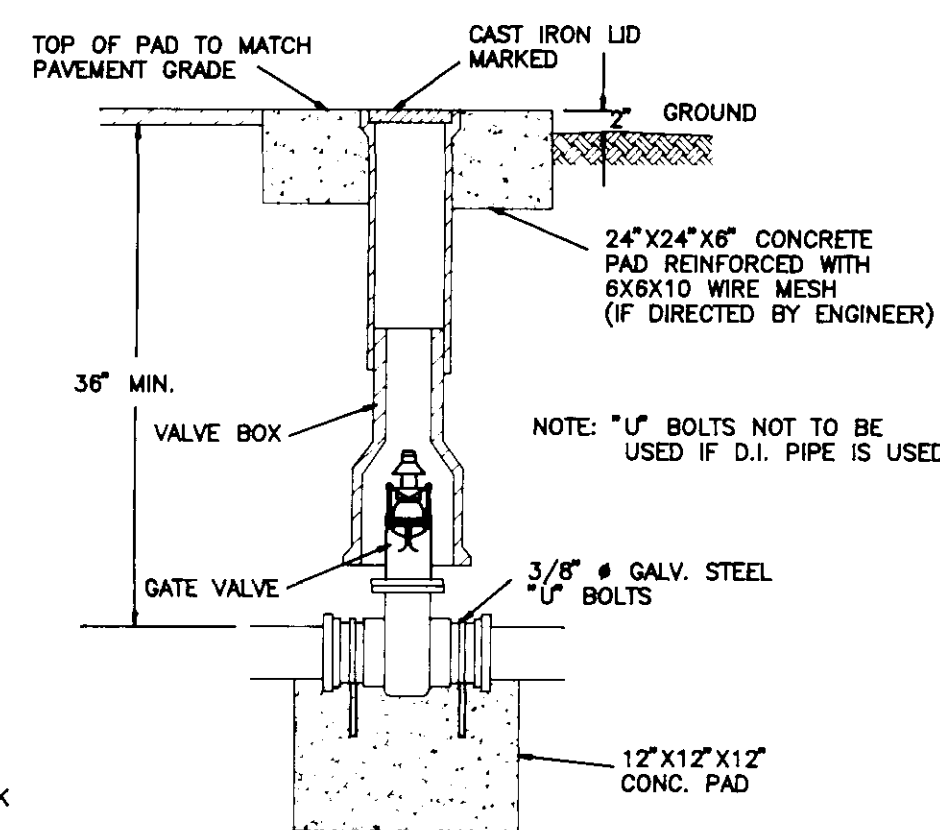
SECTION 1-1



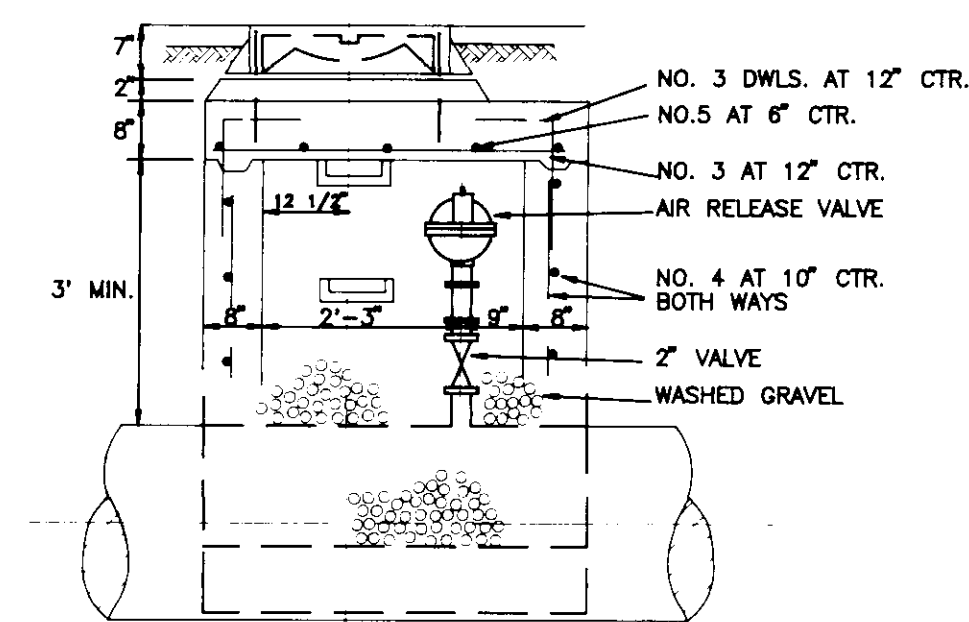
TYPICAL STREET REPAIR



TYPICAL CREEK CROSSING FOR PVC PIPE

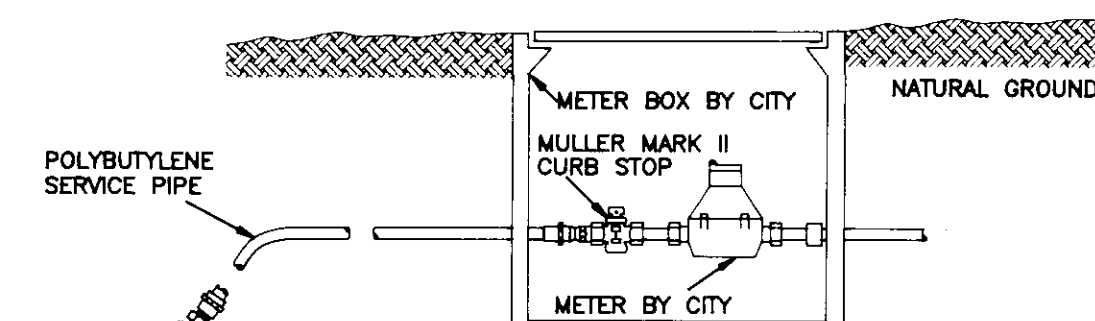


GATE VALVE

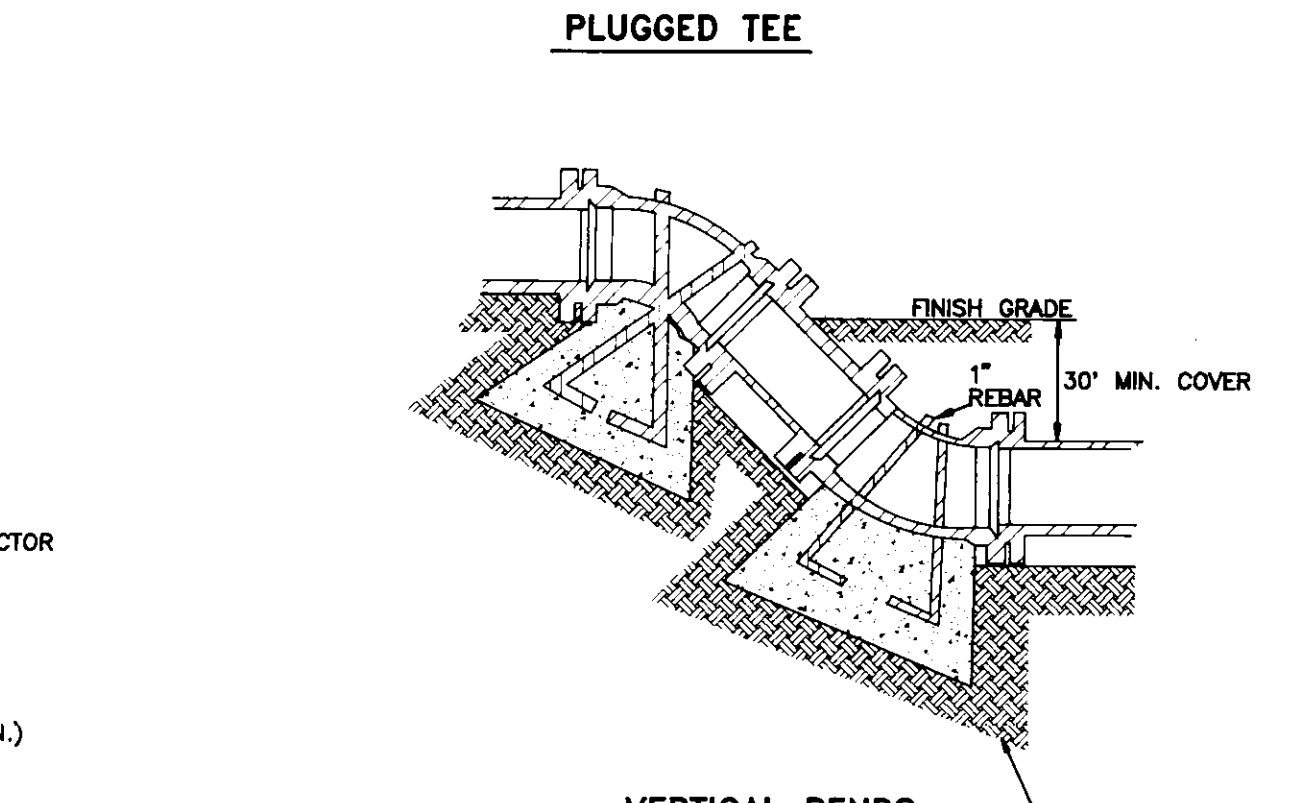


SECTION 2-2

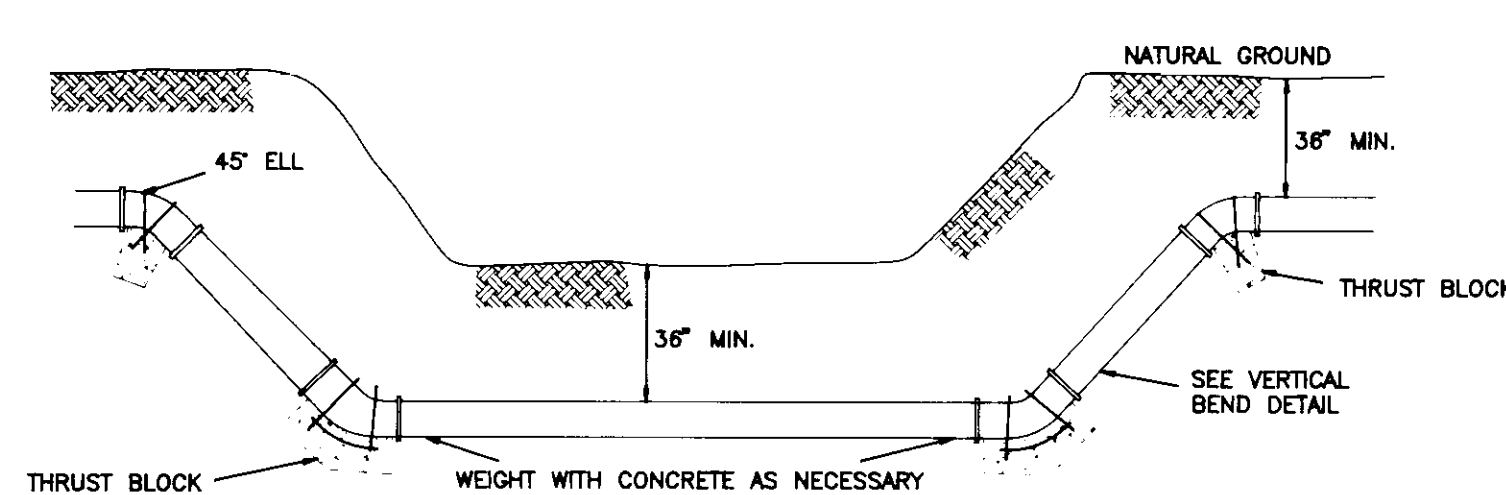
TYPICAL AIR RELEASE VALVE AND MANHOLE



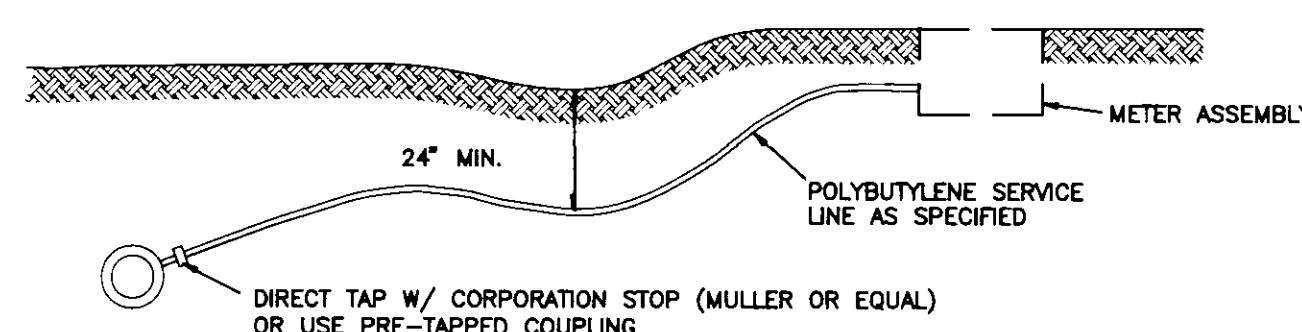
TYPICAL SERVICE ASSEMBLY



VERTICAL BENDS



TYPICAL CREEK CROSSING FOR DUCTILE IRON PIPE



FOR DUCTILE IRON PIPE

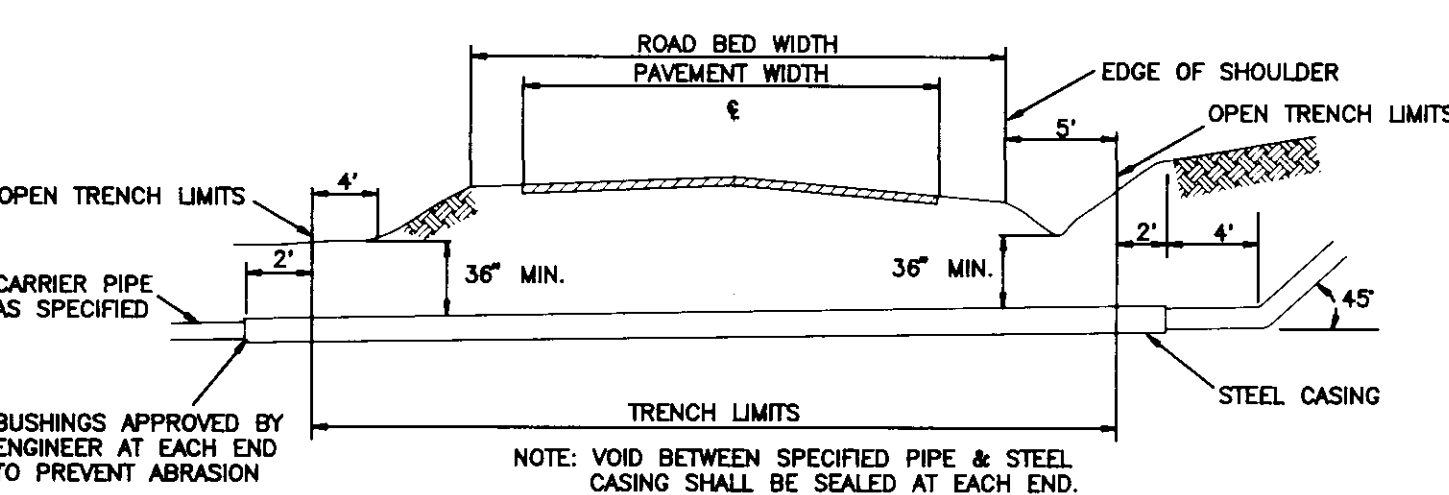
TYPICAL BLOCKING ON WATER MAIN

(3000 PSI CONCRETE REQUIRED)

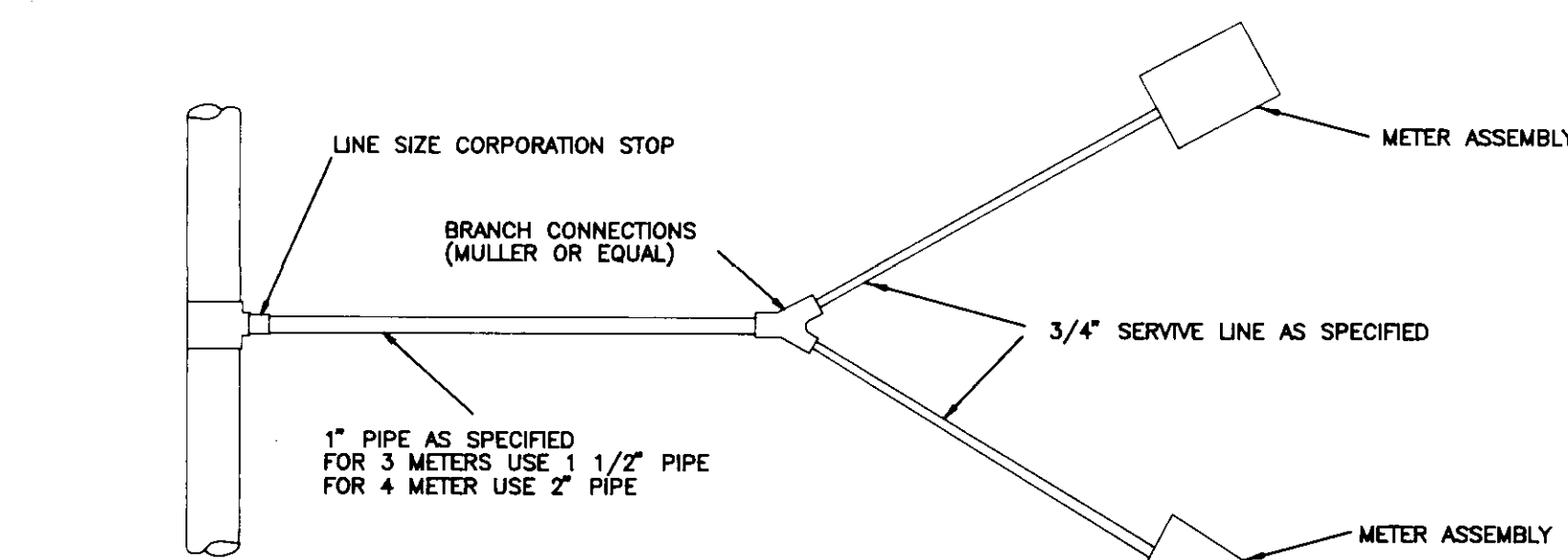
BEARING AREA IN SQ. FT.

NOMINAL PIPE DIAMETER (IN.)	DEAD-END OR TEE	90° BEND	45° BEND	22 1/2° BEND	11 1/4° BEND
4	2.0	2.0	2.0	2.0	2.0
6	2.0	2.0	2.0	2.0	2.0
8	2.0	3.0	3.0	3.0	3.0
12	5.0	6.0	4.0	3.0	3.0
18	8.0	12.0	8.0	4.0	4.0
VERTICAL BENDS					
4		8.0 (.22)	4.0 (.18)	4.0 (.18)	
6		14.0 (.32)	8.0 (.32)	4.0 (.18)	
8		27.0 (.50)	9.0 (.33)	8.0 (.32)	
12		48.0 (.80)	22.0 (.80)	8.0 (.32)	
18		95.0 (3.33)	32.0 (1.0)	18.0 (.87)	

VOLUME OF BLOCKS INCLUDING SOIL LOAD (CU. FT. (CU. YDS.))



TYPICAL ROAD BORE



MULTIPLE CONNECTIONS

SERVICE CONNECTIONS

NOTE: TAPS, SADDLES, CORPORATION STOP, & BRANCH CONNECTIONS SHALL BE ABSORBED IN THE COST PER LINEAR FOOT OF SERVICE PIPE. MEASUREMENT OF SERVICE LINE SHALL END AT METER BOX.

FIELD

REYNOLDS ENGINEERING, INC.

POST OFFICE BOX 526

JACKSON, MISSISSIPPI 39205

STANDARD WATER DETAILS

DATE _____ REVISION _____ BY _____ DRAWN BY _____

SOURCE _____

BOOK _____ PAGE _____

DATE _____

DATUM

601-353-5416

