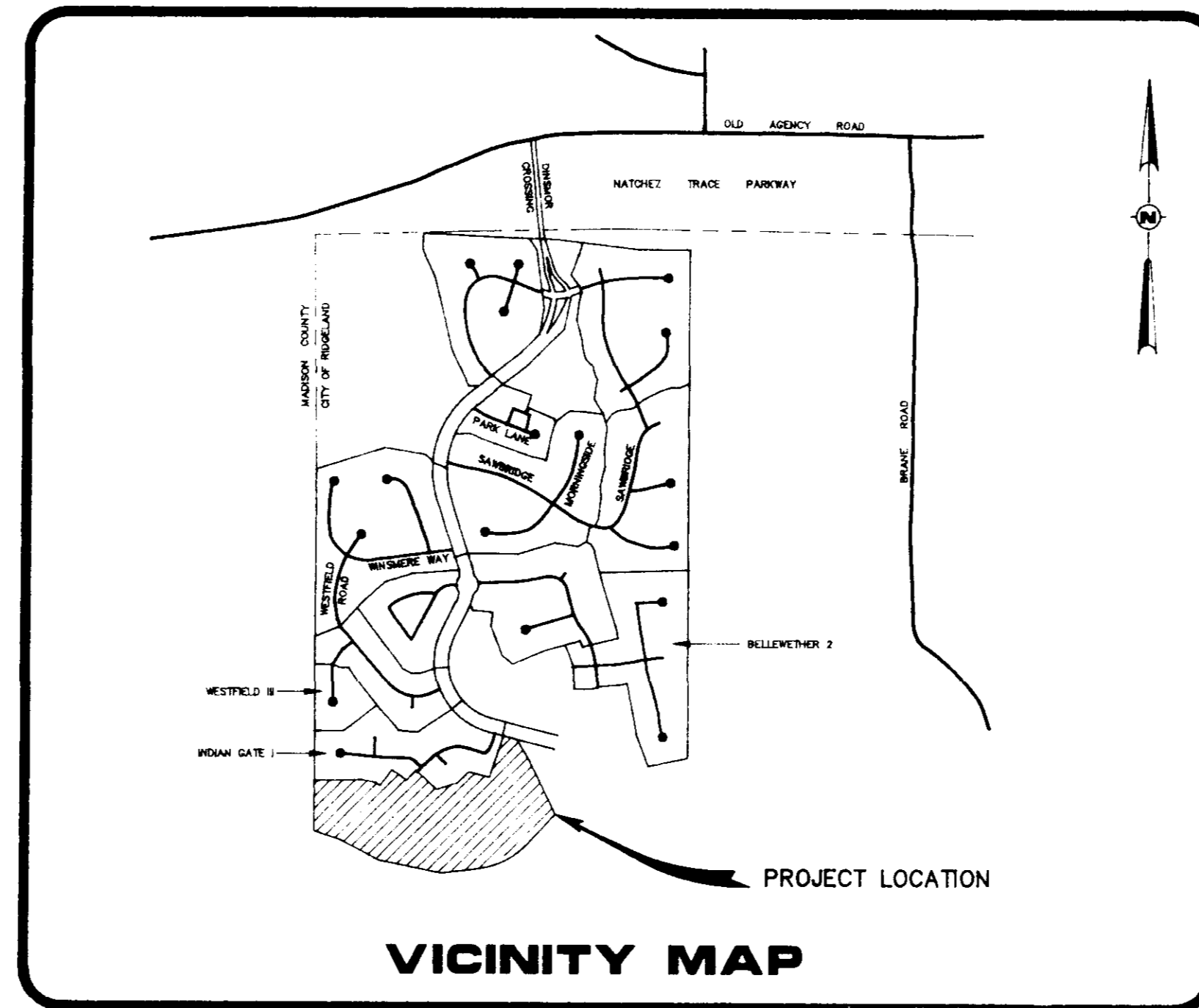


CONSTRUCTION PLANS FOR INDIAN GATE II OF DINSMOR



*Bw 3-8-93 Ok As Wiked
SID Mon. 8.93*

DRAWING INDEX

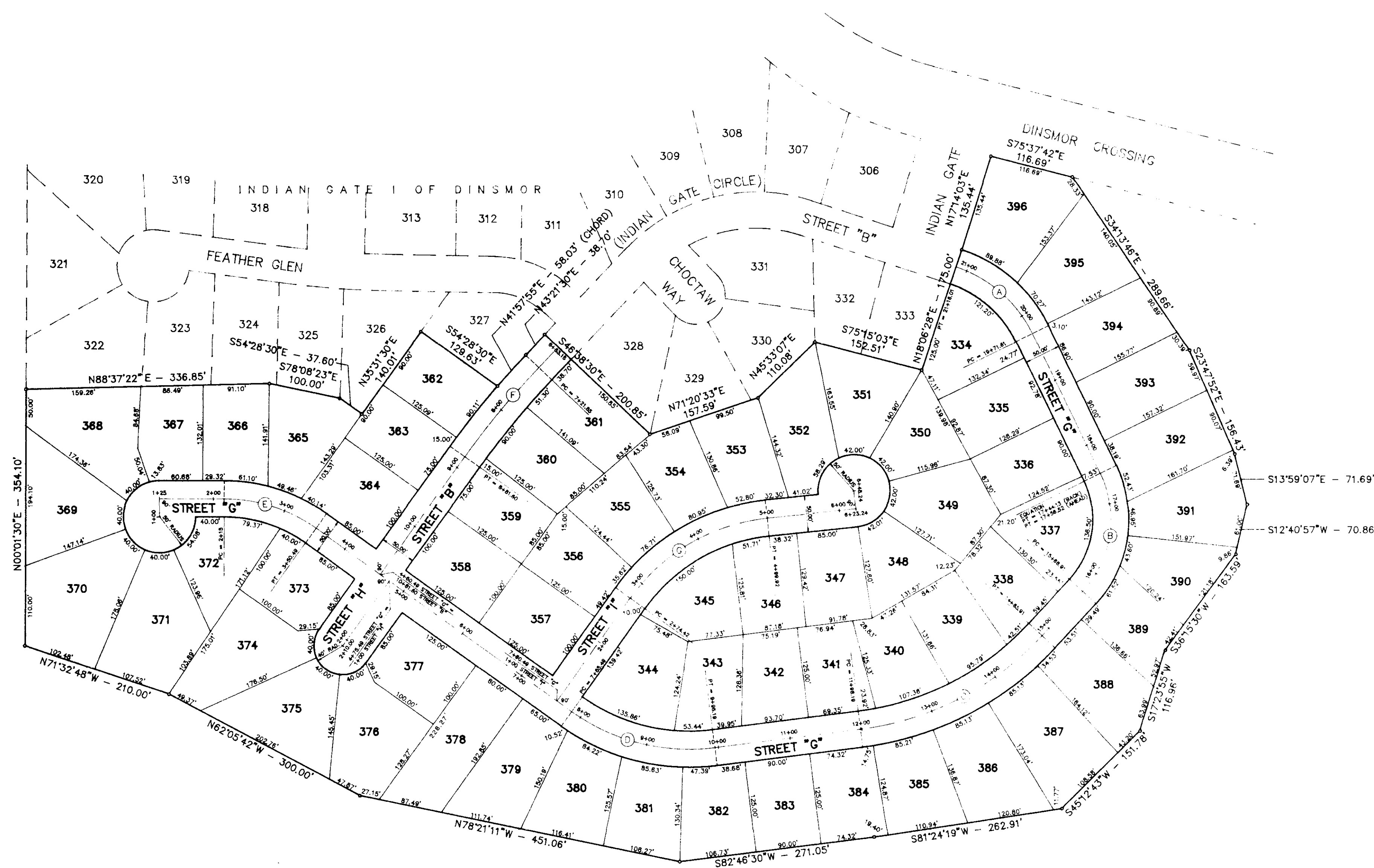
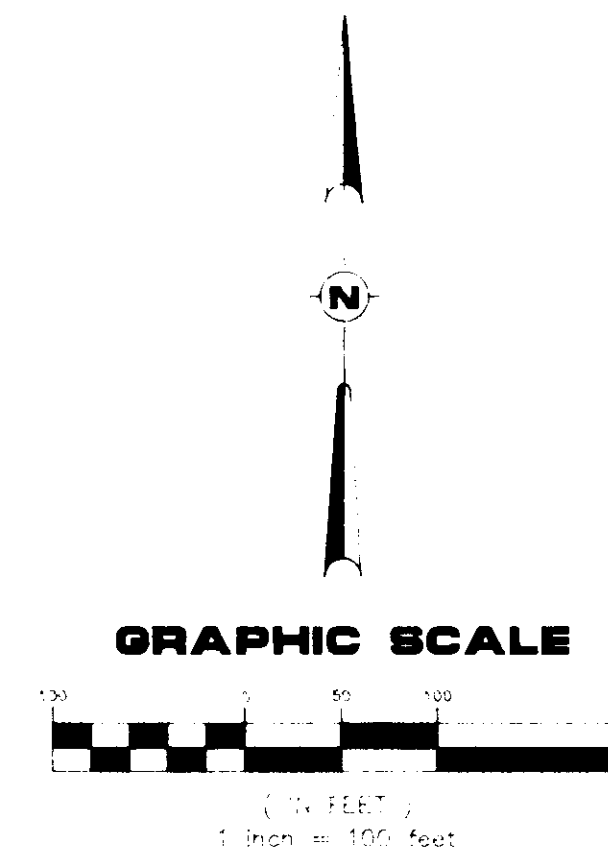
- 1 - COVER SHEET
- 2 - GEOMETRIC LAYOUT
- 3 - SEWER AND WATER LAYOUT
- 4 - DRAINAGE AND GRADING LAYOUT
- 5 - PLAN & PROFILE - STREET "G" (STA. 0+50 TO STA. 13+00)
- 6 - PLAN & PROFILE - STREET "G" (STA. 13+00 TO STA. 21+16.01)
- 7 - PLAN & PROFILE - STREET "H" (STA. 1+00 TO STA. 2+50)
- 8 - PLAN & PROFILE - STREET "I" (STA. 1+00 TO STA. 6+73.24)
- 9 - PLAN & PROFILE - DRAINAGE IMPROVEMENTS (NORTHEAST CORNER OF LOT 365 TO CREEK)
- 10 - PLAN & PROFILE - DRAINAGE IMPROVEMENTS (LOTS 383 AND 384 / DITCH TO CREEK)
- 11 - STANDARD SANITARY SEWER DETAILS
- 12 - STANDARD WATER DETAILS
- 13 - STANDARD STORM SEWER DETAILS



PWP-00418

DRAWING NO. 12-CYR

FIELD	REYNOLDS ENGINEERING, INC. POST OFFICE BOX 526 JACKSON, MISSISSIPPI 39205 601-362-4885	CLIENT DEVELOPED BY: S.M.C.D.C., INC. GENERAL PARTNERSHIP 805 SOUTH WHEATLEY STREET RIDGELAND, MISSISSIPPI	LOCATION SITUATED IN THE EAST 1/2 OF SECTION 26 TOWNSHIP 7 NORTH - RANGE 1 EAST MADISON COUNTY, MISSISSIPPI	DATE	REVISION	BY	DRAWN BY: P.H.W. DATE: 2/15/93 SCALE: BOOK: PAGE: PROJECT NO.: 91-034	SHEET 1
DATUM								



② CURVE DATA

1) $\Delta = 45^{\circ}40'02''$ R = 181.16' D = 31.62717' T = 76.28' L = 144.40'	2) $\Delta = 69^{\circ}00'00''$ R = 145.50' D = 39.37854' T = 100.00' L = 175.22'	3) $\Delta = 46^{\circ}00'00''$ R = 412.12' D = 13.90269' T = 150.00' L = 287.72'	4) $\Delta = 42^{\circ}45'00''$ R = 281.05' D = 20.36633' T = 110.00' L = 209.70'
5) $\Delta = 35^{\circ}30'00''$ R = 218.68' D = 26.20074' T = 70.00' L = 135.49'	6) $\Delta = 07^{\circ}50'00''$ R = 1168.47' D = 4.90349' T = 80.00' L = 159.75'	7) $\Delta = 48^{\circ}30'00''$ R = 266.39' D = 21.50823' T = 120.00' L = 225.50'	

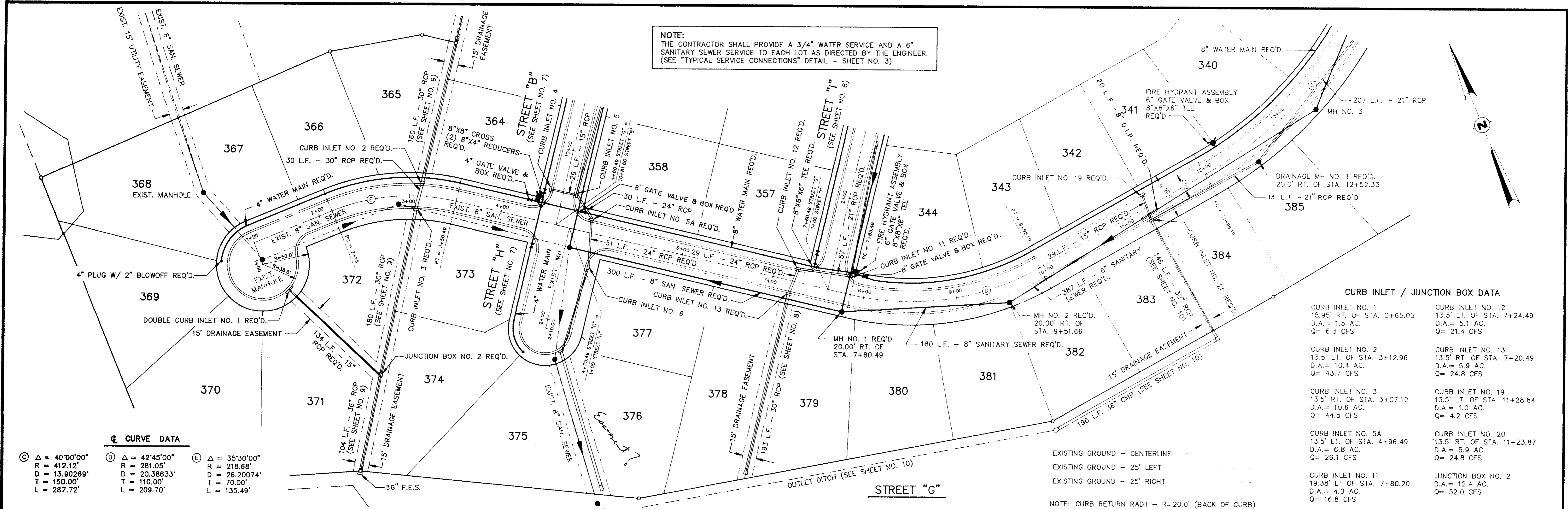
**GEOMETRIC LAYOUT
FOR**

INDIAN GATE II OF DINSMOR
(PARCEL CONTAINS 22.8123 ACRES OF LAND, MORE OR LESS)

DRAWING NO. 12-850

FIELD	REYNOLDS ENGINEERING, INC. POST OFFICE BOX 526 JACKSON, MISSISSIPPI 39205 601-362-4885	CLIENT	S.M.C.D.C., INC. GENERAL PARTNERSHIP 805 SOUTH WHEATLEY STREET RIDGELAND, MISSISSIPPI	LOCATION	SITUATED IN THE EAST 1/2 OF SECTION 26 TOWNSHIP 7 NORTH - RANGE 1 EAST MADISON COUNTY, MISSISSIPPI	DATE	2/15/93	BY	DRAWN BY: P.H.W.	SHEET	2
DATUM									SCALE: 1"=100'	PAGE:	
									PROJECT NO.: 91-034		

NOTE:
THE CONTRACTOR SHALL PROVIDE A 3/4" WATER SERVICE AND A 6" SANITARY SEWER SERVICE TO EACH LOT AS DIRECTED BY THE ENGINEER. (SEE "TYPICAL SERVICE CONNECTIONS" DETAIL - SHEET NO. 3)



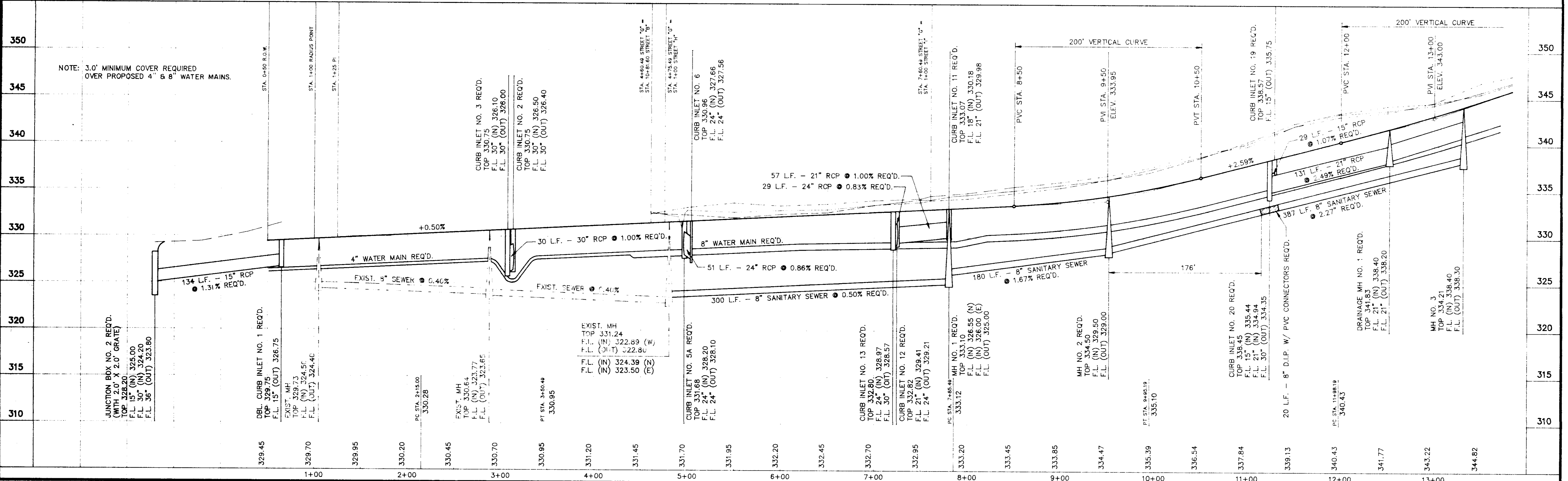
☉ CURVE DATA

☉ Δ = 40°00'00"	☉ Δ = 42°45'00"	☉ Δ = 35°30'00"
R = 412.12'	R = 281.05'	R = 218.88'
D = 13.90269'	D = 20.38633'	D = 26.20074'
T = 150.00'	T = 110.00'	T = 70.00'
L = 287.72'	L = 209.70'	L = 135.49'

CURB INLET / JUNCTION BOX DATA

CURB INLET NO. 1 15.95' RT. OF STA. 0+65.05 D.A. = 1.5 AC. Q = 6.3 CFS	CURB INLET NO. 12 13.5' LT. OF STA. 7+24.49 D.A. = 5.1 AC. Q = 21.4 CFS
CURB INLET NO. 2 13.5' LT. OF STA. 3+12.96 D.A. = 10.4 AC. Q = 43.7 CFS	CURB INLET NO. 13 13.5' RT. OF STA. 7+20.49 D.A. = 5.9 AC. Q = 24.8 CFS
CURB INLET NO. 3 13.5' RT. OF STA. 3+07.10 D.A. = 10.6 AC. Q = 44.5 CFS	CURB INLET NO. 19 13.5' LT. OF STA. 11+28.84 D.A. = 1.0 AC. Q = 4.2 CFS
CURB INLET NO. 5A 13.5' LT. OF STA. 4+96.49 D.A. = 6.8 AC. Q = 26.1 CFS	CURB INLET NO. 20 13.5' RT. OF STA. 11+23.87 D.A. = 5.9 AC. Q = 24.8 CFS
CURB INLET NO. 11 19.38' LT. OF STA. 7+80.20 D.A. = 4.0 AC. Q = 16.8 CFS	JUNCTION BOX NO. 2 D.A. = 12.4 AC. Q = 52.0 CFS

EXISTING GROUND - CENTERLINE
EXISTING GROUND - 25' LEFT
EXISTING GROUND - 25' RIGHT
NOTE: CURB RETURN RADII - R=20.0' (BACK OF CURB)



FIELD	PROJECT	LOCATION	DATE	REVISION	BY	DRAWN BY: P.H.W.	SHEET
	INDIAN GATE II OF DINSMOR	STREET "G" - STA. 0+50 TO STA. 13+00	DATE: 2/15/93			HORIZ.: 1"=50' / VERT.: 1"=5'	5
DATUM	REYNOLDS ENGINEERING, INC. POST OFFICE BOX 526 JACKSON, MISSISSIPPI 39205 601-362-4885		BOOK: 888 PAGE: 73-76 18-21			PROJECT NO.: 91-034	

CURB INLET DATA

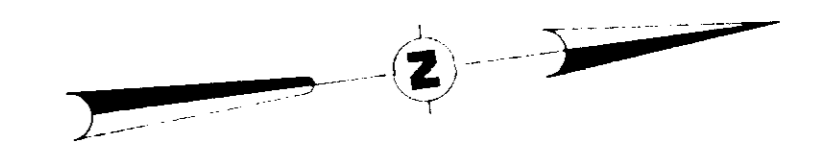
CURB INLET NO. 14
 13.5' RT. OF STA. 17+94.71
 D.A. = 0.9 AC.
 Q = 3.8 CFS

CURB INLET NO. 15
 13.5' LT. OF STA. 17+63.84
 D.A. = 1.9 AC.
 Q = 8.0 CFS

CURB INLET NO. 16
 13.5' RT. OF STA. 16+21.70
 D.A. = 2.8 AC.
 Q = 11.8 CFS

CURB INLET NO. 17
 13.5' LT. OF STA. 14+40.63
 D.A. = 1.0 AC.
 Q = 4.2 CFS

CURB INLET NO. 18
 13.5' RT. OF STA. 14+53.34
 D.A. = 4.2 AC.
 Q = 17.6 CFS



☉ CURVE DATA

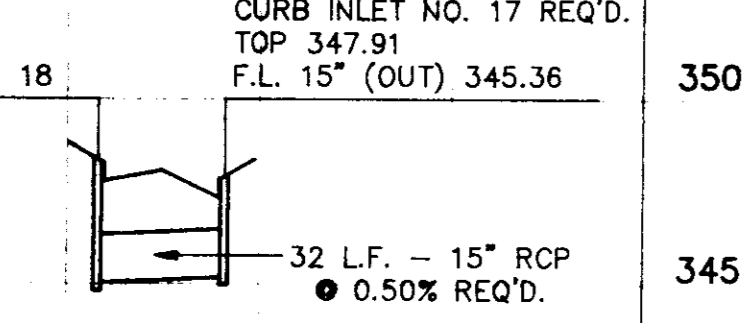
☉ Δ = 45°40'02"	☉ Δ = 69°00'00"	☉ Δ = 40°00'00"
R = 181.16'	R = 145.50'	R = 412.12'
D = 31.62717'	D = 39.37854'	D = 13.90269'
T = 76.28'	T = 100.00'	T = 150.00'
L = 144.40'	L = 175.22'	L = 287.72'

NOTE:
 THE CONTRACTOR SHALL PROVIDE A 3/4" WATER SERVICE AND A 6" SANITARY SEWER SERVICE TO EACH LOT AS DIRECTED BY THE ENGINEER. (SEE "TYPICAL SERVICE CONNECTIONS" DETAIL - SHEET NO. 3)

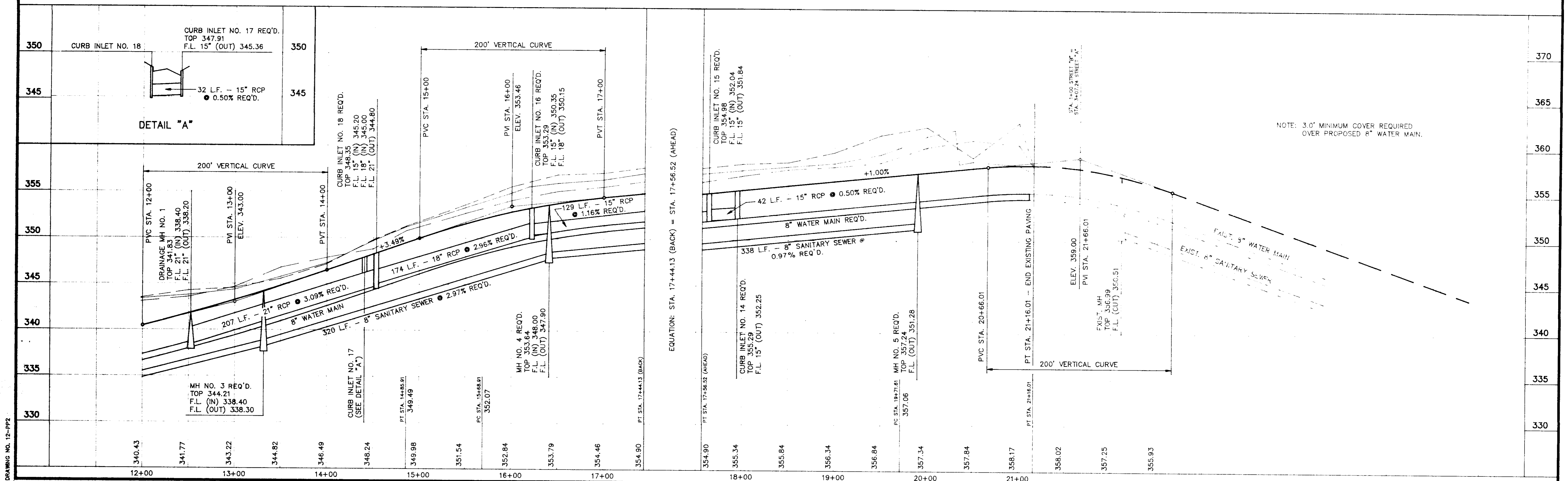
EXISTING GROUND - CENTERLINE
 EXISTING GROUND - 25' LEFT
 EXISTING GROUND - 25' RIGHT

STREET "G"

DETAIL "A"



NOTE: 3.0' MINIMUM COVER REQUIRED OVER PROPOSED 8" WATER MAIN.



DRAWING NO. 12-PP2

REYNOLDS ENGINEERING, INC.
 POST OFFICE BOX 526
 JACKSON, MISSISSIPPI 39205

PROJECT
INDIAN GATE II OF DINSMOR

LOCATION
STREET "G" STA. 13+00 TO STA. 21+16.01

DATE	REVISION	BY
2/15/93		P.H.W.

DRAWN BY: P.H.W.
 DATE: 2/15/93
 HORIZ.: 1"=50' / VERT.: 1"=5'
 BOOK: 681 PAGE: 21-23
 PROJECT NO.: 91-034

SHEET
6

DATUM

601-362-4885

NOTE:
THE CONTRACTOR SHALL PROVIDE A 3/4" WATER SERVICE AND A 6" SANITARY SEWER SERVICE TO EACH LOT AS DIRECTED BY THE ENGINEER. (SEE "TYPICAL SERVICE CONNECTIONS" DETAIL - SHEET NO. 3)

CURB INLET DATA

CURB INLET NO. 8
13.5' LT. OF STA. 4+53.17
D.A. = 1.1 AC.
Q = 4.6 CFS

CURB INLET NO. 9
13.5' RT. OF STA. 4+45.06
D.A. = 2.4 AC.
Q = 10.1 CFS

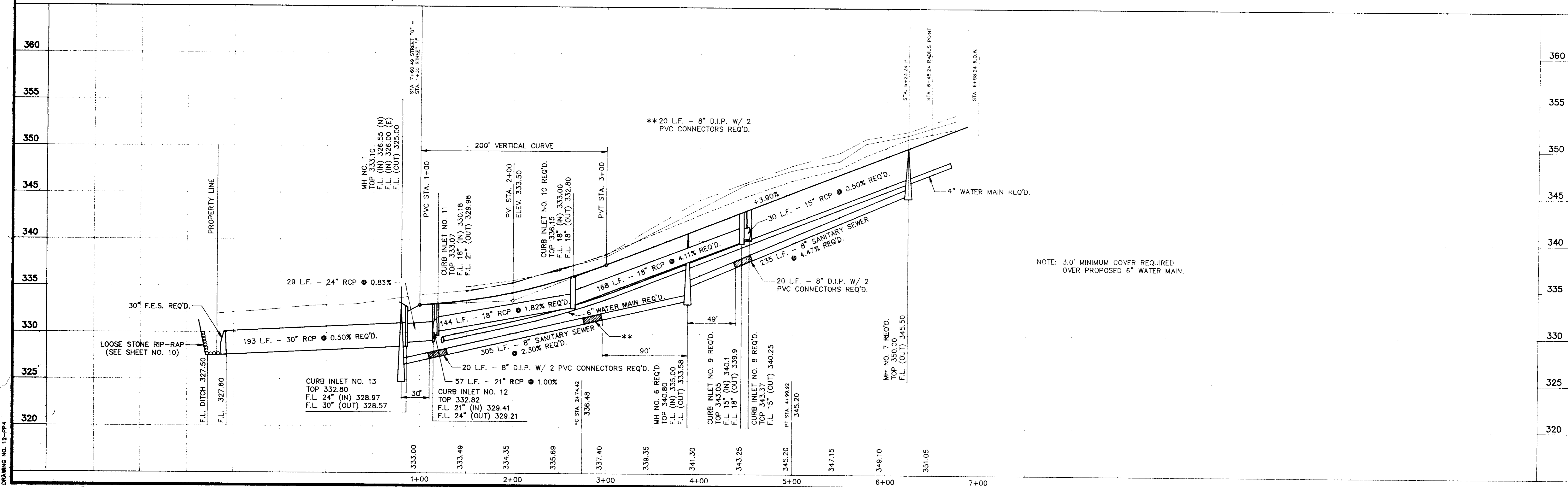
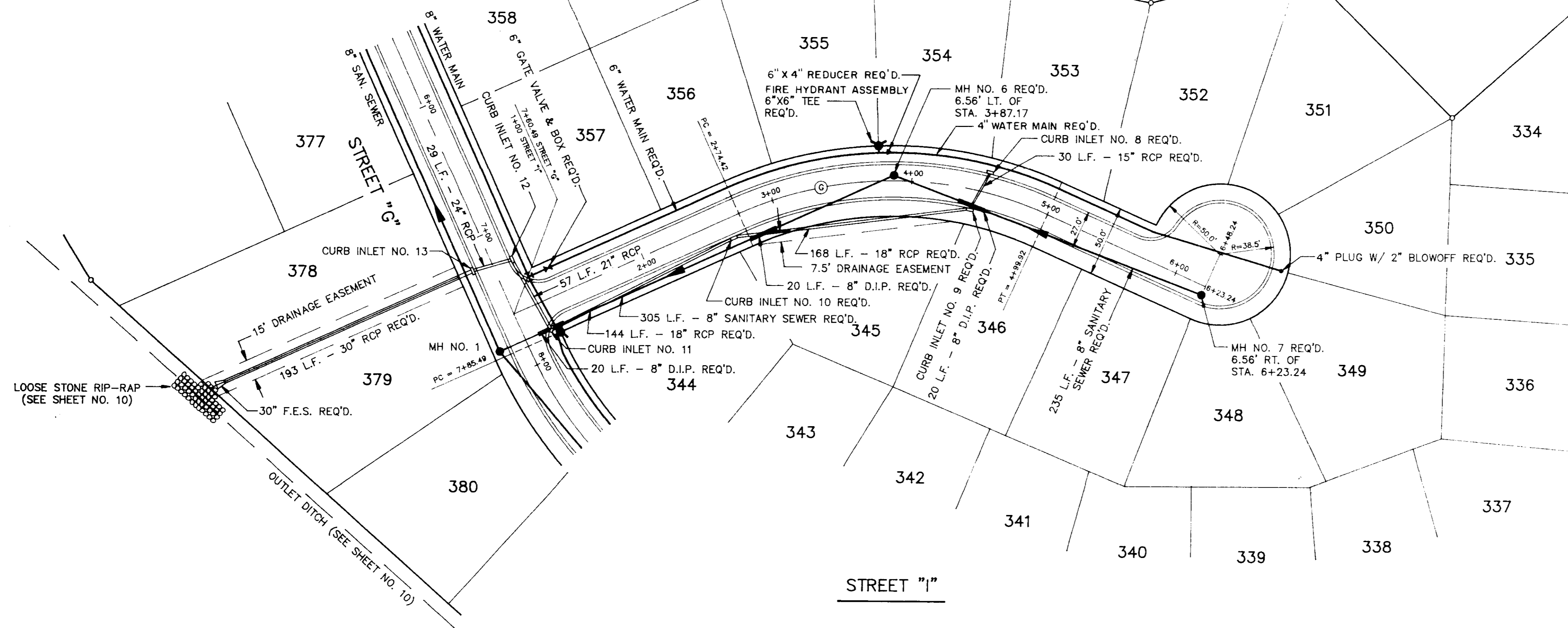
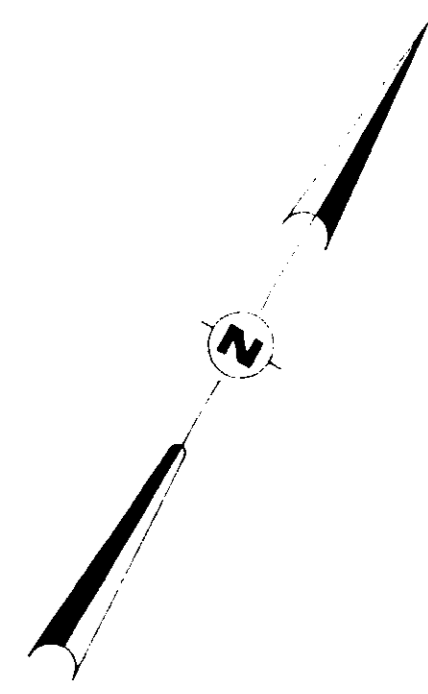
CURB INLET NO. 10
13.5' RT. OF STA. 2+64.42
D.A. = 2.9 AC.
Q = 12.2 CFS

⊕ CURVE DATA

⊕ Δ = 48°30'00"
R = 266.39'
D = 21,508.23'
T = 120.00'
L = 225.50'

NOTE: CURB RETURN RADII - R=20.0' (BACK OF CURB)

EXISTING GROUND - CENTERLINE
EXISTING GROUND - 25' LEFT
EXISTING GROUND - 25' RIGHT



DRAWING NO. 12-PP4

REYNOLDS ENGINEERING, INC.
POST OFFICE BOX 526 JACKSON, MISSISSIPPI 39205
601-362-4885

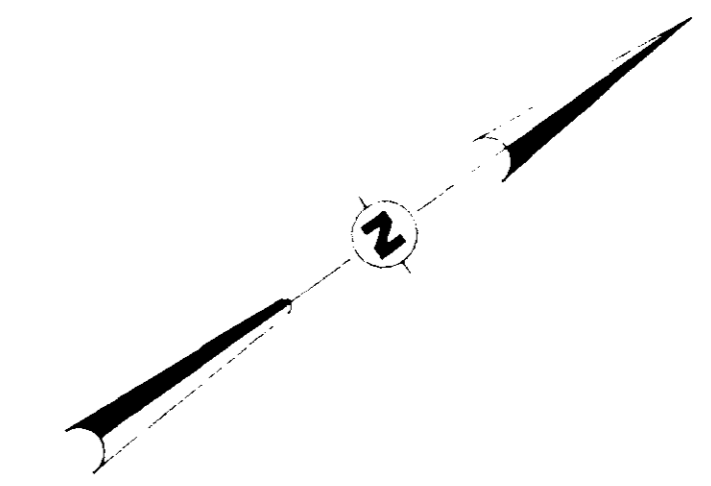
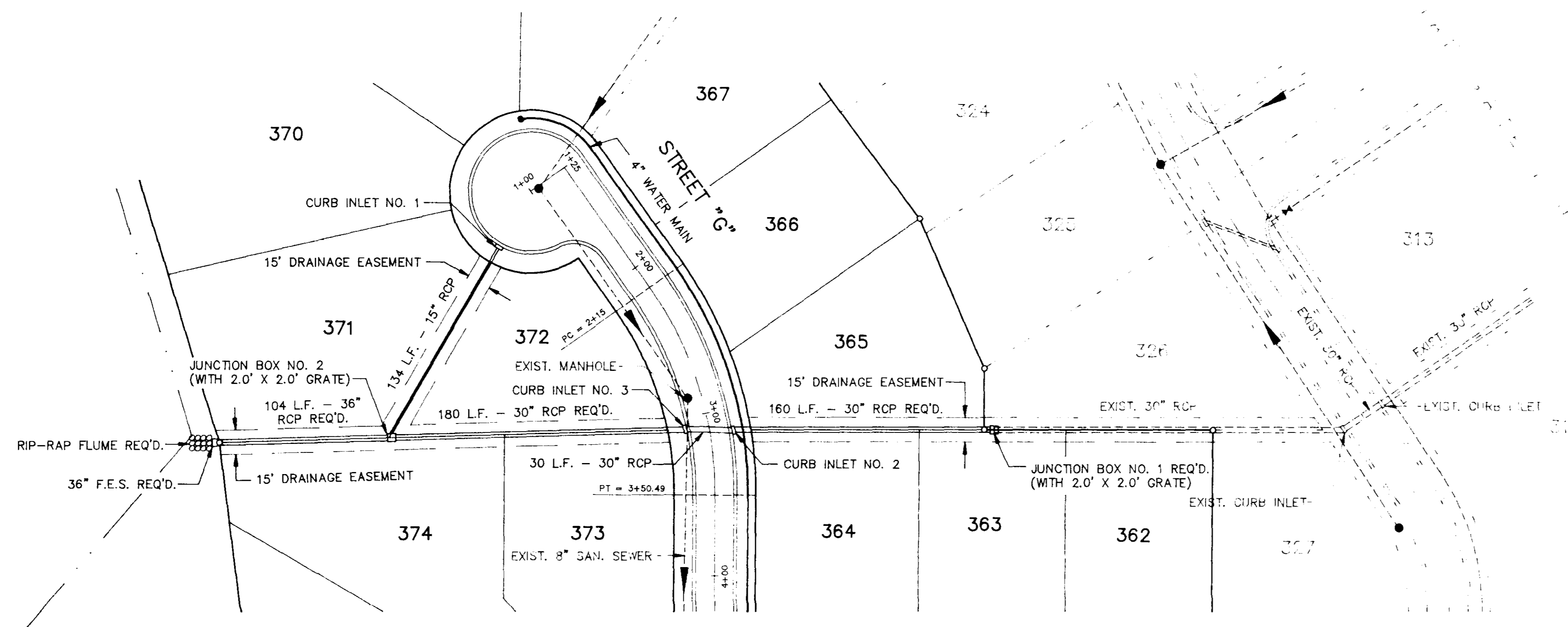
PROJECT: **INDIAN GATE II OF DINSMOR**
LOCATION: **STREET "I" - STA. 1+00 TO STA. 6+73.24**

DATE	REVISION	BY

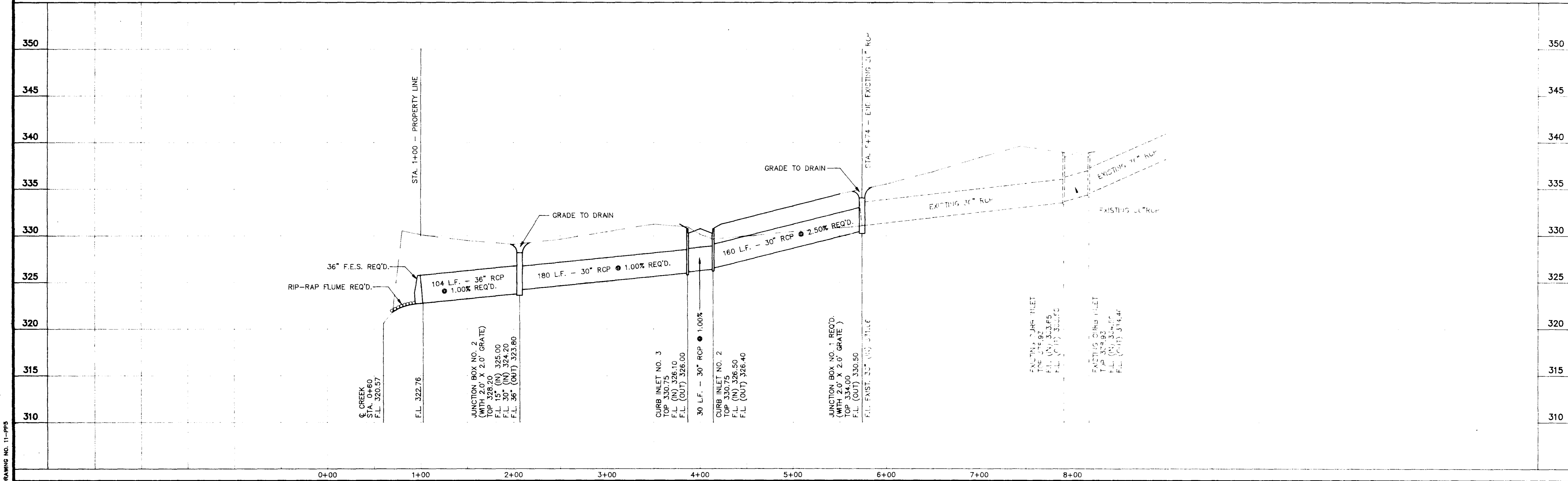
DRAWN BY: P.H.W.
DATE: 2/15/93
HORIZ.: 1"=50' / VERT.: 1"=5'
BOOK: 681 PAGE: 18-19
PROJECT NO.: 91-034

DATUM

SHEET
8

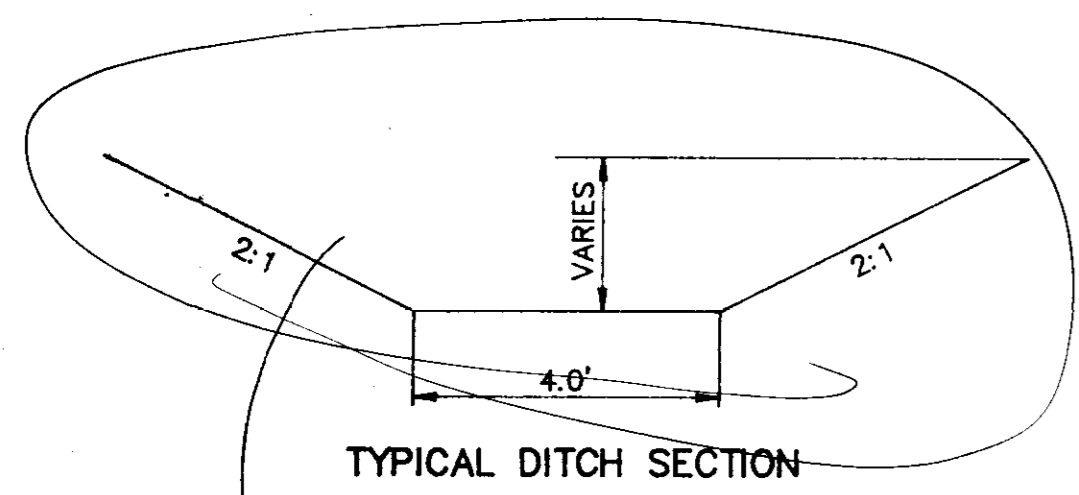


JUNCTION BOX DATA
 JUNCTION BOX NO. 1
 D.A. = 10.2 AC.
 Q = 42.8 CFS



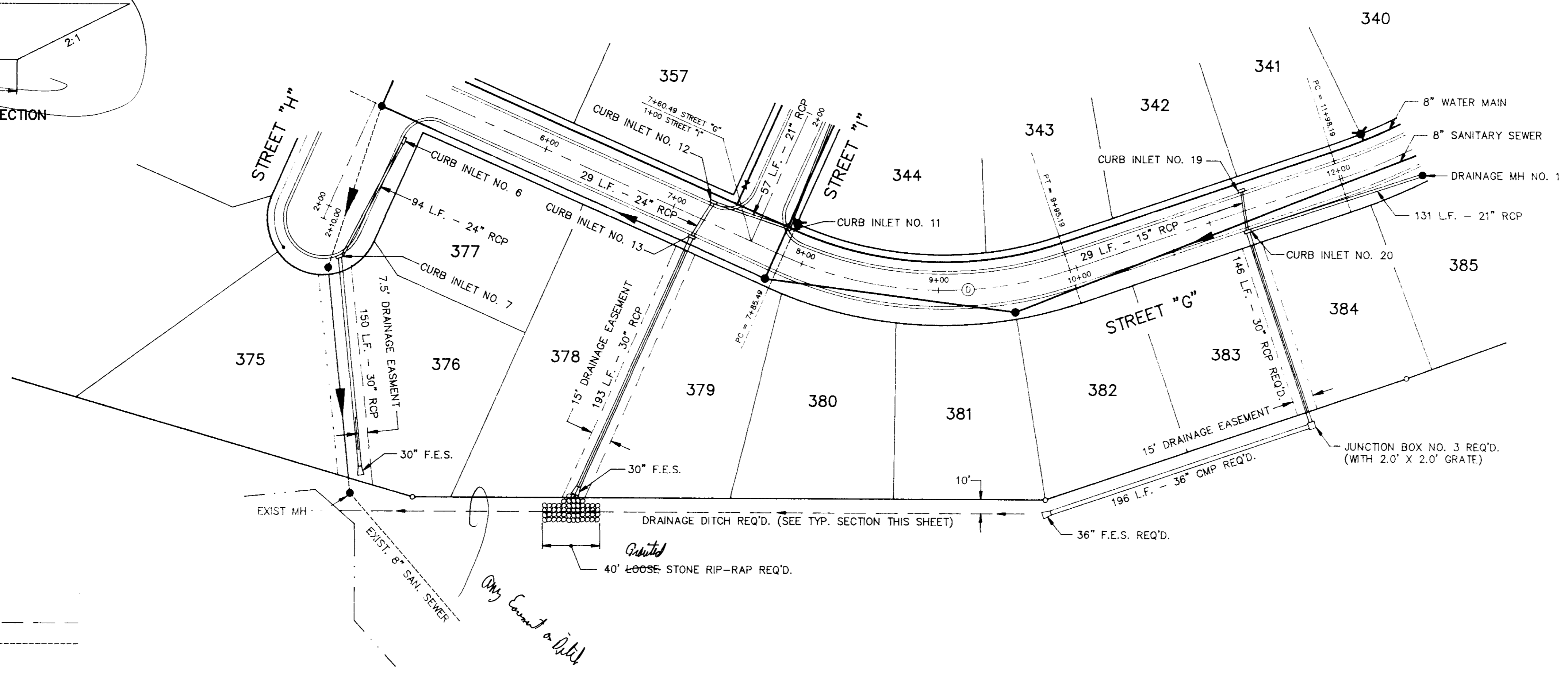
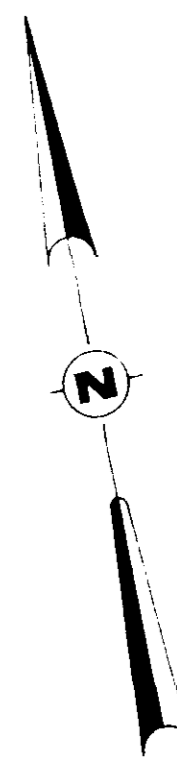
DRAWING NO. 11-PPS

FIELD	REYNOLDS ENGINEERING, INC. POST OFFICE BOX 526 JACKSON, MISSISSIPPI 39205 601-362-4885	PROJECT	LOCATION	DATE	REVISION	BY	DRAWN BY: P.H.W.	SHEET
DATUM		INDIAN GATE II OF DINSMOR DRAINAGE IMPROVEMENTS NORTHEAST CORNER OF LOT 388 TO CREEK	8/74 8/81	23 24-25	91-034	9		



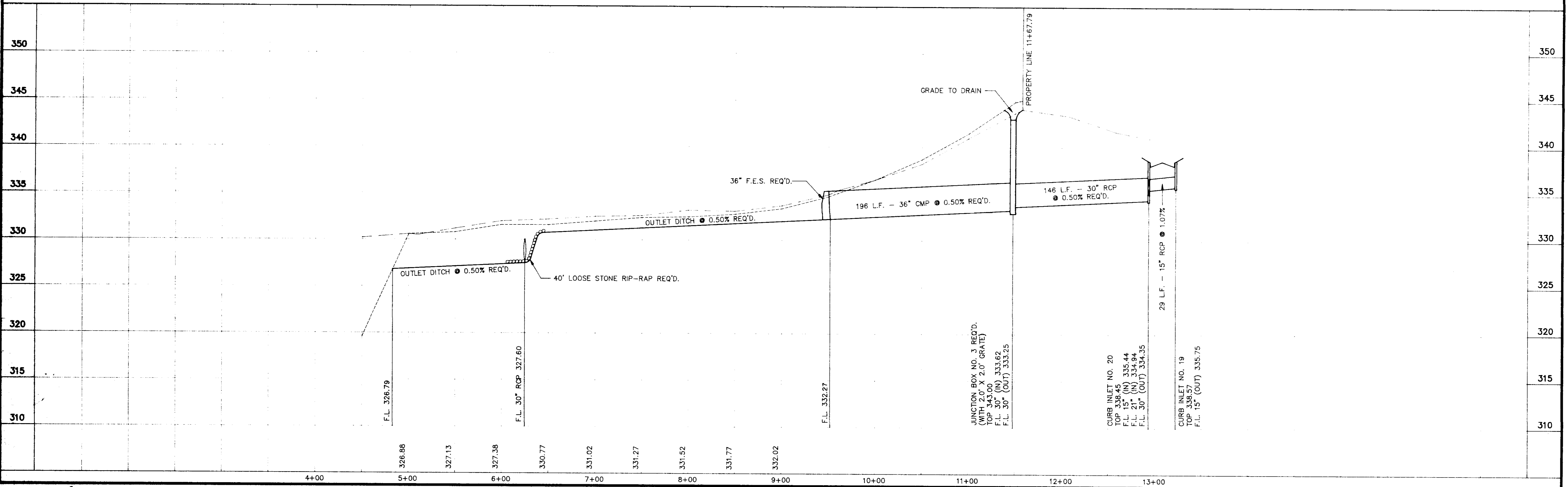
TYPICAL DITCH SECTION

Erosion Protection



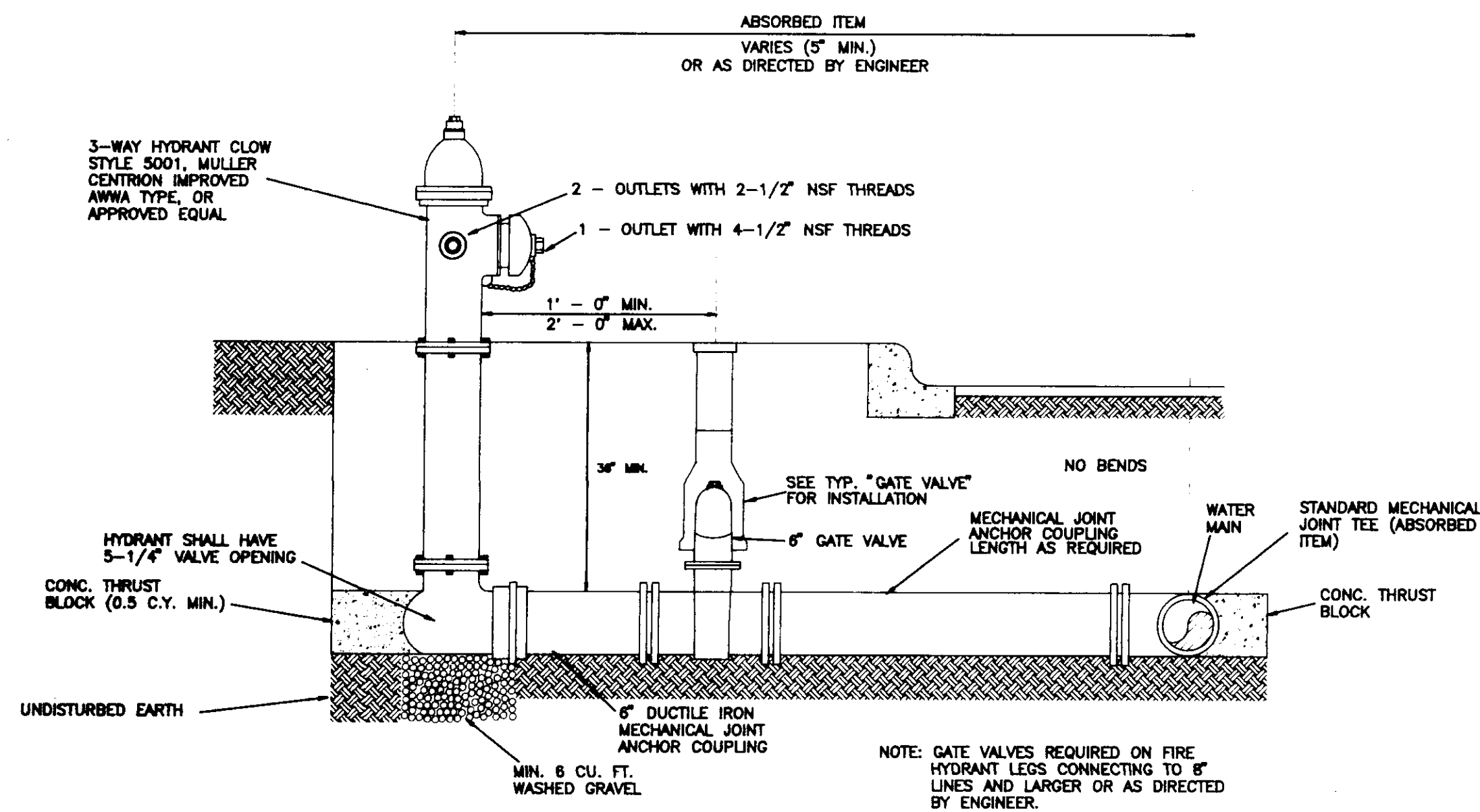
EXISTING GROUND - PROP. LINE - - - - -
 EXISTING GROUND - 25' RIGHT - - - - -

40' Loose Stone Rip-rap

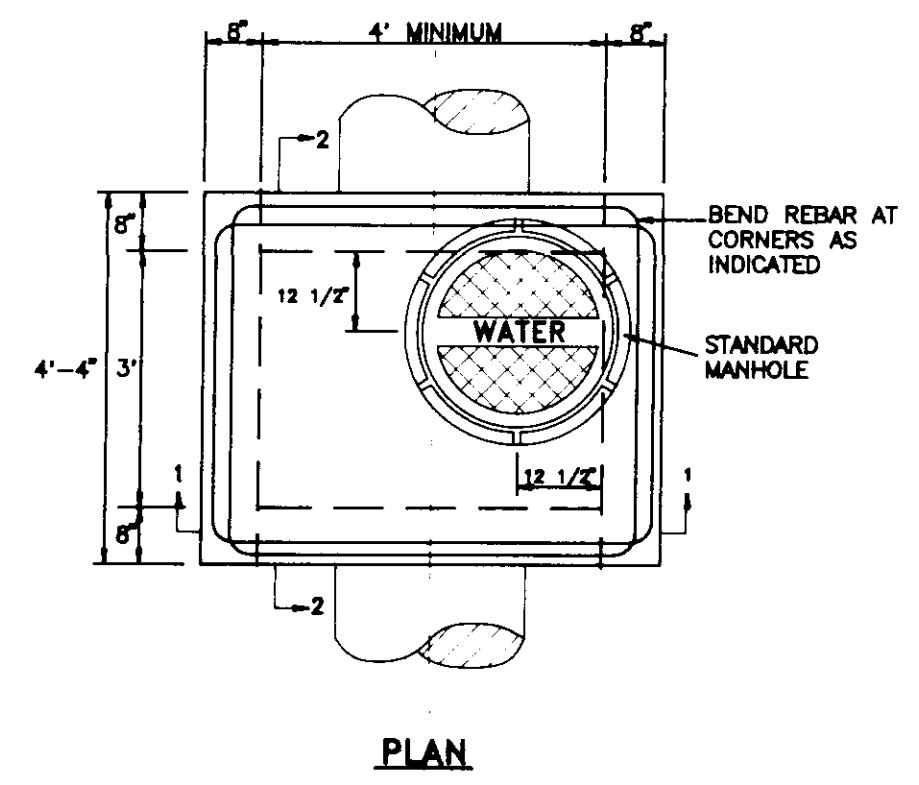


DRAWING NO. 11-PP8

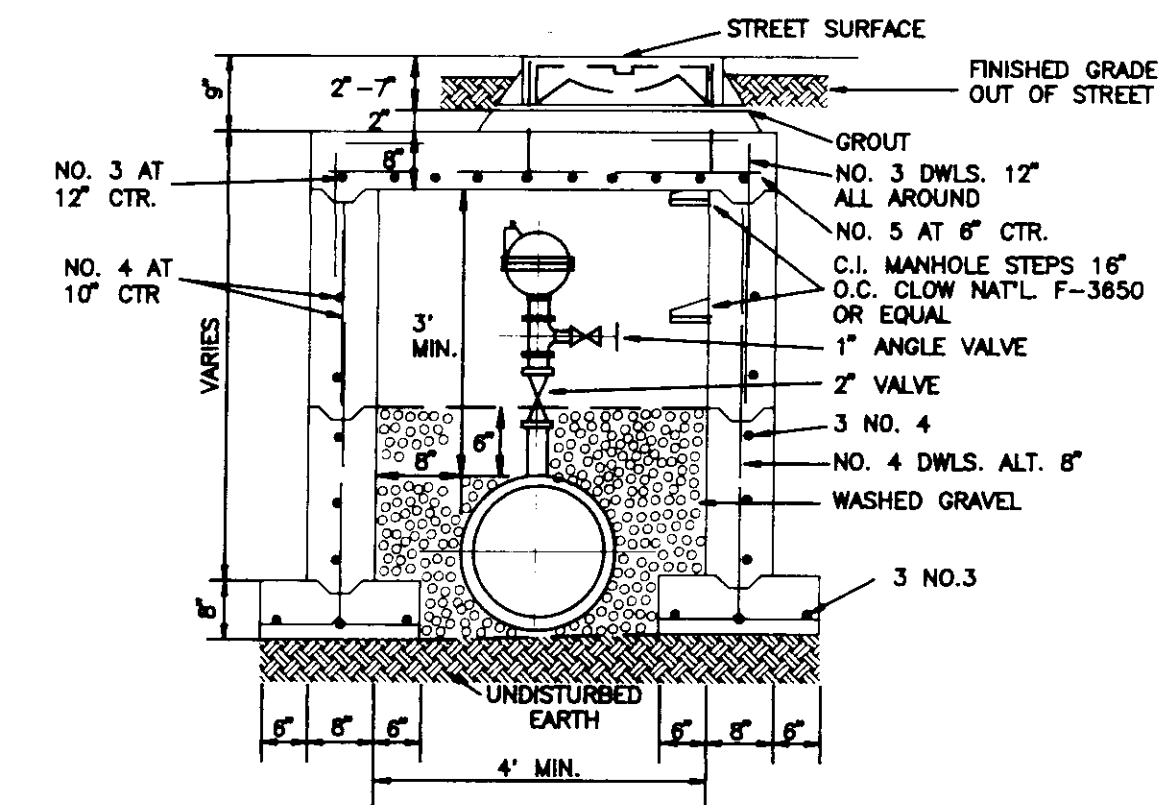
FIELD	REYNOLDS ENGINEERING, INC. POST OFFICE BOX 526 JACKSON, MISSISSIPPI 39205 601-362-4885	PROJECT INDIAN GATE II OF DINSMOR	LOCATION DRAINAGE IMPROVEMENTS LOTS 383 + 384 / DITCH TO CREEK	DATE	REVISION	BY	DRAWN BY: P.H.W. DATE: 2/15/93 HORIZ.: 1"=50' / VERT.: 1"=5' BOOK: 681 PAGE: 24-28 PROJECT NO.: 91-034	SHEET 10
DATUM								



FIRE HYDRANT ASSEMBLY

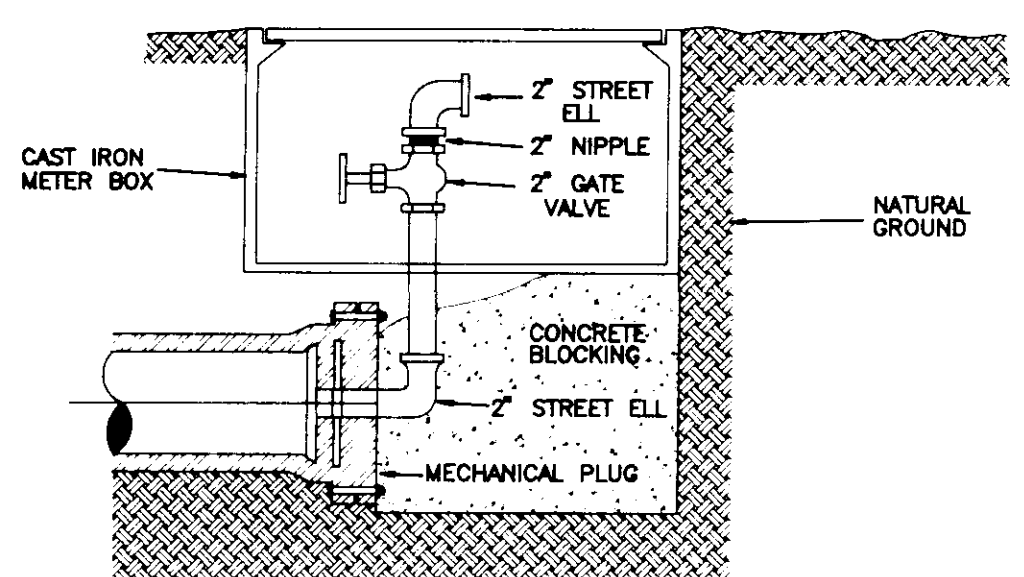


PLAN

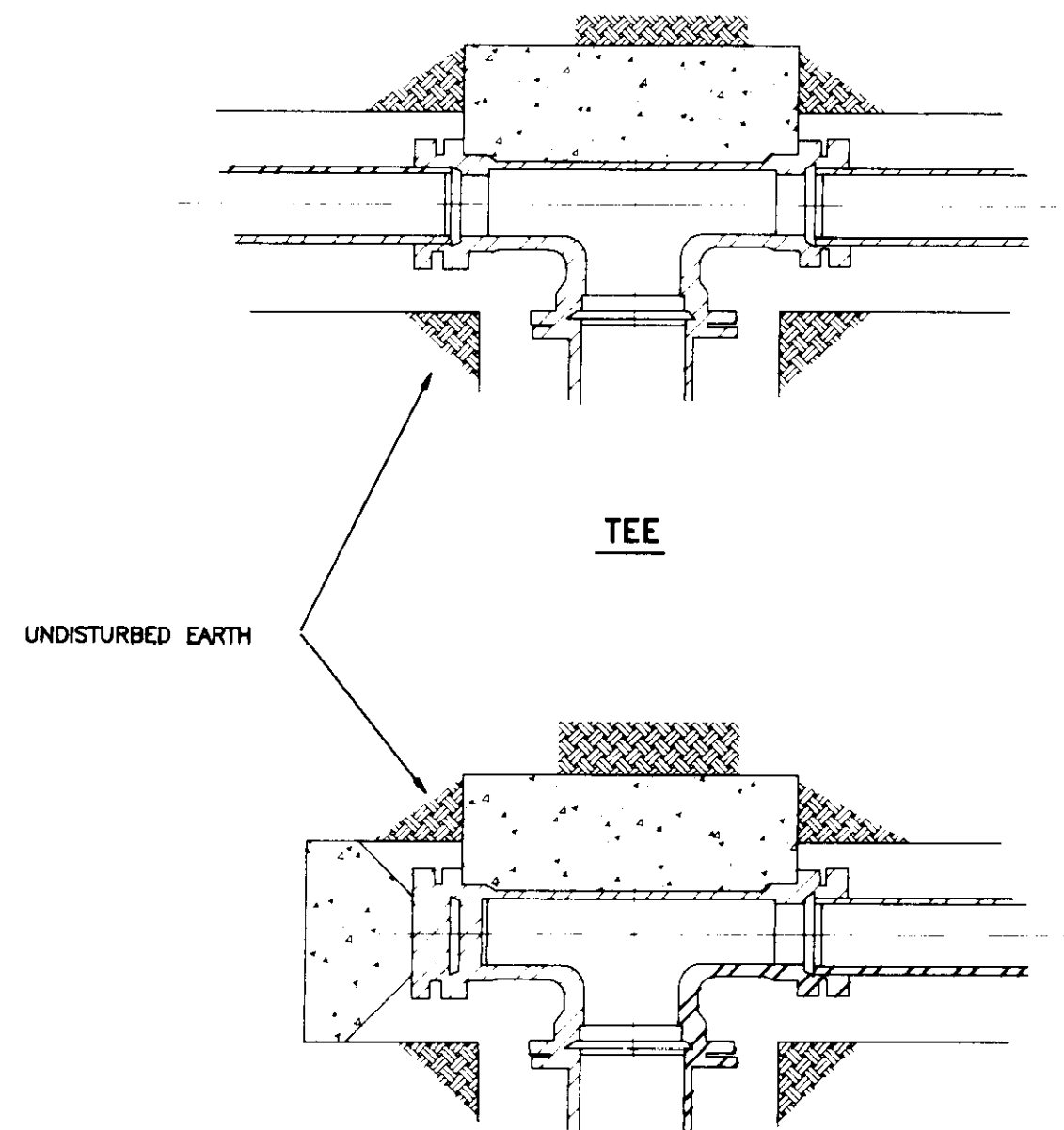


SECTION 1-1

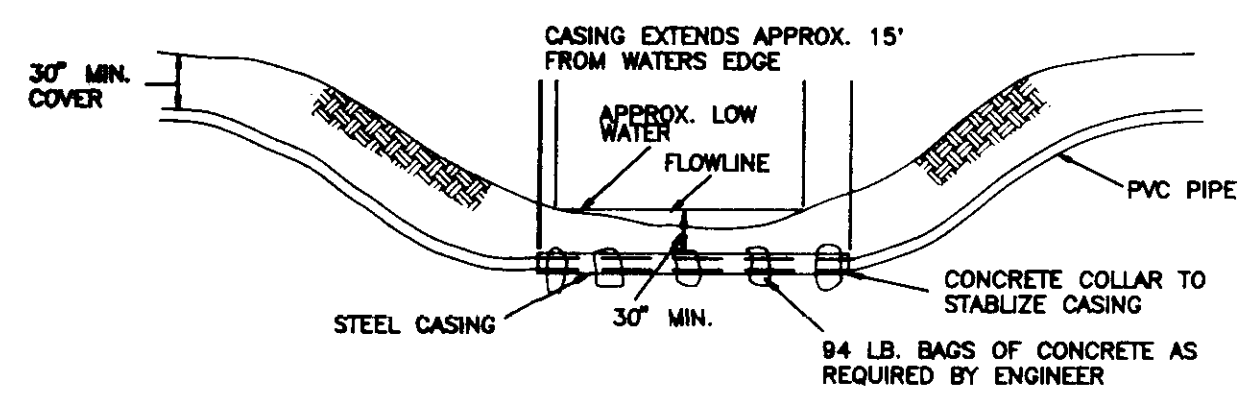
NOTE: ALL MATERIALS FOR CONSTRUCTION OF BLOW-OFF ASSEMBLY SHALL BE OF 2" GALVANIZED FITTINGS & PIPE; 2" GATE VALVE CONSTRUCTED OF BRASS.



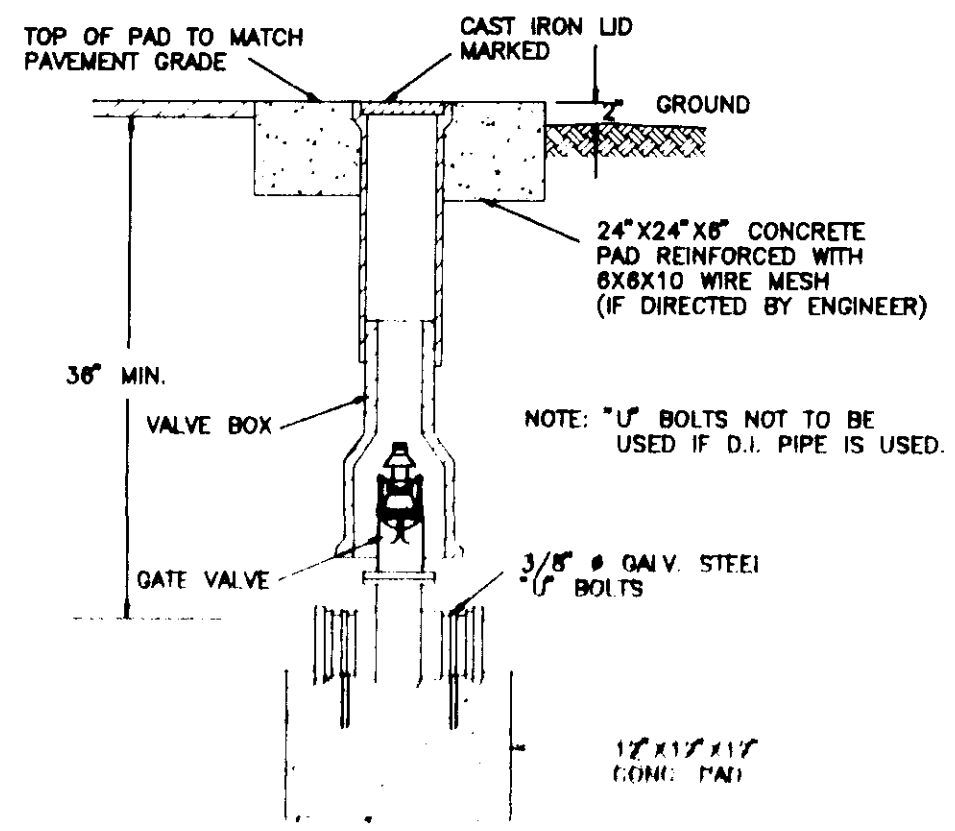
TYPICAL BLOW-OFF ASSEMBLY



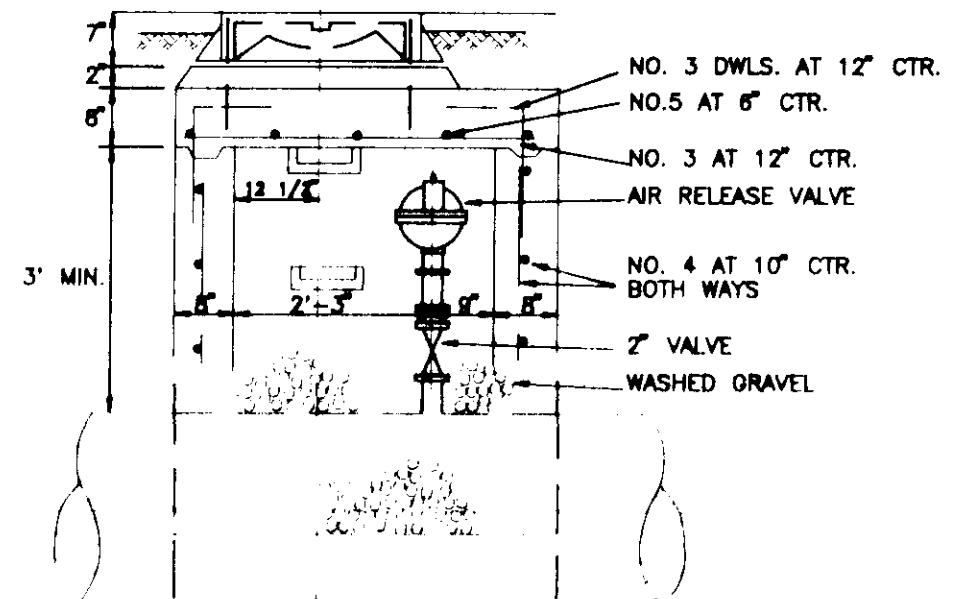
PLUGGED TEE



TYPICAL CREEK CROSSING FOR PVC PIPE

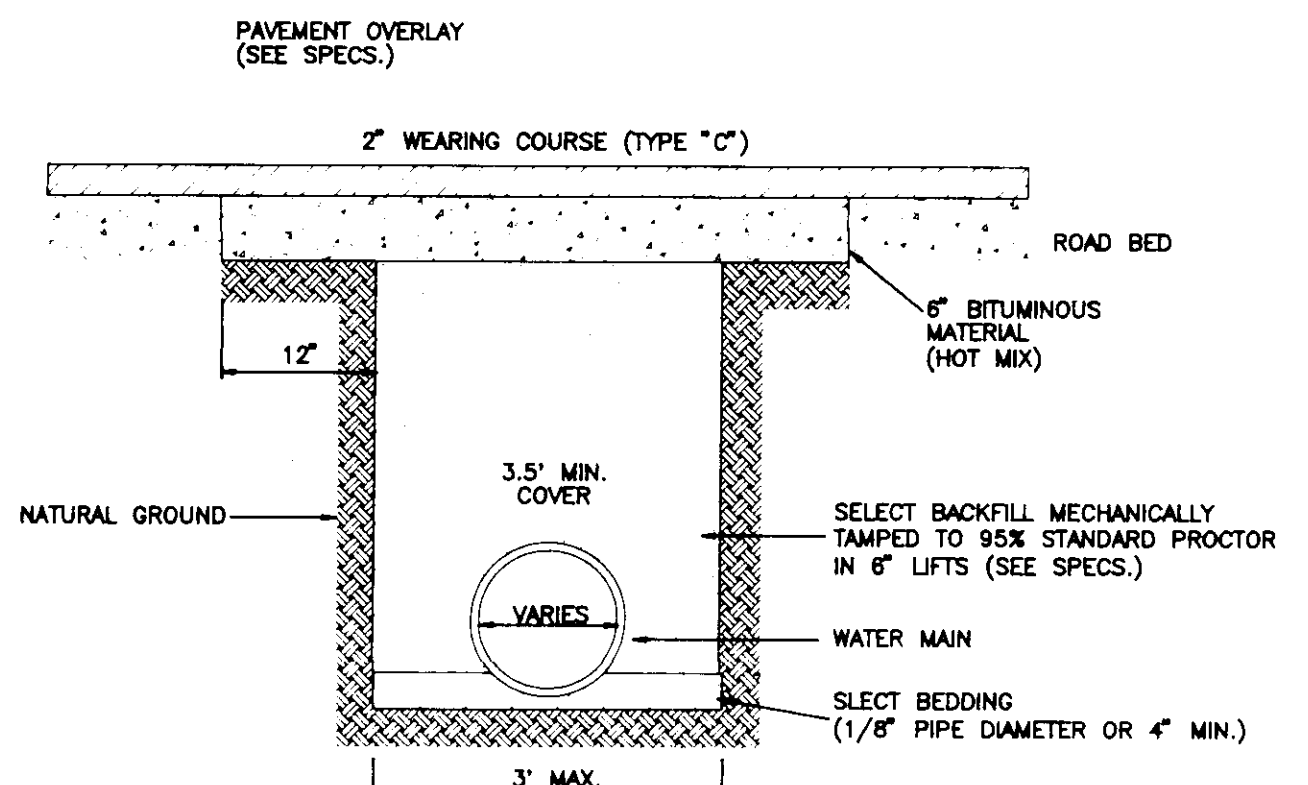


GATE VALVE

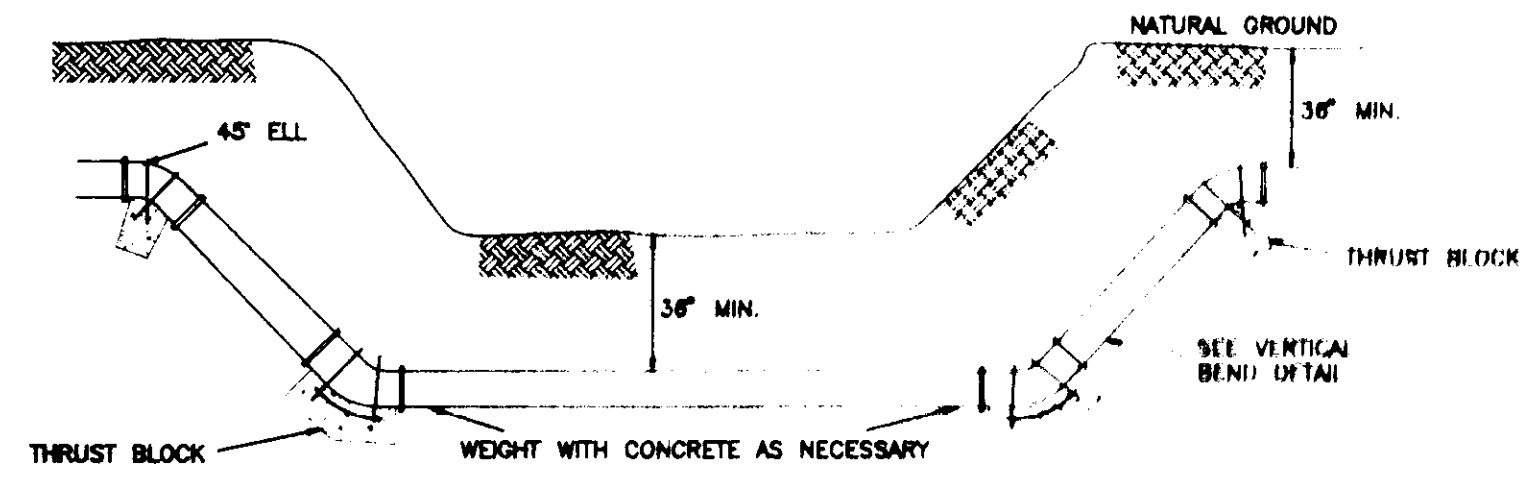


SECTION 2-2

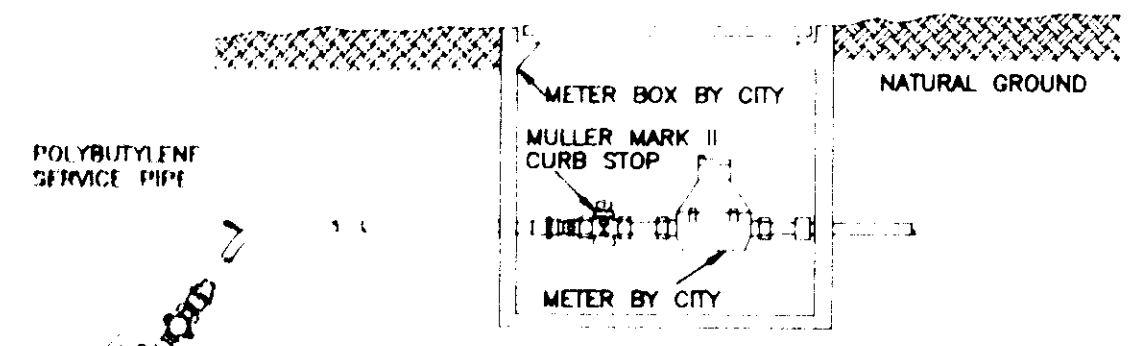
TYPICAL AIR RELEASE VALVE AND MANHOLE



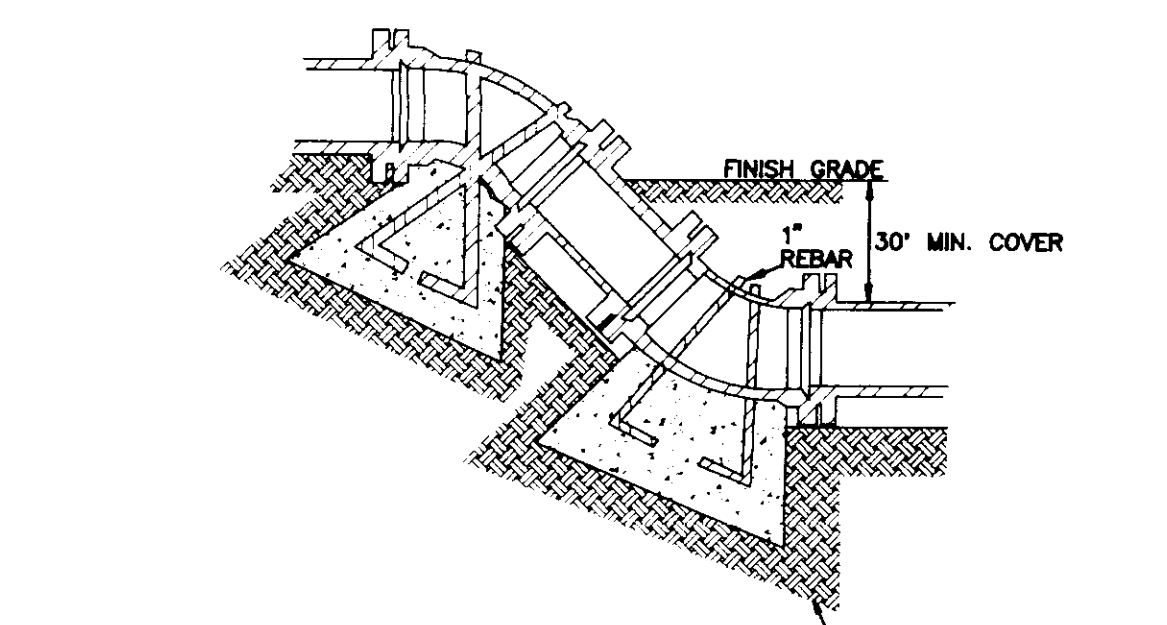
TYPICAL STREET REPAIR



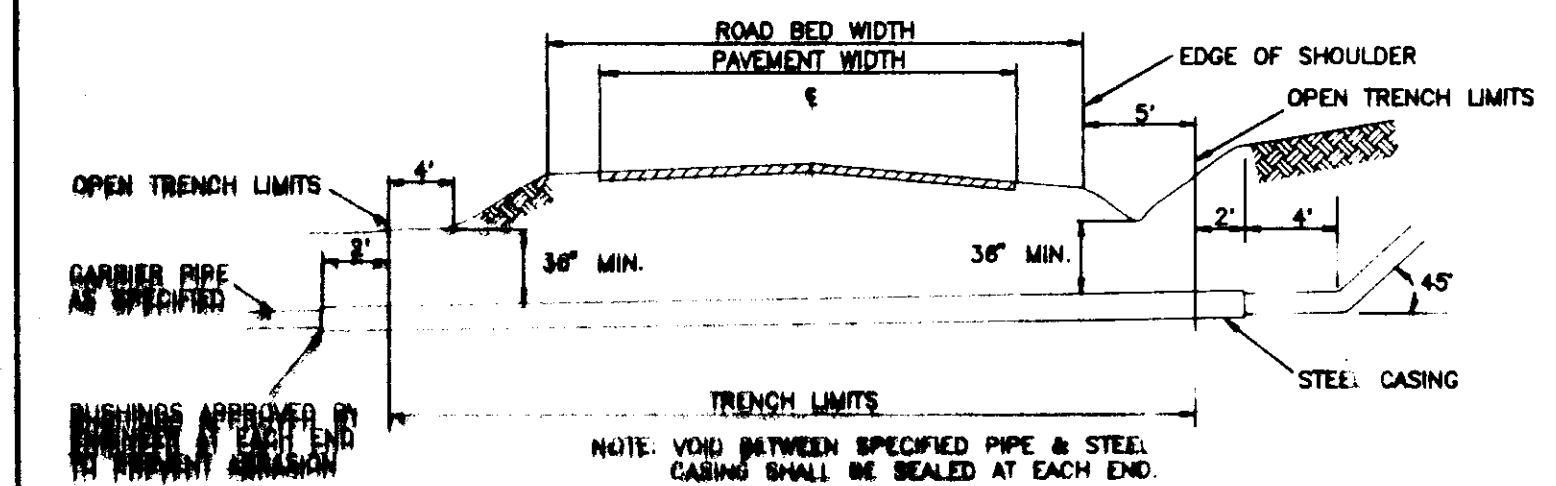
TYPICAL CREEK CROSSING FOR DUCTILE IRON PIPE



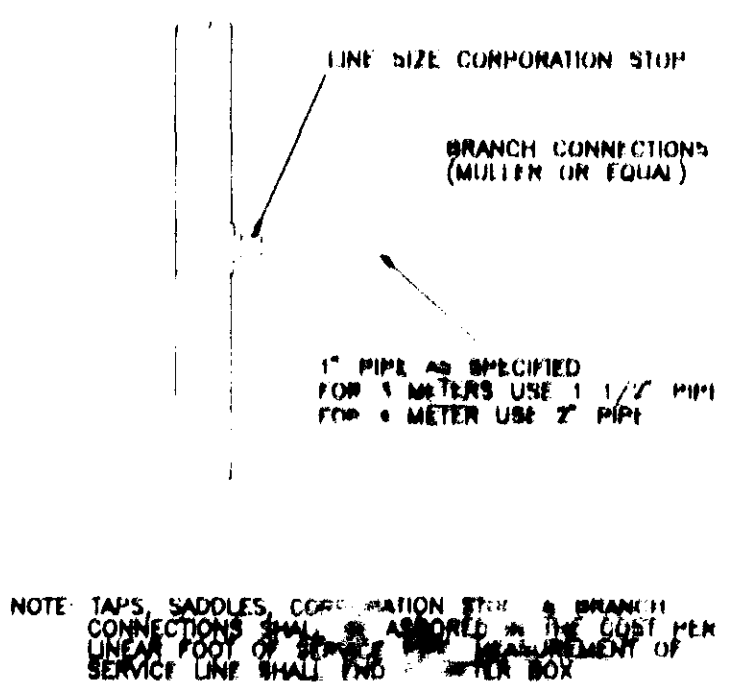
TYPICAL SERVICE ASSEMBLY



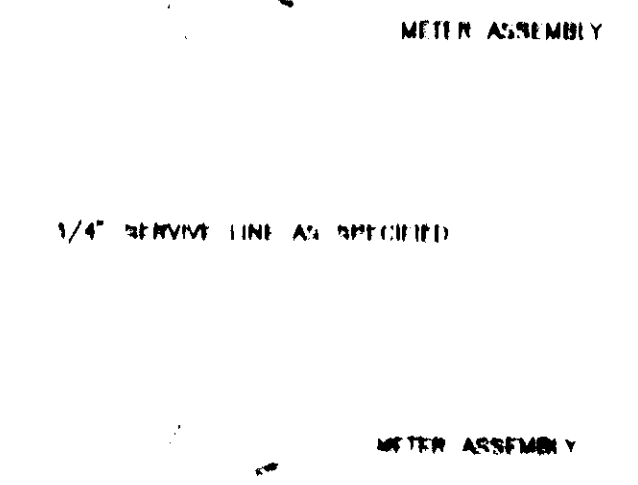
VERTICAL BENDS



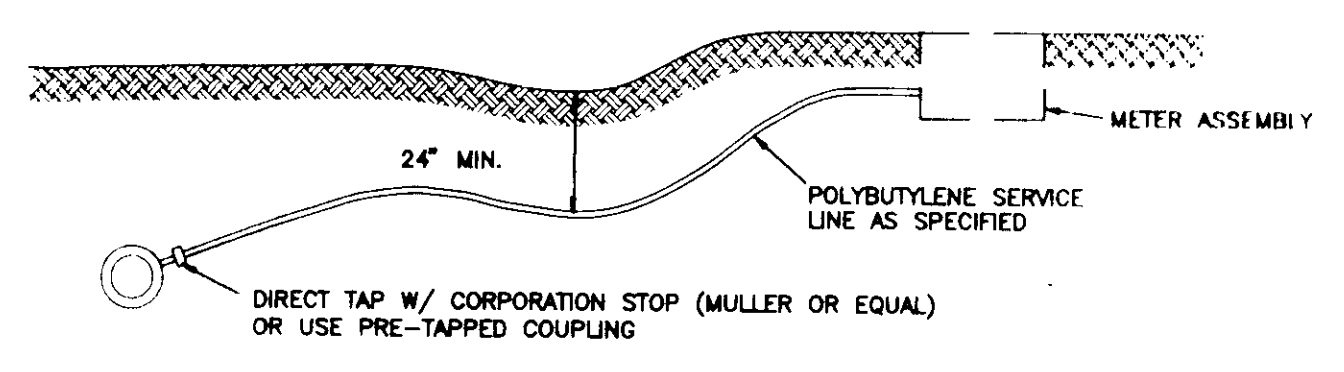
TYPICAL ROAD BORE



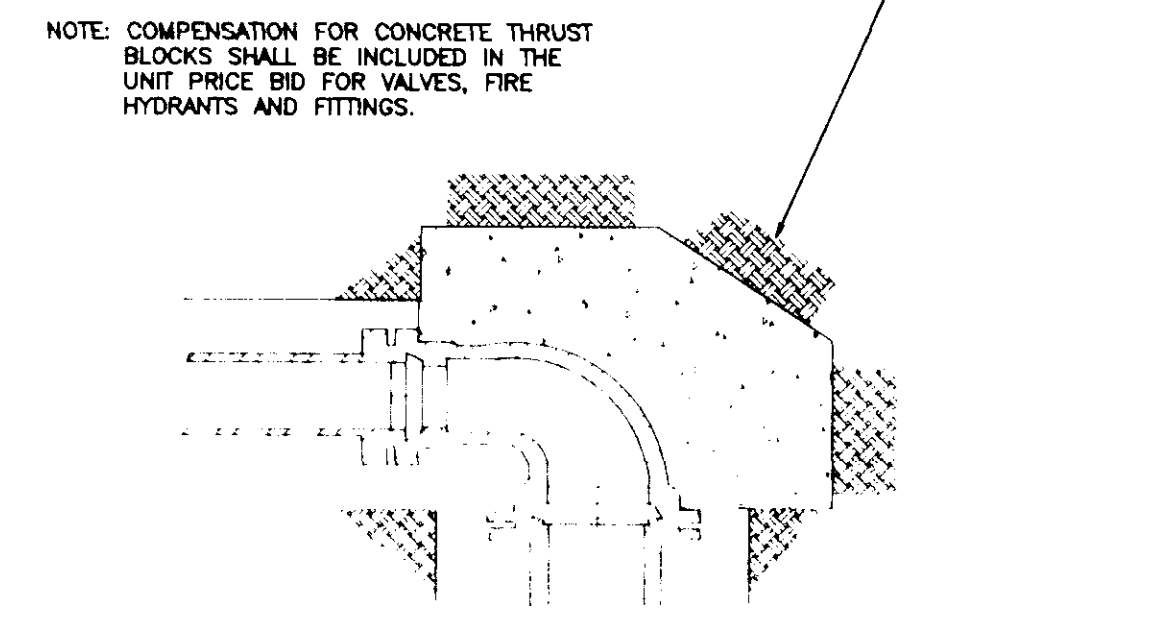
MULTIPLE CONNECTIONS



SERVICE CONNECTIONS



FOR DUCTILE IRON PIPE



TYPICAL BLOCKING ON WATER MAIN

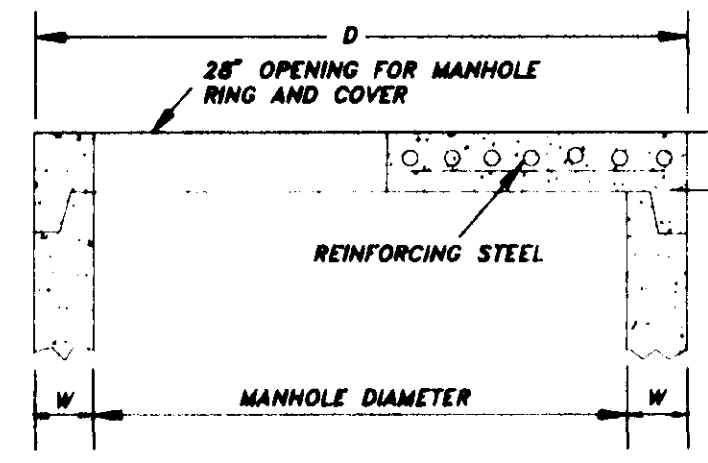
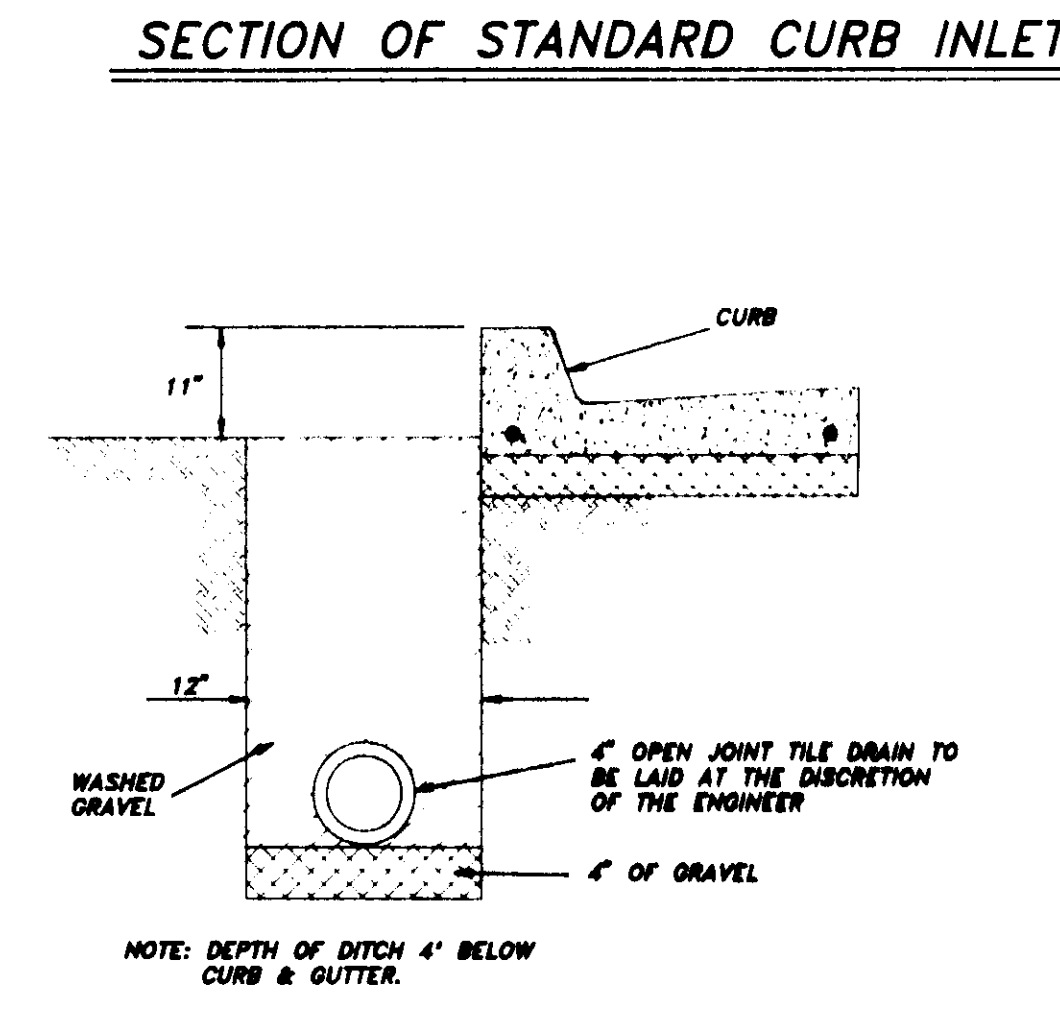
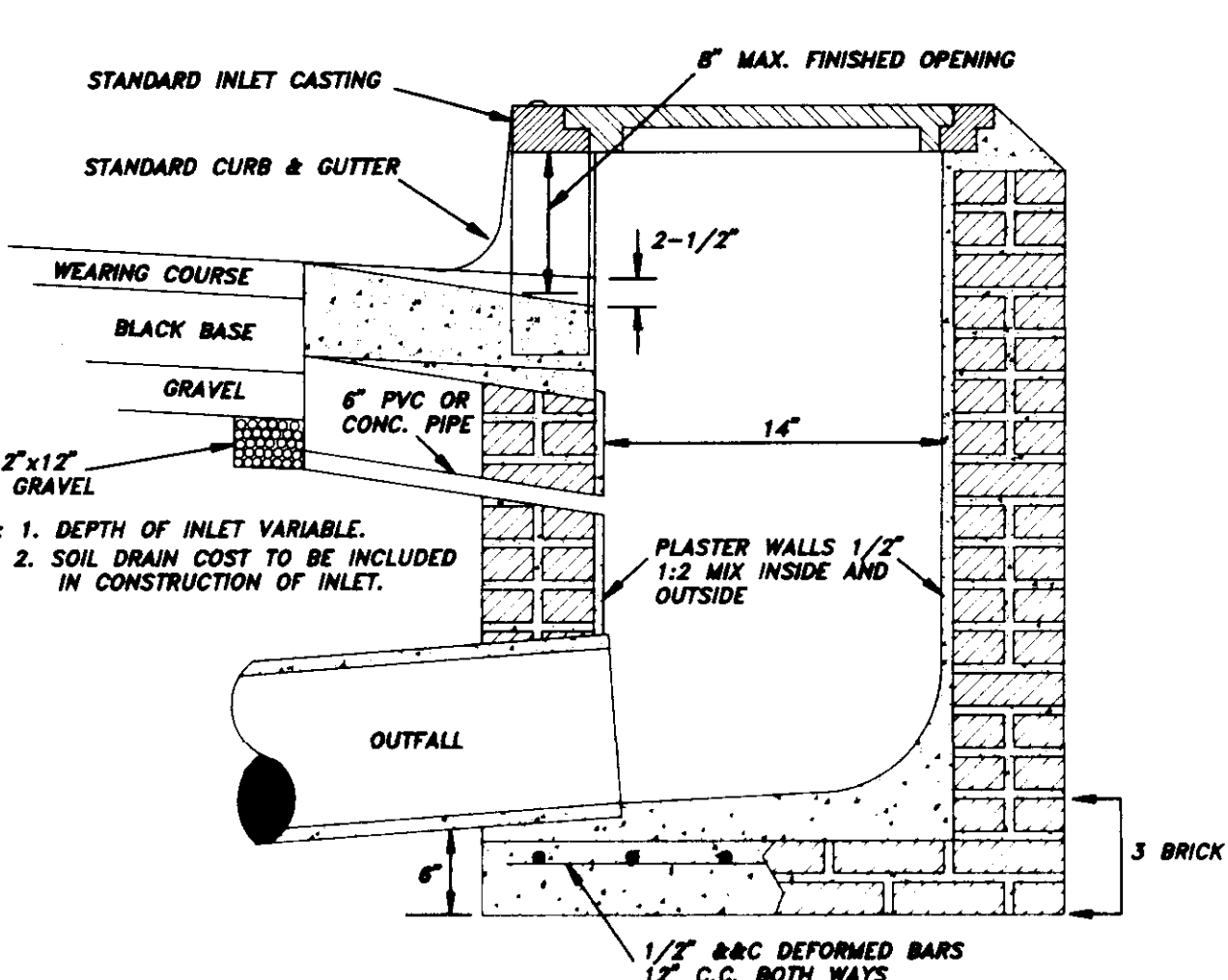
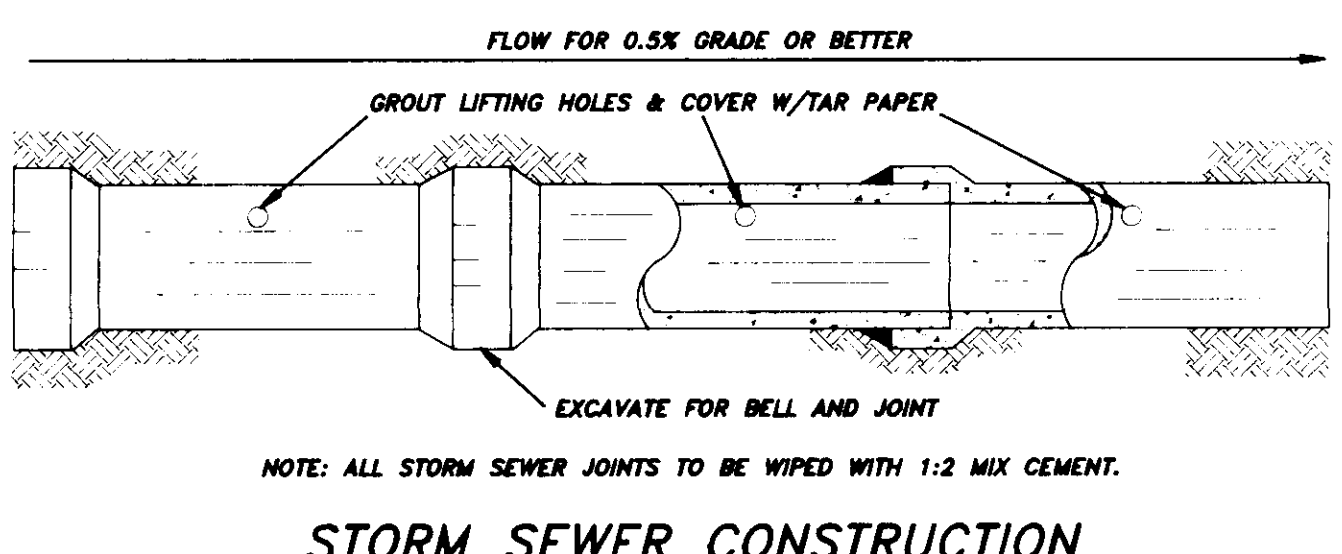
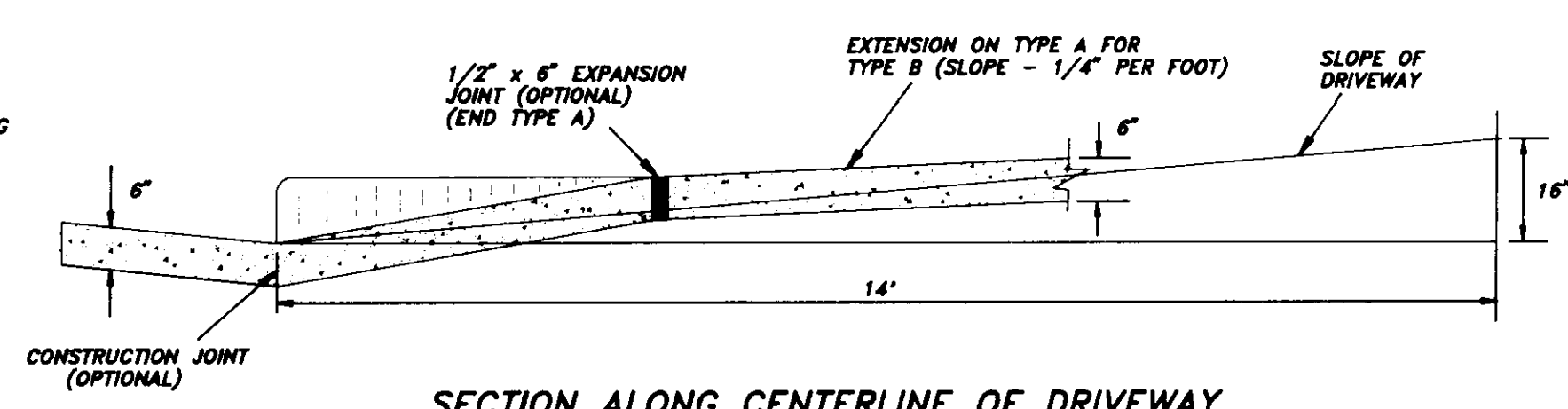
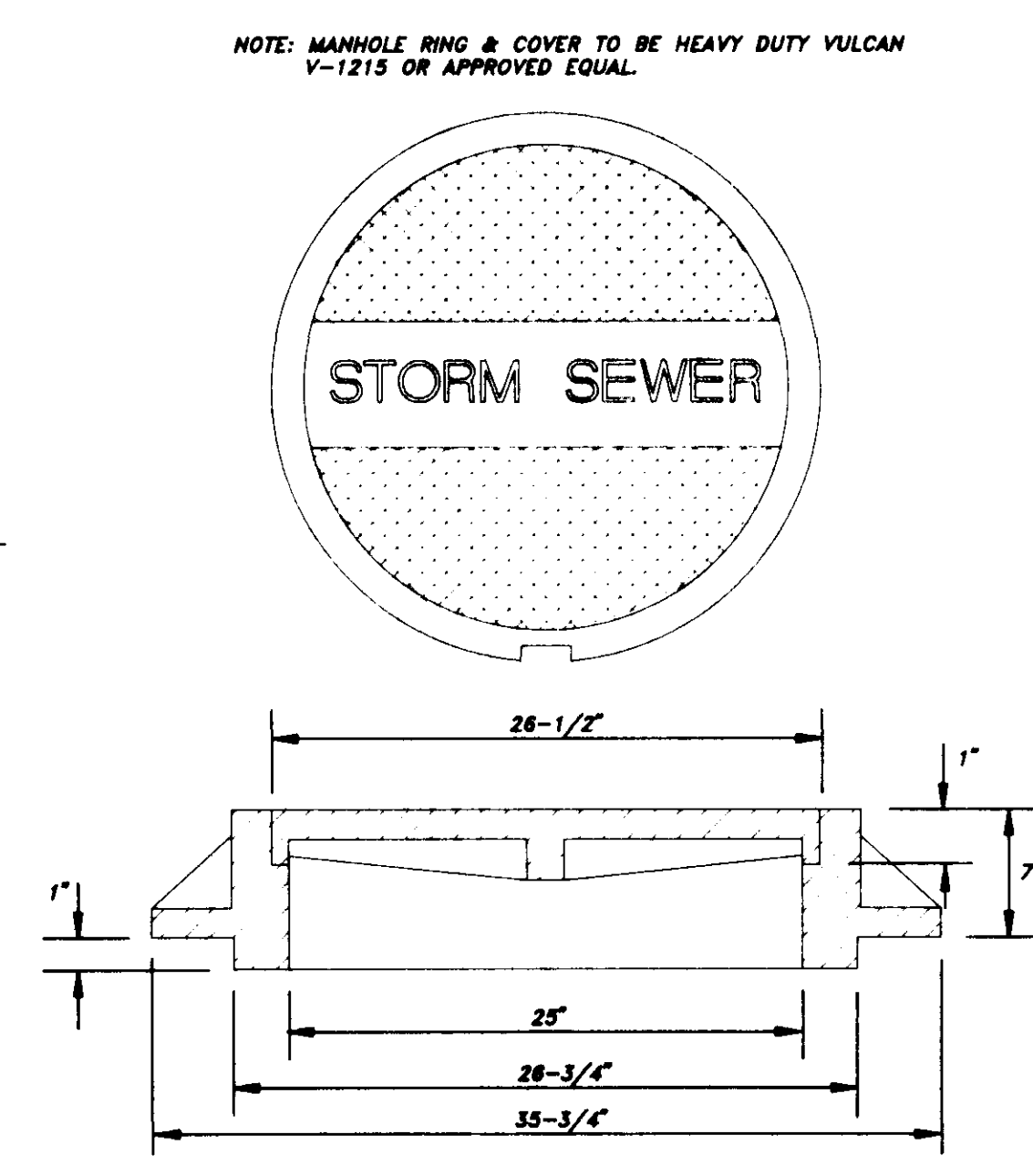
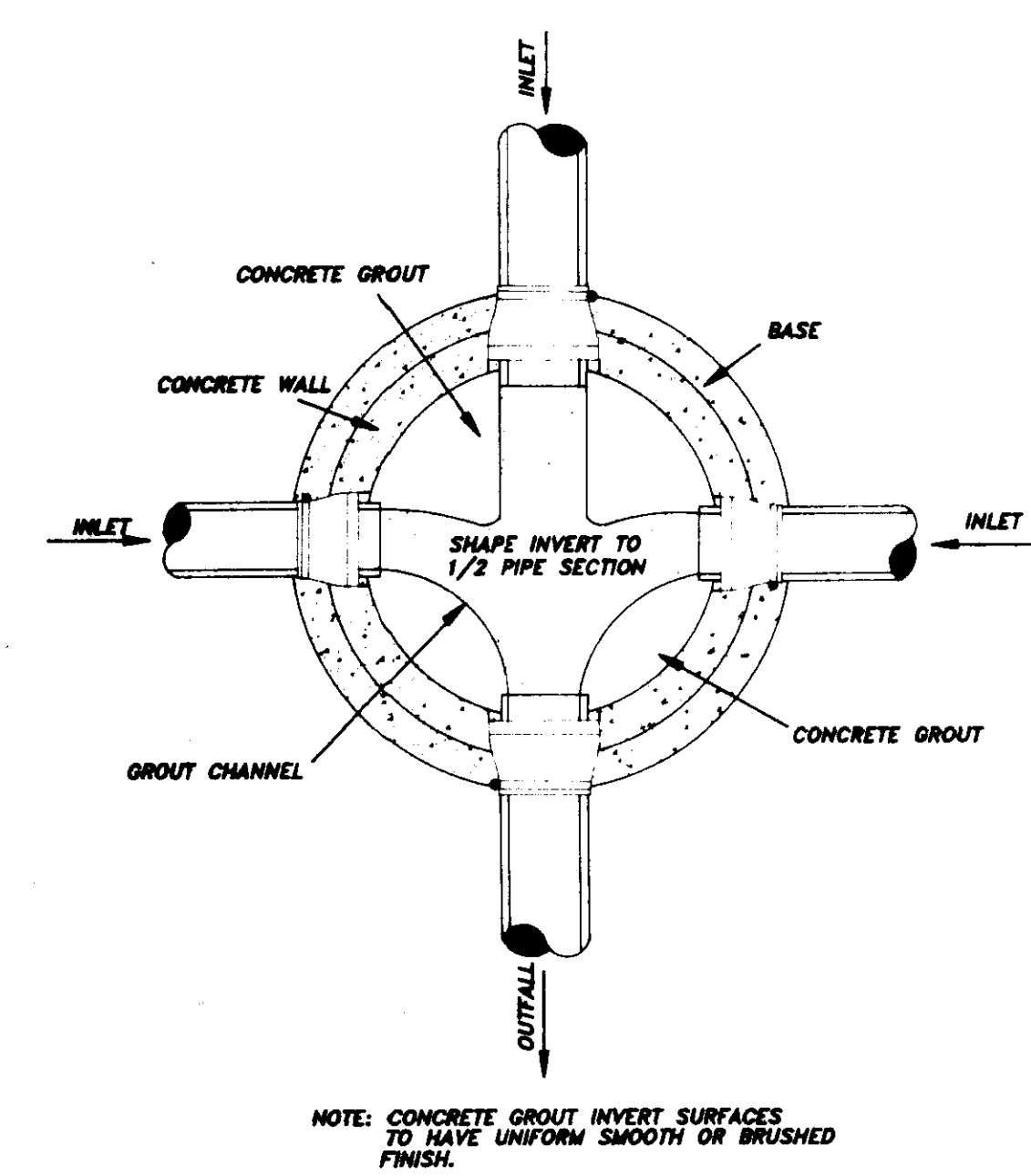
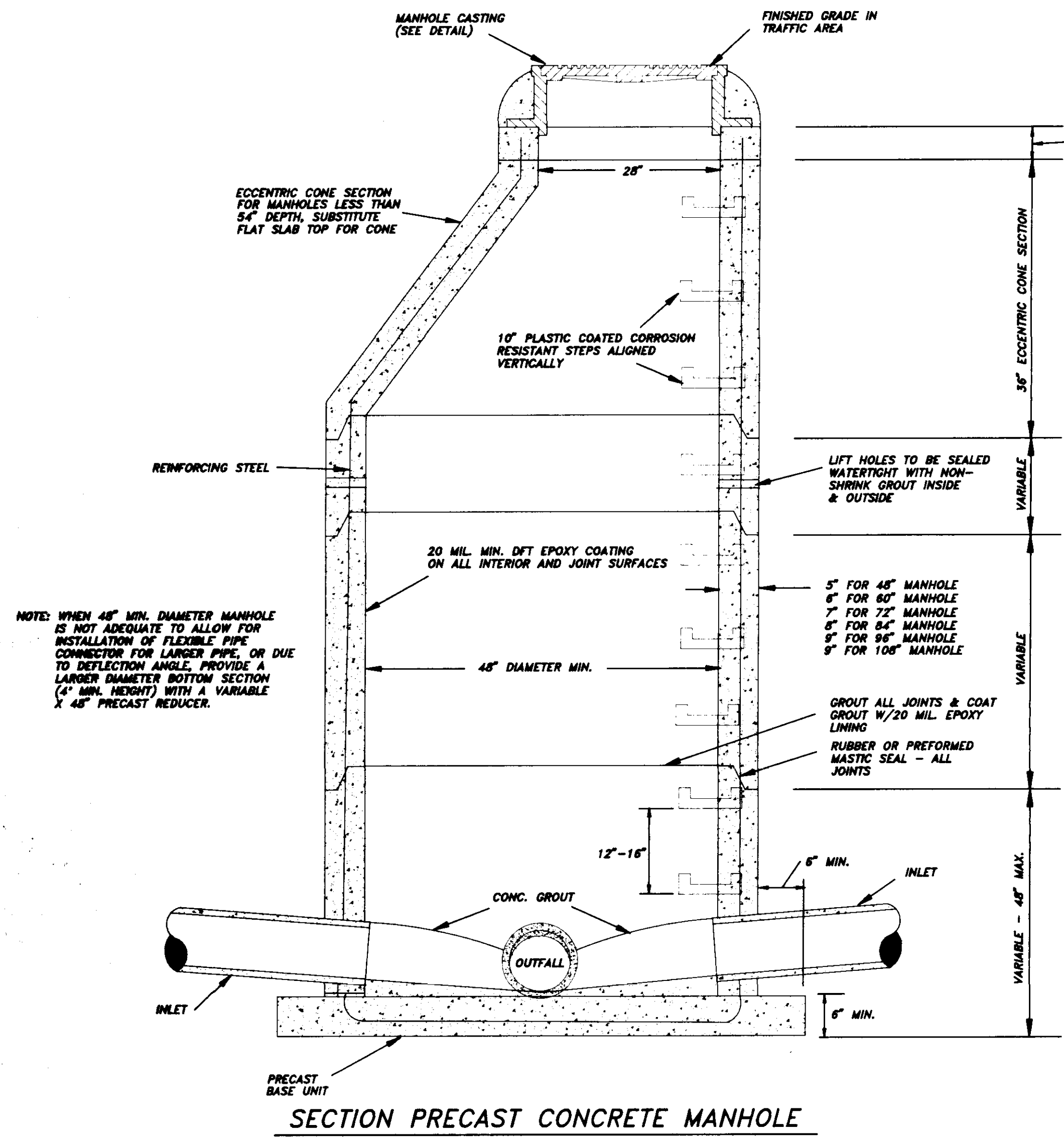
BLANKING AREA IN SQ. FT.

MINIMUM PIPE DIAMETER (IN.)	1/2\"/>				
4	0.0	0.0	0.0	0.0	0.0
6	0.0	0.0	0.0	0.0	0.0
8	0.0	0.0	0.0	0.0	0.0
10	0.0	0.0	0.0	0.0	0.0
12	0.0	0.0	0.0	0.0	0.0

VERTICAL BENDS

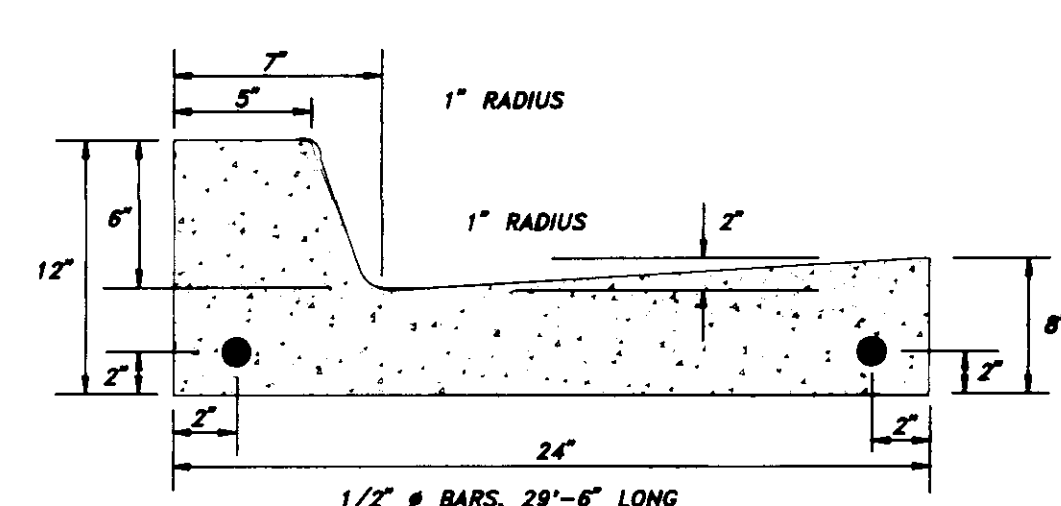
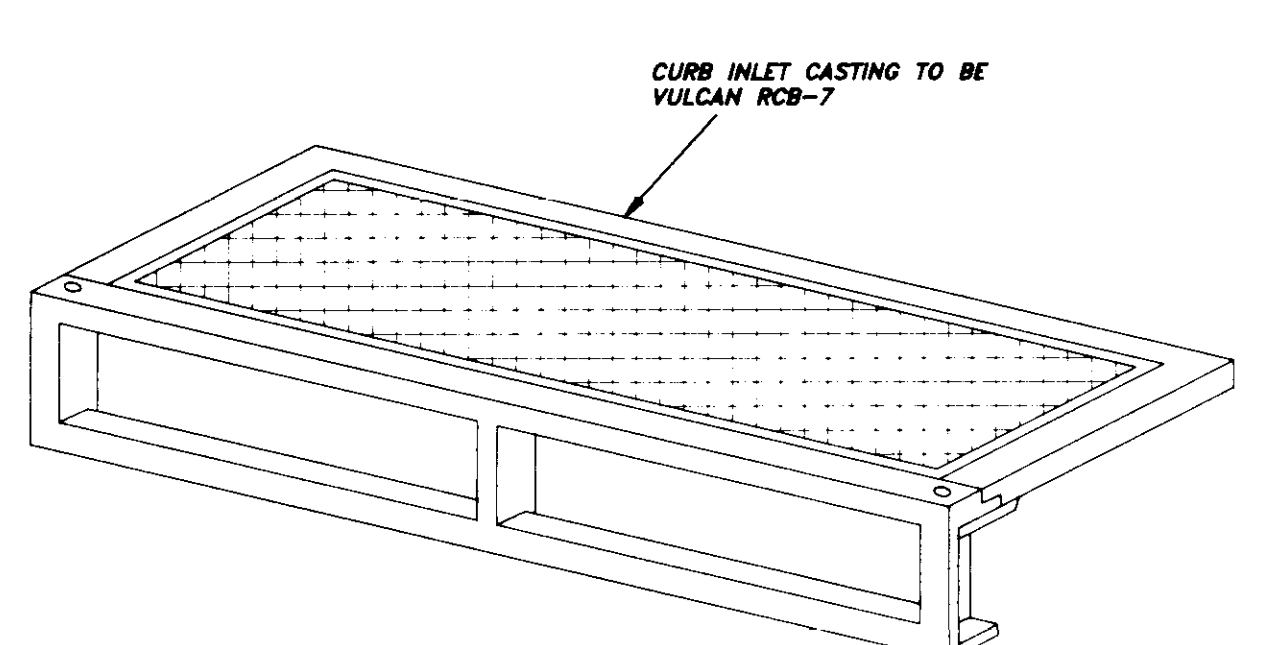
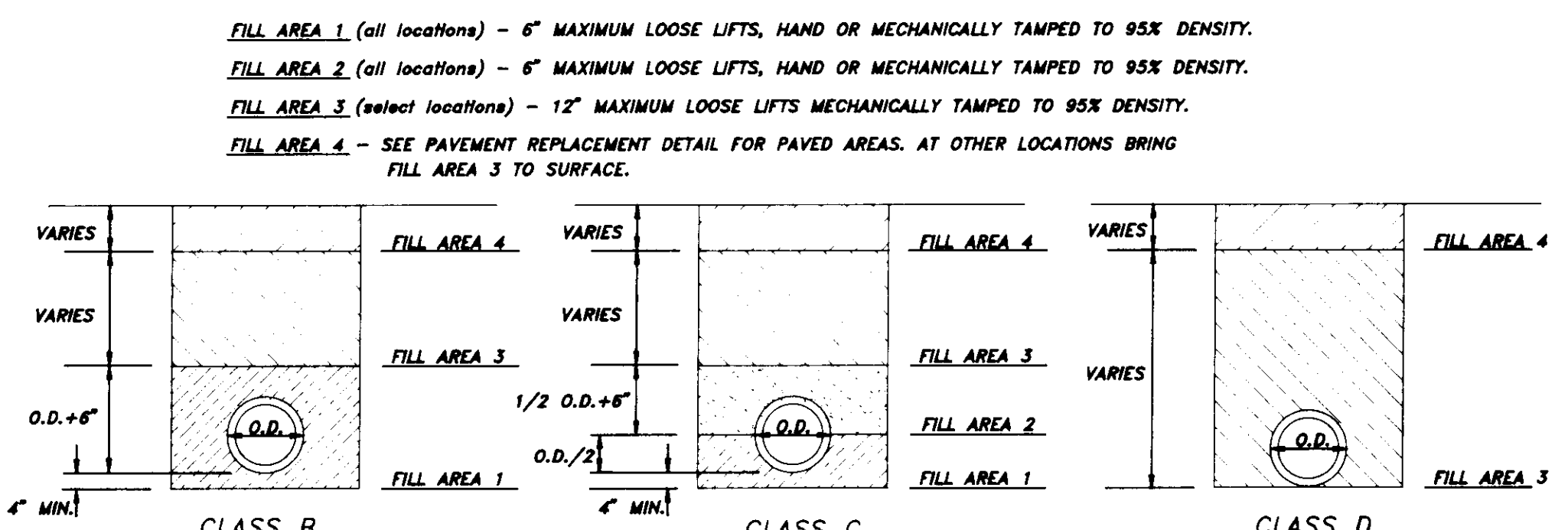
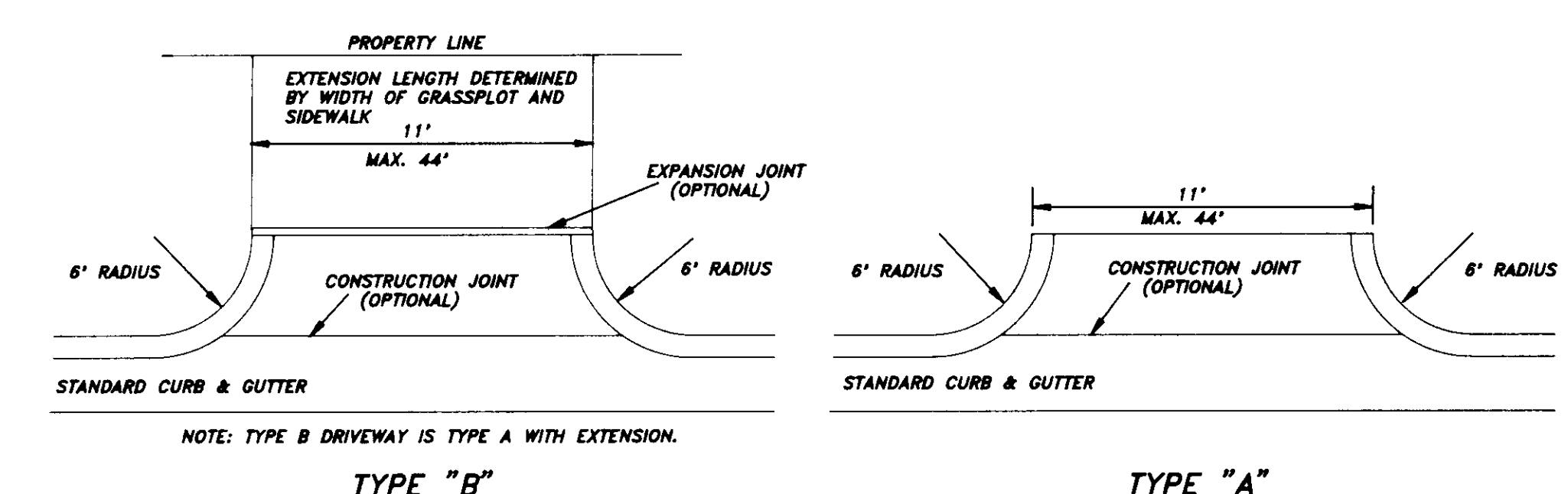
MINIMUM PIPE DIAMETER (IN.)	90\"/>				
4	0.0	0.0	0.0	0.0	0.0
6	0.0	0.0	0.0	0.0	0.0
8	0.0	0.0	0.0	0.0	0.0
10	0.0	0.0	0.0	0.0	0.0
12	0.0	0.0	0.0	0.0	0.0

VALUE OF BLOCKING INDICATED FOR LOADS 150 LB. PER SQ. FT.



DIMENSION TABLE

PIPE DIAMETER	W	D	T
48"	5'	8"	1"
60"	6'	10"	1"
72"	7'	12"	1"
84"	8'	14"	1"
96"	9'	16"	1"
108"	10'	18"	1"



- NOTES: 1. ALL CURBS, GUTTERS & DRIVEWAYS TO BE CONSTRUCTED OF 3000 LB. CONCRETE.
2. 2 - 3/4" DOWEL BARS, 15" LONG REQ. AT EXPANSION JOINTS. THEY SHALL BE HELD IN PLACE BY APPROVED CHAIRS OR SUPPORTS AND 1/2" EXPANSION MATERIALS.

