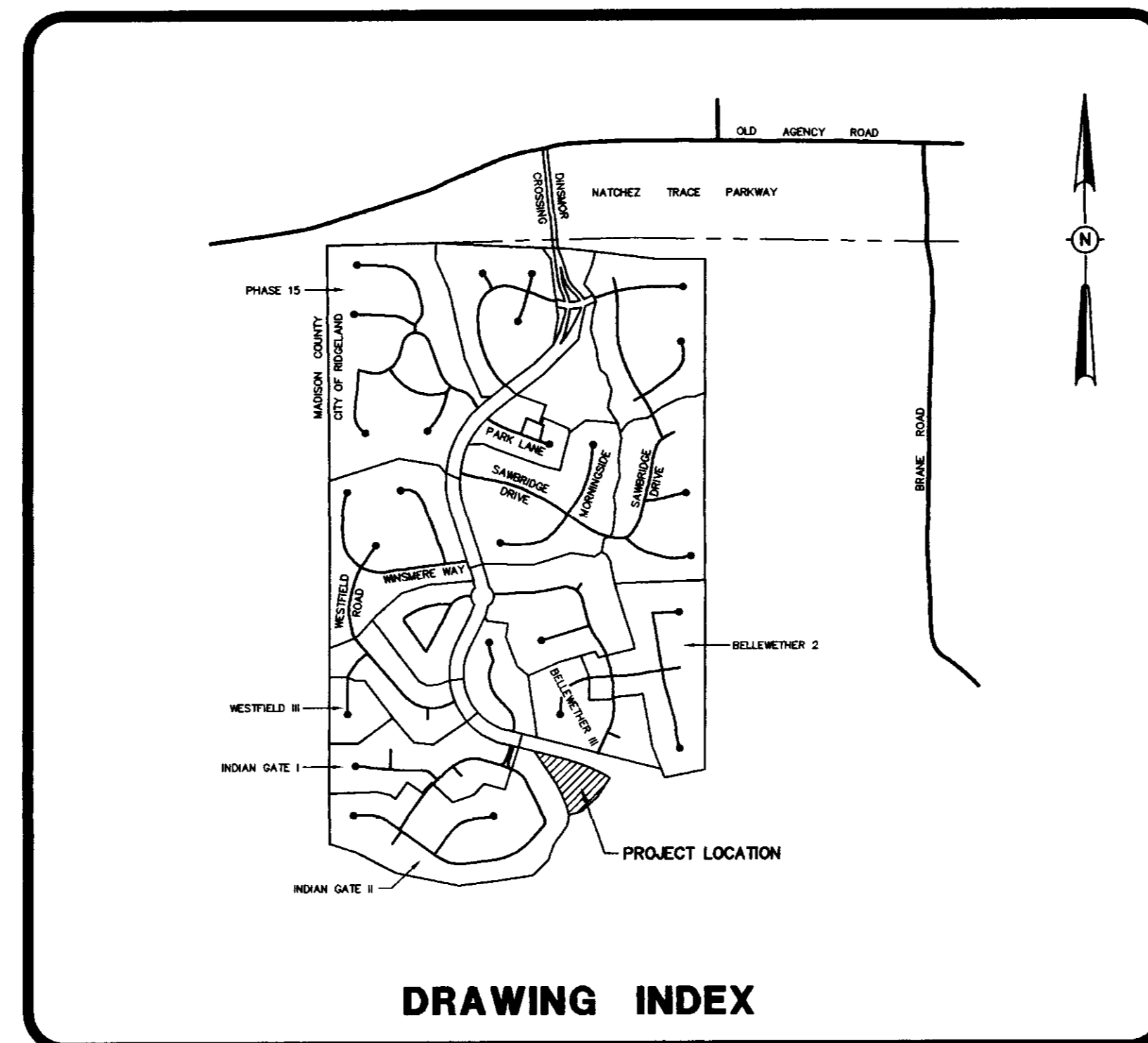


RECORD DRAWINGS FOR TUSCAN VILLAS OF DINSMOR



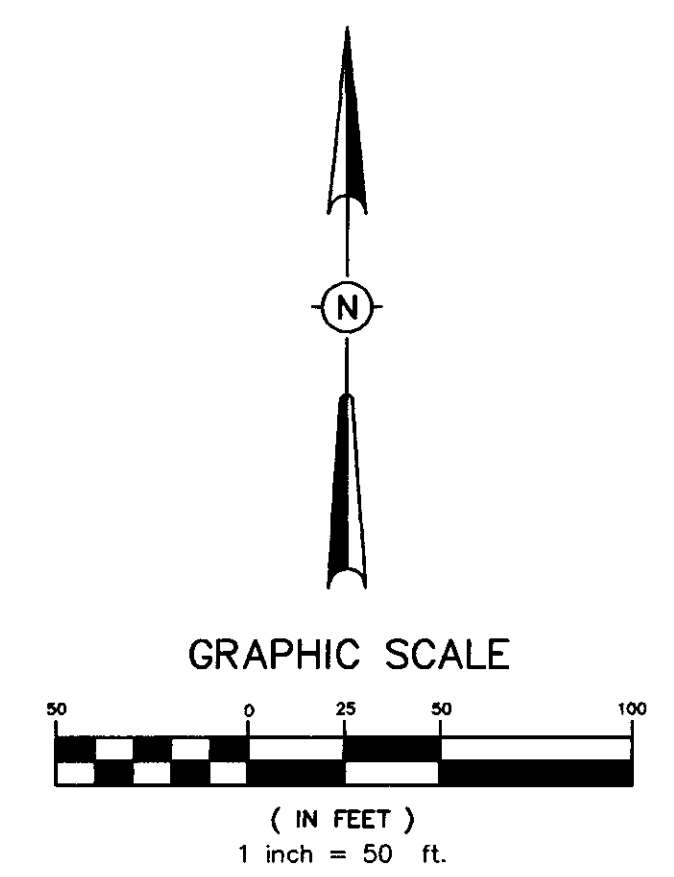
DRAWING INDEX

DRAWING INDEX	
1 -	COVER SHEET
2 -	GEOMETRIC LAYOUT
3 -	DRAINAGE, GRADING AND UTILITY LAYOUT
3A -	AS-BUILT SEWER AND WATER
4 -	EROSION, SEDIMENT AND STORMWATER CONTROL PLAN
5 -	PLAN AND PROFILE - SANITARY SEWER OUTFALL

PWP 417



DRAWING NO. 16-CVR



CURVE DATA

① Δ = 15°46'15"	② Δ = 15°46'15"
R = 1133.02'	R = 1033.02'
D = 5.05691'	D = 5.54643'
T = 156.93'	T = 143.07'
L = 311.87'	L = 284.34'
③ Δ = 23°15'40"	④ Δ = 131°19'58"
R = 20.00'	R = 32.00'
D = 286.47889'	D = 179.04944'
T = 4.12'	T = 70.76'
L = 8.12'	L = 73.35'
⑤ Δ = 122°43'00"	⑥ Δ = 46°49'42"
R = 22.00'	R = 34.64'
D = 260.43528'	D = 165.40556'
T = 40.28'	T = 143.07'
L = 47.12'	L = 284.34'

- CURB AND GUTTER**
(RADIUS AT BACK OF CURB)
- ① 15.00' RADIUS
 - ② 20.00' RADIUS
 - ③ 46.64' RADIUS

NOTES:
 1. AREA = 4.157 ACRES OF LAND (MORE OR LESS)
 2. DIMENSIONS ALONG CURVES ARE CHORD DISTANCES.

DRAWING NO. 16-GE0

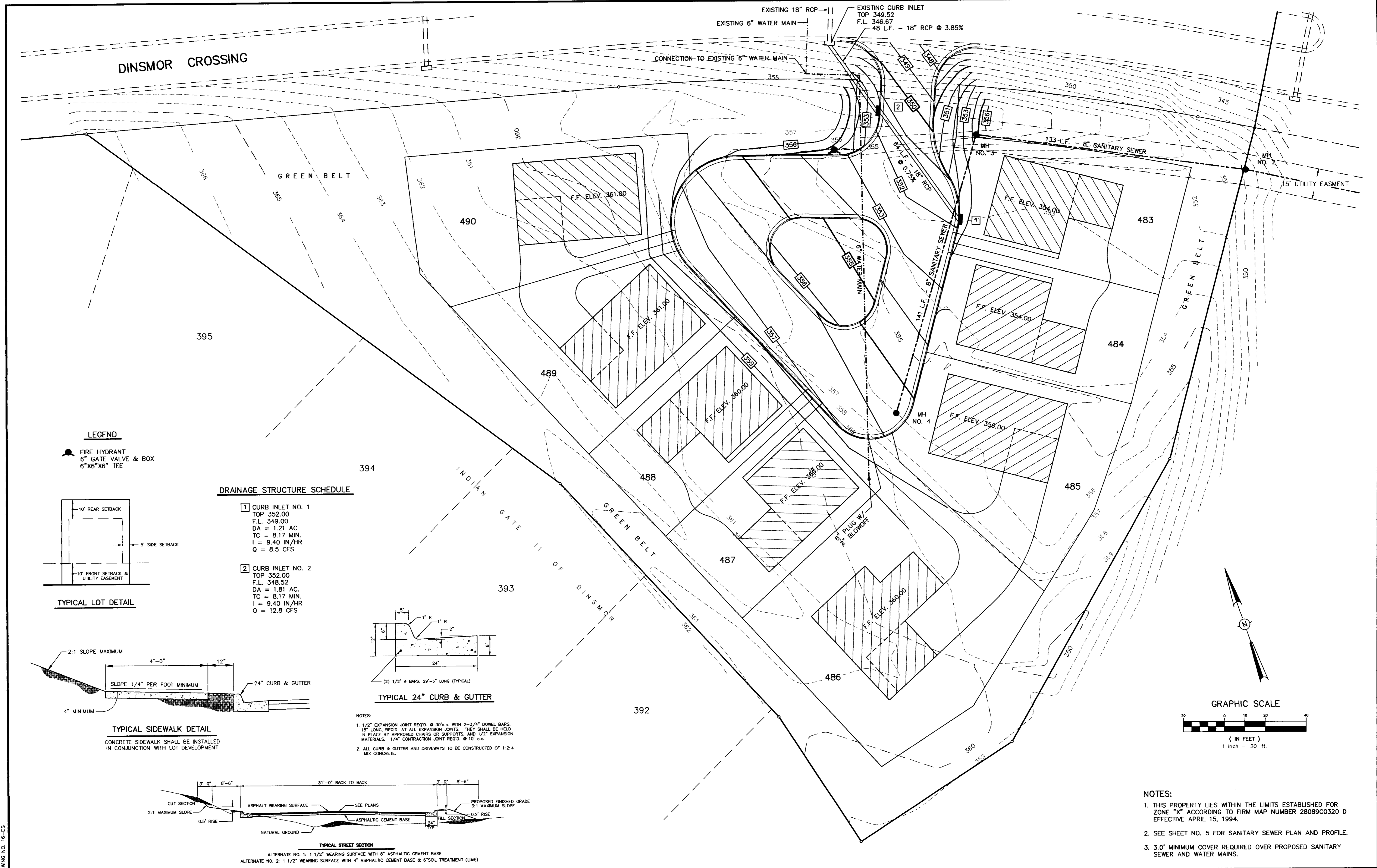
H D LANG AND ASSOCIATES, INC.
 POST OFFICE BOX 16085 JACKSON, MISSISSIPPI 39236
 601-362-4886

PROJECT: TUSCAN VILLAS OF DINSMOR

DESCRIPTION: GEOMETRIC LAYOUT

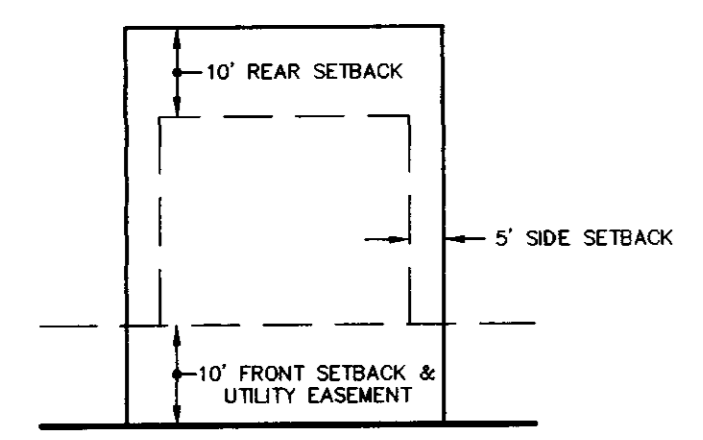
DATE	REVISION	BY	DRAWN BY: P.H.W.
7/29/30	RECORD DRAWING	LL.M.	DATE: 7/22/96
8/11/30	R.O.W. UPDATE	LL.M.	SCALE: 1"=50'
			BOOK: PAGE:
			PROJECT NO.: 91-034

SHEET
2



LEGEND

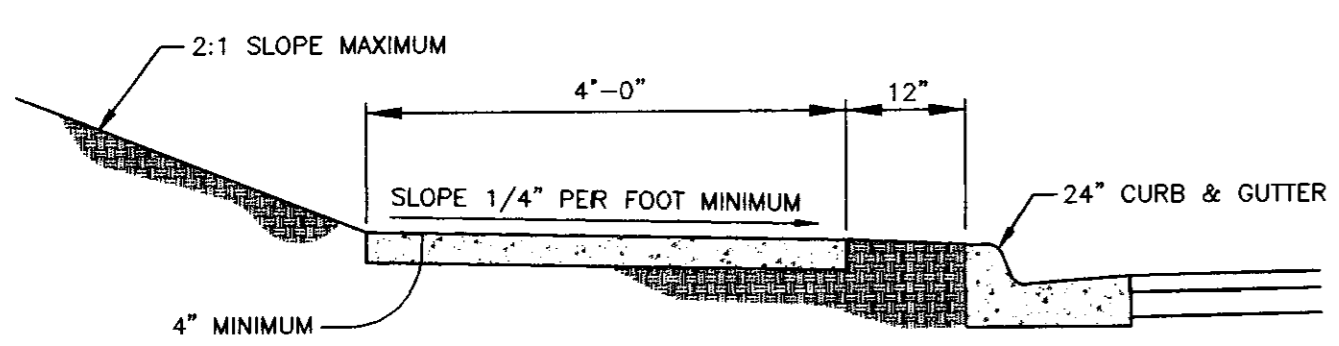
FIRE HYDRANT
6" GATE VALVE & BOX
6"x6"x6" TEE



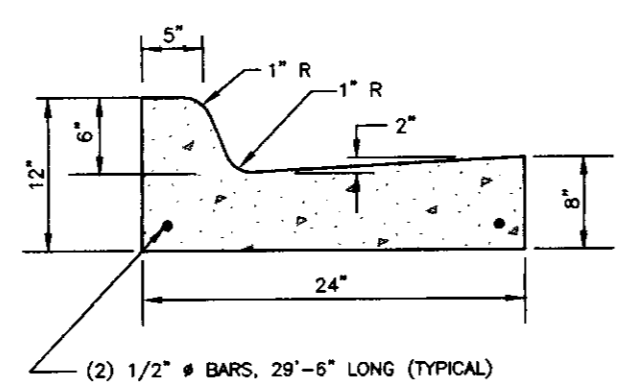
TYPICAL LOT DETAIL

DRAINAGE STRUCTURE SCHEDULE

- 1 CURB INLET NO. 1
TOP 352.00
F.L. 349.00
DA = 1.21 AC
TC = 8.17 MIN.
I = 9.40 IN/HR
Q = 8.5 CFS
- 2 CURB INLET NO. 2
TOP 352.00
F.L. 348.52
DA = 1.81 AC
TC = 8.17 MIN.
I = 9.40 IN/HR
Q = 12.8 CFS

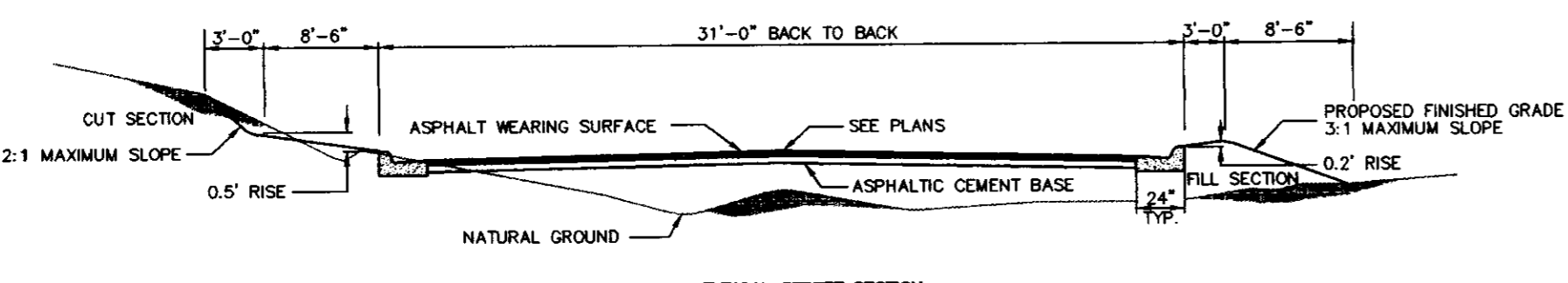


TYPICAL SIDEWALK DETAIL
CONCRETE SIDEWALK SHALL BE INSTALLED
IN CONJUNCTION WITH LOT DEVELOPMENT

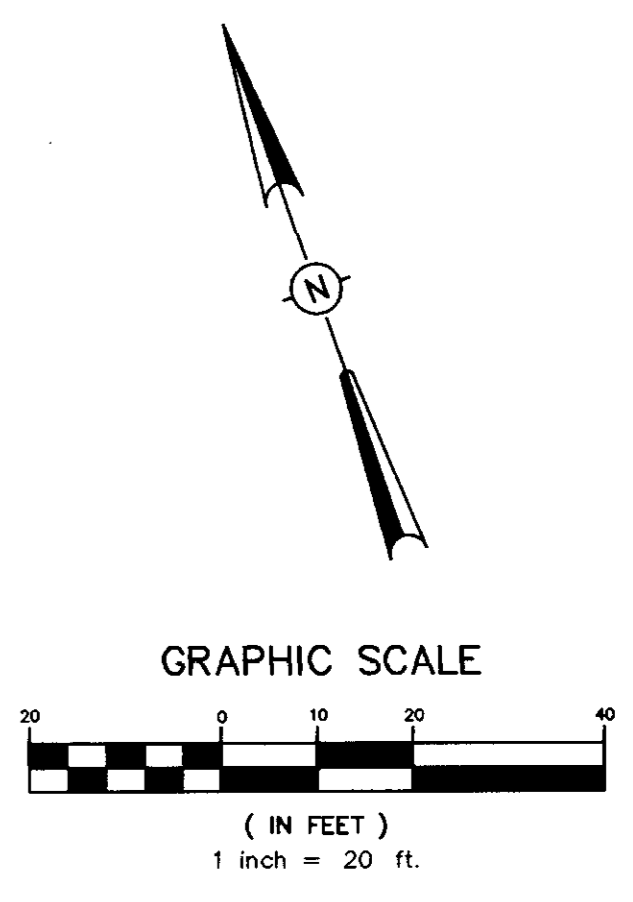


TYPICAL 24" CURB & GUTTER

- NOTES:
- 1/2" EXPANSION JOINT REQ'D. @ 30' c.c. WITH 2-3/4" DOWEL BARS, 15" LONG, REQ'D. AT ALL EXPANSION JOINTS. THEY SHALL BE HELD IN PLACE BY APPROVED CHAIRS OR SUPPORTS, AND 1/2" EXPANSION MATERIALS. 1/4" CONTRACTION JOINT REQ'D. @ 10' c.c.
 - ALL CURB & GUTTER AND DRIVEWAYS TO BE CONSTRUCTED OF 1:2:4 MIX CONCRETE.



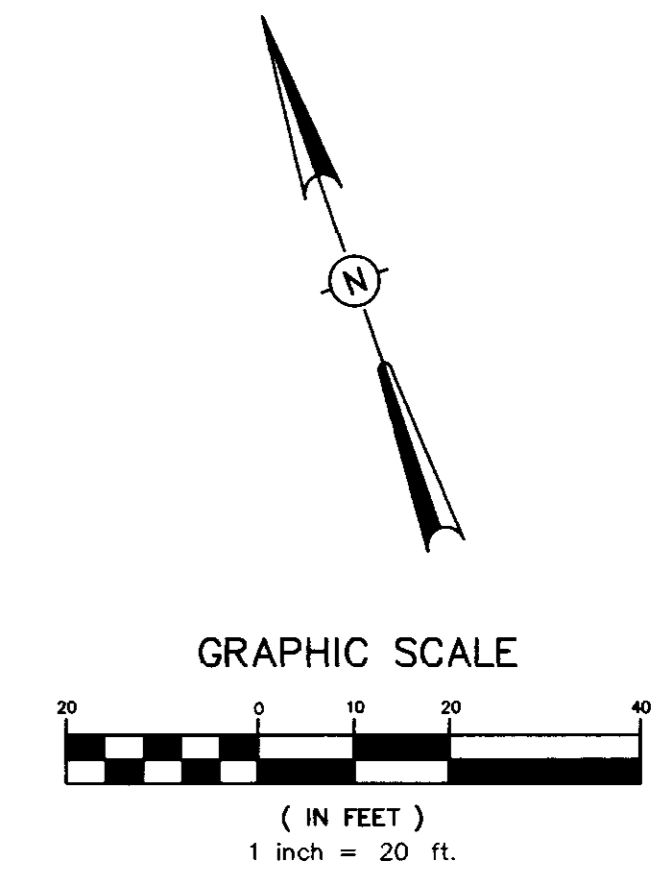
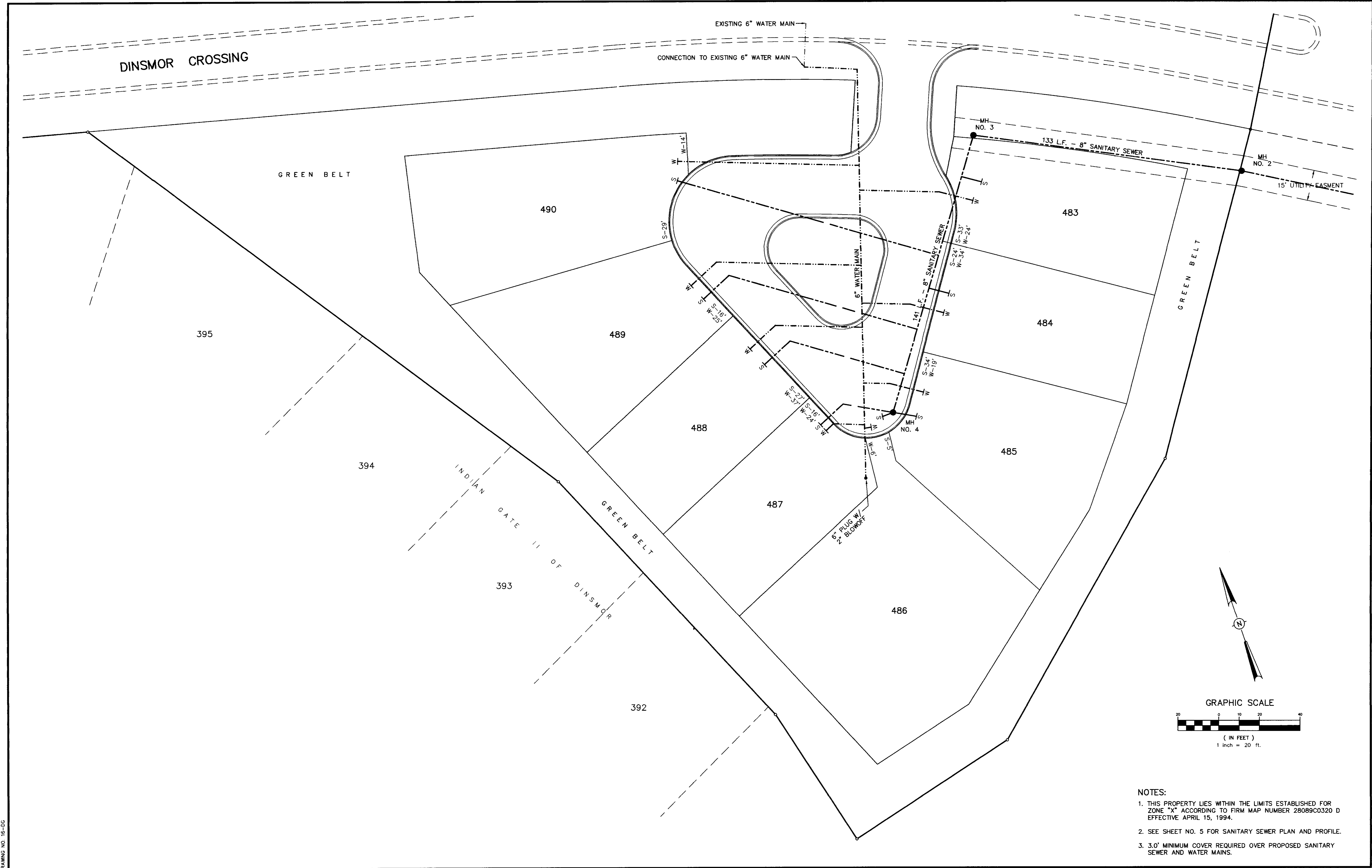
TYPICAL STREET SECTION
ALTERNATE NO. 1: 1 1/2" WEARING SURFACE WITH 8" ASPHALTIC CEMENT BASE
ALTERNATE NO. 2: 1 1/2" WEARING SURFACE WITH 4" ASPHALTIC CEMENT BASE & 6" SOIL TREATMENT (LIME)



- NOTES:
1. THIS PROPERTY LIES WITHIN THE LIMITS ESTABLISHED FOR ZONE "M" ACCORDING TO FIRM MAP NUMBER 28089C0320 D EFFECTIVE APRIL 15, 1994.
 2. SEE SHEET NO. 5 FOR SANITARY SEWER PLAN AND PROFILE.
 3. 3.0' MINIMUM COVER REQUIRED OVER PROPOSED SANITARY SEWER AND WATER MAINS.

DRAWING NO. 16-DG

H D LANG AND ASSOCIATES, INC. POST OFFICE BOX 16085 JACKSON, MISSISSIPPI 39236 601-362-4886	PROJECT TUSCAN VILLAS OF DINSMOR	DESCRIPTION DRAINAGE, GRADING AND UTILITY LAYOUT	DATE 7/29/99	REVISION RECORD DRAWING	BY LL.M.	DRAWN BY: P.H.W.	SHEET
			DATE 8/11/99	REVISION R.O.W. UPDATE	BY LL.M.	DATE: 7/22/96	3
			SCALE: 1"=20'		BOOK: PAGE:		PROJECT NO.: 91-034



- NOTES:
1. THIS PROPERTY LIES WITHIN THE LIMITS ESTABLISHED FOR ZONE "X" ACCORDING TO FIRM MAP NUMBER 28089C0320 D EFFECTIVE APRIL 15, 1994.
 2. SEE SHEET NO. 5 FOR SANITARY SEWER PLAN AND PROFILE.
 3. 3.0' MINIMUM COVER REQUIRED OVER PROPOSED SANITARY SEWER AND WATER MAINS.

DRAWING NO. 16-DC

H D LANG AND ASSOCIATES, INC. POST OFFICE BOX 16085 JACKSON, MISSISSIPPI 39236 601-362-4886	PROJECT TUSCAN VILLAS OF DINSMOR	DESCRIPTION AS-BUILT SEWER AND WATER	DATE	REVISION	BY	DRAWN BY: P.H.W.	SHEET
			7/29/99	RECORD DRAWING	LL.M.	DATE: 7/22/96	3A
8/11/99	R.O.W. UPDATE	LL.M.	SCALE: 1"=20'				
			BOOK: PAGE:				
			PROJECT NO.: 81-034				

SYMBOLS FOR EROSION AND SEDIMENT CONTROL PRACTICES

TEMPORARY PRACTICES

- ▶▶▶▶ CHECK DAM
- ▒ CONSTRUCTION ENTRANCE / EXIT
- ↔ D ↔ DIVERSION
- ▲ DUST CONTROL
- ◐ SEDIMENT BASIN
- SILT FENCE
- ▒ STORM DRAIN INLET PROTECTION (SILT FENCE, STRAW BALE)
- STRAW BALE BARRIER

PERMANENT PRACTICES

- BZ BUFFER ZONE
- DETENTION BASIN
- ↔ D ↔ DIVERSION
- ▒ GRADE STAB. STRUCTURE
- ▒ GW ▒ GRASSED WATERWAY
- ▒ LAND GRADING
- ▒ LEVEL GRADING
- ▒ LW ▒ LINED WATERWAY OR OUTLET
- ▒ PARKING LOT STORAGE
- ▒ PAVED FLUME
- ▒ ROCK OUTLET PROTECTION
- ▒ R STORMWATER RETENTION BASIN

VEGETATIVE PRACTICES

- M MULCHING
- PS PERMANENT SEEDING
- S SODDING
- TS TEMPORARY SEEDING
- PILE TOPSOILING
- TP TREE PRESERVATION AND PROTECTION
- GC TREES, SHRUBS, VINES AND GROUND COVER
- DS VEGETATIVE DUNE STABILIZATION

COMPOSITE PRACTICES

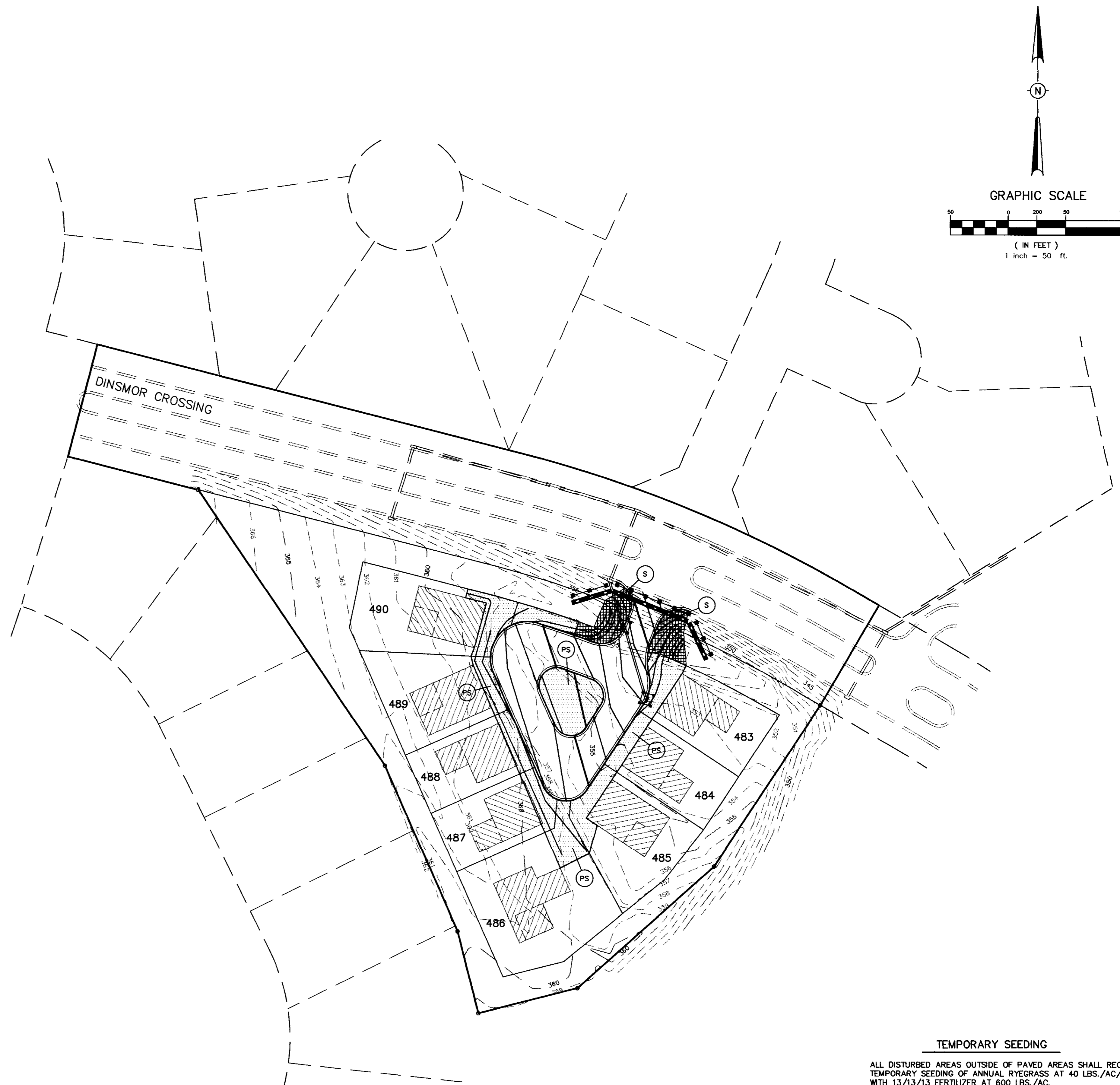
- ▒ VEGETATIVE STREAMBANK STAB.
- ▒ STRUCTURAL STREAMBANK STAB.
- RR RIPRAP

PLANNED EROSION, SEDIMENT AND STORMWATER CONTROL PRACTICES

1. **STORM DRAIN INLET PROTECTION.**
TEMPORARY HAY BALE AND SILT FENCE COMBINATIONS WILL BE INSTALLED AT ALL CURB INLET AND GRATE INLET LOCATIONS.
2. **LAND GRADING**
EXCESS EXCAVATION FROM THE STREET RIGHTS OF WAY WILL BE PLACED ON THE LOTS OF LOWEST ELEVATION. ALL FILL MATERIALS WILL BE COMPACTED AND SLOPES WILL NOT EXCEED 3:1. ALL AREAS WILL RECEIVE SEEDING FOR STABILIZATION OF THE FILL MATERIAL UNTIL PERMANENT VEGETATION IS ESTABLISHED AFTER THE CONSTRUCTION OF THE INDIVIDUAL HOUSES.
3. **ROCK OUTLET PROTECTION**
A RIPRAP APRON WILL BE LOCATED AT THE OUTLET OF ALL CULVERTS TO PREVENT SCOUR.
4. **PERMANENT SEEDING**
ALL DISTURBED AREAS WILL BE PERMANENTLY SEEDED AND MULCHED ONCE FINAL GRADE IS ESTABLISHED. THE LAND GRADING AREAS PREVIOUSLY MENTIONED WILL RECEIVE TEMPORARY SEEDING AS STATED.

MAINTENANCE PLAN

- SHORT TERM**
1. ALL EROSION AND SEDIMENT CONTROL PRACTICES WILL BE CHECKED FOR STABILITY AND OPERATION FOLLOWING EVERY RUNOFF-PRODUCING RAINFALL BUT IN NO CASE LESS THAN EVERY WEEK. ANY NEEDED REPAIRS WILL BE MADE IMMEDIATELY TO MAINTAIN ALL PRACTICES AS DESIGNED.
 2. SEDIMENT WILL BE REMOVED FROM THE INLET PROTECTION DEVICES WHEN IT REACHES A MAXIMUM OF 6 INCHES DEEP. THE DEVICE WILL BE REPLACED AS NECESSARY TO MAINTAIN A BARRIER.
 3. ALL SEEDED AREAS WILL BE FERTILIZED AND RESEDED AS NECESSARY TO MAINTAIN A DENSE VEGETATIVE COVER.
- LONG TERM**
1. ALL VEGETATED AREAS WILL BE MAINTAINED IN ADEQUATE CONDITION TO PROVIDE PROPER GROUND COVER.
 2. AREAS WHERE VEGETATION IS LOST WILL BE FERTILIZED, SEEDED AND MAINTAINED AS NECESSARY TO RESTORE PROPER GROUND COVER.
 3. STRUCTURAL MEASURES WILL BE EXAMINED AT LEAST ANNUALLY AND MAINTENANCE PERFORMED AS NEEDED.

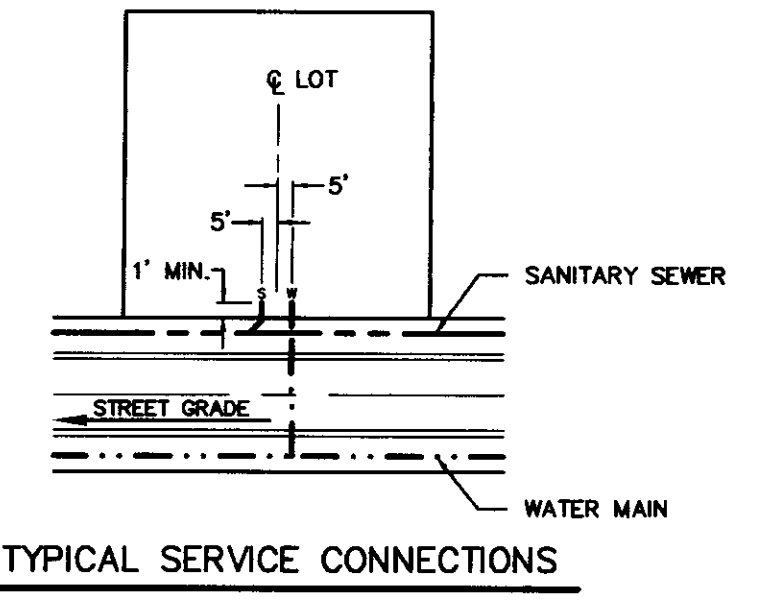
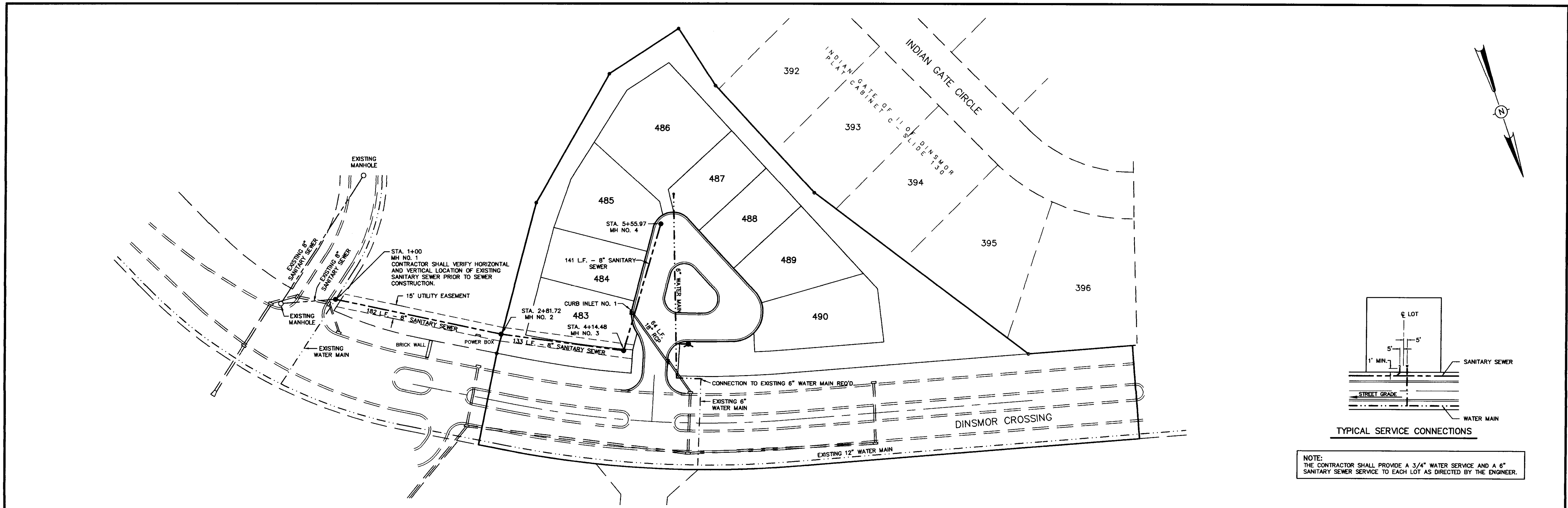


TEMPORARY SEEDING
ALL DISTURBED AREAS OUTSIDE OF PAVED AREAS SHALL RECEIVE TEMPORARY SEEDING OF ANNUAL RYEGRASS AT 40 LBS./AC. WITH 13/13/13 FERTILIZER AT 600 LBS./AC.

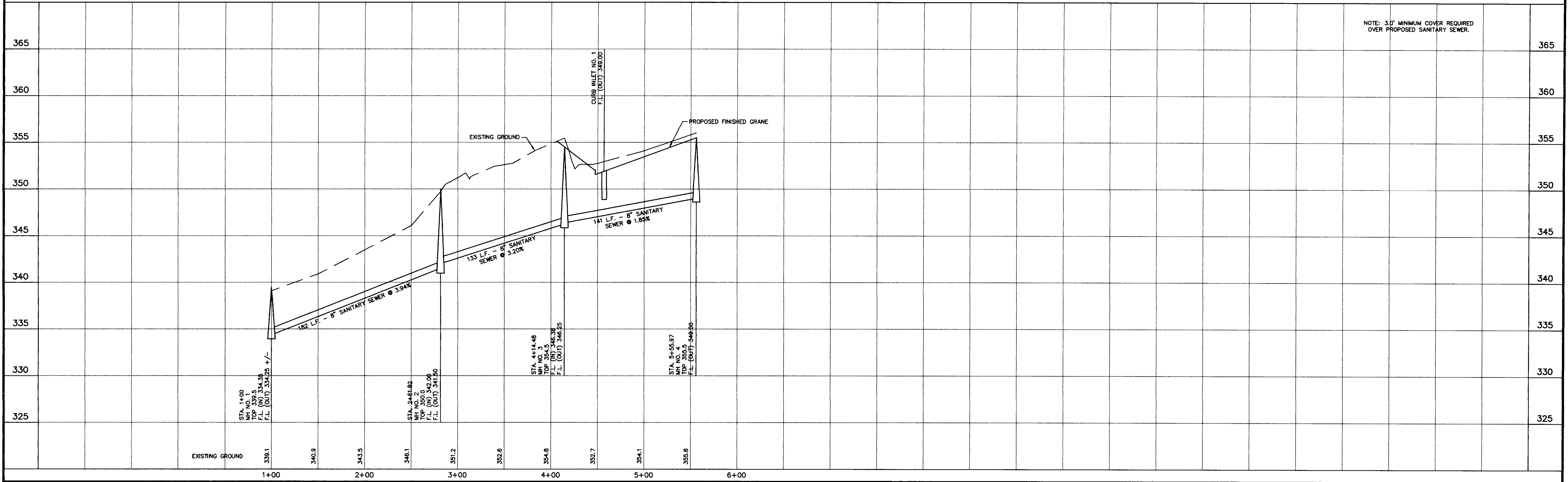
ALL SLOPES SHALL RECEIVE TEMPORARY SEEDING AND FERTILIZER AND STRAW MULCH WITH ASPHALT TACK AT 1.5 TONS MULCH/AC. AND 100 GAL EMULSIFIED ASPHALT, GRADE SS-1 AT 100 GAL./TON MULCH.

PERMANENT SEEDING
PERMANENT SEEDING OF BERMUDA GRASS AT 15 LBS./AC. WITH 13/13/13 FERTILIZER AT 600 LBS./AC.

DRAWING NO.



NOTE:
THE CONTRACTOR SHALL PROVIDE A 3/4" WATER SERVICE AND A 6" SANITARY SEWER SERVICE TO EACH LOT AS DIRECTED BY THE ENGINEER.



NOTE: 3.0' MINIMUM COVER REQUIRED OVER PROPOSED SANITARY SEWER.

DRAWING NO. 16-PPI

H D LANG AND ASSOCIATES, INC.
POST OFFICE BOX 16085 JACKSON, MISSISSIPPI 39236
601-362-4886

PROJECT
TUSCAN VILLAS OF DINSMOR

DESCRIPTION
PLAN AND PROFILE - SANITARY SEWER OUTFALL

DATE	REVISION	BY
7/29/98	RECORD DRAWING	LL.M.
8/11/99	R.O.W. UPDATE	LL.M.

DRAWN BY: P.H.W.
DATE: 7/22/98
HORIZ.: 1"=50' / VERT.: 1"=5'
BOOK: PAGE:
PROJECT NO.: 91-034

SHEET
5