

CITY OF RIDGELAND, MISSISSIPPI

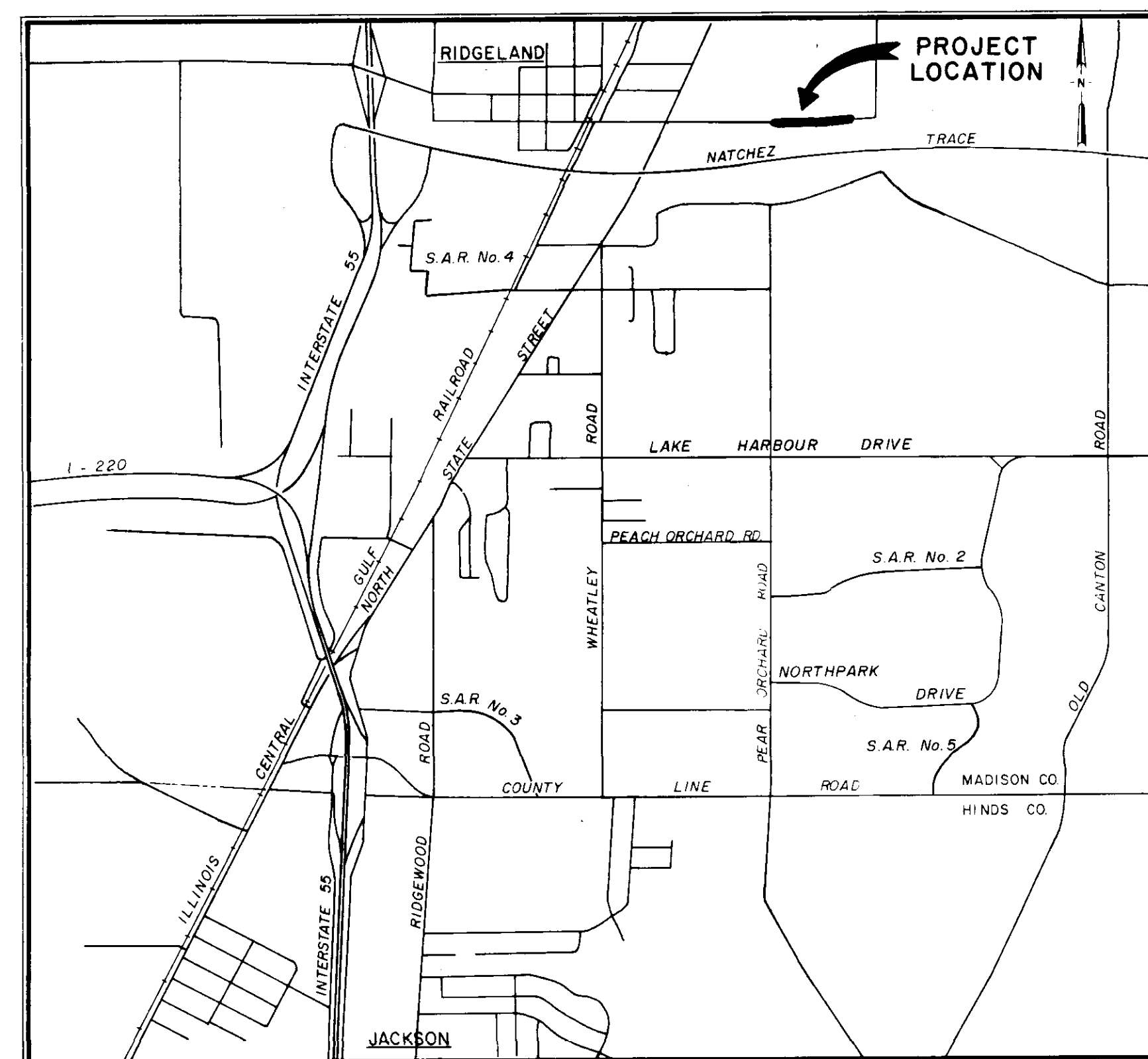
EAST JACKSON STREET RECONSTRUCTION

PHASE 2

Mayor
Hite Wolcott

Mayor Pro Tem
Hilda Boyd

City Attorney
Milton Case



Aldermen
Al Bible
Hilda Boyd
Harvey Carr, Jr.
Gene McGee
Gilbert Sollek

Public Works Director
Horace Ross

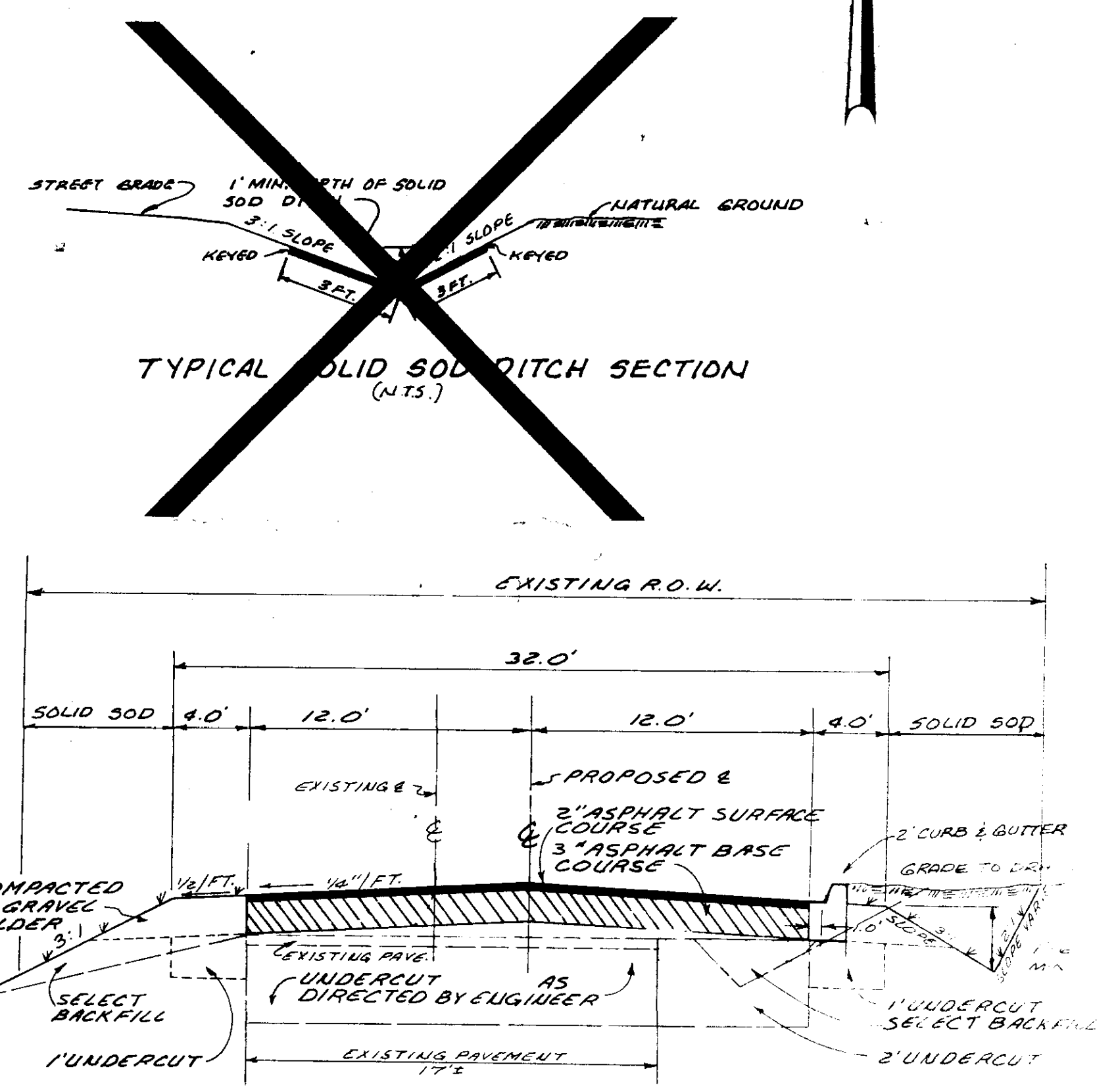
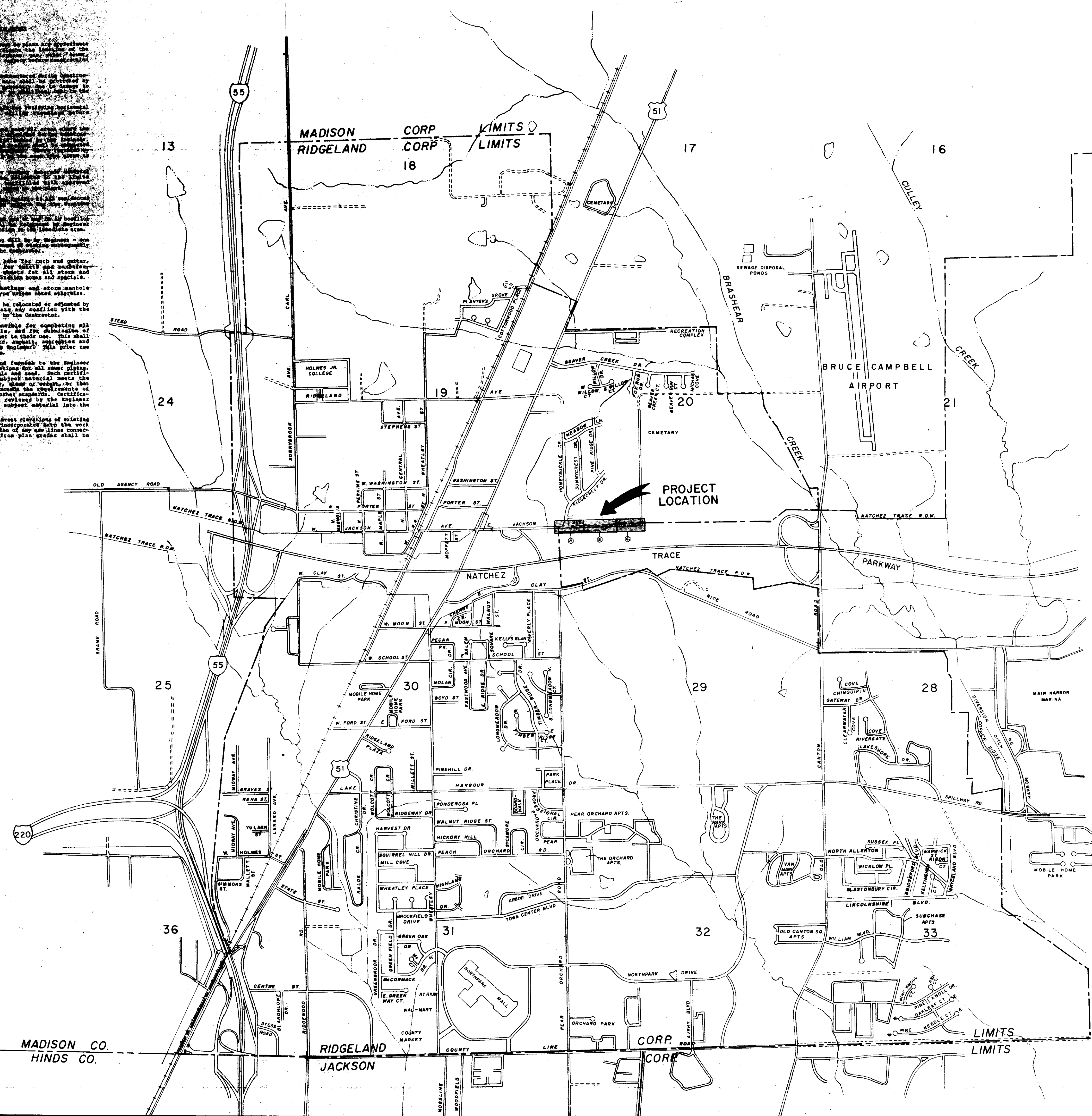
AUGUST 1988

WAGGONER ENGINEERING INC.
Consulting Engineers
Jackson / Brandon, Ms.

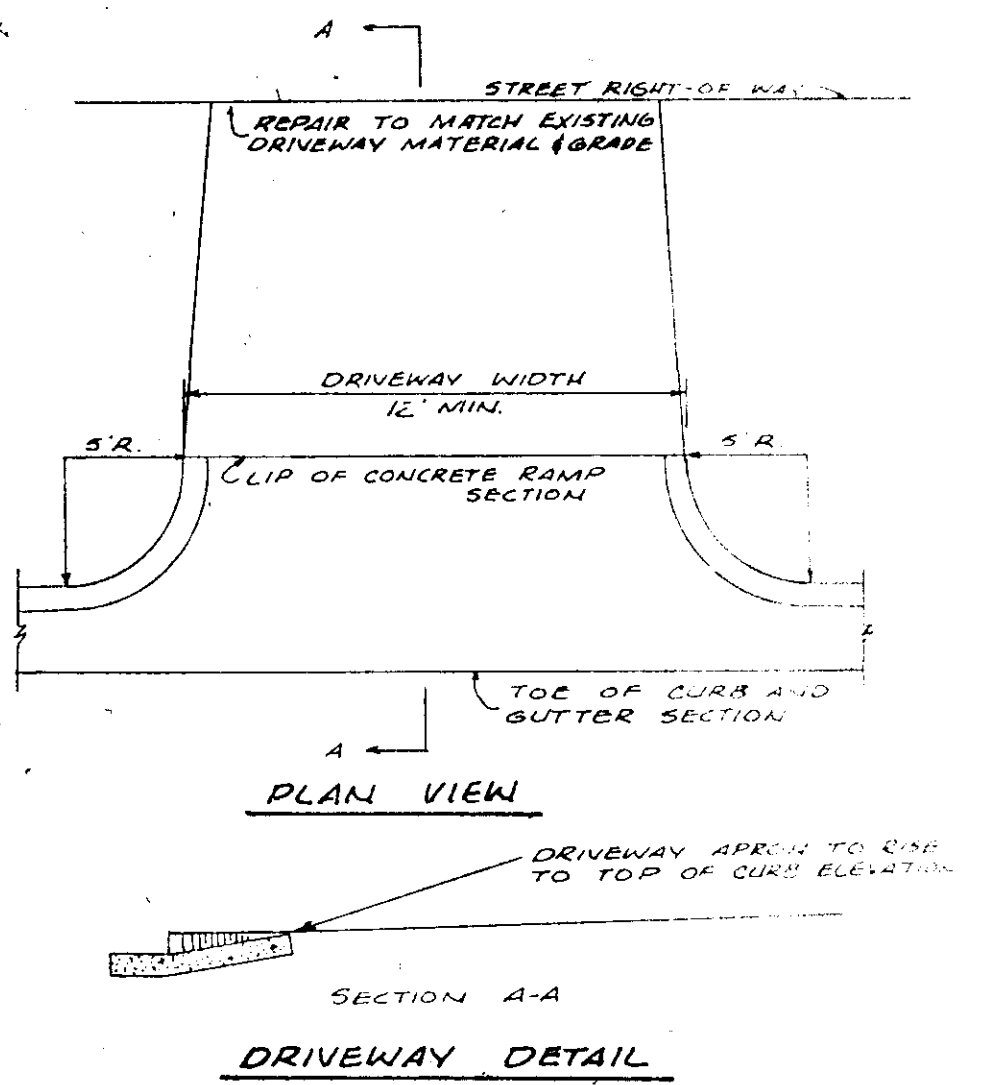
RECORD OF
MAINTENANCE

PWP-01000

1. The existing utility locations shown in plans and elevations shall be checked by the Contractor and the location of the existing utilities shall be marked on the ground by the Contractor to the satisfaction of the Engineer before any construction is started.
2. The utility lines or service lines shown on the plans shall be protected by the Contractor and the Contractor shall be responsible for the safety of the utility lines and service lines during the construction.
3. The Contractor shall be responsible for the safety of the utility lines and service lines during the construction.
4. The Contractor shall be responsible for the safety of the utility lines and service lines during the construction.
5. The Contractor shall be responsible for the safety of the utility lines and service lines during the construction.
6. The Contractor shall be responsible for the safety of the utility lines and service lines during the construction.
7. The Contractor shall be responsible for the safety of the utility lines and service lines during the construction.
8. The Contractor shall be responsible for the safety of the utility lines and service lines during the construction.
9. The Contractor shall be responsible for the safety of the utility lines and service lines during the construction.
10. The Contractor shall be responsible for the safety of the utility lines and service lines during the construction.
11. The Contractor shall be responsible for the safety of the utility lines and service lines during the construction.
12. The Contractor shall be responsible for the safety of the utility lines and service lines during the construction.
13. The Contractor shall be responsible for the safety of the utility lines and service lines during the construction.
14. The Contractor shall be responsible for the safety of the utility lines and service lines during the construction.
15. The Contractor shall be responsible for the safety of the utility lines and service lines during the construction.



TYPICAL ROADWAY SECTION
N.T.S.



RECORD DRAWINGS
MARCH 1990

PHASE 2
CITY OF RIDGELAND
JACKSON STREET
RECONSTRUCTION
PROJECT LAYOUT

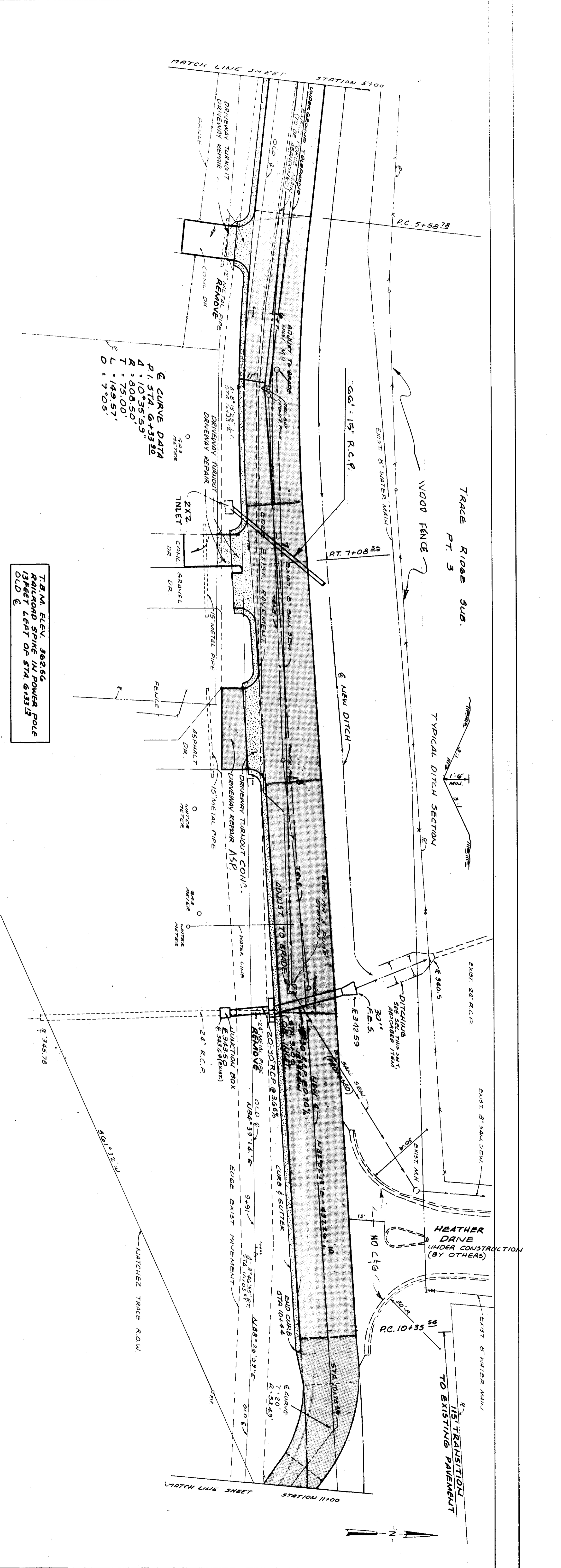
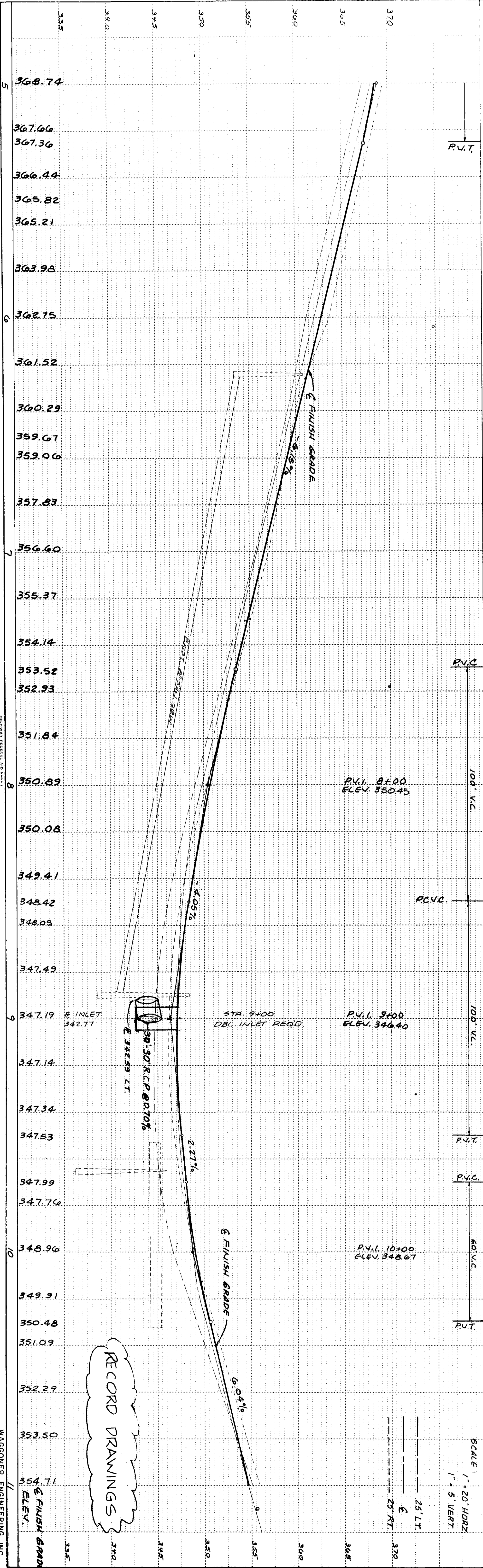
WAGGONER ENGINEERS
Consulting Engineers - Jackson, Mississippi

DRAWN BY: H.D.C. DATE: 1/88
CHECKED BY: DATE: 1/88
APPROVED BY: J.A.W. DATE: 1/88

1 of 4

PROFILE	NO.	DATE
SURVEYED		
PLOTTED		
GRADES CHECKED		
B. M.'S NOTED		
STRUCTURE NOTATION CHECKED		

PLAN	NO.	DATE
SURVEYED		
PLOTTED		
GRADES CHECKED		
B. M.'S NOTED		
STRUCTURE NOTATION CHECKED		



T.B.M. ELEV. 362.66
RAILROAD SPINE IN POWER POLE
SHEET LEFT OF STA. 8950.2

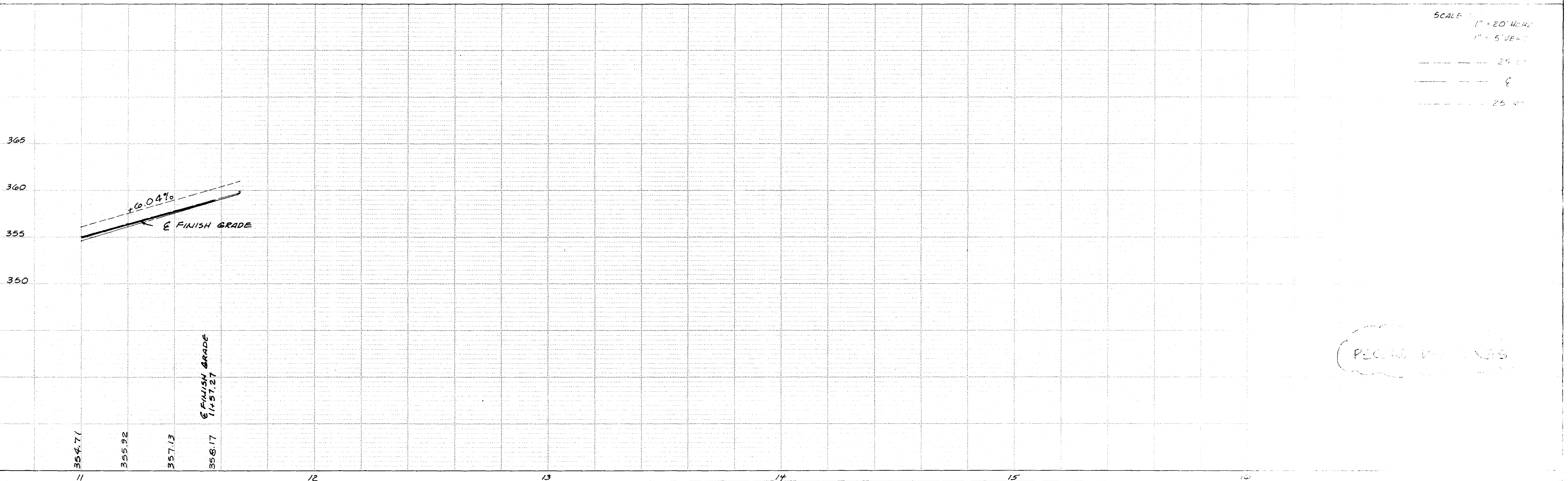
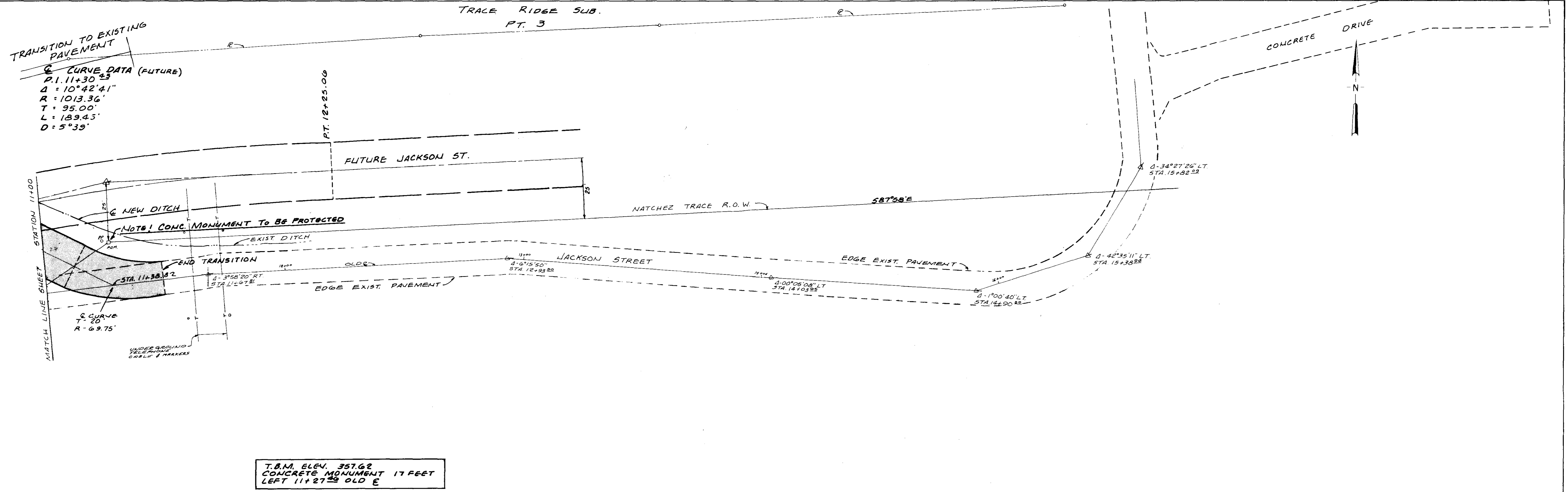
RECORD DRAWINGS

PLATE 1-SINGLE PLAN AND PROFILE-FULL LOT

WAGGONER ENGINEERING INC.
Consulting Engineers - Jackson / Brandon, MS

PLAN	SURVEYED	DATE
	ALLOCATION CHECKED	
	NOTE BOOK NO.	

PROFILE	SURVEYED	DATE
	GRADES CHECKED	
	NOTE BOOK NO.	
	STRUCTURE NOTATIONS CHECKED	



RECORD DRAWING