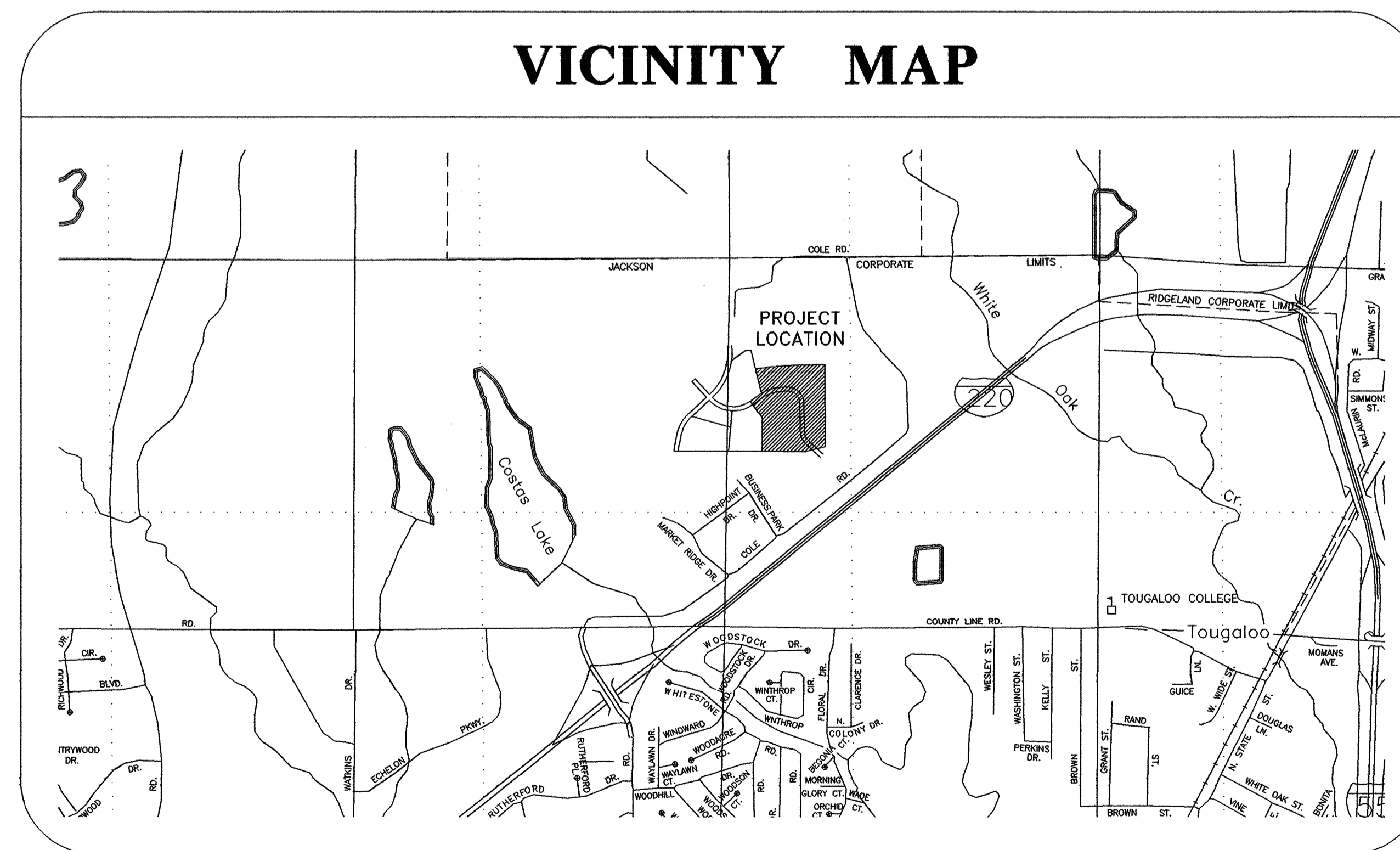


ASBUILT CONSTRUCTION PLANS
FOR
EAST MARKETRIDGE DRIVE EXTENSION
RIDGELAND, MISSISSIPPI

Received 4-2-08

Due to pending sale of Madison Co.
w/s to Ridgeland, this ~~is~~ section has
never been accepted

FOR
COPELAND & JOHNS, INC.
P.O. BOX 10488
JACKSON, MISSISSIPPI 39289



BANKS ENGINEERING & SURVEYING, INC.
115 LONE WOLF DRIVE SUITE B * MADISON, MS 39110
OFFICE (601) 407-1240 * FAX (601) 407-1245

in Madison County

QM-1616 (5)

INDEX OF SHEETS

1. COVER SHEET
2. DRAWING INDEX
3. PROJECT OVERLAY
4. NOT USED
5. PLAN AND PROFILE - EAST MARKETRIDGE DRIVE (0+00 - 11+00)
6. PLAN AND PROFILE - EAST MARKETRIDGE DRIVE (11+00 - 17+47.52)
7. PLAN AND PROFILE - SANITARY SEWER LINE "A" / DRAINAGE LINE "A"
8. PLAN AND PROFILE - DRAINAGE LINE "B"
9. STANDARD WATER AND SEWER DETAILS
10. DRAINAGE AND GRADING DETAILS

DATE	REVISION

DRAWING NAME: D:\PROJECTS\421-06
DRAWN BY: NPW SCALE: NTS
DATE OF DRAWING: 3-06 PROJECT NO.: 421-06-001
CHECKED BY: APPROVED BY:

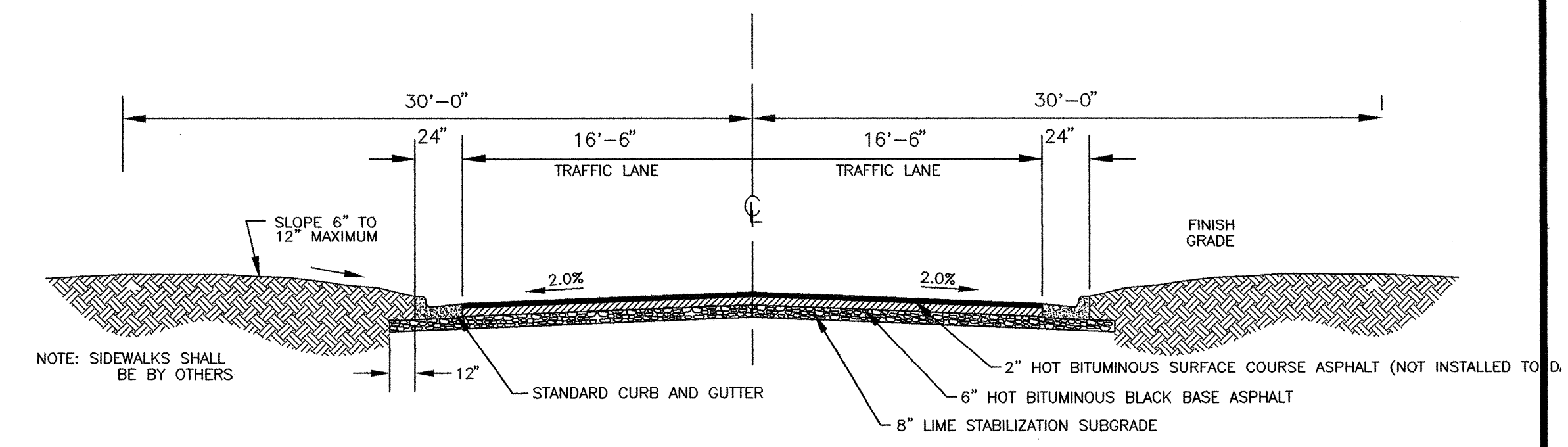
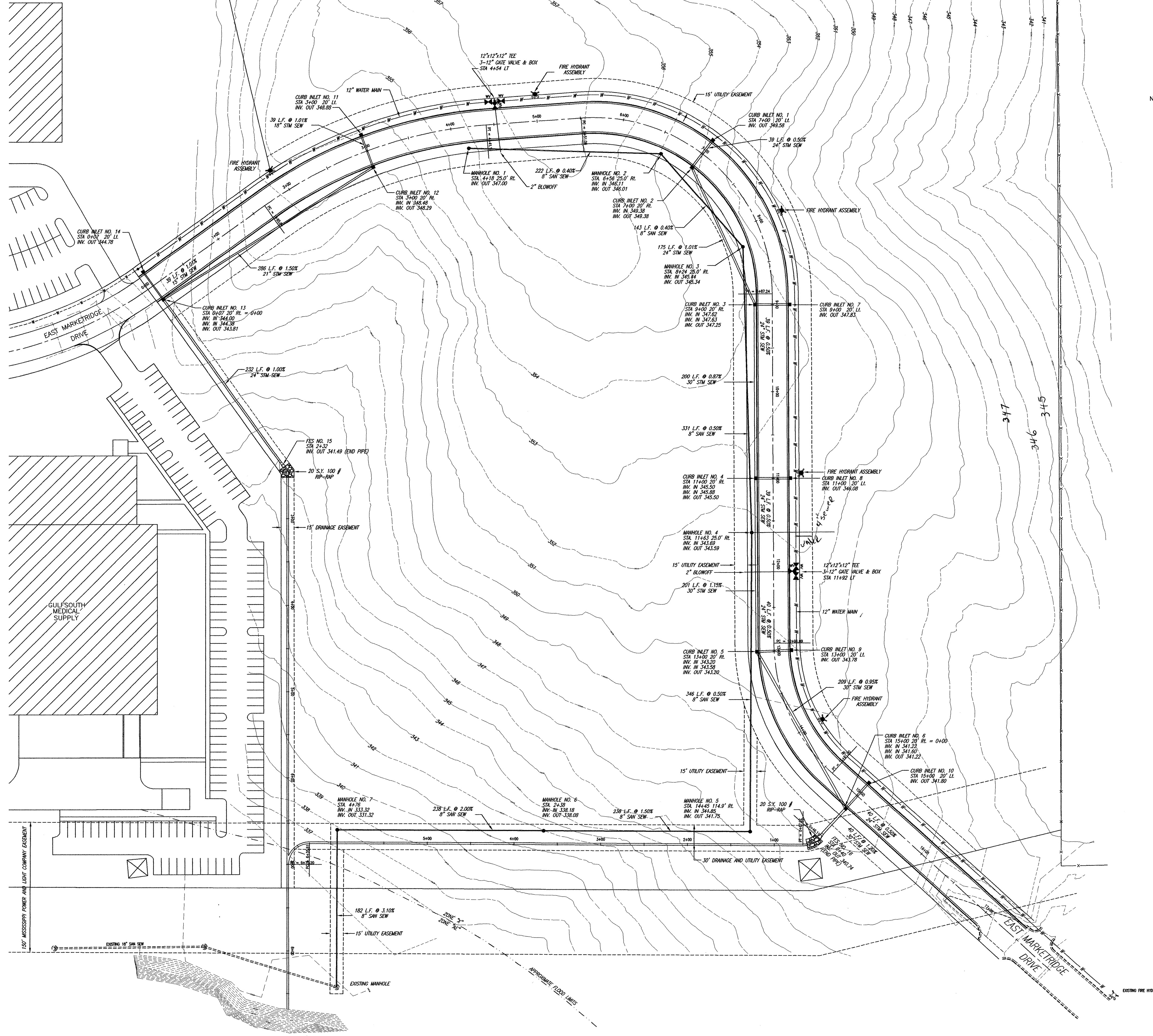
B **BANKS ENGINEERING & SURVEYING, INC.**
115 LONE WOLF DRIVE SUITE B * MADISON, MS 39110
OFFICE (601) 407-1240 * FAX (601) 407-1245

CLIENT:
COPELAND AND JOHNS
P.O. BOX 10488
JACKSON, MISSISSIPPI 39289

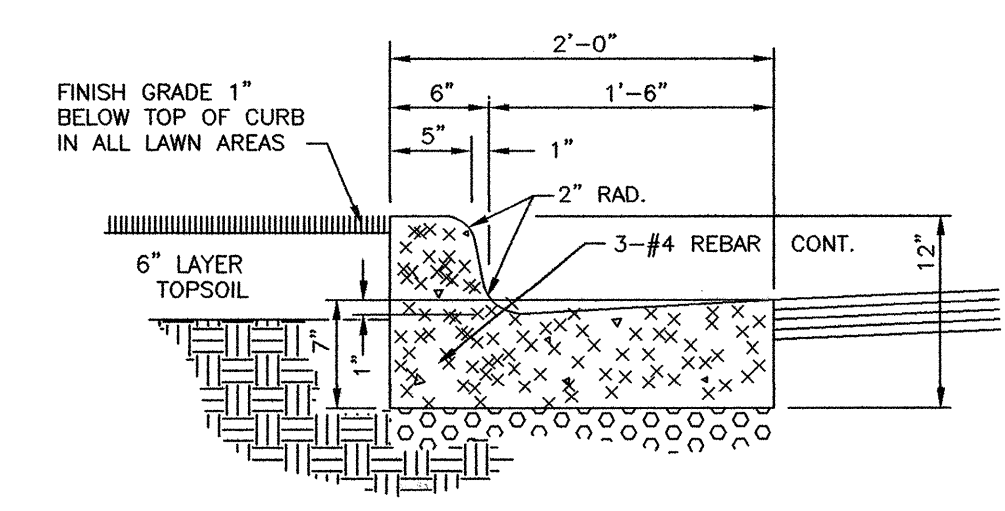
PROJECT: DRAWING INDEX
EAST MARKETRIDGE DRIVE EXTENSION (ASBUILT)

SHEET NO.
2

ACRES ±



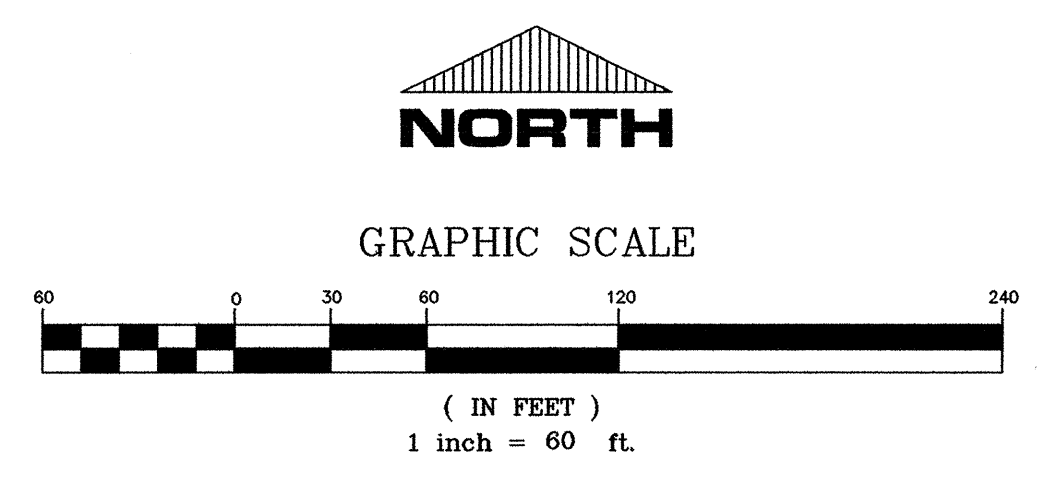
TYPICAL STREET SECTION
N.T.S.



CURB & GUTTER DETAIL

NOTES:

1. THIS PROPERTY IS SITUATED IN FLOOD ZONES "X" AND "AE" ACCORDING TO FLOOD INSURANCE RATE MAP NUMBER 28089C0320 D, DATED APRIL 15, 1994.
2. ALL WATERLINE SHOWN IS C-900 CLASS 150 PVC.
3. ALL SEWERLINE IS SDR-26 PVC.



DATE	REVISION

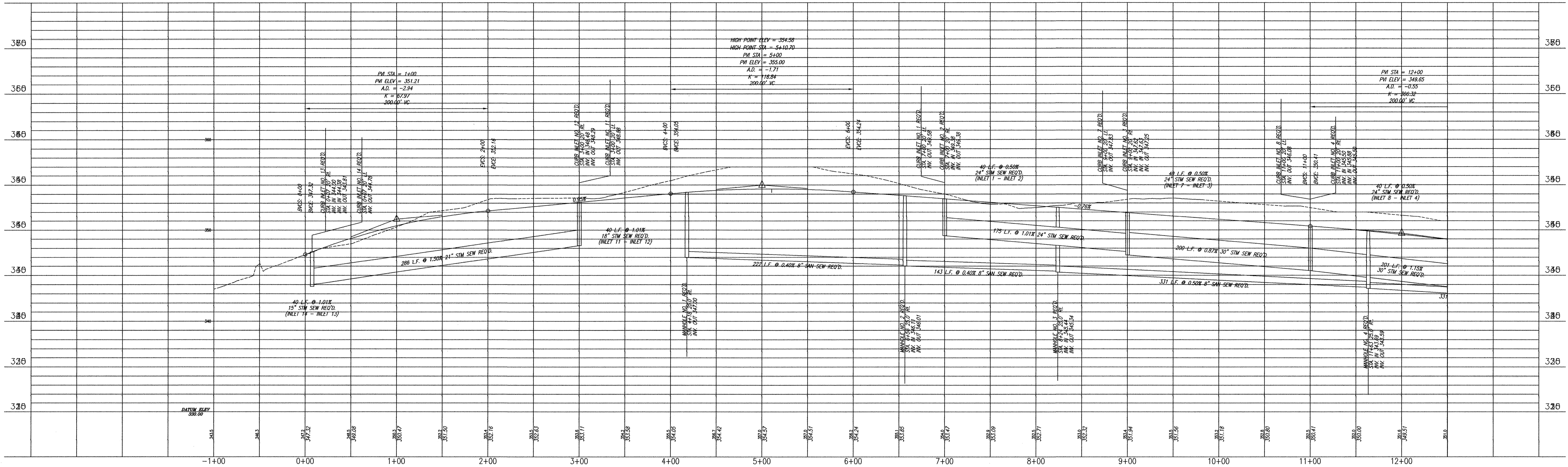
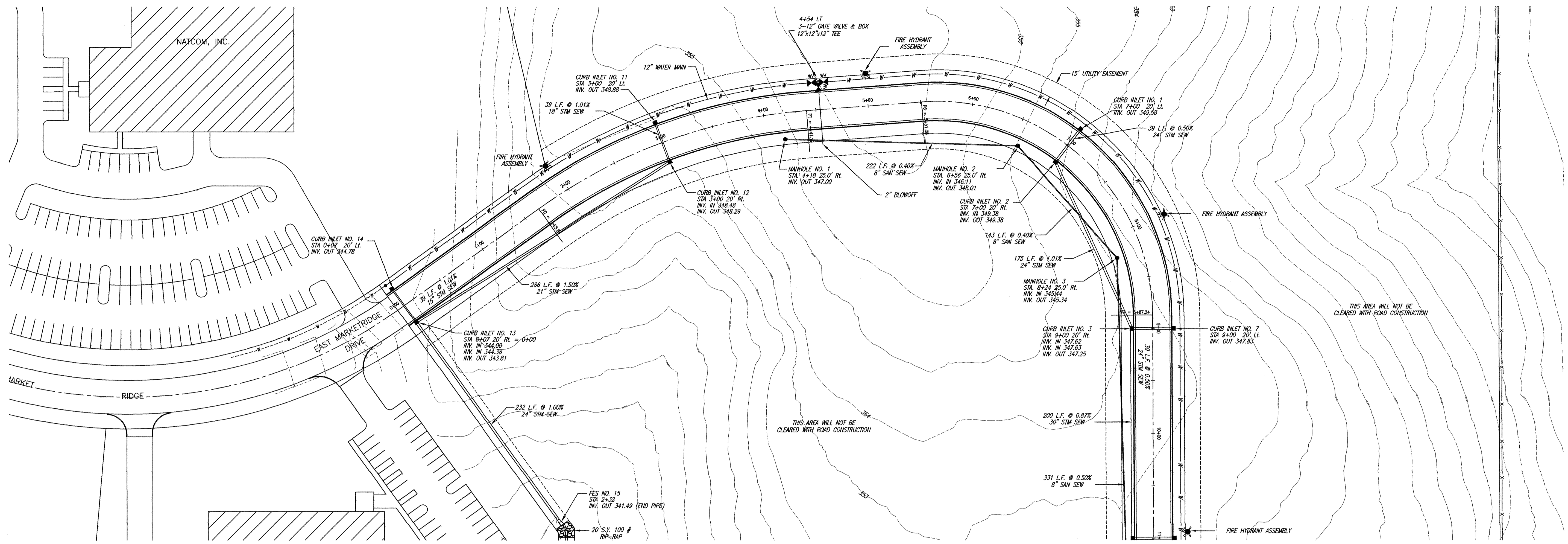
DRAWING NAME: D:\PROJECTS\421-06
 DRAWN BY: NFW SCALE: AS SHOWN
 DATE OF DRAWING: 3-06 PROJECT NO.: 421-06-001
 CHECKED BY: APPROVED BY:

B BANKS ENGINEERING & SURVEYING, INC.
 115 LONE WOLF DRIVE SUITE B * MADISON, MS 39110
 OFFICE (601) 407-1240 * FAX (601) 407-1245

CLIENT:
COPELAND AND JOHNS
 P.O. BOX 10488
 JACKSON, MISSISSIPPI 39289

PROJECT:
 PROJECT OVERALL
 EAST MARKETRIDGE DRIVE EXTENSION (ASBULT)

SHEET NO.
3



DATE	REVISION

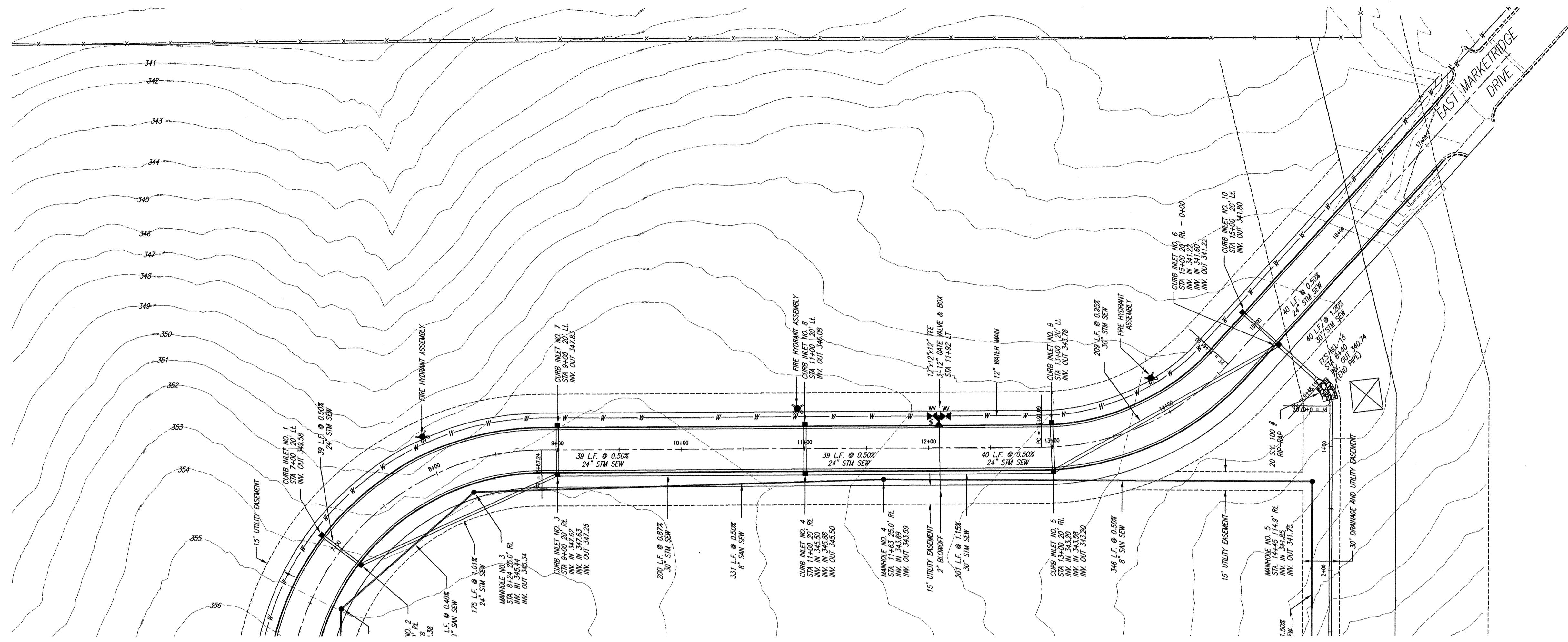
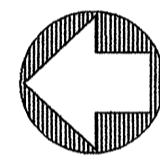
DRAWING NAME: D:\PROJECTS\421-06
 DRAWN BY: NPW SCALE: AS SHOWN
 DATE OF DRAWING: 3-06 PROJECT NO.: 421-06-001
 CHECKED BY: APPROVED BY:

B BANKS ENGINEERING & SURVEYING, INC.
 115 LONE WOLF DRIVE SUITE B * MADISON, MS 39110
 OFFICE (601) 407-1240 * FAX (601) 407-1245

CLIENT:
COPELAND AND JOHNS
 P.O. BOX 10488
 JACKSON, MISSISSIPPI 39289

PROJECT:
PLAN AND PROFILE - 0+00 TO 11+00
EAST MARKETRIDGE DRIVE EXTENSION (ASBUILT)

SHEET NO.
5

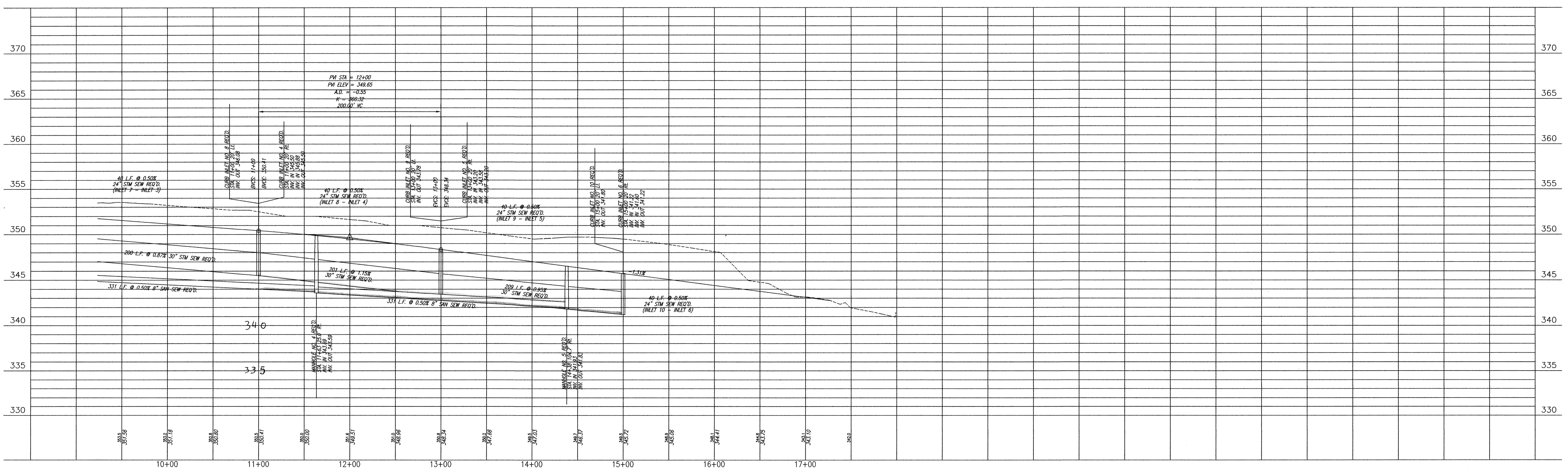


Friday 4-4-08

6" Sewer tap 895.00

6" Fire line tap \$3834.66

1" meter (commercial) \$



DATE	REVISION

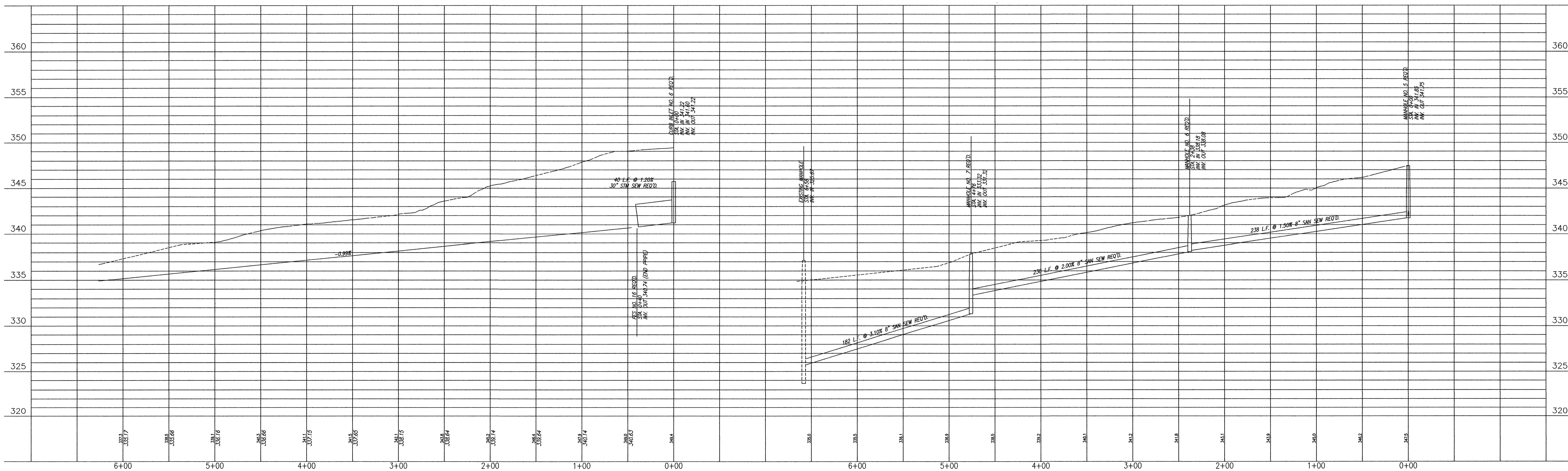
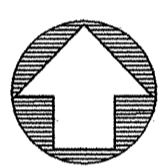
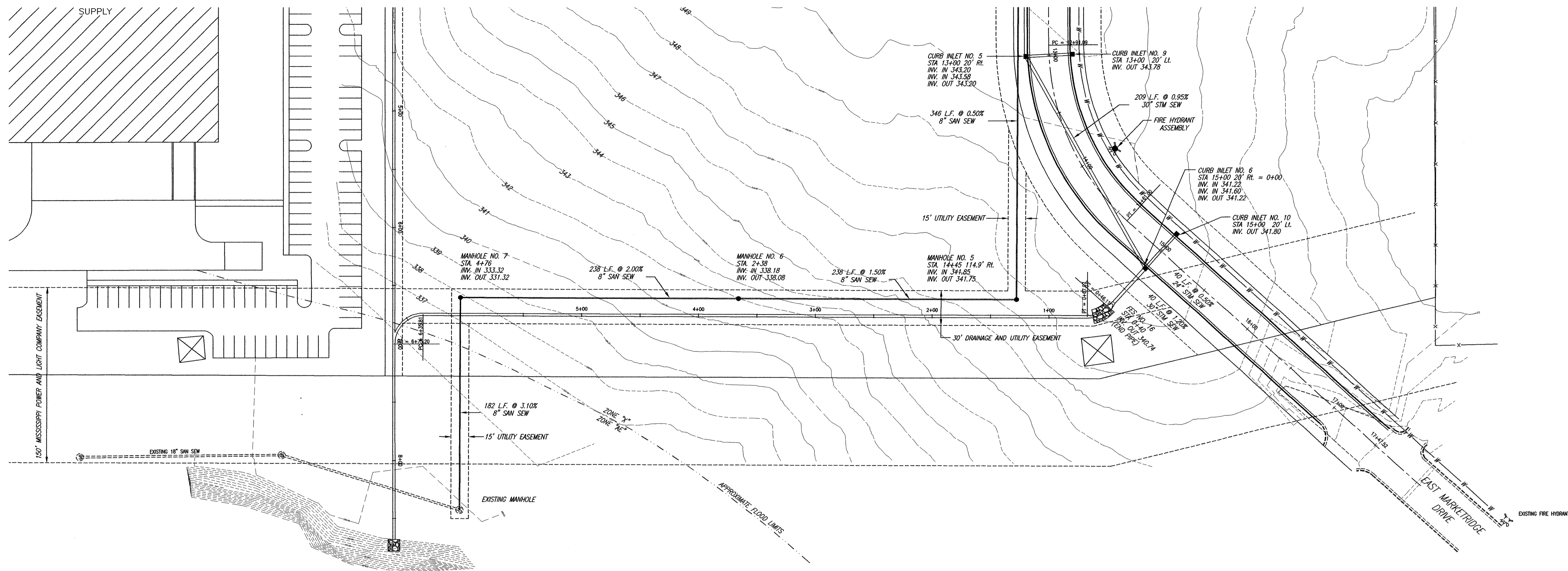
DRAWING NAME: D:\PROJECTS\421-06
 DRAWN BY: NIPW SCALE: AS SHOWN
 DATE OF DRAWING: 3-06 PROJECT NO.: 421-06-001
 CHECKED BY: APPROVED BY:

B BANKS ENGINEERING & SURVEYING, INC.
 115 LONE WOLF DRIVE SUITE B * MADISON, MS 39110
 OFFICE (601) 407-1240 * FAX (601) 407-1245

CLIENT:
COPELAND AND JOHNS
 P.O. BOX 10488
 JACKSON, MISSISSIPPI 39289

PROJECT:
 PLAN/PROFILE - 11+00 TO 17+47.52
 EAST MARKETRIDGE DRIVE EXTENSION (ASBUILT)

SHEET NO.
6



DATE	REVISION

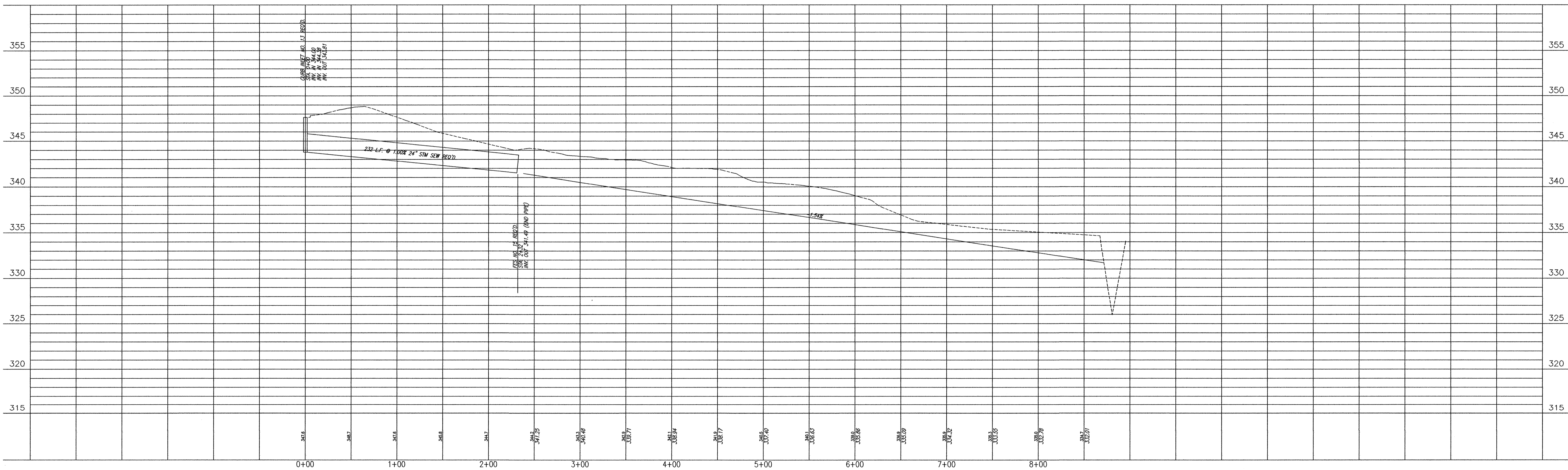
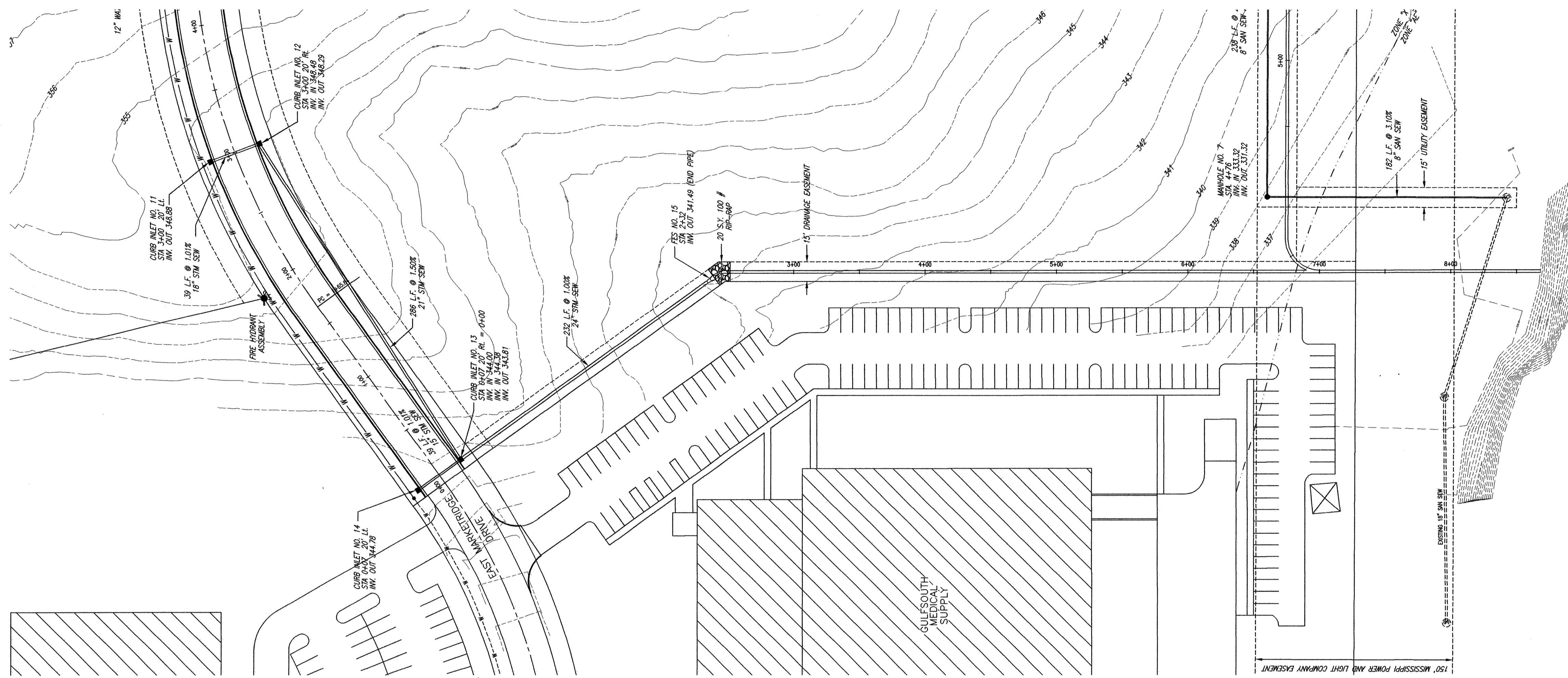
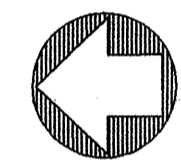
DRAWING NAME: D:\PROJECTS\421-06
 DRAWN BY: NPW SCALE: AS SHOWN
 DATE OF DRAWING: 3-06 PROJECT NO.: 421-06-001
 CHECKED BY: APPROVED BY:

B BANKS ENGINEERING & SURVEYING, INC.
 115 LONE WOLF DRIVE SUITE B * MADISON, MS 39110
 OFFICE (601) 407-1240 * FAX (601) 407-1245

CLIENT:
COPELAND AND JOHNS
 P.O. BOX 10488
 JACKSON, MISSISSIPPI 39289

PROJECT:
 PLAN AND PROFILE
 SANITARY SEWER LINE "A" AND DRAINAGE LINE "A"
 EAST MARKET RIDGE DRIVE EXTENSION (ASBUILT)

SHEET NO.
7



DATE	REVISION

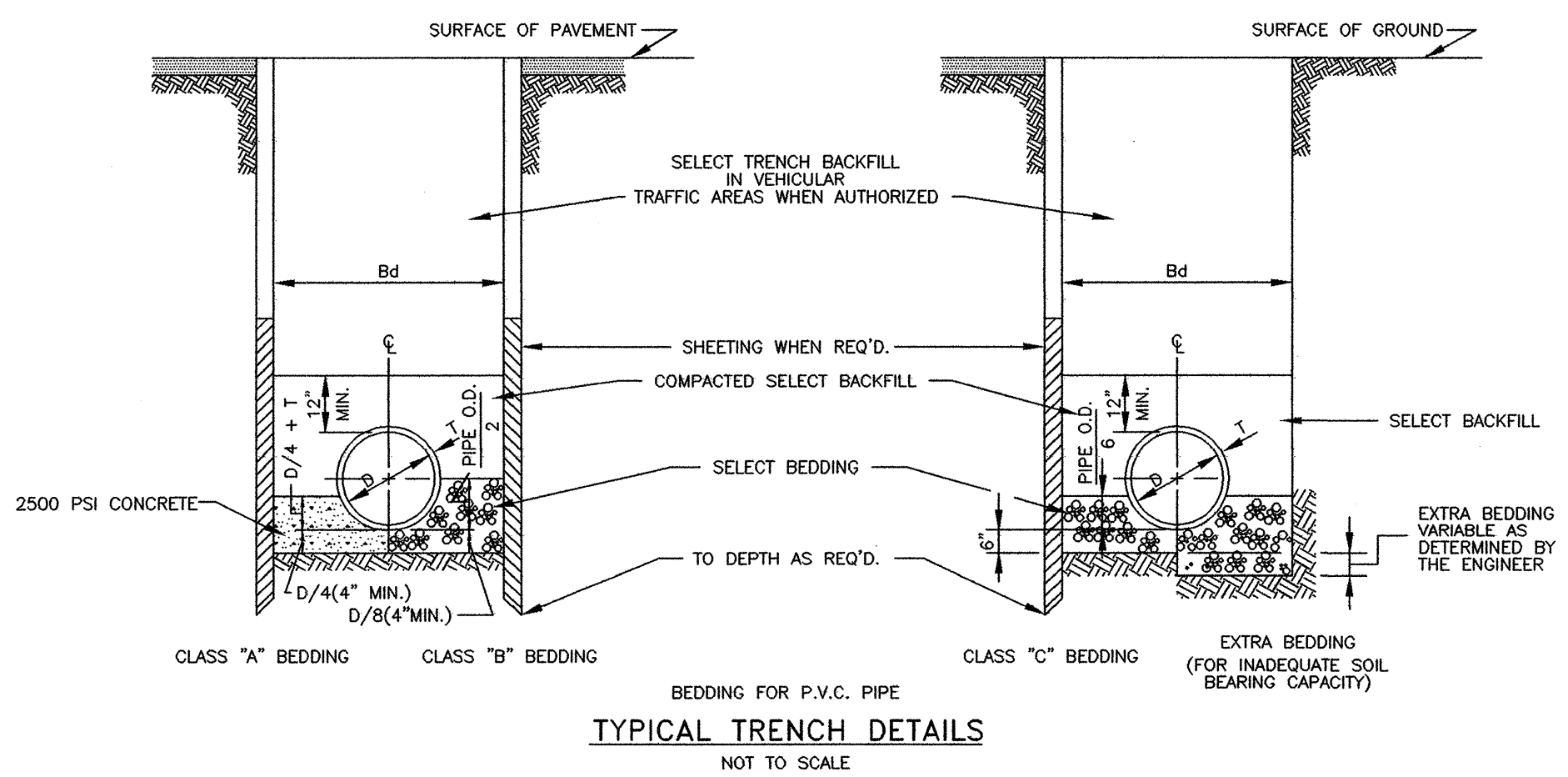
DRAWING NAME: D:\PROJECTS\421-06
 DRAWN BY: NPW SCALE: AS SHOWN
 DATE OF DRAWING: 3-06 PROJECT NO.: 241-06-001
 CHECKED BY: _____ APPROVED BY: _____

B BANKS ENGINEERING & SURVEYING, INC.
 115 LONE WOLF DRIVE SUITE B * MADISON, MS 39110
 OFFICE (601) 407-1240 * FAX (601) 407-1245

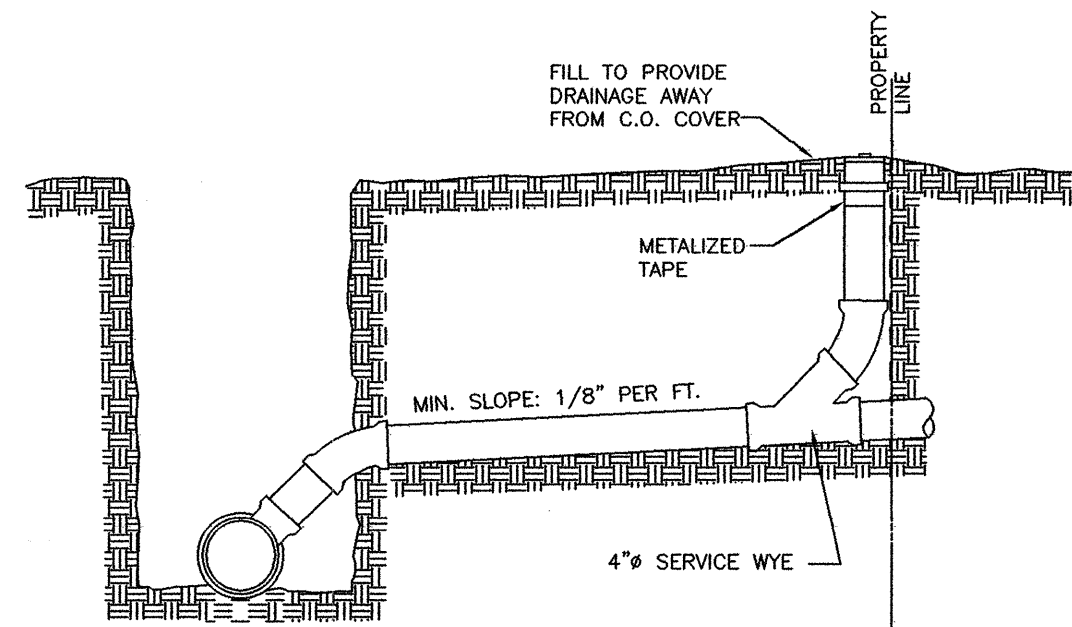
CLIENT:
COPELAND AND JOHNS
 P.O. BOX 10488
 JACKSON, MISSISSIPPI 39289

PROJECT:
 PLAN/PROFILE - DRAINAGE LINE "B"
 EAST MARKETRIDGE DRIVE EXTENSION (ASBUILT)

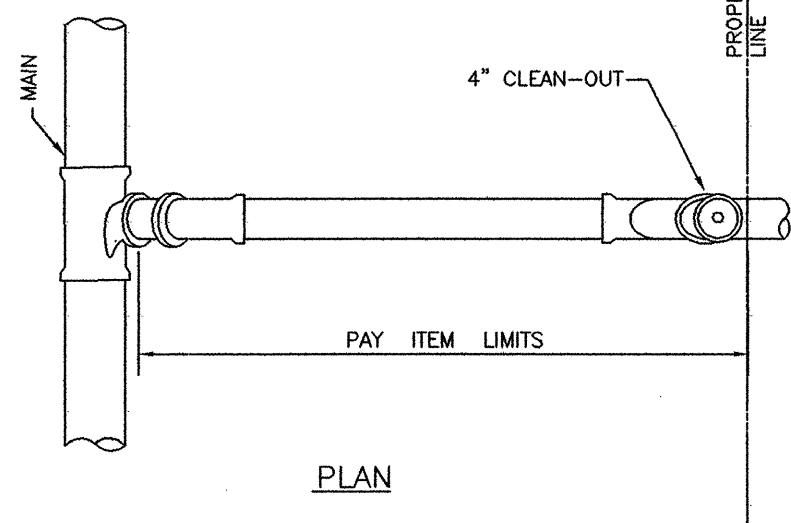
SHEET NO.
8



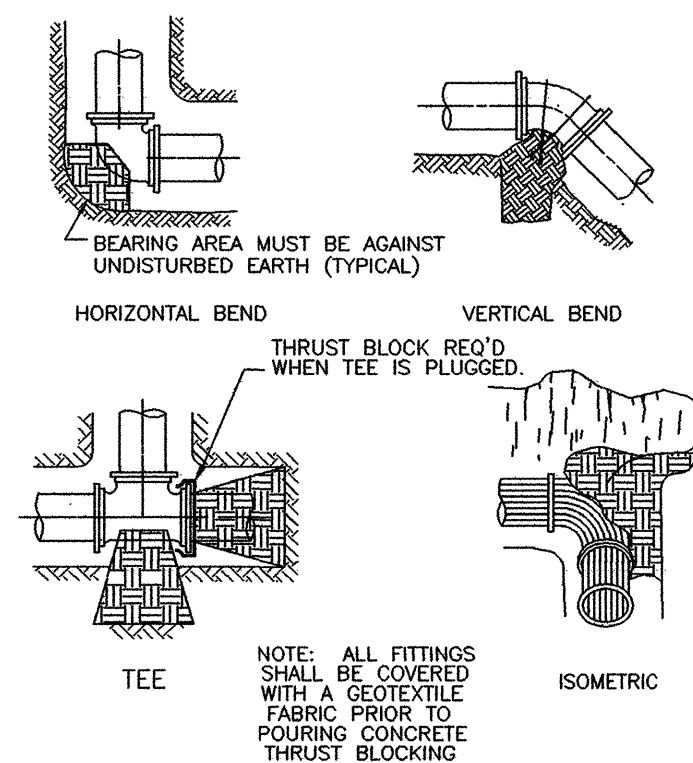
TYPICAL TRENCH DETAILS
NOT TO SCALE



SECTION



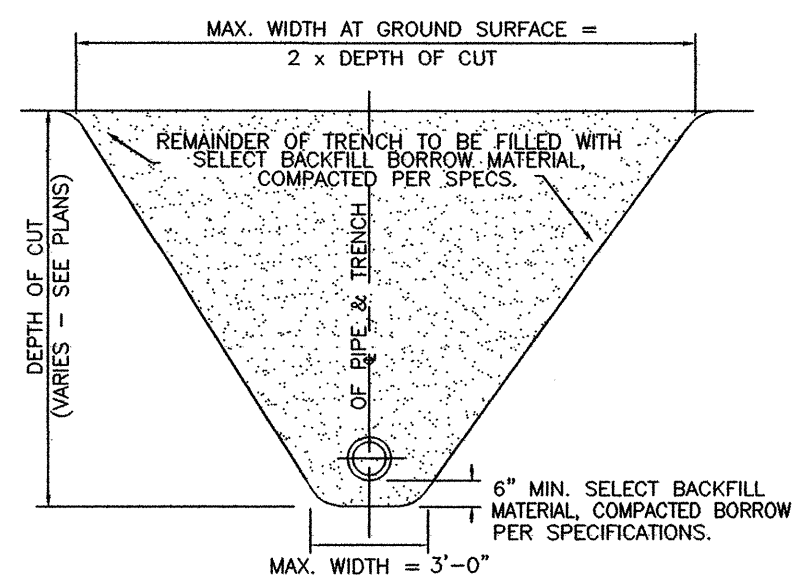
PLAN
SEWER SERVICE



BEARING AREAS FOR THRUST BLOCKING
IN SQUARE FEET

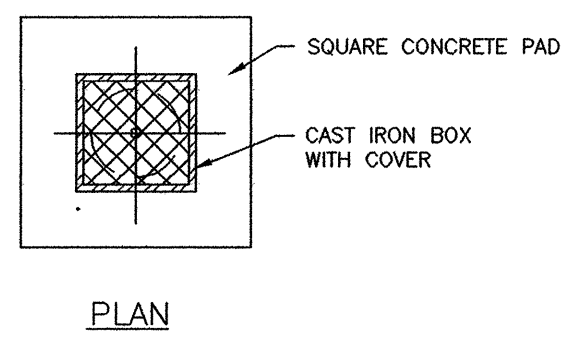
FITTING:	4" DIA.	6" DIA.	8" DIA.	10" DIA.	12" DIA.	14" DIA.
TEES	0.9	1.9	4.7	4.7	6.7	9.0
90°	1.3	2.7	6.7	6.7	9.4	12.7
45°	0.7	1.5	3.6	3.6	5.1	6.9
22 1/2°	0.4	0.8	1.8	1.8	2.6	3.5

THRUST BLOCKING
N.T.S.

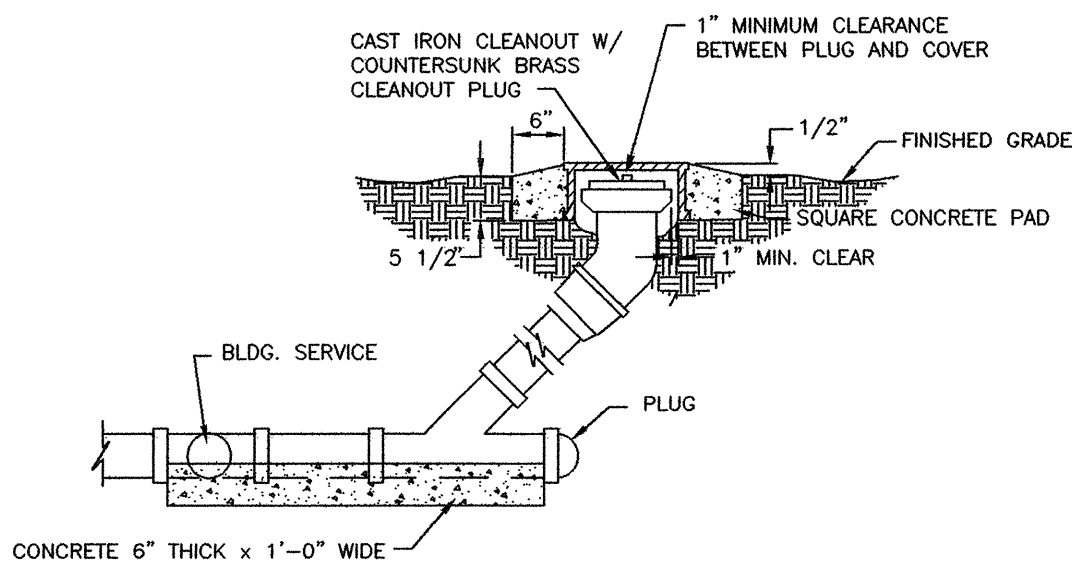


SEWER TRENCH & BEDDING DETAIL
N.T.S.

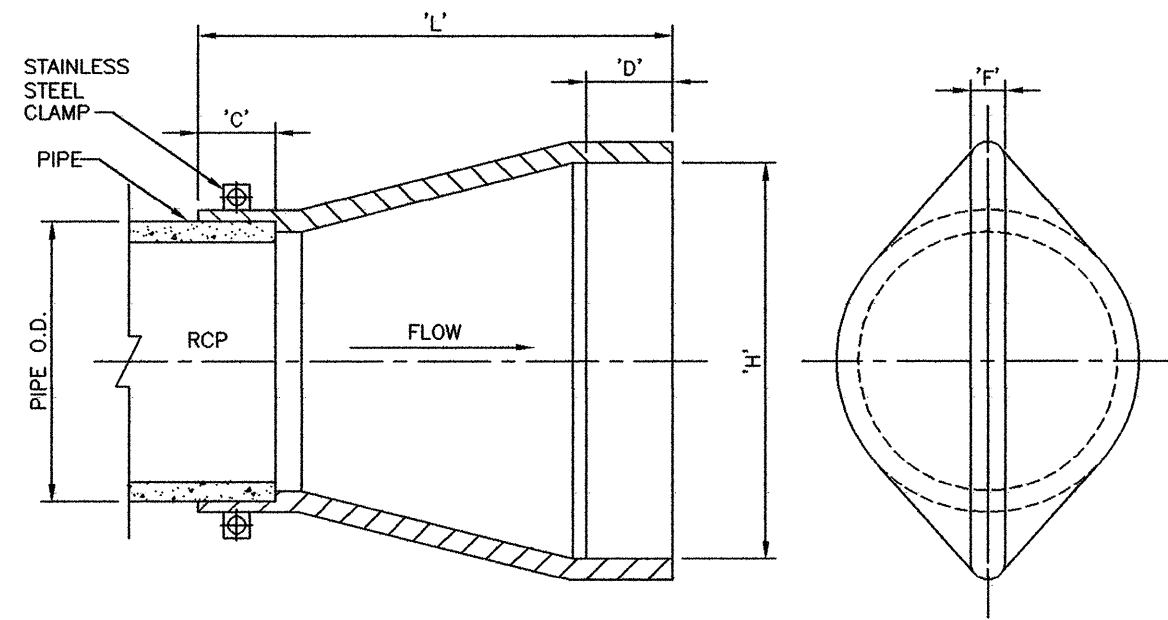
NOTE: CONTRACTOR SHALL INSTALL TEMPORARY BRACINGS, TRENCHBOX AND/OR SHEET PILING IF NECESSARY TO ENSURE STABILITY OF TRENCH UNTIL UTILITY IS FULLY BACKFILLED, INCIDENTAL TO PIPE INSTALLATION.



PLAN

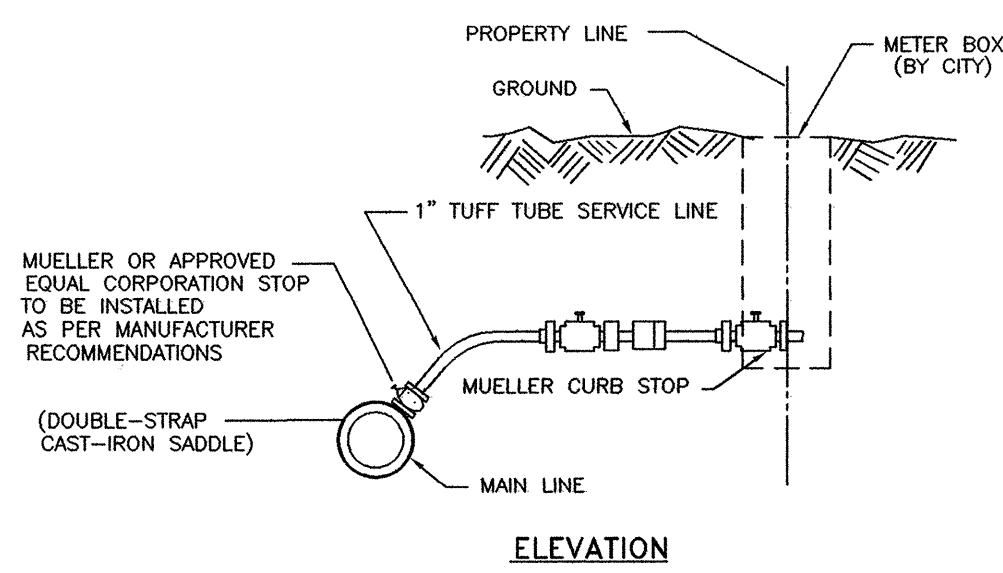


CLEANOUT DETAIL
N.T.S.

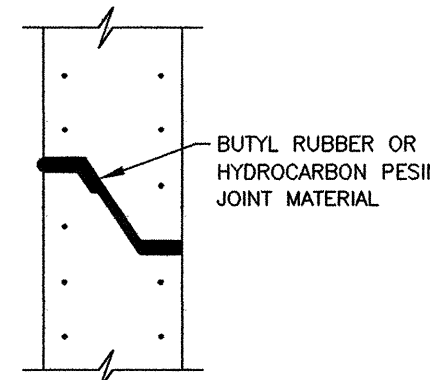


TIDEFLEX CHECK VALVE

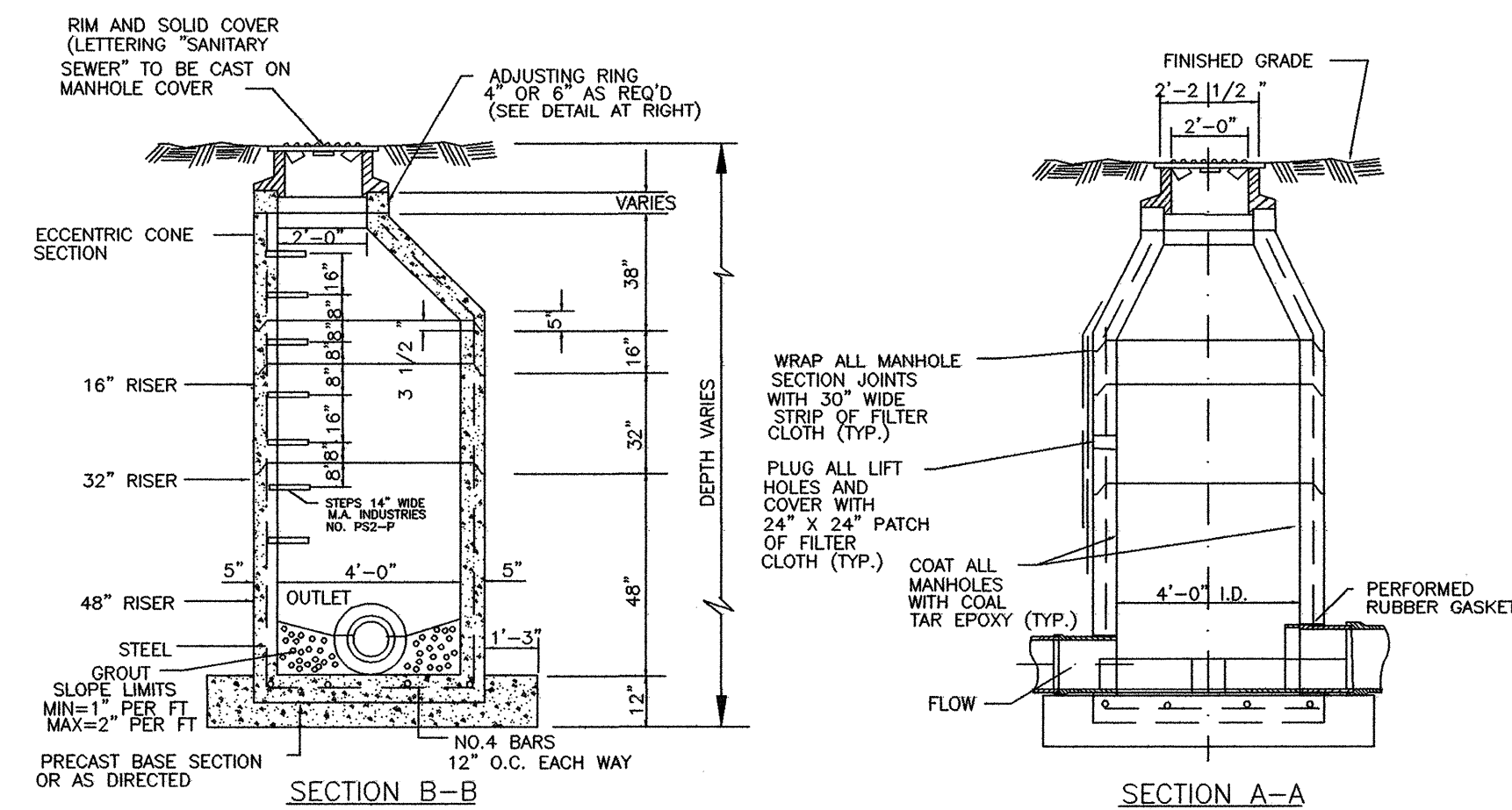
VALVE IS TO BE MOUNTED WITH THE OUTLET IN THE VERTICAL POSITION



TYPICAL WATER SERVICE CONNECTION
N.T.S.



TYPICAL PRECAST CONCRETE
MANHOLE JOINT DETAIL
NOT TO SCALE

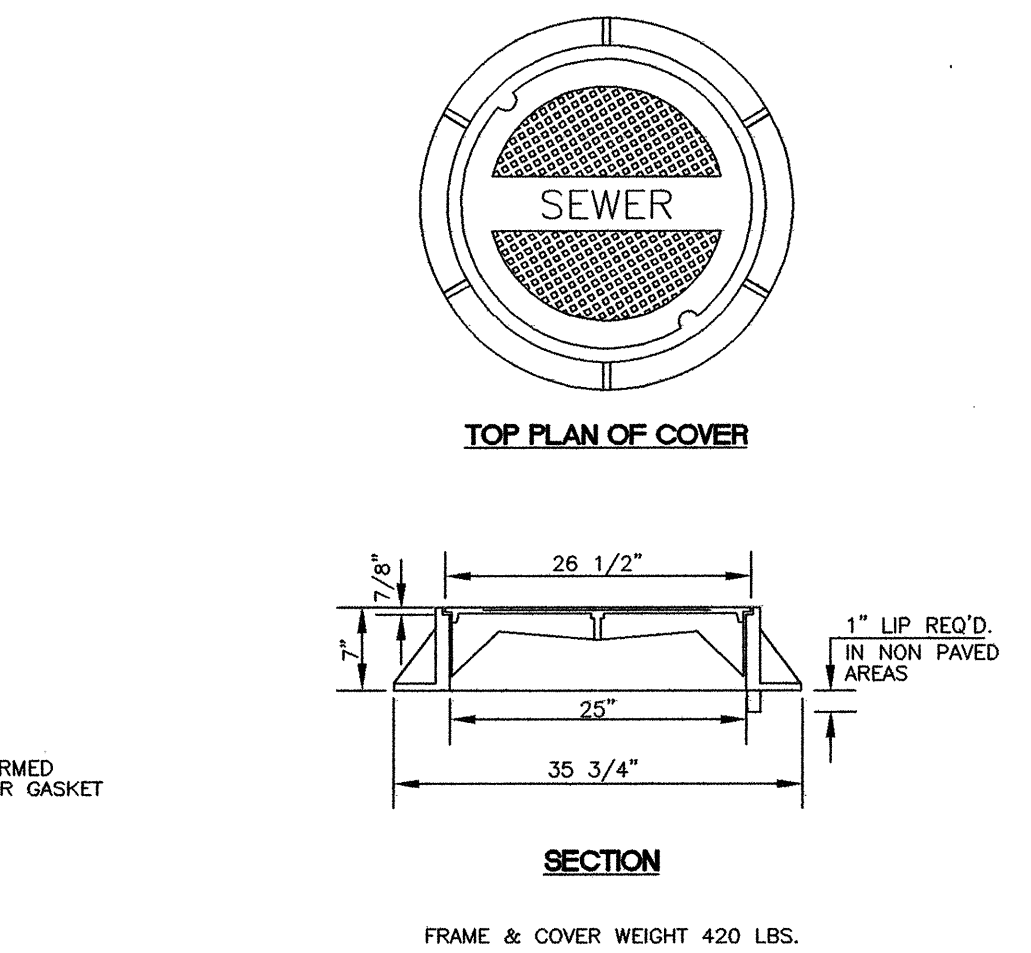


TYPICAL PRECAST CONCRETE
SEWER MANHOLE DETAIL
N.T.S.

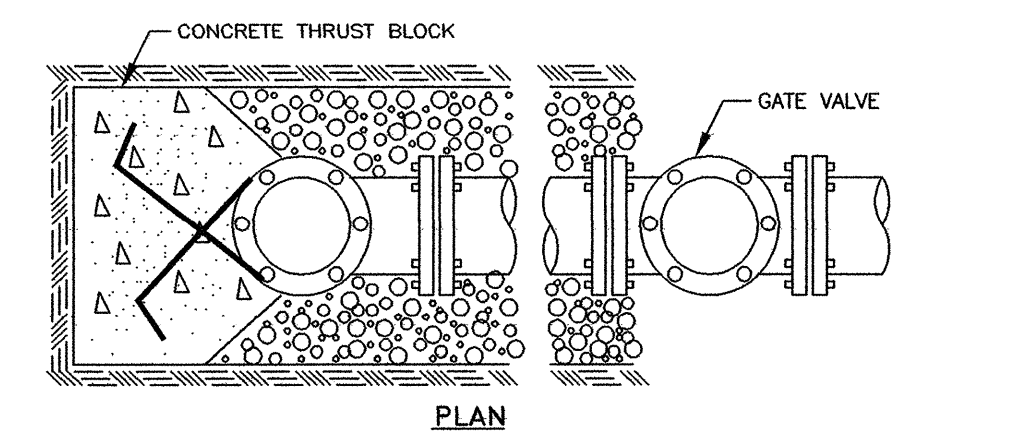
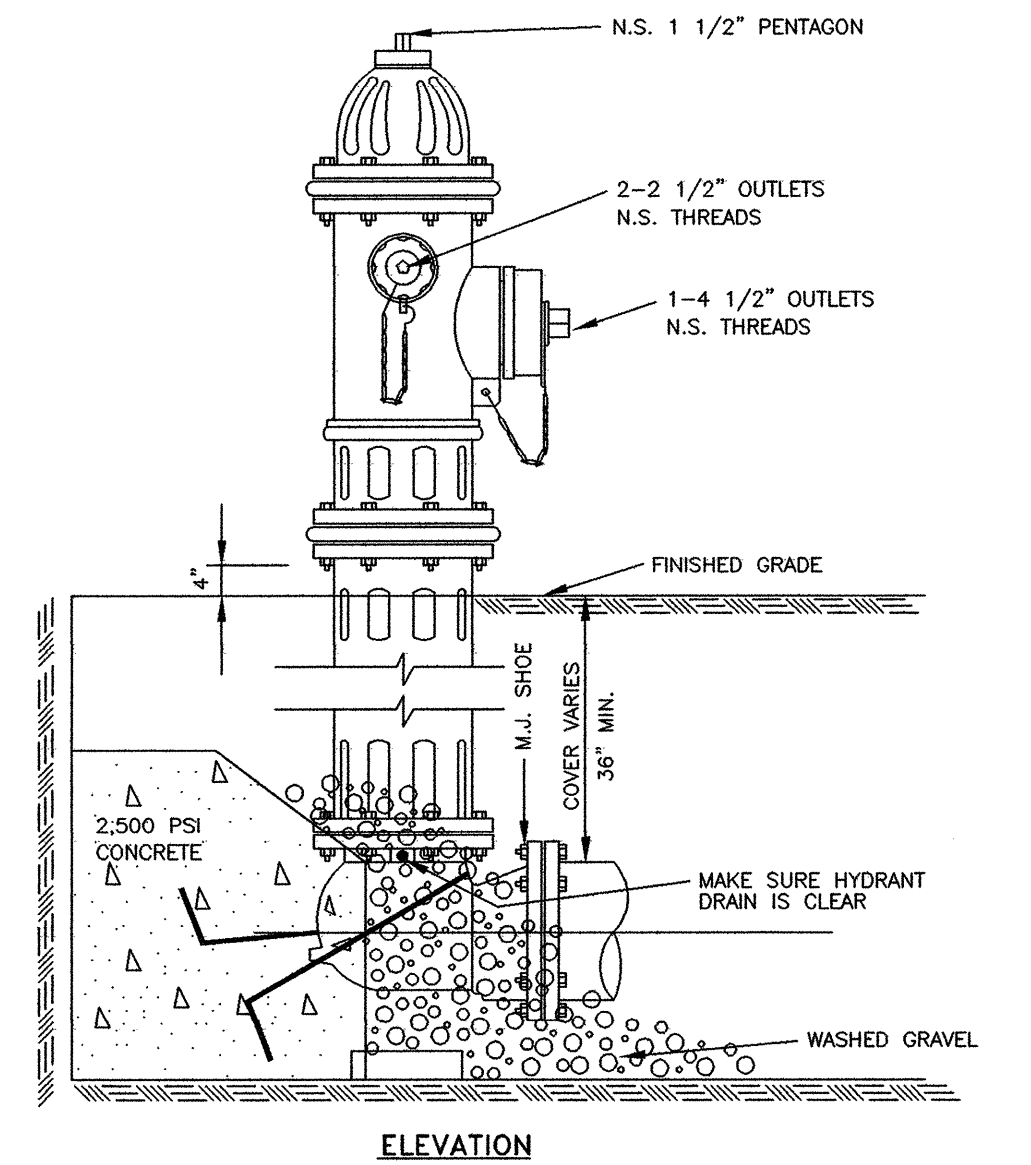
VALVE SIZE (NOM.)	PIPE O.D.	L	H	F
16"	16"	24"	22-1/4"	1-1/4"
18"	18"	26"	26-3/4"	1-1/4"
24"	24"	36"	37-1/4"	1-3/4"
30"	30"	38"	43-3/4"	2"
36"	36"	50"	51-3/8"	2-3/8"
42"	42"	64"	61-1/2"	2-1/2"

SANITARY SEWER NOTES:

- MANHOLE INTERIOR TO BE COATED WITH 20 MIL THICKNESS GLOTTEN TOP SERVICE BLACK BITUMINOUS COATING (OR APPROVED EQUAL) APPLIED IN ACCORDANCE WITH MANUFACTURE'S RECOMMENDATIONS.
- MAXIMUM PERMITTED INFILTRATION/EXFILTRATION IS 200 GALLONS PER INCH DIAMETER PER MILE PER DAY.
- PIPE TO MANHOLE CONNECTIONS: PVC PIPE - INSTALL PREMOLDED FLEXIBLE MANHOLE JOINT SEAL DEVICE TO CONNECT PIPE TO MANHOLE WALL.
- INSTALLATION OF SANITARY SEWER MAINS & SERVICES: WHEN A SEWER SERVICE LINE CROSSES ABOVE A WATER SUPPLY MAIN OR WITHIN 18" BELOW A WATER MAIN, OR WITHIN 10' ON EITHER SIDE, THE SEWER SERVICE OR MAIN SHALL BE 160 P.S.I. PVC WATER PIPE FOR A DISTANCE OF 10' EITHER SIDE OF THE WATER SUPPLY MAIN.

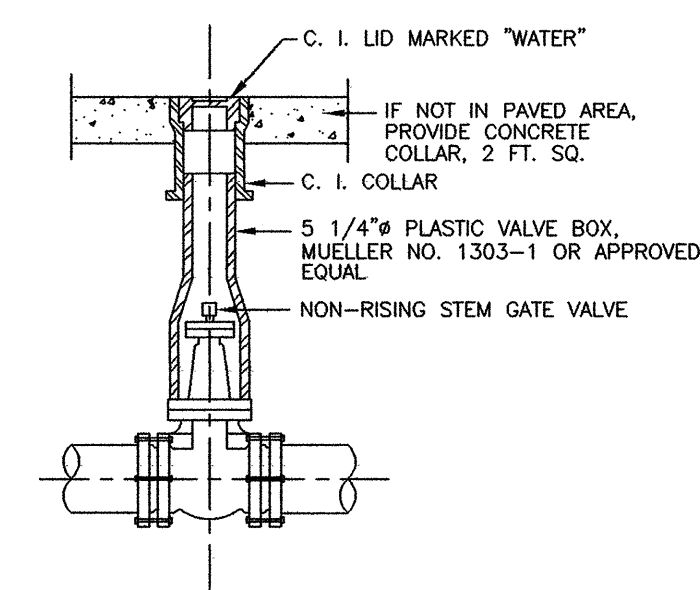


STANDARD MANHOLE FRAME AND COVER
NOT TO SCALE



TYPICAL FIRE HYDRANT INSTALLATION

NOTE: GATE VALVES WILL BE REQUIRED ON ALL FIRE HYDRANT LEGS.
NOT TO SCALE



GATE VALVE BOX & COVER
N.T.S.

NOTES: 1. VALVE BOX SECTIONS SHALL BE OF THE ADJUSTABLE SCREW TYPE.
2. FURNISH PLASTIC VALVE BOX EXTENSIONS AS REQUIRED.

DATE	REVISION

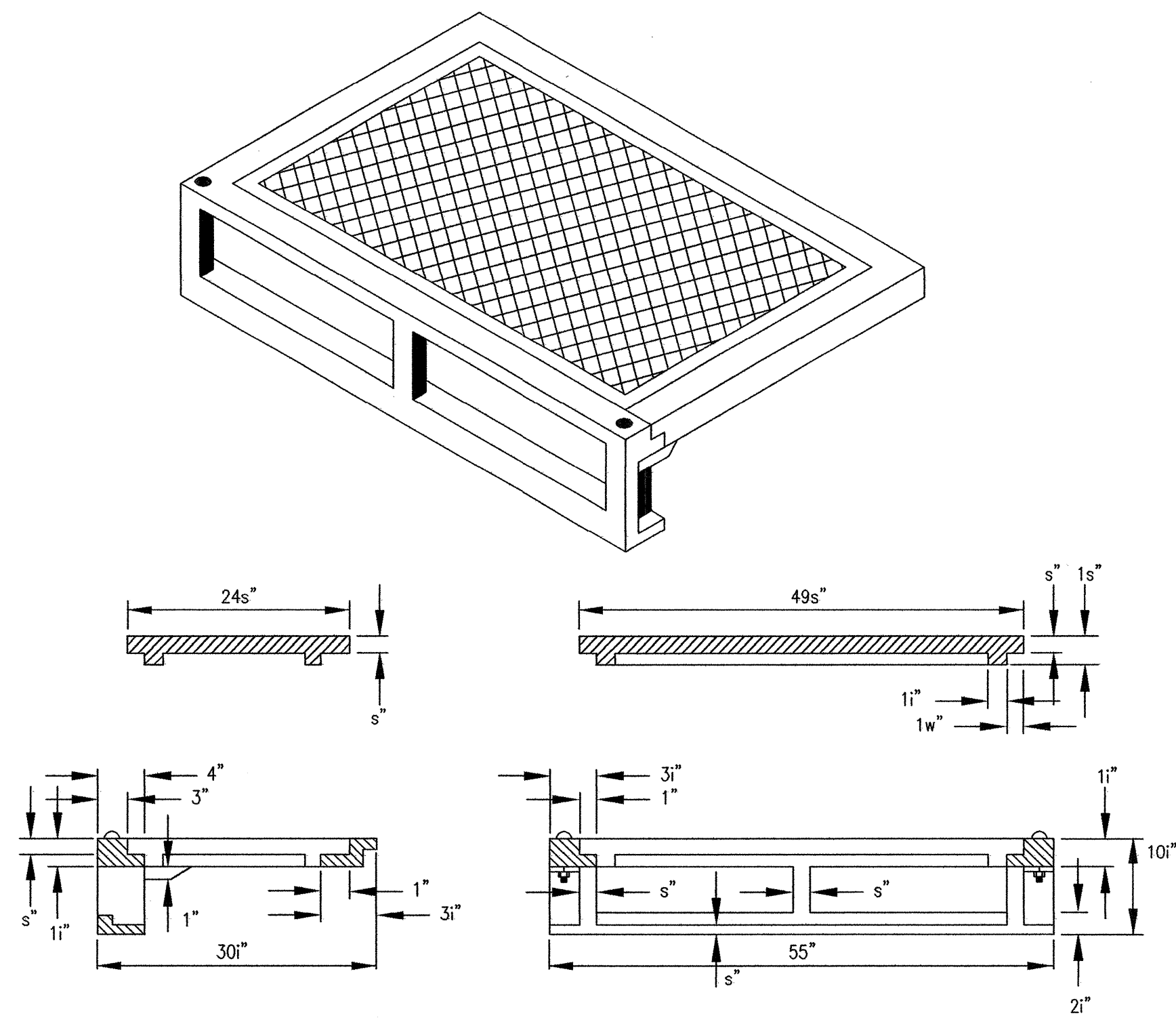
DRAWING NAME: D:\PROJECTS\421-06	SCALE: NTS
DRAWN BY: NFW	PROJECT NO.: 421-06-001
DATE OF DRAWING: 3-06	APPROVED BY:
CHECKED BY:	

B BANKS ENGINEERING & SURVEYING, INC.
115 LONE WOLF DRIVE SUITE B * MADISON, MS 39110
OFFICE (601) 407-1240 * FAX (601) 407-1245

CLIENT:
COPELAND AND JOHNS
P.O. BOX 10488
JACKSON, MISSISSIPPI 39289

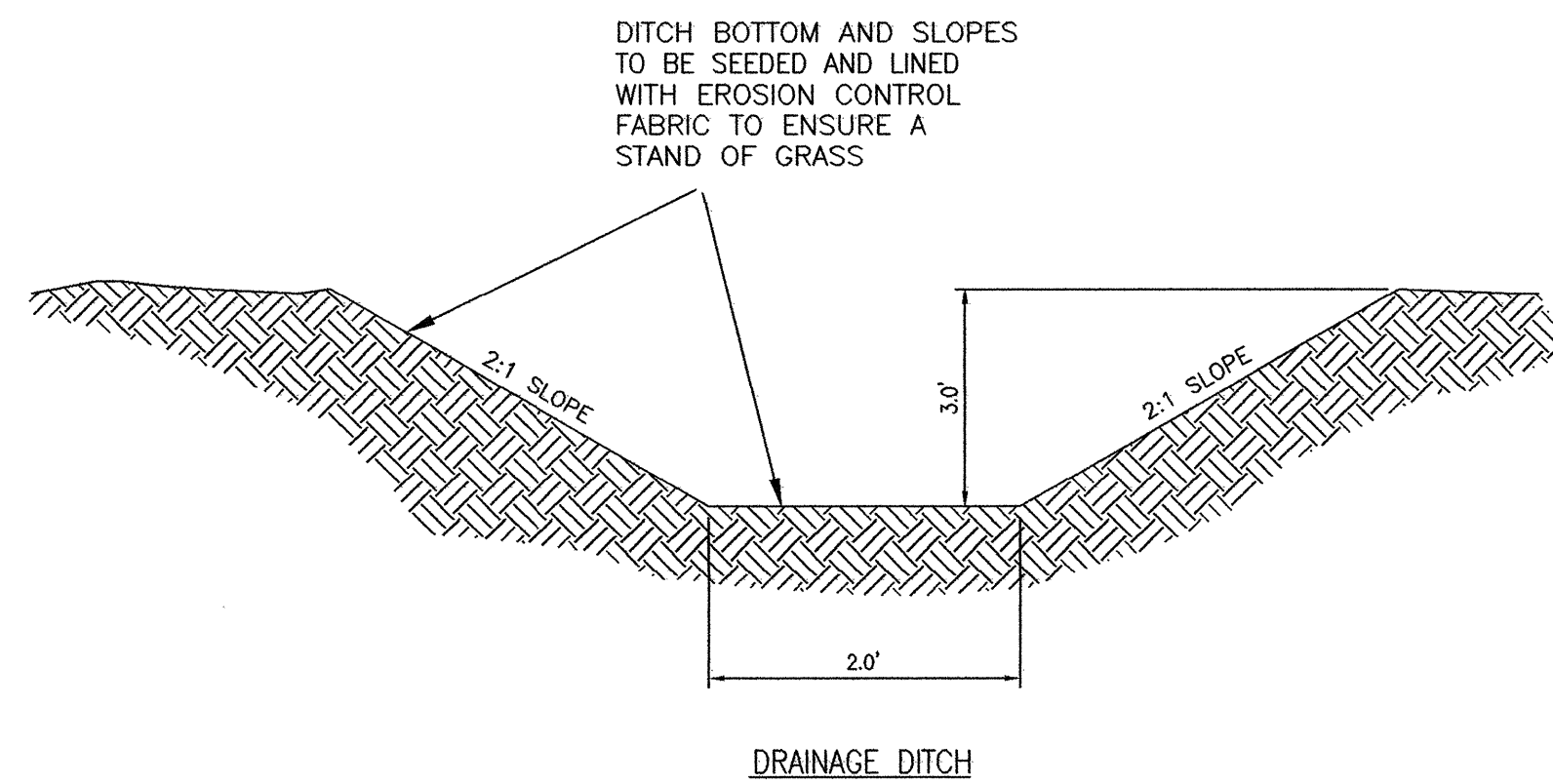
PROJECT:
STANDARD WATER AND SEWER DETAILS
EAST MARKETRIDGE DRIVE EXTENSION (ASBULT)

SHEET NO.
9

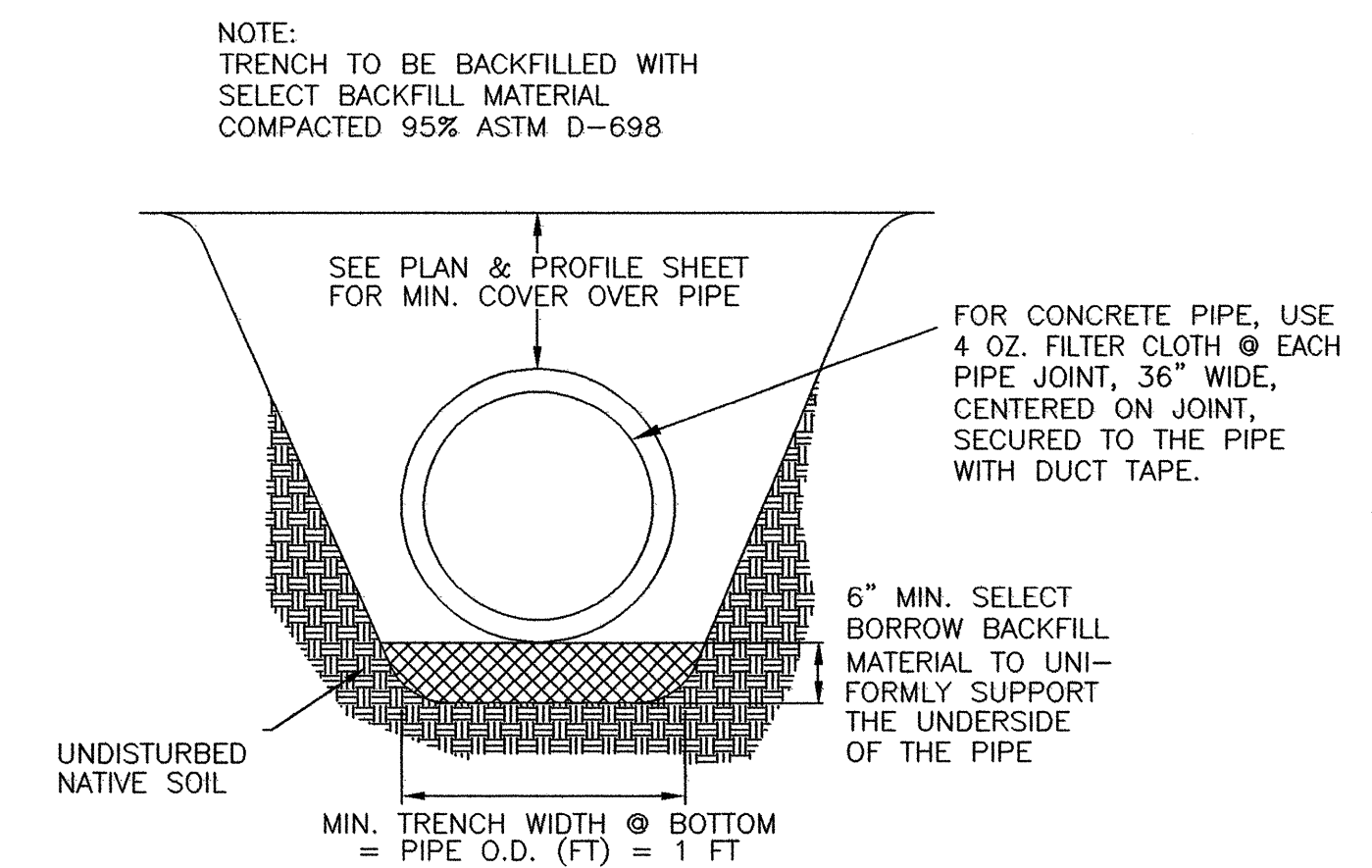


STANDARD CURB INLET CASTING

(VULCAN RCB-7)
N.T.S.



TYPICAL DITCH DETAIL



NOTE: NO LIFTING HOLES SHALL BE ALLOWED
SEE SPECIFICATIONS

N.T.S.

STORM DRAIN BEDDING DETAIL

DATE	REVISION

DRAWING NAME: D:\PROJECTS\421-06	
DRAWN BY: NPW	SCALE: NTS
DATE OF DRAWING: 3-06	PROJECT NO.: 421-06-001
CHECKED BY: _____	APPROVED BY: _____

B **BANKS ENGINEERING & SURVEYING, INC.**
115 LONE WOLF DRIVE SUITE B * MADISON, MS 39110
OFFICE (601) 407-1240 * FAX (601) 407-1245

CLIENT:
COPELAND AND JOHNS
P.O. BOX 10488
JACKSON, MISSISSIPPI 39289

PROJECT:
DRAINAGE AND GRADING DETAILS
EAST MARKETRIDGE DRIVE EXTENSION (ASBUILT)

SHEET NO.
10