

HIGHLAND COLONY LAND COMPANY

EAST RENAISSANCE ROAD

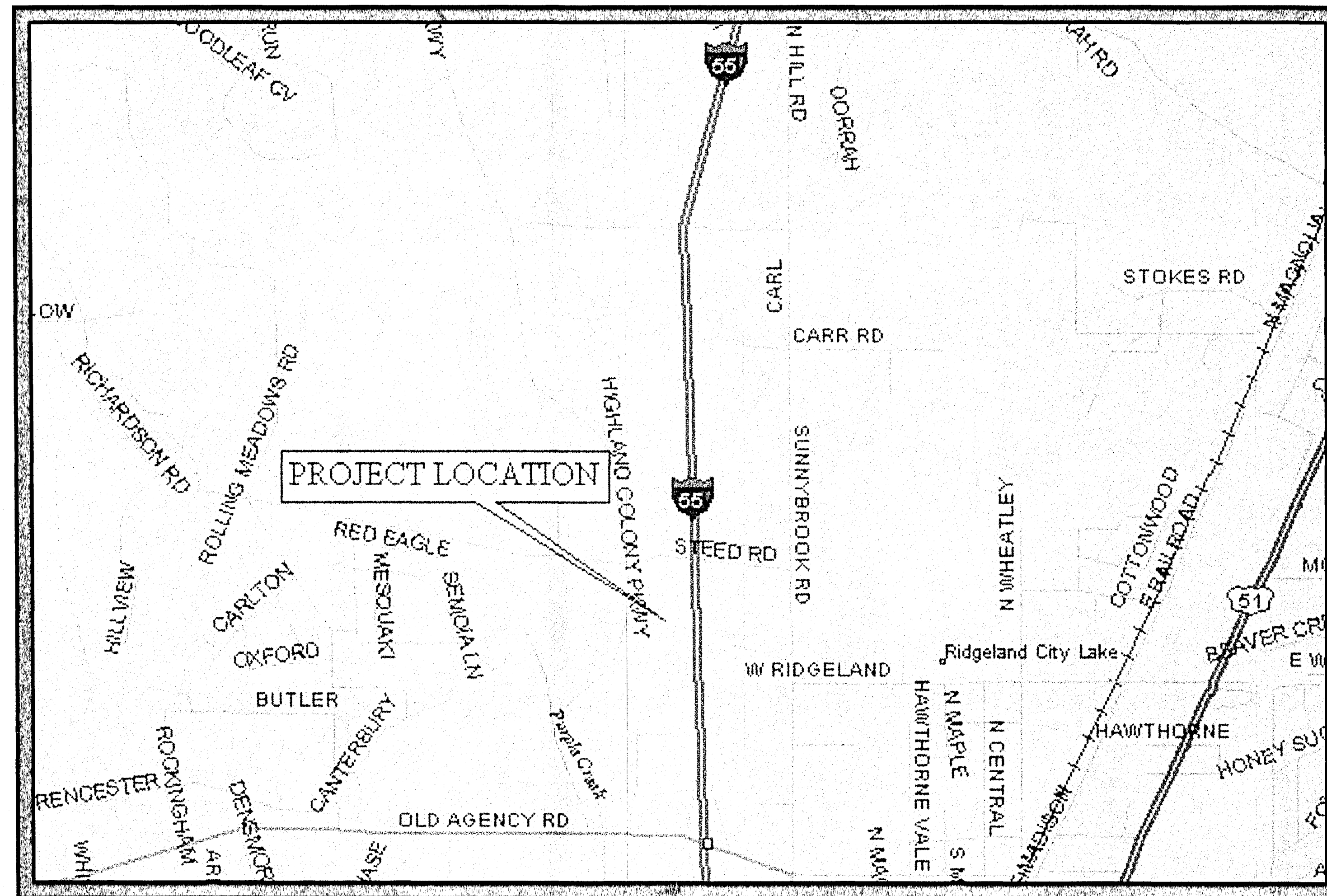
CITY OF RIDGELAND, MS

MAY 3, 2007

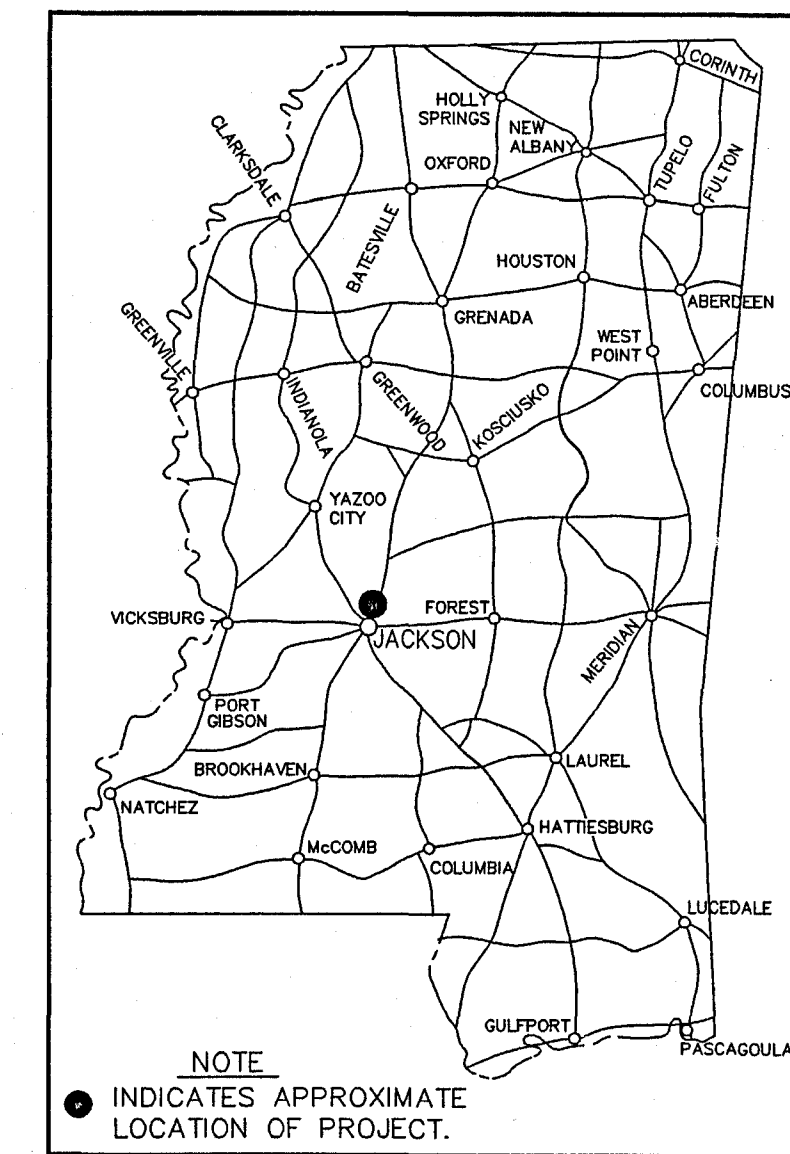
WATER "AS-BUILT" PLANS



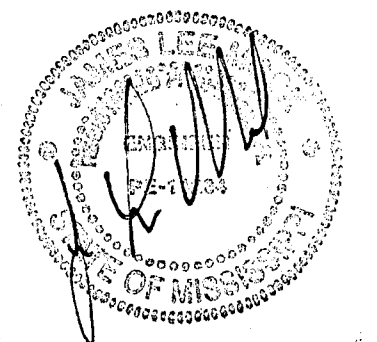
DEVELOPED BY:
 HIGHLAND COLONY LAND COMPANY
 1052 HIGHLAND COLONY PARKWAY, SUITE 202
 RIDGELAND, MS 39157
 PHONE: (601) 853-8000



VICINITY MAP
 SCALE: 1"=1000'



LOCATION MAP



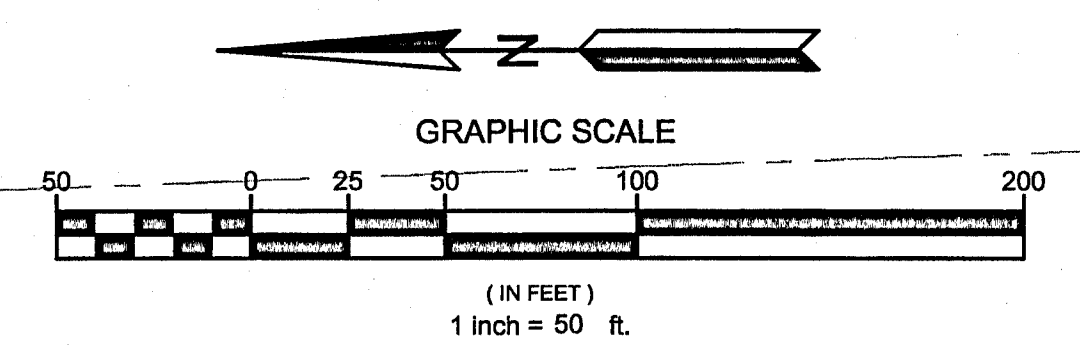
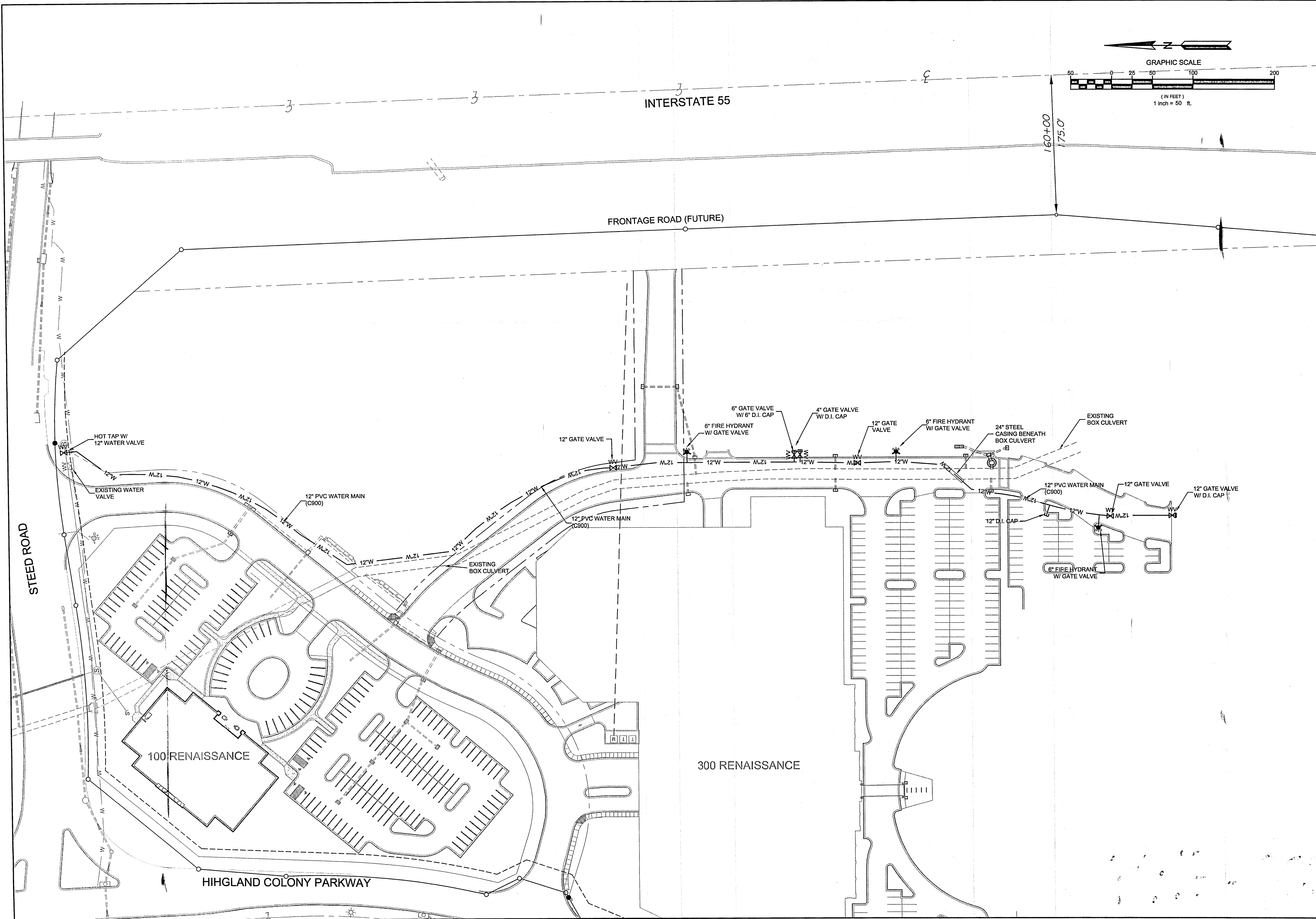
INDEX

CONTENTS	SHEET NO.
TITLE SHEET	1.1
WATER DISTRIBUTION PLAN	2.1
WATER DISTRIBUTION SYSTEM DETAILS	2.2



Consulting Engineers
 P.O. Box 150
 Columbia Ms, 39429
 (601)731-2600

PWP-00845



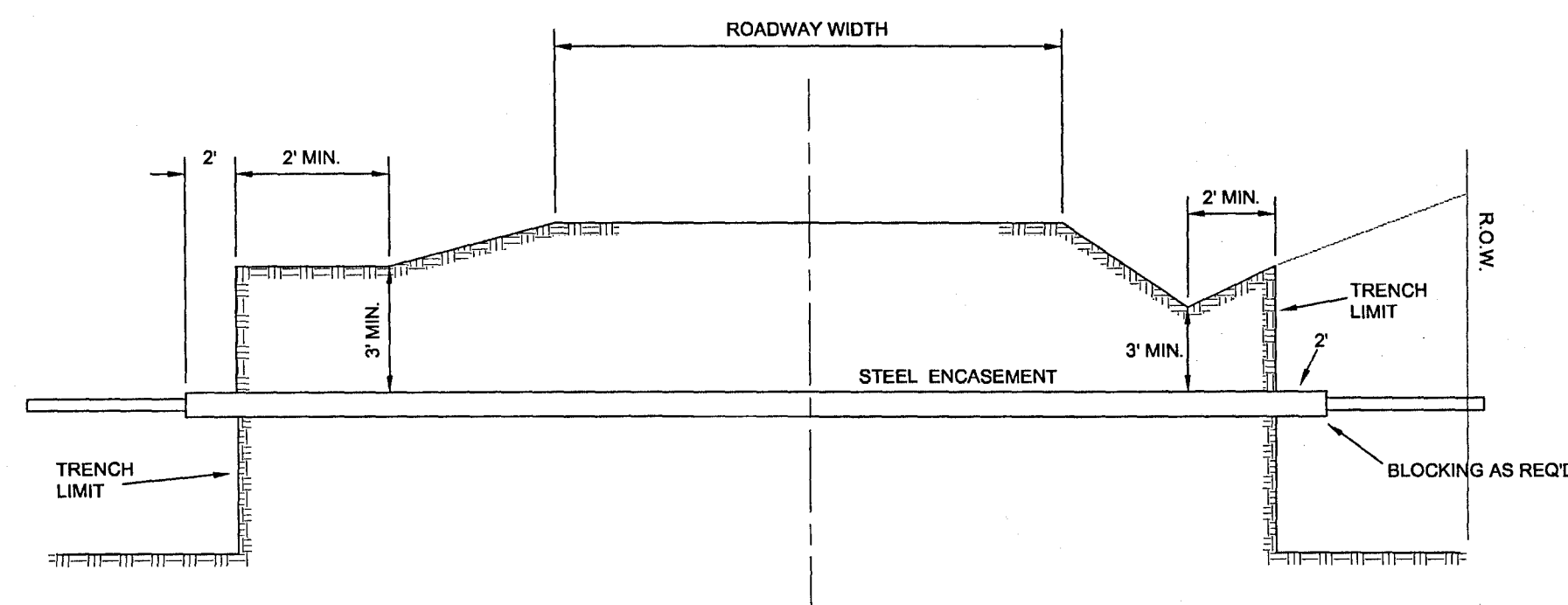
Drawn By:	M. BULL
Checked By:	L. MOOK
Scale:	1"=50'
Date:	MAY 3, 2007
No.	
Date	
Revisions	
By	

DUNGAN
DE
 Engineering, PA
 Consulting Engineers
 1574 Highway 98 East
 P.O. Box 150
 Columbia, MS 39429
 (T) 601-731-2600
 (F) 601-736-6501

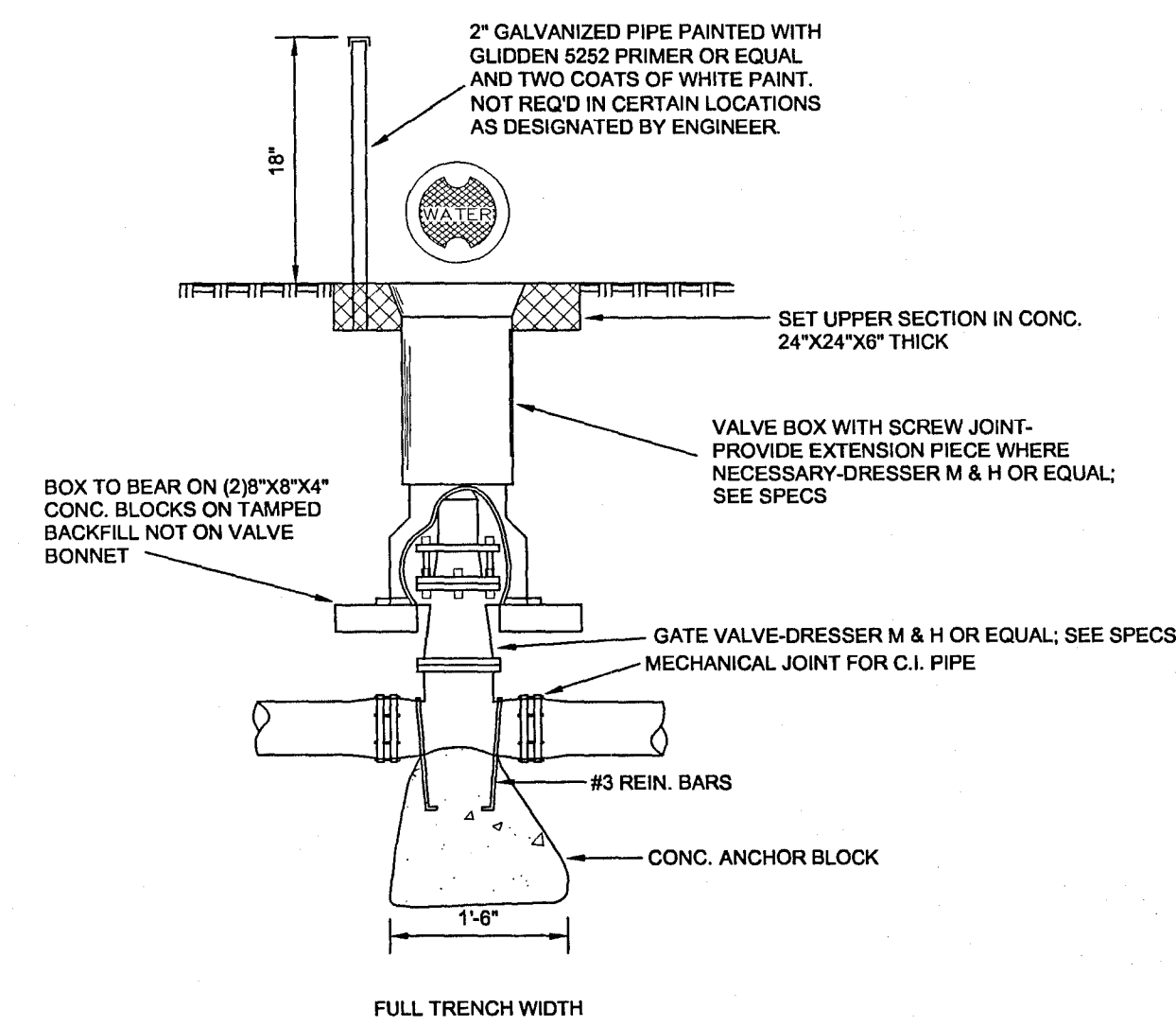
HIGHLAND COLONY LAND COMPANY
 EAST RENAISSANCE ROAD
 WATER "AS-BUILT" PLANS
 CITY OF RIDGELAND, MISSISSIPPI

 CONTENTS: WATER DISTRIBUTION PLAN

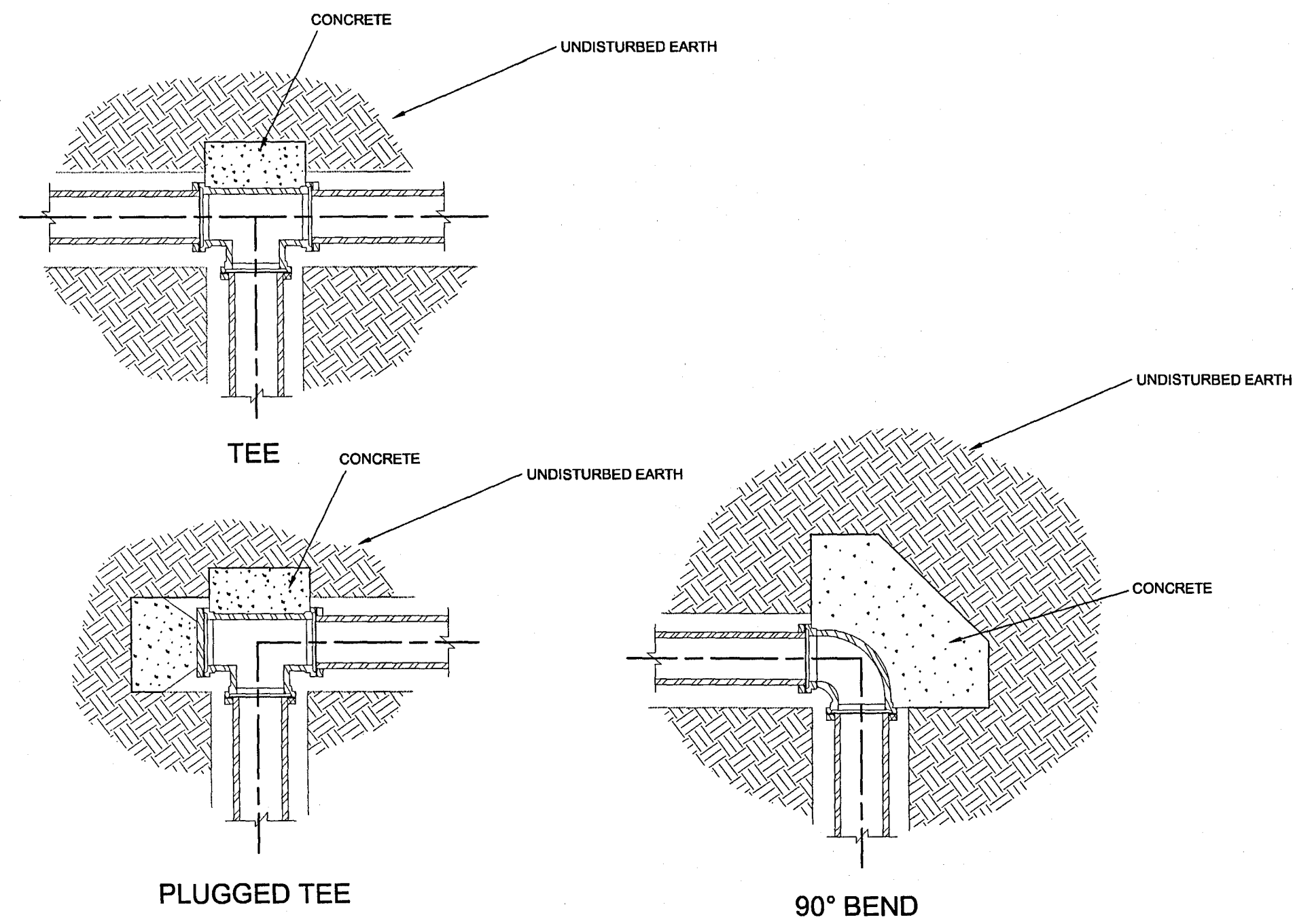
Job No. 1586C005
 Sheet (No.)
2.1
 Sheet 2 of 3 Sheets



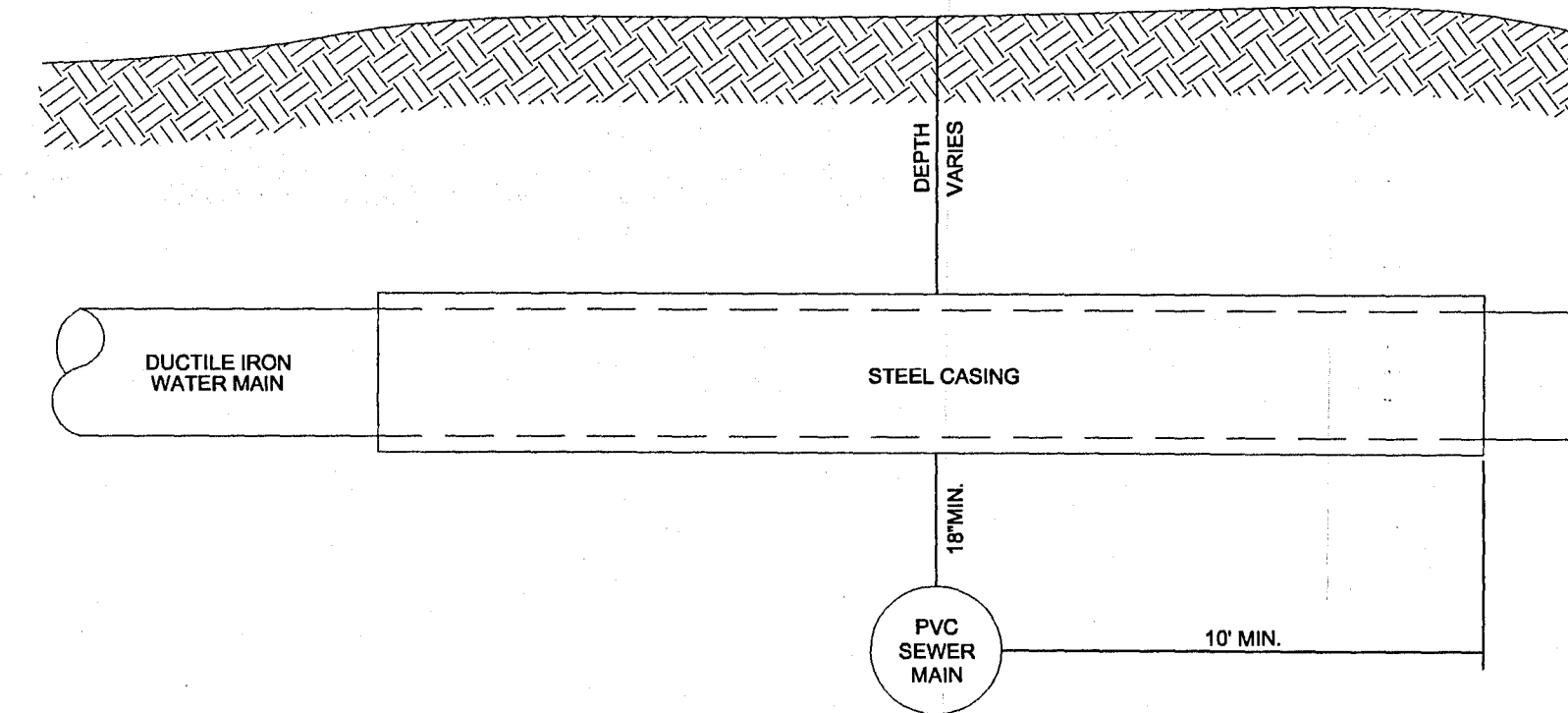
TYPICAL STREET CROSSING



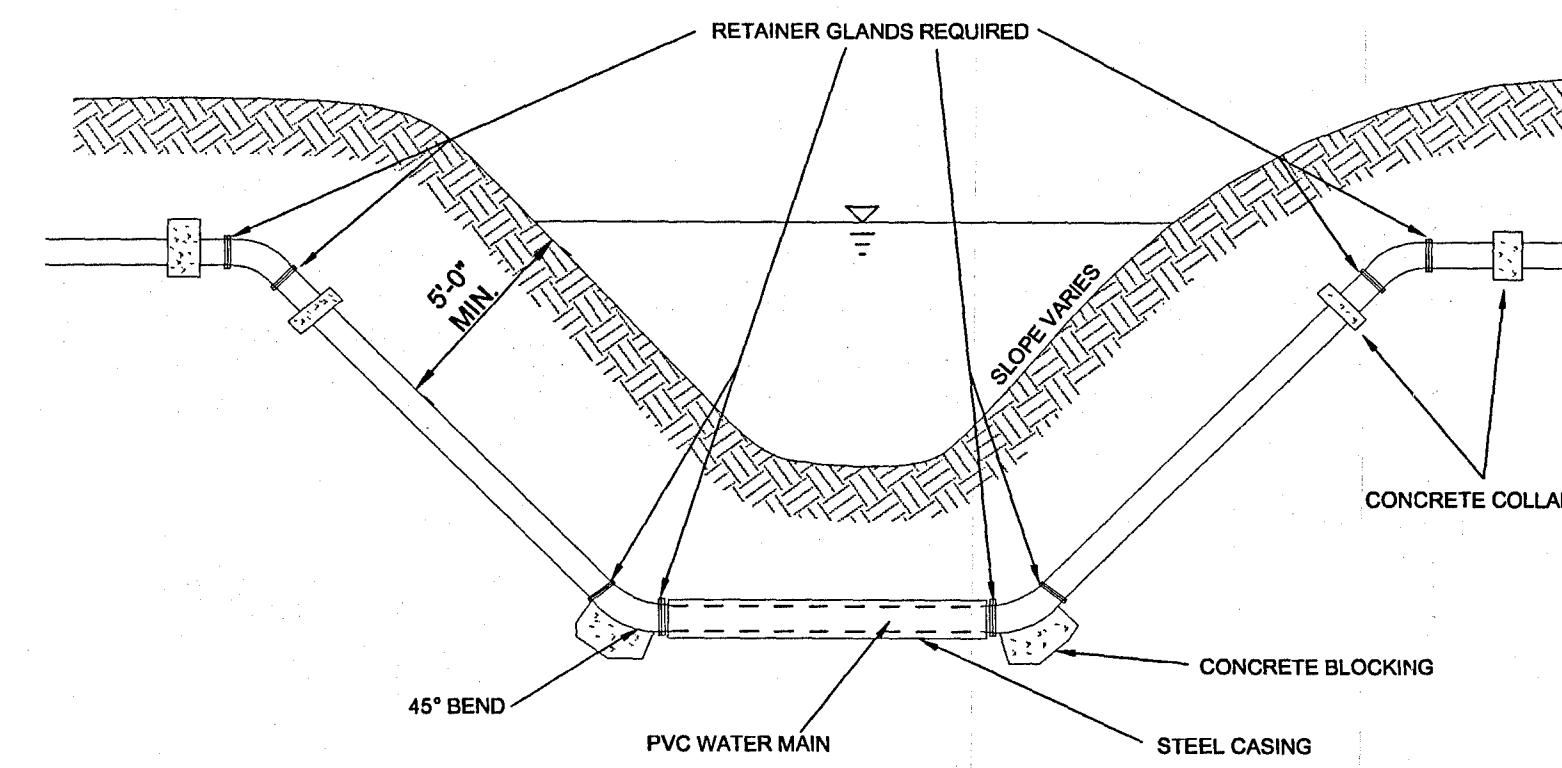
GATE VALVE DETAIL FOR MAINS 2" DIA. & OVER



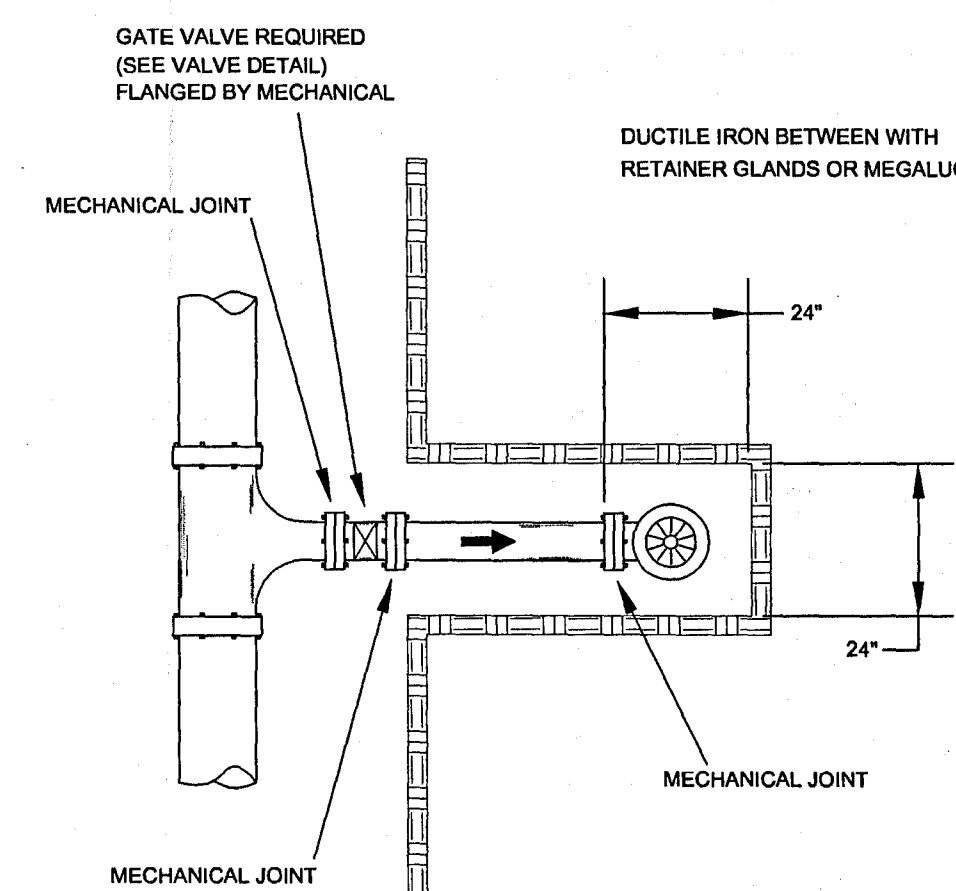
TYPICAL BLOCKING DETAILS



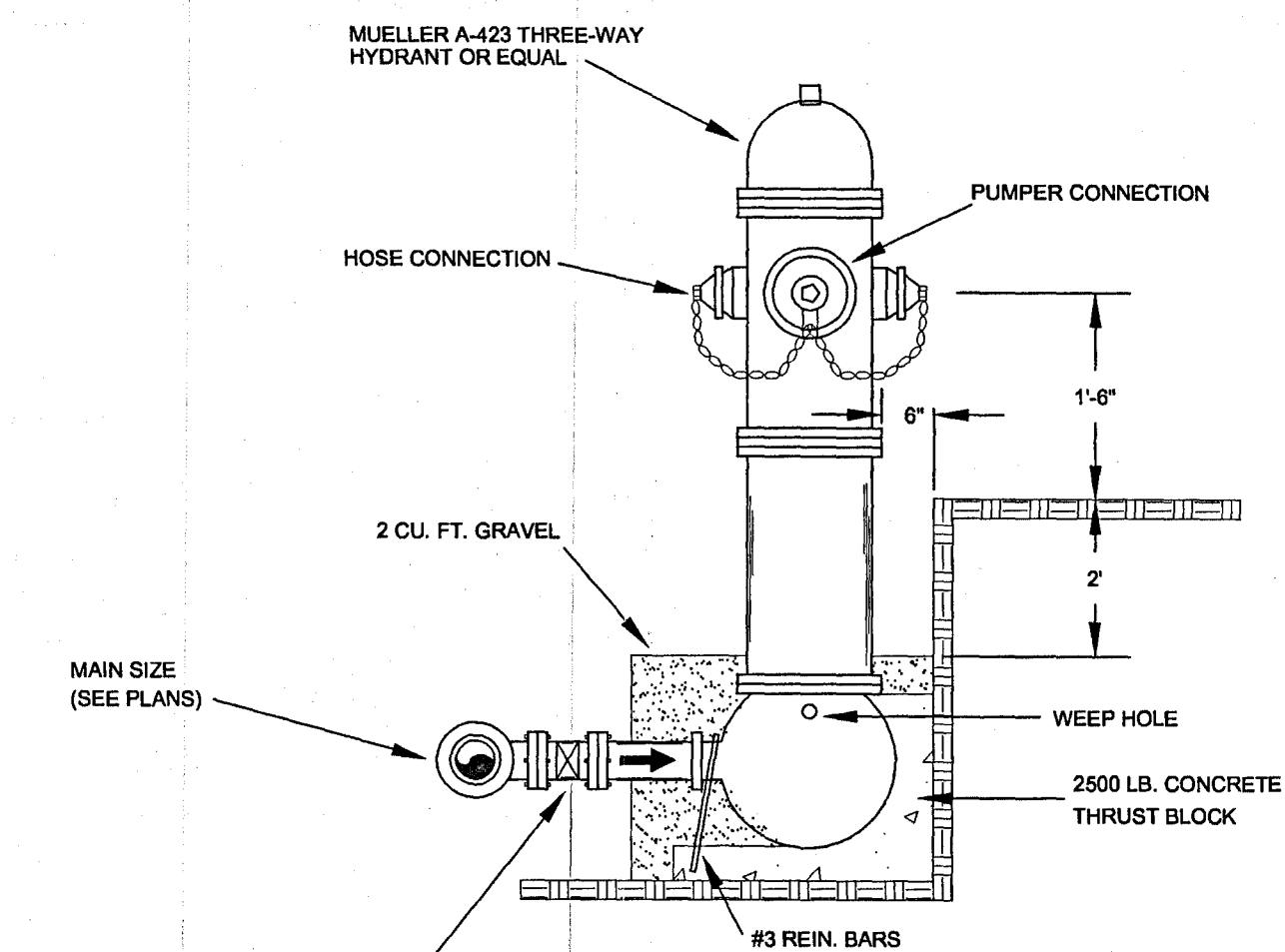
WATER - SEWER INTERSECTION DETAIL



TYPICAL DITCH CROSSING DETAIL



PLAN



ELEVATION

TYPICAL FIRE HYDRANT DETAIL

DUNGAN
DE
Engineering, PA
Consulting Engineers
1574 Highway 88 East
P.O. Box 150
Columbia, MS 39429
(T) 601-731-2600
(F) 601-736-6501

HIGHLAND COLONY LAND COMPANY
EAST RENAISSANCE ROAD
WATER "AS-BUILT" PLANS
CITY OF RIDGLAND, MISSISSIPPI

Job No. 1586C005

Sheet No.

2.2

Sheet 3 of 3
3 Sheets

Drawn By:	M. BULL	By:	
Checked By:	L. MOCK	Revisions:	
Scale:	N.T.S.	Date:	
Date:	MAY 3, 2007		

Contents: WATER DISTRIBUTION SYSTEM DETAILS