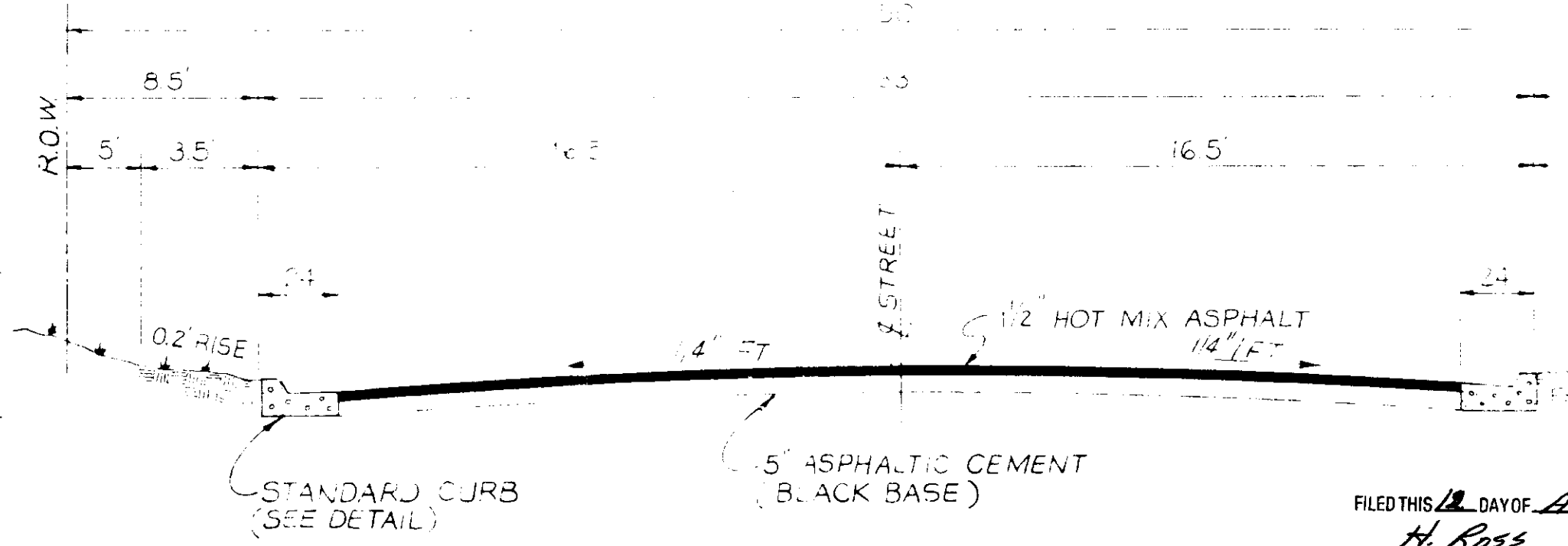


THE LIMITS OF LANE SHOWN ON THIS DRAWING IS IN THE LIMITS OF ZONE A-1, A-2, B & C ACCORDING TO COMMUNITY NO 28010 0005, DATED 3-1-78

- NOTE:
1. CONTRACTOR SHALL LOCATE WATER, SEWER & GAS SERVICES TO ABANDONED SONIC DRIVE INN & COORDINATE WITH APPROPRIATE UTILITY COMPANIES THEIR REMOVAL & OR RELOCATE PLUMBING OUTS. IN THE PROPOSED STREET RIGHT-OF-WAY PRIOR TO STREET CONSTRUCTION.
  2. CONDITION OF SANITARY SEWER TO BE VERIFIED DURING STREET CONSTRUCTION. OVER EXCAVATION WILL REQUIRE CONCRETE ENCASEMENT
  3. ABANDONED SONIC DRIVE INN & CONCRETE PAVEMENT PARKING LOT SHALL BE REMOVED & PAID FOR UNDER CLEARING & GRUBBING UNIT PRICE.
  4. WATER MAIN MATERIAL 10 FEET EITHER SIDE OF THE 10" SANITARY SEWER CROSSING SHALL BE CLASS 50 DUCTILE IRON PIPE

- NOTE:
1. 2" x 3/4" DOWEL BARS 15' LONG REQ'D AT EXPANSION JOINTS WHICH SHALL BE HELD IN PLACE BY CHAIRS OR SUPPORTS
  2. ALL CURB CUTTER & DEPRESSIONS SHALL BE MANUFACTURED OF 1:2:4 MIX CONCRETE

CURB DETAIL  
N.T.S.



TYPICAL STREET SECTION  
N.T.S.

FILED THIS 22 DAY OF August 1987  
H. ROSS  
CITY OF RIDGELAND

REYNOLDS ENGINEERING, INC.  
POST OFFICE BOX 528 JACKSON, MISSISSIPPI 39205  
PHONE 392-5418

FIRST SOUTHEAST CORPORATION

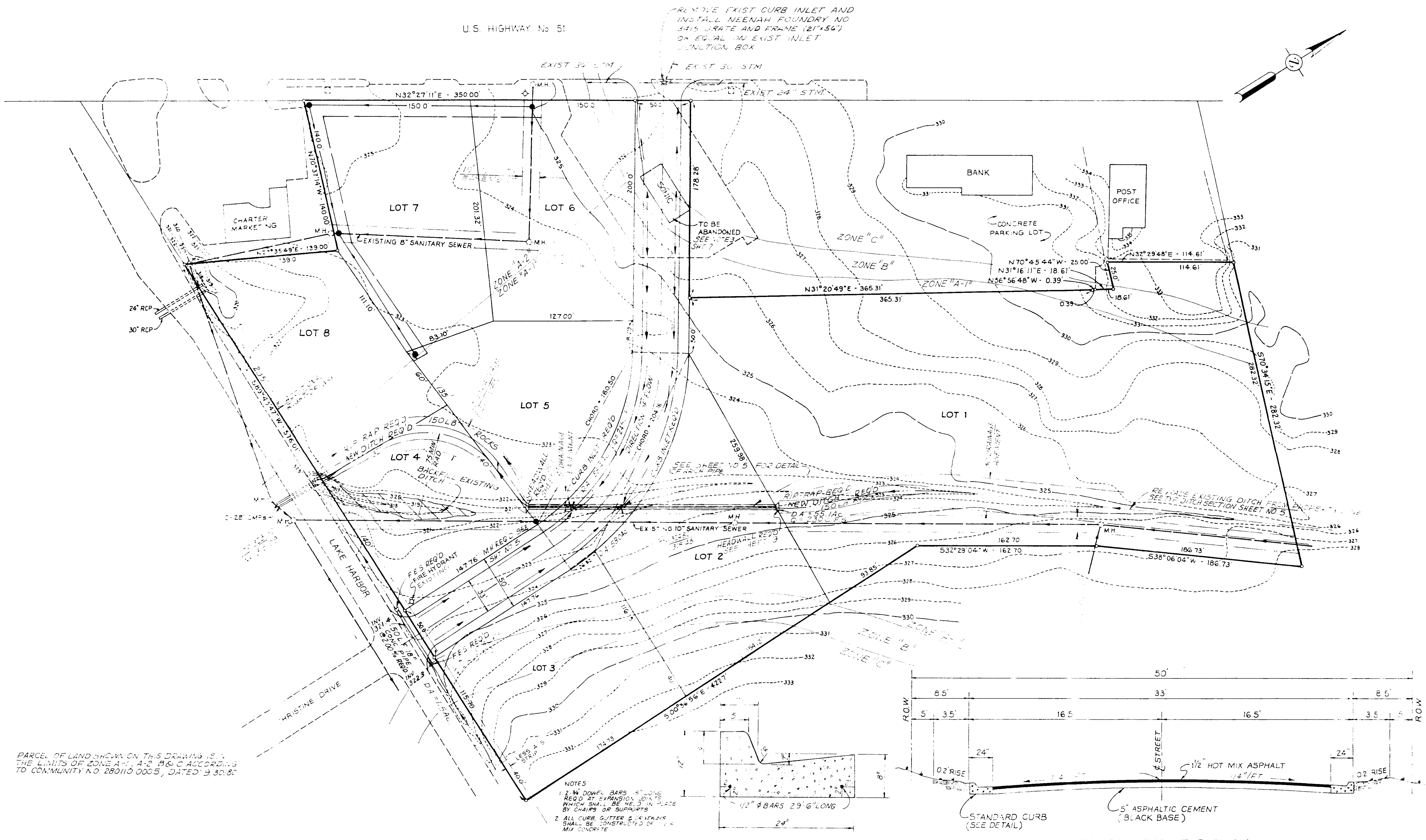
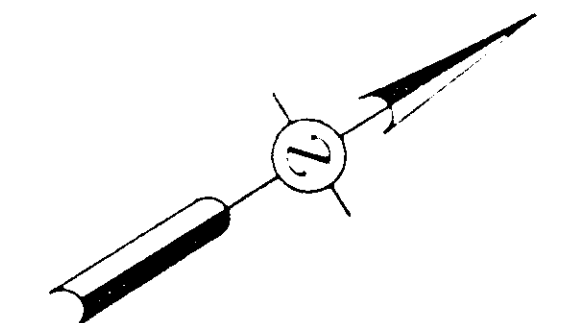
RIDGELAND, MISSISSIPPI

8-4-87

PWP-00600

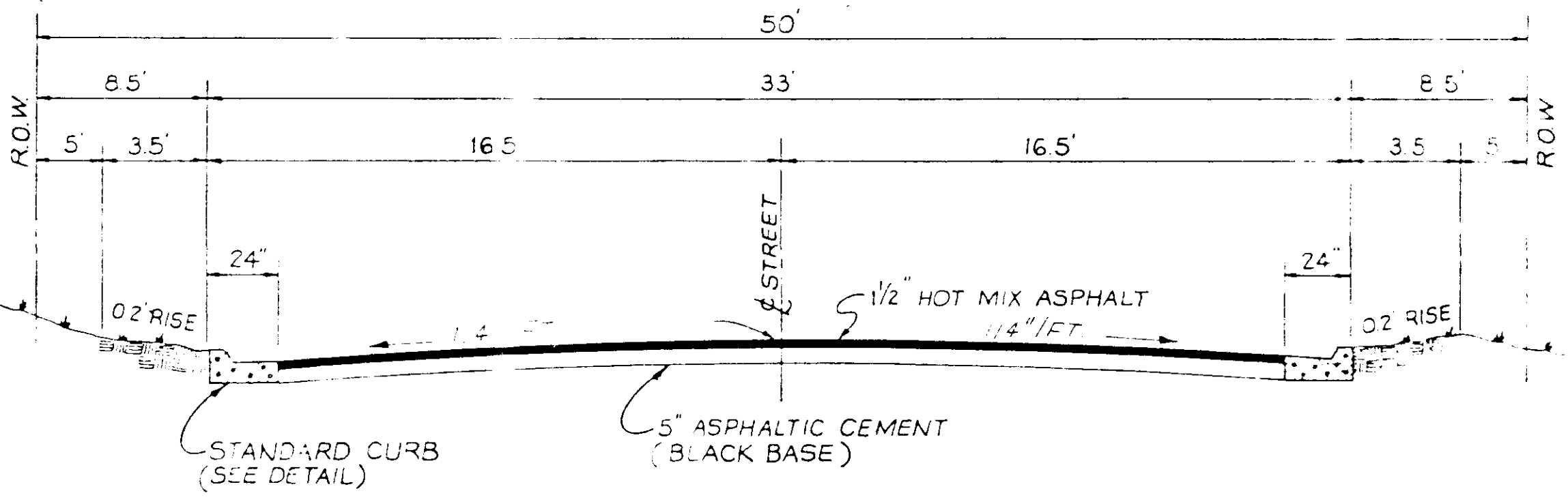
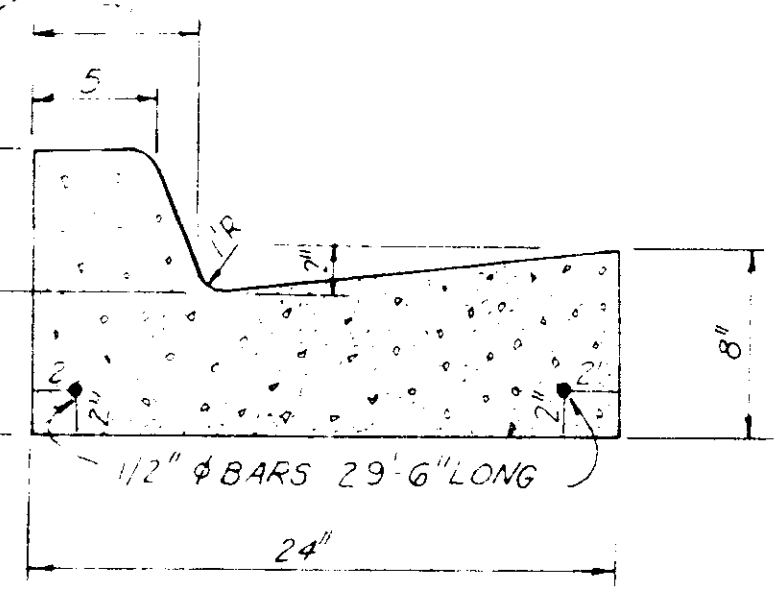
51 PLAZA

U.S. HIGHWAY No 51



PARCEL OF LAND SHOWN ON THIS DRAWING IS THE LIMITS OF ZONE A-1, A-2, B & C ACCORDING TO COMMUNITY NO. 280110 0005, DATED 9-30-80

- NOTES
- 2-3/4" DOWEL BARS 5'-0" LONG REQ'D AT EXPANSION JOINTS WHICH SHALL BE HELD IN PLACE BY CHAIRS OR SUPPORTS
  - ALL CURB, GUTTER & RIVERS SHALL BE CONSTRUCTED OF 10% MIX CONCRETE



DRAINAGE & GEOMETRIC LAYOUT

CURB DETAIL

TYPICAL STREET SECTION

NTS.

REYNOLDS ENGINEERING, INC.  
POST OFFICE BOX 128  
LADYBON MISSISSIPPI 39265

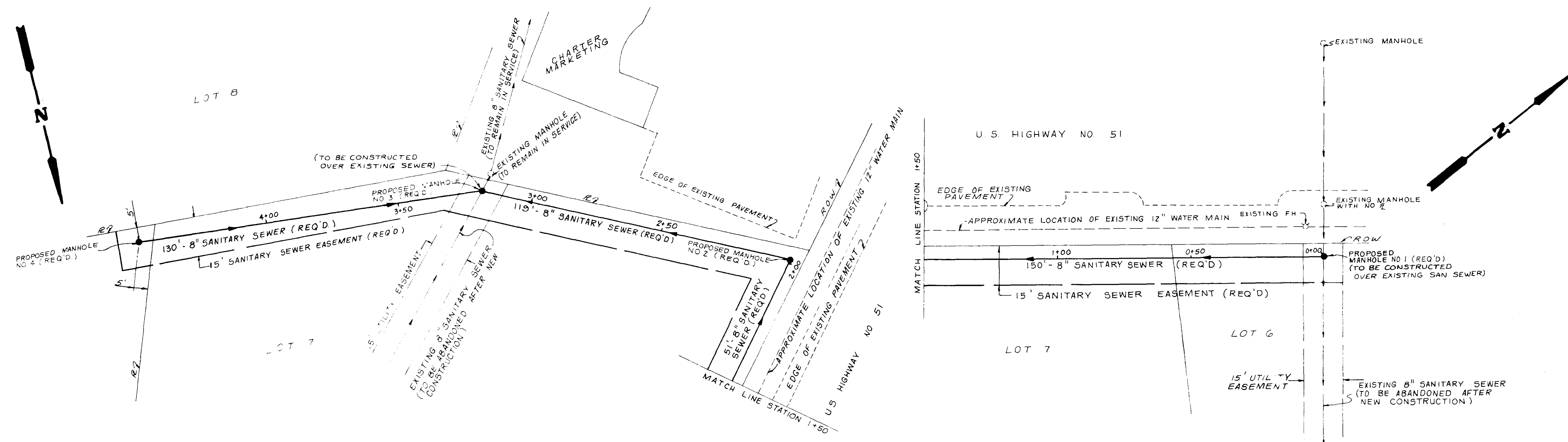
FIRST SOUTHEAST CORPORATION

RIDGELAND, MISSISSIPPI

DATE	REVISED BY	BY	DRAWN BY
2-10-87		SAM	
8-3-87	PRJ: B SAN SEWER	SAM	
DATE	SCALE	BOOK	PAGE
8-11-86	1" = 40'		
PROJECT NO.	86-075		



PLAN



PROFILE

