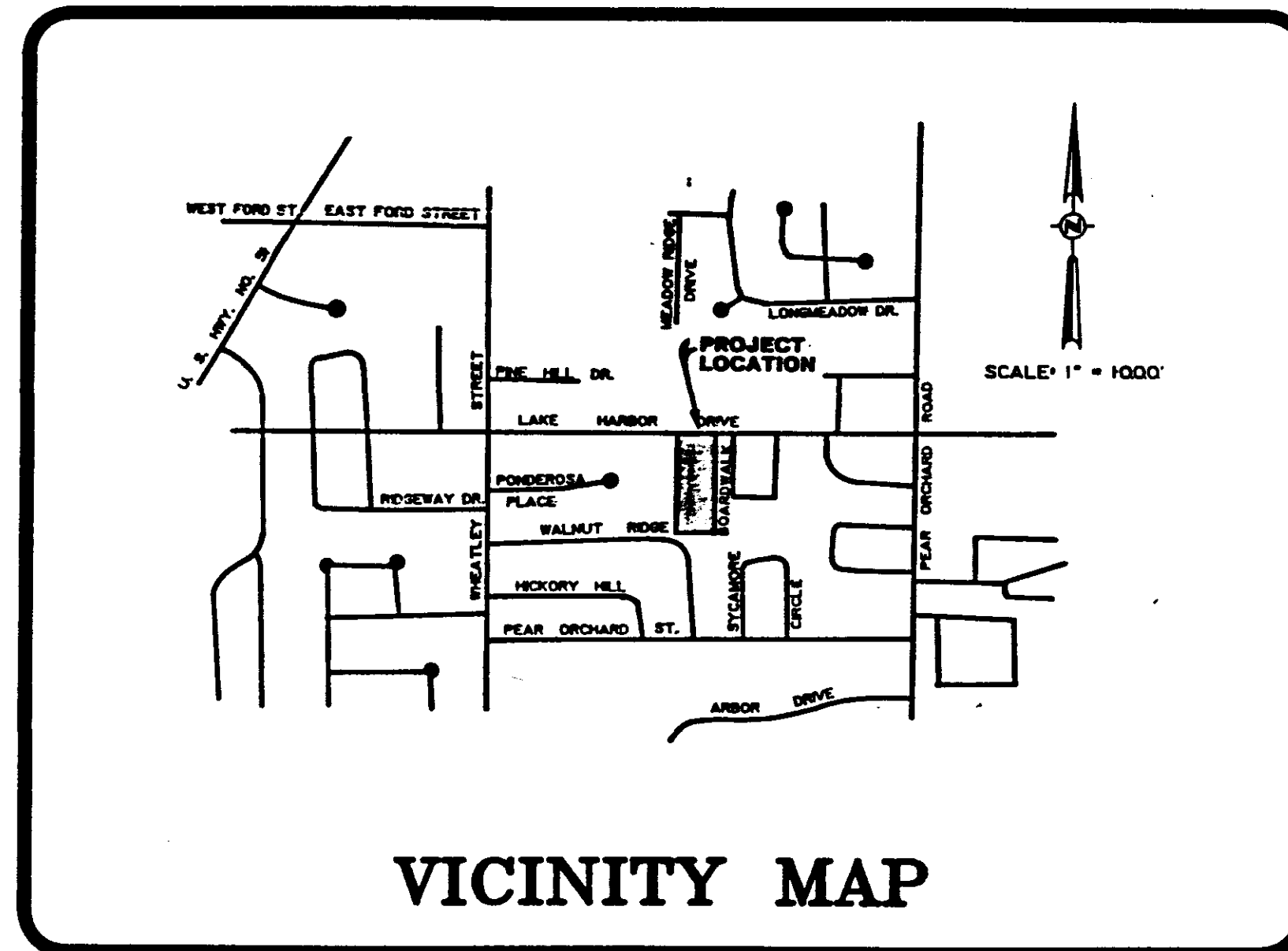


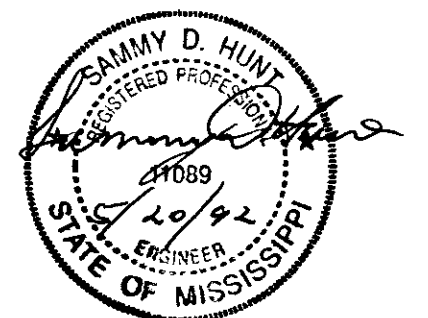
CONSTRUCTION PLANS FOR FRIDAY HARBOUR

DEVELOPED BY:
GOOD EARTH DEVELOPEMENT, INC.
POST OFFICE BOX 328
MADISON, MISSISSIPPI



INDEX TO DRAWINGS	
SHEET NO.	DESCRIPTION
1	COVER SHEET
2	GRADING & DRAINAGE PLAN
3	UTILITY PLAN
4	PLAN-PROFILE FRIDAY HARBOUR
5	STANDARD SANITARY SEWER DETAILS
6	STANDARD WATER DETAILS

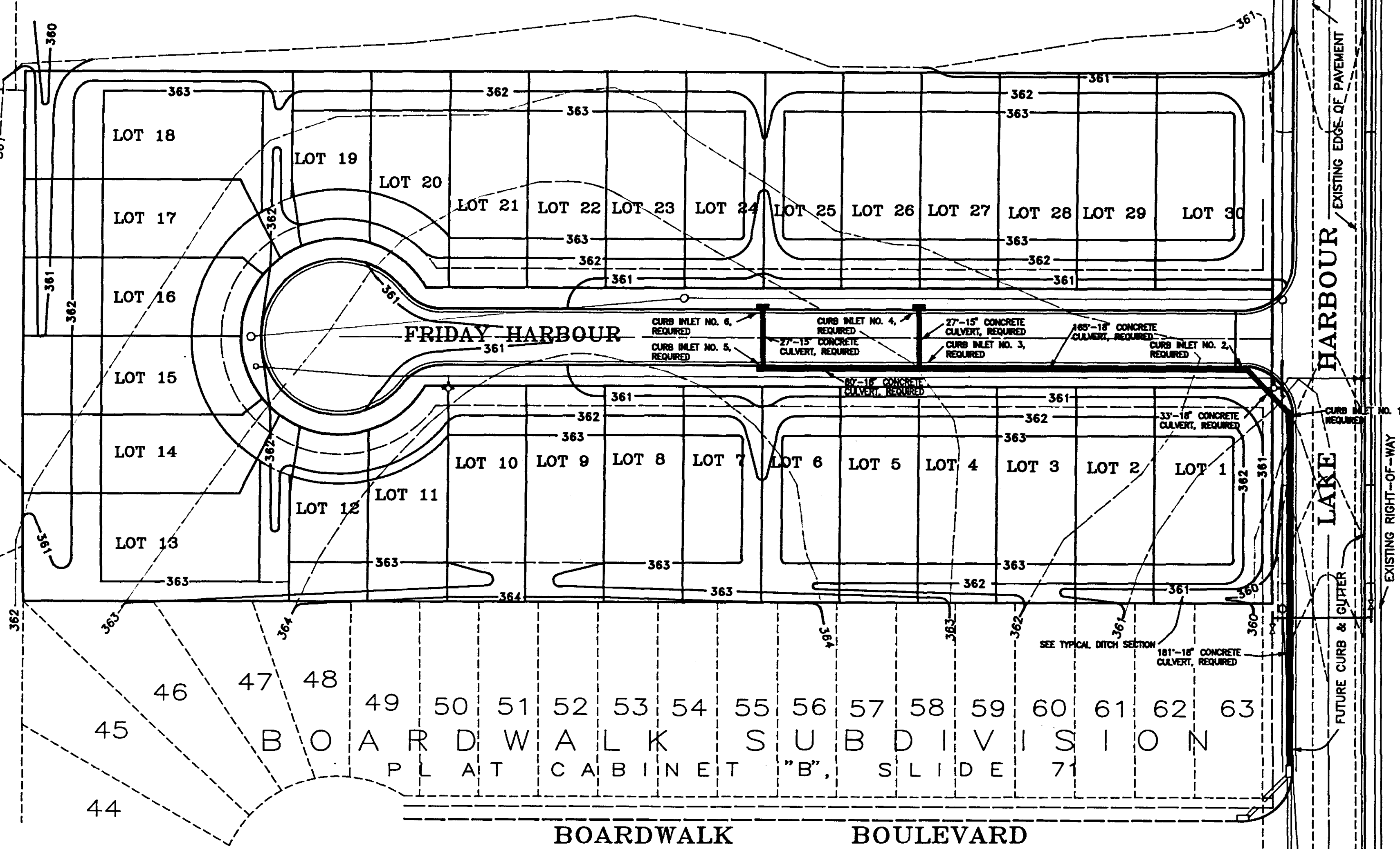
PREPARED BY:
REYNOLDS ENGINEERING, INC.
POST OFFICE BOX 526
JACKSON, MISSISSIPPI 39205
(601) 362-4885



AS BUILT
PJP-00602

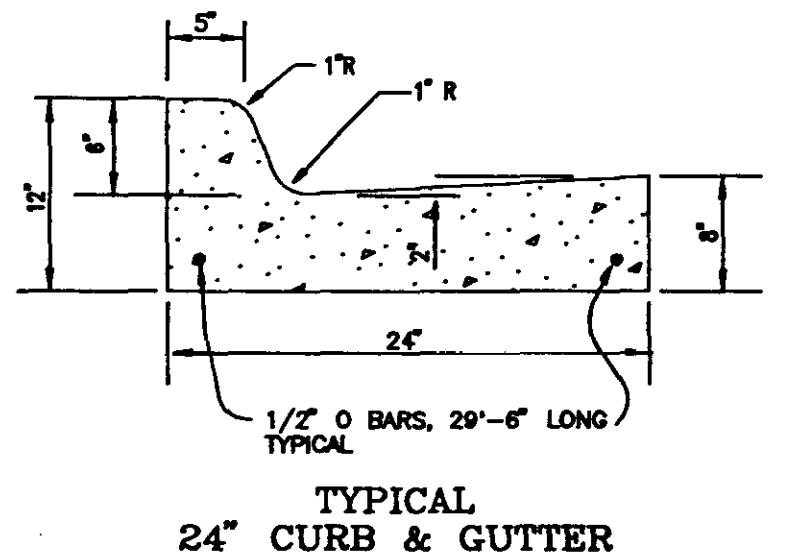
PEAR ORCHARD, PART III
 WALNUT RIDGE
 33
 34
 62
 44
 45
 46
 47
 48
 49
 50
 51
 52
 53
 54
 55
 56
 57
 58
 59
 60
 61
 62
 63

UNDEVELOPED

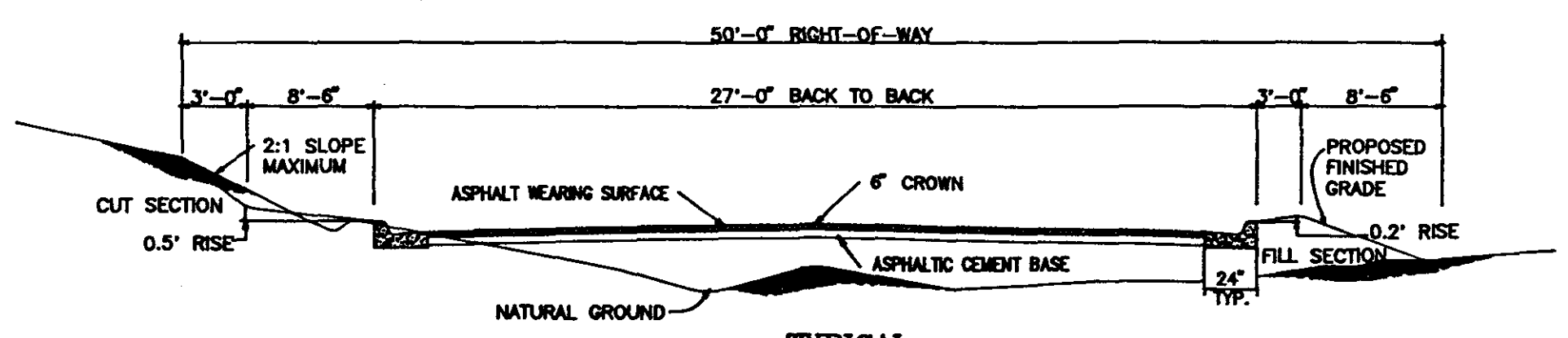


NOTES:

- 1/2" Expansion Joint Req'd @ 30' c.c.
 2-3/4" Dowel Bars, 15" Long Req'd At All Expansion Joints. They Shall Be Held In Place By Approved Chairs Or Supports, & 1/2" Expansion Materials. 1/4" Contraction Joint Req'd @ 10' c.c.
- All Curb And Outlet And Driveway To Be Constructed Of 1:2:4 Mix Concrete.

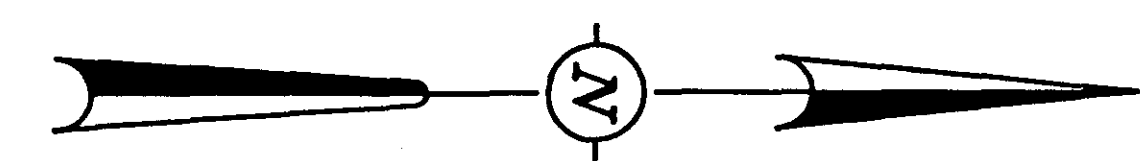


TYPICAL 24" CURB & GUTTER

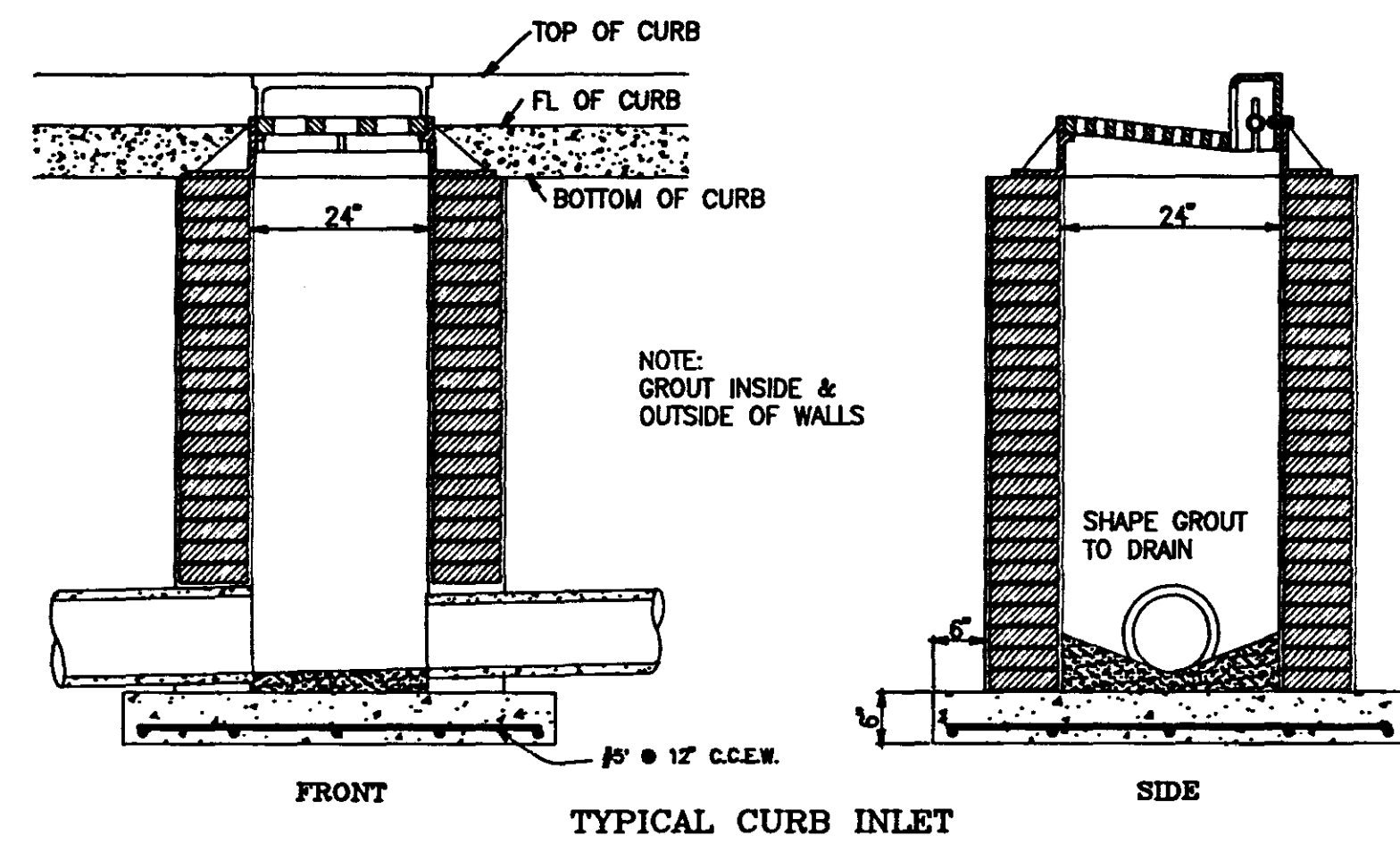
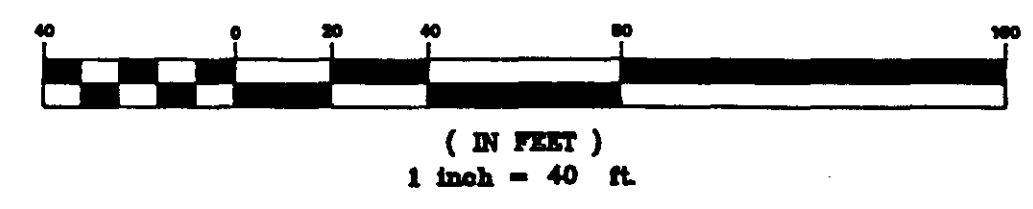


TYPICAL STREET SECTION

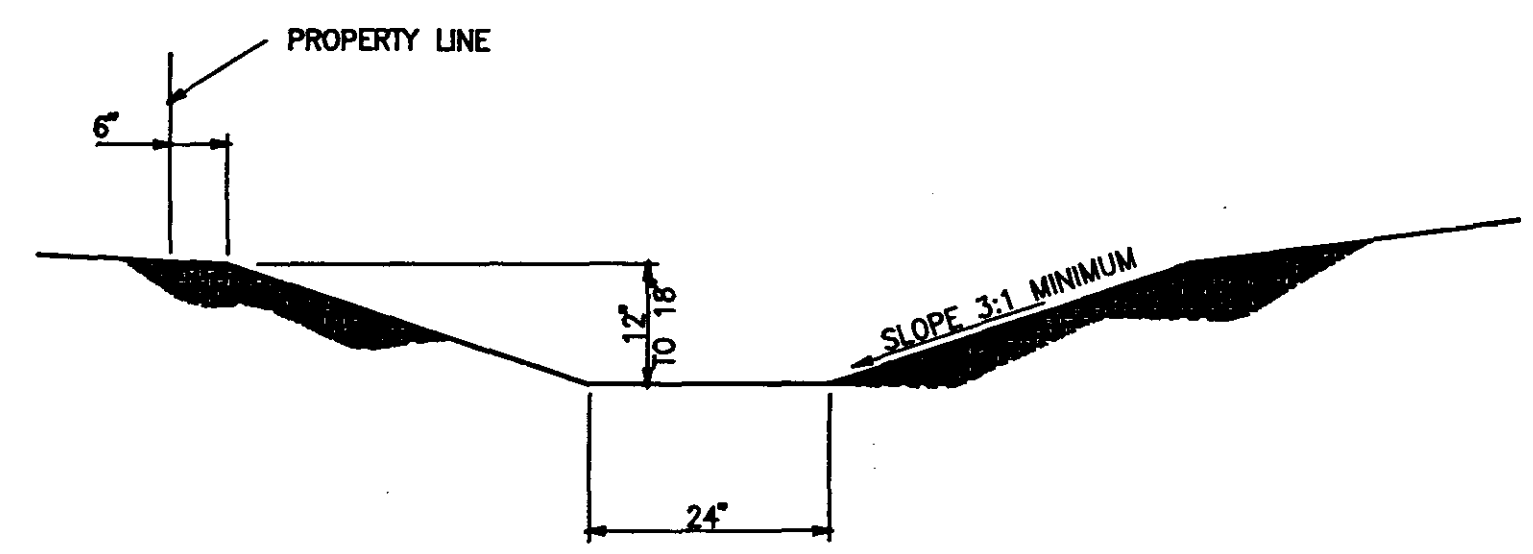
- ALTERNATE NO. 1
 1 1/2" WEARING SURFACE
 5" ASPHALTIC CEMENT BASE
- ALTERNATE NO. 2
 1 1/2" WEARING SURFACE
 3" ASPHALTIC CEMENT BASE
 6" SOIL TREATMENT (LIME)



GRAPHIC SCALE



TYPICAL CURB INLET



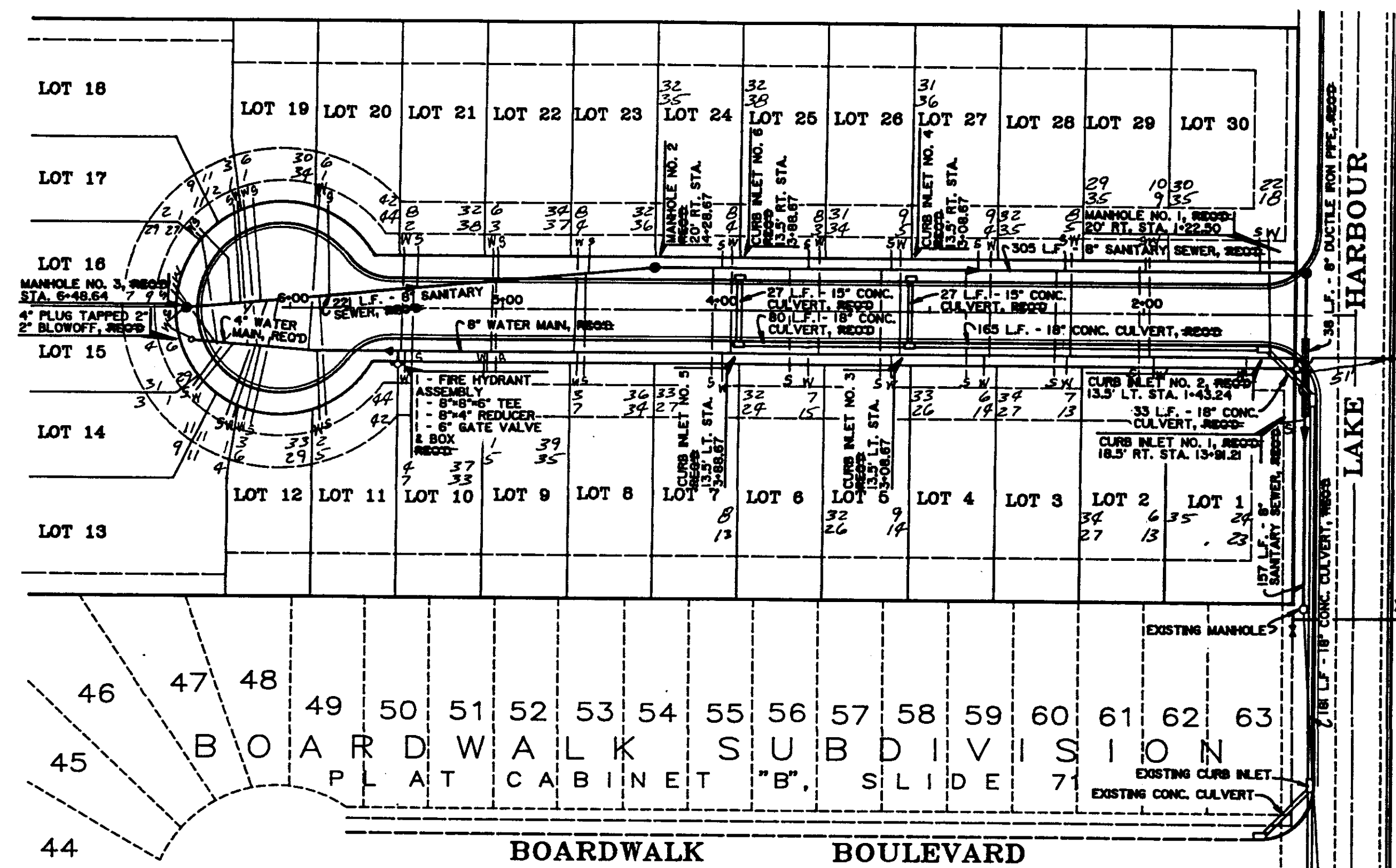
TYPICAL DITCH SECTION

GRADING & DRAINAGE PLAN
 FOR
FRIDAY HARBOR

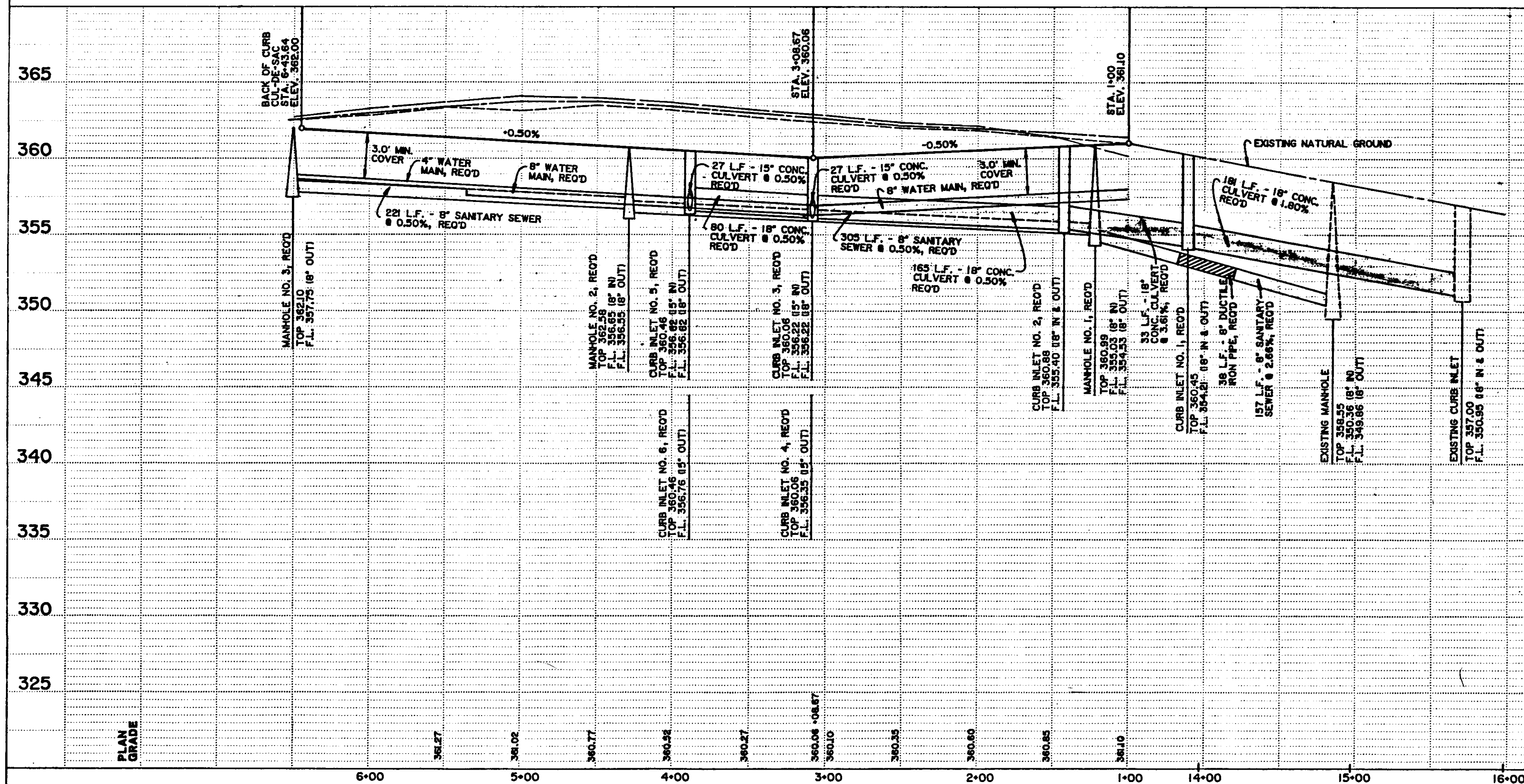
REYNOLDS ENGINEERING, INC.
 POST OFFICE BOX 526
 JACKSON, MISSISSIPPI 39205

DATE: 9-18-1991 SCALE: 1" = 40' DRAWN BY: B.C.B. TITLE NO. 91049-GF JOB NO. 91-049

DATE: _____ BY: _____
 SURVEYED _____ PLOTTED _____
 CHECKED _____ CHECKED _____
 NOTE BOOK NO. _____
 PLAN



DATE: _____ BY: _____
 SURVEYED _____ PLOTTED _____
 CHECKED _____ CHECKED _____
 NOTE BOOK NO. _____
 PROFILE



SCALE: 1" = 20' HORIZ.
 1" = 5' VERT.

LEFT
 RIGHT

1323 HIGHWAY FEDERAL AID SHEET
 PLATE 1-SINGLE PLAN AND PROFILE-FULL DOT
 MELEUNE
 PRINTED IN U.S.A.