

CITY OF RIDGELAND RIDGELAND, MISSISSIPPI GATEWAY SUBDIVISION DRAINAGE IMPROVEMENTS



WAGGONER
ENGINEERING, INC.
ENGINEERS, PLANNERS, SCIENTISTS

825 N. PRESIDENT ST.
JACKSON, MS 39202
601-355-9526
FAX 601-352-3945

CITY OFFICIALS

MAYOR
GENE F. McGEE

MAYOR PRO TEMPORE
GERALD STEEN

BOARD OF ALDERMEN

ANN BRAME HURD, WARD 1
LISA DeCELL WALTERS, WARD 2
CAROLE A. DAVIS, WARD 3
LARRY ROBERTS, WARD 4
SCOTT JONES, WARD 5
LINDA DAVIS TRUNZLER, WARD 6
GERALD STEEN, AT-LARGE

CITY CLERK
DAVID OVERBY

CITY ATTORNEY
JERRY MILLS

DIRECTOR OF PUBLIC WORKS
SAM C. VINSON, P.E.

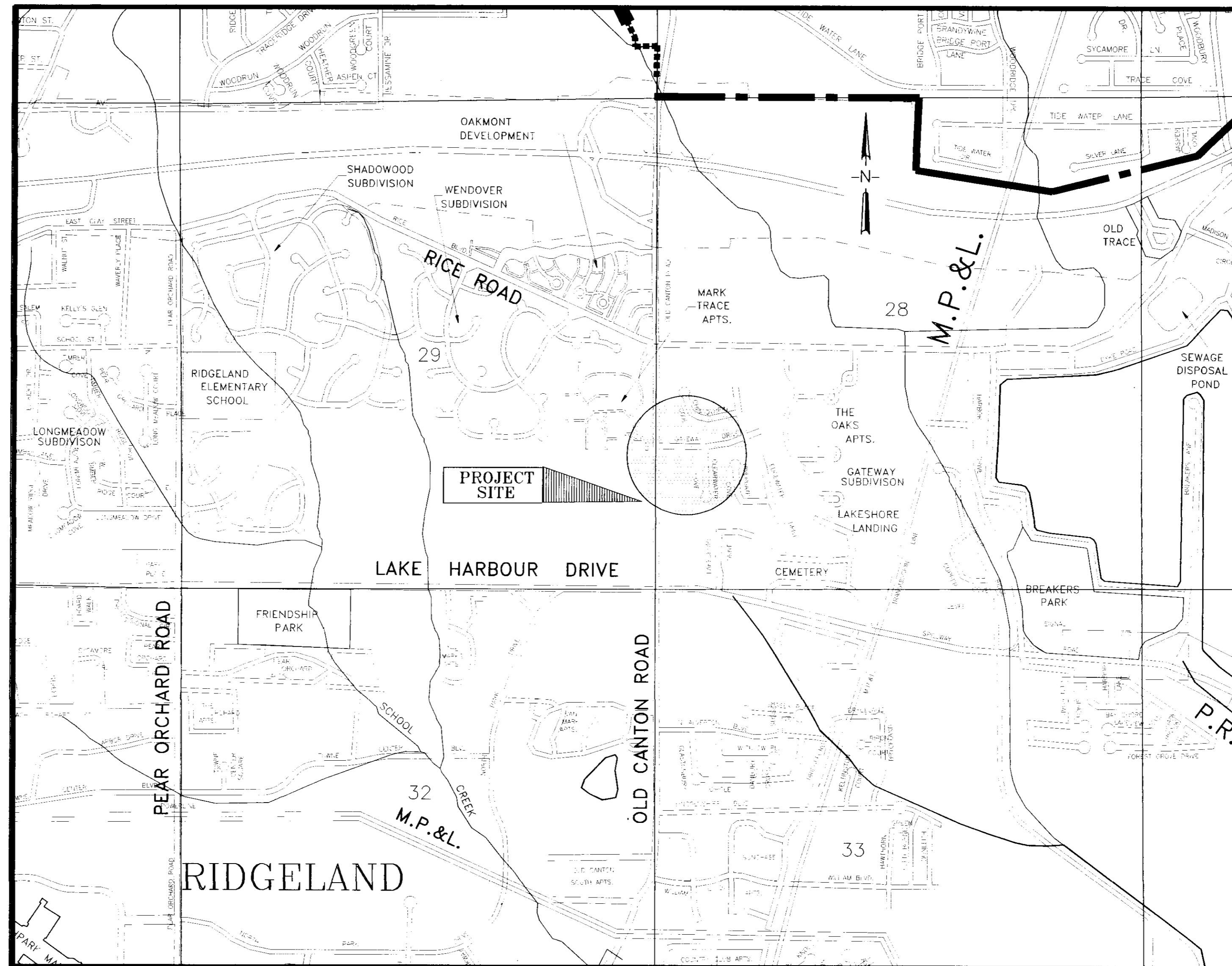
ASST. CITY ENGINEER
DAVID E. WILLIAMS, P.E.

ASST. DIRECTOR OF PUBLIC WORKS
SID HAWTHORNE

PUBLIC WORKS OPERATOR
DANNY WHITEHEAD

FIRE CHIEF
ELMER WAITS

POLICE CHIEF
CHARLES NEWELL



VICINITY MAP

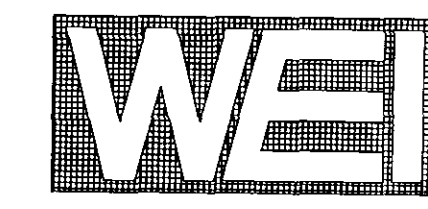
INDEX TO DRAWINGS	
SHEET NO.	TITLE
S1.0	COVER SHEET AND INDEX OF DRAWINGS
S1.1	SITE LAYOUT AND GENERAL NOTES
S1.2 - S1.3	SITE PLAN AND PROFILE SHEETS
CS1.0 - CS1.1	SITE DETENTION CROSS-SECTIONS
D1	DETAIL SHEET
248	HEADWALL DETAIL

FEBRUARY - 2000
WEI C99-052

PWR-00706

Project C99-052

GATEWAY SUBDIVISION DRAINAGE IMPROVEMENTS

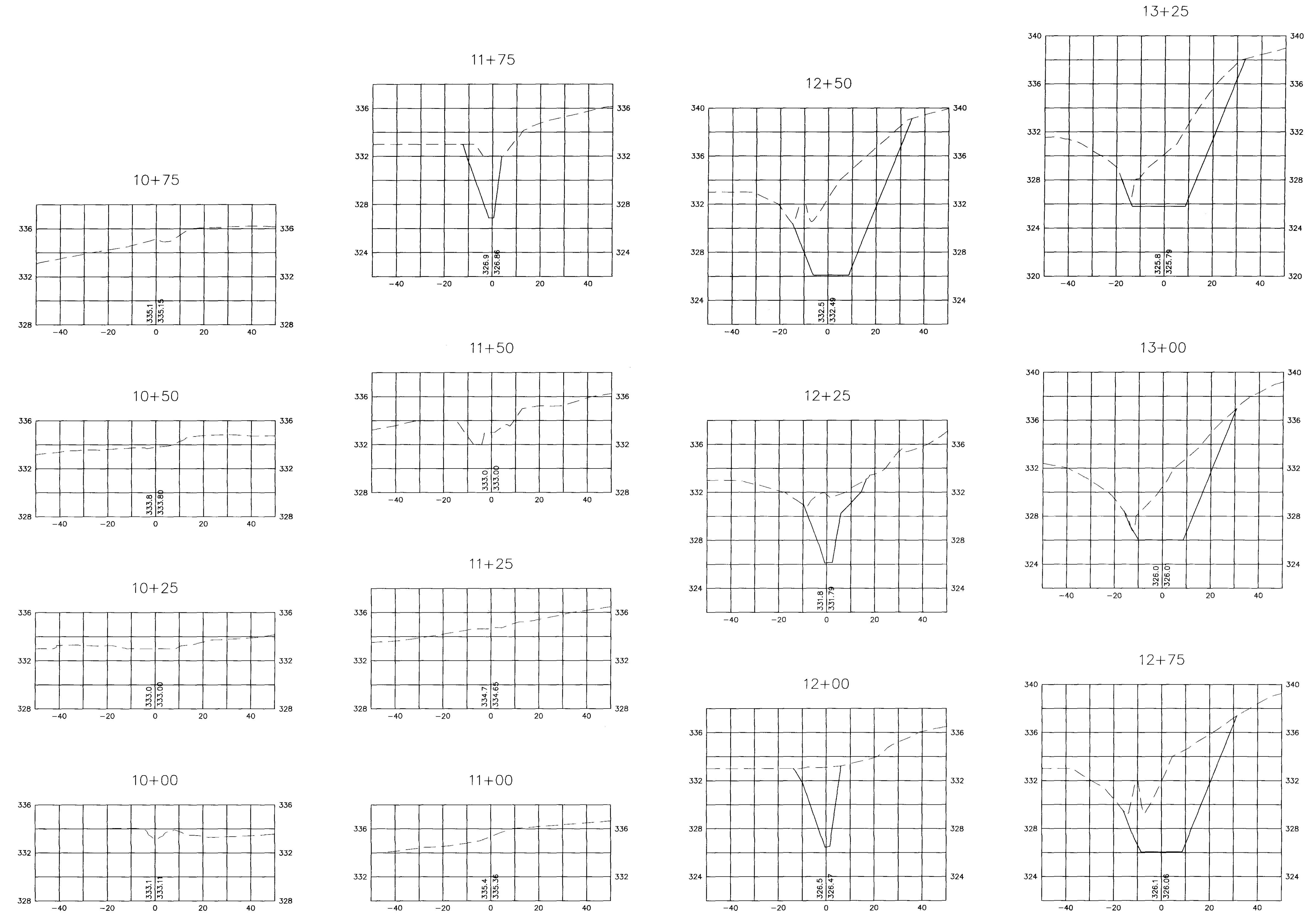


WAGGONER
ENGINEERING, INC.
ENGINEERS, PLANNERS, SCIENTISTS

825 N. PRESIDENT ST.
JACKSON, MS 39202
601-355-8526
FAX 601-352-3945

DRAINAGE IMPROVEMENTS
GATEWAY SUBDIVISION
CITY OF RIDGELAND, MISSISSIPPI

———— Existing Ground
- - - - - Finish Ground

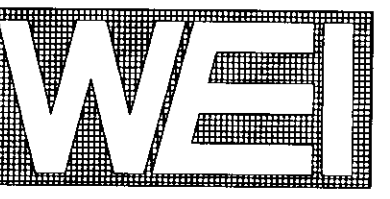


C:\land Projects\GATEWAY\DWG\CROSSSEC.Rev4.dwg Tue Apr 19 16:17:18 2000 W&E CIVIL ENGINEERING / Brandon H. Brown

DRAWING REVISIONS		
NO.	REMARKS	DATE

DRAWN BY: B.H.B. SCALE: SHOWN
DESIGNED BY: B.H.B. DATE: 04-18-00
CHECKED BY: J.H. PROJECT: 09002
PATH: C:\land Projects\GATEWAY\DWG\CROSSSEC.Rev4
DRAWING TITLE:

CROSS SECTION
SHEET NUMBER:
CS 1.0

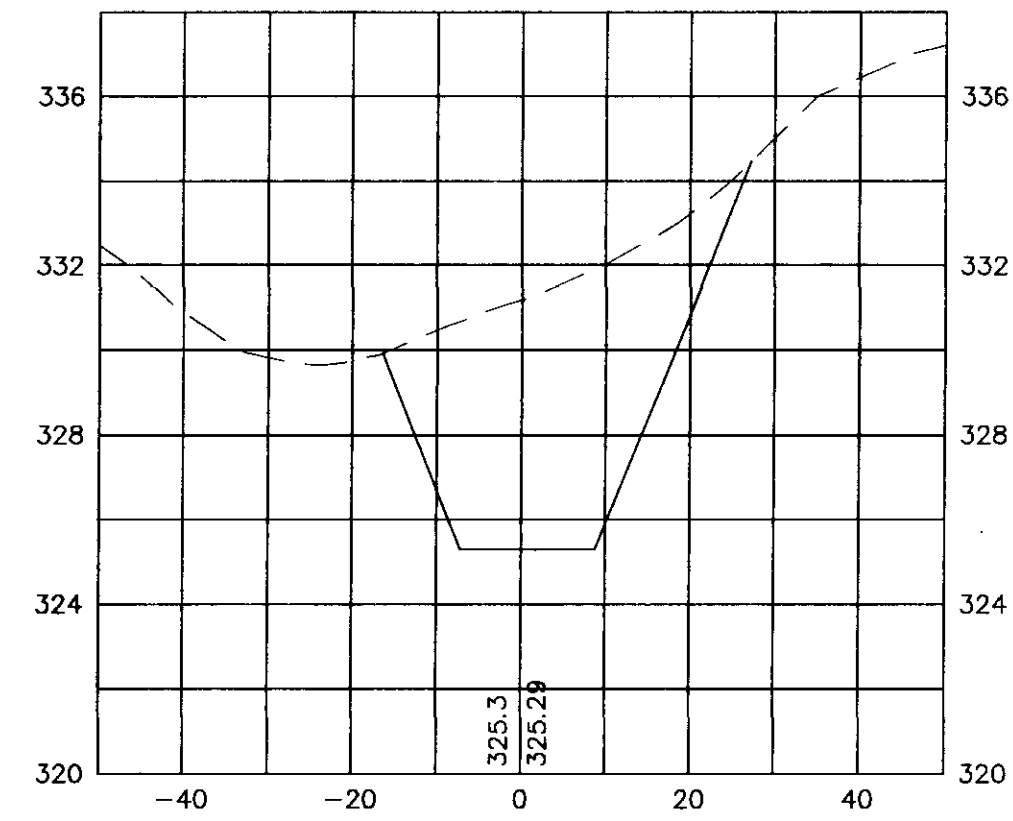


WAGGONER
ENGINEERING, INC.
ENGINEERS, PLANNERS, SCIENTISTS

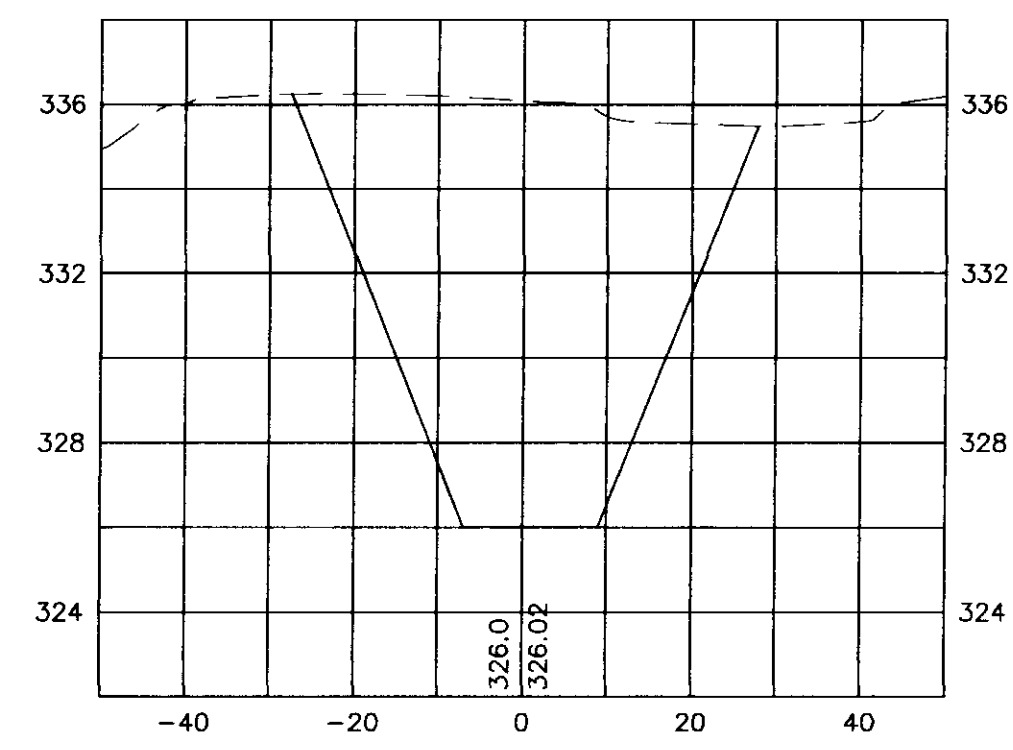
825 N. PRESIDENT ST.
JACKSON, MS 39202
601-355-9526
FAX 601-352-3945

———— Existing Ground
----- Finish Ground

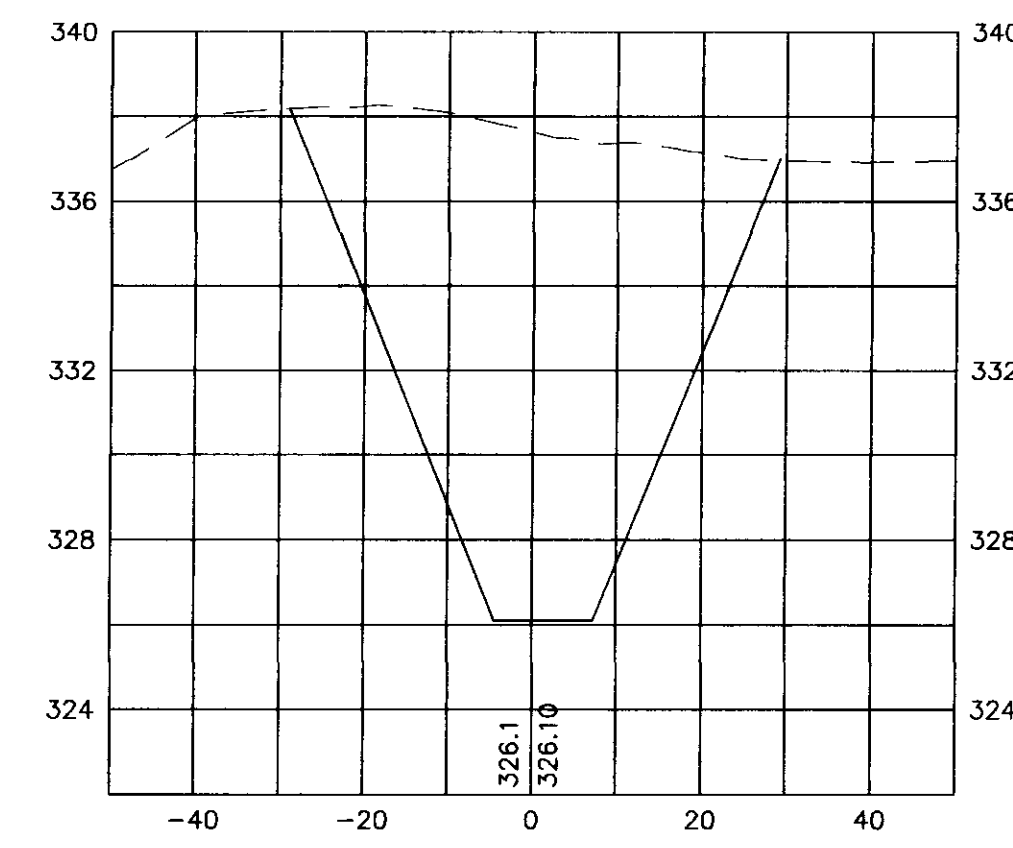
14+00



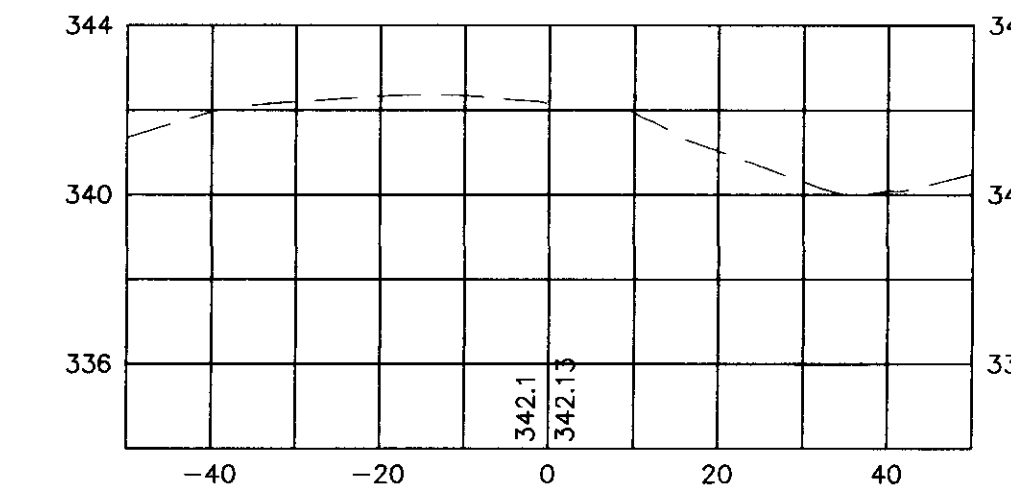
14+75



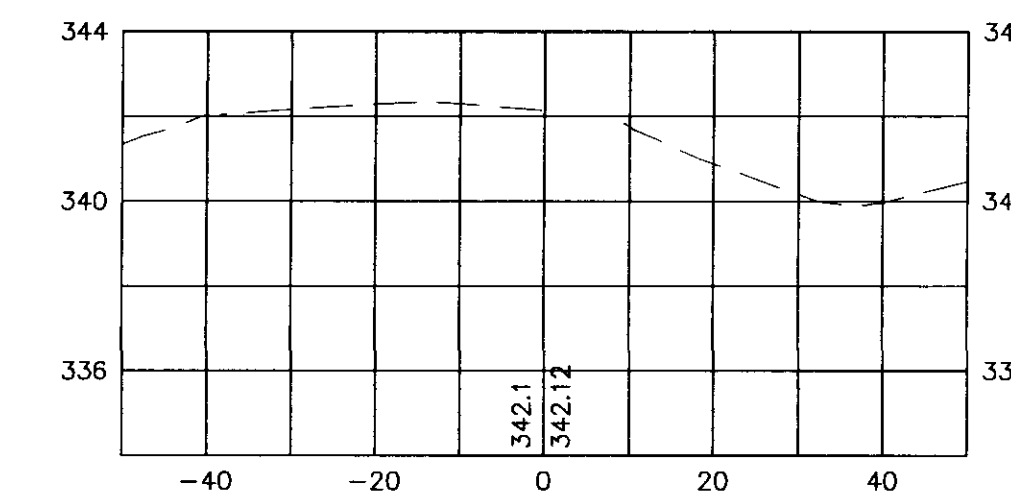
15+50



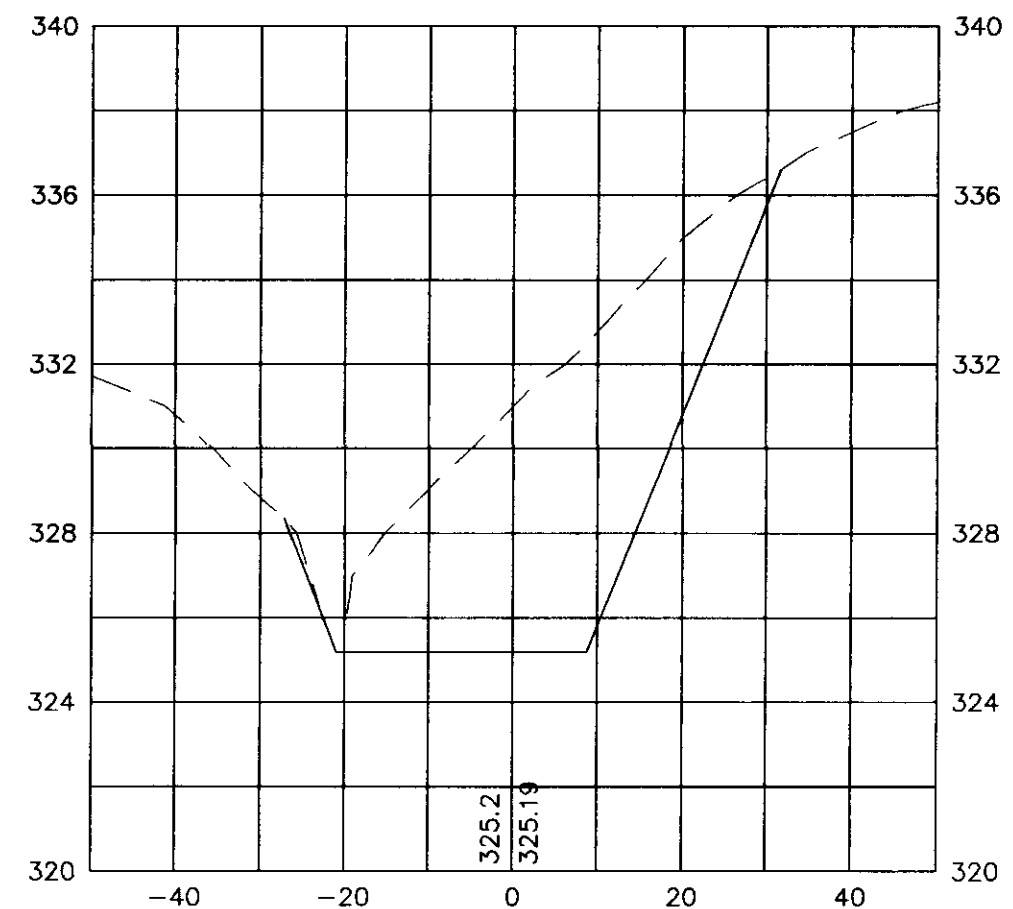
16+27.58



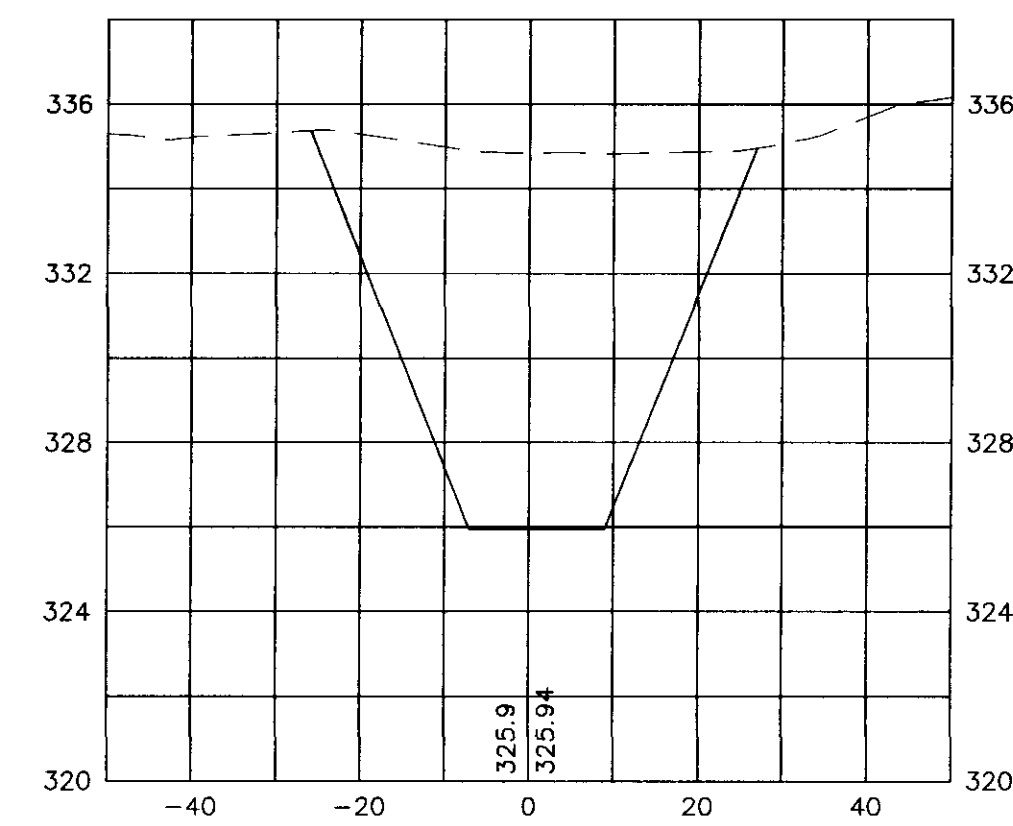
16+25



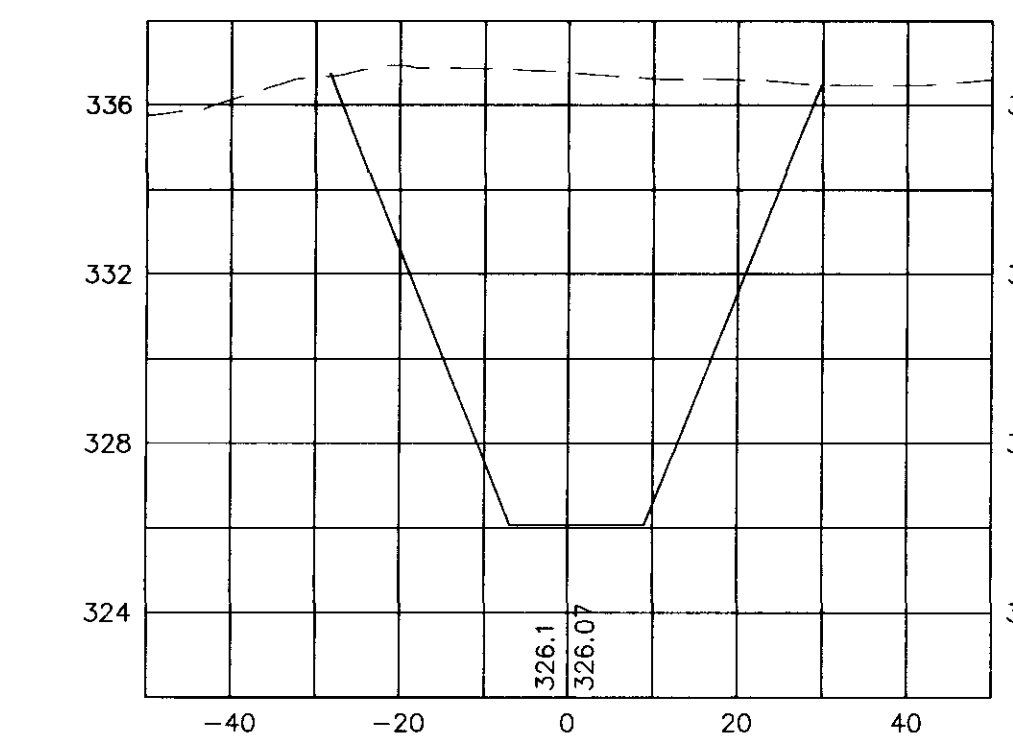
13+75



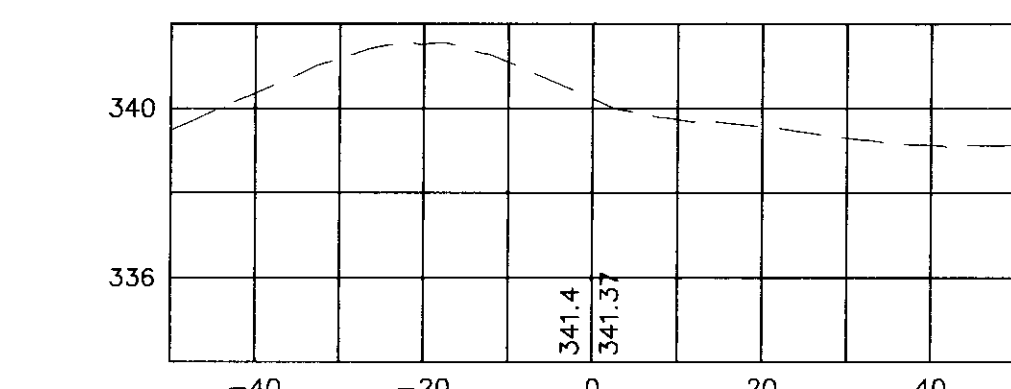
14+50



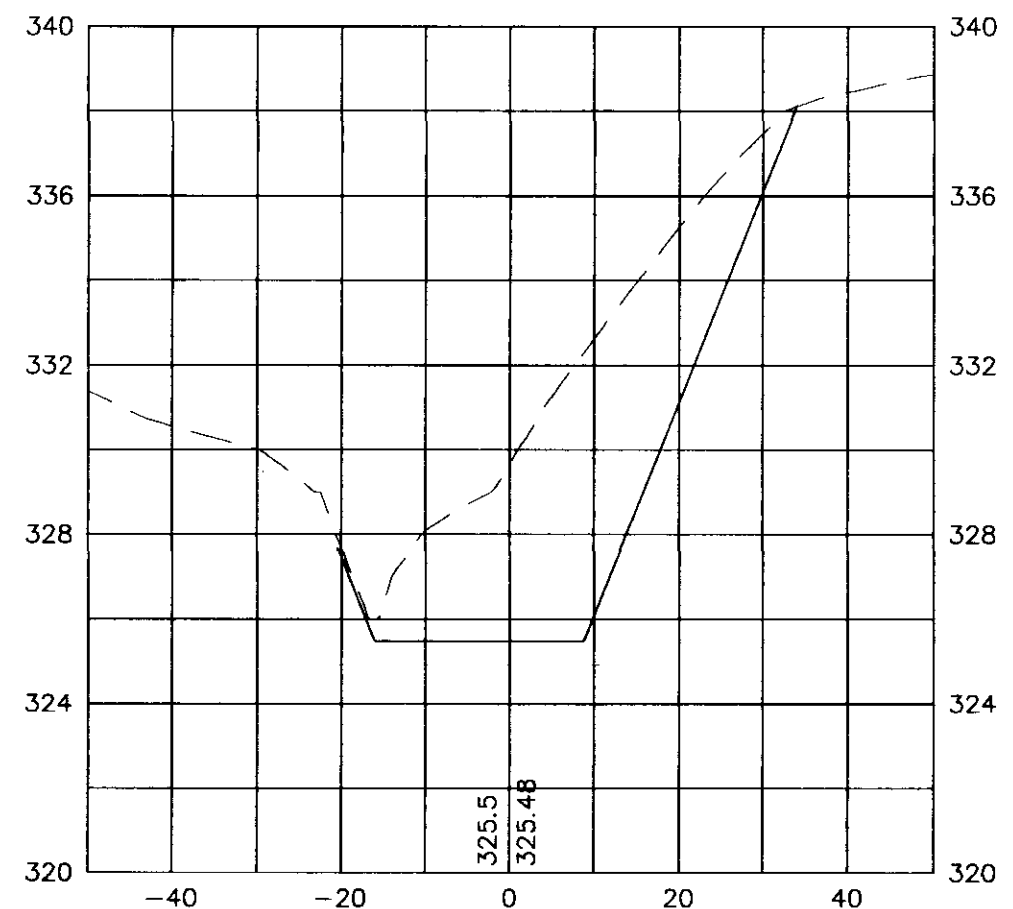
15+25



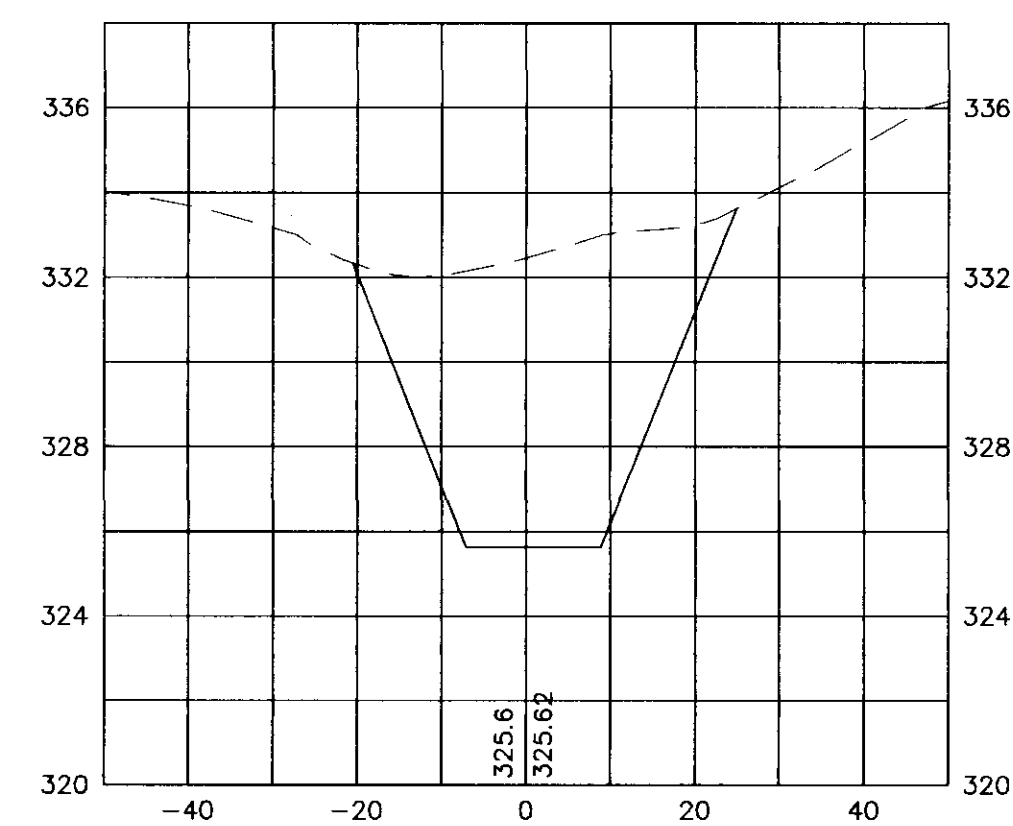
16+00



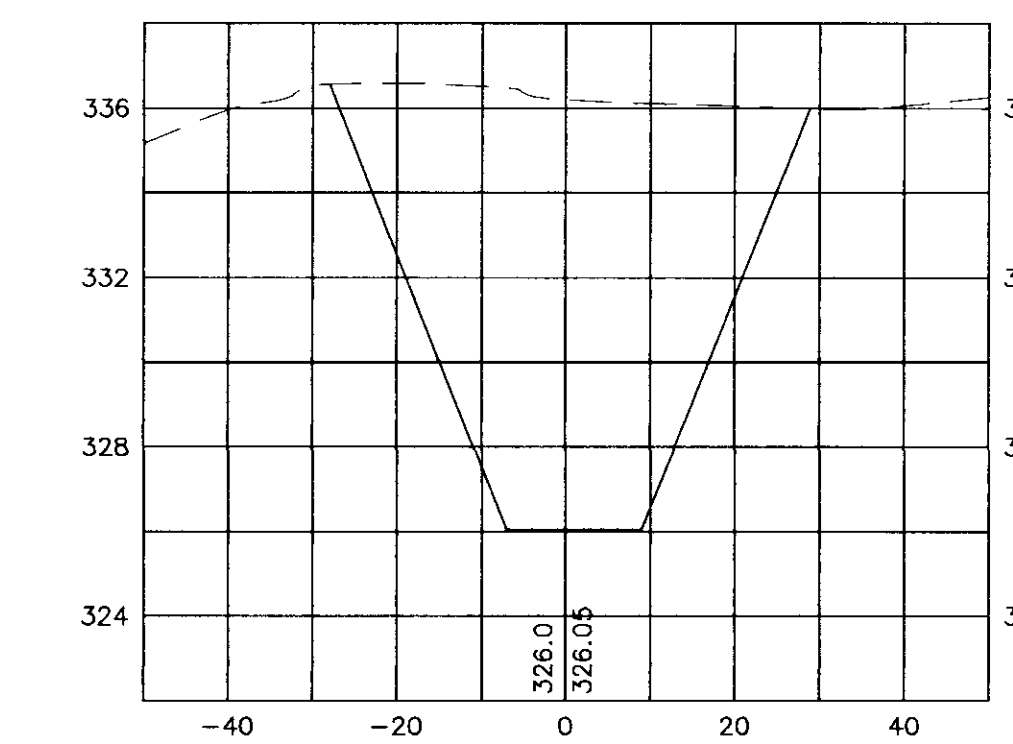
13+50



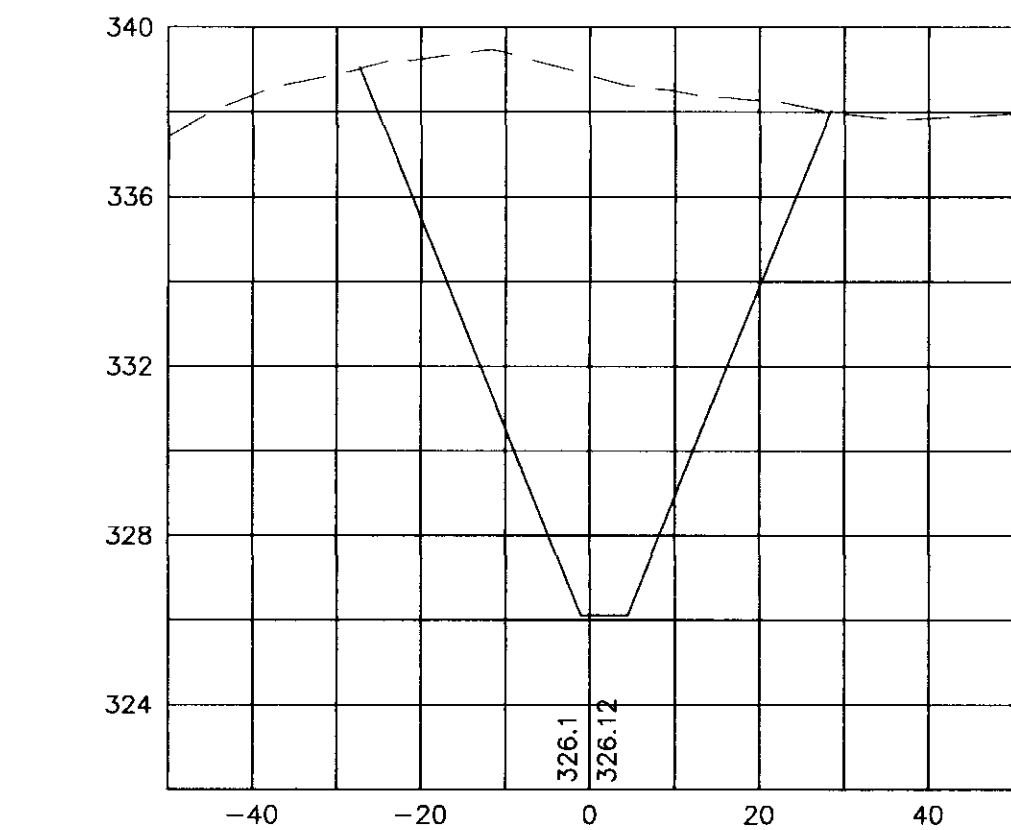
14+25



15+00



15+75



C:\land Projects\GATEWAY\DWG\CROSSSEC_Rev.dwg Tue Apr 18 16:17:01 2000 WEI CIVIL ENGINEERING / Brandon H. Brown

*DRAINAGE IMPROVEMENTS
GATEWAY DRIVE SUBDIVISION
CITY OF RIDGELAND, MISSISSIPPI*

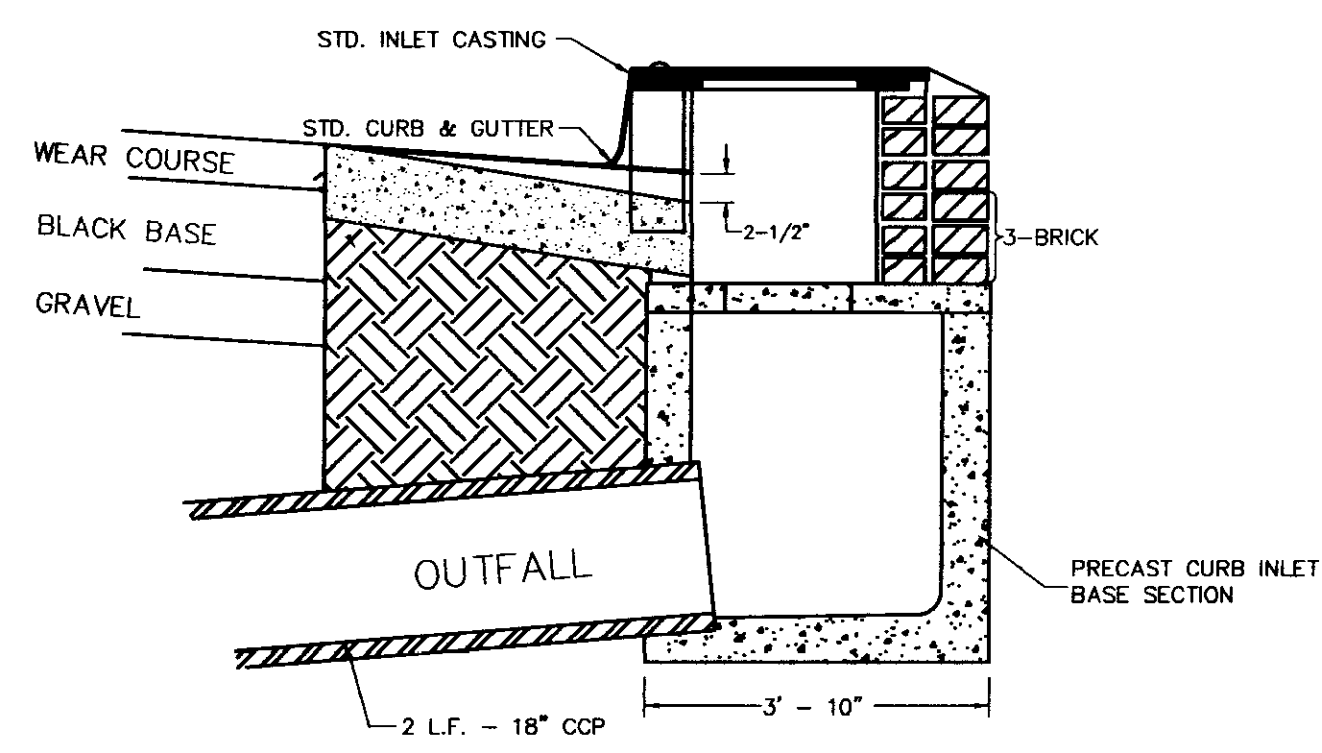
DRAWING REVISIONS

NO.	REMARKS	DATE

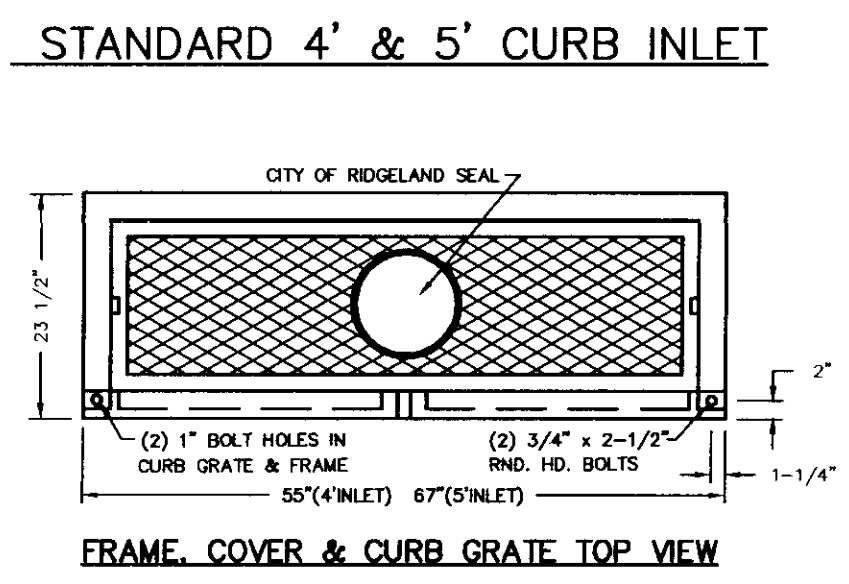
DRAWN BY: B.H.B. SCALE: SHOWN
DESIGNED BY: B.H.B. DATE: 04-18-00
CHECKED BY: J.H.L. PROJECT: C99052
PLOT FILE: P:\C99052\GATEWAY\DWG\CROSSSEC_rev.dwg

CROSS SECTION

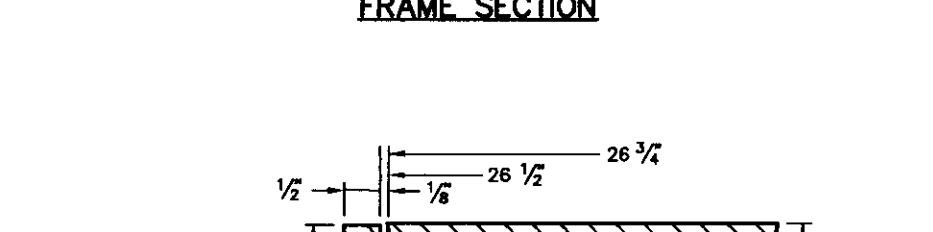
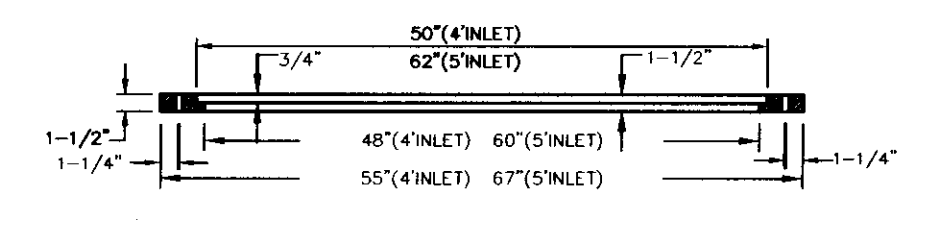
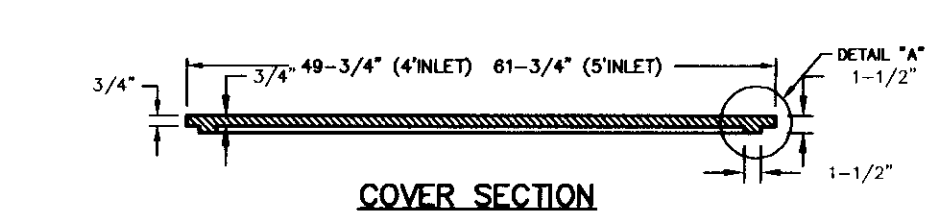
PLOT NUMBER
CS 1.1



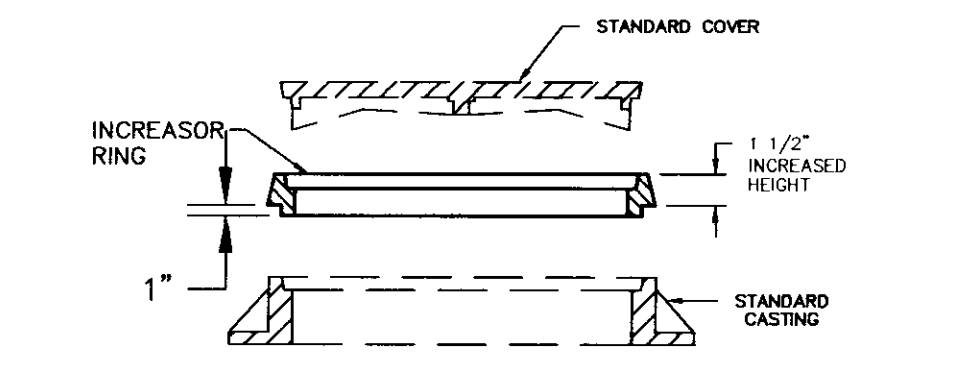
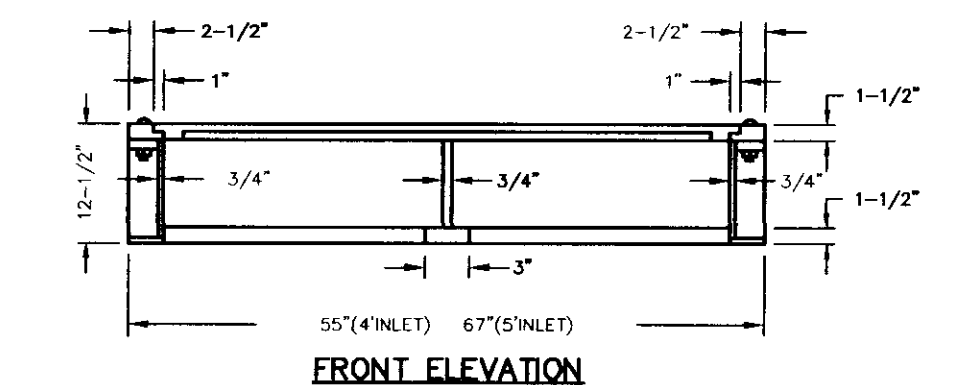
SECTION OF STANDARD CURB INLET



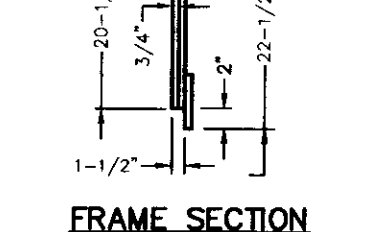
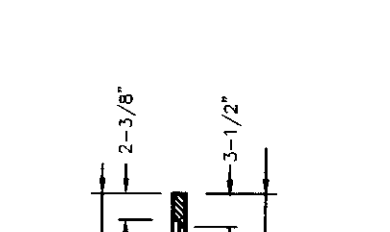
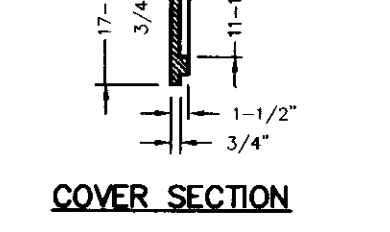
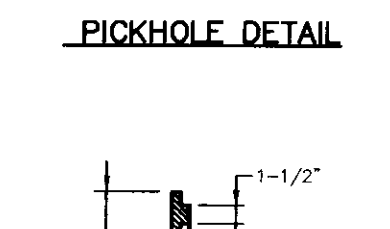
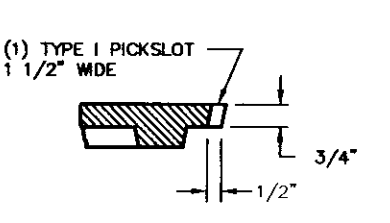
TOP PLAN OF COVER



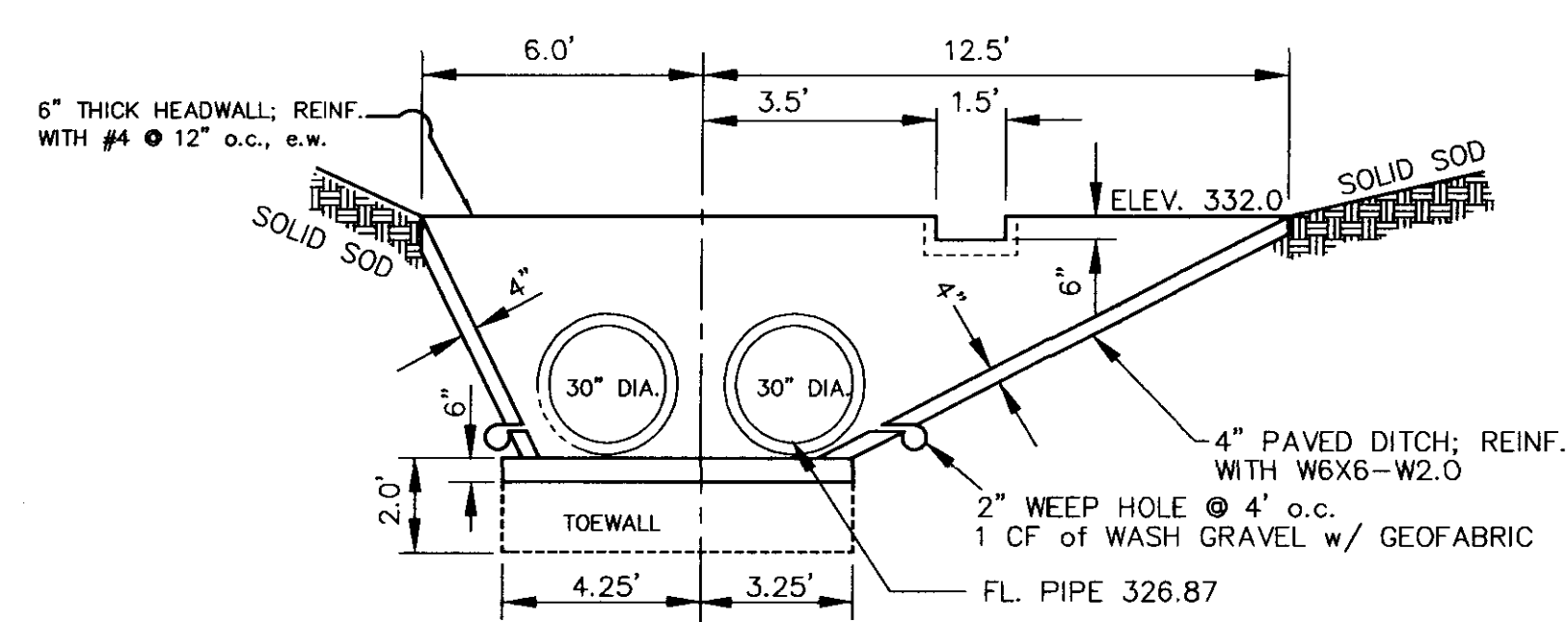
DETAIL "E"



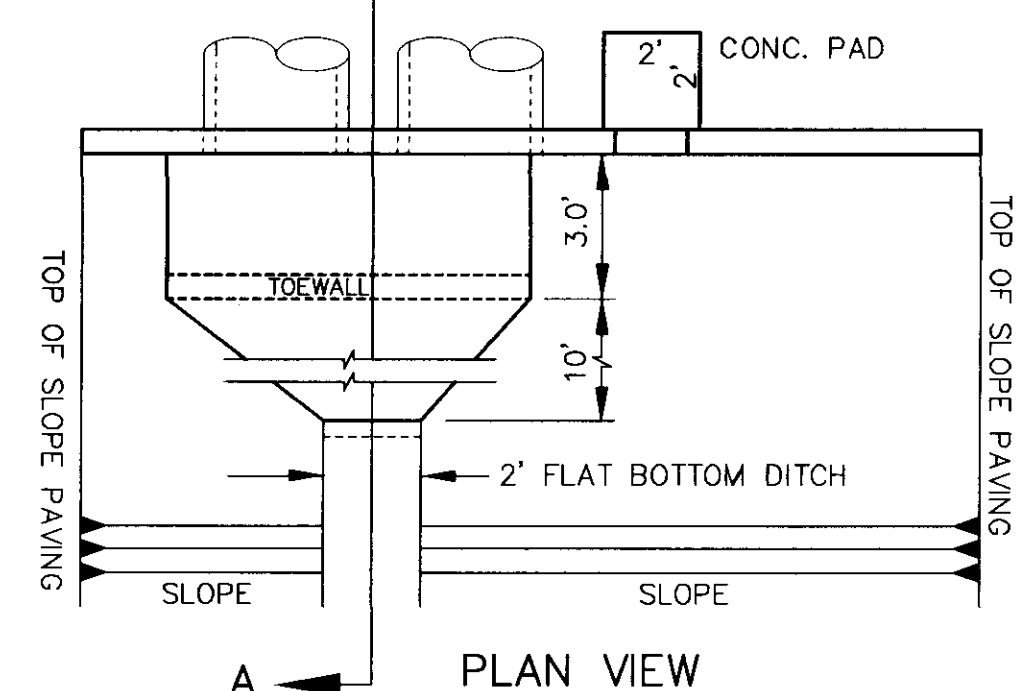
MANHOLE INCREASOR RING



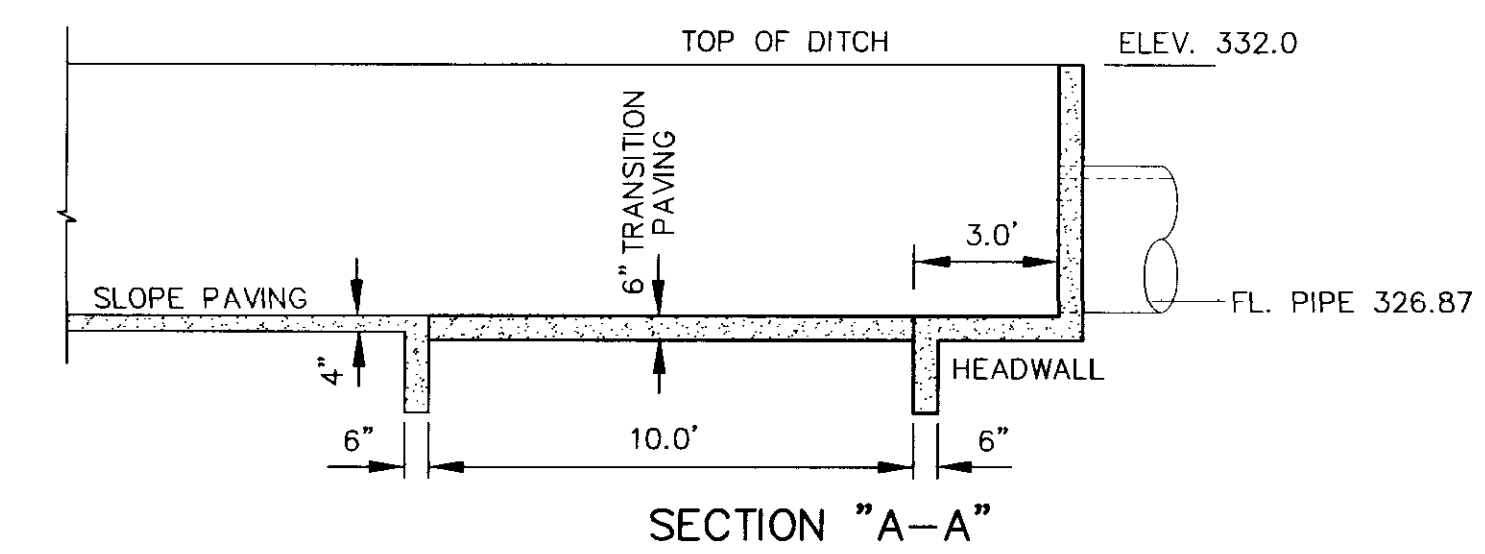
NOTE: ALL CASTINGS TO BE CONSTRUCTED OF A GOOD QUALITY GRAY IRON ACCORDING TO SPECIFICATIONS.



ELEVATION

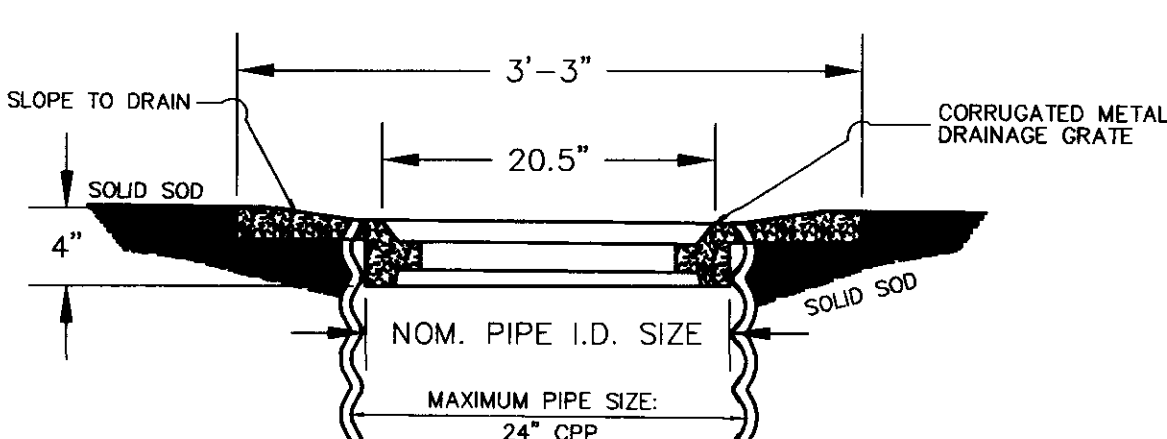


PLAN VIEW



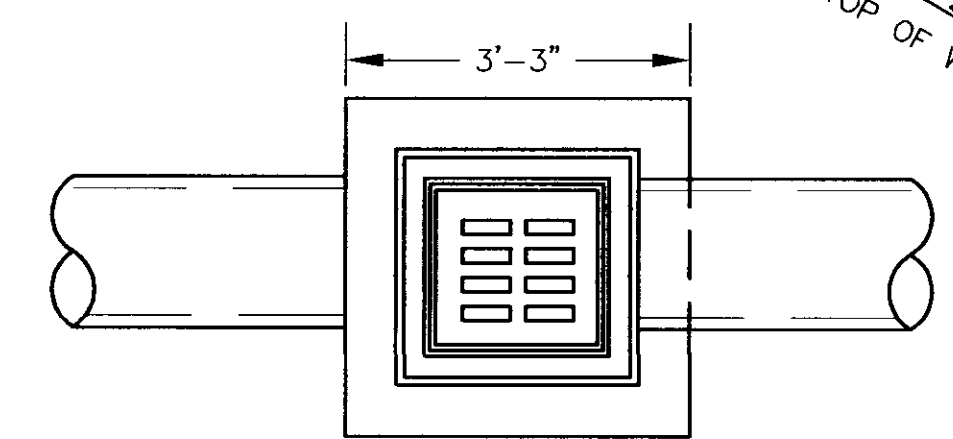
SECTION "A-A"

CONCRETE HEADWALL DETAIL
NOT TO SCALE



SECTION

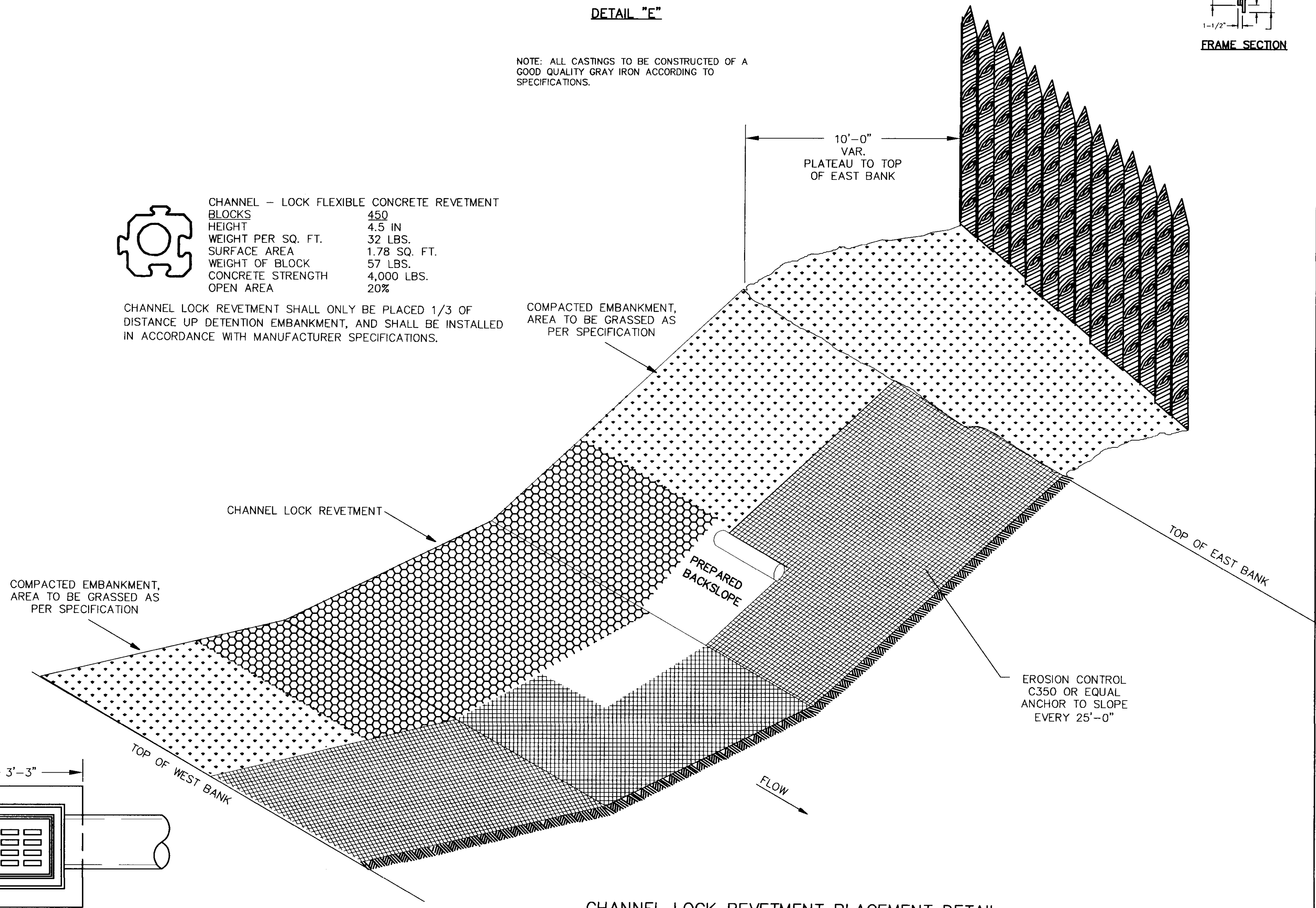
GRATE INLET DETAIL
NOT TO SCALE



PLAN

- CHANNEL - LOCK FLEXIBLE CONCRETE REVETMENT BLOCKS
- BLOCKS 450
- HEIGHT 4.5 IN.
- WEIGHT PER SQ. FT. 32 LBS.
- SURFACE AREA 1.78 SQ. FT.
- WEIGHT OF BLOCK 57 LBS.
- CONCRETE STRENGTH 4,000 LBS.
- OPEN AREA 20%

CHANNEL LOCK REVETMENT SHALL ONLY BE PLACED 1/3 OF DISTANCE UP DETENTION EMBANKMENT, AND SHALL BE INSTALLED IN ACCORDANCE WITH MANUFACTURER SPECIFICATIONS.



CHANNEL LOCK REVETMENT PLACEMENT DETAIL
NOT TO SCALE

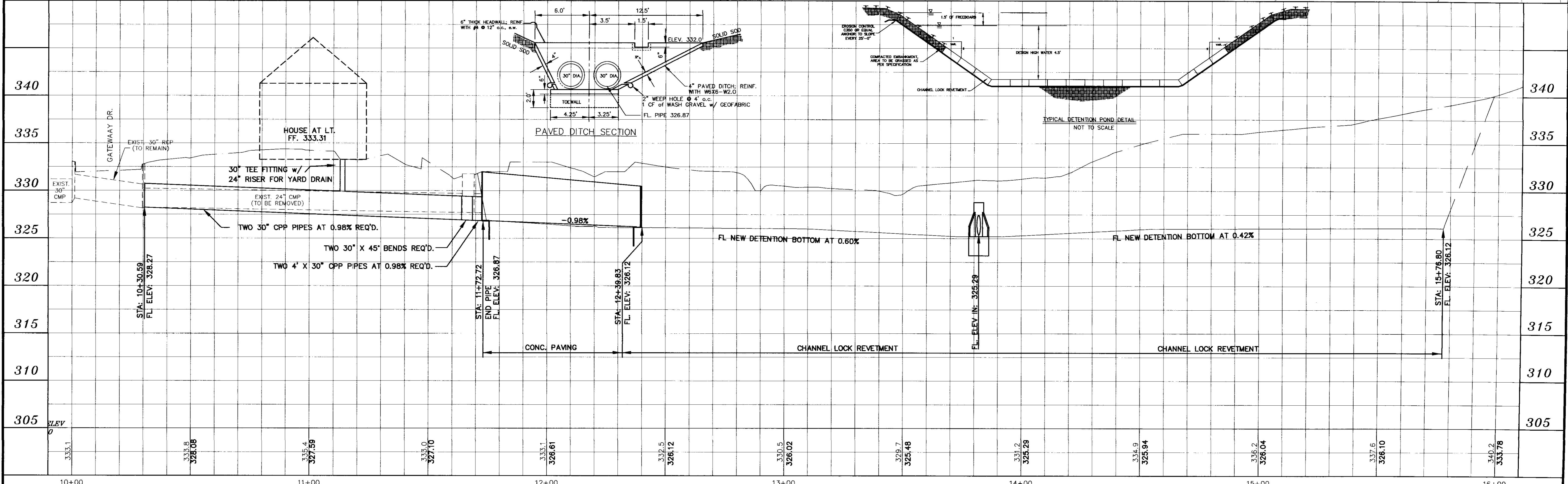
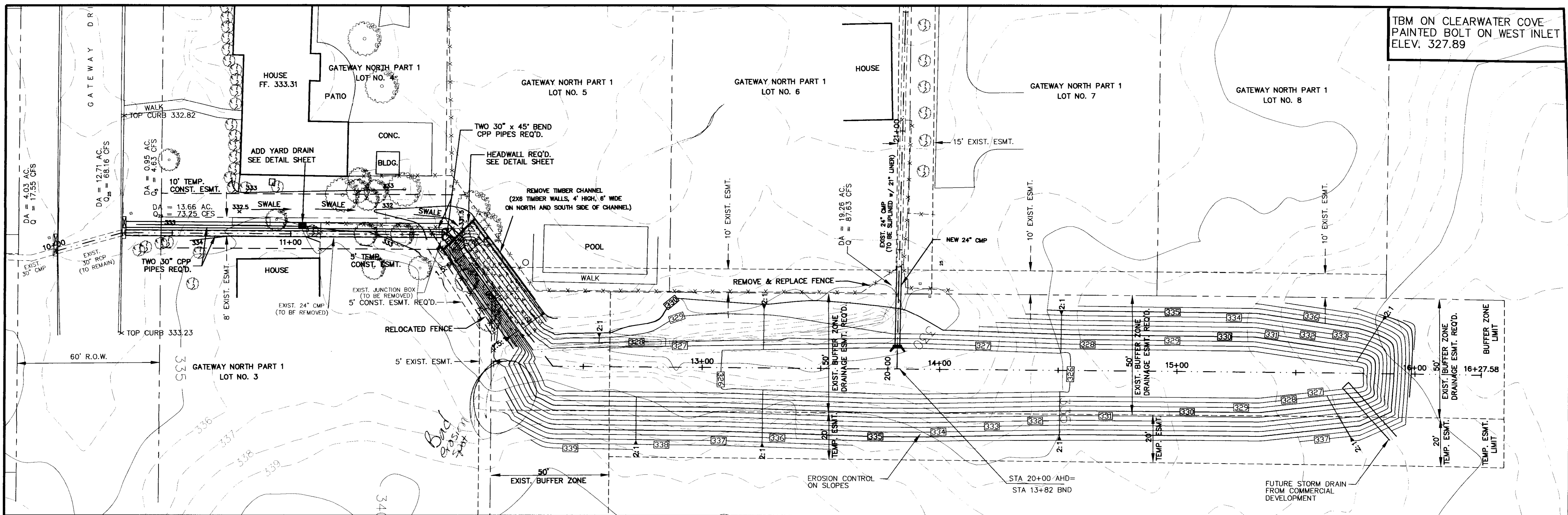
C:\Land Projects\GATEWAY\dwg\gateway99_rev4.dwg Tue Apr 19 14:13:11 2000 WET CIVIL ENGINEERING / Brandon H. Brown

DRAWING REVISIONS		
NO.	REMARKS	DATE

DRAWN BY: B.H.B.	SCALE: 1" = 20'
DESIGNED BY: B.H.B.	DATE: 11-15-99
CHECKED BY: C.W.	PROJECT: C94002
FILED BY: C:\99002\GATEWAY\DWG\gateway99_rev1.dwg	

DETAIL
SHEET NUMBER:
D1

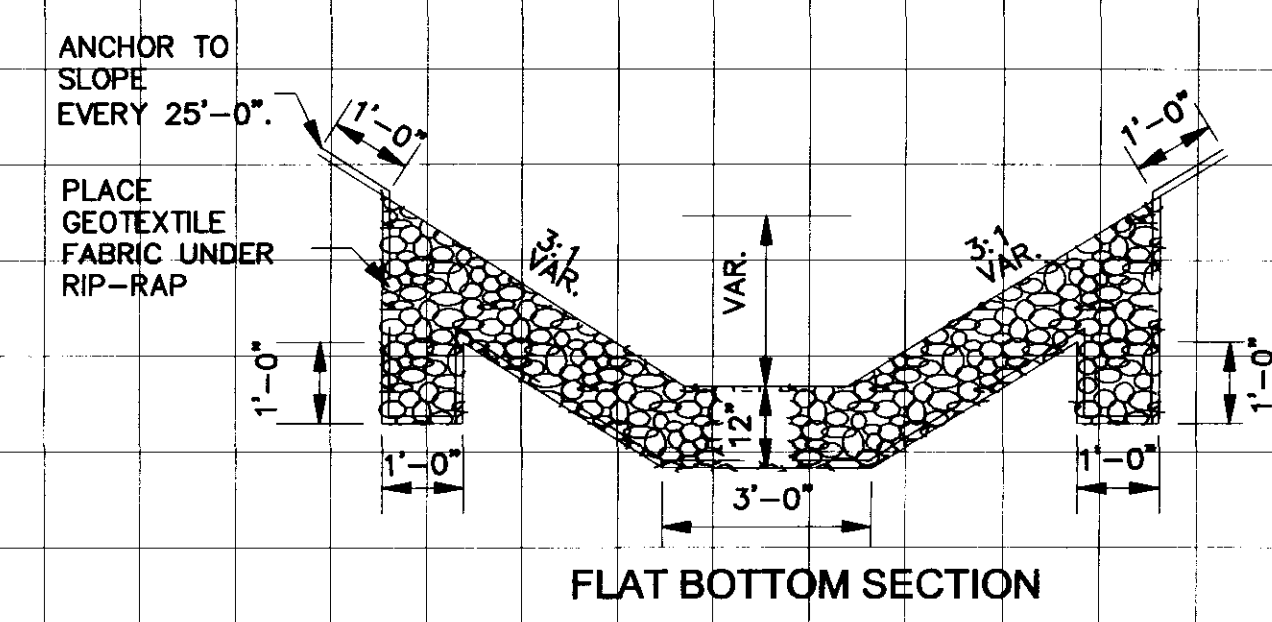
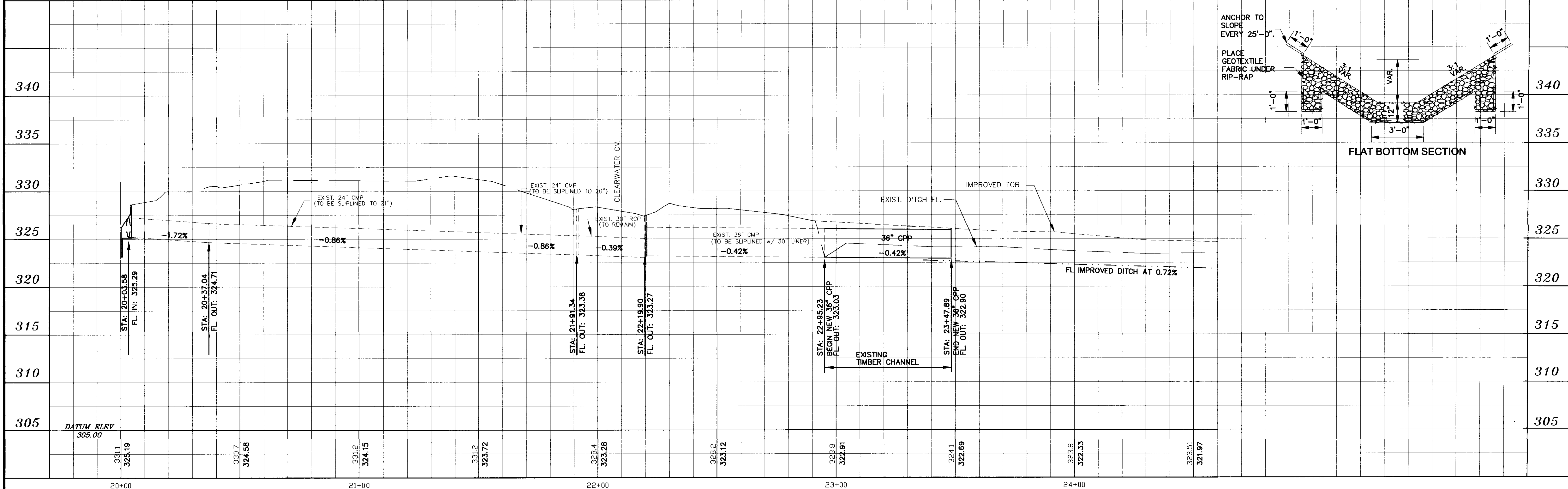
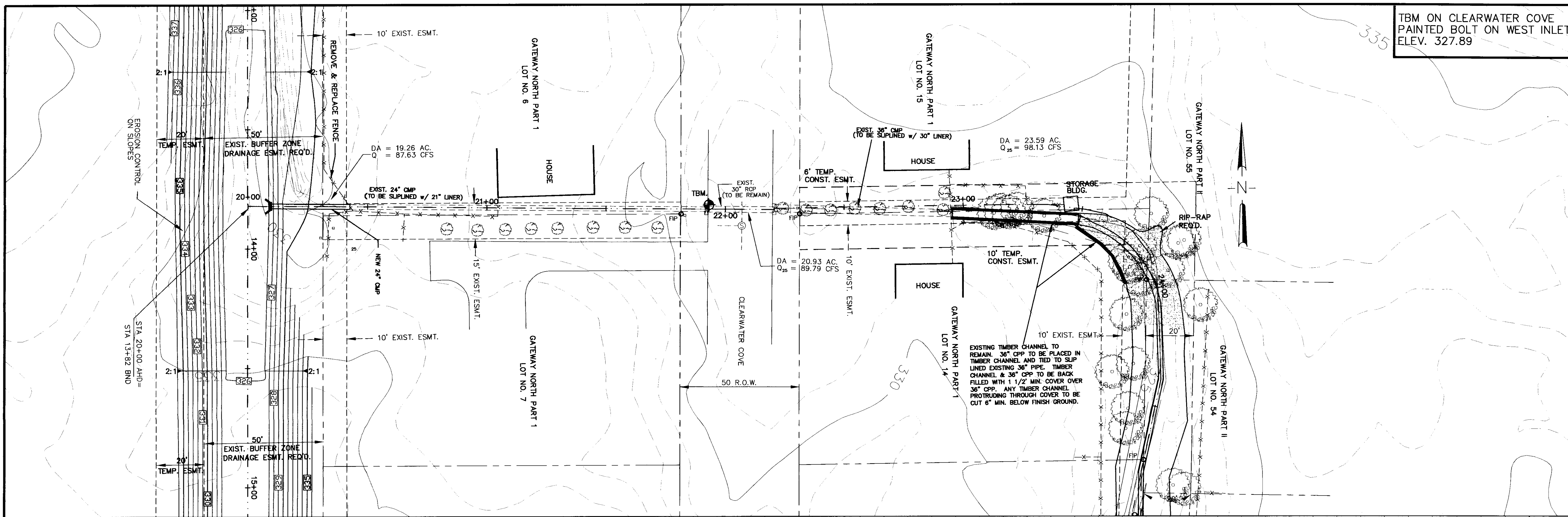
TBM ON CLEARWATER COVE
PAINTED BOLT ON WEST INLET
ELEV. 327.89



NO.	DATE	REVISIONS	DESIGNED C.W. & B.H.B.	DATE 11-15-99	WAGGONER ENGINEERING INC. CONSULTING ENGINEERS JACKSON, MISSISSIPPI	ACAD PATH ROUTE P:\C99052\GATEWAY\GATEWAY99_REV4	W.E.I. JOB NO. C99-052	SHEET NO. 51.2
			DRAWN J.W.P. & B.H.B.	SCALE 1" = 20' HORIZ. 1" = 5' VERT.				

C:\Land Projects\GATEWAY\DWG\gateway99_rev4.dwg Tue Apr 18 13:39:01 2000 KEI CIVIL ENGINEERING / Brandon H. Brown

TBM ON CLEARWATER COVE
PAINTED BOLT ON WEST INLET
ELEV. 327.89



C:\land Projects\GATEWAY\dwg\CROSSSEC_Bev4.dwg Tue Apr 18 14:25:45 2000 MEI CIVIL ENGINEERING / Brandon H. Brown

DESIGNED C.W. & B.H.B.	DATE 12-08-99	WAGGONER ENGINEERING INC. CONSULTING ENGINEERS JACKSON, MISSISSIPPI	ACAD PATH ROUTE P:\C99052\GATEWAY
DRAWN J.W.P. & B.H.B.	SCALE 1" = 20' HORIZ 1" = 5' VERT.		
NO. DATE REVISIONS			