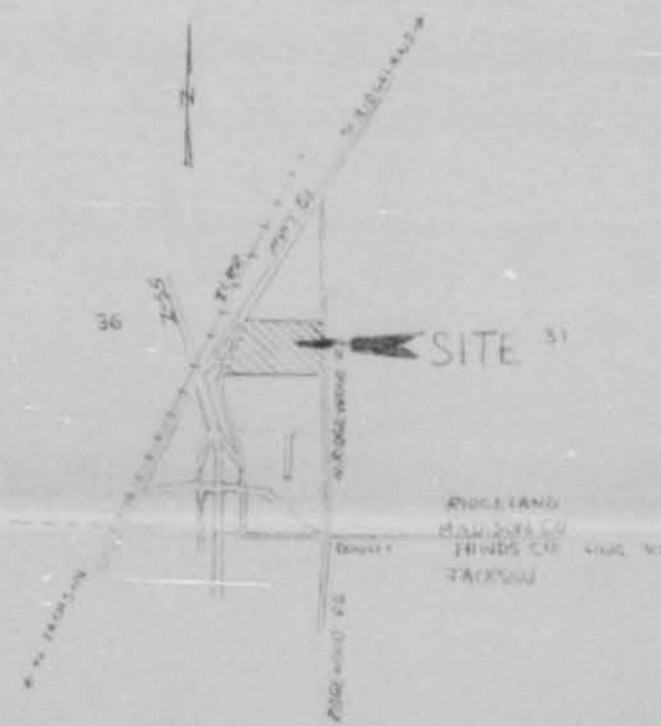


PROPOSED WATER AND SANITARY SEWER FACILITIES  
FOR

SHOWTOWN  
RIDGELAND, MISSISSIPPI



A DEVELOPMENT BY

HABITAT, INC.

APRIL, 1980

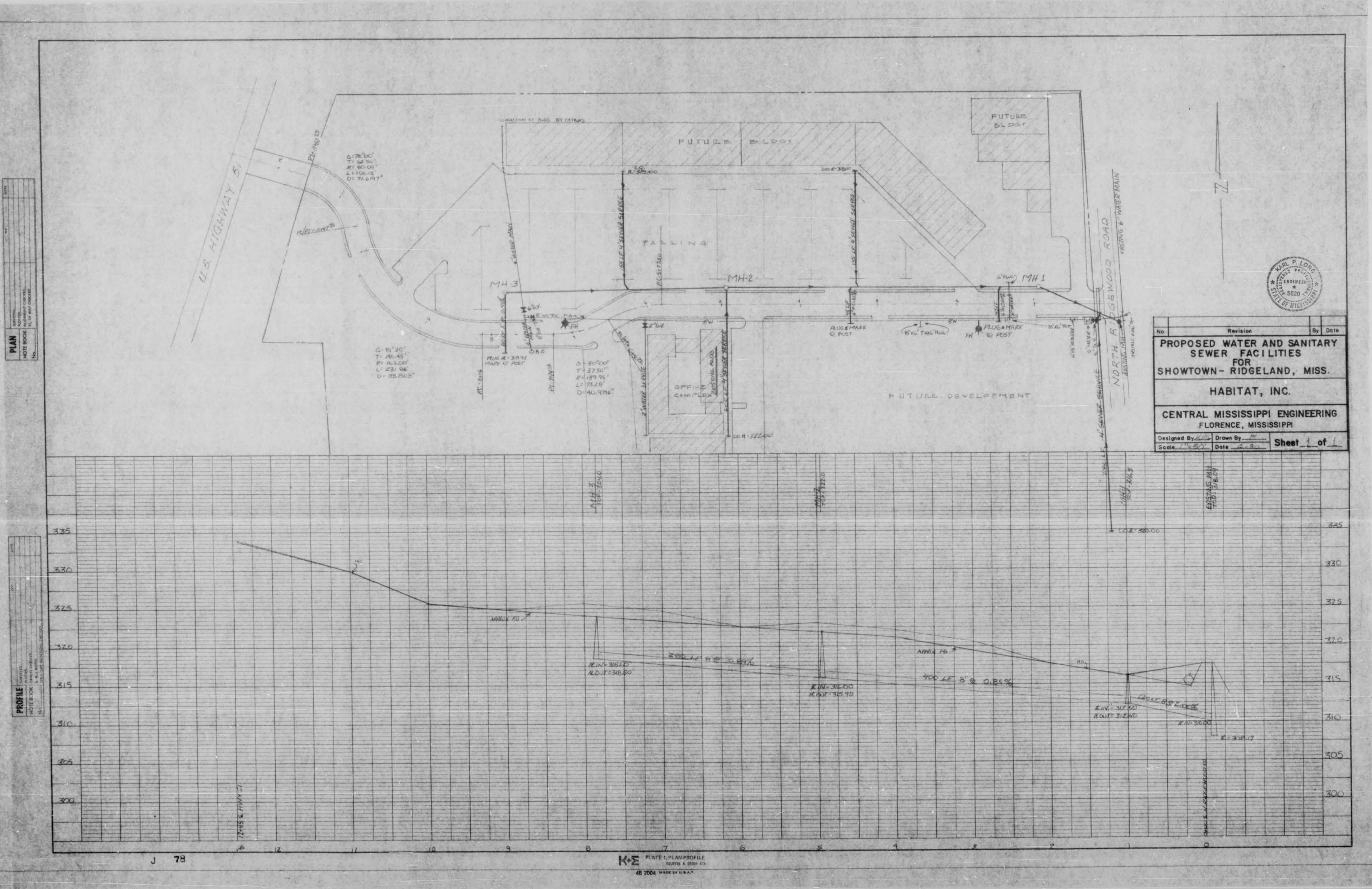
PREPARED BY

CENTRAL MISSISSIPPI ENGINEERING

FLORENCE, MISSISSIPPI

APPROVED 6-25-80  
*Bee Wall*  
BUREAU OF ENVIRONMENTAL HEALTH  
MISSISSIPPI STATE BOARD OF HEALTH

4081



**PLAN**  
 DATE: \_\_\_\_\_  
 DRAWN BY: \_\_\_\_\_  
 CHECKED BY: \_\_\_\_\_  
 IN CHARGE: \_\_\_\_\_

**PROFILE**  
 DATE: \_\_\_\_\_  
 DRAWN BY: \_\_\_\_\_  
 CHECKED BY: \_\_\_\_\_  
 IN CHARGE: \_\_\_\_\_



No.	Revision	By	Date

**PROPOSED WATER AND SANITARY SEWER FACILITIES FOR SHOWTOWN - RIDGELAND, MISS.**

**HABITAT, INC.**

**CENTRAL MISSISSIPPI ENGINEERING FLORENCE, MISSISSIPPI**

Designed By: \_\_\_\_\_ Drawn By: \_\_\_\_\_  
 Scale: 1" = 20' Date: \_\_\_\_\_ Sheet 1 of 1