

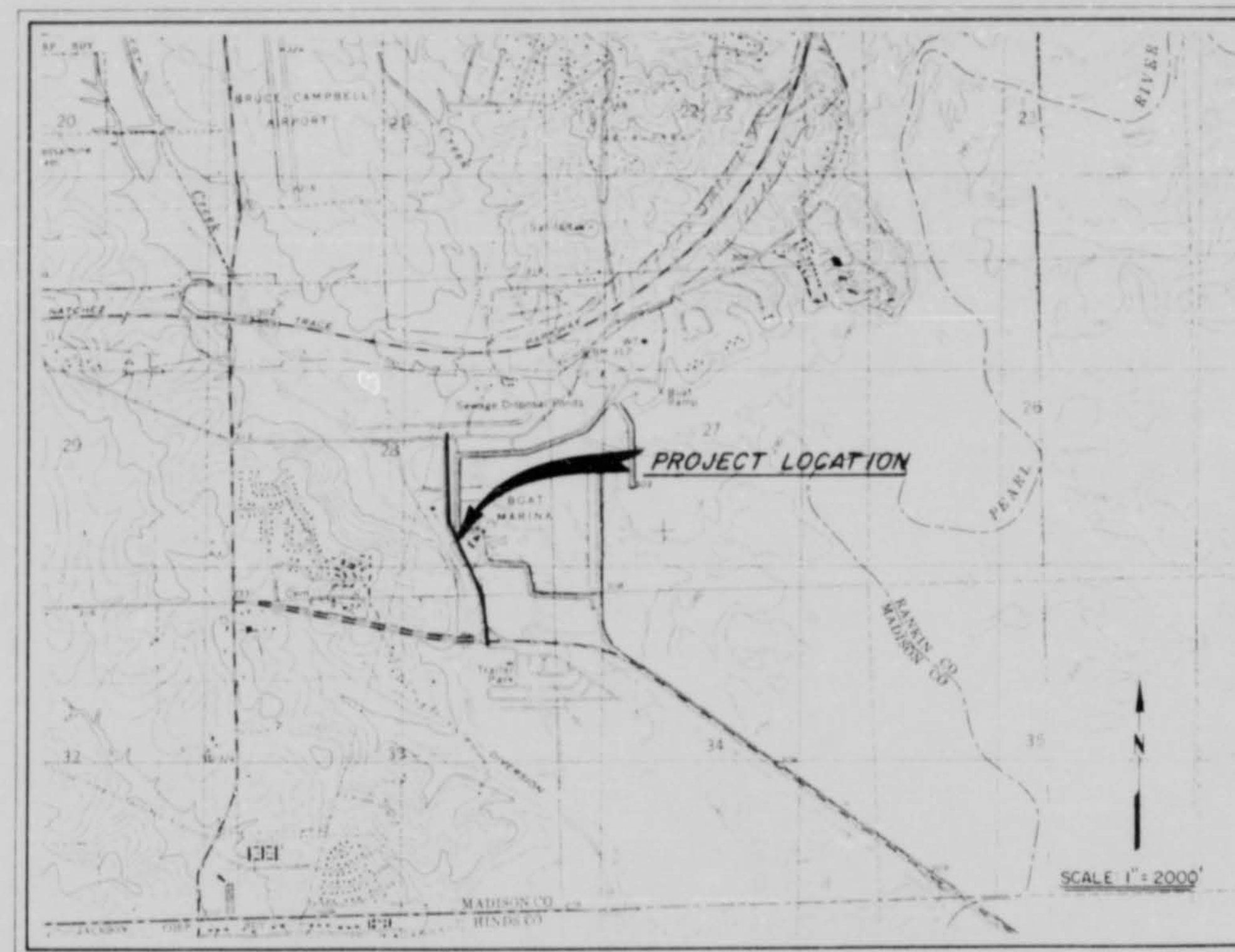
PEARL RIVER VALLEY WATER SUPPLY DISTRICT

WORK ORDER NO. 478

HARBOR DRIVE WATER LINE

MADISON COUNTY, MISSISSIPPI

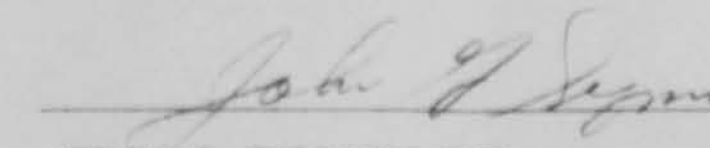
AUGUST 1993



LOCATION MAP

PREPARED BY :

 **NEEL-SCHAFFER, INC.**
ENGINEERS + PLANNERS
Jackson, Mississippi


JOHN G. SIGMAN, P.E.
MISSISSIPPI LICENSE NO. 6764

DATE: 8/23/93

GENERAL MANAGER

KEN GRIFFIN, P.E.

ENGINEER

BENNY FRENCH, P.E.

BOARD OF DIRECTORS

EARL WALKER, JR.
JAMES M. BARNETT
CHARLES BRANCH
ROBERT DOTSON
P. L. HUGHES, SECRETARY
ERLE JOHNSTON
MARK S. JORDAN
VERNARD MURRELL
RICHARD RIDGWAY
BILL STEVENS
JAMES L. SLEDGE, JR.
LARRY TEMPLE
BOB TYLER
SAM VALENTINE

RECORD DRAWING
DATE: 8/23/93
BY: [Signature]

11013

267

INDEX TO DRAWINGS

1. COVER
2. INDEX TO DRAWINGS, GENERAL NOTES AND LEGEND
3. WATER LINE LOCATION
4. WATER LINE LOCATION
5. STANDARD DETAILS
6. TRAFFIC MAINTENANCE DETAILS

GENERAL NOTES

1. EXISTING WATER MAINS, STORM SEWER, SANITARY SEWERS, TELEPHONE CABLES, POWER LINES, GAS MAINS, ELECTRICAL CONDUITS AND OTHER UTILITIES ARE SHOWN FOR CONTRACTOR'S INFORMATION ONLY. LOCATION OF UTILITIES MAY VARY FROM THAT SHOWN ON CONSTRUCTION PLANS. CONTRACTOR SHALL ASSUME ALL RESPONSIBILITY FOR LOCATING AND PROTECTING ALL UTILITIES INCLUDING ANY NOT SHOWN ON THE CONSTRUCTION PLANS.
2. ALL WORK SHOWN ON THESE DRAWINGS SHALL BE PERFORMED BY PEARL RIVER VALLEY WATER SUPPLY DISTRICT FORCES.
3. WRITTEN DIMENSIONS AND ELEVATIONS SHALL GOVERN OVER SCALED DIMENSIONS AND ELEVATIONS.
4. COUNTY ROAD PERMITS TO OBTAINED BY OWNER.
5. ALL PIPE SHALL HAVE A MINIMUM COVER OF 30".

RECORD DRAWING
DATE: 11/14/11
BY: [Signature]

HARBOR DRIVE WATER LINE
N.S. ACCOUNT NO. 3-1620-29

INDEX TO DRAWINGS,
GENERAL NOTES AND LEGEND

PEARL RIVER VALLEY
WATER SUPPLY DISTRICT

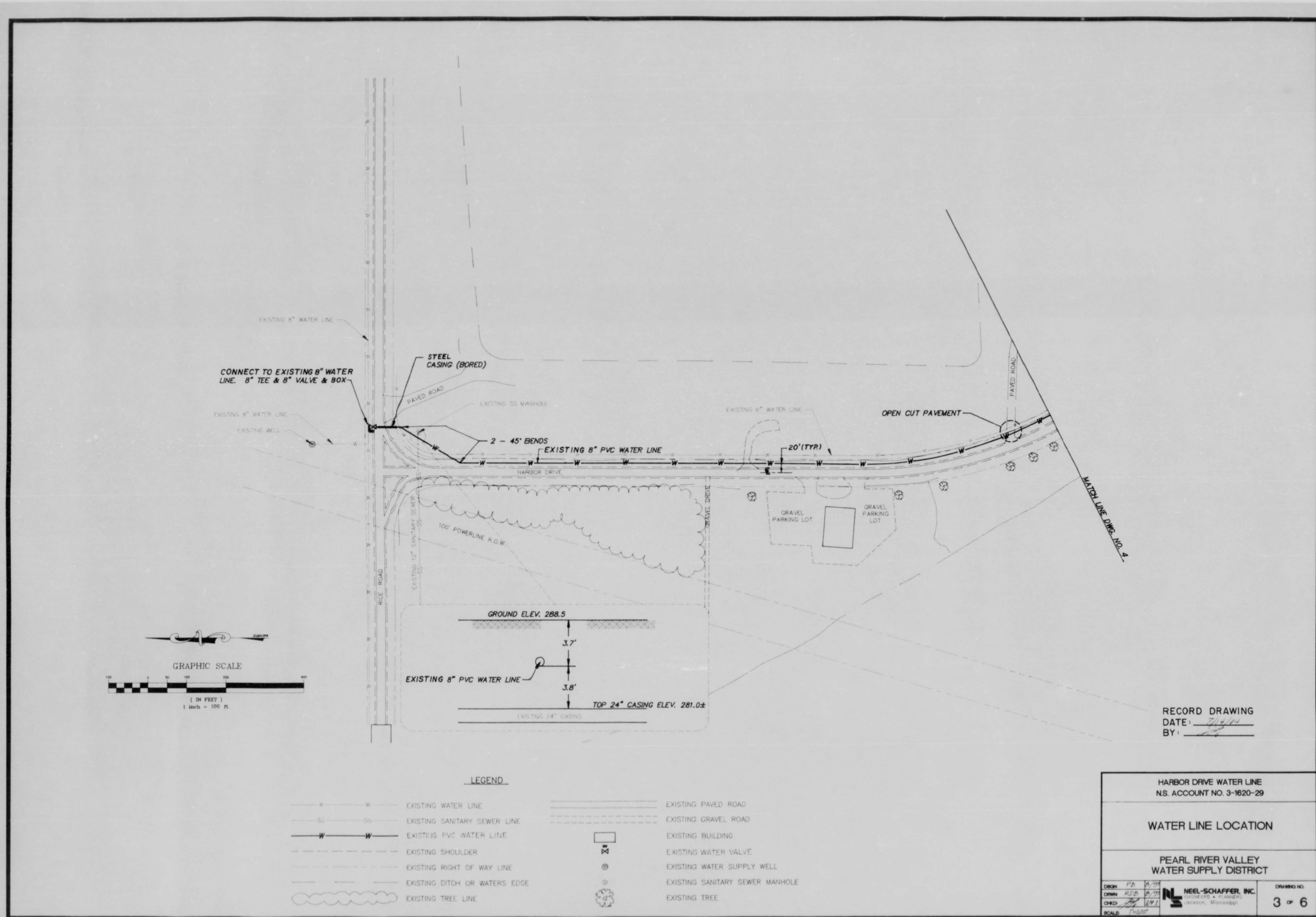
DRWN	PD	9/29/11
CHKD	RJD	9/29/11
SCALE	NTS	

NEEL-SCHAFFER, INC.
ENGINEERS • PLUMBERS
JACKSON, MISSISSIPPI

DRAWING NO.
2 OF 6

1620-503.DWG (06) (P&S-30)

268



CONNECT TO EXISTING 8" WATER LINE. 8" TEE & 8" VALVE & BOX

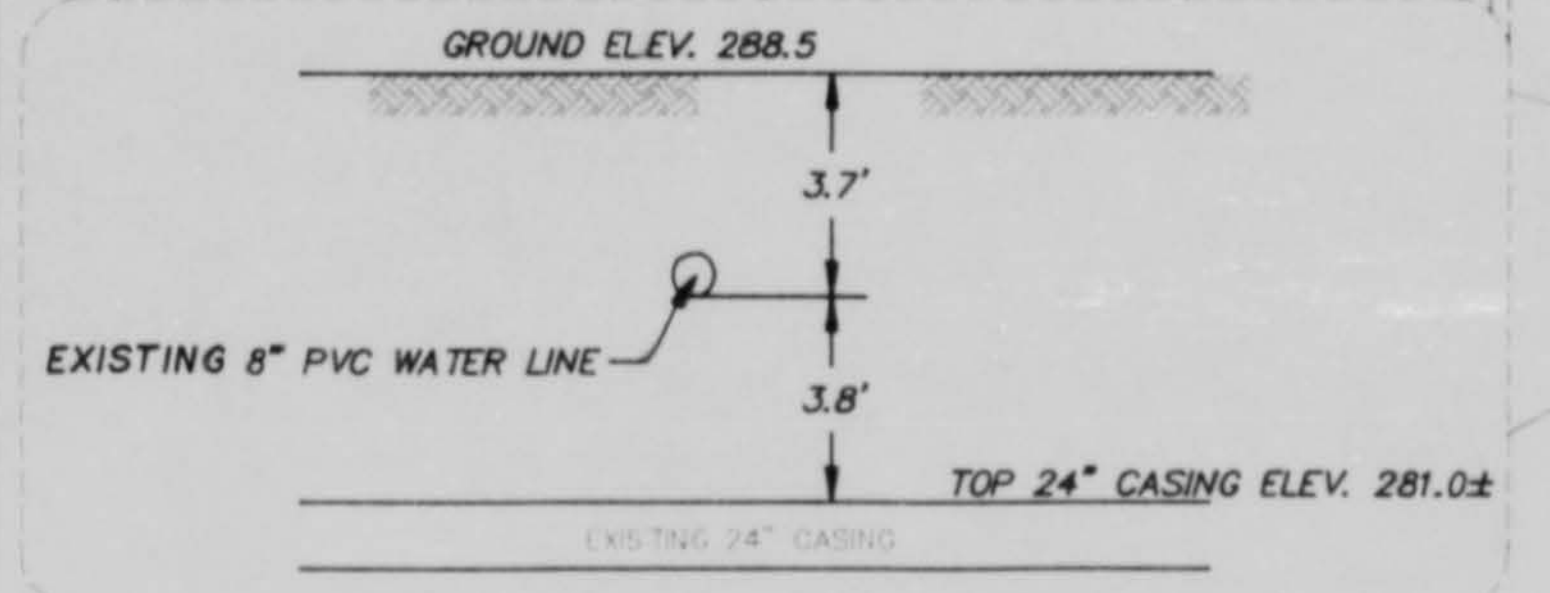
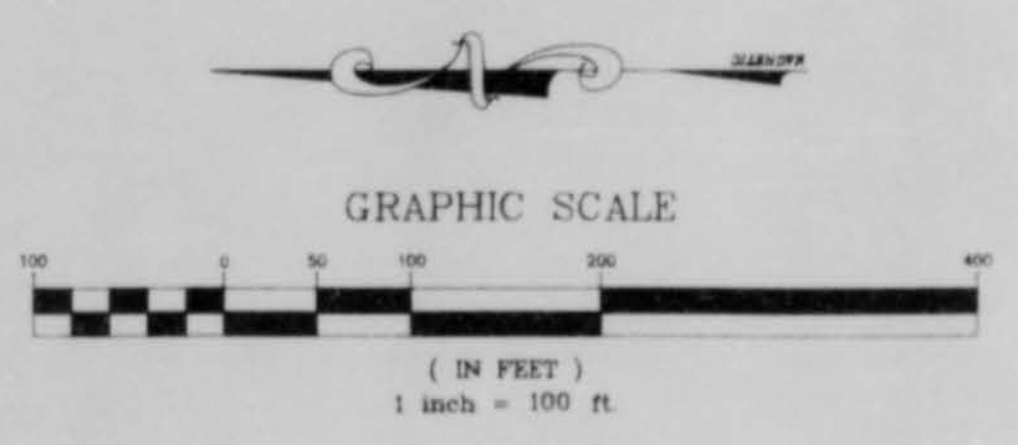
STEEL CASING (BORED)

2 - 45° BENDS
EXISTING 8" PVC WATER LINE

20'(TYR)

OPEN CUT PAVEMENT

GRAVEL PARKING LOT
GRAVEL PARKING LOT



RECORD DRAWING
DATE: 7/14/11
BY: [Signature]

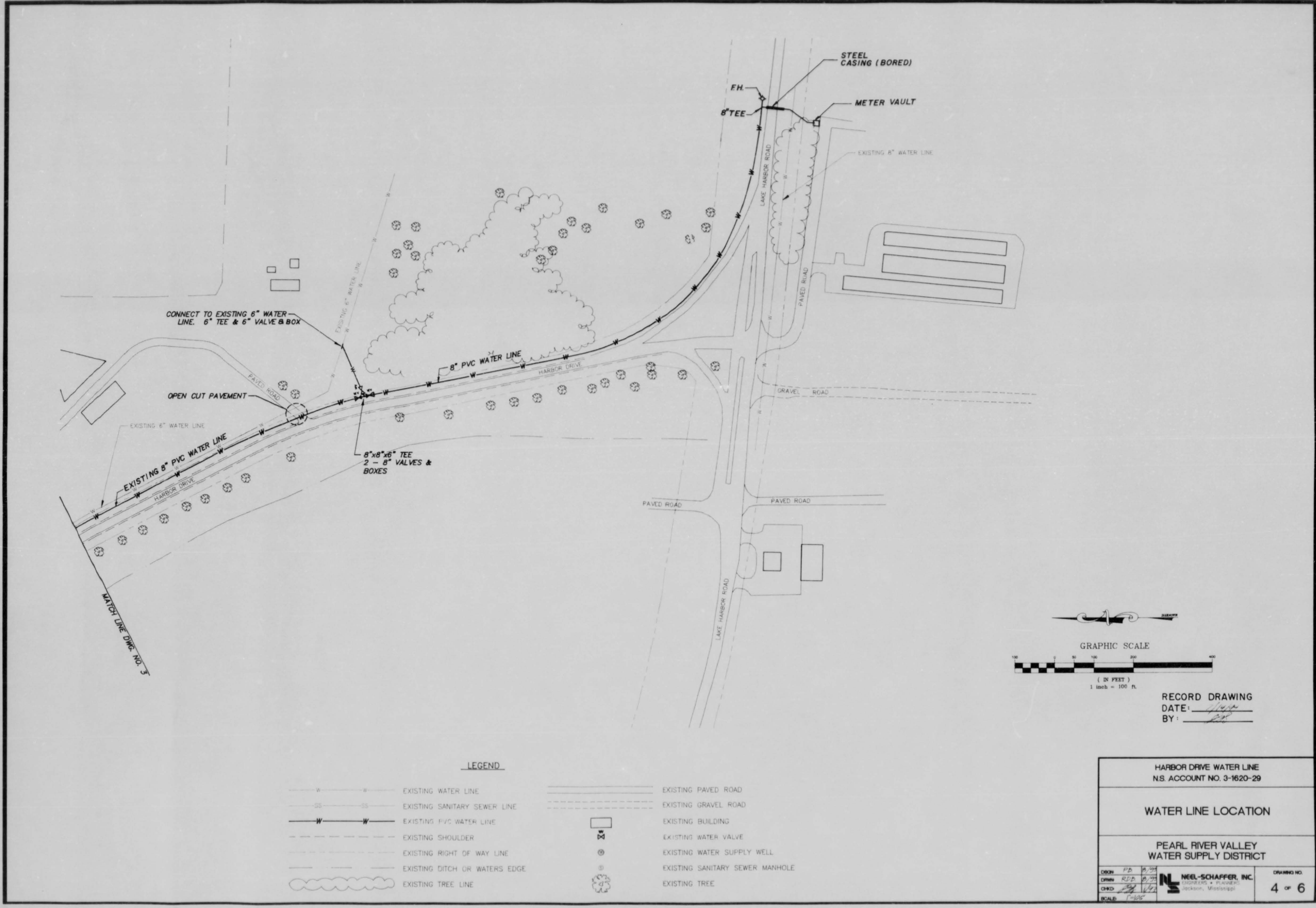
LEGEND

- W — W — EXISTING WATER LINE
- SS — SS — EXISTING SANITARY SEWER LINE
- W — W — EXISTING PVC WATER LINE
- - - - - EXISTING SHOULDER
- - - - - EXISTING RIGHT OF WAY LINE
- - - - - EXISTING DITCH OR WATERS EDGE
- ~~~~~ EXISTING TREE LINE
- ===== EXISTING PAVED ROAD
- - - - - EXISTING GRAVEL ROAD
- EXISTING BUILDING
- ⊗ EXISTING WATER VALVE
- ⊙ EXISTING WATER SUPPLY WELL
- ⊕ EXISTING SANITARY SEWER MANHOLE
- ⊗ EXISTING TREE

HARBOR DRIVE WATER LINE N.S. ACCOUNT NO. 3-1620-29	
WATER LINE LOCATION	
PEARL RIVER VALLEY WATER SUPPLY DISTRICT	
DESIGNED: P.D. DRAWN: R.D.B. CHECKED: [Signature] SCALE: 1"=100'	DRAWING NO. 3 of 6 NEEL-SCHAFFER, INC. ENGINEERS & PLANNERS Jackson, Mississippi

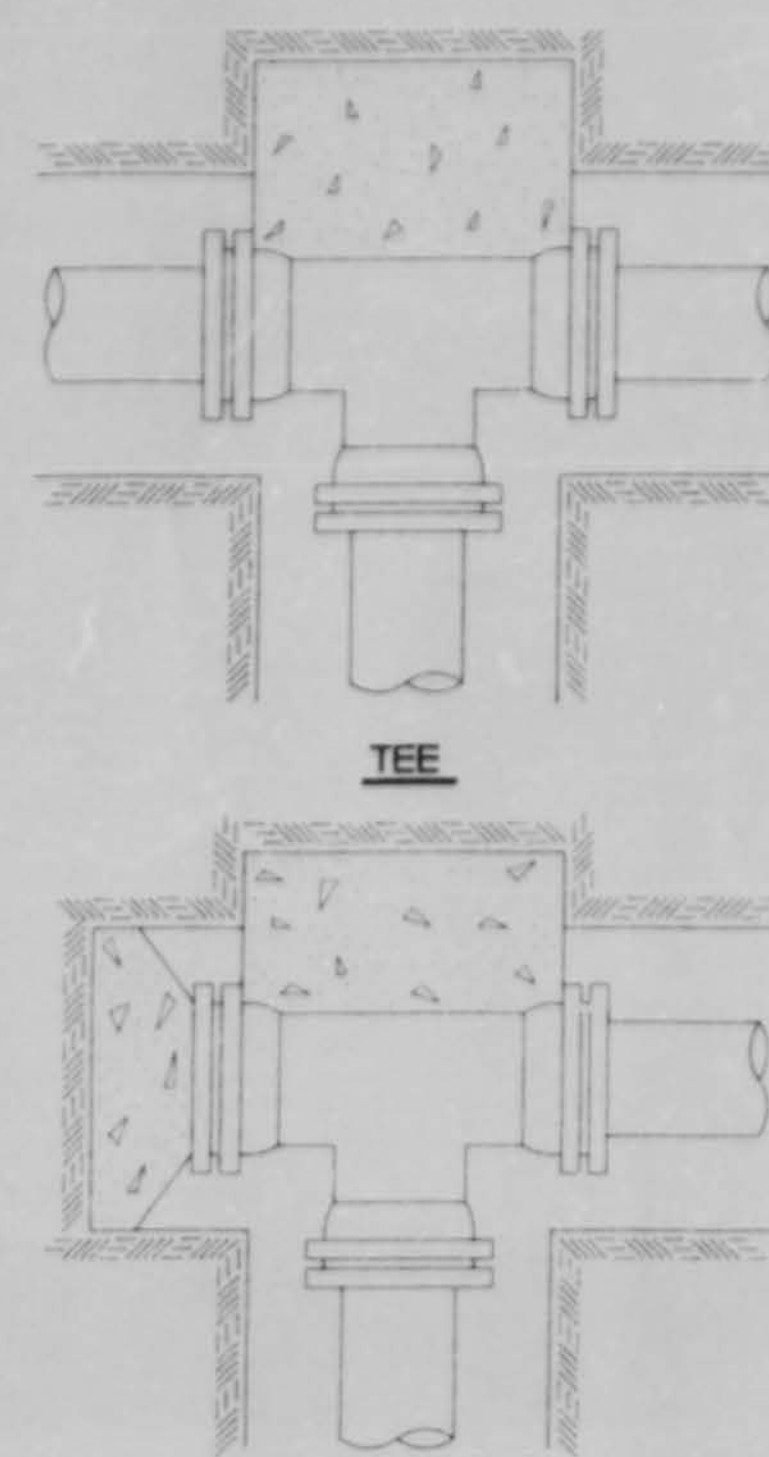
269

1620-500.DWG (PLOT FILE PAPER SPACE) (01)

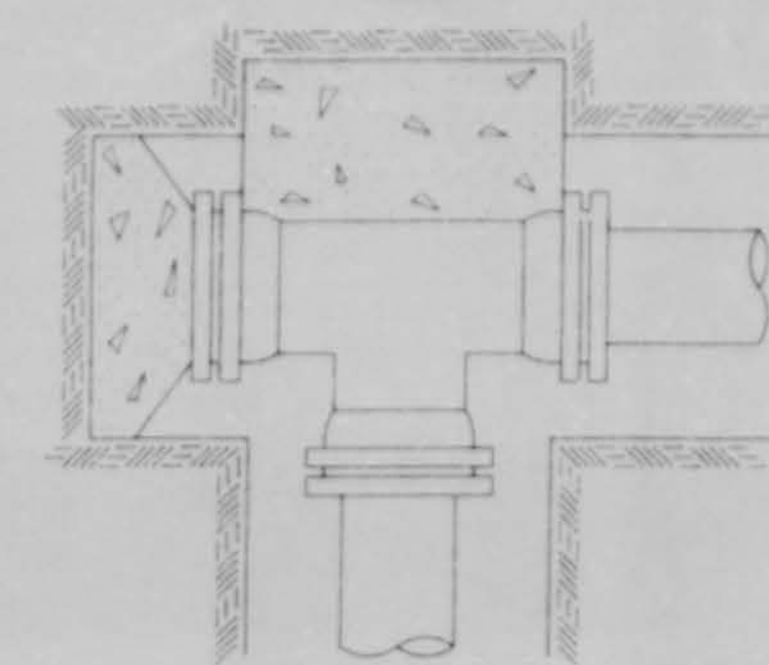


270

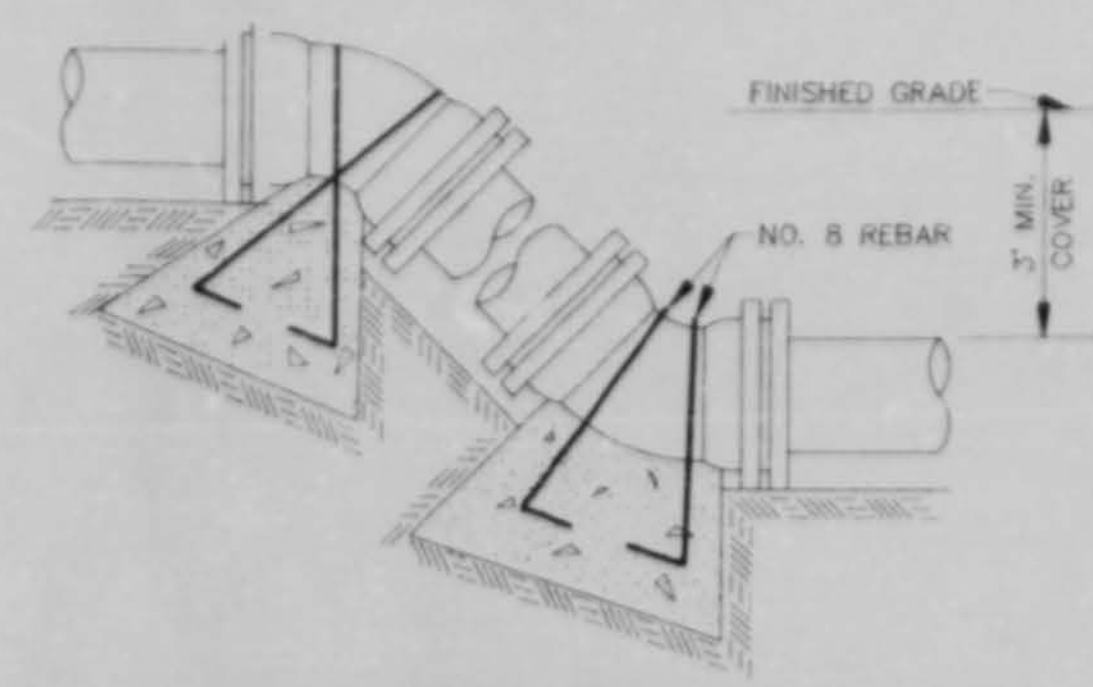
1620-500.DWG (PLOT FILE PAPER SPACE) (01)



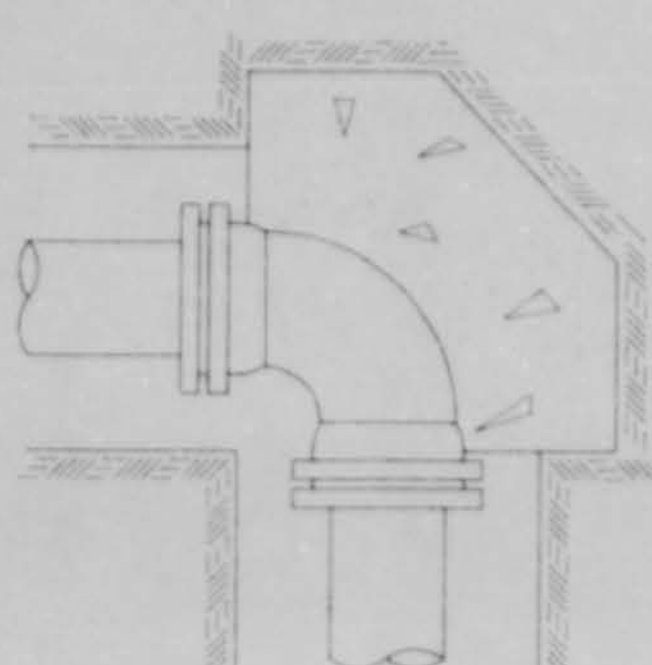
TEE



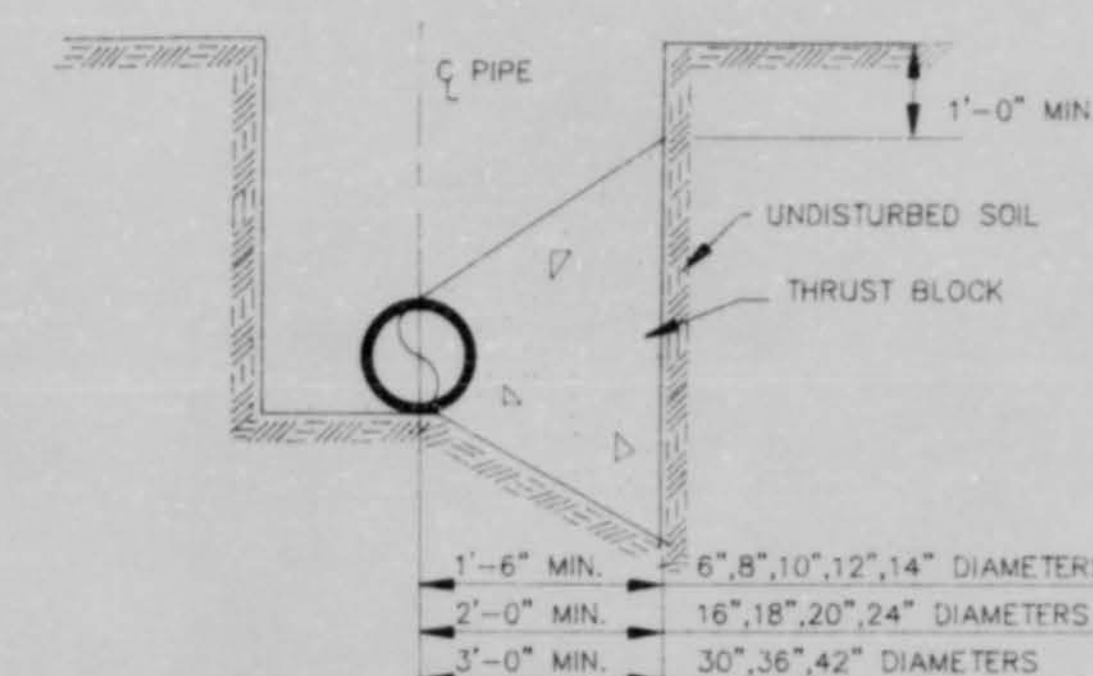
PLUGGED TEE



VERTICAL BENDS



90° BEND



TYPICAL CROSS SECTION

TYPICAL THRUST BLOCKING IN WATER MAINS AND SEWAGE FORCE MAINS

NOTE: ALL THRUST BLOCKS 2,500 PSI CONCRETE AGAINST UNDISTURBED EARTH
N.T.S.

BEARING AREA IN SQ. FT.

NOMINAL PIPE DIAMETER (IN)	DEAD-END OR TEE	90° BEND	45° BEND	22 1/2° BEND	11 1/4° BEND
6	2.5	3.0	2.0	2.0	2.0
8	4.0	6.0	3.0	2.0	2.0
10	6.0	9.0	5.0	2.5	2.0
12	9.0	11.0	6.0	3.5	2.0
14	12.0	18.0	9.0	5.0	2.5
16	16.0	22.5	12.0	6.0	3.0
18	20.0	28.0	15.0	8.0	4.0
20	24.5	34.0	19.0	10.0	5.0
24	35.0	49.0	27.0	14.0	7.0
30	54.0	76.0	41.0	21.0	10.0
36	77.0	108.0	59.0	30.0	15.0
42	104.0	146.0	79.0	40.0	20.0

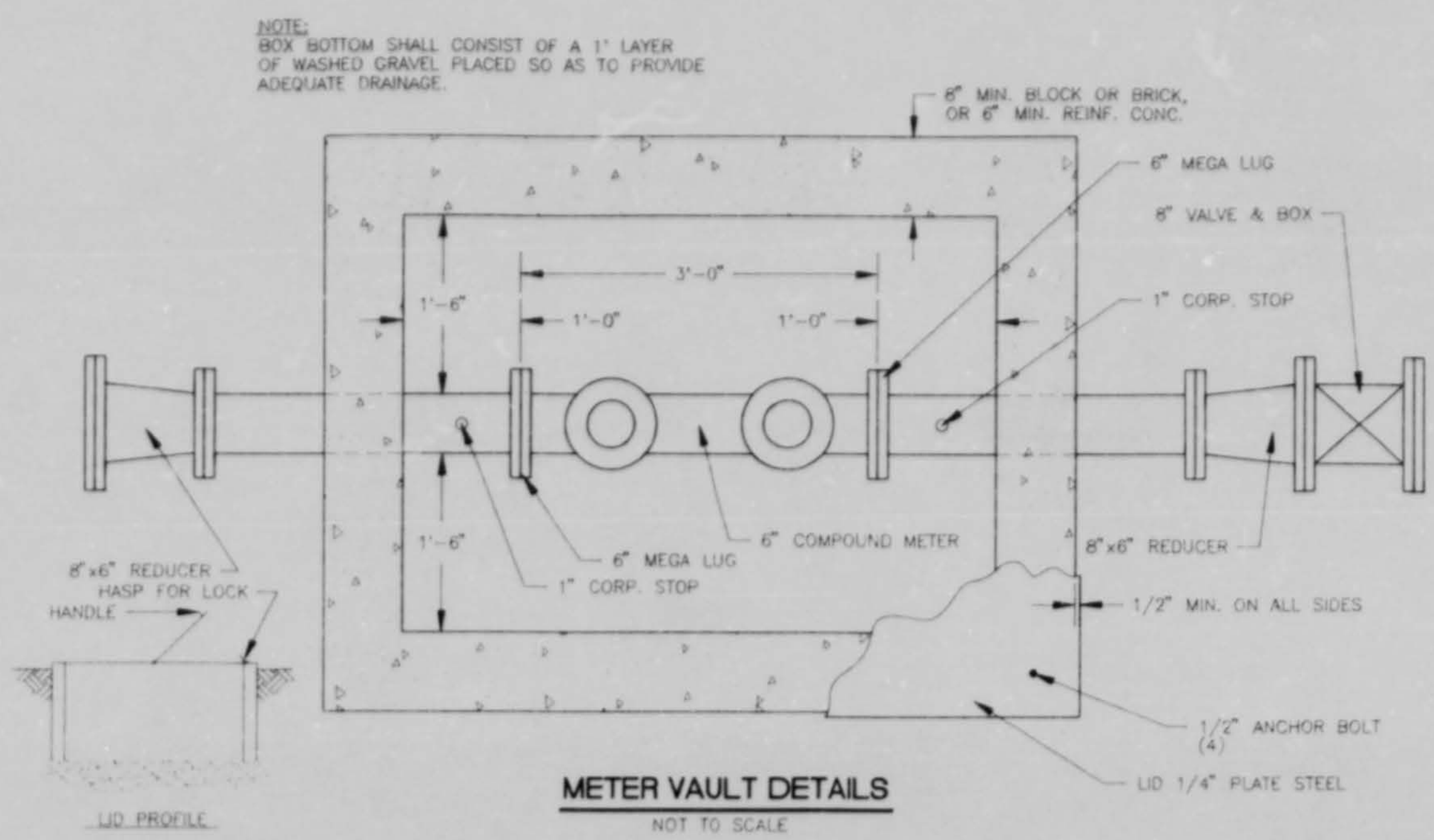
NOTE: ABOVE VALUES CALCULATED USING P=100 PSI AND ALLOW-ANCE, SOIL BRG. = 1500 PSF. FOR DIFFERENT P, MULTIPLY ABOVE VALUES BY P/100.
FOR DIFFERENT SOIL BRG, MULTIPLY ABOVE VALUES BY 1500/S.B.

VERTICAL BENDS

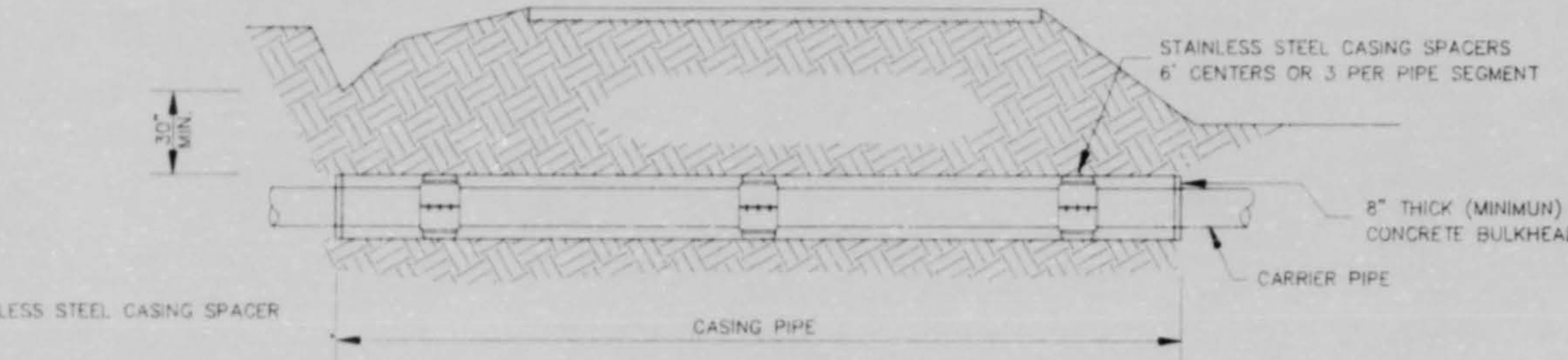
NOMINAL PIPE DIAMETER (IN)	DEAD-END OR TEE	90° BEND	45° BEND	22 1/2° BEND	11 1/4° BEND
6	—	26.0(1.0)	14.0(5)	7.0(3)	—
8	—	45.0(1.7)	25.0(9)	13.0(5)	—
10	—	68.0(2.5)	37.0(1.4)	19.0(7)	—
12	—	97.0(3.6)	52.0(1.9)	27.0(1.0)	—
14	—	130(4.8)	70.0(2.6)	36.0(1.3)	—
16	—	168(6.2)	91.0(3.4)	46.0(1.7)	—
18	—	211(7.8)	114(4.2)	58.0(2.2)	—
20	—	259(9.6)	140(5.2)	72.0(2.6)	—
24	—	370(13.7)	200(7.4)	102(3.8)	—
30	—	568(21.1)	308(11.4)	156(5.8)	—
36	—	814(30.1)	440(16.3)	225(8.3)	—
42	—	1100(40.7)	595(22.0)	303(11.2)	—

VOLUME OF BLOCKS INCLUDING SOIL LOAD CU. FT. (CU. YDS.)

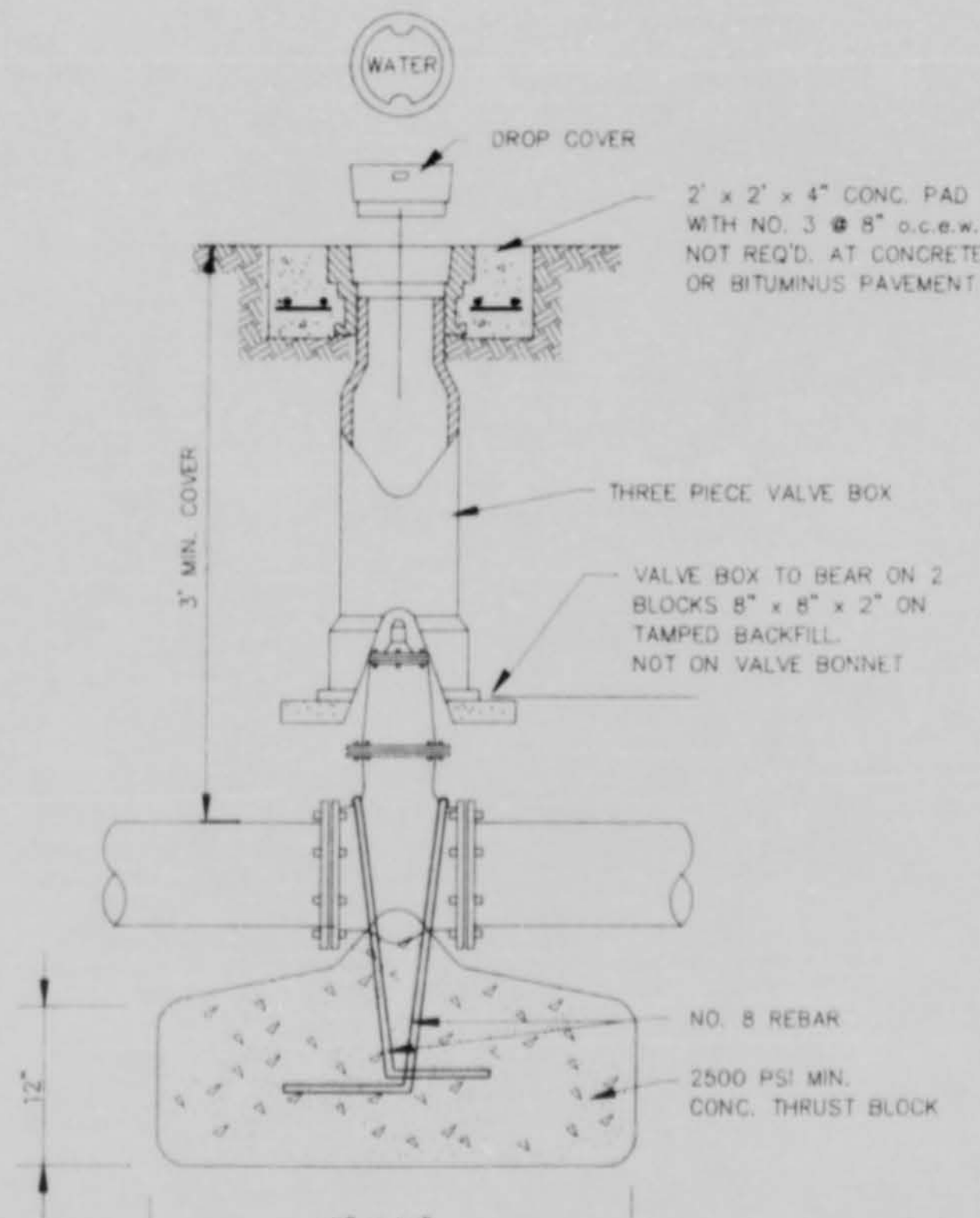
NOTE: ABOVE VALUES REPRESENT THE VOLUME OF BLOCKS INCLUDING SOIL LOAD IN CU. FT. (CU. YDS.) THE VALUES WERE CALCULATED USING A P=100 PSI AND A S.F.=1.5. FOR DIFFERENT P, MULTIPLY VALUES BY P/100.



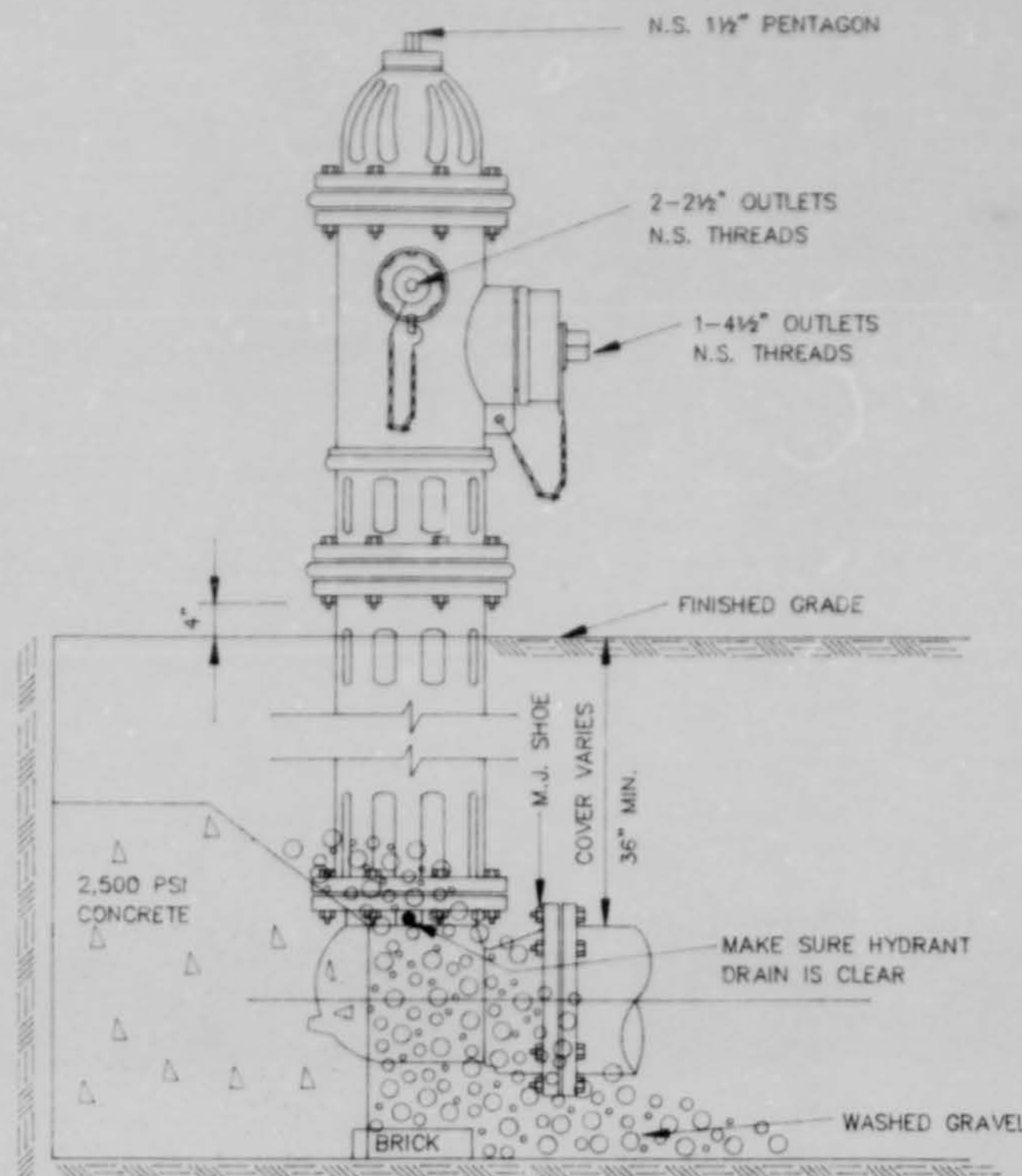
METER VAULT DETAILS
NOT TO SCALE



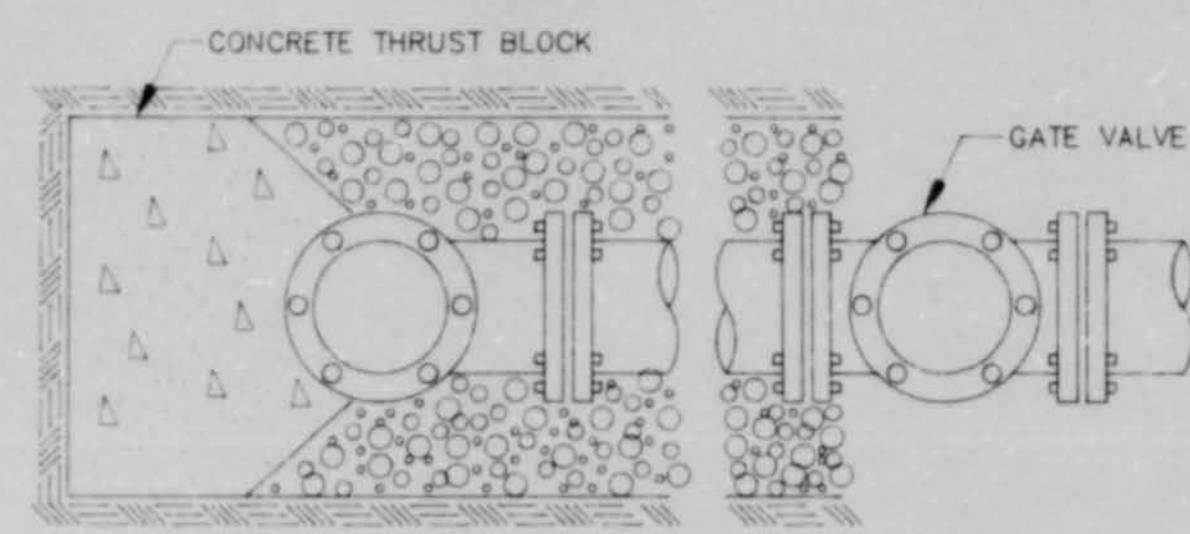
TYPICAL BORE SECTION
N.T.S.



GATE VALVE DETAILS
NOT TO SCALE



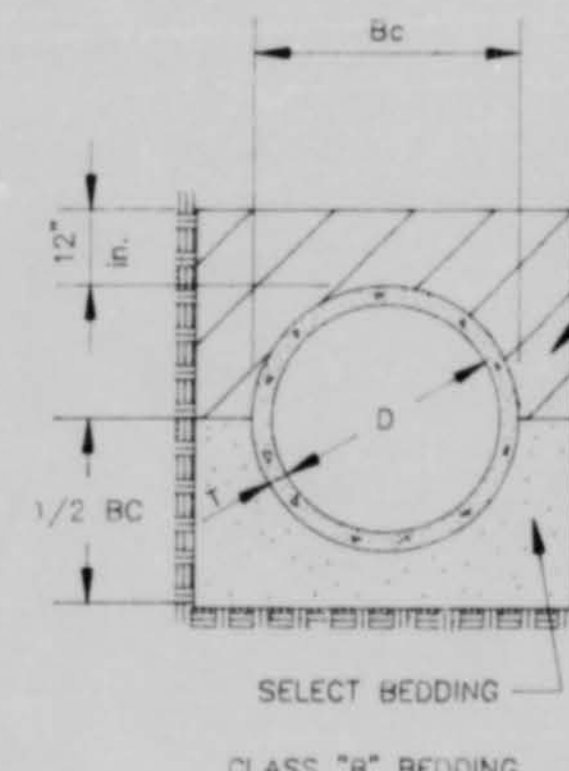
ELEVATION



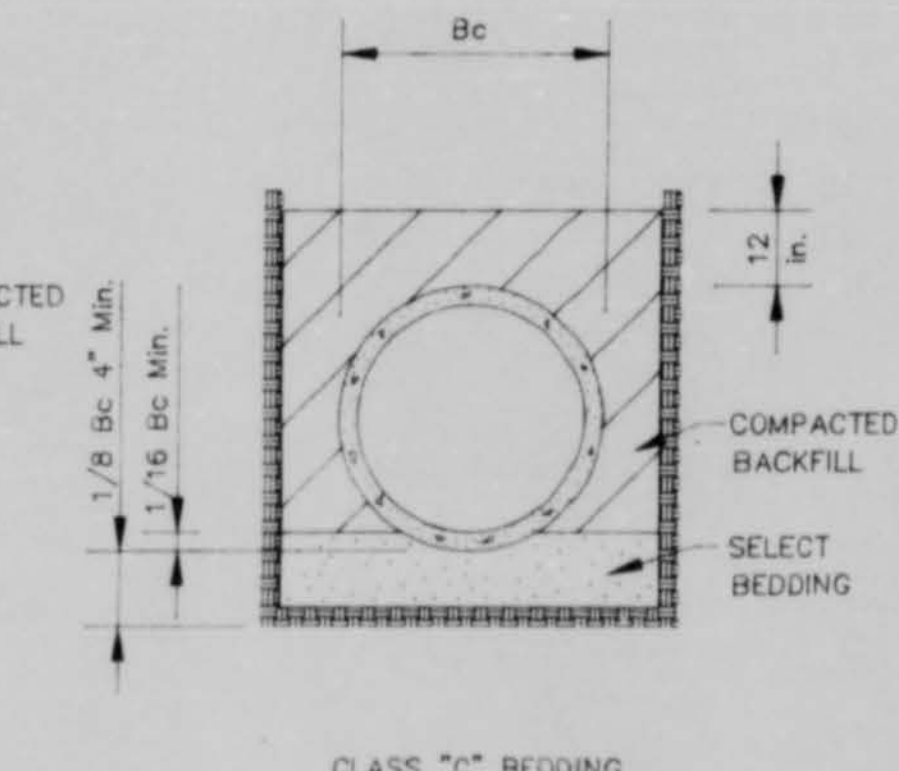
PLAN

TYPICAL FIRE HYDRANT INSTALLATION

NOTE: GATE VALVES WILL BE REQUIRED ON ALL FIRE HYDRANT LEGS.
N.T.S.



CLASS "B" BEDDING



CLASS "C" BEDDING

TYPICAL TRENCH DETAILS

NOT TO SCALE

RECORD DRAWING

DATE: 7/14/04

BY: [Signature]

HARBOR DRIVE WATER LINE
N.S. ACCOUNT NO. 3-1620-29

STANDARD DETAILS

PEARL RIVER VALLEY
WATER SUPPLY DISTRICT

DRW: PD
CHKD: RPB
SCALE: N.T.S.

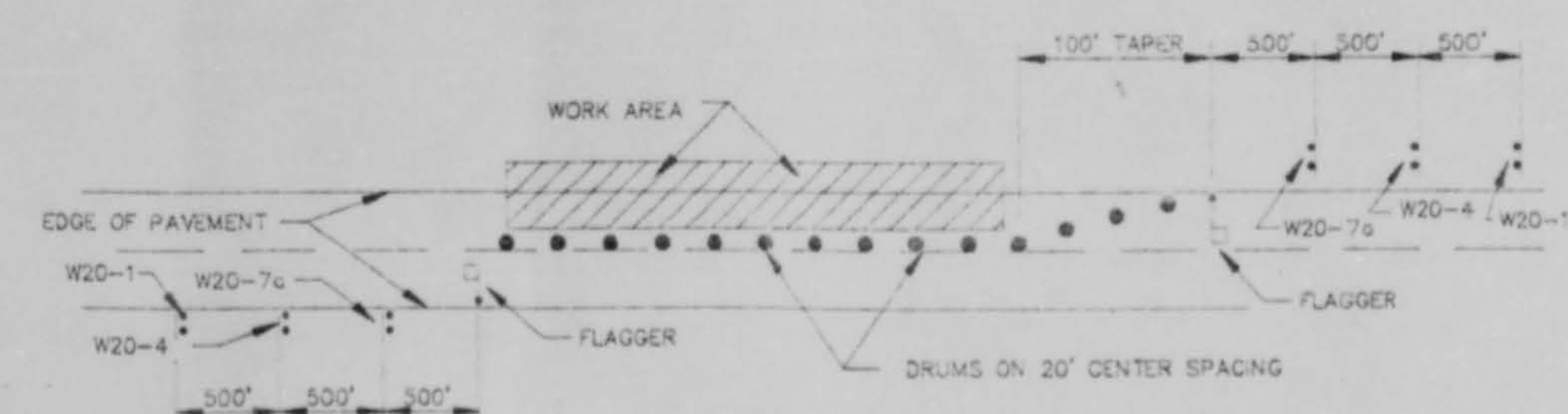
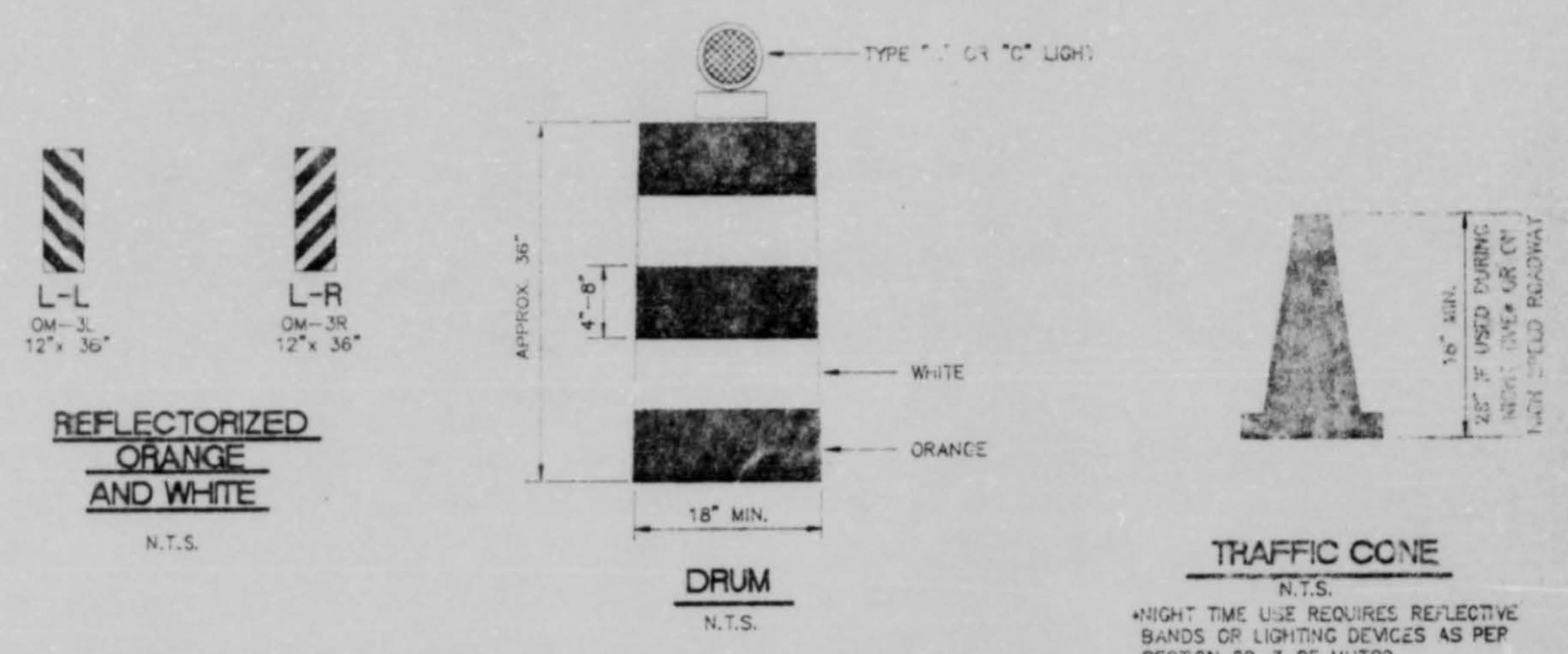
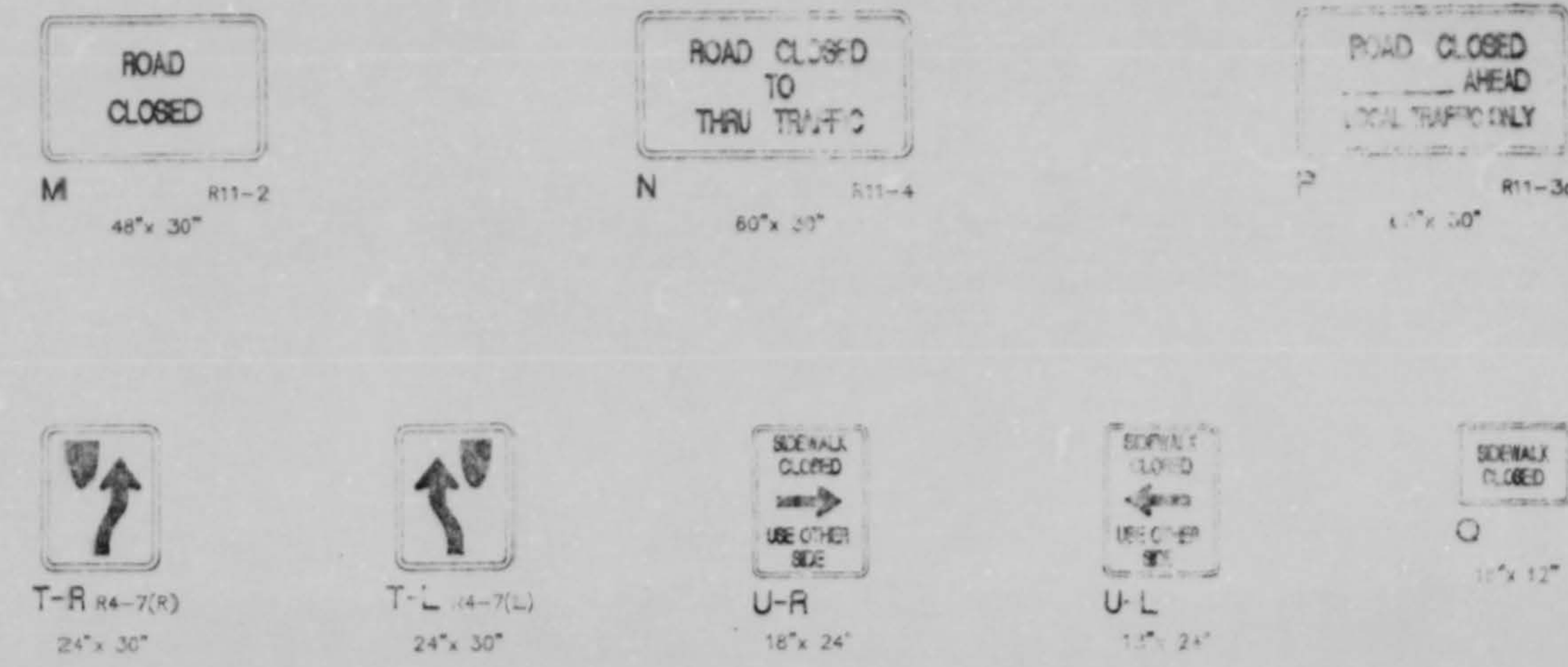
NEEL-SCHAFFER, INC.
ENGINEERS & PLUMBERS
Jackson, Mississippi

DRAWING NO.
5 OF 6

BLACK MESSAGE ON ORANGE REFLECTIVE BACKGROUND - SIGNS A THRU K, R, S, V, Z
 MINIMUM SIZE 33" x 36" REQUIRED FOR ALL "W" SERIES SIGNS
 N.T.S.

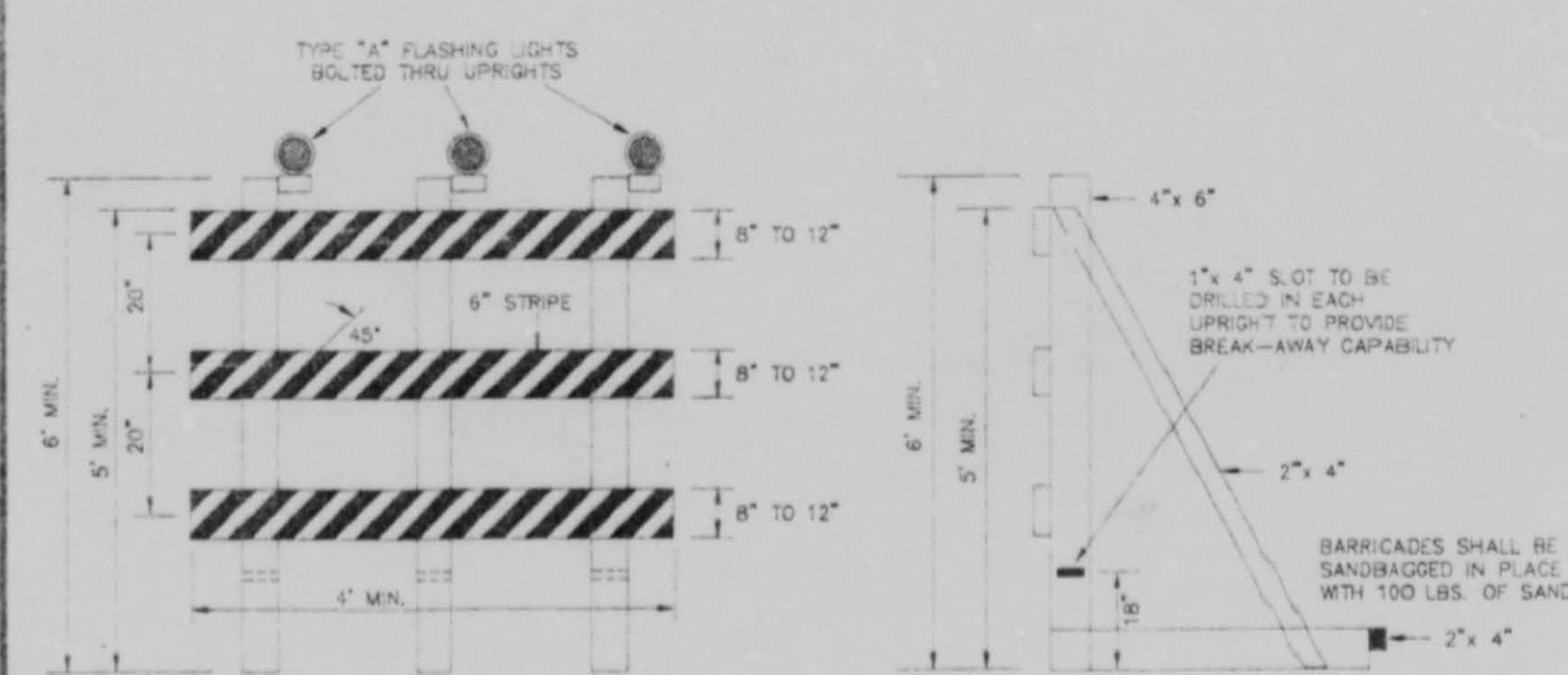


BLACK MESSAGE ON WHITE REFLECTIVE BACKGROUND
 SIGNS M, N, P, Q, T, U, W, X, Y
 N.T.S.

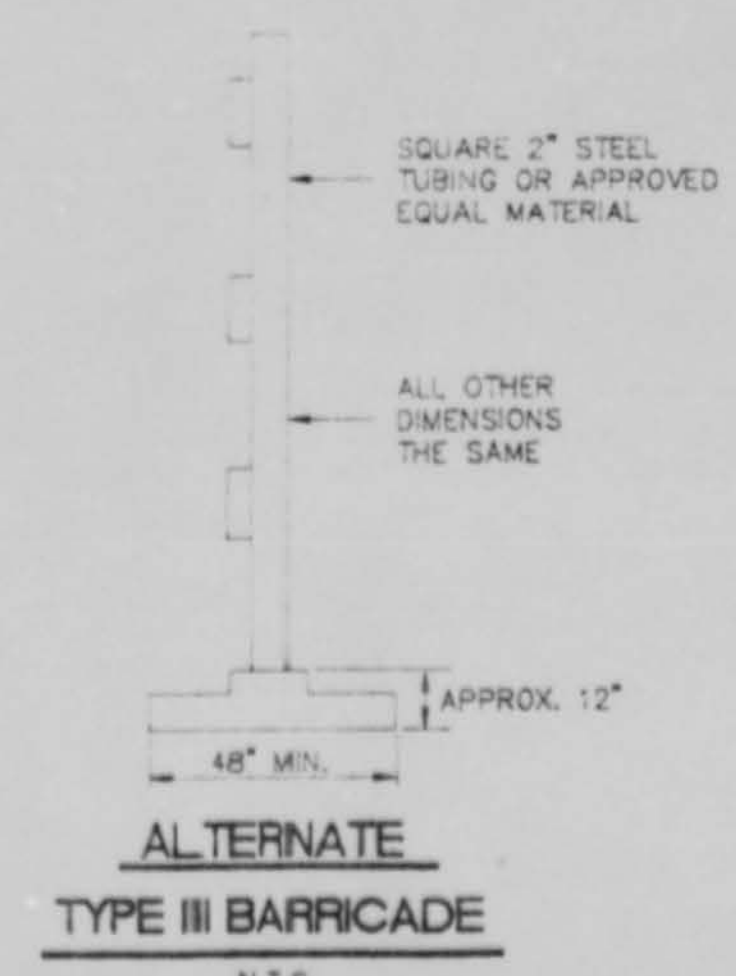


NOTES:
 1. LANE SHALL NOT REMAIN CLOSED WHEN WORK ACTIVITY IS STOPPED.
 2. LANE SHALL NOT BE CLOSED OVER NIGHT.

TEMPORARY LANE CLOSURE DETAIL
 N.T.S.



TYPE III BARRICADE
 N.T.S.



RECORD DRAWING DATE: 7/14/88 BY: [Signature]

HARBOUR DRIVE WATER LINE
 N.S. ACCOUNT NO. 3-1620-29

TRAFFIC MAINTENANCE DETAILS

PEARL RIVER VALLEY WATER SUPPLY DISTRICT

OSGN: J.B. 1987
 DRAWN: J.B. 1987
 CHK: J.B. 1987
 SCALE: 1/2"

NEEL-SCHAFER, INC.
 11111 Highway 101
 Houston, Texas 77036

DRAWING NO. 6 OF 6