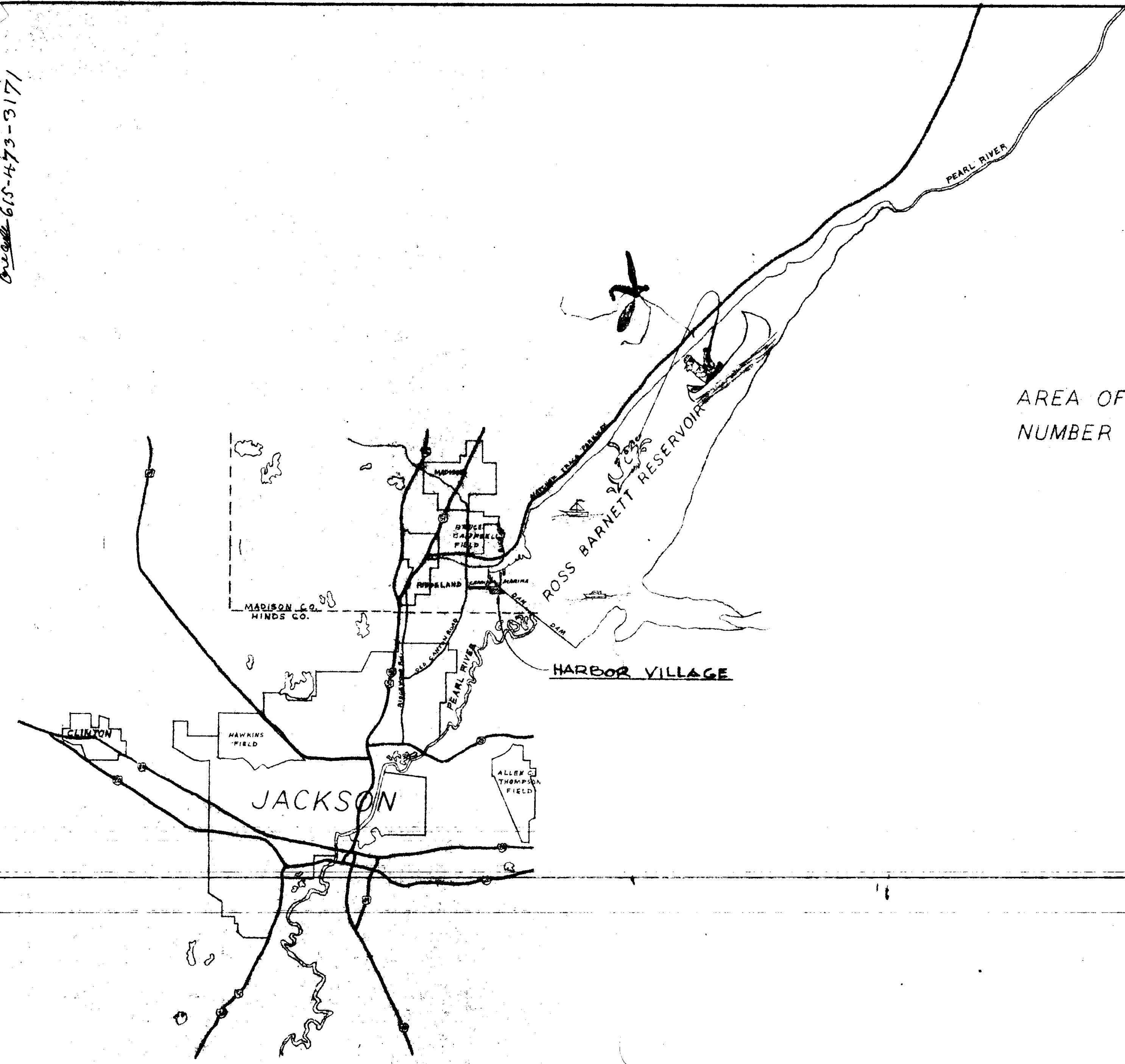


CITY OF RIDGELAND  
 BILL GATES

J. D. MILLIGAN & SONS - MS - MINNIVILLE, MISSISSIPPI  
 PHONE 601-473-3171

PHIL KANTOR ARCHITECTS - (800) 752-2323



SITE DATA

AREA OF MOBILE HOME DEVELOPMENT 46.6 AC.  
 NUMBER OF UNITS 259 UNITS

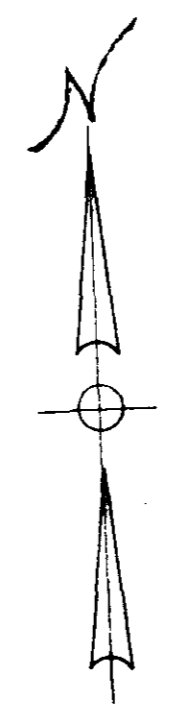
INDEX	
SHEET	DESCRIPTION
1	TITLE SHEET
2	PLOT PLAN
3	WATER DISTRIBUTION SYSTEM
4	SANITARY SEWER SYSTEM
5	STORM DRAINAGE PLAN
6	ELECTRIC PLAN
7	GAS DISTRIBUTION SYSTEM
8	TELEPHONE SYSTEM
9	TELEVISION SYSTEM
10	SANITARY SEWER PROFILE
11	SANITARY SEWER PROFILE
12	TYPICAL DETAILS
13	STORM DRAINAGE DETAILS
14	LANDSCAPE PLAN
15	RECREATION, OFFICE AND LAUNDRY
16	LIGHTING PLAN
17	POWER PLAN
18	ELECTRICAL SCHEDULE
19	HEATING AND A/C

# HARBOR VILLAGE, INC.

HARBOR VILLAGE MOBILE HOME SUBDIV.  
 IN MADISON COUNTY  
 AT JACKSON, MISSISSIPPI  
 Philip Kantor Associates, Inc.

PWP-00801

DESIGNED BY T. S. L. B.  
 APPROVED BY  
 TITLE SHEET



CHARITY CHURCH ROAD

ROSS BARNETT RESERVOIR

MAIN DAM ROADWAY

CROSS HATCHING  
DEAK'S 24" CONC.  
CURB & GUTTER  
PER DETAILS

34' PAVING

12' PAVING

TRAFFIC SIGNAL  
AREA  
SEE DETAIL SHEET

N 08° E 1046.78'

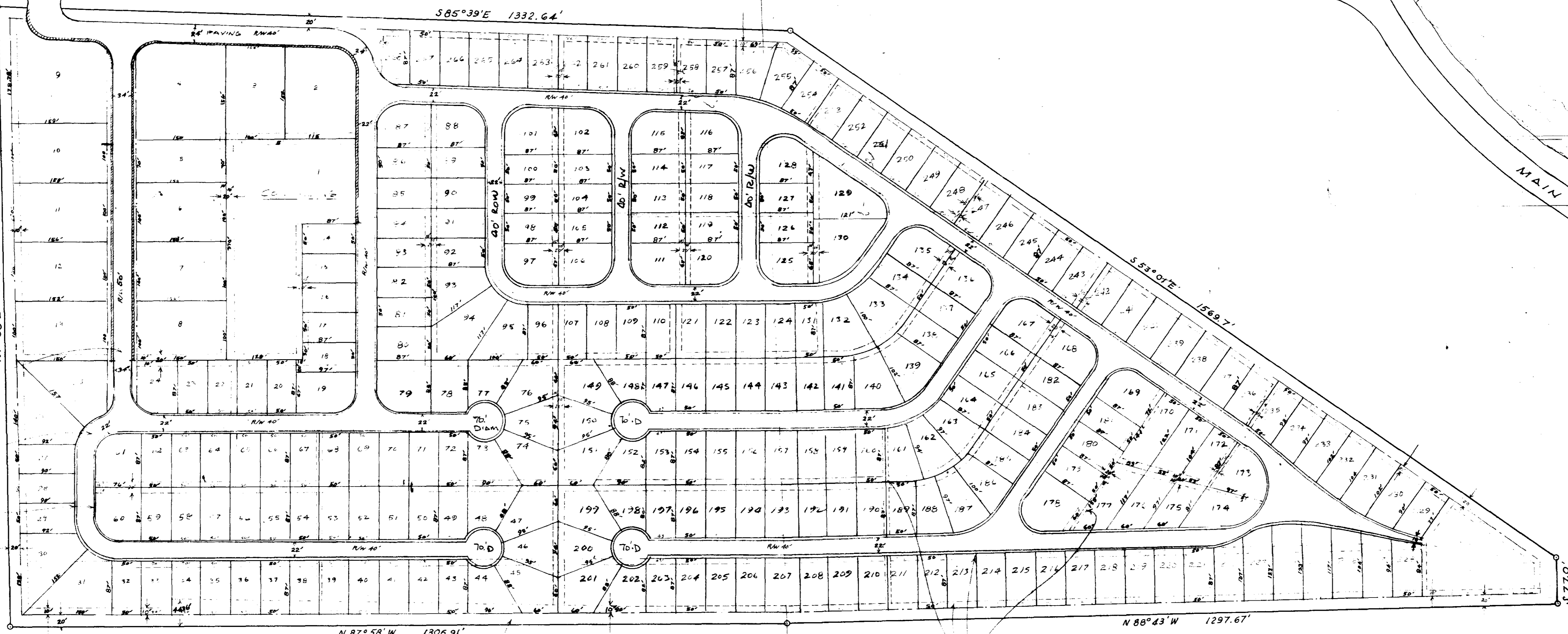
S 85° 39' E 1332.64'

S 53° 07' E 1569.7'

N 87° 58' W 1306.91'

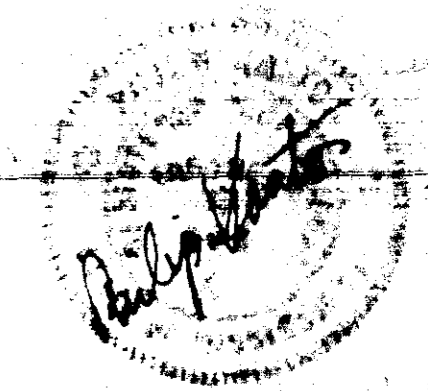
N 88° 43' W 1297.67'

5770'



5' BUFFER ZONE & UTILITY  
EASEMENT

SECTION 33, T7N, R2E  
SECTION 33, T7N, R2E



HARBOR VILLAGE MOBILE HOME SUBDIVISION  
IN MADISON COUNTY  
AT JACKSON, MISSISSIPPI

*Philip Kantor Associates, Inc.*  
Designers & Engineers MEMPHIS, TENN. 38119

8661 SHADY GLEN ROAD

DATE 2/12/12	DRAWN BY P.K.
REVISED 2/24/12	APPROVED BY

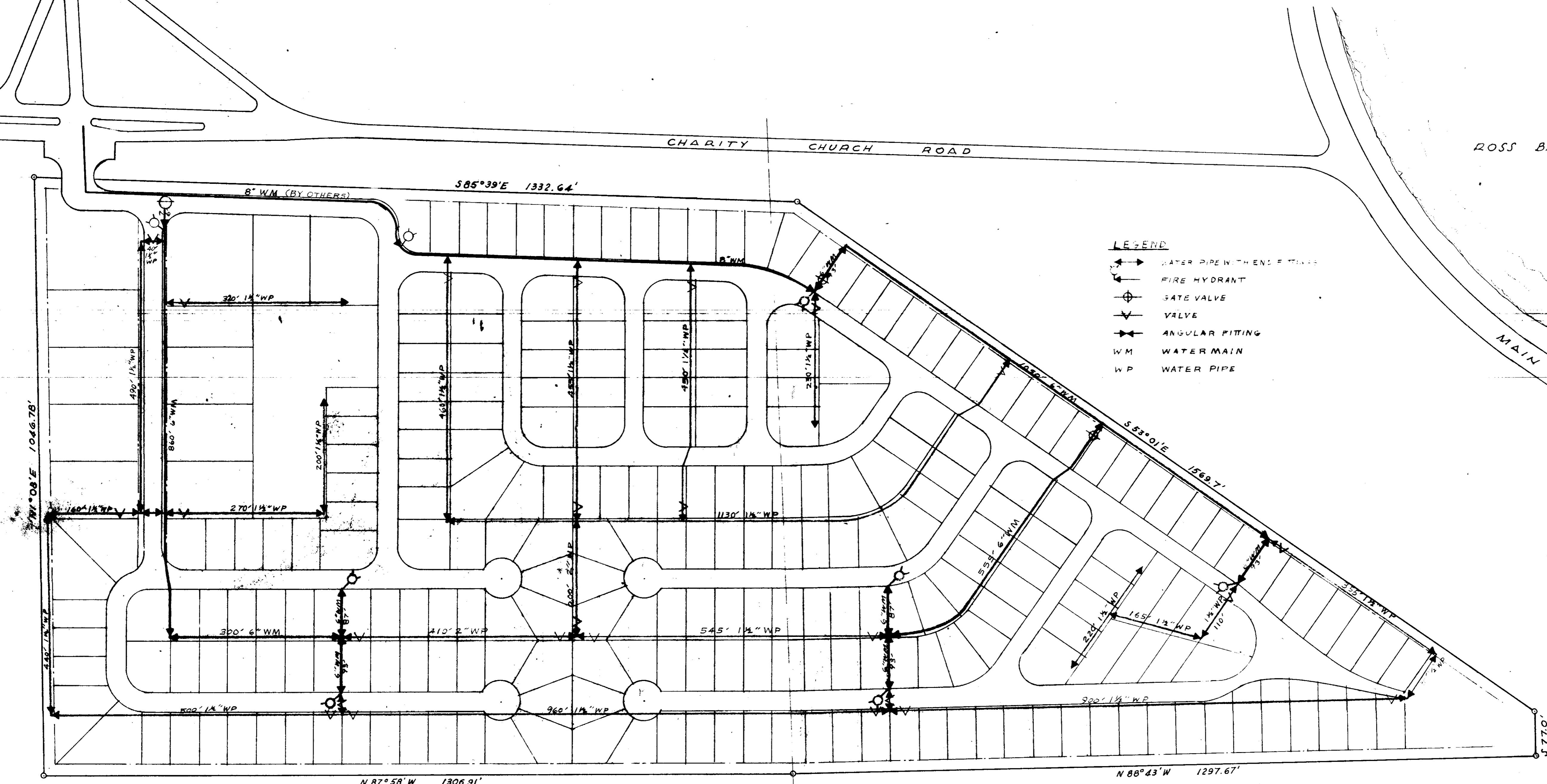
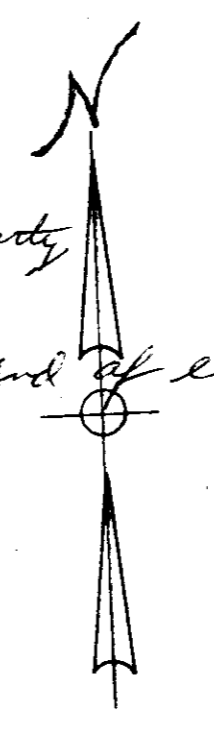
2

PLOT PLAN

SCALE: 1" = 100'



- Recommend for water
- 1- All cast iron pipe to be Class 27
  - 2- No line to be smaller than 4" cast iron
  - 3- All water lines to be installed on street property behind curb so meter can be set at property line on street property
  - 4- Developer will install cast iron water meter over end of each service line
  - 5- Service line to be 3/4" copper type K
  - 6- Corp. valve to be Mueller 3/4" - 15000
  - 7- Curb stops to be Mueller Model 14255
  - 8- Gate valve shall be Mueller A-2380-20 with cast iron valve boxes to correct length
  - 9- Fire Hydrants shall be Mueller A-24015 with 5 1/2" opening and fitted with natl. fire thread with a minimum 3' bump.
  - 10- All water service to be marked with W on curb of street



LEGEND

	WATER PIPE WITH END FITTING
	FIRE HYDRANT
	GATE VALVE
	VALVE
	ANGULAR FITTING
WM	WATER MAIN
WP	WATER PIPE

GENERAL NOTES

- There shall be a minimum separation of 5' between water and sewer lines.
- Water and sewer lines (except service lines) shall be located within 20' utility easement centered on property lines and as indicated on drawings.
- All 6" and 8" WM shall be Cast Iron Pipe.
- All 12" and 18" WP shall be PVC (Polyvinyl Chloride).

NOTE: CONTRACTOR SHALL COORDINATE LOCATION OF WATER LINES WITH OTHER UTILITY LINES AND DRAINAGE SYSTEM.

SEE DETAIL SHEET 12 FOR LOCATION OF OUTLET ON LOT.

SECTION 35, T7N, R2E  
SECTION 35, T7N, R2E

HARBOR VILLAGE MOBILE HOME SUBDIVISION  
IN MADISON COUNTY  
AT JACKSON, MISSISSIPPI

Philip Kantor Associates, Inc.  
Designers & Engineers MEMPHIS, TENN. 38117

8664 SHADY GLEN ROAD

DATE: 1/24/12	DRAWN BY: T.B.L.M.
REVISED: 2/29/12	APPROVED BY: [Signature]

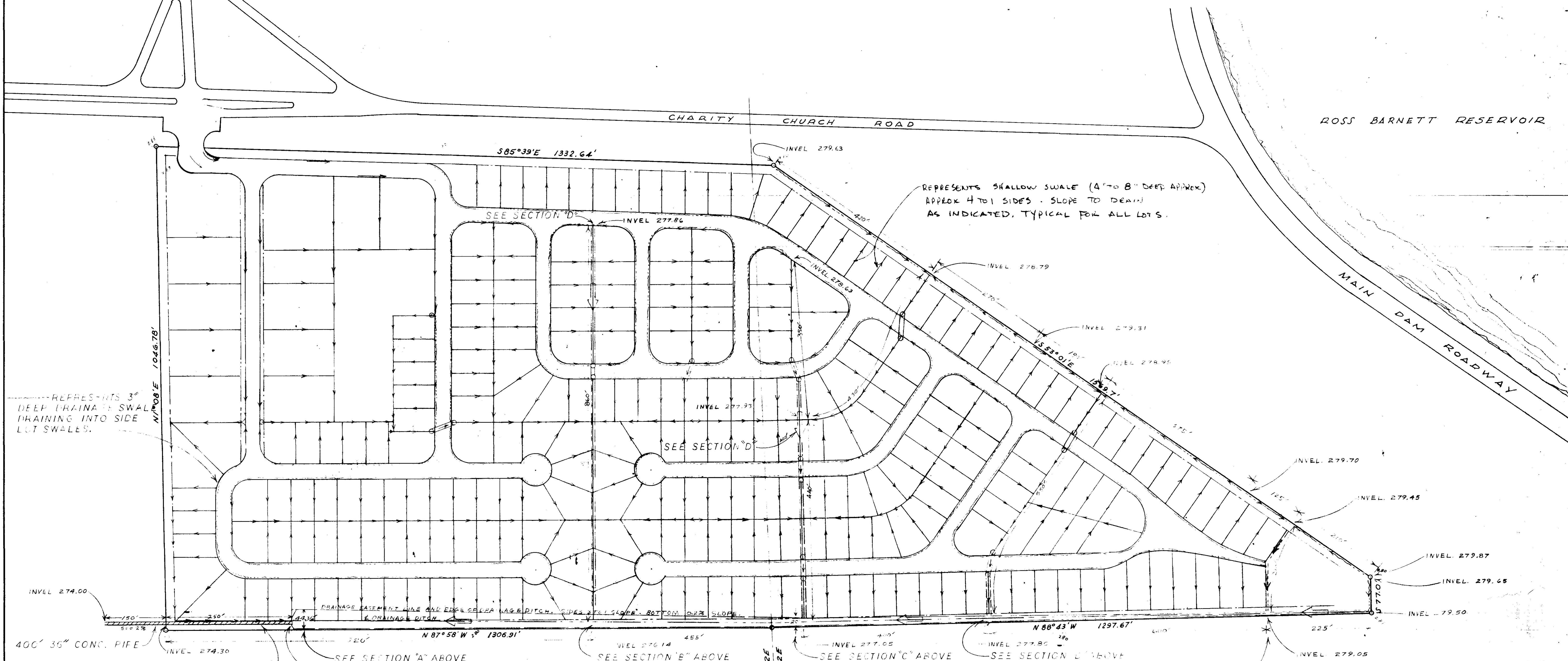
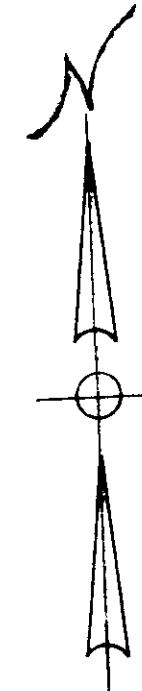
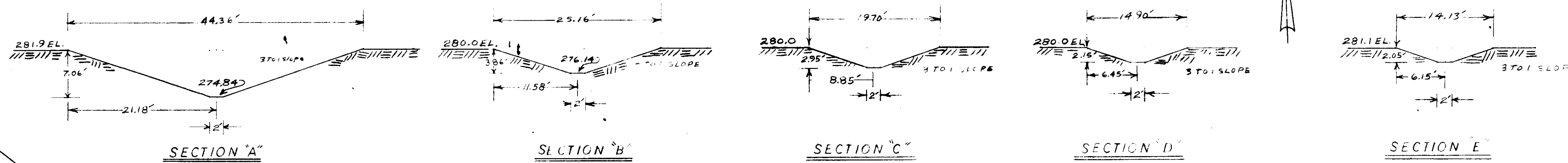
3

WATER MAIN AND SERVICE SYSTEM

SCALE: 1" = 100'







--- REPRESENTS 3" DEEP DRAINAGE SWALE DRAINING INTO SIDE LOT SWALES.

REPRESENTS SHALLOW SWALE (4" TO 8" DEEP APPROX) APPROX 4 TO 1 SIDES - SLOPE TO DRAIN AS INDICATED. TYPICAL FOR ALL LOTS.

400' 36" CONC. PIPE  
 DRAINAGE EASEMENT LINE AND EDGE OF GRADE DITCH. PIPES AT 1% SLOPE. BOTTOM 0.2% SLOPE.

SEE SECTION A ABOVE  
 SEE SECTION B ABOVE  
 SEE SECTION C ABOVE  
 SEE SECTION D ABOVE  
 SEE SECTION E ABOVE

ALL SIDE WALL SLOPES 3 TO 1 WITH 2" FLAT BOTTOM.  
 ALL DRAINAGE TITCHED SLOPE 0.2%  
 ALL INVEL. SUBJECT TO FINAL DETERMINATION IN FIELD.  
 ALL DRAINAGE SLOPES SEEDED.

*Philip Kantor*

SCALE: 1" = 100'

HARBOR VILLAGE MOBILE HOME SUBDIVISION IN MADISON COUNTY AT JACKSON, MISSISSIPPI	
Philip Kantor Associates, Inc. Designers & Engineers MEMPHIS, TENN. 38117	
DATE 2/15/72	DRAWN BY T.H.L.M.
REVISED 2/24/72	APPROVED BY
5	
STORM DRAINAGE PLAN	

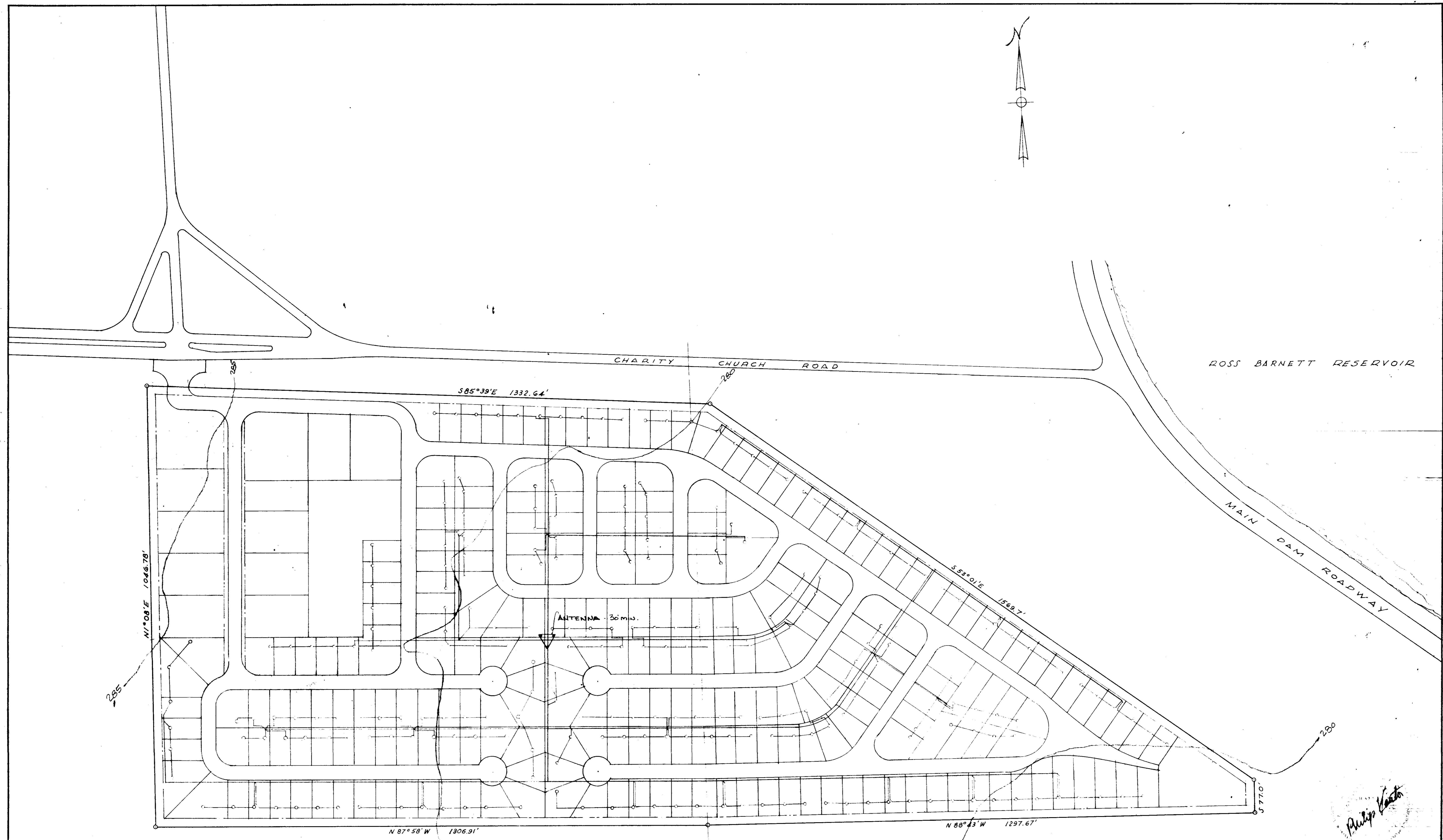
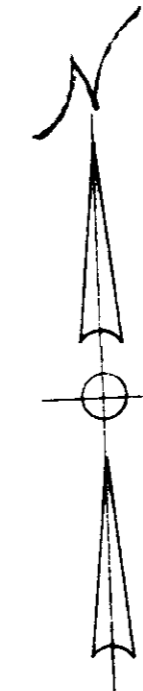












NOTE: CONTRACTOR SHALL COORDINATE LOCATION OF TELEVISION CABLE WITH OTHER UTILITY LINES AND DRAINAGE SYSTEM.

SEE DETAIL SHEET 12 FOR LOCATION OF OUTLET ON LOT.

SECTION 33, T7N, R2E  
SECTION 34, T7N, R2E

*Philip Kantor*

HARBOR VILLAGE MOBILE HOME SUBDIVISION IN MADISON COUNTY AT JACKSON, MISSISSIPPI	
Philip Kantor Associates, Inc. Designers & Engineers MEMPHIS, TENN. 38117	
DATE 2/10/72	DRAWN BY T.B.L.M.
REVISED	APPROVED BY
TELEVISION SYSTEM	

SCALE: 1" = 100'

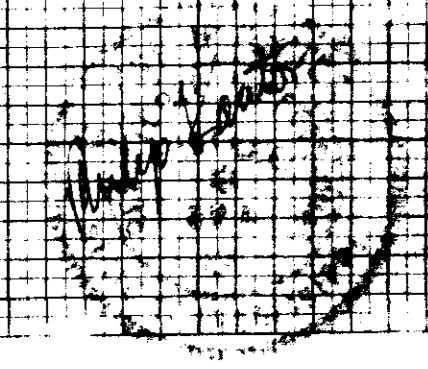
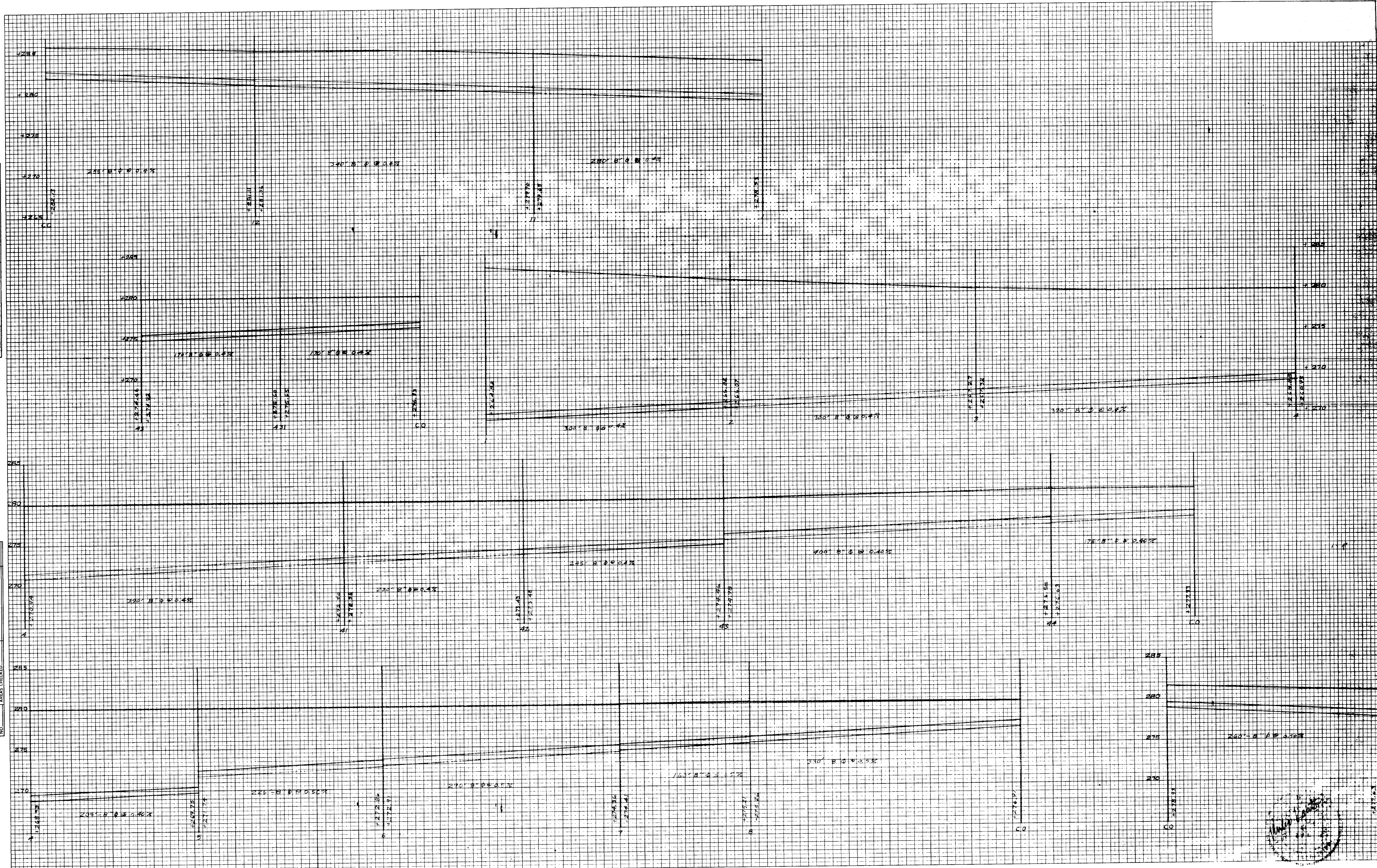




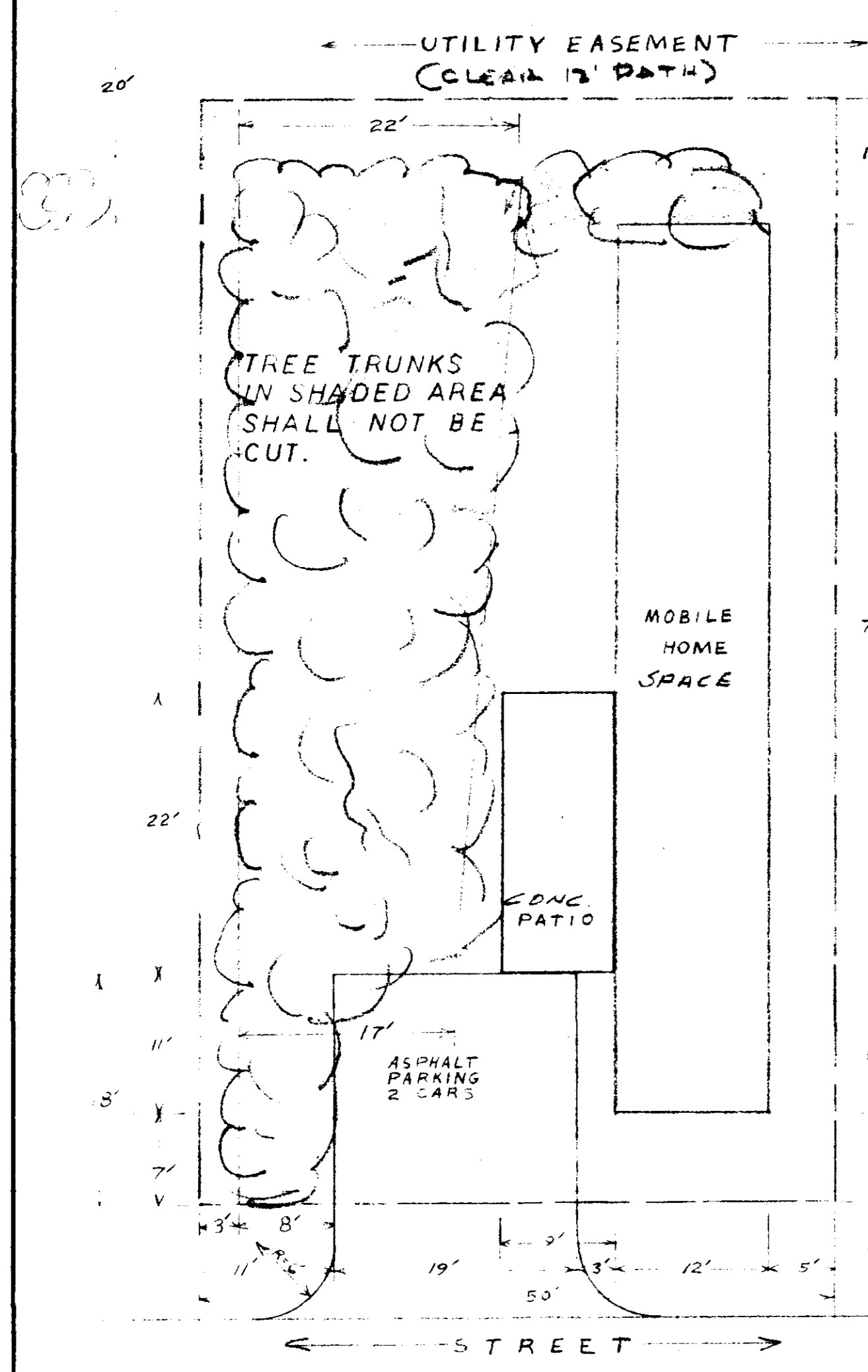


FINAL SURVEY  
 SURVEYED, PLOTTED, NOTE BOOK, TEMPLATE, AREAS CHECKED.  
 NO. \_\_\_\_\_ BY \_\_\_\_\_ DATE \_\_\_\_\_

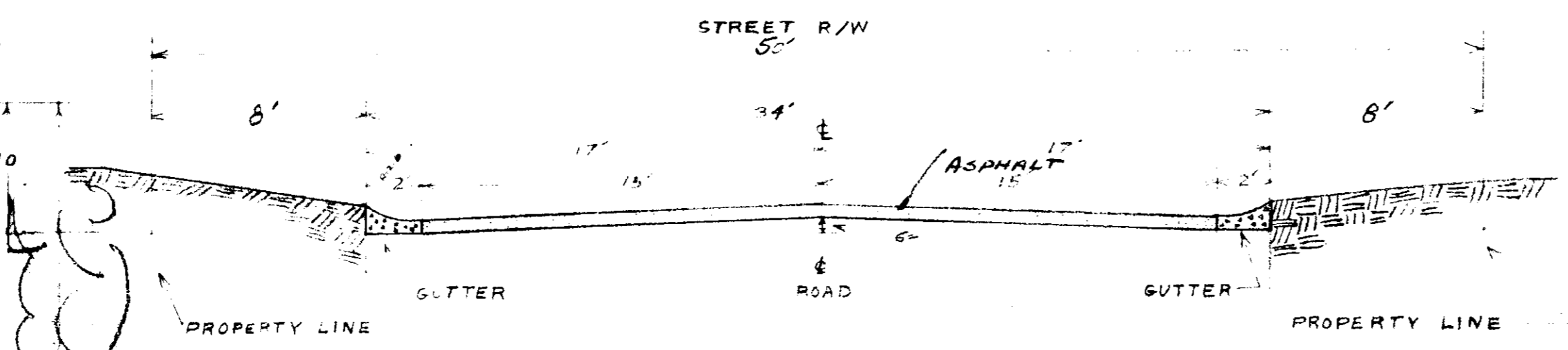
ORIGINAL SURVEY  
 SURVEYED, PLOTTED, NOTE BOOK, TEMPLATE, AREAS CHECKED.  
 NO. \_\_\_\_\_ BY \_\_\_\_\_ DATE \_\_\_\_\_



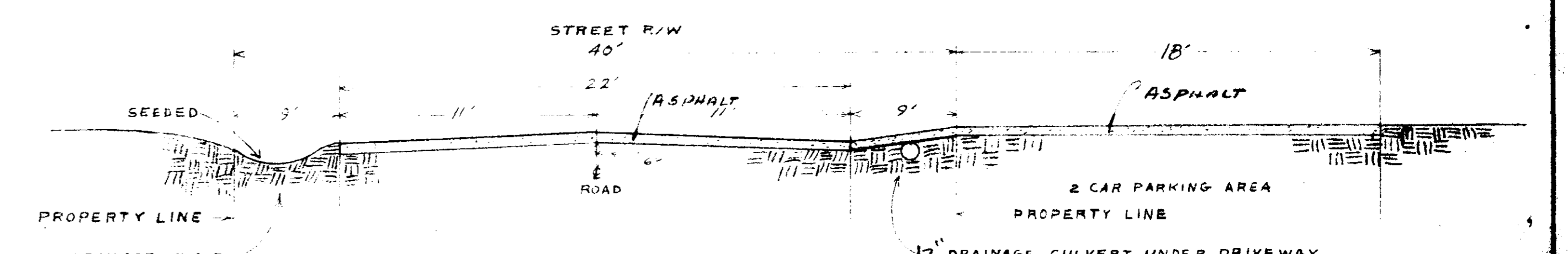
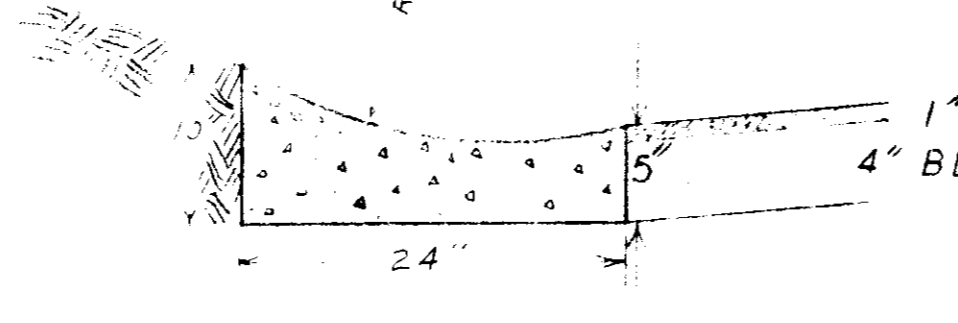




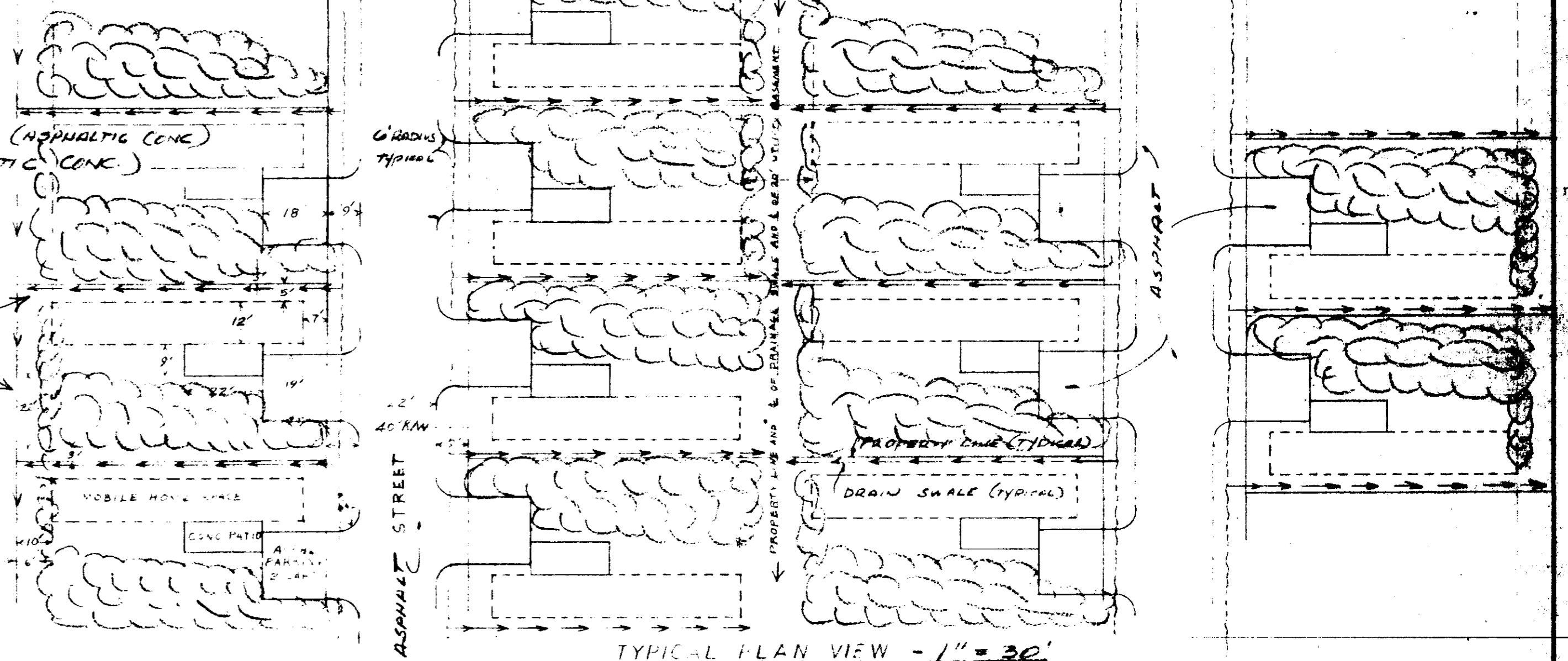
TYPICAL MOBILE HOME LOT  
1" = 10'



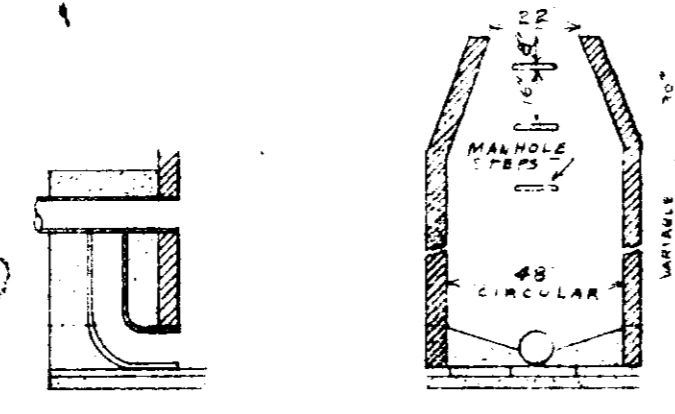
COMMERCIAL AREA  
TYPICAL ROAD SECTION



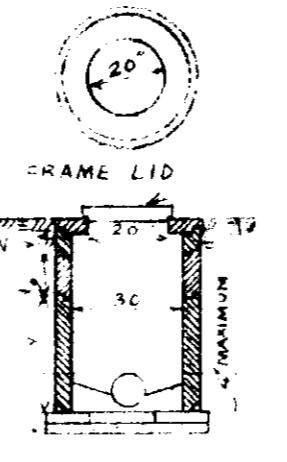
RESIDENTIAL AREA  
SPECIAL ROAD AND PARKING SECTION



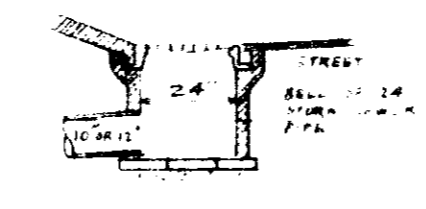
◇ TREE TRUNK IN SHADED AREA SHALL NOT BE CUT.  
◇ DRAINAGE SWALES & GUTTER LINES SHALL START 3" DEEP AND 0.5% SLOPE (5" IN 90')  
SEE SHEET 14 FOR ADDITIONAL DETAILS.



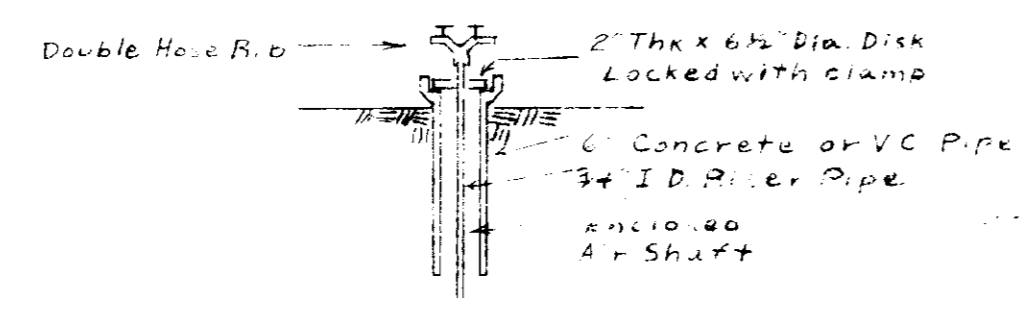
DROP MH & MANHOLE  
FOR SEWER OVER 4' DEEP  
MATERIAL: BRICK, CONCRETE BLOCK, CONCRETE PIPE OR OTHER MATERIAL APPROVED BY GOVERNING AUTHORITY.



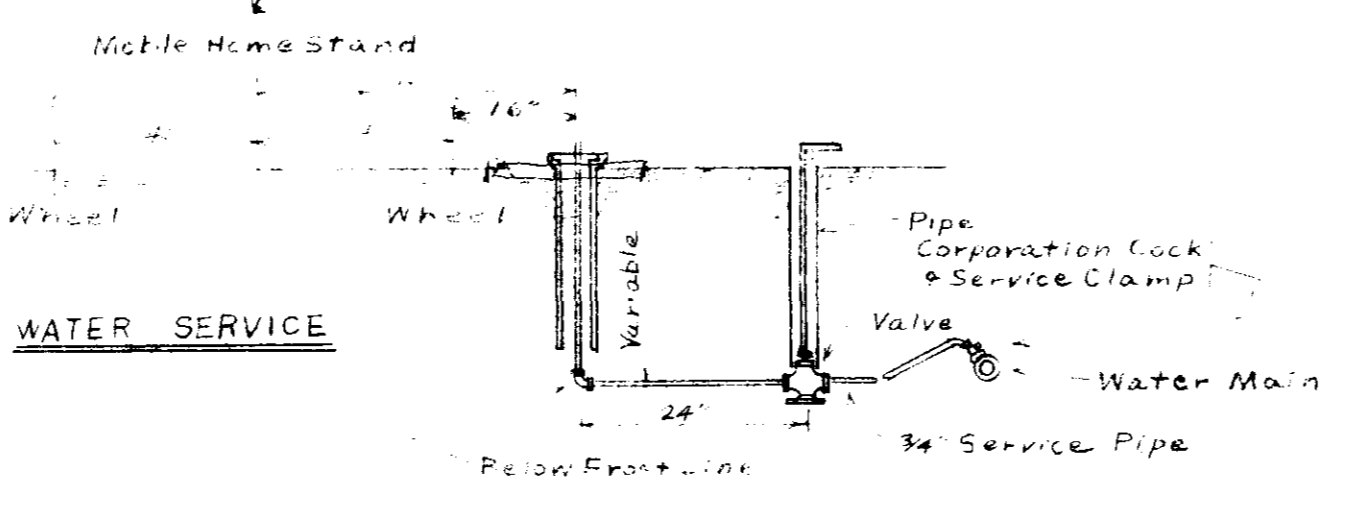
MANHOLE  
FOR SEWER 4' DEEP OR LESS  
MATERIAL: PRECAST CONCRETE PIPE



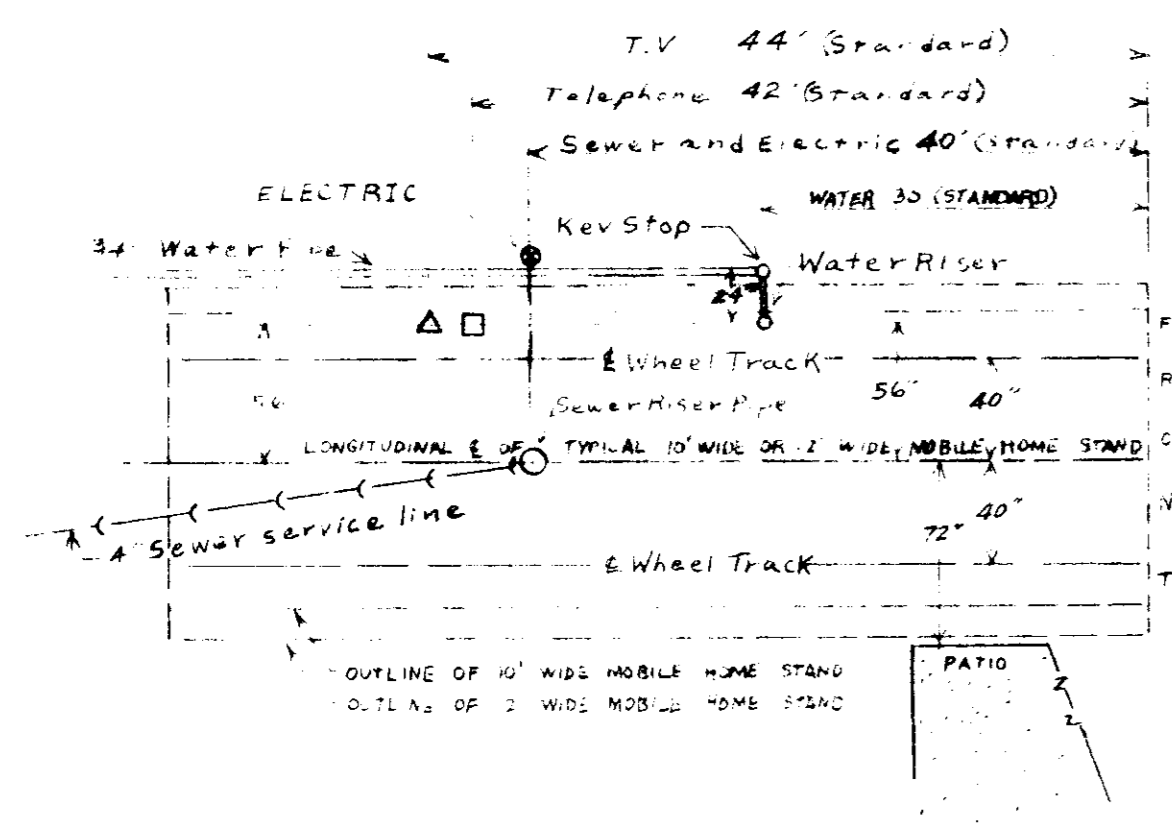
INLET FOR STORM SEWER



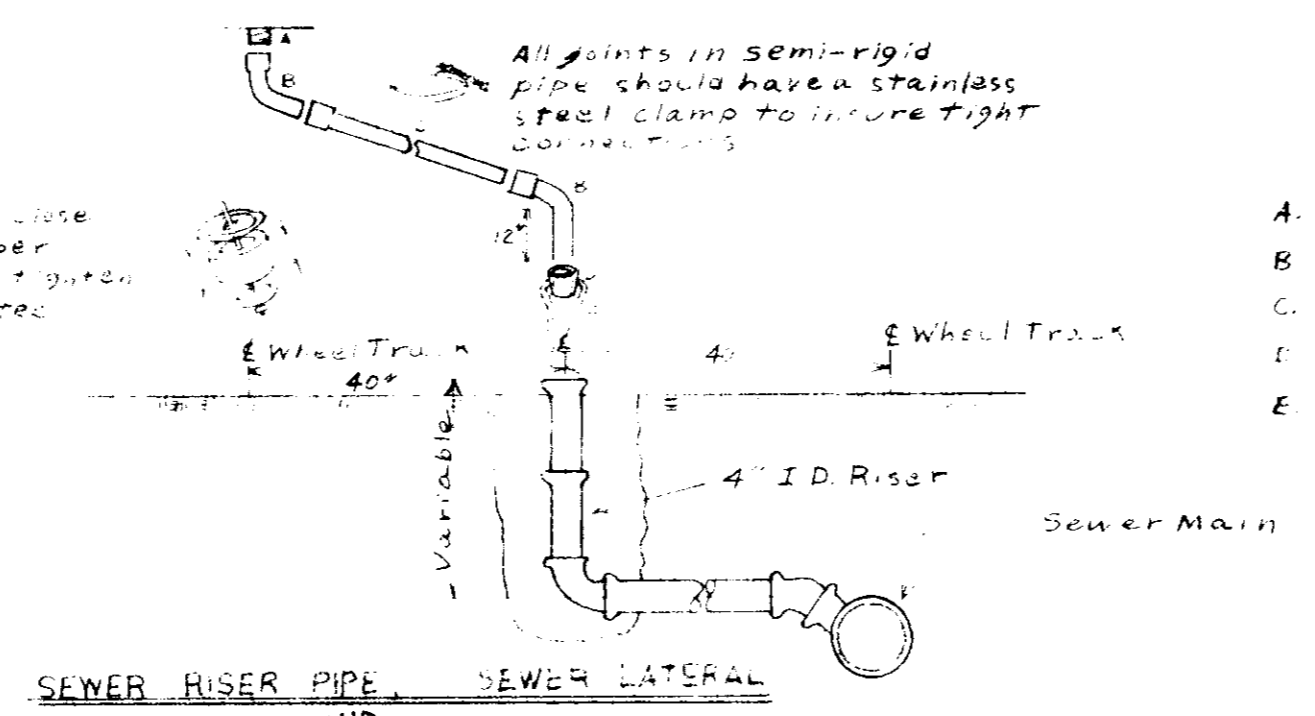
DETAIL OF WATER RISER PIPE



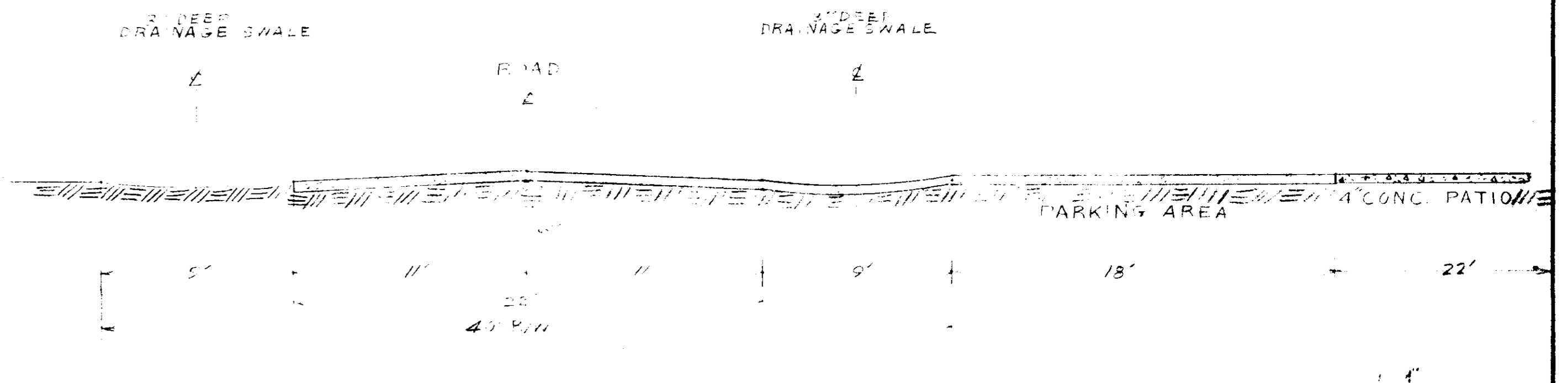
WATER SERVICE



LOCATION OF UTILITIES



SEWER RISER PIPE AND SEWER CONNECTION DETAIL



RESIDENTIAL AREA  
TYPICAL ROAD AND PARKING SECTION



HARBOR VILLAGE MOBILE HOME SUBDIV.  
IN MADISON COUNTY  
AT JACKSON, MISSISSIPPI

Philip Kantor Associates, Inc.

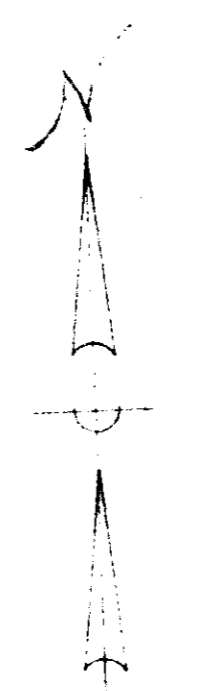
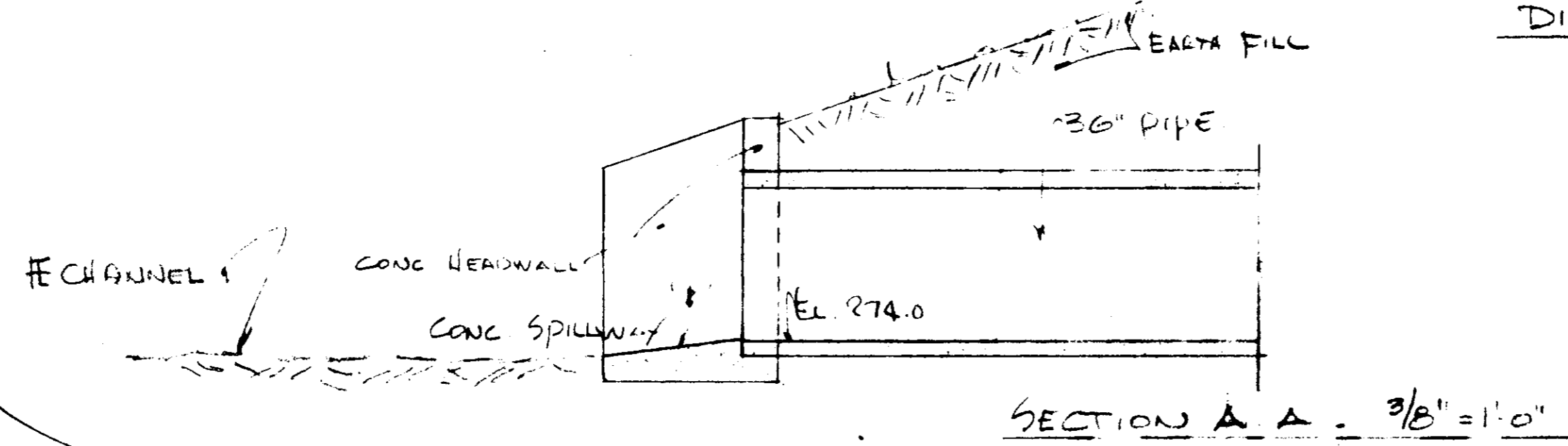
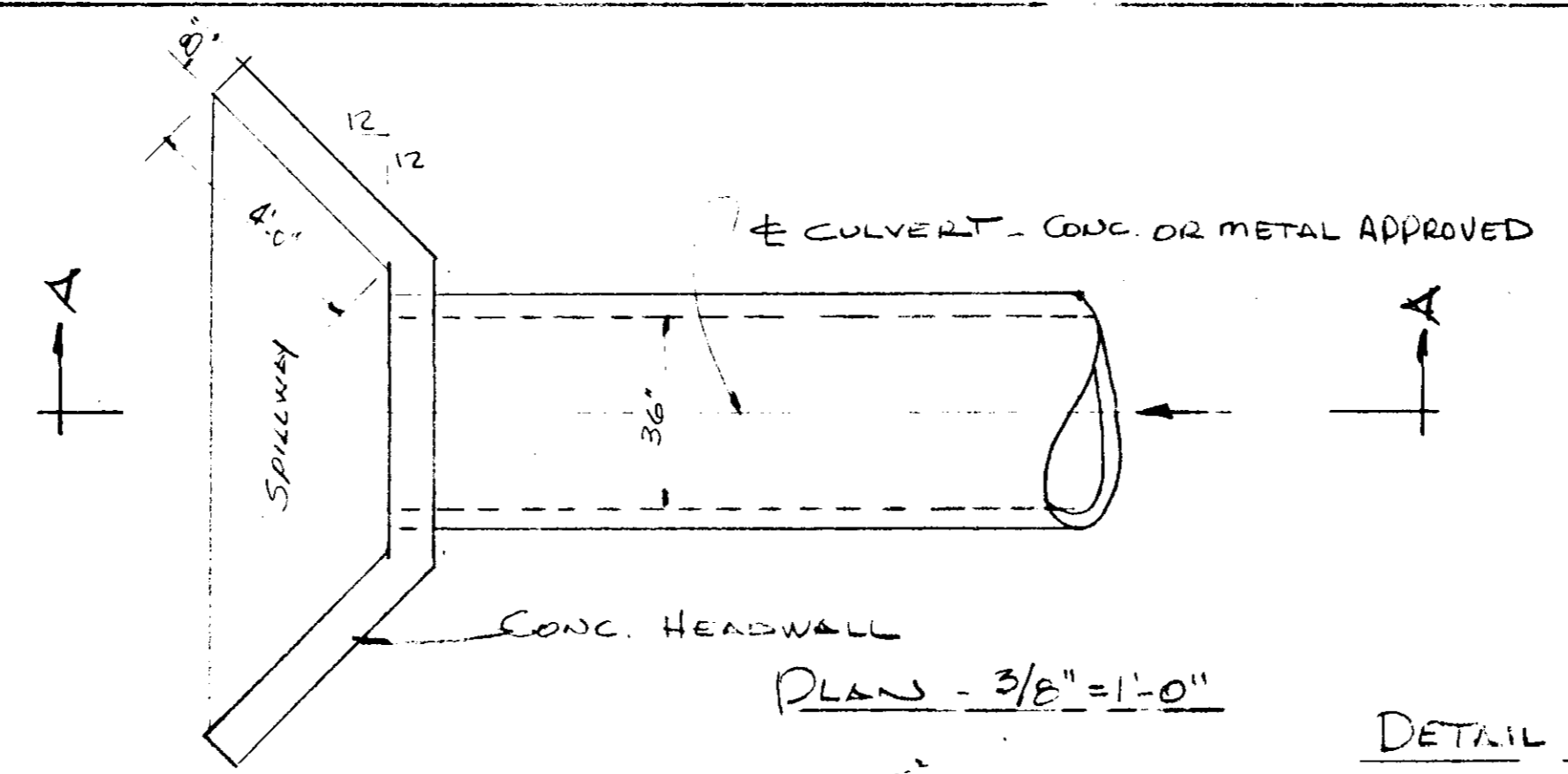
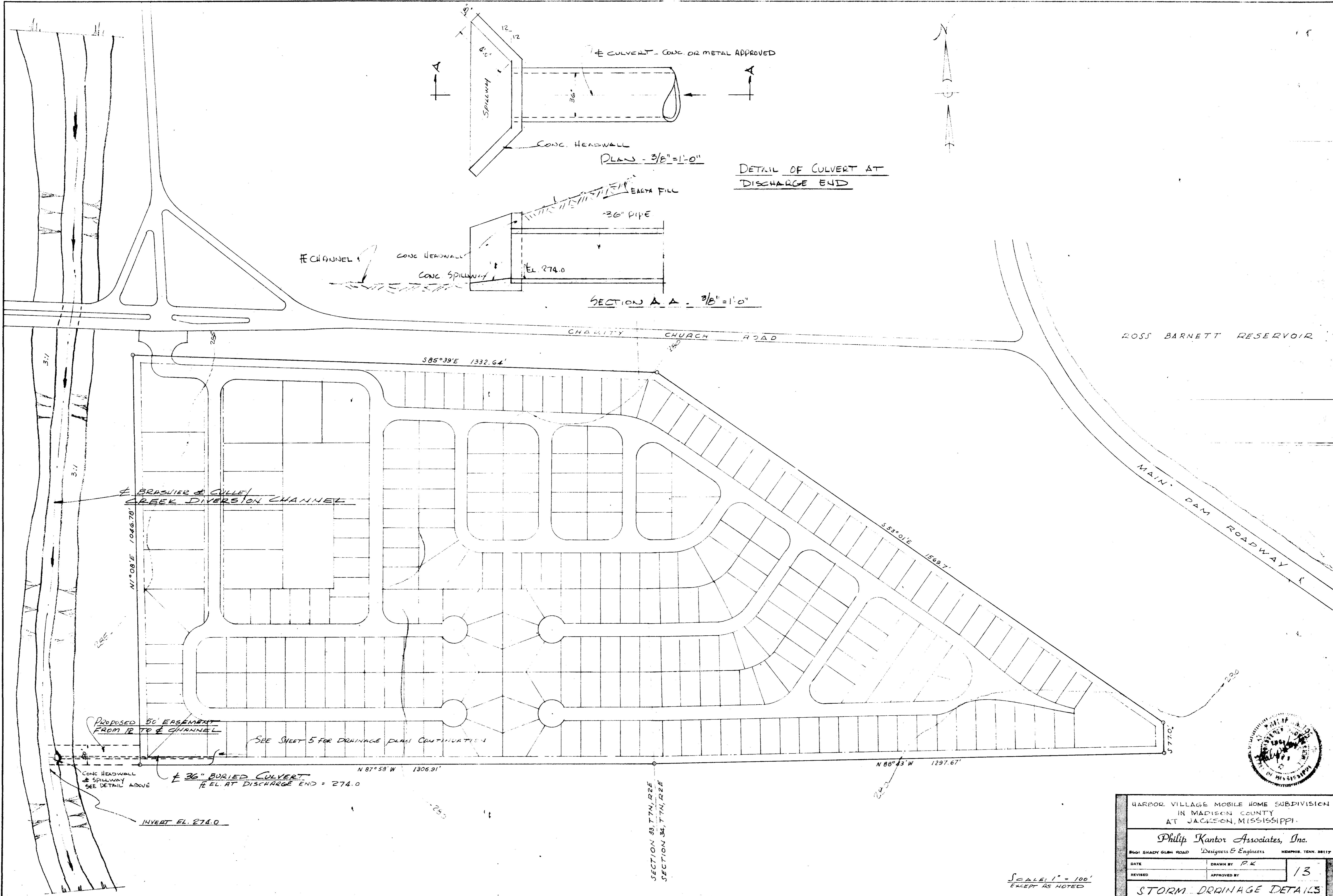
5261 SHADY GLEN ROAD MEMPHIS, TENNESSEE 901/683-5619

DATE 2/7/72 DRAWN BY T.B.L.M.  
REVISED 3/1/72 APPROVED BY

12

TYPICAL DETAILS





HARBOR VILLAGE MOBILE HOME SUBDIVISION IN MADISON COUNTY AT JACKSON, MISSISSIPPI	
Philip Kantor Associates, Inc. Designers & Engineers MEMPHIS, TENN. 38117	
DATE	DRAWN BY P.K.
REVISED	APPROVED BY
13	
STORM DRAINAGE DETAILS	

SCALE: 1" = 100'  
EXCEPT AS NOTED

SECTION 33, T7N, R2E  
SECTION 34, T7N, R2E

SEE SHEET 5 FOR DRAINAGE PLAN CONTINUATION

PROPOSED 50' EASEMENT FROM R TO C CHANNEL

CONC HEADWALL & SPILLWAY SEE DETAIL ABOVE

INVERT EL. 274.0

36" BURIED CULVERT  
E.L. AT DISCHARGE END = 274.0

BRASHER & CULLEY CREEK DIVERSION CHANNEL

CHARITY CHURCH ROAD

ROSS BARNETT RESERVOIR

MAIN DAM ROADWAY

S85°39'E 1332.64'

S53°01'E 1569.7'

N1°08'E 1046.78'

N 87°58' W 1306.91'

N 88°43' W 1297.67'

3:7

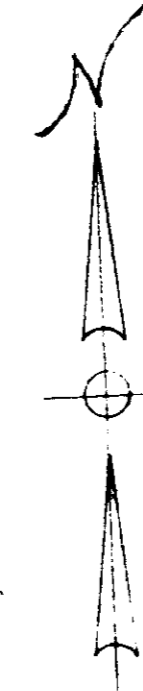
3:7

255

250

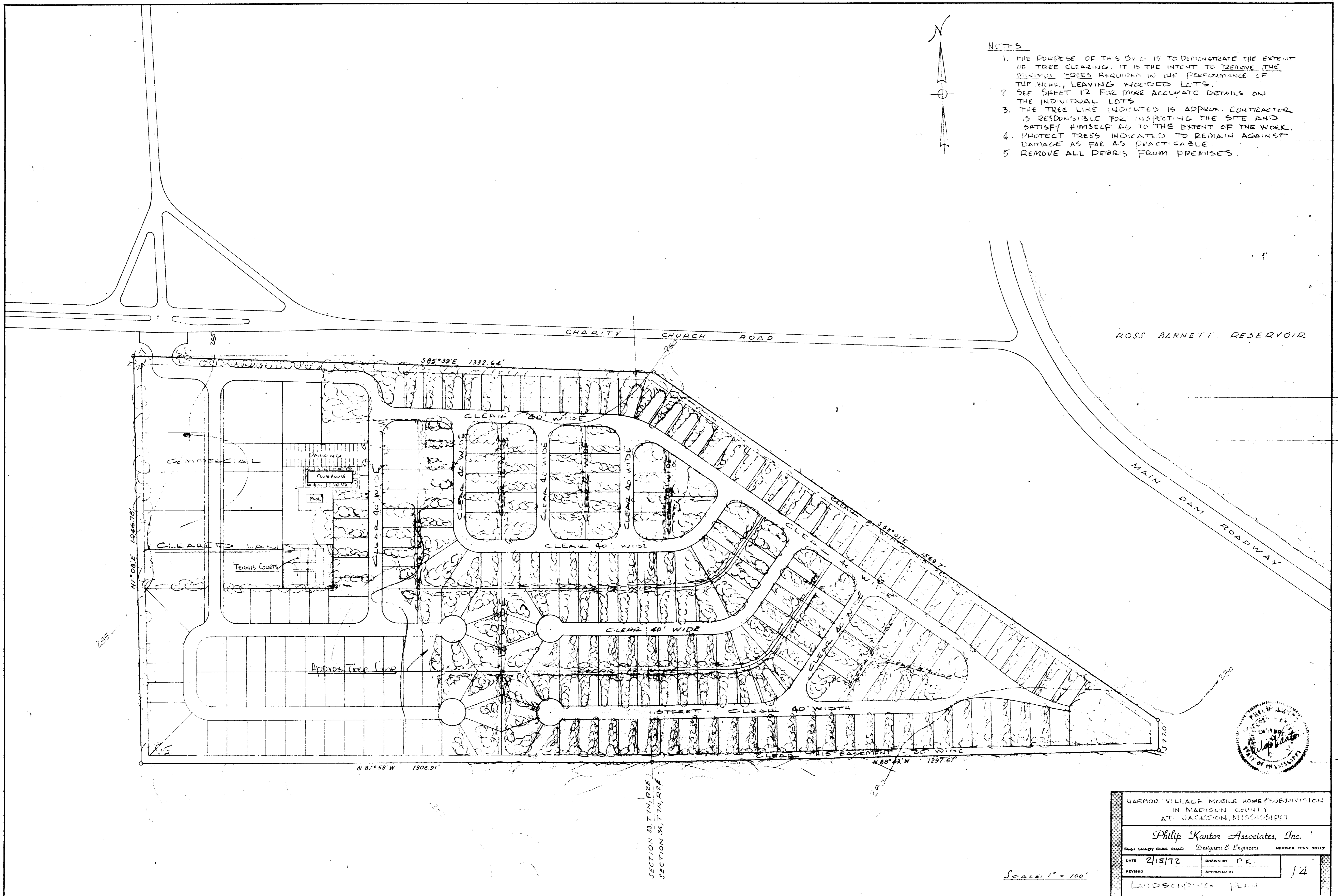
277.0

255



NOTES

1. THE PURPOSE OF THIS DRAWING IS TO DEMONSTRATE THE EXTENT OF TREE CLEARING. IT IS THE INTENT TO REMOVE THE MINIMUM TREES REQUIRED IN THE PERFORMANCE OF THE WORK, LEAVING WOODED LOTS.
2. SEE SHEET 12 FOR MORE ACCURATE DETAILS ON THE INDIVIDUAL LOTS.
3. THE TREE LINE INDICATED IS APPROX. CONTRACTOR IS RESPONSIBLE FOR INSPECTING THE SITE AND SATISFY HIMSELF AS TO THE EXTENT OF THE WORK.
4. PROTECT TREES INDICATED TO REMAIN AGAINST DAMAGE AS FAR AS PRACTICABLE.
5. REMOVE ALL DEBRIS FROM PREMISES.



HARBOR VILLAGE MOBILE HOME SUBDIVISION IN MADISON COUNTY AT JACKSON, MISSISSIPPI	
Philip Kantor Associates, Inc. Designers & Engineers MEMPHIS, TENN. 38117	
DATE 2/15/72	DRAWN BY P.K.
REVISED	APPROVED BY
LANDSCAPING PLAN	

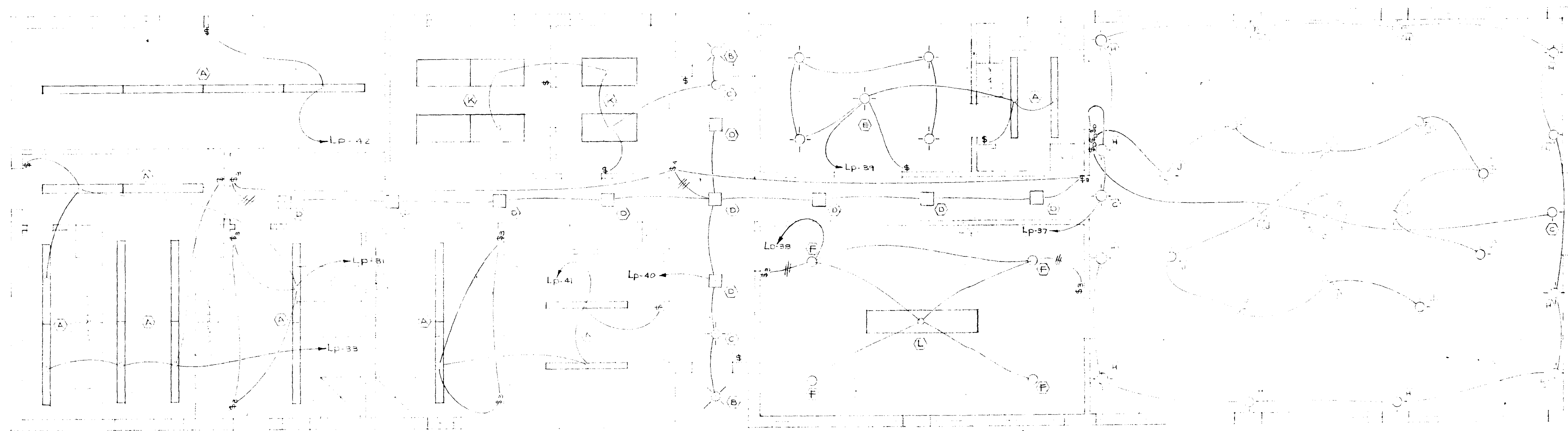
SCALE: 1" = 100'

SECTION 33, T7N, R2E  
SECTION 34, T7N, R2E







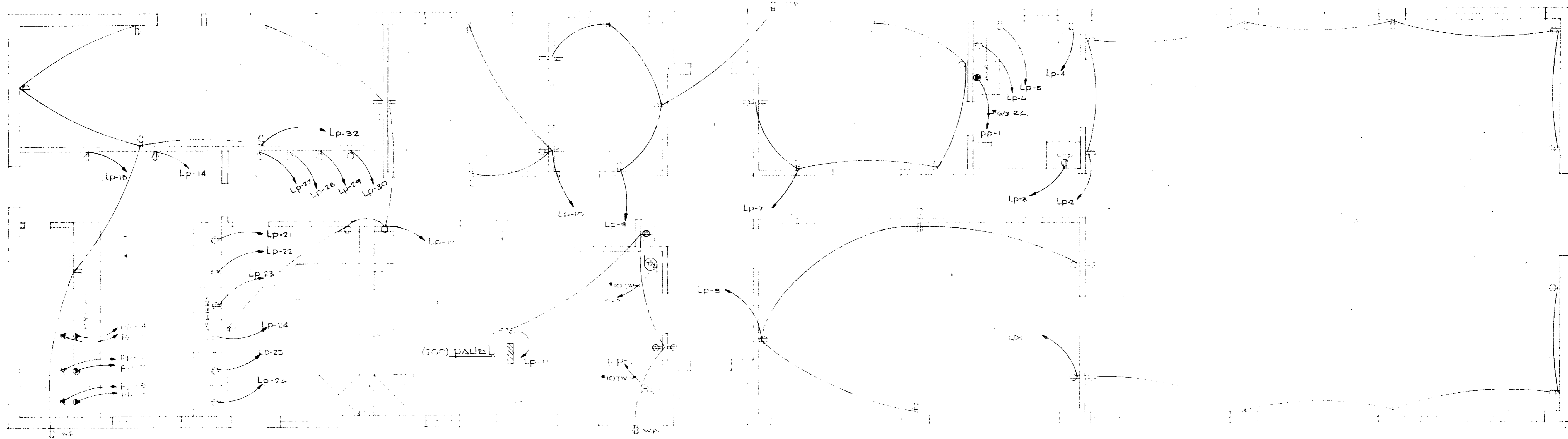



SCALE: 1/4" = 1'-0"



<b>HARBOR VILLAGE</b>	
<b>JACKSON, MISSISSIPPI</b>	
Philip Kinton Associates, Inc.	
3601 Shady Glen Rd. Designers & Engineers	
DATE: 2/15/72	DRAWN BY:
REVISED:	APPROVED BY:
<b>LIGHTING PLAN</b>	





  
 UNDERGROUND SERVICE ENTRANCE  
 200 AMP 3Φ 4V

NOTE  
 ALL WIRING TO BE #12 AWG UNLESS  
 NOTED OTHERWISE



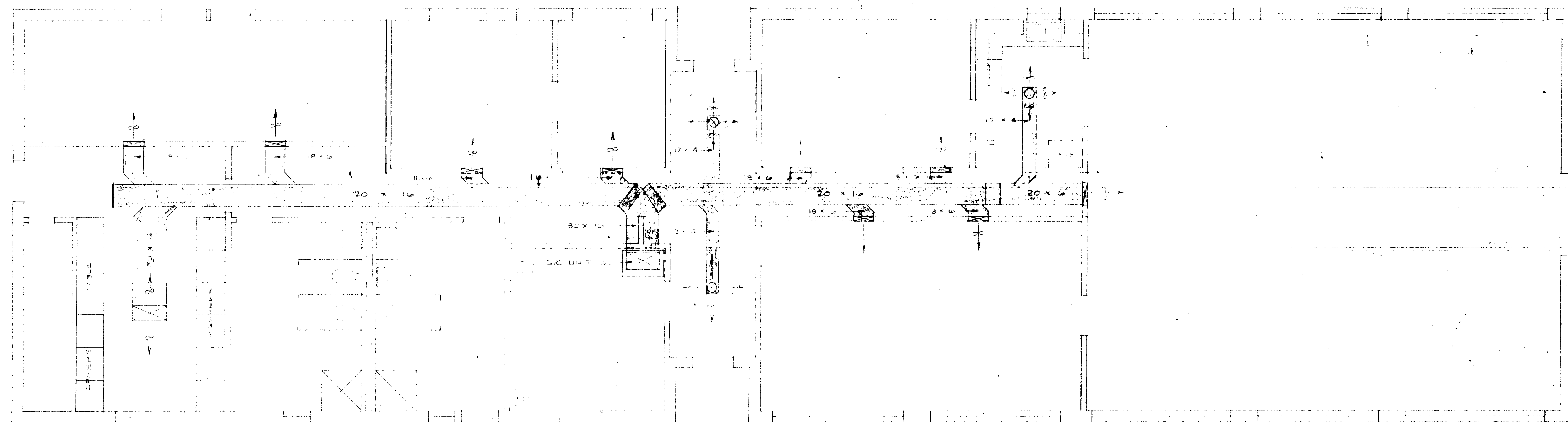
<b>HARBOR VILLAGE</b>	
<b>JACKSON — MISSISSIPPI</b>	
<i>Philip Kantor Associates, Inc.</i>	
<small>1604 Shady Glen Rd. Designers &amp; Engineers Memphis, Tenn. 38117</small>	
DATE <u>7/10/72</u>	DRAWN BY <u>K.L.</u>
REVISED	APPROVED BY <u>T.T.</u>
<b>POWER PLAN</b>	

SCALE: 1/4"=1'-0"









<b>HARBOR VILLAGE</b>	
<b>JACKSON — MISSISSIPPI</b>	
<i>Philip Kuntz Associates, Inc.</i>	
3601 Shady Glen Rd. Designers — Engineers — Memphis, Tenn.	
DATE <i>2/10/77</i>	DRAWN BY <i>K.L.</i>
REVIEWED	APPROVED BY
<b>H. V. A. C.</b>	

SCALE: 1/4" = 1'-0"