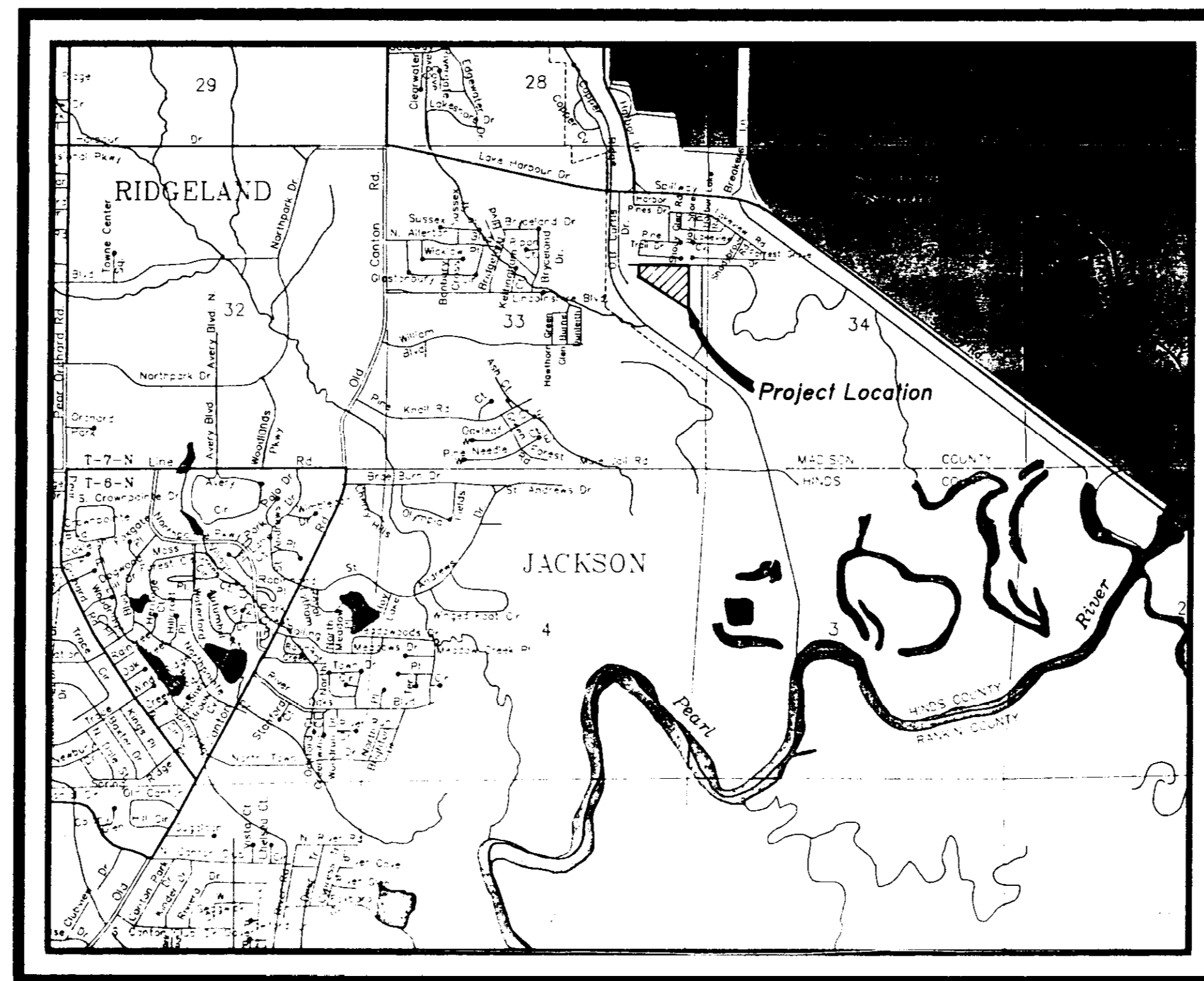


**CONSTRUCTION PLANS FOR THE DEVELOPMENT OF
HARBOR VILLAGE, PART V
BY HOMEWOOD MANOR ENTERPRISES, INC.
MADISON COUNTY, MISSISSIPPI**



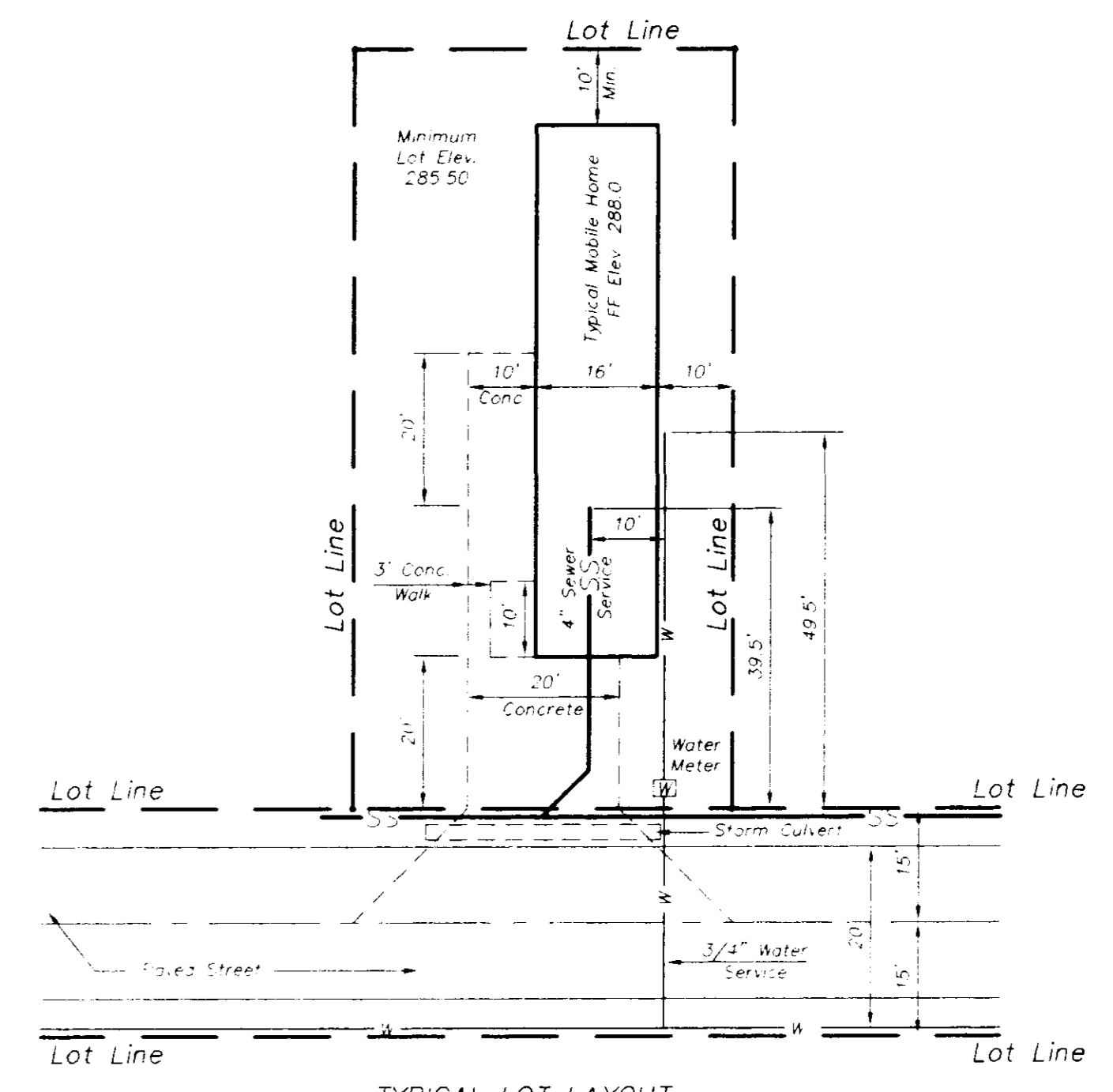
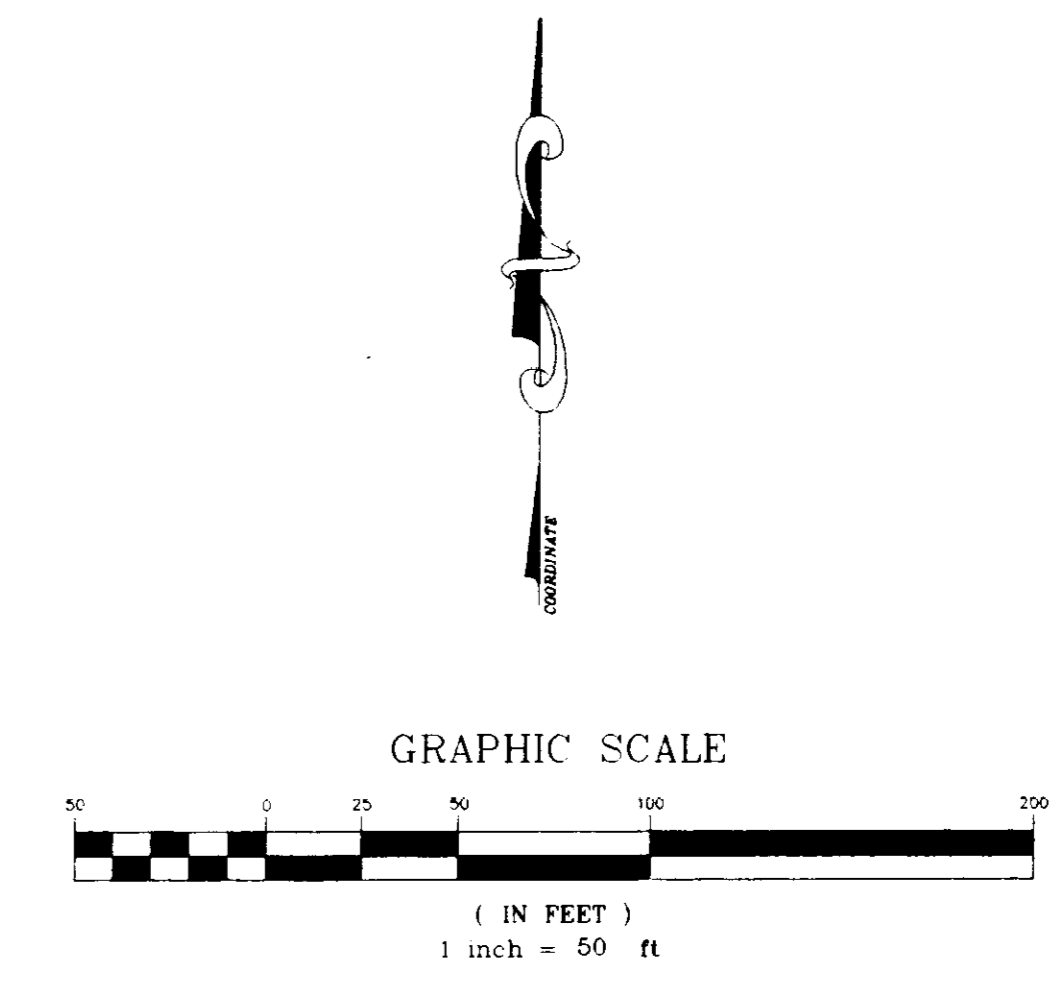
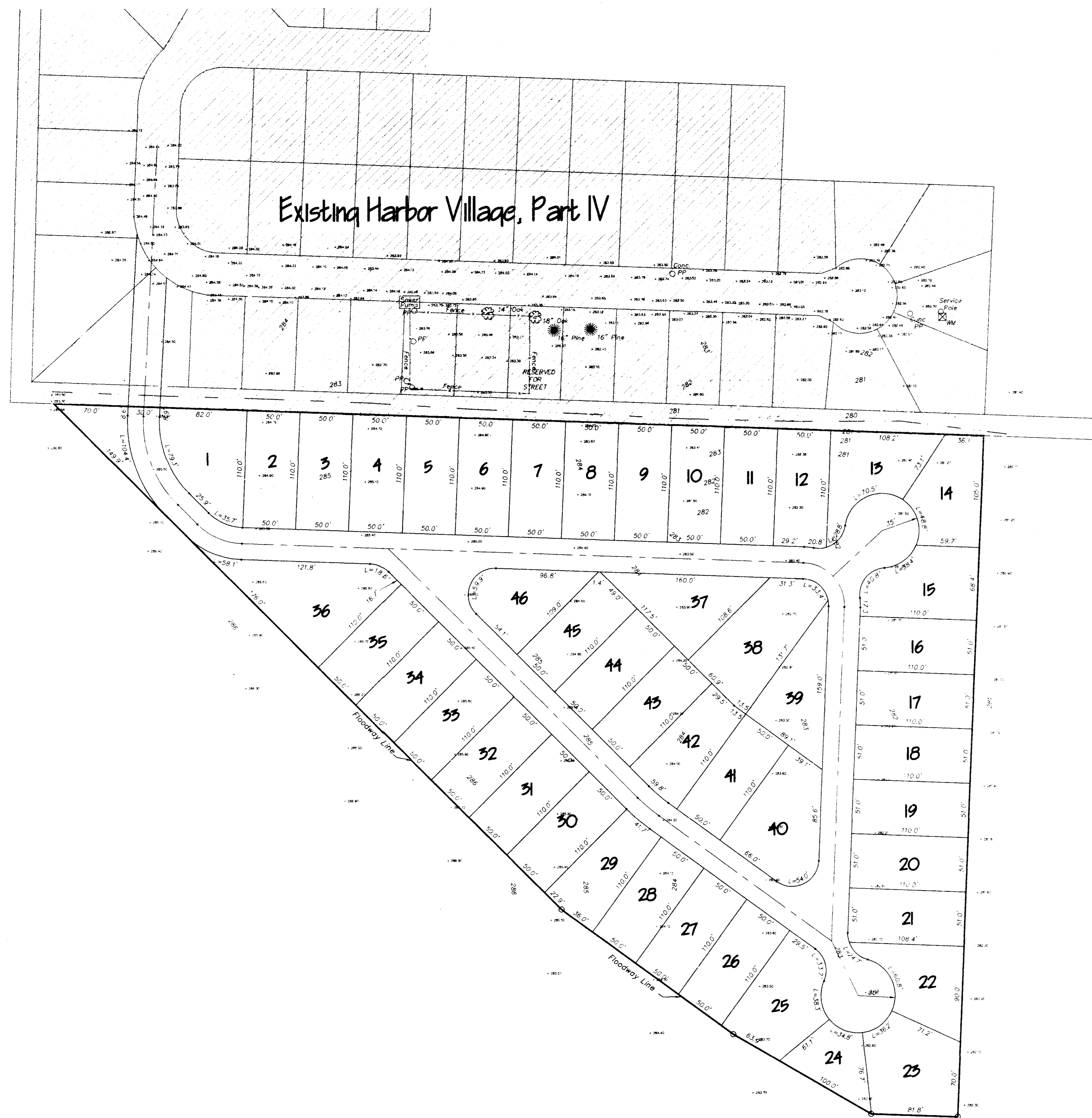
**VICINITY MAP
NOVEMBER, 1994**

See Feb. 3
Ben 2-6-95

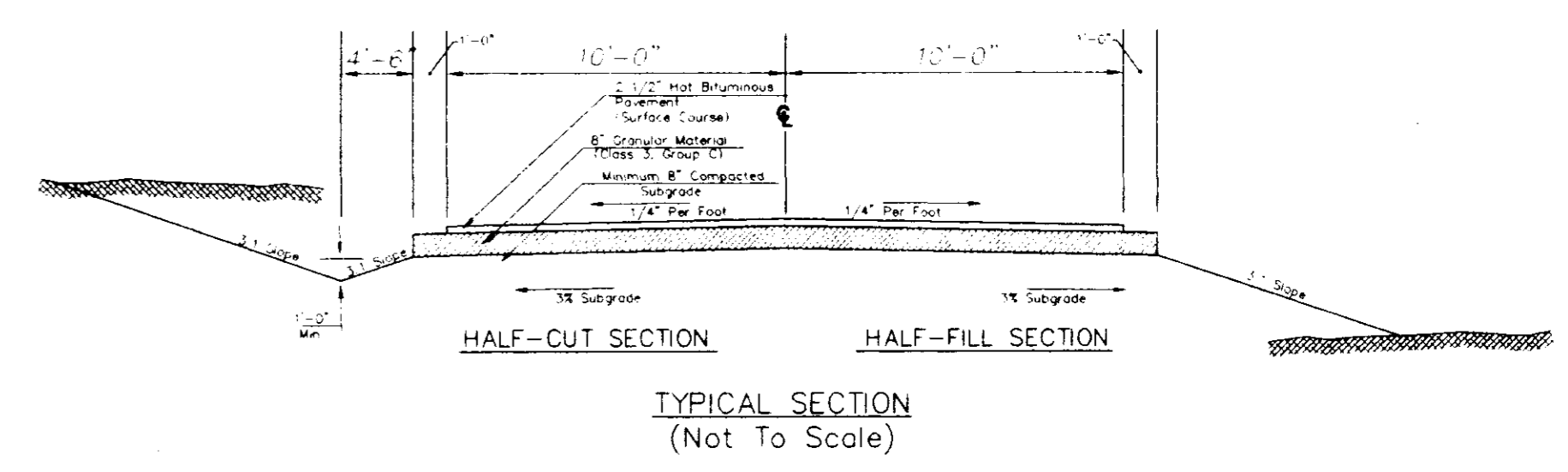
NEEL-SCHAFFER, INC.
Engineers • Planners
Jackson, Mississippi

PWP 00813

Date
CHARLES A. LOT, JR., P.E.
Ms. License No. 0043



TYPICAL LOT LAYOUT
Scale 1"=20'

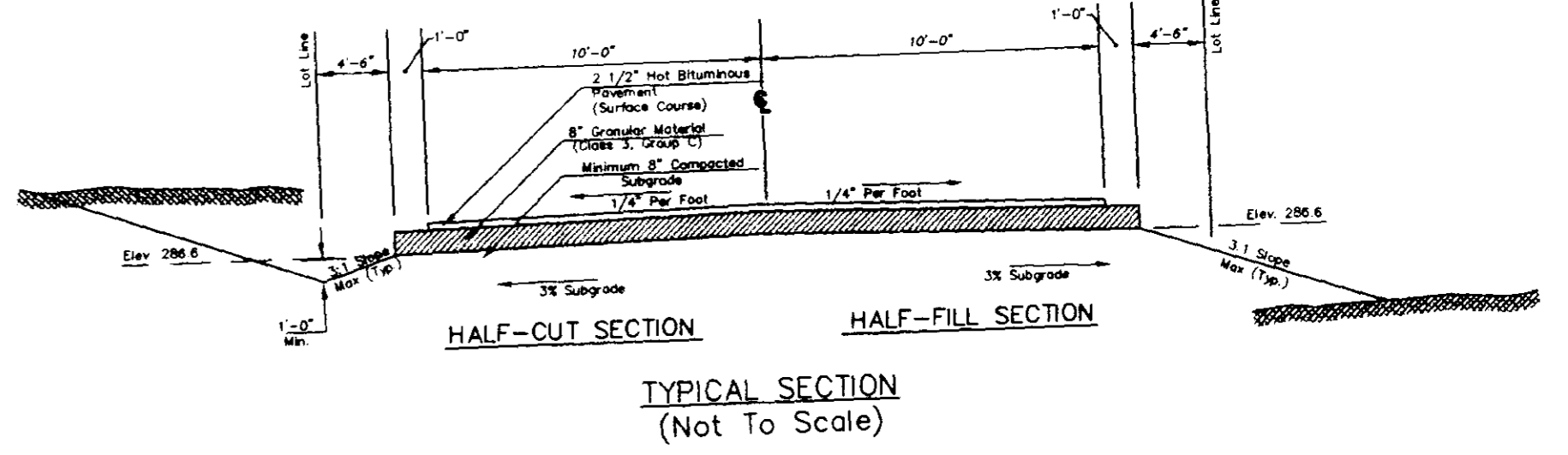
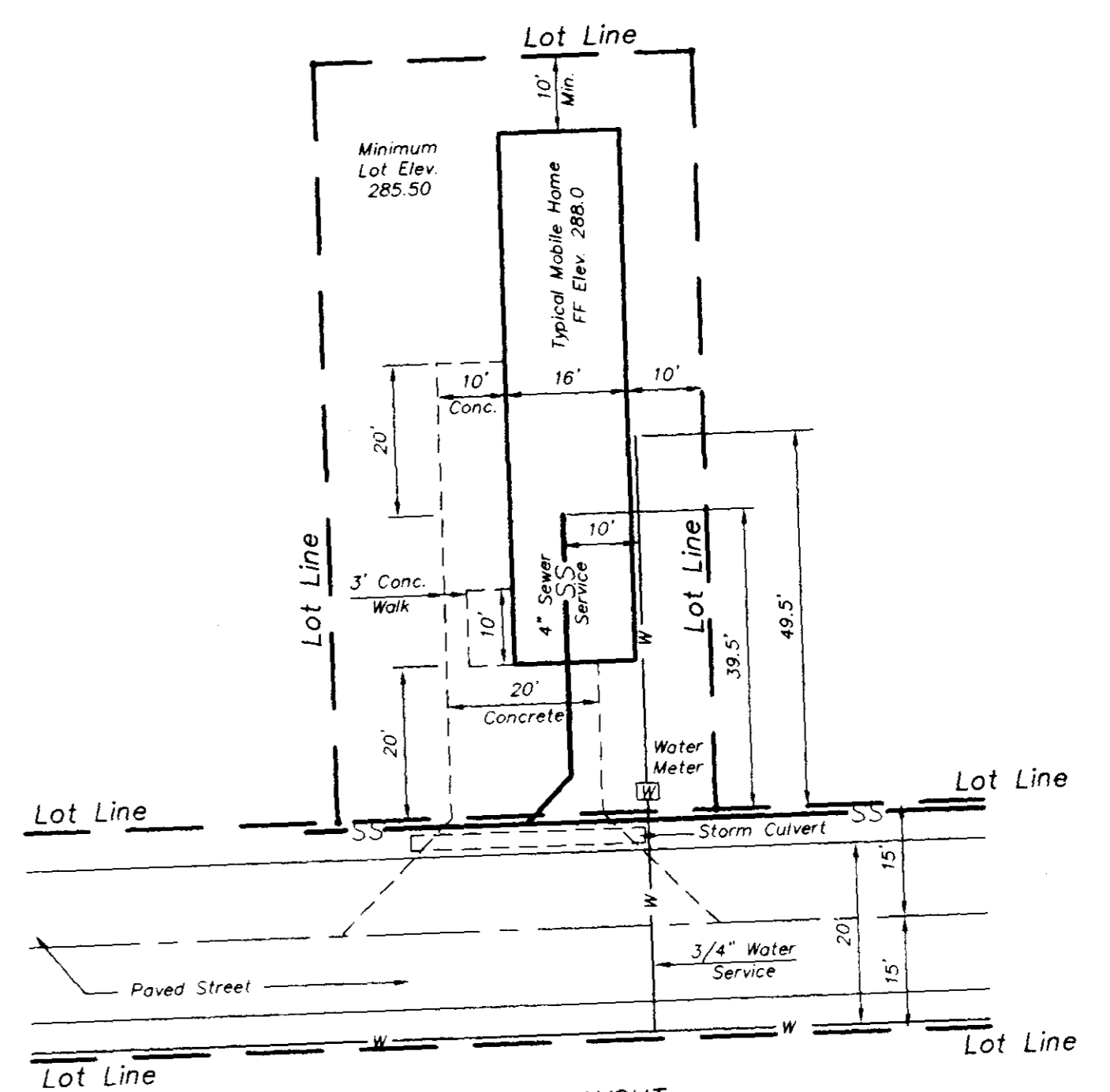
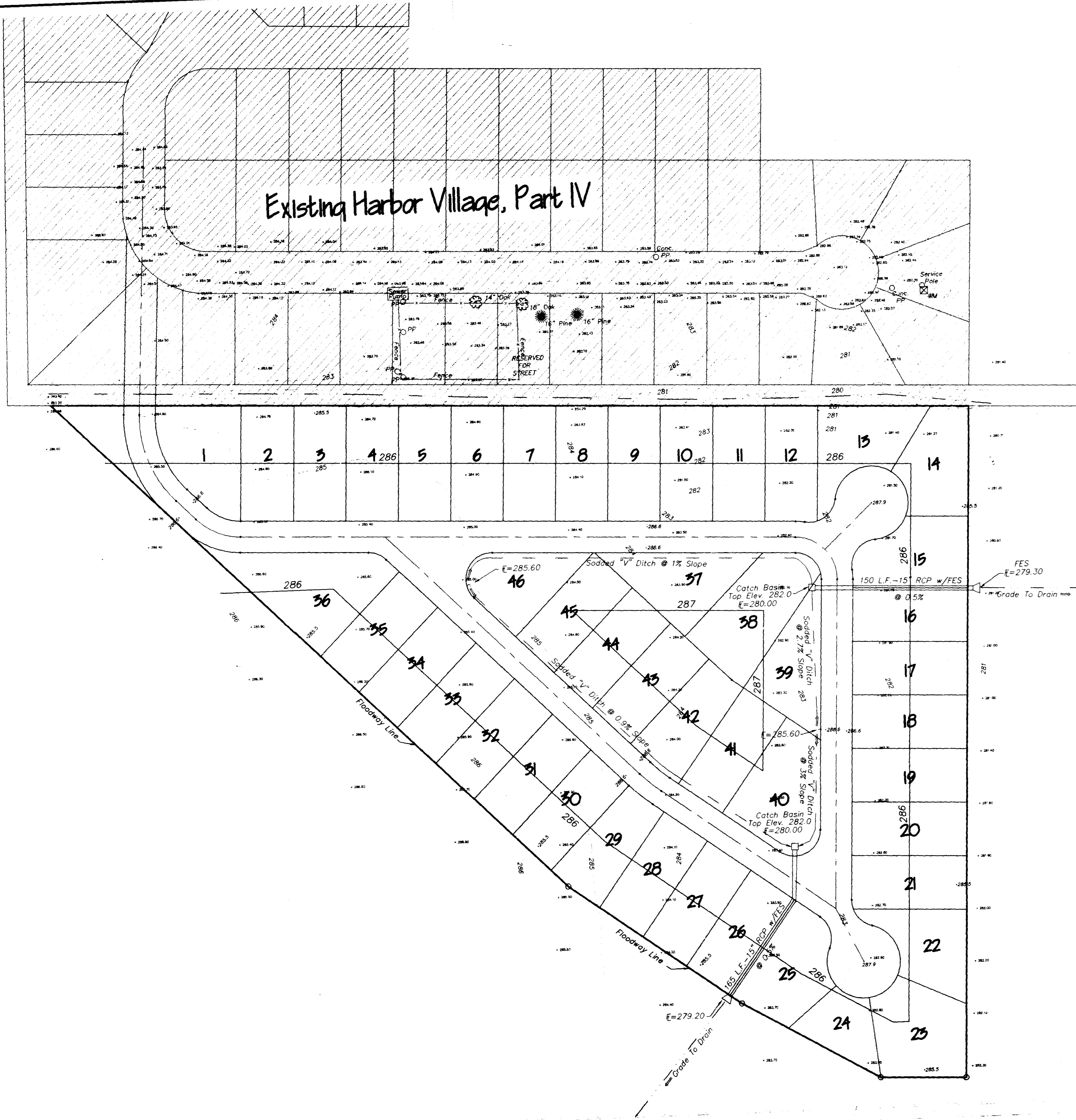
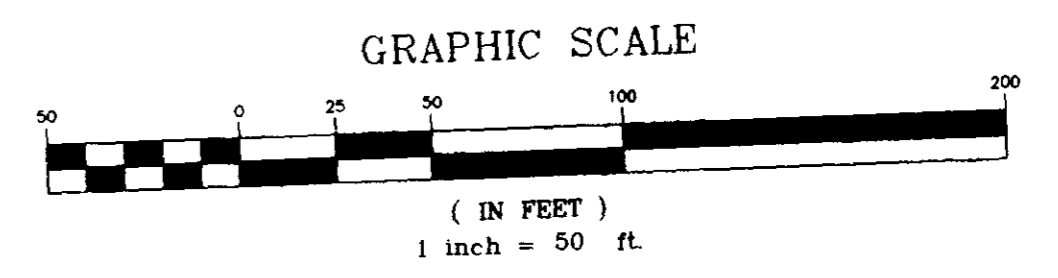


TYPICAL SECTION
(Not To Scale)

FEMA
National Flood Insurance Program
Flood Insurance Rate Map
Community Panel Number 280228 0340 D
Flood Zone 'AE'
100 Year Flood Elevation 287.0

PREPARED FOR HOMWOOD MANOR ENTERPRISES, INC. MADISON COUNTY, MISSISSIPPI	
HARBOR VILLAGE, PART V MADISON COUNTY, MISSISSIPPI	
PRELIMINARY PLAT	
DESIGNED BY: E.M. DRAWN BY: E.L.G. CHECKED BY: A.S. JOWAN	DRAWING NO. 2 OF 6 H-05-01

C:\WORK\1005\1005.PLT Tue May 22 11:39:00 1994 Drawn by Steve Roberts, Neel Schaffer, Inc.



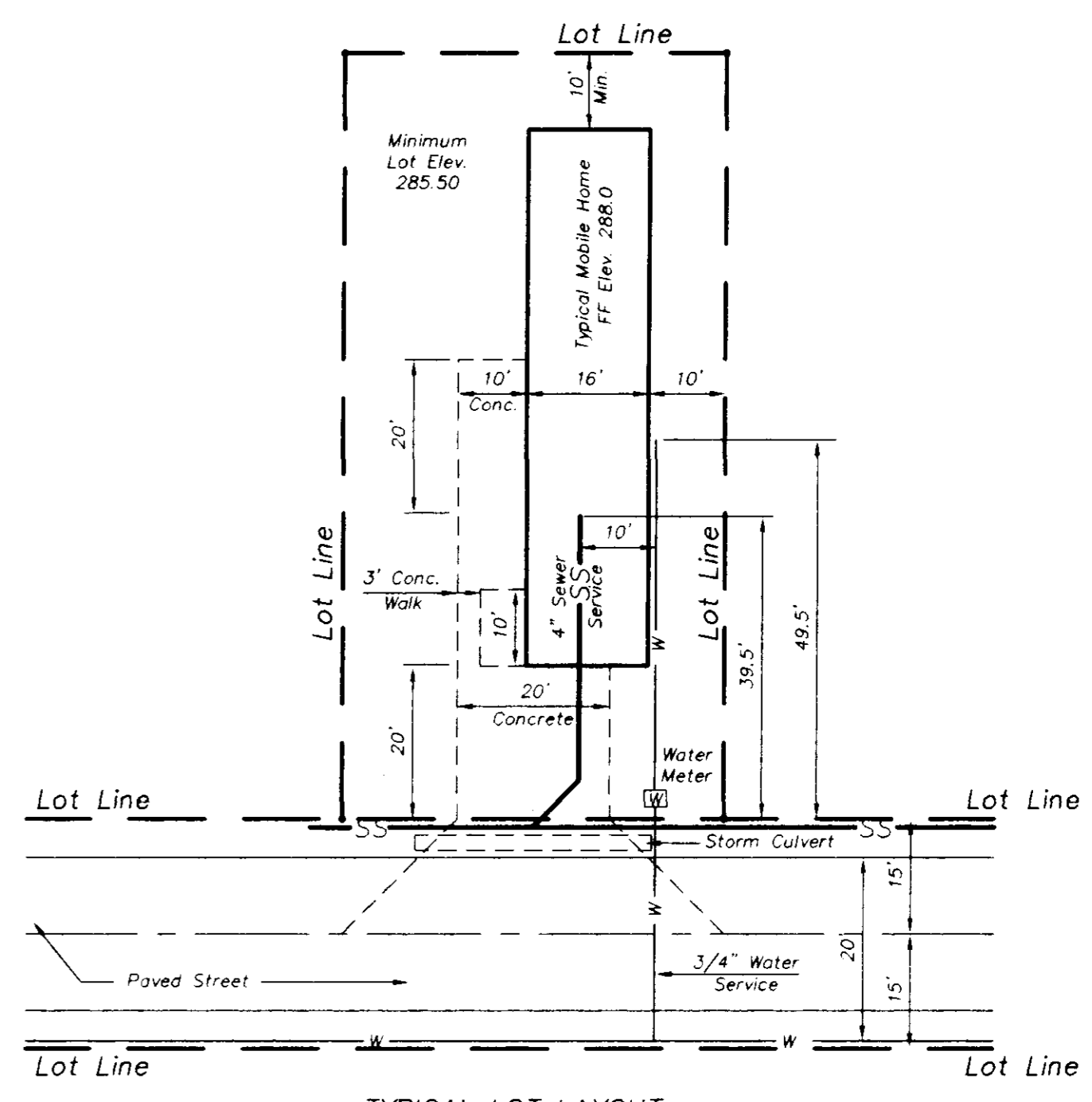
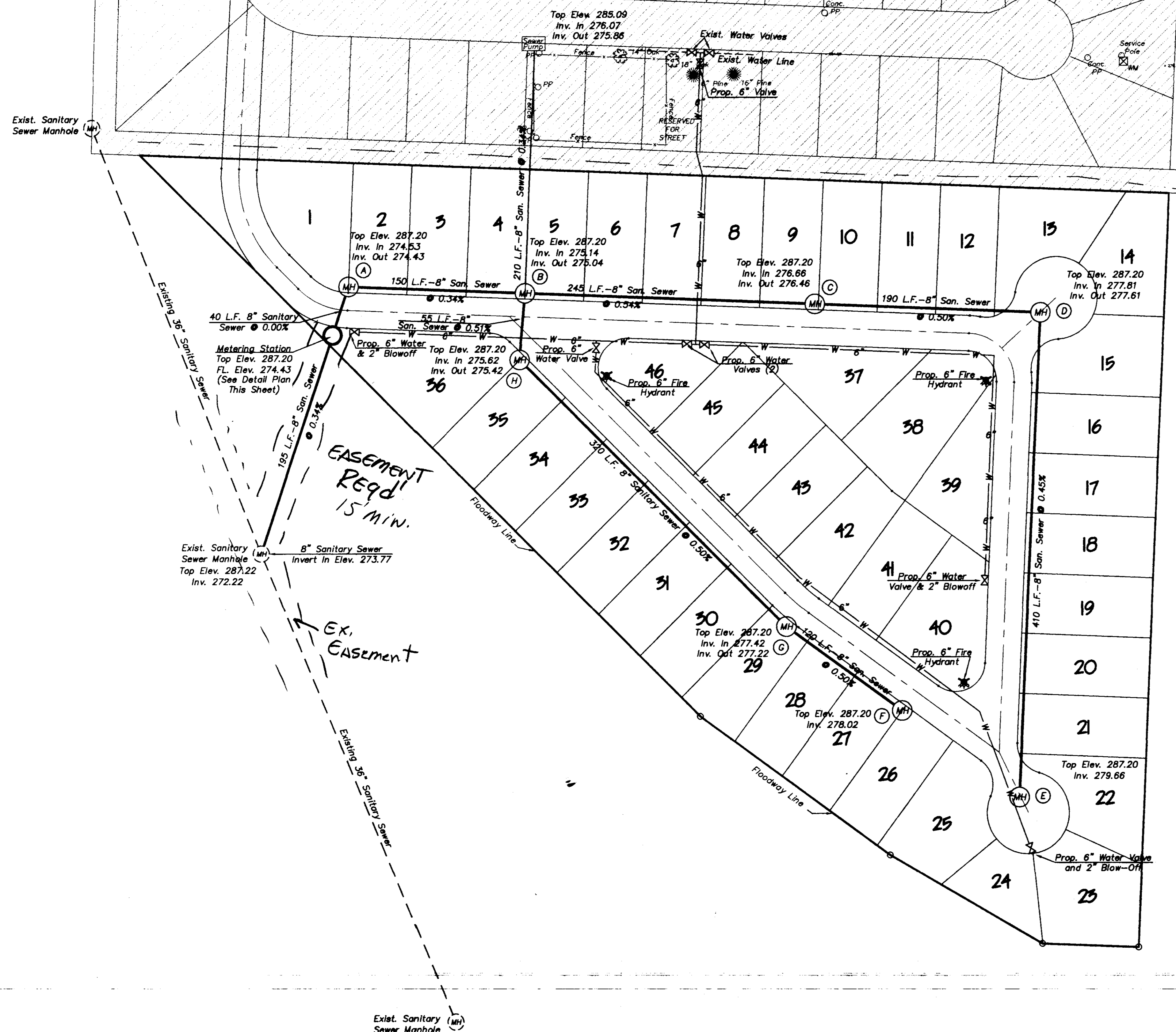
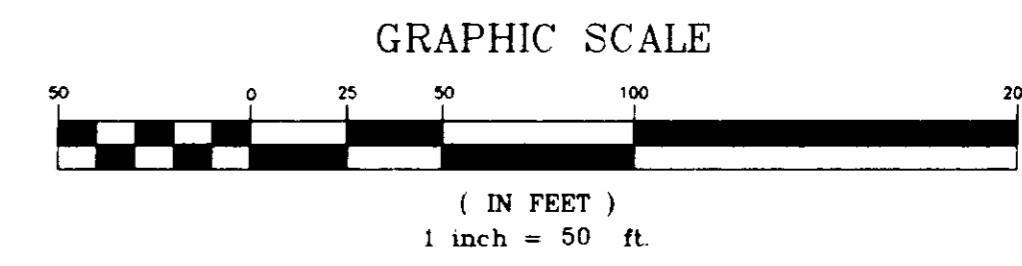
151305-051003 Tue Dec 20 08:44:36 1994 Drawn By: Steve Roberts - Neel Schaffer, Inc.

FEMA
National Flood Insurance Program
Flood Insurance Rate Map
Community Panel Number 280228 0340 D
Flood Zone 'AE'
100 Year Flood Elevation 287.0

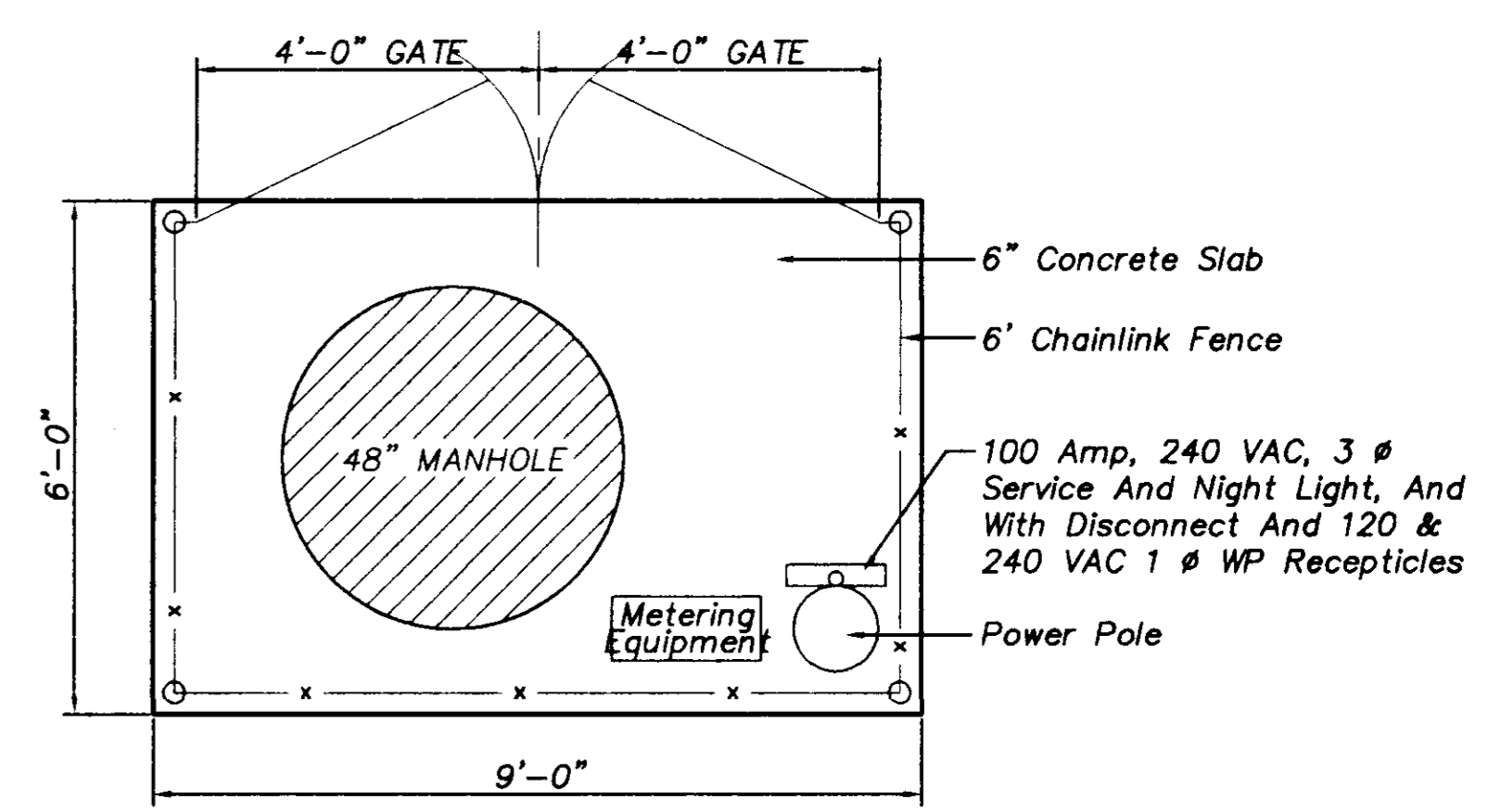
PREPARED FOR HOMWOOD MANOR ENTERPRISES, INC. MADISON COUNTY, MISSISSIPPI													
HARBOR VILLAGE, PART V MADISON COUNTY, MISSISSIPPI													
DRAINAGE SITE PLAN													
<table border="1"> <tr><td>DRGN</td><td>RM</td></tr> <tr><td>CHKD</td><td>ELJ</td></tr> <tr><td>SCALE</td><td>AS SHOWN</td></tr> </table>	DRGN	RM	CHKD	ELJ	SCALE	AS SHOWN	<table border="1"> <tr><td colspan="2">NEEL-SCHAFFER, INC.</td></tr> <tr><td colspan="2">Engineers - Planners</td></tr> <tr><td colspan="2">Jackson, Mississippi</td></tr> </table>	NEEL-SCHAFFER, INC.		Engineers - Planners		Jackson, Mississippi	
DRGN	RM												
CHKD	ELJ												
SCALE	AS SHOWN												
NEEL-SCHAFFER, INC.													
Engineers - Planners													
Jackson, Mississippi													
DRAWING NO. 3 of 6 1-202-01													

11-4-94

Existing Harbor Village, Part IV



TYPICAL LOT LAYOUT
Scale 1"=20'



DETAIL PLAN OF METERING STATION
(N.T.S.)

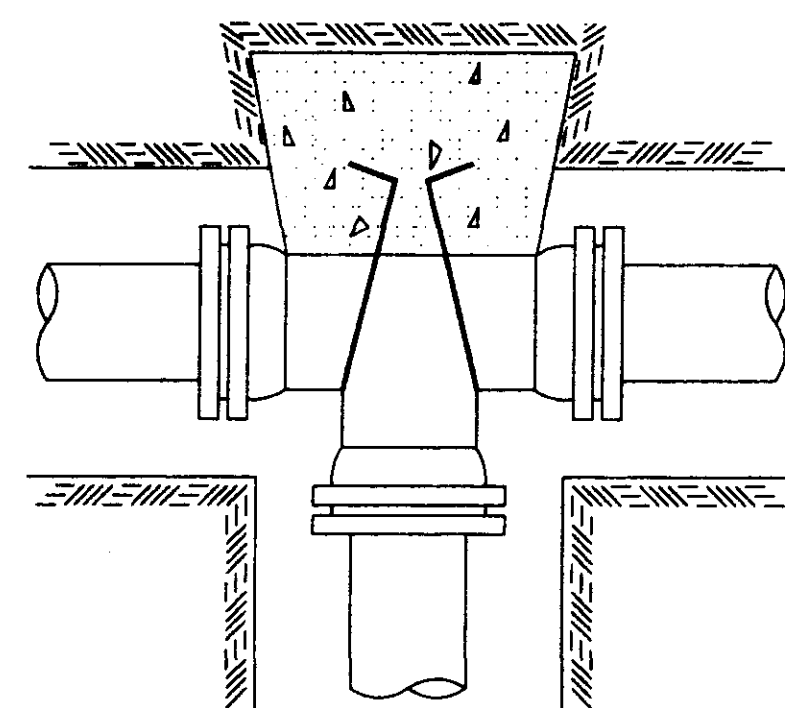
EASEMENT
REQD
15' MIN.

EX.
EASEMENT

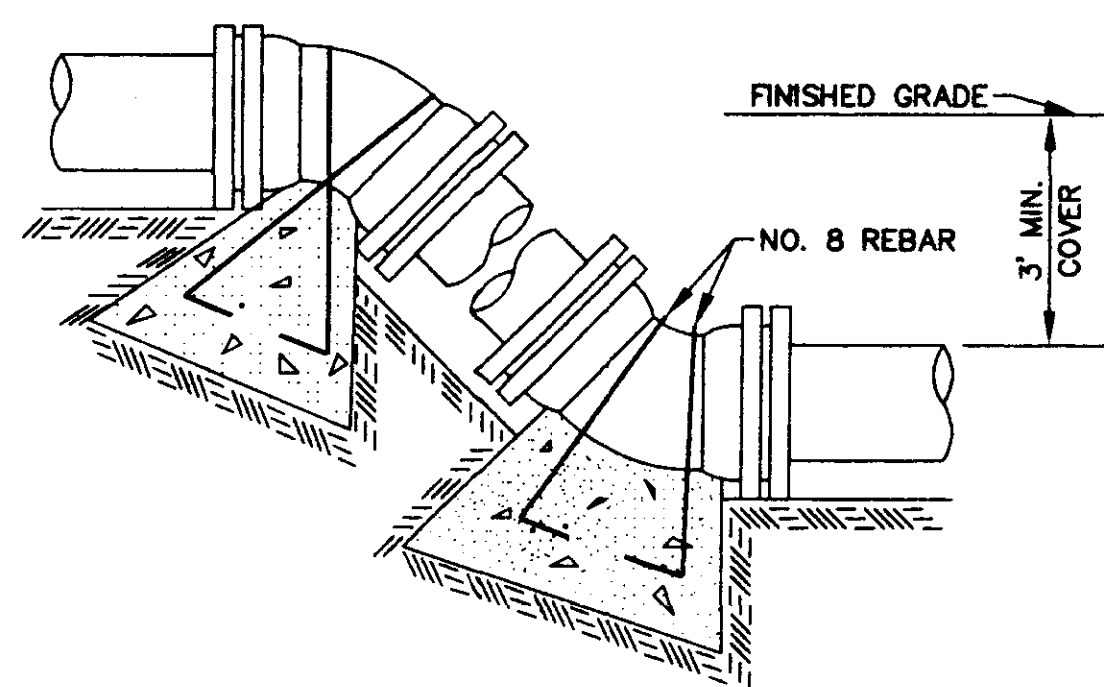
C:\DWG\1305-PS-PA\1305 Tue Dec 20 09:10:51 1994 Drawn By: Steve Roberts - Neel-Schaffer, Inc.

FEMA
National Flood Insurance Program
Flood Insurance Rate Map
Community Panel Number 280228 0340 D
Flood Zone 'AE'
100 Year Flood Elevation 287.0

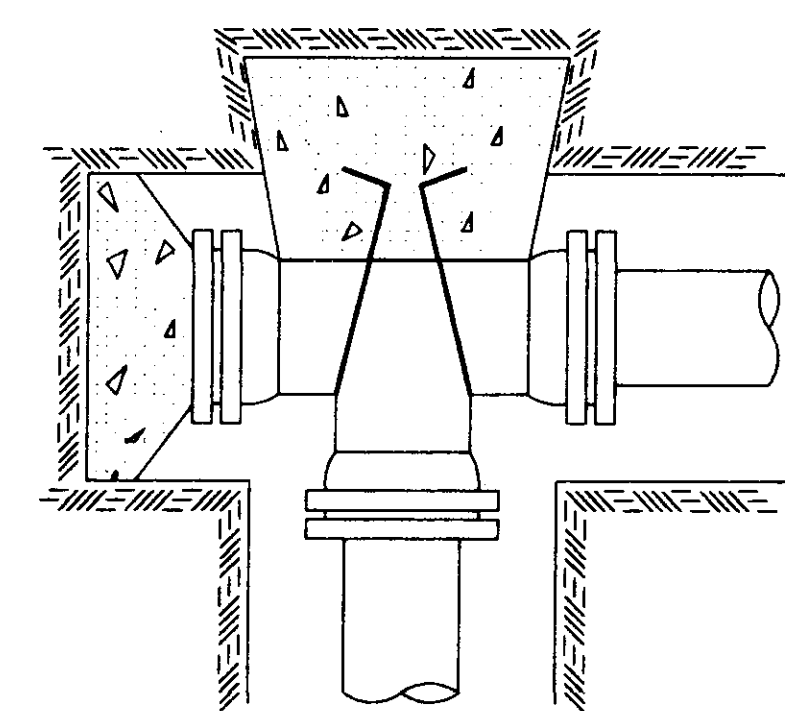
PREPARED FOR HOMWOOD MANOR ENTERPRISES, INC. MADISON COUNTY, MISSISSIPPI	
HARBOR VILLAGE, PART V MADISON COUNTY, MISSISSIPPI	
SEWER AND WATER SITE PLAN	
DESGN: PM DRAWN: E.L.I. CHECKED: AS 3/20/94 SCALE: AS SHOWN	DRAWING NO. 4 of 6 H-502-Q NEEL-SCHAFFER, INC. Engineers - Planners Jackson, Mississippi



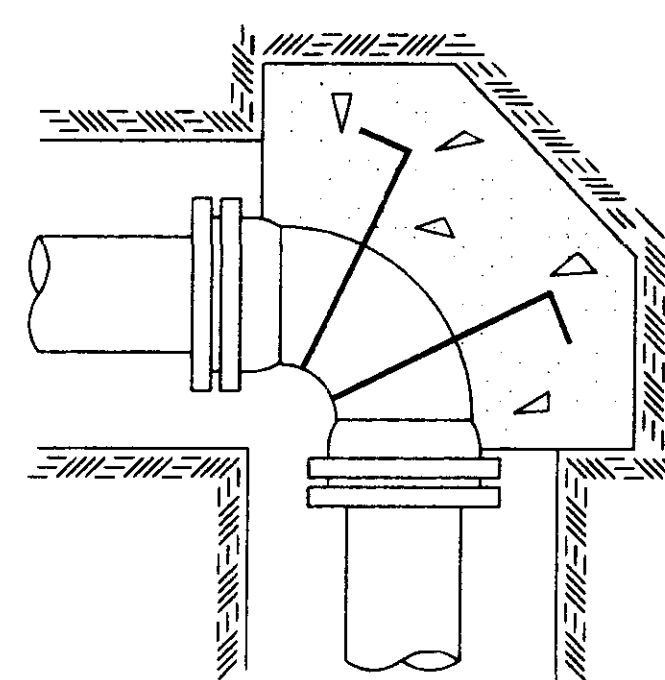
TEE



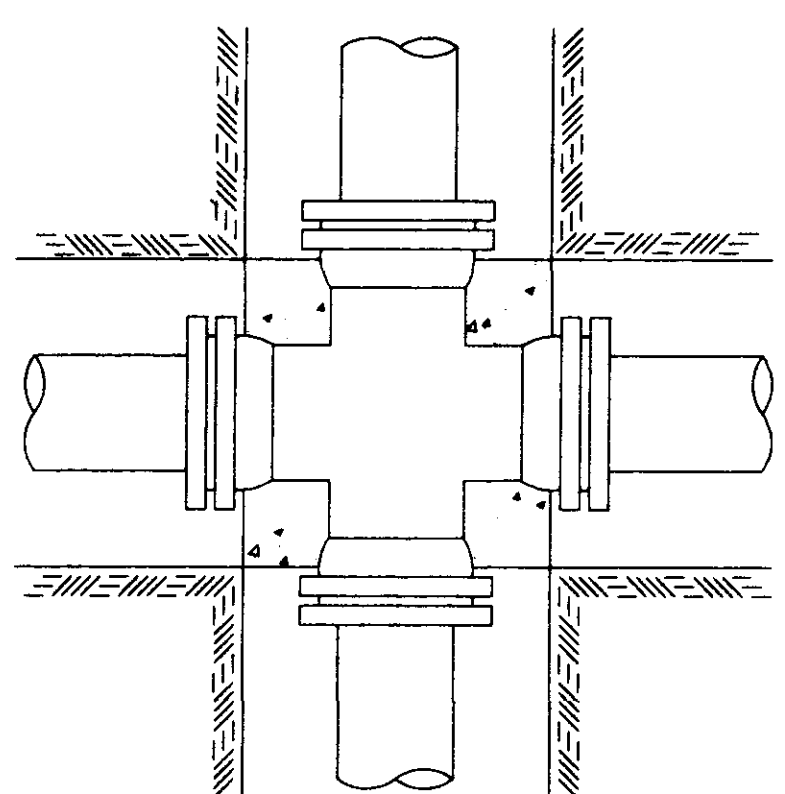
VERTICAL BENDS



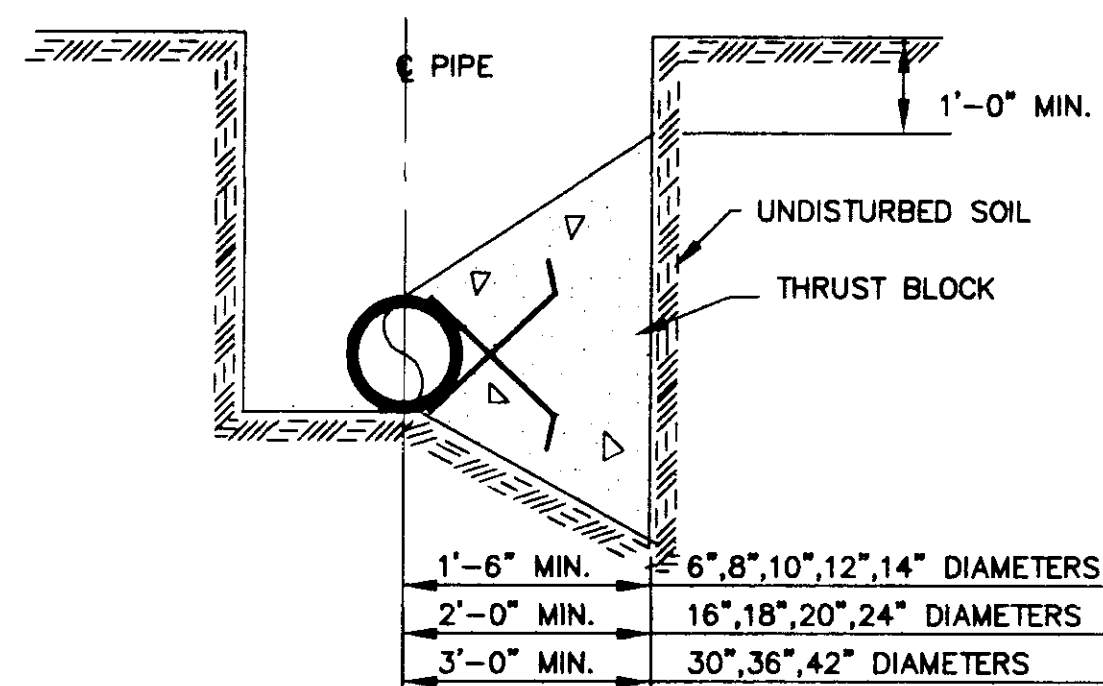
PLUGGED TEE



90° BEND



CROSS



TYPICAL CROSS SECTION

TYPICAL THRUST BLOCKING IN WATER MAINS AND SEWAGE FORCE MAINS

NOTE: ALL THRUST BLOCKS 2,500 PSI CONCRETE AGAINST UNDISTURBED EARTH

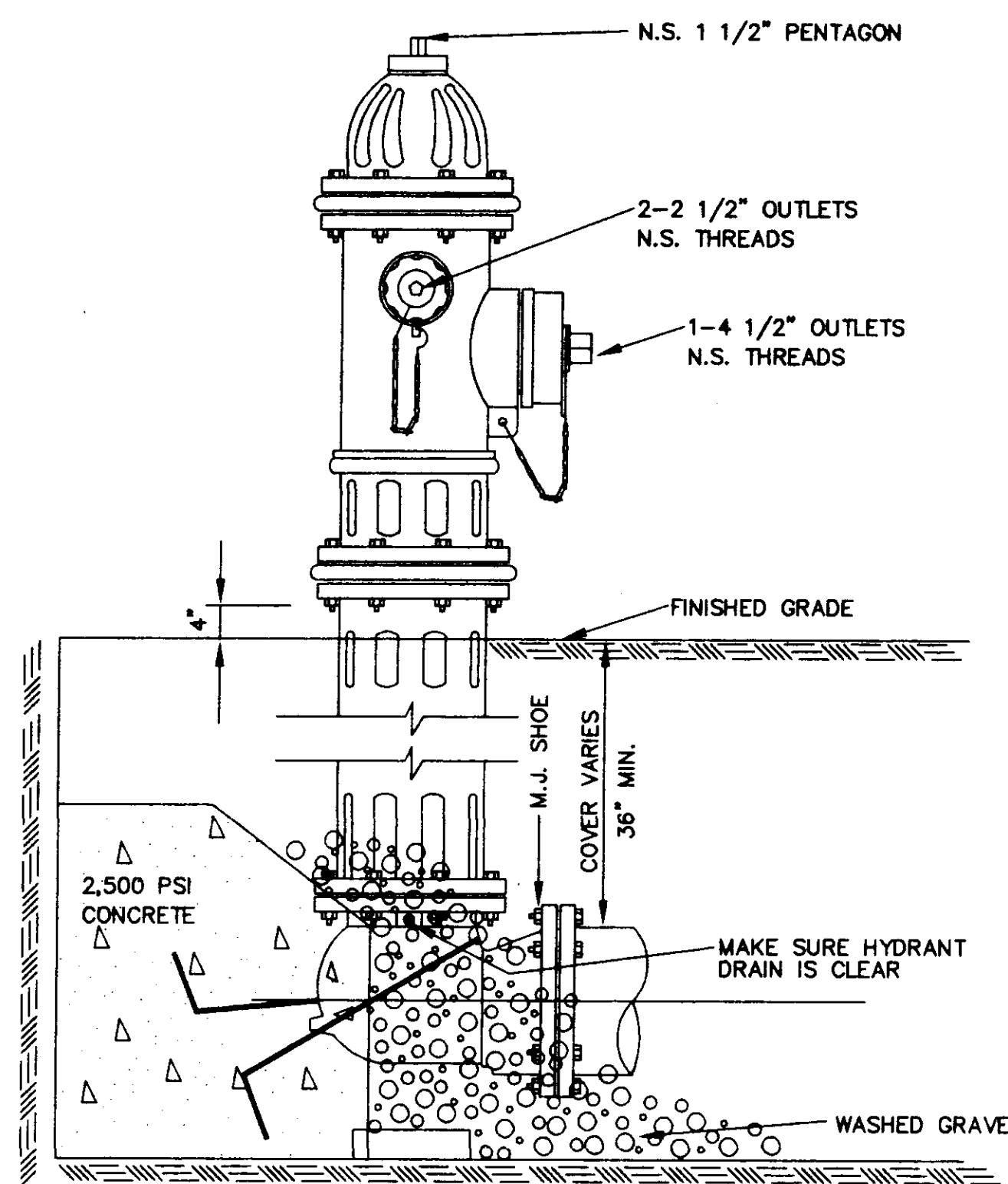
BEARING AREA IN SQ. FT.

NOMINAL PIPE DIAMETER (IN)	VERTICAL BENDS					NOMINAL PIPE DIAMETER (IN)	VERTICAL BENDS				
	DEAD-END OR TEE	90° BEND	45° BEND	22 1/2° BEND	11 1/4° BEND		DEAD-END OR TEE	90° BEND	45° BEND	22 1/2° BEND	11 1/4° BEND
6	2.5	3.0	2.0	2.0	2.0	6	—	—	26.0(1.0)	14.0(.5)	7.0(.3)
8	4.0	6.0	3.0	2.0	2.0	8	—	—	45.0(1.7)	25.0(.9)	13.0(.5)
10	6.0	9.0	5.0	2.5	2.0	10	—	—	68.0(2.5)	37.0(1.4)	19.0(.7)
12	9.0	11.0	6.0	3.5	2.0	12	—	—	97.0(3.6)	52.0(1.9)	27.0(1.0)
14	12.0	18.0	9.0	5.0	2.5	14	—	—	130(4.8)	70.0(2.6)	36.0(1.3)
16	16.0	22.5	12.0	6.0	3.0	16	—	—	168(6.2)	91.0(3.4)	46.0(1.7)
18	20.0	28.0	15.0	8.0	4.0	18	—	—	211(7.8)	114(4.2)	58.0(2.2)
20	24.5	34.0	19.0	10.0	5.0	20	—	—	259(9.6)	140(5.2)	72.0(2.6)
24	35.0	49.0	27.0	14.0	7.0	24	—	—	370(13.7)	200(7.4)	102(3.8)
30	54.0	76.0	41.0	21.0	10.0	30	—	—	568(21.1)	308(11.4)	156(5.8)
36	77.0	108.0	59.0	30.0	15.0	36	—	—	814(30.1)	440(16.3)	225(8.3)
42	104.0	146.0	79.0	40.0	20.0	42	—	—	1100(40.7)	595(22.0)	303(11.2)

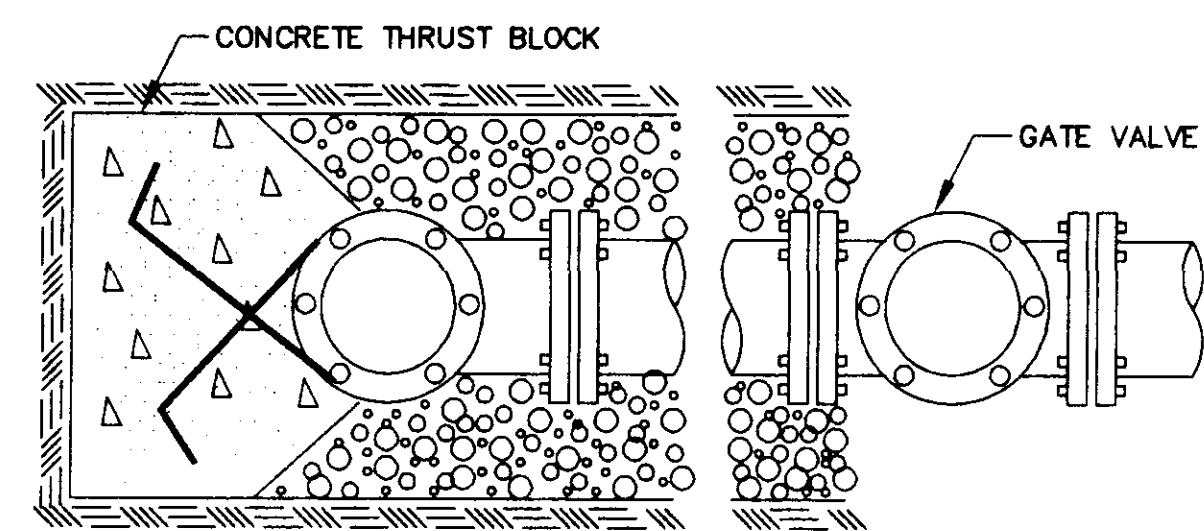
VOLUME OF BLOCKS INCLUDING SOIL LOAD CU. FT. (CU. YDS.)

NOTE: ABOVE VALUES CALCULATED USING P=100 AND ALLOWANCE SOIL BRG. = 1500 PSF. FOR DIFFERENT P, MULTIPLY ABOVE VALUES BY P/100. FOR DIFFERENT SOIL BRG, MULTIPLY ABOVE VALUES BY 1500/S.B.

NOTE: ABOVE VALUES REPRESENT THE VOLUME OF BLOCKS INCLUDING SOIL LOAD IN CU.FT. (CU.YDS.) THE VALUES WERE CALCULATED USING A P=100 PSI AND A S.F.=1.5. FOR DIFFERENT P, MULTIPLY VALUES BY P/100.



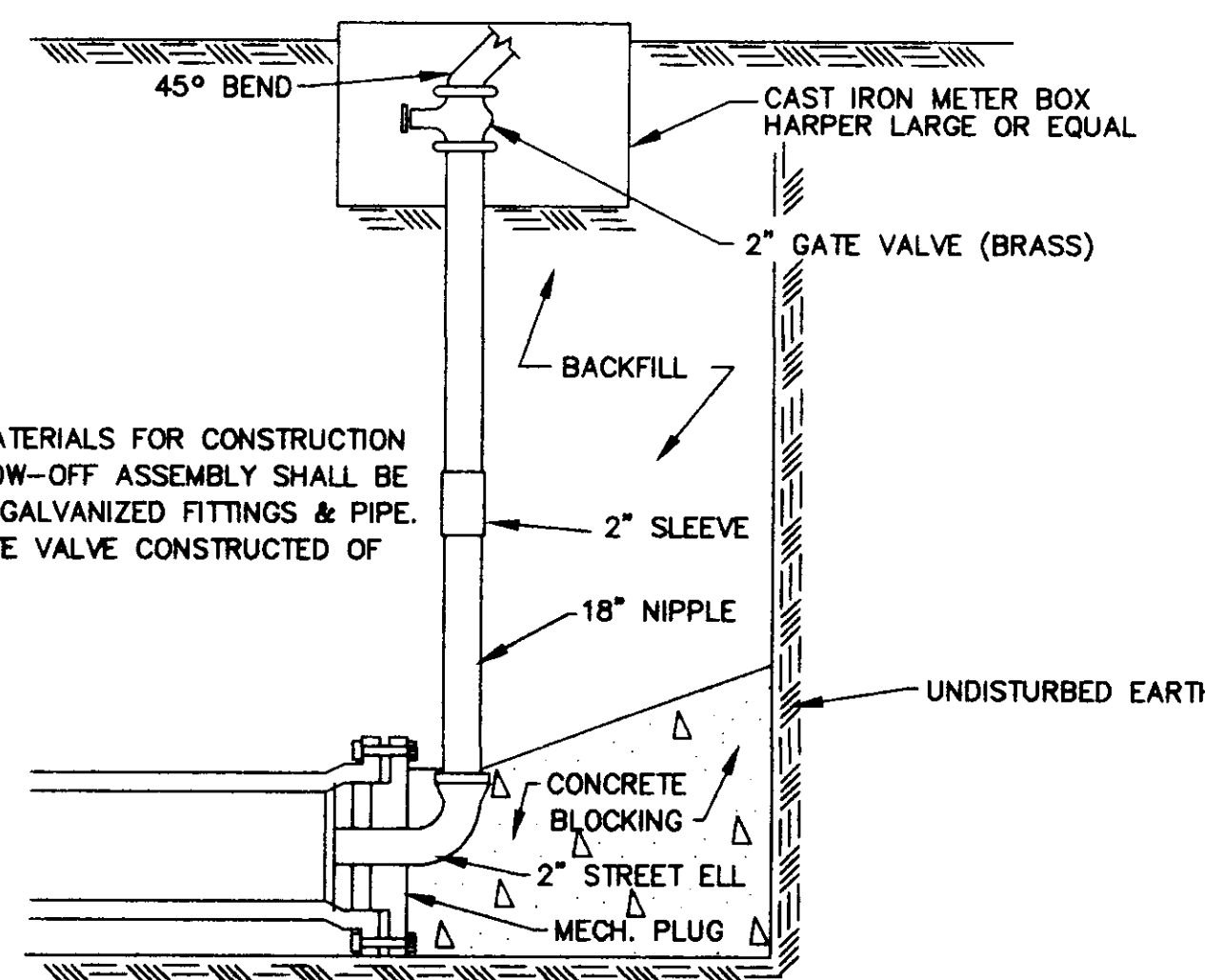
ELEVATION



PLAN

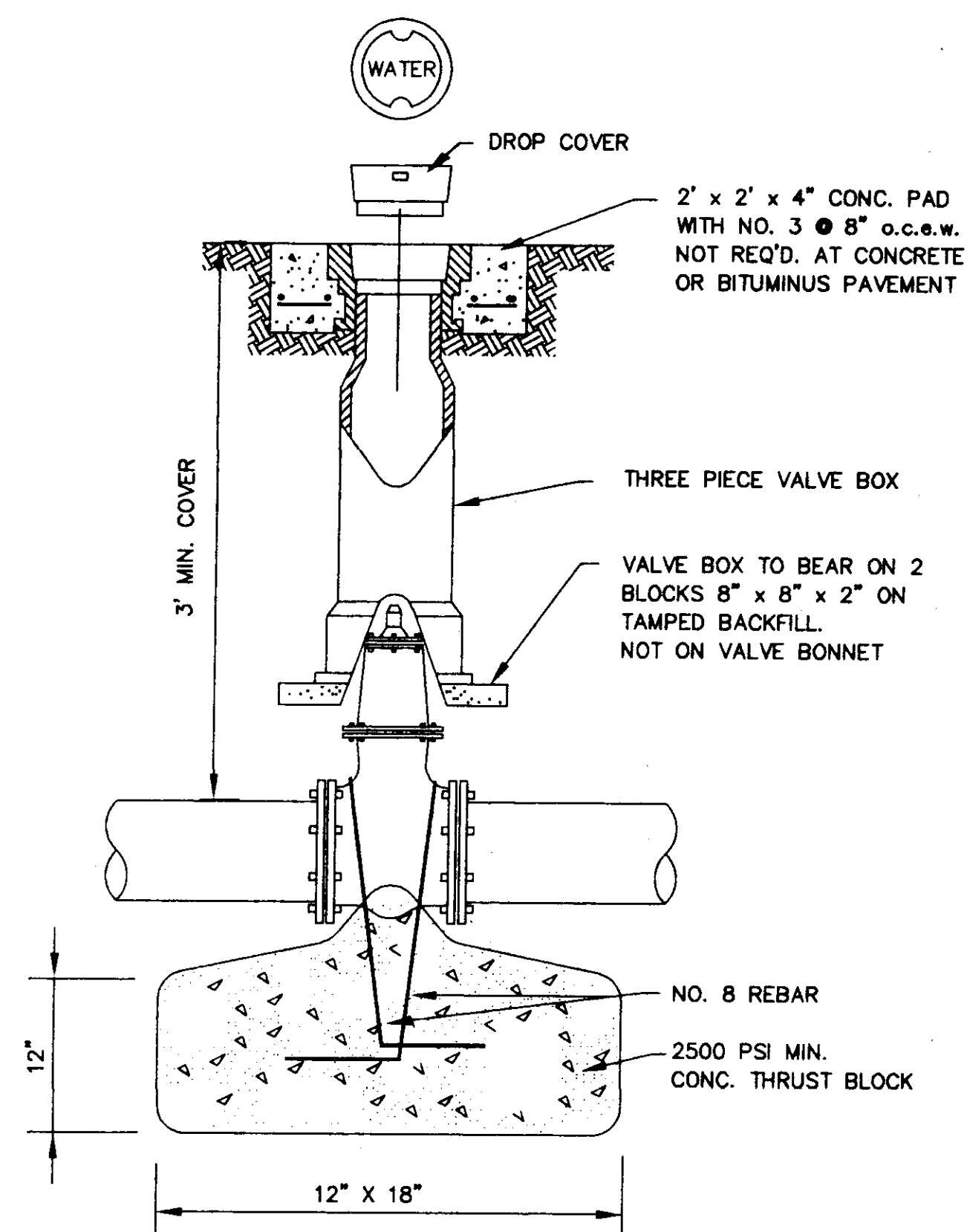
TYPICAL FIRE HYDRANT INSTALLATION

NOTE: GATE VALVES WILL BE REQUIRED ON ALL FIRE HYDRANT LEGS. N.T.S.



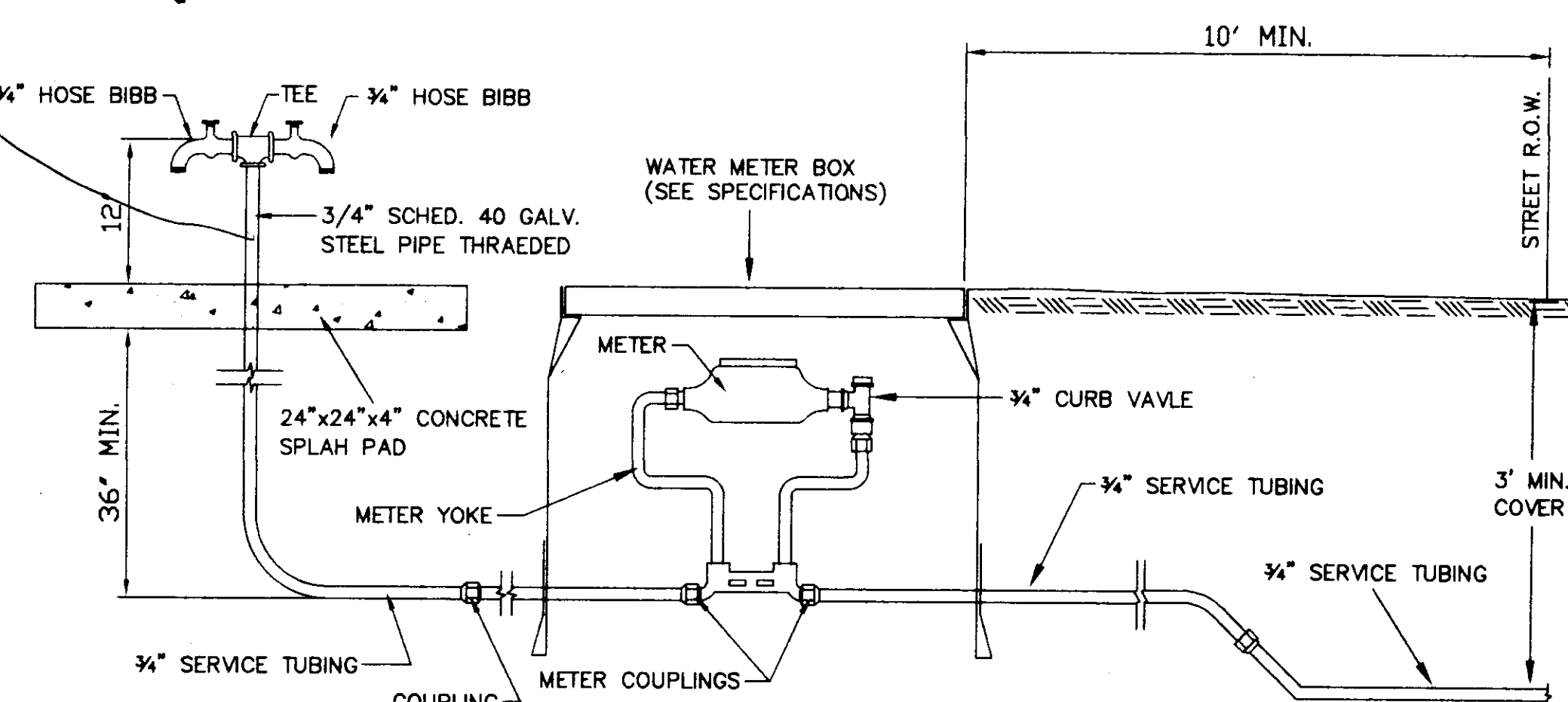
TYPICAL BLOW-OFF ASSEMBLY

N.T.S.



GATE VALVE DETAIL

N.T.S.



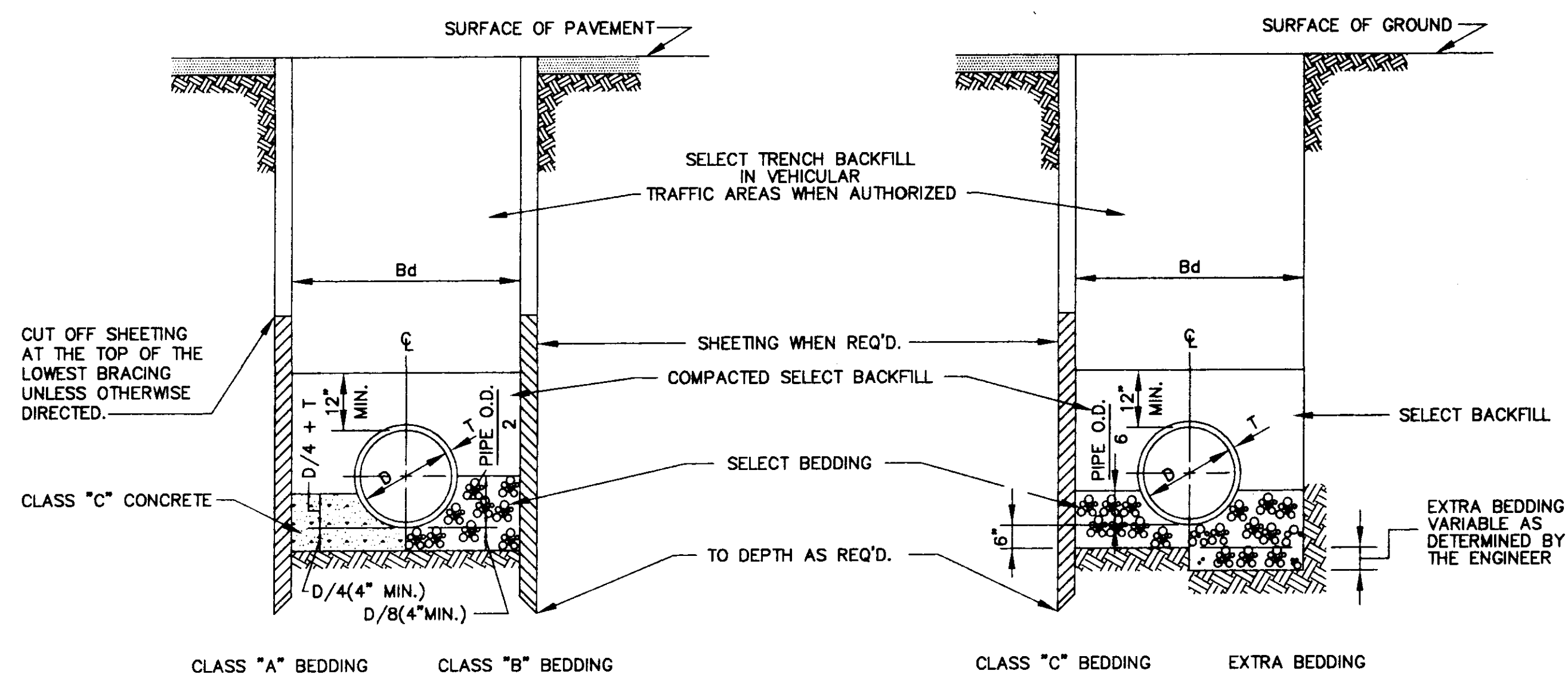
TYPICAL 3/4" WATER SERVICE

N.T.S.

PREPARED FOR
HOMWOOD MANOR ENTERPRISES, INC.
 MADISON COUNTY, MISSISSIPPI

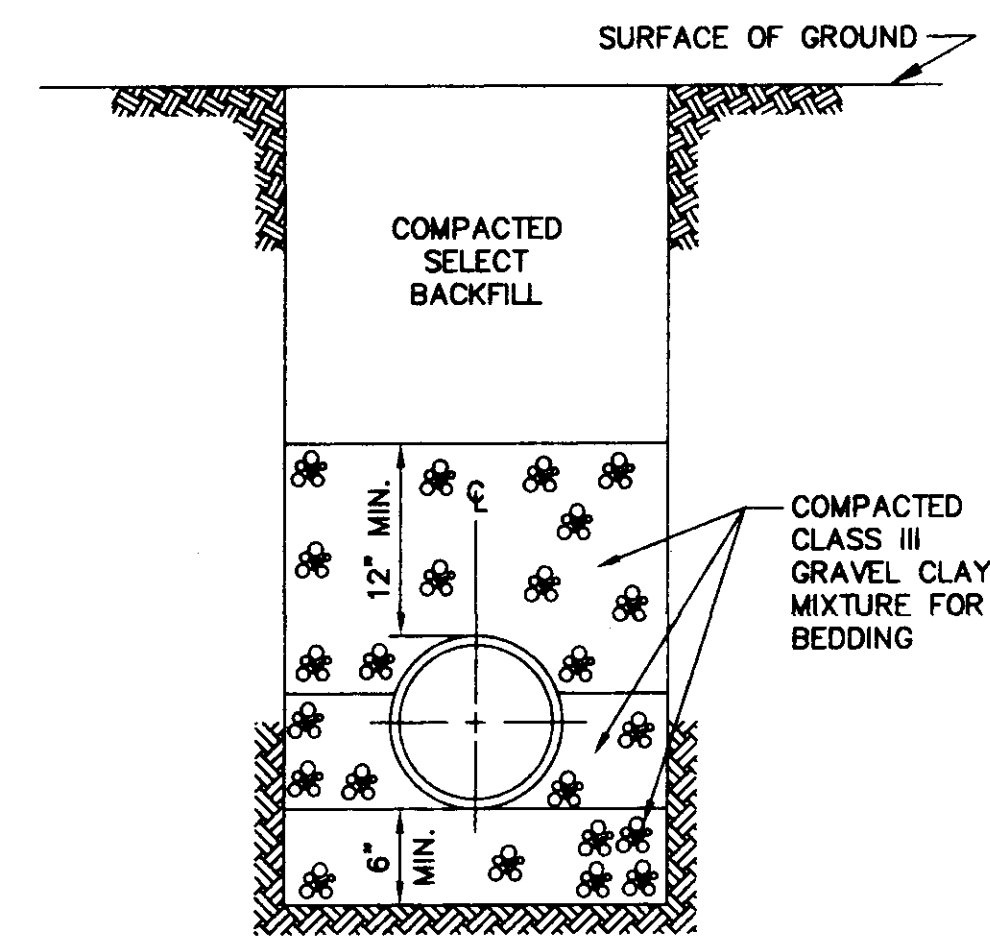
HARBOR VILLAGE, PART V
 MADISON COUNTY, MISSISSIPPI

STANDARD WATER SERVICE AND FIRE HYDRANT DETAILS



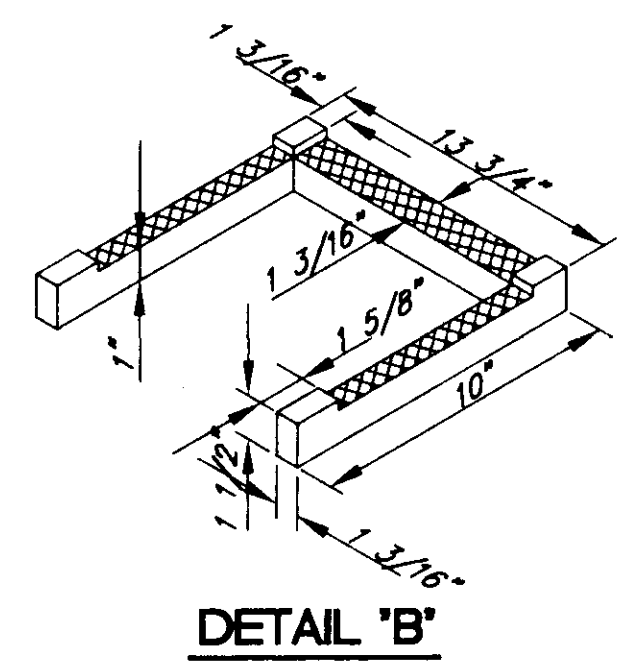
BEDDING FOR VITRIFIED CLAY, CONCRETE & ABS PIPE

TYPICAL TRENCH DETAILS
N.T.S.

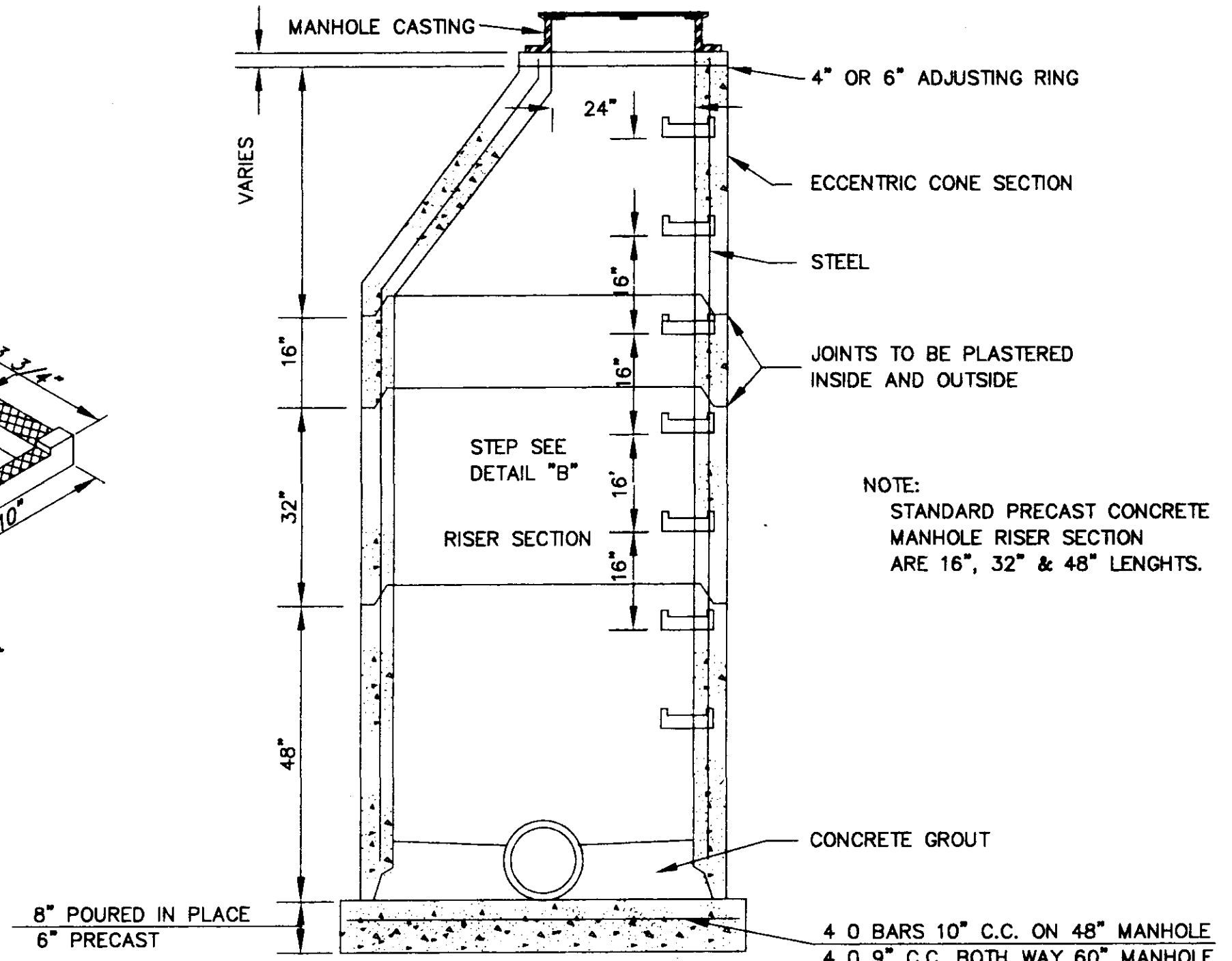


BEDDING FOR PVC PIPE

N.T.S.

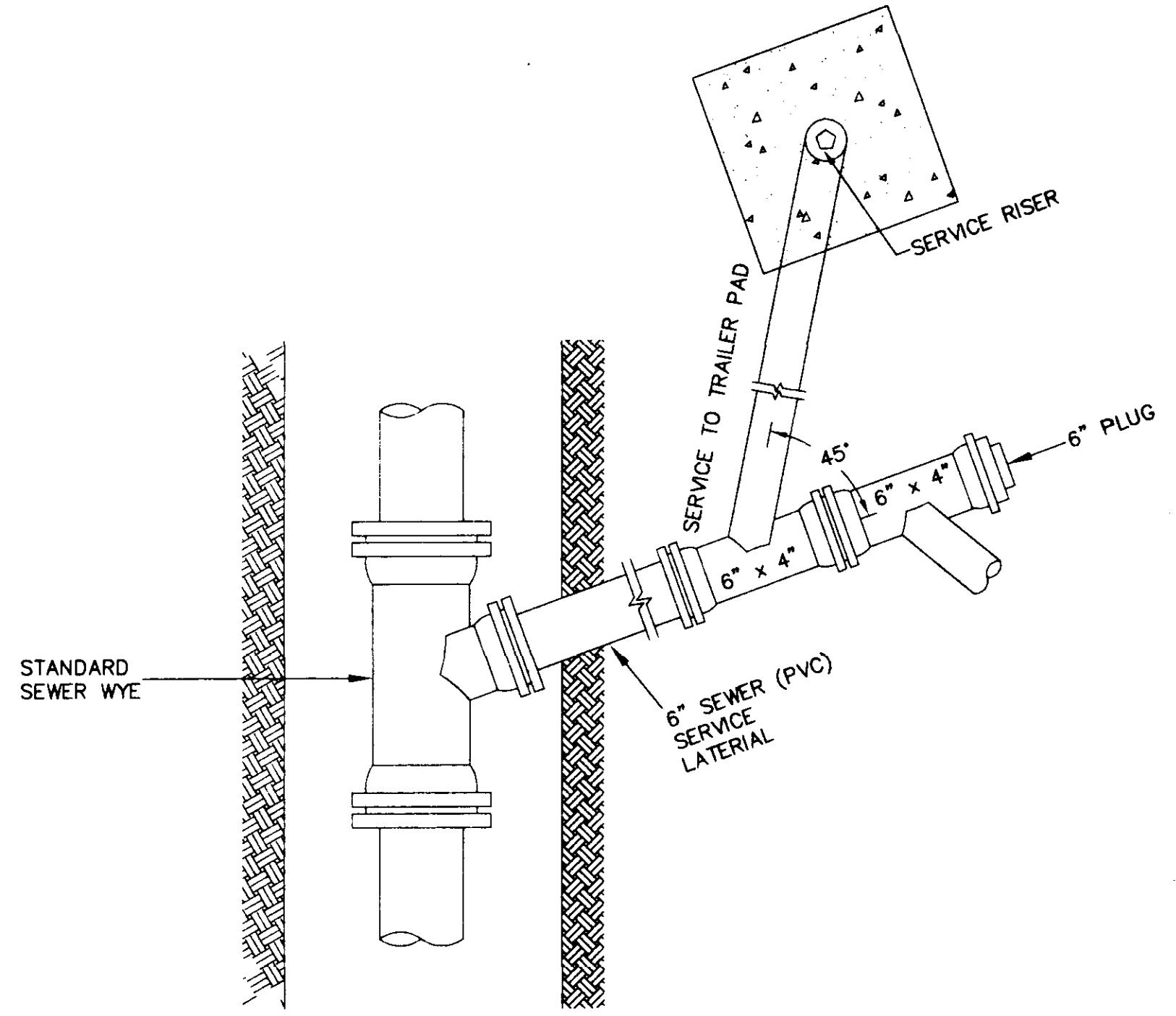


DETAIL 'B'

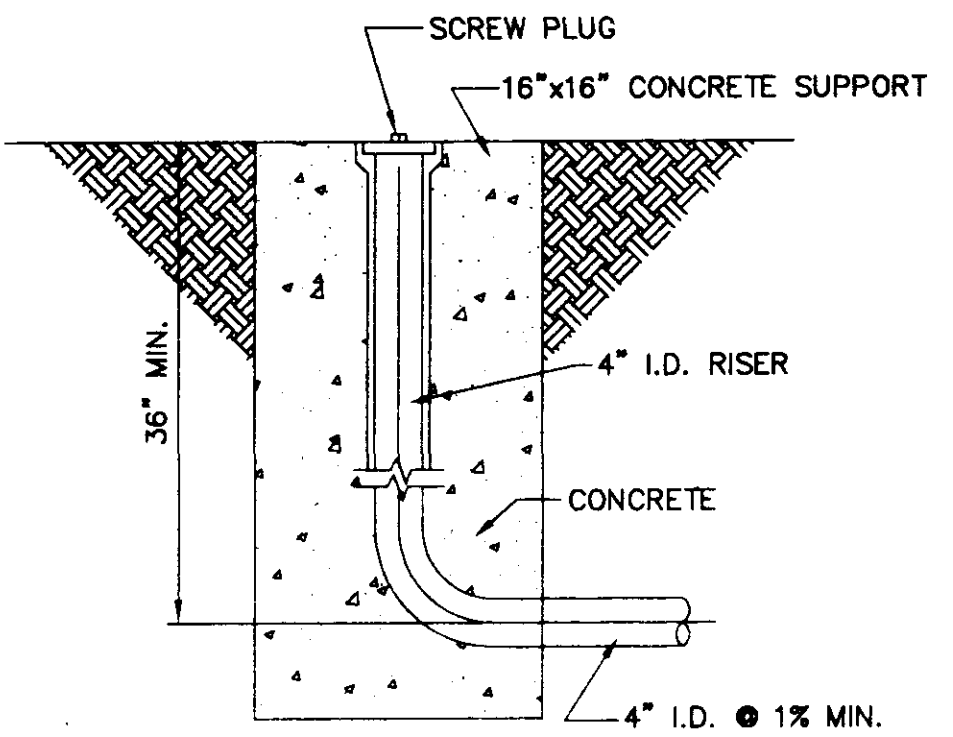


SECTION OF PRECAST CONCRETE MANHOLE

N.T.S.

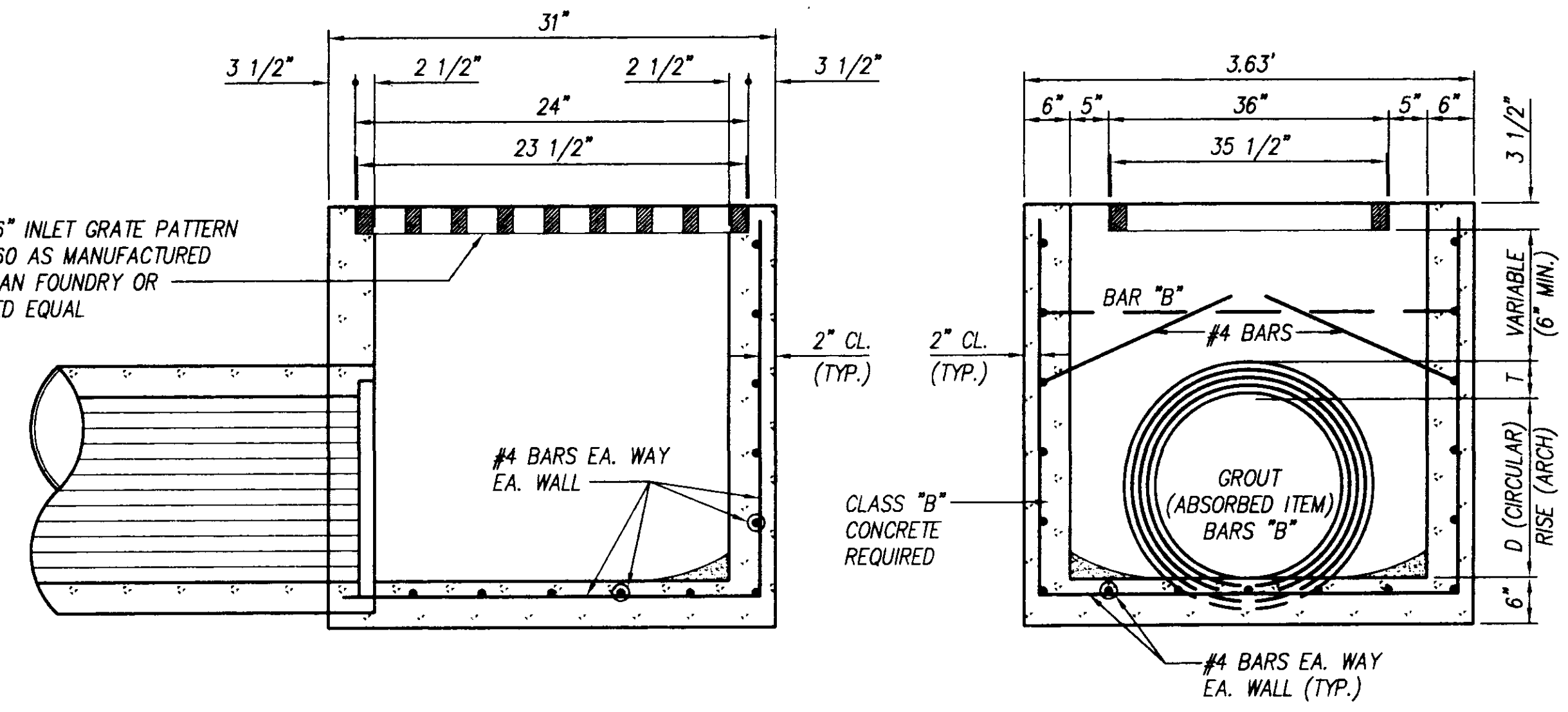


PLAN



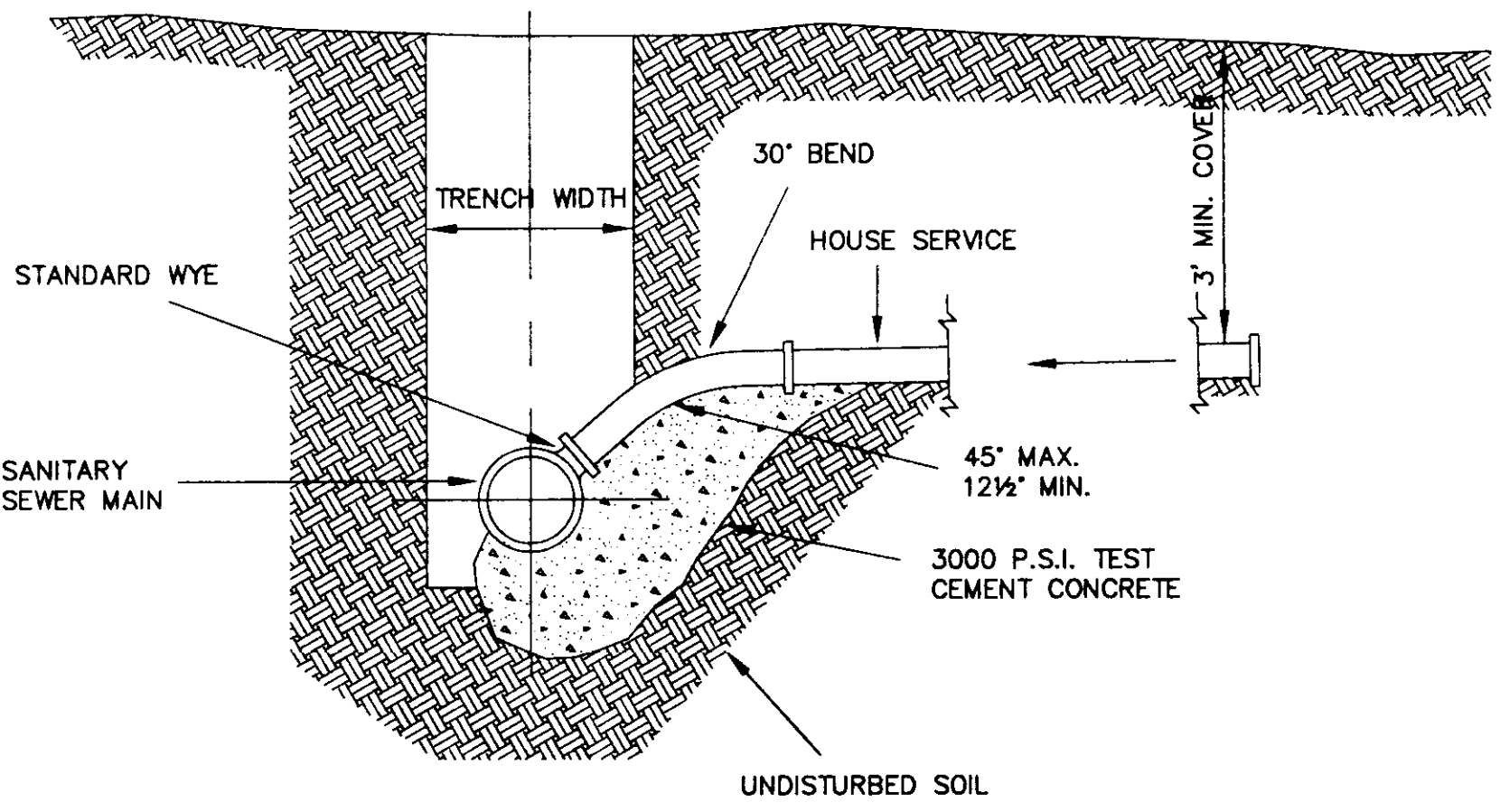
SERVICE RISER DETAIL

N.T.S.



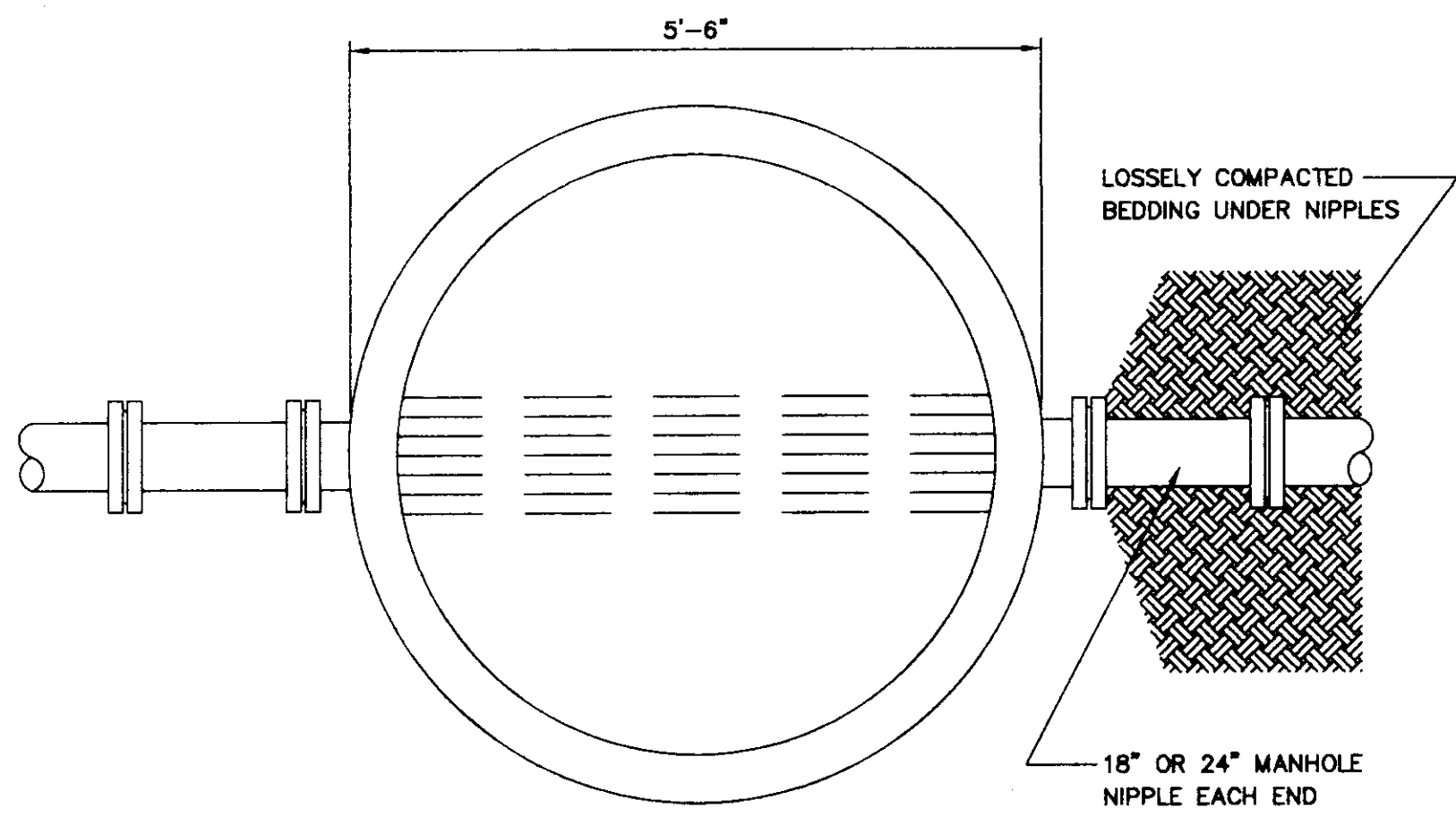
GRATE INLET DETAILS (UP TO AND INCLUDING 24" PIPE)

NO SCALE



ELEVATION

SEWER SERVICE CONNECTION
(SIMILAR FOR SINGLE SERVICE CONNECTION)
N.T.S.



TYPICAL PIPE CONNECTION TO MANHOLE

N.T.S.

NOTES:

- DO NOT POUR ADDITIONAL CONCRETE ON OR BEYOND MANHOLE NIPPLE.
- USE A MINIMUM OF 1 NIPPLE AT EACH ENTRANCE TO MANHOLE.
- PIPE OPENING IN PRE-CAST CONCRETE UNITS SHALL BE EQUAL TO OUTSIDE DIAMETER OF PIPE PLUS 6" MAX.
- DO NOT USE BRICK, BLOCK OR TIMBER TO SUPPORT PIPE OR NIPPLES OUTSIDE OF MANHOLE.

SANITARY SEWER NOTES:

- MANHOLE INTERIOR TO BE COATED WITH 20 MIL. THICKNESS GLIDDEN TOP SERVICE BLACK BITUMINOUS COATING (OR APPROVED EQUAL) APPLIED IN ACCORDANCE WITH MANUFACTURER'S RECOMMENDATIONS.
- MAXIMUM PERMITTED INFILTRATION/EXFILTRATION IS 200 GALLONS PER INCH DIAMETER PER MILE PER DAY.
- PIPE TO MANHOLE CONNECTIONS: CLAY SEWER PIPE - INSTALL PIPE TO PROVIDE PIPE JOINT WITHIN TWO FEET OF MANHOLE WALL, USE 2" NIPPLE IF NECESSARY. PVC PIPE - INSTALL PREMOLDED FLEXIBLE MANHOLE JOINT SEAL DEVICE TO CONNECT PIPE TO MANHOLE WALL.
- INSTALLATION OF SANITARY SEWER MAINS & SERVICES: WHEN A SEWER SERVICE LINE CROSSES ABOVE A WATER SUPPLY MAIN OR WITHIN 18" BELOW A WATER MAIN, OR WITHIN 10' ON EITHER SIDE, THE SEWER SERVICE OR MAIN SHALL BE 160 P.S.I. PVC WATER PIPE FOR A DISTANCE OF 10' EITHER SIDE OF THE WATER SUPPLY MAIN.

PREPARED FOR
HOMWOOD MANOR ENTERPRISES, INC.
MADISON COUNTY, MISSISSIPPI

HARBOR VILLAGE, PART V
MADISON COUNTY, MISSISSIPPI

SANITARY SEWER, MANHOLE AND CATCH BASIN DETAILS

DESIGN: D.B.		DRAWING NO.
DRAWN: J.S.R.		6 of 6
CHECK: C.L.		
SCALE: AS SHOWN		