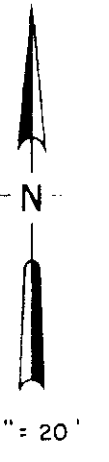
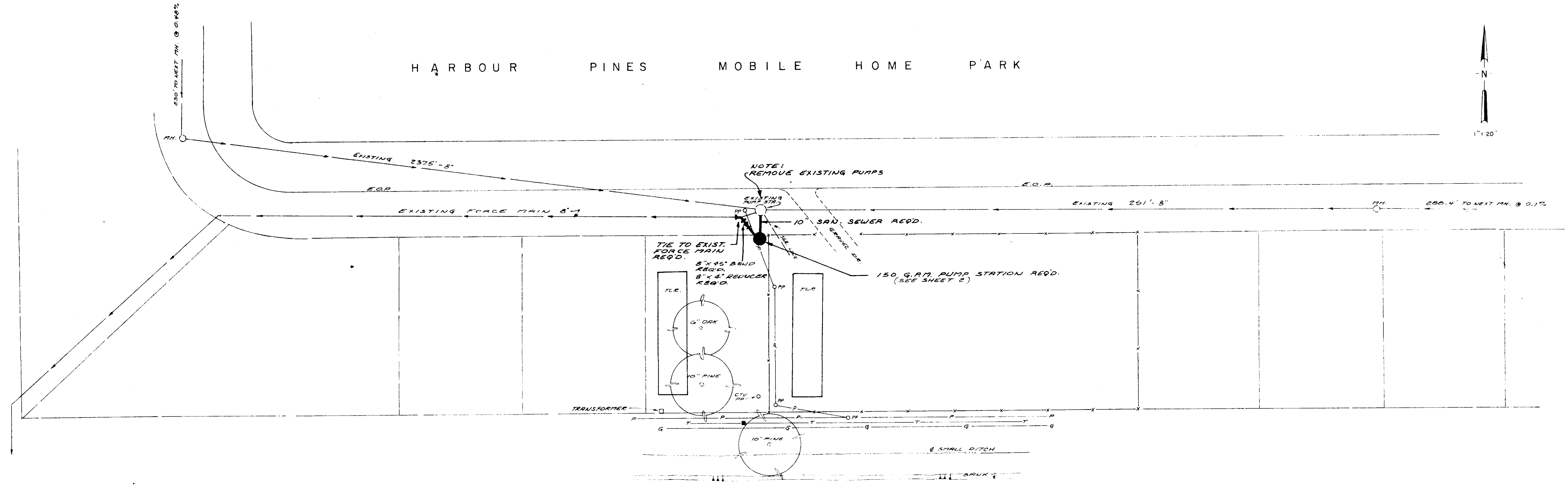


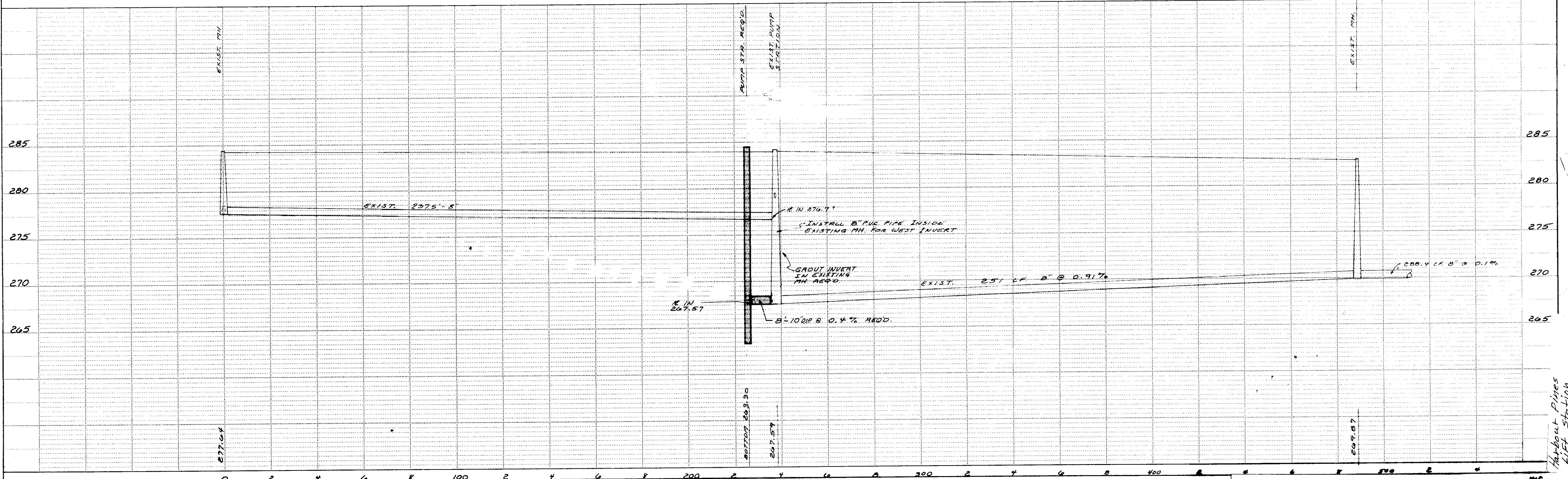
H A R B O U R P I N E S M O B I L E H O M E P A R K



PLAN	SURVEYED	DATE
	PLOTTED	
NOTE BOOK NO.	NOTES CHECKED BY	
	RT OF WAY CHECKED BY	



PROFILE	SURVEYED	DATE
	PLOTTED	
NOTE BOOK NO.	GRADES CHECKED BY	
	STRUCTURE NOTATIONS CHECKED BY	

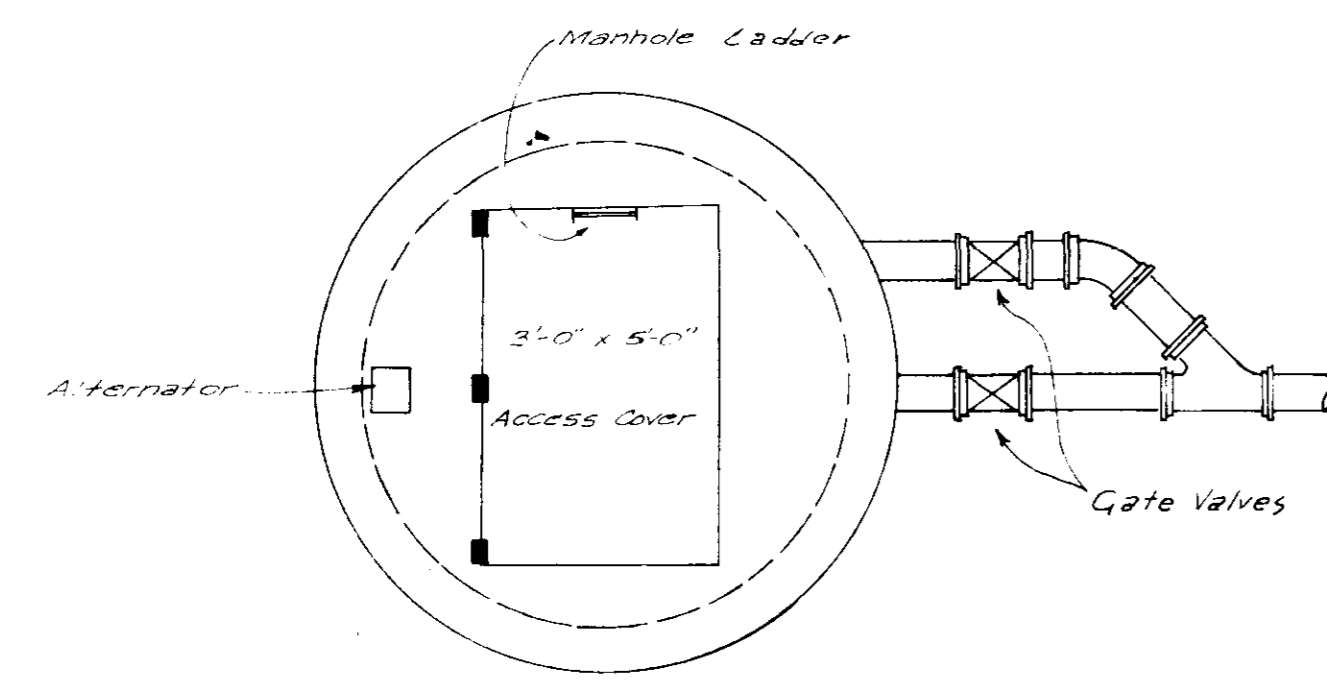


HIGHWAY FEDERAL AID DISTRICT 1
 PLATE 1-SINGLE PLAN AND PROFILE-FULL DOT
 TELETYPE
 PRINTED IN U.S.A.

PWP-00800

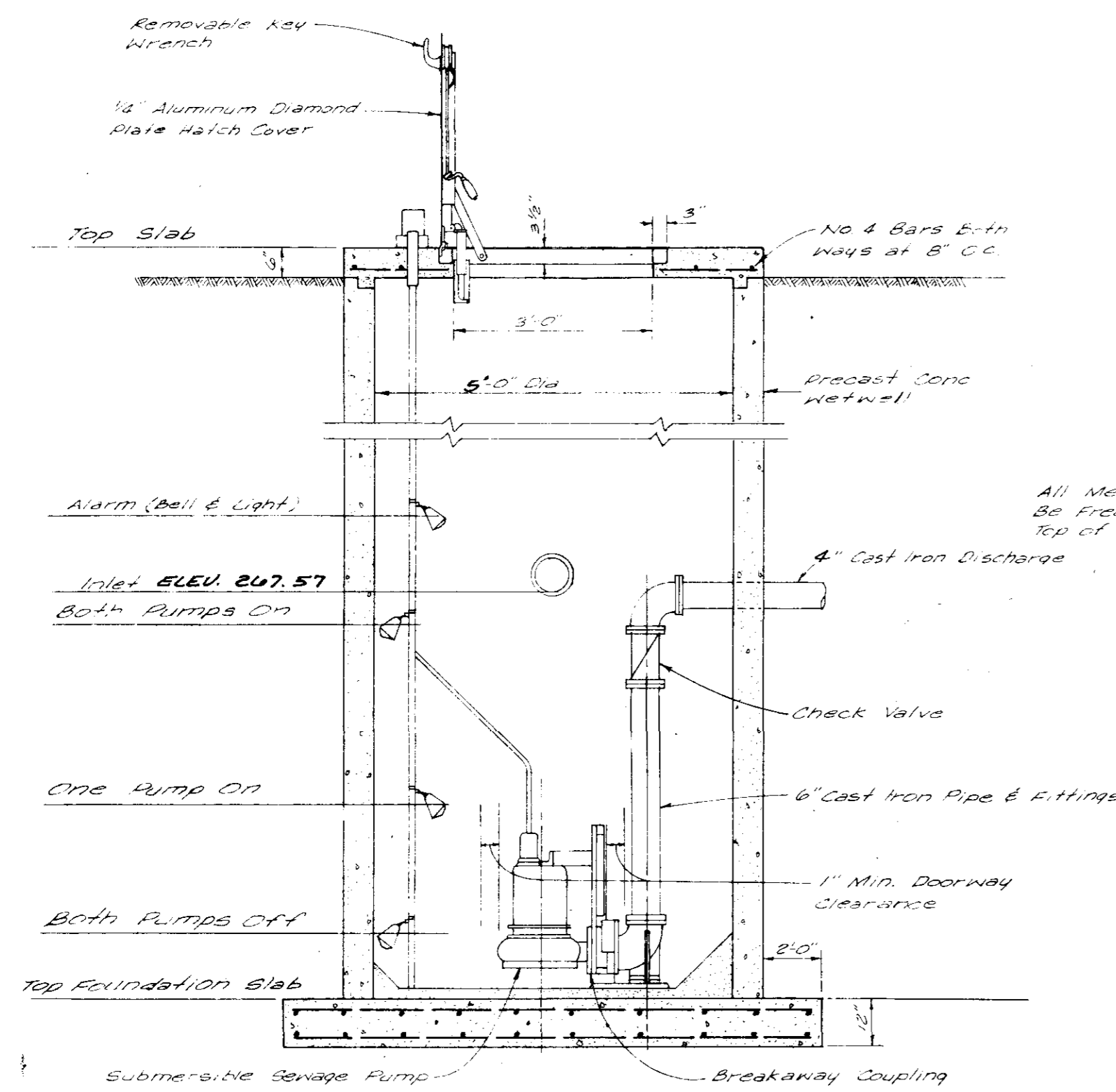
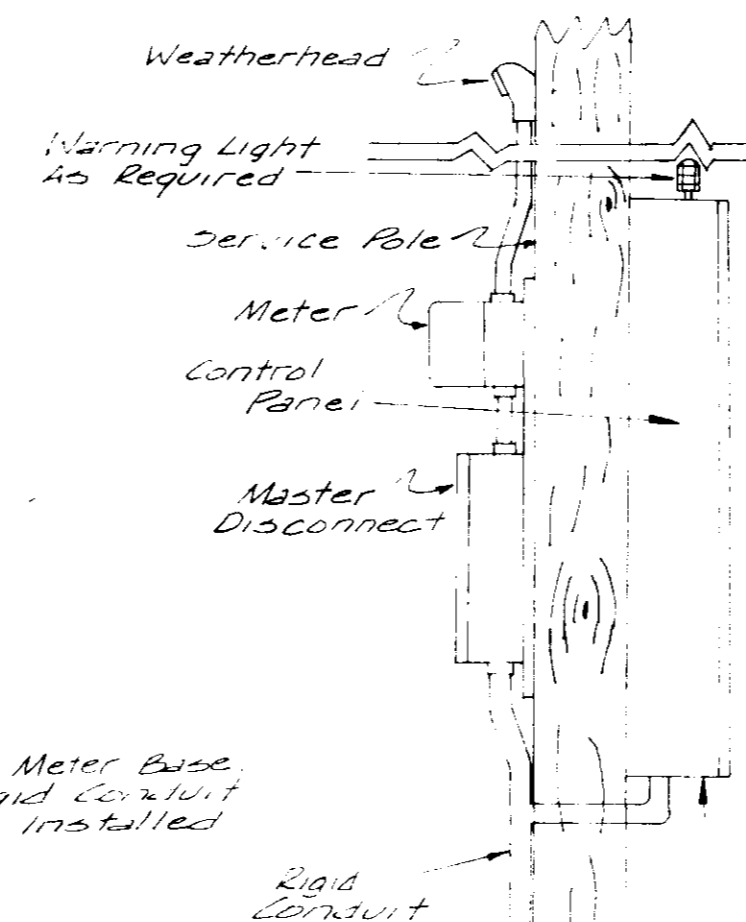
INC. MS
 SHEET
 OF 2

Harbour Pines
 Lift Station

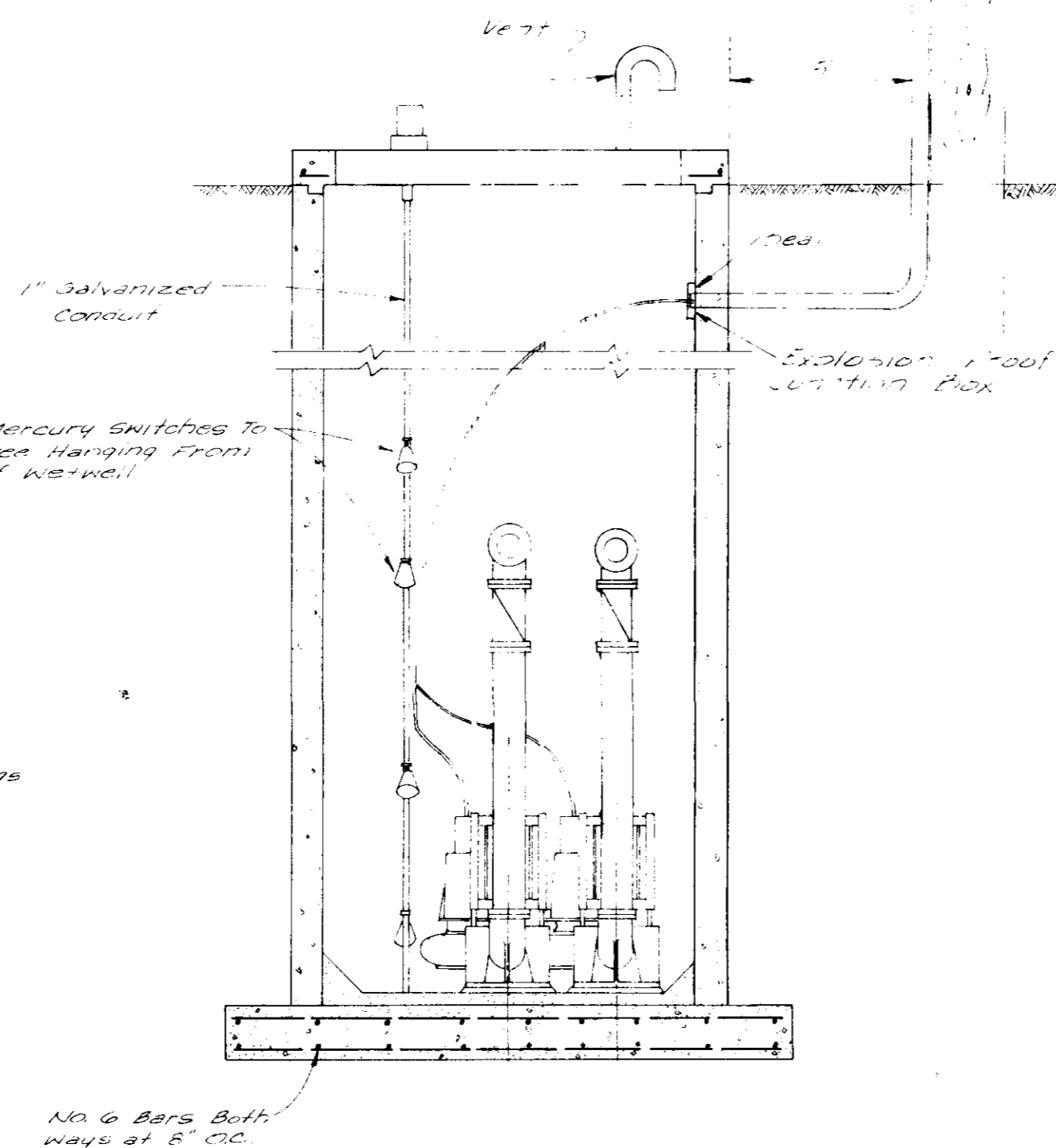


PLAN
N.T.S.

Service Pole, Weatherhead, Meter Base, Master Disconnect and Rigid Conduit shall be furnished and installed by contractor.



ELEVATION
N.T.S.



ELEVATION
N.T.S.

Operating Conditions	Top Foundation Slab	Both Pumps Off	One Pump On	Both Pumps On	Alarm	Top Slab	Inlet
150 G.P.M. @ 37 FT. T.O.H.	263.30	265.30	266.50	267.57	267.10	284.50	267.57

DETAILS - WASTEWATER PUMPING STATION

**HARBOUR PINES
MOBILE HOME PARK**

WAGGONER ENGINEERING INC.
Consulting Engineers Jackson/Brantley, Miss.

DRAWN BY J.W.P.	DATE OCT. 1988	SHEET NO. 2 OF 2
CHECKED BY D.S.B.	SCALE	