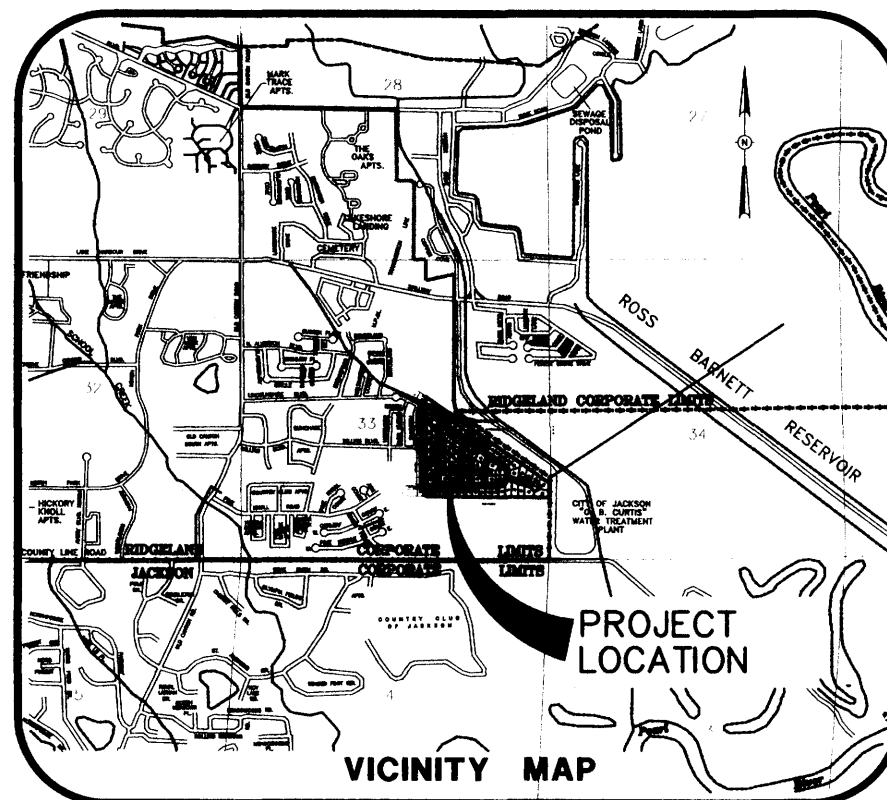


# RECORD DRAWINGS

## FOR

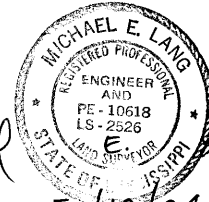
# BLACKTHORNE I

## (HAWTHORN GREEN - PART 4A)



### DRAWING INDEX

- 1 - COVER SHEET
- 2 - GEOMETRIC LAYOUT
- 4 - DRAINAGE LAYOUT
- 5 - SEWER AND WATER LAYOUT
- 5A - SEWER AND WATER SERVICE LAYOUT
- 6 - EROSION, SEDIMENT AND STORMWATER CONTROL PLAN
- 7 - PLAN AND PROFILE - LINCOLNSHIRE BOULEVARD (STA. 1+00 TO 16+26.83)
- 8 - PLAN AND PROFILE - SPRINGFIELD COURT (STA. 1+00 TO 7+26.51)  
PLAN AND PROFILE - OLD SQUARE COURT (STA. 1+00 TO STA. 4+20.42)
- 9 - PLAN AND PROFILE - BLACKTHORNE LANE (STA. 1+00 TO STA. 7+74.21)
- 10 - PLAN AND PROFILE - NAYLOR LANE (STA. 1+00 TO 5+99.69)  
PLAN AND PROFILE - TRINITY LANE (STA. 1+00 TO STA. 4+27.47)
- 11 - PLAN AND PROFILE - DRAINLINE "A" (STA. 7+75 TO 14+24.04)
- 12 - CITY OF RIDGELAND STANDARD DETAILS
- 13 - CITY OF RIDGELAND STANDARD DETAILS
- 14 - CITY OF RIDGELAND STANDARD DETAILS
- 15 - CITY OF RIDGELAND STANDARD DETAILS
- 16 - CITY OF RIDGELAND STANDARD DETAILS

  
 Michael E. Lang  
 5/12/04

DRAWING NO. PROJECTS\2003\030001\HWG-PART4\HWG4-COV.DWG

**H D LANG AND ASSOCIATES, INC.**

POST OFFICE BOX 16085

JACKSON, MISSISSIPPI 39236

601-362-4886

DEVELOPER

**SOUTH MADISON COUNTY  
DEVELOPMENT COMPANY, INC.  
POST OFFICE BOX 100  
MADISON, MISSISSIPPI 39130**

LOCATION

**SITUATED IN THE  
NE 1/4 OF THE SE 1/4 OF  
SECTION 33, TOWNSHIP 7 NORTH - RANGE 2 EAST  
CITY OF RIDGELAND  
MADISON COUNTY, MISSISSIPPI**

DATE

04-06-04  
04-21-04

REVISION

RECORD DRAWINGS  
REVISED NAME

BY

JOT  
JOT

DRAWN BY: C.L.S.

DATE: 04-21-03

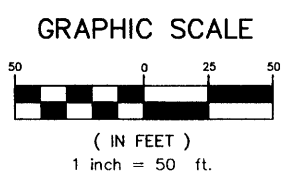
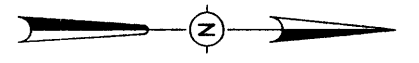
SCALE:

BOOK: PAGE:

PROJECT NO.: 03-001

SHEET

1



**CENTRELINE CURVE DATA**

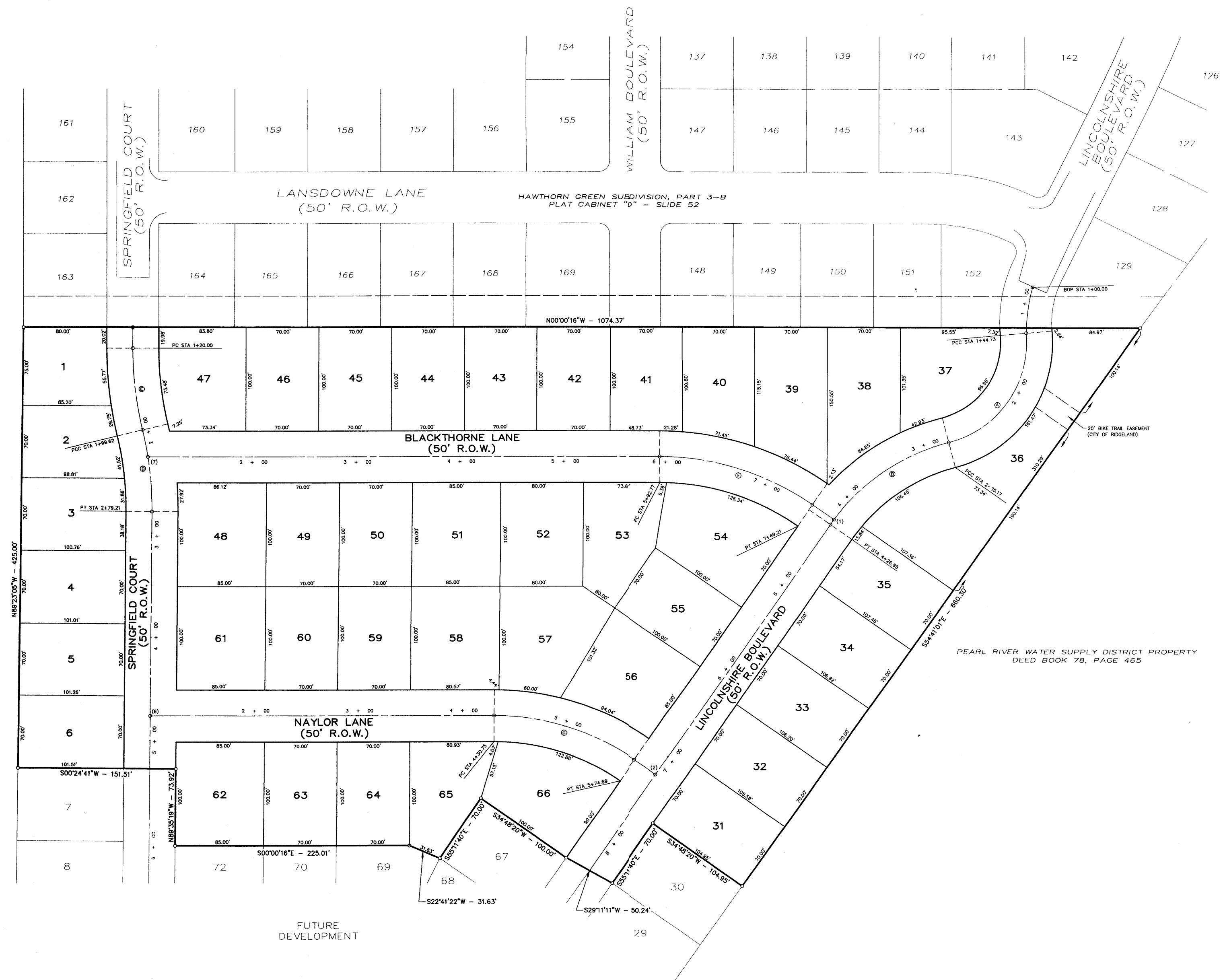
Δ = 80°27'40"	Δ = 40°31'12"	Δ = 140°72'3"
S = 57.29687'	D = 28.58865'	S = 17.74941'
H = 150.00'	E = 200.34'	R = 322.81'
T = 84.80'	T = 73.80'	L = 40.00'
L = 140.43'	L = 141.69'	L = 78.59'

Δ = 13°59'23"	Δ = 34°48'38"	Δ = 34°48'38"
S = 17.16184'	D = 22.28111'	S = 34.18028'
H = 333.65'	E = 237.50'	R = 236.50'
T = 40.50'	T = 80.37'	L = 14.28'
L = 79.62'	L = 156.44'	L = 143.93'

- CENTRELINE INTERSECTIONS**
- (1) STA 4+20.87 ENCLOSURE BOULEVARD = STA 7+14.23 LENOX LANE
  - (2) STA 7+20.85 ENCLOSURE BOULEVARD = STA 3+89.85 CHINA LANE
  - (3) STA 4+78.55 SPRINGFIELD COURT = STA 1+00 CHINA LANE
  - (4) STA 2+28.28 SPRINGFIELD COURT = STA 1+00 LENOX LANE

**NOTES:**  
 1. DIMENSIONS ALONG CURVES ARE CHORD DISTANCES.  
 2. AREA = 10.089 ACRES (MORE OR LESS)



CITY OF JACKSON PROPERTY  
 DEED BOOK 357, PAGE 762

PEARL RIVER WATER SUPPLY DISTRICT PROPERTY  
 DEED BOOK 78, PAGE 465

FUTURE  
 DEVELOPMENT

DRAWING NO. PROJECTS\2003\03001\HW-PA14\PART4\GCA-GEODWG

**H D LANG AND ASSOCIATES, INC.**  
 POST OFFICE BOX 16085 JACKSON, MISSISSIPPI 39236  
 601-362-4886

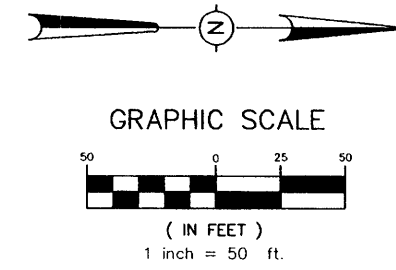
PROJECT  
**BLACKTHORNE I**  
 (HAWTHORN GREEN, PART 4A)

DESCRIPTION  
**GEOMETRIC LAYOUT**

DATE	REVISION	BY
05-09-03	ADDED BIKE EASEMENT	CLS
04-06-04	RECORD DRAWINGS	JOT
04-21-04	REVISED NAME/LOT 36	JOT

DRAWN BY: CLS  
 DATE: 04-07-03  
 SCALE: 1"=50'  
 BOOK: PAGE:  
 PROJECT NO.: 03-001

SHEET  
**2**



**CENTERLINE INTERSECTIONS**

(1) STA. 4+20.97 LINCOLNSHIRE BOULEVARD = STA. 7+74.21 LEXOX LANE  
 (2) STA. 7+20.95 LINCOLNSHIRE BOULEVARD = STA. 5+99.89 CHINA LANE  
 (6) STA. 4+76.50 SPRINGFIELD COURT = STA. 1+00 CHINA LANE  
 (7) STA. 2+26.28 SPRINGFIELD COURT = STA. 1+00 LEXOX LANE

**CENTERLINE CURVE DATA**

① Δ = 80°27'40"	② Δ = 40°31'12"	③ Δ = 14°07'23"
D = 57.29583'	D = 28.59861'	D = 17.74361'
R = 103.00'	R = 203.34'	R = 322.91'
T = 84.60'	T = 73.95'	T = 40.00'
L = 140.45'	L = 141.69'	L = 79.59'

④ Δ = 13°39'52"	⑤ Δ = 34°48'36"	⑥ Δ = 34°48'36"
D = 17.16194'	D = 22.25111'	D = 24.85278'
R = 333.85'	R = 357.60'	R = 236.90'
T = 40.00'	T = 80.72'	T = 74.26'
L = 79.62'	L = 156.44'	L = 143.93'

**DRAINAGE STRUCTURE SCHEDULE**

CURB INLET 6	DBL CURB INLET 7	CURB INLET 8	DBL CURB INLET 9
15.7' RT OF STA. 4+38.10	15.7' RT OF STA. 4+35.15	15.7' RT OF STA. 4+39.22	15.7' LT OF STA. 4+04.04
D.A. = 0.59ac	D.A. = 0.80ac	D.A. = 0.68ac	D.A. = 0.82ac
∑ D.A. = 6.62ac	∑ D.A. = 6.03ac	∑ D.A. = 6.03ac	∑ D.A. = 1.57ac
TC = 11.1	TC = 8.5	TC = 8.3	TC = 8.3
I = 8.29	I = 8.35	I = 9.26	I = 9.35
Q = 80.2	Q = 76.9	Q = 54.7	Q = 50.1

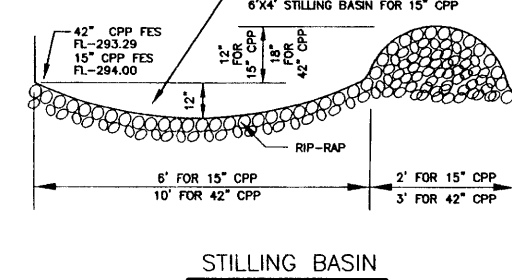
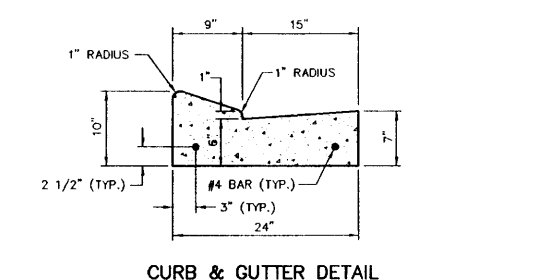
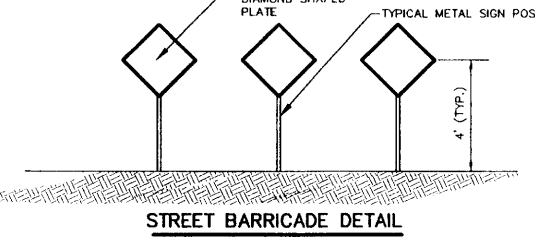
CURB INLET 10	DBL CURB INLET 11	CURB INLET 11A	CURB INLET 11B
15.7' RT OF STA. 3+51.38	15.7' RT OF STA. 3+51.38	15.7' LT OF STA. 1+30.73	15.7' LT OF STA. 1+37.25
D.A. = 0.43ac	D.A. = 1.15ac	D.A. = 0.32ac	D.A. = 0.20ac
∑ D.A. = 1.90ac	∑ D.A. = 1.90ac	∑ D.A. = 0.32ac	∑ D.A. = 0.20ac
TC = 7.5	TC = 7.3	TC = 5.9	TC = 5.7
I = 9.71	I = 9.81	I = 10.55	I = 10.67
Q = 13.8	Q = 8.5	Q = 2.5	Q = 1.6

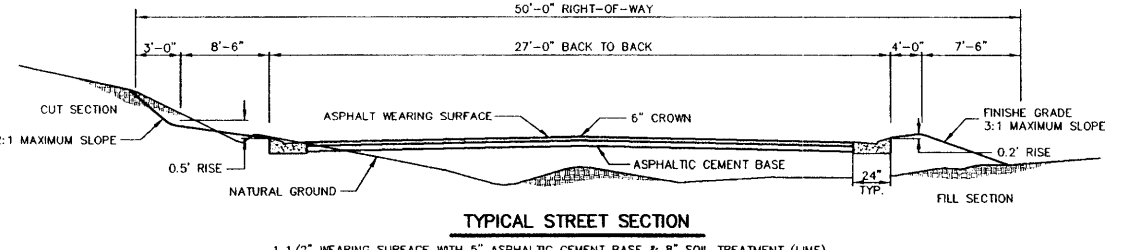
CURB INLET 19	CURB INLET 20	CURB INLET 21
21.5' RT OF STA. 4+42.07	20.3' RT OF STA. 4+03.08	15.7' LT OF STA. 4+09.65
D.A. = 0.55ac	D.A. = 0.27ac	D.A. = 0.50ac
∑ D.A. = 1.32ac	∑ D.A. = 0.77ac	∑ D.A. = 0.50ac
TC = 11.0	TC = 10.6	TC = 10.0
I = 8.32	I = 8.49	I = 8.67
Q = 8.2	Q = 4.9	Q = 3.3

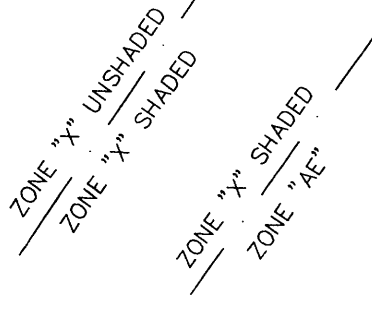
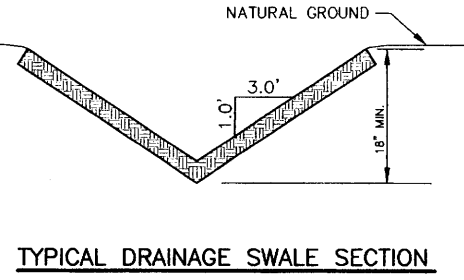
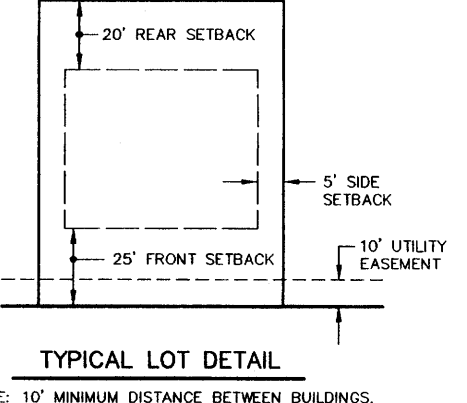
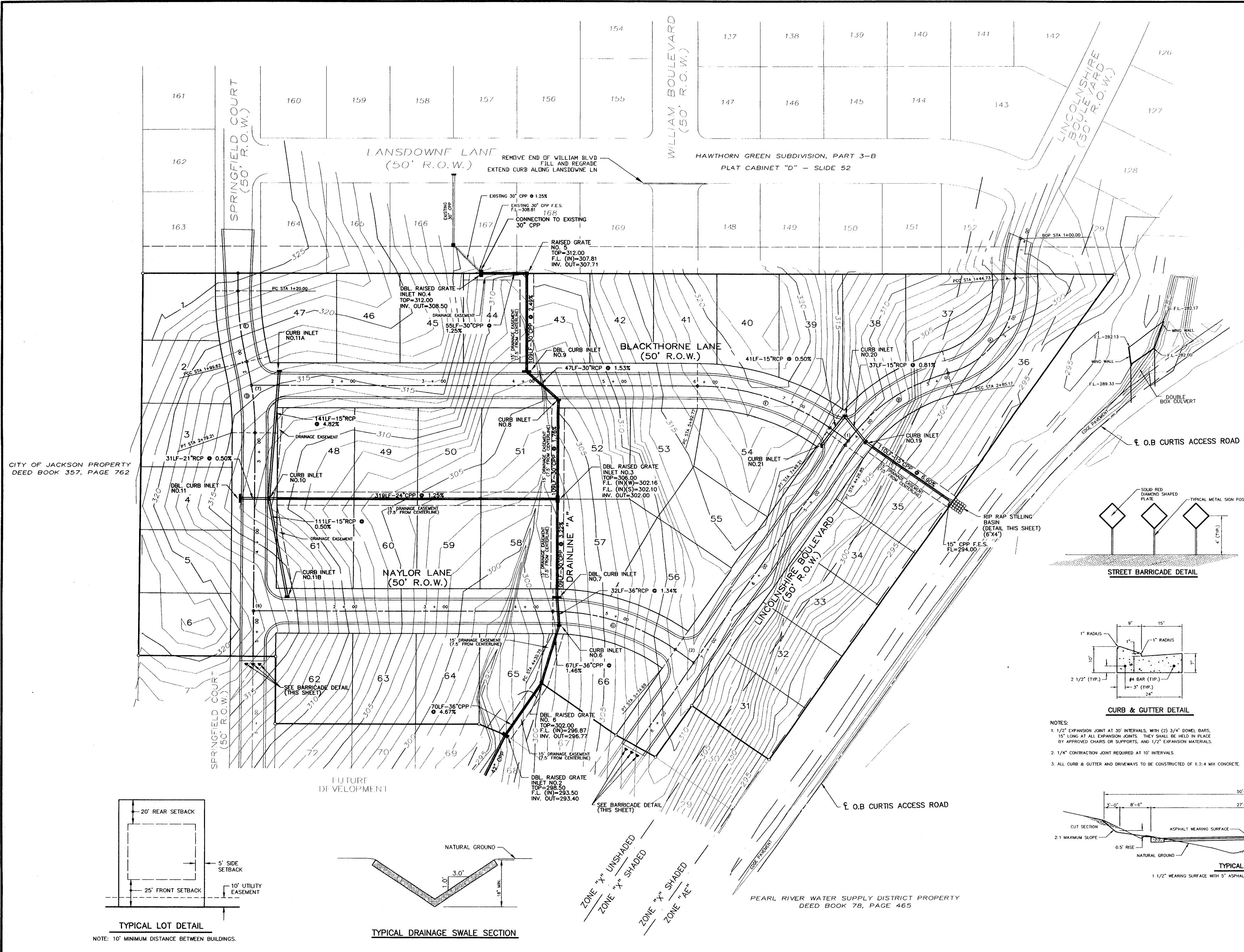
DRG 2	DRG 3	DRG 4
125.0' RT OF STA. 9+05.94	125.0' RT OF STA. 4+38.43	125.0' LT OF STA. 3+54.19
D.A. = 0.84ac	D.A. = 1.0ac	D.A. = 0.75ac
∑ D.A. = 7.46ac	∑ D.A. = 5.23ac	∑ D.A. = 0.75ac
TC = 11.8	TC = 6.5	TC = 6.5
I = 8.06	I = 8.63	I = 10.22
Q = 84.2	Q = 73.0	Q = 44.8



- NOTES:**
- 1/2" EXPANSION JOINT AT 30' INTERVALS, WITH (2) 3/4" DOWEL BARS, 15' LONG AT ALL EXPANSION JOINTS. THEY SHALL BE HELD IN PLACE BY APPROVED CHAIRS OR SUPPORTS, AND 1/2" EXPANSION MATERIALS.
  - 1/4" CONTRACTION JOINT REQUIRED AT 10' INTERVALS.
  - ALL CURB & GUTTER AND DRIVEWAYS TO BE CONSTRUCTED OF 1:2:4 MIX CONCRETE.

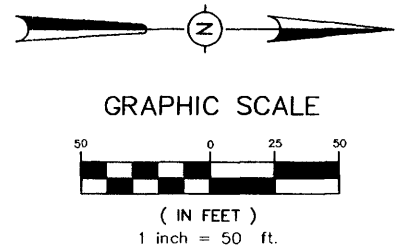
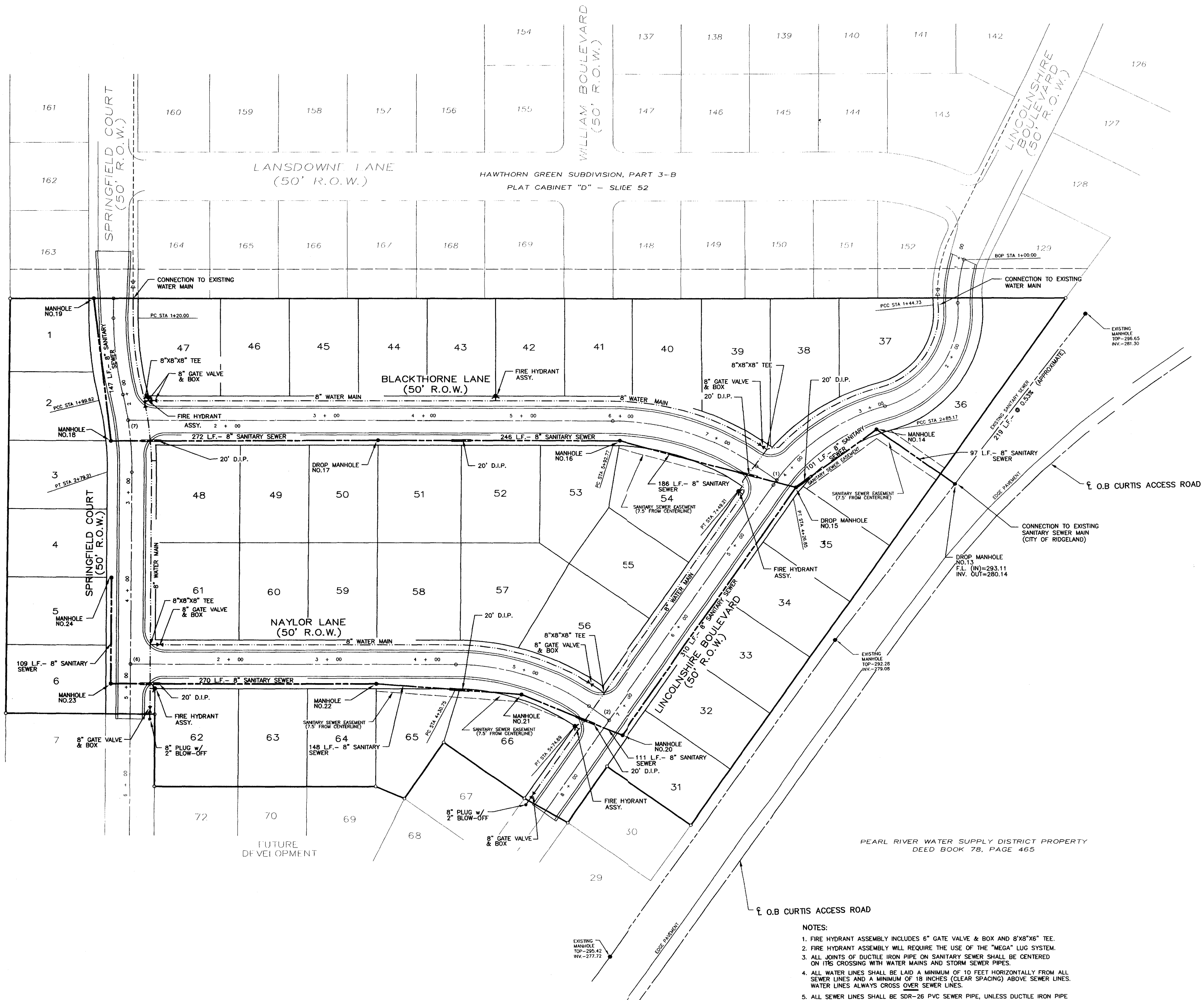


- NOTES:**
- THIS PROPERTY LIES WITHIN THE LIMITS ESTABLISHED FOR ZONE "AE", "X" (SHADED AND NO SHADING) ACCORDING TO FIRM MAP NUMBER 28089C0340 D, EFFECTIVE DECEMBER 16, 1988.
  - FLOOD LINES INTERPOLATED FROM FIRM MAP NUMBER 28089C0340 D.



DRAWING NO. PROJECTS\2003\030001\HOW-PART4\PART4\H04-DC.DWG

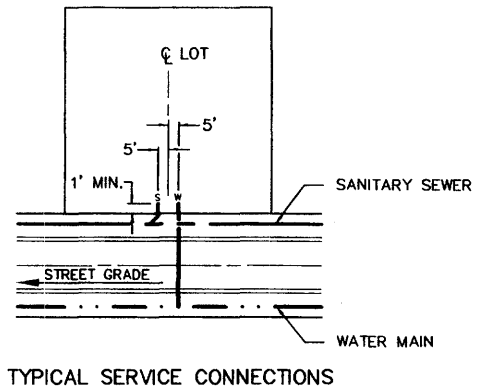
<b>H D LANG AND ASSOCIATES, INC.</b> POST OFFICE BOX 16085 JACKSON, MISSISSIPPI 39236 601-362-4886	PROJECT	DESCRIPTION	DATE	REVISION	BY	DRAWN BY: CLS	SHEET
	BLACKTHORNE I (HAWTHORN GREEN, PART 4A)	DRAINAGE LAYOUT	05-09-03	REVISED PER RIDGELAND	CLS	DATE: 04-07-03	4
			04-06-04	RECORD DRAWINGS	JOT	SCALE: 1"=50'	
			04-21-04	REVISED NAME/LOT 36	JOT	BOOK: PAGE:	
			5-12-04	REVISE AS-BUILTS	D.L.M.	PROJECT NO.: 03-001	



- CENTERLINE INTERSECTIONS:**
- (1) STA. 4+20.97 LINCOLNSHIRE BOULEVARD = STA. 7+74.21 LENOX LANE
  - (2) STA. 7+20.95 LINCOLNSHIRE BOULEVARD = STA. 5+92.69 CHINA LANE
  - (6) STA. 4+76.50 SPRINGFIELD COURT = STA. 1+00 CHINA LANE
  - (7) STA. 2+26.29 SPRINGFIELD COURT = STA. 1+00 LENOX LANE

CITY OF JACKSON PROPERTY DEED BOOK 357, PAGE 762

PEARL RIVER WATER SUPPLY DISTRICT PROPERTY DEED BOOK 78, PAGE 465



- NOTES:**
1. FIRE HYDRANT ASSEMBLY INCLUDES 6" GATE VALVE & BOX AND 8"x8"x6" TEE.
  2. FIRE HYDRANT ASSEMBLY WILL REQUIRE THE USE OF THE "MEGA" LUG SYSTEM.
  3. ALL JOINTS OF DUCTILE IRON PIPE ON SANITARY SEWER SHALL BE CENTERED ON ITS CROSSING WITH WATER MAINS AND STORM SEWER PIPES.
  4. ALL WATER LINES SHALL BE LAID A MINIMUM OF 10 FEET HORIZONTALLY FROM ALL SEWER LINES AND A MINIMUM OF 18 INCHES (CLEAR SPACING) ABOVE SEWER LINES. WATER LINES ALWAYS CROSS OVER SEWER LINES.
  5. ALL SEWER LINES SHALL BE SDR-26 PVC SEWER PIPE, UNLESS DUCTILE IRON PIPE IS INDICATED. ALL WATER LINES SHALL BE C-900 PVC APPROVED WATER PIPE.

**NOTE:** THE CONTRACTOR SHALL PROVIDE A 3/4" WATER SERVICE AND A 6" SANITARY SEWER SERVICE TO EACH LOT AS DIRECTED BY THE ENGINEER.

DRAWING NO. PROJECTS\2003\03001\HW-PART A\PART A\HW-SWD.DWG

**H D LANG AND ASSOCIATES, INC.**  
 POST OFFICE BOX 16085 JACKSON, MISSISSIPPI 39236  
 601-362-4886

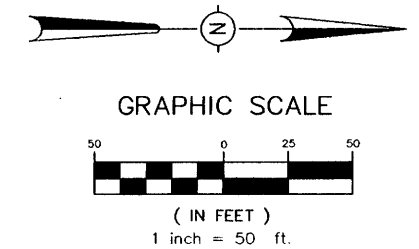
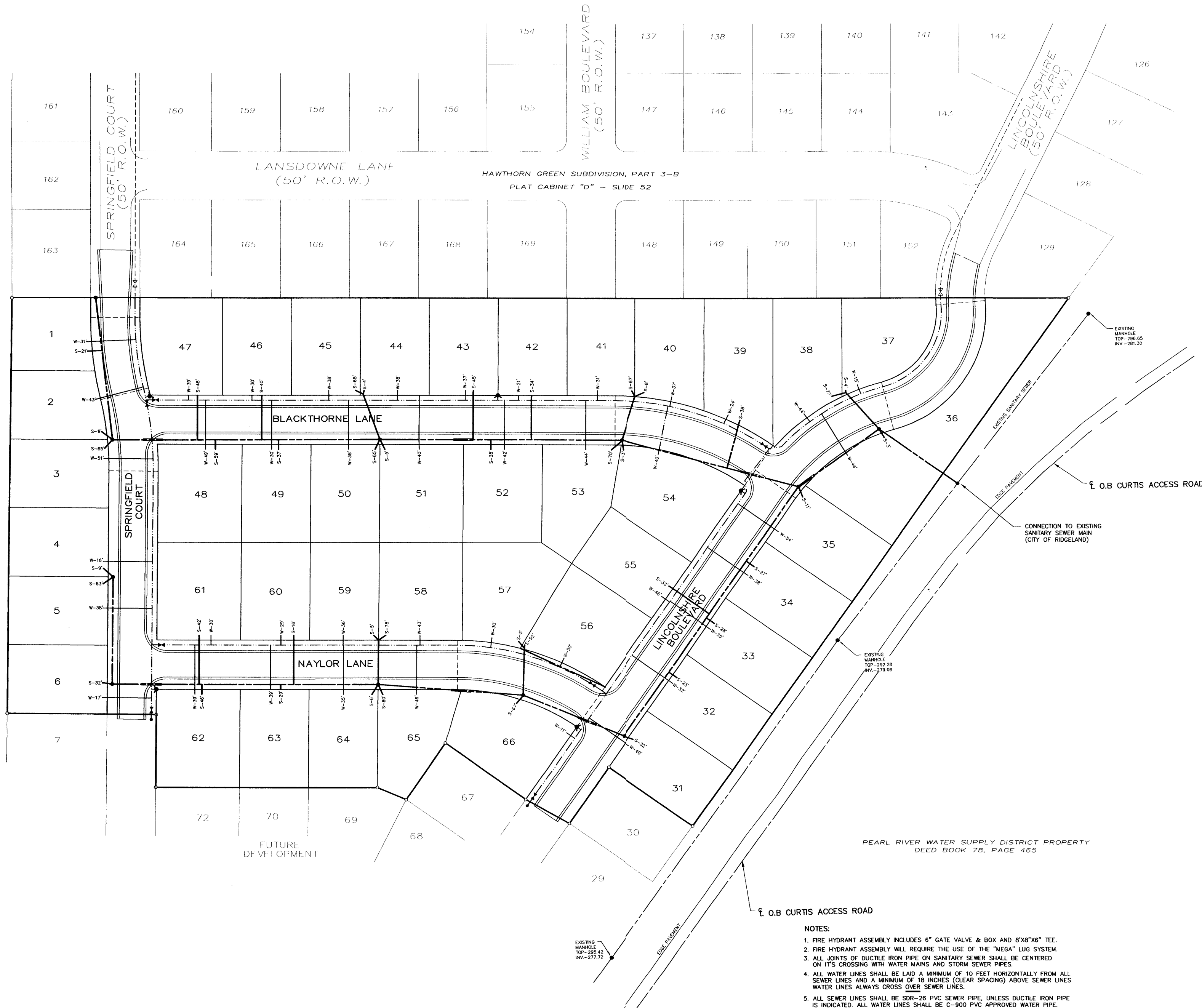
PROJECT  
**BLACKTHORNE I (HAWTHORN GREEN, PART 4A)**

DESCRIPTION  
**SEWER & WATER LAYOUT**

DATE	REVISION	BY	DRAWN BY:
04-06-04	RECORD DRAWINGS	JOT	CLS
04-21-04	REVISED NAME/LOT 36	JOT	
5-12-04	REVISE AS-BUILT	D.L.M.	

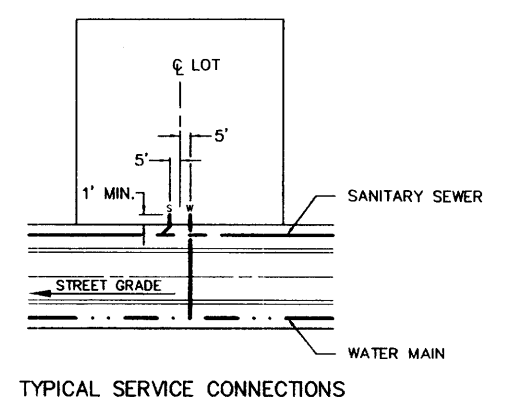
DATE: 04-10-03  
 SCALE: 1"=50'  
 BOOK: PAGE:  
 PROJECT NO.: 03-001

SHEET  
**5**



CITY OF JACKSON PROPERTY  
DEED BOOK 357, PAGE 762

PEARL RIVER WATER SUPPLY DISTRICT PROPERTY  
DEED BOOK 78, PAGE 465



- NOTES:**
1. FIRE HYDRANT ASSEMBLY INCLUDES 6" GATE VALVE & BOX AND 8"x8"x6" TEE.
  2. FIRE HYDRANT ASSEMBLY WILL REQUIRE THE USE OF THE "MEGA" LUG SYSTEM.
  3. ALL JOINTS OF DUCTILE IRON PIPE ON SANITARY SEWER SHALL BE CENTERED ON ITS CROSSING WITH WATER MAINS AND STORM SEWER PIPES.
  4. ALL WATER LINES SHALL BE LAID A MINIMUM OF 10 FEET HORIZONTALLY FROM ALL SEWER LINES AND A MINIMUM OF 18 INCHES (CLEAR SPACING) ABOVE SEWER LINES. WATER LINES ALWAYS CROSS OVER SEWER LINES.
  5. ALL SEWER LINES SHALL BE SDR-26 PVC SEWER PIPE, UNLESS DUCTILE IRON PIPE IS INDICATED. ALL WATER LINES SHALL BE C-900 APPROVED WATER PIPE.

**NOTE:**  
THE CONTRACTOR SHALL PROVIDE A 3/4" WATER SERVICE AND A 6" SANITARY SEWER SERVICE TO EACH LOT AS DIRECTED BY THE ENGINEER.

DRAWING NO. PROJECTS\2003\03001\WDR-PART4\PART-A\104-SWS.DWG

**H D LANG AND ASSOCIATES, INC.**  
POST OFFICE BOX 16085 JACKSON, MISSISSIPPI 39236  
601-362-4186

PROJECT  
**BLACKTHORNE I  
(HAWTHORN GREEN, PART 4A)**

DESCRIPTION  
**SEWER & WATER SERVICE LAYOUT**

DATE	REVISION	BY
04-06-04	RECORD DRAWINGS	JOT
04-21-04	REVISED NAME/LOT 36	JOT
5-12-04	REVISE AS-BUILTS	D.L.M.

DRAWN BY: CLS  
DATE: 06-26-03  
SCALE: 1"=50'  
BOOK: PAGE:  
PROJECT NO.: 03-001

SHEET  
**5A**



**SYMBOLS FOR EROSION AND SEDIMENT CONTROL PRACTICES**

**TEMPORARY PRACTICES**

- CHECK DAM
- CONSTRUCTION ENTRANCE / EXIT
- DIVERSION
- DUST CONTROL
- SEDIMENT BASIN
- SILT FENCE
- STORM DRAIN INLET PROTECTION (SILT FENCE, STRAW BALE)
- STRAW BALE BARRIER

**PERMANENT PRACTICES**

- BUFFER ZONE
- DETENTION BASIN
- DIVERSION
- GRADE STAB. STRUCTURE
- GRASSED WATERWAY
- LAND GRADING
- LEVEL GRADING
- LINED WATERWAY OR OUTLET
- PARKING LOT STORAGE
- PAVED FLUME
- ROCK OUTLET PROTECTION
- STORMWATER RETENTION BASIN

**VEGETATIVE PRACTICES**

- MULCHING
- PERMANENT SEEDING
- SODDING
- TEMPORARY SEEDING
- TOPSOILING
- TREE PRESERVATION AND PROTECTION
- TREES, SHRUBS, VINES AND GROUND COVER
- VEGETATIVE DUNE STABILIZATION

**COMPOSITE PRACTICES**

- VEGETATIVE STREAMBANK STAB.
- STRUCTURAL STREAMBANK STAB.
- RIPRAP

**PLANNED EROSION, SEDIMENT AND STORMWATER CONTROL PRACTICES**

- 1. STORM DRAIN INLET PROTECTION**  
TEMPORARY HAY BALE AND SILT FENCE COMBINATIONS WILL BE INSTALLED AT ALL CURB INLET AND GRATE INLET LOCATIONS.
- 2. LAND GRADING**  
EXCESS EXCAVATION FROM THE STREET RIGHTS OF WAY WILL BE PLACED ON THE LOTS OF LOWEST ELEVATION. ALL FILL MATERIALS WILL BE COMPACTED AND SLOPES WILL NOT EXCEED 3:1. ALL AREAS WILL RECEIVE SEEDING FOR STABILIZATION OF THE FILL MATERIAL UNTIL PERMANENT VEGETATION IS ESTABLISHED AFTER THE CONSTRUCTION OF THE INDIVIDUAL HOUSES.
- 3. ROCK OUTLET PROTECTION**  
A RIPRAP APRON WILL BE LOCATED AT THE OUTLET OF ALL CULVERTS TO PREVENT SCOUR.
- 4. PERMANENT SEEDING**  
ALL DISTURBED AREAS WILL BE PERMANENTLY SEEDDED AND MULCHED ONCE FINAL GRADE IS ESTABLISHED. THE LAND GRADING AREAS PREVIOUSLY MENTIONED WILL RECEIVE TEMPORARY SEEDING AS STATED.

**TEMPORARY SEEDING**

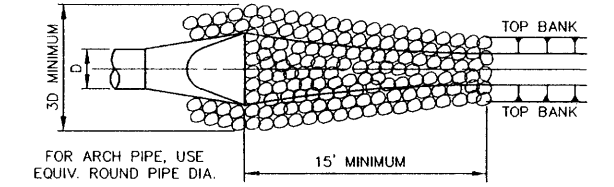
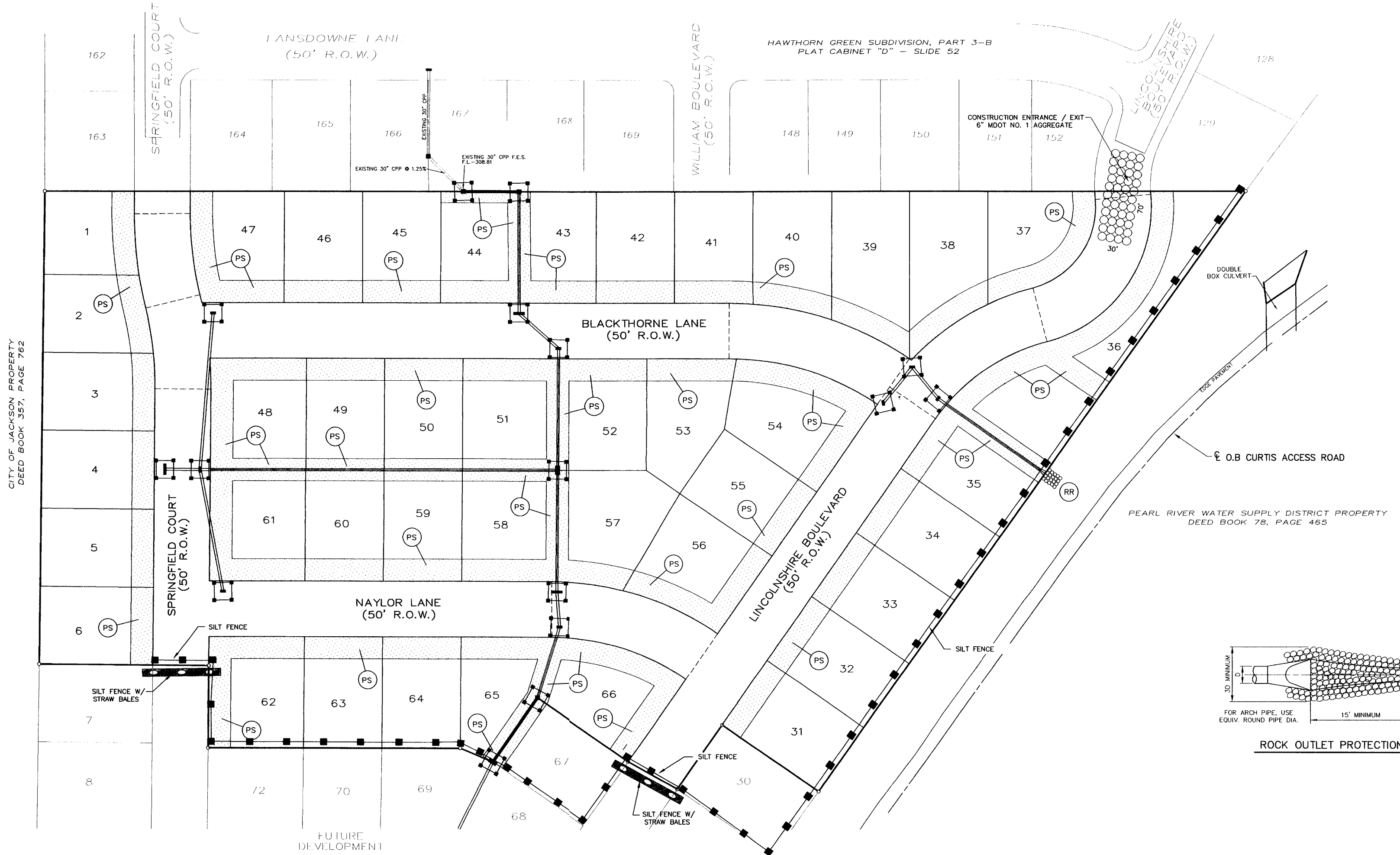
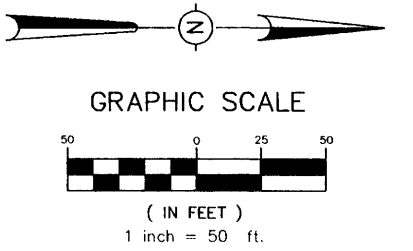
ALL FILL AREAS OUTSIDE OF PAVED AREAS SHALL RECEIVE TEMPORARY SEEDING OF ANNUAL RYEGRASS AT 40 LBS./AC. WITH 13/13/13 FERTILIZER AT 600 LBS./AC.  
ALL SLOPES SHALL RECEIVE TEMPORARY SEEDING AND FERTILIZER AND STRAW MULCH WITH ASPHALT TACK AT 1.5 TONS MULCH/AC. AND 100 GAL EMULSIFIED ASPHALT, GRADE SS-1 AT 100 GAL./TON MULCH.

**PERMANENT SEEDING**

PERMANENT SEEDING OF BERMUDA GRASS AT 15 LBS./AC. WITH 13/13/13 FERTILIZER AT 600 LBS./AC.

**MAINTENANCE PLAN**

- SHORT TERM**
1. ALL EROSION AND SEDIMENT CONTROL PRACTICES WILL BE CHECKED FOR STABILITY AND OPERATION FOLLOWING EVERY RUNOFF-PRODUCING RAINFALL BUT IN NO CASE LESS THAN EVERY WEEK. ANY NEEDED REPAIRS WILL BE MADE IMMEDIATELY TO MAINTAIN ALL PRACTICES AS DESIGNED.
  2. SEDIMENT WILL BE REMOVED FROM THE INLET PROTECTION DEVICES WHEN IT REACHES A MAXIMUM OF 6 INCHES DEEP. THE DEVICE WILL BE REPLACED AS NECESSARY TO MAINTAIN A BARRIER.
  3. ALL SEEDED AREAS WILL BE FERTILIZED AND RESEEDDED AS NECESSARY TO MAINTAIN A DENSE VEGETATIVE COVER.
- LONG TERM**
1. ALL VEGETATED AREAS WILL BE MAINTAINED IN ADEQUATE CONDITION TO PROVIDE PROPER GROUND COVER.
  2. AREAS WHERE VEGETATION IS LOST WILL BE FERTILIZED, SEEDDED AND MAINTAINED AS NECESSARY TO RESTORE PROPER GROUND COVER.
  3. STRUCTURAL MEASURES WILL BE EXAMINED AT LEAST ANNUALLY AND MAINTENANCE PERFORMED AS NEEDED.



**ROCK OUTLET PROTECTION**

DRAWING NO. PROJECTS\2003\03001\HG-PART-A\HG-EC.DWG

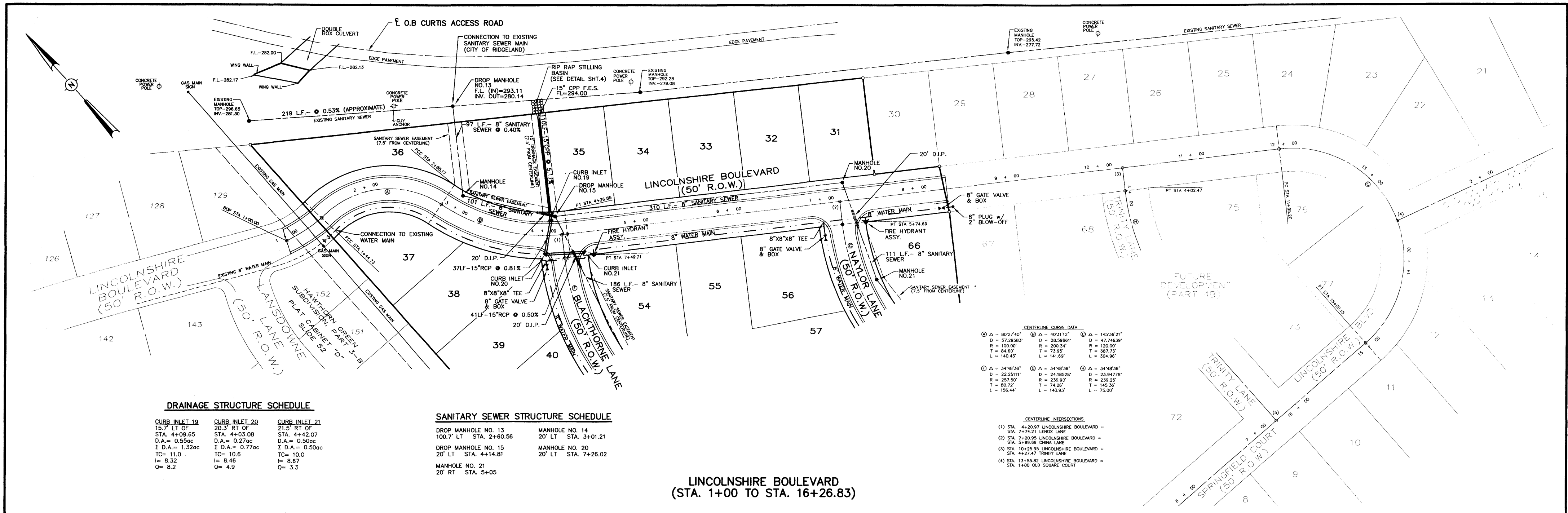
**H D LANG AND ASSOCIATES, INC.**  
JACKSON, MISSISSIPPI 39236  
601-362-4886

PROJECT  
**BLACKTHORNE I  
(HAWTHORN GREEN - PART 4A)**

DESCRIPTION  
**EROSION, SEDIMENT AND  
STORMWATER CONTROL PLAN**

DATE	REVISION	BY	DRAWN BY: CLS
04-06-04	RECORD DRAWINGS	JOT	DATE: 04-10-03
04-21-04	REVISED NAME/LOT 36	JOT	SCALE: 1"=50'
5-12-04	REVISE AS-BUILTS	D.L.M.	BOOK: PAGE:
			PROJECT NO.: 03-001

SHEET  
**6**



**DRAINAGE STRUCTURE SCHEDULE**

<b>CURB INLET 19</b> 15.7' LT OF STA. 4+09.65 D.A. = 0.55ac Σ D.A. = 1.32ac TC = 11.0 I = 8.32 Q = 8.2	<b>CURB INLET 20</b> 20.3' RT OF STA. 4+03.08 D.A. = 0.27ac Σ D.A. = 0.77ac TC = 10.6 I = 8.46 Q = 4.9	<b>CURB INLET 21</b> 21.5' RT OF STA. 4+42.07 D.A. = 0.50ac Σ D.A. = 0.50ac TC = 10.0 I = 8.67 Q = 3.3
---	---	---

**SANITARY SEWER STRUCTURE SCHEDULE**

<b>DROP MANHOLE NO. 13</b> 100.7' LT STA. 2+60.56	<b>MANHOLE NO. 14</b> 20' LT STA. 3+01.21
<b>DROP MANHOLE NO. 15</b> 20' LT STA. 4+14.81	<b>MANHOLE NO. 20</b> 20' LT STA. 7+26.02
<b>MANHOLE NO. 21</b> 20' RT STA. 5+05	

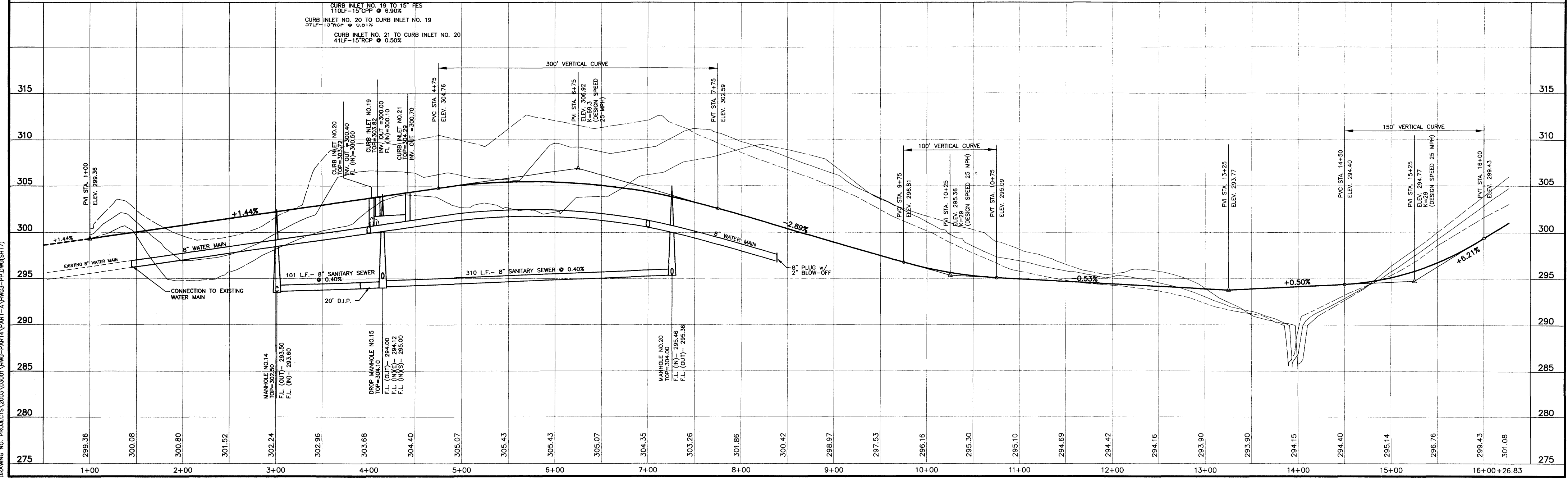
**CENTERLINE CURVE DATA**

① Δ = 80°27'40"	② Δ = 40°31'32"	③ Δ = 145°36'21"
D = 57.29583'	D = 28.59861'	D = 47.74639'
R = 100.00'	R = 200.34'	R = 120.00'
T = 84.60'	T = 73.95'	T = 387.13'
L = 140.43'	L = 141.89'	L = 304.96'

**CENTERLINE INTERSECTIONS**

(1) STA. 4+20.97 LINCOLNSHIRE BOULEVARD = STA. 7+74.21 LENOX LANE
(2) STA. 7+29.95 LINCOLNSHIRE BOULEVARD = STA. 5+99.66 CHINA LANE
(3) STA. 10+29.89 LINCOLNSHIRE BOULEVARD = STA. 4+27.47 TRINITY LANE
(4) STA. 13+55.82 LINCOLNSHIRE BOULEVARD = STA. 1+00 OLD SQUARE COURT

**LINCOLNSHIRE BOULEVARD  
(STA. 1+00 TO STA. 16+26.83)**



DRAWING NO. PROJECTS\2003\03001\HWG-PART4\PART-A\HWG3-PP.DWG(SHT7)

**H D LANG AND ASSOCIATES, INC.**

POST OFFICE BOX 16085 JACKSON, MISSISSIPPI 39236

601-362-4886

**PROJECT**

**BLACKTHORNE I  
(HAWTHORN GREEN - PART 4A)**

**DESCRIPTION**

**PLAN AND PROFILE  
LINCOLNSHIRE BOULEVARD  
(STA. 1+00 TO STA. 16+26.83)**

**DATE**

**REVISION**

**BY**

05-09-03	REVISED PER RIDGELAND	CLS
10-20-03	REVISED FINISH GRADES	CLS
04-06-04	RECORD DRAWINGS	JOT
04-21-04	REVISED STREET NAME/LOT 36	JOT

**DRAWN BY: CLS**

DATE: 04-08-04  
HORIZ.: 1"=50' / VERT.: 1"=5'  
BOOK: PAGE:  
PROJECT NO.: 03-001

**SHEET**

**7**

**SANITARY SEWER STRUCTURE SCHEDULE**

MANHOLE NO. 18  
20' RT STA. 2+45.20

MANHOLE NO. 19  
20' RT STA. 1+00

MANHOLE NO. 23  
20' RT STA. 4+96.50

MANHOLE NO. 24  
20' RT STA. 3+87.40

**DRAINAGE STRUCTURE SCHEDULE**

**CURB INLET 10**  
15.7' LT OF  
STA. 3+51.38  
D.A. = 0.43ac  
Σ D.A. = 1.90ac  
TC = 7.5  
I = 9.71  
Q = 13.8

**DBL CURB INLET 11**  
15.7' RT OF  
STA. 3+51.38  
D.A. = 1.15ac  
Σ D.A. = 1.15ac  
TC = 7.3  
I = 9.81  
Q = 8.5

**CURB INLET 11A**  
15.7' LT OF  
STA. 1+30.73  
D.A. = 0.32ac  
Σ D.A. = 0.32ac  
TC = 5.9  
I = 10.55  
Q = 2.5

**CURB INLET 11B**  
15.7' LT OF  
STA. 1+37.25  
D.A. = 0.20ac  
Σ D.A. = 0.20ac  
TC = 5.7  
I = 10.67  
Q = 1.6

**CENTERLINE CURVE DATA**

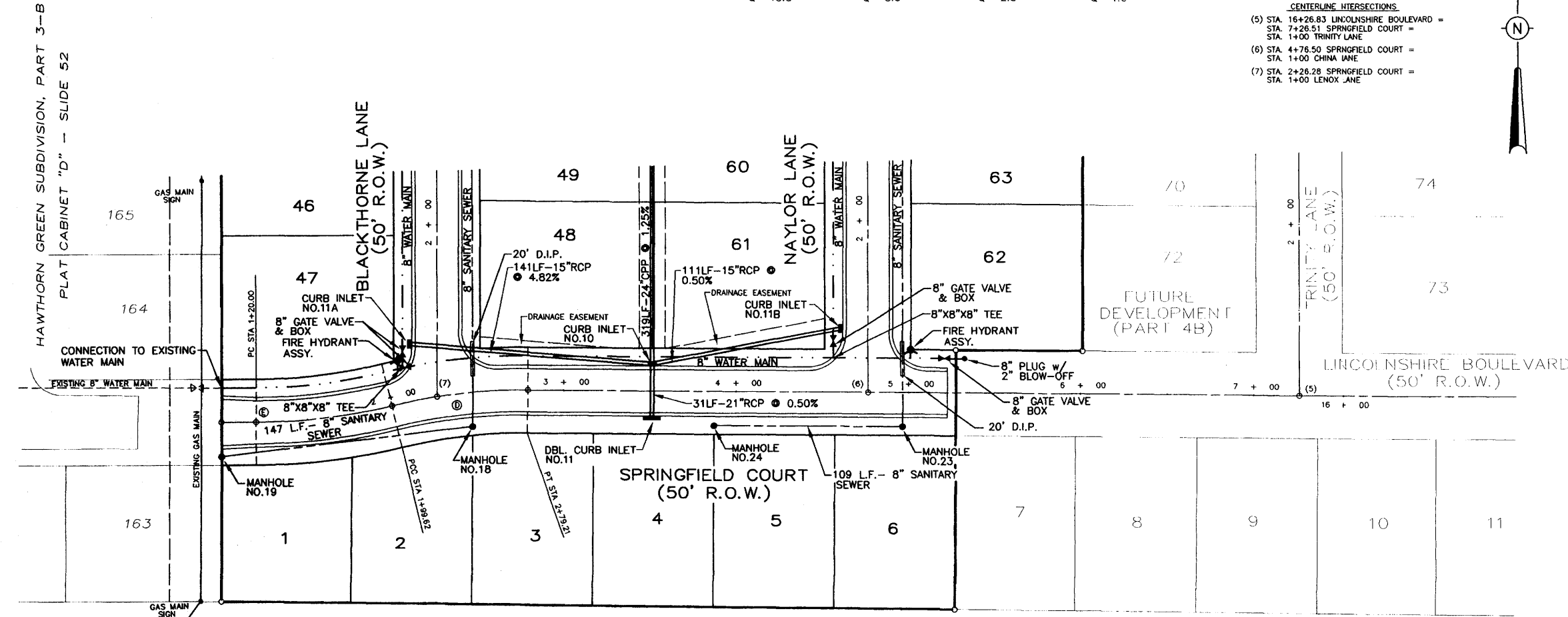
① Δ = 34°43'30" D = 477.6630'  
② Δ = 24°18'58" D = 23.94778'  
③ Δ = 236°00' R = 239.25'  
④ Δ = 74°36' T = 145.38'  
⑤ Δ = 143°93' L = 75.00'

**CENTERLINE INTERSECTIONS**

(5) STA. 19+25.83 LINCOLNSHIRE BOULEVARD =  
STA. 7+26.51 SPRINGFIELD COURT =

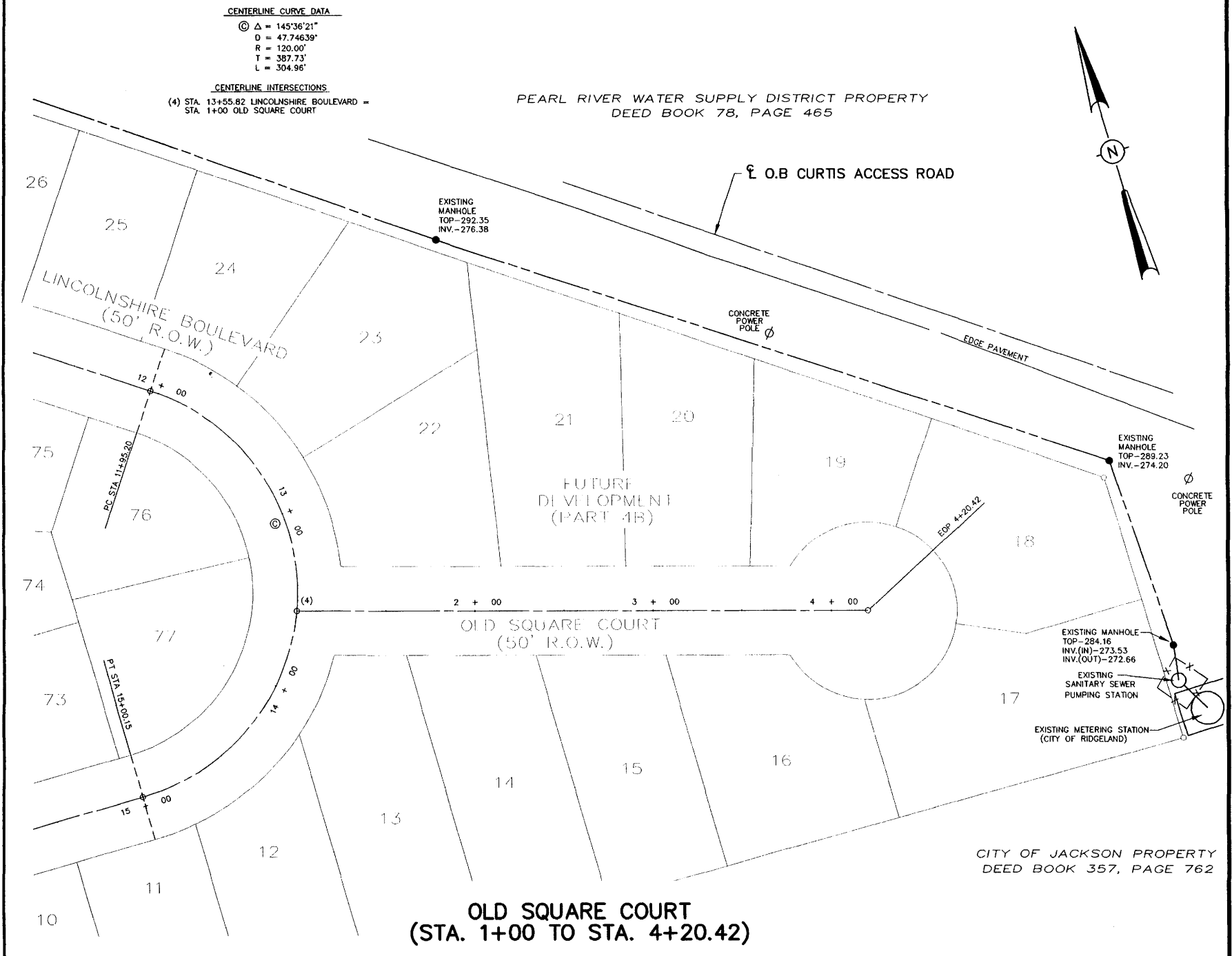
(6) STA. 4+78.50 SPRINGFIELD COURT =  
STA. 1+00 CHINA LANE =

(7) STA. 2+26.28 SPRINGFIELD COURT =  
STA. 1+00 LENOX JANE =



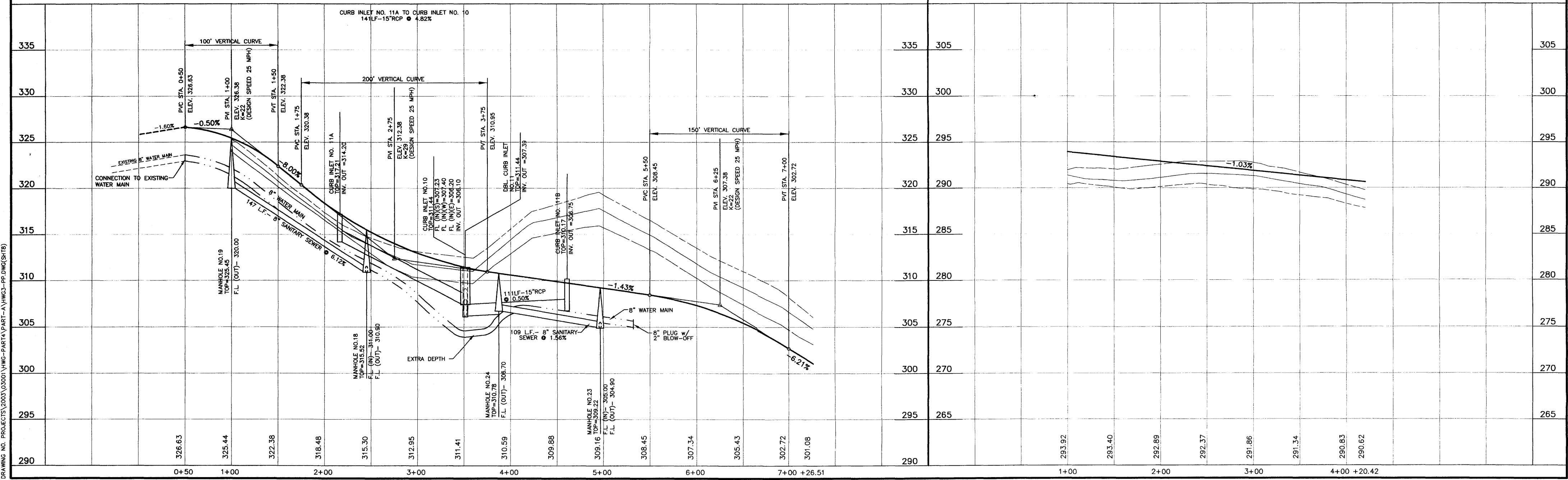
CITY OF JACKSON PROPERTY  
DEED BOOK 357, PAGE 762

**SPRINGFIELD COURT  
(STA. 1+00 TO STA. 7+26.51)**



CITY OF JACKSON PROPERTY  
DEED BOOK 78, PAGE 465

**OLD SQUARE COURT  
(STA. 1+00 TO STA. 4+20.42)**



DRAWING NO. PROJECTS\2003\03001\HWG-PART 4A\PART-A\HWG-PP-DWG(S)18

**H D LANG AND ASSOCIATES, INC.**  
POST OFFICE BOX 16085 JACKSON, MISSISSIPPI 39236  
601-362-4886

PROJECT  
**BLACKTHORNE I  
(HAWTHORN GREEN - PART 4A)**

DESCRIPTION  
**PLAN AND PROFILE  
SPRINGFIELD COURT  
(STA. 1+00 TO STA. 7+26.51)  
OLD SQUARE COURT  
(STA. 1+00 TO STA. 4+20.42)**

DATE	REVISION	BY
05-09-03	REVISED PER RIDGELAND	CLS
07-18-03	REVISED FINISH GRADE	CLS
04-06-04	RECORD DRAWINGS	JOT
04-21-04	REVISED STREET NAME	JOT
5-12-04	REVISE AS-BUILTS	D.L.M

DRAWN BY: CLS  
DATE: 04-08-03  
HORIZ.: 1"=50' / VERT.: 1"=5'  
BOOK: PAGE:  
PROJECT NO.: 03-001

SHEET  
**8**

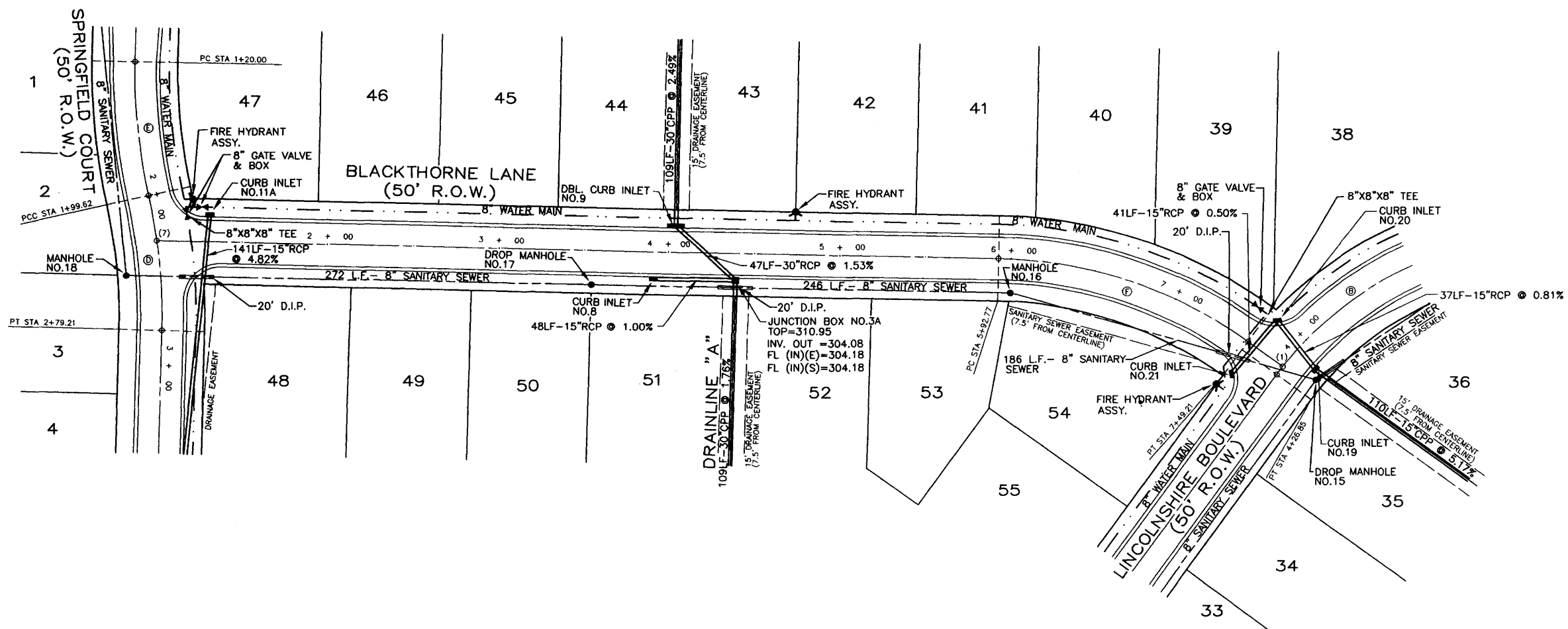


**SANITARY SEWER STRUCTURE SCHEDULE**

DROP MANHOLE NO. 15 20' LT STA. 4+14.81	MANHOLE NO. 16 20' RT STA. 6+00.59
DROP MANHOLE NO. 17 20' RT STA. 3+54.19	MANHOLE NO. 18 20' RT STA. 2+45.20

**DRAINAGE STRUCTURE SCHEDULE**

CURB INLET 8	DBL CURB INLET 9	CURB INLET 11A	CURB INLET 19	CURB INLET 20	CURB INLET 21
15.7' RT OF	15.7' LT OF	15.7' LT OF	15.7' LT OF	20.3' RT OF	21.5' RT OF
STA. 4+39.22	STA. 4+04.04	STA. 1+30.73	STA. 4+09.65	STA. 4+03.08	STA. 4+42.07
D.A. = 0.680c	D.A. = 0.820c	D.A. = 0.320c	D.A. = 0.550c	D.A. = 0.270c	D.A. = 0.500c
Σ D.A. = 2.250c	Σ D.A. = 1.570c	Σ D.A. = 0.320c	Σ D.A. = 1.320c	Σ D.A. = 0.770c	Σ D.A. = 0.500c
TC = 8.5	TC = 8.3	TC = 5.9	TC = 11.0	TC = 10.6	TC = 10.0
I = 9.26	I = 9.35	I = 10.55	I = 8.32	I = 8.46	I = 8.67
Q = 54.7	Q = 50.1	Q = 2.5	Q = 8.2	Q = 4.9	Q = 3.3



**CENTERLINE CURVE DATA**

① Δ = 40°31'15"	② Δ = 140°7'32"	③ Δ = 133°52'
D = 28.9861'	D = 17.74361'	D = 17.16194'
R = 200.34'	R = 322.91'	R = 333.85'
T = 73.95'	T = 40.00'	T = 40.00'
L = 141.69'	L = 79.55'	L = 79.62'

④ Δ = 34°48'36"

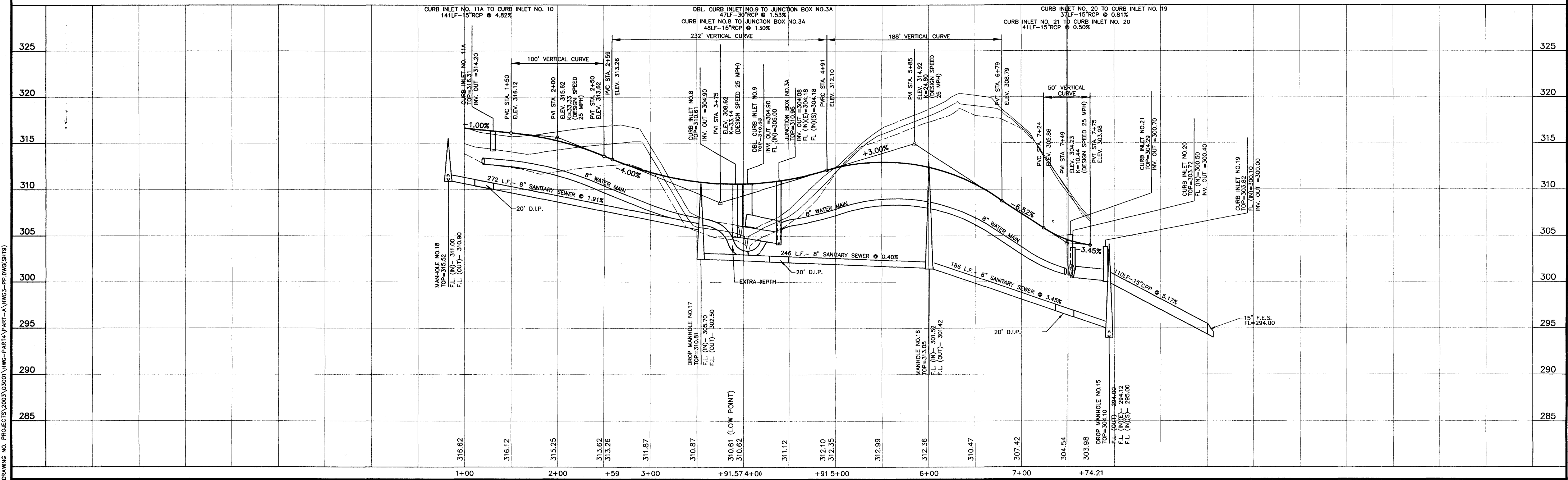
D = 22.25111'
R = 257.50'
T = 83.72'
L = 156.44'

**CENTERLINE INTERSECTIONS**

(1) STA. 4+20.97 LINCOLNSHIRE BOULEVARD - STA. 7+74.21 LENOX LANE

(7) STA. 2+26.28 SPRINGFIELD COURT - STA. 1+00 LENOX LANE

**BLACKTHORNE LANE  
(STA. 1+00 TO STA. 7+74.21)**



DRAWING NO. PROJECT(S) 2003.03001 VHW-PART 4A PART-A VHWL-PP DWG(S) 193

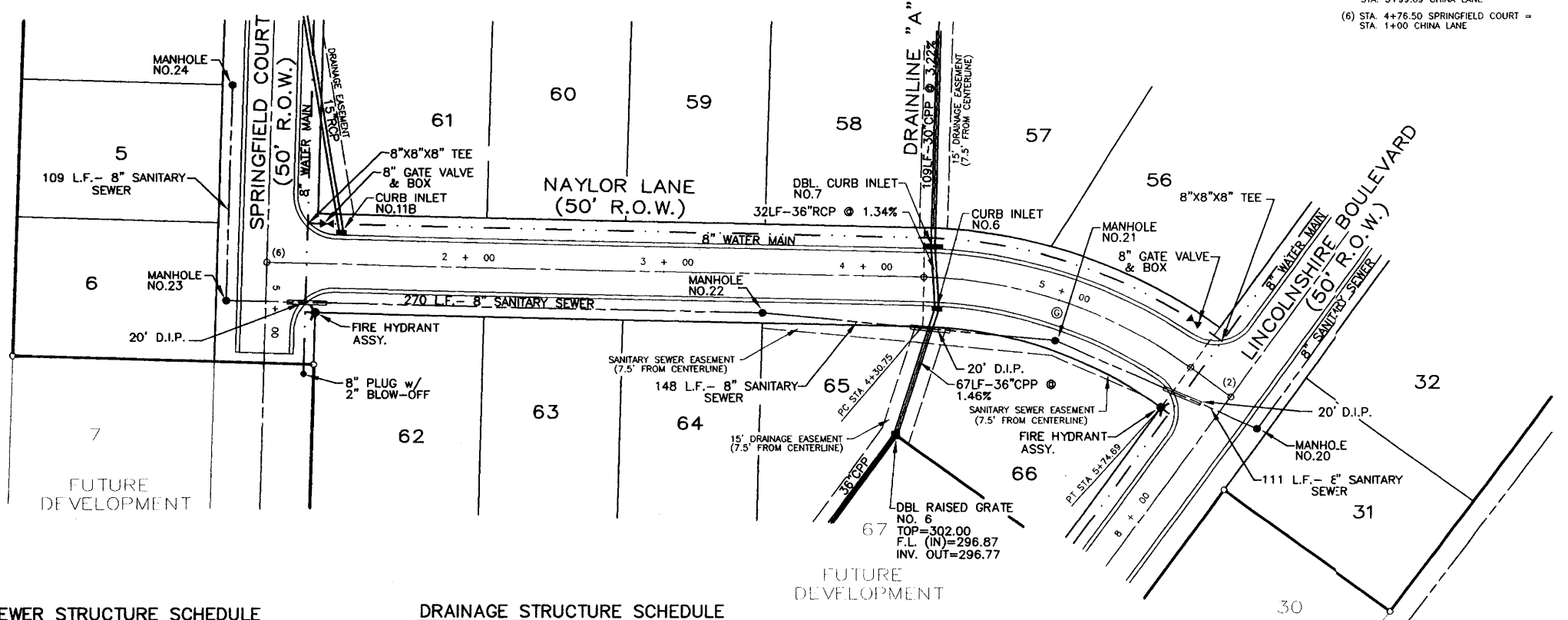
**H D LANG AND ASSOCIATES, INC.**  
 POST OFFICE BOX 16085 JACKSON, MISSISSIPPI 39236  
 601-362-4886

PROJECT **BLACKTHORNE I  
(HAWTHORN GREEN - PART 4A)**

DESCRIPTION **PLAN AND PROFILE  
LENOX LANE  
(STA. 1+00 TO STA. 7+74.21)**

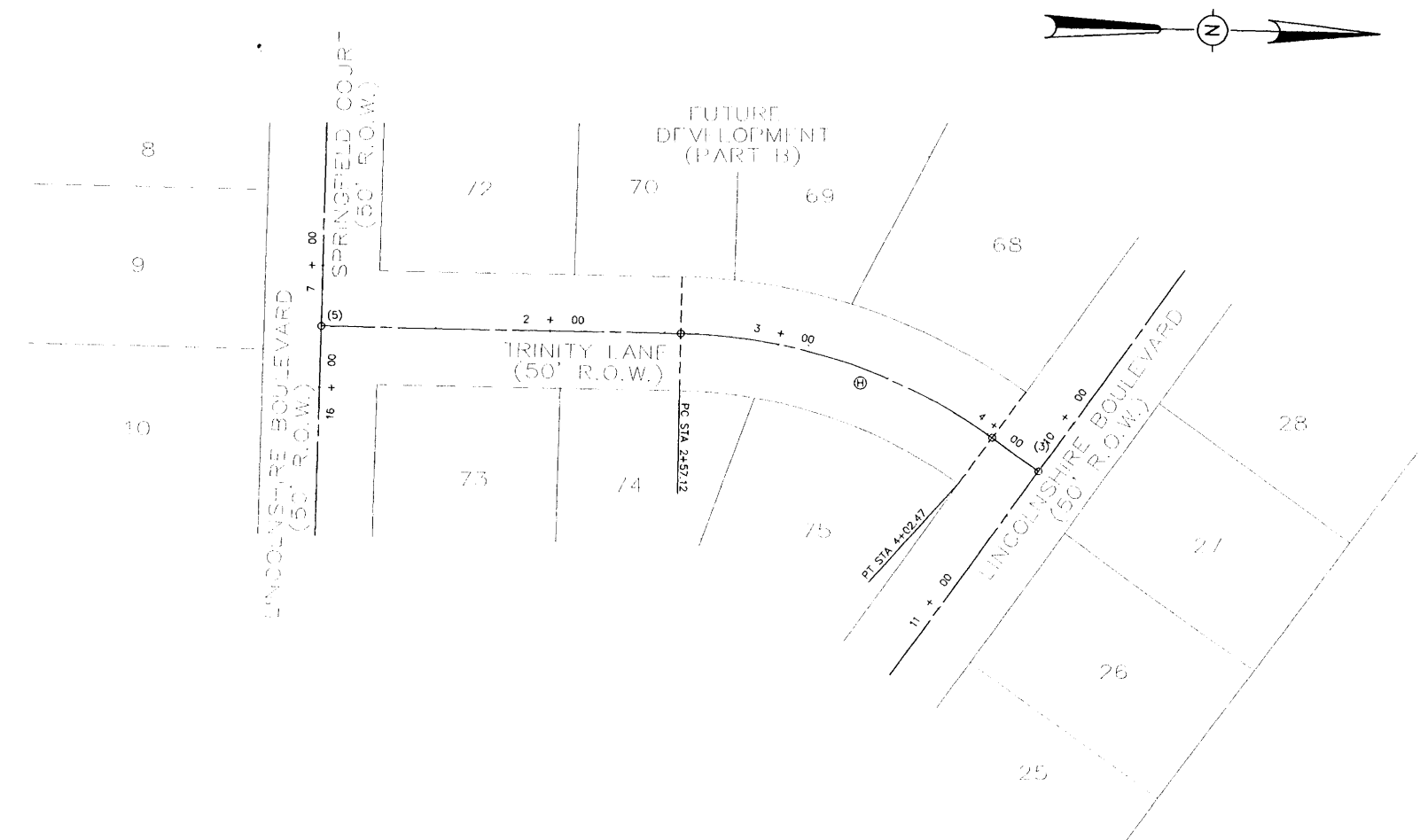
DATE	REVISION	BY	DRAWN BY:	SHEET
05-09-03	REVISED PER RIDGELAND	CLS	CLS	9
06-24-03	REVISED PER RIDGELAND (SITE-DIST.)	CLS	CLS	
10-20-03	REVISED FINISH GRADES	CLS	CLS	
04-06-04	RECORD DRAWINGS	JOT	JOT	
04-11-04	REVISED STREET NAME	JOT	JOT	
5-12-04	REVISE AS-BUILTS	D.L.M.	D.L.M.	

DATE: 04-10-04  
 HORIZ.: 1"=50' / VERT.: 1"=5'  
 BOOK: PAGE:  
 PROJECT NO.: 03-001



**CENTERLINE CURVE DATA**  
 @ Δ = 34°48'36"  
 D = 24'48.20"  
 R = 236.90'  
 T = 74.26'  
 L = 143.93'

**CENTERLINE INTERSECTIONS**  
 (2) STA. 7+20.95 LINCOLNSHIRE BOULEVARD = STA. 5+99.69 CHINA LANE  
 (6) STA. 4+76.50 SPRINGFIELD COURT = STA. 1+00 CHINA LANE



**SANITARY SEWER STRUCTURE SCHEDULE**

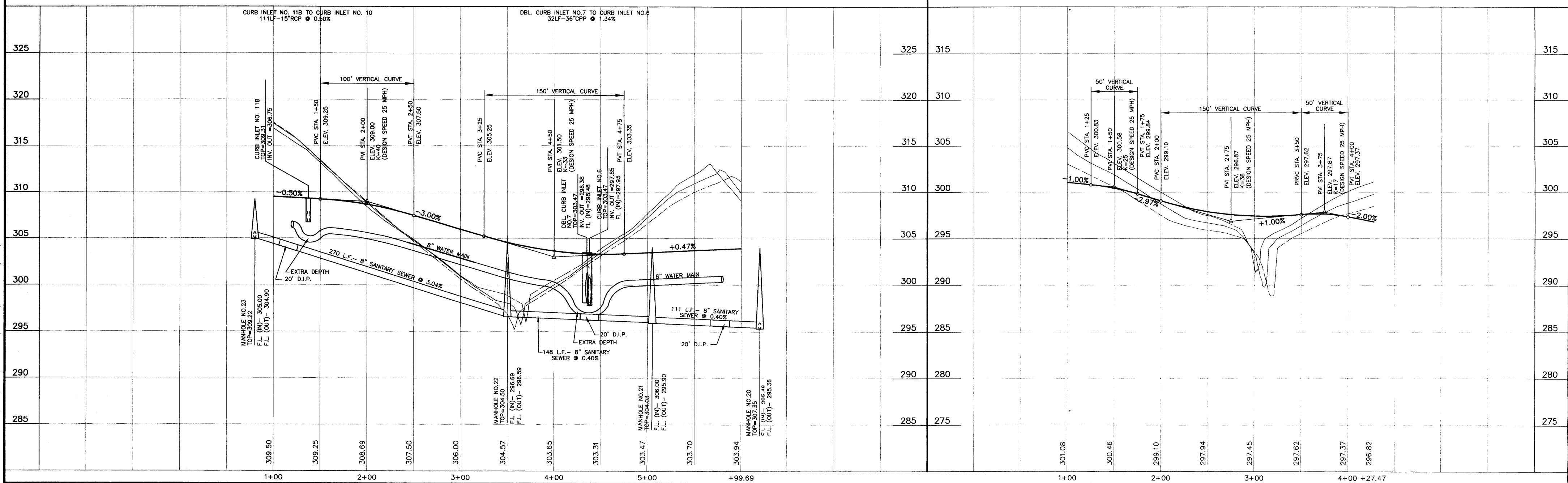
MANHOLE NO. 20 20' LT STA. 7+26.02	MANHOLE NO. 21 20' RT STA. 5+05
MANHOLE NO. 22 20' RT STA. 3+50	MANHOLE NO. 23 20' RT STA. 4+96.50
MANHOLE NO. 24 20' RT STA. 3+87.40	

**DRAINAGE STRUCTURE SCHEDULE**

CURB INLET 6 15.7' LT OF STA. 4+38.10 D.A. = 0.590c I D.A. = 6.620c TC = 11.1 I = 8.29 Q = 80.2	DBL CURB INLET 7 15.7' LT OF STA. 4+35.15 D.A. = 0.800c I D.A. = 6.030c TC = 10.9 I = 8.35 Q = 76.9	CURB INLET 11B 15.7' LT OF STA. 1+37.25 D.A. = 0.200c I D.A. = 0.200c TC = 5.7 I = 10.67 Q = 1.6
--	--	---

**PLAN AND PROFILE NAYLOR LANE (STA. 1+00 TO STA. 5+99.69)**

**PLAN AND PROFILE TRINITY LANE (STA. 1+00 TO STA. 4+27.47)**



**H D LANG AND ASSOCIATES, INC.**

POST OFFICE BOX 16085  
 JACKSON, MISSISSIPPI 39236  
 601-362-4886

PROJECT  
**BLACKTHORNE I  
 (HAWTHORN GREEN - PART 4A)**

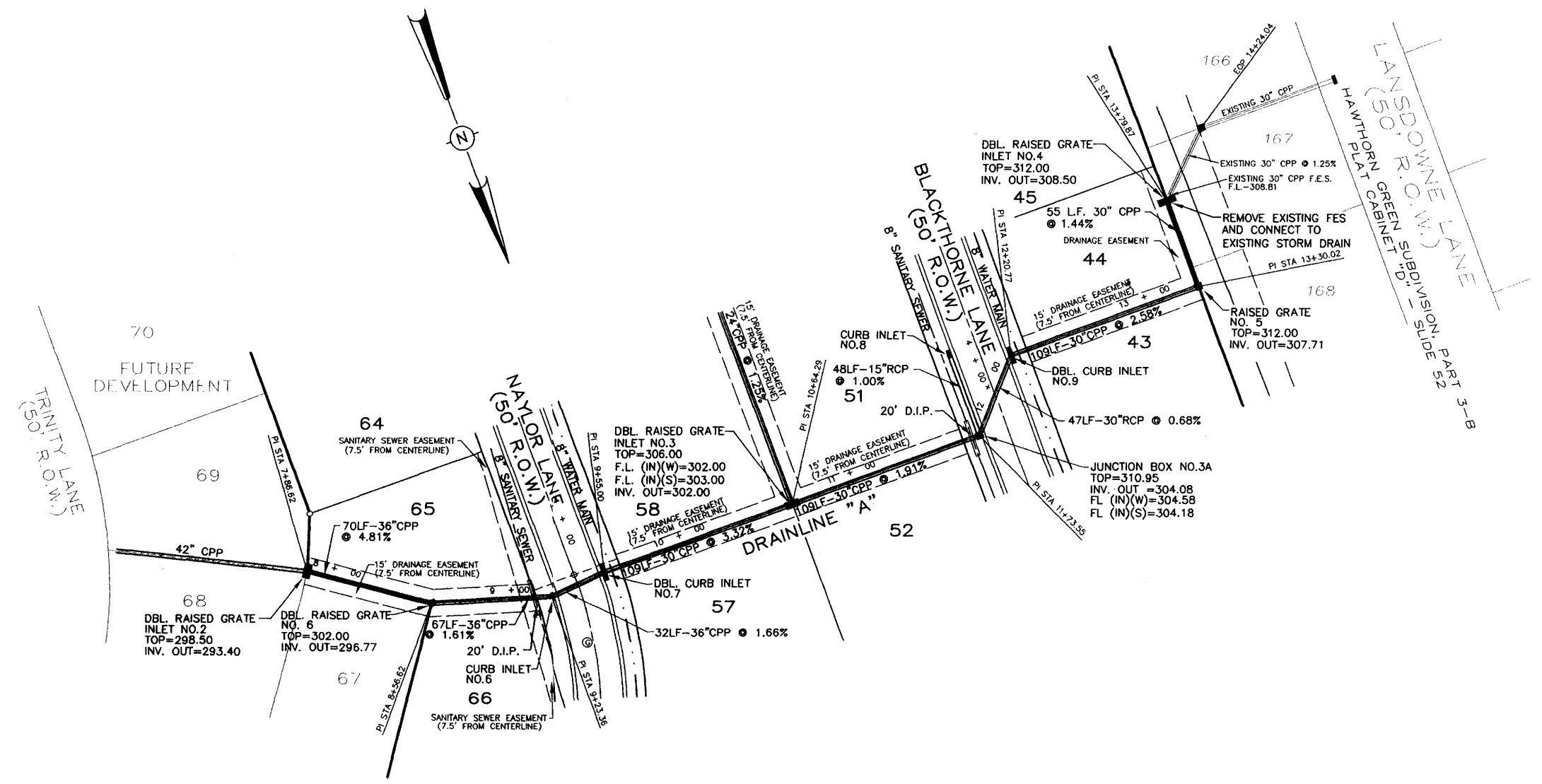
DESCRIPTION  
**PLAN AND PROFILE  
 CHINA LANE (STA. 1+00 TO STA. 5+99.69)  
 TRINITY LANE (STA. 1+00 TO STA. 4+27.47)**

DATE 05-09-03	REVISION REVISED PER RIDGELAND	BY CLS	DRAWN BY: CLS
06-24-03	REVISED PER RIDGELAND (SITE-DIST.)	CLS	DATE: 04-10-04
10-20-03	REVISED FINISH GRADES	CLS	HORIZ.: 1"=50' / VERT.: 1"=5'
04-06-04	RECORD DRAWINGS	JOT	BOOK: PAGE:
04-21-04	REVISED STREET NAME	JOT	PROJECT NO.: 03-001

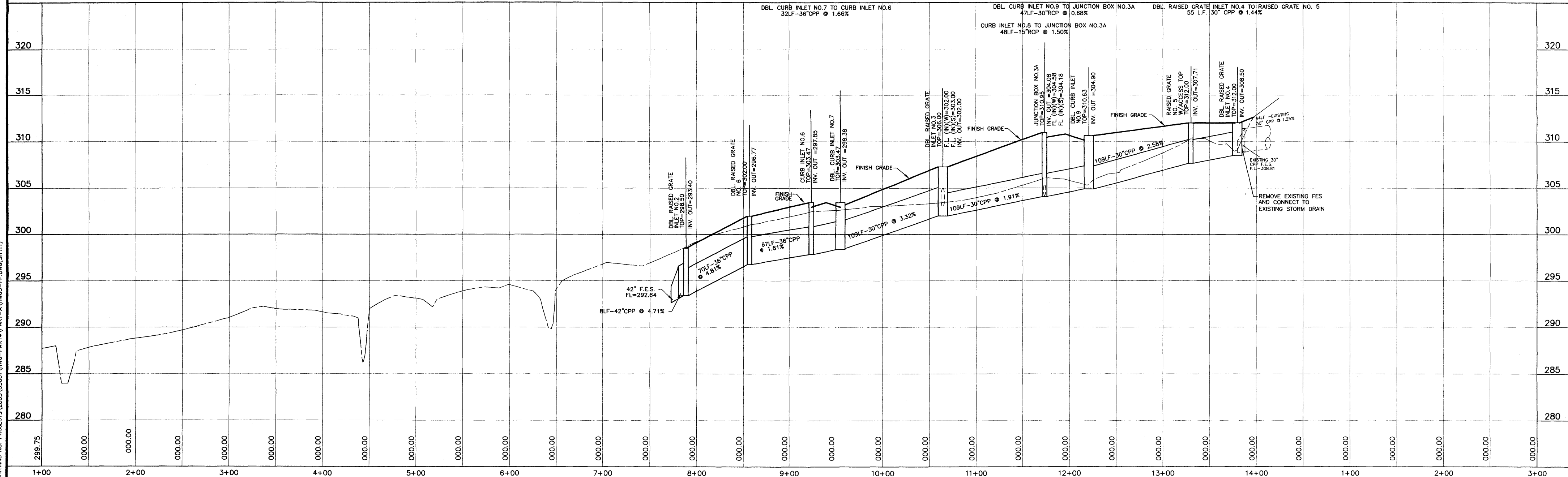
**DRAINAGE STRUCTURE SCHEDULE**

CURB INLET 6	DBL CURB INLET 7	CURB INLET 8	DBL CURB INLET 9
15.7' RT OF	15.7' LT OF	15.7' RT OF	15.7' LT OF
STA. 4+38.10	STA. 4+35.15	STA. 4+39.22	STA. 4+04.04
D.A. = 0.58ac	D.A. = 0.80ac	D.A. = 0.68ac	D.A. = 0.82ac
Σ D.A. = 6.82ac	Σ D.A. = 6.03ac	Σ D.A. = 2.25ac	Σ D.A. = 1.57ac
TC = 11.1	TC = 10.9	TC = 8.5	TC = 8.3
I = 8.29	I = 8.35	I = 9.26	I = 9.35
Q = 80.2	Q = 76.9	Q = 54.7	Q = 50.1

DBL RAISED GRATE INLET NO. 2	DBL RAISED GRATE INLET NO. 3	DBL RAISED GRATE INLET NO. 4
125.0' RT OF	125.0' RT OF	125.0' LT OF
STA. 9+05.94	STA. 4+38.43	STA. 3+54.19
D.A. = 0.84ac	D.A. = 1.0ac	D.A. = 0.75ac
Σ D.A. = 7.46ac	Σ D.A. = 5.23ac	Σ D.A. = 0.75ac
TC = 11.8	TC = 10.1	TC = 6.5
I = 8.06	I = 8.63	I = 10.22
Q = 84.2	Q = 73.0	Q = 44.8



**DRAINLINE "A"**  
(STA. 1+00 TO STA. 14+24.04)



**H D LANG AND ASSOCIATES, INC.**  
POST OFFICE BOX 16085  
JACKSON, MISSISSIPPI 39236  
601-362-4886

PROJECT: **BLACKTHORNE I (HAWTHORN GREEN - PART 4A)**  
DESCRIPTION: **PLAN AND PROFILE DRAINLINE "A" (STA. 7+75 TO STA. 14+24.04)**

DATE	REVISION	BY	DRAWN BY: CLS
06-24-03	REVISED PER RIDGELAND (SITE-DIST.) CLS		DATE: 04-10-03
04-06-04	RECORD DRAWINGS JOT		HORIZ.: 1"=50' / VERT.: 1"=5'
04-21-04	REVISED STREET NAME JOT		BOOK: PAGE:
5-12-04	REVISE AS-BUILTS D.L.M.		PROJECT NO.: 03-001