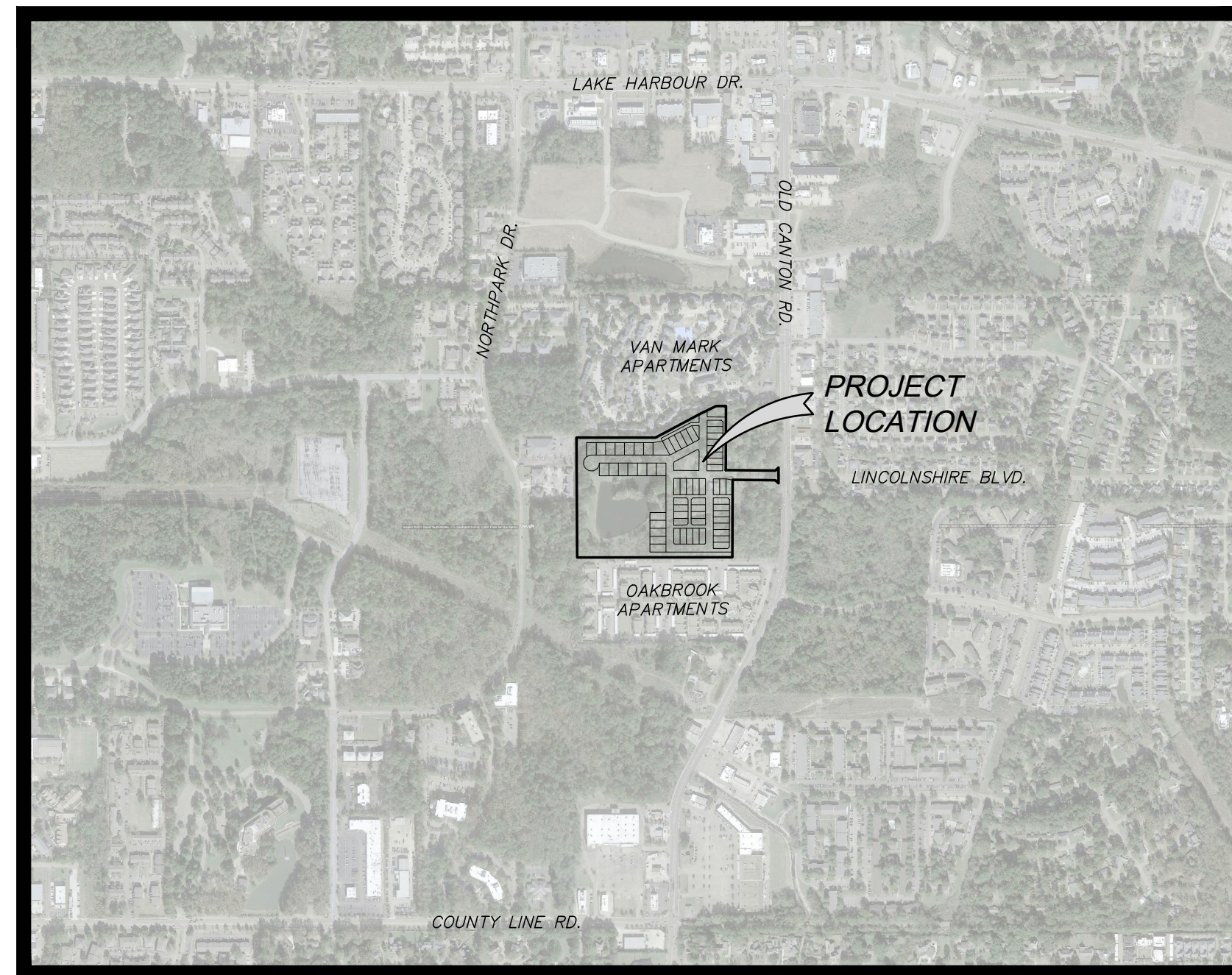
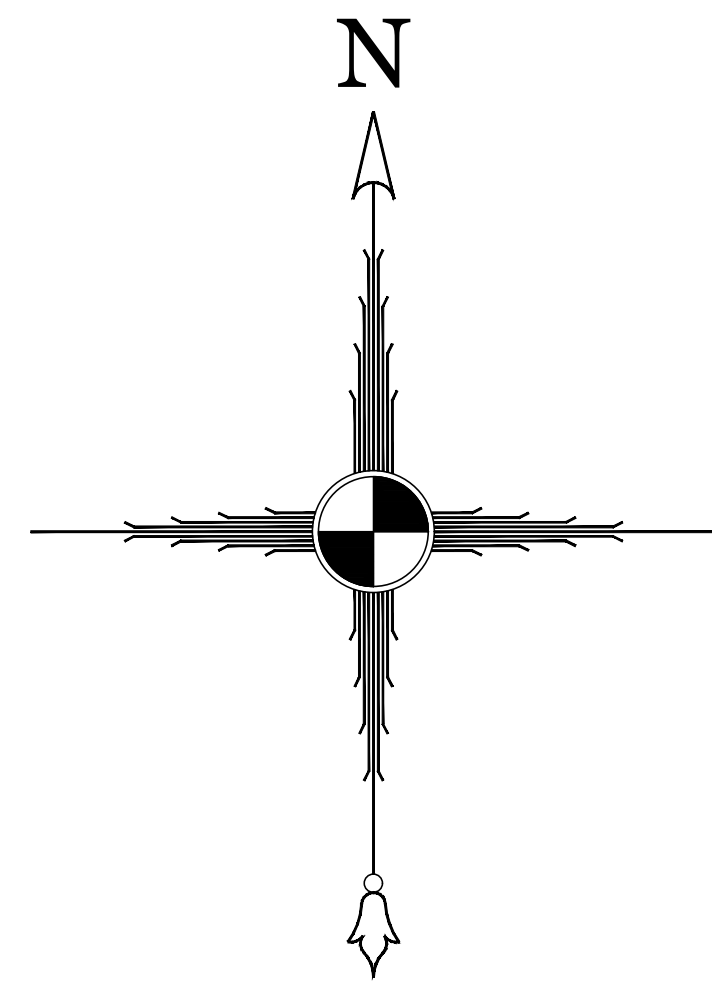


AS-BUILT DRAWINGS FOR:  
**THE HERITAGE AT JACOBS FARM**

LOCATION:  
 CITY LIMITS OF RIDGELAND  
 MADISON COUNTY, MISSISSIPPI  
 NOVEMBER, 2023



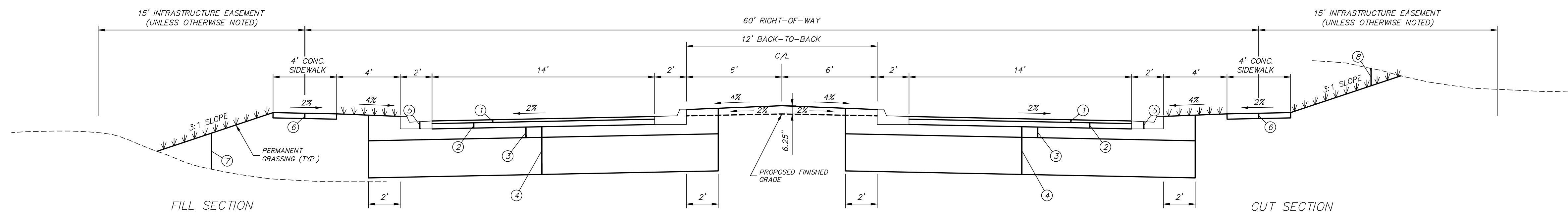
**VICINITY MAP**

**DRAWING INDEX**

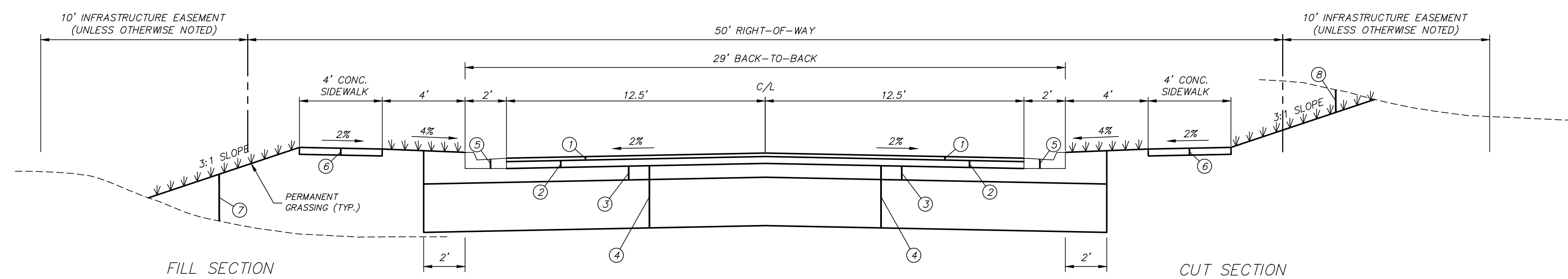
CONTENTS	SHEET NO.
COVER	1
TYPICAL SECTION AS-BUILTS	2
WATER & SANITARY SEWER AS-BUILTS	3
STORM DRAIN AS-BUILTS	4

OWNER:  
 SELECT EDGE REALTY, LLC  
 277 EAST PEARL STREET  
 JACKSON, MS 39201

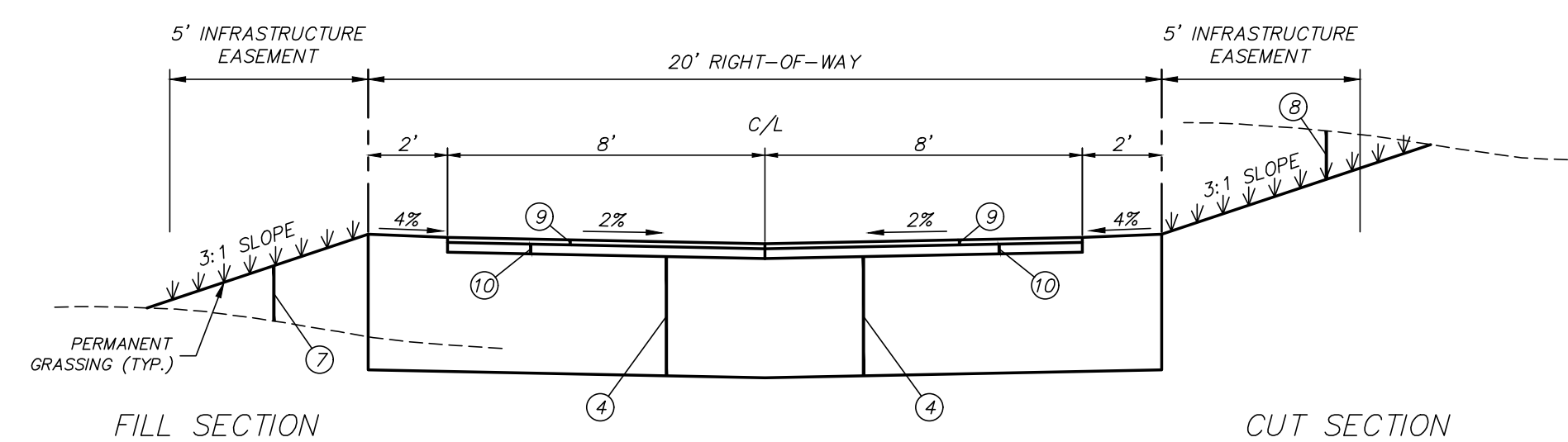
<b>BENCHMARK</b> <b>ENGINEERING &amp; SURVEYING, LLC</b> CIVIL ♦ STRUCTURAL ♦ PLANNING ♦ SURVEYING ♦ UAV MAPPING BRANDON   FLOWOOD   MADISON EST. 2004    www.benchmarkms.net    601-627-7780		SHEET NUMBER
		1 of 4
		PROJECT NUMBER
		B-8337



**TYPICAL BOULEVARD SECTION**  
 HERITAGE BOULEVARD STA. 6+45.81 – STA. 7+99.38



**TYPICAL SECTION FOR PUBLIC STREETS**



**TYPICAL SECTION FOR PRIVATE ALLEYS**

**TYPICAL SECTION LEGEND**

- ① 2" ASPHALT SURFACE COURSE (SC-1, TYPE 8) (1 @ 2") (TO BE INSTALLED AT A LATER DATE – NOT PART OF THIS CONTRACT)
- ② 4" ASPHALT BASE COURSE (BB-1, TYPE 6) (1 @ 4")
- ③ 8" HYDRATED LIME, 6% BY WEIGHT (EXTENDING 2' BEYOND BACK OF CURB)
- ④ 3' BUFFER (MIN.) FROM UNSUITABLE MATERIAL, SELECT FILL MATERIAL (EXTENDING 2' BEYOND BACK OF CURB)
- ⑤ 2" VERTICAL CURB & GUTTER
- ⑥ 4" CONCRETE SIDEWALK (BY OTHERS)
- ⑦ UNCLASSIFIED EXCAVATION/SELECT BORROW MATERIAL
- ⑧ STRIPPING & UNCLASSIFIED EXCAVATION
- ⑨ ~~1.5"~~ 3" ASPHALT SURFACE COURSE (SC-1, TYPE 8) (~~1 @ 1.5"~~ 2 @ 1.5")
- ⑩ 3" ASPHALT BASE COURSE (BB-1, TYPE 6) (1 @ 3")

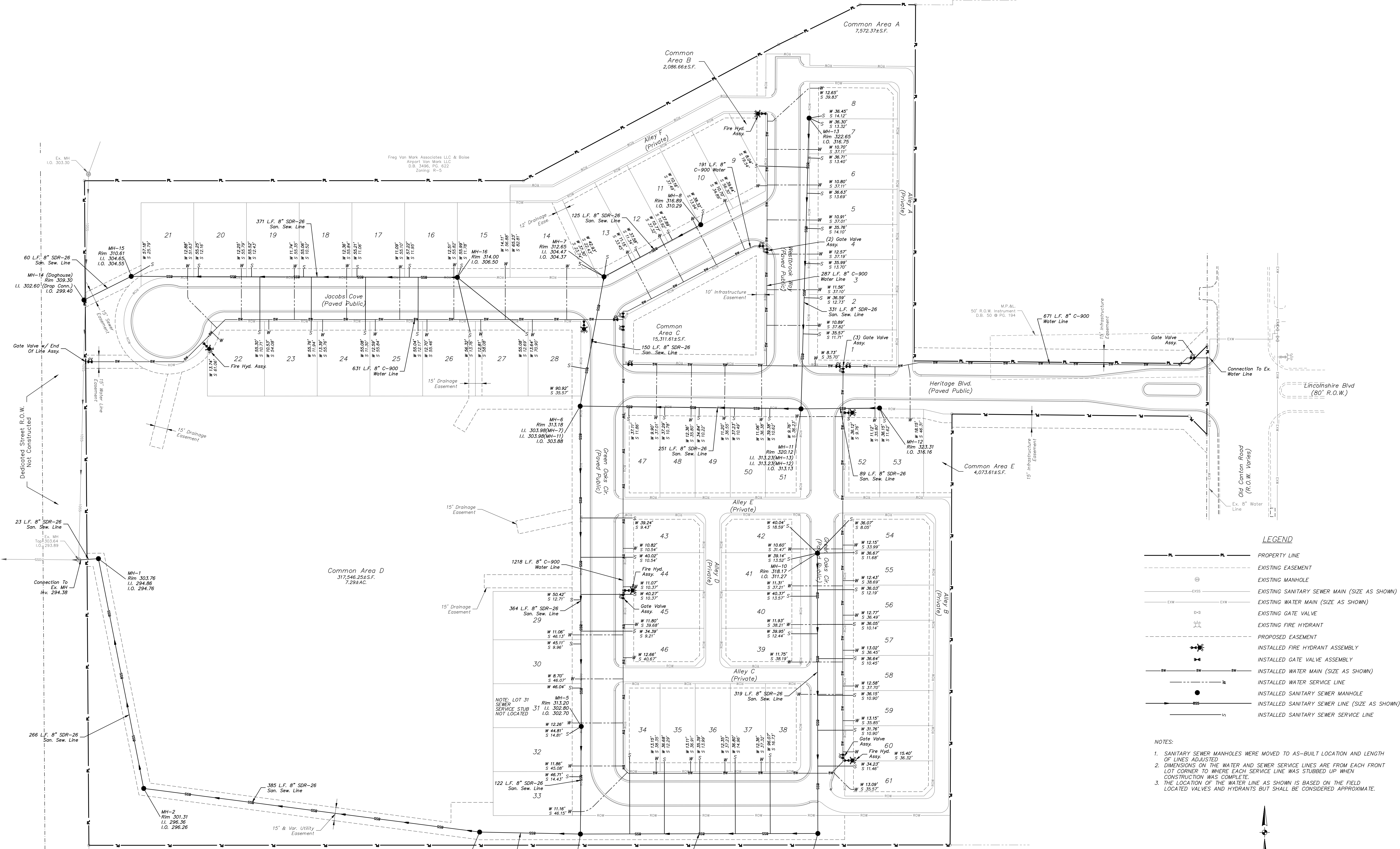
DATE: 11/03/23	DRAWN: JHB	REVISIONS:
CHECKED: GAB	SCALE:	
REF C/L:	EG SURFACE:	
FG SURFACE:		

PROJECT LOCATION:  
 OLD CANTON ROAD  
 RIDGELAND, MS 39157

CLIENT:  
 SELECT EDGE REALTY, LLC  
 277 EAST PEARL ST., JACKSON, MS 39201

PROJECT:  
**THE HERITAGE AT JACOBS FARM**

SHEET CONTENTS:  
**TYPICAL SECTION AS-BUILTS**

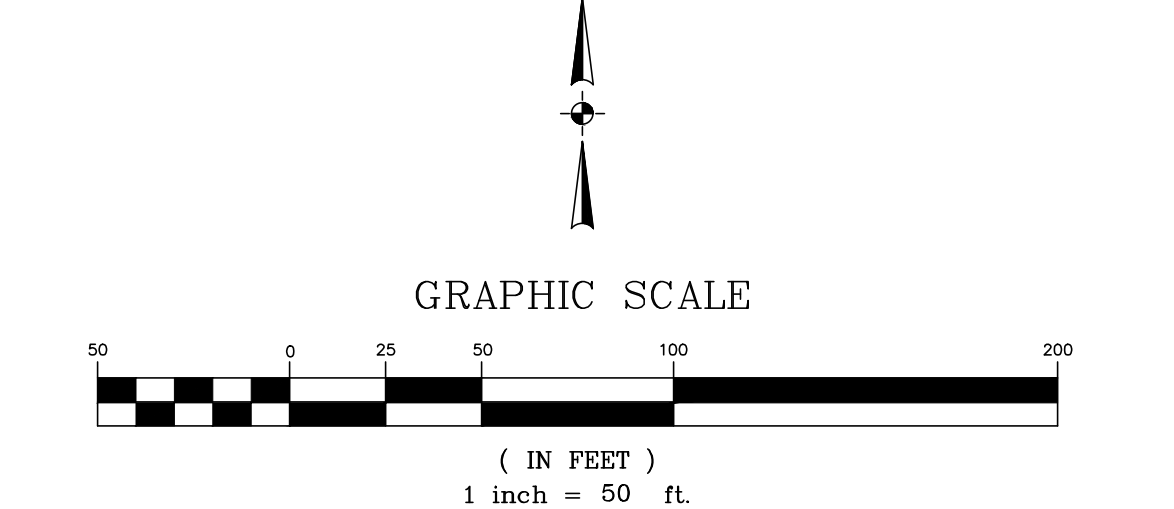


**LEGEND**

- P — PROPERTY LINE
- - - - - EXISTING EASEMENT
- EXISTING MANHOLE
- S — EXISTING SANITARY SEWER MAIN (SIZE AS SHOWN)
- W — EXISTING WATER MAIN (SIZE AS SHOWN)
- EXISTING GATE VALVE
- EXISTING FIRE HYDRANT
- - - - - PROPOSED EASEMENT
- WITH STAR EXISTED FIRE HYDRANT ASSEMBLY
- WITH STAR EXISTED GATE VALVE ASSEMBLY
- S — INSTALLED WATER MAIN (SIZE AS SHOWN)
- W — INSTALLED WATER SERVICE LINE
- INSTALLED SANITARY SEWER MANHOLE
- S — INSTALLED SANITARY SEWER SERVICE LINE

**NOTES:**

- SANITARY SEWER MANHOLES WERE MOVED TO AS-BUILT LOCATION AND LENGTH OF LINES ADJUSTED
- DIMENSIONS ON THE WATER AND SEWER SERVICE LINES ARE FROM EACH FRONT LOT CORNER TO WHERE EACH SERVICE LINE WAS STUBBED UP WHEN CONSTRUCTION WAS COMPLETE.
- THE LOCATION OF THE WATER LINE AS SHOWN IS BASED ON THE FIELD LOCATED VALVES AND HYDRANTS BUT SHALL BE CONSIDERED APPROXIMATE.



Freg Von Mark Associates LLC & Boise  
 Airport Von Mark LLC  
 D.B. 3496, P.O. 622  
 zoning: R-5

Dobson LLC  
 D.B. 2890, P.O. 837  
 zoning: MU-1

