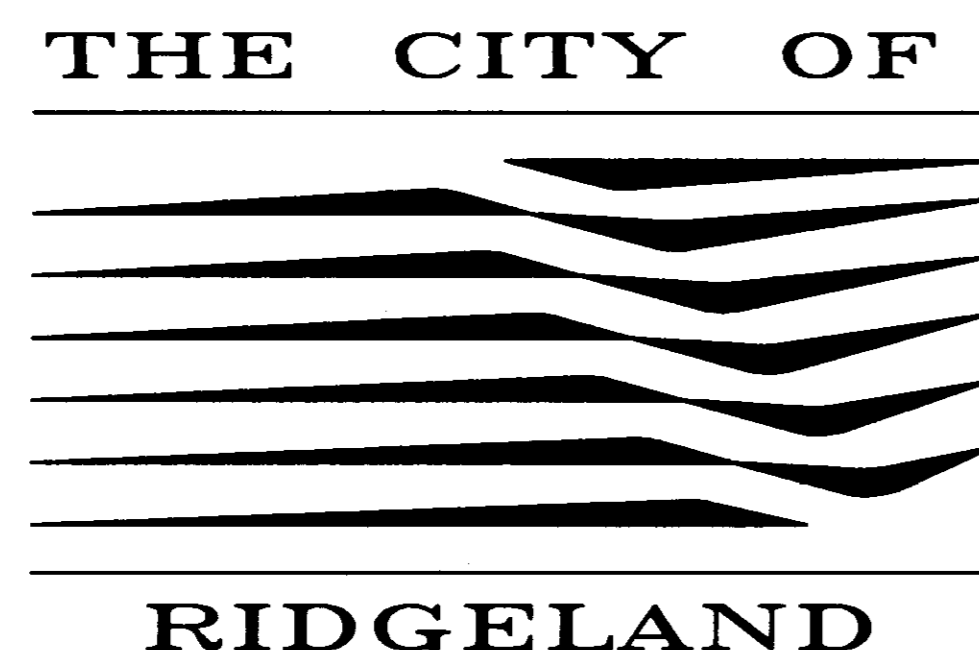


# CITY OF RIDGELAND, MISSISSIPPI

## HIGHLAND COLONY PARKWAY WATER LINE

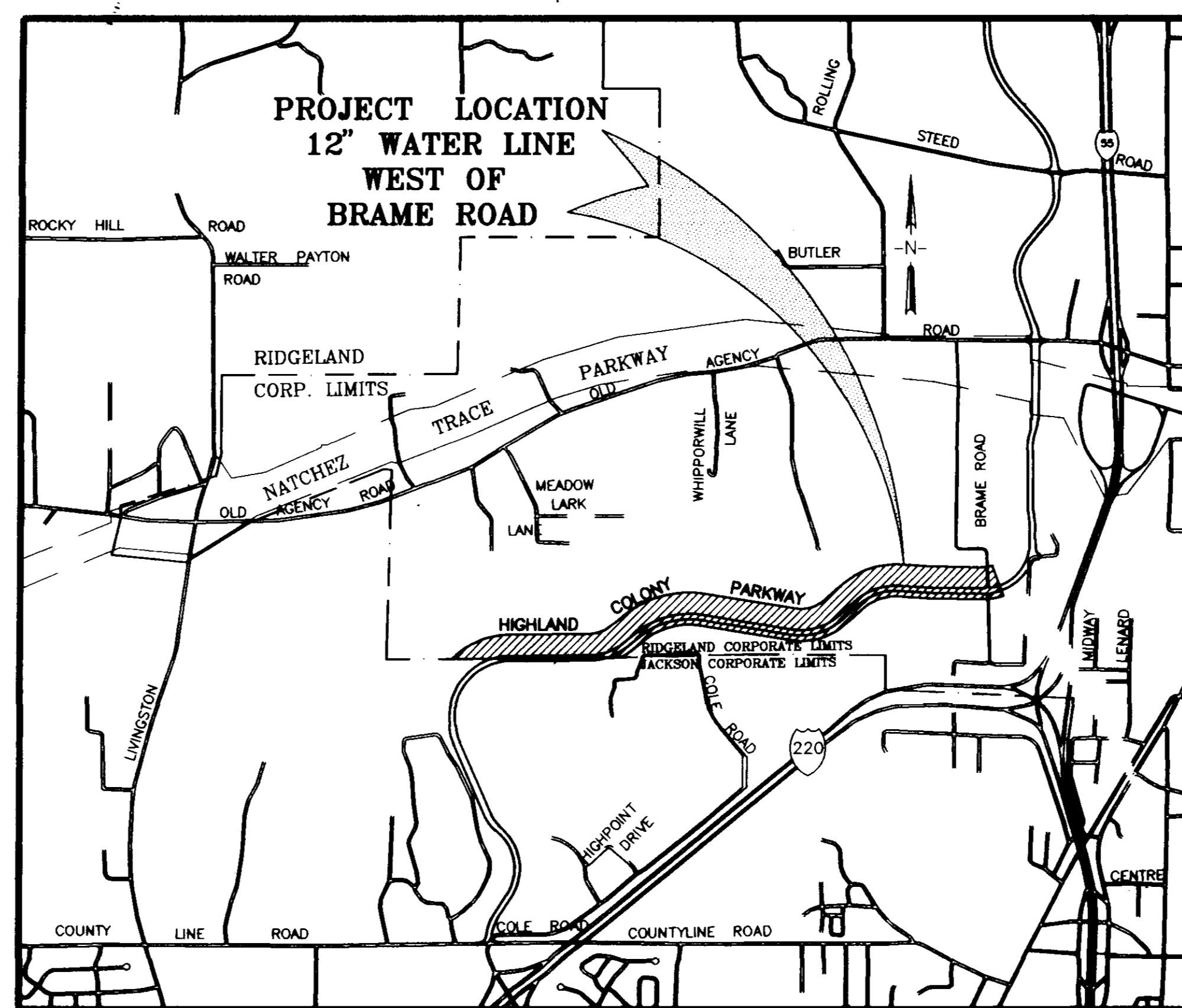
### WEST OF BRAME ROAD



Mayor:  
Gene F. McGee

Mayor Pro Tem:  
Chuck Kobert

City Attorney:  
Pyle, Dreher,  
Mills & Dye, P.A.



VICINITY MAP

JANUARY 1994

WAGGONER ENGINEERING, INC.  
CONSULTING ENGINEERS  
Jackson / Pascagoula, Mississippi

Aldermen:

Brian Barcellona  
Joe Barlow  
Al Bible  
Harvey Carr, Jr.  
Linda Davis  
Chuck Kobert  
Daryl Smith

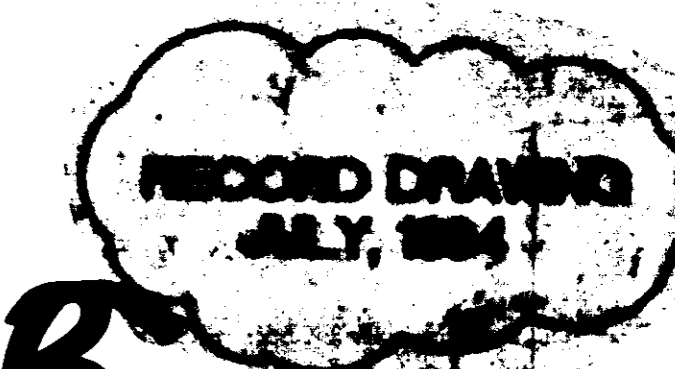
Public Works Director:  
Sam Vinson, P.E.

Asst. Public Works Director:  
Sid Hawthorne

City Clerk:  
Michael McPhearson

Fire Chief:  
Elmer Waits

Police Chief:  
Charles Newell



PWP 00818

5. WAGGONER INDEX THE APR 14 08 05 16 1994  
 WAGGONER INDEX THE APR 14 08 05 16 1994

INDEX TO DRAWINGS	
SHEET NO.	TITLE
1	TITLE SHEET
2	INDEX TO DRAWINGS AND GENERAL CONSTRUCTION NOTES
3	PLAN-PROFILE SHEET STA.78+00 TO STA.90+00
4	PLAN-PROFILE SHEET STA.90+00 TO STA.105+00
5	PLAN-PROFILE SHEET STA.105+00 TO STA.120+00
6	PLAN-PROFILE SHEET STA.120+00 TO STA.135+00
7	PLAN-PROFILE SHEET STA.135+00 TO STA.150+00
8	PLAN-PROFILE SHEET STA.150+00 TO STA.165+00
9	PLAN-PROFILE SHEET STA.165+00 TO STA.167+60
10	WATER STANDARD DETAIL SHEET

GENERAL CONSTRUCTION NOTES

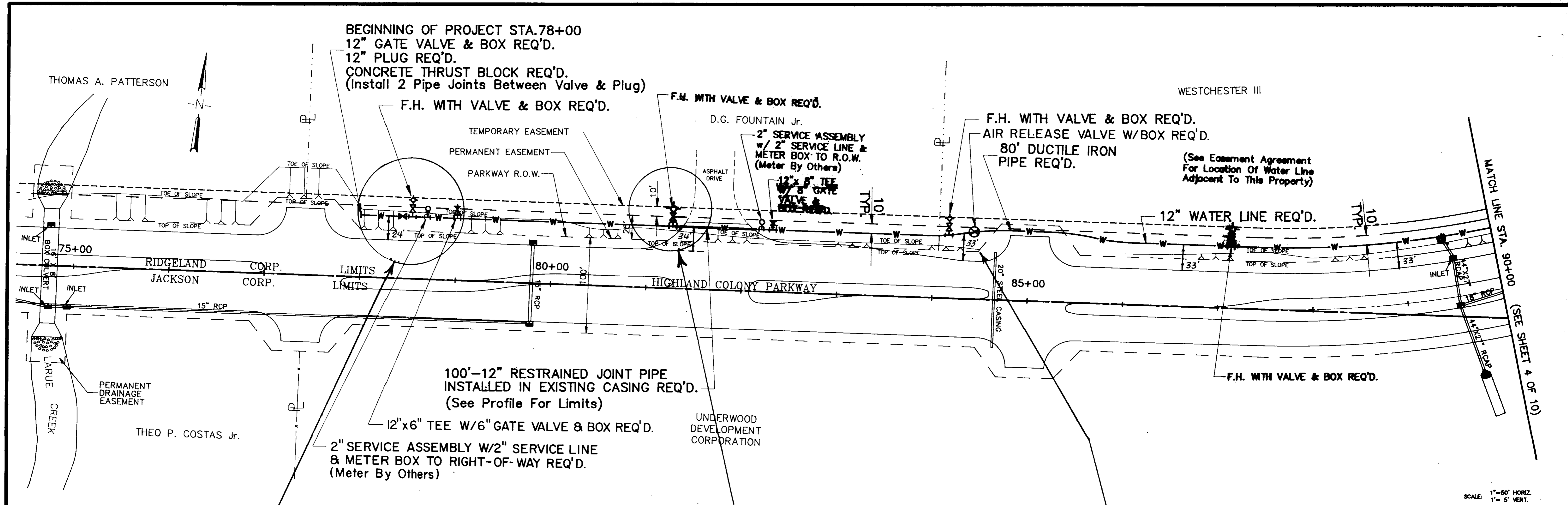
- Any existing utility locations shown on plans are approximate only. The Contractor shall coordinate the location (horizontal and vertical) of any existing utilities (power, telephone, gas, water, sewer, etc.) with the appropriate utility company before construction begins.
- Any utility line or service line encountered during construction, whether shown on plans or not, shall be protected by the Contractor and any repairs necessary due to damage to same by the Contractor shall be at no additional cost to the Owner.
- The Contractor shall be responsible for verifying horizontal and vertical clearances on any utility service crossings required before installation.
- The Contractor shall fertilize and seed all areas where the existing vegetation was removed or disturbed during construction and not required to be solid sodded, paved, or graveled.
- Unsuitable bedding, backfill or site subgrade material which may be encountered shall be excavated to the limits required and backfilled with acceptable material to the lines and grades shown on the plans.
- Any TBM's which are or may be in conflict with construction activities shall be relocated by Engineer prior to commencement of construction in the immediate area.
- All detailed construction staking will be by Contractor at no cost to the Owner.
- The Contractor shall be responsible for completing all sampling and testing of materials incorporated into the project and for submission of same to Engineer for review. Prior use test results, manufacturer's certificates, or proposed mix designs shall be submitted to the Engineer for review before incorporation into project. This shall include backfill, concrete, asphalt, steel, paint, piping, fencing materials, aggregates, seed and other items as specified by the Engineer. All testing shall be an absorbed cost item.

GENERAL CONSTRUCTION NOTES (CONTINUED)

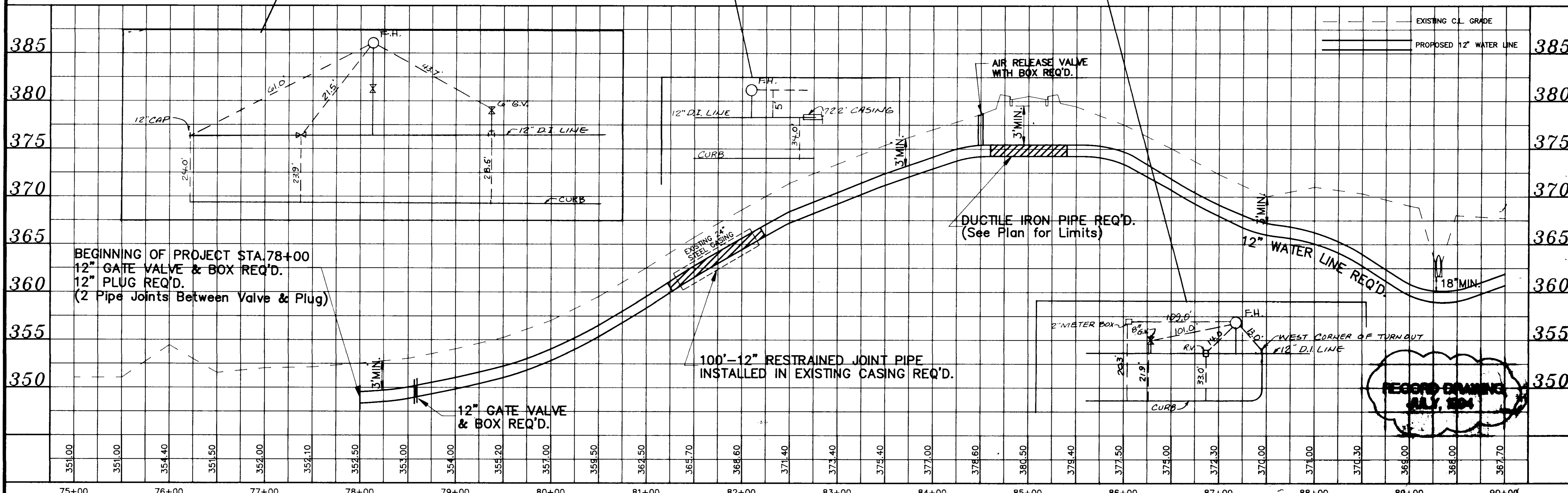
- All testing certifications shall state that the subject material meets the specified quality, grade, purity, class or weight, or that the subject material meets or exceeds the requirement of the applicable ASTM, AASHTO, MSHD or other standards. Certifications shall be submitted to the Engineer prior to incorporation of the subject material into the project.
- Cut zones for storm sewer, if so indicated on the Bid Form, shall be measured from the original ground profile or proposed grade, whichever is less.
- The Contractor shall repair or replace fences that are damaged, removed or otherwise disturbed during construction. Fences shall be restored to their original condition or better using the same types of material, wire, boards, chain link, pipe, etc. as used for original construction.
- The Contractor shall repair roadways, driveways, sidewalks, yard surfaces, curb and gutter sections, etc., disturbed during construction. Repairs shall be made by using the types of material used during original construction and to the complete satisfaction of the Owner and Engineer.
- The Contractor shall protect trees, shrubbery, flowers, sod and other vegetation, not specified for removal by Drawings or Specifications, and shall repair or replace such items as are damaged during construction of project with the same types and quality as those that are damaged. Such repair or replacement shall be to the satisfaction of the Engineer and the Owner of the property involved.
- The repair or replacement of items not listed on the Bid Form for separate payment, shall be considered as incidental to the project and the cost for such items shall be included in the unit price bid for Clearing and Grubbing.

**RECORD DRAWING  
JULY, 1994**

<b>CITY OF RIDGELAND, MISSISSIPPI</b>			
HIGHLAND COLONY PARKWAY WATER LINE WEST OF BRAME ROAD			
INDEX TO DRAWINGS AND GENERAL CONSTRUCTION NOTES			
WAGGONER ENGINEERING, INC. Consulting Engineers - Jackson, Mississippi			
DRAWN BY: C.S.	DATE: 1-3-94	SHEET NUMBER	
REVIEWED BY: W.L.M.	SCALE: NOT TO SCALE	2 OF 10	



SCALE: 1" = 50' HORIZ.  
1" = 5' VERT.



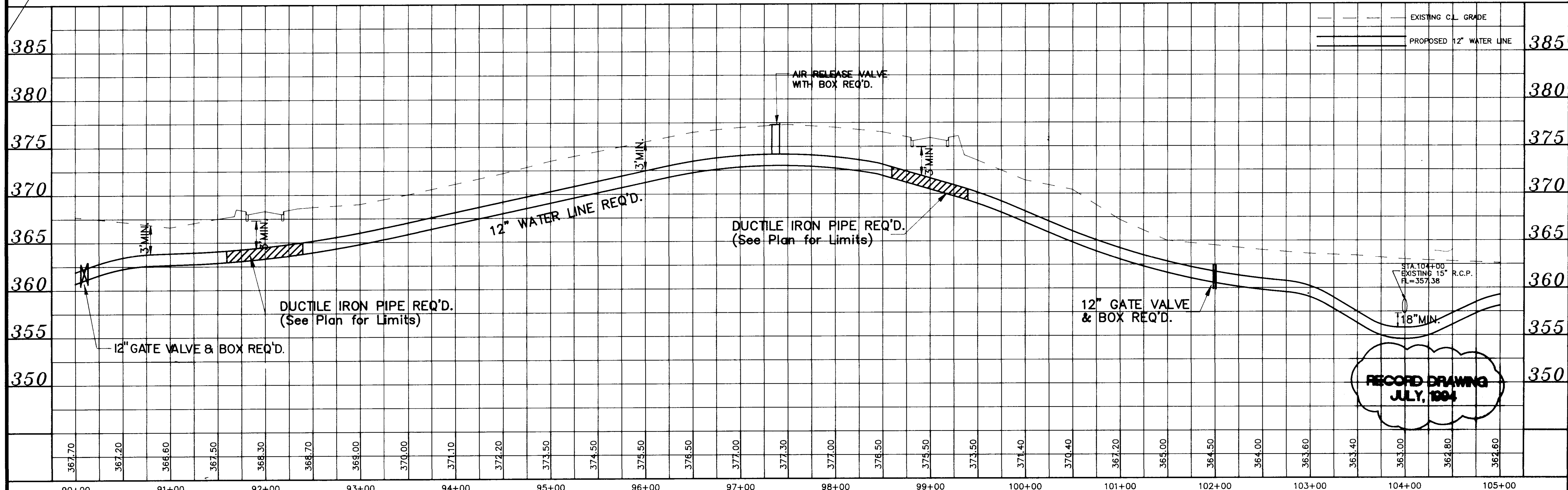
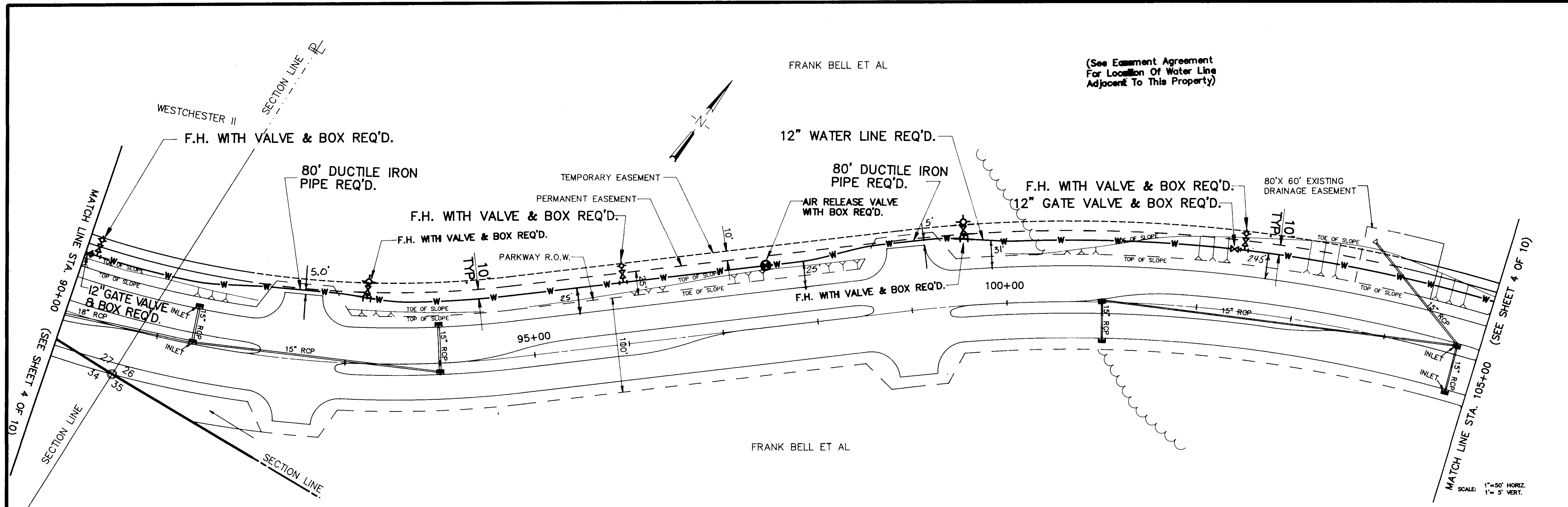
75+00	76+00	77+00	78+00	79+00	80+00	81+00	82+00	83+00	84+00	85+00	86+00	87+00	88+00	89+00	90+00
351.00	351.00	354.40	351.50	354.00	355.20	357.00	358.50	362.50	365.70	368.60	371.40	372.40	375.40	377.00	378.60
380.00	380.00	380.00	380.00	380.00	380.00	380.00	380.00	380.00	380.00	380.00	380.00	380.00	380.00	380.00	380.00

NO.	DATE	REVISIONS	BY

DESIGNED: W.L.M. DATE: 1-25-94  
 DRAWN: C.S. SCALE: AS SHOWN  
 WAGNER ENGINEERING INC. CONSULTING ENGINEERS  
 JACKSON, BRANDON / PASCAGOULA, MISSISSIPPI

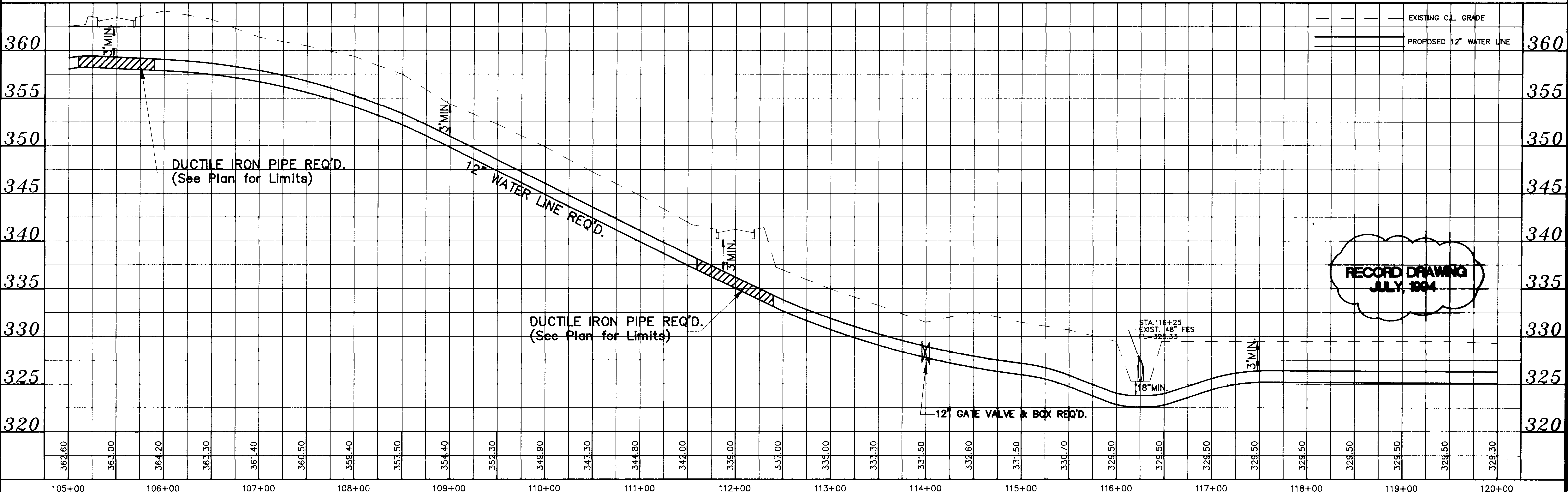
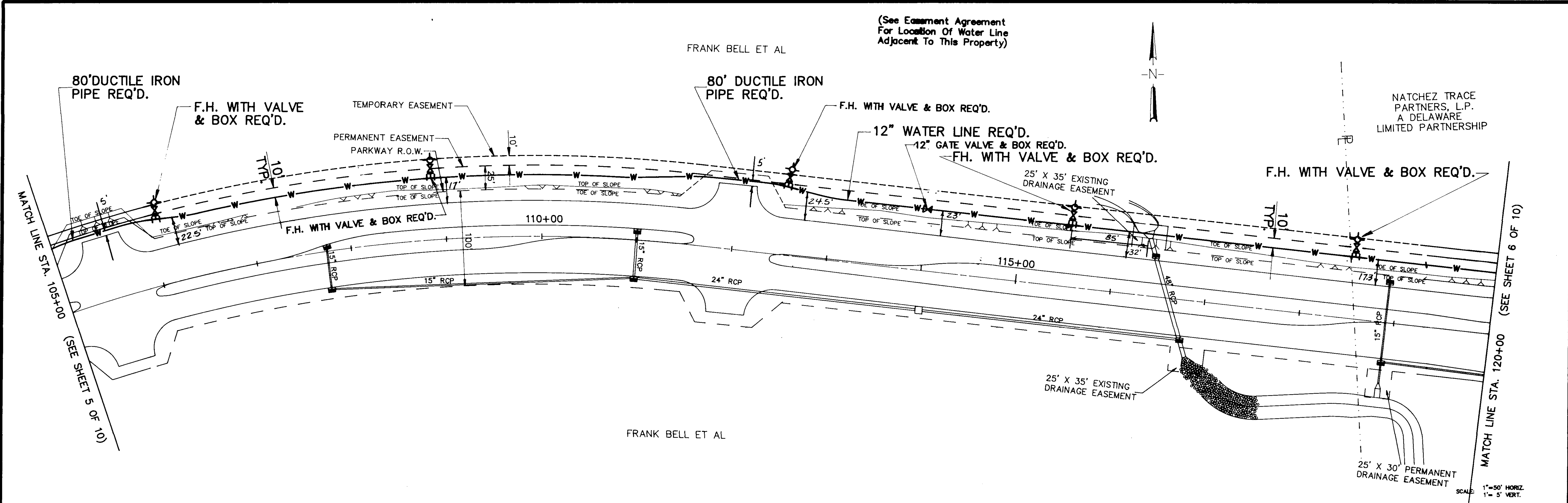
CITY OF RIDGELAND  
 HIGHLAND COLONY PARKWAY WATER LINE - WEST OF BRAME RD.  
 STA. 78+00 TO STA. 90+00  
 ACAD PATH ROUTE 90008\PPRO1  
 W.E.I. JOB NO. 90-008 SHEET NO. 3 OF 10

**RECORD DRAWING**  
**JULY, 2004**



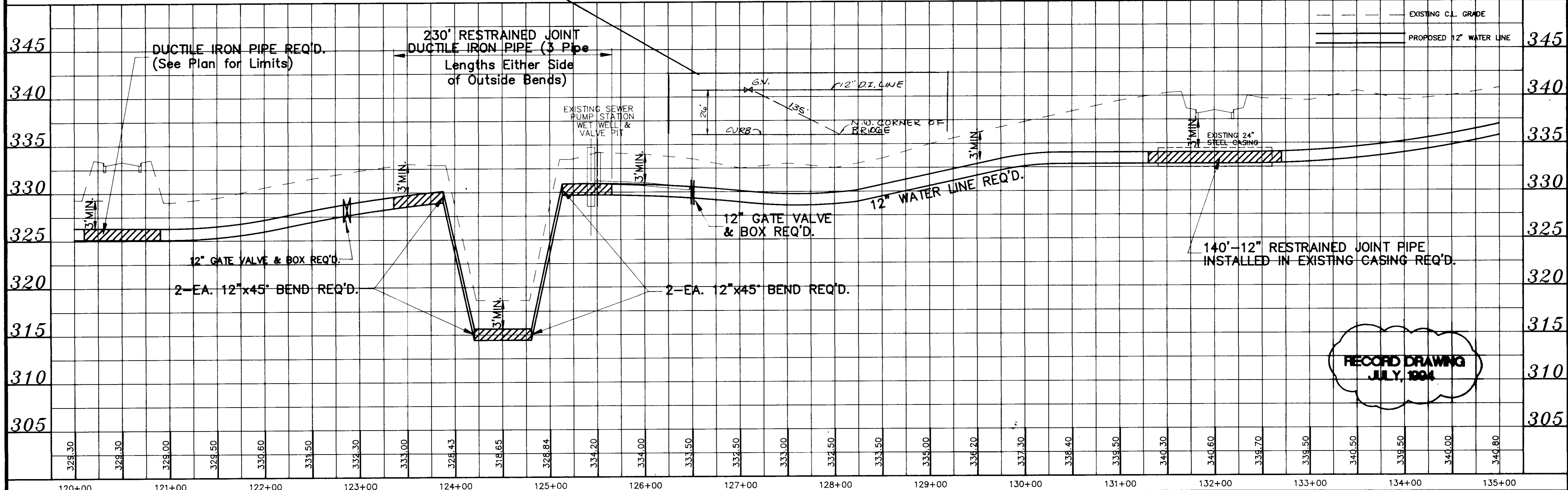
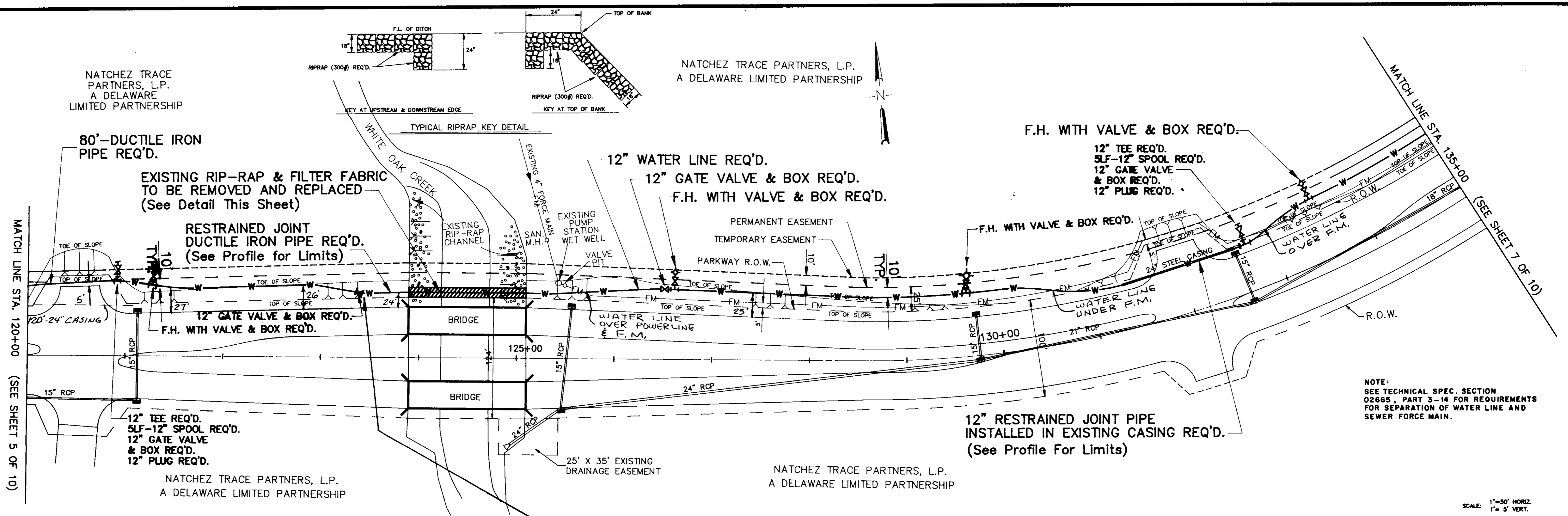
367.70	367.20	366.60	367.50	368.30	368.70	369.00	370.00	371.10	372.20	373.50	374.50	375.50	376.50	377.00	377.30	377.00	376.50	375.50	373.50	371.40	370.40	367.20	365.00	364.50	364.00	363.60	363.40	363.00	362.80	362.60
90+00	91+00	92+00	93+00	94+00	95+00	96+00	97+00	98+00	99+00	100+00	101+00	102+00	103+00	104+00	105+00															

DESIGNED W.L.M. DATE 1-25-94		DRAWN C.S. SCALE AS SHOWN		<b>WAGNER ENGINEERING INC. CONSULTING ENGINEERS</b> JACKSON, BRANDON / PASCAGOULA, MISSISSIPPI		<b>CITY OF RIDGELAND</b> HIGHLAND COLONY PARKWAY WATER LINE - WEST OF BRAME RD. STA. 90+00 TO STA. 105+00		ACAD PATH ROUTE 90008\PPR02 W.E.I. JOB NO. 90-008 SHEET NO. 4 OF 10	
NO.	DATE	REVISIONS		BY					



NATCHEZ TRACE PARTNERS, L.P.  
A DELAWARE LIMITED PARTNERSHIP

NATCHEZ TRACE PARTNERS, L.P.  
A DELAWARE LIMITED PARTNERSHIP



DESIGNED W.L.M.		DATE 1-25-94		CITY OF RIDGELAND		ACAD PATH ROUTE 90008 PPR04	
DRAWN C.S.		SCALE AS SHOWN		HIGHLAND COLONY PARKWAY WATER LINE-WEST OF BRAME RD. STA.120+00 TO STA.135+00		W.E.I. JOB NO. 90-008 SHEET NO. 6 OF 10	
NO. DATE		REVISIONS		BY			

WAGGONER ENGINEERING INC. CONSULTING ENGINEERS  
JACKSON, BRANDON / PASCAGOULA, MISSISSIPPI

CITY OF RIDGELAND  
HIGHLAND COLONY PARKWAY WATER LINE-WEST OF BRAME RD.  
STA.120+00 TO STA.135+00

ACAD PATH ROUTE 90008 PPR04  
W.E.I. JOB NO. 90-008 SHEET NO. 6 OF 10

NATCHEZ TRACE PARTNERS, L.P.  
A DELAWARE LIMITED PARTNERSHIP

REMOVE EXISTING BLOW-OFF & 12" PLUG REQ'D.  
CONNECTION TO EXISTING  
12" WATER LINE REQ'D. (● Existing Blow-Off)  
2EA. - 12"x90° BENDS REQ'D.  
3EA. - 12" GATE VALVE & BOX REQ'D.  
1EA. - 12" TEE REQ'D.

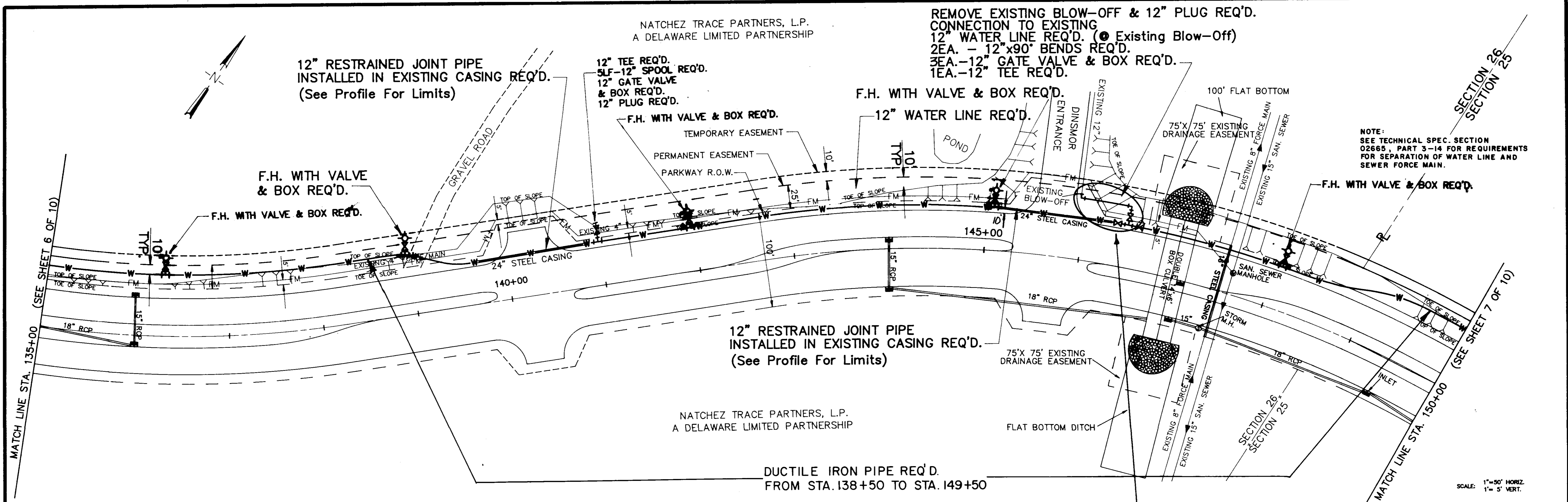
12" RESTRAINED JOINT PIPE  
INSTALLED IN EXISTING CASING REQ'D.  
(See Profile For Limits)

12" TEE REQ'D.  
5LF-12" SPOOL REQ'D.  
12" GATE VALVE  
& BOX REQ'D.  
12" PLUG REQ'D.

F.H. WITH VALVE & BOX REQ'D.

12" WATER LINE REQ'D.

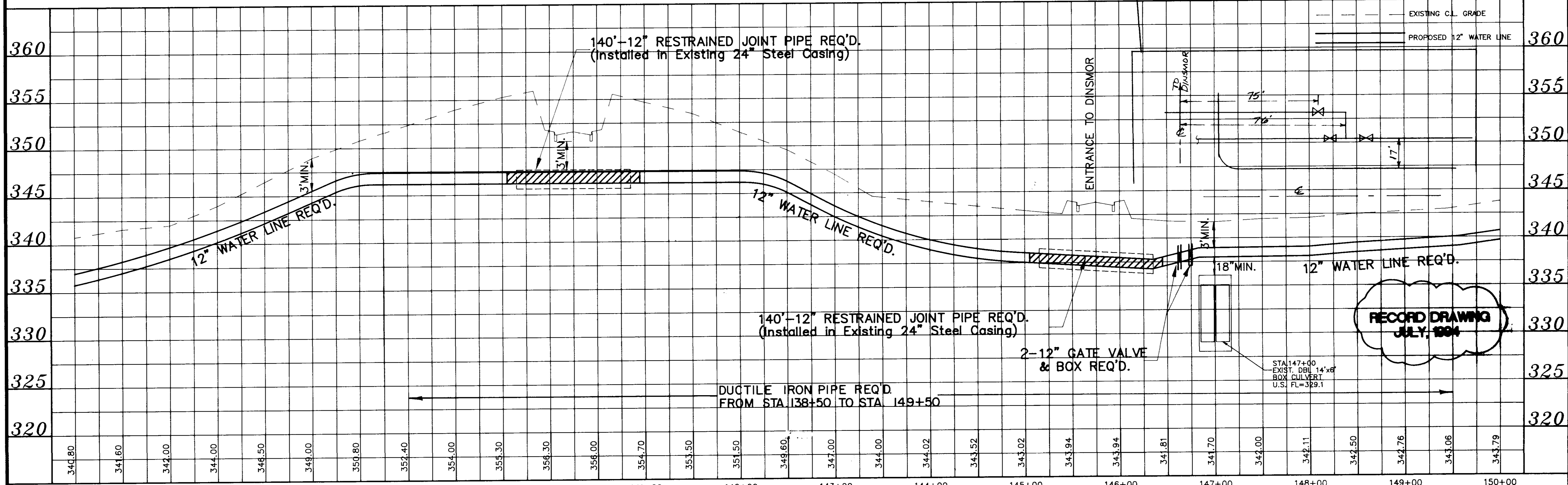
NOTE:  
SEE TECHNICAL SPEC. SECTION  
02665, PART 3-14 FOR REQUIREMENTS  
FOR SEPARATION OF WATER LINE AND  
SEWER FORCE MAIN.



12" RESTRAINED JOINT PIPE  
INSTALLED IN EXISTING CASING REQ'D.  
(See Profile For Limits)

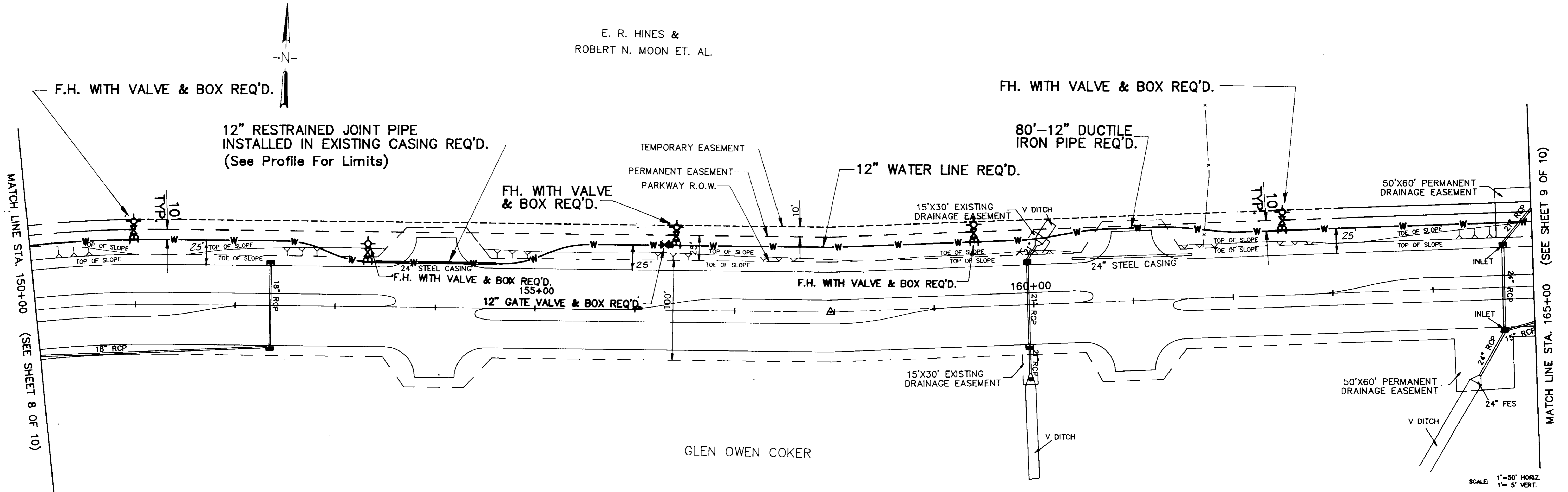
NATCHEZ TRACE PARTNERS, L.P.  
A DELAWARE LIMITED PARTNERSHIP

DUCTILE IRON PIPE REQ'D.  
FROM STA. 138+50 TO STA. 149+50



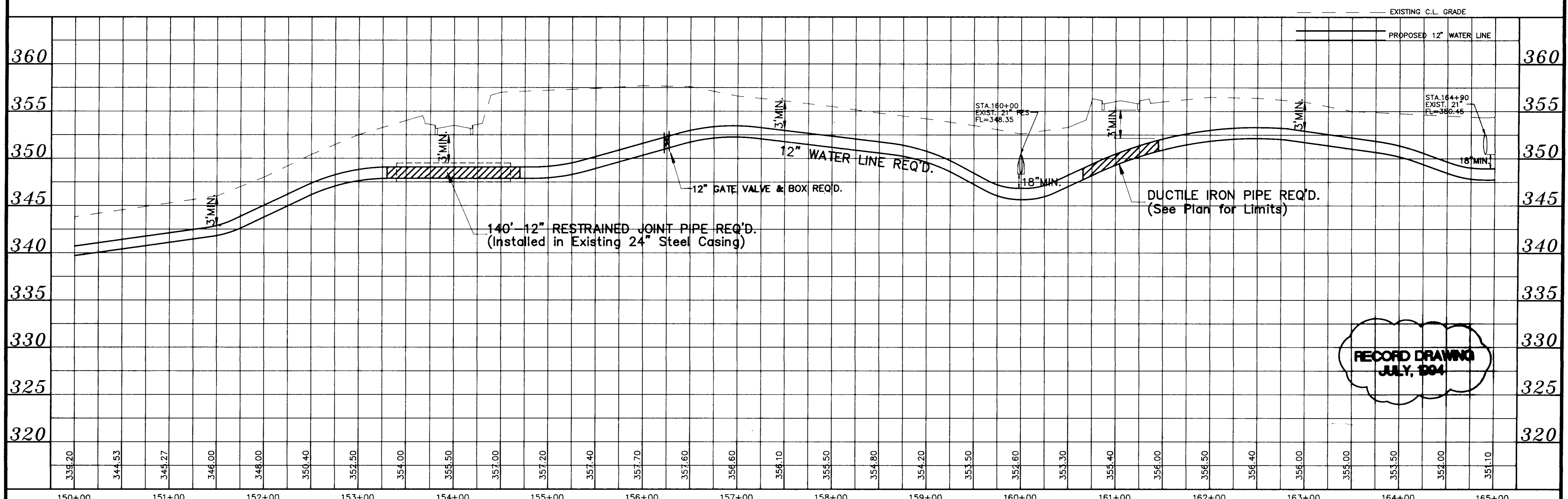
DESIGNED W.L.M.	DATE 1-25-94	<p>WACONER ENGINEERING INC. CONSULTING ENGINEERS JACKSON, BRANDON / PASCAGOULA, MISSISSIPPI</p>	<p>CITY OF RIDGELAND HIGHLAND COLONY PARKWAY WATER LINE - WEST OF BRAME RD. STA. 135+00 TO STA. 150+00</p>	ACAD PATH ROUTE 90008\PPROS
DRAWN C.S.	SCALE AS SHOWN			W.E.I. JOB NO. 90-008

E. R. HINES &  
ROBERT N. MOON ET. AL.



GLEN OWEN COKER

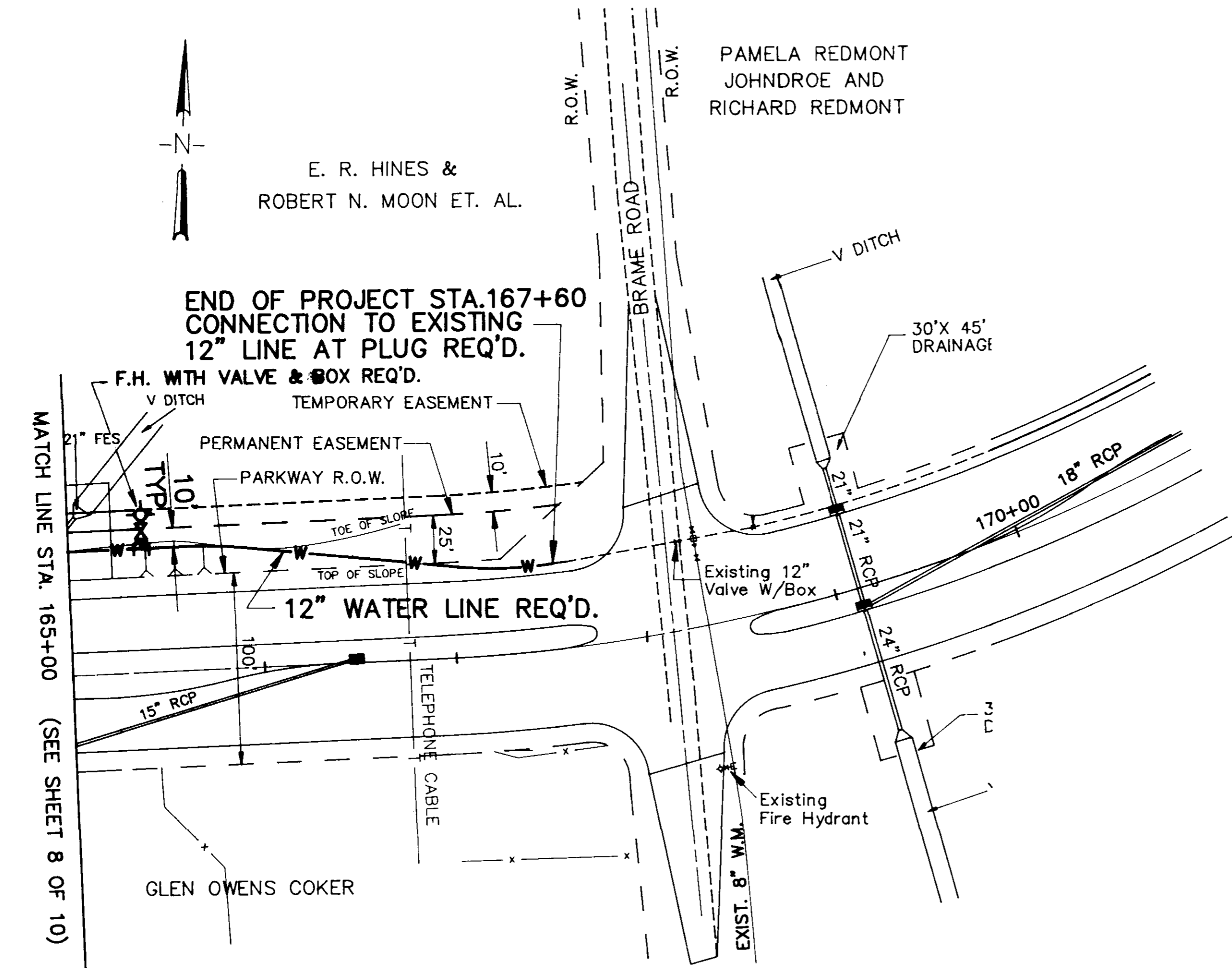
SCALE: 1"=50' HORIZ.  
1"= 5' VERT.



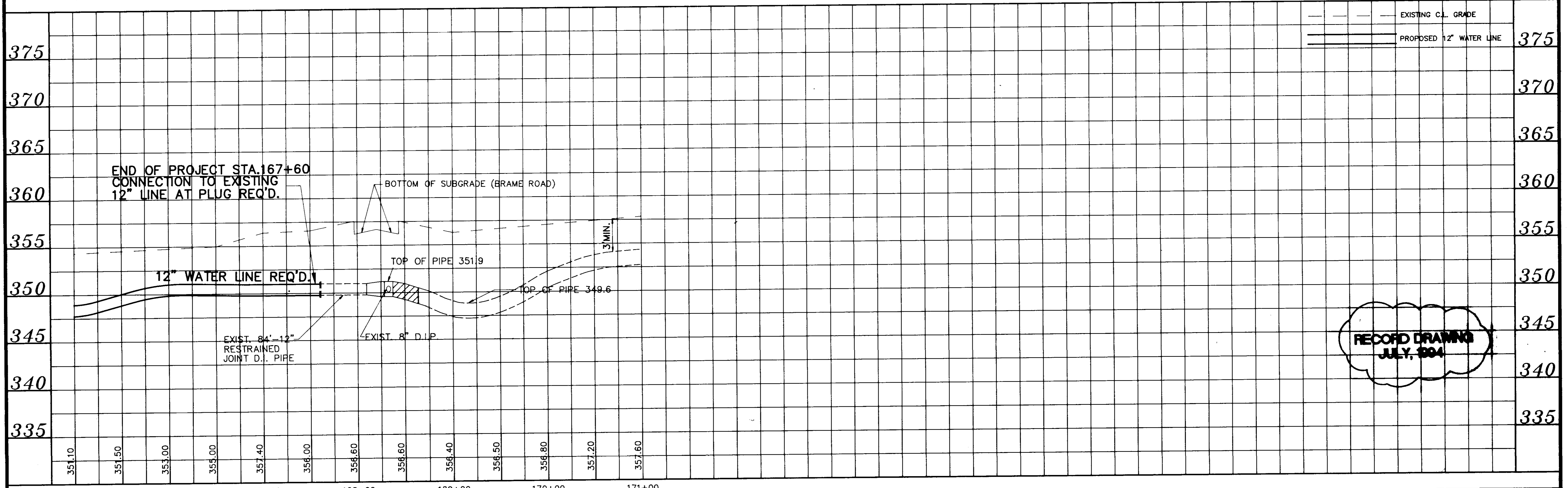
RECORD DRAWING  
JULY, 2004

DESIGNED W.L.M.	DATE 1-25-94	WAGGONER ENGINEERING INC. CONSULTING ENGINEERS JACKSON, BRANDON / PASCAGOULA, MISSISSIPPI	CITY OF RIDGELAND HIGHLAND COLONY PARKWAY WATER LINE-WEST OF BRAME RD. STA.150+00 TO STA.165+00	ACAD PATH ROUTE 90008\PROJOS
DRAWN C.S.	SCALE AS SHOWN			W.E.I. JOB NO. 90-008
NO.	DATE	BY	REVISIONS	



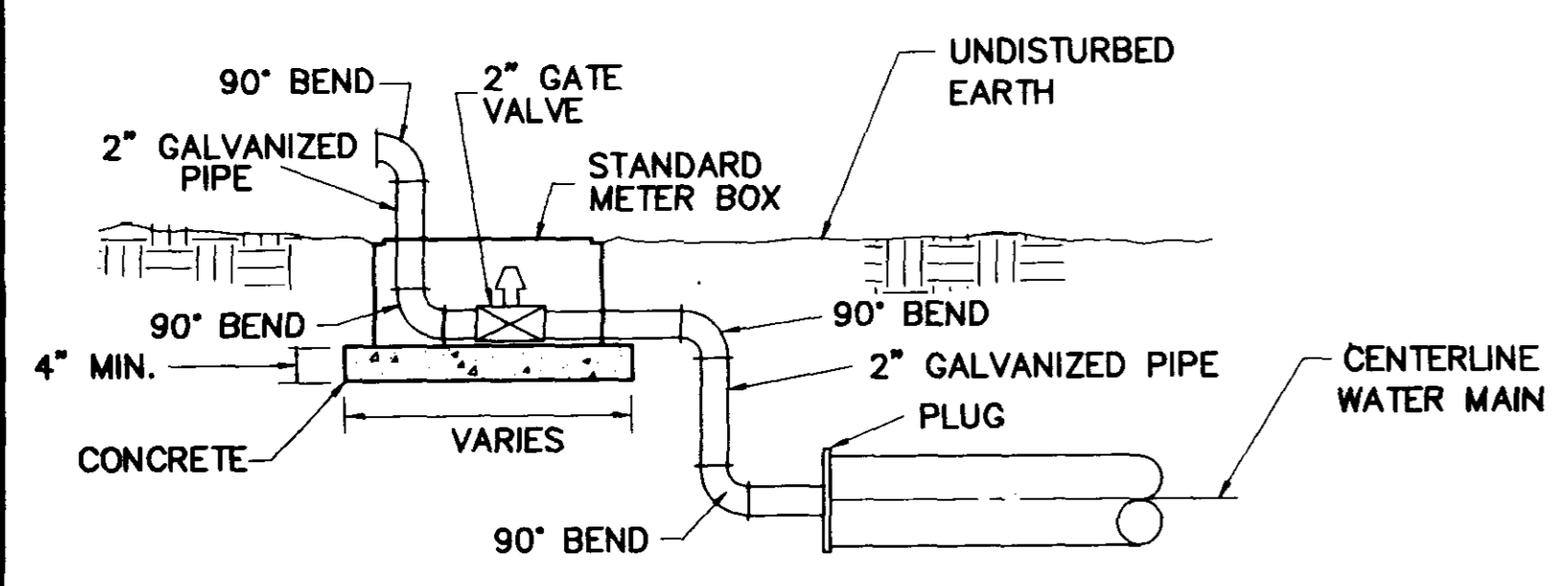


SCALE: 1"=50' HORIZ.  
1"= 5' VERT.

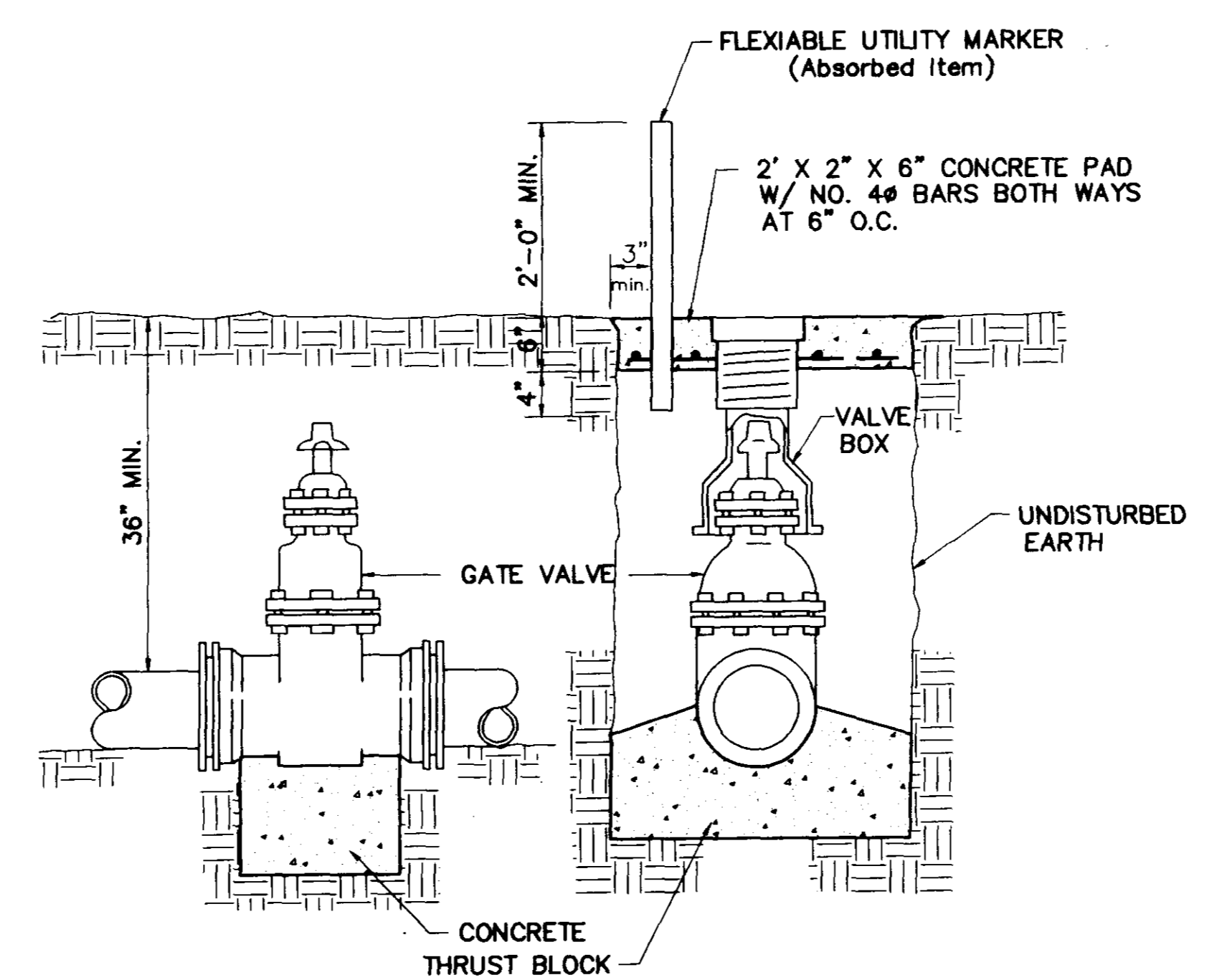


**RECORD DRAWING**  
JULY, 1994

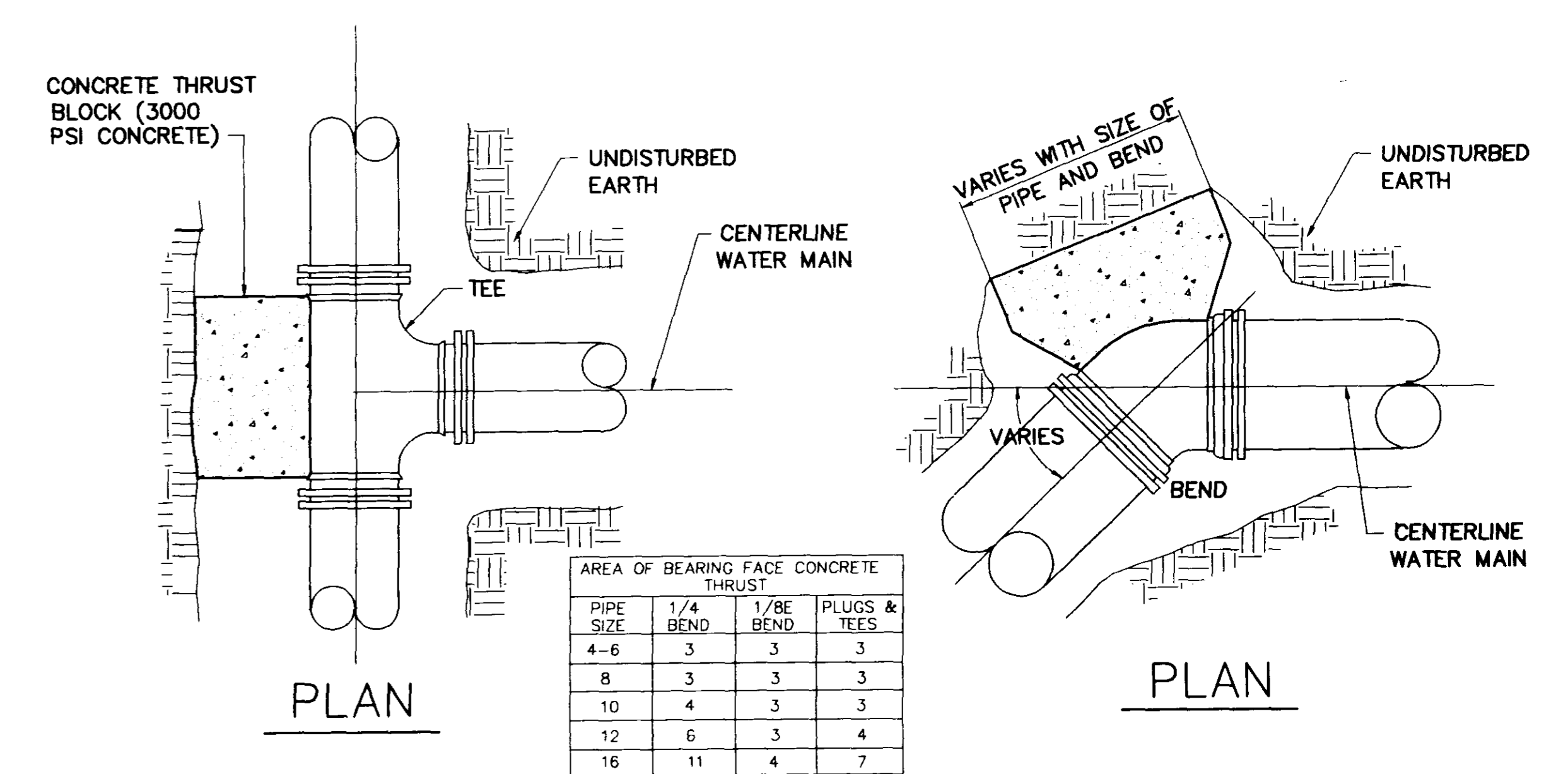
NO.		DATE		REVISIONS		BY		DESIGNED W.L.M.	DATE 1-25-94	<b>WAGGONER ENGINEERING INC. CONSULTING ENGINEERS</b> JACKSON, BRANDON / PASCAGOULA, MISSISSIPPI	CITY OF RIDGELAND <b>HIGHLAND COLONY PARKWAY WATER LINE - WEST OF BRAME RD.</b> STA. 165+00 TO STA. 167+60	ACAD PATH ROUTE 90008 VPP07	W.E.I. JOB NO. 90-008	SHEET NO. 9 OF 10
								SCALE AS SHOWN						



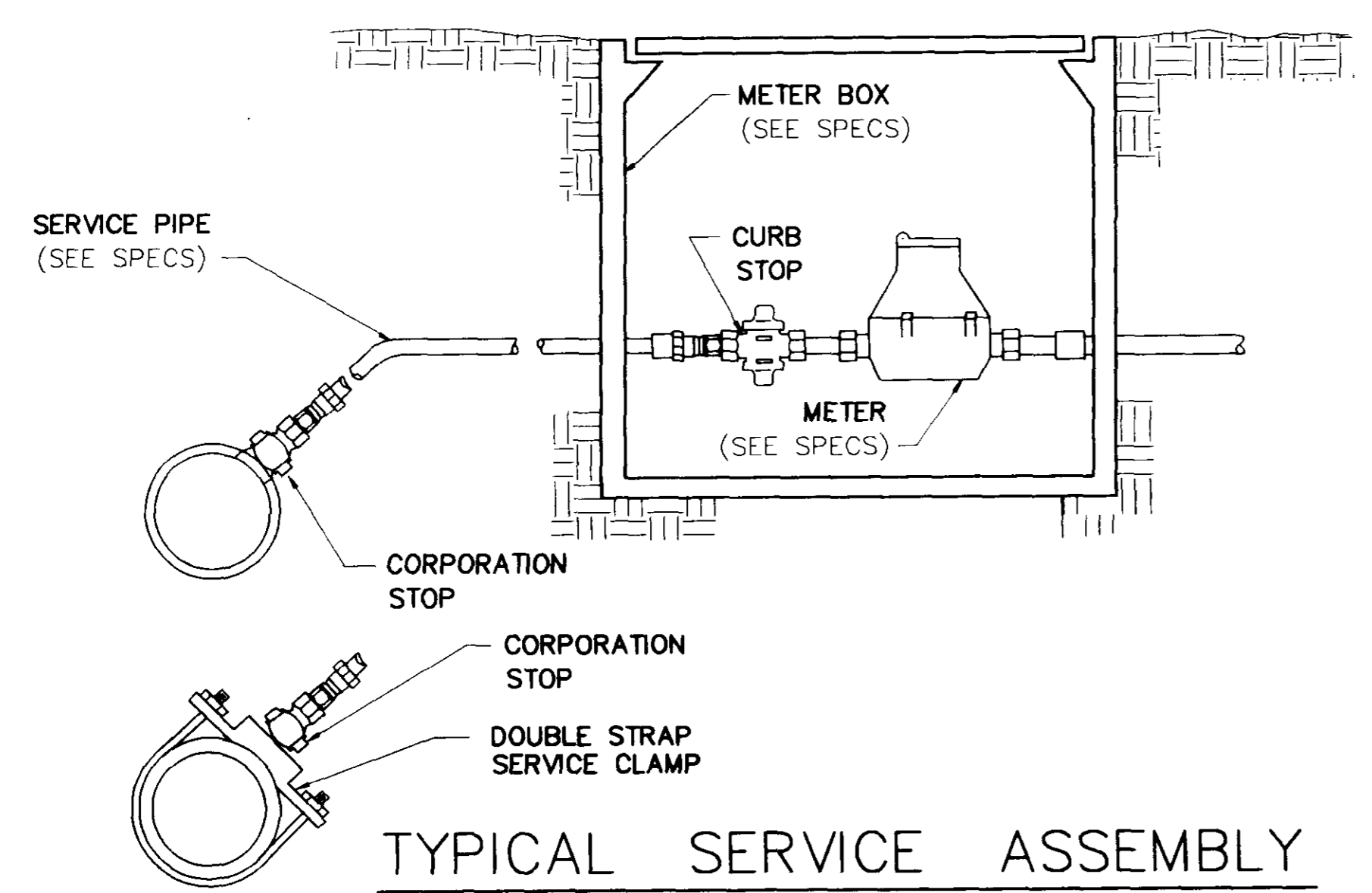
TYPICAL 2" BLOW-OFF DETAIL



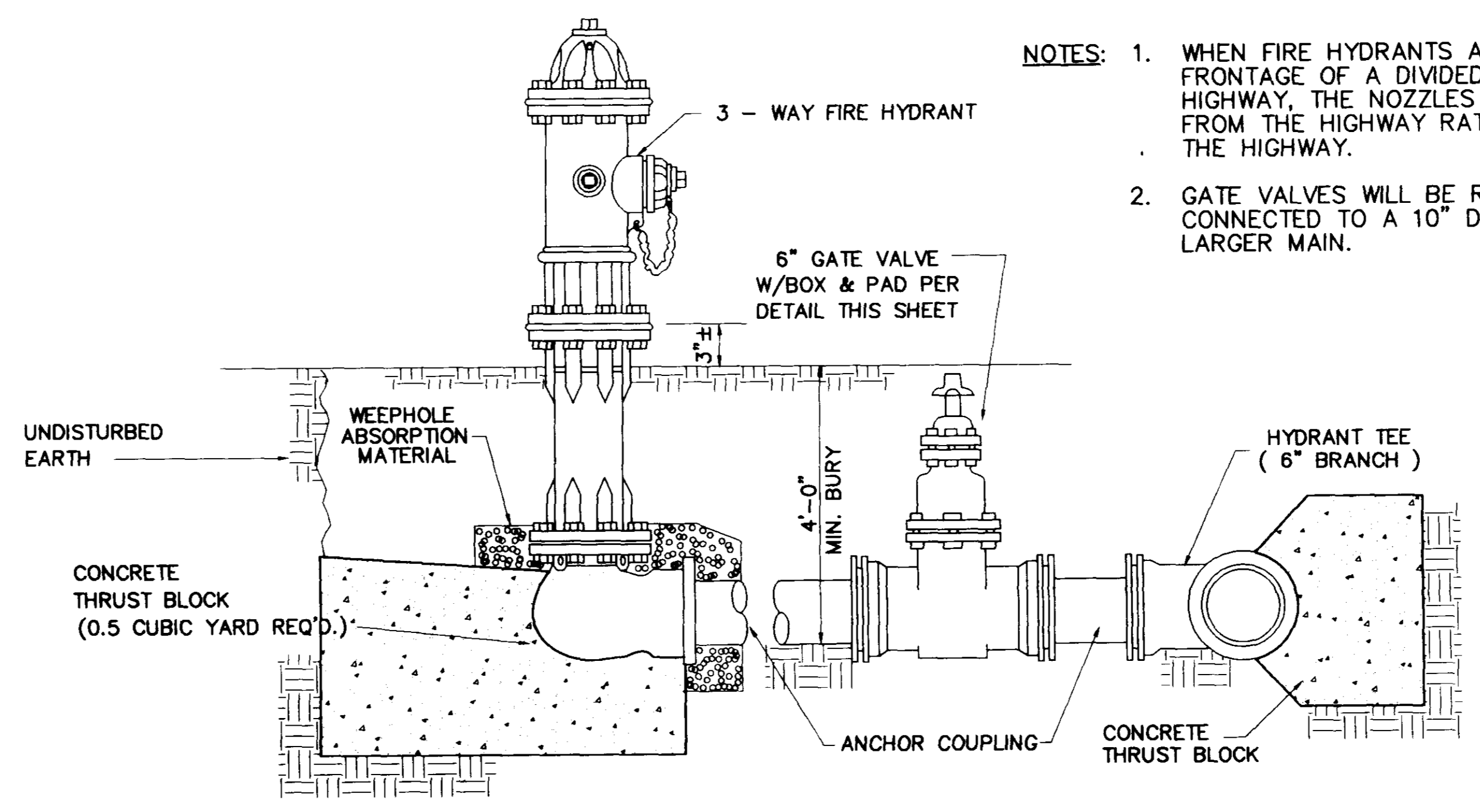
ELEVATION SECTION  
TYPICAL VALVE & BOX



PLAN SECTION  
SECTION  
BLOCKING DETAILS FOR TEES & BENDS



TYPICAL SERVICE ASSEMBLY



TYPICAL FIRE HYDRANT ASSEMBLY

- NOTES:
1. WHEN FIRE HYDRANTS ARE PLACED ON THE FRONTAGE OF A DIVIDED OR MULTI-LANE HIGHWAY, THE NOZZLES SHALL FACE AWAY FROM THE HIGHWAY RATHER THAN TOWARD THE HIGHWAY.
  2. GATE VALVES WILL BE REQUIRED WHEN CONNECTED TO A 10" DIAMETER OR LARGER MAIN.

RECORD DRAWING  
JULY, 1994

CITY OF RIDGELAND, MISSISSIPPI		
HIGHLAND COLONY PARKWAY WATER LINE WEST OF BRAME ROAD		
WATER STANDARD DETAILS		
WAGGONER ENGINEERING, INC. Consulting Engineers - Jackson, Mississippi		
DRAWN BY: C.S.	DATE: 1-26-94	SHEET NUMBER
REVIEWED BY: W.L.M.	SCALE: NOT TO SCALE	10 OF 10