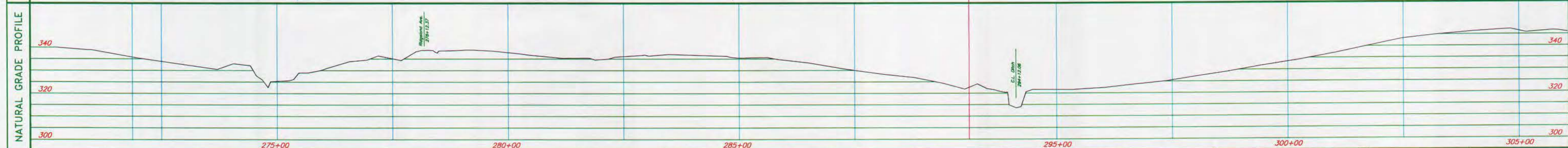
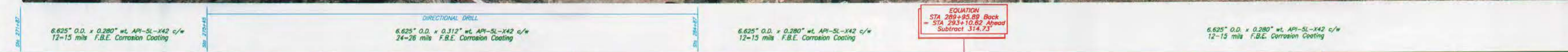


OWNERSHIP	PIPELINE STATIONING
Railroad Rd. 594.87' or 36.05 Rods	271+86.90 --- 271+86.90 --- Power Pole(22.10 LT)
Railroad Rd. 165.21' or 10.01 Rods	271+86.90 --- 271+86.90 --- Power Pole(22.10 LT)
James M. and Mary Creager 213.61' or 12.95 Rods	271+86.90 --- 271+86.90 --- Power Pole(22.10 LT)
R & S Corp. 177.35' or 10.75 Rods	271+86.90 --- 271+86.90 --- Power Pole(22.10 LT)
City of Ridgeland 716.69' or 43.44 Rods	271+86.90 --- 271+86.90 --- Power Pole(22.10 LT)
Harrel Children Trust 990.01' or 60.0 Rods	271+86.90 --- 271+86.90 --- Power Pole(22.10 LT)

Madison County, Mississippi

Sections 19, T 7 N, R 2 E



PIPE SUMMARY			
FROM	TO	LIN. FT.	TYPE
271+87	275+45	358	A
275+45	284+87	942	B
284+87	289+96	509	A
293+11	305+00	1189	A

LEGEND			
	DITCH		FOREIGN PIPELINE
	COMMUNICATION LINE		POWER LINE
	FENCE		RECTIFIER
	TEST LEAD		VALVE
	CLEAN UP		CREEK
	SECTION LINES		ROAD (GRAVEL)
	ROAD (PAVED)		HI VOLTAGE LINE

INSPECTORS	
CHIEF:	TYPE
ROW:	A
WELDING:	12-15 mils F.B.E. Corrosion Coating
TIE IN:	B
BACKFILL:	24-26 mils F.B.E. Corrosion Coating
CLEAN UP:	

PIPE SPECIFICATIONS			
TYPE	DESCRIPTION	LIN. FT.	NO. OF WELDS:
A	6.625" O.D. x 0.280" wt. API-5L-X42 c/w	2056	NO. OF X-RAYS:
B	6.625" O.D. x 0.312" wt. API-5L-X42 c/w	942	TEST PRESSURE: 2160 P.S.I.G.

SPECIFICATIONS			
CONTRACTOR:	DATE CONST. START:	DATE CONST. END:	M.A.O.P. : 1440 P.S.I.G.

B-S-H ENGINEERING, INC.
2813 TOWNSEND ST. MONROE, LA 71201

SURVEY CONTRACTOR
DALE STOCKSTILL & ASSOC.
P.O. BOX 1000
PICAYUNE, MISSISSIPPI

KOCH GATEWAY PIPELINE CO.
SOUTH EAST DIVISION/ KENNER, LA.

6" PIPELINE RELOCATION PROJECT
U.S. HIGHWAY 51
RIDGELAND/MADISON, MISSISSIPPI

DATE: May 15, 2000
SCALE: Hor: 1"=100' Ver: 1"=20'
SHEET 2 OF 9

SUMMARY

NATURAL GRADE PROFILE

MATCH LINE STA. 271+86.90

MATCH LINE STA. 305+00

EQUATION
STA 289+96.89 Back
= STA 293+10.82 Ahead
Subtract 314.73'

EQUATION
STA 289+96.89 Back
= STA 293+10.82 Ahead
Subtract 314.73'

