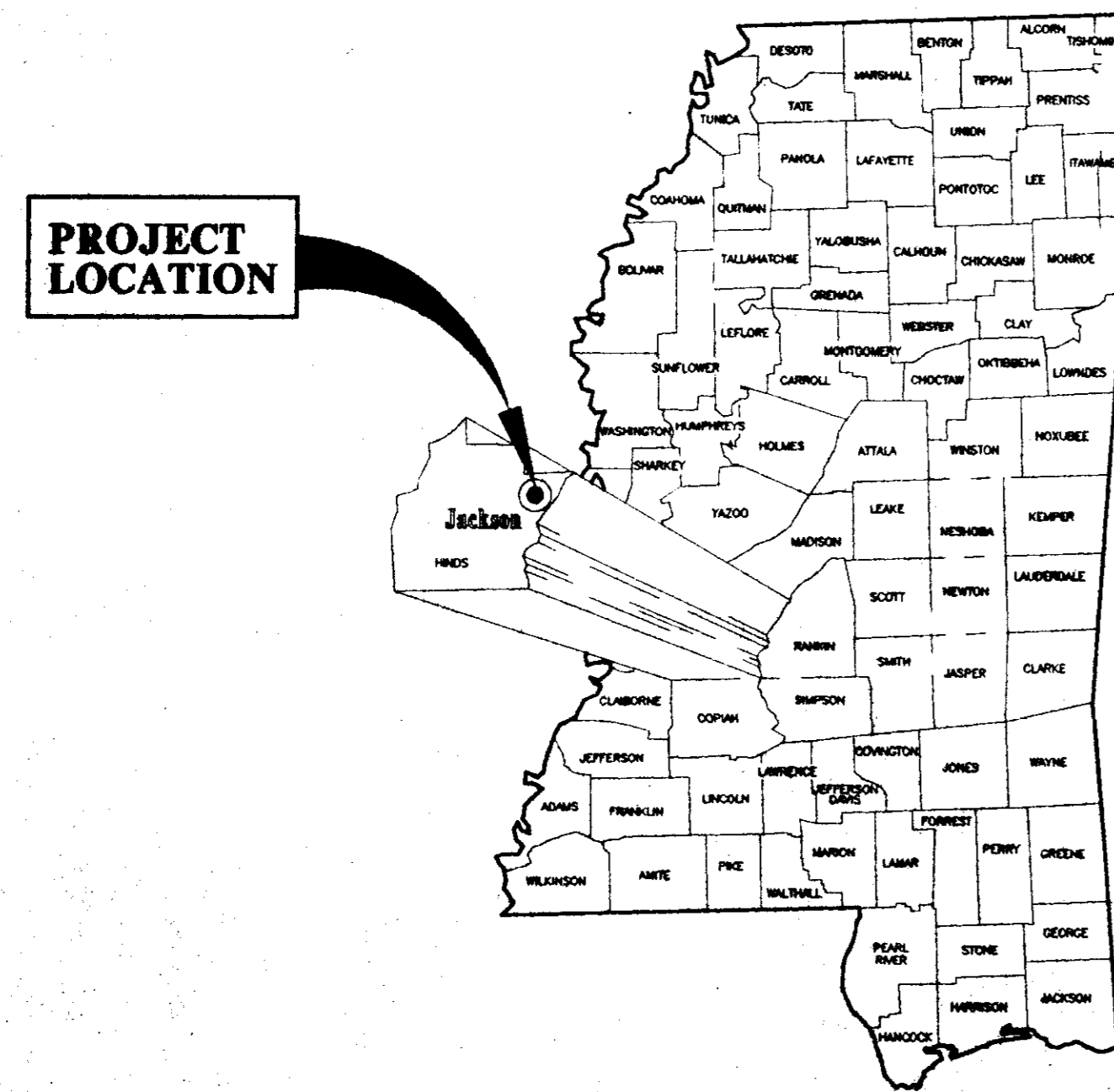
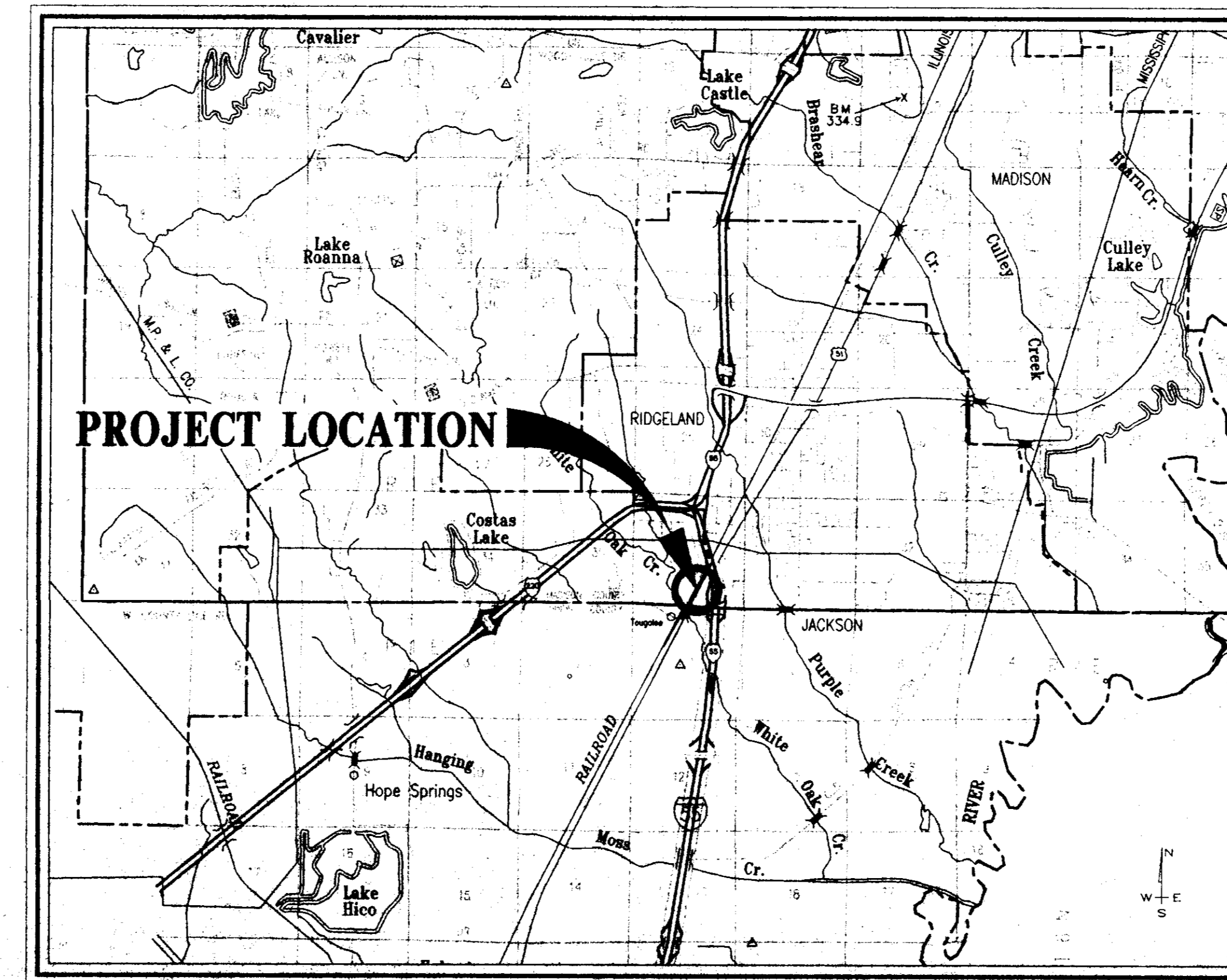


# CONSTRUCTION PLANS FOR *Highway 51, I-55 to County Line Road* WATER & SANITARY SEWER IMPROVEMENTS

## WILLIAM G. COOK, JR. AGENT FOR ANDERSON, STEPHENS & EDWARDS



VICINITY MAP



LOCATION MAP  
SCALE: 1"=1 MILE

**RECEIVED**

APR 30 1996

PUBLIC WORKS DEPT.

**RECORD DRAWING**  
THESE DRAWINGS SHOW AS BUILT  
LOCATIONS OF WATER AND SEWER  
SYSTEMS ONLY.

BY: *R. Varner* DATE: 4/29/96

**STERLING**  
*Consultants*  
INCORPORATED

**PWP-00103** <sup>835</sup>  
*Rhonda Creel Varner*  
RHONDA CREEL VARNER, P.E.  
MS LICENSE NO. 1744

**GENERAL NOTES**

1. ALL CONSTRUCTION SHALL BE IN ACCORDANCE WITH THE CITY OF RIDGELAND STANDARD SPECIFICATIONS FOR WATER AND SANITARY SEWER CONSTRUCTION.
2. CONTRACTOR SHALL COORDINATE AND SCHEDULE CONNECTION INTO CITY OF JACKSON UTILITIES WITH THE PUBLIC WORKS DEPARTMENT PRIOR TO ANY WORK.
3. CONTRACTOR SHALL CONTROL EROSION AT ALL TIMES DURING CONSTRUCTION SO THAT NO SEDIMENT LEAVES THE SITE VIA DRAINAGEWAYS. ANY SEDIMENT THAT ACCUMULATES ON PAVED AREAS SHALL BE CLEARED IMMEDIATELY. NO EXCAVATION IS TO BE PLACED ON ANY STREET OR PAVEMENT AT ANY TIME DURING CONSTRUCTION.
4. SEDIMENT BARRIERS SHALL BE HAY BALES PLACED IN DRAINAGEWAYS AS NEEDED TO PREVENT SEDIMENT FROM LEAVING CONSTRUCTION AREAS.
5. ALL STORM DRAINAGE PIPE AND INLETS SHALL BE FLUSHED AND CLEARED OF ANY CONSTRUCTION MATERIALS AND/OR SEDIMENT UPON PROJECT COMPLETION.
6. WATER MAINS SHALL BE INSTALLED WITH 4' MINIMUM COVER UNDER ROADWAY SECTIONS AND 3' MINIMUM COVER ELSEWHERE.
7. CONTRACTOR SHALL MAINTAIN RECORDS DURING CONSTRUCTION OF HORIZONTAL AND VERTICAL LOCATION OF ALL WATER AND SEWER LINES AND APPURTENANCES FOR AS BUILT RECORDS.
8. CONTRACTOR SHALL SUBMIT A TRAFFIC CONTROL PLAN TO THE CITY OF JACKSON AND/OR THE CITY OF RIDGELAND ENGINEERING DEPARTMENT FOR REVIEW AND APPROVAL.

**LEGEND**

- PROPERTY LINE
- RIGHT OF WAY LINE
- EASEMENT
- CENTER LINE
- EDGE OF PAVEMENT
- BACK OF CURB
- EXISTING CONTOUR
- PROPOSED SANITARY SEWER & MANHOLE
- STORM SEWER & CATCH BASIN
- EXISTING SANITARY SEWER
- WATER LINE
- FENCE
- BUILDING
- WATER VALVE
- FIRE HYDRANT
- TEE

**INDEX TO DRAWINGS**

- 1 COVER SHEET
- 2 GENERAL NOTES AND INDEX TO DRAWINGS
- 3 PLAN AND PROFILE - SANITARY SEWER & WATER LINE STA. 0+00 - STA. 14+19.80
- 4 STANDARD SANITARY SEWER DETAILS
- 5 STANDARD WATER DETAILS

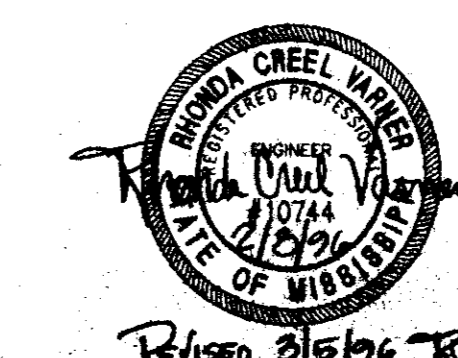
**RECEIVED**

APR 30 1996

PUBLIC WORKS DEPT.

**RECORD DRAWING**  
 THESE DRAWINGS SHOW AS BUILT  
 LOCATIONS OF WATER AND SEWER  
 SYSTEMS ONLY.

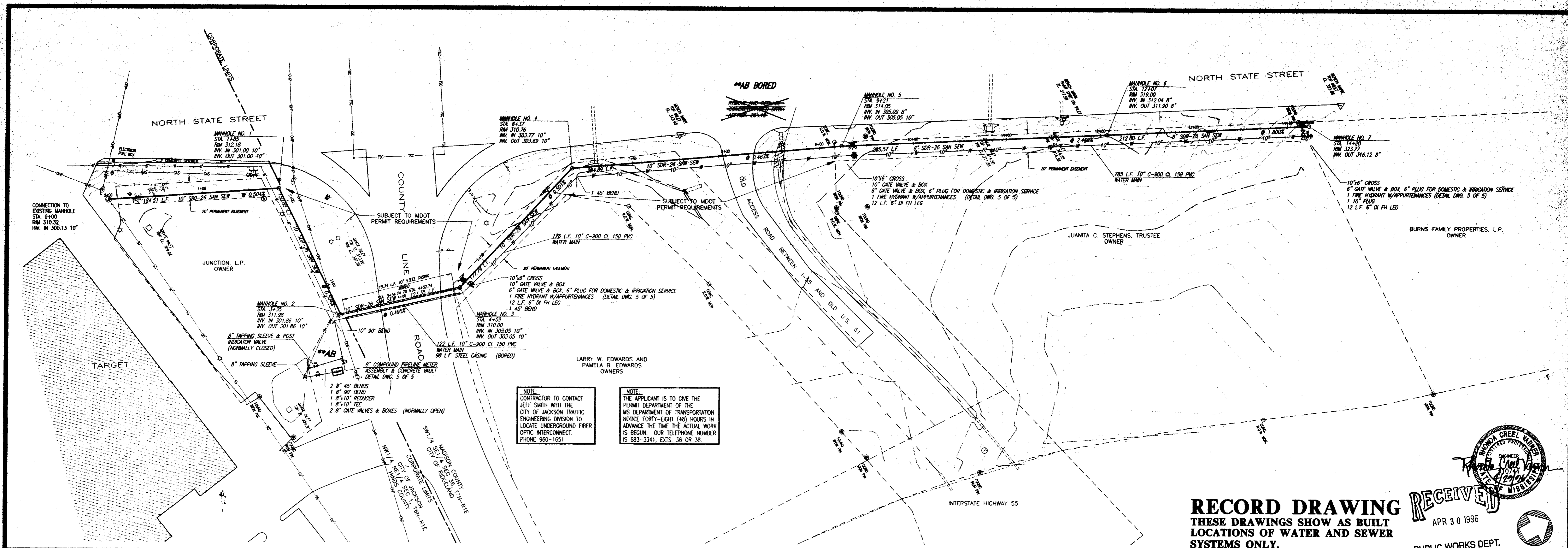
BY: *R. Hanna* DATE: 4/29/96



WATER & SANITARY SEWER IMPROVEMENTS WILLIAM G. COOK, JR., AGENT FOR ANDERSON, STEPHENS & EDWARDS			
<b>GENERAL NOTES                  AND INDEX TO DRAWINGS</b>			
<b>HINDS &amp; MADISON                  COUNTIES, MISSISSIPPI</b>			
DESIGN - RLV	DATE 01/01/96	<b>STERLING                  Consultants</b>	DRAWING NO.
DRAWN - RDP	DATE 01/01/96		2 of 5
CHECKED - RLV	DATE 01/01/96		
SCALE: AS SHOWN			

C:\DRAWING\PROJECTS\JACKSON-005 - F11 Feb 9 10 01 24 1996 Dot McElroy - STERLING CONSULTANTS, INC.

REVISION	BY	DATE



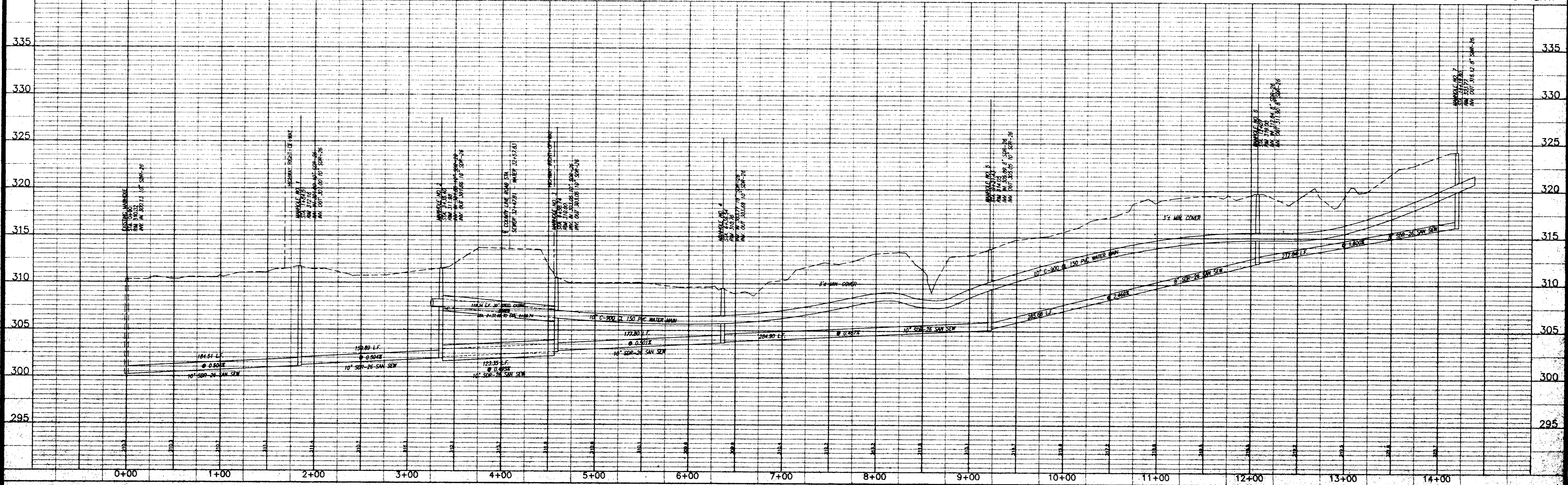
NOTE:  
 THE CONTRACTOR TO CONTACT  
 JEFF SMITH WITH THE  
 CITY OF JACKSON TRAFFIC  
 ENGINEERING DIVISION TO  
 LOCATE UNDERGROUND FIBER  
 OPTIC INTERCONNECT.  
 PHONE 960-1651

NOTE:  
 THE APPLICANT IS TO GIVE THE  
 PERMIT DEPARTMENT OF THE  
 MISSISSIPPI DEPARTMENT OF TRANSPORTATION  
 NOTICE FORTY-EIGHT (48) HOURS IN  
 ADVANCE THE TIME THE ACTUAL WORK  
 IS BEGUN. OUR TELEPHONE NUMBER  
 IS 683-3341, EXTS. 36 OR 38.

AS BUILT CHANGES	RDP	04/25/96
**AB INDICATES SIGNIFICANT AS BUILT MODIFICATIONS	RDP	04/25/96
ADDED GATE VALVES & NOTE PER REVIEW	RDP	03/02/96

**RECORD DRAWING**  
 THESE DRAWINGS SHOW AS BUILT  
 LOCATIONS OF WATER AND SEWER  
 SYSTEMS ONLY.  
 BY: *RC* DATE: 4/29/96

RECEIVED  
 APR 30 1996  
 PUBLIC WORKS DEPT.  
 SCALE 1"=50' HORIZ.  
 1"=5' VERT.



WATER & SANITARY SEWER  
 IMPROVEMENTS  
 NORTH STATE STREET & COUNTY LINE ROAD

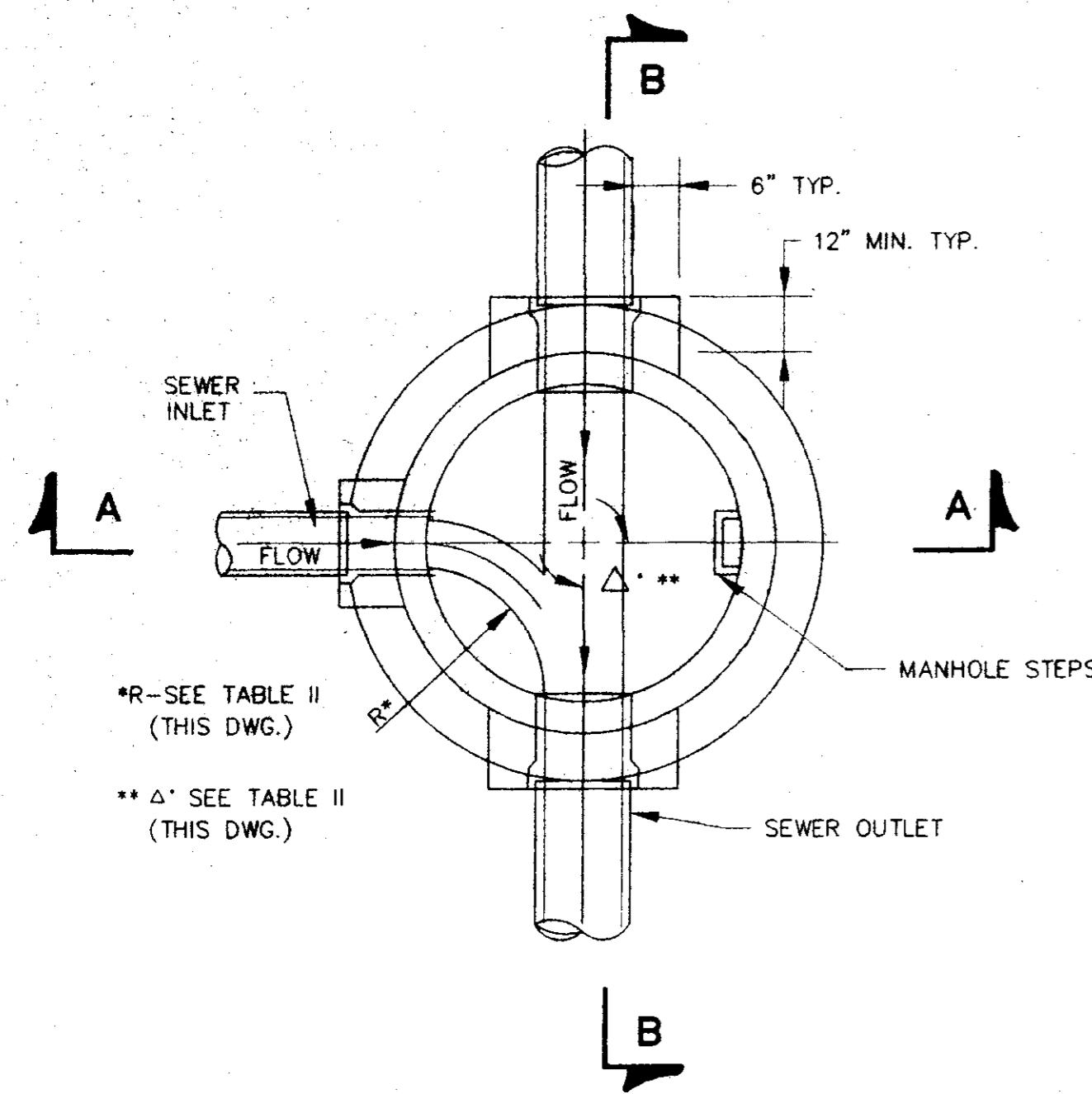
PLAN AND PROFILE - SANITARY SEWER & WATER LINE  
 STA. 0+00 - STA. 14+19.80

WILLIAM G. COOK, JR.  
 AGENT FOR  
 ANDERSON, STEPHENS & EDWARDS

Designed By	REV	DATE	03/28/96
Drawn By	RDP	DATE	03/28/96
Checked By	REV	DATE	03/28/96
Scale	1"=50' HORIZ.	1"=5' VERT.	

Drawing No.  
**3 of 5**

C:\projects\ACTION\junc-002 - Thu Apr 25 15:17:56 1996 - R. David Bates - Sterling Consultants, Inc.

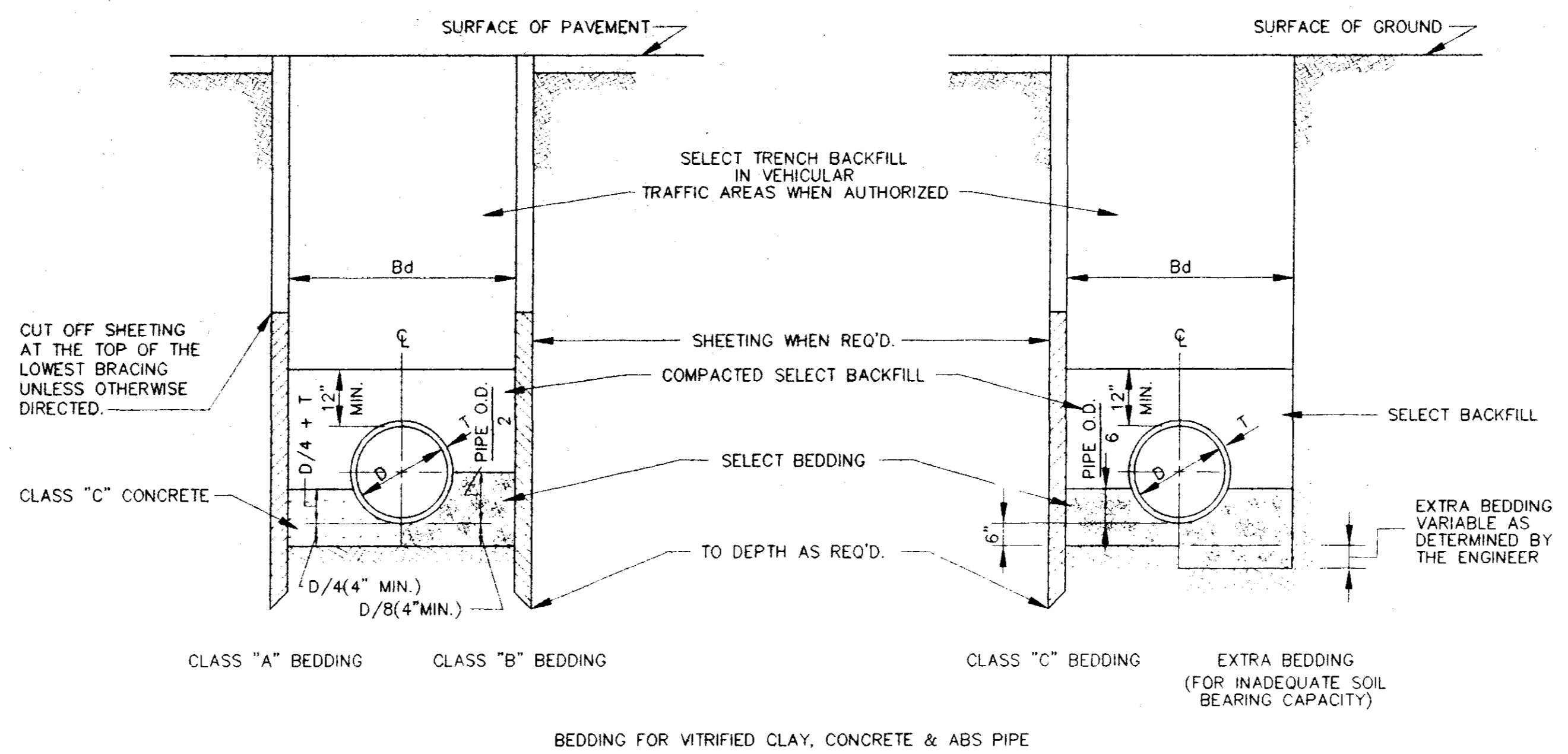


**SECTIONAL PLAN  
STANDARD MANHOLE**  
NOT TO SCALE

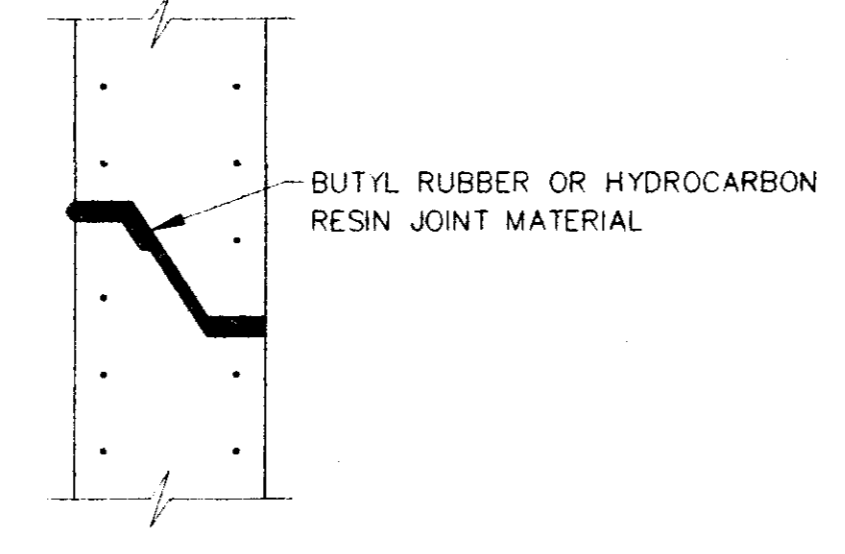
TABLE II  
GOVERNING DIMENSIONS FOR MANHOLES

PIPE SIZE	ANGLE	BASE DIAMETER **	"R" *
8" THRU 12"	0° TO 90°	4'	1'-6"
15"	0° TO 60°	4'	1'-10"
15"	60° TO 90°	4'	1'-10"
18"	0° TO 60°	4'	2'-3"
18"	60° TO 90°	4'	1'-10"
21"	0° TO 60°	4'	2'-4"
21"	60° TO 90°	5'	3'-0"
24"	0° TO 45°	4'	2'-3"
24"	45° TO 90°	5'	3'-9"
30"	0° TO 60°	5'	3'-9"
30"	60° TO 90°	6'	2'-8"
36"	0° TO 60°	6'	4'-6"
36"	60° TO 90°	7'	3'-11"
42"	0° TO 60°	7'	5'-3"
42"	60° TO 90°	8'	4'-7"
48"	0° TO 60°	8'	6'-0"
48"	60° TO 90°	9'	5'-3"

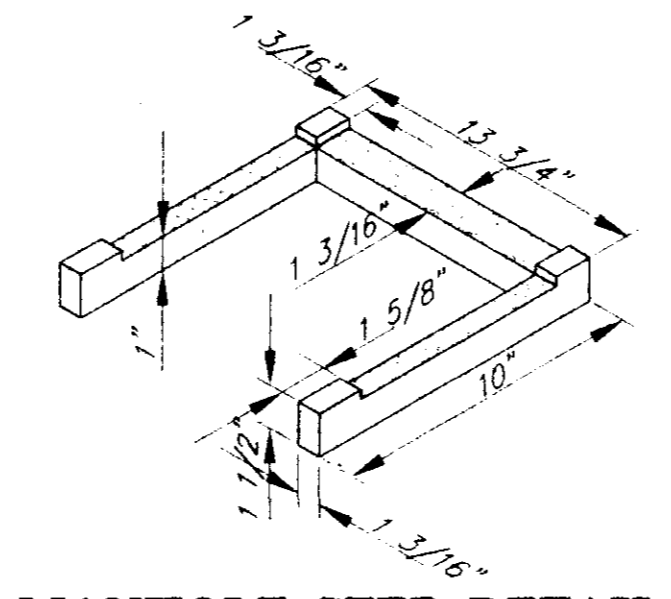
\* SEE SECTIONAL PLAN, STANDARD MANHOLE  
\*\* PRECAST MANHOLE



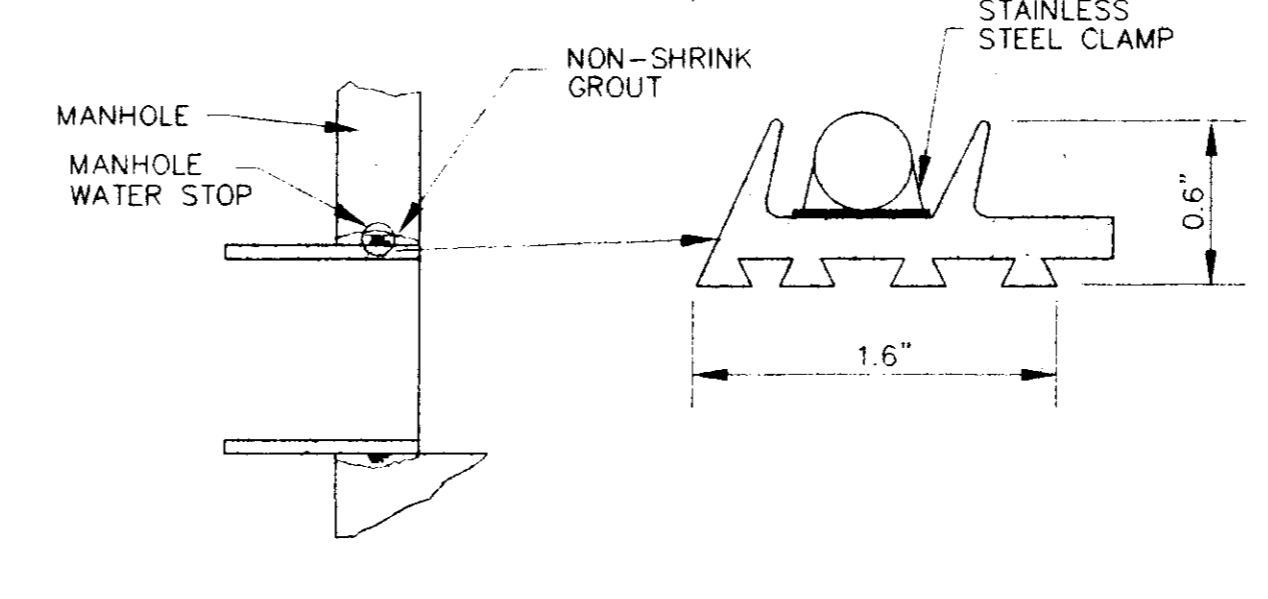
**TYPICAL TRENCH DETAILS**  
NOT TO SCALE



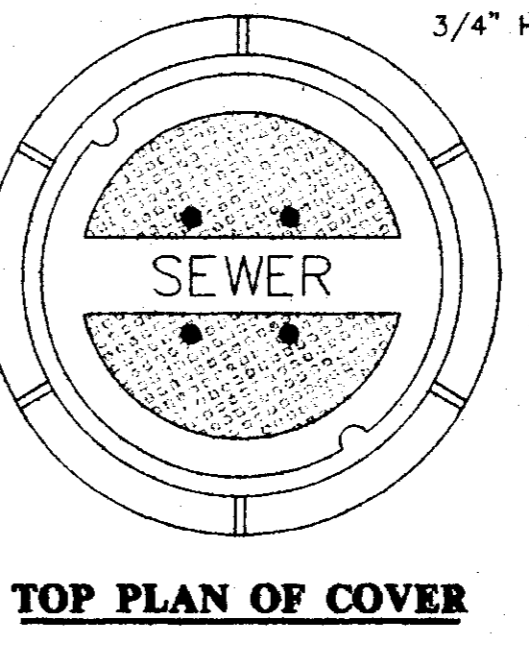
**TYPICAL PRECAST CONCRETE  
MANHOLE JOINT DETAIL**  
N.T.S.



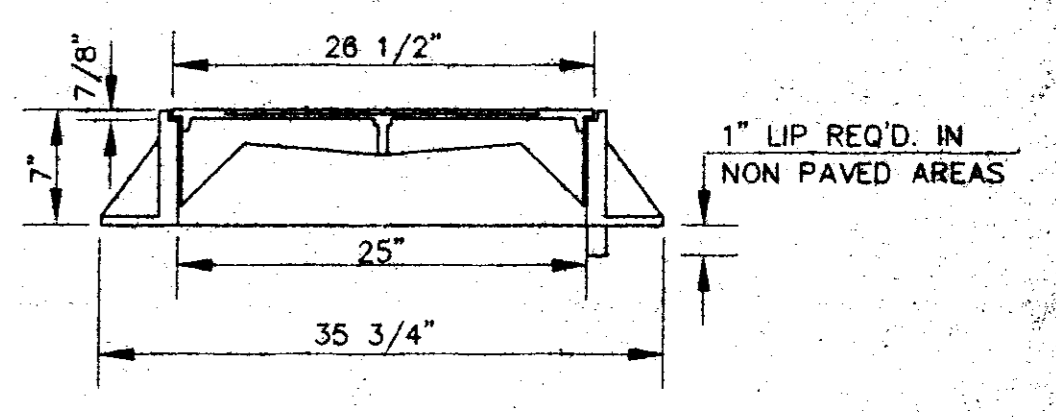
**MANHOLE STEP DETAIL**  
NOT TO SCALE



**TYPICAL MANHOLE WATER STOP  
FOR ABS, CLAY OR PVC PIPE**  
EXISTING AND "STRADDLE" MANHOLES  
N.T.S.

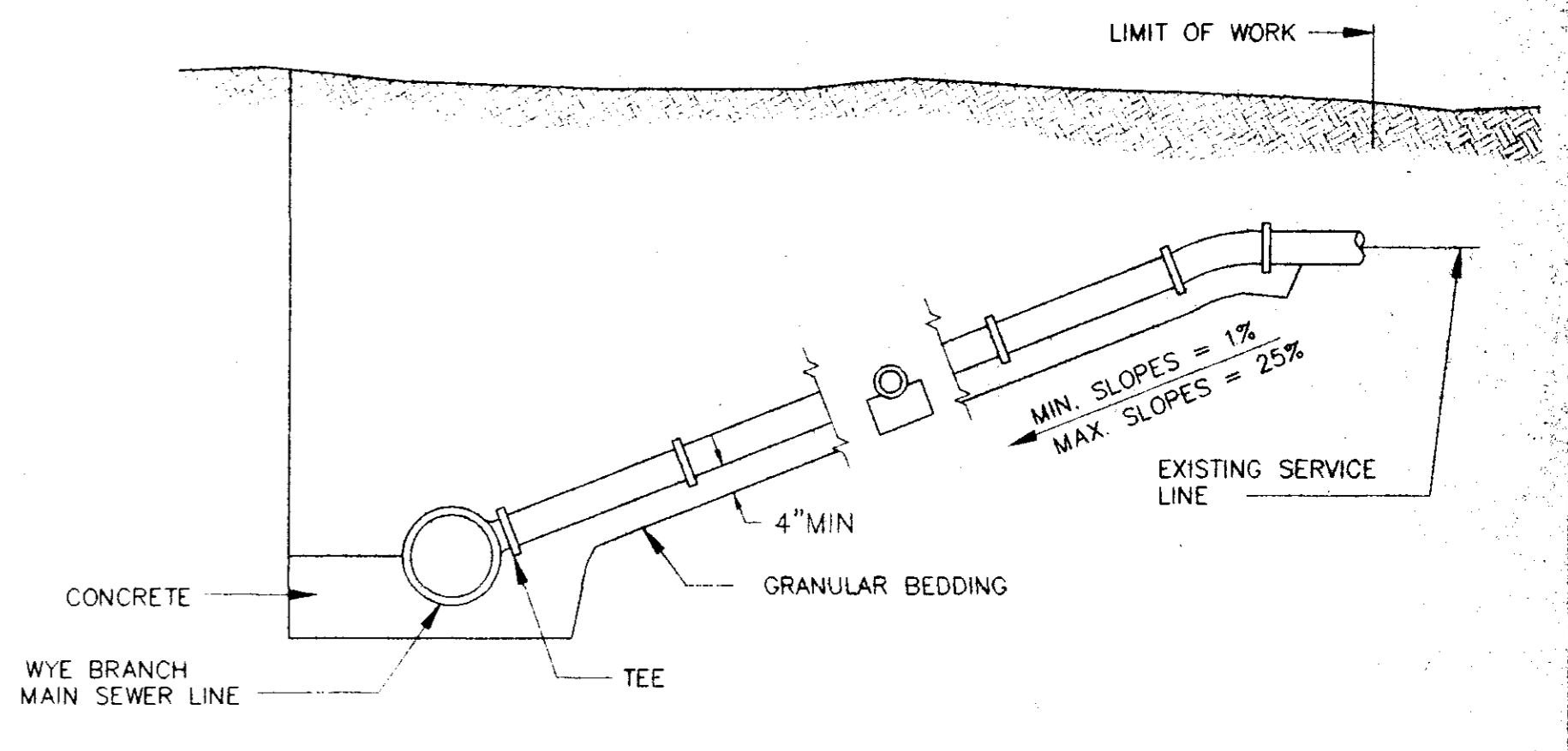


**TOP PLAN OF COVER**

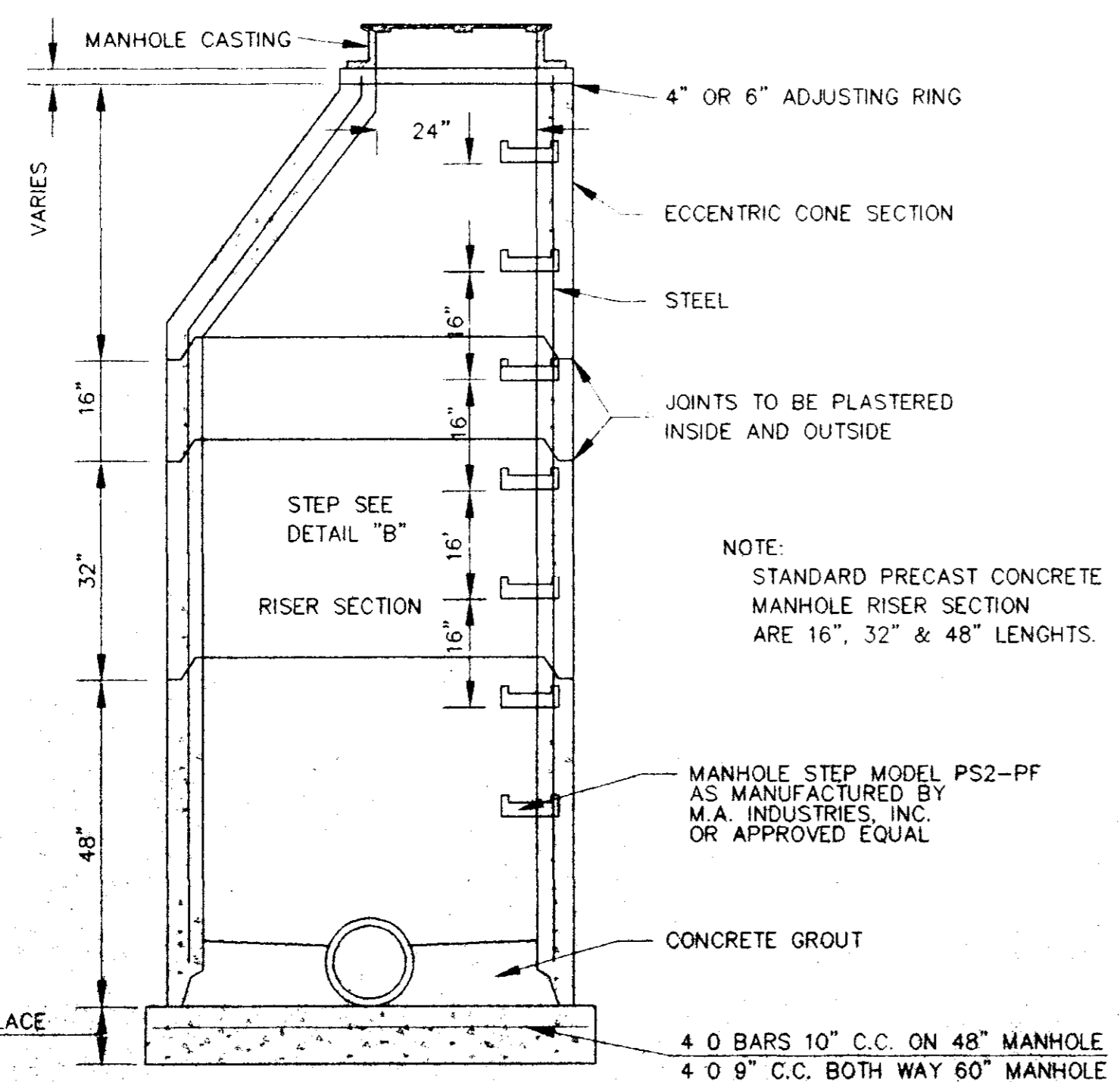


**SECTION**

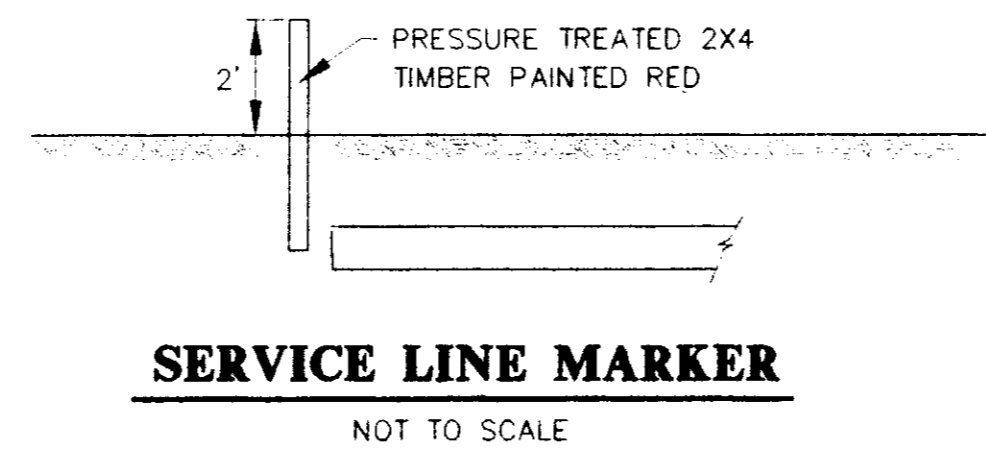
FRAME & COVER WEIGHT 420 LBS.  
**STANDARD MANHOLE FRAME AND COVER**  
N.T.S.



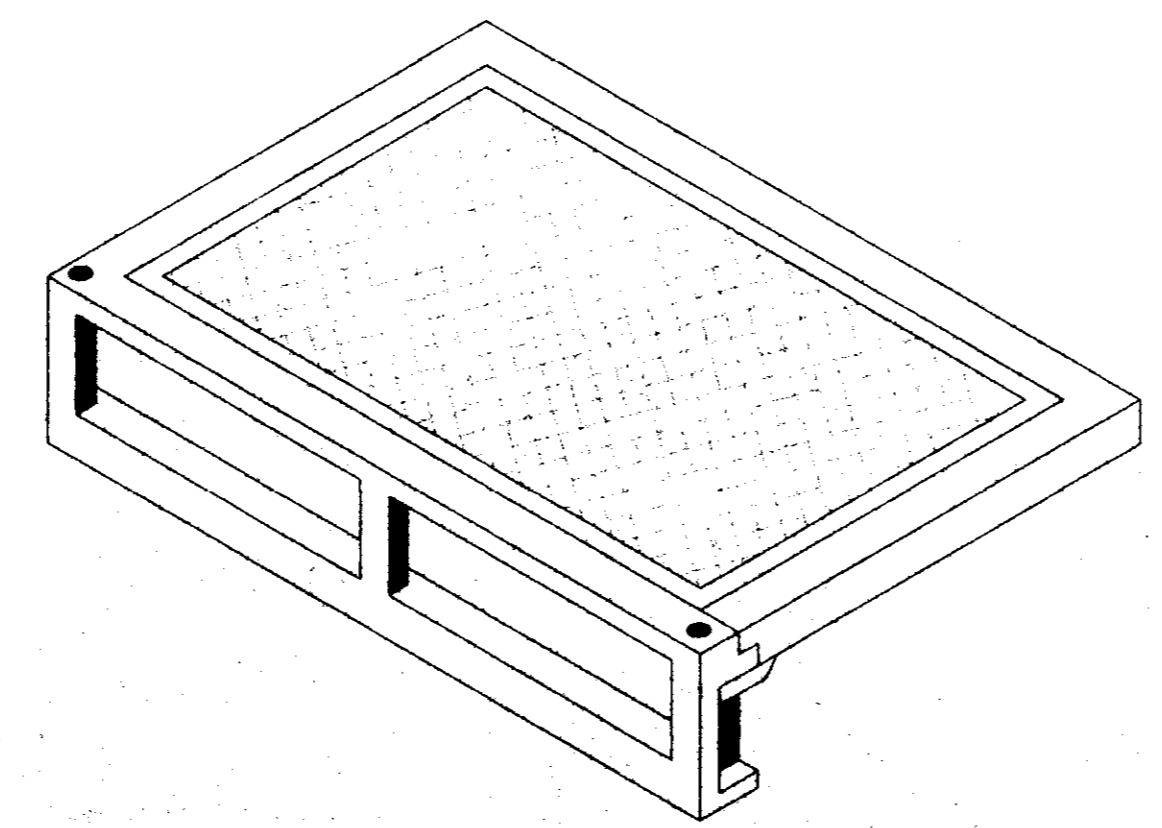
**TYPICAL SERVICE LINE CONNECTION**  
NOT TO SCALE



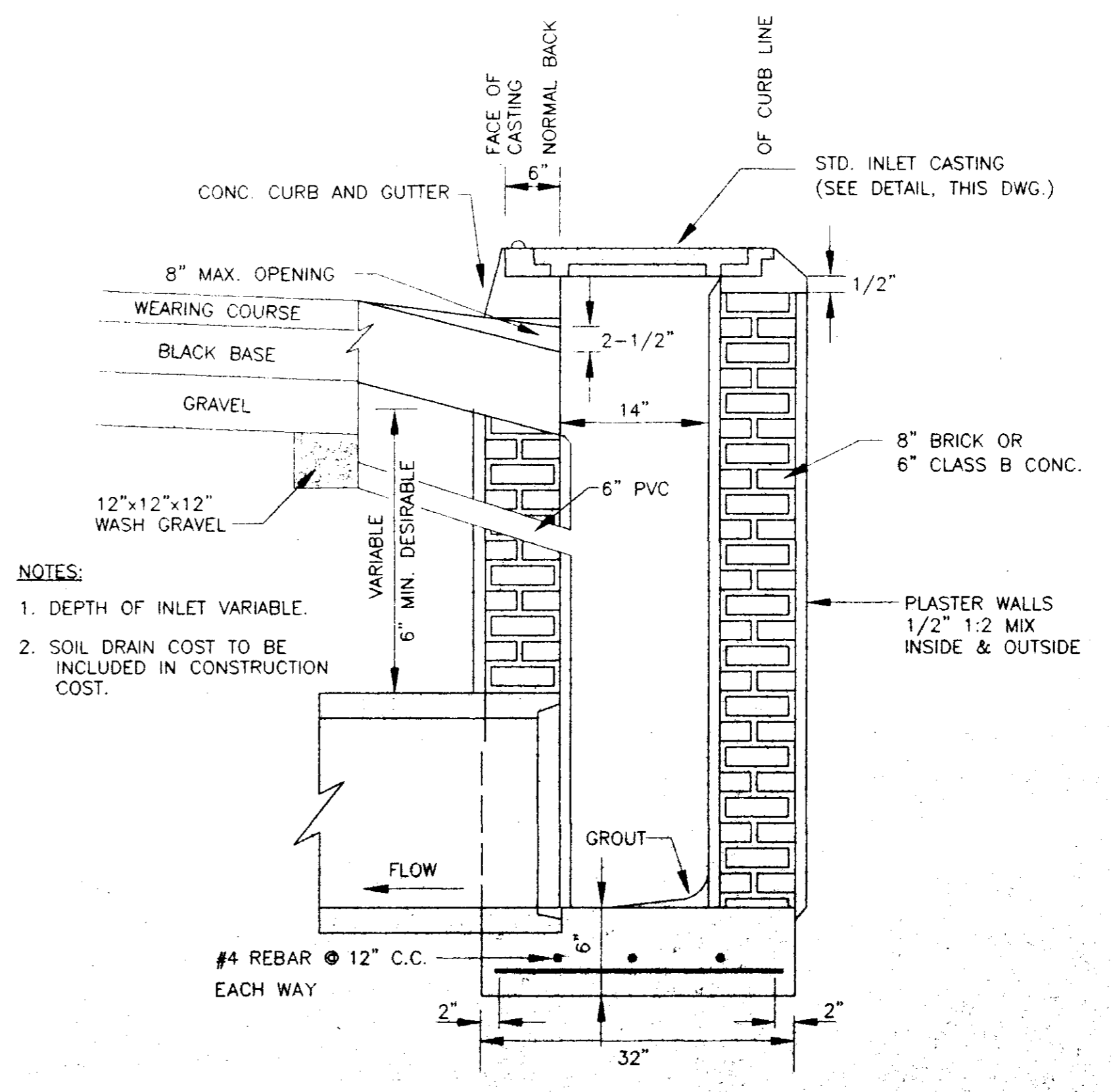
**SECTION OF PRECAST CONCRETE MANHOLE**  
N.T.S.



**SERVICE LINE MARKER**  
NOT TO SCALE



**STANDARD CURB INLET CASTING**  
(VULCAN V-4302-1 OR HARPER RCB-7)  
N.T.S.



**SECTION OF STANDARD CURB INLET**

RECEIVED  
APR 30 1976  
PUBLIC WORKS DEPT.

**RECORD DRAWING**  
THESE DRAWINGS SHOW AS BUILT  
LOCATIONS OF WATER AND SEWER  
SYSTEMS ONLY.  
DATE: 4/29/76



WATER & SANITARY SEWER IMPROVEMENTS  
WILLIAM G. COOK, JR. AGENT FOR  
ANDERSON, STEPHENS & EDWARDS

**STANDARD  
SANITARY SEWER DETAILS**

**HINDS & MADISON  
COUNTIES, MISSISSIPPI**

REVISION	DATE	BY	DATE	DRAWING NO.
ADDED WATER STOP & CURB INLET DETAILS PER REVIEW	09/28/74	RDP	09/28/74	4-5
BY	DATE	BY	DATE	

STERLING  
Consultants

© 1974 W.S. ANDERSON & SONS, INC. Top Ref: 5 13 22 04 1996 P. David Bates - Sterling Consultants, Inc.

