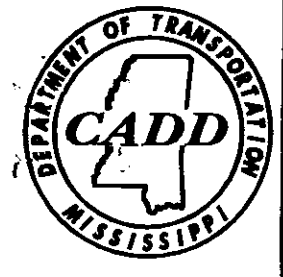
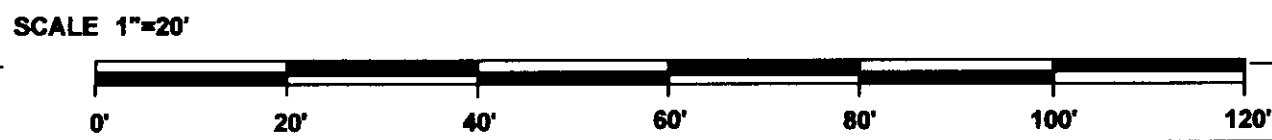


LOWER EXISTING 8" WATER LINE TO APPROX. 5' DEEP FROM STATION 132+00 THROUGH STATION EQUATION TO STA. 129+00

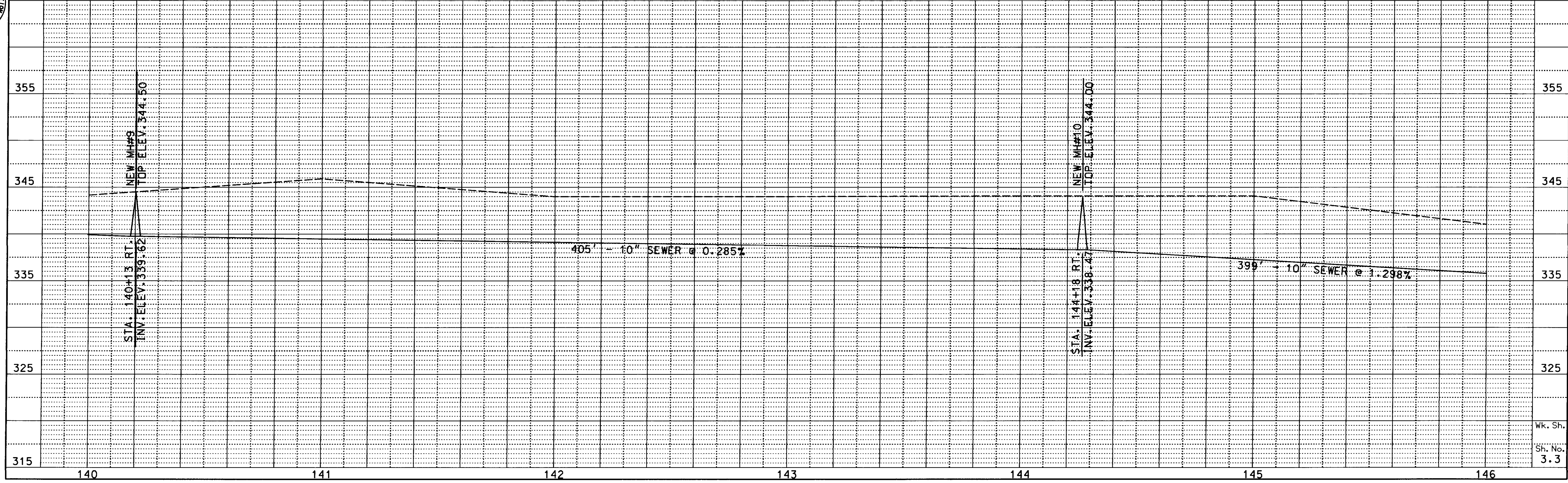
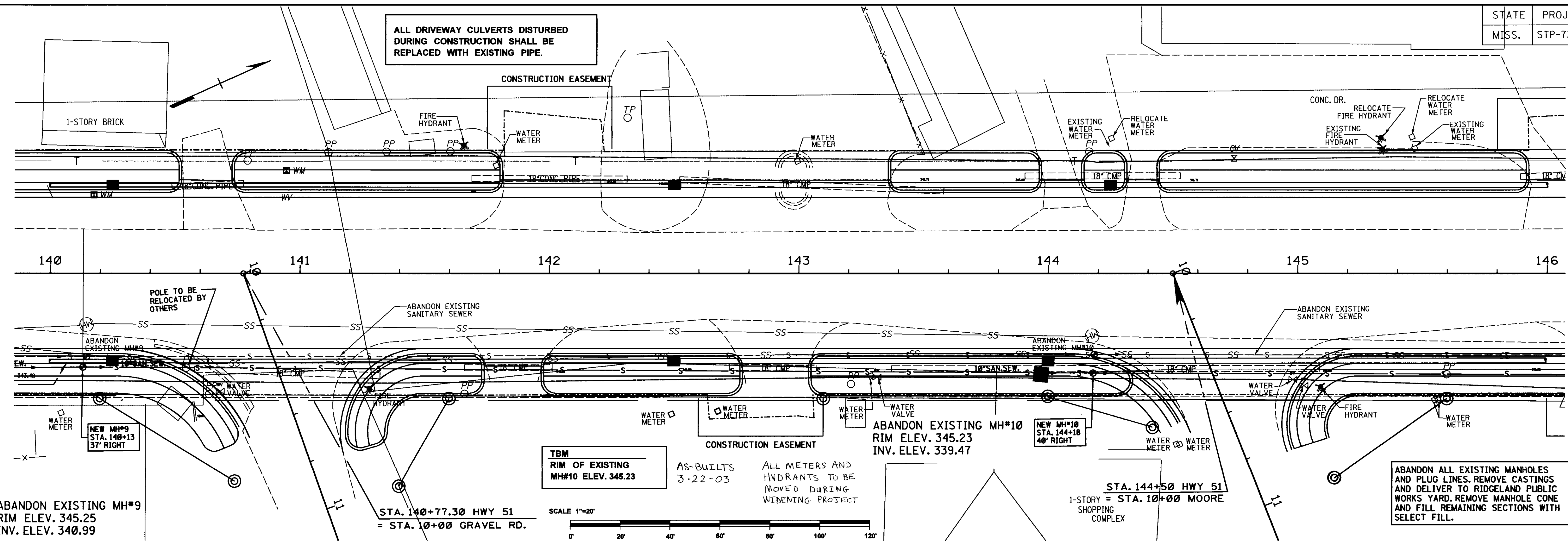
ABANDON ALL EXISTING MANHOLES AND PLUG LINES. REMOVE CASTINGS AND DELIVER TO RIDGELAND PUBLIC WORKS YARD. REMOVE MANHOLE CONE AND FILL REMAINING SECTIONS WITH SAND.



Station	Line Description	Top Elevation	Invert Elevation
365	MH-A	346.84	339.06
365	MH-B	351.12	340.4
365	MH-C	347.78	342.26
365	MH-D	347.78	342.26
365	MH-E	349.78	342.26
365	MH-F	343.83	343.83
365	MH-G	350.24	343.83

Manhole	RIM ELEV.	INV. ELEV.
MH#1	350.24	343.83
MH#3	349.30	345.88
MH#4	349.26	343.09
MH#5	349.18	338.39
MH#6	346.74	336.39

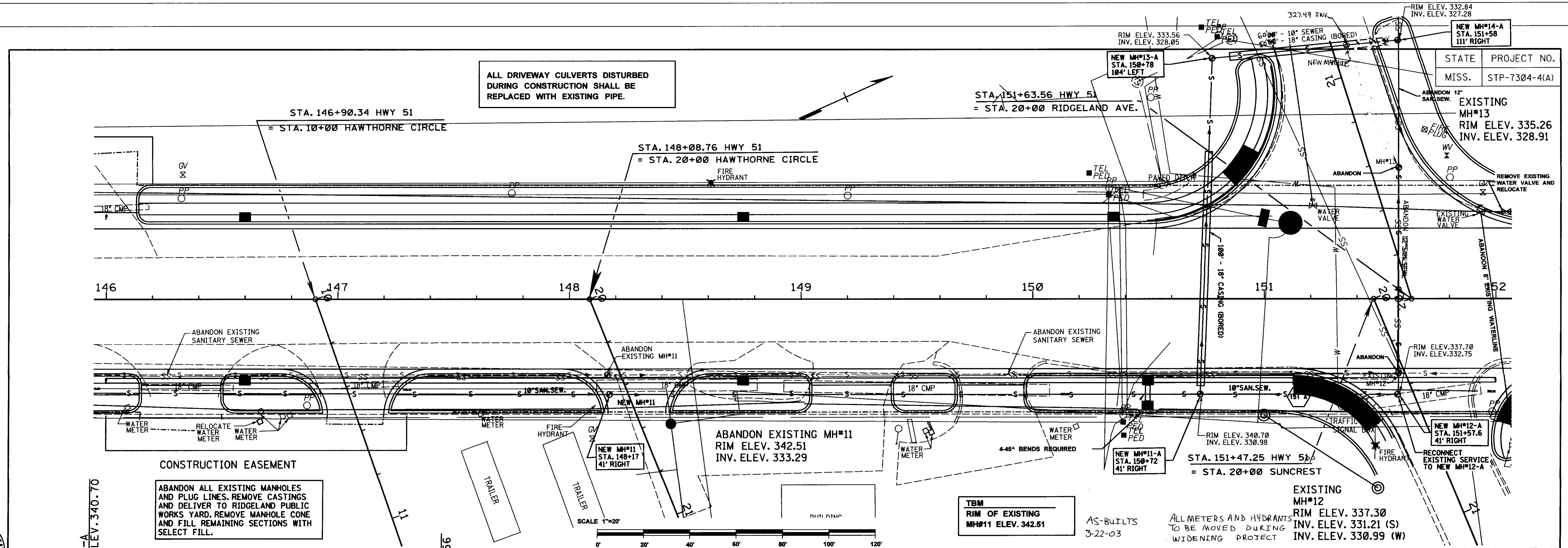
ALL DRIVEWAY CULVERTS DISTURBED DURING CONSTRUCTION SHALL BE REPLACED WITH EXISTING PIPE.





STATE	PROJECT NO.
MISS.	STP-7304-4(A)

ALL DRIVEWAY CULVERTS DISTURBED DURING CONSTRUCTION SHALL BE REPLACED WITH EXISTING PIPE.



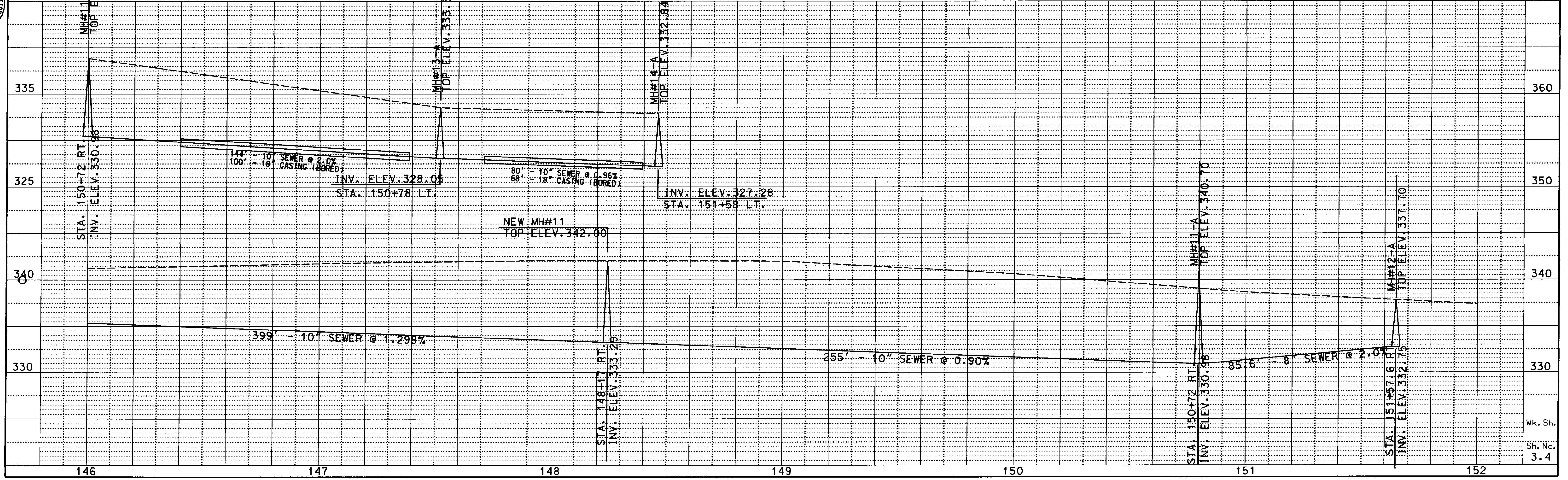
CONSTRUCTION EASEMENT

ABANDON ALL EXISTING MANHOLES AND PLUG LINES. REMOVE CASTINGS AND DELIVER TO RIDGELAND PUBLIC WORKS YARD. REMOVE MANHOLE CONE AND FILL REMAINING SECTIONS WITH SELECT FILL.

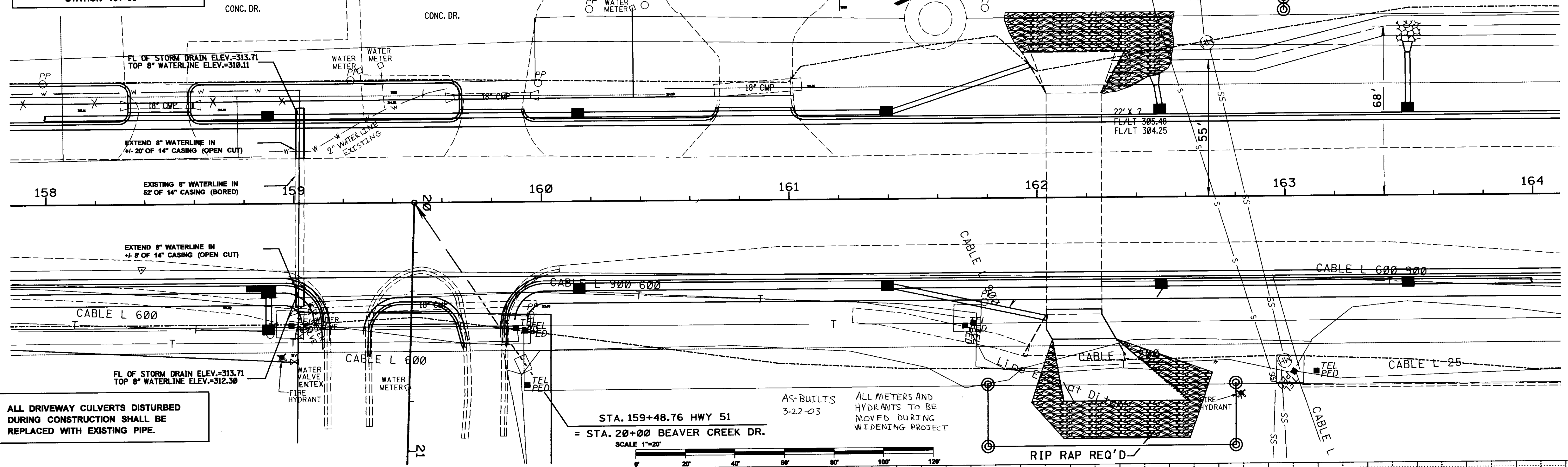
TBM
RIM OF EXISTING
MH#11 ELEV. 342.51

AS-BUILTS
3-22-03

ALL METERS AND HYDRANTS TO BE MOVED DURING WIDENING PROJECT



LOWER EXISTING 8" WATER LINE
TO APPROX. 6' DEEP
FROM STATION 152+00 TO
STATION 161+00



ALL DRIVEWAY CULVERTS DISTURBED
DURING CONSTRUCTION SHALL BE
REPLACED WITH EXISTING PIPE.

STA. 159+48.76 HWY 51
= STA. 20+00 BEAVER CREEK DR.

AS-BUILTS
3-22-03
ALL METERS AND
HYDRANTS TO BE
MOVED DURING
WIDENING PROJECT

