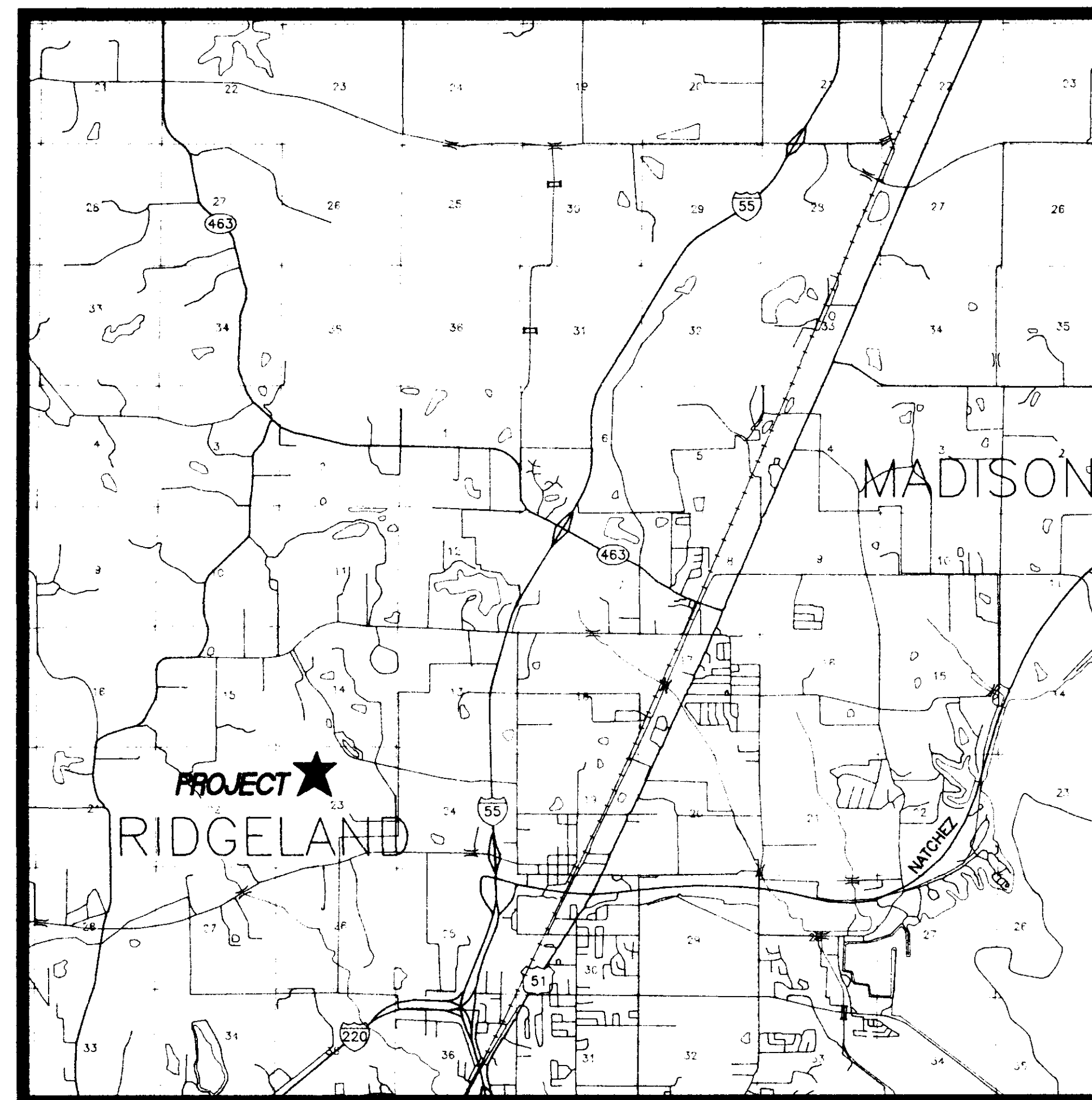


SANITARY SEWER IMPROVEMENTS  
FOR  
THE HILLVIEW SUBDIVISION  
CITY OF RIDGELAND, MISSISSIPPI  
OCTOBER 1996

MAYOR  
GENE F. MCGEE

ALDERMAN  
HARVEY CAR  
DARYL SMITH  
KATHI IRONS  
AL BIBLE  
JOE BARLOW  
LINDA TRUNZLER

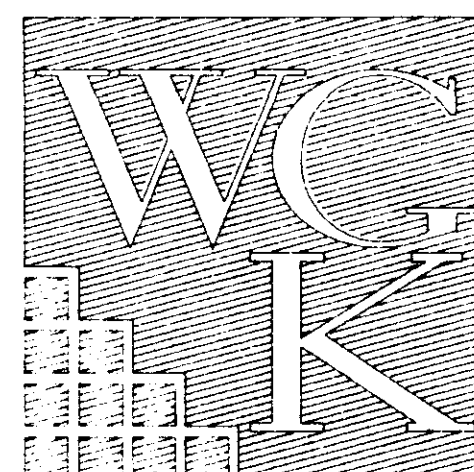


VICINITY MAP

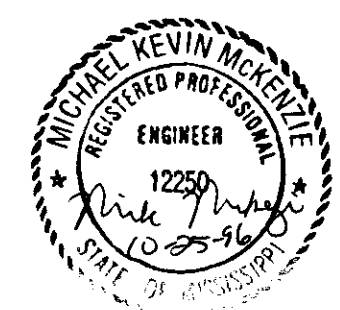
CITY CLERK  
MICHAEL MCPHEARSON

CITY ATTORNEY  
~~JAMES STREETMAN~~  
*Jimmy Mills*  
PUBLIC WORKS DIRECTOR  
SAM VINSON

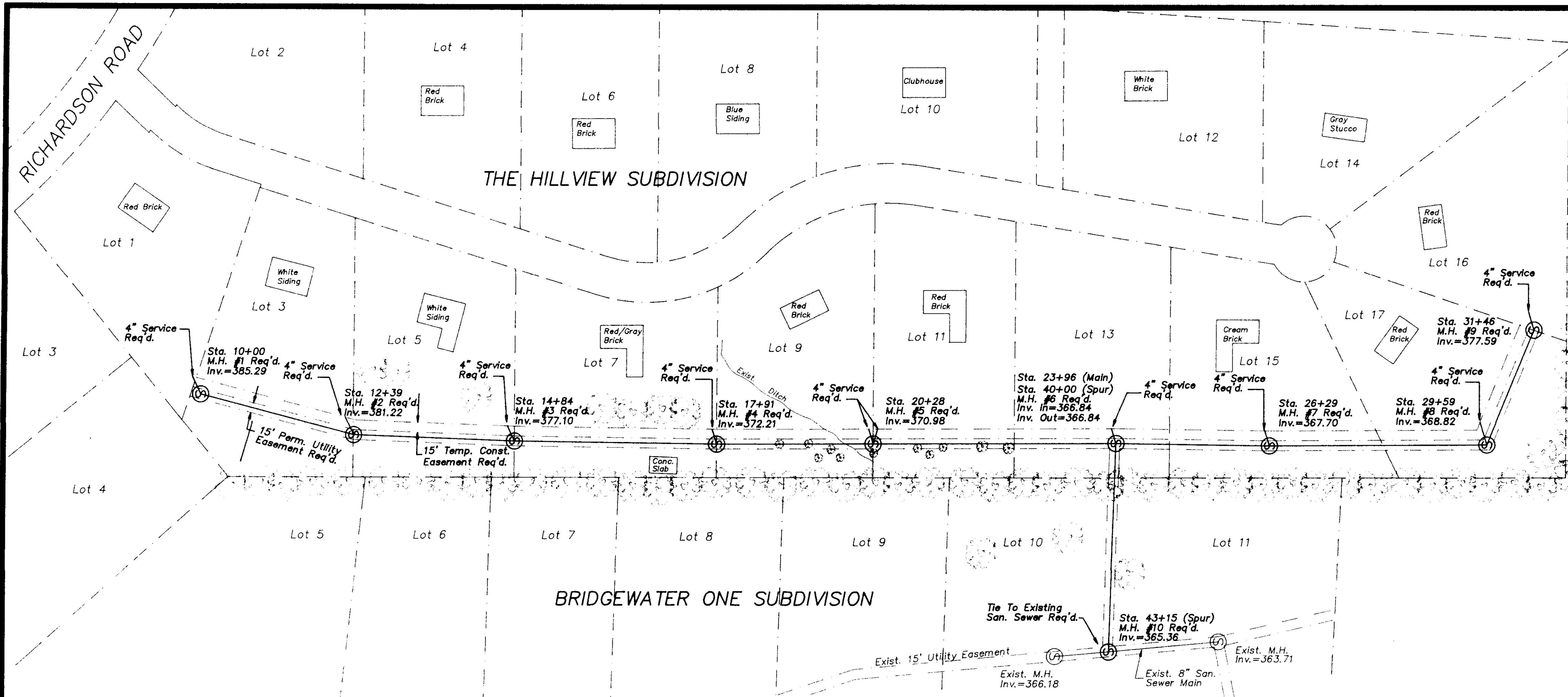
**DRAFT**



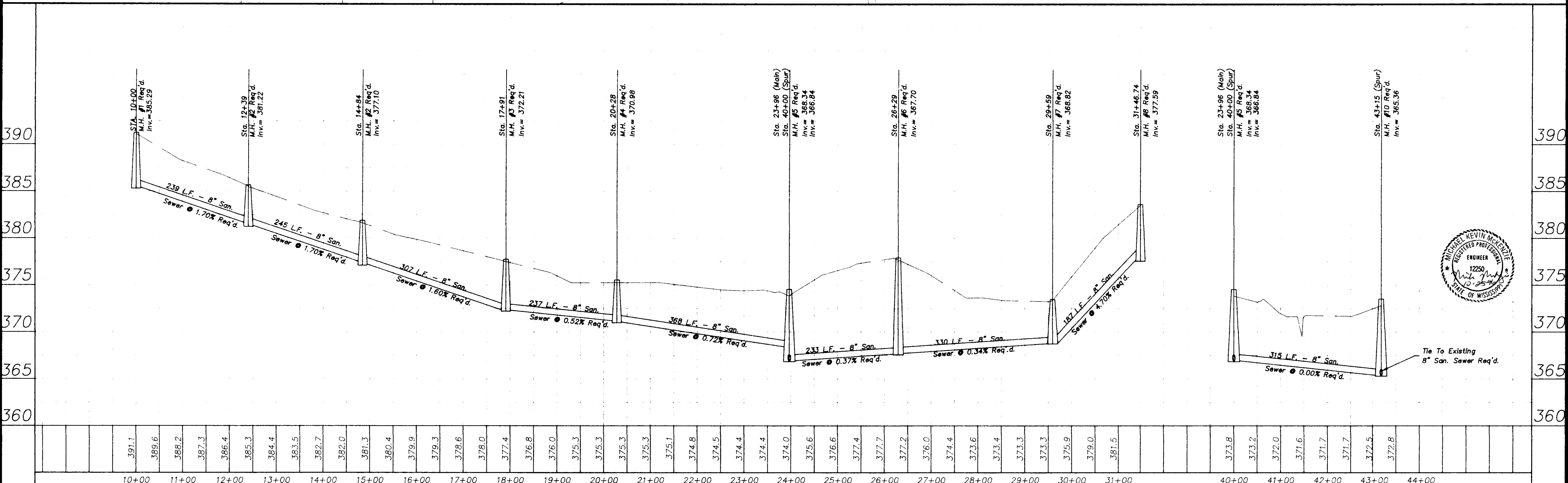
WILLIFORD, GEARHART & KNIGHT, INC.  
ENGINEERS & SURVEYORS  
CANTON, MISSISSIPPI

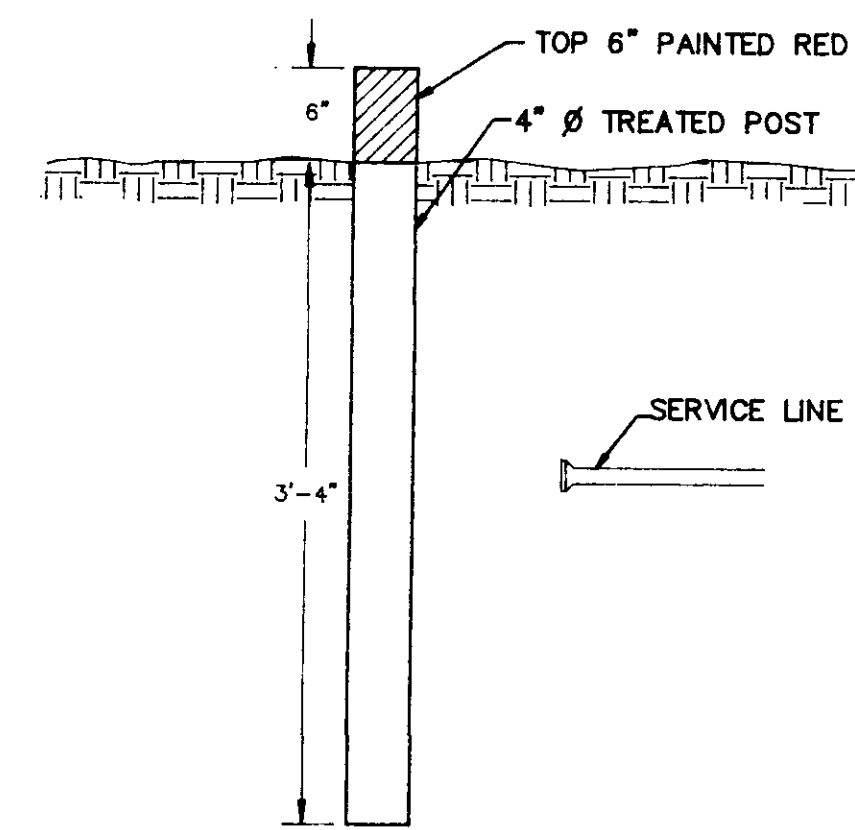


PWP-00826

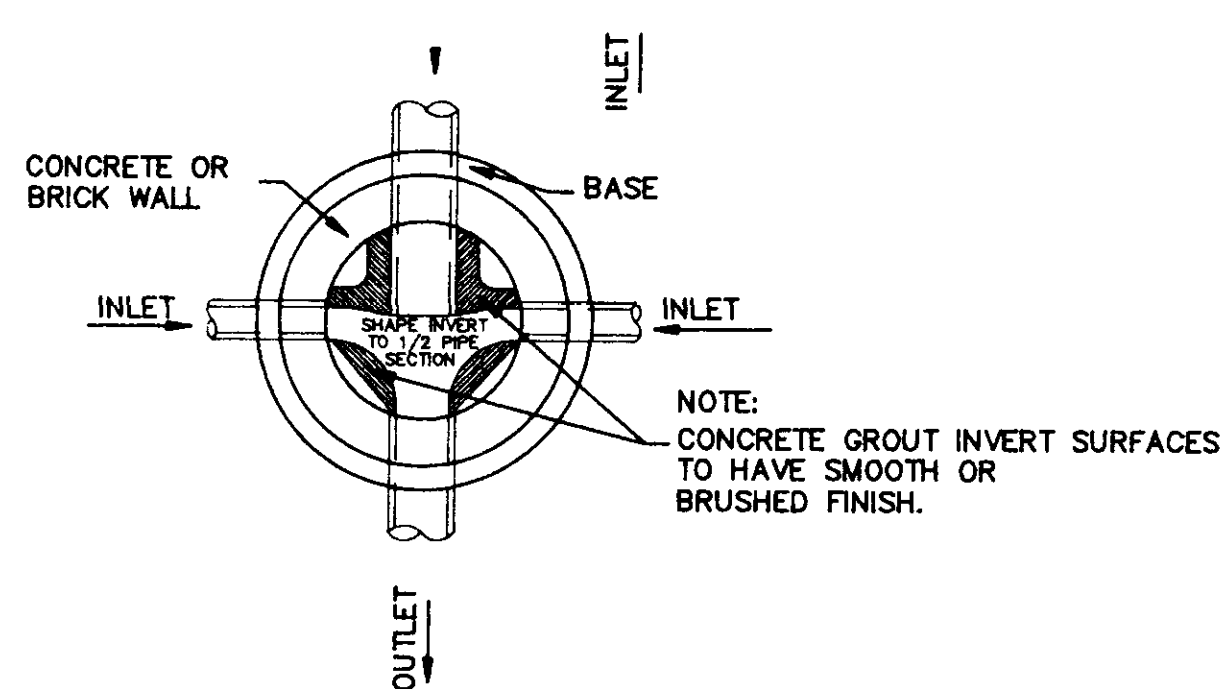


- NOTE:
1. ALL SEWER MAINS THIS PROJECT TO BE 8" P.V.C., SDR 26.
  2. ALL CONSTRUCTION SHALL COMPLY WITH THE LATEST ORDINANCES AND SUBDIVISION REGULATIONS OF THE CITY OF RIDGELAND, MISSISSIPPI, AS WELL AS THE LATEST REGULATIONS OF THE MISSISSIPPI DEPARTMENT OF ENVIRONMENTAL QUALITY.
  3. ACTUAL LOCATION OF SERVICE CONNECTIONS WILL BE DETERMINED DURING CONSTRUCTION.

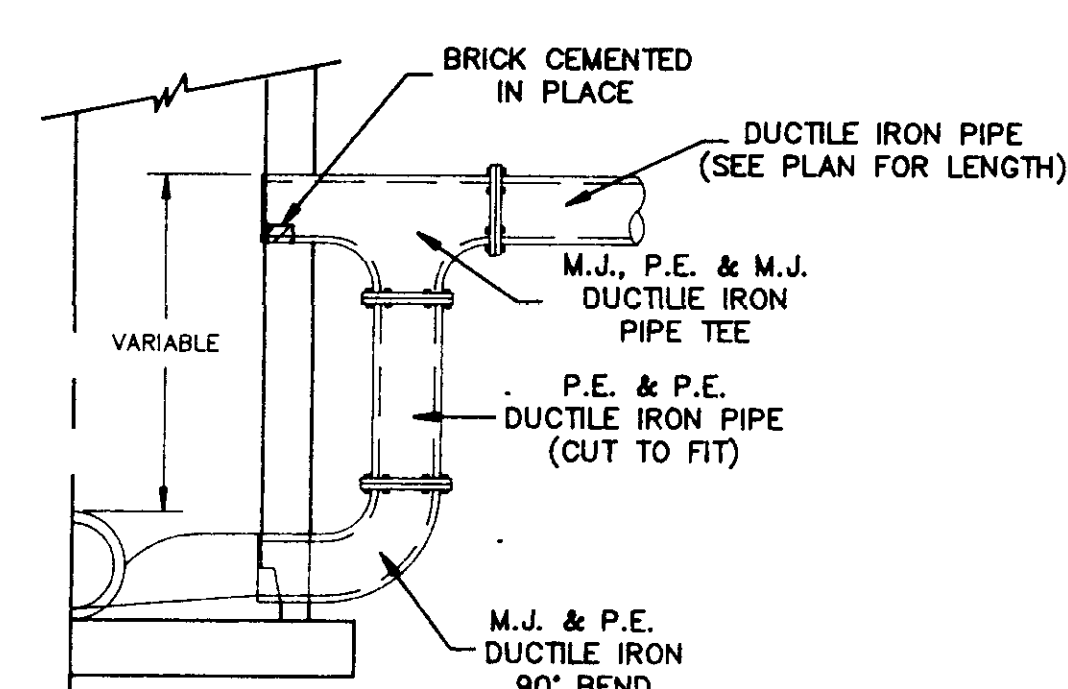




SEWER SERVICE MARKER

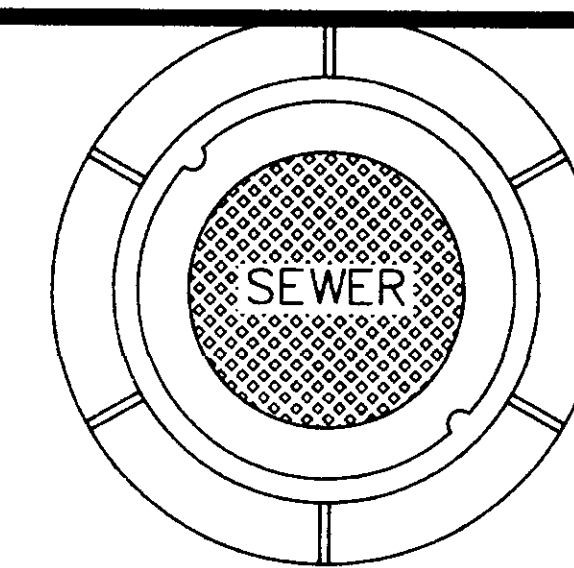


PLAN OF MANHOLE FLOW CHANNELS

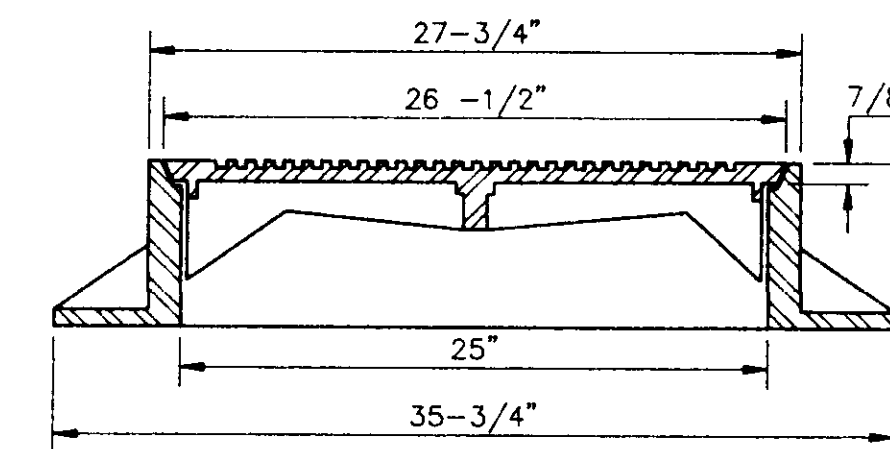


HALF SECTION

MANHOLE WITH DROP CONNECTION

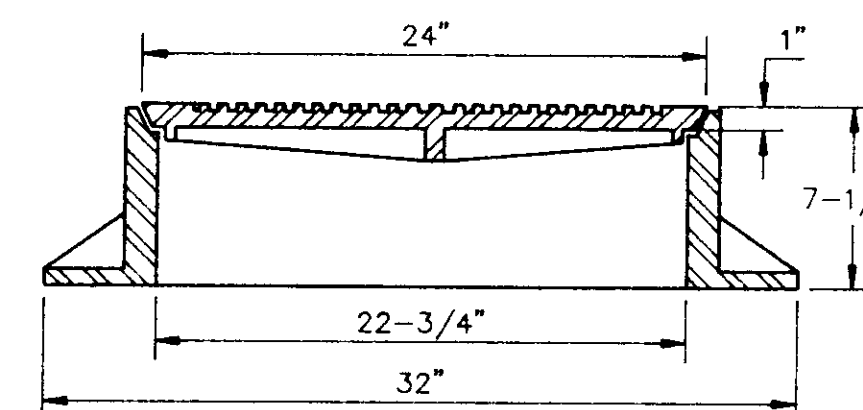


PLAN MANHOLE CASTING



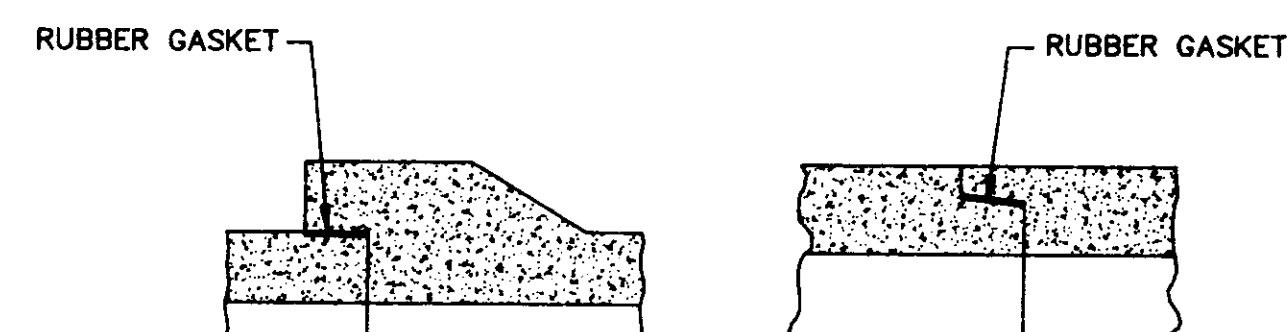
SECTION TYPE "A" MANHOLE CASTING

NOTE:  
1) USE TYPE "A" MANHOLE CASTING IN STREET R.O.W.  
2) USE HARPER NO. 2, CITY OF JACKSON STANDARD (420 LBS) OR VULCAN NO. VM-15 CITY OF JACKSON STANDARDS (420 LBS)



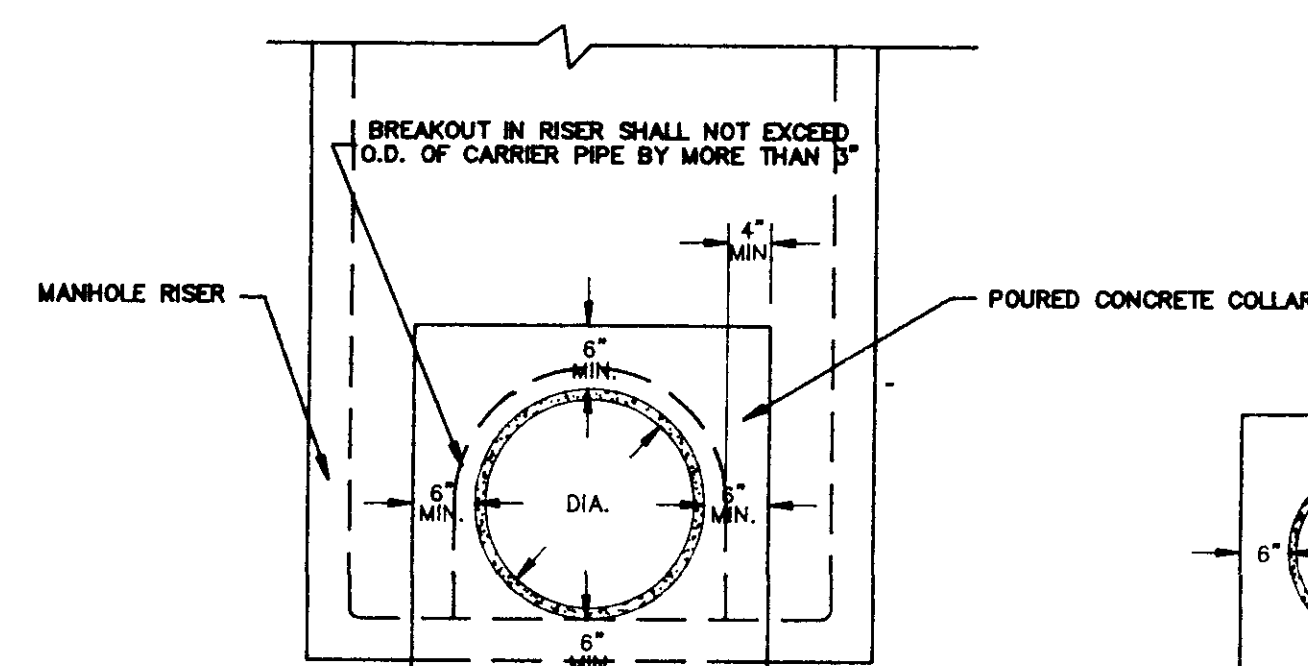
SECTION TYPE "B" MANHOLE CASTING

NOTE:  
1) USE TYPE "B" MANHOLE CASTING FOR ANY MANHOLE NOT IN STREET R.O.W.  
2) USE HARPER NO. 1 (M.S.P.E. STANDARD) LIGHT WEIGHT (330 LBS), VULCAN NO. VM-17 (300 LBS) OR OPELIKA FOUNDRY NO. C-2-1 (325 LBS)

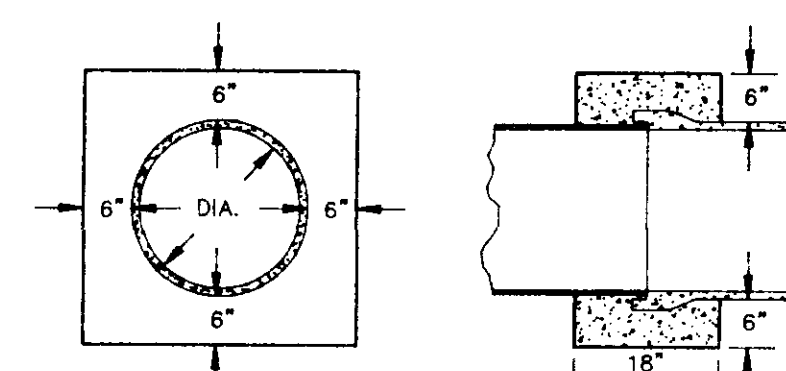


BELL & SPIGOT TONGUE & GROOVE

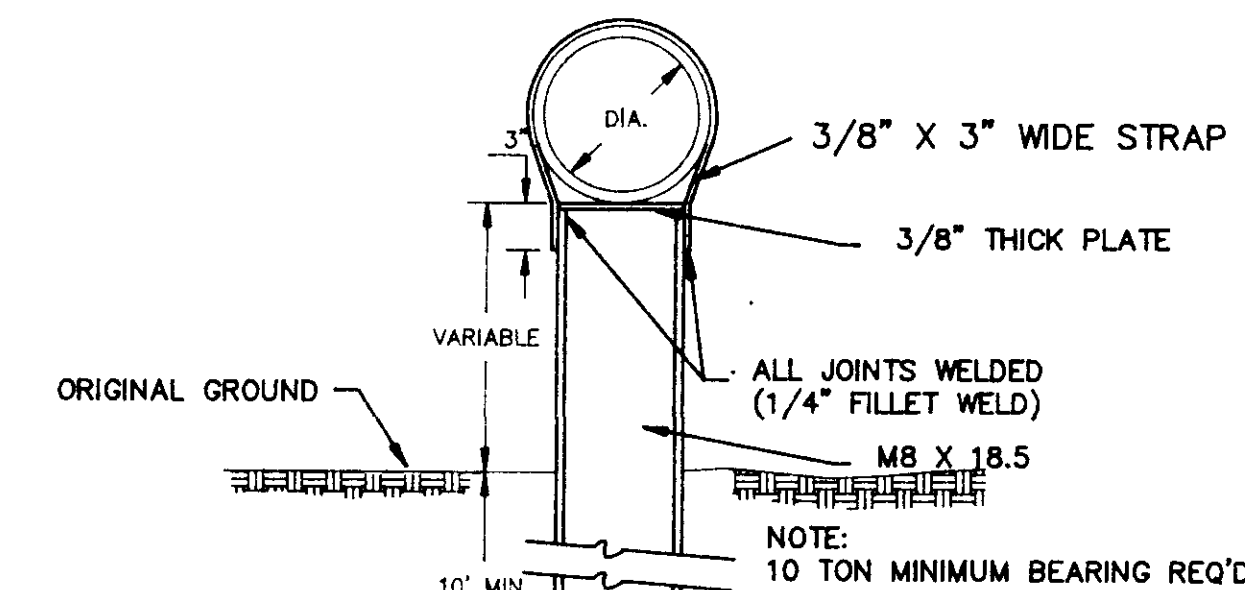
JOINT DETAILS



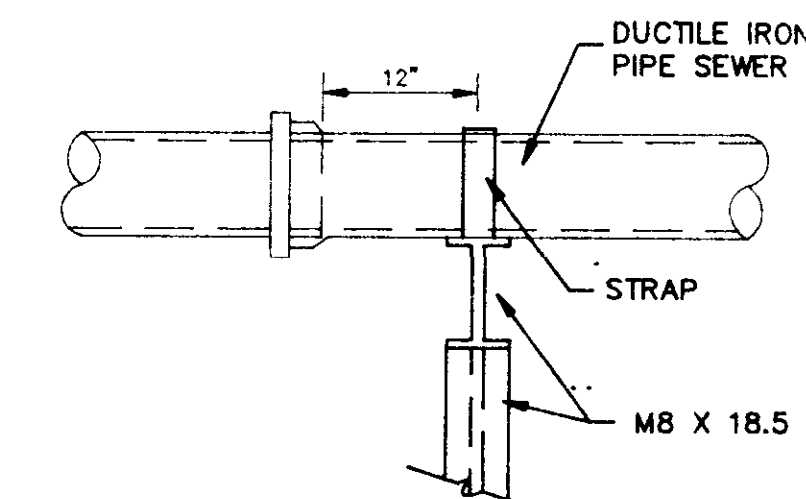
ELEVATION CONCRETE COLLAR AT MANHOLE CONNECTION



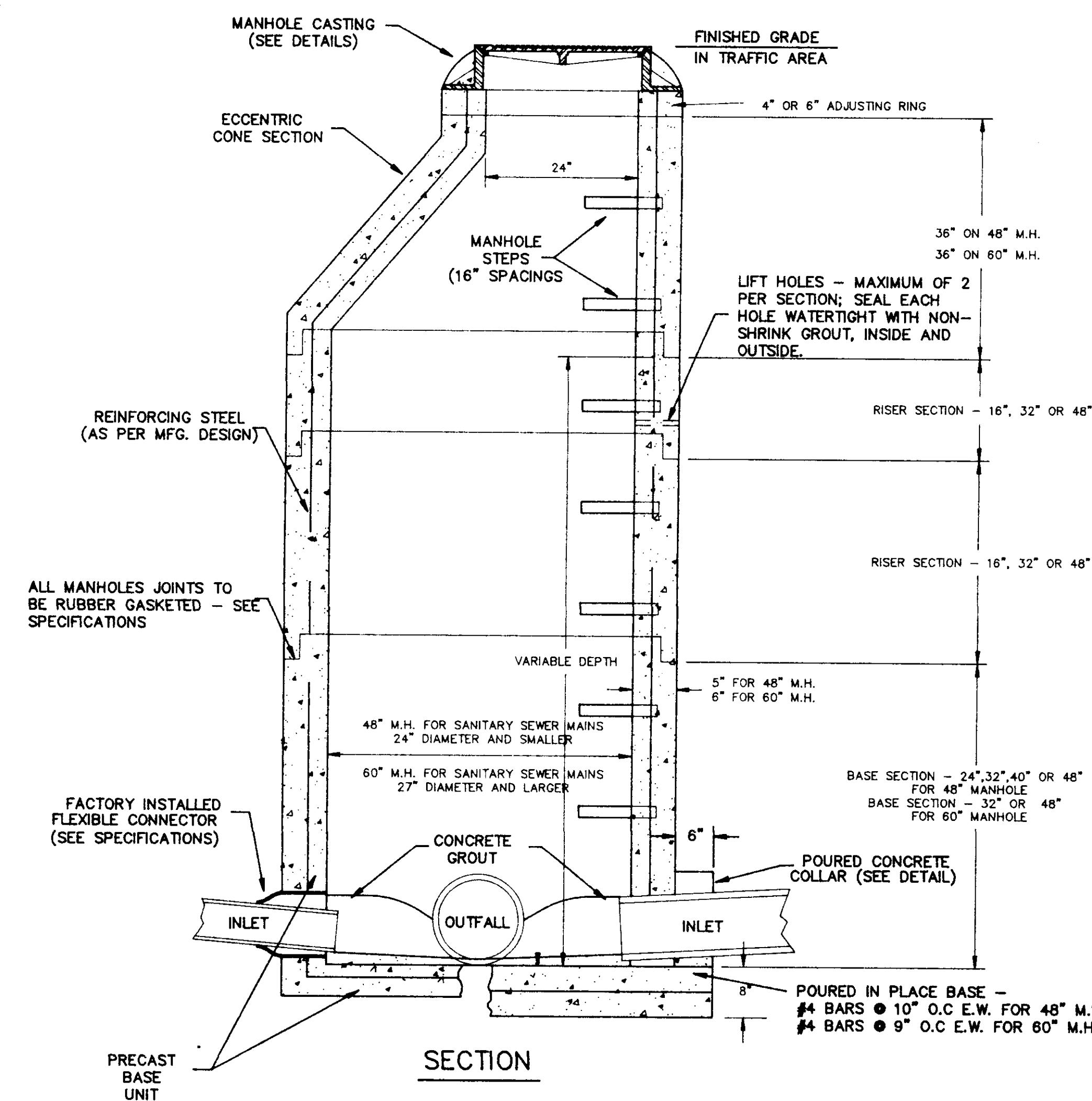
ELEVATION SECTION CONCRETE COLLAR DETAILS



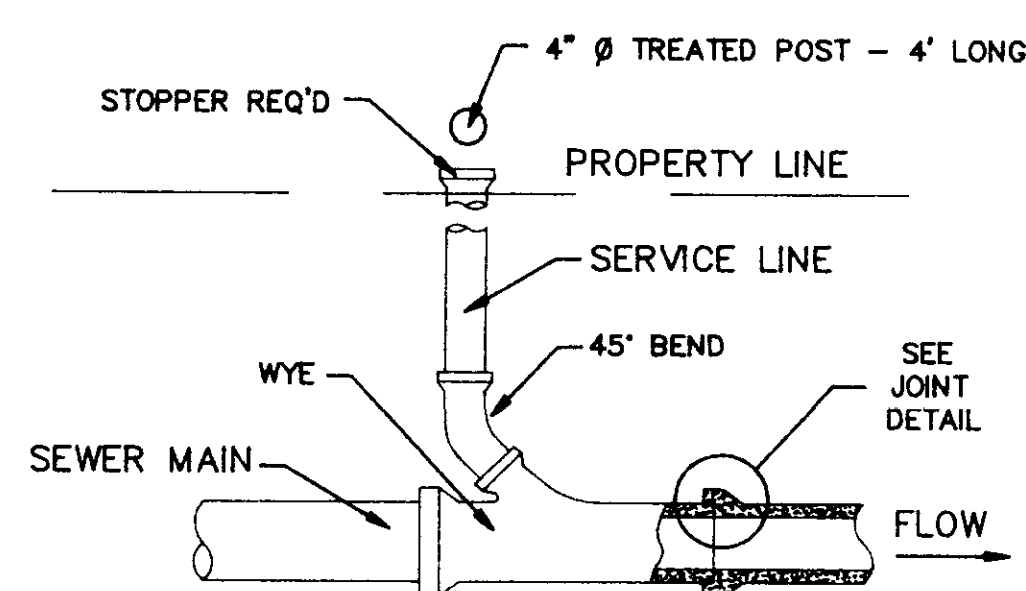
DETAIL TYPE "A" PIER



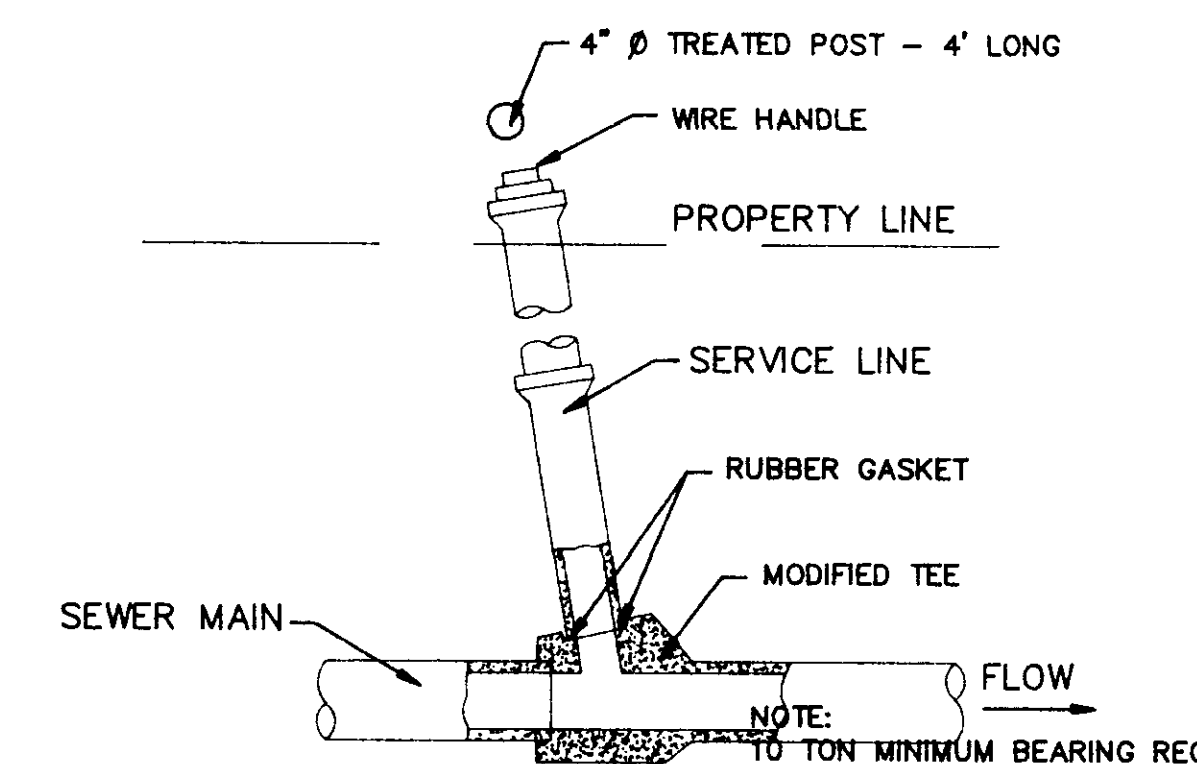
SIDE ELEVATION TYPE "B" PIER



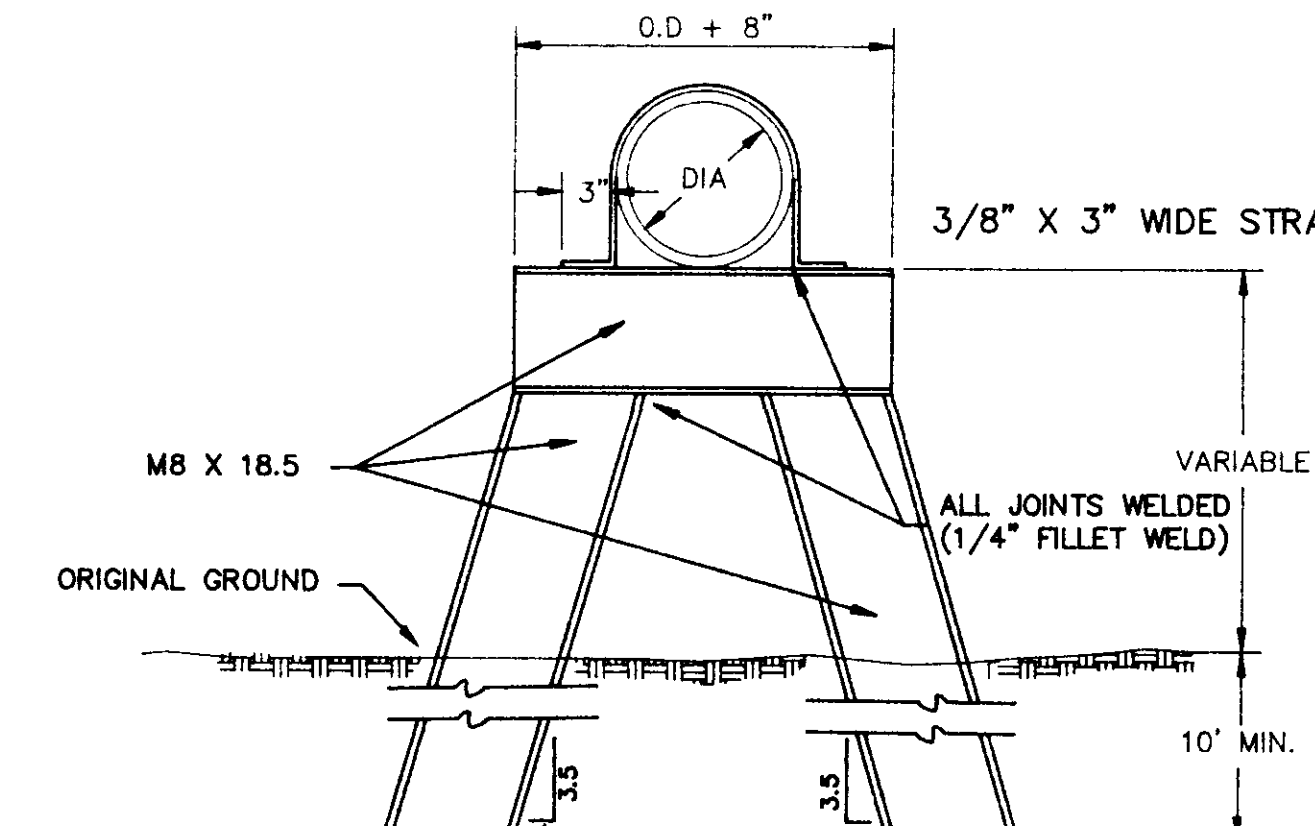
SECTION PRECAST CONCRETE MANHOLE



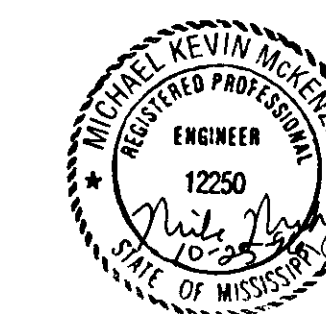
TYPICAL SERVICE TO PROPERTY LINE WITH WYE JOINT



TYPICAL SERVICE TO PROPERTY LINE WITH MODIFIED TEE



DETAIL TYPE "B" PIER



NO.	DATE	REVISIONS

DESIGNED BY MKM	DATE 10-15-96	
DRAWN BY MKM	APPROVED BY CHW	
REVIEWED BY CHW	SCALE NTS	WILLFORD, GEARHART & KNIGHT, INC. ENGINEERS & SURVEYORS

P.O. Box 318 400 Monroe Street Clinton, Mississippi 39060 601.925.4444 FAX 601.924.6708	P.O. Box 1014 169 West Peace Street Canton, Mississippi 39046 601.859.3600 FAX 601.859.7307	P.O. Box 387 345 West Gallatin Street Hazelhurst, Mississippi 39083 601.894.2000 FAX 601.894.1824
---	---	---

THE HILLVIEW SUBMISION  
PROPOSED SANITARY SEWER IMPROVEMENTS  
TYPICAL DETAILS

ADCADD\96-286\TYPDET.S(1)
WGM# - 96-286
SHEET NO.
3 OF 3