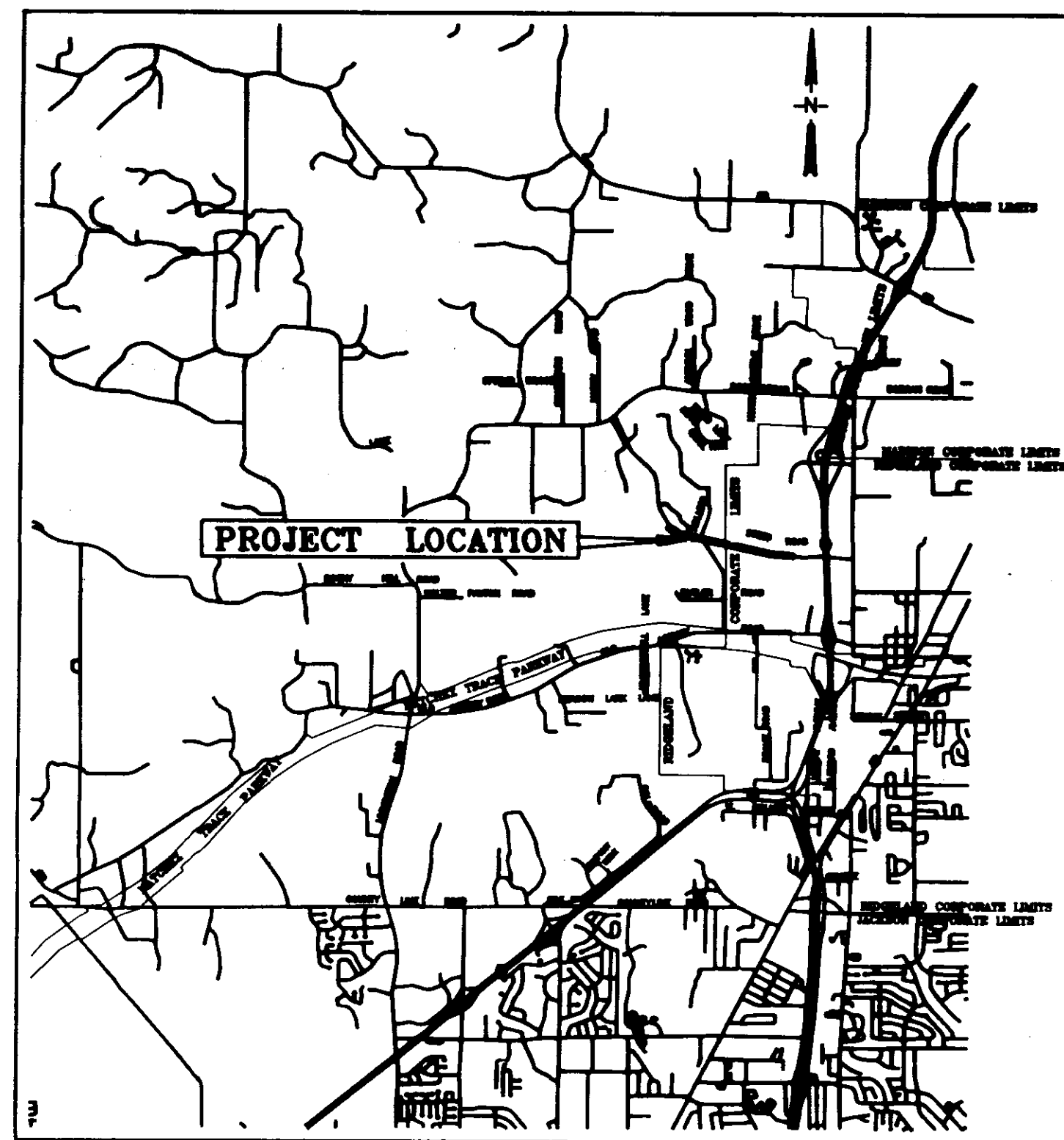


CITY OF RIDGELAND, MISSISSIPPI
HILLVIEW SUBDIVISION
12" WATER MAIN EXTENSION

Mayor:
Gene F. McGee
Mayor Pro Tem:
Harvey Carr, Jr.
City Attorney:
Jerry Mills

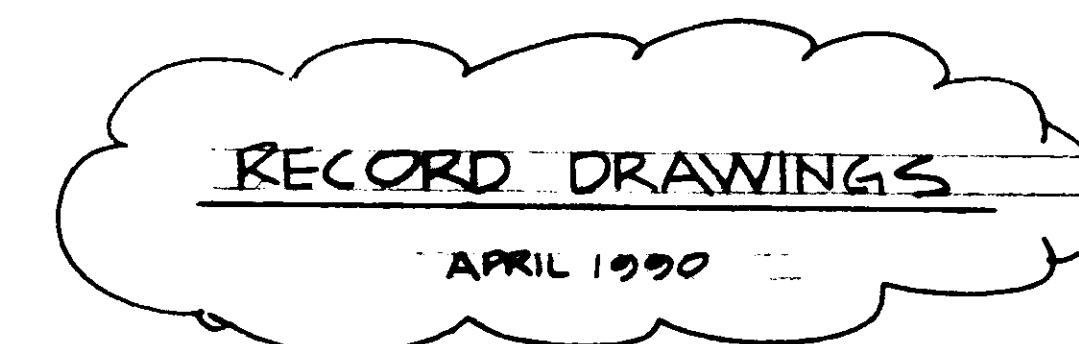


VICINITY MAP

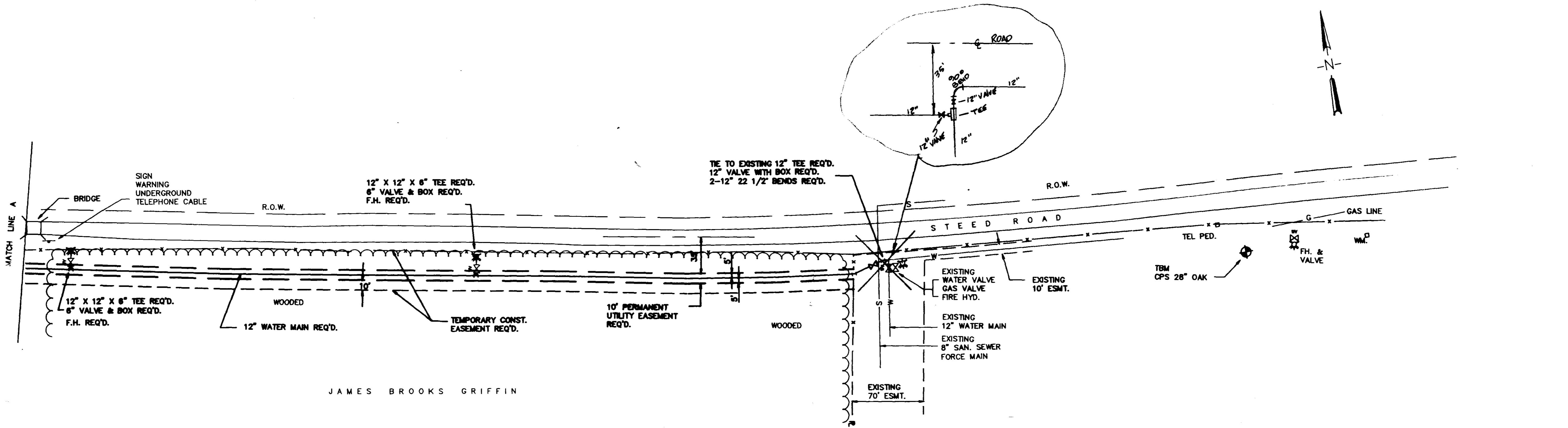
Aldermen:
Brian Barcellona
Al Bible
Harvey Carr, Jr.
Linda Davis
Daryl Smith
Acting Public Works Director:
Sid Hawthorne
Acting City Clerk:
Becky Dixon

November 1989

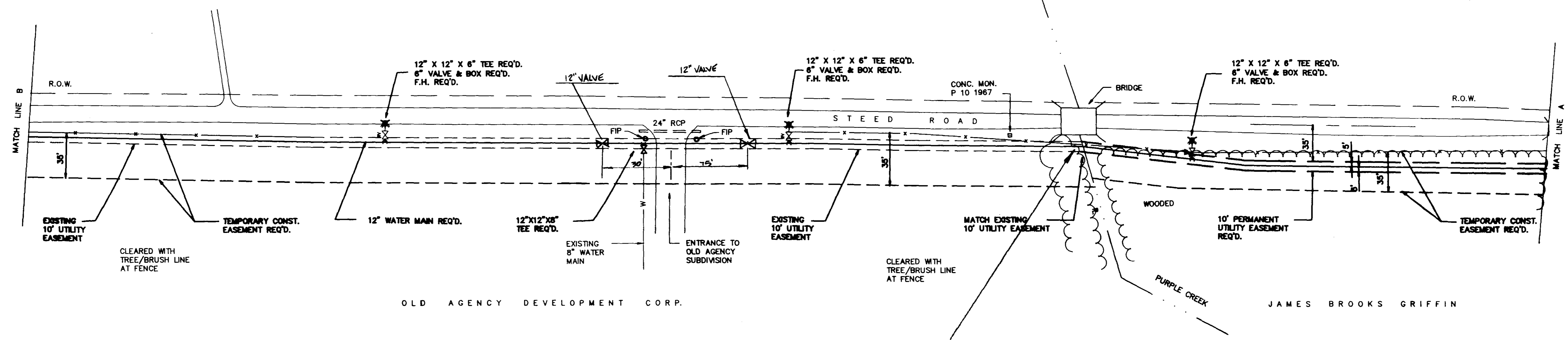
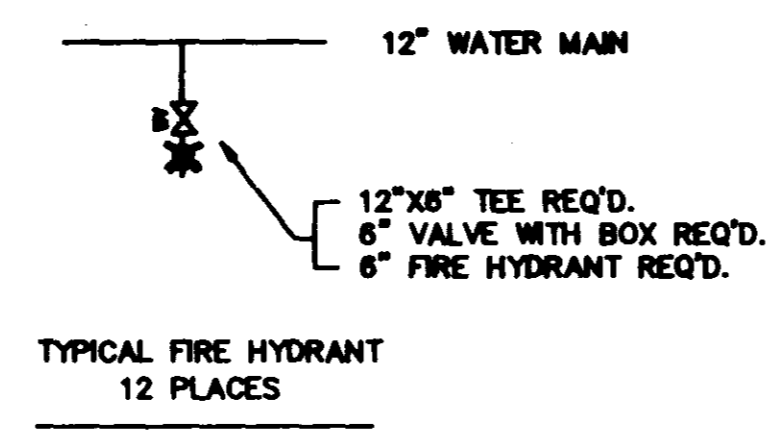
WAGGONER ENGINEERING, INC.
Consulting Engineers
Jackson, Mississippi



PWP-00810

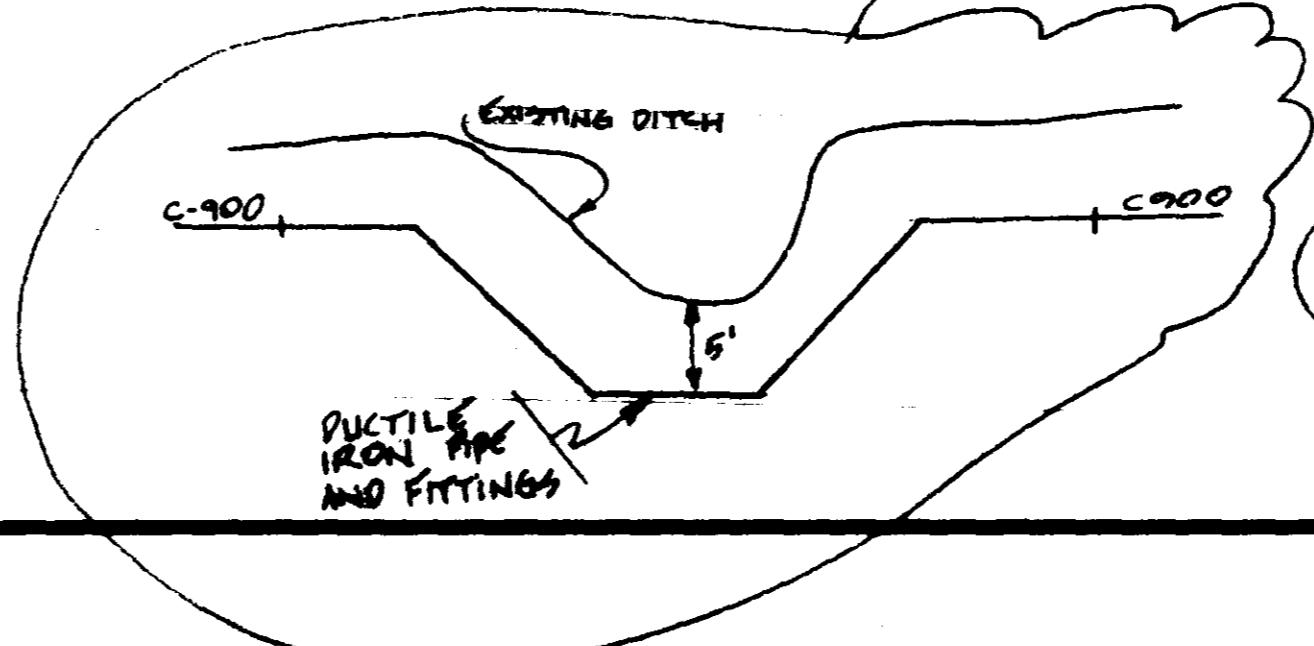


JAMES BROOKS GRIFFIN



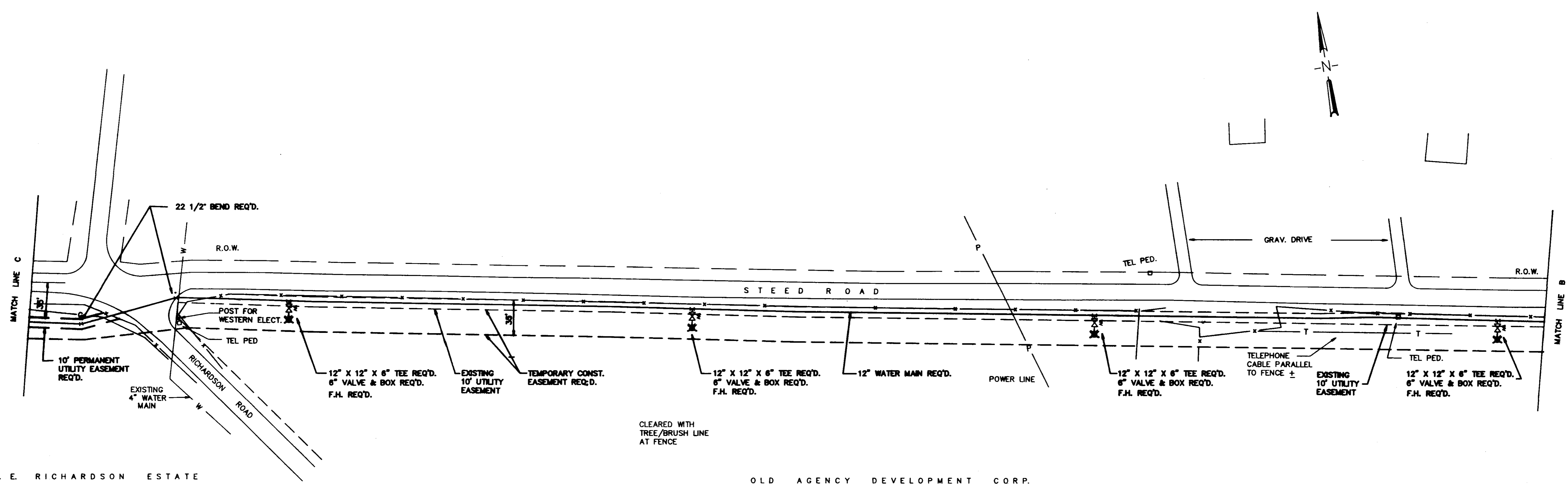
OLD AGENCY DEVELOPMENT CORP.

JAMES BROOKS GRIFFIN



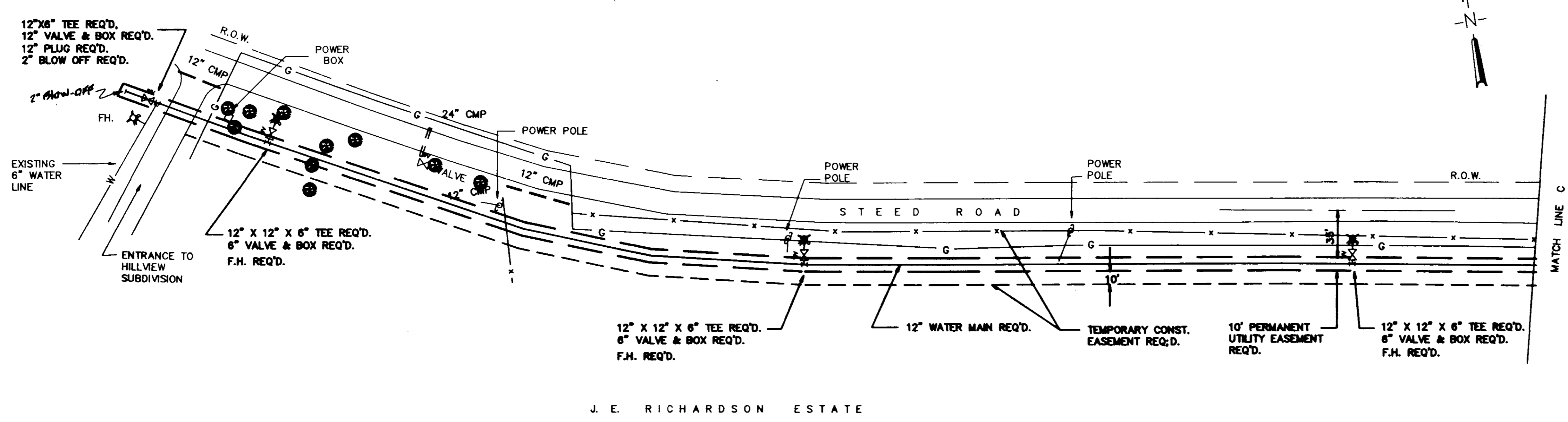
RECORD DRAWINGS
APRIL 1990

CITY OF RIDGELAND			
HILLVIEW SUBDIVISION			
12" WATER MAIN EXTENSION			
WAGGONER ENGINEERING, INC. Consulting Engineers - Jackson, Mississippi			
DRAWN BY: J.W.P.	DATE: 11-9-89	SHEET NUMBER	
DESIGNED BY:	SCALE: 1" = 50'	2 of 4	



J. E. RICHARDSON ESTATE

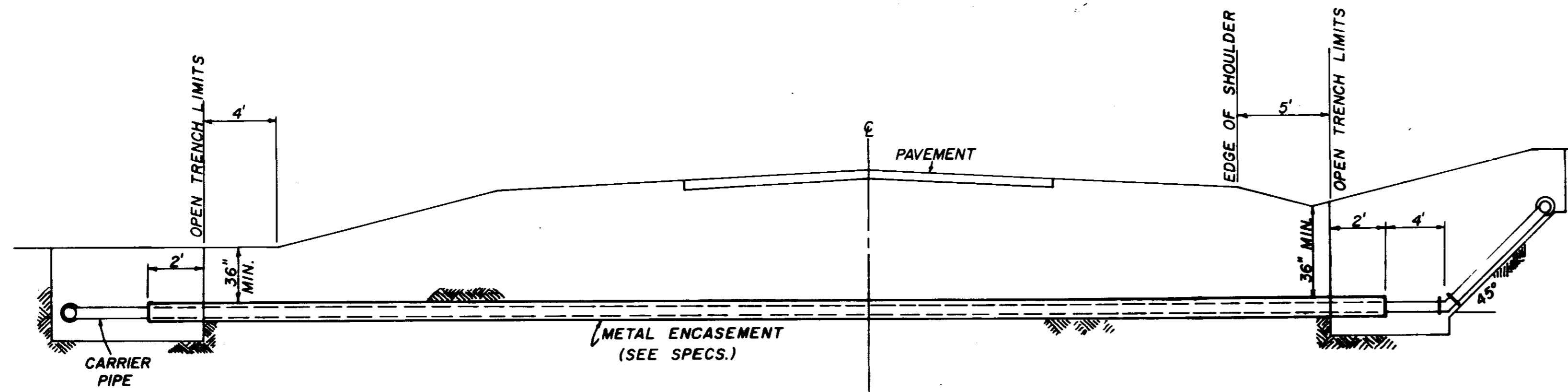
OLD AGENCY DEVELOPMENT CORP.



J. E. RICHARDSON ESTATE

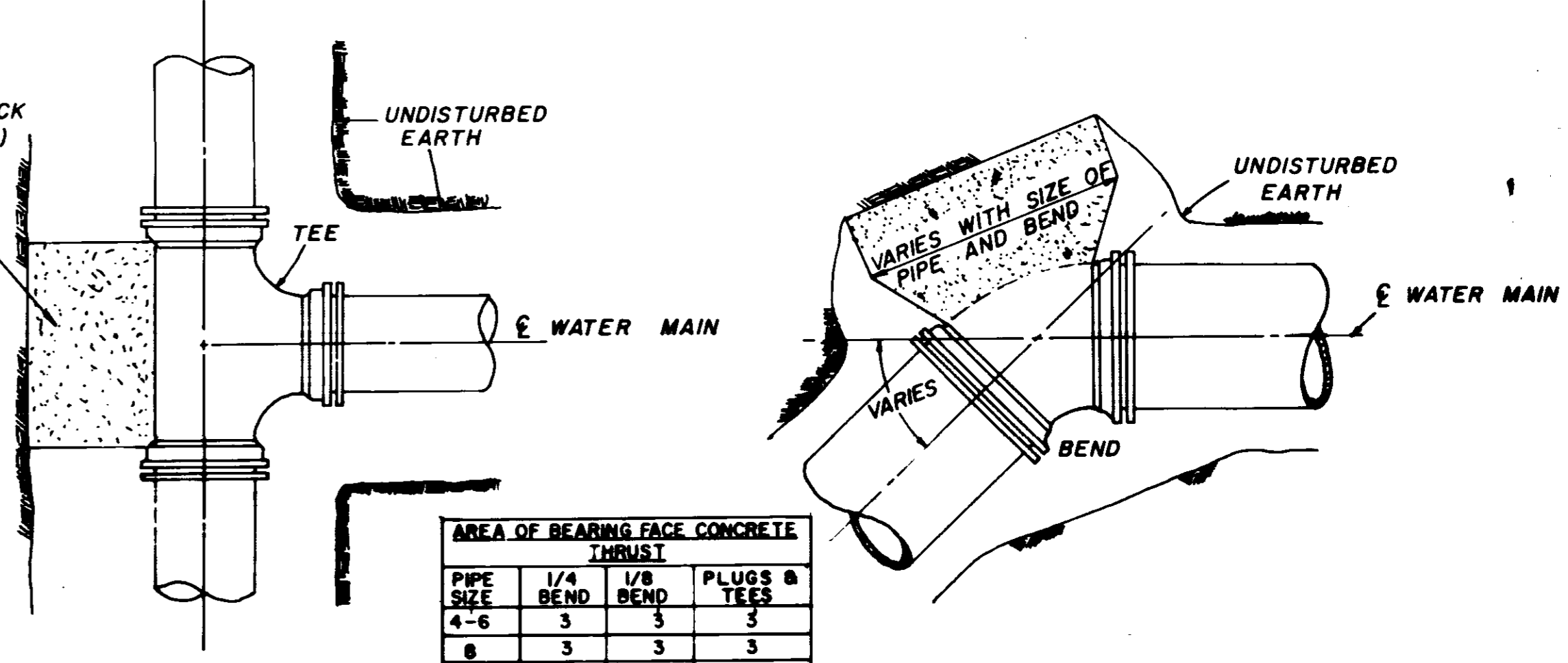
RECORD DRAWINGS
APRIL 1990

CITY OF RIDGELAND		
HILLVIEW SUBDIVISION		
12" WATER MAIN EXTENSION		
WAGGONER ENGINEERING, INC. Consulting Engineers - Jackson, Mississippi		
DESIGNED BY: J.W.P.	DATE: 11-9-88	SHEET NUMBER:
CHECKED BY:	SCALE: 1" = 50'	3 OF 4



TYPICAL CASED CROSSING

NOTE: COMPENSATION FOR CONCRETE THRUST BLOCKS SHALL BE INCLUDED IN THE UNIT PRICE BID FOR VALVES, FIRE HYDRANTS AND FITTINGS.

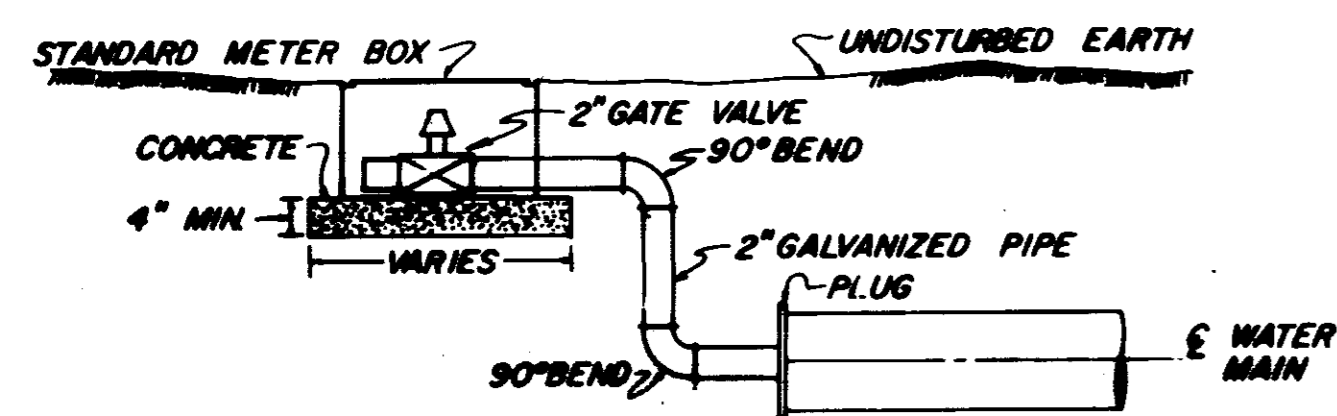


PLAN

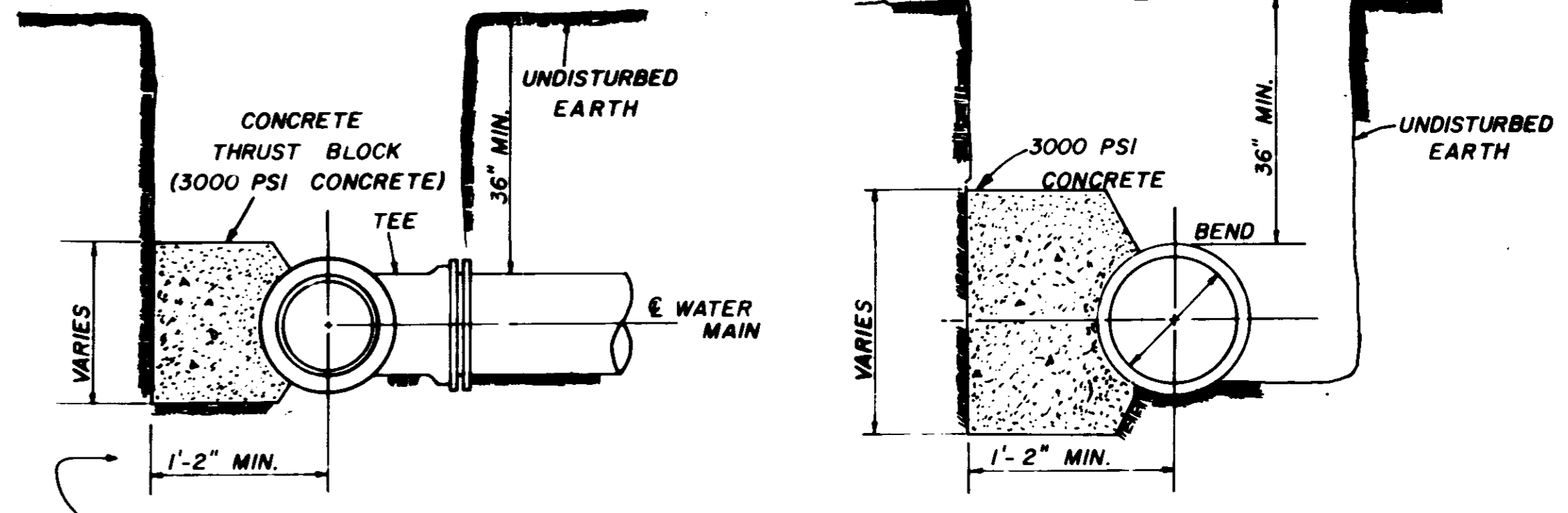
PLAN

PIPE SIZE	AREA OF BEARING FACE CONCRETE THRUST		PLUGS & TEES
	1/4 BEND	1/8 BEND	
4-6	3	3	3
8	3	3	3
10	4	3	3
12	6	3	4
16	11	4	7

NOTE: AREA OF BEARING FACE IN SQUARE FEET.



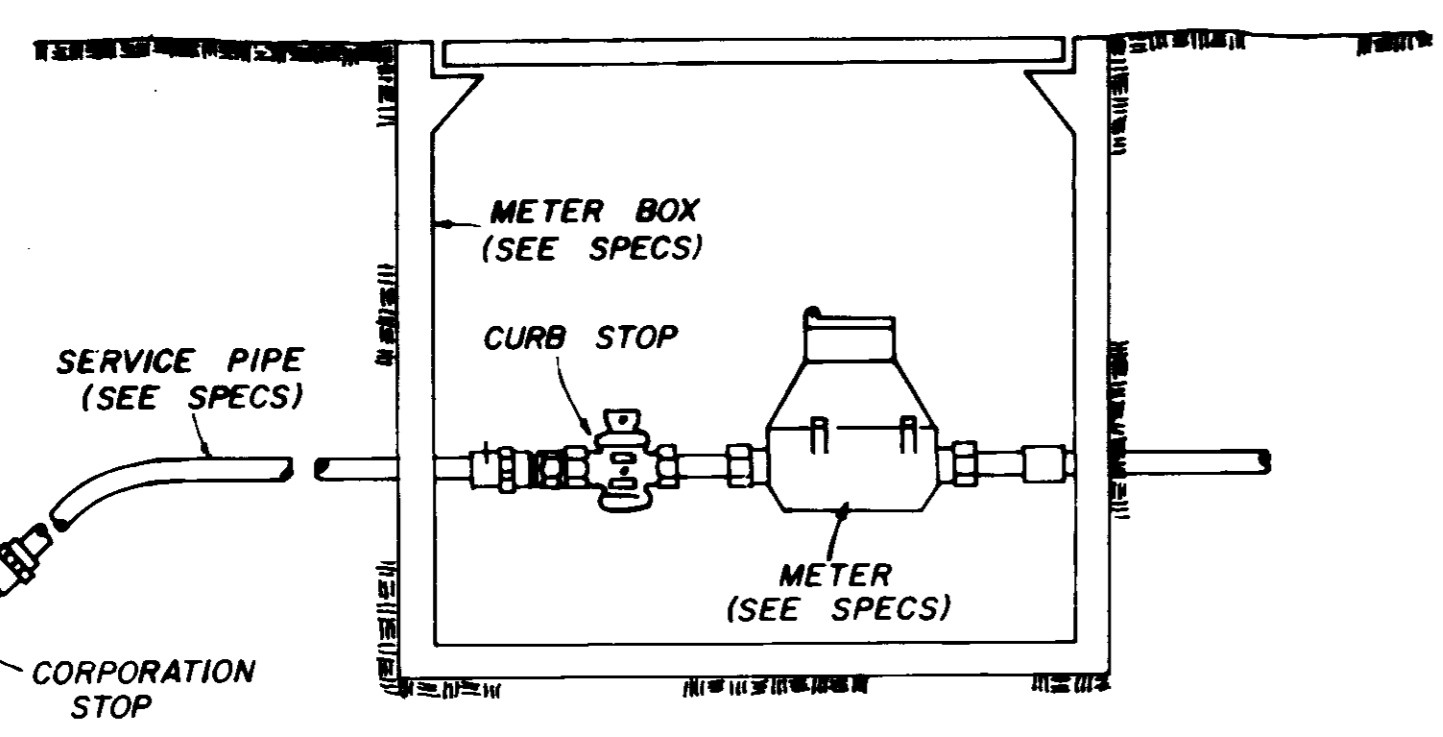
TYPICAL 2" BLOW-OFF DETAIL



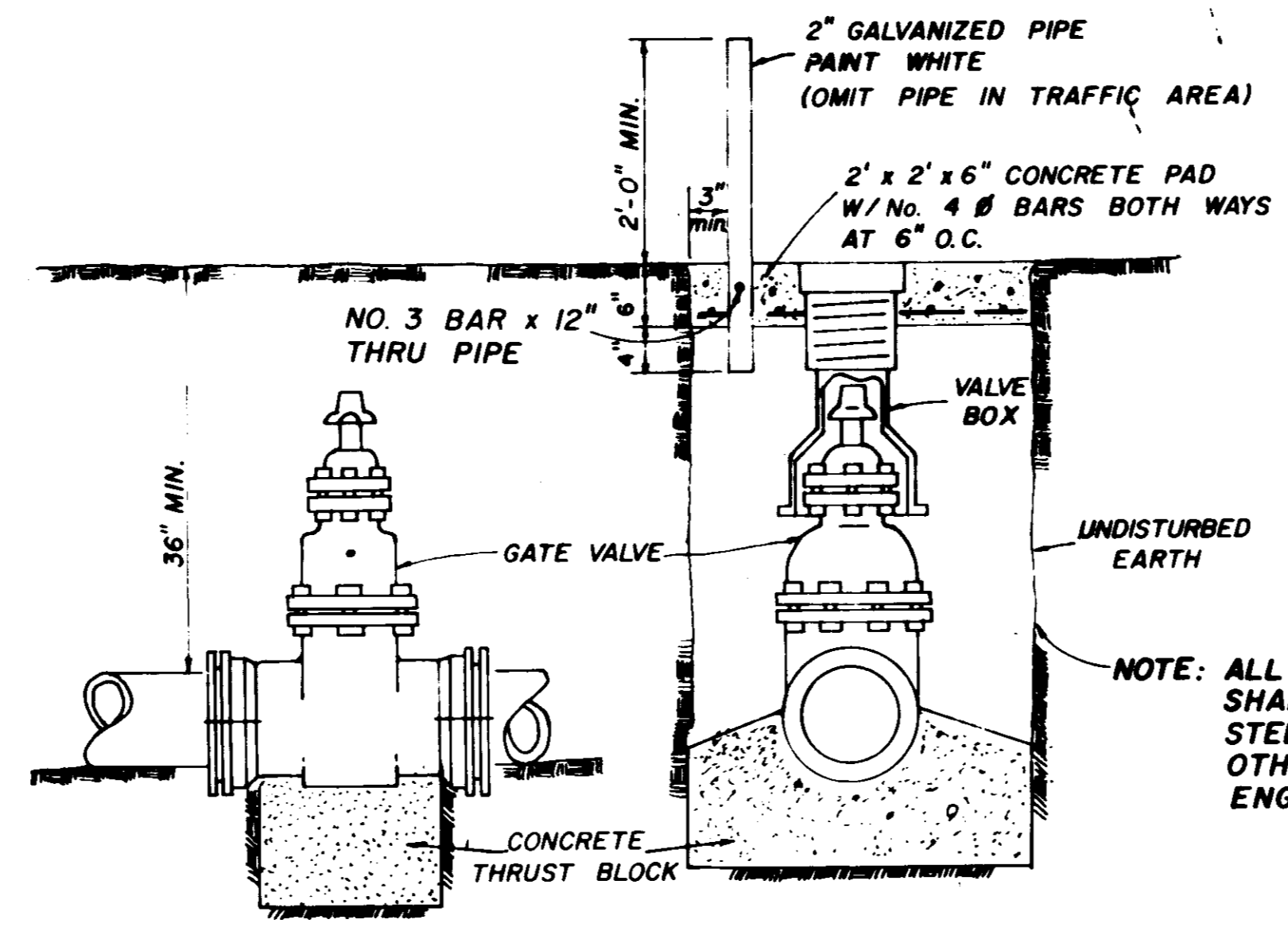
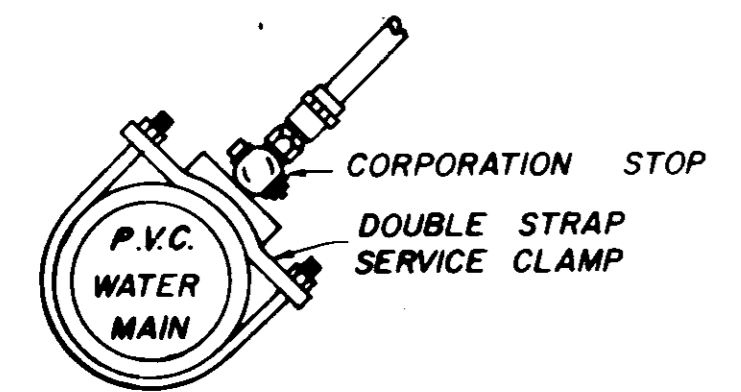
SECTION

SECTION

BLOCKING DETAILS FOR TEES & BENDS



TYPICAL SERVICE ASSEMBLY

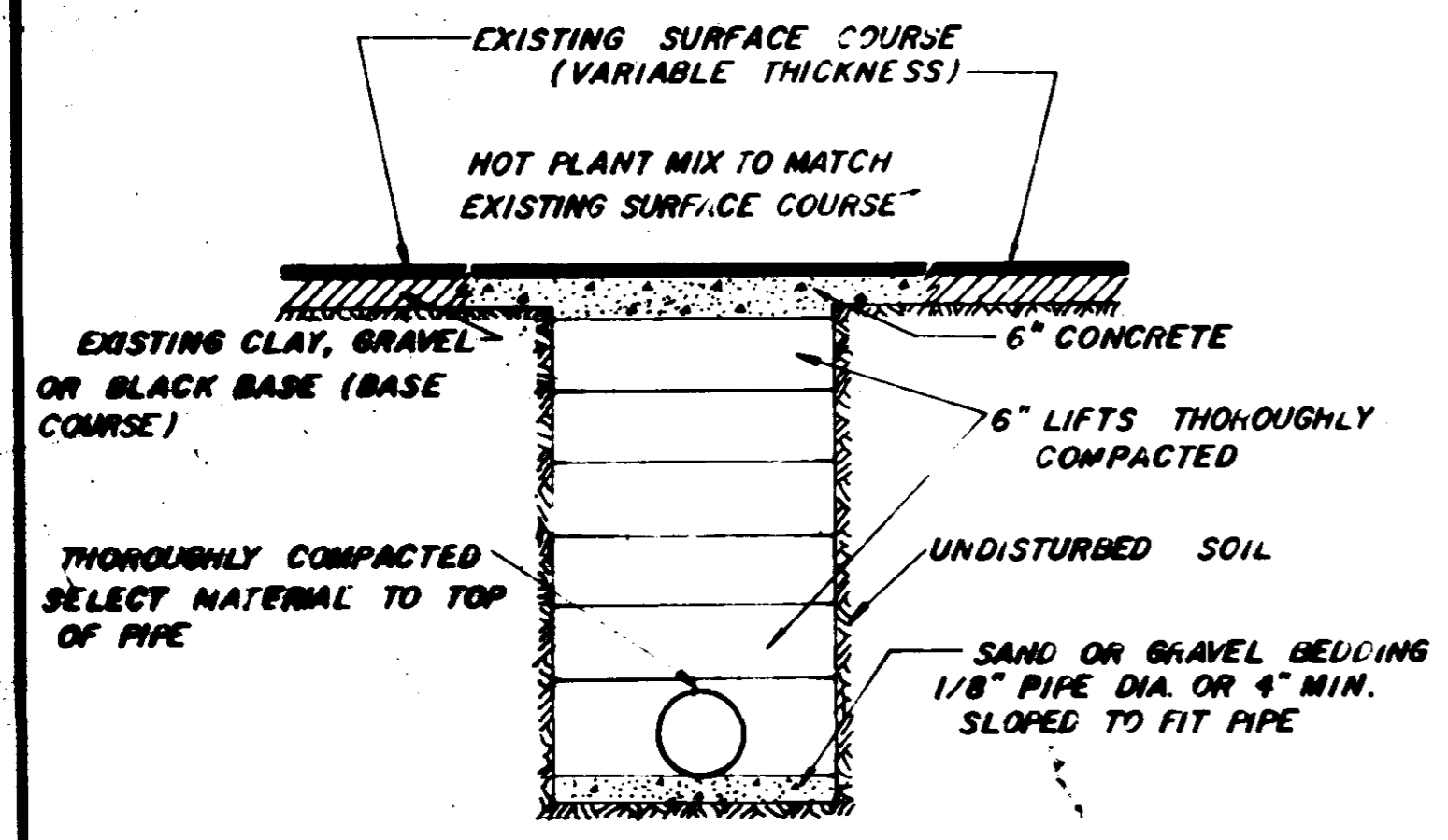


ELEVATION

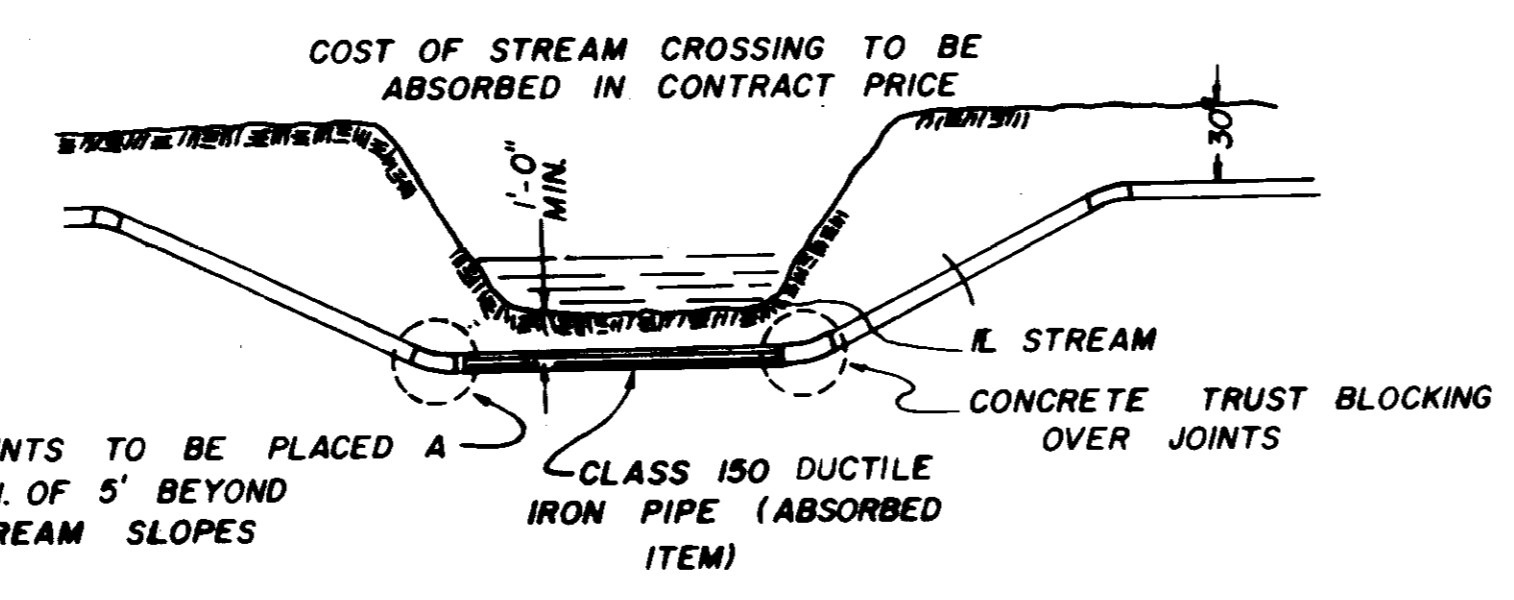
SECTION

TYPICAL VALVE & BOX

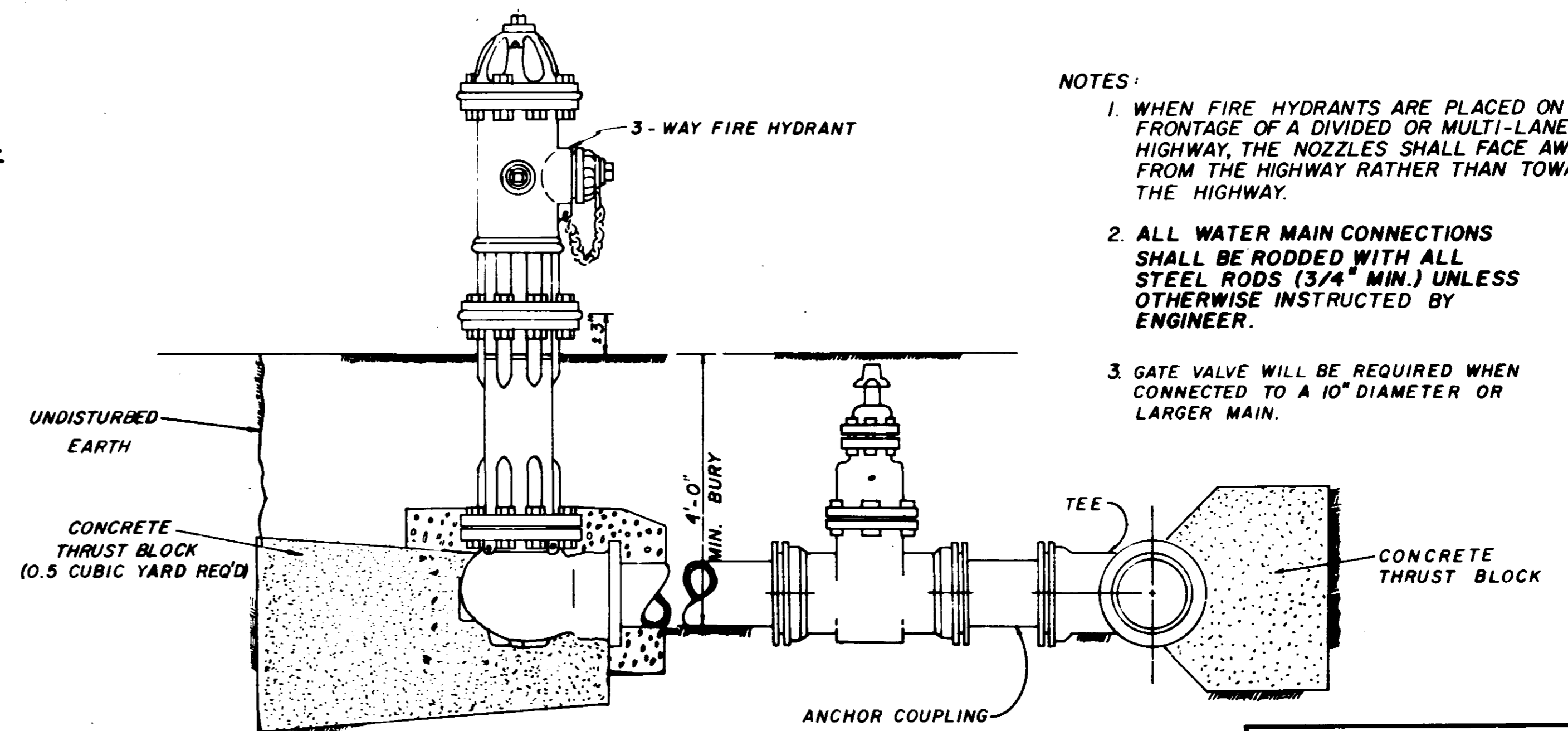
NOTE: ALL WATER MAIN CONNECTIONS SHALL BE RODDED WITH ALL STEEL RODS (3/4" MIN.) UNLESS OTHERWISE INSTRUCTED BY ENGINEER.



STREET REPAIR OF OPEN CUT



TYPICAL STREAM CROSSING



TYPICAL FIRE HYDRANT

- NOTES:
1. WHEN FIRE HYDRANTS ARE PLACED ON THE FRONTAGE OF A DIVIDED OR MULTI-LANE HIGHWAY, THE NOZZLES SHALL FACE AWAY FROM THE HIGHWAY RATHER THAN TOWARD THE HIGHWAY.
 2. ALL WATER MAIN CONNECTIONS SHALL BE RODDED WITH ALL STEEL RODS (3/4" MIN.) UNLESS OTHERWISE INSTRUCTED BY ENGINEER.
 3. GATE VALVE WILL BE REQUIRED WHEN CONNECTED TO A 10" DIAMETER OR LARGER MAIN.

WATER SYSTEM STANDARD DETAILS