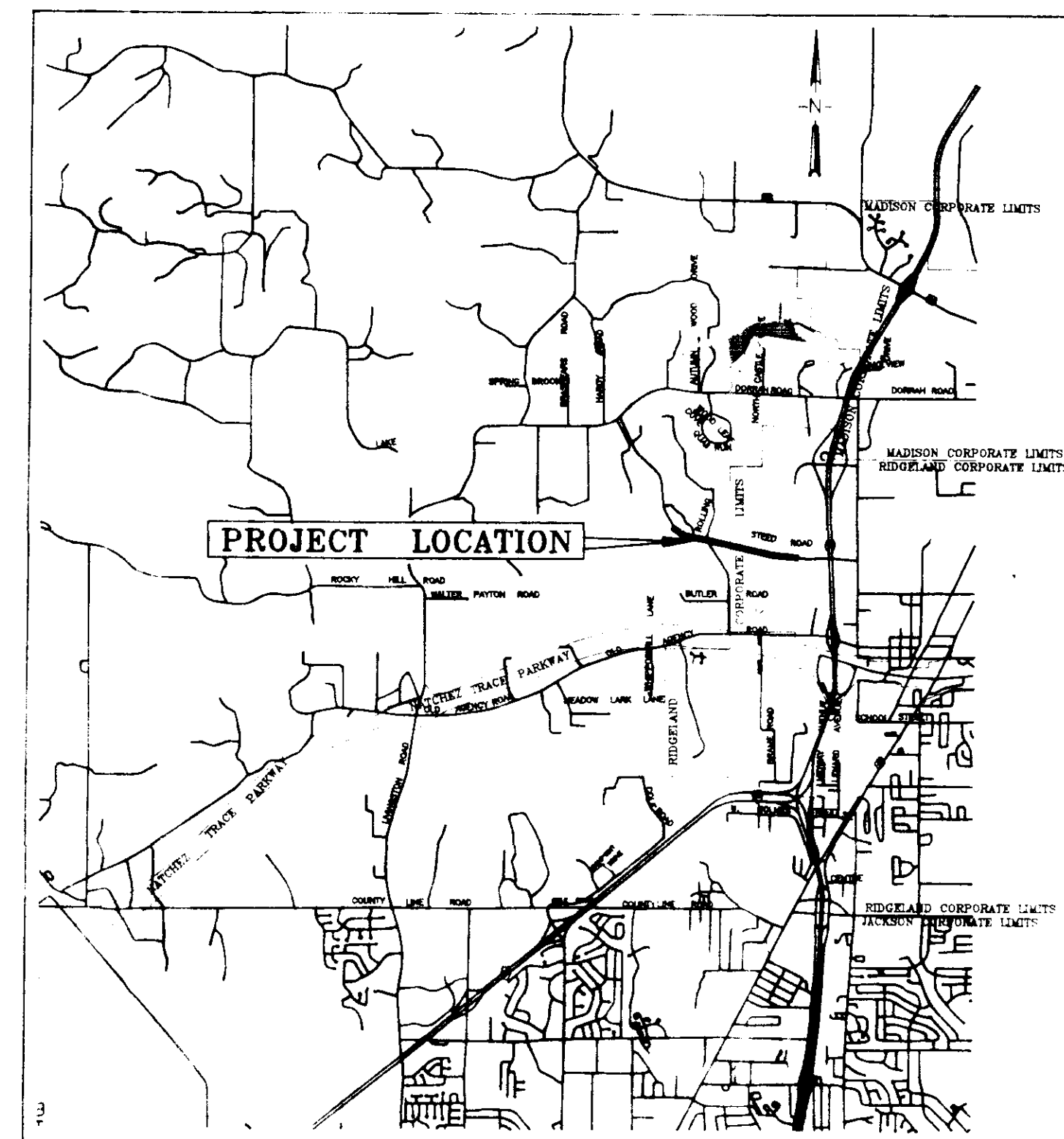


CITY OF RIDGELAND, MISSISSIPPI
HILLVIEW SUBDIVISION
12" WATER MAIN EXTENSION

Mayor:
Gene F. McGee
Mayor Pro Tem:
Harvey Carr, Jr.
City Attorney:
Jerry Mills



VICINITY MAP

Aldermen:
Brian Barcellona
Al Bible
Harvey Carr, Jr.
Linda Davis
Daryl Smith
Acting Public Works Director:
Sid Hawthorne
Acting City Clerk:
Becky Dixon

November 1989

WAGGONER ENGINEERING, INC.
Consulting Engineers
Jackson, Mississippi

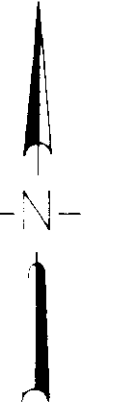
RECORD DRAWINGS

APRIL 1990

01906

PWP [Signature]

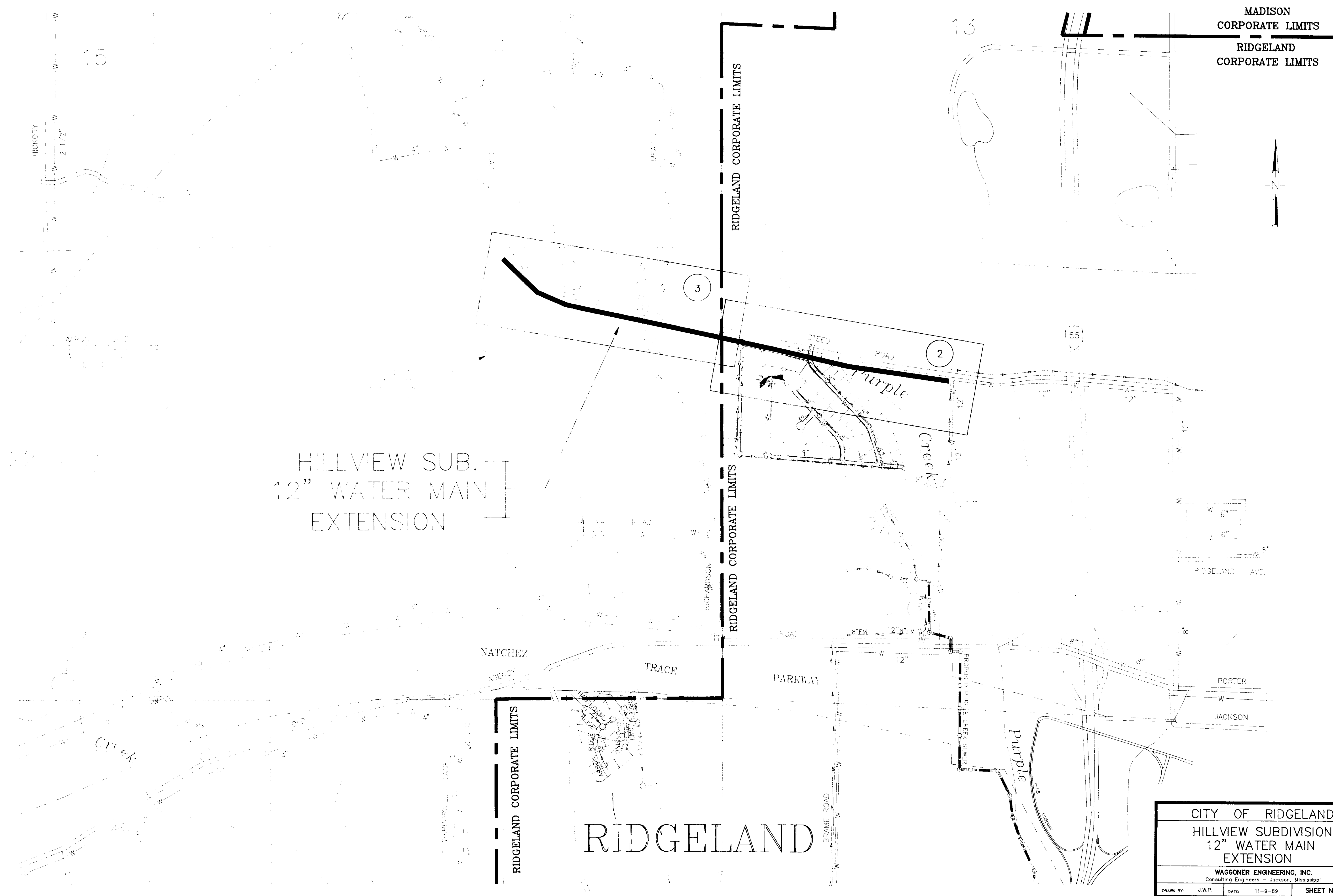
MADISON
CORPORATE LIMITS
RIDGELAND
CORPORATE LIMITS

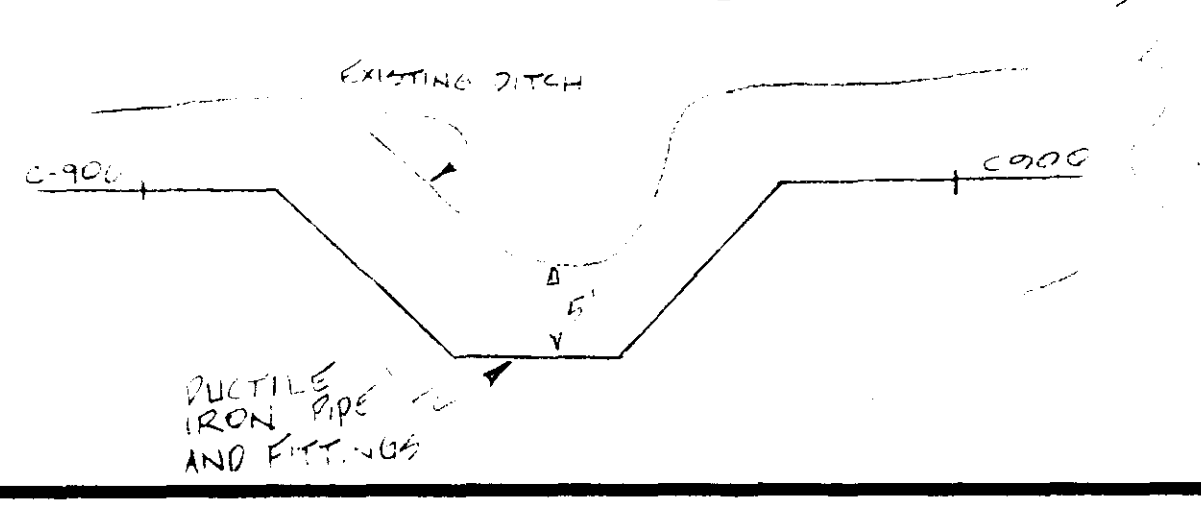
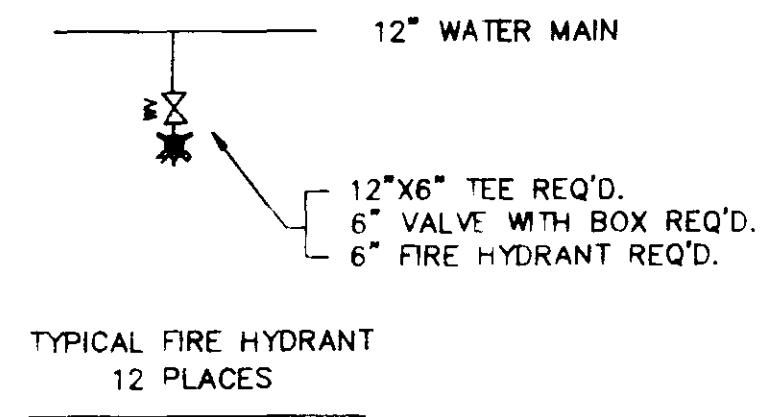
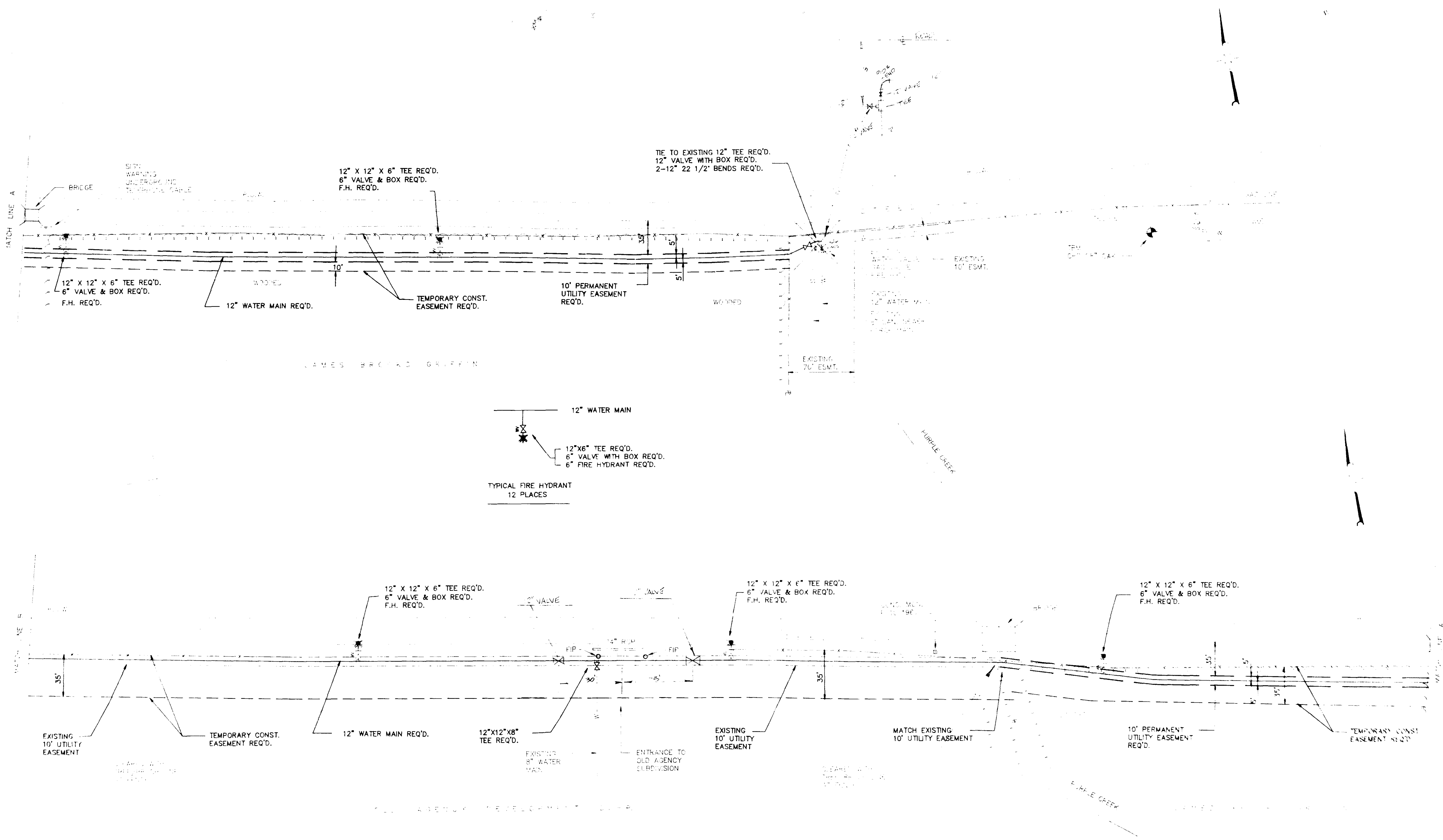


HILLVIEW SUB.
12" WATER MAIN
EXTENSION

RIDGELAND

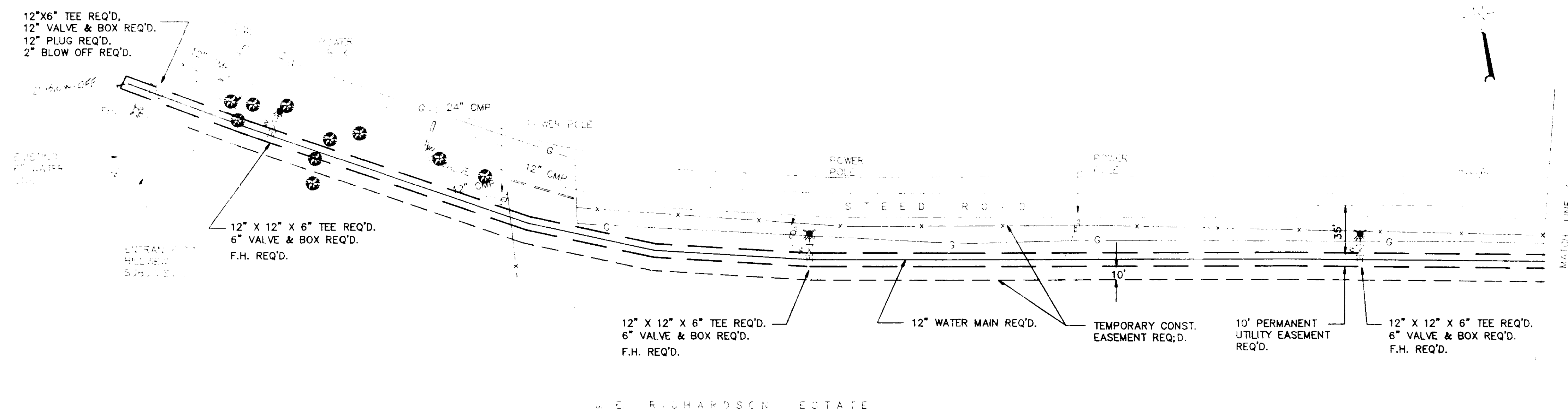
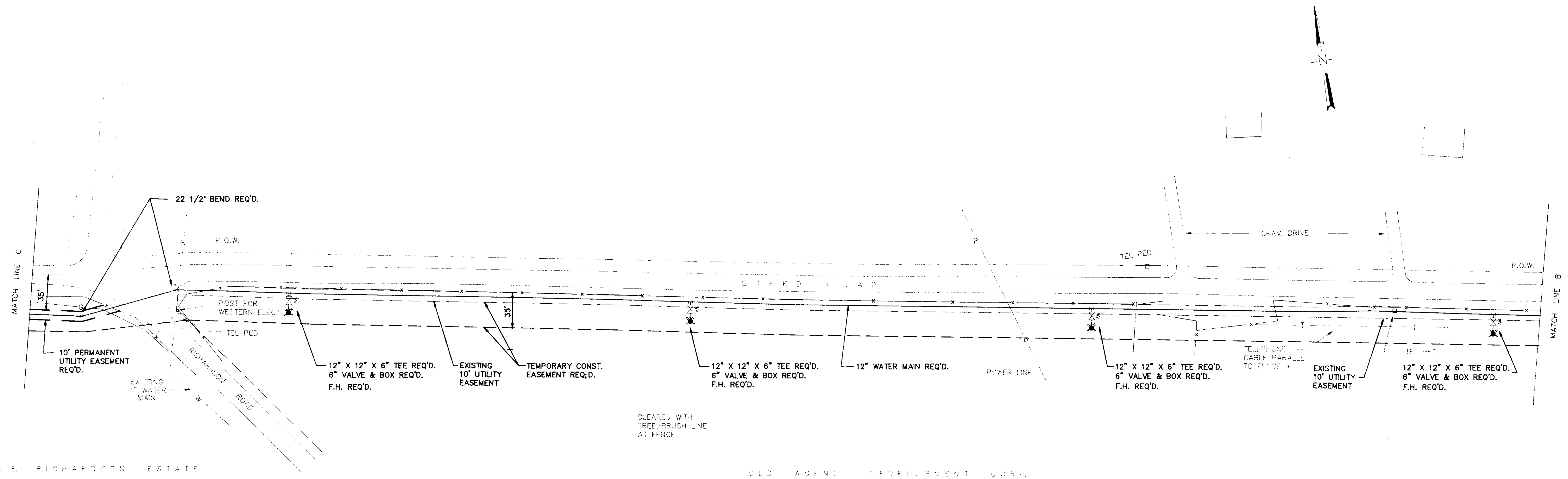
| | | |
|---|------------------|--------------|
| CITY OF RIDGELAND | | |
| HILLVIEW SUBDIVISION | | |
| 12" WATER MAIN | | |
| EXTENSION | | |
| WAGGONER ENGINEERING, INC. | | |
| Consulting Engineers - Jackson, Mississippi | | |
| DRAWN BY: J.W.P. | DATE: 11-9-89 | SHEET NUMBER |
| CHECKED BY: | SCALE: 1" = 500' | 1 OF 4 |





RECORD DRAWINGS
APRIL 1990

| | | |
|---|-----------------|--------------|
| CITY OF RIDGELAND | | |
| HILLVIEW SUBDIVISION 12" WATER MAIN EXTENSION | | |
| WAGGONER ENGINEERING, INC. Consulting Engineers - Jackson, Mississippi | | |
| DRAWN BY: J.W.P. | DATE: 11-9-89 | SHEET NUMBER |
| CHECKED BY: | SCALE: 1" = 50' | 2 OF 4 |



RECORD DRAWINGS
APRIL 1990

| | | | |
|---|-----------------|--------------|--|
| CITY OF RIDGELAND | | | |
| HILLVIEW SUBDIVISION | | | |
| 12" WATER MAIN EXTENSION | | | |
| WAGGONER ENGINEERING, INC. Consulting Engineers - Jackson, Mississippi | | | |
| DRAWN BY: J.W.P. | DATE: 11-9-89 | SHEET NUMBER | |
| CHECKED BY: | SCALE: 1" = 50' | 3 OF 4 | |