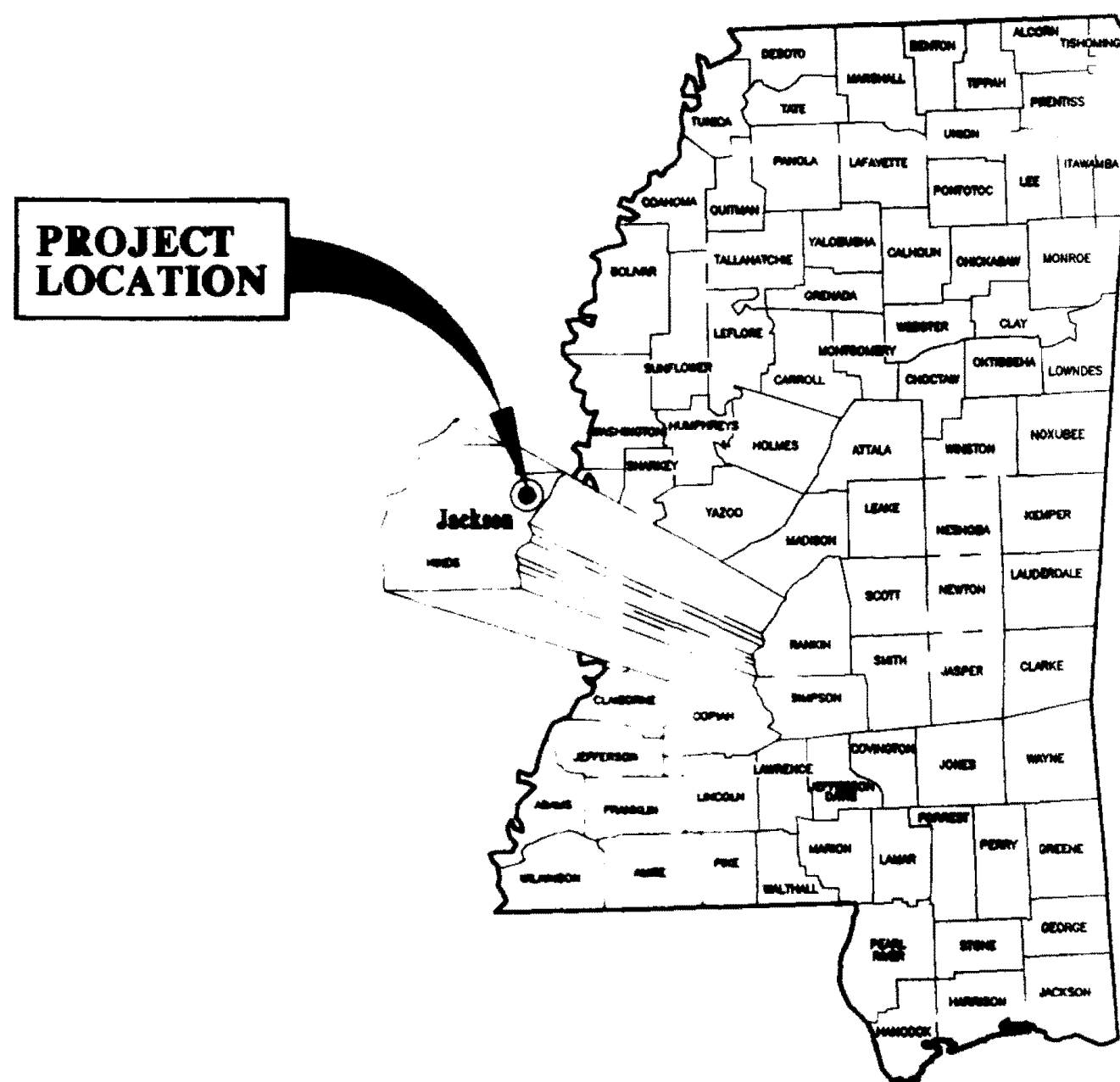
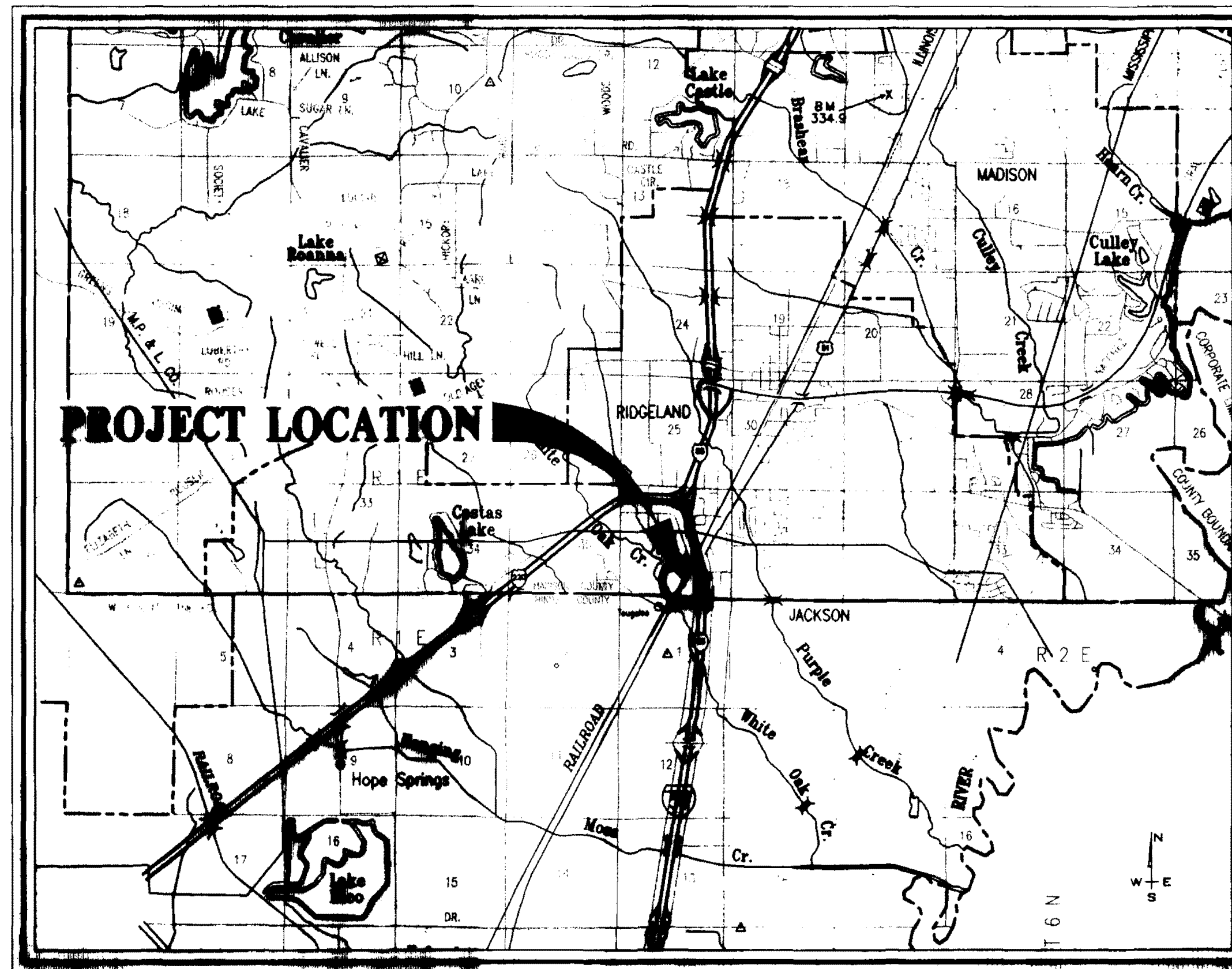


CONSTRUCTION PLANS FOR WATER & SANITARY SEWER IMPROVEMENTS

WILLIAM G. COOK, JR. AGENT FOR ANDERSON, STEPHENS & EDWARDS



VICINITY MAP



LOCATION MAP
SCALE: 1"=1 MILE

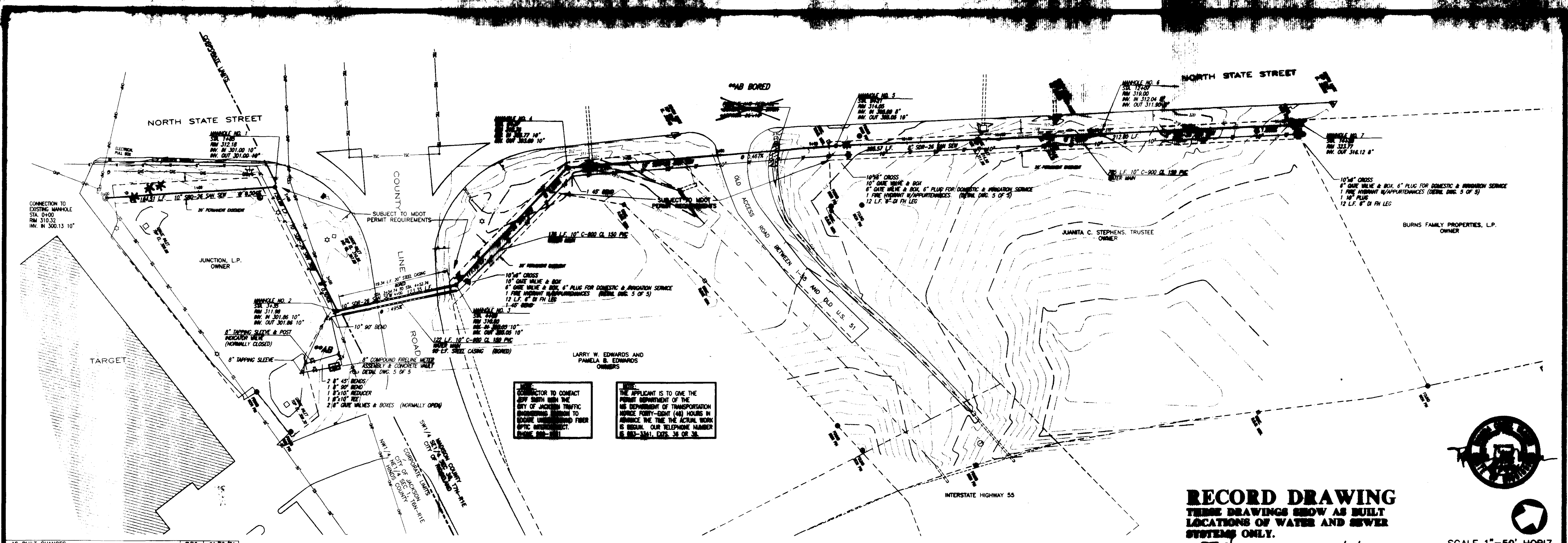
RECORD DRAWING
THESE DRAWINGS SHOW AS BUILT
LOCATIONS OF WATER AND SEWER
SYSTEMS ONLY.

BY: *RC Vann* DATE: 4/29/96

STERLING
Consultants
CORPORATE

Robert Carl Vann
ROBERT CARL VANN, P.E.
NO LICENSE NO.

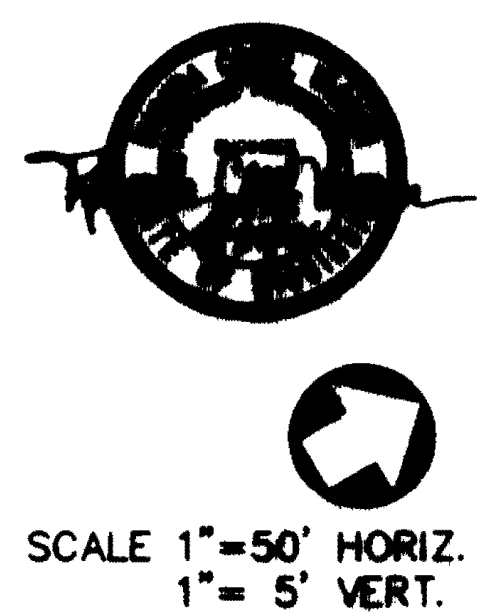
PWP-00103



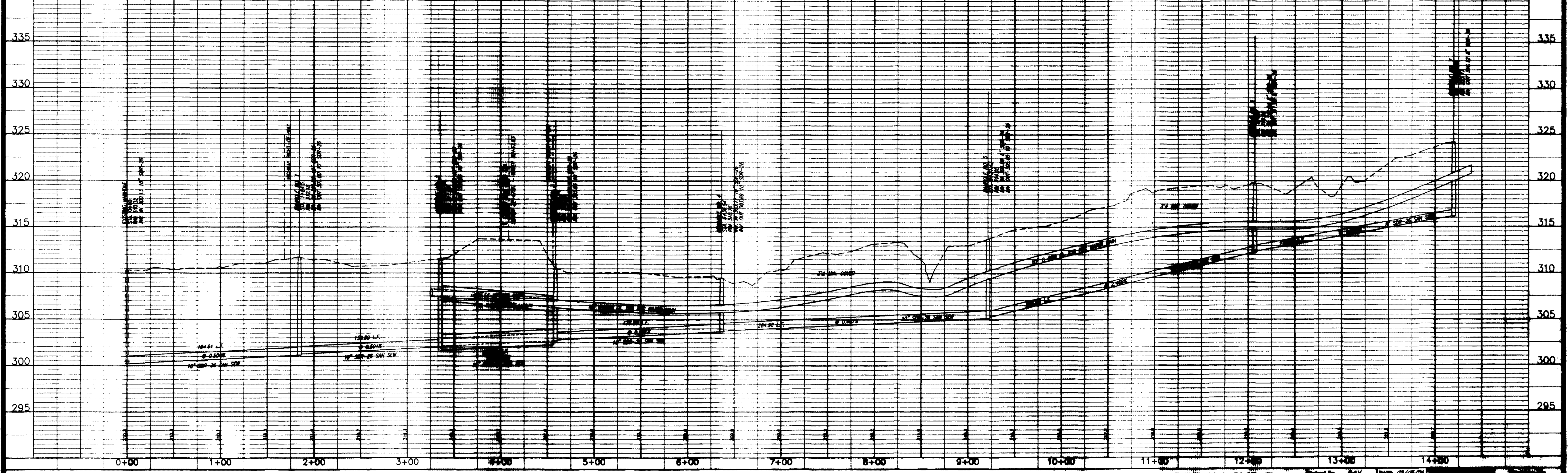
CONTRACTOR TO CONTACT CITY ENGINEER WITH THE CITY OF JACKSON TRAFFIC ENGINEERING DEPARTMENT TO OBTAIN UNDERGROUND FIBER OPTIC INFORMATION. PHONE 392-1811

THE APPLICANT IS TO GIVE THE PERMIT DEPARTMENT OF THE MISSISSIPPI DEPARTMENT OF TRANSPORTATION NOTICE FORTY-EIGHT (48) HOURS IN ADVANCE THE TIME THE ACTUAL WORK IS BEGUN. OUR TELEPHONE NUMBER IS 392-3311, EXT. 34 OR 36.

RECORD DRAWING
 THESE DRAWINGS SHOW AS BUILT LOCATIONS OF WATER AND SEWER SYSTEMS ONLY.
 BY: *RC* DATE: *4/20/20*

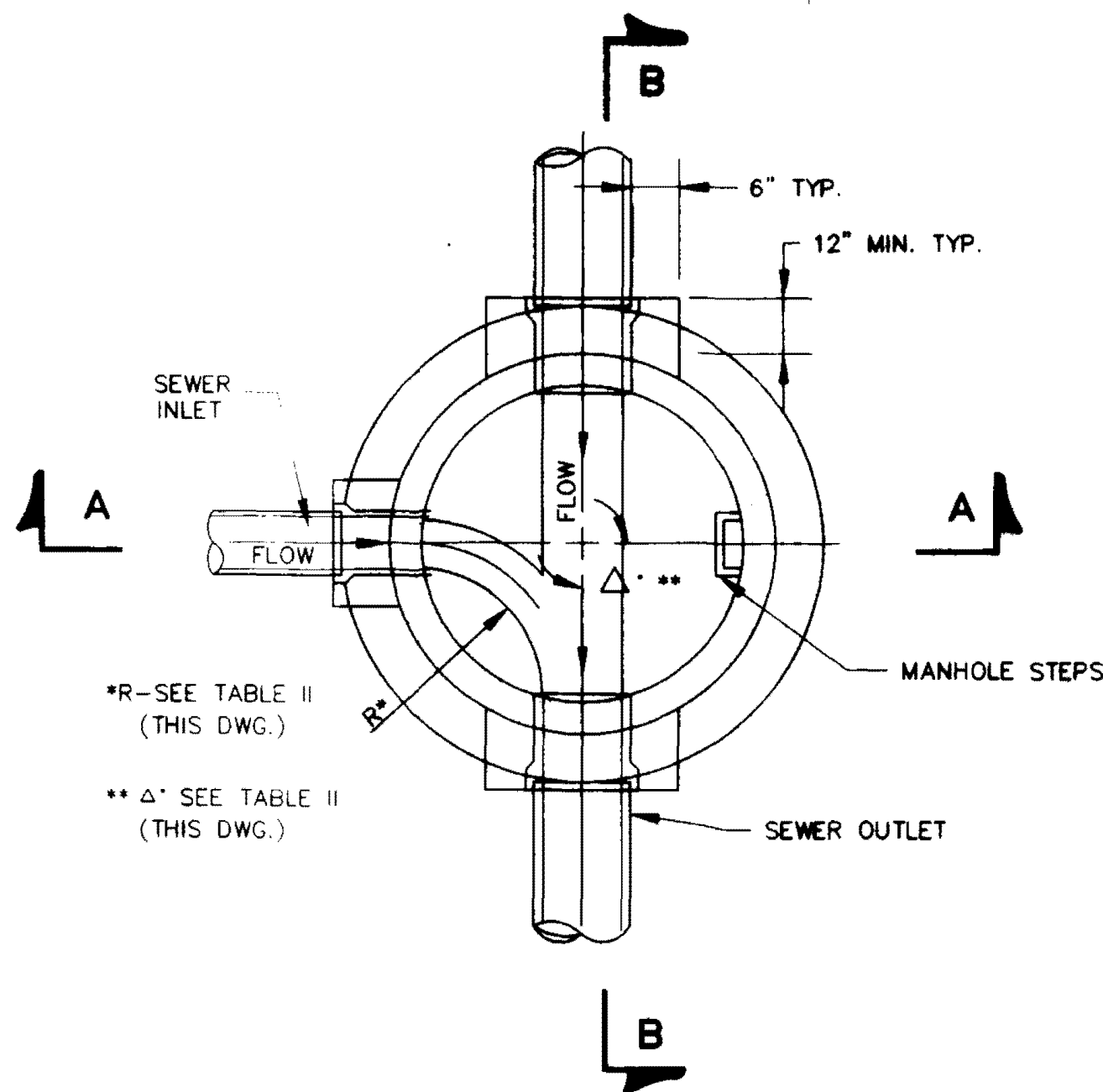


AS BUILT CHANGES	RDP	04/29/20
**AB INDICATES SIGNIFICANT AS BUILT MODIFICATIONS	RDP	04/29/20
ADDED GATE VALVES & NOTE PER REVIEW	RDP	03/28/20



WATER & SANITARY SEWER IMPROVEMENTS
PLAN AND PROFILE - SANITARY SEWER & WATER LINE
 NORTH STATE STREET @ COUNTY LINE ROAD
 STA. 0+00 - STA. 14+19.80

WILLIAM G. COOK, JR.
 ASSET FOR
 ANDERSON, SAMPSON & EDWARDS
 3-5

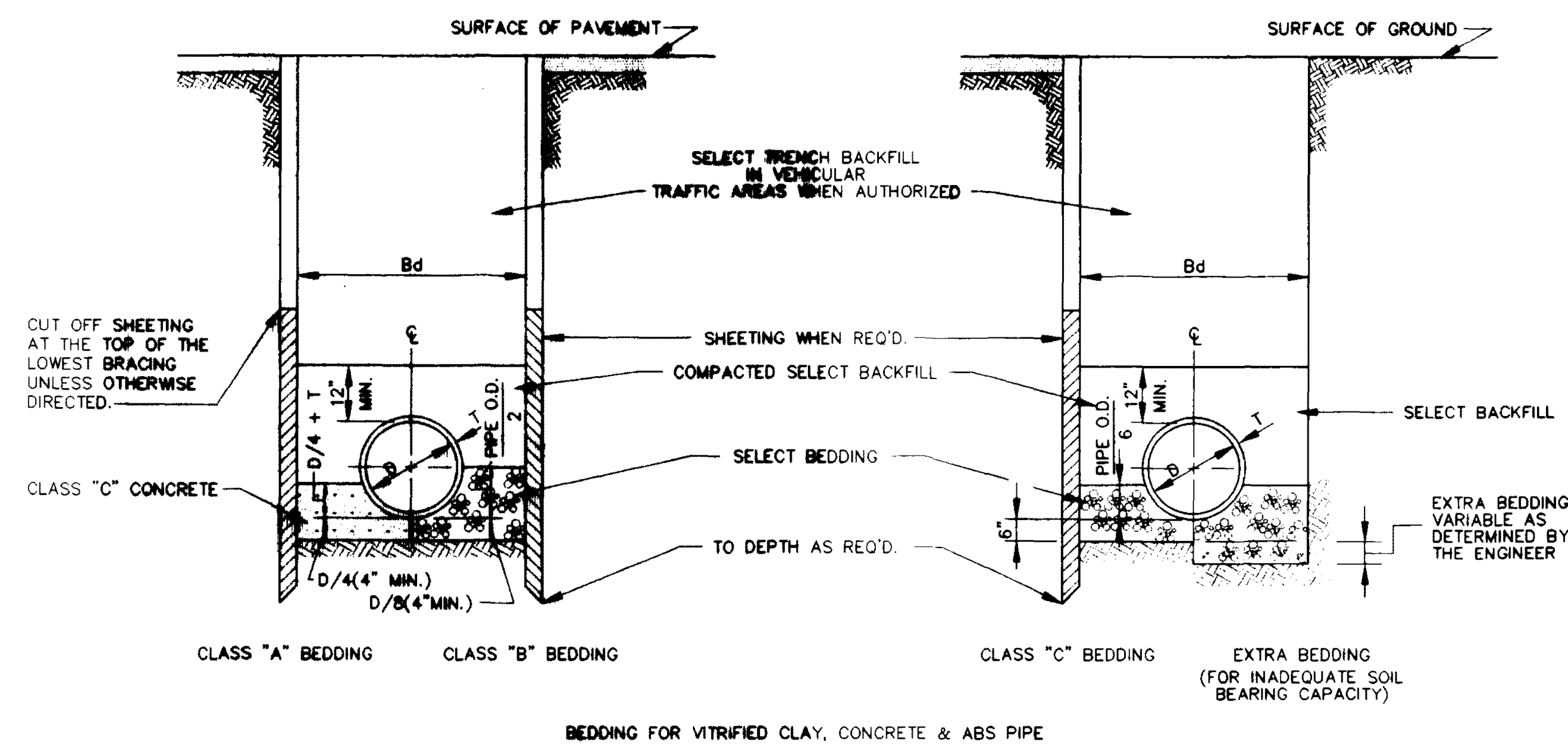


**SECTIONAL PLAN
STANDARD MANHOLE**
NOT TO SCALE

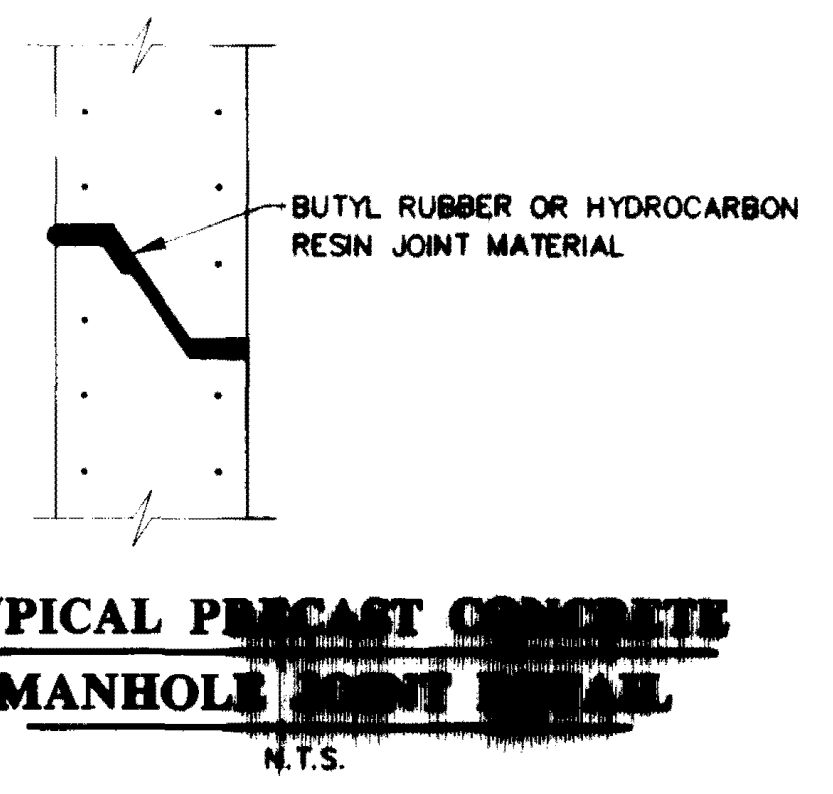
TABLE II
GOVERNING DIMENSIONS FOR MANHOLES

PIPE SIZE	Δ ANGLE	BASE DIAMETER **	"R" *
8" THRU 12"	0° TO 90°	4'	1'- 6"
15"	0° TO 60°	4'	1'- 10"
15"	60° TO 90°	4'	1'- 10"
18"	0° TO 60°	4'	2'- 3"
18"	60° TO 90°	4'	1'- 10"
21"	0° TO 60°	4'	2'- 7"
21"	60° TO 90°	5'	2'- 4"
24"	0° TO 45°	4'	3'- 0"
24"	45° TO 90°	5'	2'- 3"
30"	0° TO 60°	5'	3'- 9"
30"	60° TO 90°	6'	2'- 8"
36"	0° TO 60°	6'	4'- 6"
36"	60° TO 90°	7'	3'- 11"
42"	0° TO 60°	7'	5'- 3"
42"	60° TO 90°	8'	4'- 7"
48"	0° TO 60°	8'	6'- 0"
48"	60° TO 90°	9'	5'- 3"

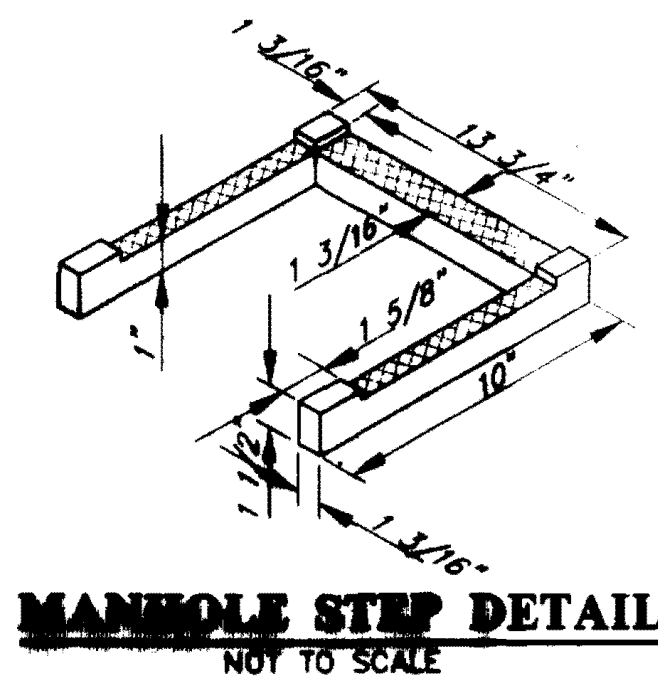
* SEE SECTIONAL PLAN, STANDARD MANHOLE
** PRECAST MANHOLE



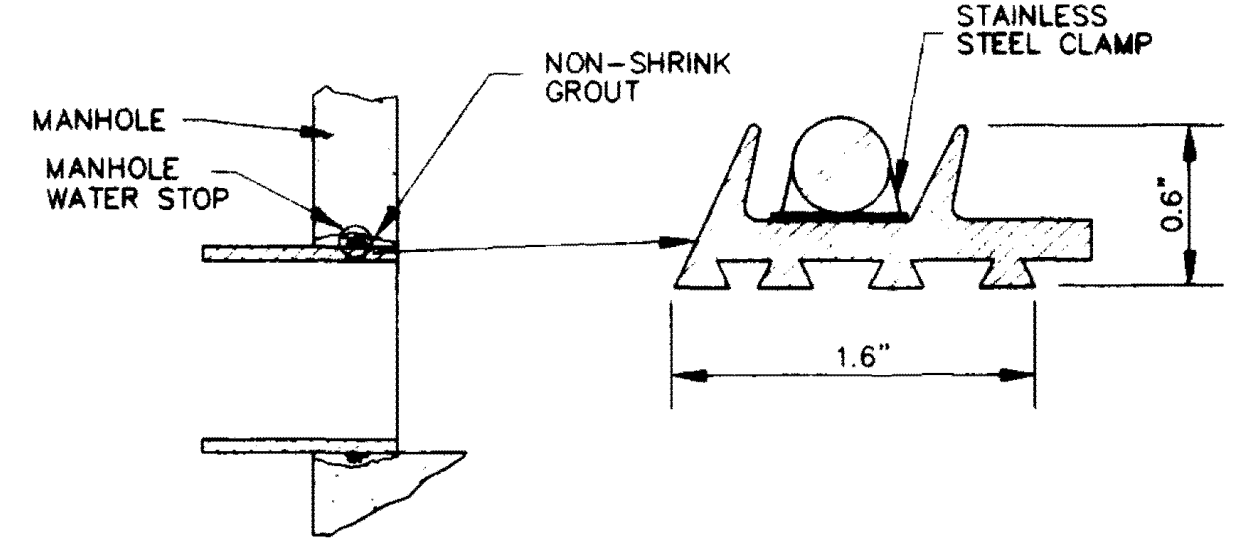
TYPICAL TRENCH DETAILS
NOT TO SCALE



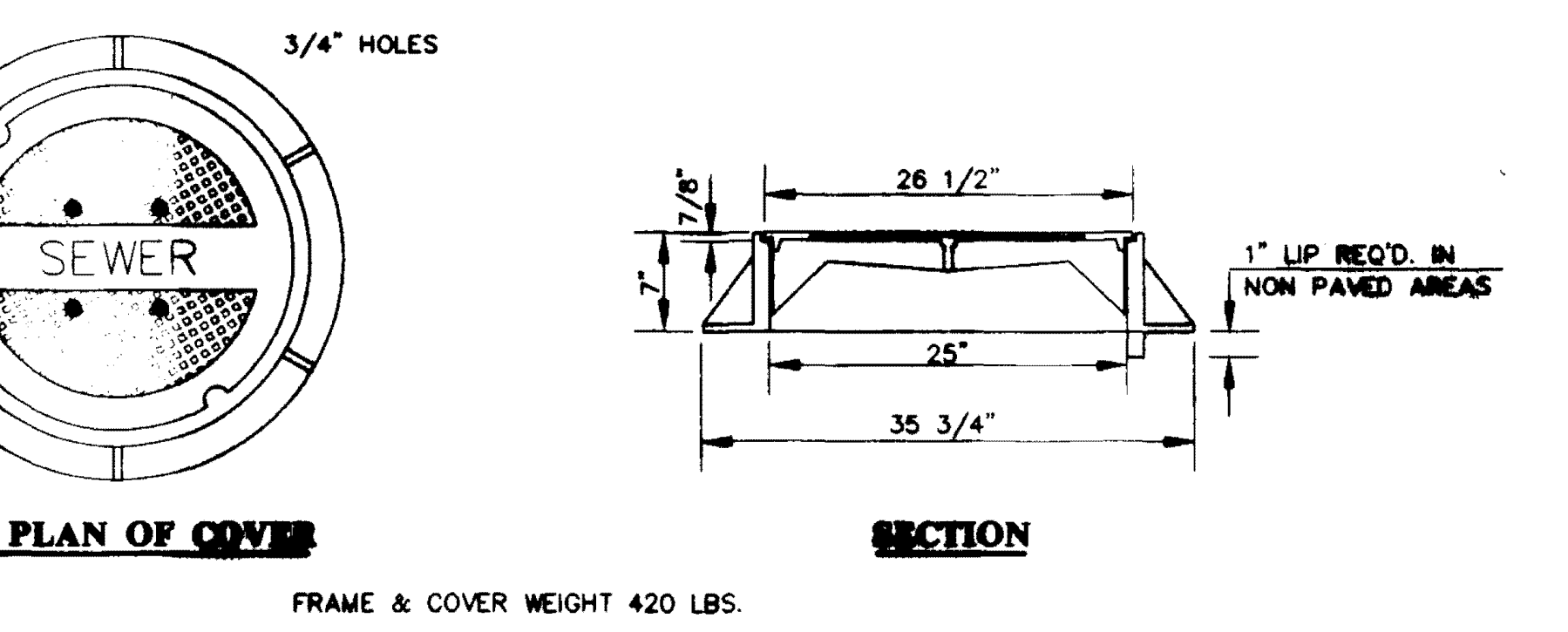
**TYPICAL PRECAST CONCRETE
MANHOLE JOINT DETAIL**
N.T.S.



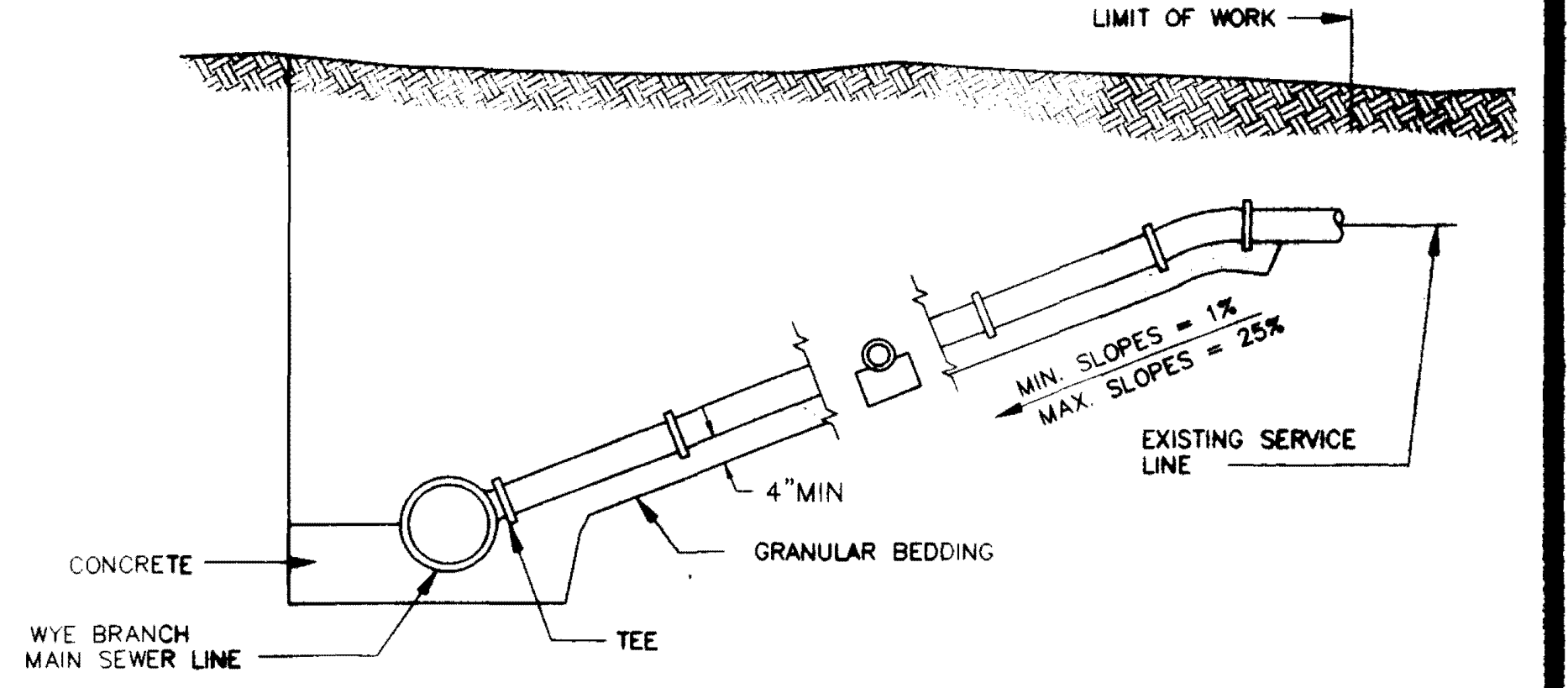
MANHOLE STEP DETAIL
NOT TO SCALE



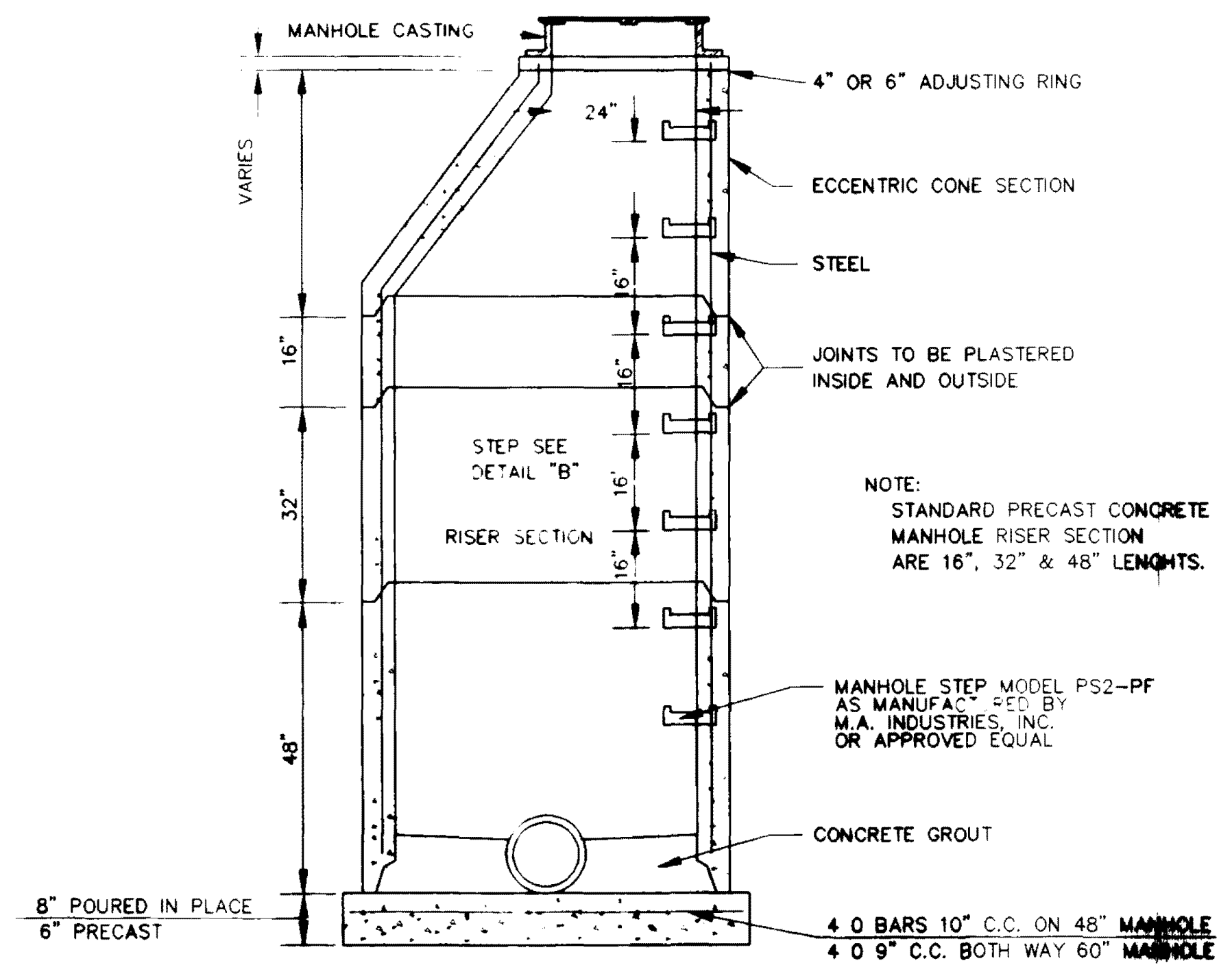
**TYPICAL MANHOLE WATER STOP
FOR ABS, CLAY OR PVC PIPE**
EXISTING AND "STRADDLE" MANHOLES
N.T.S.



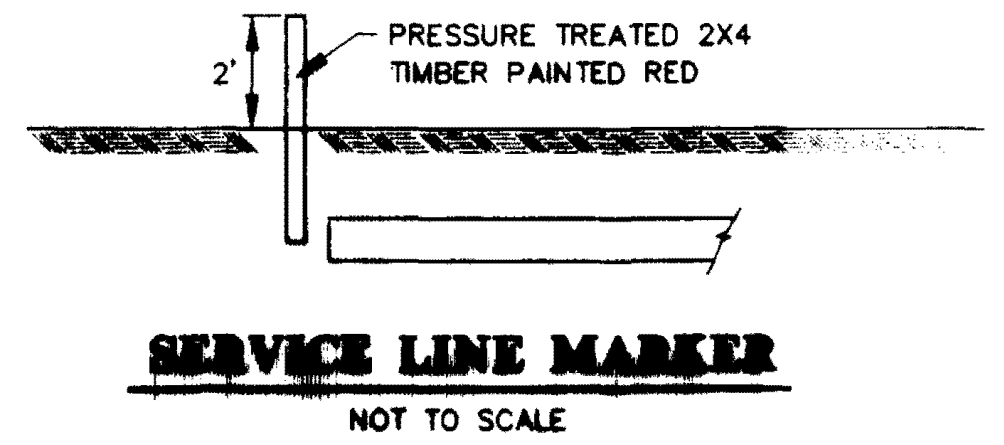
TOP PLAN OF COVER
SECTION
FRAME & COVER WEIGHT 420 LBS.
STANDARD MANHOLE FRAME AND COVER
N.T.S.



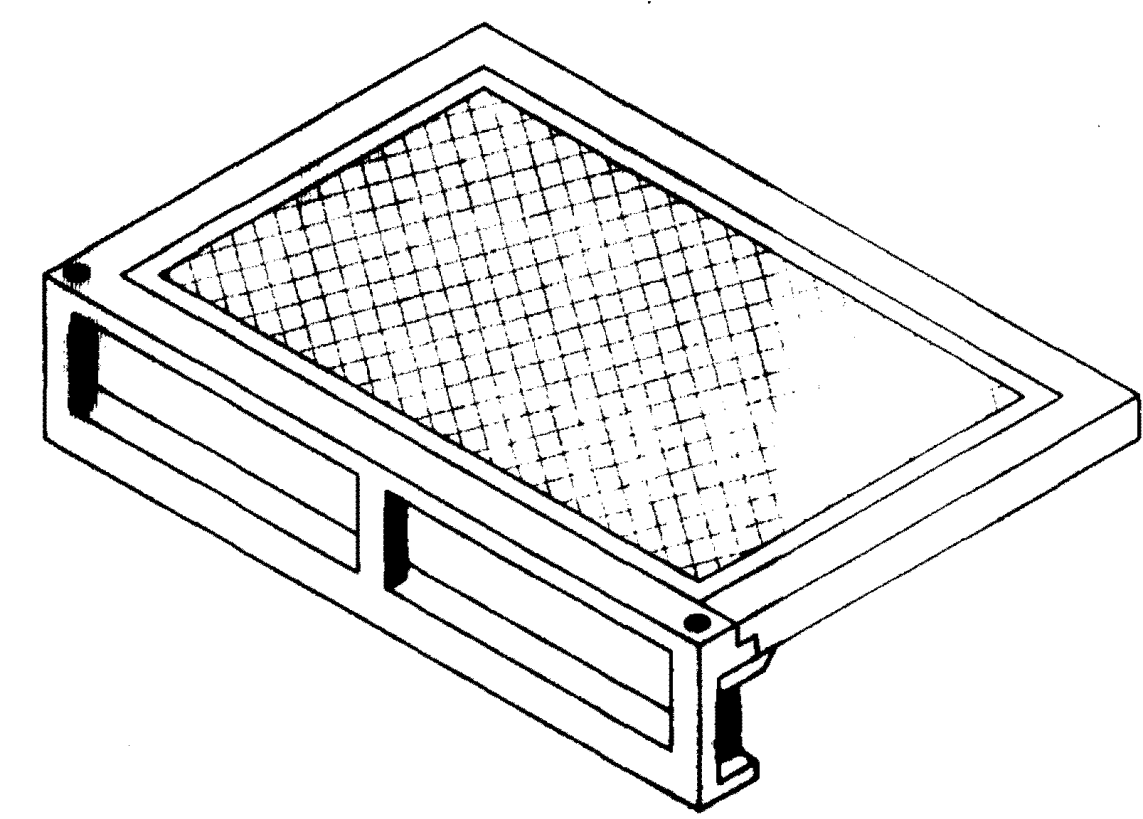
TYPICAL SERVICE LINE CONNECTION
NOT TO SCALE



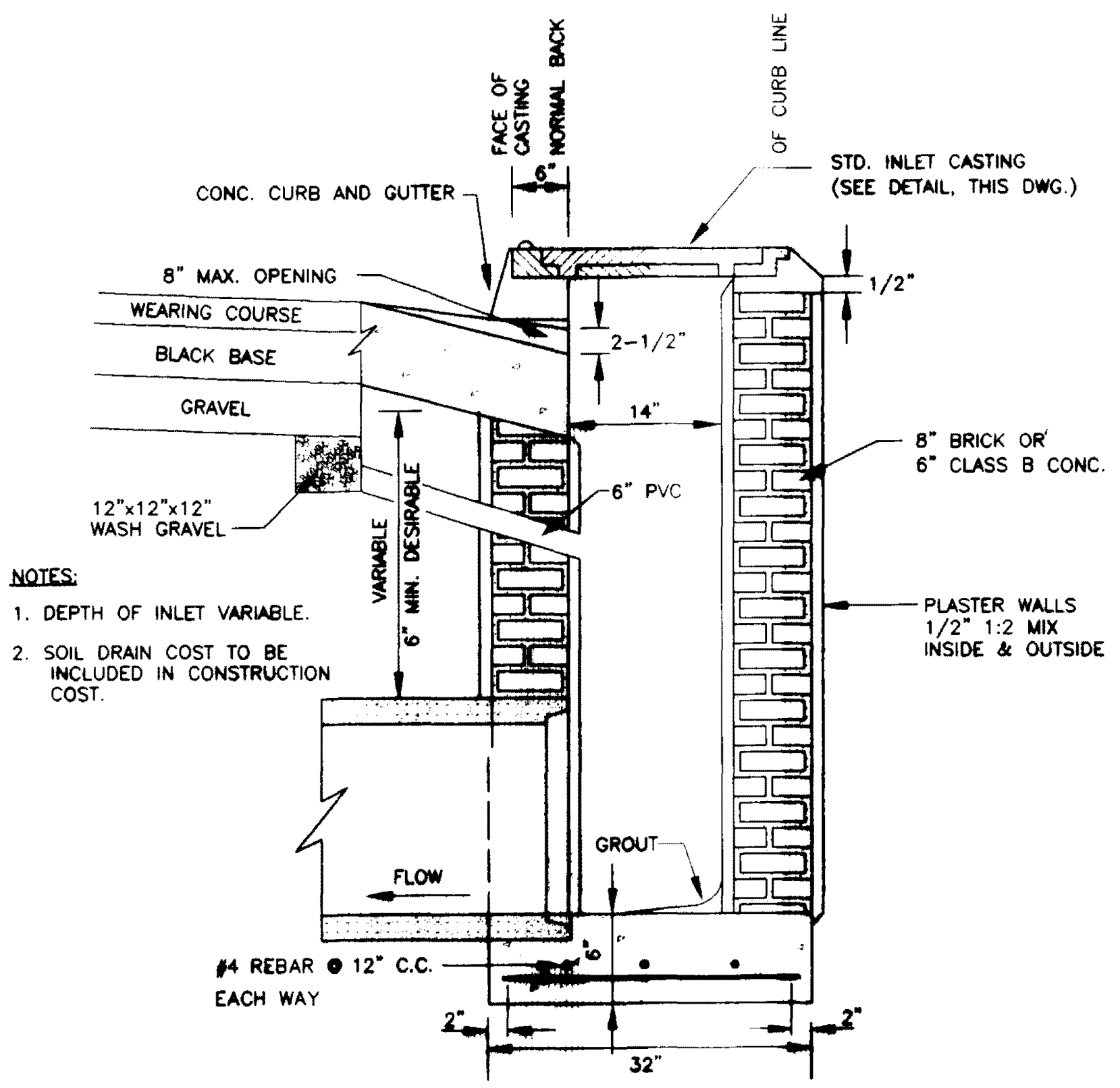
SECTION OF PRECAST CONCRETE MANHOLE
N.T.S.



SERVICE LINE MARKER
NOT TO SCALE



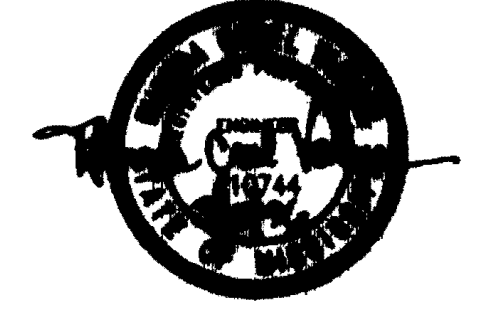
STANDARD CURB INLET CASTING
(VULCAN V-4892-1 OR HARPER RCB-7)
N.T.S.



NOTES:
1. DEPTH OF INLET VARIABLE.
2. SOIL DRAIN COST TO BE INCLUDED IN CONSTRUCTION COST.

SECTION OF STANDARD CURB INLET

RECORD DRAWING
THESE DRAWINGS SHOW AS BUILT
LOCATIONS OF WATER AND SEWER
SYSTEMS ONLY.



WATER & SANITARY SEWER IMPROVEMENTS
WILLIAM G. COOK, P.E.
AND ASSOCIATES
ANDERSON, STERLING & BOWEN

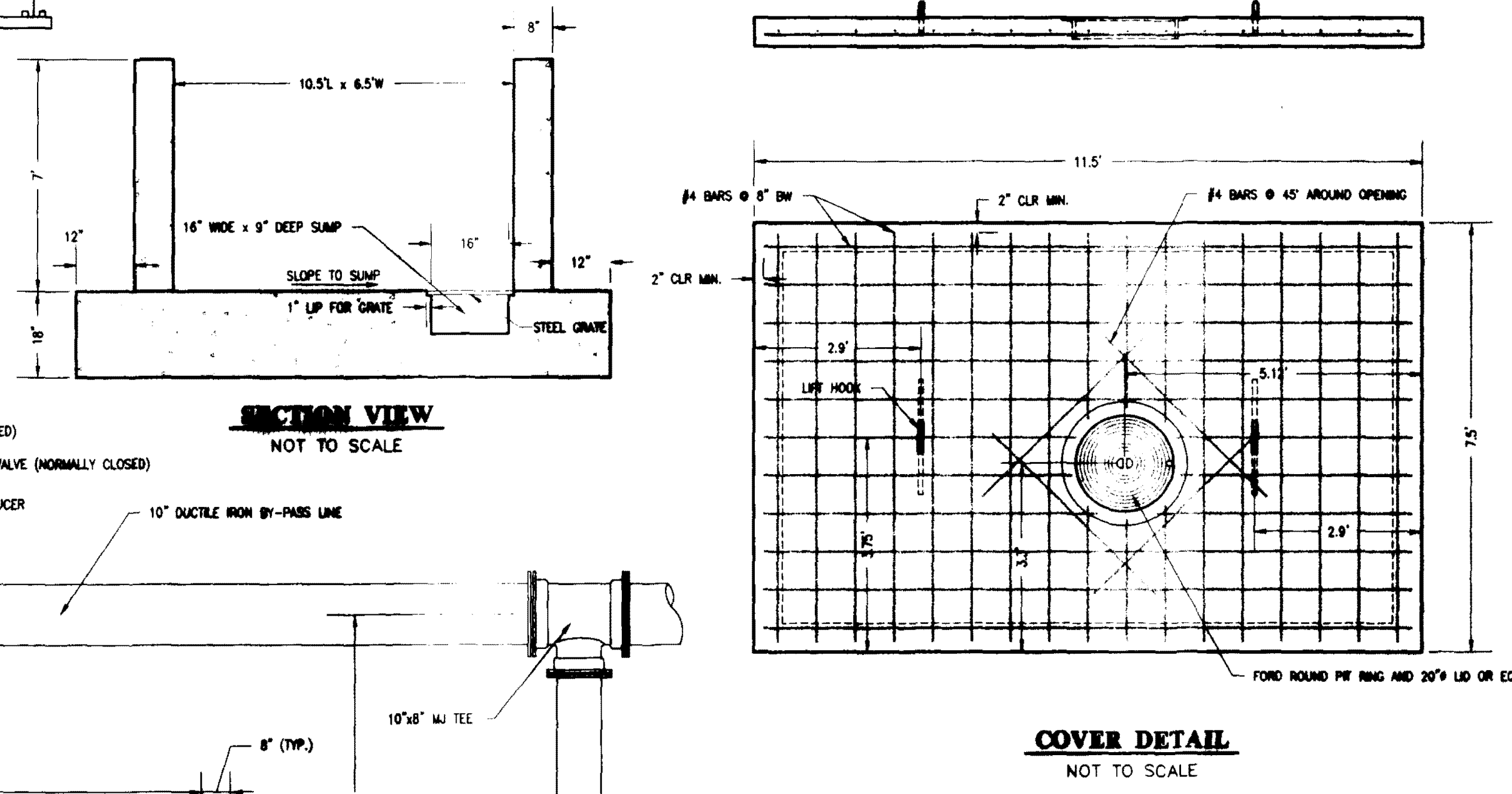
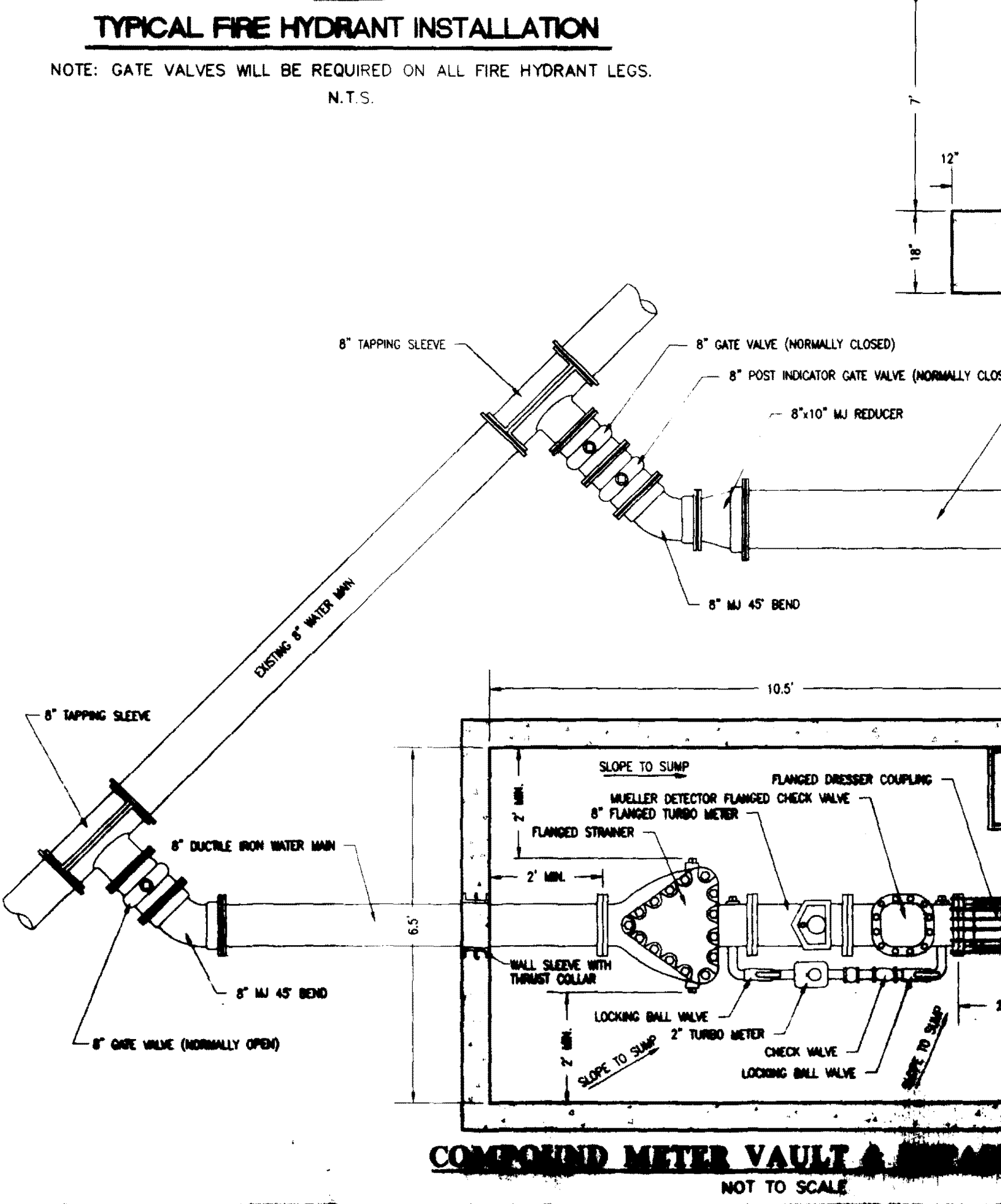
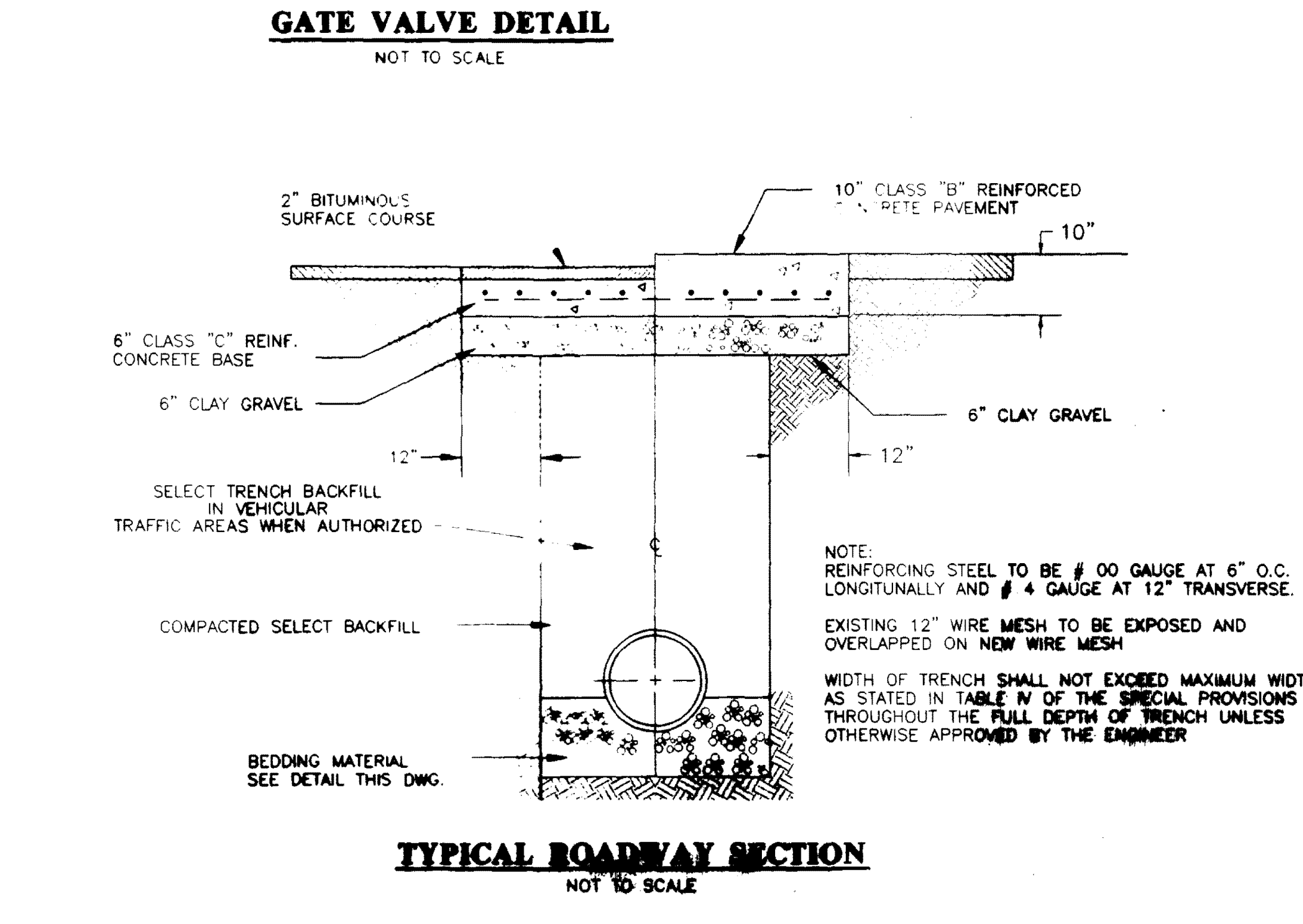
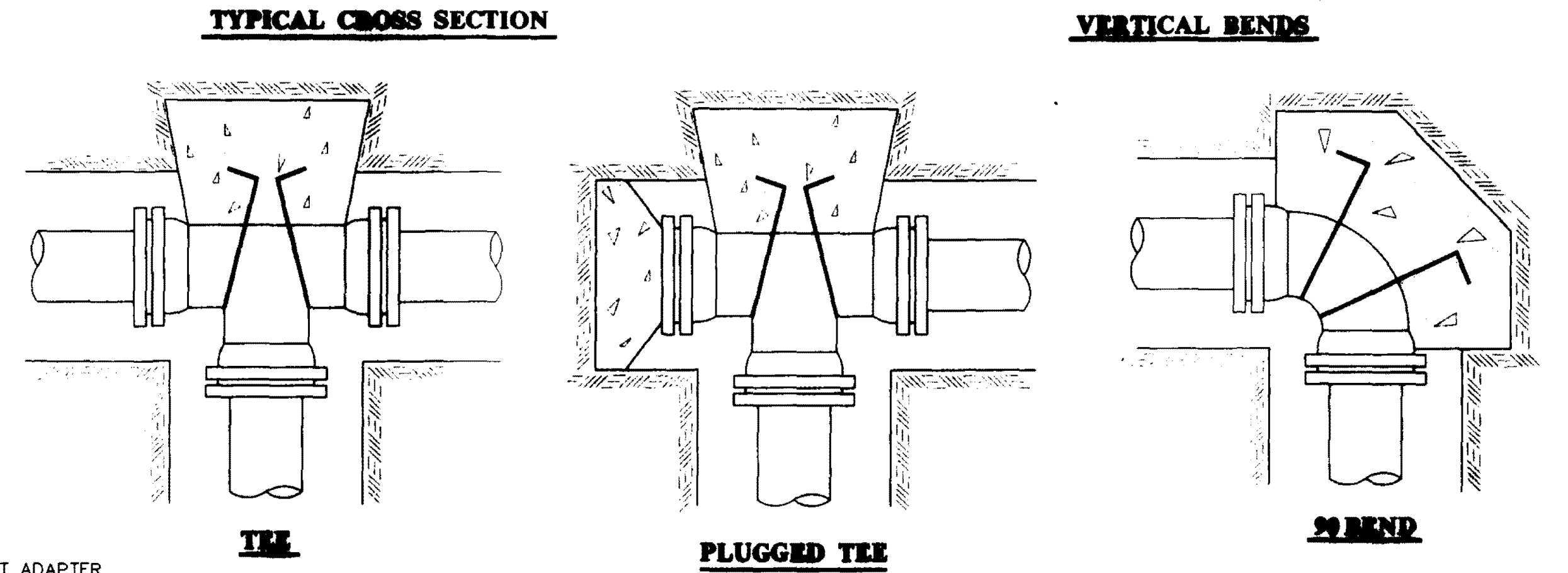
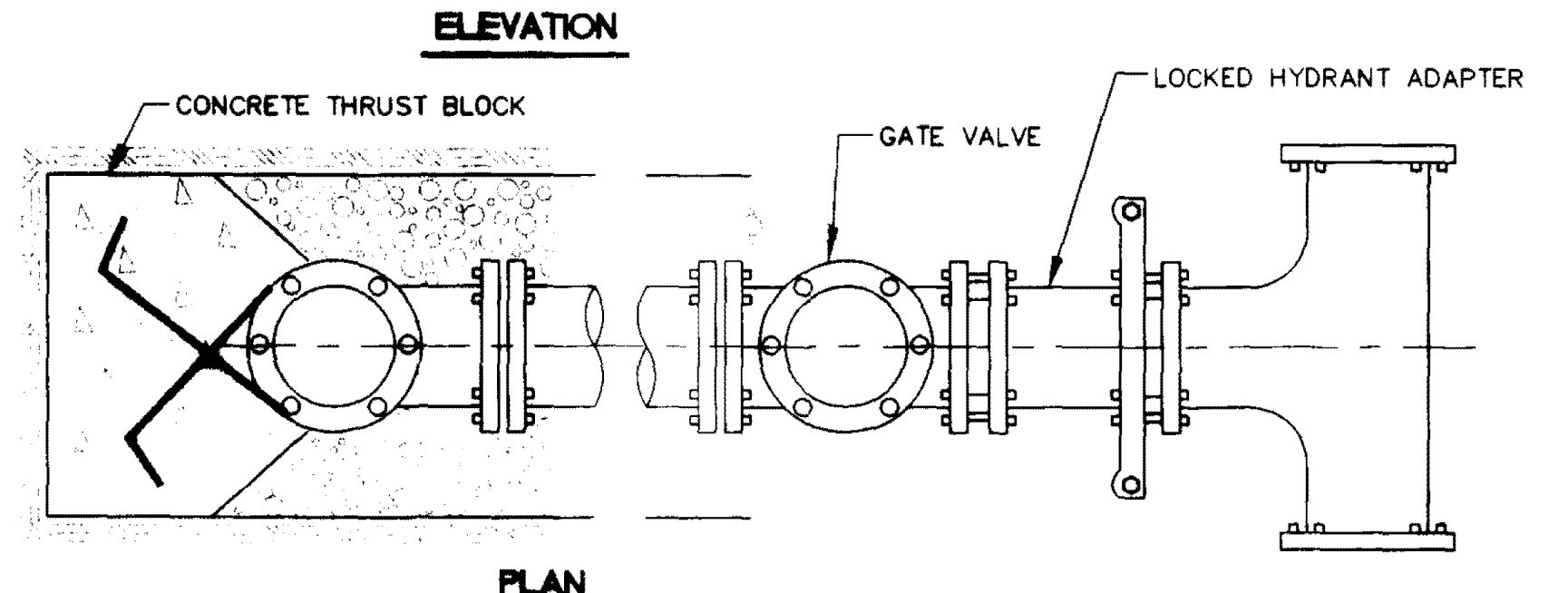
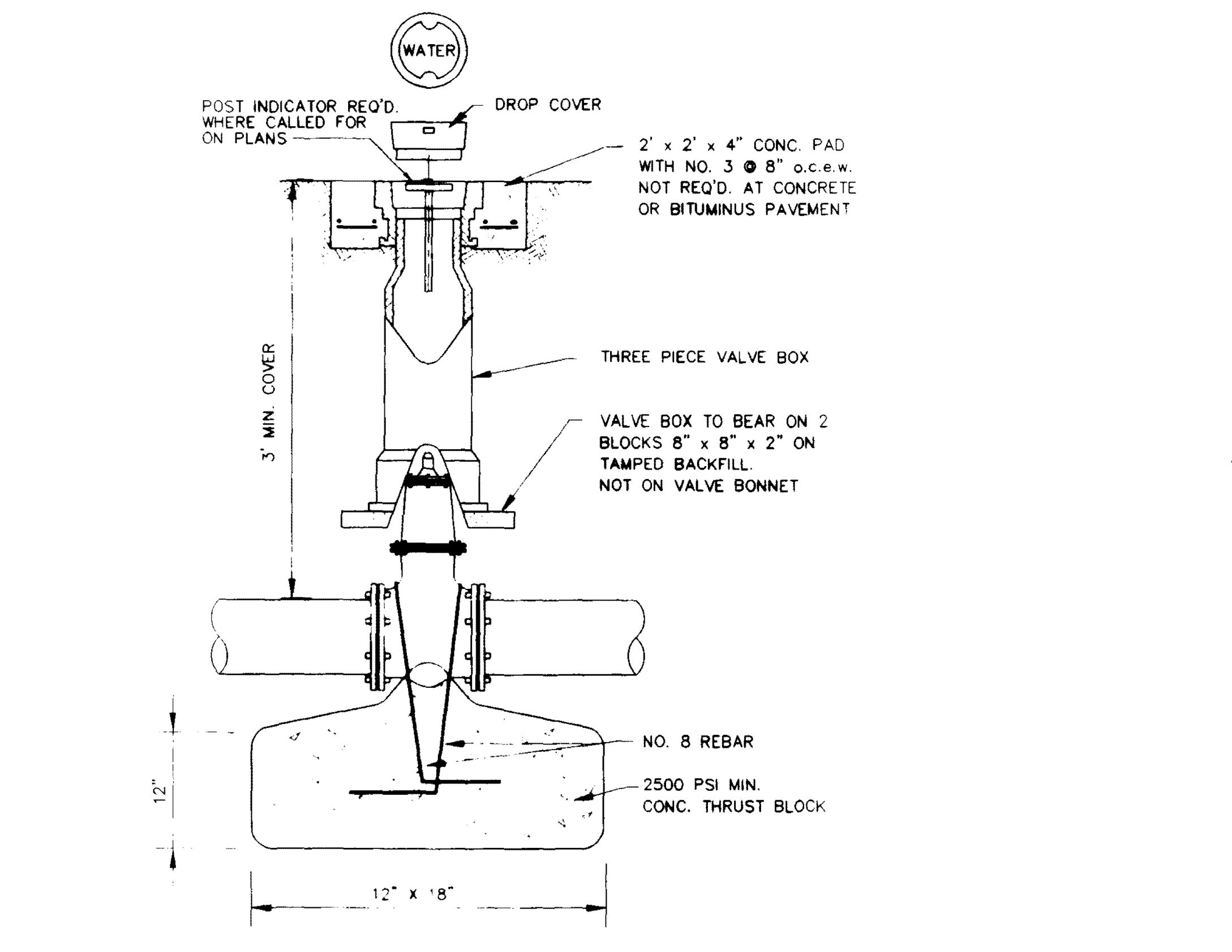
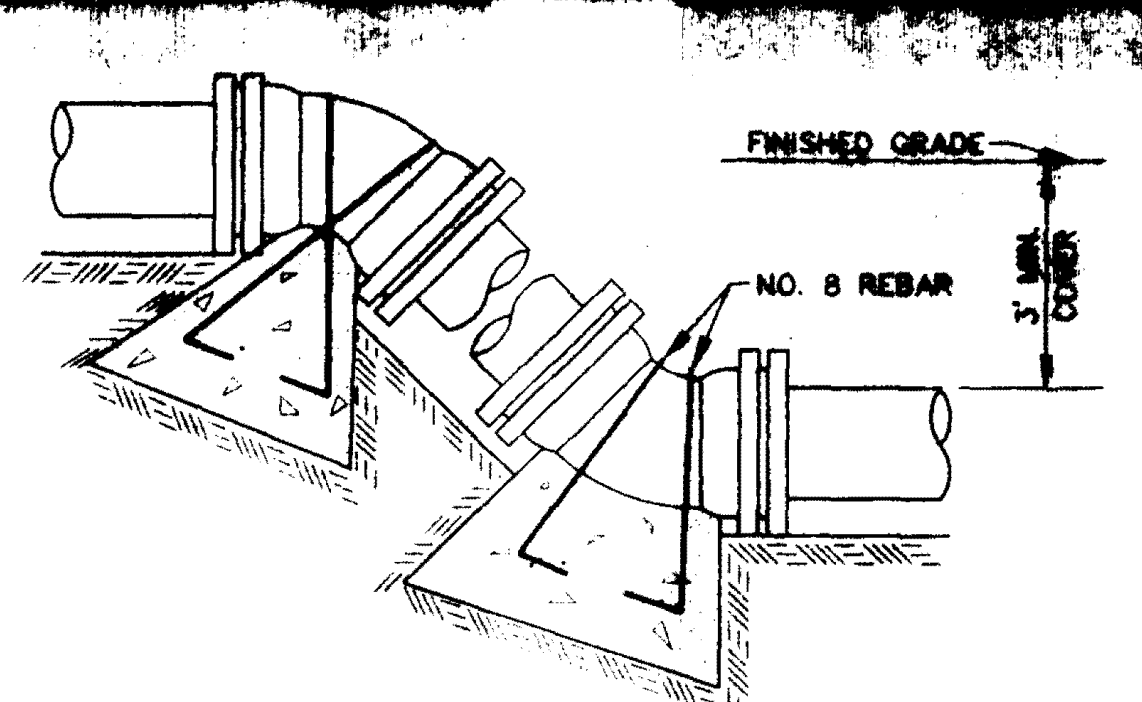
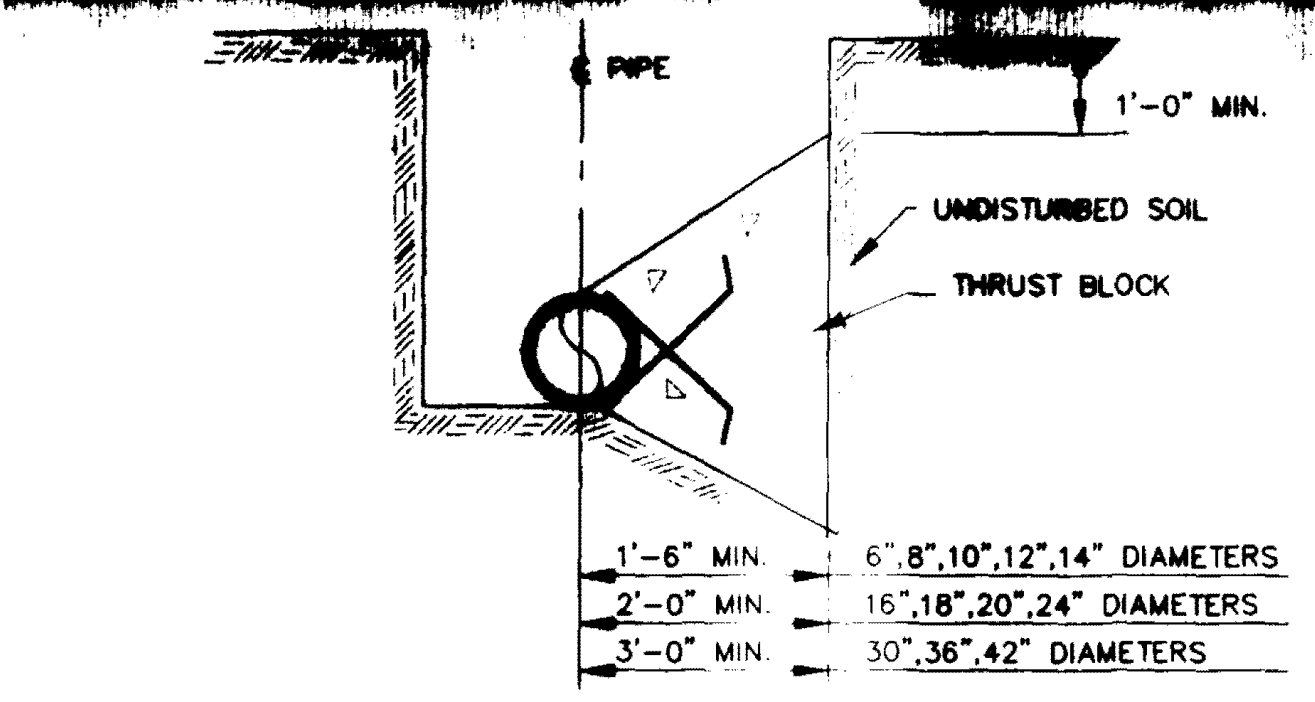
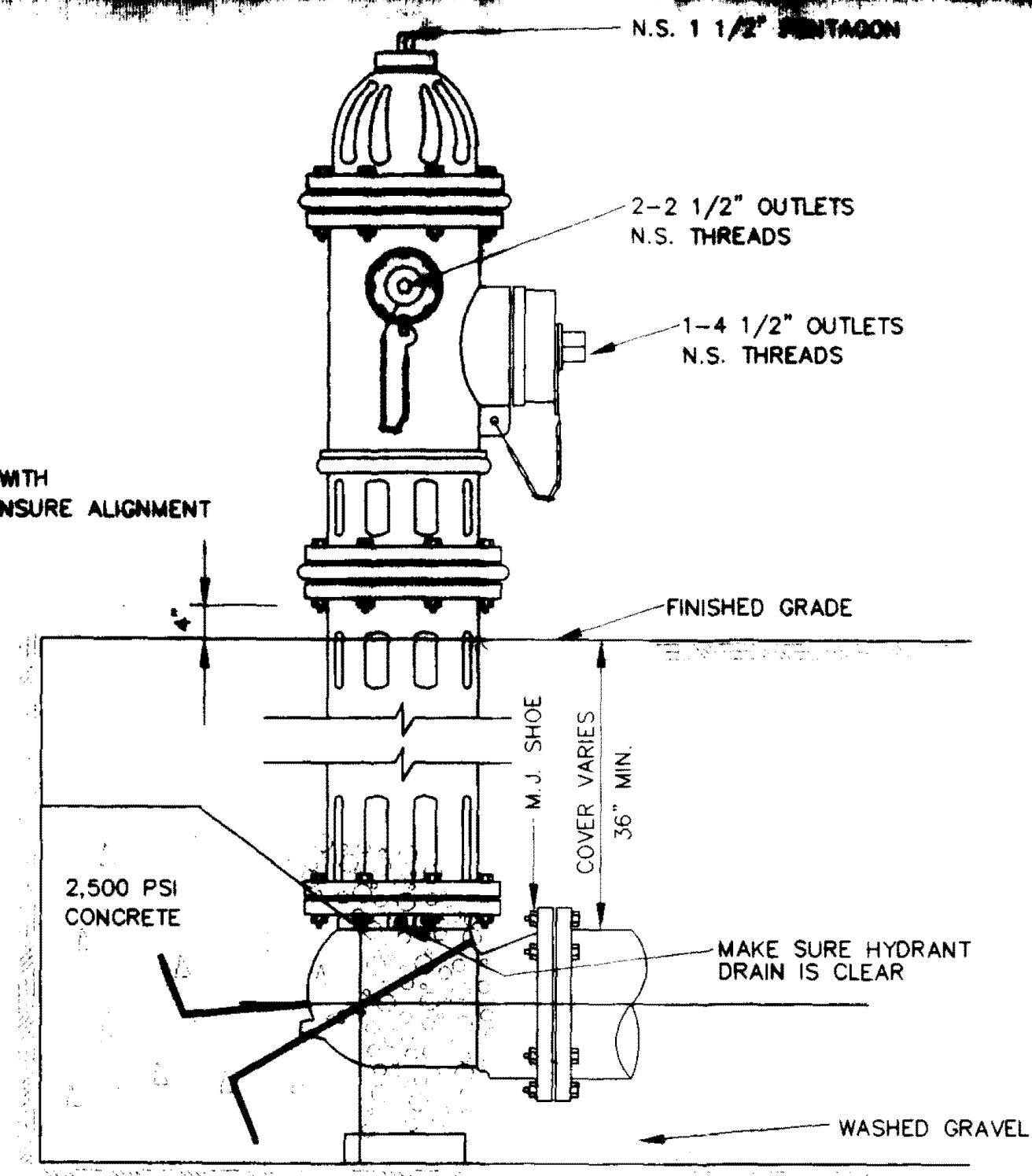
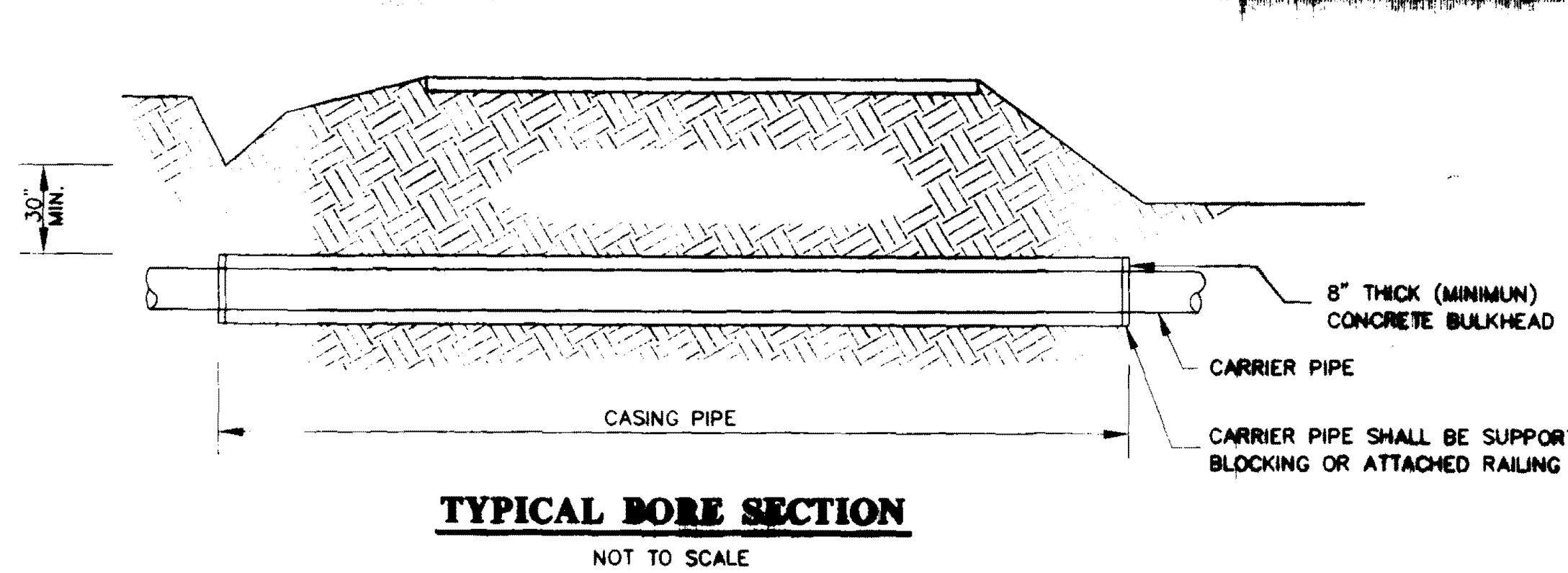
**STANDARD
SANITARY SEWER DETAILS**

**HINDS & MADISON
COUNTIES, MISSISSIPPI**

REV.	DATE	BY	CHKD.
1	6/1/75	WGC	WGC
2	6/1/75	WGC	WGC
3	6/1/75	WGC	WGC

STERLING

100 R. David Bates - Sterling Consultants, Inc.
 Rev. No. 5 11.25.84 1988



WATER VAULT & HYDRANT DETAIL PER BOARD #22 01/21/12
REVISION 1 12

CORRECTIONS
DRAWING NO. 101-101-101
DATE 01/21/12

WATER & SANITARY SEWER IMPROVEMENTS
WILLIAM G. COOK, JR. AGENT FOR
ANDERSON, STEPHENS & HOWARD

STANDARD WATER DETAILS

HINDS & MADISON COUNTIES, MISSISSIPPI

REV. 01/21/12
REV. 01/21/12
REV. 01/21/12
REV. 01/21/12

STERLING

5 • 5

Job No. 5 13 18 46 2005 R. David Bates - Sterling Consultants, Inc.