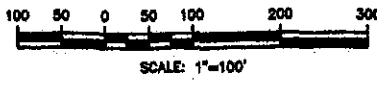


CONTRACTOR SHALL COORDINATE WITH ELECTRIC UTILITY THE LOCATION OF PAD MOUNTED TRANSFORMER AND PRIMARY CONDUCTORS (DIRECT BURIAL) WHICH SHALL BE SUPPLIED AND INSTALLED BY THE ELECTRIC UTILITY. CONTRACTOR SHALL COMPENSATE THE ELECTRIC UTILITY FOR THIS WORK AND THE CONTRACTOR SHALL BE COMPENSATED FOR THIS WORK UNDER PAY ITEM 607-820-5.

SECONDARY POWER CONTROLLER
 SPC# 1 STATION 108+00 RT.
 LOCATION RT. 1-55
 BUS 100 AMPERE 80 AMPERE MCB
 480 VOLTS 1 PHASE 3 WIRE 60 HZ.
 SURFACE MOUNT-NEMA 3R-COPPER BUS
 BOTTOM FED WITH GROUND BUS
 FEEDER SIZE #2 THWN

CKT#	AMPERES	POLES	AC	SERVES
1	20	2	10	HA-1
2	30	2	10	HA-2,4
3	20	2	10	HA-3
4	30	2	10	HA-5,6
5	30	2	10	SPARE
8-12		1		SPACE

NO.	STATION	OFFSET	REMARKS
HA-1	107+00	2' RT.	1-55 N.B. C.L.
HA-2	112+25	2' LT.	1-55 N.B. C.L.
HA-3	117+50	150' RT.	1-55 N.B. C.L.
HA-4	118+00	240' LT.	1-55 N.B. C.L.
HA-5	122+85	2' RT.	1-55 N.B. C.L.
HA-6	128+00	0	1-55 N.B. C.L.
HA-7	131+25	2' LT.	1-55 N.B. C.L.



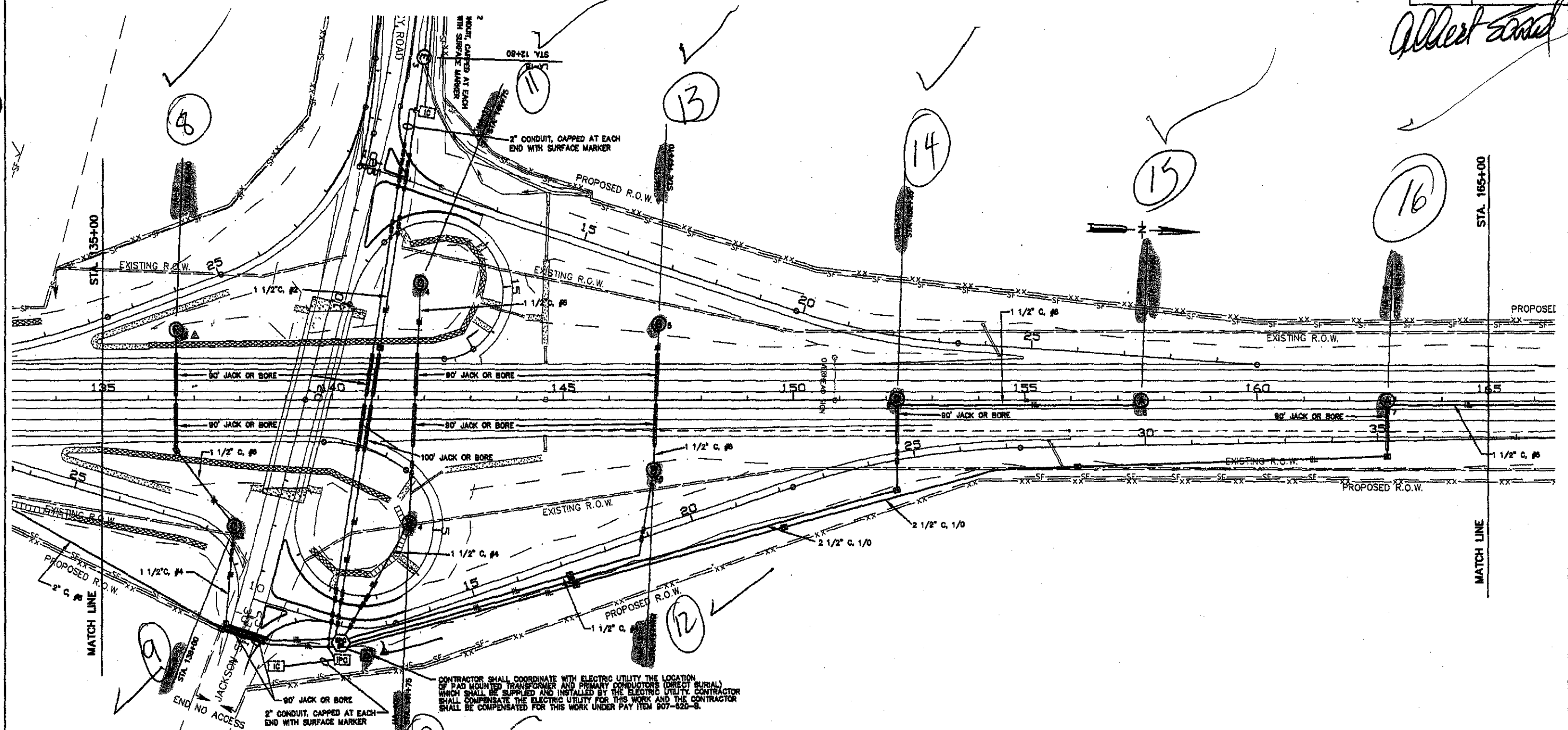
MISSISSIPPI DEPARTMENT OF TRANSPORTATION
**I-55 AT OLD AGENCY ROAD
 LIGHTING LAYOUT
 STA. 106+00 TO STA. 135+00**

PROJECT NO. IM-055-2(160)
 COUNTY: MADISON

DESIGNED: V.G.R. DETAILED: S.W. TRACED: _____
 CHECKED: _____ ISSUED: _____ DATE: _____

WORKING NUMBER: L-1
 SHEET NUMBER: 100.64

Albert Street

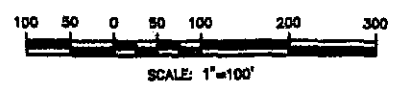


CONTRACTOR SHALL COORDINATE WITH ELECTRIC UTILITY THE LOCATION OF PAD MOUNTED TRANSFORMER AND PRIMARY CONDUCTORS (DIRECT BURIAL) WHICH SHALL BE SUPPLIED AND INSTALLED BY THE ELECTRIC UTILITY. CONTRACTOR SHALL COMPENSATE THE ELECTRIC UTILITY FOR THIS WORK AND THE CONTRACTOR SHALL BE COMPENSATED FOR THIS WORK UNDER PAY ITEM 907-820-B.

SECONDARY POWER CONTROLLER
 SPC# 2 STATION 140+00 RT.
 LOCATION RT. I-55
 BUS 225 AMPERE 175 AMPERE MCB
 480 VOLTS 1 PHASE 3 WIRE 60 HZ.
 SURFACE MOUNT-NEMA 3R-COPPER BUS
 BOTTOM FED WITH GROUND BUS
 FEEDER SIZE #4/0 THWN

CKT#	AMPERES	POLES	AKC	SERVE#
1	20	2	10	HA-7
2	30	2	10	HA-8
3	30	2	10	HA-9
4	30	2	10	LA-18, 19, 20, 21, 22, 23, 24, 25, 26, 27, 28, 29
5	30	2	10	HA-10, 11
6	30	2	10	HA-12, 13
7	30	2	10	HA-14, 15
8	30	2	10	HA-16, 17
8-12		2	10	SPARE

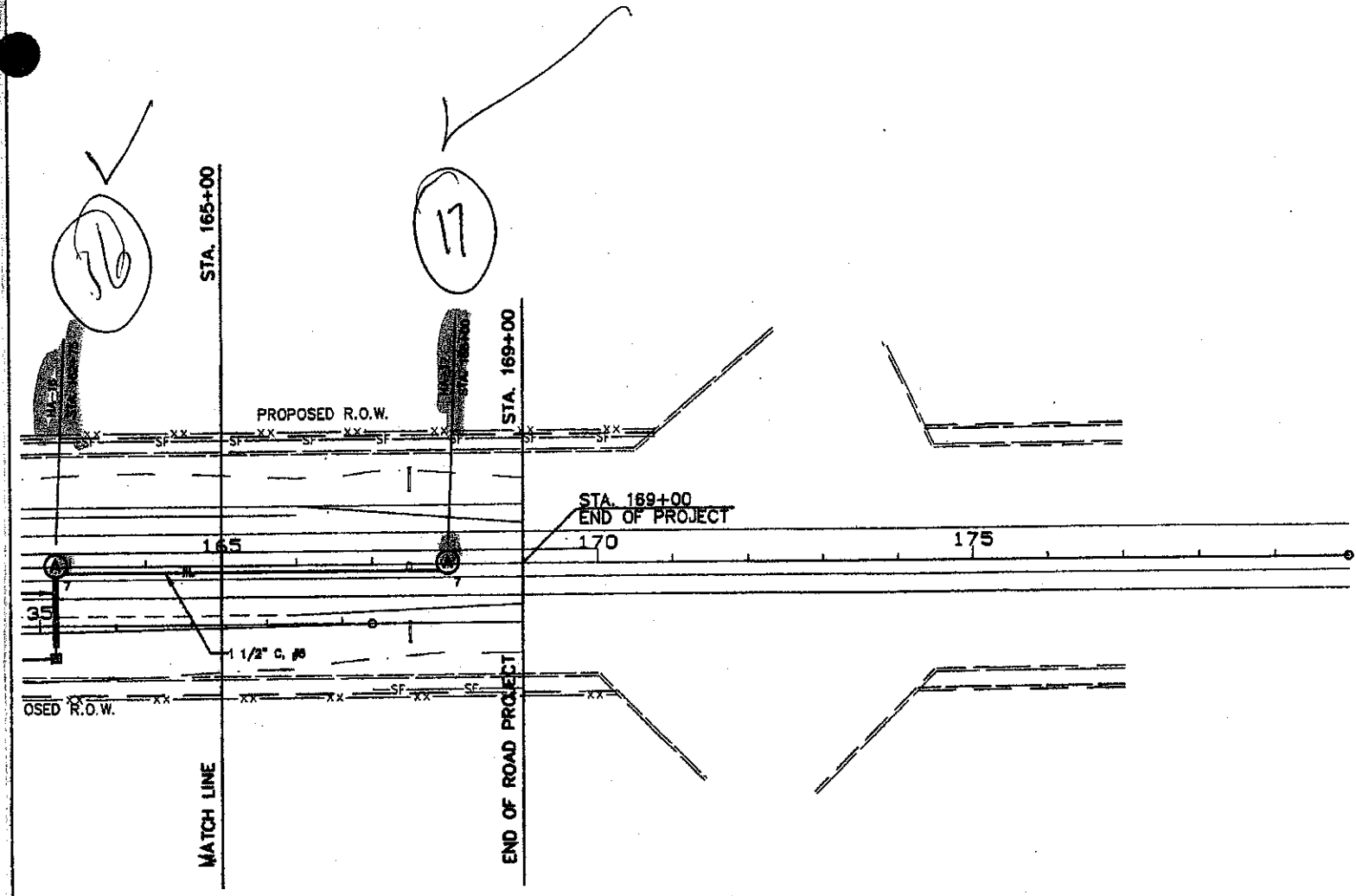
NO.	STATION	OFFSET	REMARKS
HA-8	136+80	180' LT.	I-55 N.B. C.L.
HA-9	136+00	270' RT.	I-55 N.B. C.L.
HA-10	141+78	270' RT.	I-55 N.B. C.L.
HA-11	141+78	280' LT.	I-55 N.B. C.L.
HA-12	147+10	150' RT.	I-55 N.B. C.L.
HA-13	147+10	180' LT.	I-55 N.B. C.L.
HA-14	152+35	2' RT.	I-55 N.B. C.L.
HA-15	157+90	2' RT.	I-55 N.B. C.L.
HA-16	162+70	2' LT.	I-55 N.B. C.L.



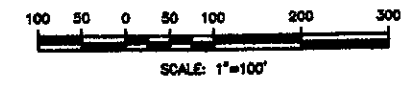
MISSISSIPPI DEPARTMENT OF TRANSPORTATION			
I-55 AT OLD AGENCY ROAD LIGHTING LAYOUT STA. 135+00 TO STA. 165+00			
PROJECT NO. IM-055-2(160)			
COUNTY: MADISON			
DESIGNED V.G.R. DETAILED S.W. TRADED _____			WORKING NUMBER
CHECKED _____ ISSUED _____ DATE _____			L-2
			SHEET NUMBER
			100.65

STATE	PROJECT NO.
MISS	IM-055-2(160)

Albert Sand



NO.	STATION	OFFSET	REMARKS
17	168+00	2' RT.	I-55 N.B. C.L. I-55



MISSISSIPPI DEPARTMENT OF TRANSPORTATION
 I-55 AT OLD AGENCY ROAD
 LIGHTING LAYOUT
 STA. 165+00 TO STA. 169+00

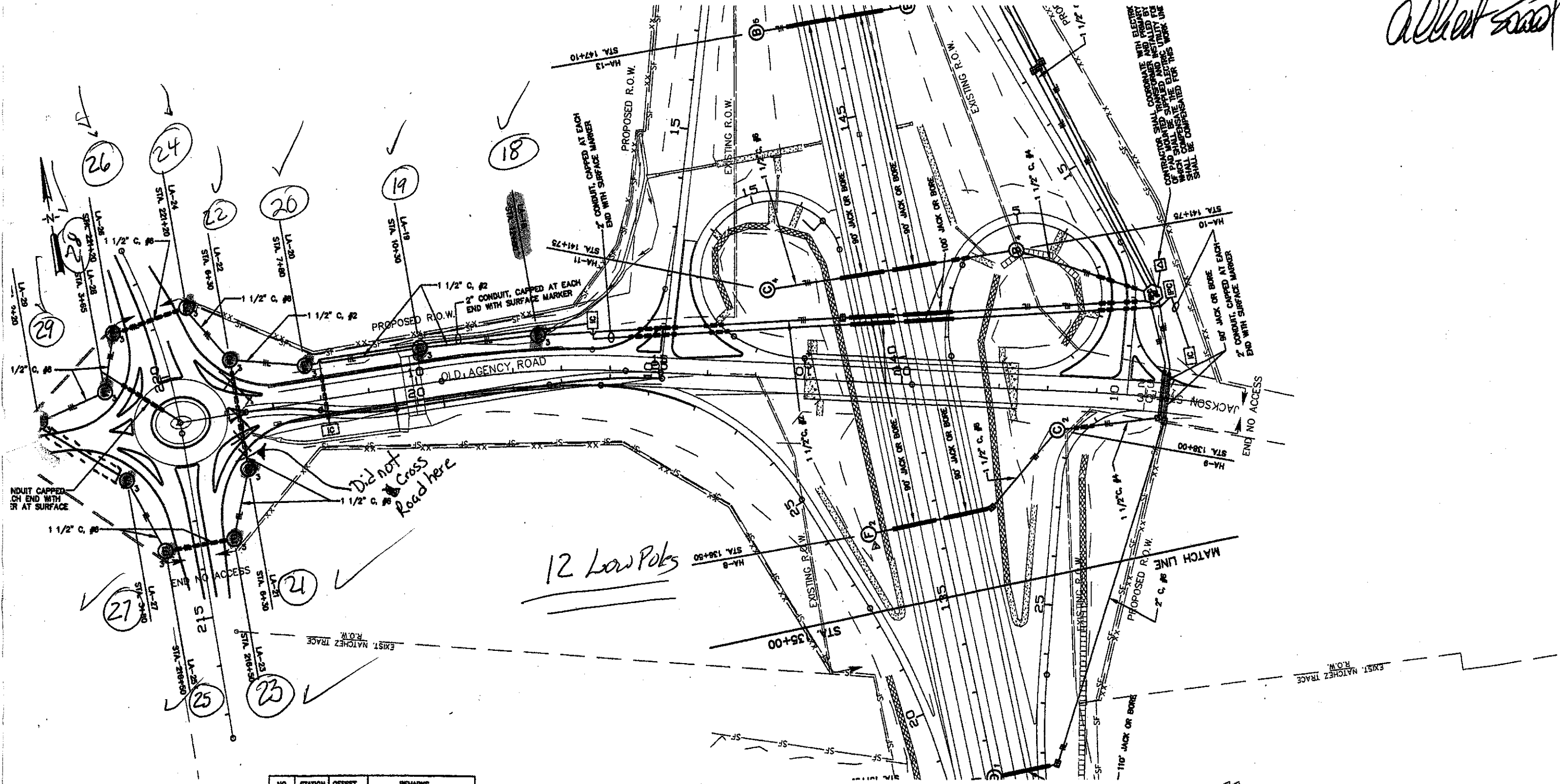
PROJECT NO. IM-055-2(160)
 COUNTY: MADISON

DESIGNED	V.G.R.	DETAILED	S.M.	TRACED	
CHECKED		ISSUED		DATE	

WORKING NUMBER
L-3

SHEET NUMBER
100.66

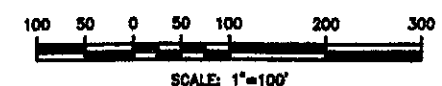
Albert Reed



NO.	STATION	OFFSET	REMARKS
LA-18	12+80	80' LT.	OLD AGENCY E.B. C.L.
LA-19	10+30	80' LT.	OLD AGENCY E.B. C.L.
LA-20	7+80	80' LT.	OLD AGENCY E.B. C.L.
LA-21	8+30	115' RT.	OLD AGENCY E.B. C.L.
LA-22	9+30	110' LT.	OLD AGENCY E.B. C.L.
LA-23	218+80	70' RT.	HIGHLAND COLONY N.B. C.L.
LA-24	221+20	78' RT.	HIGHLAND COLONY N.B. C.L.
LA-25	218+80	80' LT.	HIGHLAND COLONY N.B. C.L.
LA-26	221+20	85' LT.	HIGHLAND COLONY N.B. C.L.
LA-27	3+80	100' RT.	OLD AGENCY E.B. C.L.
LA-28	3+85	85' LT.	OLD AGENCY E.B. C.L.
LA-29	2+20	80' LT.	OLD AGENCY E.B. C.L.

Did not cross Road here

12 Low Poles



MISSISSIPPI DEPARTMENT OF TRANSPORTATION I-55 AT OLD AGENCY ROAD LIGHTING LAYOUT STA. 5+00 TO STA. 25+00	
PROJECT NO. IM-055-2(160) COUNTY: MADISON	
DESIGNED V.G.R. DETAILED S.M. TRACED	WORKING NUMBER L-4 SHEET NUMBER