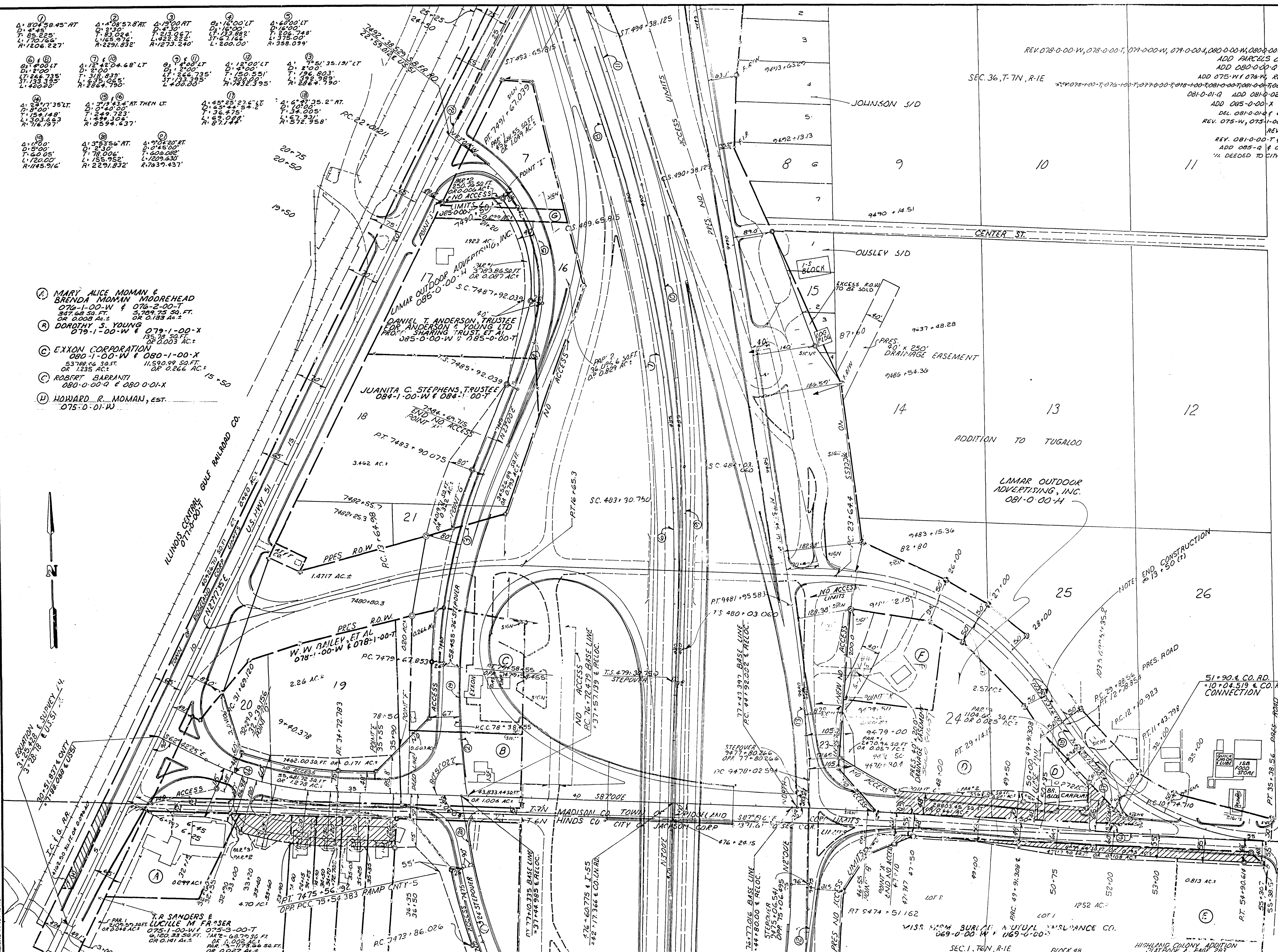


DRAWN BY	DATE	LEGEND
G. MANN	10-7-81	RAILROADS
REVISIONS	DATE BY	FENCE
2-11-82	W.H.H.	SECTION LINE
3-1-82	W.H.H.	PROPERTY LINE
3-22-82	W.H.H.	COUNTY LINE
5-11-82	W.H.H.	COR LINE
5-27-82	W.H.H.	URBAN LIMITS
6-1-82	W.H.H.	PRES. FEED LINE
6-4-82	W.H.H.	NEW RAW LINE
7-13-82	W.H.H.	NO ACCESS LIMITS
7-13-82	W.H.H.	TEL. LINE
7-13-82	W.H.H.	UNDERGROUND TEL. CABLE
7-13-82	W.H.H.	POWER LINE
7-13-82	W.H.H.	WATER LINE
7-13-82	W.H.H.	GAS LINE
7-13-82	W.H.H.	ROADS & STREETS CLOSED
7-13-82	W.H.H.	BRIDGES
7-13-82	W.H.H.	BUILDINGS
7-13-82	W.H.H.	R.O.W. MARKERS
7-13-82	W.H.H.	STREAM



- (A) MARY ALICE MOMAN & BRENDA MOMAN MOOREHEAD 076-1-00-W & 076-2-00-T 347.68 SQ. FT. OR 0.008 AC.±
- (B) DOROTHY S. YOUNG 075-1-00-W & 075-1-00-X 135.79 SQ. FT. OR 0.003 AC.±
- (C) EXXON CORPORATION 080-1-00-W & 080-1-00-X 53788.66 SQ. FT. OR 1.235 AC.±
- (D) ROBERT BARRANTY 080-0-00-Q & 080-0-01-X
- (E) HOWARD R. MOMAN, EST. 075-0-01-W

- (D) ROBERT W. WARREN & WILLIAM A. BACON 081-0-00-W & 081-1-00-T
- (D) ROBERT R. MORRISON & SON, INC. 085-4-1-00-B & 081-1-01-T 0.188 AC.± OR 0.020 AC.±
- (E) EXXON CORP. 082-0-00-W & 082-0-00-T 3943.81 SQ. FT. OR 0.091 AC.±
- (F) BARRY ANN WARREN SMITH, ET AL 083-0-00-G
- (F) WALLACE FAMILY RESTAURANTS, INC. 083-0-01-C
- (D) A.A. BENNETT CHOTARD 081-0-01-G & 081-0-02-T 2185.47 SQ. FT. OR 0.188 AC.±
- (G) CITY OF RIDGELAND 085-0-00-Q & 085-0-01-T 3569.99 SQ. FT. OR 0.082 AC.±

RE. NO. 51-0055-02-072-10
R.O.W. PLAN
FEDERAL AID PROJECT
 51-0055-02-085-10
 I-55-2(85)
HINDS & MADISON COUNTY
 INTERSTATE HIGHWAY N.55 BETWEEN
 WOODROW WILSON & U.S. 51
 SCALE 1"=100'
MISS. STATE HIGHWAY DEPT.
 SHEET 12 OF 13

PWP-00344

REV 070-1-00-T, 071-W, 072-W, 072-1-00-T, 073-W, 073-1-00-T, 074-W, 074-1-00-T DEL 071-1-00-T
DEL 066-0-00-T, 066-0-01-T, 066-0-02-T

6-21-82	W.H.H.
9-2-82	W.H.H.

CHANGE NAME 065-0-01-Q, 066-0-01-Q, 066-0-02-T
REV 067-0-00-T & 067-0-01-T
REV 070-0-00-W
ADD REM. AC.
DELETE 065-0-00-Q & 065-0-01-Q
ADD 071-W-074-W, REV 070-1-00-W, 070-T TO 074-T
064-0-02-T, 067-1-00-T, 067-W, 067-T, 067-1-00-T, 071-1-00-T, 072-1-00-T, 073-1-00-T, 074-1-00-T

DATE	REVISIONS
10-7-81	G. MANN
1-8-82	W.H.H.
1-21-82	W.H.H.
2-24-82	W.H.H.
3-2-82	W.H.H.
4-22-82	W.H.H.
5-11-82	W.H.H.
5-27-82	W.H.H.

LEGEND	
ROADS	RAILROADS
FENCE	SECTION LINE
PROPERTY LINE	COUNTY LINE
CORR. LINE	URBAN LIMITS
PRES. ROW LINE	NEW ROW LINE
NO ACCESS LIMITS	TEL. LINE
UNDERGROUND TEL. CABLE	POWER LINE
WATER LINE	GAS LINE
ROADS & STREETS CLOSED	BRIDGES
BUILDINGS	ROW MARKERS
STREAM	

SOUTHBOUND FR. RD.

① Δ·2°06'LT
D·0°12'
T·525.059'
L·1050.00'
R·28647.90'

② Δ·20°04'58.454"LT
D·2°30'
T·405.821'
L·803.316'
R·2291.83'

③ Δ·8°04'58.45"RT
D·4°45'
T·85.225'
L·170.166'
R·1206.23'

④ Δ·4°08'57.8"RT
D·2°30'
T·83.024'
L·165.975'
R·2291.83'

NORTHBOUND FR. RD.

⑤ Δ·2°45'RT
D·0°15'
T·550.106'
L·1100.00'
R·2291.32'

⑥ Δ·9°15'RT
D·1°45'
T·264.841'
L·529.571'
R·3274.05'

⑦ Δ·12°00'LT
D·4°00'
T·150.551'
L·300.00'
R·1432.40'

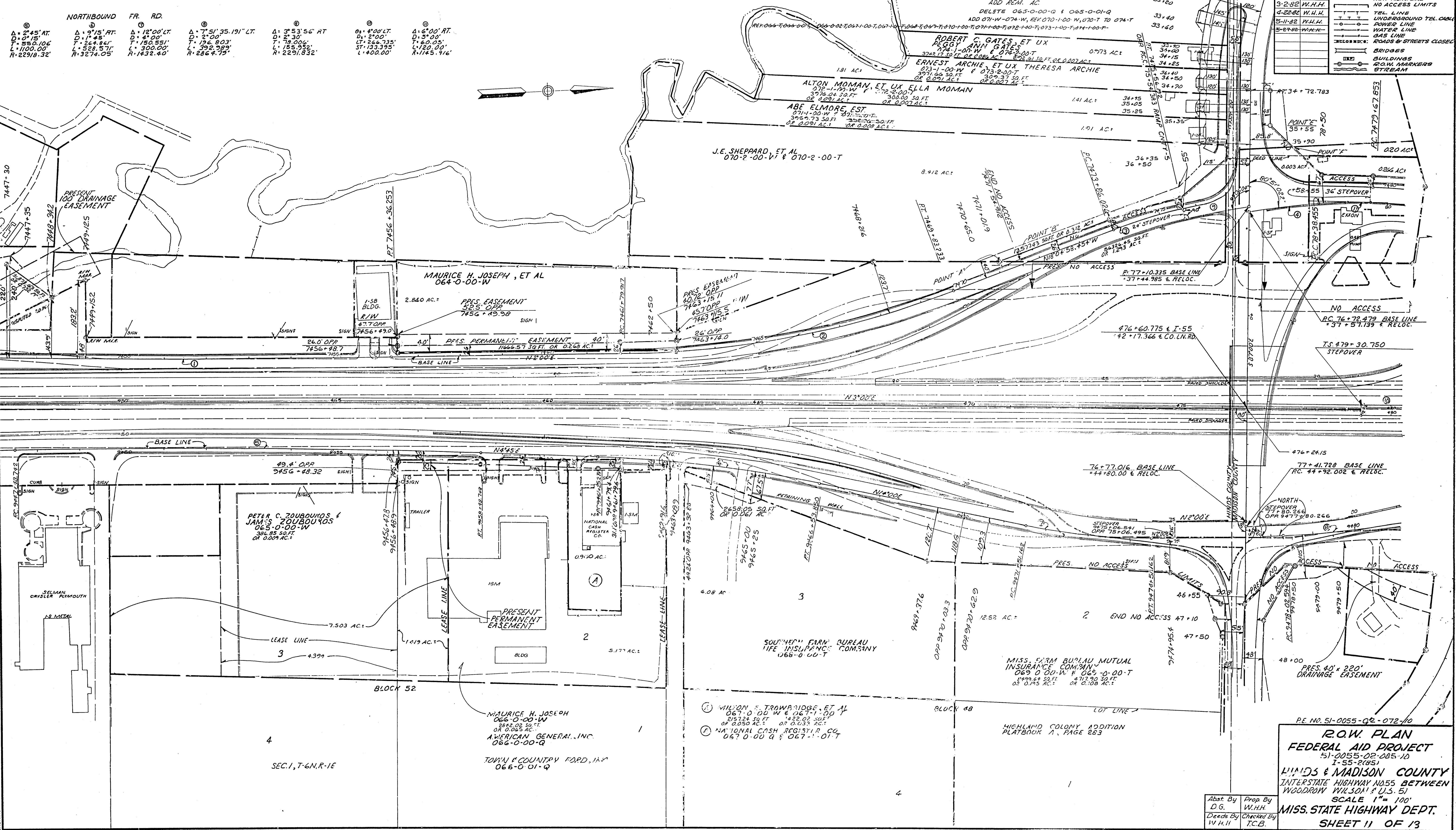
⑧ Δ·7°51'35.191"LT
D·2°00'
T·196.803'
L·392.229'
R·2864.75'

⑨ Δ·3°53'56"RT
D·2°30'
T·78.006'
L·155.952'
R·2291.832'

⑩ Δ·6°00'RT
D·1°50'
T·60.051'
L·120.00'
R·145.916'

⑪ Δ·4°00'LT
D·1°20'
T·246.735'
L·490.00'
R·145.916'

SEC. 1, T-6N, R-1E



RE NO. 51-0055-02-072-10
R.O.W. PLAN
FEDERAL AID PROJECT
51-0055-02-085-10
1-55-2185)
HANDS & MADISON COUNTY
INTERSTATE HIGHWAY NO. 55 BETWEEN
WOODROW WILSON & U.S. 51
SCALE 1" = 100'
MISS. STATE HIGHWAY DEPT.
SHEET 11 OF 13

Abst. By
D.G.
Deeds By
W.H.H.

Prop. By
W.H.H.
Checked By
T.C.B.

SEC. 1, T-6N, R-1E

BRUNING 441.131.00419

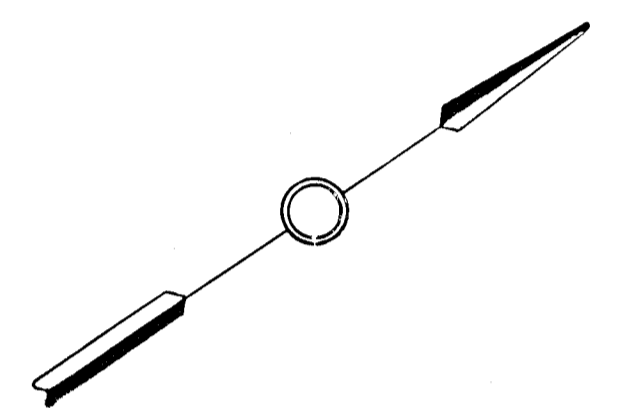
① Δ: 2°17'35" LT. D: 8'00". T: 154.148'. L: 303.663'. R: 716.197'.
 ② Δ: 19°00' RT. D: 4'30". T: 213.067'. L: 422.222'. R: 1273.24'.
 ③ Δ: 16°00' LT. D: 16'00". T: 133.882'. L: 200.00'.
 ④ Δ: 40°00' LT. D: 16'00". T: 206.748'. L: 375.00'. R: 358.099'.
 ⑤ Δ: 14°00' LT. D: 2'00". T: 266.735'. L: 133.395'. R: 400.00'.

⑥ Δ: 4°00' LT. D: 2'00". T: 266.735'. L: 133.395'. R: 400.00'.
 ⑦ Δ: 30°08' 24.809" RT. D: 20'00". T: 71.38'. L: 150.70'. R: 286.48'.
 ⑧ Δ: 38°30' 35.971" RT. D: 16'00". T: 125.089'. L: 240.647'. R: 358.099'.
 ⑨ Δ: 4°00' LT. D: 0'40'00". T: 300.122'. L: 600.00'. R: 8594.367'.
 ⑩ Δ: 9°04' 20" RT. D: 0'45'00". T: 1606.082'. L: 1209.630'. R: 7639.437'.

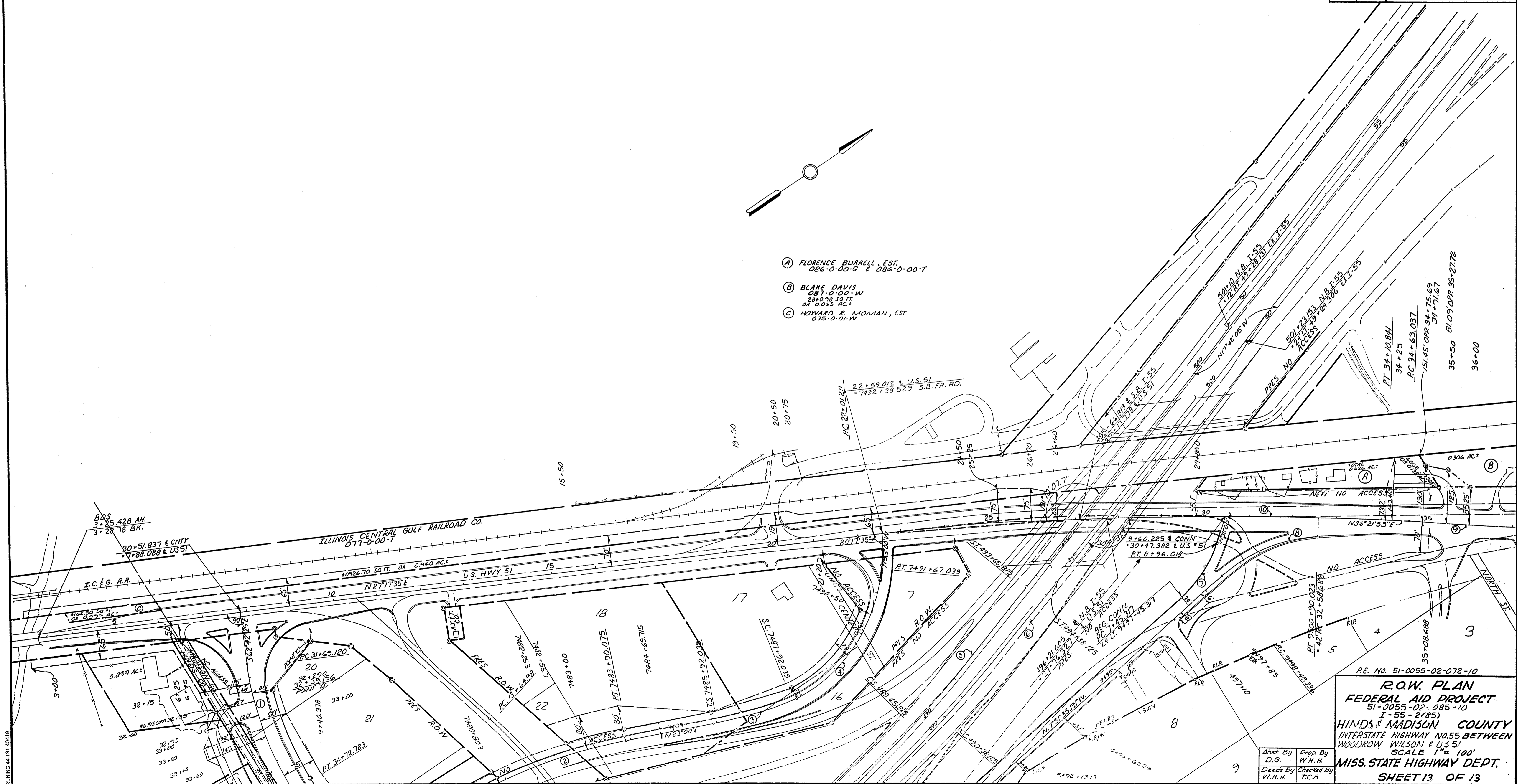
DRAWN BY	DATE	LEGEND
G. MANN	10-7-81	ROADS
		RAILROADS
		FENCE
		SECTION LINE
		PROPERTY LINE
		COUNTY LINE
		CORR LINE
		URBAN LIMITS
		NEW ROW LINE
		NO ACCESS LIMITS
		TEL. LINE
		UNDERGROUND TEL. CABLE
		POWER LINE
		WATER LINE
		GAS LINE
		ROADS & STREETS CLOSED
		BRIDGES
		BUILDINGS
		R.O.W. MARKERS
		STREAM

REVISIONS
 DATE BY
 5-27-82 W.H.H.
 7-2-82 W.H.H.

REVISIONS
 DATE BY
 5-27-82 W.H.H.
 7-2-82 W.H.H.



- (A) FLORENCE BURRELL, EST.
086-0-00-G & 086-0-00-T
- (B) BLAKE DAVIS
087-0-00-W
2860.98 SQ. FT.
OR 0.065 AC.
- (C) HOWARD R. MANNAN, EST.
075-0-01-W



RE. NO. 51-0055-02-072-10
R.O.W. PLAN
FEDERAL AID PROJECT
 51-0055-02-085-10
 I-55-2(85)
HINDS & MADISON COUNTY
 INTERSTATE HIGHWAY NO. 55 BETWEEN
 WOODROW WILSON & U.S. 51
 SCALE 1" = 100'
MISS. STATE HIGHWAY DEPT.
 SHEET 13 OF 13

Abst. By D.G.
 Prop. By W.H.H.
 Deeds By W.H.H.
 Checked By T.C.B.

BRUNING 44-131-02419

REV 070-1-00-T, 071-W, 072-W, 073-W, 074-W, 074-1-00-T DEL 071-1-00-T
 DEL. 066-0-00-T, 066-0-01-T, 066-0-02-T

6-21-82	W.H.H.
9-2-82	W.H.H.

CHANGE NAME 065-0-01-Q & 066-0-01-Q, 066-0-02-T
 REV 067-0-00-T & 067-0-01-T
 REV 070-0-00-W
 ADD REM. AC.
 DELETE 065-0-00-Q & 065-0-01-Q
 ADD 071-W-074-W, REV 070-1-00-W, 070-T TO 074-T
 DEL. 066-0-00-T, 066-0-01-T, 066-0-02-T

DRAWN BY	DATE	REVISIONS	LEGEND
G. MANN	10-7-81	1-8-82 W.H.H.	ROADS
		1-21-82 W.H.H.	RAILROADS
		2-24-82 W.H.H.	FENCE
		3-2-82 W.H.H.	SECTION LINE
		4-22-82 W.H.H.	PROPERTY LINE
		5-27-82 W.H.H.	COUNTY LINE
			CORR LINE
			URBAN LIMITS
			PROP. ROW LINE
			NO ACCESS LIMITS
			TEL. LINE
			UNDERGROUND TEL. CABLE
			POWER LINE
			WATER LINE
			GAS LINE
			RELOC. REC'D.
			ROADS & STREETS CLOSED
			BRIDGES
			BUILDINGS
			ROW MARKERS
			STREAM

SOUTHBOUND FR. RD.

① Δ 2° 06' LT. D 0' 15". T 525.053'. L 1050.00'. R 2864.790'

② Δ 20° 04' 58.454" LT. D 2' 30". T 405.821'. L 803.316'. R 2291.83'

③ Δ 8° 04' 58.45" RT. D 4' 45". T 85.225'. L 170.166'. R 1206.23'

④ Δ 4° 08' 57.8" RT. D 2' 30". T 83.024'. L 165.975'. R 2291.83'

NORTHBOUND FR. RD.

⑤ Δ 19° 15' RT. D 1' 45". T 264.841'. L 528.571'. R 3274.05'

⑥ Δ 12° 00' LT. D 4' 00". T 150.551'. L 300.00'. R 1432.40'

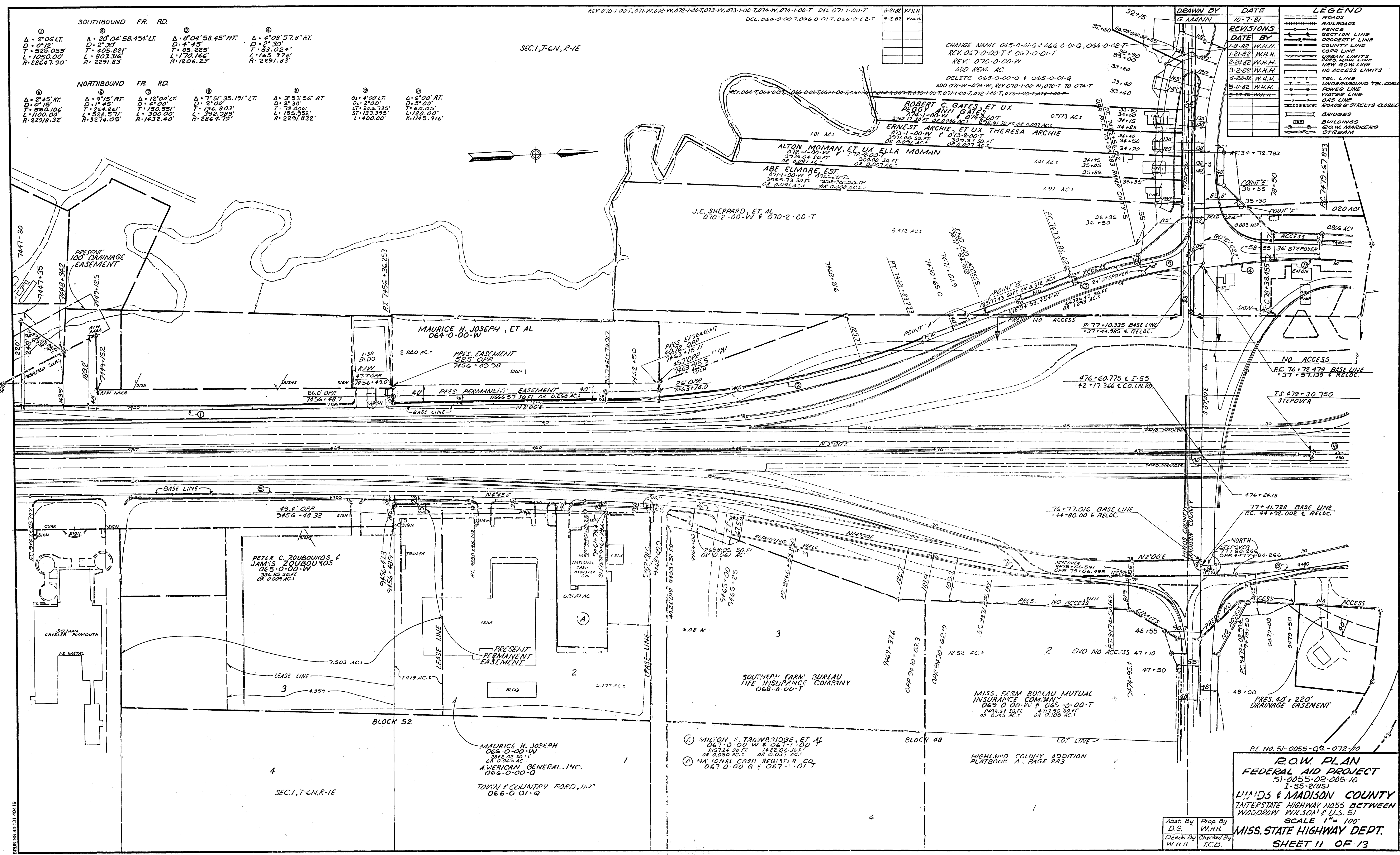
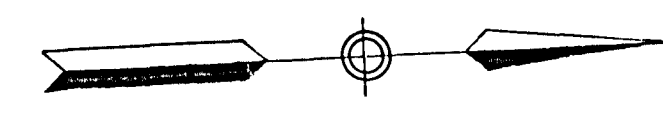
⑦ Δ 7° 51' 35.191" LT. D 2' 00". T 136.803'. L 272.299'. R 2864.790'

⑧ Δ 3° 53' 56" RT. D 2' 30". T 78.006'. L 156.012'. R 2291.832'

⑨ Δ 4° 00' RT. D 3' 00". T 60.05'. L 120.00'. R 145.916'

⑩ Δ 4° 00' LT. D 2' 00". T 266.735'. L 533.470'. R 1400.00'

SEC. 1, T-6N, R-1E



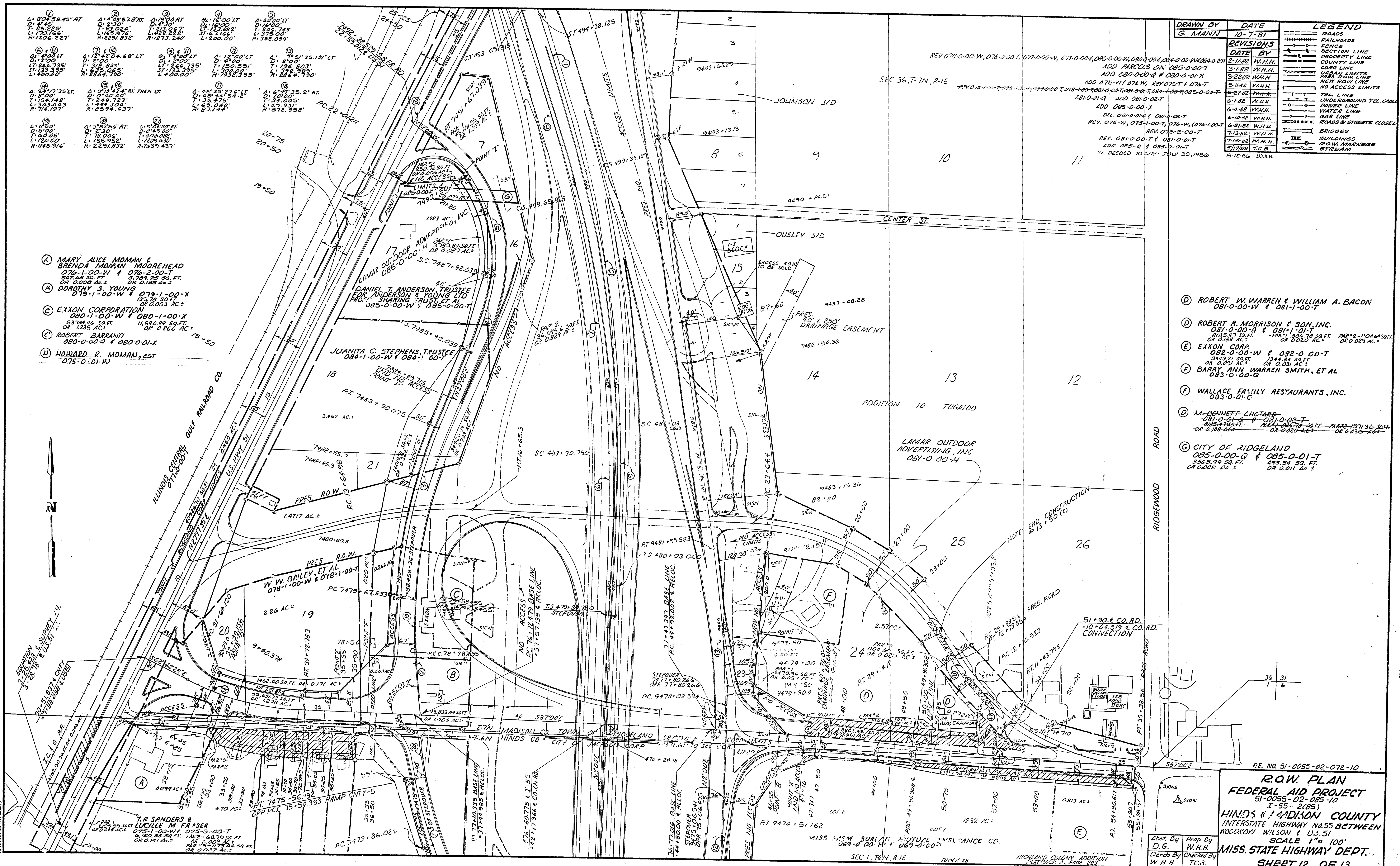
PE. NO. 51-0055-02-072-10

R.O.W. PLAN
FEDERAL AID PROJECT
 51-0055-02-085-10
 1-55-21851

HINDS & MADISON COUNTY
 INTERSTATE HIGHWAY NO. 55 BETWEEN
 WOODROW WILSON & U.S. 51
 SCALE 1" = 100'
MISS. STATE HIGHWAY DEPT.
 SHEET 11 OF 13

Drawn By: D.G.
 Prop. By: W.H.H.
 Checkd. By: T.C.B.

DRAWING 44-131-40419



DRAWN BY		DATE		LEGEND	
G. MANN		10-7-81		RAILROADS	
				ROADS	
				FENCE	
				SECTION LINE	
				PROPERTY LINE	
				COUNTY LINE	
				CORR LINE	
				URBAN LIMITS	
				R.O.W. LIMITS	
				NEW R.O.W. LINE	
				NO ACCESS LIMITS	
				TEL. LINE	
				UNDERGROUND TEL. CABLE	
				POWER LINE	
				WATER LINE	
				GAS LINE	
				ROADS & STREETS CLOSED	
				BRIDGES	
				BUILDINGS	
				R.O.W. MARKERS	
				STREAM	

- REVISONS
- | DATE | BY |
|---------|--------|
| 2-11-82 | W.H.H. |
| 3-1-82 | W.H.H. |
| 3-22-82 | W.H.H. |
| 5-11-82 | W.H.H. |
| 5-27-82 | W.H.H. |
| 6-1-82 | W.H.H. |
| 6-4-82 | W.H.H. |
| 6-10-82 | W.H.H. |
| 6-21-82 | W.H.H. |
| 7-13-82 | W.H.H. |
| 7-19-82 | W.H.H. |
| 5/17/83 | T.C.B. |
| 8-12-84 | W.H.H. |
- (D) ROBERT W. WARREN & WILLIAM A. BACON
081-0-00-W & 081-1-00-T
 - (D) ROBERT R. MORRISON & SON, INC.
081-0-00-Q & 081-1-01-T
81,657.31 SQ. FT. - PAR. 1, 896.79 SQ. FT. PAR. 2, 107,360 SQ. FT. OR 0.188 AC. - OR 0.025 AC. -
 - (E) EXXON CORP.
082-0-00-W & 082-0-00-T
39,432.21 SQ. FT. 13,448.84 SQ. FT. OR 0.209 AC. - OR 0.031 AC. -
 - (F) BARRY ANN WARREN SMITH, ET AL
083-0-00-G
 - (F) WALLACE FAMILY RESTAURANTS, INC.
083-0-01-C
 - (D) W.A. BENNETT CHOTARD
081-0-01-Q & 081-0-02-T
31,025.47 SQ. FT. PAR. 1, 896.79 SQ. FT. PAR. 2, 107,360 SQ. FT. OR 0.188 AC. - OR 0.025 AC. -
 - (G) CITY OF RIDGELAND
085-0-00-Q & 085-0-01-T
350,899 SQ. FT. 493,341 SQ. FT. OR 0.022 AC. - OR 0.011 AC. -

RE. NO. 51-0055-02-072-10
R.O.W. PLAN
FEDERAL AID PROJECT
 51-0055-02-085-10
 I-55 - 2(85)
HINDS & MADISON COUNTY
 INTERSTATE HIGHWAY NO. 55 BETWEEN
 WOODROW WILSON & U.S. 51
 SCALE 1" = 100'
 MISS. STATE HIGHWAY DEPT.
 SHEET 12 OF 13

Abst. By D.G. Prop. By W.H.H.
 Deeds By W.H.H. Checked By T.C.B.

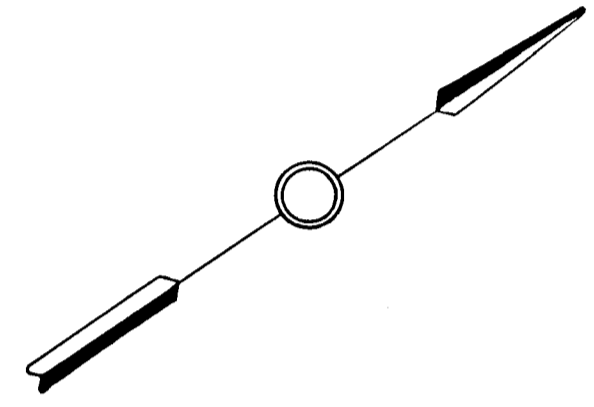
BRUNNING 44-131 40419

① Δ: 247.735' LT. D: 8' 00". T: 154.148'. L: 303.663'. R: 716.197'.
 ② Δ: 19' 00" RT. D: 4' 30". T: 213.067'. L: 422.222'. R: 1273.24'.
 ③ Δ: 16' 00" LT. D: 16' 00". T: 133.882'. ST: 67.166'. L: 200.00'.
 ④ Δ: 60' 00" LT. D: 16' 00". T: 206.748'. L: 375.00'. R: 358.099'.
 ⑤ Δ: 4' 00" LT. D: 2' 00". T: 266.735'. ST: 133.395'. L: 400.00'.

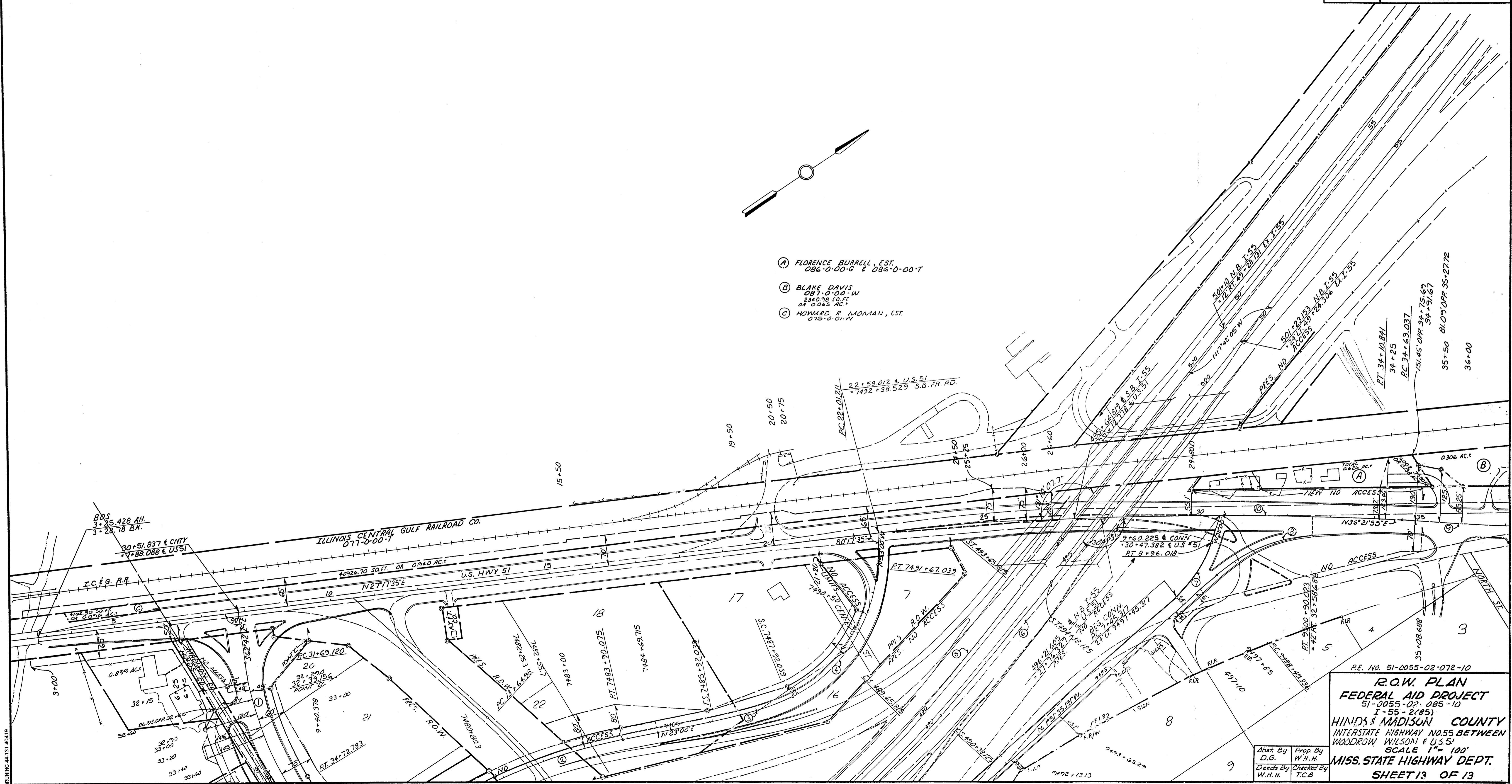
⑥ Δ: 4' 00" LT. D: 2' 00". T: 266.735'. ST: 133.395'. L: 400.00'.
 ⑦ Δ: 30' 28" 24.809' RT. D: 20' 00". T: 77.138'. L: 150.701'. R: 286.48'.
 ⑧ Δ: 38' 30" 35.971' RT. D: 16' 00". T: 125.089'. L: 240.667'. R: 358.099'.
 ⑨ Δ: 4' 00" LT. D: 0' 40' 00". T: 300.122'. L: 600.00'. R: 8594.367'.
 ⑩ Δ: 9' 04' 20" RT. D: 0' 45' 00". T: 606.082'. L: 1209.630'. R: 7639.437'.

DRAWN BY	DATE	LEGEND	
G. MANN	10-7-81	ROADS	RAILROADS
REVISIONS		FEI	SECTION LINE
DATE	BY	PROPERTY LINE	COUNTY LINE
5-27-82	W.H.H.	CORR LINE	URBAN LIMITS
7-26-82	W.H.H.	NEW ROW LINE	PREL. ROW LINE
		NO ACCESS LIMITS	TEL. LINE
		UNDERGROUND TEL. CABLE	POWER LINE
		WATER LINE	GAS LINE
		ROADS & STREETS CLOSED	BRIDGES
		BUILDINGS	ROW MARKERS
		STREAM	

R&K 077-0-00-T + 086-0-00-T
 ADD 075-0-01-W



- Ⓐ FLORENCE BURRELL, EST.
086-0-00-G & 086-0-00-T
- Ⓑ BLAKE DAVIS
087-0-00-W
2340.98 SQ. FT.
OR 0.045 AC.
- Ⓒ HOWARD R. MOMAN, EST.
075-0-01-W



R.E. NO. 51-0055-02-072-10
R.O.W. PLAN
FEDERAL AID PROJECT
 51-0055-02-085-10
 I-55-2(85)
HINDS & MADISON COUNTY
 INTERSTATE HIGHWAY NO. 55
 WOODROW WILSON & U.S. 51
 SCALE 1" = 100'
MISS. STATE HIGHWAY DEPT.
 SHEET 13 OF 13

Abst. By D.G.
 Prop. By W.H.H.
 Deeds By W.H.H.
 Checked By T.C.B.

BRUNING 44.131.40419